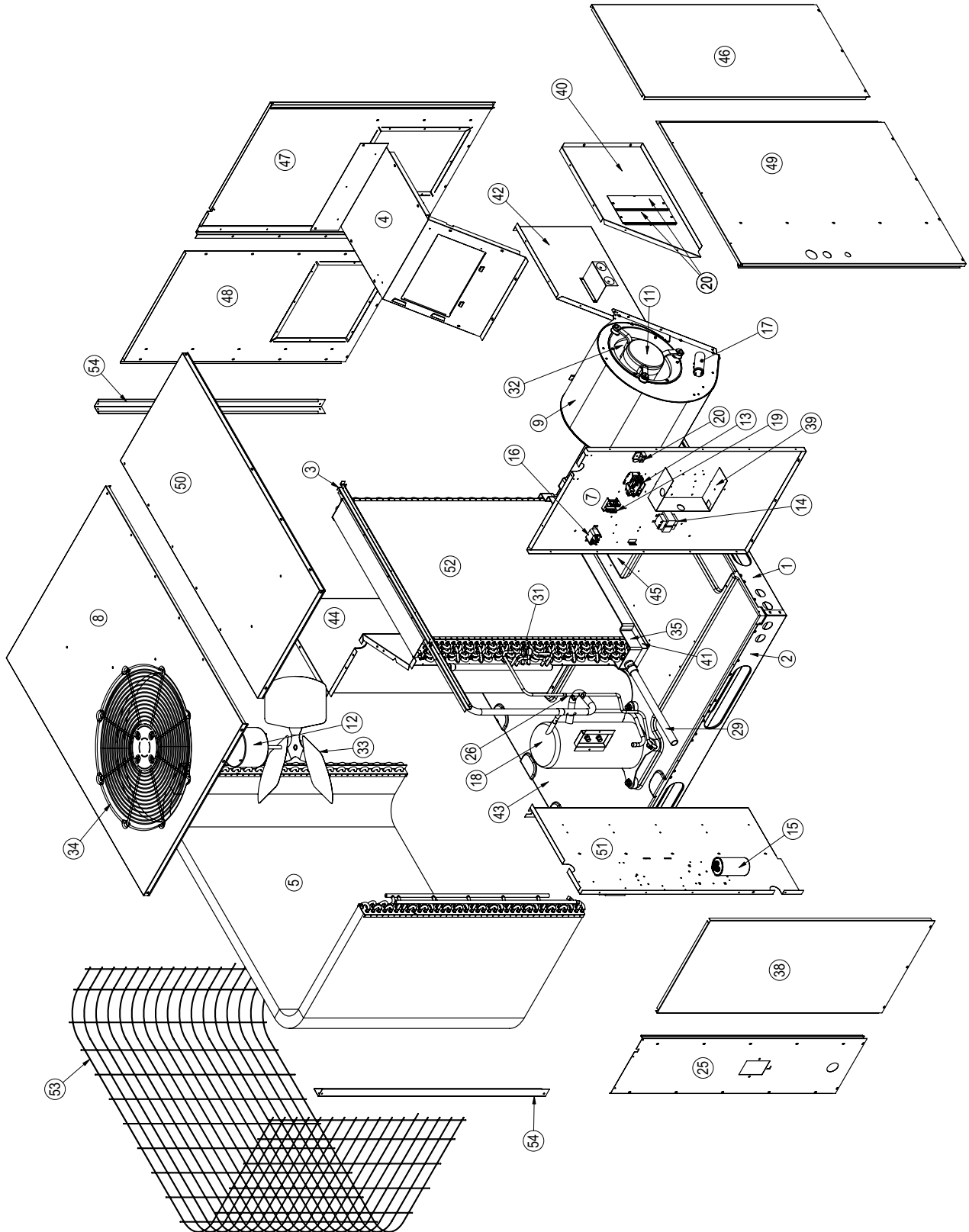


REPLACEMENT PARTS LIST

Single Package Air Conditioner (G)P4SD Single Phase



Single Package Air Conditioner Model (G)P4SD - Single Phase

	COMPONENT	DESCRIPTION	(G)P4SD-036K	(G)P4SD-048K	(G)P4SD-060K
			918943(G)	918944(G)	918945(G)
1	277551	RAIL,BASE,47.23"LG	2	2	2
2	277552	RAIL,BASE,55.63"LG	2	2	2
3	279722R	CHANNEL,DRAIN	1	1	1
4	283941	PANEL,BLOWER TRANSITION	1		
	283942			1	1
5	285821R	COIL, OUTDOOR	1		
	285831R			1	
	285841R				1
6	285861	SOW,P4SD,STD,WITH COMP. PLUG (NOT SHOWN)	1		
	285863	SOW,P4SD,FTV,NO COMP.PLUG (NOT SHOWN)		1	
	285862	SOW,P4SD,FTV,WITH COMP. PLUG (NOT SHOWN)			1
7	292402R	INSULATED CONTROL PANEL ASSY.	1	1	
	292403R				1
8	292441R	INSULATED TOP RIGHT PAN ASSY.	1	1	1
9	297212	BLOWER HSG ASSY,10X8	1		
	297214	BLOWER HSG ASSY,10X10		1	1
10	606260	NUT,HEX,8-32,DBL THICK,BRIGHT (NOT SHOWN)	4	4	4
	606261	NUT,HEX,8-32,DBL THICK,BLACK (NOT SHOWN) "G" MODELS ONLY	4	4	4
11	913357	BLOWER MOTOR, 1/4 HP	1		
	M0023901R	MTR,X-13 PROG,1/2 HP		1	
	M0023903R	MTR,X-13 PROG,3/4 HP			1
12	621720	MOTOR,FAN,1/8 HP	1		
	621721	MOTOR,FAN,1/4 HP		1	1
13	621662	CONTACTOR, 1 POLE 35A	1	1	1
14	621709	TRANSFORMER 40 VA	1	1	1
15	620779	CAPAC,RUN 50/5/370-RND-MTL	1		
	621842	CAPAC,RUN 60/7.5/440-RND-MTL		1	
	621717	CAPAC,RUN 80/7.5/370-RND-MTL			1
16	621867	RELAY, DPST	1		
	621931	RELAY,SPDT,NO/NC		1	1
17	622133	CAPAC,RUN 10/370-RND-PLST	1		
18	919102	COMP,COPE,ZR32KA-PFV	1		
	918788	COMP,COPE,ZR45K3-PFV		1	
	919105	COMP,COPE,ZR54KA-PFV			1
19	632214	BLOCK,TERMINAL 2-POLE	1	1	1
20	632235	DUAL GROUNDING LUG	1	1	1
21	632261	FUSE,3-AMP (NOT SHOWN)	1	1	1
22	634676	PLUG,MOLDED,HV,PKG (NOT SHOWN)	1		1
23	662103	CORE,CHARGING PORT (NOT SHOWN)	4	4	4
24	663582	DIST,BODY,5CIR,20.0L,3/16D (NOT SHOWN)	1	1	
	663586	DIST,BODY,8CIR,24.0L,3/16D (NOT SHOWN)			1
25	D12462R	PANEL,FRONT	1	1	
	D12463R				1
26	663593	VALVE,SERVICE 3/8"	1	1	1
27	663812	FITTING, ACCESS (NOT SHOWN)	1	1	1
28	663818	CAP, SERVICE PORT, BRASS (NOT SHOWN)	4	4	4
29	663833	DRAIN TUBE ASSY	1	1	1

Single Package Air Conditioner Model (G)P4SD - Single Phase (Continued)

	COMPONENT	DESCRIPTION	(G)P4SD-036K	(G)P4SD-048K	(G)P4SD-060K
			918943(G)	918944(G)	918945(G)
30	664077	RESTRICTOR (.077) (NOT SHOWN)	1		
	664087	RESTRICTOR (.087) (NOT SHOWN)		1	
	664097	RESTRICTOR (.097) (NOT SHOWN)			1
31	664194	CONNECTOR, SWIVEL (PARKER)	1	1	1
32	667037	WHEEL,BLOWER 10 X 8	1		
	667207	WHEEL,BLOWER 10 X 10		1	1
33	667279	FAN BLADE	1		
	667278			1	1
34	669175	GRILLE,FAN,22",STERLING GREY	1	1	1
	669404	GRILLE, TOP-24"BLACK("G" MODELS ONLY)	1	1	1
35	669190	PAN,DRAIN	1	1	1
36	917206	REPLACEMENT HAILGUARD KIT(NOT SHOWN)	1	1	1
37	903598	PAINT,STERLING GRAY,TOUCH UP	1	1	1
38	D05112R	PANEL,SERVICE	1	1	
	D05113R				1
39	D05120	DIVIDER,LOW VOLTAGE R4/P4/Q4	1	1	1
40	D05420	PANEL,ELECTRIC HEAT	1	1	1
41	D05440	STAND,DRAIN PAN	1	1	1
42	D05450	PANEL,BLOWER TRANS SIDE	1	1	1
43	D05480R	BOTTOM PAN ASSY.	1	1	1
44	D05502R	DIVIDER PANEL ASSY.	1	1	
	D05503R				1
45	D05530R	DUCT CAP ASSY.	2	2	2
46	D05542R	BLOWER PANEL ASSY.	1	1	
	D05543R				1
47	D05555R	SUPPLY PANEL ASSY.	1	1	
	D05556R				1
48	D05565R	RETURN PANEL ASSY.	1	1	
	D05566R				1
49	D05625R	CORNER PANEL ASSY.	1	1	
	D05626R				1
50	D05660R	TOP PAN ASSY.-LEFT	1	1	1
51	D05685R	PANEL,CLOSE-OFF ASSY.	1	1	
	D05686R				1
52	D13001R	COIL,INDOOR	1	1	
	D06256R				1
53	D09373R	GUARD,COIL(FORMED)	1	1	
	D09374R				1
54	D09996R	POST,CORNER	2	2	
	D09997R	POST,CORNER			2

