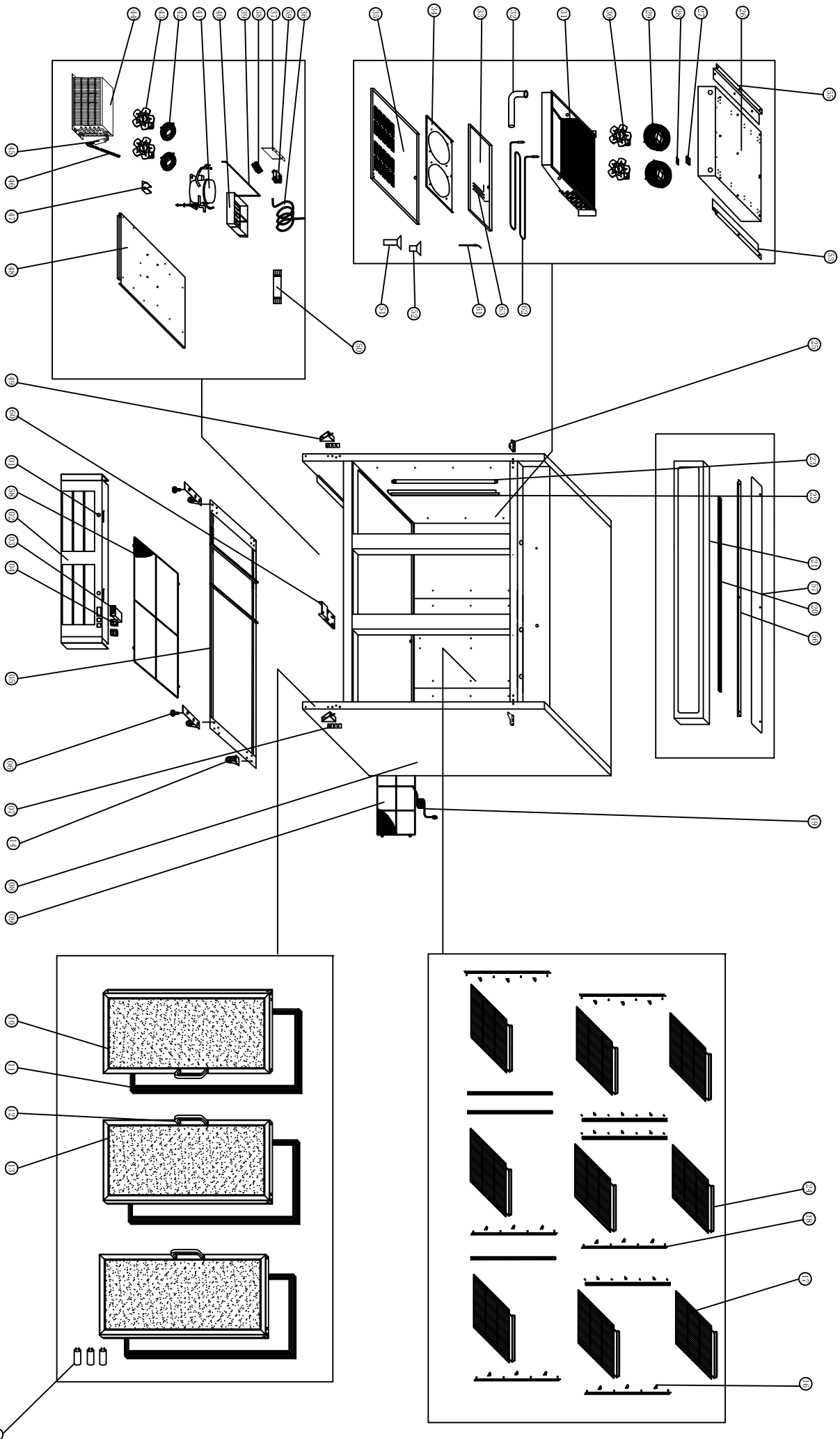


EXPLODE OF MXM3-72F



## SPARE PARTS LIST OF MXM3-72F

| NØ. | CODE               | NAME                  | MODEL                        | QTY.  |
|-----|--------------------|-----------------------|------------------------------|-------|
| 01  | GN650TN.86         | LOCK                  |                              | 2PCS  |
| 02  | HGD-72R.01-M05     | FRONT PANEL           |                              | 1PC   |
| 03  | 27F.11             | THERMOSTAT            | XR60C 115V                   | 1PC   |
| 04  | S900.01            | MAIN SWITCH           | DRH-2415-3                   | 1PC   |
| 05  | HGD-72R.02         | SUPPORT OF UNIT BOARD |                              | 2PCS  |
| 06  | HGD-12R.02         | FRONT WHEEL           |                              | 2PCS  |
| 07  | HGD12R.17          | WASHER OF DOWN HINGE  |                              | 2PCS  |
| 08  | HGD-72F.01         | BODY                  |                              | 1PC   |
| 09  | HGD-72R.04         | UNIT ROOM COVER       |                              | 1PC   |
| 10  | HGD-72F.02-M05     | LEFT DOOR             |                              | 1PC   |
| 11  | HGD-23R.15         | GASKET                |                              | 3PCS  |
| 12  | U-GNM2100TN.17-M05 | GLASS DOOR HANDLE     |                              | 3PCS  |
| 13  | HGD-23F.02-M05     | DOOR/RIGHT            |                              | 2PCS  |
| 14  | HGD-12R.04         | BACK WHEEL            |                              | 2PCS  |
| 15  | HGD-48F.03         | CAPACITOR FOR DOOR    |                              | 3PCS  |
| 16  | G350.08            | K SHAPE CLIP          |                              | 32PCS |
| 17  | HGD-48R.18         | SHELF                 |                              | 8PCS  |
| 18  | G350.06            | SHELF SUPPORT         |                              | 8PCS  |
| 19  | 27R.14             | PLUG                  | LT312/1.5MM <sup>2</sup> x3G | 1PC   |
| 20  | HGD-48R.18         | LAMP                  |                              | 1PC   |
| 21  | HGD-72R.05         | LAMP COVER            |                              | 1PC   |
| 22  | HGD-23R.16         | INSIDE LAMP COVER     |                              | 2PCS  |
| 23  | HGD-23F.03         | LED LIGHT             |                              | 4PCS  |
| 24  | HGD-72R.09         | SHELF(MIDDLE)         |                              | 4PCS  |

|    |             |                                  |              |       |
|----|-------------|----------------------------------|--------------|-------|
| 25 | D420.08     | DOOR UP HINGE                    |              | 1PAIR |
| 26 | HGD-72F.10  | FIXED BOARD OF<br>EVAPORATOR     |              | 1PC   |
| 27 | GN650TN.17  | PROBE PADDING                    |              | 1PC   |
| 28 | S900.31     | SENSOR FIXED CLIP                |              | 1PC   |
| 29 | GN650TN.23  | WALL RING                        |              | 2PCS  |
| 30 | HGD-23R.12  | CIRCLE FAN                       |              | 2PCS  |
| 31 | HGD-72F.03  | EVAPORATOR                       |              | 1PC   |
| 32 | D420.40     | WATER PIPER                      |              | 1PC   |
| 33 | HGD-72F.04  | EVAPORATOR WATER PAN             |              | 1PC   |
| 34 | 81F.06      | CIRCLE FAN SUPPORT               |              | 1PC   |
| 35 | HGD-72F.08  | CIRCLE FAN COVER                 |              | 1PC   |
| 36 | 27F.05      | SUCTION PIPE                     | Φ9.52        | 1PC   |
| 37 | HGD-48F.08  | FIXING STRIP                     |              | 1PC   |
| 38 | 27R.15      | CABLE CONNECTOR                  |              | 1PC   |
| 39 | HGD-72F.05  | EVAPORATE PIPE                   | Φ8*0.75      | 1PC   |
| 40 | S900.40A    | WATER BOX                        |              | 1PC   |
| 41 | 81F.08      | COMPRESSOR BEFORE<br>S/N-4010881 | NJ2212GK     | 1PC   |
| 41 | 81F.08DV    | COMPRESSOR AFTER<br>S/N-4010881  |              |       |
| 42 | GN650BT.10  | BASKET GUARD GRILLES             |              | 2PCS  |
| 43 | 27R.32      | CONDENSER FAN                    | CA01-01/Φ230 | 2PCS  |
| 44 | 81F.09      | CONDENSER                        |              | 1PC   |
| 45 | GN1410TN.14 | FILTER DRIER                     | 25g          | 1PC   |
| 46 | 81F.10      | CAPILLARY                        | Φ1.6*3900    | 1PC   |
| 47 | 27F.06      | DRIER SUPPORT                    |              | 1PC   |
| 48 | 81F.11      | UNIT BOARD                       |              | 1PC   |

|    |            |                                  |  |      |
|----|------------|----------------------------------|--|------|
| 49 | HGD-12R.15 | DOOR HINGE /DOWN                 |  | 2PCS |
| 50 | HGD-12F.08 | LED POWER                        |  | 1PC  |
| 51 | D420D.14   | DRAIN PIPE (B)                   |  | 1PC  |
| 52 | D420D.13   | DRAIN PIPE (A)                   |  | 1PC  |
| 53 | HGD-72F.05 | SUPPORT OF<br>EVAPORATOR(LEFT)   |  | 1PC  |
| 54 | HGD-12R.23 | FEET                             |  | 2PCS |
| 55 | HGD-72F.06 | SUPPORT OF<br>EVAPORATOR(LEFT)   |  | 1PC  |
| 56 | HGD-72R.06 | SUPPORT OF LAMP COVER            |  | 1PC  |
| 57 | HGD-72R.07 | LAMP COVER PROTECTOR             |  | 1PC  |
| 58 | HGD-72F.07 | UNIT BOARD GUARD GRILLS          |  | 1PC  |
| 59 | 27F.03     | CONTACTOR                        |  | 2PCS |
| 60 | HGD-72R.08 | DOWN HINGE (MIDDLE)              |  | 1PC  |
| 61 | 27F.10     | DRAIN PIPE HEATER                |  | 1PC  |
| 62 | 81F.04     | DEFROST HEATING ELEMENT          |  | 1PC  |
| 63 | 27F.13     | PROTECTOR FOR HEATING<br>ELEMENT |  | 1PC  |