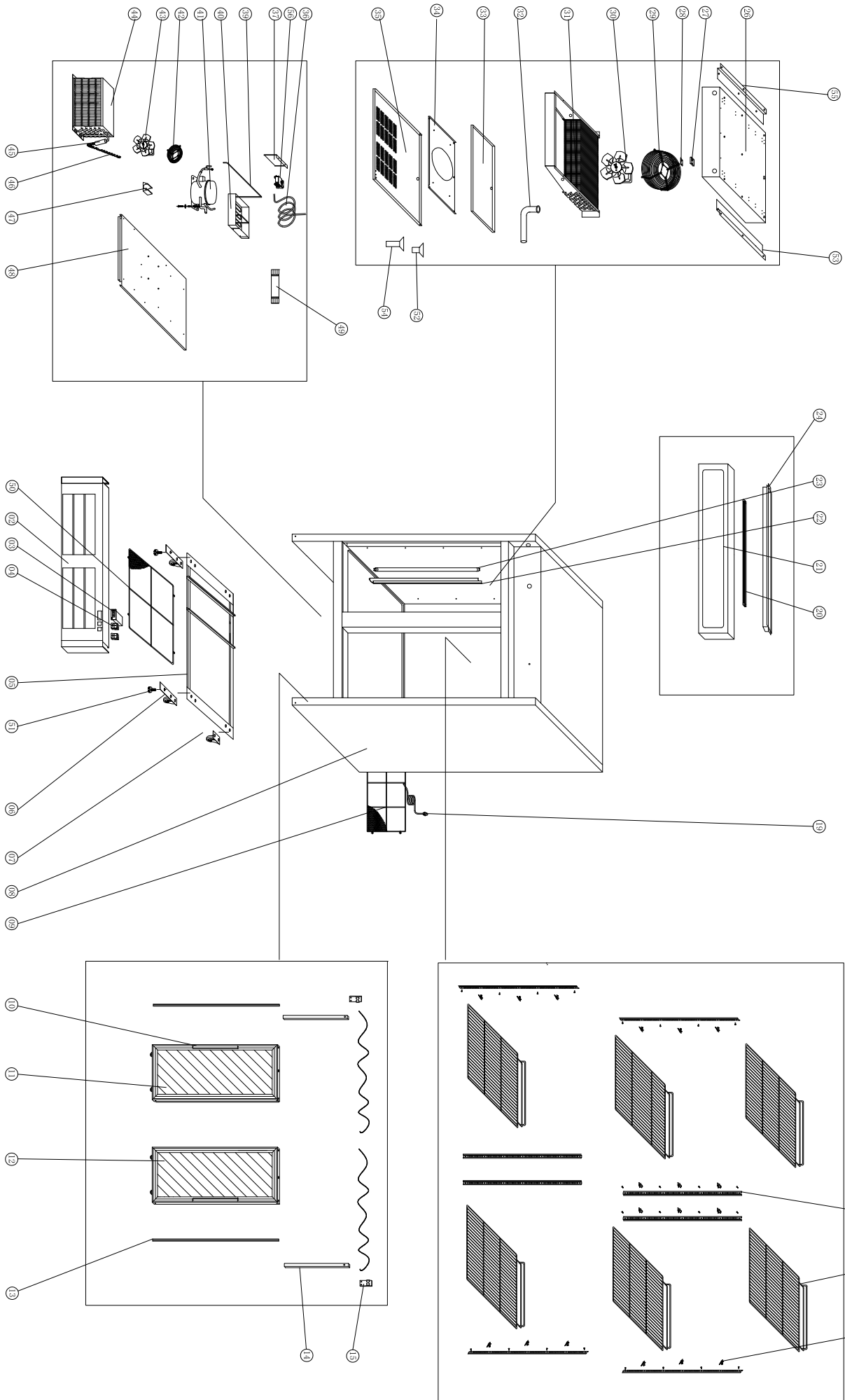


EXPLODE OF HGD-48L



SPARE PARTS LIST OF MXM2-48RS

| N0. | CODE | NAME | MODEL | QUY. |
|-----|------------------------|---------------------------|------------|-------|
| 02 | HGD-48L.09 | FRONT PANEL | | 1PC |
| 03 | 27R.10 | THERMOSTAT | XR20C 115V | 1PC |
| 04 | S900.01 | MAIN SWITCH | DRH-2415-3 | 2PCS |
| 05 | HGD-48L.10 | SUPPORT OF UNIT BOARD | | 2PCS |
| 06 | HGD-12R.02 | FRONT WHEEL | | 2PCS |
| 07 | HGD-12R.04 | BACK WHEEL | | 2PCS |
| 08 | HGD-48L.01 | BODY | | 1PC |
| 09 | HGD-48L.11 | UNIT ROOM COVER | | 1PC |
| 10 | HGD-48L.02 | HANDLE | | 2PCS |
| 11 | HGD-48L.03 | LEFT DOOR | | 1PC |
| 12 | HGD-48L.04 | RIGHT DOOR | | 1PC |
| 13 | HGD-48L.05 | DOOR GASKET | | 2PCS |
| 14 | HGD-48L.06 | COUNTER IRON MASS | | 2PCS |
| 15 | SC250SD.12 | CHAIN WHEEL | | 2PCS |
| 16 | G350.08 | K SHAPE CLIP | | 32PCS |
| 17 | HGD-48L.13 | SHELF | | 8PCS |
| 18 | G350.06 | SHELF SUPPORT | | 8PCS |
| 19 | 27R.10 | PLUG | | 1PC |
| 20 | HGD-48R.18 | LAMP | | 1PC |
| 21 | HGD-48L.08 | LAMP COVER | | 1PC |
| 22 | HGD-48L.12 | INSIDE LAMP COVER | | 2PCS |
| 23 | HGD-23R.17 | INSIDE LAMP | 36W | 2PCS |
| 24 | HGD-48L.07 | LAMP COVER SUPPORT | | 1PC |
| 26 | HGD-48R.04 | FIXED BOARD OF EVAPORATOR | | 1PC |
| 27 | GN650TN.17 | PROBE PADDING | | 1PC |

| | | | | |
|----|------------|---------------------------------|-----------|------|
| 28 | S900.31 | SENSOR FIXED CLIP | | 1PC |
| 29 | GN650TN.23 | WALL RING | | 1PCS |
| 30 | 27R.30 | CIRCLE FAN | CA27-04 | 1PCS |
| 31 | HGD48R.05 | EVAPORATOR | | 1PC |
| 32 | 27R.33 | WATER PIPER | | 1PC |
| 33 | 54R.10 | EVAPORATOR WATER PAN | | 1PC |
| 34 | HGD-48R.11 | CIRCLE FAN SUPPORT | | 1PC |
| 35 | HGD-48F.07 | CIRCLE FAN COVER | | 1PC |
| 36 | 27R.23 | EVAPORATE PIPE | Φ8*0.75 | 1PC |
| 37 | HGD-23F.04 | FIXING STRIP | | 1PC |
| 39 | HGD-23R.17 | EVAPORATE PIPE | Φ8*0.75 | 1PC |
| 40 | S900.40A | WATER BOX | | 1PC |
| 41 | HGD-48R.10 | COMPRESSOR | FFU130HAK | 1PC |
| 42 | GN650BT.10 | BASKET GUARD GRILLES | φ 230 | 1PC |
| 43 | 27R.32 | CONDENSER FAN | CA27-04 | 1PC |
| 44 | GN650BT.13 | CONDENSER | | 1PC |
| 45 | GN650TN.50 | FILTER DRIER | 25g | 1PC |
| 46 | 54R.14 | CAPILLARY | Φ1.4*3000 | 1PC |
| 47 | 27F.06 | DRIER SUPPORT | | 1PC |
| 48 | HGD-48L.14 | UNIT BOARD | | 1PC |
| 49 | HGD-23R.14 | BALLAST | W850 | 1PC |
| 50 | HGD-48R.15 | UNIT BOARD GUARD GRILLS | | 1PC |
| 51 | HGD-12R.24 | FEET | | 2PCS |
| 52 | D420D.14 | DRAIN PIPE (A) | | 1PC |
| 53 | HGD-48R.13 | SUPPORT OF EVAPORATOR(RIGHT) | | 1PC |
| 54 | D420D.13 | DRAIN PIPE (B) | | 1PC |
| 55 | HGD-48R.14 | SUPPORT OF EVAPORATOR(LEFT) | | 1PC |

| | | | | |
|----|--------|-----------|--|-----|
| 56 | 27F.03 | CONTACTOR | | 1PC |
|----|--------|-----------|--|-----|