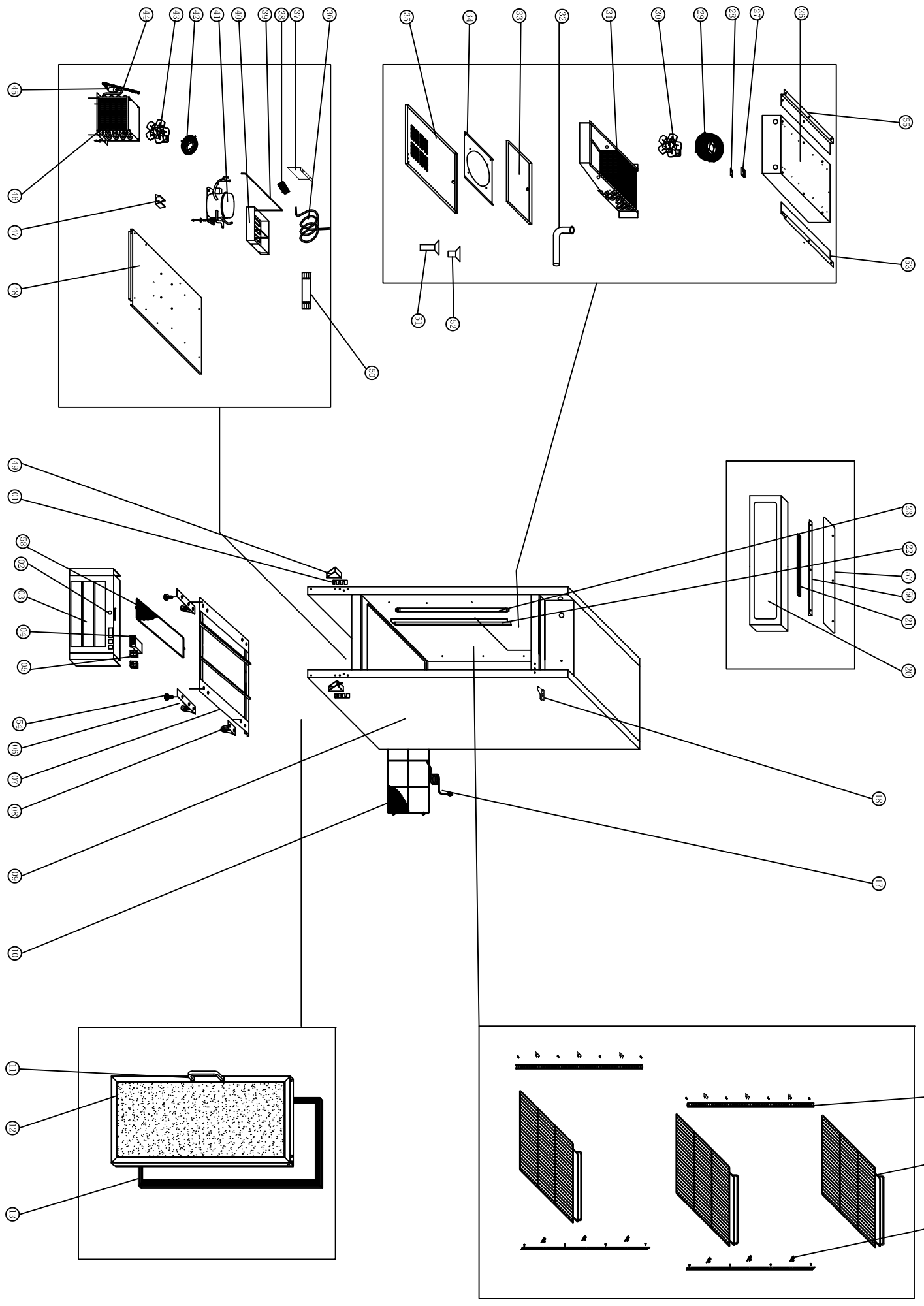


EXPLODE OF MXM1-23R



SPARE PARTS LIST OF MXM1-23R

| NØ. | CODE | NAME | MODEL | QTY. |
|-----|--------------------|---------------------------|------------|-------|
| 01 | HGD12R.17 | WASHER OF DOWN HINGE | | 2PCS |
| 02 | GN650TN.86 | LOCK | | 1PC |
| 03 | HGD-23R.02-M05 | FRONT PANEL | | 1PC |
| 04 | 27R.10 | THERMOSTAT | XR20C | 1PC |
| 05 | S900.01 | MAIN SWITCH | DRH-2415-3 | 2PCS |
| 06 | HGD-12R.02 | FRONT WHEEL | | 2PCS |
| 07 | HGD-23R.03 | SUPPORT OF UNIT BOARD | | 1PCS |
| 08 | HGD-12R.04 | BACK WHEEL | | 2PCS |
| 09 | HGD-23R..04 | BODY | | 1PCS |
| 10 | HGD-23R.07 | UNIT ROOM COVER | | 1PC |
| 11 | U-GNM2100TN.17-M05 | HANDLE | | 1PC |
| 12 | HGD-23R.01-M05 | GLASS DOOR | | 1PC |
| 13 | HGD-23R.15 | GASKET | | 1PC |
| 14 | G350.08 | K SHAPE CLIP | | 16PCS |
| 15 | HGD-23R.28 | SHELF | | 4PCS |
| 16 | G350.06 | SHELF SUPPORT | | 4PCS |
| 17 | 27R.14 | PLUG | #14 | 1PC |
| 18 | D420.08 | DOOR HINGE UP | | 1PAIR |
| 20 | HGD-23R.08 | LAMP COVER | | 1PC |
| 21 | HGD-12R.09 | LAMP | | 1PC |
| 22 | HGD-23R.16 | INSIDE LAMP COVER | | 1PC |
| 23 | HGD-23R.17 | INSIDE LAMP | | 1PC |
| 26 | HGD-23R.18 | FIXED BOARD OF EVAPORATOR | | 1PC |
| 27 | GN650TN.17 | PROBE PADDING | | 1PC |

| | | | | |
|----|----------------------------|---------------------------------|-----------|------|
| 28 | S900.31 | SENSOR FIXED CLIP | | 1PC |
| 29 | GN650TN.23 | WALL RING | | 1PC |
| 30 | HGD-23R.12 | CIRCLE FAN | | 1PC |
| 31 | HGD-23R.05 | EVAPORATOR | | 1PC |
| 32 | D420.40 | WATER PIPER | | 1PC |
| 33 | HGD-23R.06 | EVAPORATOR WATER PAN | | 1PC |
| 34 | 27R.21 | EVAPORATOR FAN SUPPORT | | 1PC |
| 35 | HGD-23R.23 | EVAPORATOR FAN COVER | | 1PC |
| 36 | 27R.23 | SUCTION PIPE | Φ8 | 1PC |
| 37 | HGD-23R.24 | FIXING STRIP | | 1PC |
| 38 | 27R.15 | CABLE CONNECTOR | | 1PC |
| 39 | HGD-23R.25 | EVAPORATE PIPE | Φ8*0.75 | 1PC |
| 40 | S900.40A | WATER BOX | | 1PC |
| 41 | HGD-23R.13 | COMPRESSOR | FFI8.5HAK | 1PC |
| 42 | GN650TN.46 | BASKETC GUARD GRILLS | | 1PC |
| 43 | 27R.32 | CONDENSER FAN | CA27-04 | 1PC |
| 44 | 27R.31 | CAPILLARY | Φ1.4*5000 | 1PC |
| 45 | GN1410TN.14 | FILTER DRIER | 25g | 1PC |
| 46 | GN650TN.38 | CONDENSER | | 1PC |
| 47 | 27F.06 | DRIER SUPPORT | | 1PC |
| 48 | HGD-23R.19 | UNIT BOARD | | 1PC |
| 49 | HGD-12R.15 | DOOR HINGE /DOWN | | 2PCS |
| 50 | HGD-12F.08 | LED POWER SUPPLIER | | 1PC |
| 51 | D420D.13 | DRAIN PIPE (A) | | 1PC |
| 52 | D420D.14 | DRAIN PIPE (B) | | 1PC |
| 53 | HGD-23R.20 | SUPPORT OF EVAPORATOR(RIGHT) | | 1PC |
| 54 | HGD-12R.23 | FEET | | 2PCS |

| | | | | |
|----|------------|--------------------------------|--|-----|
| 55 | HGD-23R.21 | SUPPORT OF EVAPORATOR(LEFT) | | 1PC |
| 56 | HGD-23R.26 | SUPPORT OF LAMP COVER | | 1PC |
| 57 | HGD-23R.27 | LAMP COVER PROTECTOR | | 1PC |
| 58 | HGD-23R.22 | UNIT BOARD GUARD GRILLS | | 1PC |