

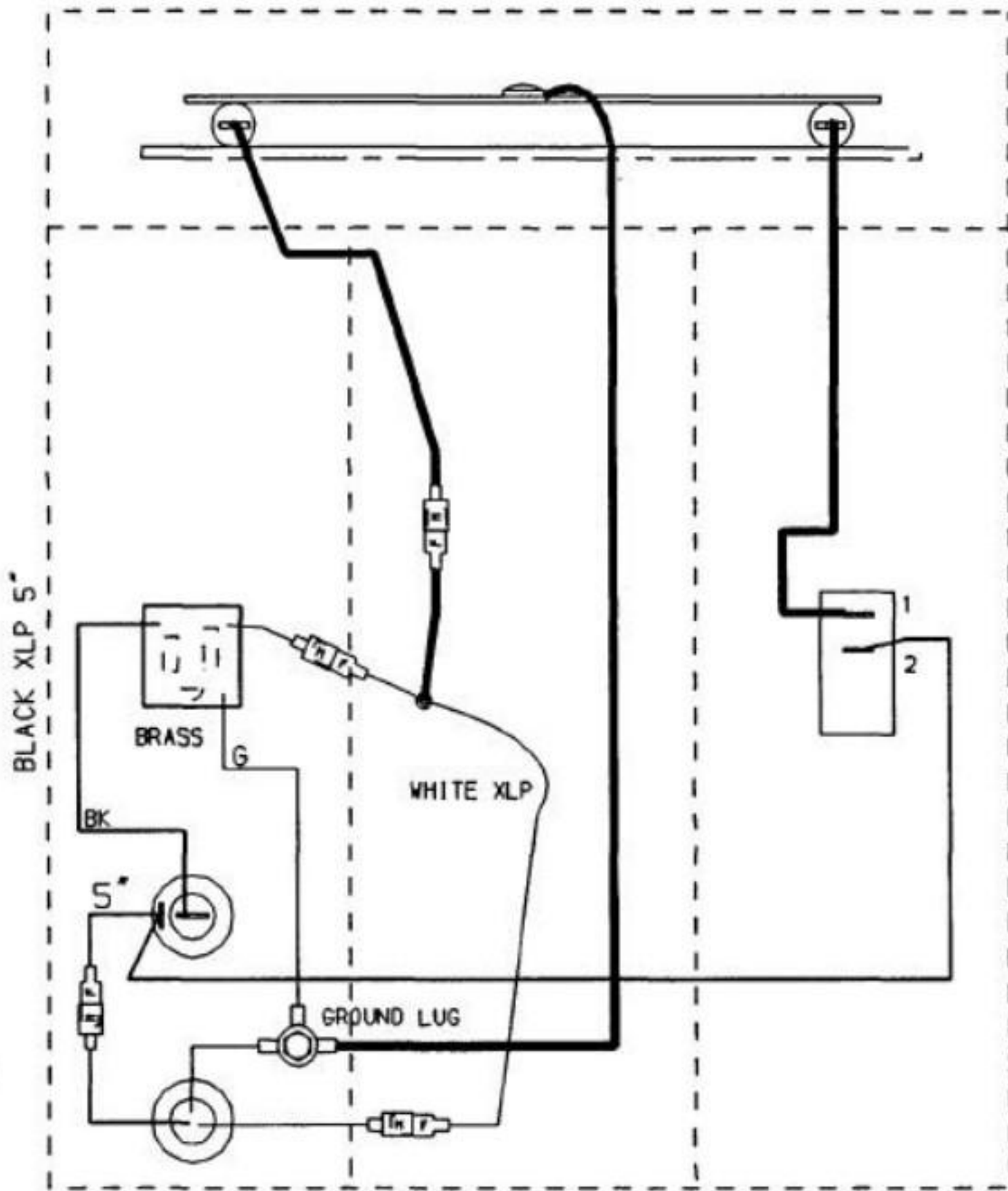
ELEMENT 840W-120V
#501964

RECEPTACLE
#500508

FUSE HOLDER
#500068

CORD #501969

SPLICE CORD BACK 6" FORM END
STRAIN RELIEF
#501193

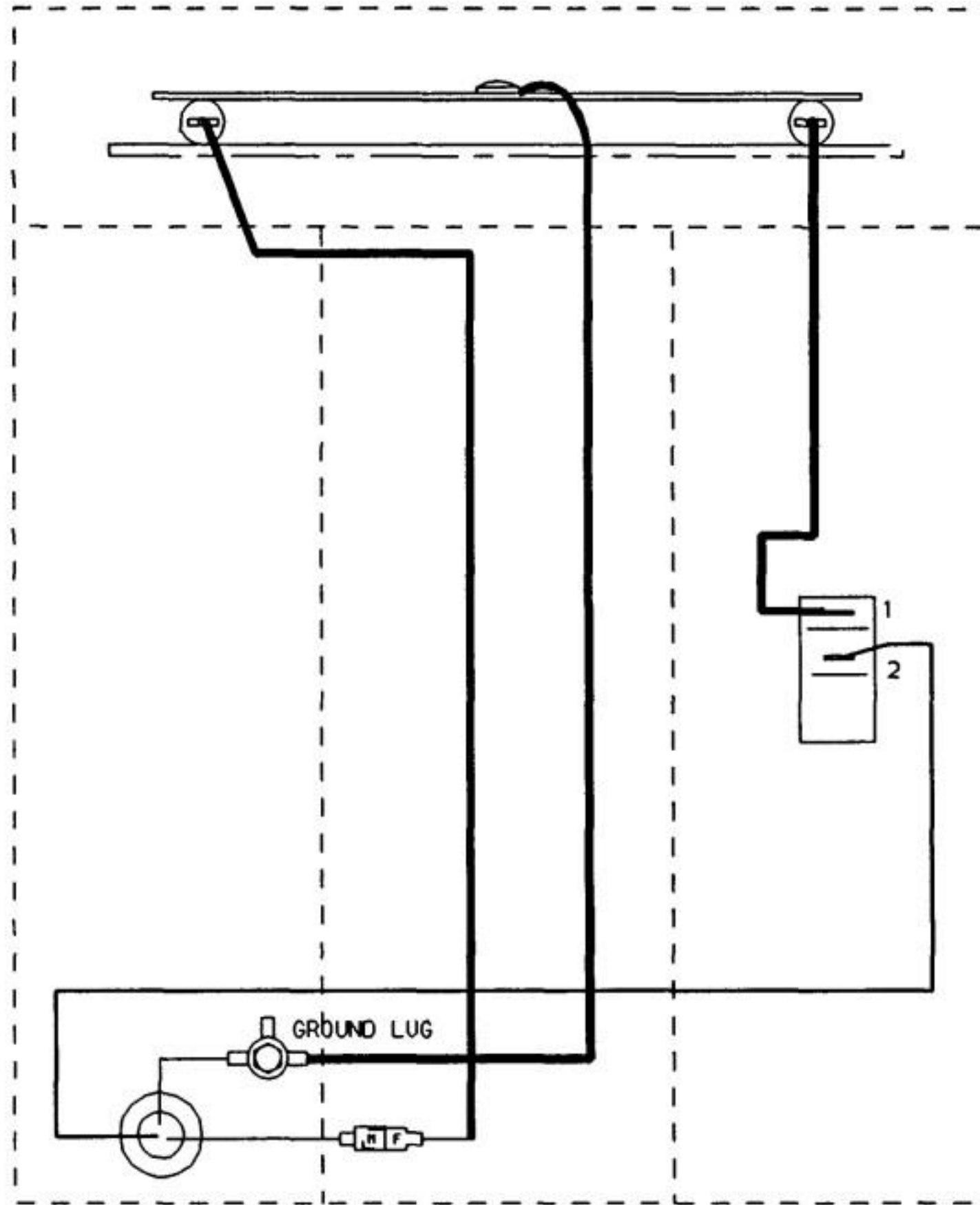


ROCKER
SWITCH
#501864

12 TOTAL AMPS
W/ RECEPTACLE

REV	DATE	DESCRIPTION	J. R.	27-NOV-89	MARSHALL AIR SYSTEMS, INC.		
1	19-APR-1999	WAS 501960 19-APR-99			SCHEMATIC, MM1 120V		
			REFERENCE	A /	DWG NO.	110266	REV 1
				SCALE 1:1	DRAWING MAY BE REDUCED CODE: MM1		

ELEMENT 900W-240V
502567

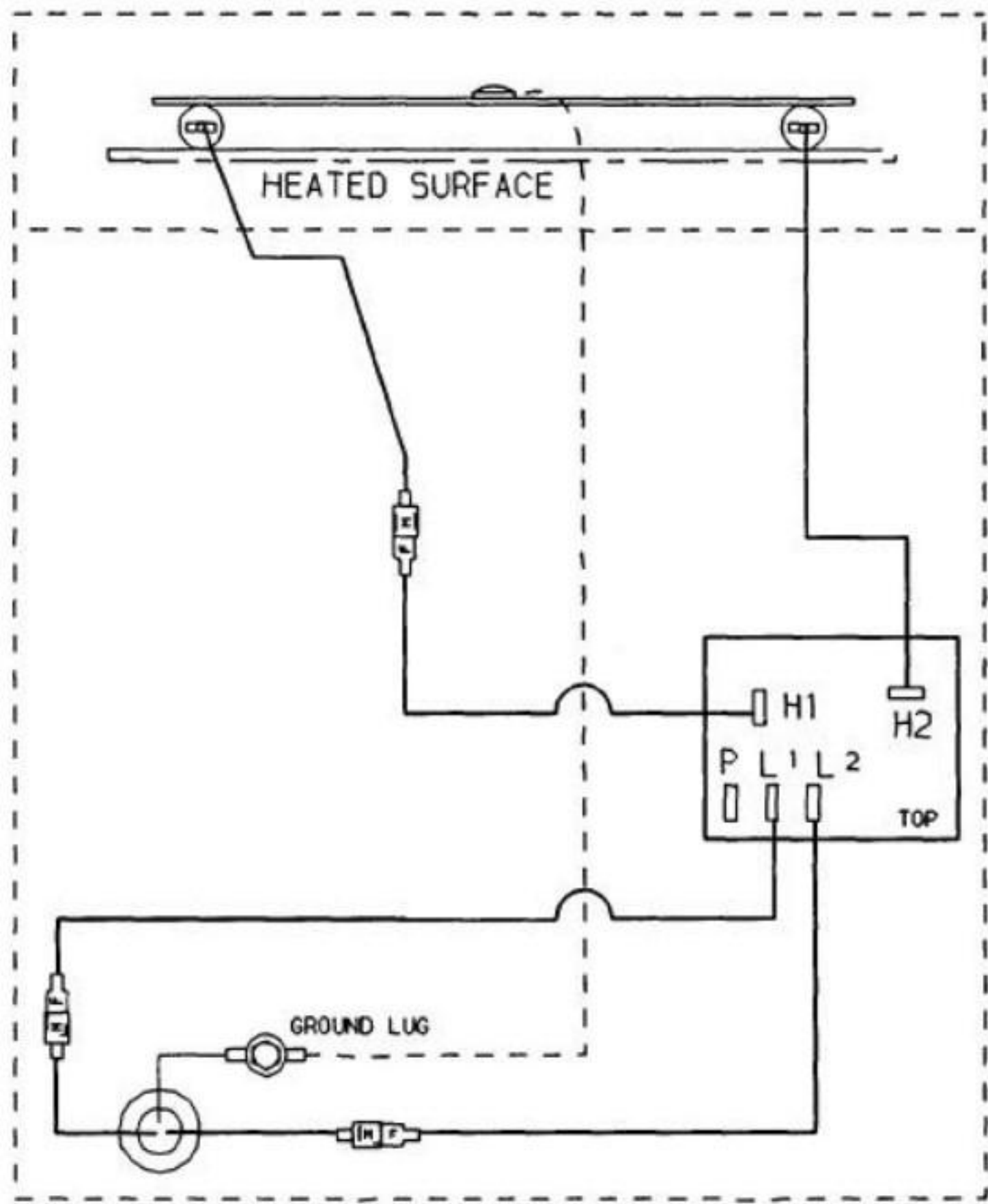


ROCKER
SWITCH
#501864

CORD #501969
SPLICE CORD BACK 6" FROM END
STRAIN RELIEF
#501193

REV	DATE	DESCRIPTION	J. R.	27-NOV-89	MARSHALL AIR SYSTEMS, INC.	
1	19-APR-1995	SWITCH WAS LIGHTED #501960 (PW)			SCHEMATIC, MM1 240V	
			REFERENCE	A /	DWG NO. 118272	REV 1
				SCALE 1:1	IMAGE MAY BE REDUCED	CODE: MM1

ELEMENT 840W-120V
#501964



120 VOLTS 7 AMPS

CORD #501969

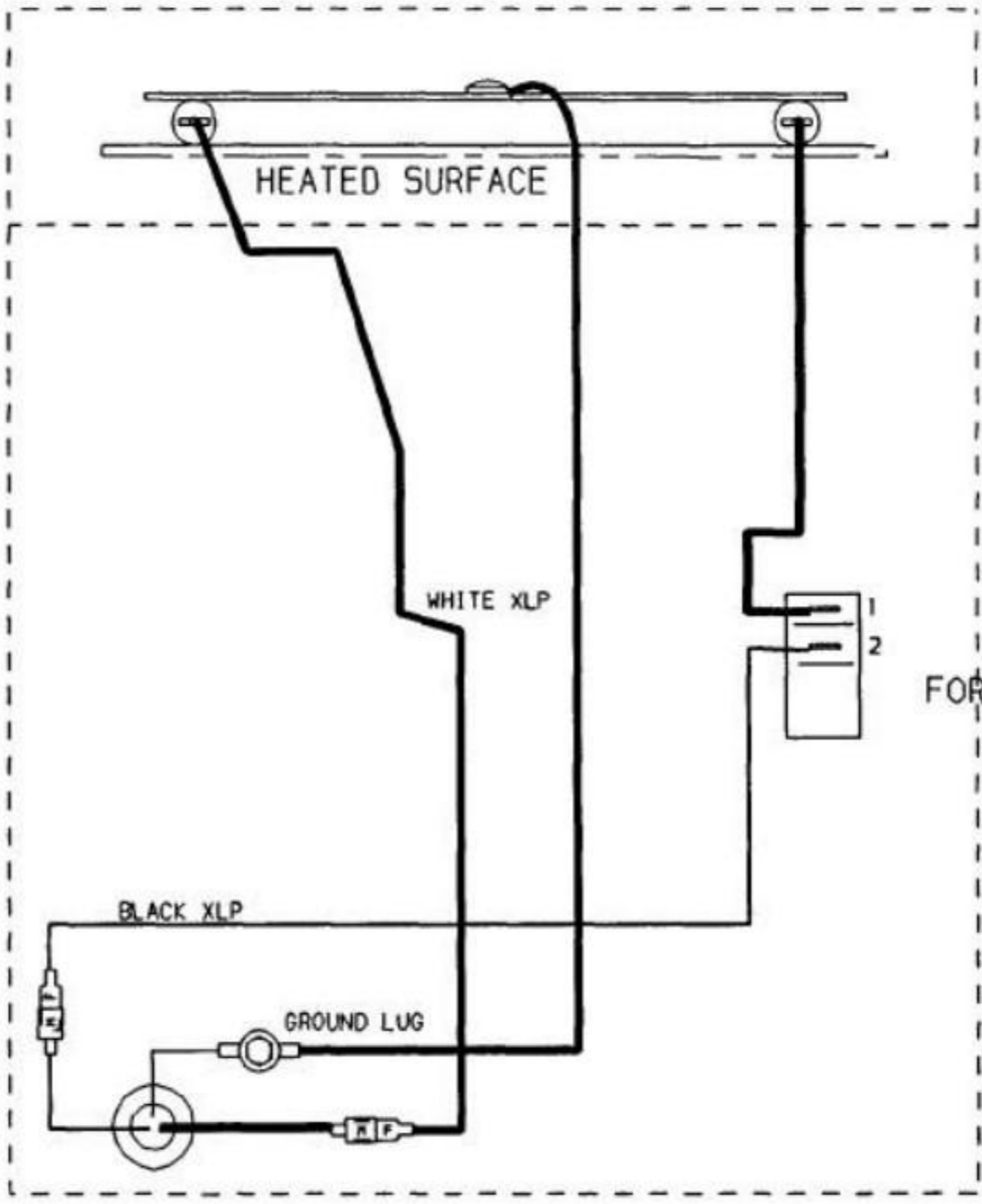
SPLICE CORD BACK 6" FROM END
STRAIN RELIEF
#501193

REV	DATE	DESCRIPTION	J.R.	27-NOV-89	MARSHALL AIR SYSTEMS, INC.		
1	02-JUL-1999	UPDATED TITLE BLOCK, NO CHANGE TO MM1 DESIGN (CP)			SCHEMATIC, MM1C 120V W/FININITE SWITCH, W/O RECPETACLE		
			REFERENCE	SIZE A	PROJ.	DWG NO. 120378	REV 1
				SCALE 1:1	IMAGE MAY BE REDUCED NTS	CODE MM1C	

120 VOLTS 8.3 AMPS

CORD #501969

SPLICE CORD BACK 6" FROM END
STRAIN RELIEF
#501193



ROCKER SWITCH
#501864
FOR MM1 CA4 SERIES

TOGGLE SWITCH
#500789
FOR AP8 SERIES

REV	DATE	DESCRIPTION	J.R.	27-NOV-89	MARSHALL AIR SYSTEMS, INC.		
1	18-OCT-96	CORRECTED RATING FROM 9 TO 8.3 TO MATCH OWNERS MANUAL AND NAMEPLATE (CP)			SCHEMATIC, AP8 MM1 CA4 120V W/O RECEPTACLE AND FUSE		
2	19-APR-1999	SWITCH WAS LIGHTED #501960 (PW)			SIZE PROJ.	DWG NO.	REV
3	27-AUG-1999	ADDED SWITCH 500789 FOR AP8 SERIES (CP)	REFERENCE		A	118710	3
					SCALE IMAGE MAY BE REDUCED	CODE:	
					1:1 NTS	MM1 AP8 AP8C CA4	