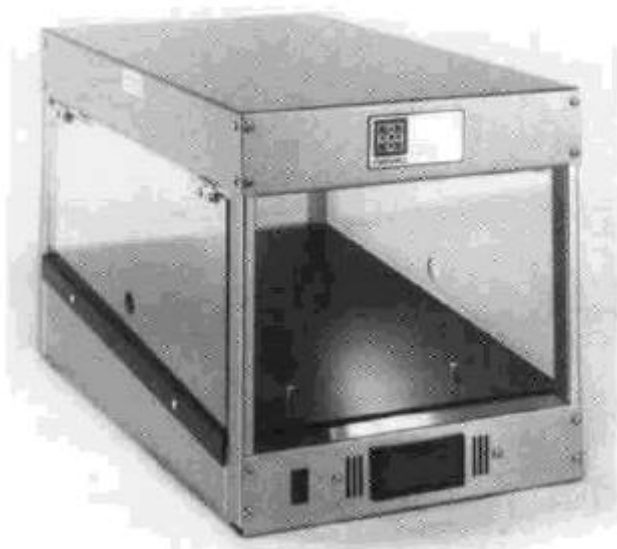


OWNER'S MANUAL

MODEL KK6 - MULTI-PRODUCT HOLDING UNIT



Supplier Name: **MARSHALL AIR SYSTEMS, INC.**
Address: 419 Peachtree Drive South
Charlotte, NC 28217
Serial #: _____
Date Received: _____
Date Installed: _____
Telephone #: 704-525-6230
Toll Free #: 800-722-3474 Customer Service
Fax #: 704-525-6229
Service Referral #: 800-722-3474
Local Service: _____
Local Service #: _____

MANUFACTURER'S INTRODUCTION

The Model KK6 Series Multi-Product Holding Unit features Marshall's own ThermoGlo™ heating technology. Heat radiates from every square inch of the upper and lower flat plate heating surfaces. This eliminates the need to clean intricate calrod, wire and reflector assemblies. This unit is equipped with Lexan® doors on three sides to prevent drafts and provide easy access. A precision digital display and digital "set point" temperature controller maintain consistent product temperature.

GENERAL SPECIFICATIONS

Height: 15 1/2"
Width: 14 3/8"
Depth: 23 5/8"
Electrical: 110/120 volts AC 605 watts
60 Hz/6 amps
Power Cord: 6 ft. 3 wire grounding type UL rating
Weight: 45 lbs.
Note: Illumination with (2) 40 watt food grade coated bulbs
Accessories: (1) Stacking kit (optional)
KK6A - W/(3) Pans, Lids & Stack Unit
KK6B - W/(3) Pans, and Stainless Steel Grates
Approvals: UL and NSF
Shipping Dimensions:
Height: 17 1/2"
Width: 16 1/4"
Depth: 25 3/4"
Weight: 54 lbs.



TABLE OF CONTENTS

INSTALLATION..... 1

DAILY CHECKLIST AND CLEANING GUIDE..... 1 -2

MONTHLY MAINTENANCE.....2

TROUBLESHOOTING CHART.....3

REPLACEMENT PARTS LIST AND ILLUSTRATION.....4-5

COMPLETE STACKING KIT P/N 110057.....6

THERMOGLO™ & HEATED HOLDING CABINET LIMITED WARRANTY..... 7

THERMOGLO™ & HEATED HOLDING CABINET WARRANTY RETURN
PROCEDURES..... 8

ILLUSTRATIONS

REPLACEMENT PARTS ILLUSTRATION.....FIGURE 1, PAGE 5

WIRING SCHEMATIC (KK6, KK6A, KK6B) 120V..... DWG 112620



MODEL KK6 - MULTI-PRODUCT HOLDING UNIT

INSTALLATION

PRE-INSTALLATION

The Multi-Product Holding Unit is packaged to minimize the risk of shipping damage. Immediately upon receipt, make certain to inspect the unit for damage. **FILE ALL CLAIMS WITH THE FREIGHT CARRIER.**

FINAL INSTALLATION

1. Unpack unit and remove all protective paper or plastic covering from metal parts and Lexan® doors. NOTE: THE SCREWS HOLDING THE LEXAN® DOORS ARE TO BE LOOSE TO ALLOW FOR HEAT EXPANSION.
2. Place holding unit on stable base. Make sure louvers at back of unit, next to power cord, are not blocked.
3. If unit is to be stacked, see Stacking Kit Installation Instructions, Page 5
4. Plug unit into an AC 120V receptacle.

DAILY CHECKLIST AND CLEANING GUIDE

TO USE THE MULTI-PRODUCT HOLDING UNIT

1. Turn on the power switch. The unit is ready to use after a 20-minute preheat period.
2. The temperature controller on the front of the unit is factory set for 175°F. With the control "ON", the actual temperature is displayed. The range of set points available is from 140°F to 200°F.

CHANGING THE SET POINT

CAUTION: PRESS ONLY WITH SOFT PART OF FINGER - DO NOT PUSH WITH SHARP OBJECT.

FOR UNITS WITH SERIAL NO. 89021859 AND HIGHER:

The faceplate of the control is either black or gray. The set point may be verified or changed as follows:

IF BLACK: depress the set button to view the set point. To change set point, use Up/Down arrow to select new set point while holding set button down.

IF GRAY: depress the set button and RELEASE to view set point. To change set point, push "set" and within three seconds, use Up/Down arrow to select new set point.

FOR UNITS WITH SERIAL NO. 89021858 AND LOWER:

The "set point" can be checked by depressing the set button on the controller. The setting is adjustable and may be changed by turning the small screw on the face of the controller while holding the red button down. When the button is released the actual temperature is displayed.



MODEL KK6 - MULTI-PRODUCT HOLDING UNIT

3. If pans are to be used, place them in unit.
4. Wait one hour to stabilize the temperature.
5. Check the surface temperature on the unit digital display to see if it is $175^{\circ}\text{F} \pm 10^{\circ}\text{F}$.
6. If the digital display temperature is outside of the specified range, remove the pans, wait two minutes, then check the actual surface temperature 6" from the front in the center. This should be $185^{\circ}\text{F} \pm 10^{\circ}\text{F}$. Note that the surface temperature is higher when the pans are removed.

CLEANING CHECKLIST

1. Turn off the unit and allow it to cool for 20 minutes.
2. Pans, lids and wire grates should be removed, washed in mild multi-purpose detergent, rinsed and sanitized.
3. Clean unit and base with a damp cloth or non-abrasive cleaner. **DO NOT IMMERSE UNIT IN WATER! DO NOT USE CAUSTIC CLEANING SOLUTIONS!**
4. Allow sufficient drying time before attempting to use.

MONTHLY MAINTENANCE

1. Follow the daily cleaning checklist; there are no periodic adjustments.
2. Check the condition of the two light bulbs located under the top cover. If these fail, do the following:
 - A. Unplug the unit.
 - B. Remove the bulb(s) by carefully unscrewing them from their sockets.
 - C. Replace the bulb(s) with a manufacturer's approved replacement part. (See parts list page 4.)
3. Check airflow through unit by feeling air at louvers on back of unit or checking for air draw at slots on front on each side of temperature controller. If no movement felt, cooling fan is not working. Call a qualified service technician to make repair.
4. Observe condition of Lexan® side panels. If excessively scratched and/or cracked, replace.
5. Inspect condition of cord/plug. If damaged, have it replaced.



MODEL KK6 - MULTI-PRODUCT HOLDING UNIT

TROUBLE SHOOTING CHART

**** DISASSEMBLING HEATER VOIDS WARRANTY ****

Identify problem in the left-hand column and look for probable cause and solution in right-hand column. Probable causes listed in the order they are most likely to happen. This sequence should be used to isolate the problem.

<u>PROBLEM</u>	<u>PROBABLE CAUSE</u>	<u>SOLUTION</u>
1. No Light/No Heat	Unplugged Circuit breaker is tripped Cord/plug defective	Plug in Reset breaker - call electrician if tripped twice Replace cord/plug
2. No Light/With Heat	Light bulbs burned out	Unplug unit and replace bulbs
3. Light/No Heat	Defective heating unit assembly	Replace heating unit assembly
4. No Heat at Base	Defective wiring/temperature controller	Replace Wiring/temperature controller
5. Low Product Temperature	Set point too low Excessive air draft	Reset to 175°F Move unit
6. Heat at Base too High	Defective temperature controller	Replace defective temperature controller
7. Heat at Base too Low	Defective sensor, temperature controller or heating element	Replace sensor, temperature controller or heating element
8. Display reads "EEE"	Disconnected or defective sensor	Reconnect or replace sensor



MODEL KK6 - MULTI-PRODUCT HOLDING UNIT

REPLACEMENT PARTS LIST (See Figure 1 for Diagram)

<u>ITEM</u>	<u>PART#</u>	<u>DESCRIPTION</u>
1	501867	Rubber Feet
2	114542	Temperature Controller *See Note)
3	502248	Transformer 120V to 12V
4	501864	Rocker Switch
5	110042	Fan
6	501882 501957	Lower Heating Element 120V Lower Heating Element 220V
7	502169	Sensor
8	111894	Bumper Pin Replacement Set (see Page 6)
9	109872	ThermoGlo™
10	501865	Lampholder
11	502239	Coated Bulb
12	119892 109797	Optional Right Lexan® Side Panel With Stiffener Angle (KK6C Model) Lexan® Side Panel (no stiffener angle)
13	501069	Hinge
14	119893 109798	Optional Lexan® Rear Panel With Stiffener Angle (KK6C Model) Lexan® Rear Panel (no stiffener angle)
15	501193	Cord Strain Relief
16	109868	6 Ft. Cord w/Plug
17	109845	Lexan® panel, front (Optional)
18	501930	Hinge screws, 10-32 x 1/2"
19	501355	Nut 10-32
20	120918 109797	Optional Left Lexan® Side Panel With Stiffener Angle (KK6C Model) Lexan® Side Panel (no stiffener angle)
21	109782	Platen Surface
22	117038	Temperature Controller Conversion (See Note Below)
Not Shown	503413	Kit, Temp. Control Faceplate REF:132574 Centigrade to Fahrenheit

- Note: If Temperature Controller Face looks like controller "A", order #114542. (See Figure 1)
If Temperature Controller Face looks like controller "B", order #117038. (See Figure 1)



MODEL KK6 - MULTI-PRODUCT HOLDING UNIT

REPLACEMENT PARTS ILLUSTRATION

FRONT VIEW OF CONTROLLER "A"



#114542 TEMP. CONTROLLER "A"

FRONT VIEW OF CONTROLLER "B"



#501869 TEMP. CONTROLLER "B"

*SEE NOTE BELOW

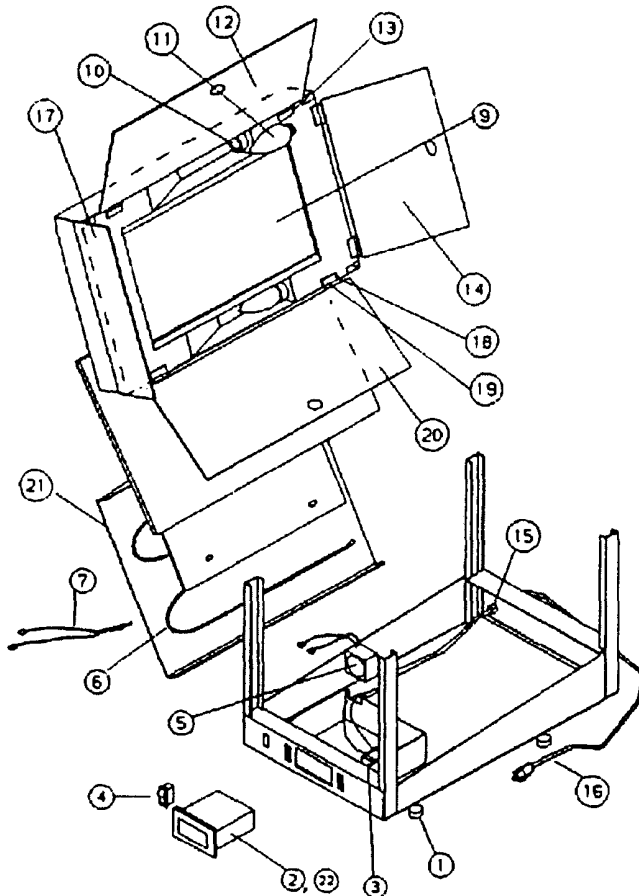


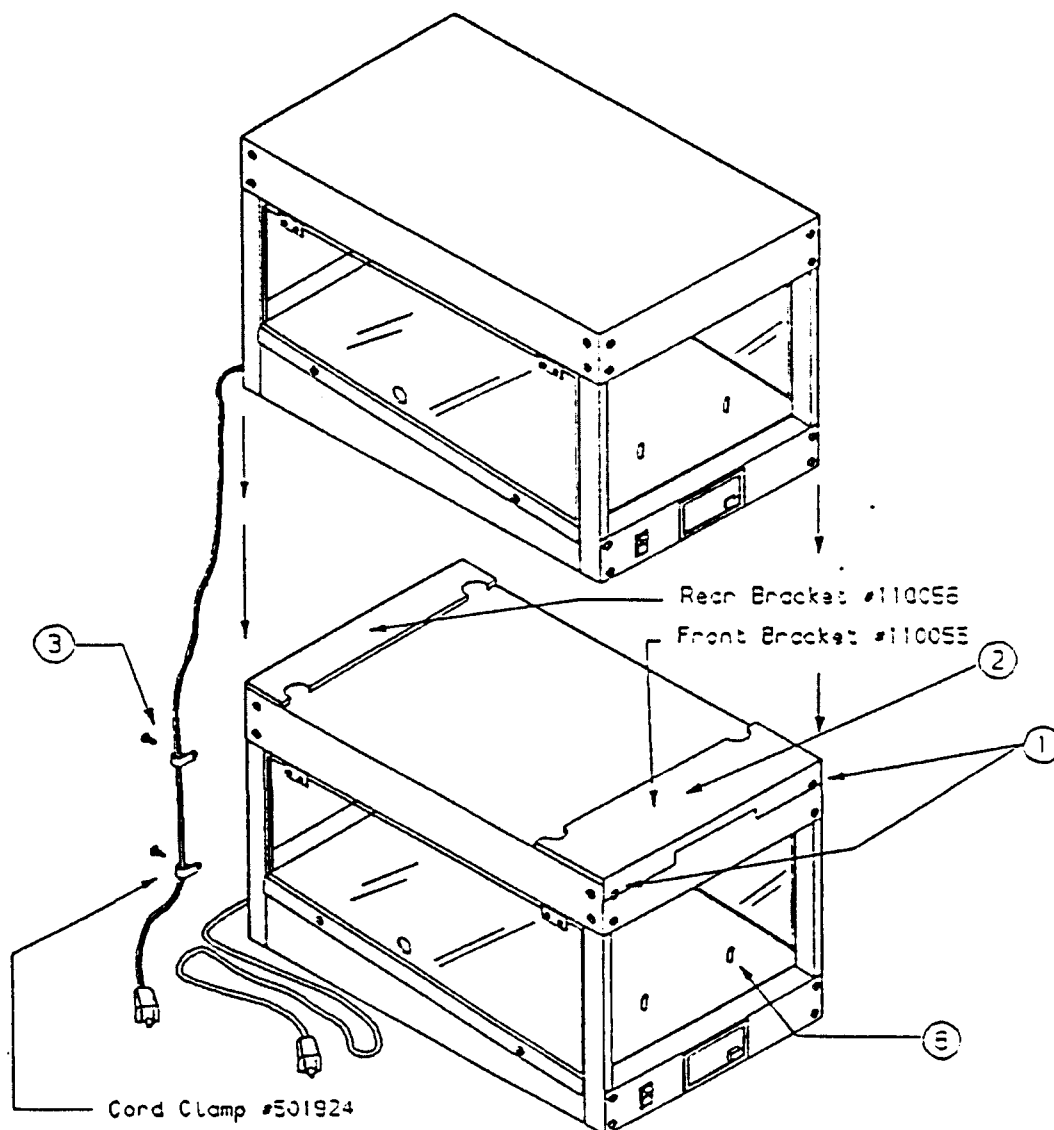
FIGURE 1
REPLACEMENT
PARTS
ILLUSTRATION



MODEL KK6 - MULTI-PRODUCT HOLDING UNIT

STACKING KIT INSTALLATION INSTRUCTIONS

1. When mounting units, be sure the rubber feet of the top unit are securely placed in the notches on the brackets.
2. After stacking the two units, remove the two screws located on the rear side.
3. Mount the cord clamps and route the cord along the rear leg, as shown.



COMPLETE STACKING KIT PART #110057



THERMOGLO™ AND HEATED HOLDING CABINET LIMITED WARRANTY

MARSHALL AIR SYSTEMS, INC., ("Marshall") warrants to the first purchaser ("Purchaser") all new equipment of its manufacture to be free of defects in material and factory workmanship for a period of one year from date of shipment provided that (i) the equipment is installed in the Continental United States, Canada or Hawaii and operated according to the Owner's Manual while located at the original address of installation, (ii) the warranty registration card has been completed and returned to the factory within fifteen (15) days after installation. Marshall's obligation under this warranty is limited to the repair or replacement at its option of any defective part. It is understood that Marshall's obligation with respect to equipment located outside the Continental United States, Canada or Hawaii is limited to replacement parts only.

Because Marshall does not and cannot control Purchaser's installation, use, and maintenance of equipment manufactured by Marshall, this warranty **DOES NOT COVER:**

1. Any equipment calibration.
2. Switches.
3. Plugs and cords.
4. Blown fuses or bulbs.
5. Any component disassembled in the field or that has broken seals.
6. Any replacement parts used on the equipment which are not purchased from Marshall.
7. Accessory components not installed and/or manufactured by Marshall.
8. Water or grease accumulation, which will cause electrical failures.
9. Labor, except that provided at Marshall's factory.
10. Damage due to improper or lack of cleaning, abuse and/or service.

SHIPPING DAMAGE must be reported to the carrier and is not covered under this warranty. Marshall will not be liable for damage as a result of improper installation, misuse, abuse, alteration of original design, incorrect voltage, unauthorized service, breakage of fragile items, or any other damage caused by an act out of Marshall's control.

The effect of corrosion, fire, and normal wear on the equipment or component parts is not covered by this warranty. This warranty does not cover cooking performance, smoke capture or holding temperatures which is a function of food types, textures, temperatures, equipment line ups and other variables chosen by the Purchaser and over which Marshall has no control. This warranty does not apply to damage caused by accident or to damage caused by the negligence of Purchaser or the employees of Purchaser or to damage caused by lightning generated electrical current or any other Act of God whatsoever. This warranty does not apply to any equipment bearing a serial number which has been tampered with or altered. Marshall reserves the right to accept or reject any such claim in whole or in part. Marshall will not accept the return of any product without prior written approval from Marshall, and all such approved returns shall be made at Purchaser's sole expense.

THIS WARRANTY IS IN LIEU OF ALL OTHER WARRANTIES, EXPRESS OR IMPLIED, INCLUDING THE IMPLIED WARRANTY OF MERCHANTABILITY AND THE IMPLIED WARRANTY OF FITNESS FOR A PARTICULAR PURPOSE, OR PATENT OR OTHER INTELLECTUAL PROPERTY RIGHT INFRINGEMENT, AND EXCEPT FOR THE EXPRESS WARRANTY CONTAINED HEREIN, THE EQUIPMENT IS SOLD "AS IS." REMEDIES UNDER THIS WARRANTY AND UNDER ANY WARRANTY THAT MAY SURVIVE THE DISCLAIMER OF WARRANTIES ARE LIMITED EXCLUSIVELY TO THOSE REMEDIES DESCRIBED ABOVE. NO OTHER REMEDY IS AVAILABLE UNDER THIS WARRANTY OR ANY OTHER WARRANTY. NEITHER THIS WARRANTY NOR ANY OTHER WARRANTY COVERS, AND MARSHALL WILL NOT BE RESPONSIBLE FOR, ANY INCIDENTAL OR CONSEQUENTIAL DAMAGES, INCLUDING BUT NOT LIMITED TO THE COST OF DISASSEMBLY AND SHIPMENT OF THE EQUIPMENT, PRODUCTION OR PRODUCT LOSSES, INJURY TO OTHER PROPERTY, OR LOST PROFITS RESULTING FROM THE USE OF OR INABILITY TO USE THE PRODUCTS OR FROM THE PRODUCTS BEING INCORPORATED IN OR BECOMING A COMPONENT OF ANY OTHER PRODUCT OR GOODS, OR OTHER LOSSES. WHERE, DUE TO OPERATION OF LAW, CONSEQUENTIAL AND INCIDENTAL DAMAGES CANNOT BE EXCLUDED, THEY ARE EXPRESSLY LIMITED IN AMOUNT TO THE PURCHASE PRICE OF THE EQUIPMENT.

FOR INTERNATIONAL INSTALLATIONS - PLEASE CONTACT YOUR LOCAL MARSHALL AIR SYSTEMS RECOGNIZED DISTRIBUTOR.



**THERMOGLO™ AND HEATED HOLDING CABINET WARRANTY
RETURN PROCEDURES**

I. RETURN GOODS AUTHORIZATION FOR PARTS:

For prompt warranty parts replacement and RGA processing, please call Marshall's Customer Service Department at 800-722-3474 or 704-525-6230 for assistance. In all cases, a Return Goods Authorization (RGA) number must be issued by Marshall Air Systems, Inc. Unauthorized returns will not be processed.

Option #1: Purchaser to return part(s) prepaid to Factory, Marshall to repair or replace at own expense if defective, and ship part(s) back to Purchaser prepaid.

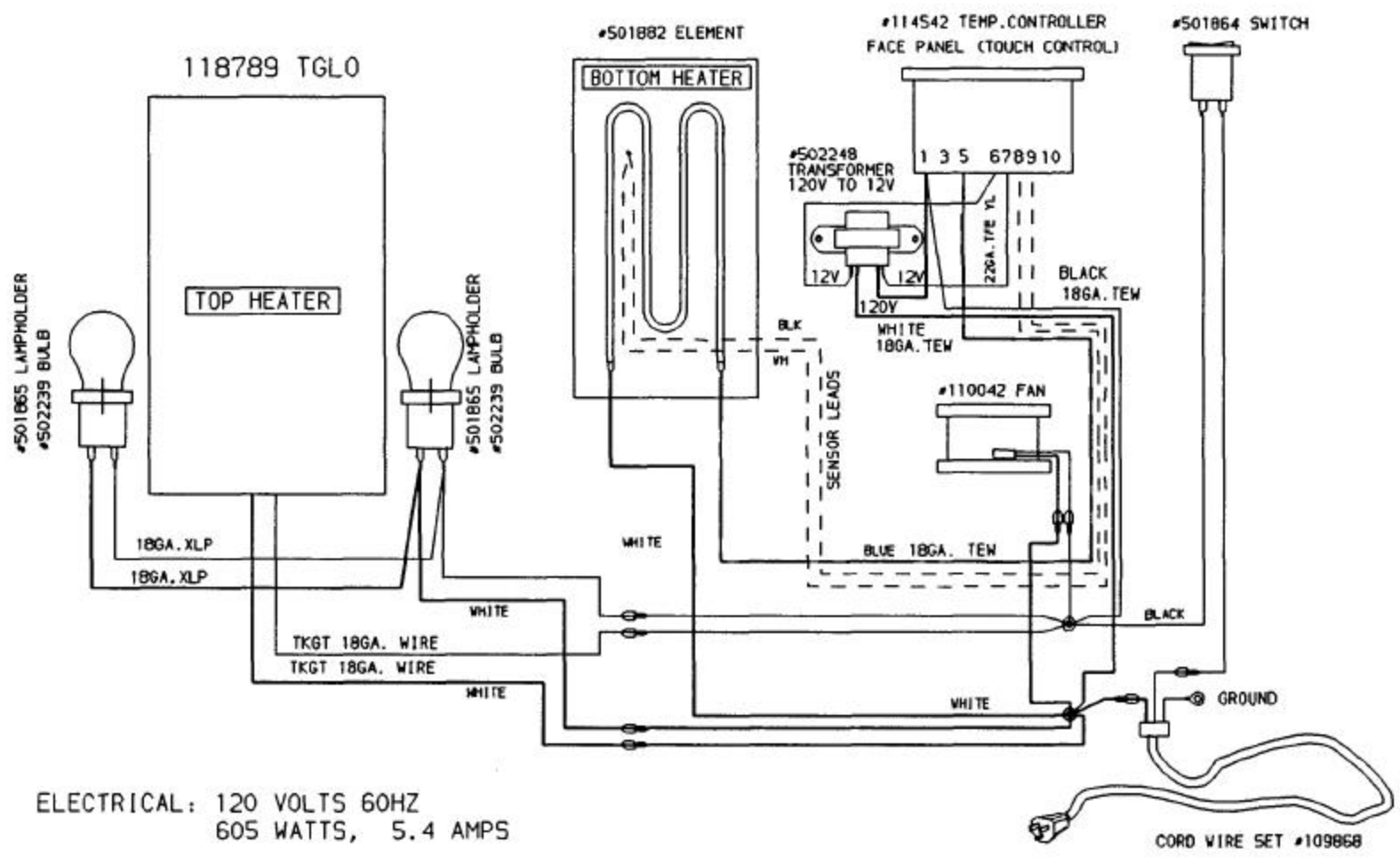
Option #2: Marshall to furnish replacement part(s) freight prepaid with or without requesting return of the defective part(s).

Option #3: Purchaser may obtain replacement part(s) from recognized service agency.

II. NON-WARRANTY RETURNS:

All items returned for customer cancellations are subject to a 20% restocking fee. In the event of an error by Marshall Air Systems, Inc., a Returned Goods Authorization will be issued for full credit. Custom fabricated parts are not returnable.

**FOR INTERNATIONAL INSTALLATIONS -- PLEASE CONTACT YOUR LOCAL
MARSHALL AIR SYSTEMS RECOGNIZED DISTRIBUTOR.**



ELECTRICAL: 120 VOLTS 60HZ
605 WATTS, 5.4 AMPS

REV	DATE	DESCRIPTION	C.P.	10-MAR-97	MARSHALL AIR SYSTEMS, INC.			
1	10-MAR-97	114542 WAS 120786 [CP]			SCHEMATIC, KK6 KK6A KK6B 120V			
2	22-JUL-97	SENSOR LEAD WIRES WERE ORANGE [PW]			MULTIPRODUCT HOLDING UNIT			
3	01-JUN-98	118789 TGLO WAS 501871 [CP]			SIZE	PROJ.	DWG NO.	REV
4	01-JUL-1999	DELETED CORD PURCH. PART NO. [PW]			A		112620	4
REFERENCE					SCALE	IMAGE MAY BE REDUCED	CODE:	
---					1:1	NTS	KK6	