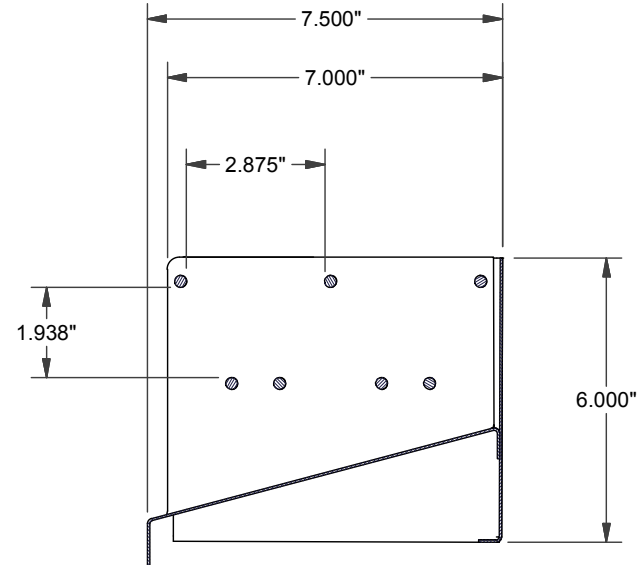
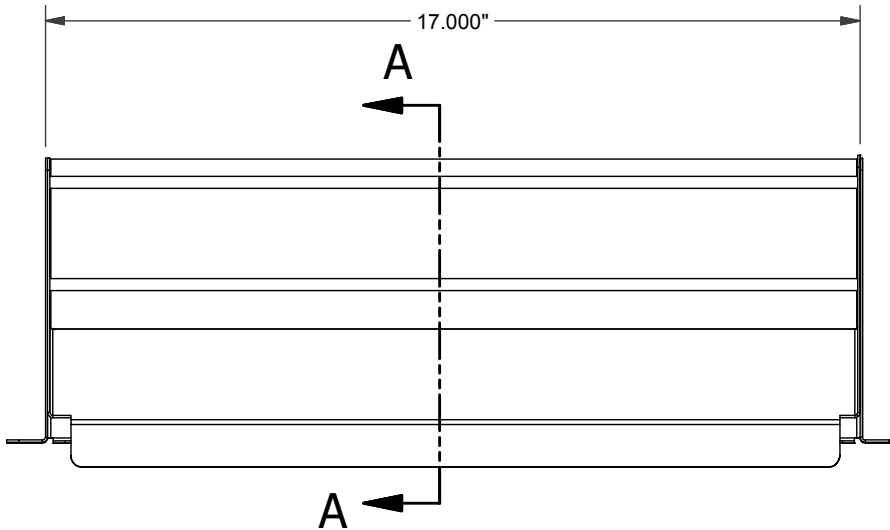
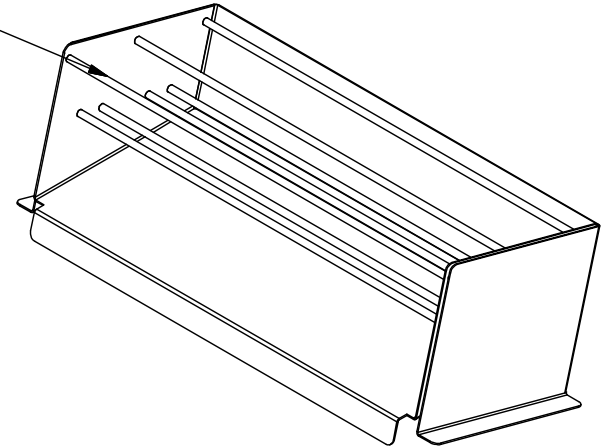
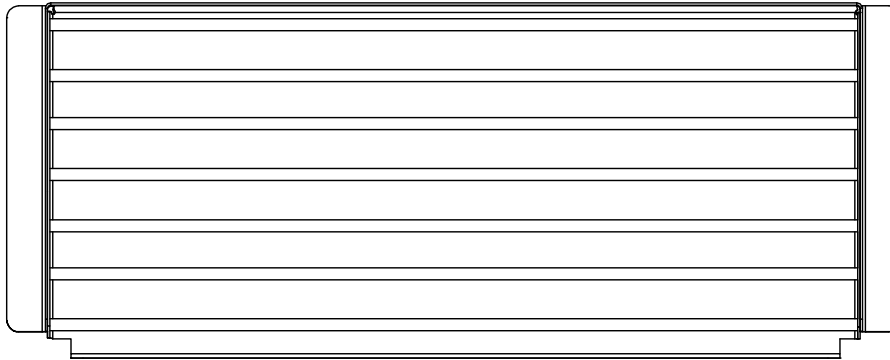


Parts List			
ITEM	PART NO.	DESCRIPTION	QTY
1	163036	ROD WRAP	1
2	163037	BAGHOLDER WRAP	1
3	163038	ROD	7

STN STEEL ROD  
DIVIDERS TO HOLD  
PRODUCT



SECTION A-A

REVISION HISTORY			
REV	DESCRIPTION	DATE	BY

This drawing is property of Marshall Air Systems, Inc. and contains confidential and proprietary information of Marshall Air Systems, Inc.. This drawing is provided to the recipient on loan only for the purposes of reference, installation, use and/or maintenance of the depicted equipment of Marshall Air Systems, Inc., and no other purpose. This drawing shall not be copied, reproduced, loaned, disposed of, or otherwise disclosed to any third party, either directly or indirectly except in carrying out the aforesaid purposes, and shall be returned to Marshall Air Systems, Inc. upon request. The recipient's acceptance of this drawing shall be deemed to constitute express consent and agreement to the forgoing terms.

DRAWN BY: N.G.	DATE: 11/4/2013
GENERIC NAME:	
PRODUCT LINE: FAB	PRODUCT CLASS: HHC
MATERIAL: <b>REFERENCE</b>	

<b>MARSHALL AIR SYSTEMS, INC.</b>			
<b>BAGHOLDER, DOUBLE ROW FOR RETROFITS</b>			
SIZE: <b>A</b>	ROUTING: <b>ASBYWD</b>	DWG. NO.: <b>163035</b>	REV.: <b>0</b>
SCALE: <b>1:4</b>	IMAGE MAY BE REDUCED <b>NTS</b>	CODE: <b>BM162350</b>	

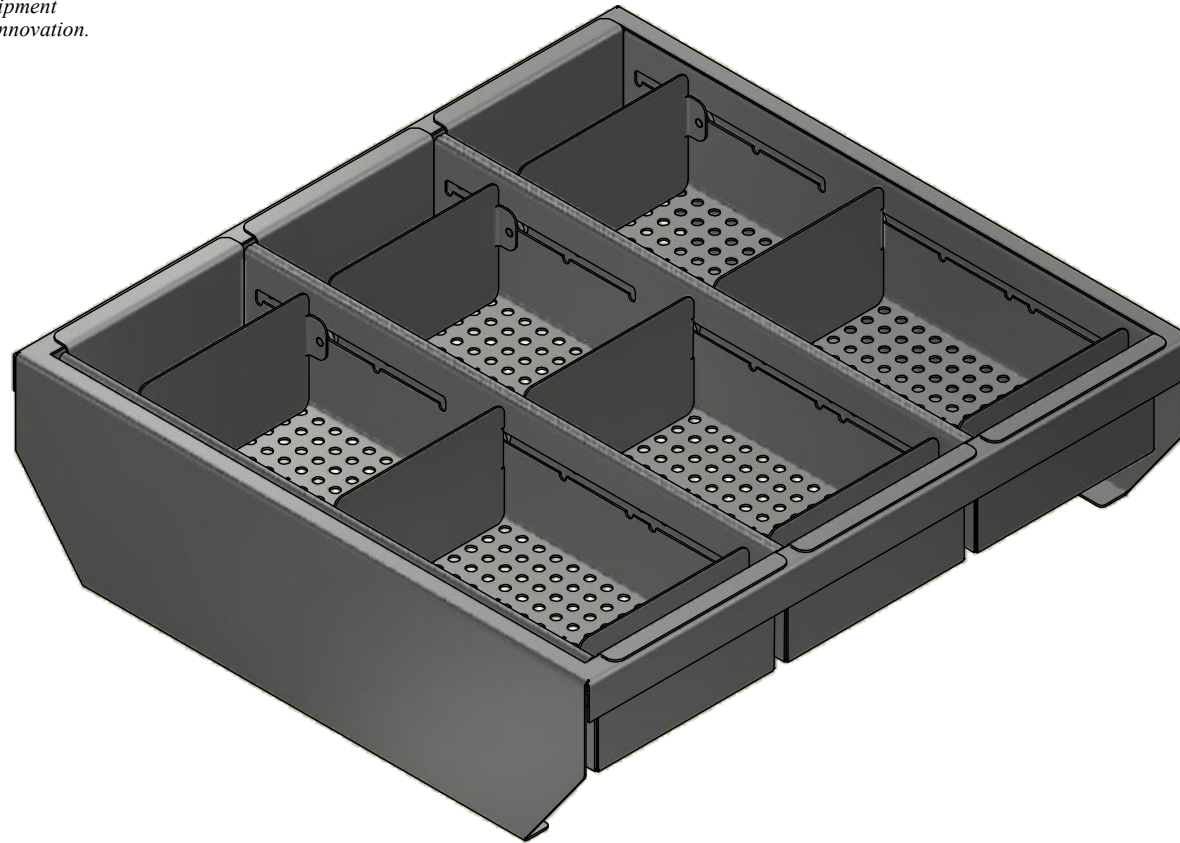


Marshall Air Systems, Inc.  
 419 Peachtree Drive South  
 Charlotte, NC 28217  
 (704) 525 - 6230

*Food Service Equipment  
 Engineered with Innovation.*

**GENERAL SPECIFICATIONS:**

HEIGHT: 5.000"  
 WIDTH: 17.875"  
 DEPTH: 17.000"



This drawing is property of Marshall Air Systems, Inc. and contains confidential and proprietary information of Marshall Air Systems, Inc.. This drawing is provided to the recipient on loan only for the purposes of reference, installation, use and/or maintenance of the depicted equipment of Marshall Air Systems, Inc., and no other purpose. This drawing shall not be copied, reproduced, loaned, disposed of, or otherwise disclosed to any third party, either directly or indirectly except in carrying out the aforesaid purposes, and shall be returned to Marshall Air Systems, Inc. upon request. The recipient's acceptance of this drawing shall be deemed to constitute express consent and agreement to the forgoing terms.

DRAWN BY: PW		DATE: 9/25/2012		<b>MARSHALL AIR SYSTEMS, INC.</b>				
GENERIC NAME: ORGANIZER								<b>ORGANIZER, PRODUCT FOR FOR ARBYS DUMP STATION</b>
PRODUCT LINE: FAB		PRODUCT CLASS: HHC		SIZE: A		ROUTING: ASBY	DWG. NO.: 160098	
MATERIAL: REFERENCE				SCALE: 1:4		IMAGE MAY BE REDUCED NTS		CODE: BM160098

REVISION HISTORY			
REV	DESCRIPTION	DATE	BY
1	WAS 4 PANS, ADDED DIVIDER	9/30/12	PW

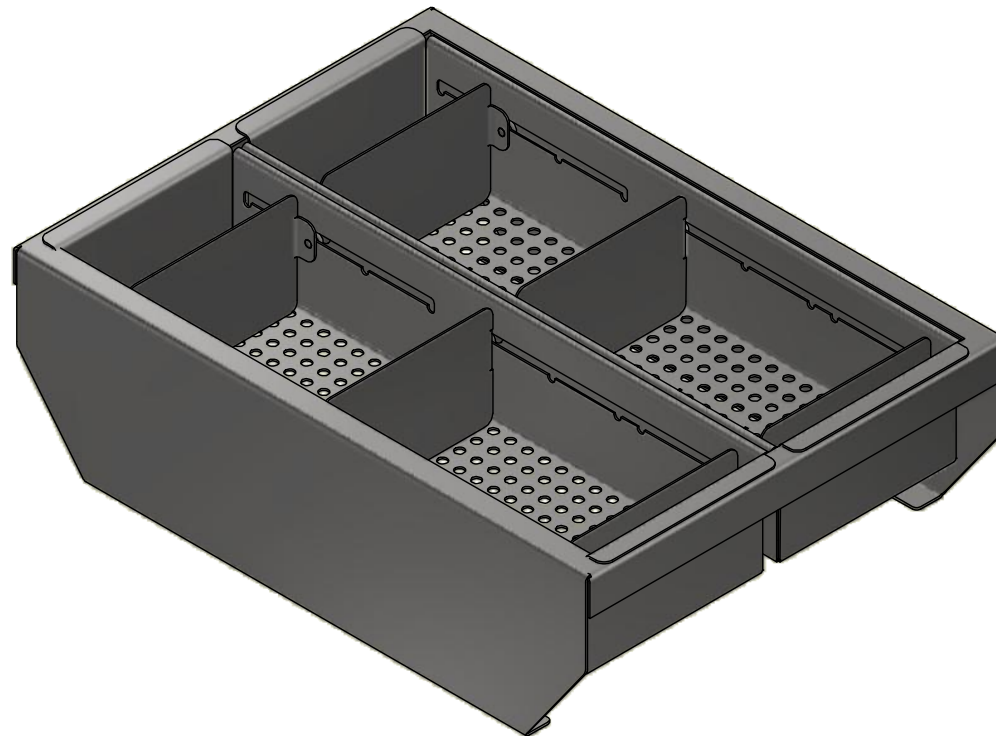


Marshall Air Systems, Inc.  
 419 Peachtree Drive South  
 Charlotte, NC 28217  
 (704) 525 - 6230

*Food Service Equipment  
 Engineered with Innovation.*

**GENERAL SPECIFICATIONS:**

HEIGHT: 5.000"  
 WIDTH: 12.375"  
 DEPTH: 17.000"



This drawing is property of Marshall Air Systems, Inc. and contains confidential and proprietary information of Marshall Air Systems, Inc.. This drawing is provided to the recipient on loan only for the purposes of reference, installation, use and/or maintenance of the depicted equipment of Marshall Air Systems, Inc., and no other purpose. This drawing shall not be copied, reproduced, loaned, disposed of, or otherwise disclosed to any third party, either directly or indirectly except in carrying out the aforesaid purposes, and shall be returned to Marshall Air Systems, Inc. upon request. The recipient's acceptance of this drawing shall be deemed to constitute express consent and agreement to the forgoing terms.

DRAWN BY: PW		DATE: 12/6/2012		<b>MARSHALL AIR SYSTEMS, INC.</b>				
GENERIC NAME: ORGANIZER								<b>ORGANIZER, 2 PAN PRODUCT FOR FOR ARBYS DUMP STATION</b>
PRODUCT LINE: FAB		PRODUCT CLASS: HHC		SIZE: A		ROUTING: ASBY	DWG. NO.: 160098-2	
MATERIAL: REFERENCE				SCALE: 1:4		IMAGE MAY BE REDUCED NTS		CODE: BM160098-2

REVISION HISTORY			
REV	DESCRIPTION	DATE	BY

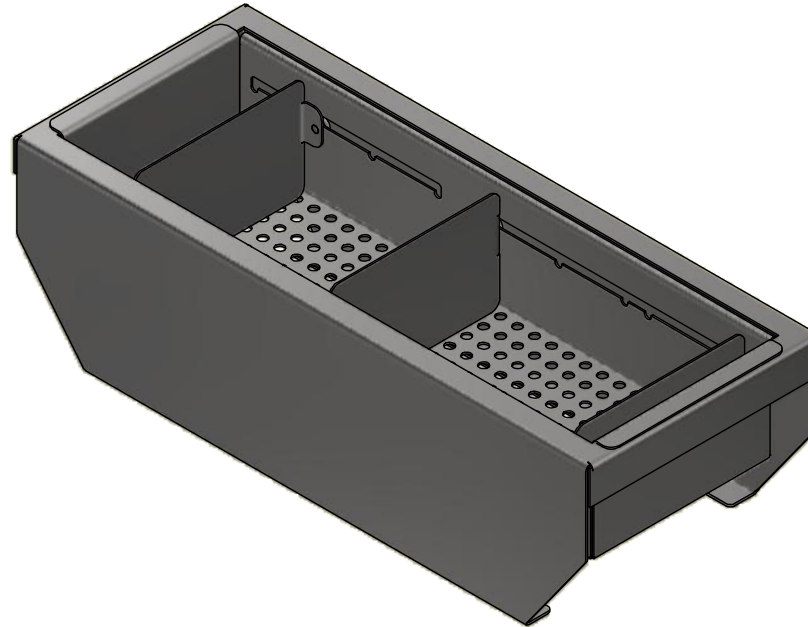


Marshall Air Systems, Inc.  
 419 Peachtree Drive South  
 Charlotte, NC 28217  
 (704) 525 - 6230

*Food Service Equipment  
 Engineered with Innovation.*

**GENERAL SPECIFICATIONS:**

HEIGHT: 5.000"  
 WIDTH: 6.875"  
 DEPTH: 17.000"



This drawing is property of Marshall Air Systems, Inc. and contains confidential and proprietary information of Marshall Air Systems, Inc.. This drawing is provided to the recipient on loan only for the purposes of reference, installation, use and/or maintenance of the depicted equipment of Marshall Air Systems, Inc., and no other purpose. This drawing shall not be copied, reproduced, loaned, disposed of, or otherwise disclosed to any third party, either directly or indirectly except in carrying out the aforesaid purposes, and shall be returned to Marshall Air Systems, Inc. upon request. The recipient's acceptance of this drawing shall be deemed to constitute express consent and agreement to the forgoing terms.

DRAWN BY: PW		DATE: 1/14/2013		<b>MARSHALL AIR SYSTEMS, INC.</b>				
GENERIC NAME: ORGANIZER								<b>ORGANIZER, 1 PAN PRODUCT FOR ARBYS DUMP STATION</b>
PRODUCT LINE: FAB		PRODUCT CLASS: HHC		SIZE: A		ROUTING: ASBY	DWG. NO.: <b>160098-1</b>	
MATERIAL: <b>REFERENCE</b>				SCALE: 1:4		IMAGE MAY BE REDUCED NTS		CODE: BM160098-1

REVISION HISTORY			
REV	DESCRIPTION	DATE	BY

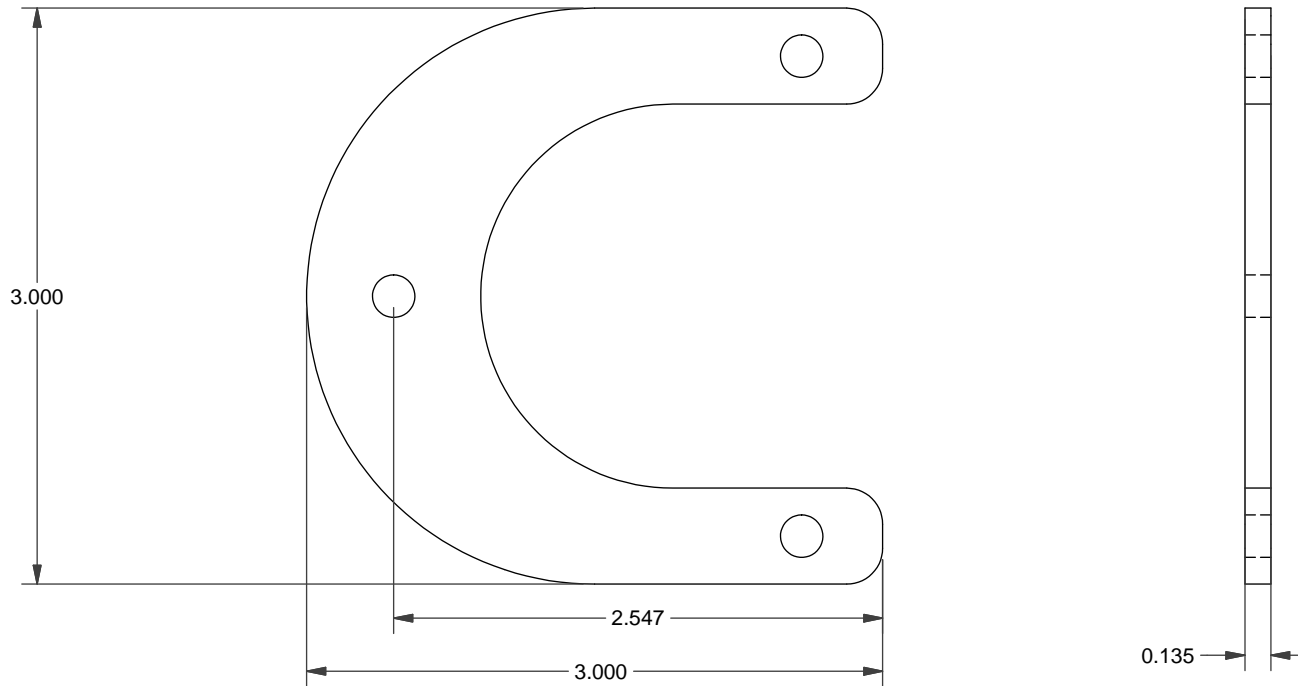


Marshall Air Systems, Inc.  
 419 Peachtree Drive South  
 Charlotte, NC 28217  
 (704) 525 - 6230

*Food Service Equipment  
 Engineered with Innovation.*

**KIT INCLUDES:**

- (2) 153796 FOOT PAD(WITH ANTIMICROBIAL COATING)
- (4) 501348 NUT
- (4) 501548 FLAT WASHER
- (4) 501555 LOCK WASHER
- (4) 503233 SCREW 2" LONG



FOOT PAD DIMENSIONS

**REVISION HISTORY**

REV	DESCRIPTION	DATE	BY
1	UPDATED KIT LIST	9/28/2009	J.L.
2	REMOVED BIZERBA TEMPLATE, INFO	8/29/2012	PW

DRAWN BY: J.L.	DATE: 8/4/2009
GENERIC NAME: LAYOUT	
PRODUCT LINE: FAB	PRODUCT CLASS: HHC
MATERIAL: <b>REFERENCE</b>	
— X —	

**MARSHALL AIR SYSTEMS, INC.**

**KIT, SLICER FOOT PAD  
 FOR BW4B-1, BW4B-2 RETROFIT**

This drawing is property of Marshall Air Systems, Inc. and contains confidential and proprietary information of Marshall Air Systems, Inc.. This drawing is provided to the recipient on loan only for the purposes of reference, installation, use and/or maintenance of the depicted equipment of Marshall Air Systems, Inc., and no other purpose. This drawing shall not be copied, reproduced, loaned, disposed of, or otherwise disclosed to any third party, either directly or indirectly except in carrying out the aforesaid purposes, and shall be returned to Marshall Air Systems, Inc. upon request. The recipient's acceptance of this drawing shall be deemed to constitute express consent and agreement to the forgoing terms.

SIZE: A	ROUTING: ASBY	DWG. NO.:	153642	REV.:	2
SCALE: 1:4	IMAGE MAY BE REDUCED NTS	CODE:	BW4B-1 BW4B-2		