

SERVICE PARTS LIST FOR MITSUBISHI ELECTRIC PACKAGED AIR-CONDITIONERS

Series : PUHY-P•T(S)JMU-A(-BS)
PUHY-P•Y(S)JMU-A(-BS)

For use with the R410A

REVISED

Nov. 2015

BWE0932C

INDEX

PUHY-P72TJMU-A(-BS)
PUHY-P96TJMU-A(-BS)
PUHY-P120TJMU-A(-BS)
PUHY-P144TJMU-A(-BS)
PUHY-P72YJMU-A(-BS)
PUHY-P96YJMU-A(-BS)
PUHY-P120YJMU-A(-BS)
PUHY-P144YJMU-A(-BS)

Refer to the next page for the package names.

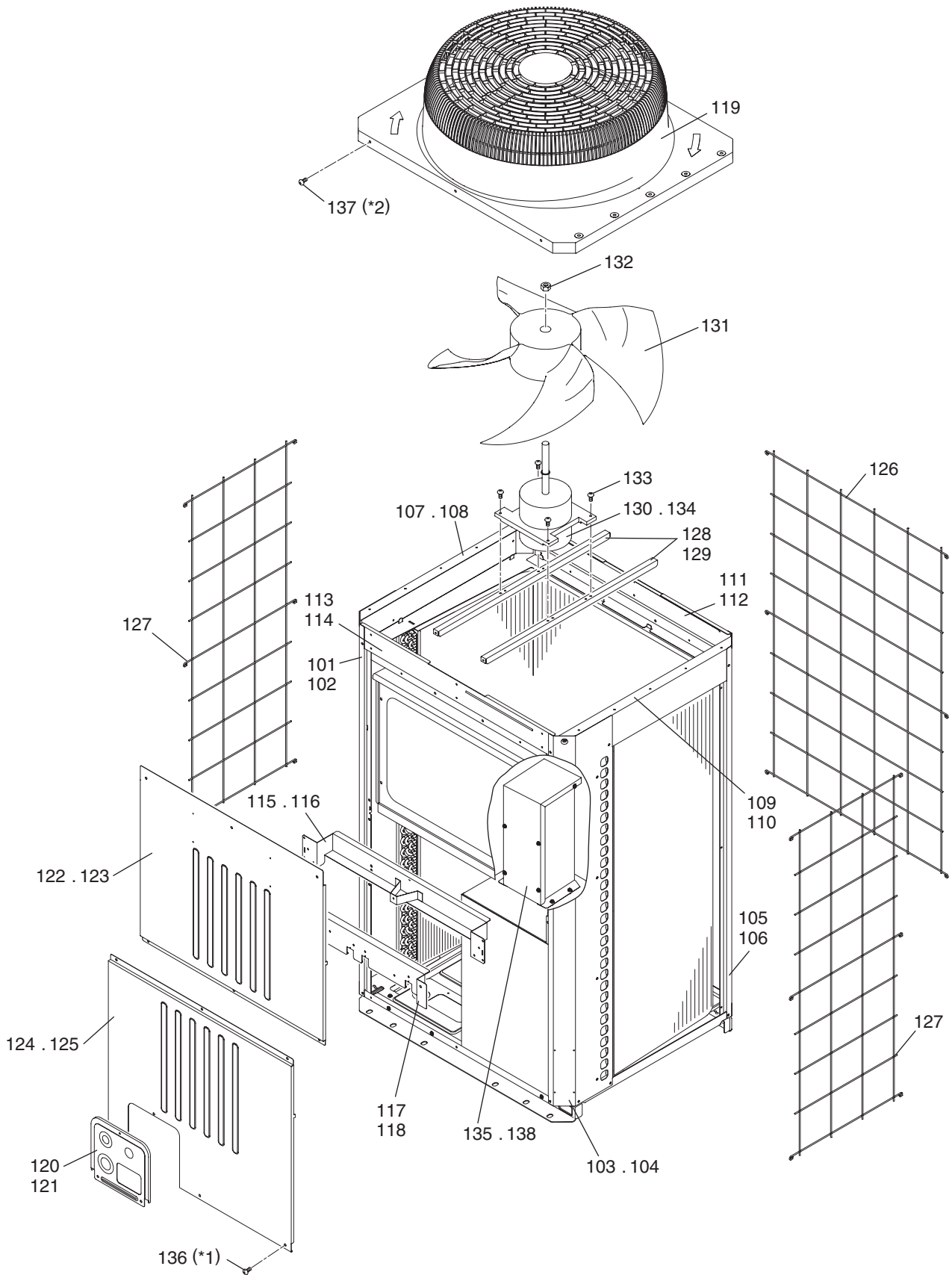
Part information update day : 2015/10/28

Please change the old catalog (issued Aug. 2012, No.BWE0932B) to this new catalog.
Content of revision : Some of parts are changed.



The Package name list

PUHY-P168TSJMU-A(-BS)	[PUHY-P72TJMU-A(-BS) + PUHY-P96TJMU-A(-BS)]
PUHY-P192TSJMU-A(-BS)	[PUHY-P72TJMU-A(-BS) + PUHY-P120TJMU-A(-BS)]
PUHY-P216TSJMU-A(-BS)	[PUHY-P96TJMU-A(-BS) + PUHY-P120TJMU-A(-BS)]
PUHY-P240TSJMU-A(-BS)	[PUHY-P120TJMU-A(-BS) + PUHY-P120TJMU-A(-BS)]
PUHY-P264TSJMU-A(-BS)	[PUHY-P120TJMU-A(-BS) + PUHY-P144TJMU-A(-BS)]
PUHY-P288TSJMU-A(-BS)	[PUHY-P144TJMU-A(-BS) + PUHY-P144TJMU-A(-BS)]
PUHY-P312TSJMU-A(-BS)	[PUHY-P72TJMU-A(-BS) + PUHY-P120TJMU-A(-BS) + PUHY-P120TJMU-A(-BS)]
PUHY-P336TSJMU-A(-BS)	[PUHY-P96TJMU-A(-BS) + PUHY-P120TJMU-A(-BS) + PUHY-P120TJMU-A(-BS)]
PUHY-P360TSJMU-A(-BS)	[PUHY-P96TJMU-A(-BS) + PUHY-P120TJMU-A(-BS) + PUHY-P144TJMU-A(-BS)]
PUHY-P168YSJMU-A(-BS)	[PUHY-P72YJMU-A(-BS) + PUHY-P96YJMU-A(-BS)]
PUHY-P192YSJMU-A(-BS)	[PUHY-P72YJMU-A(-BS) + PUHY-P120YJMU-A(-BS)]
PUHY-P216YSJMU-A(-BS)	[PUHY-P96YJMU-A(-BS) + PUHY-P120YJMU-A(-BS)]
PUHY-P240YSJMU-A(-BS)	[PUHY-P120YJMU-A(-BS) + PUHY-P120YJMU-A(-BS)]
PUHY-P264YSJMU-A(-BS)	[PUHY-P120YJMU-A(-BS) + PUHY-P144YJMU-A(-BS)]
PUHY-P288YSJMU-A(-BS)	[PUHY-P144YJMU-A(-BS) + PUHY-P144YJMU-A(-BS)]
PUHY-P312YSJMU-A(-BS)	[PUHY-P72YJMU-A(-BS) + PUHY-P120YJMU-A(-BS) + PUHY-P120YJMU-A(-BS)]
PUHY-P336YSJMU-A(-BS)	[PUHY-P96YJMU-A(-BS) + PUHY-P120YJMU-A(-BS) + PUHY-P120YJMU-A(-BS)]
PUHY-P360YSJMU-A(-BS)	[PUHY-P96YJMU-A(-BS) + PUHY-P120YJMU-A(-BS) + PUHY-P144YJMU-A(-BS)]

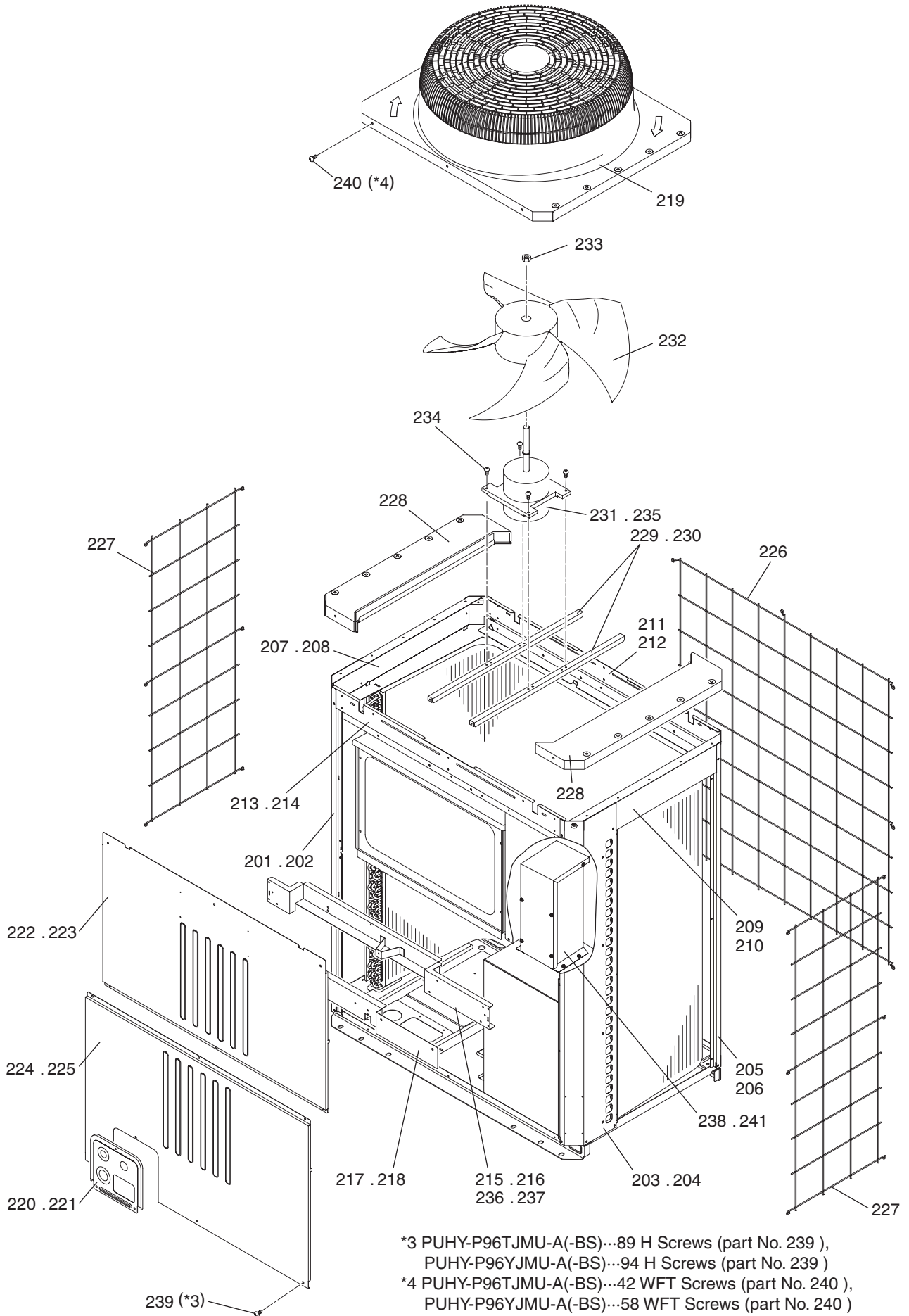


*1 PUHY-P72TJMU-A(-BS)...83 H Screws (part No. 136), PUHY-P72YJMU-A(-BS)...88 H Screws (part No. 136)

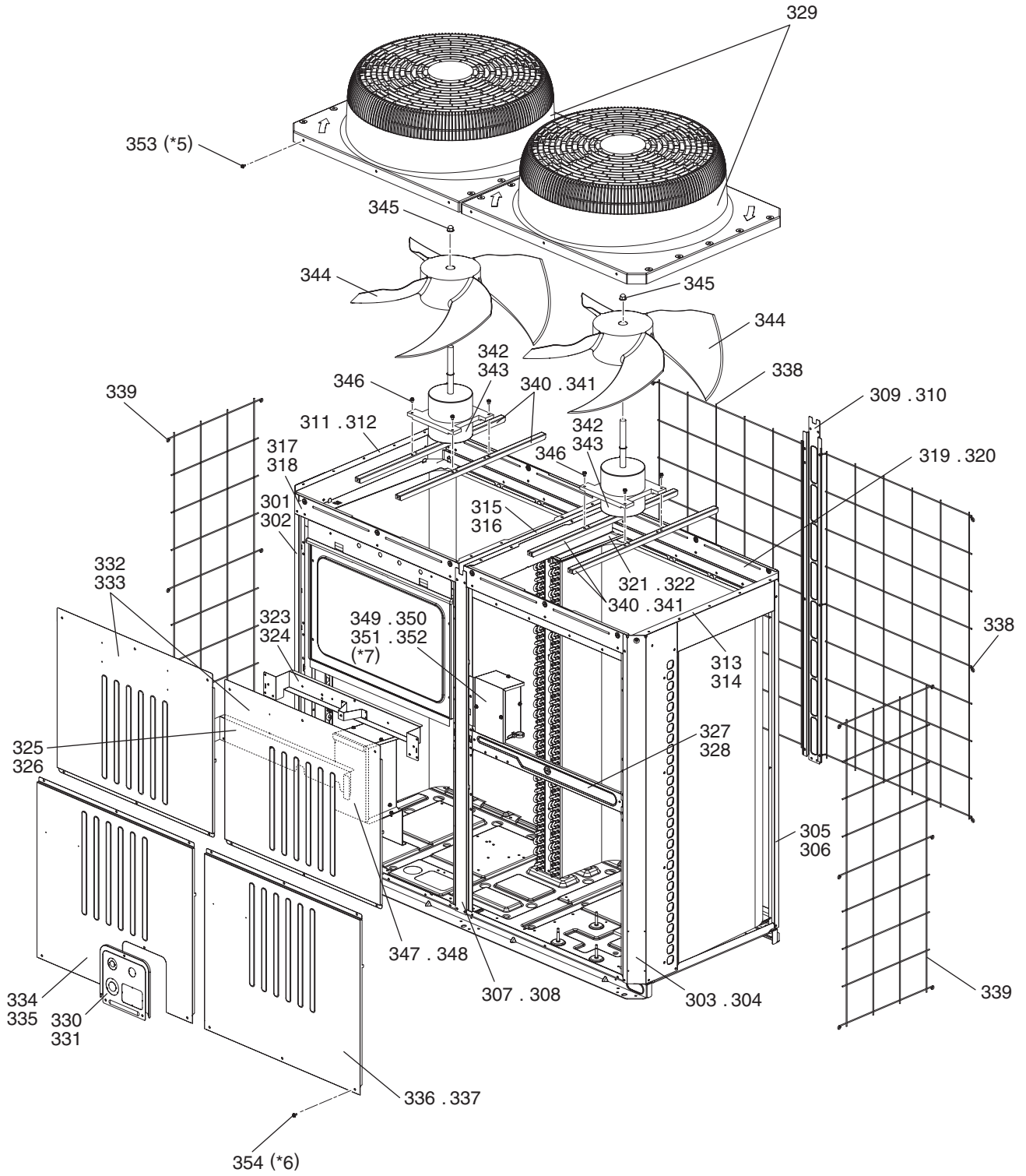
*2 PUHY-P72TJMU-A(-BS)...34 WFT Screws (part No. 137), PUHY-P72YJMU-A(-BS)...50 WFT Screws (part No. 137)

PUHY-P96TJMU-A(-BS)
 PUHY-P96YJMU-A(-BS)

EXTERNAL PARTS & BLOWER PARTS (2)



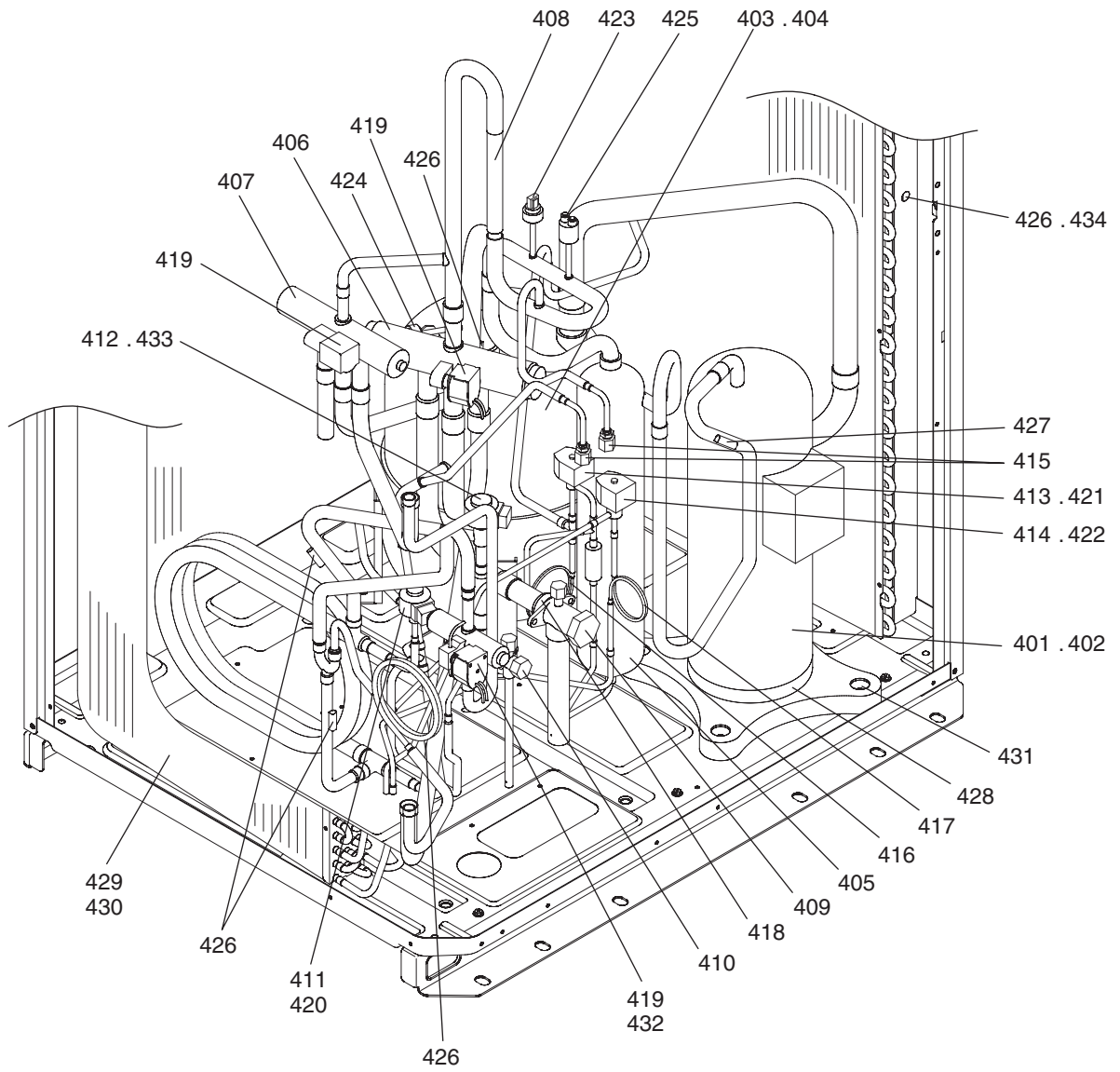
No.	Part No.	G : RoHS Apply Only W : RoHS Apply by Running Change		Spec.	PUHY-P96TJMU-A	PUHY-P96TJMU-A-BS	PUHY-P96YJMU-A	PUHY-P96YJMU-A-BS	Dwg. No.	Notes for the models	Revision info.
		Part Name									
201	R11 019 626	G	Pillar LF		1	1			KB02A011G07		Chg.
202	R11 020 626	G	Pillar LF	BS		1	1		KB02A011G08		Chg.
203	R11 014 626	G	Pillar RF		1	1			KB02A012G07		Chg.
204	R11 015 626	G	Pillar RF	BS		1	1		KB02A012G08		Chg.
205	R63 002 627	G	Pillar B		2	2			KB02A013G07		Chg.
206	R63 003 627	G	Pillar B	BS		2	2		KB02A013G08		Chg.
207	R63 038 162	G	Frame assy L		1	1			KD00G100G01		
208	R63 040 162	G	Frame assy L	BS		1	1		KD00G100G02		
209	R63 039 162	G	Frame assy R		1	1			KD00G101G01		
210	R63 041 162	G	Frame assy R	BS		1	1		KD00G101G02		
211	R63 019 111	G	Frame assy B	18HP	1	1			KB00C464G06		Chg.
212	R63 020 111	G	Frame assy B	18HP BS		1	1		KB00C464G07		Chg.
213	R63 021 111	G	Frame F	18HP	1	1			KB02B093H03		
214	R63 022 111	G	Frame FB	18HP BS		1	1		KB02B093G08		Chg.
215	R61 031 162	G	Frame assy MU	18HP	1				KB00T829G01		
216	R61 033 162	G	Frame assy MU	18HP BS		1			KB00T829G03		
217	R61 006 162	G	Frame assy MB	18HP	1	1			KB00L186G01		
218	R61 008 162	G	Frame assy MB	18HP BS		1	1		KB00L186G07		
219	R63 4H6 118	G	Fan guard		1	1	1	1	KB25A008H07		
220	R61 090 690		Piping cover	THMU	1	1			KB02L911G07		Chg.
221	R61 091 690		Piping cover	THMU BS		1	1		KB02L911G08		Chg.
222	R61 051 651	G	Panel FU	18HP	1	1			KB02B402H02		
223	R63 7H8 651	G	Panel FU	18HP BS		1	1		KB02B402G04		
224	R61 005 652	G	Panel FB	18HP YHM-A	1	1			KB02B403H02		
225	R61 006 652	G	Panel FB	18HP YHM-A BS		1	1		KB02B403G03		
226	R61 003 118	G	Fin guard B	18HP	1	1	1	1	KB07T209G01		
227	R61 007 611	G	Fin guard LR		2	2	2	2	KB07C043G03		
228	R63 7H6 118	G	Fan guard cover		2	2	2	2	KB25B086H03		
229	R63 4H6 140	G	Base fan		2	2			KB02D050H01		
230	R63 4H7 140	G	Base fan	BS		2	2		KB02D050G05		Chg.
231	R61 047 220	W	Motor	TC920IA-UL	1	1			P780112X02		
232	R63 4H6 300	G	Fan		1	1	1	1	KB25A009H04		Chg.
233	R63 4H6 122	G	Box nut	M12 CH	1	1	1	1	P552000X01		
234	R63 014 087	G	Upset Screw	6 x 10	4	4	4	4	P516047X01		
235	R61 060 220	G	Motor	UC920IA			1	1	P780138X02		
236	R61 044 162	G	Frame assy MU	18HP			1		KB00T829G04		
237	R61 045 162	G	Frame assy MU	18HP BS				1	KB00T829G06		
238	R61 024 260		Transformer assy				1		KB00K063G03		
239	R63 007 087	G	H Screw	5 x 10 KNURLED (30pcs)	3	3	4	4	KB00H418G14	*3	
240	R63 006 087	G	WFT Screw	5 x 12 (30pcs)	2	2	2	2	KB00H418G01	*4	
241	R61 025 260		Transformer assy	BS				1	KB00K063G04		

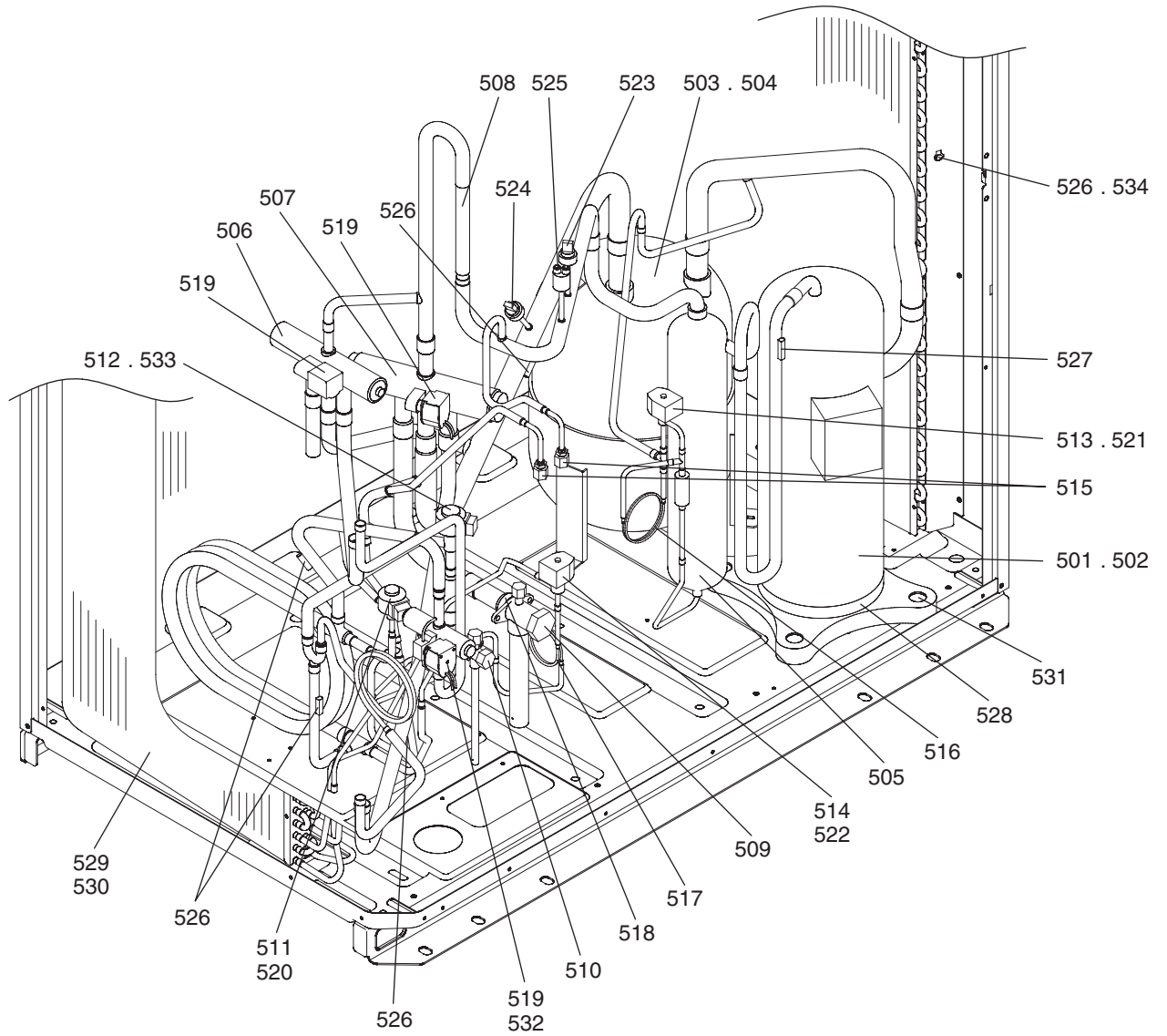


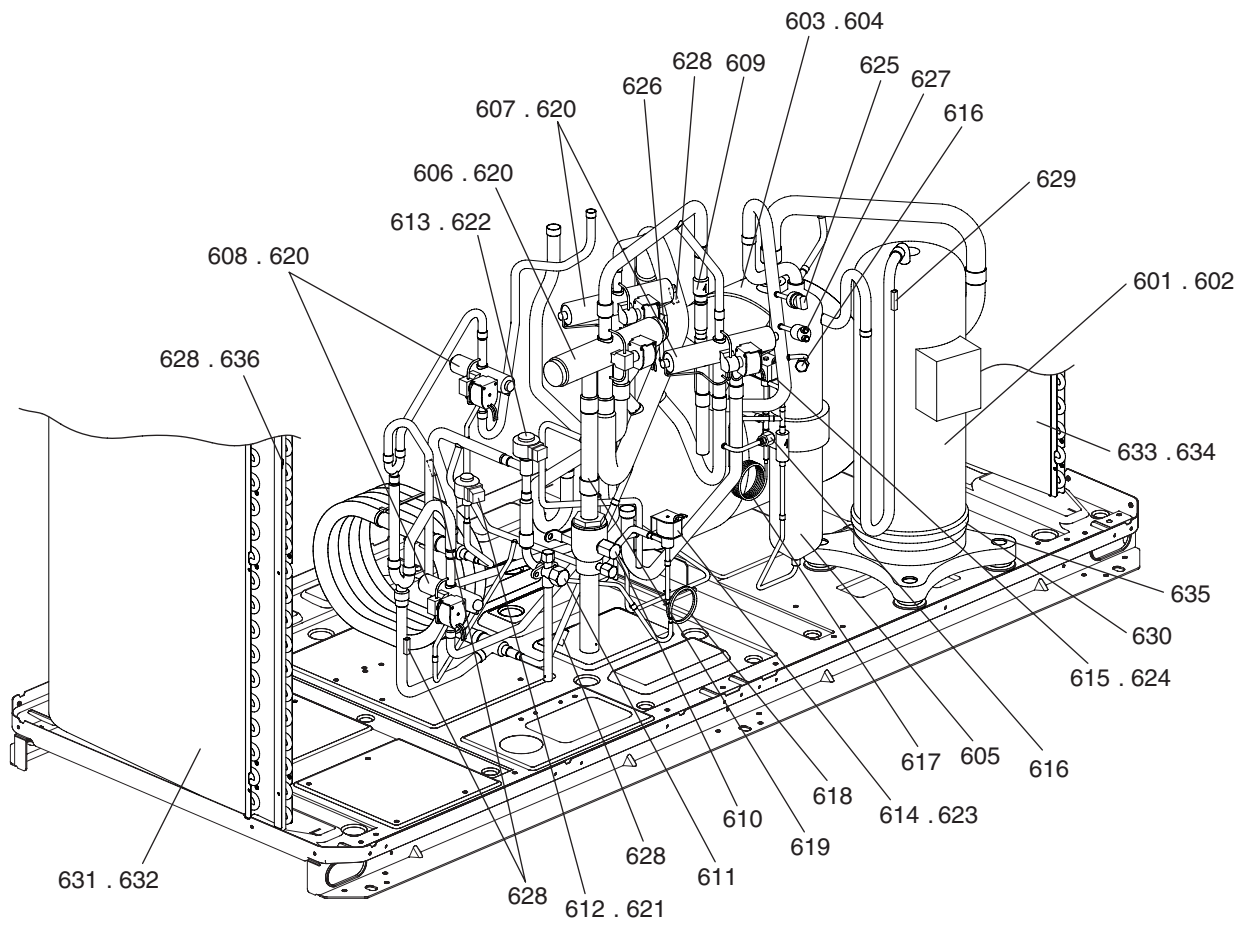
*5 PUHY-P120,P144TJMU-A(-BS)...55 WFT Screws (part No. 353), PUHY-P120,P144YJMU-A(-BS)...71 WFT Screws (part No. 353)
 *6 PUHY-P120,P144TJMU-A(-BS)...138 H Screws (part No. 354), PUHY-P120,P144YJMU-A(-BS)...146 H Screws (part No. 354)
 *7 To ensure proper operation, when problems arise with any parts in the contactor box assy, replace the entire contactor box assy (parts No.349,350,351,or 352), not just individual parts.

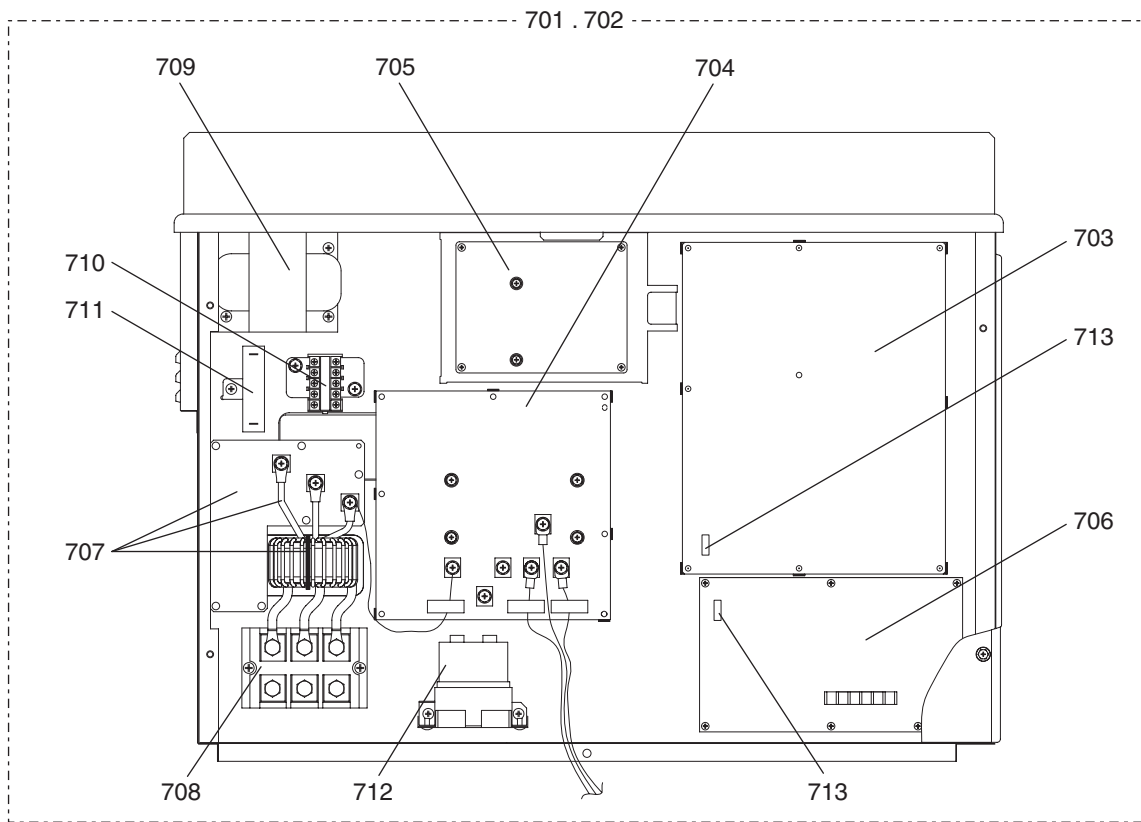
No.	Part No.	G : RoHS Apply Only W : RoHS Apply by Running Change	Part Name	Spec.	PUHY-P120TJMU-A	PUHY-P120YJMU-A-BS	PUHY-P144TJMU-A	PUHY-P144YJMU-A-BS	PUHY-P120YJMU-A	PUHY-P120YJMU-A-BS	Dwg. No.	Notes for the models	Revision info.
301	R61 009 626	G	Pillar LF	XL	1		1		1		KB02A011G09		
302	R61 010 626	G	Pillar LF	XL BS		1		1		1	KB02A011G10		
303	R11 014 626	G	Pillar RF		1		1		1		KB02A012G07		Chg.
304	R11 015 626	G	Pillar RF	BS			1		1		KB02A012G08		Chg.
305	R63 002 627	G	Pillar B		2		2		2		KB02A013G07		Chg.
306	R63 003 627	G	Pillar B	BS			2		2		KB02A013G08		Chg.
307	R61 013 626	G	Pillar assy MF		1		1		1		KD00C356G01		
308	R61 014 626	G	Pillar assy MF	BS			1		1		KD00C356G02		
309	R61 011 626	G	Pillar MB		1		1		1		KB02A263G01		
310	R61 012 626	G	Pillar MB	BS			1		1		KB02A263G02		
311	R63 038 162	G	Frame assy L		1		1		1		KD00G100G01		
312	R63 040 162	G	Frame assy L	BS			1		1		KD00G100G02		
313	R63 039 162	G	Frame assy R		1		1		1		KD00G101G01		
314	R63 041 162	G	Frame assy R	BS			1		1		KD00G101G02		
315	R61 046 162	G	Frame M		1		1		1		KB02J306H01		
316	R61 047 162	G	Frame M	BS			1		1		KB02J306G01		
317	R61 048 162	G	Frame F	XL	1		1		1		KB02A264H01		
318	R61 049 162	G	Frame FB	XL BS			1		1		KB02A264G06		Chg.
319	R61 042 162	G	Frame assy B	XL	1		1		1		KD00C265G05		Chg.
320	R61 043 162	G	Frame assy B	XL BS			1		1		KD00C265G06		Chg.
321	R61 003 499	G	Plate HEX assy	XL	1		1		1		KB00T714G01		
322	R61 004 499	G	Plate HEX assy	XL BS			1		1		KB00T714G02		
323	R63 013 111	G	Frame assy MU		1		1		1		KB00C887G01		
324	R63 014 162	G	Frame assy MU	BS			1		1		KB00C887G07		
325	R63 016 111	G	Frame assy MB		1		1		1		KB00L774G01		
326	R63 015 162	G	Frame assy MB	BS			1		1		KB00L774G07		
327	R61 050 162	G	Frame MR	XL	1		1		1		KB02J307H01		
328	R61 051 162	G	Frame MR	XL BS			1		1		KB02J307G01		
329	R61 004 118	G	Fan guard		2	2	2	2	2	2	KB25A241H03		
330	R61 090 690		Piping cover	THMU	1		1		1		KB02L911G07		Chg.
331	R61 091 690		Piping cover	THMU BS			1		1		KB02L911G08		Chg.
332	R61 050 651	G	Panel FU		2		2		2		KB02B379H02		
333	R63 4H8 651	G	Panel FU	BS			2		2		KB02B379G04		
334	R61 157 651	G	Panel FBL	XL	1		1		1		KB02J308H02		Chg.
335	R61 158 651	G	Panel FBL	XL BS			1		1		KB02J308G04		Chg.
336	R63 159 651	G	Panel FBR	XL	1		1		1		KB02J309H03		Chg.
337	R61 160 651	G	Panel FBR	XL BS			1		1		KB02J309G04		Chg.
338	R63 004 611	G	Fin guard B		2	2	2	2	2	2	KB07T208G01		
339	R61 007 611	G	Fin guard LR		2	2	2	2	2	2	KB07C043G03		
340	R63 4H6 140	G	Base fan		4		4		4		KB02D050H01		
341	R63 4H7 140	G	Base fan	BS			4		4		KB02D050G05		Chg.
342	R61 120 220	G	Motor	EEOK-IOTV 180V	2	2	2	2			P780169X01		
343	R61 121 220	G	Motor	EEOK-IOTV 414V					2	2	P780168X01		
344	R63 4H6 300	G	Fan		2	2	2	2	2	2	KB25A009H04		Chg.
345	R63 4H6 122	G	Box nut	M12 CH	2	2	2	2	2	2	P552000X01		

No.	Part No.	G : RoHS Apply Only W : RoHS Apply by Running Change	Part Name	Spec.	PUHY-P144YJMU-A	PUHY-P144YJMU-A-BS					Dwg. No.	Notes for the models	Revision info.
301	R61 009 626	G	Pillar LF	XL	1						KB02A011G09		
302	R61 010 626	G	Pillar LF	XL BS	1						KB02A011G10		
303	R11 014 626	G	Pillar RF		1						KB02A012G07		Chg.
304	R11 015 626	G	Pillar RF	BS	1						KB02A012G08		Chg.
305	R63 002 627	G	Pillar B		2						KB02A013G07		Chg.
306	R63 003 627	G	Pillar B	BS	2						KB02A013G08		Chg.
307	R61 013 626	G	Pillar assy MF		1						KD00C356G01		
308	R61 014 626	G	Pillar assy MF	BS	1						KD00C356G02		
309	R61 011 626	G	Pillar MB		1						KB02A263G01		
310	R61 012 626	G	Pillar MB	BS	1						KB02A263G02		
311	R63 038 162	G	Frame assy L		1						KD00G100G01		
312	R63 040 162	G	Frame assy L	BS	1						KD00G100G02		
313	R63 039 162	G	Frame assy R		1						KD00G101G01		
314	R63 041 162	G	Frame assy R	BS	1						KD00G101G02		
315	R61 046 162	G	Frame M		1						KB02J306H01		
316	R61 047 162	G	Frame M	BS	1						KB02J306G01		
317	R61 048 162	G	Frame F	XL	1						KB02A264H01		
318	R61 049 162	G	Frame FB	XL BS	1						KB02A264G06		Chg.
319	R61 042 162	G	Frame assy B	XL	1						KD00C265G05		Chg.
320	R61 043 162	G	Frame assy B	XL BS	1						KD00C265G06		Chg.
321	R61 003 499	G	Plate HEX assy	XL	1						KB00T714G01		
322	R61 004 499	G	Plate HEX assy	XL BS	1						KB00T714G02		
323	R63 013 111	G	Frame assy MU		1						KB00C887G01		
324	R63 014 162	G	Frame assy MU	BS	1						KB00C887G07		
325	R63 016 111	G	Frame assy MB		1						KB00L774G01		
326	R63 015 162	G	Frame assy MB	BS	1						KB00L774G07		
327	R61 050 162	G	Frame MR	XL	1						KB02J307H01		
328	R61 051 162	G	Frame MR	XL BS	1						KB02J307G01		
329	R61 004 118	G	Fan guard		2	2					KB25A241H03		
330	R61 090 690		Piping cover	THMU	1						KB02L911G07		Chg.
331	R61 091 690		Piping cover	THMU BS	1						KB02L911G08		Chg.
332	R61 050 651	G	Panel FU		2						KB02B379H02		
333	R63 4H8 651	G	Panel FU	BS	2						KB02B379G04		
334	R61 157 651	G	Panel FBL	XL	1						KB02J308H02		Chg.
335	R61 158 651	G	Panel FBL	XL BS	1						KB02J308G04		Chg.
336	R63 159 651	G	Panel FBR	XL	1						KB02J309H03		Chg.
337	R61 160 651	G	Panel FBR	XL BS	1						KB02J309G04		Chg.
338	R63 004 611	G	Fin guard B		2	2					KB07T208G01		
339	R61 007 611	G	Fin guard LR		2	2					KB07C043G03		
340	R63 4H6 140	G	Base fan		4						KB02D050H01		
341	R63 4H7 140	G	Base fan	BS	4						KB02D050G05		Chg.
342	R61 120 220	G	Motor	EEOK-IOTV 180V							P780169X01		
343	R61 121 220	G	Motor	EEOK-IOTV 414V	2	2					P780168X01		
344	R63 4H6 300	G	Fan		2	2					KB25A009H04		Chg.
345	R63 4H6 122	G	Box nut	M12 CH	2	2					P552000X01		



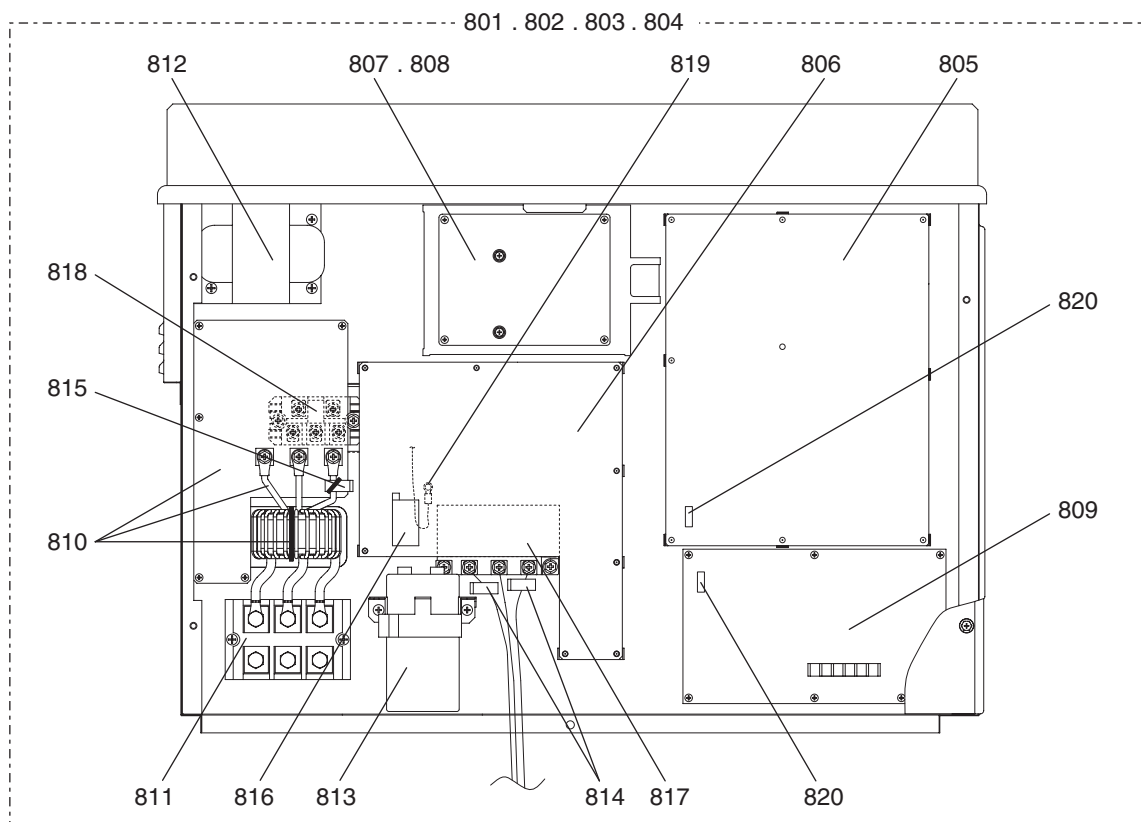


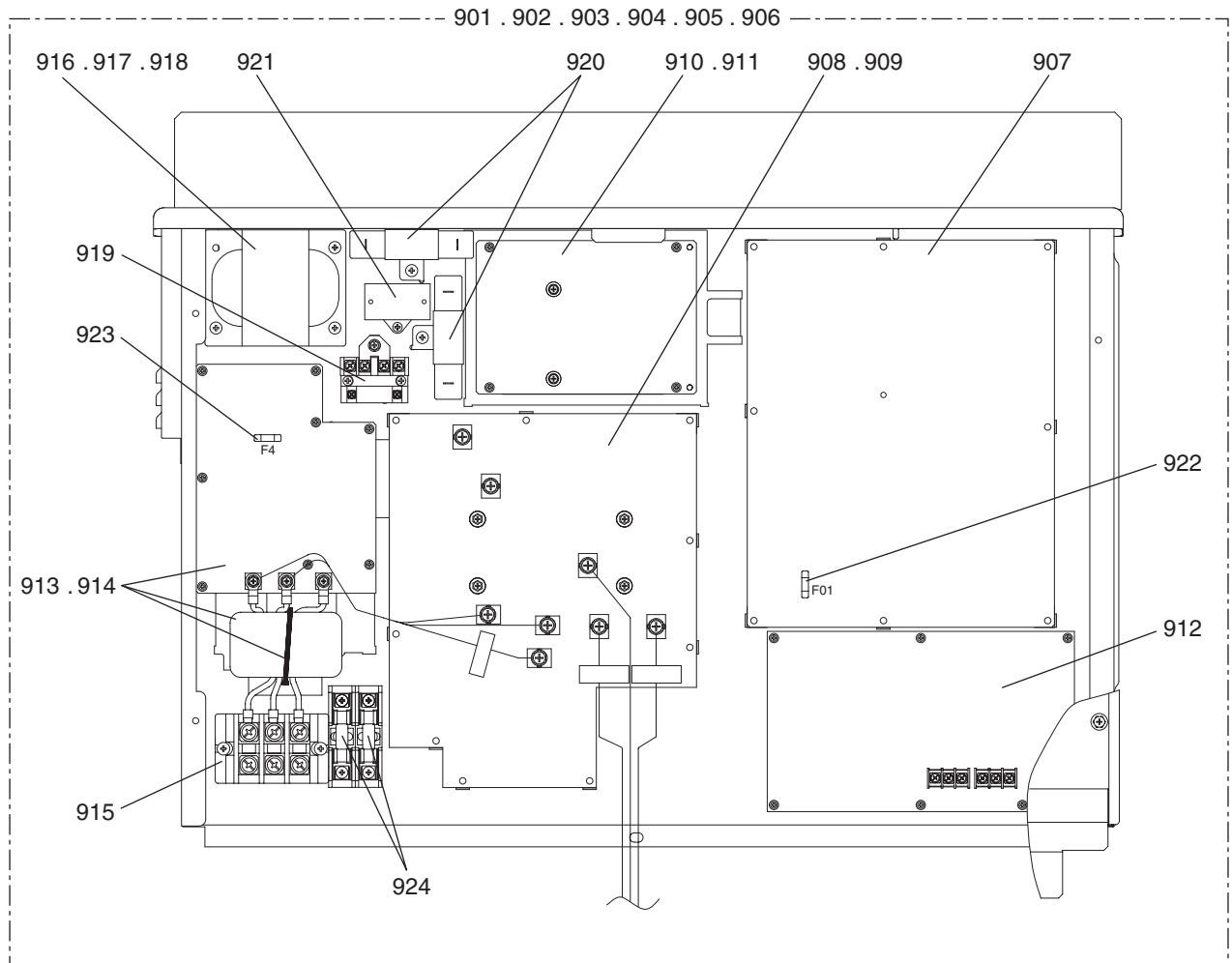




PUHY-P96TJMU-A(-BS)
PUHY-P120TJMU-A(-BS)
PUHY-P144TJMU-A(-BS)

CONTROL BOX PARTS (2)





mitsubishi
MITSUBISHI ELECTRIC CORPORATION

BWE0932C (20151130)