

SERVICE PARTS LIST FOR MITSUBISHI ELECTRIC PACKAGED AIR-CONDITIONERS

Series : PUHY-P·T(S)HMU-A(-BS)
PUHY-P·Y(S)HMU-A(-BS)

For use with the R410A

REVISED

Aug. 2012

BWE0805B

INDEX

PUHY-P72THMU-A(-BS)
PUHY-P96THMU-A(-BS)
PUHY-P120THMU-A(-BS)
PUHY-P72YHMU-A(-BS)
PUHY-P96YHMU-A(-BS)
PUHY-P120YHMU-A(-BS)

Refer to the next page for the package names.

Part information update day : 2012/08/24



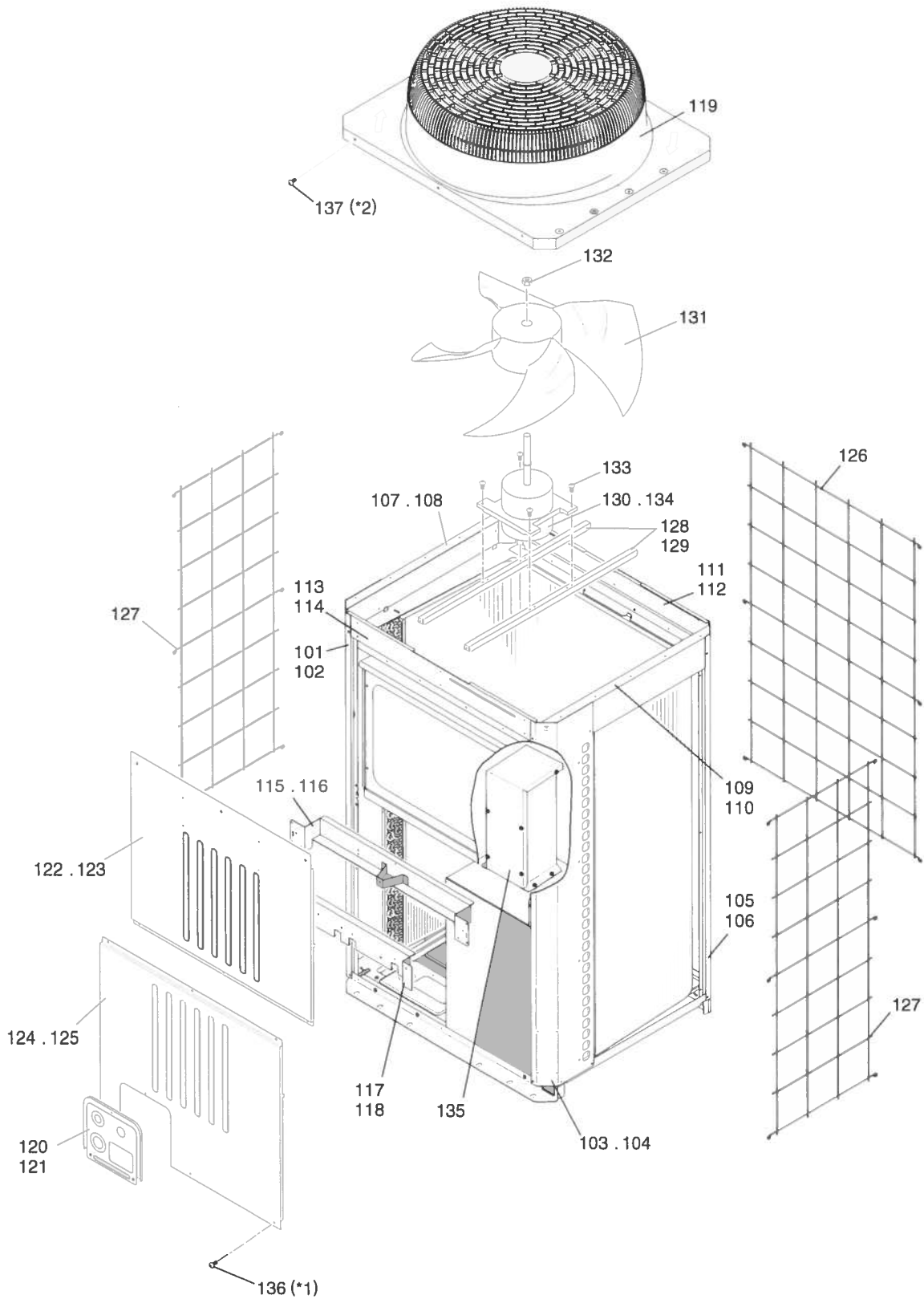
Please change the old catalog (issued Nov. 2010, No.BWE0805A) to this new catalog.
Content of revision : Some of parts are changed.

The Package name list

PUHY-P144TSHMU-A(-BS)	[PUHY-P72THMU-A(-BS) + PUHY-P72THMU-A(-BS)]
PUHY-P168TSHMU-A(-BS)	[PUHY-P72THMU-A(-BS) + PUHY-P96THMU-A(-BS)]
PUHY-P192TSHMU-A(-BS)	[PUHY-P72THMU-A(-BS) + PUHY-P120THMU-A(-BS)]
PUHY-P216TSHMU-A(-BS)	[PUHY-P96THMU-A(-BS) + PUHY-P120THMU-A(-BS)]
PUHY-P240TSHMU-A(-BS)	[PUHY-P120THMU-A(-BS) + PUHY-P120THMU-A(-BS)]
PUHY-P264TSHMU-A(-BS)	[PUHY-P72THMU-A(-BS) + PUHY-P72THMU-A(-BS) + PUHY-P120THMU-A(-BS)]
PUHY-P288TSHMU-A(-BS)	[PUHY-P72THMU-A(-BS) + PUHY-P96THMU-A(-BS) + PUHY-P120THMU-A(-BS)]
PUHY-P312TSHMU-A(-BS)	[PUHY-P72THMU-A(-BS) + PUHY-P120THMU-A(-BS) + PUHY-P120THMU-A(-BS)]
PUHY-P336TSHMU-A(-BS)	[PUHY-P96THMU-A(-BS) + PUHY-P120THMU-A(-BS) + PUHY-P120THMU-A(-BS)]
PUHY-P360TSHMU-A(-BS)	[PUHY-P120THMU-A(-BS) + PUHY-P120THMU-A(-BS) + PUHY-P120THMU-A(-BS)]
PUHY-P144YSHMU-A(-BS)	[PUHY-P72YHMU-A(-BS) + PUHY-P72YHMU-A(-BS)]
PUHY-P168YSHMU-A(-BS)	[PUHY-P72YHMU-A(-BS) + PUHY-P96YHMU-A(-BS)]
PUHY-P192YSHMU-A(-BS)	[PUHY-P72YHMU-A(-BS) + PUHY-P120YHMU-A(-BS)]
PUHY-P216YSHMU-A(-BS)	[PUHY-P96YHMU-A(-BS) + PUHY-P120YHMU-A(-BS)]
PUHY-P240YSHMU-A(-BS)	[PUHY-P120YHMU-A(-BS) + PUHY-P120YHMU-A(-BS)]
PUHY-P264YSHMU-A(-BS)	[PUHY-P72YHMU-A(-BS) + PUHY-P72YHMU-A(-BS) + PUHY-P120YHMU-A(-BS)]
PUHY-P288YSHMU-A(-BS)	[PUHY-P72YHMU-A(-BS) + PUHY-P96YHMU-A(-BS) + PUHY-P120YHMU-A(-BS)]
PUHY-P312YSHMU-A(-BS)	[PUHY-P72YHMU-A(-BS) + PUHY-P120YHMU-A(-BS) + PUHY-P120YHMU-A(-BS)]
PUHY-P336YSHMU-A(-BS)	[PUHY-P96YHMU-A(-BS) + PUHY-P120YHMU-A(-BS) + PUHY-P120YHMU-A(-BS)]
PUHY-P360YSHMU-A(-BS)	[PUHY-P120YHMU-A(-BS) + PUHY-P120YHMU-A(-BS) + PUHY-P120YHMU-A(-BS)]

PUHY-P72,P96THMU-A (-BS)
 PUHY-P72,P96YHMU-A (-BS)

EXTERNAL PARTS & BLOWER PARTS (1)



*1 PUHY-P72,P96THMU-A(-BS)...92 H Screws (part No. 136), PUHY-P72,P96YHMU-A(-BS)...97 H Screws (part No. 136)
 *2 PUHY-P72,P96THMU-A(-BS)...34 WFT Screws (part No. 137), PUHY-P72,P96YHMU-A(-BS)...40 WFT Screws (part No. 137)

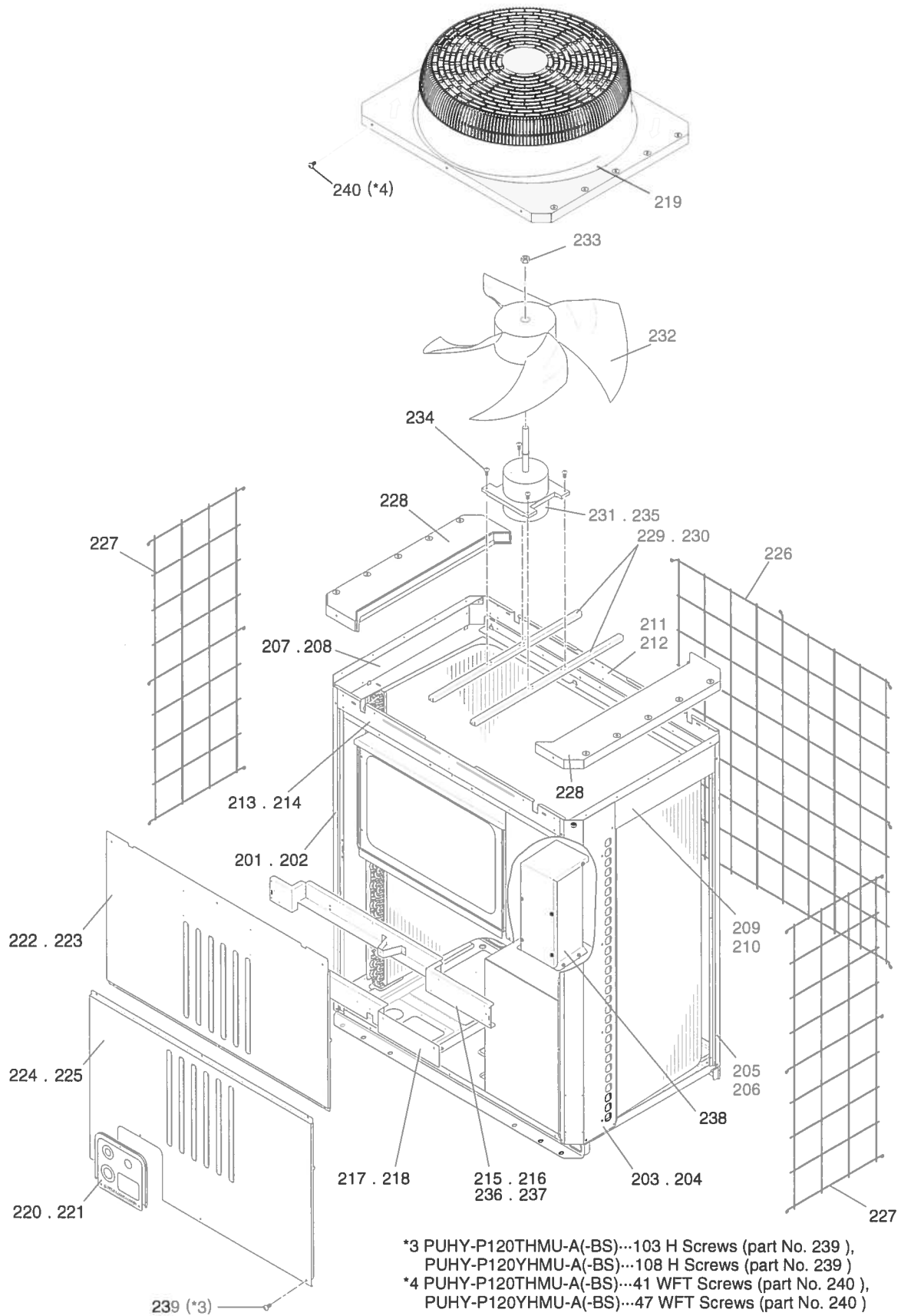
PUHY-P72,P96THMU-A (-BS)
 PUHY-P72,P96YHMU-A (-BS)

EXTERNAL PARTS & BLOWER PARTS (1)

No.	Part No.	G : RoHS Apply Only W : RoHS Apply by Running Change		Spec.	PUHY-P72THMU-A	PUHY-P72THMU-A-BS	PUHY-P96THMU-A	PUHY-P96THMU-A-BS	PUHY-P72YHMU-A	PUHY-P72YHMU-A-BS	Dwg. No.	Notes for the models	Revision info.
		Part Name											
101	R63 001 626	G		Pillar LF	1		1		1		KB02A011G05		
102	R63 002 626	G		Pillar LF		1	1		1		KB02A011G06		
103	R63 003 626	G		Pillar RF	1		1		1		KB02A012G05		
104	R63 004 626	G		Pillar RF		1	1		1		KB02A012G06		
105	R63 005 626	G		Pillar B	2		2		2		KB02A013G05		
106	R63 006 626	G		Pillar B		2	2		2		KB02A013G06		
107	R63 005 111	G		Frame assy L	1		1		1		KB00C163G05		
108	R63 006 111	G		Frame assy L		1	1		1		KB00C163G06		
109	R61 036 162	G		Frame assy R	1		1		1		KB00C164G07		Chg.
110	R63 008 111	G		Frame assy R		1	1		1		KB00C164G06		
111	R63 009 111	G		Frame assy B	1		1		1		KB00C162G05		
112	R63 010 111	G		Frame assy B		1	1		1		KB00C162G06		
113	R63 004 668	G		Frame F	1		1		1		KB02J208H01		
114	R63 012 111	G		Frame FB		1	1		1		KB02B021G06		
115	R63 013 111	G		Frame assy MU	1		1		1		KB00C887G01		
116	R63 015 111	G		Frame assy MU		1	1		1		KB00C887G03		
117	R63 016 111	G		Frame assy MB	1		1		1		KB00L774G01		
118	R63 018 111	G		Frame assy MB		1	1		1		KB00L774G03		
119	R63 4H6 118	G		Fan guard	1	1	1	1	1	1	KB25A008H07		Chg.
120	R61 003 697	G		Piping cover	1		1		1		KB02L911G01		
121	R61 004 697	G		Piping cover		1	1		1		KB02L911G02		
122	R61 050 651	G		Panel FU	1		1		1		KB02B379H02		Chg.
123	R63 4H8 651	G		Panel FU		1	1		1		KB02B379G04		Chg.
124	R61 003 652	G		Panel FB	1		1		1		KB02B392H02		
125	R61 004 652	G		Panel FB		1	1		1		KB02B392G03		
126	R63 004 611	G		Fin guard B	1	1	1	1	1	1	KB07T208G01		
127	R61 007 611	G		Fin guard LR	2	2	2	2	2	2	KB07C043G03		
128	R63 4H6 140	G		Base fan	2		2		2		KB02D050H01		
129	R63 4H7 140	G		Base fan		2	2		2		KB02D050G01		
130	R61 047 220	W		Motor	1	1	1	1			P780112X02		
131	R63 4H6 300	G		Fan	1	1	1	1	1	1	KB25A009H03		Chg.
132	R63 4H6 122	G		Box nut	1	1	1	1	1	1	P552000X01		
133	R63 014 087	G		Upset Screw	4	4	4	4	4	4	P516047X01		
134	R61 060 220	G		Motor					1	1	P780138X02		
135	R61 018 260			Transformer assy					1	1	KB00K063G02		
136	R63 007 087	G		H Screw	5	4	4	4	4	4	KB00H418G14	*1	
137	R63 006 087	G		WFT Screw	5	2	2	2	2	2	KB00H418G01	*2	

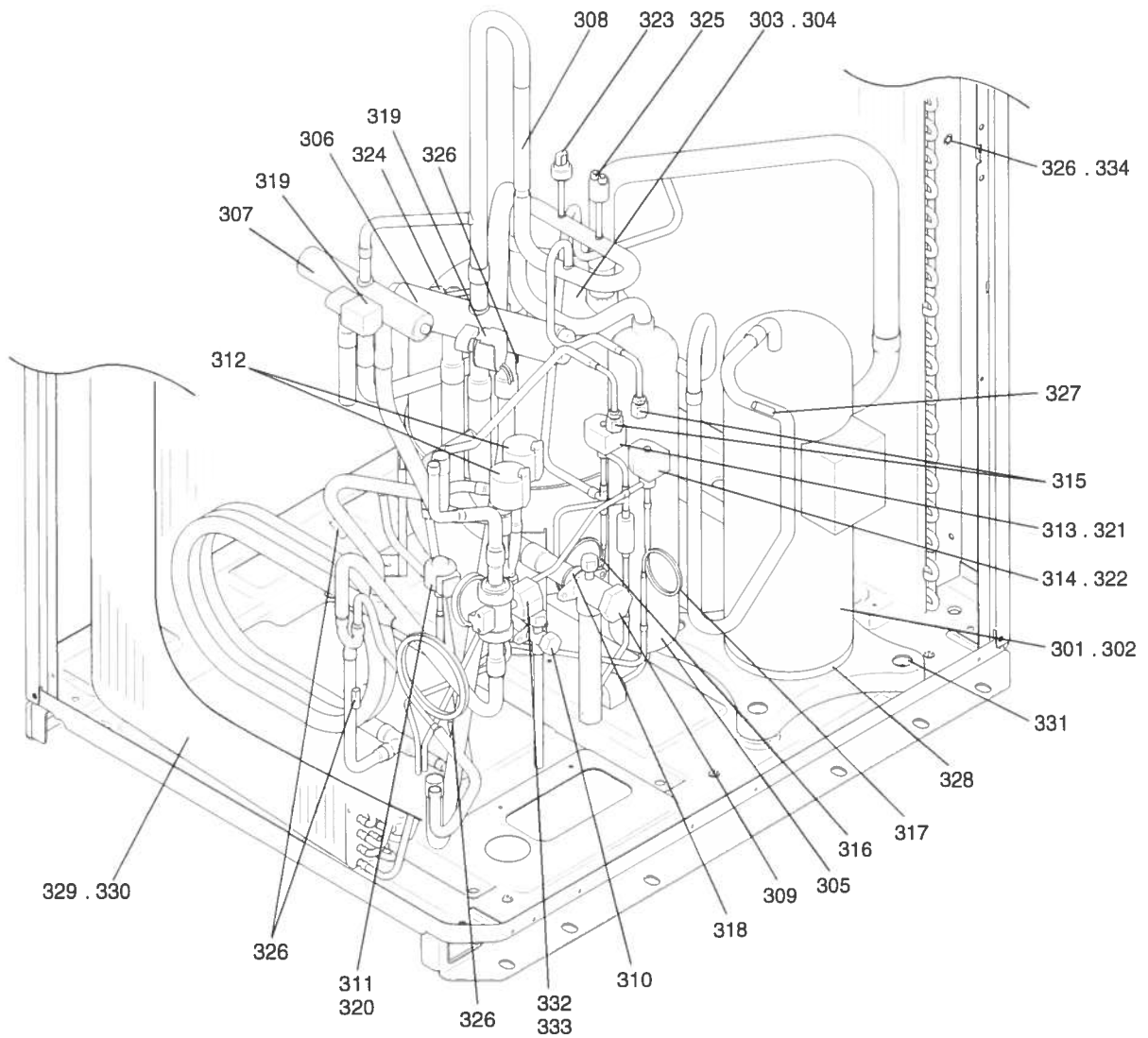
PUHY-P120THMU-A (-BS)
 PUHY-P120YHMU-A (-BS)

EXTERNAL PARTS & BLOWER PARTS (2)



PUHY-P72,P96THMU-A (-BS)
PUHY-P72,P96YHMU-A (-BS)

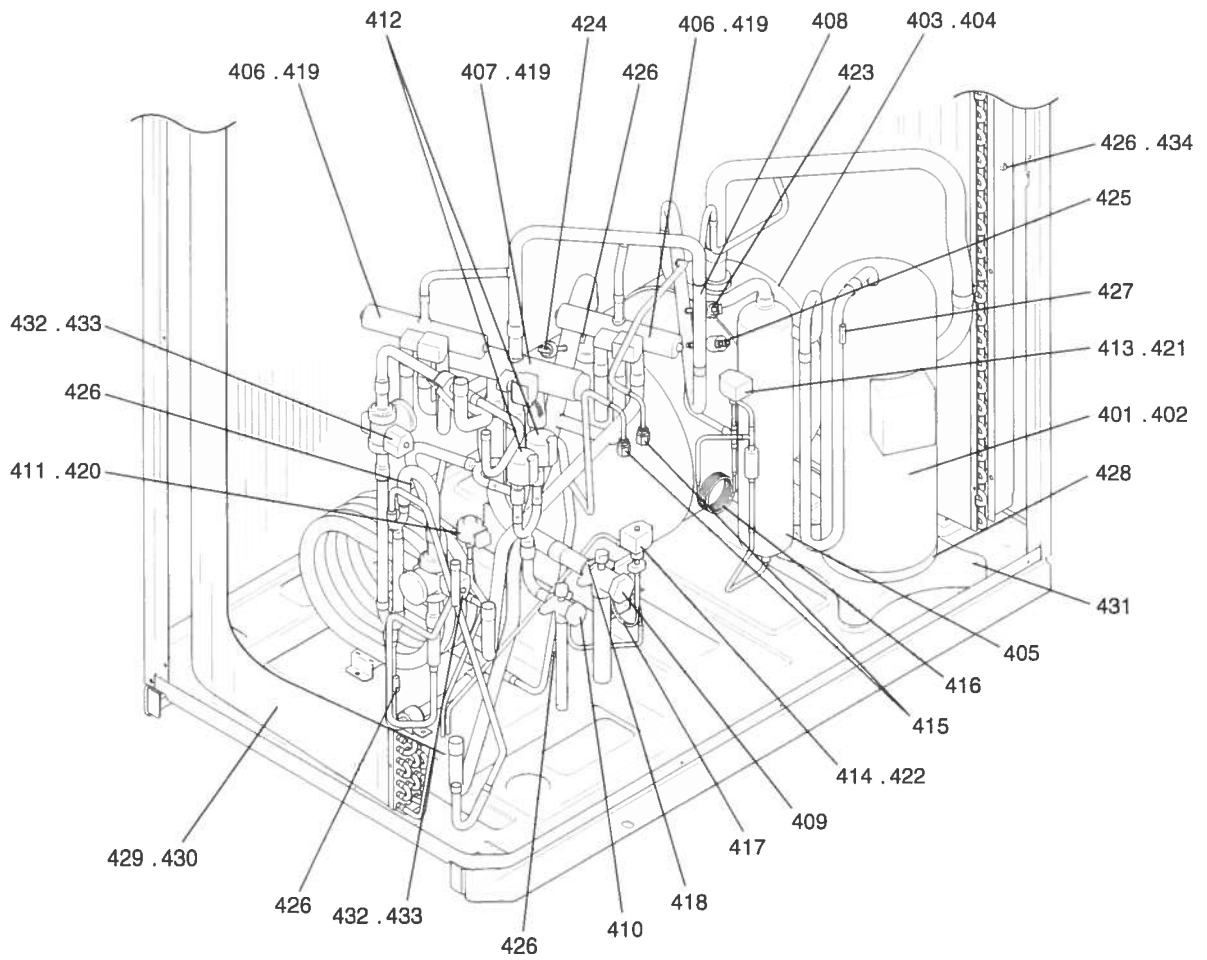
FUNCTIONAL PARTS (1)



PUHY-P72,P96THMU-A (-BS)
 PUHY-P72,P96YHMU-A (-BS)

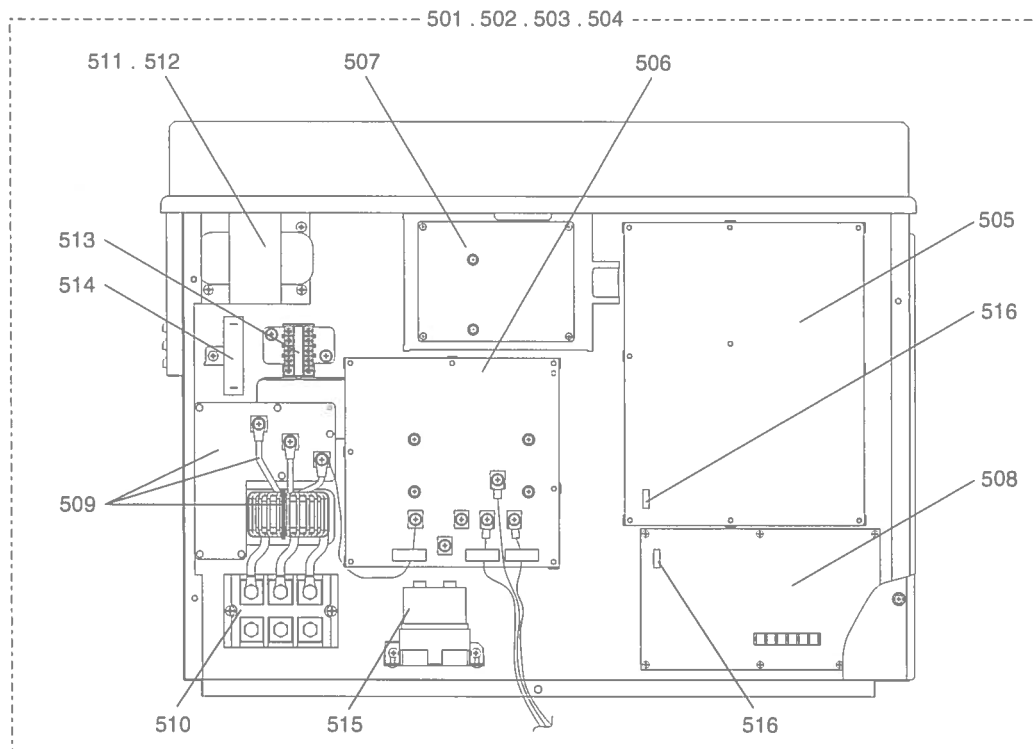
FUNCTIONAL PARTS (1)

No.	Part No.	G : RoHS Apply Only W : RoHS Apply by Running Change		Spec.	PUHY-P72THMU-A	PUHY-P72THMU-A-BS	PUHY-P96THMU-A	PUHY-P96THMU-A-BS	PUHY-P72YHMU-A	PUHY-P72YHMU-A-BS	Dwg. No.	Notes for the models	Revision info.
			Part Name										
301	R69 047 478	W	Scroll compressor	ENB52FA-U	1	1	1	1			EP10107B06		
302	R69 023 478	G	Scroll compressor	ENB52FA-YE					1	1	EP10107B03		
303	R61 006 484	G	Accumulator assy		1		1		1		KB54B477G05		
304	R61 007 484	G	Accumulator assy	BS		1		1		1	KB54B477G06		
305	R61 005 487	G	Oil separator assy		1	1	1	1	1	1	KB00G667G01		
306	R63 Y05 154	G	Four way valve	STF-07	1	1	1	1	1	1	P633119X01	<21S4a>	
307	R63 R55 154	G	Four way valve	STF04	1	1	1	1	1	1	P633118X01	<21S4b>	
308	R63 R43 418	G	Check valve	BCV-1005	1	1	1	1	1	1	P639165X01		
309	R61 002 540	G	Valve	VSAMH8SSCM-A	1	1	1	1	1	1	P636343X01	<BV1>	
310	R61 003 540	G	Valve	VSAMH3SSCM-LA1	1	1	1	1	1	1	P636346X01	<BV2>	
311	R63 4H6 401	G	Linear expansion valve	CAM35-S	1	1	1	1	1	1	P632444X01	<LEV1>	
312	R61 015 401	G	Linear expansion valve	EFM-A 1700XA	2	2	2	2	2	2	P632461X01	<LEV2a,LEV2b>	
313	R61 034 232	G	Solenoid valve	VPV U	1	1	1	1	1	1	P631294X01	<SV1a>	
314	R63 Y07 232	G	Solenoid valve	ATS-A	1	1	1	1	1	1	P631291X01	<SV9>	
315	R63 R34 413	G	Check joint L	R410A	2	2	2	2	2	2	P666004X02	<(HP) CJ1,(LP) CJ2>	
316	R63 002 425	G	Capillary tube assy		1	1	1	1	1	1	KB49F229G01	<CP1>	
317	R61 003 425	G	Capillary tube assy		1	1	1	1	1	1	KB49F761G01	<CP2>	
318	R61 008 454	G	Strainer	25.4D	1	1	1	1	1	1	KB48K250G01	<ST1>	
319	R61 Y21 243	W	Four way valve coil	STF-01	2	2	2	2	2	2	P472028X01	<21S4a,21S4b>	
320	R63 011 401	G	Linear expansion valve coil	CAM	1	1	1	1	1	1	P472059X02	<LEV1>	
321	R61 011 243	G	Solenoid valve coil	VPV UL	1	1	1	1	1	1	P472047X01	<SV1a>	
322	R63 6A7 243	W	Solenoid valve coil		1	1	1	1	1	1	P472010X01	<SV9>	Chg.
323	R61 006 288	G	Pressure sensor	HP D173	1	1	1	1	1	1	KB00H904G09	<(HP) 63HS1>	
324	R61 007 288	G	Pressure sensor	LP D173	1	1	1	1	1	1	KB00H904G10	<(LP) 63LS>	
325	R63 Y11 208	G	Pressure switch	ACB1UB28W	1	1	1	1	1	1	P426320X01	<63H1>	
326	R61 060 200	G	Thermistor	Chip TH 15kΩ	5	5	5	5	5	5	P418065X01	<TH2,TH3,TH5-7>	
327	R63 911 202	G	Thermistor		1	1	1	1	1	1	P425416X02	<TH4>	
328	R61 003 236	G	Crank case heater	230V 51W	1	1	1	1	1	1	P497068X01	<CH11>	
329	R61 097 480	G	Heat exchanger assy	3L YHM	1				1		KB01G562G01		
330	R61 100 480	G	Heat exchanger assy	3L BS		1				1	KB01G562G02		
331	R63 852 860	G	Rubber mount	For compressor	4	4	4	4	4	4	W897574H01		
332	R63 P89 232	G	Solenoid valve	SR6PF-06WR	1	1	1	1	1	1	P631278X01	<SV5b>	
333	R61 005 243	W	Solenoid valve coil	SR66PF	1	1	1	1	1	1	P472044X02	<SV5b>	
334	R61 001 310	G	Sensor holder		1	1	1	1	1	1	KB25B471H03		Chg.



PUHY-P72THMU-A (-BS)
PUHY-P96THMU-A (-BS)

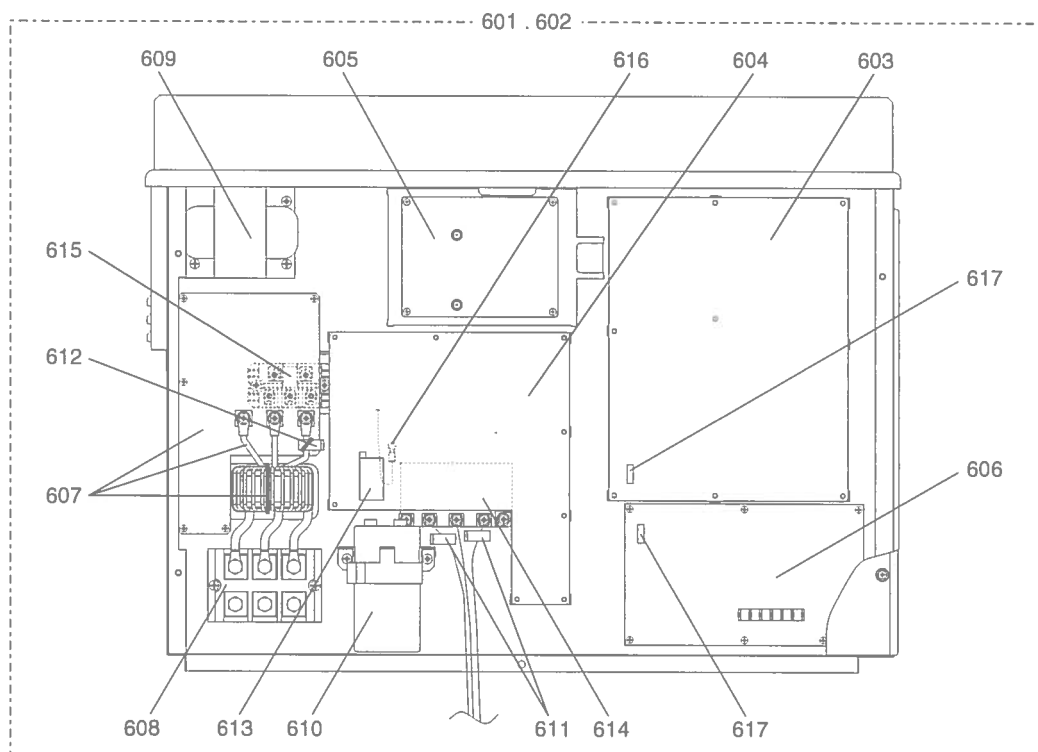
CONTROL BOX PARTS (1)

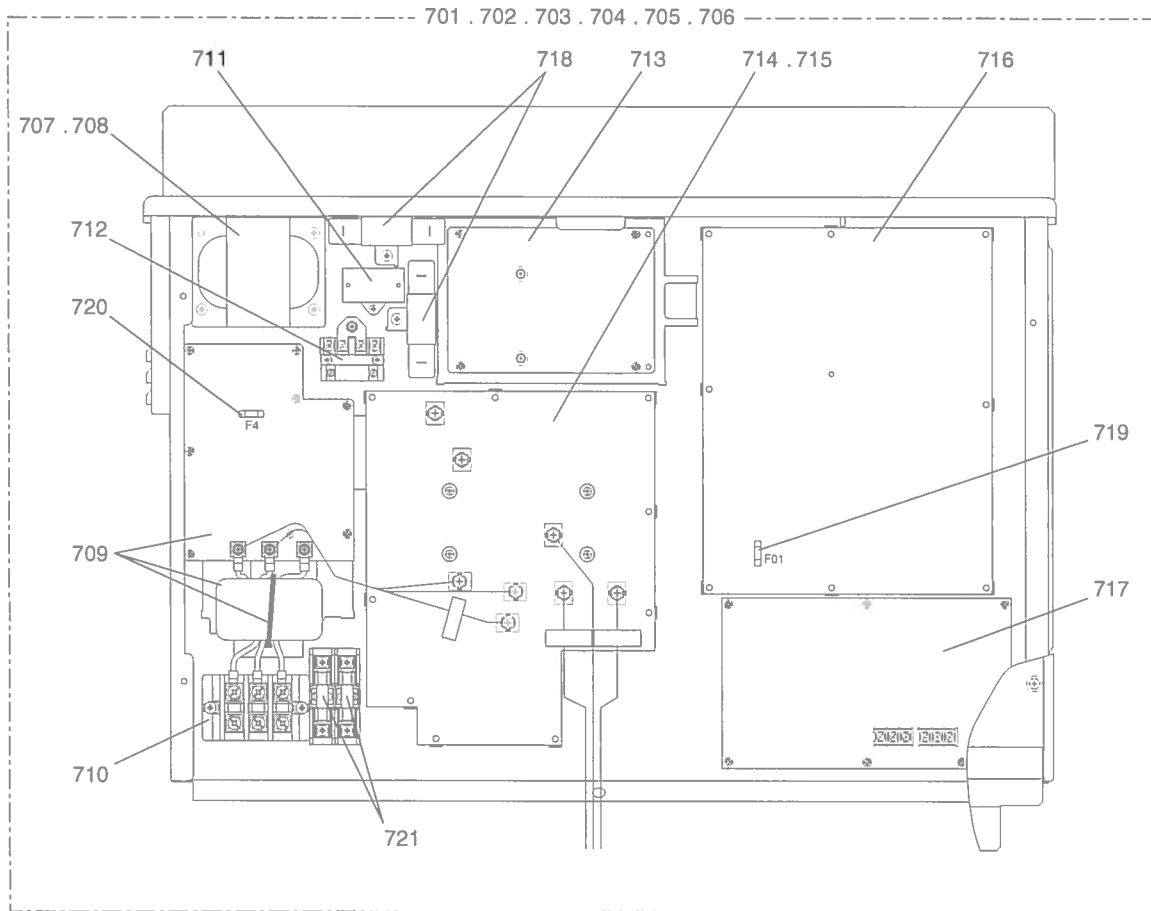


PUHY-P72THMU-A (-BS)
 PUHY-P96THMU-A (-BS)

CONTROL BOX PARTS (1)

No.	Part No.	G : RoHS Apply Only W : RoHS Apply by Running Change		Spec.	PUHY-P72THMU-A	PUHY-P72THMU-A-BS	PUHY-P96THMU-A	PUHY-P96THMU-A-BS	Dwg. No.	Notes for the models	Revision info.
		Part Name									
501	R61 107 305			P72THMU	1				KE80C205G13		
502	R61 108 305			P72BS		1			KE80C205G14		
503	R61 109 305			P96THMU			1		KE80C205G15		
504	R61 110 305			P96BS				1	KE80C205G16		
505	R61 020 281				1	1	1	1	KE80C153G13		
506	R61 018 280	W		INV board	1	1	1	1	W647875G09		
507	R61 5H4 280			Fan board	1	1	1	1	W652171G06		
508	R61 051 280	G		M-NET board	1	1	1	1	KE80C055G04		
509	R61 4H6 293	W		Noise filter	1	1	1	1	KE80C054G01		
				board,coil,band							
510	R61 N22 246	W		Terminal block	1	1	1	1	S436005H02	<TB1>	
511	R61 003 259	W		Reactor	1	1			P715431X02	<DCL>	
512	R61 007 259	W		Reactor			1	1	P715432X03	<DCL>	Chg.
513	R61 G95 215	W		Magnetic relay	1	1	1	1	S421003H20	<72C>	
514	R63 670 234	G		Resistor	1	1	1	1	P411113X01	<R1>	
515	R61 4H6 256	W		Capacitor	1	1	1	1	P412312X01	<C1>	
516	R63 992 964	G		Fuse	2	2	2	2	S423001H29		
				3.15A AC250V T							





mitsubishi electric corporation
HEAD OFFICE: TOKYO BLDG., 2-7-3, MARUNOUCHI, CHIYODA-KU, TOKYO 100-8310, JAPAN

BWE0805B (20120831)