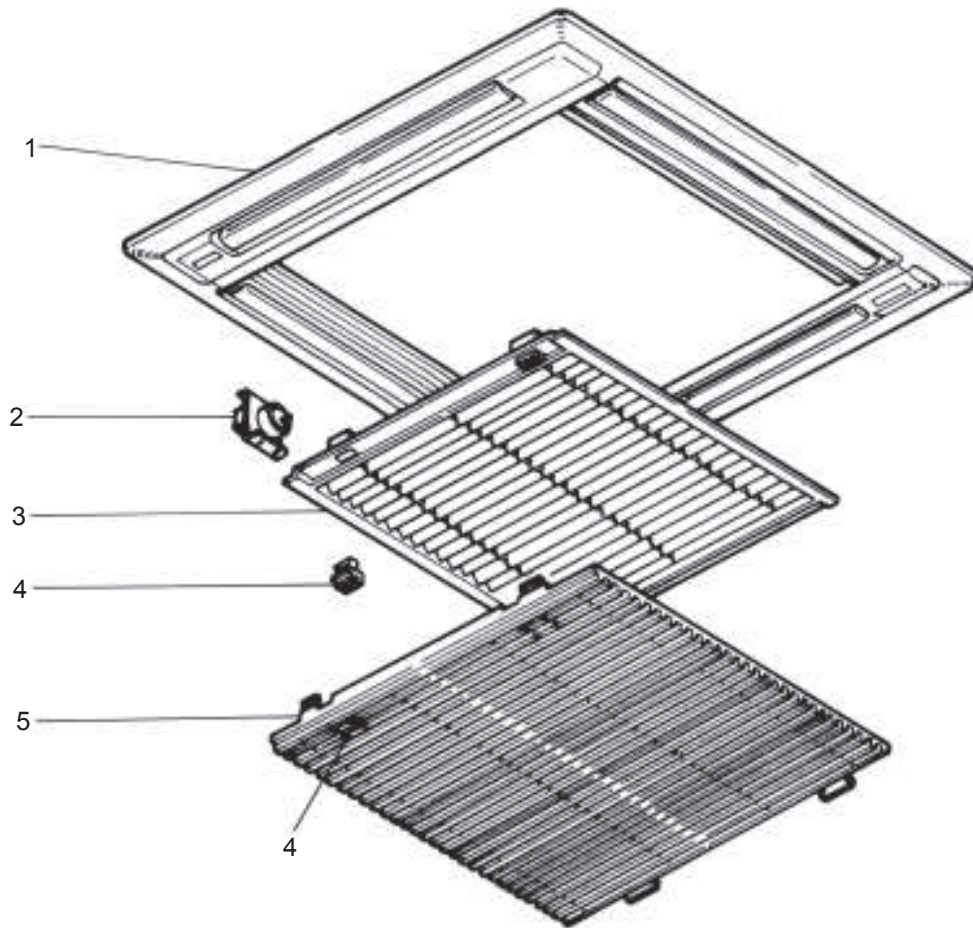


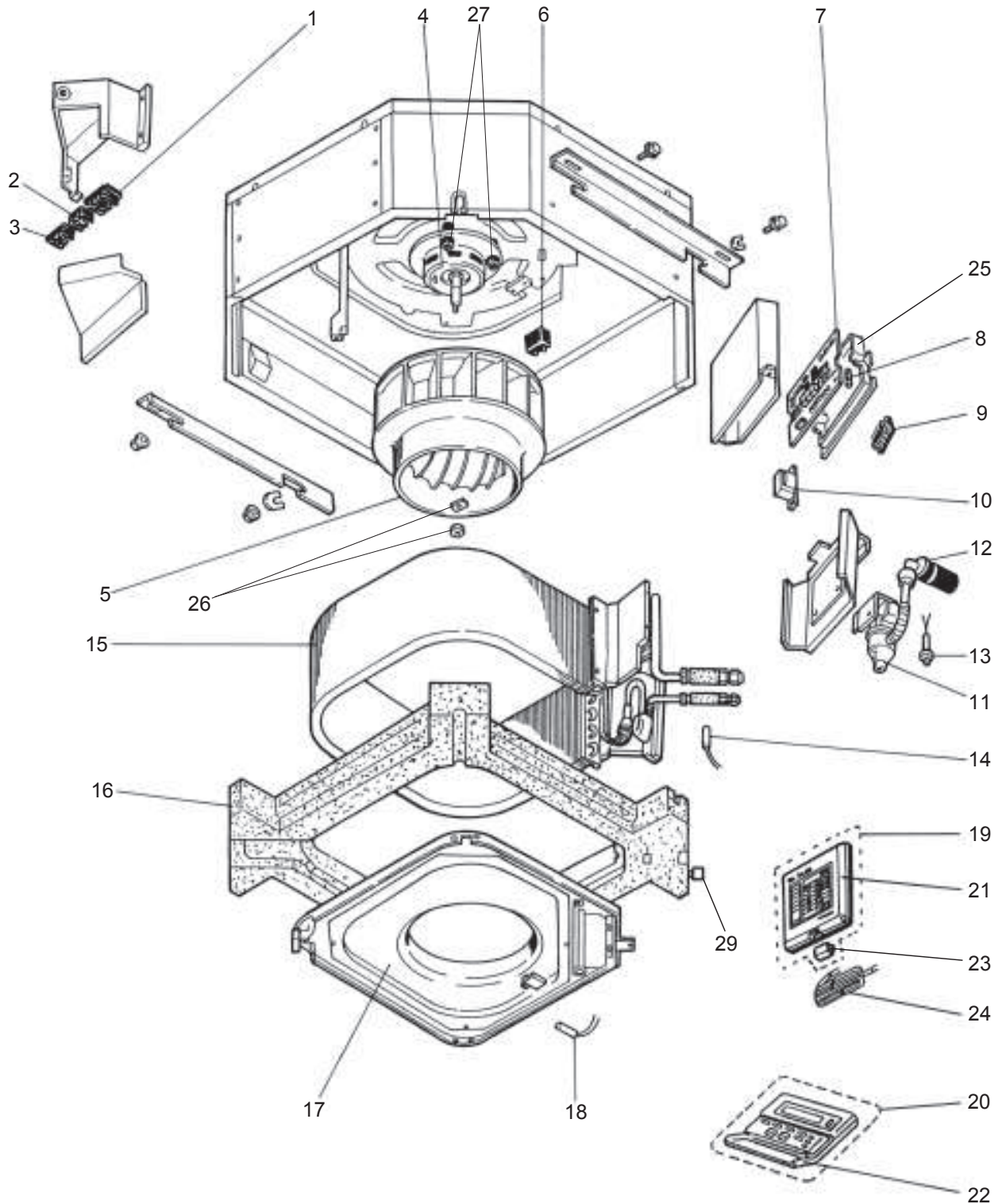
PL12FK, PL18FK2, PL24FK2 PANEL PARTS
 PL12FK1, PL18FK21, PL24FK21



Part number that is circled is not shown in the figure.

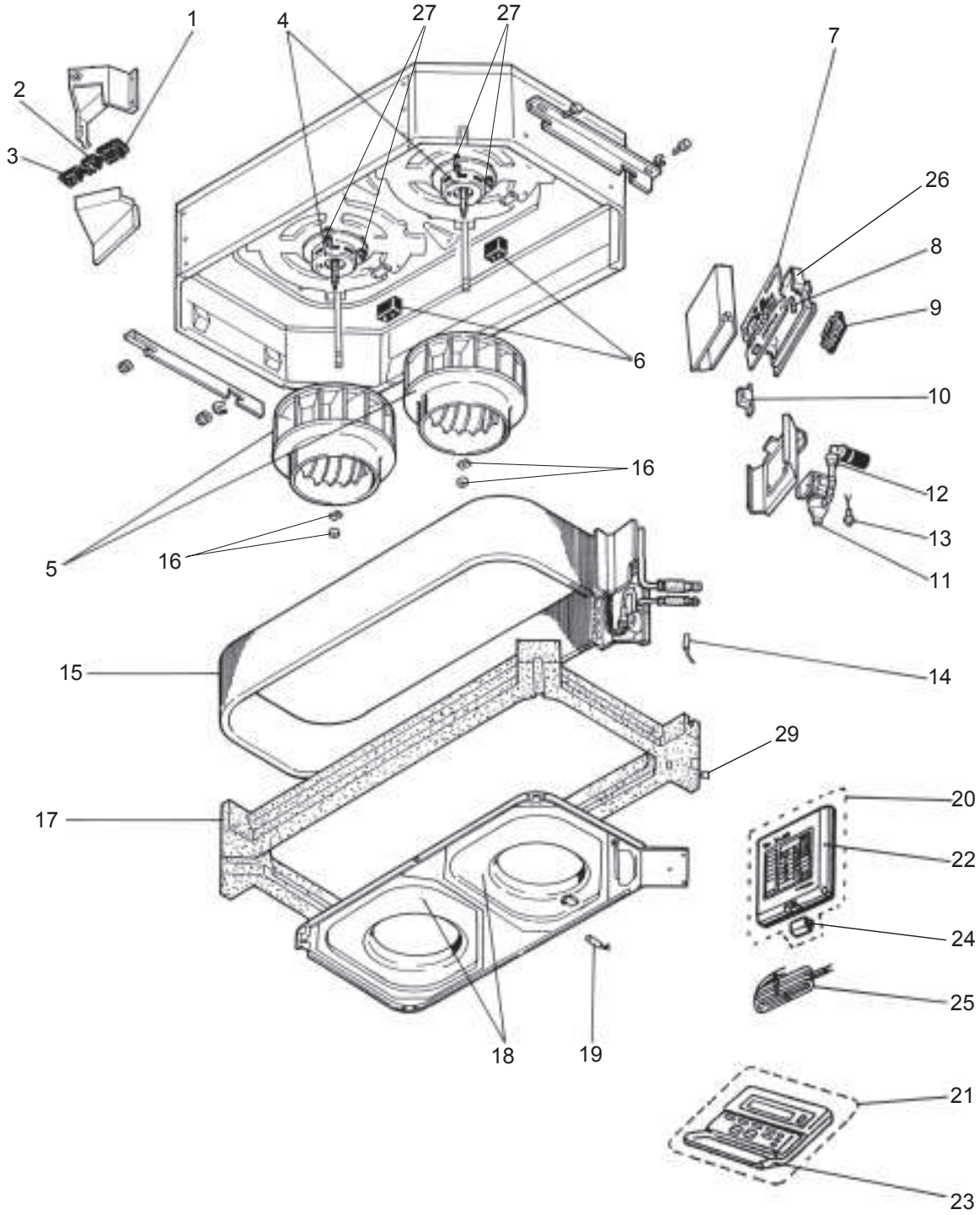
No.	Parts No.	Parts Name	Specifications Drawing No.	Q'ty/set						Remarks	Circuit Diagram Symbol	Recommended Q'ty	Price	
				PL									Unit	Amount
				12	18	24	FK	FK1	FK2					
1	T7W 410 003	AIR OUTLET GRILL	INDOOR PANEL	1	1	1	1	1	1					
2	T7W 410 223	VANE MOTOR		1	1	1	1	1	1	MV				
3	R01 K01 500	AIR FILTER		1	1	1	1	1	1					
4	R01 K01 054	CATCH		4	4	4	4	4	4					
5	R01 K01 691	INTAKE GRILL		1	1	1	1	1	1					
⑥	T7W 411 239	FUSE	250V 0.5A	1	1	1	1	1	1	F2				

PL12FK, PL18FK2, PL24FK2 FUNCTIONAL PARTS
PL12FK1, PL18FK21, PL24FK21





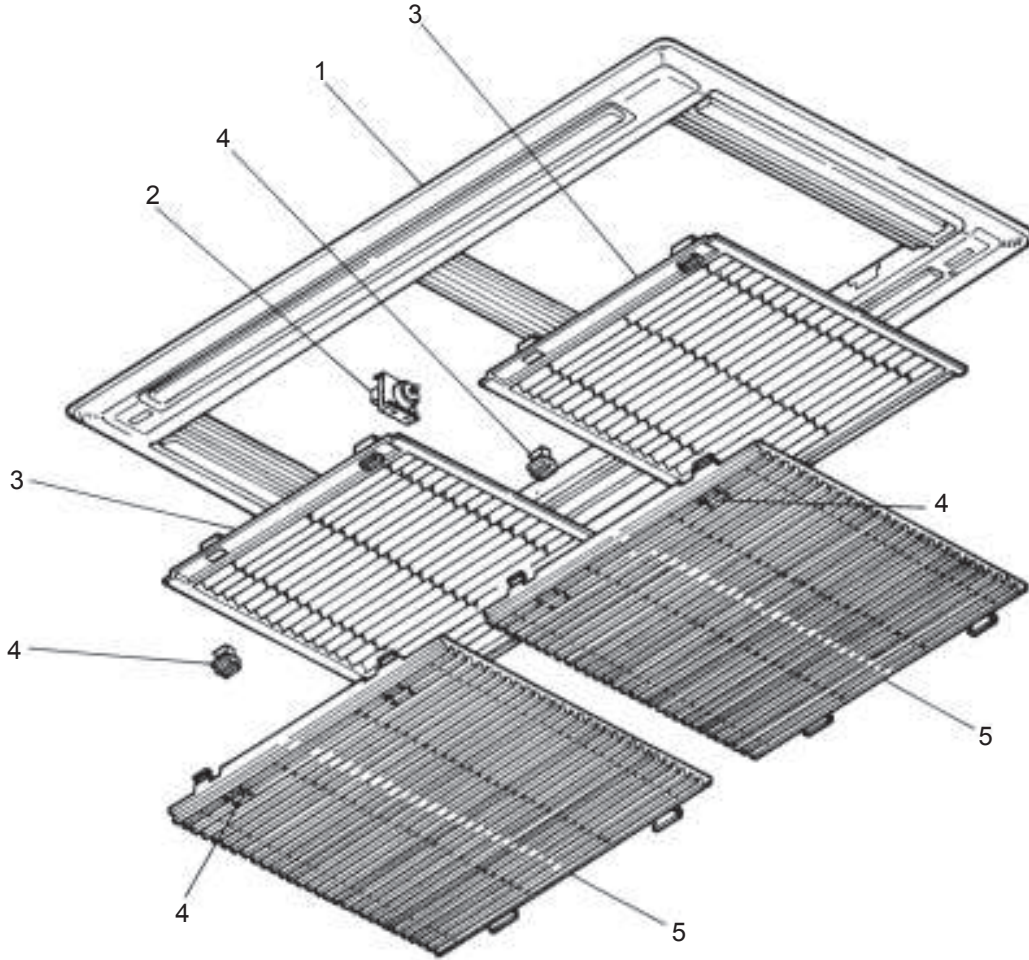
PL30FK2, PL36FK3, PL42FK2 FUNCTIONAL PARTS
PL30FK21, PL36FK31, PL42FK21



Part number that is circled is not shown in the figure.

No.	Parts No.	Parts Name	Specifications Drawing No.	Q'ty/set						Remarks	Circuit Diagram Symbol	Recom- mended Q'ty	Price	
				PL									Unit	Amount
				30	36	42	FK2	FK2 ₁	FK3					
1	T7W 420 716	TERMINAL BLOCK	3P (L1,N,GR)	1	1	1	1	1	1		TB2			
2	R01 556 246	TERMINAL BLOCK	2P (1,2)	1		1		1			TB5			
3	R01 556 246	TERMINAL BLOCK	2P (1,2)	1		1		1			TB4			
	T7W E02 716	TERMINAL BLOCK	2P (1,2)		2		2		2		TB4,5			
4	T7W 413 762	FAN MOTOR	SGR-35DTC	2	2	2					MF1,2			
	T7W 414 762	FAN MOTOR	SGR-36DTC				2	2	2		MF1,2			
5	R01 K01 114	TURBO FAN		2	2	2	2	2	2					
6	T7W 410 255	FAN MOTOR CAPACITOR	12 μ F 220V	2	2	2	2	2	2		C1,2			
7	T7W 410 310	INDOOR CONTROLLER BOARD		1		1		1			I.B			
	T7W E06 310	INDOOR CONTROLLER BOARD			1		1		1		I.B			
8	T7W 410 239	FUSE	250V 6A	1	1	1	1	1	1		F1			
9	T7W 411 716	TERMINAL BLOCK	3P (L1,N,GR)	1	1	1	1	1	1		TB12			
10	T7W A01 799	TRANSFORMER	RED: 15.5VAC, 0.3A BRN: 11.0VAC, 0.6A	1	1	1	1	1	1		T			
11	T7W 410 355	DRAIN WATER LIFT-UP MECHANISM		1	1	1	1	1	1		DP			
12	R01 K01 523	DRAIN SOCKET		1	1	1	1	1	1					
13	R01 K01 266	DRAIN SENSOR		1	1	1	1	1	1		DS			
14	R01 K01 202	PIPE TEMPERATURE THERMISTOR		1	1	1	1	1	1		TH2			
15	R01 K46 480	HEAT EXCHANGER		1	1									
	T7W 414 480	HEAT EXCHANGER				1	1	1	1					
16	R01 08K 097	SPL WASHER		2	2	2	2	2	2					
17	T7W 413 529	DRAIN PAN		1	1	1	1	1	1					
18	R01 K01 119	BELL MOUTH		2				2						
	T7W E01 119	BELL MOUTH			2	2	2		2					
19	R01 J01 202	ROOM TEMPERATURE THERMISTOR		1	1	1	1	1	1		TH1			
20	T7W 410 200	REMOTE CONTROLLER BOARD		1		1		1			R.B			
21	T7W E01 713	REMOTE CONTROLLER BOARD			1		1		1		R.B			
22	T7W 351 077	REMOTE CONTROLLER COVER		1		1		1						
23	T7W E03 049	REMOTE CONTROLLER COVER			1		1		1					
24	R01 L72 095	SCREW CAP		1		1		1						
25	T7W 556 305	REMOTE CONTROLLER CABLE	39ft	1		1		1						
	T7W A00 305	REMOTE CONTROLLER CABLE	33ft		1		1		1					
26	T7W 829 070	CONTROLLER CASE		1	1	1	1	1	1					
27	R01 K04 105	RUBBER MOUNT		6	6	6	6	6	6					
28	R01 005 533	SENSOR HOLDER		1	1	1	1	1	1					
29	R01 A48 524	DRAIN PLUG		1	1	1	1	1	1					

PL30FK2, PL36FK3, PL42FK2 PANEL PARTS
PL30FK2₁, PL36FK3₁, PL42FK2₁



Part number that is circled is not shown in the figure.

No.	Parts No.	Parts Name	Specifications Drawing No.	Q'ty/set						Remarks	Circuit Diagram Symbol	Recom- mended Q'ty	Price	
				PL									Unit	Amount
				30		36		42						
FK2	FK2 ₁	FK3	FK3 ₁	FK2	FK2 ₁									
1	T7W 413 003	AIR OUTLET GRILL	INDOOR PANEL	1	1	1	1	1	1					
2	T7W 410 223	VANE MOTOR		1	1	1	1	1	1	MV				
3	R01 K01 500	AIR FILTER		2	2	2	2	2	2					
4	R01 K01 054	CATCH		8	8	8	8	8	8					
5	R01 K21 691	INTAKE GRILL		2	2	2	2	2	2					
⑥	T7W 413 239	FUSE	250V 0.8A	1	1	1	1	1	1	F2				

1. TIMER

When using a program timer, a program timer adapter (PAC-825AD) is also needed.
(PAC-825AD is included with PAC-SC32PTA.)

Part No.	PAC-SC32PTA (with set back function)
Model Name	Program timer

1-1 Program timer specifications

Parts name	Program timer
Parts No.	PAC-SC32PTA
Exterior dimensions (inch)	5-4/32x4-23/32x23/32 (130x120x18mm)
Installation	Wall mount
Type of clock	Quartz
Clock accuracy	±50 second / month at 77°F
Display-Time	Liquid crystal display
-Week	Liquid crystal display
-Timer setting unit	Liquid crystal display
Program cycle	24 hours
Timer setting unit	30 minutes
No. of set points	48 / day
Power rating	5V DC ±5% (Supplied by Remote Controller)

1-2 Feature of program timer

(1) Daily timer function

Daily timer can be set in 30 minutes units for up to 24 hours.
Each unit can be set for unit ON, unit OFF, or setback operation.

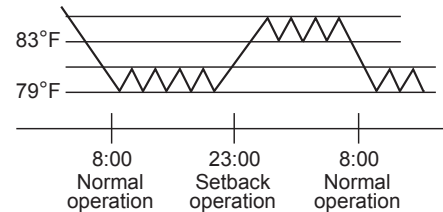
(2) Setback operation (PAC-SC32PTA)

Set back operation is useful for reducing running costs
e.g. At a hotel with a 24-hour system

8:00~23:00 Cooling operation with set temperature at 79°F

23:00~8:00 Setback operation with 4 degrees of setback

As shown in the chart on the right, the set temperature rises 4 degrees automatically during the setback operation. When the setback operation ends, normal operation will begin.

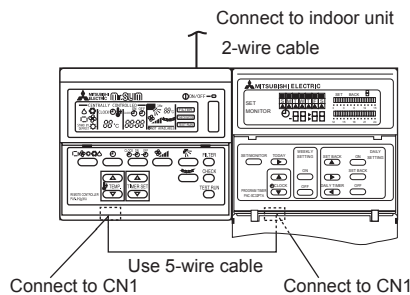


(3) Weekly timer function

Daily timer function can apply to each day of the week.

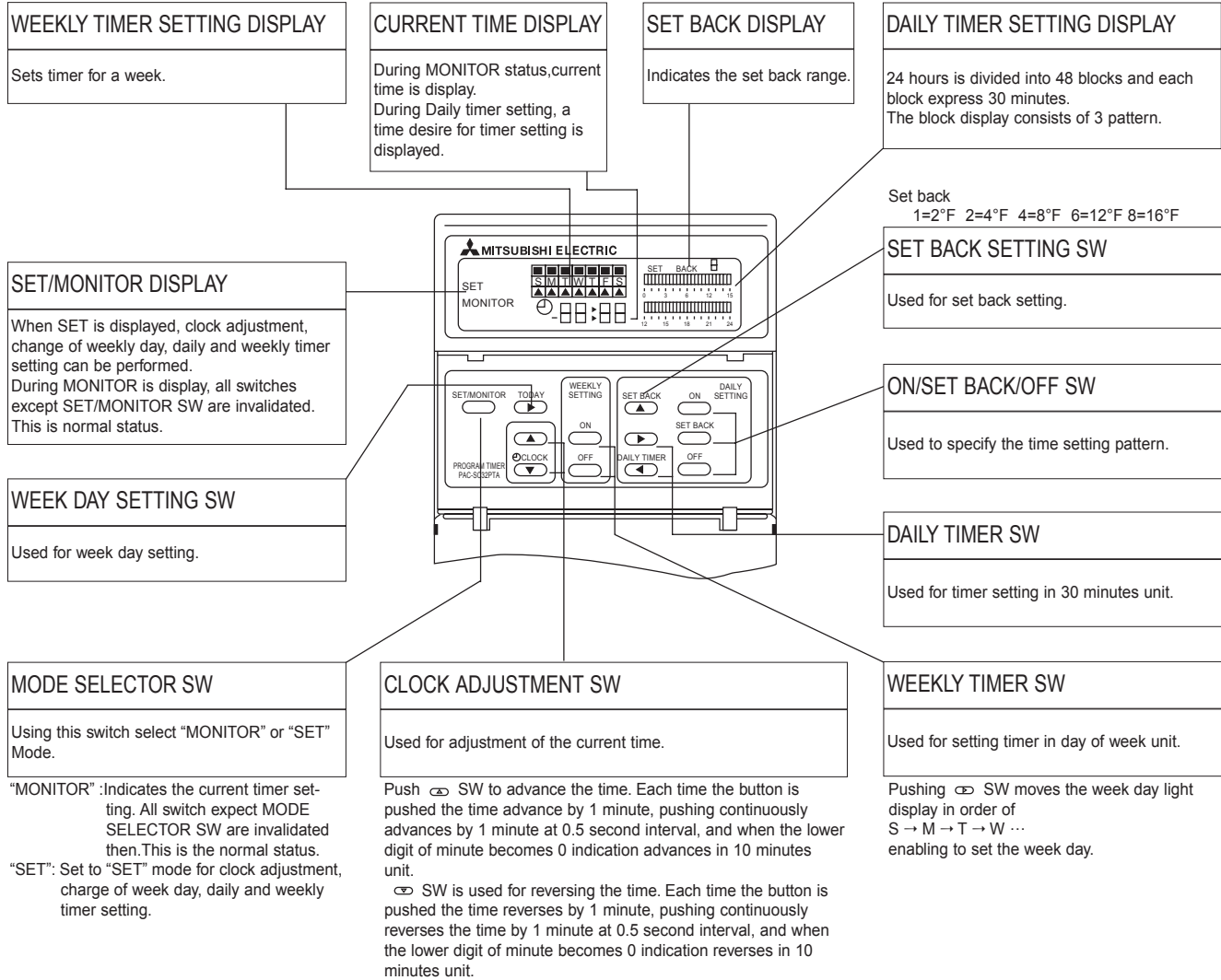
1-3 How to connect program timer

- (1) Install the program timer next to the remote controller the same way as the remote controller is installed.
- (2) Connect the program timer and the remote controller with a 5-wire cable as shown in the figure below



NOTE: While the program timer is connected to the remote controller, the 24hour ON/OFF timer on the remote controller will not operate.

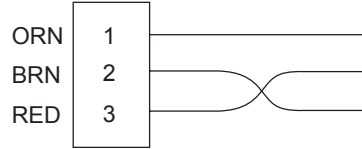
1-4 Names and functions
<PAC-SC32PTA>



2. TIMER ADAPTER

This adapter is needed for system control and for operation via external contacts. Adapter connection is described on page 49.

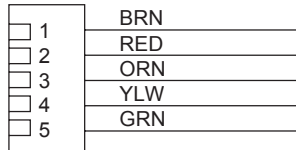
Part No.	PAC-SA89TA-E
----------	--------------



3. MULTIPLE REMOTE CONTROLLER ADAPTER

This adapter is needed for remote indication (operation/check). Adapter connection is described on page 49.

Part No.	PAC-SA88HA-E
----------	--------------



4. MULTI FUNCTION CASEMENT (For HIGH EFFICIENCY FILTER AND FRESH AIR INTAKE)

Part No.	PAC-SG03TM-E
Applicable Model	PL12/18/24/30/36/42FK

5. HIGH EFFICIENCY FILTER ELEMENT

Part No.	PAC-SG01KF
Applicable Model	PL12/18/24/30/36/42FK

6. AIR OUTLET SHUTTER PLATE

Part No.	PAC-SG06SP-E
Applicable Model	PL12/18/24/30/36/42FK

Mr. SLIM™



HEAD OFFICE: MITSUBISHI DENKI BLDG., 2-2-3, MARUNOUCHI CHIYODA-KU, TOKYO100-8310, JAPAN

© Copyright 2000 MITSUBISHI ELECTRIC ENGINEERING CO.,LTD.
Distributed in Jun. 2001. No.OC256 REVISED EDITION-B 20
Distributed in Mar. 2001. No.OC256 REVISED EDITION-A 20
Distributed in Dec. 2000. No.OC256
Made in Japan
Printed in Atlanta 07/2001

New publication, effective Jun. 2001
Specifications subject to change without notice