

**VULCAN**

*CATALOG OF  
REPLACEMENT PARTS*

*WARMER*

*MODEL*

*MGW14*

*ML-103827*

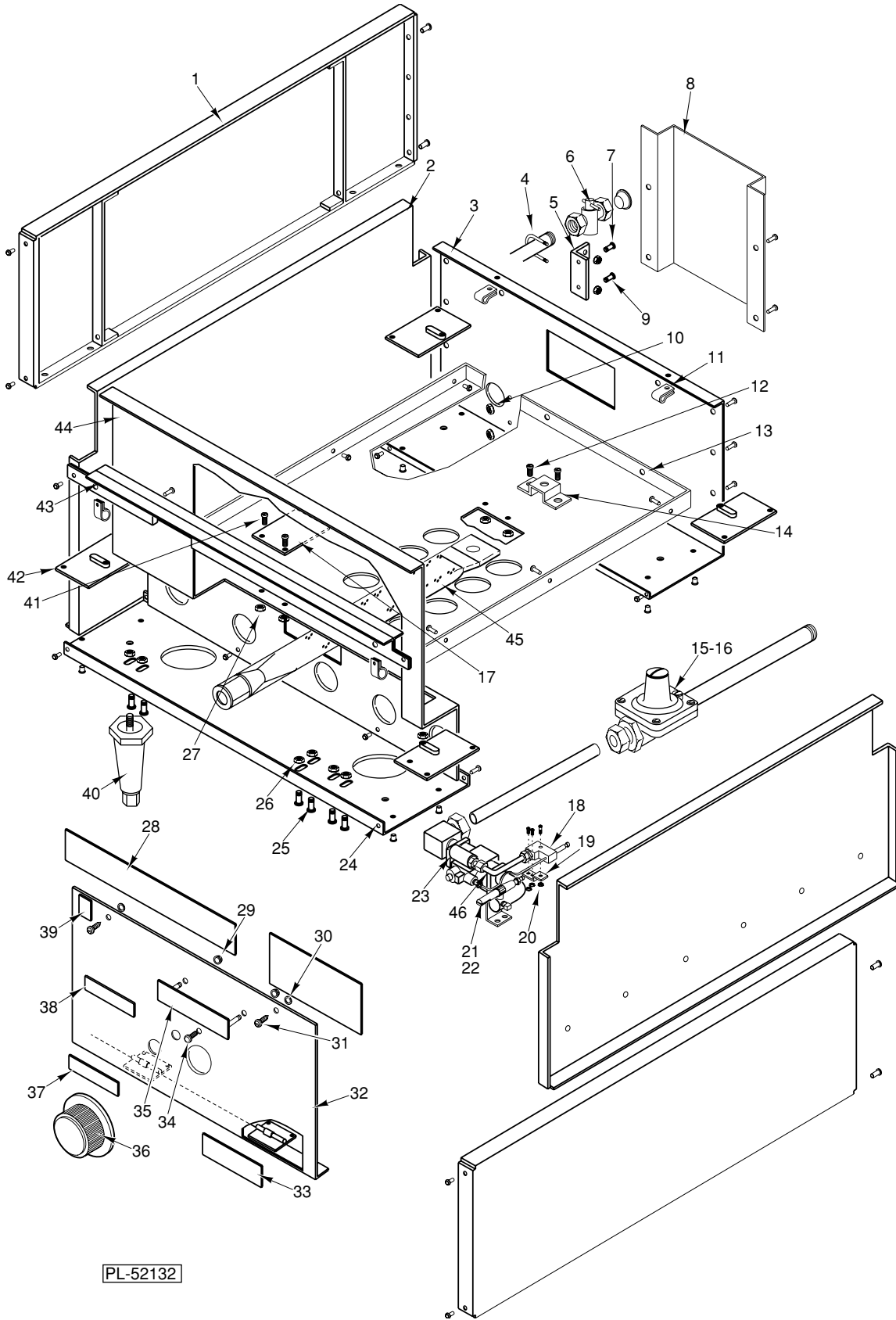


# MGW14 WARMER

## FORM 30974

### TABLE OF CONTENTS WITH PL NUMBERS

	PAGE	DESCRIPTION
	2	BLANK PAGE
	3	TABLE OF CONTENTS
PL-52132	5	MGW14 WARMER COMPONENTS
PL-52133	7	MGW14 WARMER BODY

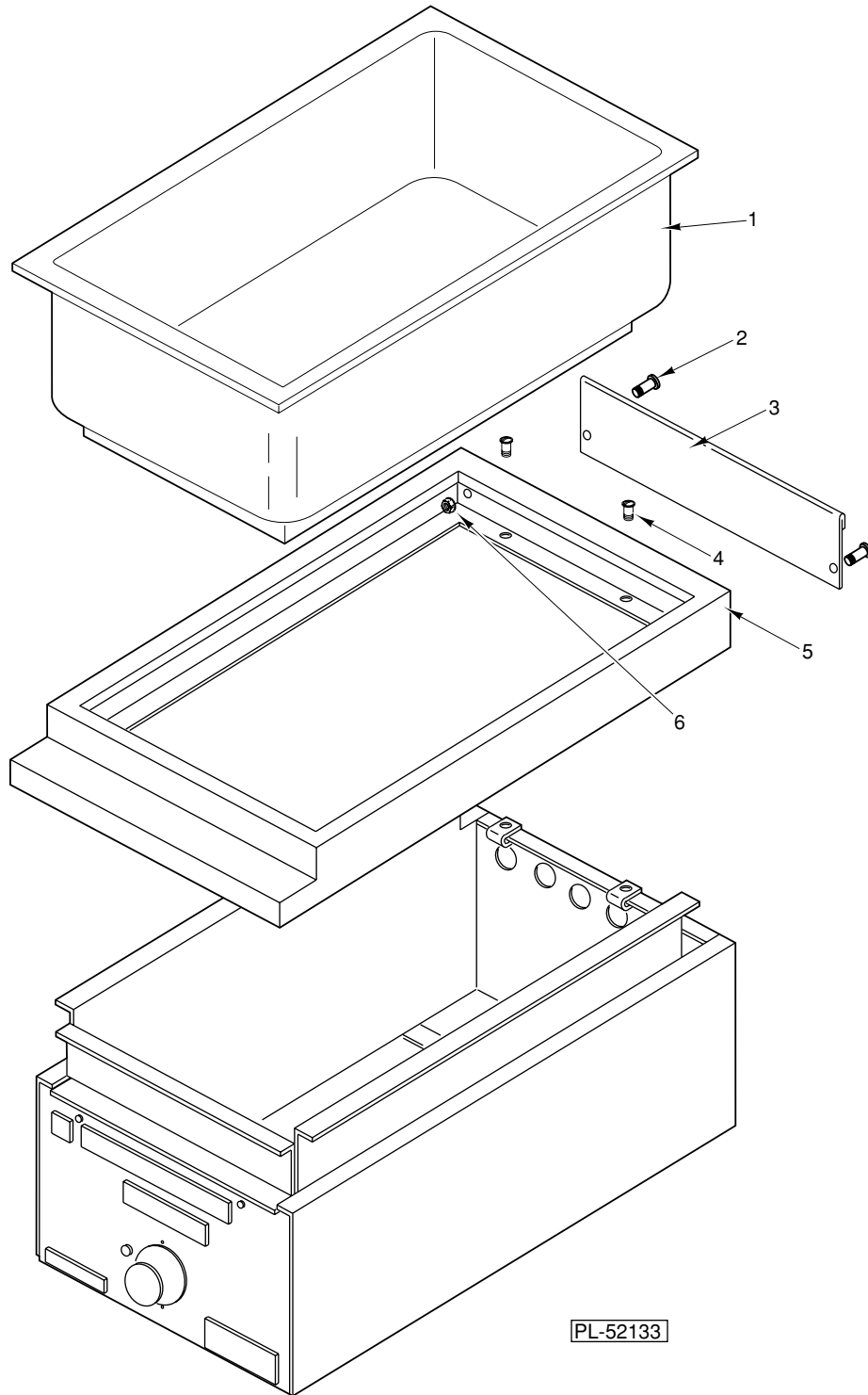


PL-52132

MGW14 WARMER COMPONENTS

## MGW14 WARMER COMPONENTS

ILLUS. PL-52132	PART NO.	NAME OF PART	AMT.
1	00-920001-00001	Side Panel Weldment .....	1
2	00-920159	Insulation - Panel Side .....	2
3	00-920525	Member - Rear Cross .....	1
4	00-920516	"U" Bolt ¼ x ½ .....	1
5	00-920511	Bracket-Inlet Pipe .....	1
6	00-920601	Valve-Manual .....	1
7	SC-119-23	Mach. Screw 10-24 x ½ Hex Washer Hd. ....	2
8	00-920170	Flue .....	1
9	NS-038-08	Lock Nut ¼-20 .....	2
10	NS-044-09	Nut Assy. 10-24 Hex Keps .....	2
11	00-911037-00001	"U" Nut .....	2
12	SC-119-23	Mach. Screw 10-24 x ½ Hex Washer Hd. ....	2
13	00-920171	Panel - Bottom .....	1
14	00-920164	Bracket - Burner .....	1
15	00-820644-00001	Regulator Assy. (NAT) .....	1
16	00-820644-00002	Regulator Assy. (PRO) .....	1
17	00-920183	Shield - Pilot .....	1
18	00-920189	Pilot .....	1
19	00-920168	Bracket - Pilot .....	1
20	NS-011-07	Mach. Nut 6-32 Hex .....	3
21	00-920527-00011	Spud - Orifice (NAT) #62 .....	1
22	00-920527-00012	Spud - Orifice (PRO) #74 .....	1
23	00-920776-00001	Manifold Assy. ....	1
24	00-920131	Member - Front Cross Channel .....	1
25	SC-119-23	Mach. Screw 10-24 x ½ Hex Washer Hd. ....	10
26	NS-044-09	Nut Assy. 10-24 Hex Keps .....	12
27	NS-011-07	Mach. Nut 6-32 Hex .....	2
28	00-920052	Plate-Lighting Instructions .....	1
29	NS-047-68	Lock Nut ½ .....	2
30	NS-038-08	Lock Nut ¼-20 .....	2
31	00-820365	Screw - Quick Opening .....	2
32	00-920553-00001	Front Panel Assy. ....	1
33	00-920507	Label-Instruction .....	1
34	PB-004-69	Plug-Hole .....	1
35	00-417700-00003	Nameplate 4" .....	1
36	00-920392	Knob-Control .....	1
37	00-344646-00001	Label - Legs .....	1
38	00-920196	Label - Lighter Hole .....	1
39	00-086556-00001	Label - Seal of Approval (NSF) .....	1
40	00-804405	Leg - With Adjustable Foot .....	4
41	SC-109-10	Mach. Screw 6-32 x ¾ Pan Hd. ....	2
42	00-920140-00001	Leg Pad Weldment .....	4
43	00-920670	Upper Front Cross Angle Assy. ....	1
44	00-920175	Shield - Front .....	1
45	00-920526	Burner .....	1
46	00-920192	Tubing - Pilot Supply .....	1



**MGW14 WARMER BODY**

## MGW14 WARMER BODY

ILLUS. PL-52133	PART NO.	NAME OF PART	AMT.
1	00-920146-00011	Pan - Warmer .....	1
2	<a href="#">SC-119-23</a>	Mach. Screw 10-24 x 1/2 Hex Washer Hd. ....	2
3	00-920138	Splash - Rear .....	1
4	<a href="#">SD-036-61</a>	Self-Tapping Screw 10-16 x 1/2 Slotted Truss Hd., Type B .....	2
5	00-920130-00001	Top Frame Weldment .....	1
6	<a href="#">NS-044-09</a>	Nut Assy. 10-24 Hex Keps .....	2

# MGW14 MEDIUM DUTY GAS COUNTER FOOD WARMER

## SERVICE

**WARNING:** THE FOOD WARMER AND ITS PARTS ARE HOT. USE CARE WHEN OPERATING, CLEANING OR SERVICING THE FOOD WARMER.

### ACCESSING MAIN BURNER OR PRESSURE REGULATOR

1. Lift out the pan well.
2. Remove burner by lifting it from the burner support on the bottom panel.
3. Remove screws holding bottom panel to side insulation panels and front shield.
4. Lift out the bottom panel for access to the pressure regulator.
5. Reverse Steps 1-4 to reassemble.

Check that the burner air shutter is centered over the orifice spud.

### OTHER CONTROL PARTS

Other control parts are accessible by opening the front panel.

1. Remove control knob by grasping the outer edge and pulling the knob straight out, without twisting or turning.
2. Turn quick connect fasteners  $\frac{1}{4}$  turn counterclockwise.
3. Pull the top edge of the front panel to open.
4. Reverse Steps 1-3 to close the front panel.