

VULCAN

*SERVICE MANUAL & CATALOG OF
REPLACEMENT PARTS*

GAS HOTPLATE

MODEL

*MGH14A
ML-103826*



MGH14A MEDIUM DUTY GAS COUNTER HOTPLATE

SERVICE

WARNING: THE HOTPLATE AND ITS PARTS ARE HOT. USE CARE WHEN OPERATING, CLEANING OR SERVICING THE HOTPLATE.

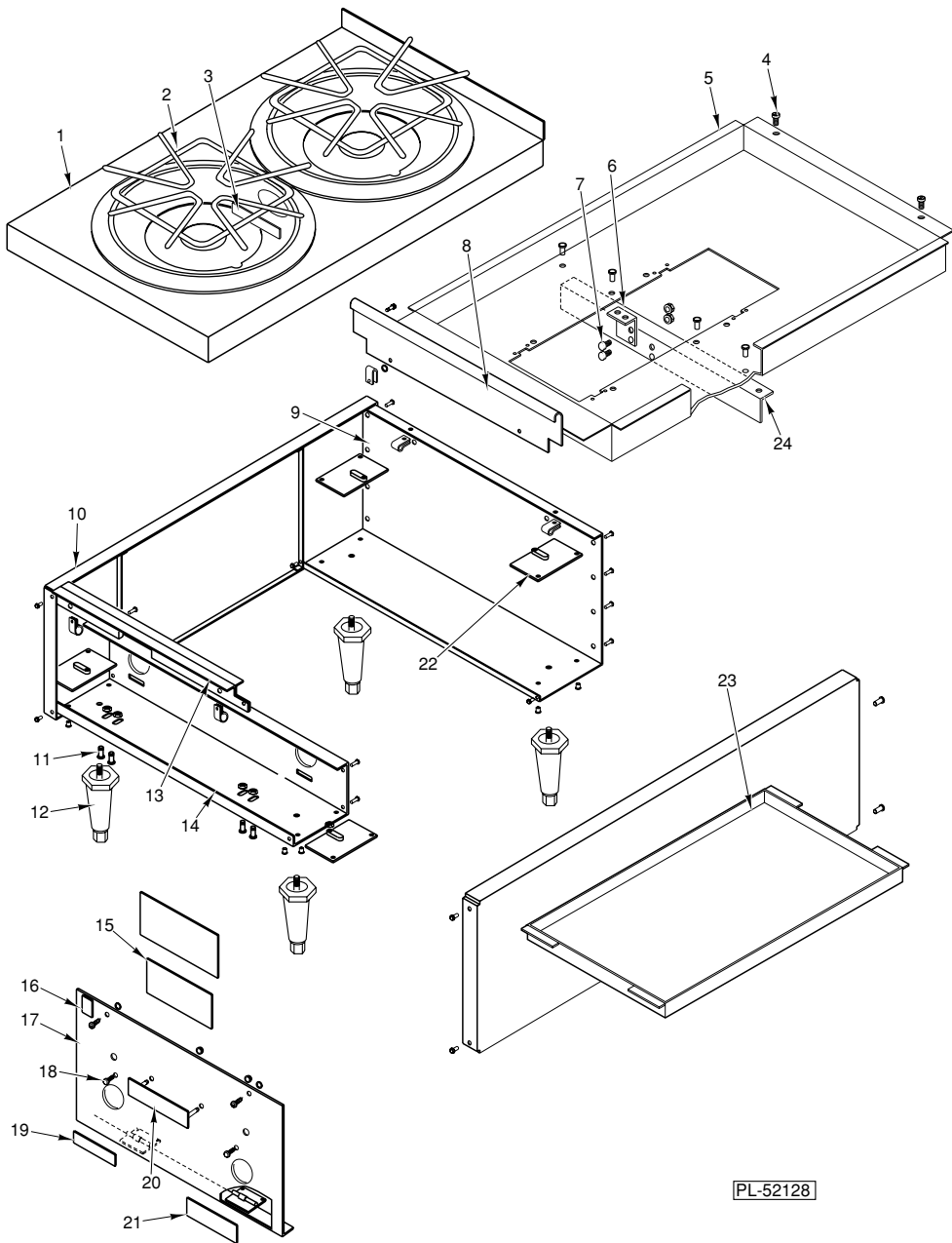
REMOVING BURNERS

Lift the top grates, then lift the burners carefully and maneuver venturi tube out of the top opening.

ACCESSING PRESSURE REGULATOR

To gain access to the pressure regulator, remove two screws on the back. Lift off the hold-down strip and slide the top panel toward the front. If necessary, remove the top drip tray by removing two screws on top.

After reassembly, check that the burner venturi has engaged with the orifice fitting.

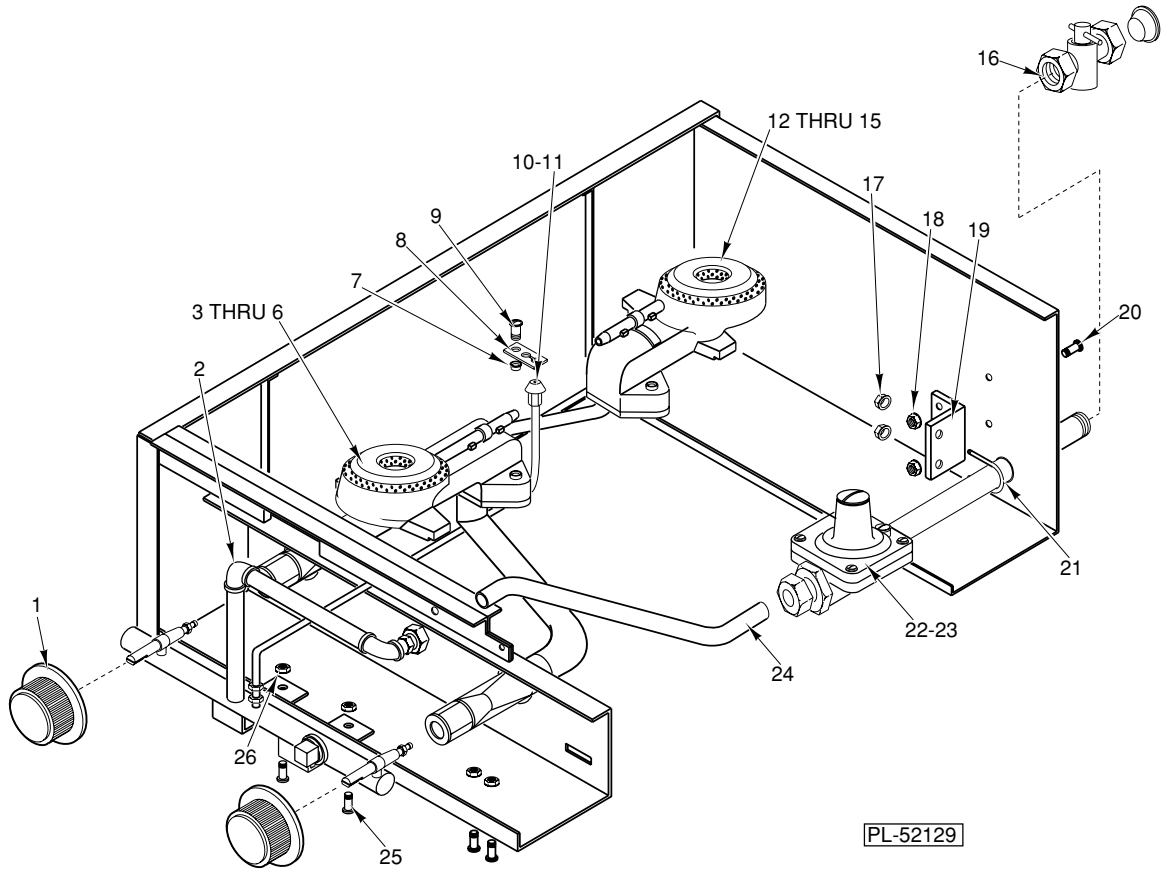


PL-52128

HOTPLATE ASSEMBLY

HOTPLATE ASSEMBLY

ILLUS. PL-52128	PART NO.	NAME OF PART	AMT.
1	00-920229-00001	Frame-Top	1
2	00-920231	Grate-Top	2
3	00-920196	Label	1
4	SD-036-61	Self-Tapping Screw 10-16 x 1/2 Slotted Truss Hd., Type B	2
5	00-920212	Tray-Drip Top	1
6	00-920647	Bracket-Pilot	1
7	SC-119-23	Mach. Screw 10-24 x 1/2 Hex Washer Hd.	2
8	00-920207	Strip-Back Hold Down	1
9	00-920642	Member-Rear Cross	1
10	00-920001-00001	Side Panel Weldment	2
11	SC-119-23	Mach. Screw 10-24 x 1/2 Hex Washer Hd.	4
12	00-804405	Leg - With Adjustable Foot	4
13	00-920670	Upper Front Cross Angle Assy.	1
14	00-920641	Member-Front Cross	1
15	00-920650	Plate-Lighting/Shutdown	1
16	00-086556-00001	Label	1
17	00-920640-00001	Front Panel Weldment	1
18	PB-004-69	Plug-Hole	2
19	00-344646-00001	Label	1
20	00-417700-00003	Nameplate	1
21	00-920507	Label-Instruction	1
22	00-920140-00001	Leg Pad Weldment	4
23	00-920643	Pan-Drip Bottom	1
24	00-920240	Bracket-Pilot Support	1



GAS PIPING

GAS PIPING

ILLUS. PL-52129	PART NO.	NAME OF PART	AMT.
1	00-920392	Knob-Control	2
2	00-920644-00001	Manifold Assy.	1
3	00-920674-00001	Front Burner Assy.	1
4	00-920339	Tube-Venturi (Front)	1
5	00-920659	Head-Burner	1
6	00-806469	Gasket	1
7	NS-044-09	Nut Assy. 10-24 Hex Keps	1
8	00-920677	Clip-Pilot	1
9	SC-119-23	Mach. Screw 10-24 x 1/2 Hex Washer Hd.	1
10	00-920648-00001	Pilot Tube Assy.	1
11	00-920676	Valve-Pilot	1
12	00-920675-00001	Rear Burner Assy.	1
13	00-920337	Tube-Venturi (Rear)	1
14	00-920659	Head-Burner	1
15	00-806469	Gasket	1
16	00-920601	Valve-Manual	1
17	NS-038-08	Lock Nut 1/4-20	2
18	NS-044-09	Nut Assy. 10-24 Hex Keps	2
19	00-920511	Bracket-Inlet Pipe	1
20	SC-119-23	Mach. Screw 10-24 x 1/2 Hex Washer Hd.	1
21	00-920516	"U" Bolt 1/4 x 1/2	1
22	00-920778-00001	Regulator Assy. (4") (Nat.)	1
23	00-920778-00002	Regulator Assy. (10") (PRO)	1
24	00-920230	Tubing-Primary Supply	1
25	SC-119-23	Mach. Screw 10-24 x 1/2 Hex Washer Hd.	2
26	NS-044-09	Nut Assy. 10-24 Hex Keps	2
	00-920237-00011	Valve-Burner (#52 Orifice)(NAT)(Use W/items 3 & 8)	2
	00-920237-00012	Valve-Burner (#60 Orifice)(PRO)(Use W/items 3 & 8)	2
	00-920656	Flash Tube Assy. (Not Shown)	2

