

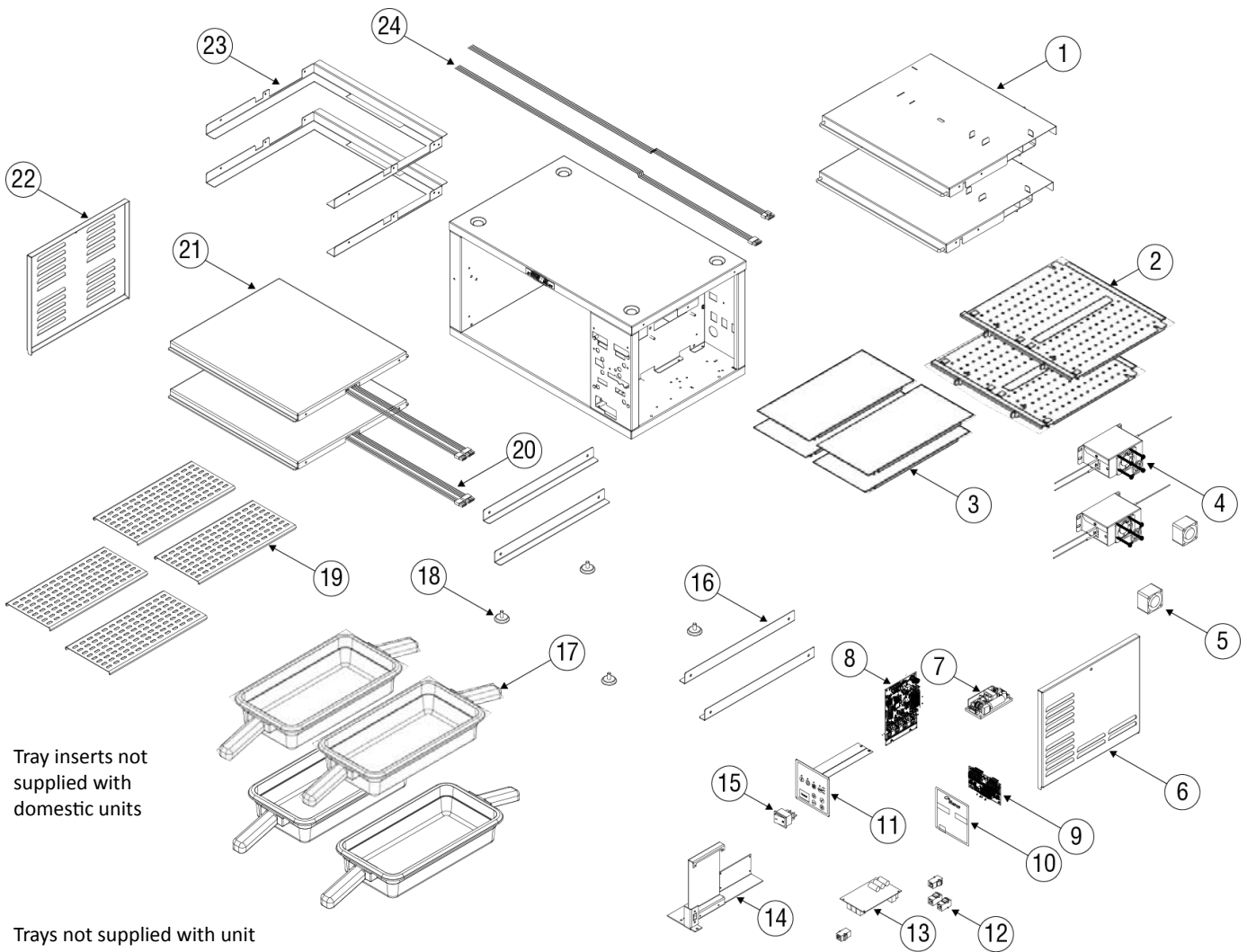
Forced Air Holding Cabinet

Parts List

Contents

| | |
|-------------------------------------|----|
| MHCFA22 - Common Components | 2 |
| MHCFA23 - Common Components | 4 |
| MHCFA24 - Common Components | 6 |
| MHCFA34 - Common Components | 8 |
| MHCFA42EX - Common Components | 10 |
| ICC Replacement Parts | 12 |

MHCFA22 - Common Components



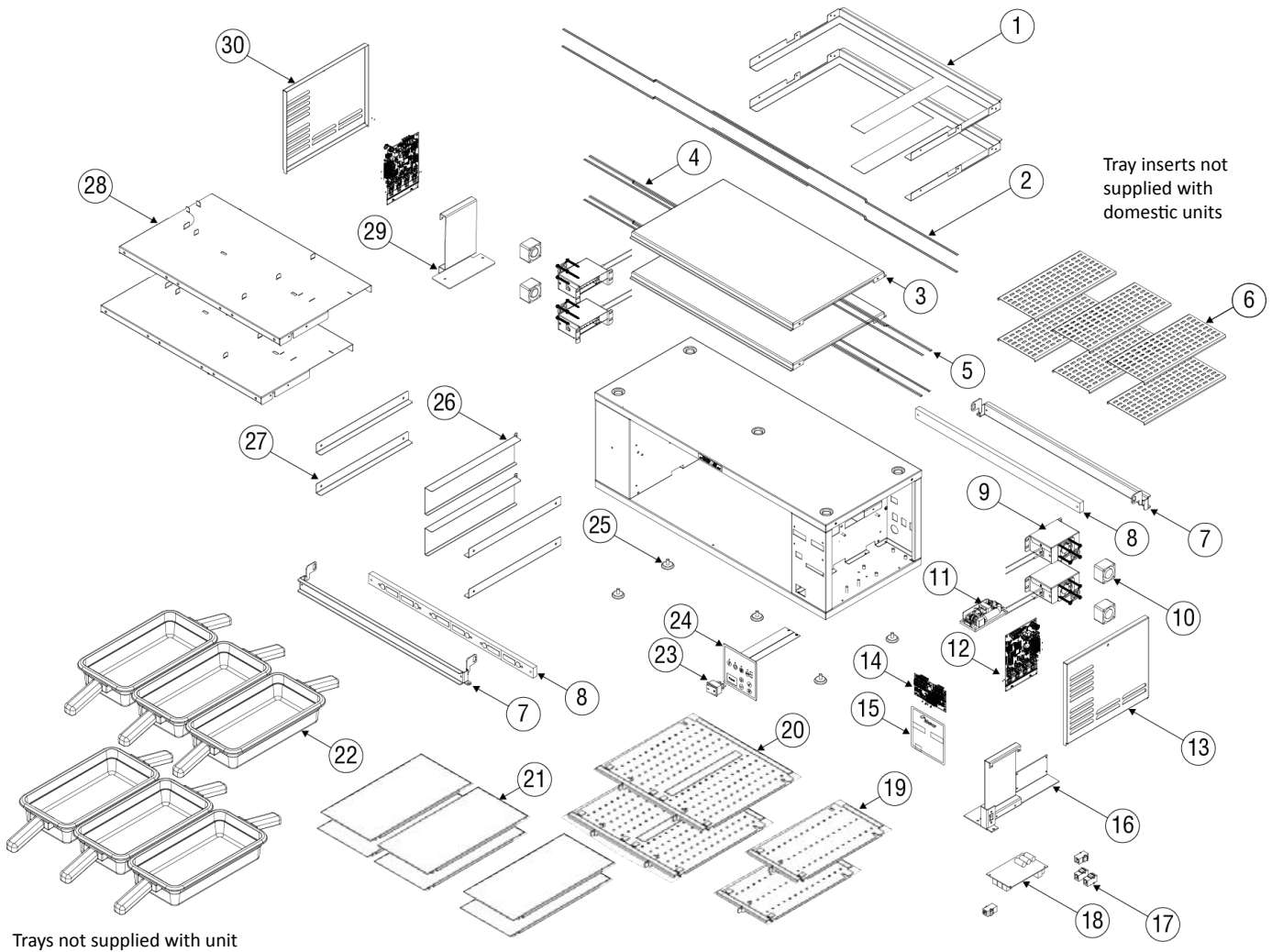
Tray inserts not supplied with domestic units

Trays not supplied with unit

| Key | Description | Part Number | Note |
|-----|--|------------------|------|
| 1 | Baffle Assembly | 000-CRG-000M | |
| 2 | Jet Plate Assembly, 2 Wide | 000-CRG-0055 | |
| 3 | Tray Seal | 243-CQW-004A | |
| 4 | Heater Assembly, 120V | 000-CRG-0064 | |
| | Heater Assembly, 230V | 000-CRG-003D | |
| 5 | Fan Motor, 12VDC | 2168517 | |
| 6 | RH Side Cover Panel | 359-CQX-0007 | |
| 7 | Power Supply, 12VDC, 30W | 2195354 | |
| 8 | I/O Board | 000-CZ0-003G-S | [A] |
| 9 | PCB Display Board | 000-CZ0-003L-S | |
| 10 | Display Overlay | 1708608 | |
| 11 | Membrane Switch | 2195357 | |
| 12 | Coupler, Female, RJ-12, Connects Timer Bar to PHU | 2198603 | |
| | Coupler, Female, RJ-45, Connects Primary PHU to Kitchen Minder | 2198596 | |
| 13 | Control | 2198580 | |
| 14 | I/O Board Bracket | 418-CQR-000Y | |
| 15 | Rocker Switch, 250V, 16A | 2195339 | |
| 16 | Heater Side Bracket | MER340045 | |
| | Heater Side Bracket, EX Models | 243-CQY-003P | |
| 17 | Plastic Tray, Double Handle | 1708578 | |
| 18 | Hi Temp Leveling Mount | MER340011 | |
| 19 | Tray Insert | MER10001682 | |
| 20 | Heater Pad, 330Watt, 120V | 2198616 | |
| | Heater Pad, 330Watt, 230V | 2198629 | |
| 21 | Lower Heater Tray | 3239767 | |
| 22 | LH Side Cover Panel | 359-CQX-0032 | |
| 23 | Baffle Support | 243-CQZ-003D | |
| 24 | Probe, Air Heater | 2186996 | |
| | Probe, Pad Heater | 2187029 | |
| | Bracket, Timer Bar, 2W | 271-CR8-003B | |
| | Cable, Data, 8", for secondary control boxes | 2187049 | |
| | Cable, USB | 2187007 | |
| | Comm Cable, 6-pin | 2186998 | |
| | Cord, NEMA 5-20P, Domestic | 2186984 | |
| | Cord, Export | Varies per Model | |
| | Harness, ICC to I/O | 2187057 | |
| | Timer Bar - See ICC Replacement Parts on page 12 | Varies per Model | |

NOTE: [A] I/O Board must be loaded with software. Starting March 2016, factory will mark the backside with an orange sticker when software is loaded.

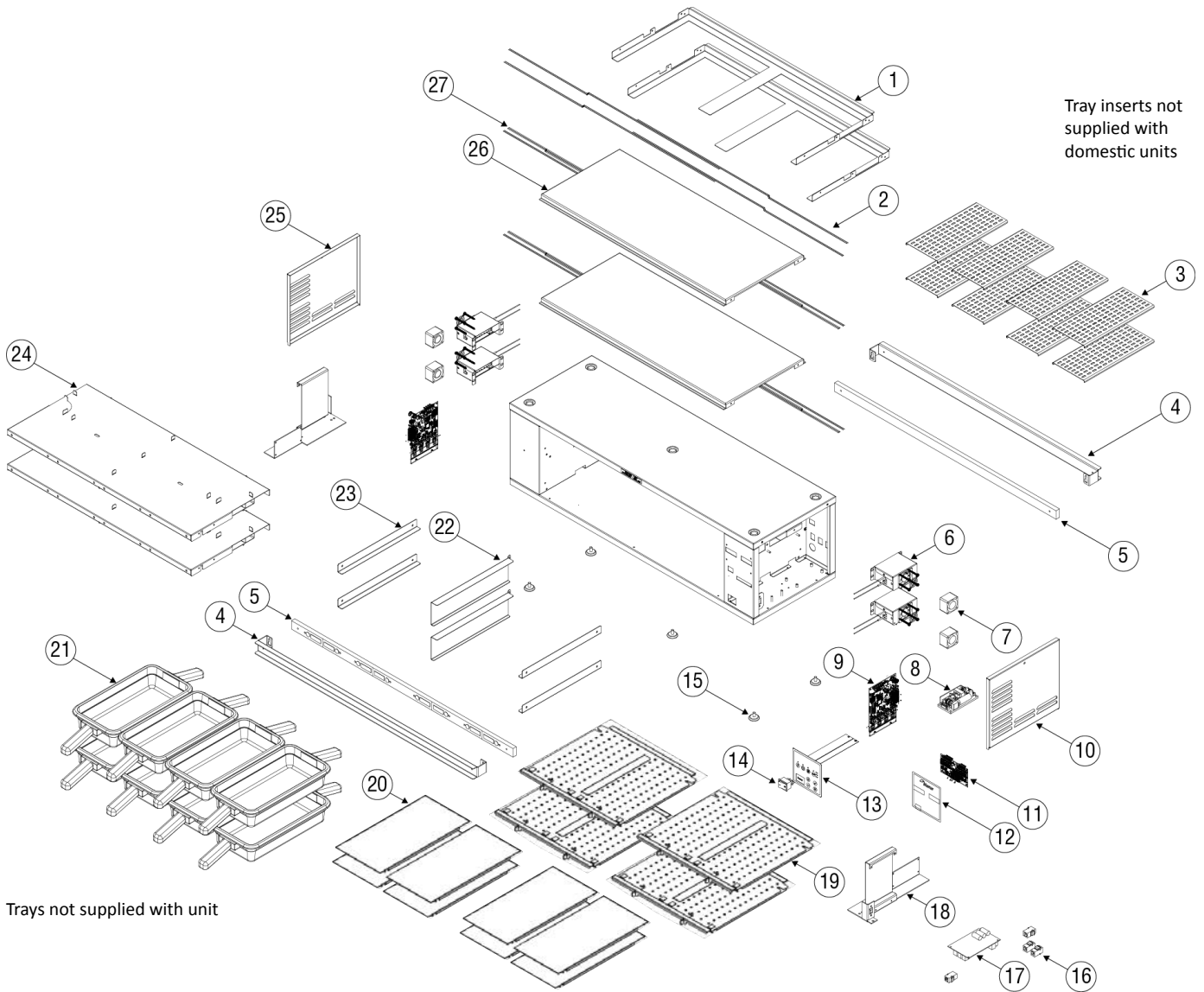
MHCFA23 - Common Components



| Key | Description | Part Number | Note |
|-----|--|------------------|------|
| 1 | Baffle Support | 243-CQZ-000K | |
| 2 | Probe, Air Heater | 2186996 | |
| | Probe, Pad Heater | 2187029 | |
| 3 | Lower Heater Tray | 3239768 | |
| 4 | Heater Pad, 200W, 230V | 2198598 | |
| 5 | Heater Pad, 100W, 230V, Single | 2198599 | |
| 6 | Tray Insert | MER10001682 | |
| 7 | Bracket, Timer Bar, 3W | 271-CR8-0039 | |
| 8 | Timer Bar - See ICC Replacement Parts on page 12 | Varies per Model | |
| 9 | Heater Assembly, 700W, 230V | 000-CRG-003D | |
| | Heater Assembly, 350W, 230V | 000-CRG-003C | |
| 10 | Fan Motor, 12VDC | 2168517 | |
| 11 | Power Supply, 12VDC, 30W | 2195354 | |
| 12 | I/O Board | 000-CZ0-003G-S | [A] |
| 13 | RH Side Cover Panel | 359-CQX-0007 | |
| 14 | PCB Display Board | 000-CZ0-003L-S | |
| 15 | Display Overlay | 1708590 | |
| 16 | I/O Board Bracket | 418-CQR-000Y | |
| 17 | Coupler, Female, RJ-12, Connects Timer Bar to PHU | 2198603 | |
| | Coupler, Female, RJ-12, Connects Primary PHU to Secondary PHU | 2198597 | |
| | Coupler, Female, RJ-45, Connects Primary PHU to Kitchen Minder | 2198596 | |
| 18 | Control | 2198580 | |
| 19 | Jet Plate Assembly, 1 Wide | 000-CRG-0015 | |
| 20 | Jet Plate Assembly, 2 Wide | 000-CRG-0055 | |
| 21 | Tray Seal | 243-CQW-004A | |
| 22 | Plastic Tray, Double Handle | 1708578 | |
| 23 | Rocker Switch, 250V, 16A | 2195339 | |
| 24 | Membrane Switch | 2195357 | |
| 25 | Hi Temp Leveling Mount | MER340011 | |
| 26 | Center Divider Support | 270-CQZ-004G | |
| 27 | Heater Side Bracket | MER340045 | |
| | Heater Side Bracket, EX Models | 243-CQY-003P | |
| 28 | Baffle Assembly | 000-CRG-000F | |
| 29 | I/O Board Bracket | 418-CQR-000Z | |
| 30 | LH Side Cover Panel | 359-CQX-000J | |
| | Cable, Data, 8", for secondary control boxes | 2187049 | |
| | Cable, USB, 1 Ft | 2187007 | |
| | Comm Cable, 6-pin | 2186998 | |
| | Comm Cable, 8-pin, 52" | 2186997 | |
| | Cord, NEMA 6-20P, Domestic | 2186993 | |
| | Cord, Export | Varies per Model | |
| | Harness, ICC to I/O | 2187057 | |

NOTE: [A] I/O Board must be loaded with software. Starting March 2016, factory will mark the backside with an orange sticker when software is loaded.

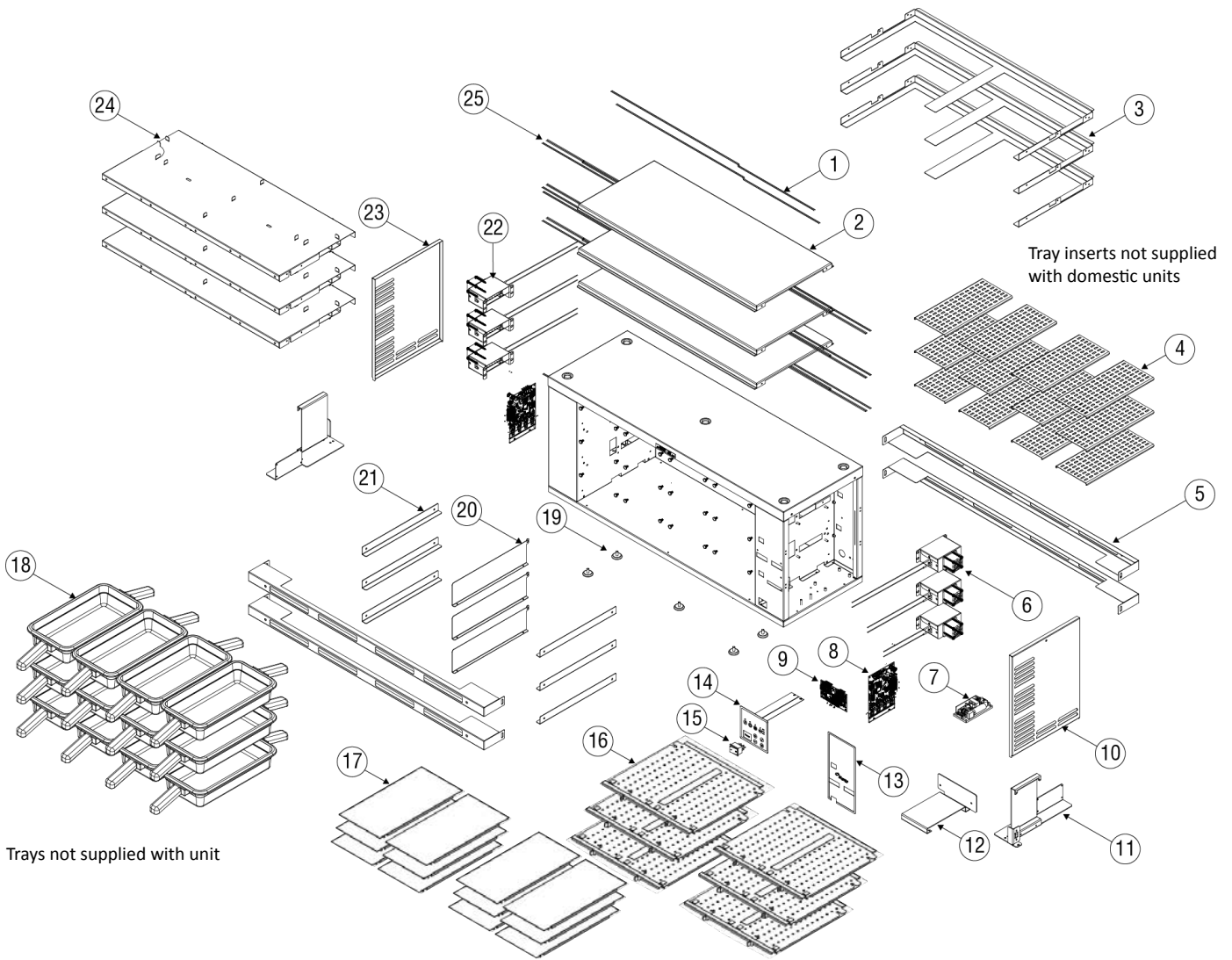
MHCFA24 - Common Components



| Key | Description | Part Number | Note |
|-----|--|------------------|------|
| 1 | Baffle Support | 243-CQZ-000F | |
| 2 | Probe, Air Heater | 2186996 | |
| | Probe, Pad Heater | 2187029 | |
| 3 | Tray Insert | MER10001682 | |
| 4 | Bracket, Timer Bar, 4W | 271-CR8-0037 | |
| 5 | Timer Bar - See ICC Replacement Parts on page 12 | Varies per Model | |
| 6 | Heater Assembly, 700W, 230V | 000-CRG-003D | |
| | Heater Assembly, 450W, 230V, EX Models | 000-CRG-003F | |
| 7 | Fan Motor, 12VDC | 2168517 | |
| 8 | Power Supply, 12VDC, 30W | 2195354 | |
| 9 | I/O Board | 000-CZ0-003G-S | [A] |
| 10 | RH Side Cover Panel | 359-CQX-0007 | |
| 11 | PCB Display Board | 000-CZ0-003L-S | |
| 12 | Display Overlay | 1708590 | |
| 13 | Membrane Switch | 2195357 | |
| 14 | Rocker Switch, 250V, 16A | 2195339 | |
| 15 | Hi Temp Leveling Mount | MER340011 | |
| 16 | Coupler, Female, RJ-12, Connects Timer Bar to PHU | 2198603 | |
| | Coupler, Female, RJ-12, Connects Primary PHU to Secondary PHU | 2198597 | |
| | Coupler, Female, RJ-45, Connects Primary PHU to Kitchen Minder | 2198596 | |
| 17 | Control | 2198580 | |
| 18 | I/O Board Bracket | 418-CQR-000Y | |
| 19 | Jet Plate Assembly, 2 Wide | 000-CRG-0055 | |
| 20 | Tray Seal | 243-CQW-004A | |
| 21 | Plastic Tray, Double Handle | 1708578 | |
| 22 | Center Divider Support | 270-CQZ-004G | |
| 23 | Heater Side Bracket | MER340045 | |
| | Heater Side Bracket, EX Models | 243-CQY-003P | |
| 24 | Baffle Assembly | 000-CRG-000E | |
| 25 | LH Side Cover Panel | 359-CQX-000J | |
| 26 | Lower Heater Tray | 3239769 | |
| 27 | Heater Pad, 200W, 230V | 2198598 | |
| | Cable, 8-pin, Primary | 2187006 | |
| | Cable, Data, 8", for secondary control boxes | 2187049 | |
| | Cable, USB, 1Ft | 2187007 | |
| | Comm Cable, 6-pin, | 2186998 | |
| | Comm Cable, 8-pin, 52" | 2186997 | |
| | Cord, NEMA 6-20P, Domestic | 2186993 | |
| | Cordset, Pin/Sleeve, 16A, Export | 2187033 | |
| | Harness, ICC to I/O | 2187057 | |

NOTE: [A] I/O Board must be loaded with software. Starting March 2016, factory will mark the backside with an orange sticker when software is loaded.

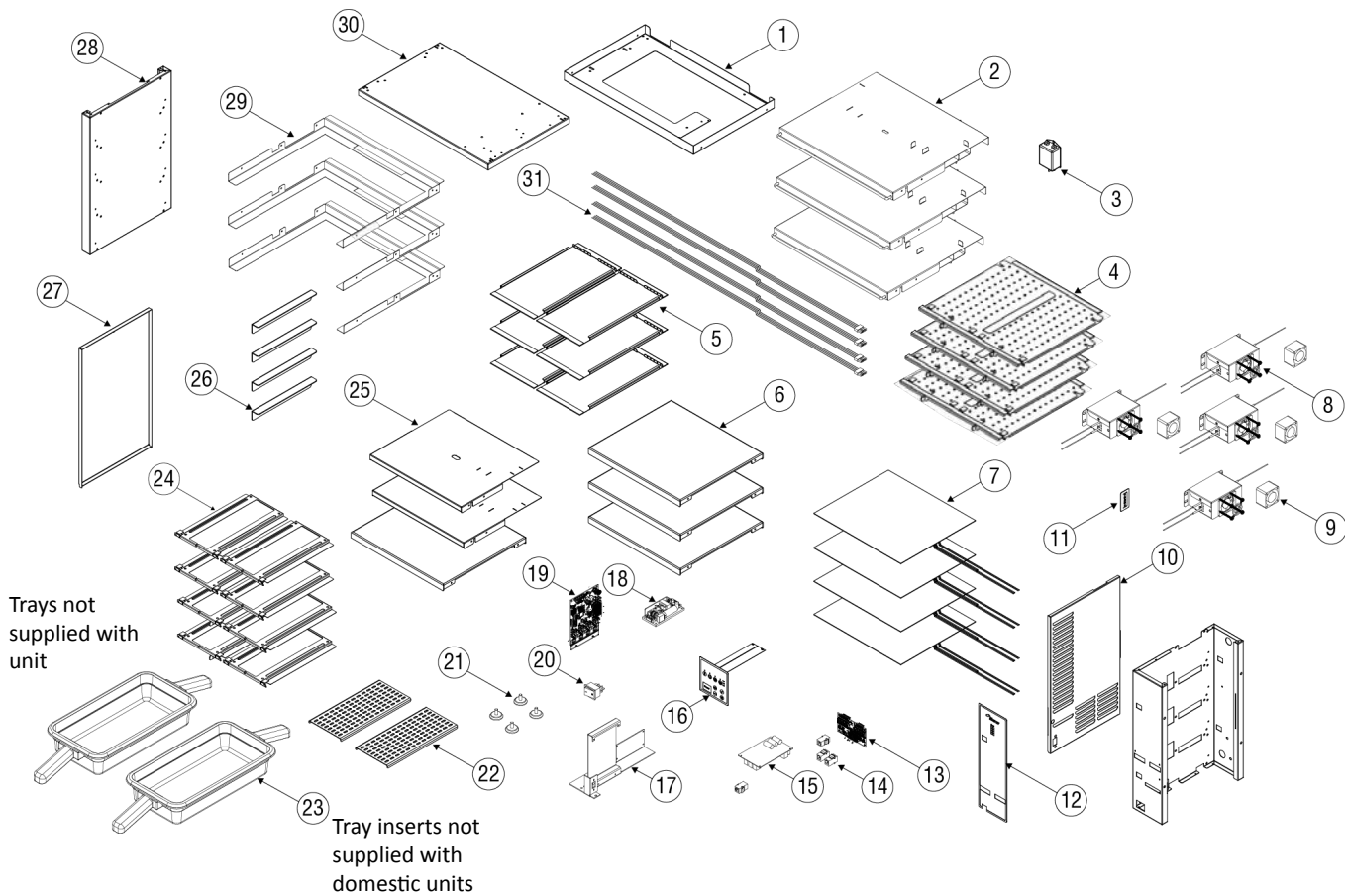
MHCFA34 - Common Components



| Key | Description | Part Number | Note |
|-----|--|------------------|------|
| 1 | Probe, Air Heater | 2186996 | |
| | Probe, Pad Heater | 2187029 | |
| 2 | Lower Heater Tray | 3239769 | |
| 3 | Baffle Support | 243-CQZ-000F | |
| 4 | Tray Insert | MER10001682 | |
| 5 | Bracket, Timer Bar, 4W | 271-CR8-0037 | |
| 6 | Fan Motor, 12VDC | 2168517 | |
| 7 | Power Supply, 12VDC, 30W | 2195354 | |
| 8 | I/O Board | 000-CZ0-003G-S | [A] |
| 9 | PCB Display Board | 000-CZ0-003L-S | |
| 10 | RH Side Cover Panel | 359-CQX-0008 | |
| 11 | I/O Board Bracket | 418-CQR-000Y | |
| 12 | I/O Board Bracket | 418-CQR-000Z | |
| 13 | Display Overlay | 1708593 | |
| 14 | Membrane Switch | 2195357 | |
| 15 | Rocker Switch, 250V, 16A | 2195339 | |
| 16 | Jet Plate Assembly, 2 Wide | 000-CRG-0055 | |
| 17 | Tray Seal | 243-CQW-004A | |
| 18 | Plastic Tray, Double Handle | 1708578 | |
| 19 | Hi Temp Leveling Mount | MER340011 | |
| 20 | Center Divider Support | 270-CQZ-004G | |
| 21 | Heater Side Bracket | MER340045 | |
| | Heater Side Bracket, EX Models | 243-CQY-003P | |
| 22 | Heater Assembly, 450W, 230V | 000-CRG-003F | |
| | Heater Assembly, 350W, 230V, EX Models | 000-CRG-003C | |
| 23 | LH Side Cover Panel | 359-CQX-0009 | |
| 24 | Baffle Assembly | 000-CRG-000E | |
| 25 | Heater Pad, 200W, 230V | 2198598 | |
| | Heater Pad, 100W, 230V, EX Models | 2198628 | |
| | Cable, Data, 8", for secondary control boxes | 2187049 | |
| | Cable, USB, 1Ft | 2187007 | |
| | Comm Cable, 6-pin, | 2186998 | |
| | Comm Cable, 8-pin, 52" | 2186997 | |
| | Comm Cable, 8-pin, RJ-45, 16" | 2187006 | |
| | Connector, Tee, Timer Bar | 2198582 | |
| | Coupler, Female, RJ-12, Connects Timer Bar to PHU | 2198603 | |
| | Coupler, Female, RJ-12, Connects Primary PHU to Secondary PHU | 2198597 | |
| | Coupler, Female, RJ-45, Connects Primary PHU to Kitchen Minder | 2198596 | |
| | Cord, NEMA 6-20P, Domestic | 2186993 | |
| | Cordset, Pin/Sleeve, 16A, Export | 2187033 | |
| | Harness, Jumper, AC L | 2187023 | |
| | Harness, Jumper, AC N | 2187022 | |
| | Harness, Jumper, Air Htr, N | 2187024 | |
| | Harness, Jumper Fans | 2187021 | |
| | Harness, ICC to I/O | 2187057 | |
| | Harness, Power, ICC Board | 2198594 | |
| | Input Power Relay | 2195307 | |
| | Timer Bar - See ICC Replacement Parts on page 12 | Varies per Model | |

NOTE: [A] I/O Board must be loaded with software. Starting March 2016, factory will mark the backside with an orange sticker when software is loaded.

MHCFA42EX - Common Components



| Key | Description | Part Number | Note |
|-----|--|-------------------|------|
| 1 | Base Top | 243-CQR-000E | |
| 2 | Baffle Assembly | 000-CRG-000M | |
| 3 | Line Filter | 2190168 | |
| 4 | Jet Plate Assembly, 2 Wide | 000-CRG-0055 | |
| 5 | Tray Seal | 243-CQW-004A | |
| 6 | Lower Heater Tray, EX Models | 3239767 | |
| 7 | Heater Pad, 200Watt, 230V | 2198598 | |
| 8 | Heater Assembly, 230V | 000-CRG-003F | |
| 9 | Fan Motor, 12VDC | 2168517 | |
| 10 | RH Side Cover Panel | 359-CQX-000C | |
| 11 | USB Port Cover | 243-CQR-0019 | |
| 12 | Display Overlay | 1708624 & 1708625 | |
| 13 | PCB Display Board | 000-CZ0-003L-S | |
| 14 | Coupler, Female, RJ12, Connects Timer Bar to PHU | 2198603 | |
| | Coupler, Female, RJ-12, Connects Primary PHU to Secondary PHU | 2198597 | |
| | Coupler, Female, RJ-45, Connects Primary PHU to Kitchen Minder | 2198596 | |
| 15 | Control | 2198580 | |
| 16 | Membrane Switch | 2195357 | |
| 17 | I/O Board Bracket | 418-CQR-000Y | |
| 18 | Power Supply, 12VDC, 30W | 2195354 | |
| 19 | I/O Board | 000-CZ0-003G-S | [A] |
| 20 | Rocker Switch, 250V, 16A | 2195339 | |
| 21 | Hi Temp Leveling Mount | MER340011 | |
| 22 | Tray Insert | MER10001682 | |
| 23 | Plastic Tray, Double Handle | 1708578 | |
| 24 | Tray Seal Support | 243-CQW-0048 | |
| 25 | Jet Plate Cover | 243-CQZ-000P | |
| 26 | Heater Side Bracket, EX Models | 243-CQY-003P | |
| 27 | LH Side Cover Panel | 359-CQX-003B | |
| 28 | LH Panel | 359-CQW-004E | |
| 29 | Baffle Support | 243-CQZ-003D | |
| 30 | Base Top Panel | 243-CQR-000D | |
| 31 | Probe, Air Heater | 2186996 | |
| | Probe, Pad Heater | 2187029 | |
| | Bracket, Timer Bar, 2W | 271-CR8-003B | |
| | Cable, Data, 8", for secondary control boxes | 2187049 | |
| | Cable, USB | 2187007 | |
| | Comm Cable, 6-pin | 2186998 | |
| | Cord, Export | Varies per Model | |
| | Harness, ICC to I/O | 2187057 | |
| | Timer Bar - See ICC Replacement Parts on page 12 | Varies per Model | |

NOTE: [A] I/O Board must be loaded with software. Starting March 2016, factory will mark the backside with an orange sticker when software is loaded.

ICC Replacement Parts

If these parts are needed call ICC Tech Division 631-673-5100 or 877-422-8788.

| Description | ICC Part Number | Merco Part Number |
|--|-----------------|-------------------------|
| A/N 1x4 Timer Bar - Back, Merco | 980105-1x4#-B | 2198617 |
| A/N 1x4 Timer Bar - Front, Merco | 980105-1x4#-F | 2198610 |
| A/N 2x2 Timer Bar, Merco | 980105-2x2# | 2198579 |
| A/N 2x3 Timer Bar, Merco | 980105-2x3# | 2198593 |
| A/N 2x4 Timer Bar, Merco | 980105-2x4# | 2198588 |
| Front Back Connector | 802008 | 2198582 |
| PHU II Hub Control Board, A/N with temp, 2H | 810195-80# | 2198580 |
| PHU II Hub Control Board, A/N with temp, 3x4 | 810195-83# | 2198615 |
| RLGL 1x4 Back Timer Bar | 980242-B | 2198630 |
| RLGL 1x4 Front Timer Bar | 980242-F | 2198621 |
| RLGL 2x2 Timer Bar | 980262 | 2198624 |
| RLGL 2x3 Timer Bar | 980263 | 2198623 |
| RLGL 2x4 Timer Bar | 980240 | 2198620 |
| Secondary PHU A/N Timer Power Supply Board | 810680#-1 | 2198609 |
| Unmodified T-Connector | 633101 | 2198612 |
| Warmer Comm, Adapter | 810004 | 2198611 |

THIS PAGE INTENTIONALLY LEFT BLANK

WWW.WELBILT.COM

Welbilt provides the world's top chefs, and premier chain operators or growing independents with industry leading equipment and solutions. Our cutting-edge designs and lean manufacturing tactics are powered by deep knowledge, operator insights, and culinary expertise. All of our products are backed by KitchenCare[®] – our aftermarket, repair, and parts service.

- ▶ CLEVELAND
- ▶ CONVOTHERM[®]
- ▶ DELFIELD[®]
- ▶ FITKITCHEN[™]
- ▶ FRYMASTER[®]
- ▶ GARLAND
- ▶ KOLPAK[®]
- ▶ LINCOLN
- ▶ MANITOWOC[®]
- ▶ MERCOCO[®]
- ▶ MERRYCHEF[®]
- ▶ MULTIPLEX[®]