

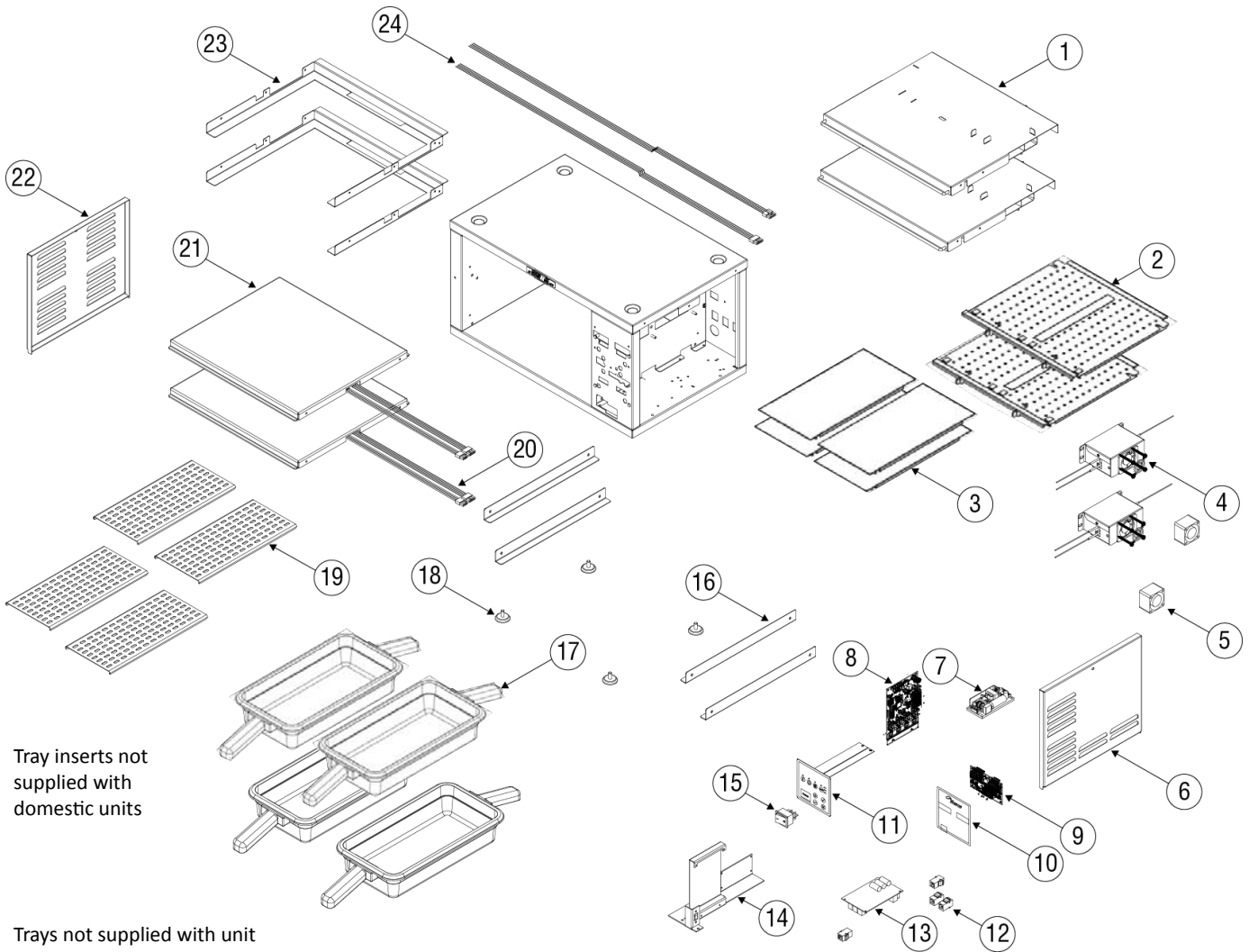
Forced Air Holding Cabinet

Parts List

Contents

MHCFA22 - Common Components	2
MHCFA23 - Common Components	4
MHCFA24 - Common Components	6
MHCFA34 - Common Components	8
MHCFA42EX - Common Components	10
ICC Replacement Parts	12

MHCFA22 - Common Components



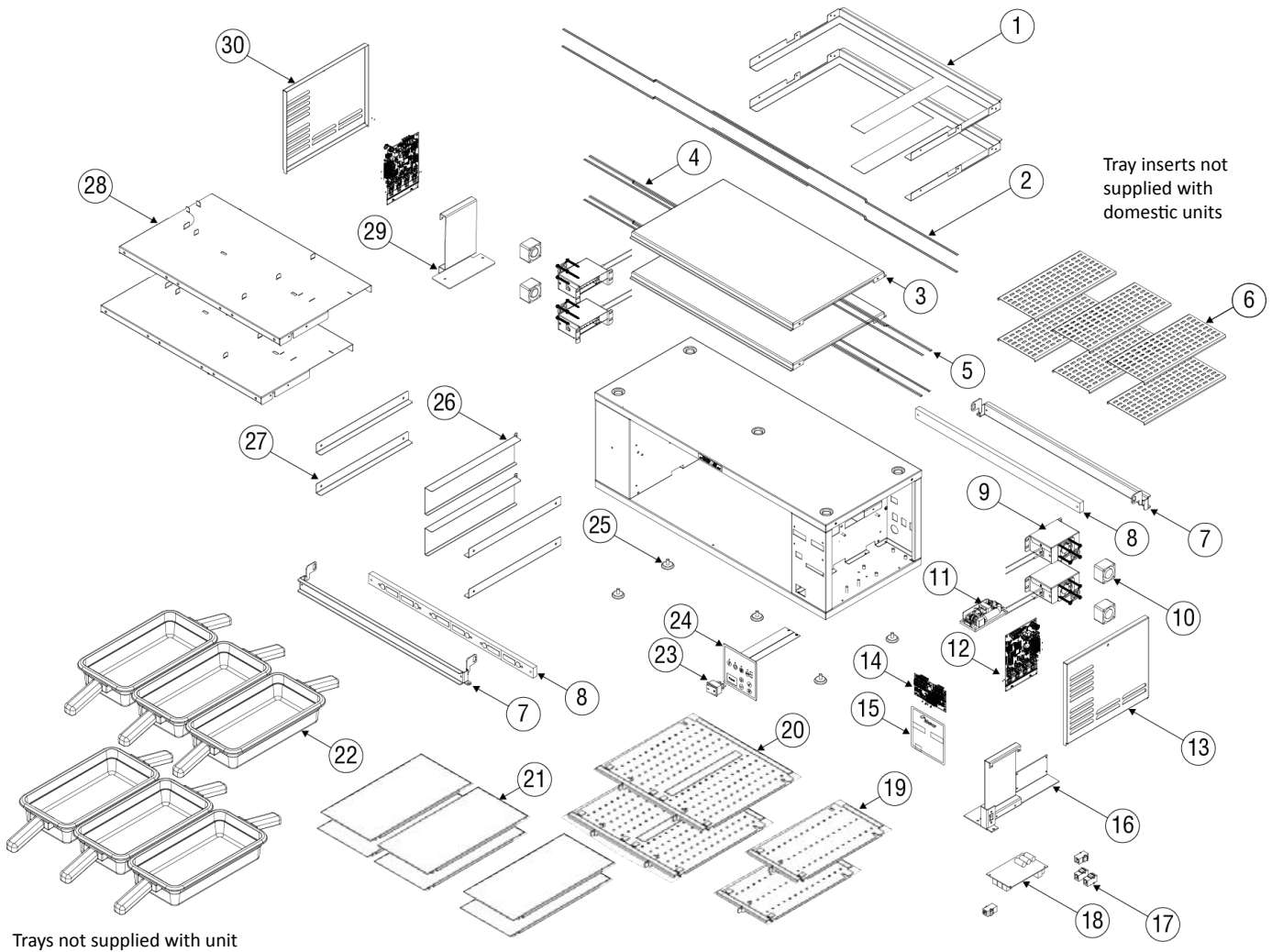
Tray inserts not supplied with domestic units

Trays not supplied with unit

Key	Description	Part Number	Note
1	Baffle Assembly	000-CRG-000M	
2	Jet Plate Assembly, 2 Wide	000-CRG-0055	
3	Tray Seal	243-CQW-004A	
4	Heater Assembly, 120V	000-CRG-0064	
	Heater Assembly, 230V	000-CRG-003D	
5	Fan Motor, 12VDC	2168517	
6	RH Side Cover Panel	359-CQX-0007	
7	Power Supply, 12VDC, 30W	2195354	
8	I/O Board	000-CZ0-003G-S	[A]
9	PCB Display Board	000-CZ0-003L-S	
10	Display Overlay	1708608	
11	Membrane Switch	2195357	
12	Coupler, Female, RJ-12, Connects Timer Bar to PHU	2198603	
	Coupler, Female, RJ-45, Connects Primary PHU to Kitchen Minder	2198596	
13	Control	2198580	
14	I/O Board Bracket	418-CQR-000Y	
15	Rocker Switch, 250V, 16A	2195339	
16	Heater Side Bracket	MER340045	
	Heater Side Bracket, EX Models	243-CQY-003P	
17	Plastic Tray, Double Handle	1708578	
18	Hi Temp Leveling Mount	MER340011	
19	Tray Insert	MER10001682	
20	Heater Pad, 330Watt, 120V	2198616	
	Heater Pad, 330Watt, 230V	2198629	
21	Lower Heater Tray	3239767	
22	LH Side Cover Panel	359-CQX-0032	
23	Baffle Support	243-CQZ-003D	
24	Probe, Air Heater	2186996	
	Probe, Pad Heater	2187029	
	Bracket, Timer Bar, 2W	271-CR8-003B	
	Cable, Data, 8", for secondary control boxes	2187049	
	Cable, USB	2187007	
	Comm Cable, 6-pin	2186998	
	Cord, NEMA 5-20P, Domestic	2186984	
	Cord, Export	Varies per Model	
	Harness, ICC to I/O	2187057	
	Timer Bar - See ICC Replacement Parts on page 12	Varies per Model	

NOTE: [A] I/O Board must be loaded with software. Starting March 2016, factory will mark the backside with an orange sticker when software is loaded.

MHCFA23 - Common Components



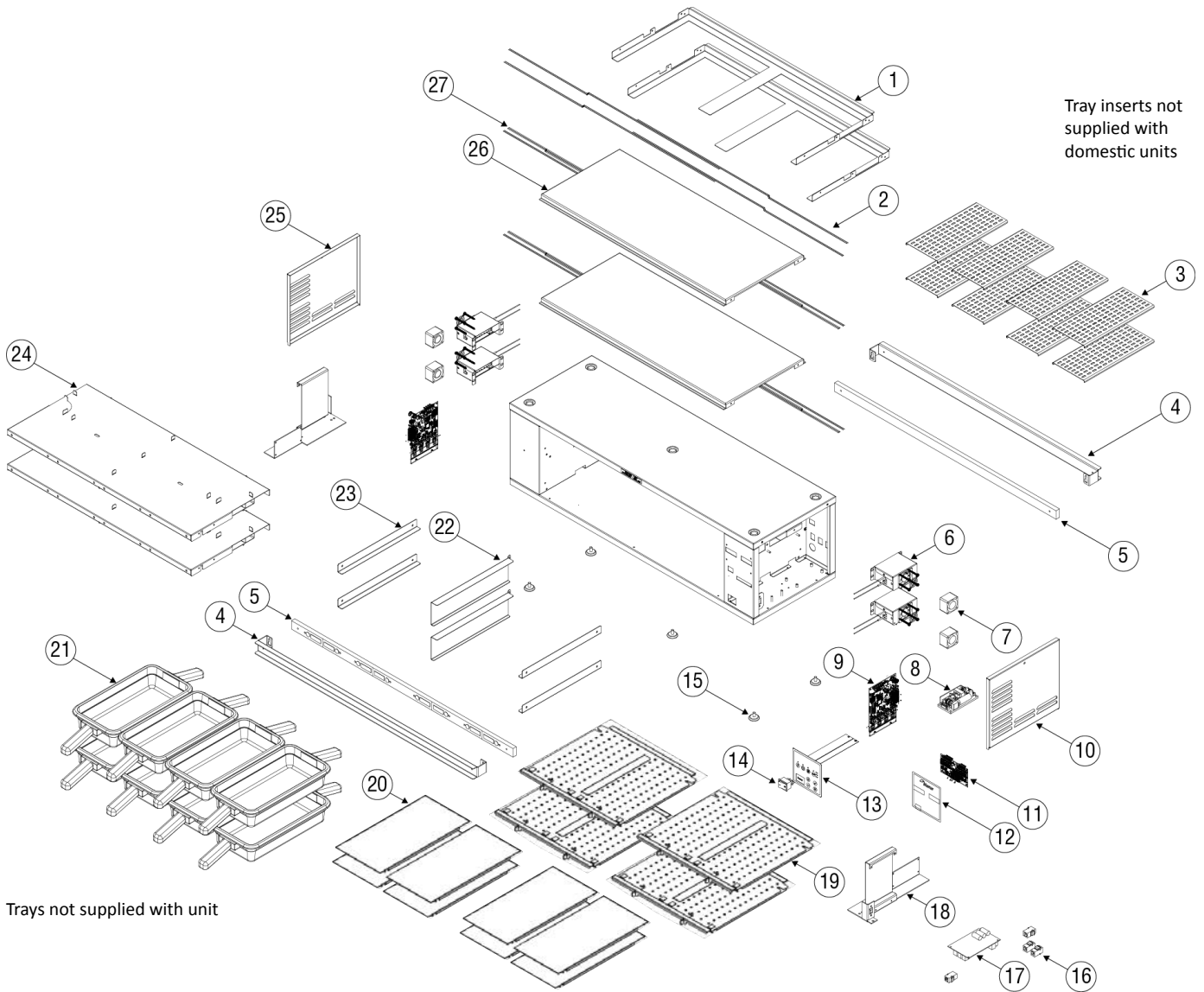
Tray inserts not supplied with domestic units

Trays not supplied with unit

Key	Description	Part Number	Note
1	Baffle Support	243-CQZ-000K	
2	Probe, Air Heater	2186996	
	Probe, Pad Heater	2187029	
3	Lower Heater Tray	3239768	
4	Heater Pad, 200W, 230V	2198598	
5	Heater Pad, 100W, 230V, Single	2198599	
6	Tray Insert	MER10001682	
7	Bracket, Timer Bar, 3W	271-CR8-0039	
8	Timer Bar - See ICC Replacement Parts on page 12	Varies per Model	
9	Heater Assembly, 700W, 230V	000-CRG-003D	
	Heater Assembly, 350W, 230V	000-CRG-003C	
10	Fan Motor, 12VDC	2168517	
11	Power Supply, 12VDC, 30W	2195354	
12	I/O Board	000-CZ0-003G-S	[A]
13	RH Side Cover Panel	359-CQX-0007	
14	PCB Display Board	000-CZ0-003L-S	
15	Display Overlay	1708590	
16	I/O Board Bracket	418-CQR-000Y	
17	Coupler, Female, RJ-12, Connects Timer Bar to PHU	2198603	
	Coupler, Female, RJ-12, Connects Primary PHU to Secondary PHU	2198597	
	Coupler, Female, RJ-45, Connects Primary PHU to Kitchen Minder	2198596	
18	Control	2198580	
19	Jet Plate Assembly, 1 Wide	000-CRG-0015	
20	Jet Plate Assembly, 2 Wide	000-CRG-0055	
21	Tray Seal	243-CQW-004A	
22	Plastic Tray, Double Handle	1708578	
23	Rocker Switch, 250V, 16A	2195339	
24	Membrane Switch	2195357	
25	Hi Temp Leveling Mount	MER340011	
26	Center Divider Support	270-CQZ-004G	
27	Heater Side Bracket	MER340045	
	Heater Side Bracket, EX Models	243-CQY-003P	
28	Baffle Assembly	000-CRG-000F	
29	I/O Board Bracket	418-CQR-000Z	
30	LH Side Cover Panel	359-CQX-000J	
	Cable, Data, 8", for secondary control boxes	2187049	
	Cable, USB, 1 Ft	2187007	
	Comm Cable, 6-pin	2186998	
	Comm Cable, 8-pin, 52"	2186997	
	Cord, NEMA 6-20P, Domestic	2186993	
	Cord, Export	Varies per Model	
	Harness, ICC to I/O	2187057	

NOTE: [A] I/O Board must be loaded with software. Starting March 2016, factory will mark the backside with an orange sticker when software is loaded.

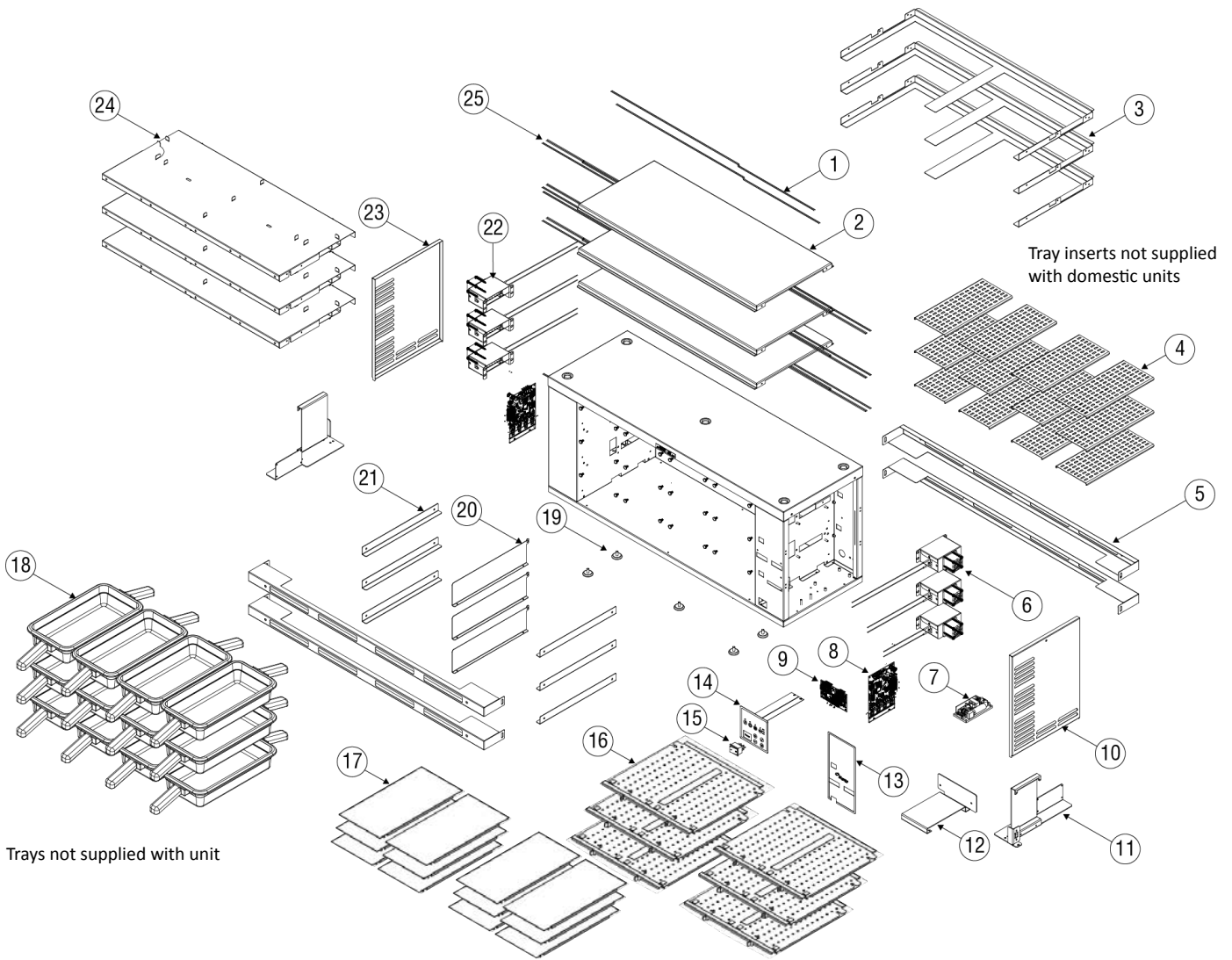
MHCFA24 - Common Components



Key	Description	Part Number	Note
1	Baffle Support	243-CQZ-000F	
2	Probe, Air Heater	2186996	
	Probe, Pad Heater	2187029	
3	Tray Insert	MER10001682	
4	Bracket, Timer Bar, 4W	271-CR8-0037	
5	Timer Bar - See ICC Replacement Parts on page 12	Varies per Model	
6	Heater Assembly, 700W, 230V	000-CRG-003D	
	Heater Assembly, 450W, 230V, EX Models	000-CRG-003F	
7	Fan Motor, 12VDC	2168517	
8	Power Supply, 12VDC, 30W	2195354	
9	I/O Board	000-CZ0-003G-S	[A]
10	RH Side Cover Panel	359-CQX-0007	
11	PCB Display Board	000-CZ0-003L-S	
12	Display Overlay	1708590	
13	Membrane Switch	2195357	
14	Rocker Switch, 250V, 16A	2195339	
15	Hi Temp Leveling Mount	MER340011	
16	Coupler, Female, RJ-12, Connects Timer Bar to PHU	2198603	
	Coupler, Female, RJ-12, Connects Primary PHU to Secondary PHU	2198597	
	Coupler, Female, RJ-45, Connects Primary PHU to Kitchen Minder	2198596	
17	Control	2198580	
18	I/O Board Bracket	418-CQR-000Y	
19	Jet Plate Assembly, 2 Wide	000-CRG-0055	
20	Tray Seal	243-CQW-004A	
21	Plastic Tray, Double Handle	1708578	
22	Center Divider Support	270-CQZ-004G	
23	Heater Side Bracket	MER340045	
	Heater Side Bracket, EX Models	243-CQY-003P	
24	Baffle Assembly	000-CRG-000E	
25	LH Side Cover Panel	359-CQX-000J	
26	Lower Heater Tray	3239769	
27	Heater Pad, 200W, 230V	2198598	
	Cable, 8-pin, Primary	2187006	
	Cable, Data, 8", for secondary control boxes	2187049	
	Cable, USB, 1Ft	2187007	
	Comm Cable, 6-pin,	2186998	
	Comm Cable, 8-pin, 52"	2186997	
	Cord, NEMA 6-20P, Domestic	2186993	
	Cordset, Pin/Sleeve, 16A, Export	2187033	
	Harness, ICC to I/O	2187057	

NOTE: [A] I/O Board must be loaded with software. Starting March 2016, factory will mark the backside with an orange sticker when software is loaded.

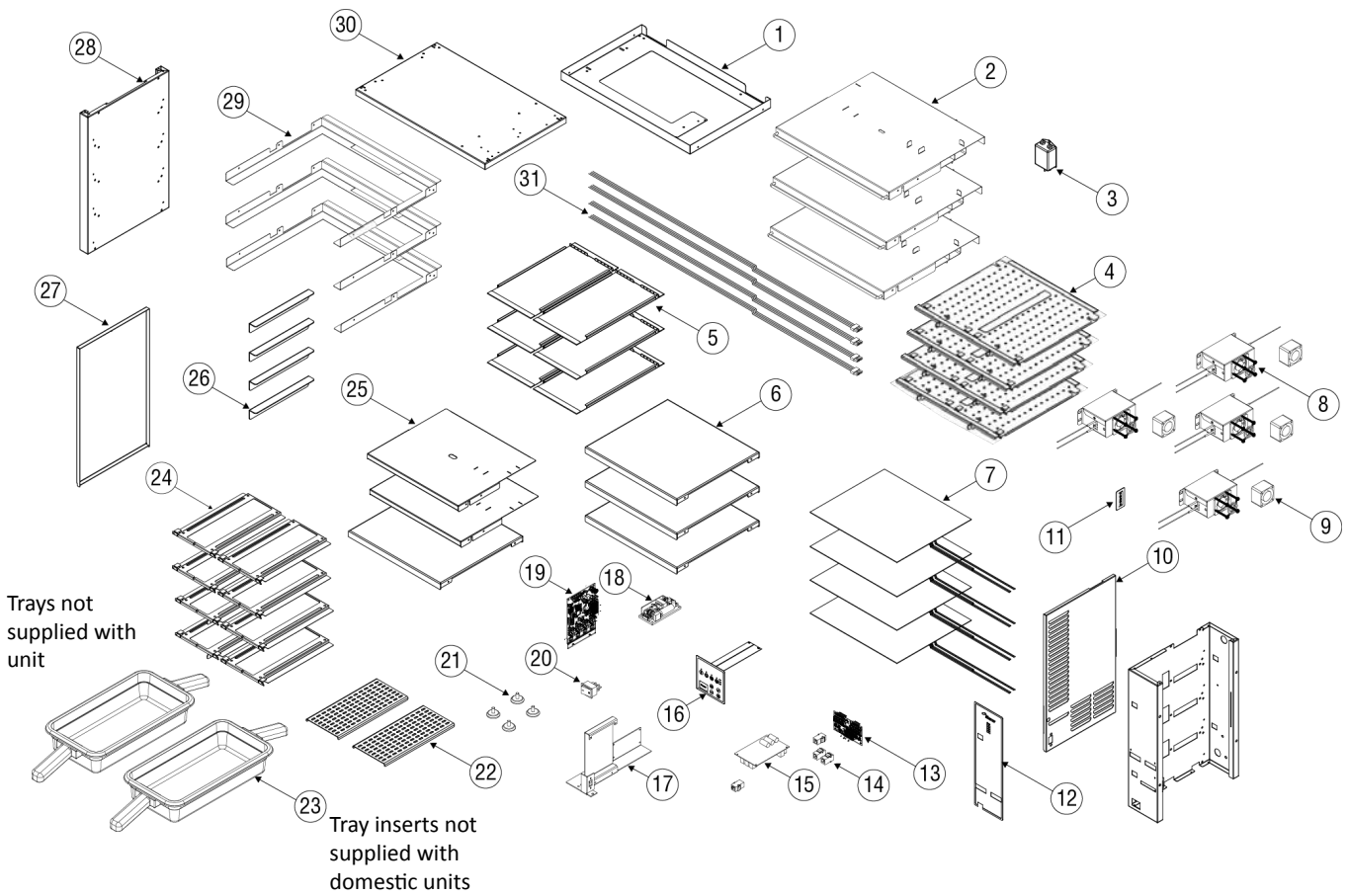
MHCFA34 - Common Components



Key	Description	Part Number	Note
1	Probe, Air Heater	2186996	
	Probe, Pad Heater	2187029	
2	Lower Heater Tray	3239769	
3	Baffle Support	243-CQZ-000F	
4	Tray Insert	MER10001682	
5	Bracket, Timer Bar, 4W	271-CR8-0037	
6	Fan Motor, 12VDC	2168517	
7	Power Supply, 12VDC, 30W	2195354	
8	I/O Board	000-CZ0-003G-S	[A]
9	PCB Display Board	000-CZ0-003L-S	
10	RH Side Cover Panel	359-CQX-0008	
11	I/O Board Bracket	418-CQR-000Y	
12	I/O Board Bracket	418-CQR-000Z	
13	Display Overlay	1708593	
14	Membrane Switch	2195357	
15	Rocker Switch, 250V, 16A	2195339	
16	Jet Plate Assembly, 2 Wide	000-CRG-0055	
17	Tray Seal	243-CQW-004A	
18	Plastic Tray, Double Handle	1708578	
19	Hi Temp Leveling Mount	MER340011	
20	Center Divider Support	270-CQZ-004G	
21	Heater Side Bracket	MER340045	
	Heater Side Bracket, EX Models	243-CQY-003P	
22	Heater Assembly, 450W, 230V	000-CRG-003F	
	Heater Assembly, 350W, 230V, EX Models	000-CRG-003C	
23	LH Side Cover Panel	359-CQX-0009	
24	Baffle Assembly	000-CRG-000E	
25	Heater Pad, 200W, 230V	2198598	
	Heater Pad, 100W, 230V, EX Models	2198628	
	Cable, Data, 8", for secondary control boxes	2187049	
	Cable, USB, 1Ft	2187007	
	Comm Cable, 6-pin,	2186998	
	Comm Cable, 8-pin, 52"	2186997	
	Comm Cable, 8-pin, RJ-45, 16"	2187006	
	Connector, Tee, Timer Bar	2198582	
	Coupler, Female, RJ-12, Connects Timer Bar to PHU	2198603	
	Coupler, Female, RJ-12, Connects Primary PHU to Secondary PHU	2198597	
	Coupler, Female, RJ-45, Connects Primary PHU to Kitchen Minder	2198596	
	Cord, NEMA 6-20P, Domestic	2186993	
	Cordset, Pin/Sleeve, 16A, Export	2187033	
	Harness, Jumper, AC L	2187023	
	Harness, Jumper, AC N	2187022	
	Harness, Jumper, Air Htr, N	2187024	
	Harness, Jumper Fans	2187021	
	Harness, ICC to I/O	2187057	
	Harness, Power, ICC Board	2198594	
	Input Power Relay	2195307	
	Timer Bar - See ICC Replacement Parts on page 12	Varies per Model	

NOTE: [A] I/O Board must be loaded with software. Starting March 2016, factory will mark the backside with an orange sticker when software is loaded.

MHCFA42EX - Common Components



Key	Description	Part Number	Note
1	Base Top	243-CQR-000E	
2	Baffle Assembly	000-CRG-000M	
3	Line Filter	2190168	
4	Jet Plate Assembly, 2 Wide	000-CRG-0055	
5	Tray Seal	243-CQW-004A	
6	Lower Heater Tray, EX Models	3239767	
7	Heater Pad, 200Watt, 230V	2198598	
8	Heater Assembly, 230V	000-CRG-003F	
9	Fan Motor, 12VDC	2168517	
10	RH Side Cover Panel	359-CQX-000C	
11	USB Port Cover	243-CQR-0019	
12	Display Overlay	1708624 & 1708625	
13	PCB Display Board	000-CZ0-003L-S	
14	Coupler, Female, RJ12, Connects Timer Bar to PHU	2198603	
	Coupler, Female, RJ-12, Connects Primary PHU to Secondary PHU	2198597	
	Coupler, Female, RJ-45, Connects Primary PHU to Kitchen Minder	2198596	
15	Control	2198580	
16	Membrane Switch	2195357	
17	I/O Board Bracket	418-CQR-000Y	
18	Power Supply, 12VDC, 30W	2195354	
19	I/O Board	000-CZ0-003G-S	[A]
20	Rocker Switch, 250V, 16A	2195339	
21	Hi Temp Leveling Mount	MER340011	
22	Tray Insert	MER10001682	
23	Plastic Tray, Double Handle	1708578	
24	Tray Seal Support	243-CQW-0048	
25	Jet Plate Cover	243-CQZ-000P	
26	Heater Side Bracket, EX Models	243-CQY-003P	
27	LH Side Cover Panel	359-CQX-003B	
28	LH Panel	359-CQW-004E	
29	Baffle Support	243-CQZ-003D	
30	Base Top Panel	243-CQR-000D	
31	Probe, Air Heater	2186996	
	Probe, Pad Heater	2187029	
	Bracket, Timer Bar, 2W	271-CR8-003B	
	Cable, Data, 8", for secondary control boxes	2187049	
	Cable, USB	2187007	
	Comm Cable, 6-pin	2186998	
	Cord, Export	Varies per Model	
	Harness, ICC to I/O	2187057	
	Timer Bar - See ICC Replacement Parts on page 12	Varies per Model	

NOTE: [A] I/O Board must be loaded with software. Starting March 2016, factory will mark the backside with an orange sticker when software is loaded.

ICC Replacement Parts

If these parts are needed call ICC Tech Division 631-673-5100 or 877-422-8788.

Description	ICC Part Number	Merco Part Number
A/N 1x4 Timer Bar - Back, Merco	980105-1x4#-B	2198617
A/N 1x4 Timer Bar - Front, Merco	980105-1x4#-F	2198610
A/N 2x2 Timer Bar, Merco	980105-2x2#	2198579
A/N 2x3 Timer Bar, Merco	980105-2x3#	2198593
A/N 2x4 Timer Bar, Merco	980105-2x4#	2198588
Front Back Connector	802008	2198582
PHU II Hub Control Board, A/N with temp, 2H	810195-80#	2198580
PHU II Hub Control Board, A/N with temp, 3x4	810195-83#	2198615
RLGL 1x4 Back Timer Bar	980242-B	2198630
RLGL 1x4 Front Timer Bar	980242-F	2198621
RLGL 2x2 Timer Bar	980262	2198624
RLGL 2x3 Timer Bar	980263	2198623
RLGL 2x4 Timer Bar	980240	2198620
Secondary PHU A/N Timer Power Supply Board	810680#-1	2198609
Unmodified T-Connector	633101	2198612
Warmer Comm, Adapter	810004	2198611

THIS PAGE INTENTIONALLY LEFT BLANK

WWW.WELBILT.COM

Welbilt provides the world's top chefs, and premier chain operators or growing independents with industry leading equipment and solutions. Our cutting-edge designs and lean manufacturing tactics are powered by deep knowledge, operator insights, and culinary expertise. All of our products are backed by KitchenCare[®] – our aftermarket, repair, and parts service.

- ▶ CLEVELAND
- ▶ CONVOTHERM[®]
- ▶ DELFIELD[®]
- ▶ FITKITCHEN[™]
- ▶ FRYMASTER[®]
- ▶ GARLAND
- ▶ KOLPAK[®]
- ▶ LINCOLN
- ▶ MANITOWOC[®]
- ▶ MERCO[®]
- ▶ MERRYCHEF[®]
- ▶ MULTIPLEX[®]