

OWNER'S MANUAL

TWO BURNER ELECTRIC HOTPLATE

MODEL: M18HPE



S-54A 05/10



35 Garvey Street • Everett • MA • 02149-4403
Tel: (617) 387-4100 • Toll Free: (866) 698-3188
Fax: (617) 387-4456 (MA and Overseas) • Fax: (800) 227-2659 (Ex. MA)
E-mail: custserv@mfi.com • www.mfi.com

TABLE OF CONTENTS

INTRODUCTION	1
SERVICE CONNECTIONS	1
ILLUSTRATED PARTS.....	2 - 5
MAINTENANCE	5
WIRING DIAGRAM	6

INTRODUCTION

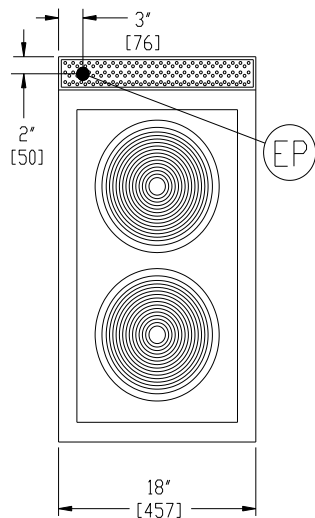
Market Forge Model M18-HPE Electric Two Burner Range mounted on a 28" (711mm) high cabinet base. Heating elements shall be 8.7" diameter (220mm) cast iron surfaces, located front and rear on raised cabinet top. Each element shall be 2.6 KW (5.2 KW total).

Infinity controls with individual pilot lights shall be mounted on front of raised cabinet top.

Polished stainless steel cabinet base 18" (457mm) wide shall be of modular design to match other Market Forge cooking equipment. Shall be equipped with 6" (152mm) stainless steel legs and adjustable bullet feet, and a hinged door with magnetic latch.

OPERATION SHALL BE BY:

- 208 VAC, 60Hz, Three/Single Phase
- 240 VAC, 60 Hz, Three/Single Phase

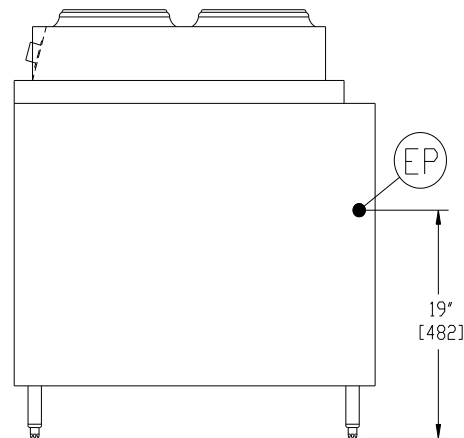
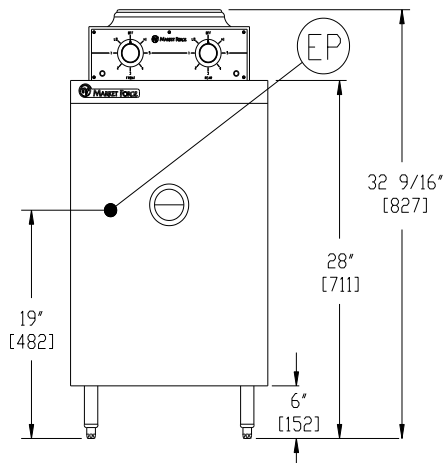


SERVICE CONNECTIONS

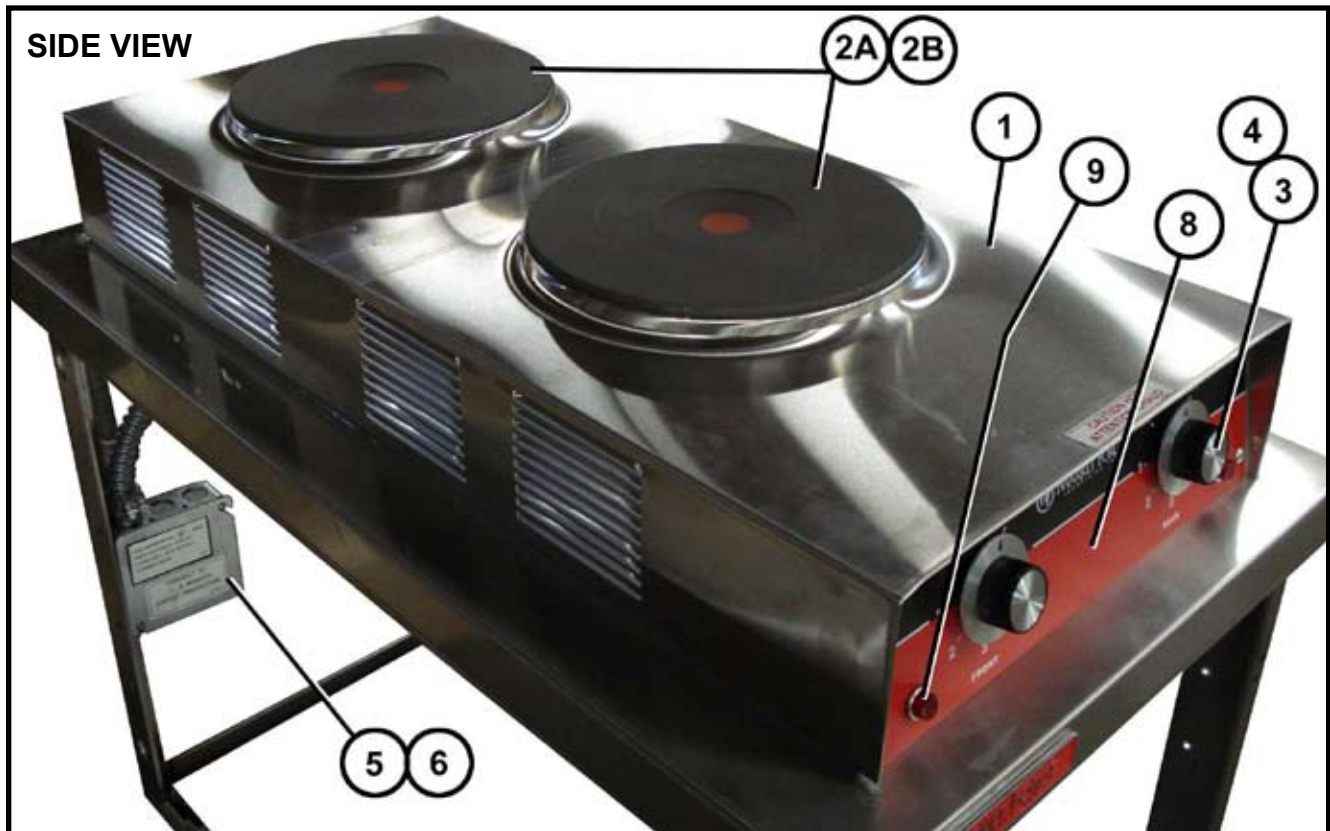
Electrically Operated

EP Power Supply -Use wire suitable for at least 90°C. Unit supplied for 3-Phase operation, may be converted to 1-Phase. All models rated at 5.2KW (2.6KW each Element). Nominal amp per line wire.

Voltage	Line 1	Line 2	Line 3
208V, 1-Phase	25	25	--
240V, 1-Phase	21.7	21.7	--
208V, 3-Phase	25	12.5	12.5
240V, 3-Phase	21.7	10.9	10.9



ILLUSTRATED PARTS



ILLUSTRATED PARTS

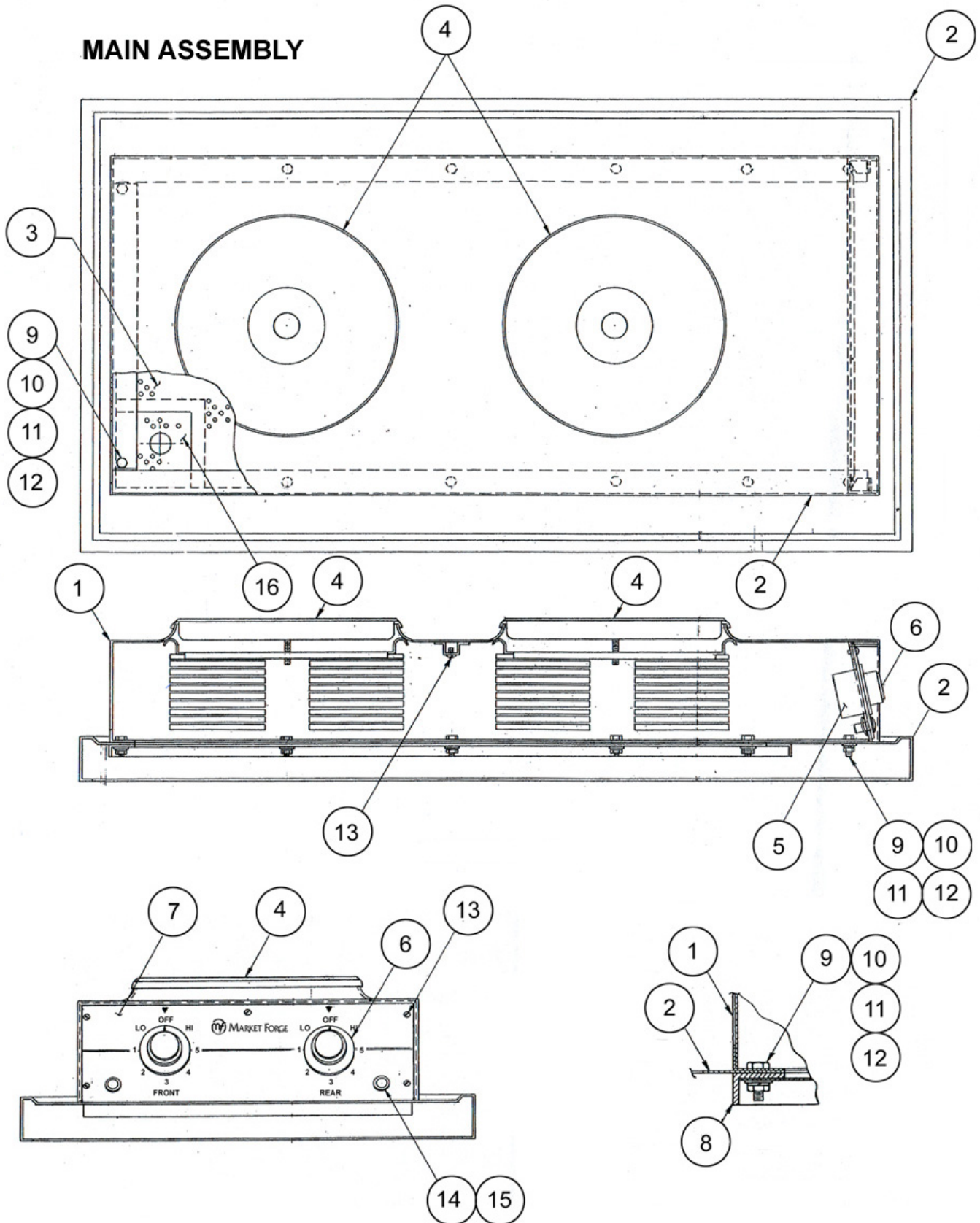
SIDE VIEW & CONTROL PANEL

ITEM NO.	PART NO.	DESCRIPTION
1	91-1200	CABINET TOP W / EXT. ASSEMBLY
2A	09-6589	HOTPLATE – 2600W, 208V
2B	09-6590	HOTPLATE – 2600W, 240V
3	10-5992	CONTROL SWITCH
4	09-5259	CONTROL KNOB
5	10-5067	HANDY BOX
6	10-5068	HANDY BOX COVER
7	SUPPLIED W / ELEMENT	HOLD-DOWN BRACKET
8	10-8271	CONTROL PANEL
9	10-6669	INDICATOR LAMP, 250V, 1/3W
★	10-5170	STRAIGHT CONNECTOR
★	10-5168	BUSHING
★	10-2541	SPEED NUT
★	10-1849	#6-32 x ½ LG., RD., HD., MACH., SCREW
★	10-2515	#6 LOCK WASHER
★	10-2337	#6-32 HEX NUT
★	91-1206	CONDUIT ASSEMBLY
★	10-5220	GROUND LUG
★	10-5503	TERMINAL BLOCK
★	10-5070	TERMINAL END BLOCK

★NOT SHOWN

ILLUSTRATED PARTS

MAIN ASSEMBLY



ILLUSTRATED PARTS

MAIN ASSEMBLY

ITEM NO.	PART NO.	DESCRIPTION
1	91-1209	ASSEMBLY, WELDMENT HOTPLATE TOP
2	91-3574	TOP COUNTER
3	91-1221	SHIELD PROTECTIVE, ROUND
4	09-6589	HOTPLATE, 208V, 2600W, ROUND
4	09-6590	HOTPLATE, 240V, 2600W, ROUND
5	10-5992	SWITCH, INFINITE HEAT, 10W-15AMP
6	09-5259	KNOB, SWITCH
7	10-8271	PLATE, NAME, CONTROL PANEL
8	91-1225	STIFFENER, FRAME
9	10-2045	SCREW, CAP, HEX HEAD #10-32 x 5/8 LONG
10	10-2341	WASHER, PLAIN #10
11	10-2509	WASHER, LOCK #10
12	10-2339	NUT, HEX #10-32
13	10-1761	SCREW, MACH, TRUSS, HEAD #8-32 x 3/8 LONG
14	10-5016	LAMP, INDICATOR
15	10-2541	NUT, SPEED
16	91-3544	SHIELD, PROTECTIVE, LH CORNER

MAINTENANCE

WARNING

DO NOT HOSE DOWN UNIT AS IT CONTAINS ELECTRICAL COMPONENTS.

STAINLESS STEEL:

All stainless steel body parts should be wiped regularly with hot soapy water during the day and with a liquid cleaner designed for this material at the end of each day. DO NOT USE steel wool, abrasive cloth, or powders to clean stainless surfaces. If it is necessary to scrape stainless steel to remove encrusted materials, soak in hot water to loosen the material, then use a wood or nylon scraper. DO NOT USE a metal knife, spatula, or any other metal tool to scrape stainless steel.

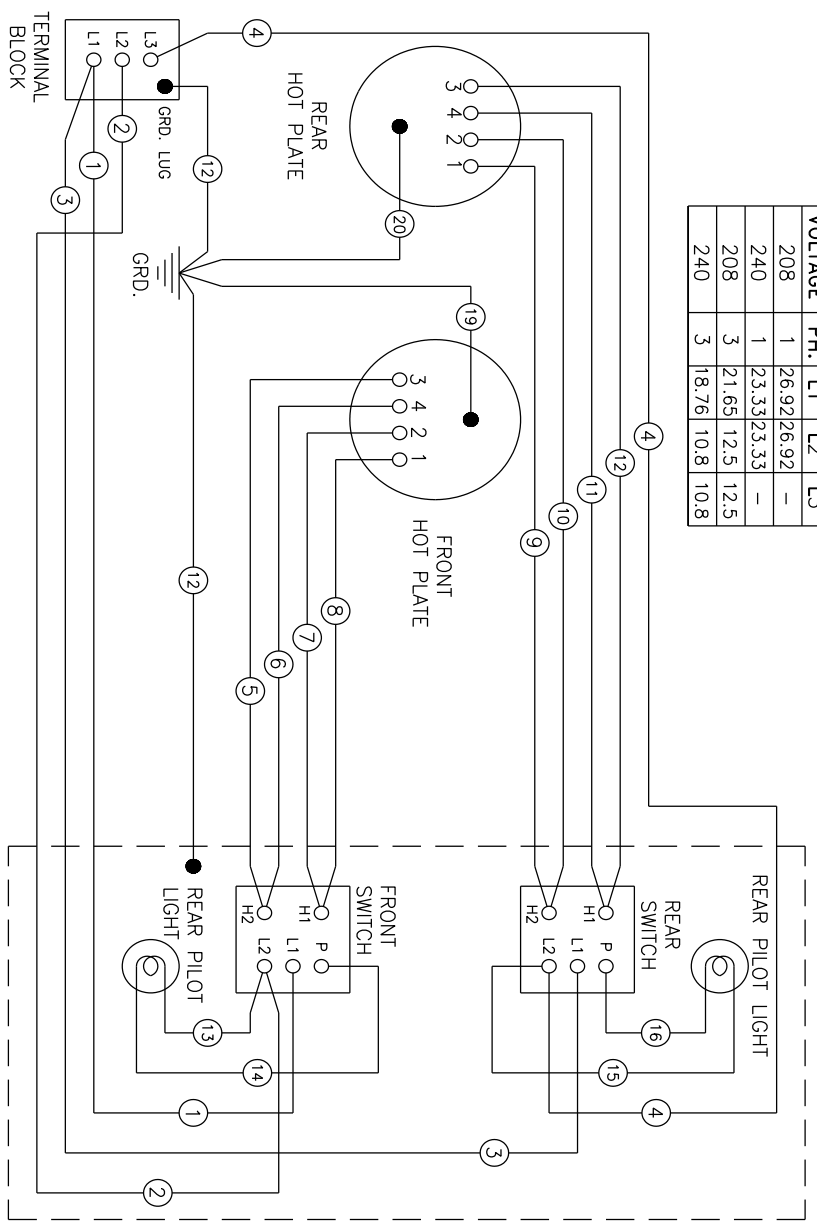
ENAMELED ROUND HOTPLATE SURFACE:

Use a sponge in soapy water or degreasing product applied with a soft cloth. DO NOT use any abrasive and avoid excessive or harsh rubbing when cleaning which can cause damage to the enameled finish.

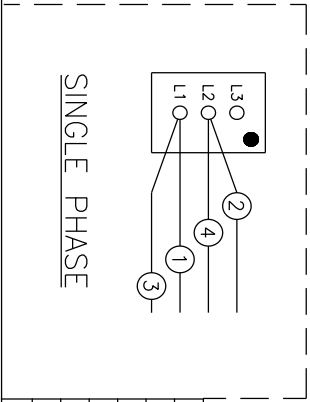
CAUTION: DO NOT allow metal, cast iron, or brass polish/cleaners to come in contact with the enameled round hotplate surface. The chemicals will cause permanent damage to the enameled surface.

REV. 0121-16 B

AMPS. PER LINE				
VOLTAGE	PH.	L1	L2	L3
208	1	26.92	26.92	-
240	1	23.33	23.33	-
208	3	21.65	12.5	12.5
240	3	18.76	10.8	10.8



SYM	DATE	REV\EDM#	BY
F	03/30/07	REDRAWN ON CAD. ECN 00000	AJD



USED ON	TOLERANCES UNLESS OTHERWISE SPECIFIED
	FRACTIONS ± 1/16
	0 ± .032
	.00 ± .015
	.000 ± .005
	ANGLES - + 1°

DC-SUBMISC - MARKET FORCE SPECIFICATION#127
 CLASS I CLASS II CLASS III

MARKET FORCE

EVERETT, MA. 02149

WIRING DIAGRAM - ELECTRIC HOT PLATE
 208V - 240V, SINGLE & 3 PHASE

DATE 03/30/07 DRAWN AJD CHECKED NONE SCALE NONE

ENG. APP. B 91-1210 F

AUTOCAD FILE NAME: 911210