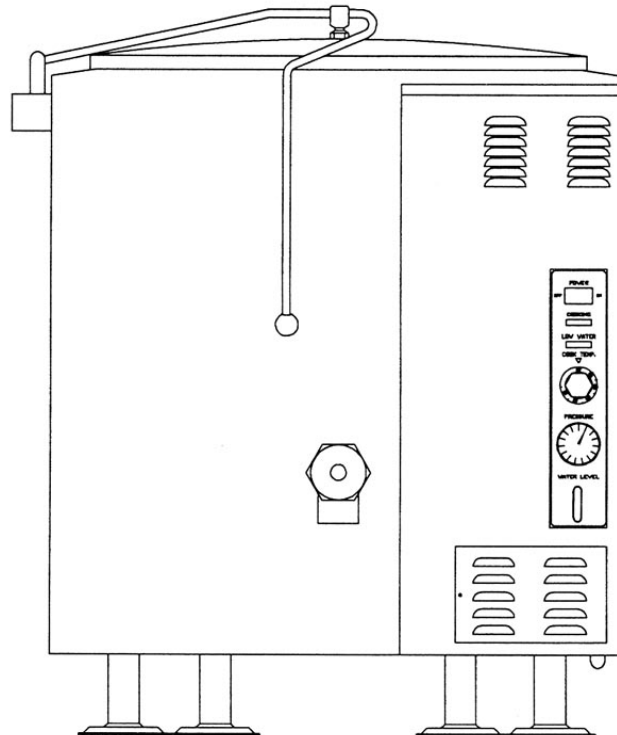


PARTS LIST

GAS KETTLES



35 Garvey Street, Everett, MA 02149
Tel: (617) 387-4100, (866) 698-3188
Fax: (617) 387-4456, (800) 227-2659
Parts & Service: (888) 259-7076
Custserv@mfii.com, www.mfii.com

Form S-1923

Rev. B 11/07

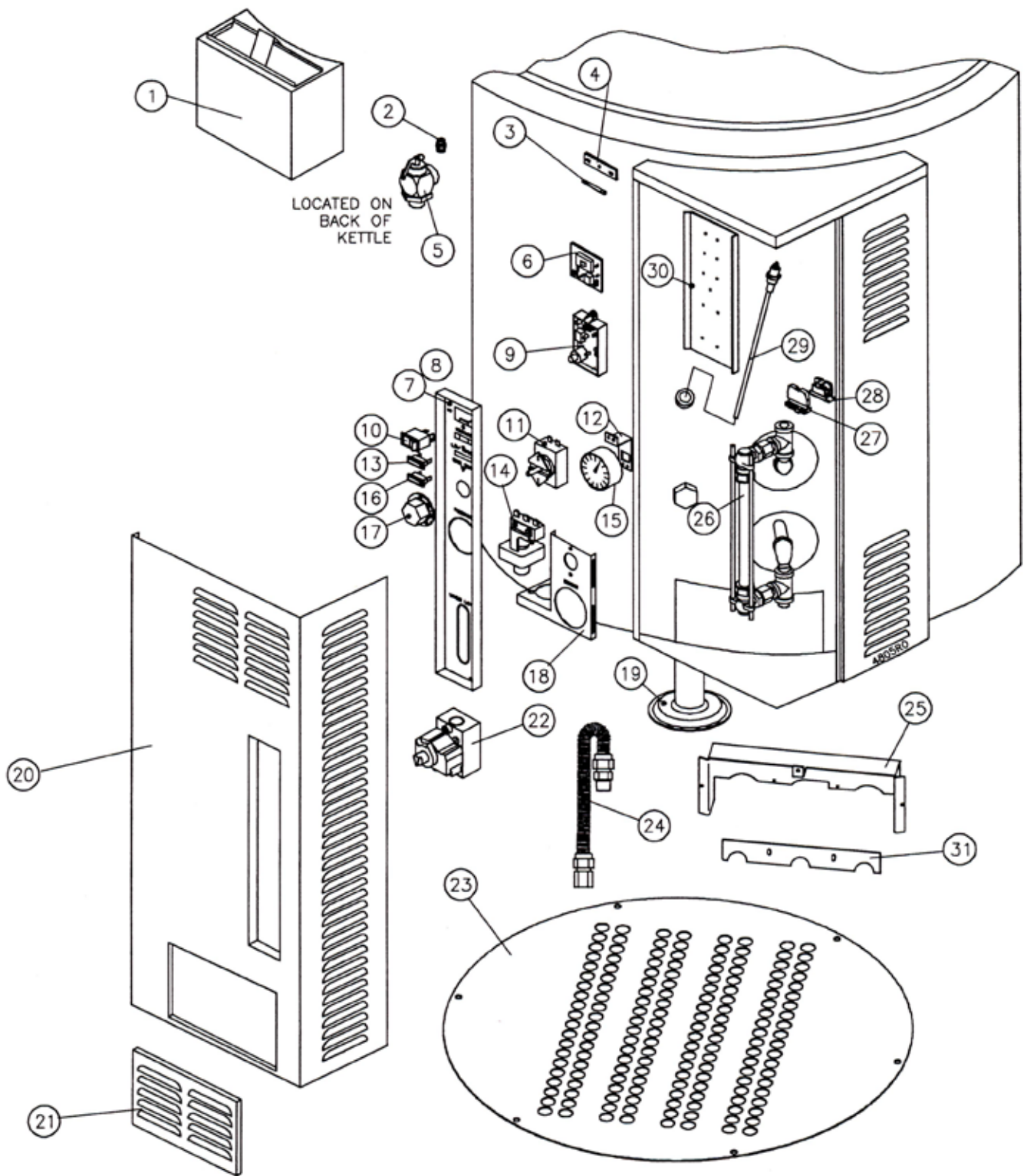


Figure 1 Master Assembly

FIGURE 1 MASTER ILLUSTRATION

ITEM NO.	MF PARTS	DESCRIPTION	
1	97-5673	Flue box assembly	
2	97-5415	Air vent	
3	97-5476	Fuse 3A, 250V	
4	~NPN~	Fuse holder	
5	97-5045	Relief valve, 35 PSI	
6	97-5565	Level control	
7	97-5474	Control panel	
** 8	~NPN~	English label	
	~NPN~	French label	
9	97-6195	Ignition module wire-set	
10	~NPN~	Power switch	
11	97-5427	Thermostat	
12	97-5679	Support bracket	
13	~NPN~	Pilot light, cooking, red	
14	97-5437	Pressure switch	
15	~NPN~	Pressure gauge	
16	~NPN~	Pilot light, low water, amber	
17	97-5339	Dial	
18	~NPN~	Support bracket	
19	97-5032	Adjustable foot	
20	97-5693	Front panel	
	97-5694	Front panel	
21	~NPN~	Access door	
** 22	97-6461	Combination gas control - Natural	
	97-6462	Combination gas control - Propane	
23	~NPN~	Bottom cover	
24	~NPN~	Gas flex hose, 3/4" x 18"	
25	~NPN~	Burner basket shield/bracket	
26	97-5850	Sight glass assembly	
*	~NPN~	Gauge glass, 5/8" x 4 3/4"	
*	~NPN~	Washers	
	~NPN~	Brass washer	
	~NPN~	Rod	
27	10-6962	Terminal block end section	
28	10-6963	Terminal block section	
29	97-5338	Low water probe	
30	~NPN~	Component mounting bracket	
31	~NPN~	Burner shield	
* 32	97-5702	Cord set, 115V	
* 33	~NPN~	Faucet bracket, optional	
** 34*	98-6138	Transformer, 240/120, 100V (220-240V units)	

* Not Shown.

** Select as required.

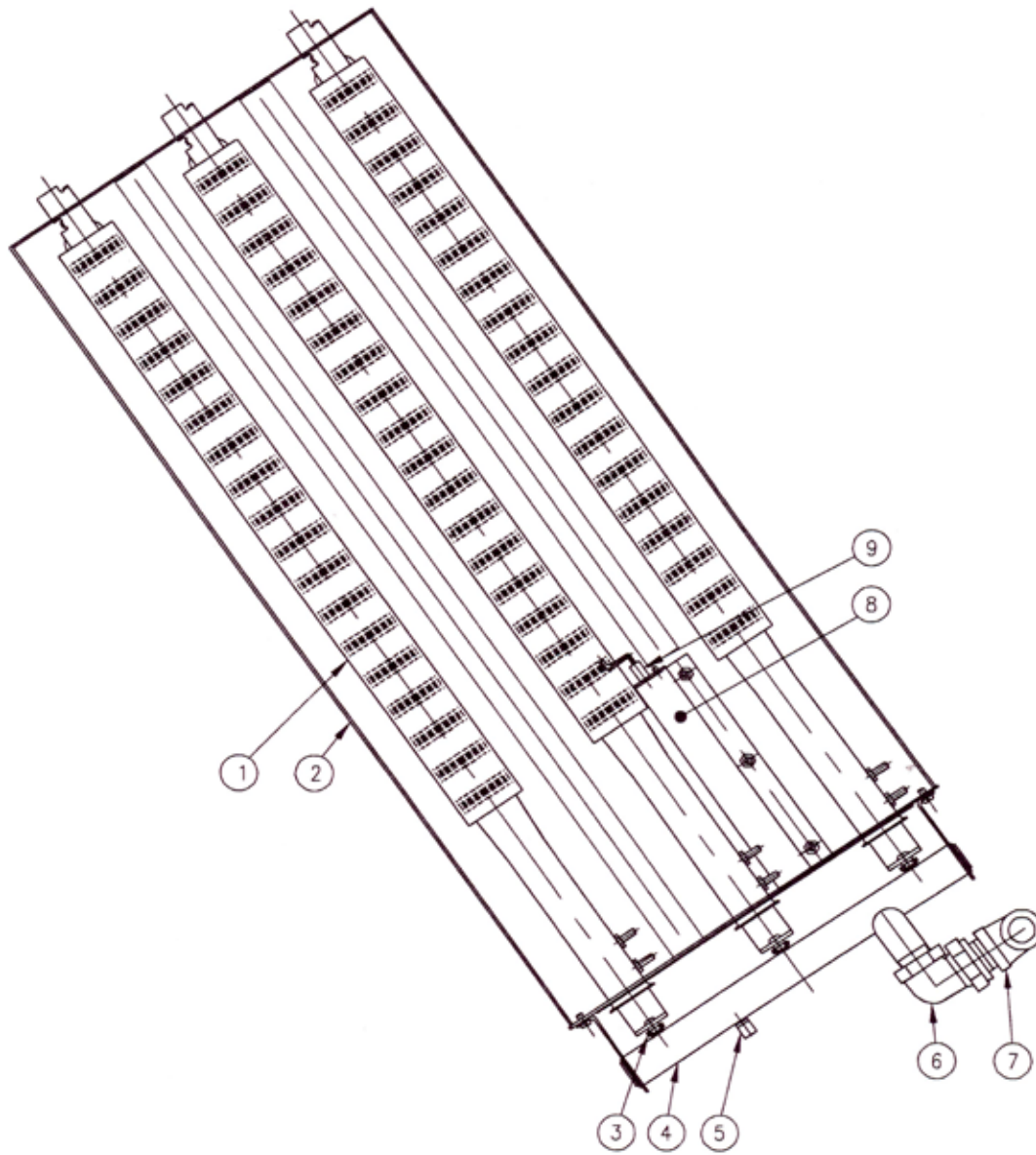


FIGURE 2 BURNER ASSEMBLY

ITEM NO.	MF PARTS	DESCRIPTION	QTY.
1	97-5482	Burner	3
2	~NPN~	Burner tray	1
** 3	~NPN~	Orifice #44 propane	3
	~NPN~	Orifice #29 natural gas	3
4	~NPN~	Manifold	1
5	98-6124	Plug 1/8"	1
6	~NPN~	Union elbow 3/4"	1
7	97-5555	Reducing elbow 1/2 x 3/4"	1
8	~NPN~	Ignitor / sensor bracket	1
9	98-6199	Ignitor / sensor	1

** Select as required.

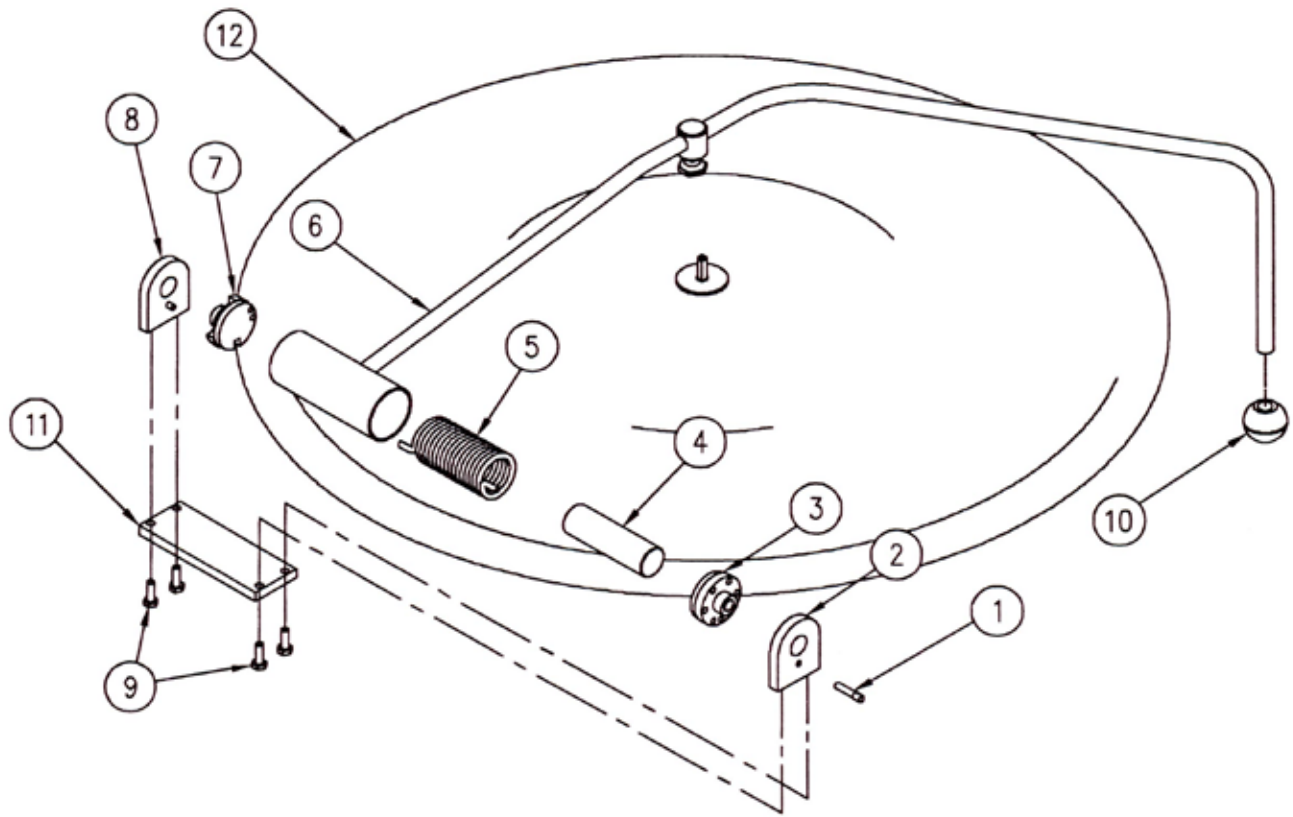


FIGURE 3 LID ASSEMBLY

ITEM NO.	MF PARTS	DESCRIPTION	QTY.
	97-5530	Hinge assembly	
1	97-5352	Lock pin	1
2	97-5343	End lock plate	1
3	98-6073	Stationary disc	1
4	98-6074	Core	1
5	97-5160	Spring	1
6	~NPN~	Handle assembly	1
7	97-6391	Rotary disc	1
8	97-5356	End stop plate	1
9	97-6392	Cap screws	4
10	97-5008	Knob	1
11	~NPN~	Mounting plate	1
12	~NPN~	Cover	1

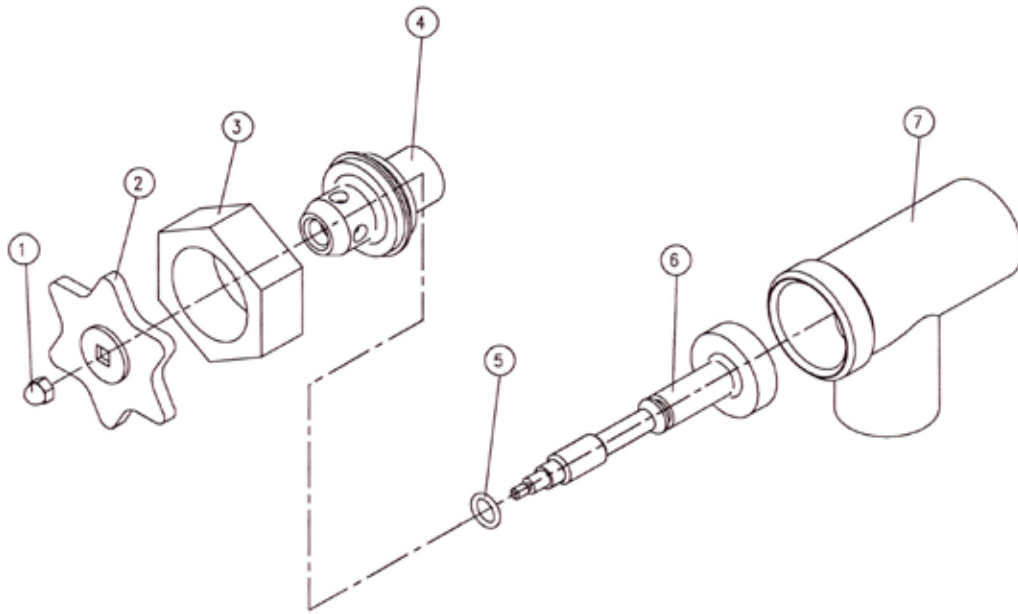
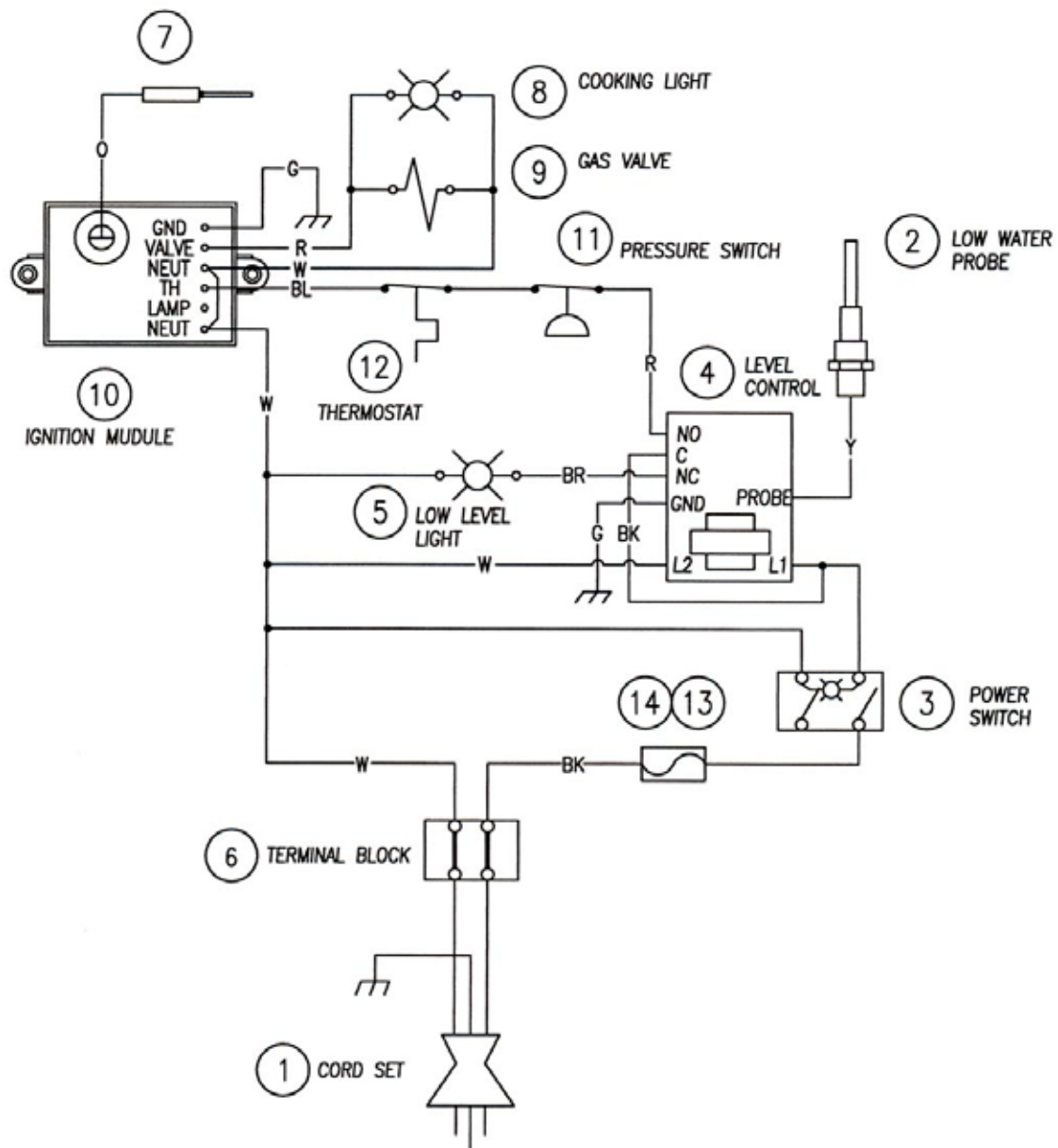


FIGURE 4 DRAW-OFF VALVE

ITEM NO.	MF PARTS			DESCRIPTION	QTY.
	1 1/2"	2"	3"		
--	97-5062	97-5063	97-5605	Draw-off valve assy.	1
1	98-6155	98-6155	97-5066	Acorn nut 10-24	1
2	97-5566	97-5566	97-5067	Handle	1
3	97-5068	97-5069	97-5070	Gland nut	1
4	97-5071	97-5075	97-5073	Bonnet	1
5	97-5077	97-5078	97-5079	O-Ring	1
6	97-5075	97-5075	97-5076	Steam assy.	1
7	97-6496	98-6156	97-6497	Valve body	1

FIGURE 5 WIRING DIAGRAM

ITEM NO.	MF PARTS	DESCRIPTION	QTY
1	97-5702	Cord set HJO 18/3, 125v	1
2	~NPN~	Low water probe	1
3	~NPN~	Power switch	1
4	97-5565	Level control	1
5	97-6389	Low level light, amber	1
6A	10-6963	Terminal block	1
6B	10-6962	Terminal block end	1
7	~NPN~	Ignitor / sensor	1
8	~NPN~	Cooking light, red	1
9	97-5808	Gas valve, natural (optional)	1
9	97-5809	Gas valve, propane (optional)	1
10	97-5960	Ignition module	1
11	~NPN~	Pressure switch	1
12	97-5427	Thermostat	1
13	97-5476	Fuse, 3amp 250V	1
14	~NPN~	Fuse holder	1



ALL CONDUCTORS 16 AWG
SF2 OR SEW 200°C

REVISIONS				UNLESS OTHERWISE SPECIFIED DIMENSIONS ARE IN INCHES TOLERANCES ARE: FRACTIONS DECIMALS ANGLES ± .XX ± ± ± .XXX ± ±			PART NO. SCALE 1:1 W/D/Y		Market Forge Ind., Inc.		
0	VC	10.18.05	ERN-977	DESIGNED	VC	10.18.05		GAS-FIRED KETTLES W/LINE VOLTAGE ELECTRONIC IGNITION AND SOLID STATE LEVEL CONTROL 120V 50/60Hz			
NO.	BY	DATE	DESCRIPTION	CHECKED				DRAWING NO.	1G-00023	SIZE A	REVISION 0
				PROJECTION							
				DO NOT SCALE DRAWING							

Figure 5 Wiring Diagram