

# Manitowoc®

## ICE MACHINES

### INSTALLATION INSTRUCTIONS

**MODELS:**  
 GR-1701W  
 GD-1703W  
 GY-1705W  
 GR-1790N  
 GD-1792N  
 GY-1794N

This product qualifies for the following listings:



**KEEP THESE INSTRUCTIONS WITH THE OWNER/OPERATOR USE AND CARE GUIDE FOR  
FUTURE REFERENCE**

### GENERAL SAFETY PRECAUTIONS

The ice machine must be installed according to these Installation Instructions.

Connection to water service, drains, electrical service and grounding must comply with applicable local and state codes.

Disconnect electrical service before servicing.

Read and understand all instructions before placing the ice machine into service.

### GENERAL

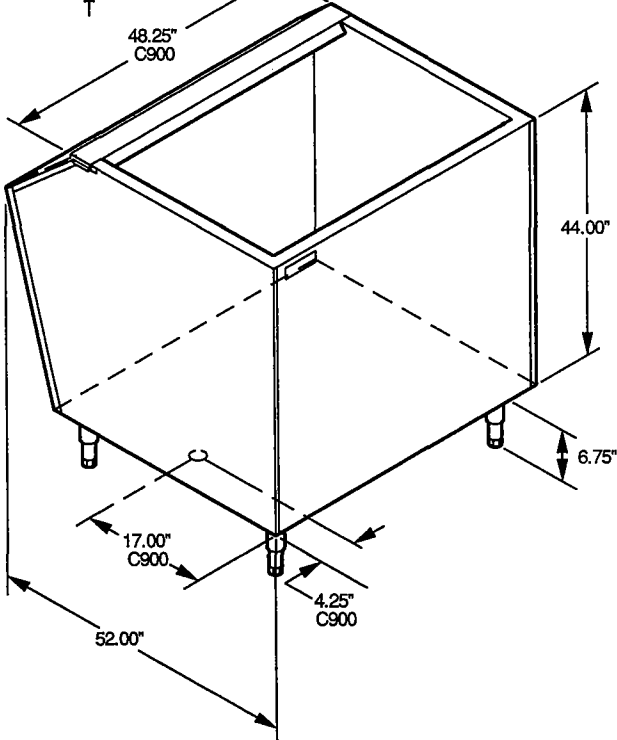
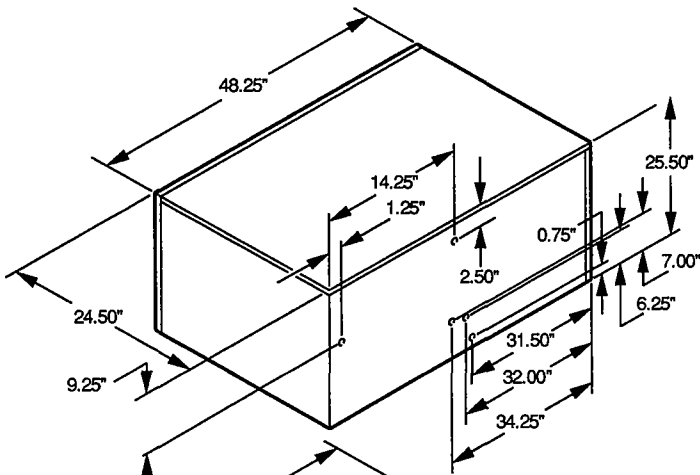
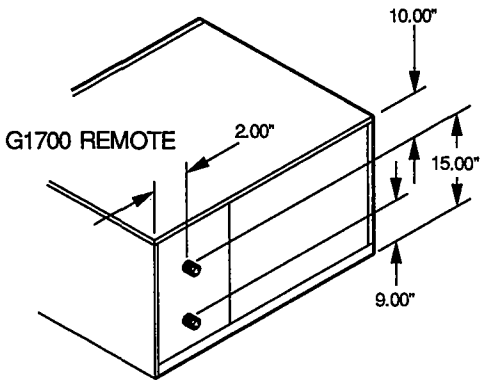
The installation instructions are provided to assist the qualified installer. Check the yellow pages of your local telephone book for Manitowoc Ice Machine Distributor, or call Manitowoc Ice, Inc. for information regarding installation and start-up services available.

If any problem is encountered that is not covered by this manual, please contact your local Manitowoc Distributor or Manitowoc Ice, Inc. for assistance.

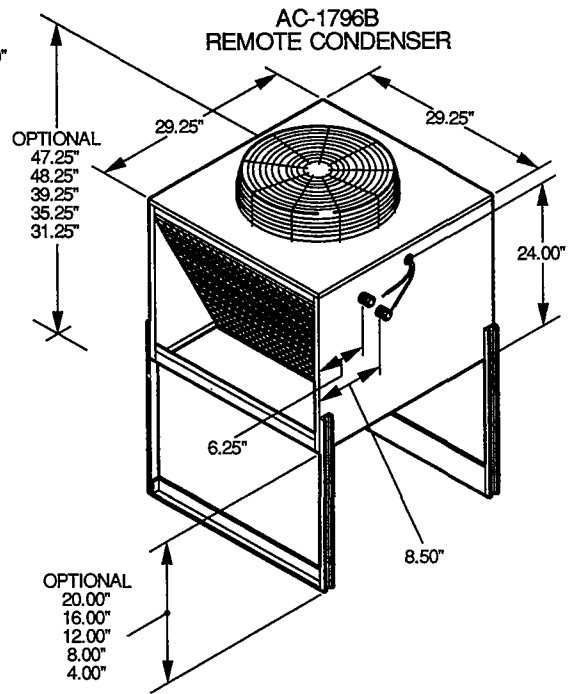
### TABLE OF CONTENTS

General Safety Precautions . . . . .	1
General . . . . .	1
Dimensions . . . . .	2
Specifications . . . . .	3
Freight Damage and Claims Procedures . . . . .	3
Unpacking Cartons . . . . .	4
Location of Ice Machine . . . . .	4
Ice Machine Heat of Rejection . . . . .	4
Mounting Single Ice Machine on Storage Bin . . . . .	4
Mounting Two Ice Machines on Storage Bin . . . . .	5
Electrical Service . . . . .	5
Voltage . . . . .	5
Fuse/Circuit Breaker . . . . .	5
Minimum Circuit Ampacity . . . . .	5
Connection at Self-Contained Ice Machine . . . . .	6
Water Service/Drains . . . . .	7
Water Supply . . . . .	7
Inlet Water Connections . . . . .	8
Drain Connections . . . . .	8
Water-Cooled Models (Cooling Tower Applications) . . . . .	8
Remote Ice Machine Installation . . . . .	8
General Information . . . . .	8
Ice Machine Set-up . . . . .	9
Remote Air Condenser Assembly . . . . .	9
Location of Remote Condenser . . . . .	10
Routing of Line Sets . . . . .	10
Connection of Line Set . . . . .	11
Remote Ice Machine Electrical Hook-Up . . . . .	12
Single Circuit Condensers, AC Models . . . . .	12
Receiver Service Valve . . . . .	12
Installation Check List . . . . .	13
Additional Ice Machine Checks for Remote Models . . . . .	13
Before Starting Ice Machine . . . . .	13

# DIMENSIONS



C900 BIN SHOWN



mi/3282.006/00

## SPECIFICATIONS

DIMENSIONS		ELECTRICAL REQUIREMENTS (Cont.)	
Length	48.25 in.	Fuse/Circuit Breaker	
Width	24.50 in.	Water-Cooled	
Height	25.50 in.	1 phase	35 amp
ELECTRICAL REQUIREMENTS		3 phase	25 amp
Voltage	208/230 volts	Remote	
Hertz	60 Hertz	1 phase	40 amp
Phases	1 or 3 phase	3 phase	25 amp
Circuit Ampacity (Minimum)		WATER REQUIREMENTS	
Water-Cooled		Temperature	
1 phase	29.5 amp	Minimum	33°F
3 phase	17.5 amp	Maximum	90°F
Remote		Pressure	
1 phase	33.2 amp	Minimum	20 psi
3 phase	20.0 amp	Maximum	80 psi

## FREIGHT DAMAGE AND CLAIMS PROCEDURES

### 1. SHORTAGES

Check number of cartons delivered against the quantity shown on your receipt. If quantities do not tally, have driver note shortage and file your claim with the freight company.

### 2. NO-FAULT FREIGHT CLAIM PROCEDURE

Manitowoc assumes responsibility for all freight damage claims involving participating carriers with the following exceptions:

- When the trucking company loses the equipment.
- When fire destroys the equipment en route.
- When a traffic accident damages the shipment en route.

### 3. VISIBLE DAMAGE

- If cartons appear damaged in any way, open the carton and inspect contents in the presence of the driver.

- To remove the ice machine carton, cut the banding on the bottom only (in case the ice machine needs to be reboxed) and slide the carton up and off the ice machine.
- Note the nature and extent of the damage on the freight bill.
- Notify your local Manitowoc distributor to inspect the merchandise within 15 days of delivery. Do not attempt to repair the damage.

### 4. CONCEALED DAMAGE

- If damage is noticed at the time of installation, notify the distributor immediately and ask to have the equipment inspected.
- Do not destroy packing materials until inspection is completed.
- These conditions must be met before your claim can be processed by the distributor.

### 5. CLAIMS

Manitowoc Ice, Inc. and the selling Distributor will arrange to repair or replace the equipment.

## UNPACKING CARTONS

1. ICE MACHINE
  - a. Cut bottom band on the carton.
  - b. Lift the carton up and off of the ice machine.
2. STORAGE BIN
  - a. Cut the banding on the top of the carton.
  - b. Remove carton top.
  - c. Remove the cardboard packing inside and place on the floor.
  - d. Tip the carton on its back and slide the bin out onto the cardboard packing to protect the bin from being scratched.
  - e. Screw the leveling legs onto the bottom of the bin and screw the "foot" of each leg in as far as possible, Figure 1. Set the bin upright.

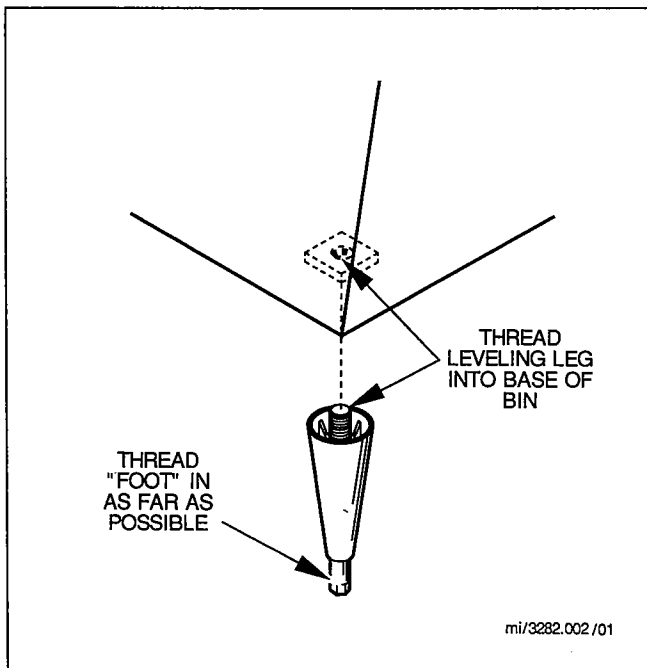


FIGURE 1. LEG INSTALLATION

## LOCATION OF ICE MACHINE

### CAUTION

We do not recommend that this ice machine be installed in an area where the air temperature falls below 35°F or exceeds 110°F. If the ice machine will be subjected to below freezing temperatures, it must be protected. See REMOVAL FROM SERVICE/WINTERIZATION in the Owner/Operator Use and Care Guide.

Select a location away from heat generating equipment and direct sunlight. Manitowoc ice machines operate most efficiently when:

- LOCATED IN A CONTAMINANT FREE AREA.
- INSTALLED WITH A MINIMUM OF FIVE INCHES OF CLEARANCE AT SIDES AND REAR — Adequate air flow through and around the ice machine is essential to maximum ice production and long component parts life.

## ICE MACHINE HEAT OF REJECTION

Ice machines, like other refrigeration equipment, reject heat through the condenser. It is helpful to know the amount of heat rejected to accurately size air conditioning equipment when self-contained air-cooled ice machines are installed in air conditioned environments. **This heat rejection information is also necessary to evaluate the benefits of using water-cooled or remote condensers to reduce air conditioning loads.** The amount of heat added to an air conditioned environment by an ice machine using a water-cooled or remote condenser is negligible. Knowing the amount of heat rejected is also important when sizing a cooling tower for a water-cooled condenser unit.

### Series 1700 Heat Rejection (BTU/Hour)

Air Conditioning	Peak
*25,000	**40,500

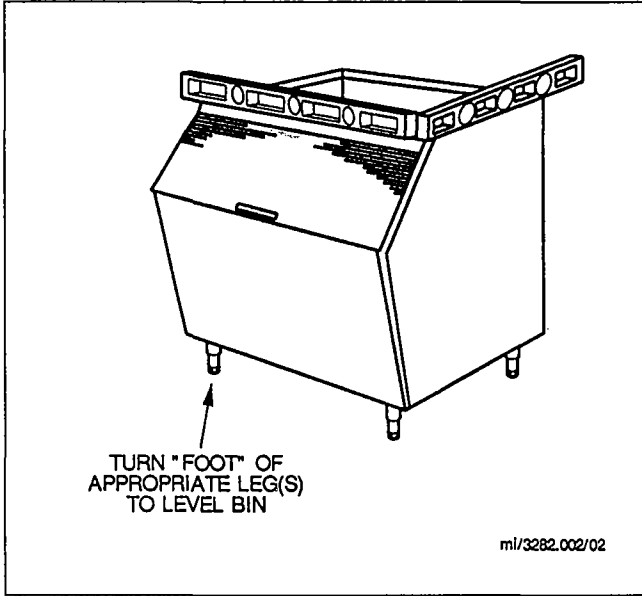
\* Because the heat of rejection varies during the ice making cycle, the figure shown is an average.

\*\* Peak figure is to be used for sizing cooling towers.

NOTE: Not available as self-contained air-cooled.

## MOUNTING SINGLE ICE MACHINE ON STORAGE BIN

1. Move the bin into final position.
2. Level the bin to assure bin door closes and seals properly. Turn the "foot" of the appropriate leg(s) to level bin. Use level on bin top, Figure 2.



**FIGURE 2. LEG ADJUSTMENT**

3. Set the ice machine on the bin, aligning the sides and back of the ice machine with the sides and back of the bin. Take care not to tear or dislodge the mounting gasket.

**MOUNTING TWO ICE MACHINES ON STORAGE BIN**

A K00019 stacking kit is required for stacking two G1700 ice machines. Installation instructions are supplied with the kit.

**ELECTRICAL SERVICE (Figure 3)**

**CAUTION**

All wiring must conform to local, state and national codes.

**Voltage — 208/230V, 60 Hertz, 1 Phase  
208/230V, 60 Hertz, 3 Phase**

Provide a separate fused circuit for each ice machine. The maximum allowable voltage variation is  $\pm 10\%$  of the rated voltage at ice machine start-up (when the electrical load is highest).

**WARNING**

This ice machine requires a ground that meets the National and Local Electrical Code regulations.

**Fuse/Circuit Breaker**

	<b>1 Phase</b>	<b>3 Phase</b>
Water-Cooled	35A	25A
Remote	40A	25A

Provide a separate fuse/circuit breaker for each ice machine. Circuit breakers must be H.A.C.R. rated (does not apply in Canada).

**Minimum Circuit Ampacity**

	<b>1 Phase</b>	<b>3 Phase</b>
Water-Cooled	29.5A	17.5A
Remote	33.2A	20.0A

The minimum circuit ampacity is used to help select the wire size of the electrical supply. (It is not the ice machine's running amps.) The wire size, or gauge, is also dependent upon location, materials used, length of run, etc., and therefore must be determined by a qualified electrician.

**Connection at Self-Contained Ice Machine**  
A 7/8 inch electrical entrance is provided for routing electrical conduit.

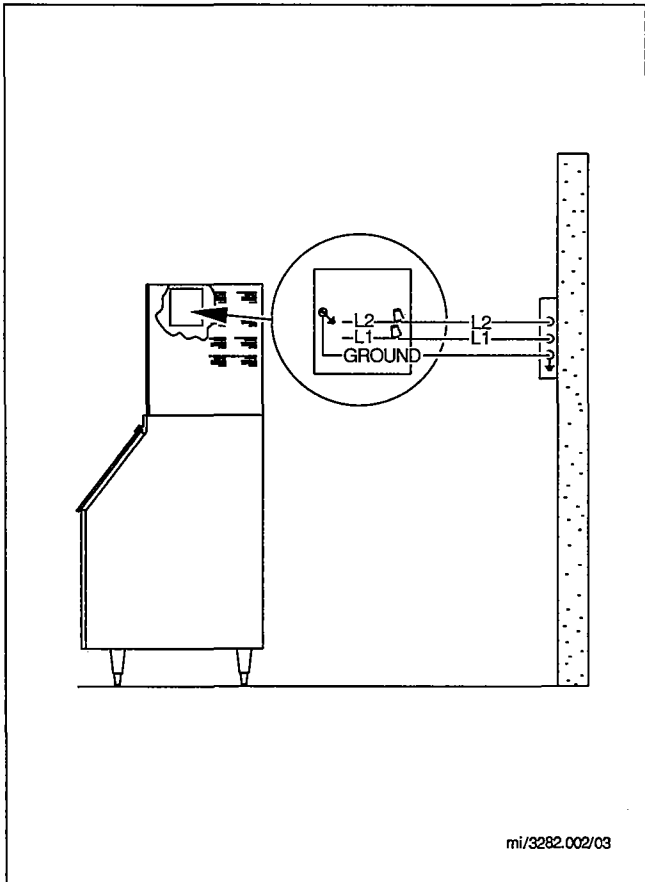
**CAUTION**  
The accompanying diagrams are not intended to show proper wire routing, wire sizing, disconnects, etc., only the correct wire connections. **All electrical connections and routing must conform to local and national codes.**

Refer to Figures 3 and 4 for wiring connections for the self-contained ice machines.

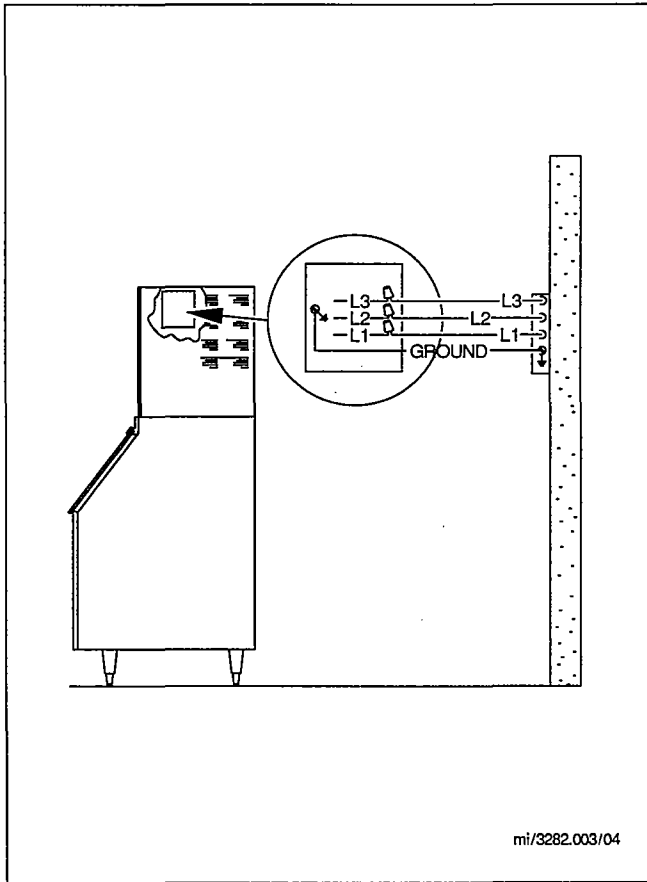
Refer to page 8 for proper Remote Ice Machine Installation.

**208/230 Volt, 1 Phase, 60 Hz, Self-Contained**

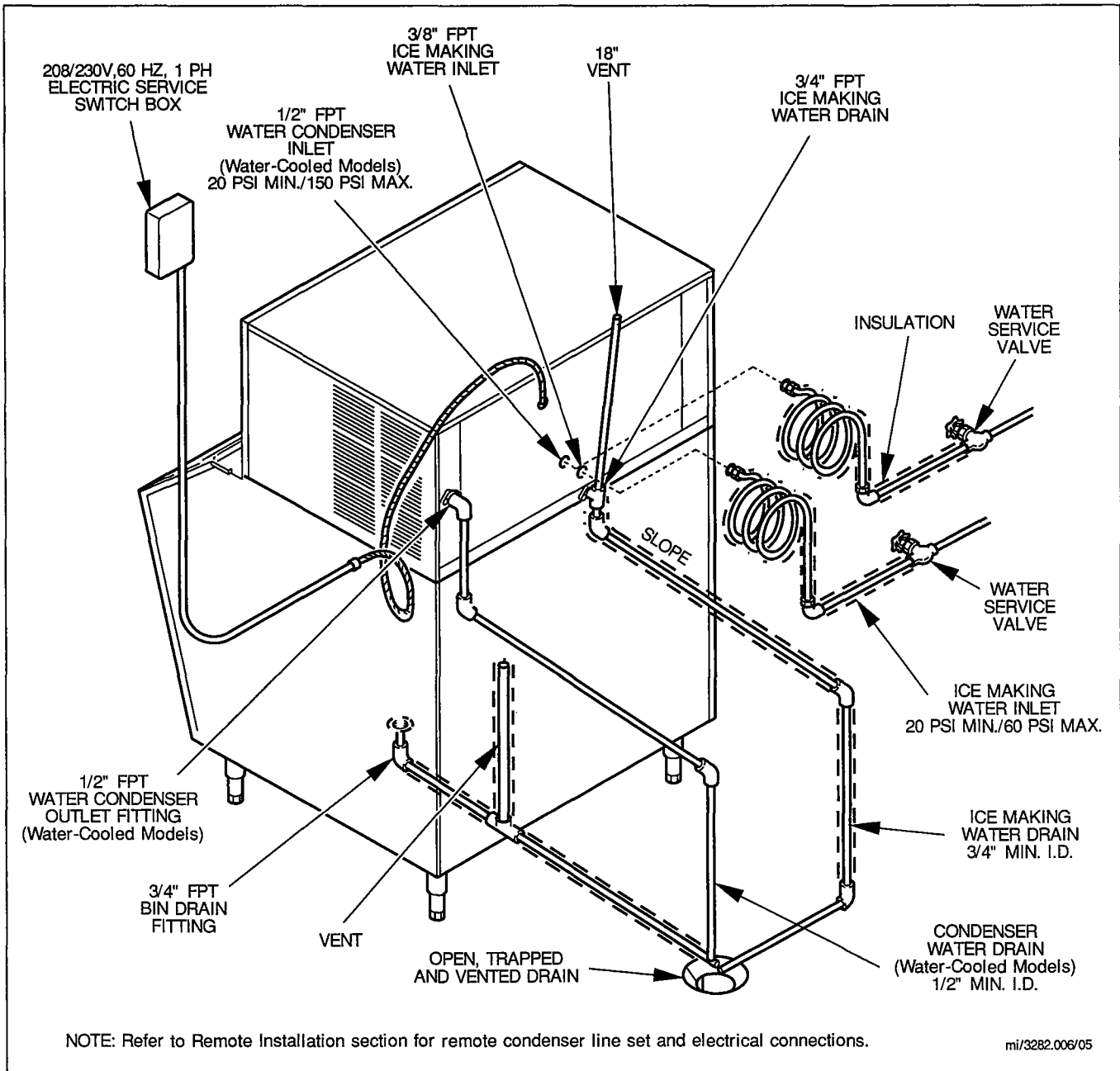
**208/230 Volt, 3 Phase, 60 Hz, Self-Contained**



**FIGURE 3. SINGLE PHASE WIRING**



**FIGURE 4. THREE PHASE WIRING**



**FIGURE 5. SELF-CONTAINED ICE MACHINE INSTALLATION**

**WATER SERVICE/DRAINS (Figure 5)**

**CAUTION**  
Plumbing must conform to local and state codes.

**Water Supply**

Local water conditions may require the installation of water treatment devices in the ice making water supply line.

If water treatment systems such as deionization, reverse osmosis, or distillation are to be used, contact your Manitowoc distributor for instructions.

**Temperature:** minimum 33°F, maximum 90°F.

**IMPORTANT**

The ice machine must not be connected to a hot water supply. Be sure all hot water restrictors (check valves) installed for other equipment (sink faucets, dishwashers, etc.) are in working order.

**Ice making water pressure:** minimum 20 psi, maximum 80 psi.

If water pressure exceeds maximum psi, obtain a water pressure regulator from your Manitowoc distributor.

**Condenser pressure (water-cooled models):** minimum 20 psi, maximum 150 psi.

### **Inlet Water Connections**

**Ice making water:** 3/8 inch F.P.T.

**Condenser (water-cooled models):** 1/2 inch F.P.T.

Install a shut-off valve for both the ice making and condenser water lines. All water lines should be insulated to prevent condensation.

The ice making water supply is connected to a 3/8 inch female pipe fitting in the rear panel. Use 3/8 inch O.D. tubing.

The condenser water supply is connected to a 1/2 inch female pipe fitting in the rear panel. Use a minimum of 1/2 inch O.D. tubing.

### **Drain Connections**

**Ice making water drain:** 3/4 inch F.P.T.

**Condenser drain (water-cooled models only):** 1/2 inch F.P.T.

**Bin drain:** 3/4 inch F.P.T.

Use the following guidelines to prevent backflow of drain water into the ice machine and storage bin.

- Drain lines must have 1-1/2 inch drop per 5 feet of run and must not create any traps.
- The floor drain must be sized to accommodate drainage from all drains.
- Run the bin and ice machine drain lines separately and insulate to prevent condensation.
- The ice machine drain lines require a minimum of 3/4 inch I.D. tubing.
- The bin drain line requires a minimum of 3/4 inch I.D. tubing.

- The ice making water drain and bin drain must be vented to the atmosphere. Do not vent condenser drain (water-cooled models).

### **Water-Cooled Models (Cooling Tower Applications)**

A water-cooling tower installation does not require modification to the ice machine; the water regulator valve for the condenser continues to control the refrigeration discharge pressure. It is necessary to know the amount of heat rejection (see page 4) and the pressure drop through the condenser and water valve (inlet and outlet of the ice machine) to apply these types of systems to the ice machine.

- Water entering the condenser must not exceed 90°F.
- Water flow through the condenser must not exceed 5 GPM.
- Allow for a pressure drop of 7 psi between the condenser water inlet and outlet of the ice machine.
- Condenser water exiting temperature must not exceed 110°F.

## **REMOTE ICE MACHINE INSTALLATION**

### **IMPORTANT**

Failure to follow installation guidelines may affect warranty coverage.

### **General Information**

<b>Ice Machine</b>	<b>Remote Single Condenser</b>	<b>Line Set</b>
GR-1790N	AC-1796B	RL-**-502
GR-1792N	AC-1796B	RL-**-502
GR-1794N	AC-1796B	RL-**-502

Line set size: Discharge 5/8"  
Liquid 3/8"

The remote model ice machines are used in conjunction with a remoted air condenser and corresponding line set number. The \*\* in the line set model number represents line length. Line sets are available in 20', 35' and 50' lengths.

### Ice Machine Set-Up

Follow the standard installation specifications on water supply, drain lines and electrical requirements, page 5.

The following guidelines cover remote condenser installation (line set routing, etc.), and remote ice machine and condenser electrical connections.

### Remote Air Condenser Assembly

Refer to page 2.

Condenser legs attach to provide for 3.5 (no legs attached), 8, 12, 16 or 20 inch clearance. 20" clearance

is to be used in installation where heavy snow or debris may collect at base of condenser causing air flow restrictions.

#### NOTE

The condensers are equipped with six mounting holes in the base of the legs. Refer to dimension illustration, page 2.

Dimensions referred to are distance from mounting surface to bottom of condenser. How to secure the remote condenser to final location is determined by installation.

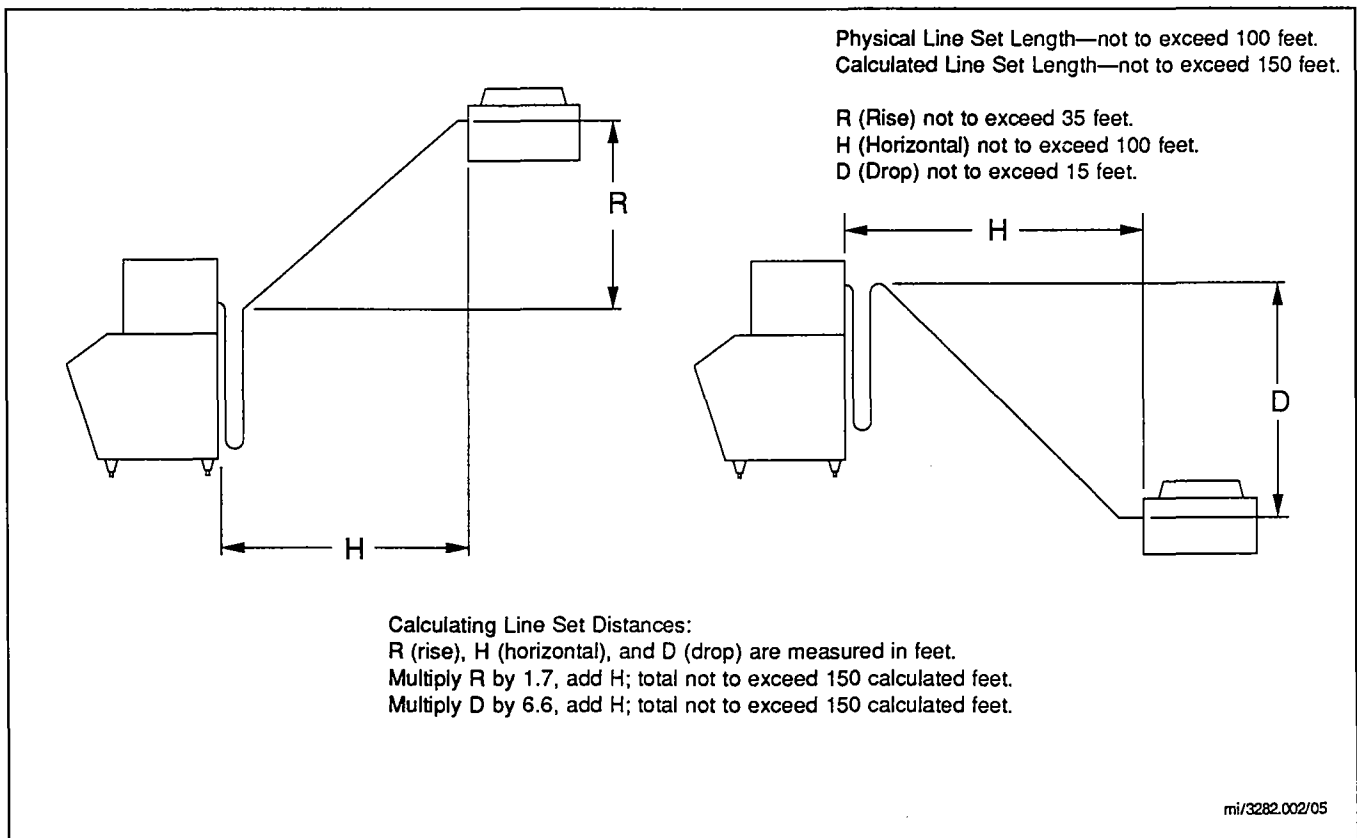


FIGURE 6. CALCULATING LENGTH OF LINE SETS

### Location of Remote Condenser

The following practices must be followed to ensure proper performance of the ice machine and that warranty coverage is not voided. (See Typical Remote Installations, Figures 6 and 7).

Air temperature around condenser — minimum -20°F, maximum 120°F.

Must use approved condenser and line set sizes.  
Maximum physical line set length — 100 ft.

Maximum vertical rise — 35 ft.

Maximum vertical drop — 15 ft.

Maximum calculated line set length — 150 ft. (refer to page 9).

Routing of line set must not form traps (Figure 7).

Condensers must be mounted horizontally with condenser fan motor on top (Figure 8).

### Routing of Line Sets (Figure 7)

The following practices must be followed when routing refrigerant lines to ensure proper performance and service accessibility to the ice machine.

#### NOTE

A 2-1/2" hole in wall or roof is needed for tubing routing.

1. Make service loop in line set provided so that the ice machine can be pulled away from the wall.
2. The line set must slope downward toward the ice machine or condenser. Never form a trap in the discharge line as refrigerant oil must be free to drain toward the ice machine or condenser. The service loop is part of the ice machine's design.
3. The outside line set must be as short as possible.

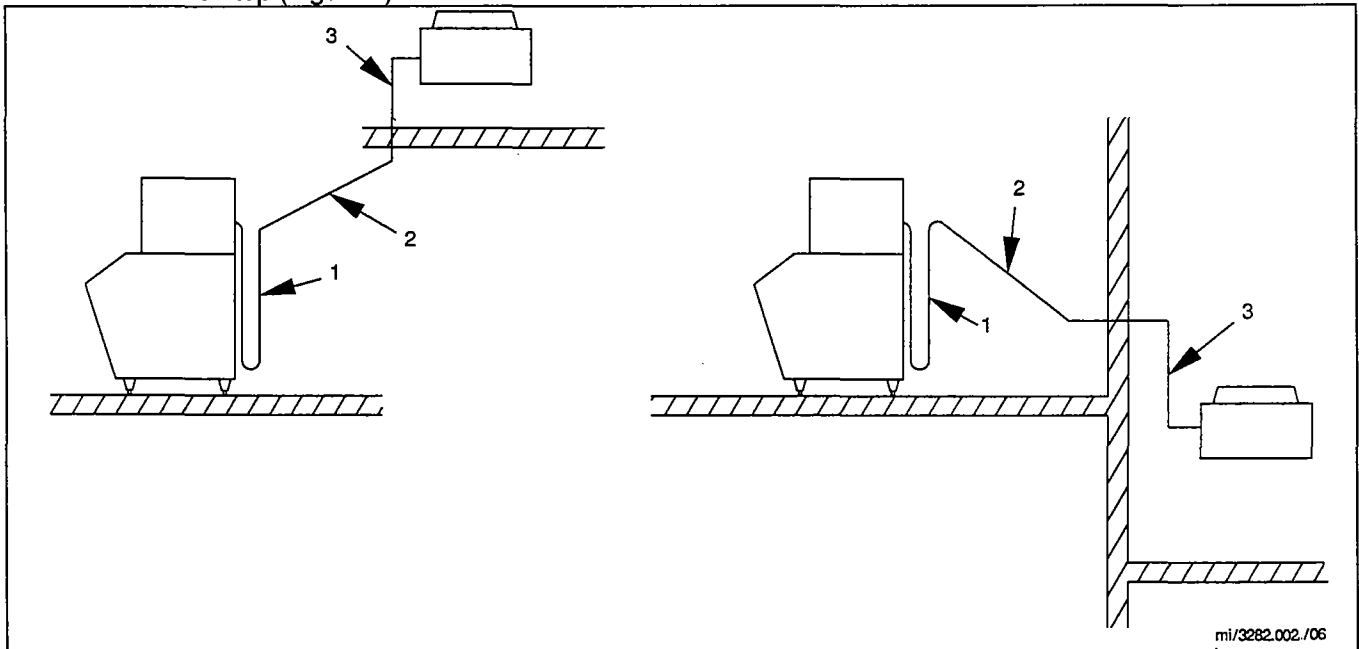
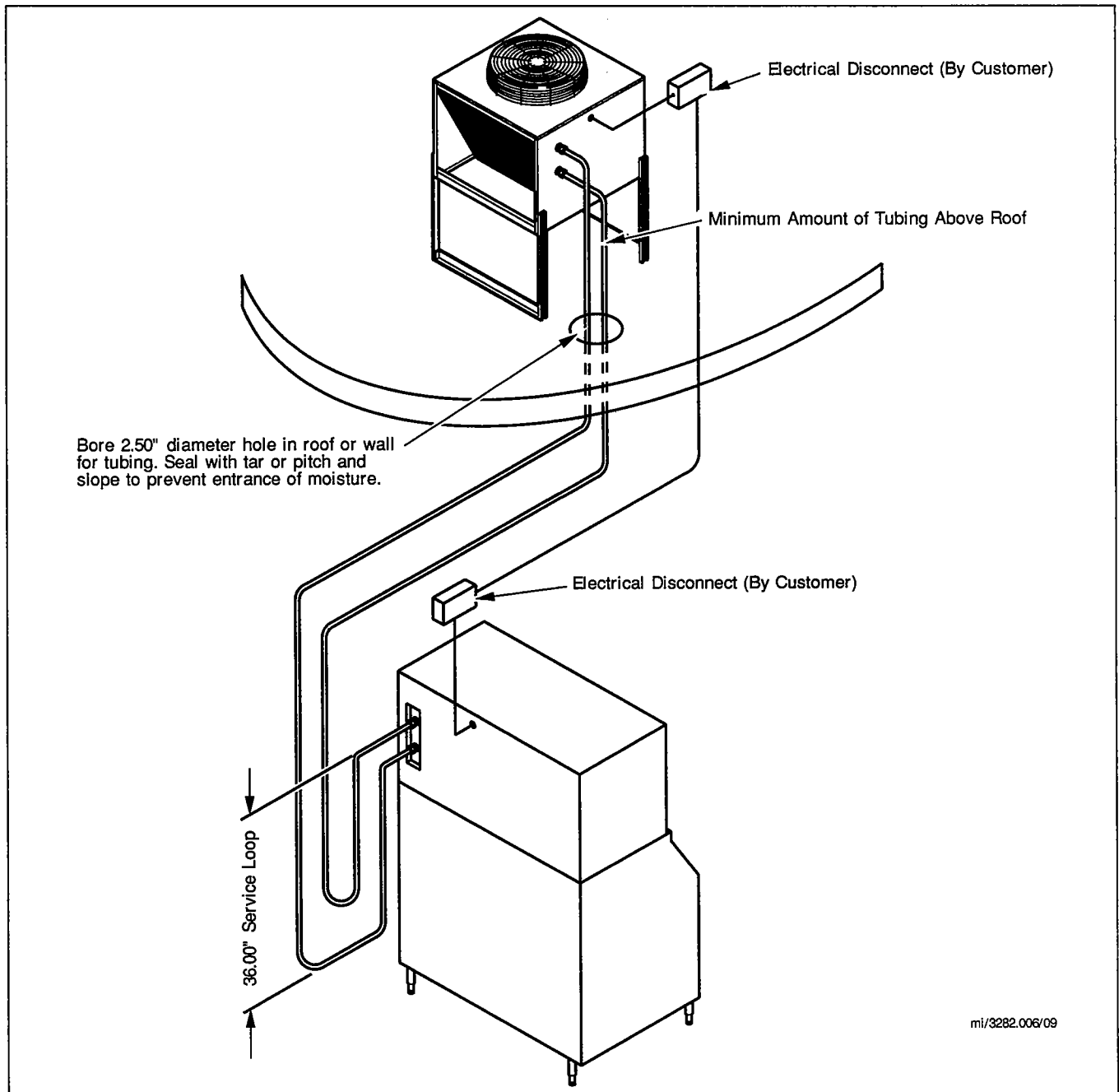


FIGURE 7. ROUTING OF LINE SETS



mi/3282.006/09

**FIGURE 8. LINE SET CONNECTIONS FOR REMOTE CONDENSER**

**Connection of Line Set (Figure 8)**

1. Remove dust caps from line set, condenser and ice machine.
2. Apply refrigeration oil to the threads on the quick disconnect couplers before connection to the condenser.
3. Carefully thread by hand, the female fitting on to the condenser or ice machine.
4. Using proper size wrench, tighten couplings until they bottom out. Then add 1/4 turn to ensure proper

brass-to-brass seating. (If a torque wrench is used: liquid line — 10-12 ft. lbs.; discharge line — 35-45 ft. lbs.).

5. Leak check all fittings.

**CAUTION**

If it is necessary to remove the connecting couplers, remove all refrigerant from the ice machine before attempting to remove the couplers from the ice machine or remote condenser.

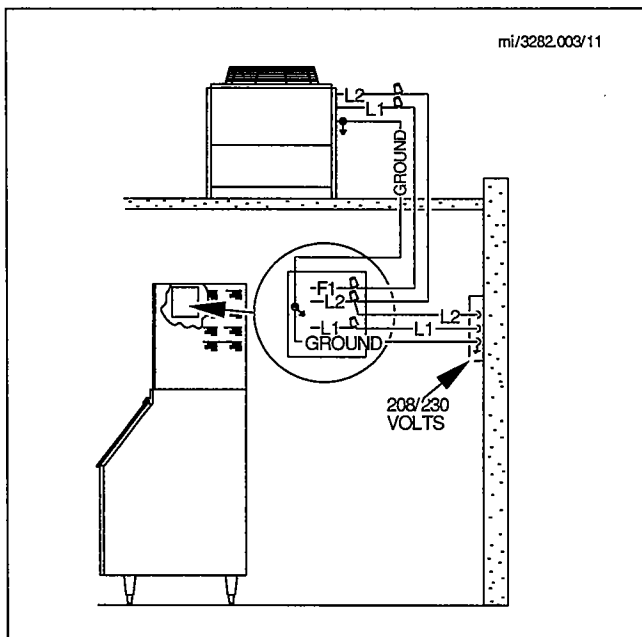
## Remote Ice Machine Electrical Hook-Up

Refer to page 3 for fuse/circuit breaker size and minimum circuit ampacity.

### CAUTION

The diagrams are not intended to show proper wire routing, wire sizing, disconnects, etc., only the proper wire connections. All electrical connections and routing must conform to local and national codes.

An electrical disconnect (supplied by installer) must be installed at condenser. A 7/8 inch hole is provided at condenser for electrical connection.



**FIGURE 9. 1-PHASE REMOTE CONDENSER WIRING**

Condenser - 208/230 Volts

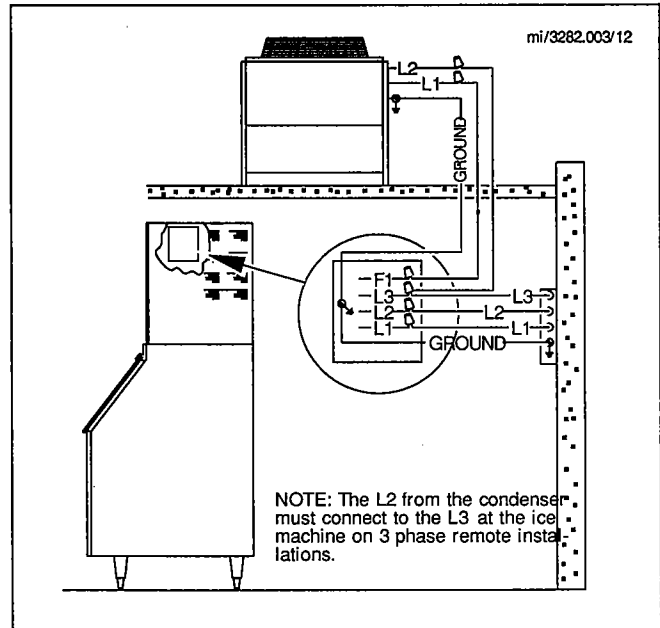
Remote Ice Machine - 208/230 Volt, 1 Phase, 60 Hz

### Single Circuit Condensers AC Models (Figures 9 and 10)

The remote condenser requires a 230V power supply which can be wired directly to the ice machine. The condenser fan will run only when the ice machine is operating.

### NOTE

When wiring a remote condenser to a separate power source, the F1 lead in the ice machine **is not used** and must have a wire nut securely fastened to it.



**FIGURE 10. 3-PHASE REMOTE CONDENSER WIRING**

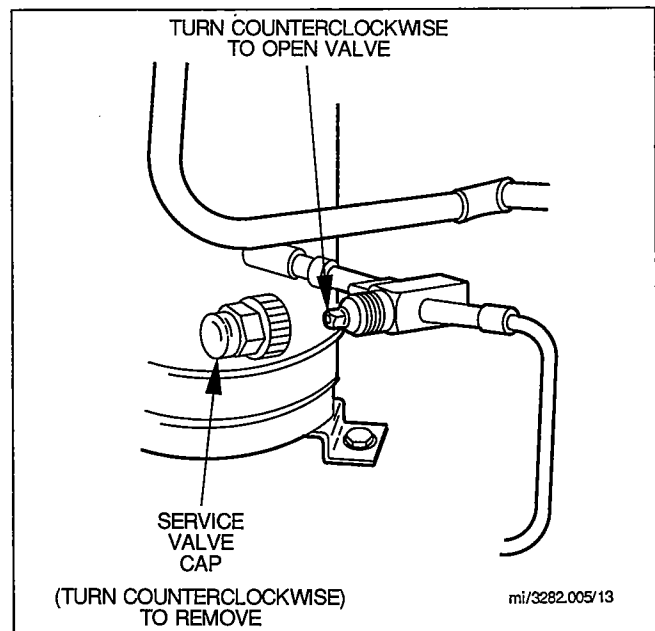
Condenser - 208/230 Volts

Remote Ice Machine - 208/230 Volt, 3 Phase, 60 Hz

### Receiver Service Valve (Figure 11)

The receiver service valve is closed during shipment. Open prior to starting the ice machine as follows.

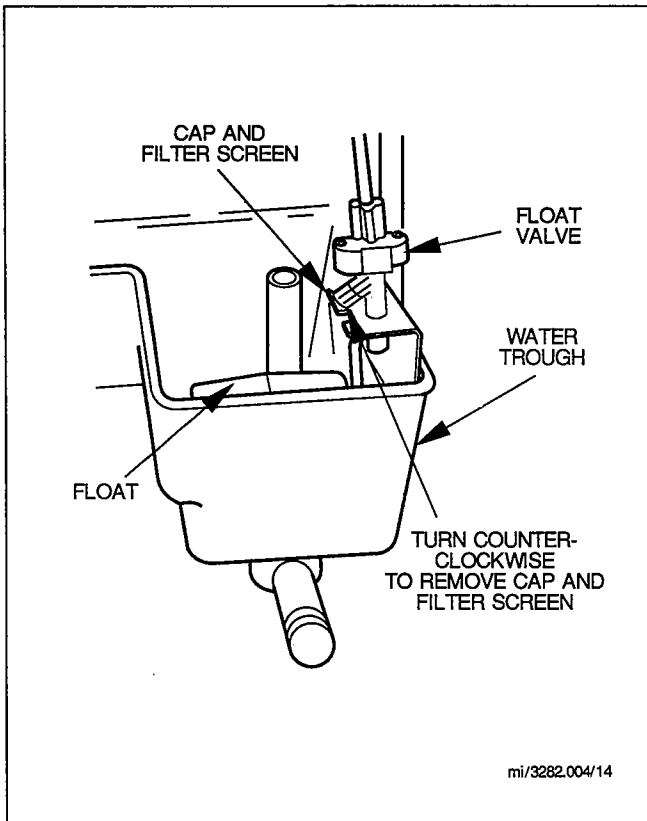
1. Remove right side panel.
2. Remove receiver service valve cap.
3. Backseat (open) valve.
4. Reinstall cap and right side panel.



**FIGURE 11. BACKSEATING RECEIVER SERVICE VALVE**

## INSTALLATION CHECK LIST

- Is ice machine level?
- Has all the internal packing been removed?
- Have all the electrical and water connections been completed?
- Has the supply voltage been tested and checked against the rating on the nameplate?
- Is there a minimum of 5 inches clearance around the ice machine for proper air circulation?
- Is the ice machine installed where ambient temperatures will not vary below 35°F or above 110°F? Incoming water temperature range 33°F/90°F? (See Owner/Operator Use and Care Guide for winterizing.)



**FIGURE 12. CLEANING FLOAT VALVE FILTER SCREEN**

- Is there a separate drain for the water-cooled condenser?
- Are ice machine and bin drains vented?
- Are all electrical leads free from contact with refrigeration lines and moving components?
- Has filter screen in float valve been cleaned? See Figure 12.
- Has owner/operator been instructed regarding maintenance procedures and the use of Manitowoc Cleaner and Sanitizer?
- Has owner/operator completed the warranty registration card?
- Has Owner/Operator Use and Care Guide been left with owner/operator?
- Was bin and ice machine sanitized?

### Additional Ice Machine Checks for Remote Models

- Has receiver service valve been opened?
- Does the remote condenser fan operate properly? (After start-up.)
- Is remote condenser located where ambient temperatures will not vary below -20°F or above +120°F?

## BEFORE STARTING ICE MACHINE

All Manitowoc Ice Machines are factory operated and adjusted before shipment. Normally no adjustments are necessary for new installation.

To ensure proper operation, follow the OPERATIONAL CHECK in the Owner/Operator Use and Care Guide.

Starting the ice machine and completing OPERATIONAL CHECK is the responsibility of the owner/installer. Adjustments and maintenance as outlined in the Owner/Operator Use and Care Guide are not covered by warranty.

**MANITOWOC ICE, INC.**

2110 South 26th Street P.O. Box 1720

Manitowoc, WI 54221-1720

Phone: (920) 682-0161

Fax: (920) 683-7585

**Web Site:** [www.manitowocice.com](http://www.manitowocice.com)

© 1999 Manitowoc Ice, Inc.

Litho in U.S.A.