



CONFIDENTIAL

Multi Air Conditioner

SVC MANUAL(Exploded View)

**MODEL : AMNW07GTRB0(LMCN078HV)
AMNW09GTRB0(LCN098HV4)
AMNW12GTRB0(LCN128HV4)
AMNW18GTQB0(LCN188HV4)**

CAUTION

Before Servicing the unit, read the safety precautions in General SVC manual.
Only for authorized service personnel.

Any reproduction, duplication, distribution (including by way of email, facsimile or other electronic means), publication, modification, copying or transmission of this Service Manual is STRICTLY PROHIBITED unless you have obtained the prior written consent of the LG Electronics entity from which you received this Service Manual. The material covered by this prohibition includes, without limitation, any text, graphics or logos in this Service Manual.

Copyright © 2018 - 2019 LG Electronics Inc. All rights reserved. Only training and service purposes.

1. Specification

| Indoor unit type | | | Ceiling Cassette - 4way | |
|------------------------------|-------------------------------|--------------|--|--|
| Model | | | AMNW07GTRB0(LMCN078HV) | AMNW09GTRB0(LCN098HV4) |
| Decoration Panel Name | | | PT-QCHW0 | PT-QCHW0 |
| Power Supply | | V, Ø, Hz | 208/230, 1, 60 | 208/230, 1, 60 |
| Capacity(*) | | Btu/h class | 7,000 | 9,000 |
| Current | Running Current | A | 0.25 | 0.25 |
| Fan | Motor Type | | BLDC | BLDC |
| | Fan Type | | Turbo Fan | Turbo Fan |
| | Motor Output(W) x No. of Unit | | 43 x 1 | 43 x 1 |
| | Air Flow Rate (H / M / L) | CMM | 7.5 / 6.0 / 5.0 | 8.5 / 7.0 / 6.0 |
| | | CFM | 265 / 212 / 177 | 300 / 265 / 230 |
| | External Static Pressure | mmAq | - | - |
| | Capacitor | µF / Vac | - | - |
| Drive | | Direct Drive | Direct Drive | |
| Coil | Row x Column x FPI | | 1R x 8C x 18 | 2R x 8C x 18 |
| Dimensions (W x H x D) | Body | mm(inch) | 570 x 214 x 570 (22-7/16 x 8-7/16 x 22-7/16) | 570 x 214 x 570 (22-7/16 x 8-7/16 x 22-7/16) |
| | Decorative Panel | mm(inch) | 700 x 22 x 700 (27-9/16 x 7/8 x 27-9/16) | 700 x 22 x 700 (27-9/16 x 7/8 x 27-9/16) |
| Net Weight | Body | kg (lbs) | 14.0 (30.9) | 14.0 (30.9) |
| | Decorative Panel | kg (lbs) | 3.0 (6.6) | 3.0 (6.6) |
| Sound Level (H / M / L) | | dB(A)+3 | 31 / 27 / 24 | 36 / 33 / 30 |
| Piping | Liquid | mm (inch) | 6.35 (1/4) | 6.35 (1/4) |
| Connections | Gas | mm (inch) | 9.52 (3/8) | 9.52 (3/5) |
| | Drain(OD/ID) | mm(inch) | 32.0(1-1/4) / 25.0(1) | 32.0(1-1/4) / 25.0(1) |
| Safety Devices | | | Fuse, thermal protector for fan motor | Fuse, thermal protector for fan motor |
| Refrigerant | | | R410A | R410A |
| Refrigerant Control | | | EEV(in Outdoor unit) | EEV(in Outdoor unit) |
| Transmission Interunit Cable | | No. x AWG | 4C x 18 | 4C x 18 |

Note:

- Capacities are based on the following conditions:
 Cooling: - Indoor Temperature 26.7°C(80°F) DB/19.4°C(67°F)
 - Outdoor Temperature 35°C(95°F) DB/23.9°C(75°F)
 Heating: - Indoor Temperature 21.1°C(70°F) DB/15.6°C(60°F) WB
 - Outdoor Temperature 8.3°C(47°F) DB/6.1°C(43°F) WB
 Piping Length - Interconnecting Piping Length 7.5m(24.6 ft.)
 - Level Difference of Zero
- Wiring cable size must comply with the applicable local and national code.
- The specification may be subject to change without prior notice for purpose of improvement.
- For more Capacity(*), refer to the combination table

| Conversion Formula |
|------------------------------|
| kW = Btu/h class X 0.0002931 |
| cfm = CMM x 35.3 |

| Indoor unit type | | | Ceiling Cassette - 4way | |
|------------------------------|-------------------------------|-----------|--|---|
| Model | | | AMNW12GTRB0[LCN128HV4] | AMNW18GTQBO(LCN188HV4) |
| Decoration Panel Name | | | PT-QCHW0 | PT-QCHW0 |
| Power Supply | V, Ø, Hz | | 208/230, 1, 60 | 208/230, 1, 60 |
| Capacity(*) | Btu/h class | | 12,000 | 18,000 |
| Current | Running Current | A | 0.25 | 0.25 |
| Fan | Motor Type | | BLDC | BLDC |
| | Fan Type | | Turbo Fan | Turbo Fan |
| | Motor Output(W) x No. of Unit | | 43 x 1 | 43 x 1 |
| | Air Flow Rate | CMM | 9.5 / 8.0 / 7.0 | 13.0 / 12.0 / 11.0 |
| | (H / M / L) | CFM | 335 / 283 / 247 | 459 / 424 / 388 |
| | External Static Pressure | mmAq | - | - |
| | Capacitor | µF / Vac | - | - |
| | Drive | | Direct Drive | Direct Drive |
| Coil | Row x Column x FPI | | 2R x 8C x 18 | 2R x 10C x 18 |
| Dimensions (W x H x D) | Body | mm(inch) | 570 x 214 x 570 (22-7/16 x 8-7/16 x 22-7/16) | 570 x 256 x 570 (22-7/16 x 10-3/32 x 22-7/16) |
| | Decorative Panel | mm(inch) | 700 x 22 x 700 (27-9/16 x 7/8 x 27-9/16) | 700 x 22 x 700 (27-9/16 x 7/8 x 27-9/16) |
| Net Weight | Body | kg (lbs) | 14.0 (30.9) | 14.5 (32) |
| | Decorative Panel | kg (lbs) | 3.0 (6.6) | 3.0 (6.6) |
| Sound Level | (H / M / L) | dB(A)+3 | 38/ 35/ 32 | 43 / 41 / 38 |
| Piping Connections | Liquid | mm (inch) | 6.35 (1/4) | 6.35 (1/4) |
| | Gas | mm (inch) | 9.52 (3/8) | 12.7 (1/2) |
| | Drain(OD/ID) | mm(inch) | 32.0(1-1/4) / 25.0(1) | 32.0(1-1/4) / 25.0(1) |
| Safety Devices | | | Fuse, thermal protector for fan motor | Fuse, thermal protector for fan motor |
| Refrigerant | | | R410A | R410A |
| Refrigerant Control | | | EEV(in Outdoor unit) | EEV(in Outdoor unit) |
| Transmission Interunit Cable | No. x AWG | | 4C x 18 | 4C x 18 |

Note:

1. Capacities are based on the following conditions:

- Cooling: - Indoor Temperature 26.7°C(80°F) DB/19.4°C(67°F)
- Outdoor Temperature 35°C(95°F) DB/23.9°C(75°F)
- Heating: - Indoor Temperature 21.1°C(70°F) DB/15.6°C(60°F) WB
- Outdoor Temperature 8.3°C(47°F) DB/6.1°C(43°F) WB
- Piping Length - Interconnecting Piping Length 7.5m(24.6 ft.)
- Level Difference of Zero

2. Wiring cable size must comply with the applicable local and national code.

3. The specification may be subject to change without prior notice for purpose of improvement.

4. For more Capacity(*), refer to the combination table

| Conversion Formula |
|------------------------------|
| kW = Btu/h class X 0.0002931 |
| cfm = CMM x 35.3 |

2. Function Table

| Category | Function | AMNW07GTRB0(LMCN078HV) AMNW09GTRB0(LCN098HV4) AMNW12GTRB0(LCN128HV4) | AMNW18GTQB0(LCN188HV4) |
|----------------------|---|--|------------------------|
| Air flow | Air supply outlet | 4 | 4 |
| | Airflow direction control(left & right) | X | X |
| | Airflow direction control(up & down) | Auto | Auto |
| | Auto swing(left & right) | X | X |
| | Auto swing(up & down) | O | O |
| | Airflow steps(fan / cool / heat) | 4/5/4 | 4/5/4 |
| | Chaos swing | X | X |
| | Chaos wind(auto wind) | O | O |
| | Jet cool(Power wind) | O | O |
| Air Purifier | Swirl wind | O | O |
| | Deodorizing filter | X | X |
| | Plasma air purifier | Option | Option |
| Installation | Pre-filter(washable / anti-fungus) | O | O |
| | Drain pump | O | O |
| | E.S.P. control | - | - |
| | Electric heater(operation) | X | X |
| Reliability | High ceiling operation | O | O |
| | Hot start | O | O |
| | Self diagnosis | O | O |
| Convenience | Soft dry operation | O | O |
| | Auto changeover | X | X |
| | Auto cleaning | X | X |
| | Auto operation(artificial intelligence) | O | O |
| | Auto restart operation | O | O |
| | Child lock | O | O |
| | Energy-Saving Cooling Mode | X | X |
| | Forced operation | O | O |
| | Group control | O | O |
| | Sleep mode | O | O |
| | Timer(on/off) | O | O |
| Individual Control | Timer(weekly) | O | O |
| | Two thermistor control | O | O |
| | Wide wired remote controller | Accessory (PQRCUSA0) | Accessory (PQRCUSA0) |
| | Deluxe wired remote controller | - | - |
| | Simple wired remote controller | X | X |
| | Simple wired remote controller(for hotel use) | Accessory (PQRCFCS0C) | Accessory (PQRCFCS0C) |
| | Wireless remote controller(simple) | X | X |
| CAC Network Function | Wireless LCD remote control | X | X |
| | Wireless LCD remote control(Ez) | O | O |
| | General central controller (Non LGAP) | X | X |
| | Dry contact | Accessory (PQDSB) | Accessory (PQDSB) |
| Special Function Kit | Central control(LGAP) | X | X |
| | PDI(power distribution indicator) | X | X |
| | PI 485 | X | X |
| Others | CTIE | X | X |
| | Zone control | - | - |
| | Thermistor | - | - |

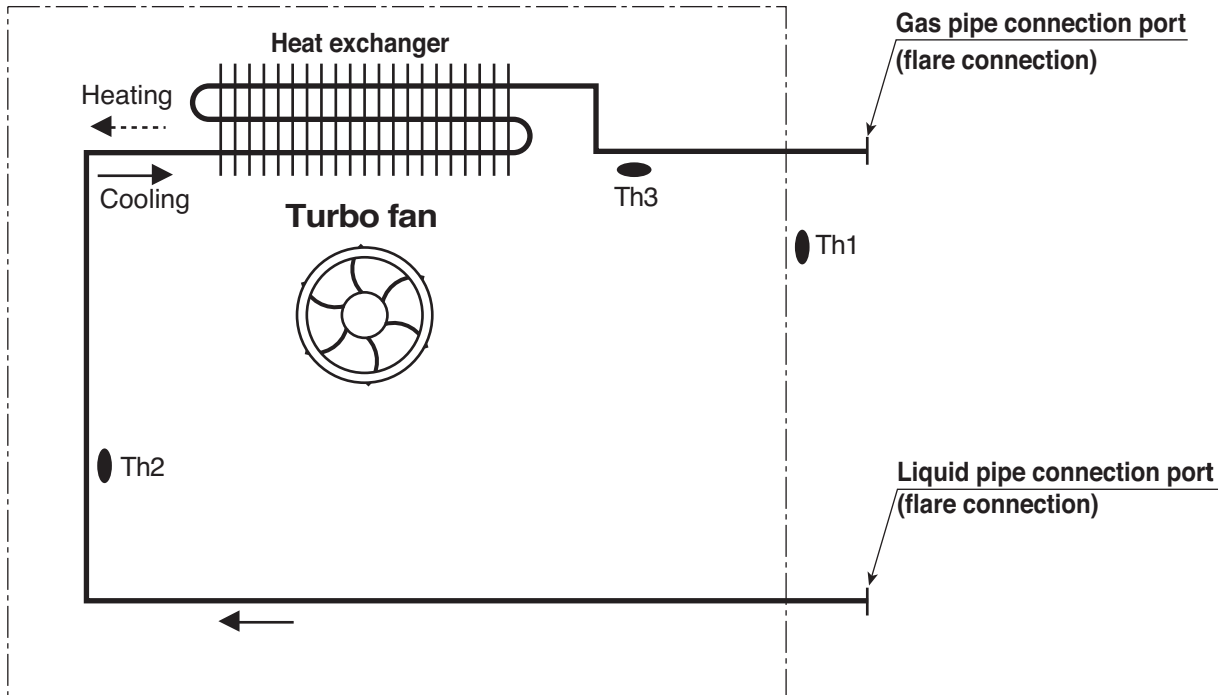
Note:

O : Applied, X : Not applied, - : No relation

* Option : Model name & price are different according to options, and assembled in factory with main unit.

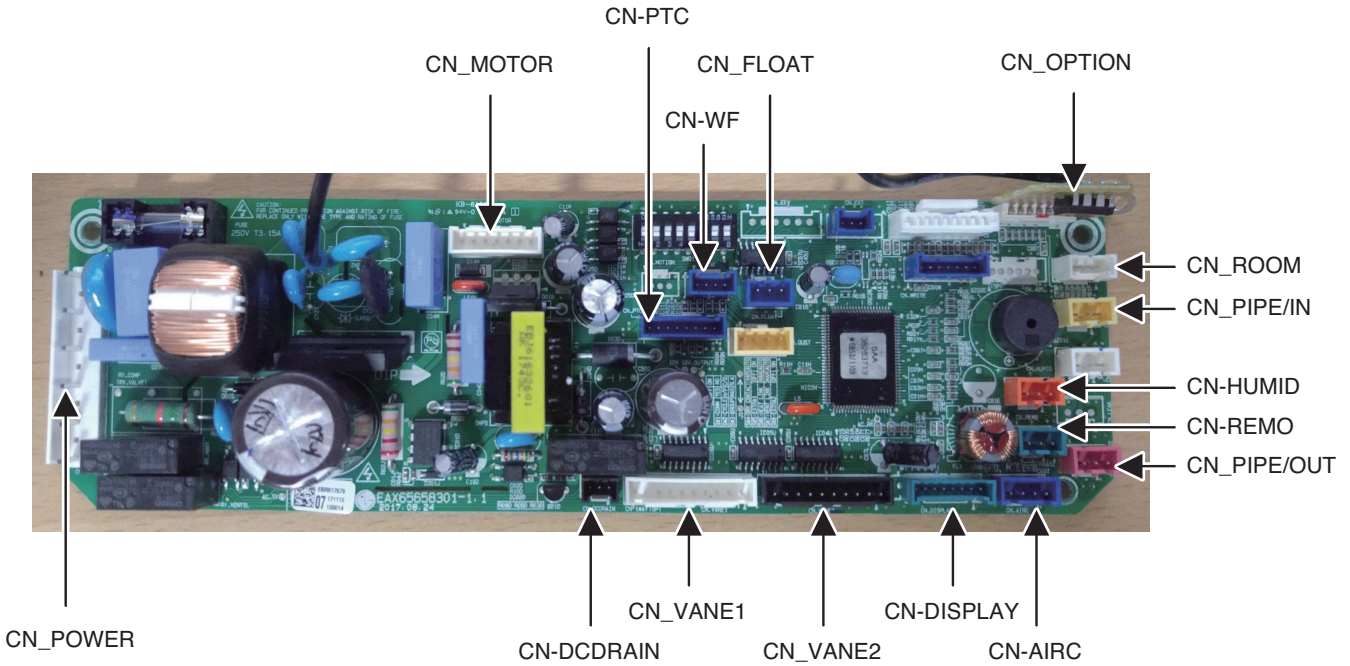
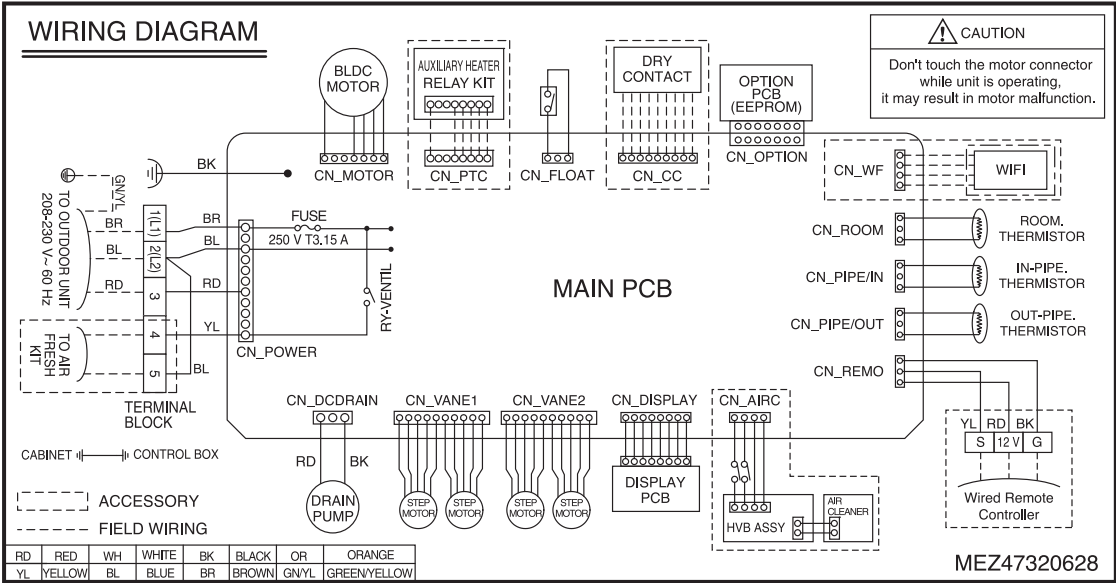
* Accessory : Installed at field, ordered and purchased separately by the corresponding model name, supplied with separate package.

3. Piping Diagrams



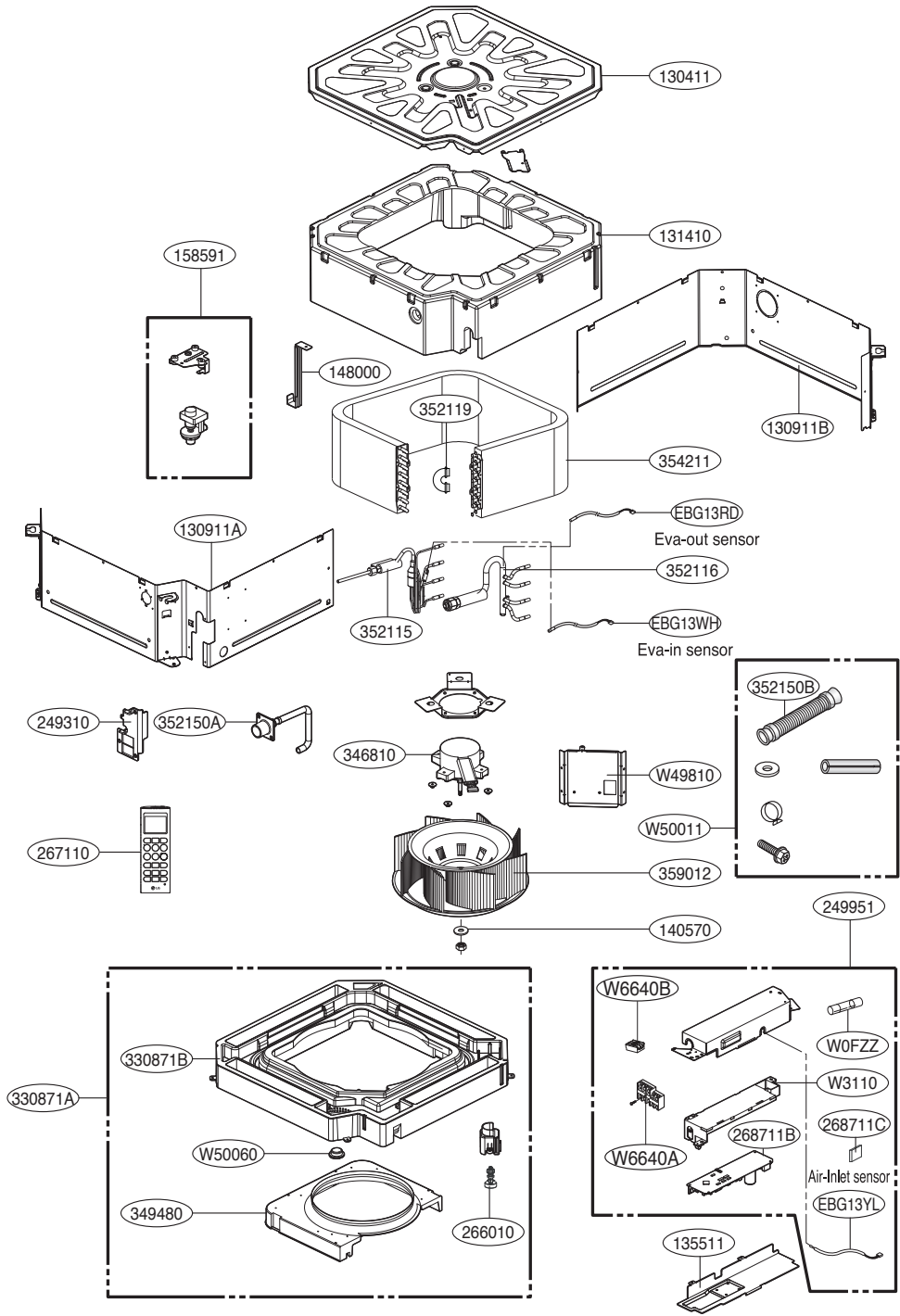
| LOC. | Description | PCB Connector |
|------|--|---------------|
| Th1 | Thermistor for suction air temperature | CN_ROOM |
| Th2 | Thermistor for evaporator inlet temperature | CN_PIPE/IN |
| Th3 | Thermistor for evaporator outlet temperature | CN_PIPE/OUT |

4. Wiring Diagrams



5. Exploded View

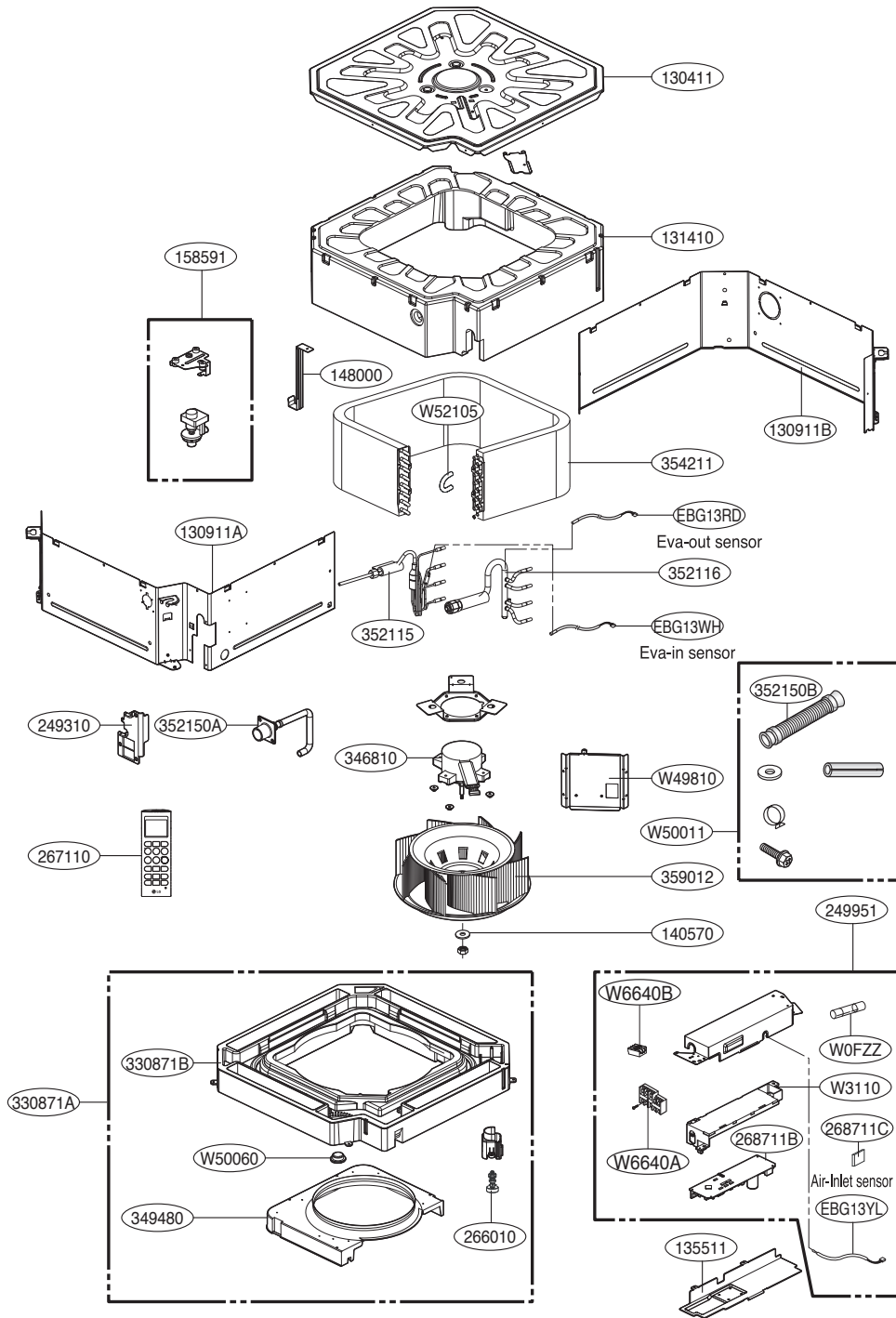
• TR Chassis : AMNW07GTRB0



| Location No. | Description | Sensor Information | Housing Color |
|--------------|--------------------------|--------------------|---------------|
| EBG13YL | Thermistor1(CN_ROOM) | Air-Inlet | Yellow |
| EBG13WH | Thermistor2(CN_PIPE/IN) | Eva-in | White |
| EBG13RD | Thermistor3(CN_PIPE/OUT) | Eva-out | Red |

Note) * Please ensure GCSC since the replacement parts may be changed depending upon the buyer's request. Please check the correct parts in View RPL(Replacement Part List) on GCSC. (GCSC Website <http://biz.Lgservice.com>.)

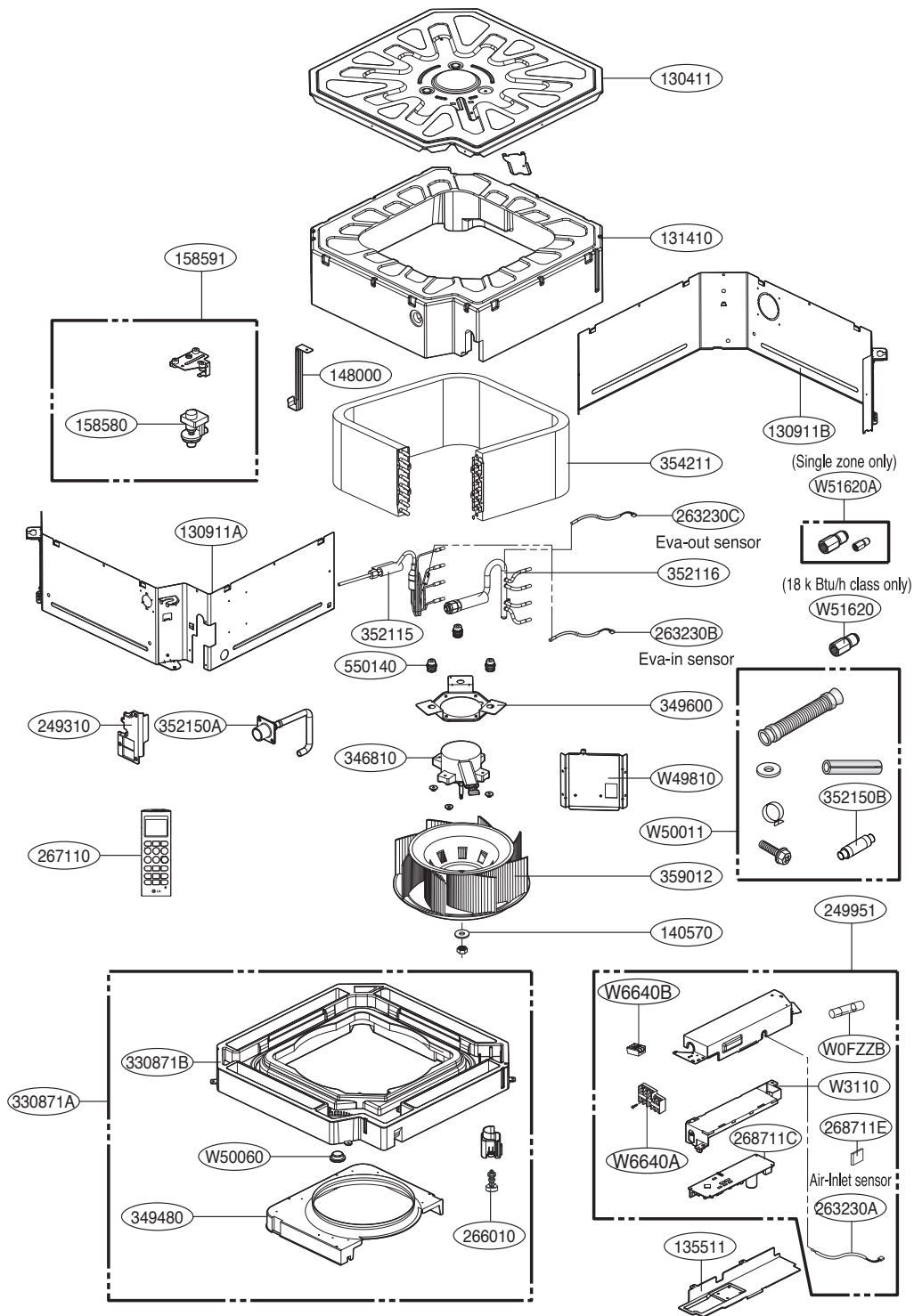
• TR Chassis : AMNW09GTRB0 / AMNW12GTRB0



| Location No. | Description | Sensor Information | Housing Color |
|--------------|--------------------------|--------------------|---------------|
| EBG13YL | Thermistor1(CN_ROOM) | Air-Inlet | Yellow |
| EBG13WH | Thermistor2(CN_PIPE/IN) | Eva-in | White |
| EBG13RD | Thermistor3(CN_PIPE/OUT) | Eva-out | Red |

Note) * Please ensure GCSC since the replacement parts may be changed depending upon the buyer's request.
 Please check the correct parts in View RPL(Replacement Part List) on GCSC.
 (GCSC Website <http://biz.Lgservice.com>),

• TQ Chassis

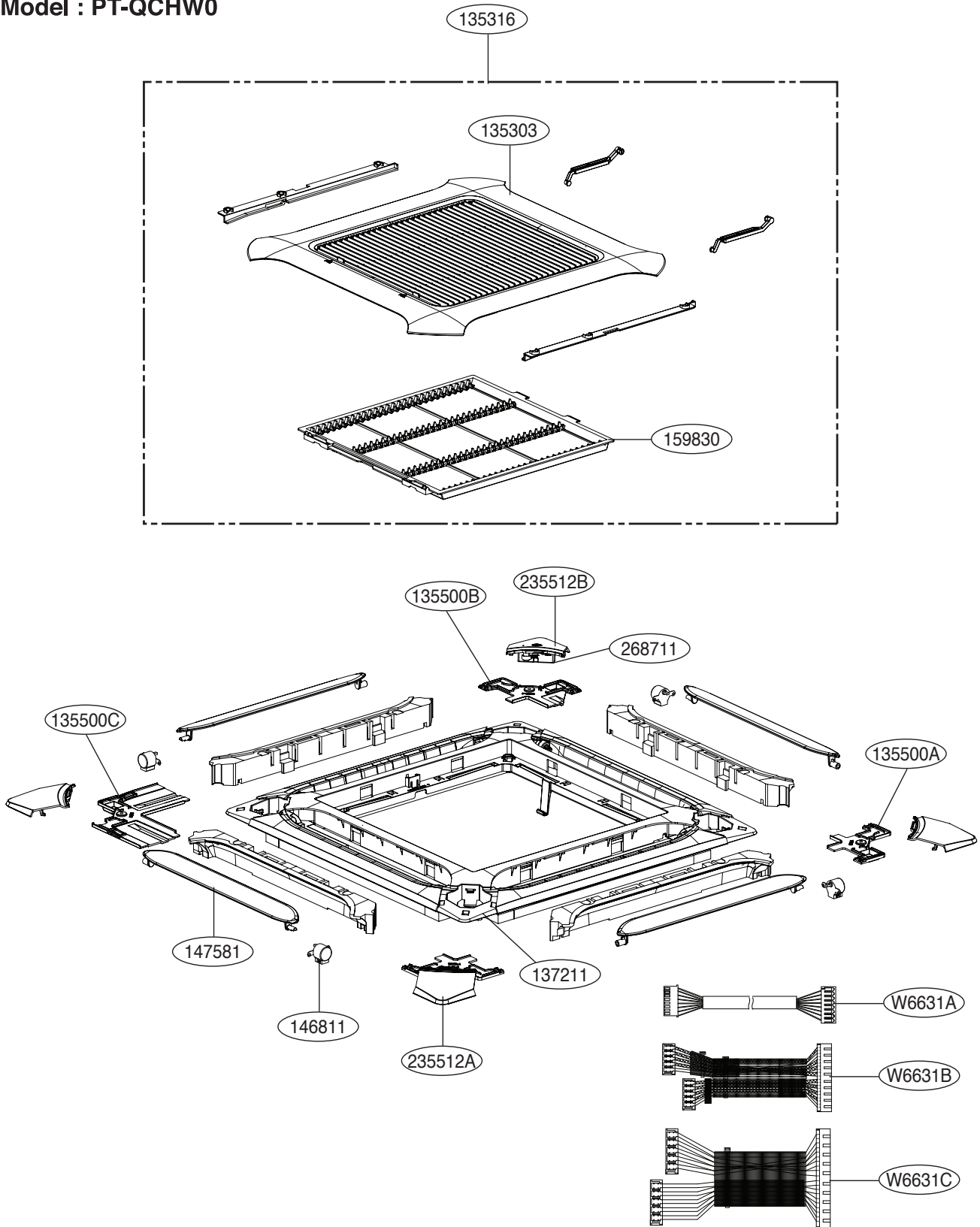


| Location No. | Description | Sensor Information | Housing Color |
|--------------|--------------------------|--------------------|---------------|
| 263230A | Thermistor1(CN_ROOM) | Air-Inlet | Yellow |
| 263230B | Thermistor2(CN_PIPE/IN) | Eva-in | White |
| 263230C | Thermistor3(CN_PIPE/OUT) | Eva-out | Red |

Note) * Please ensure GCSC since the replacement parts may be changed depending upon the buyer's request. Please check the correct parts in View RPL(Replacement Part List) on GCSC. (GCSC Website <http://biz.Lgservice.com>,)

Front Panel (Accessory)

• Model : PT-QCHW0



Note) * Please ensure GCSC since the replacement parts may be changed depending upon the buyer's request.
 Please check the correct parts in View RPL(Replacement Part List) on GCSC.
 (GCSC Website <http://biz.Lgservice.com>.)



P/NO : MFL68020004