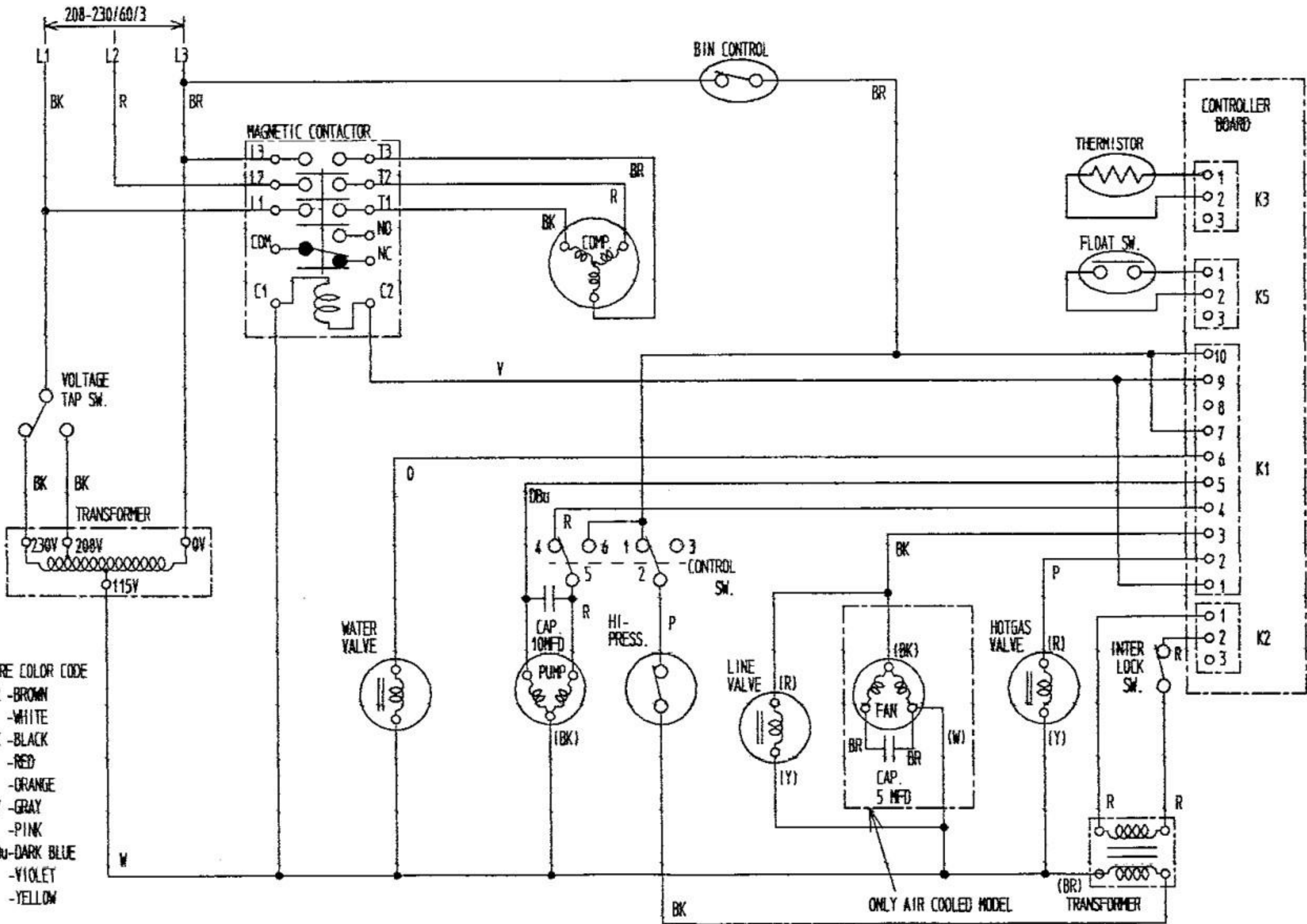
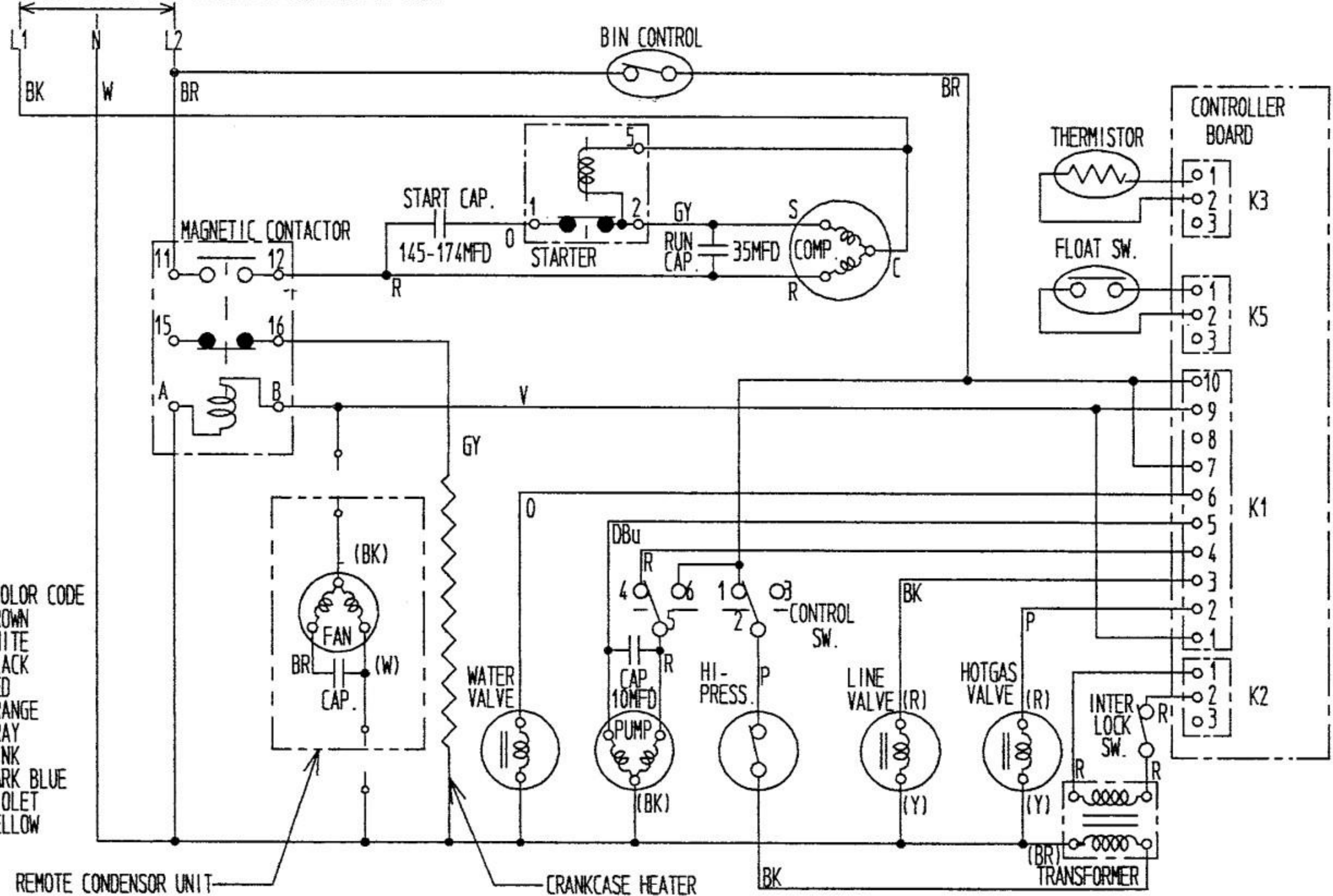


- WIRE COLOR CODE
- BR - BROWN
 - W - WHITE
 - BK - BLACK
 - R - RED
 - O - ORANGE
 - GY - GRAY
 - P - PINK
 - DBU - DARK BLUE
 - V - VIOLET
 - Y - YELLOW



208-230/60/1 (3 WIRE WITH NEUTRAL FOR 115V)



- WIRE COLOR CODE
- BR - BROWN
 - W - WHITE
 - BK - BLACK
 - R - RED
 - O - ORANGE
 - GY - GRAY
 - P - PINK
 - DBu - DARK BLUE
 - V - VIOLET
 - Y - YELLOW

REMOTE CONDENSOR UNIT

CRANKCASE HEATER

BK

TRANSFORMER

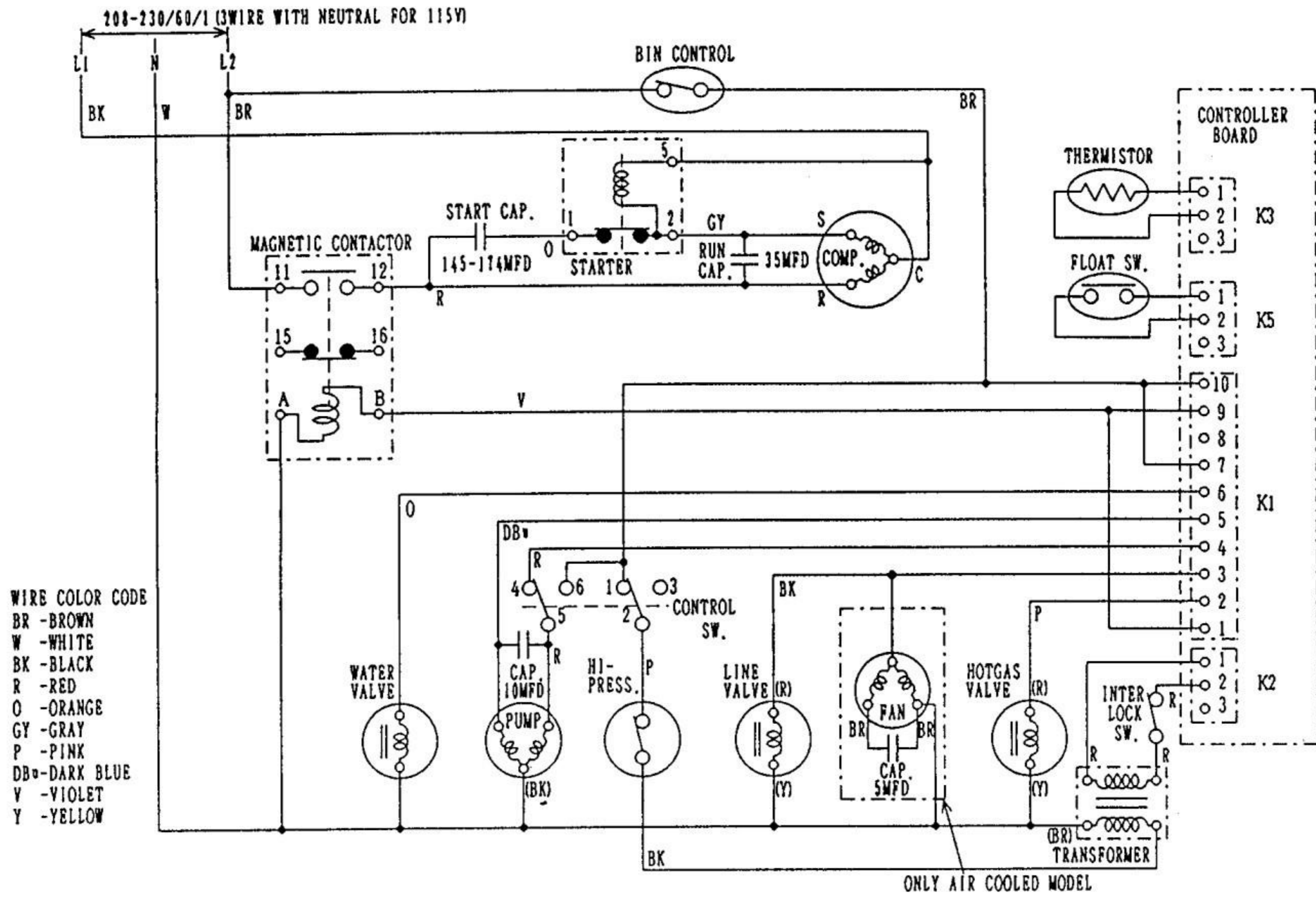
CONTROLLER BOARD

K3

K5

K1

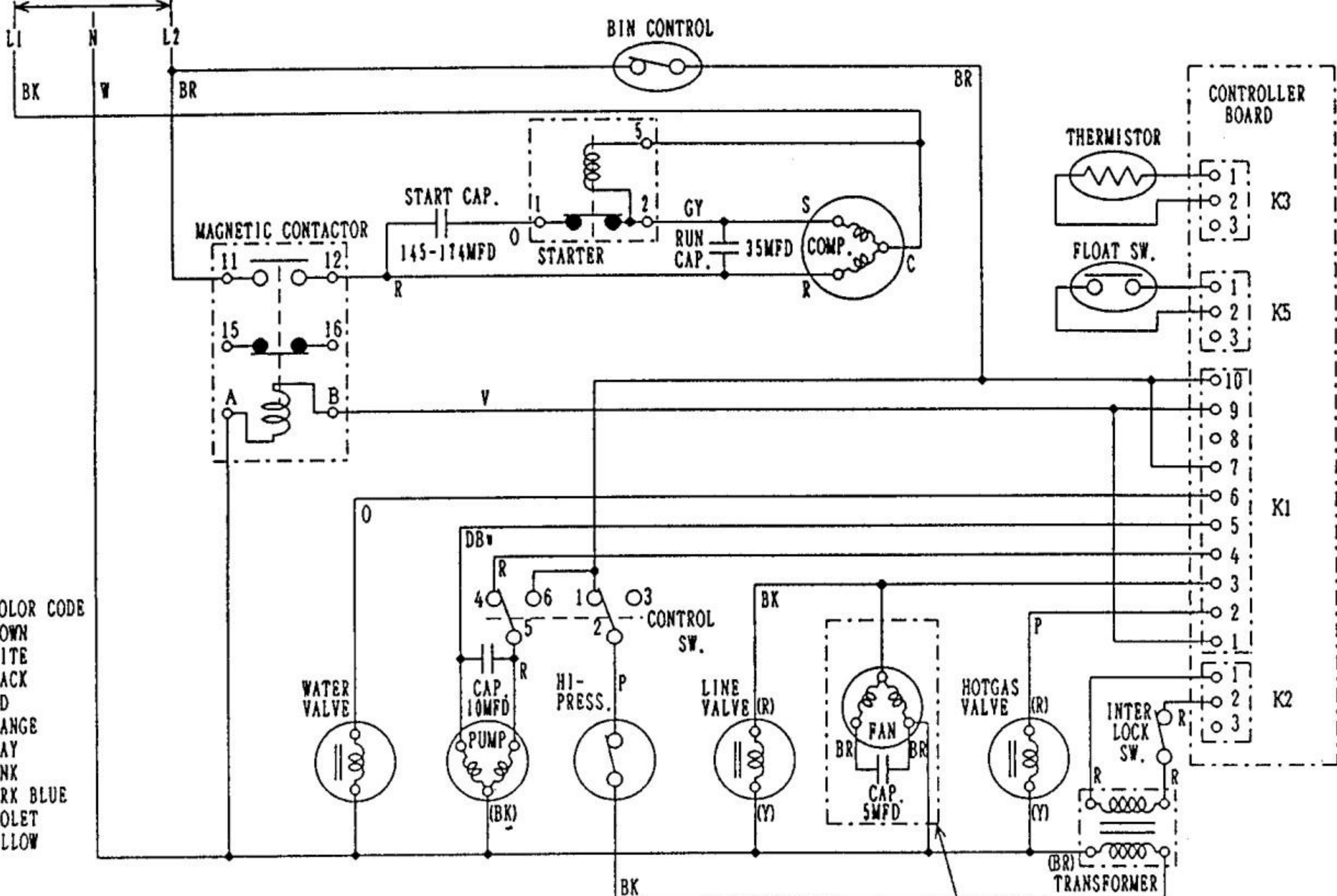
K2



WIRE COLOR CODE
 BR - BROWN
 W - WHITE
 BK - BLACK
 R - RED
 O - ORANGE
 GY - GRAY
 P - PINK
 DB - DARK BLUE
 V - VIOLET
 Y - YELLOW

ONLY AIR COOLED MODEL

208-230/60/1 (3WIRE WITH NEUTRAL FOR 115V)



- WIRE COLOR CODE
- BR - BROWN
 - W - WHITE
 - BK - BLACK
 - R - RED
 - O - ORANGE
 - GY - GRAY
 - P - PINK
 - DB - DARK BLUE
 - V - VIOLET
 - Y - YELLOW

ONLY AIR COOLED MODEL