



Illustrated Parts Manual for Food Slicer

Model
VA 2000
VA 4000

Jaccard Corporation

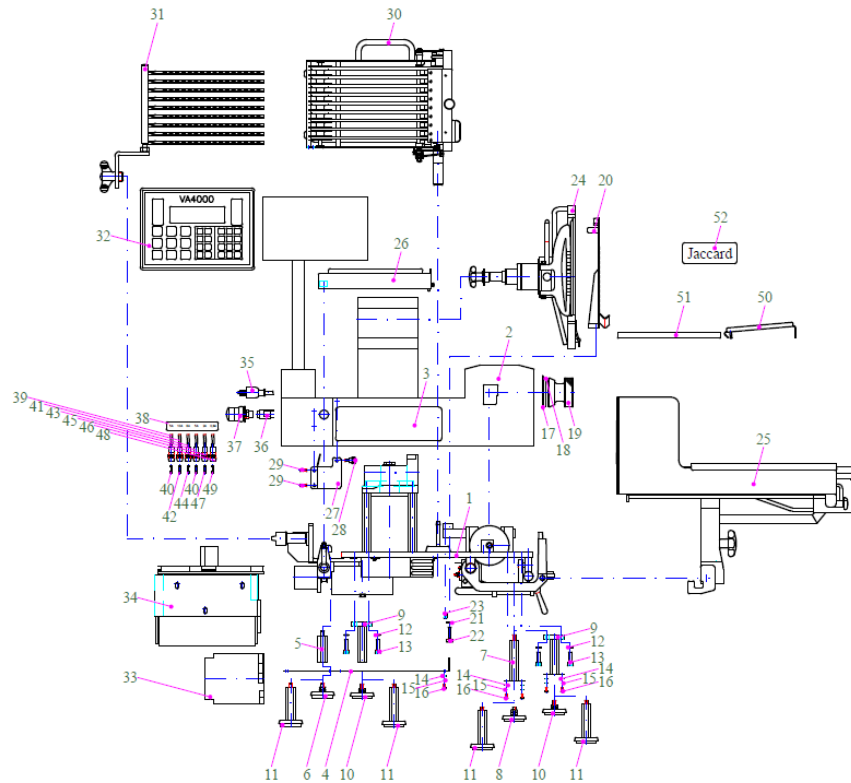
70 Commerce Drive
Rochester, NY 14623
Telephone 1-716-825-3814

Contents

1. EXPLODED DRAWINGS AND PART LISTINGS	3
1.1. DRAWING 1: MACHINE BODY – BASE	3
1.2. DRAWING 2: MACHINE BODY – COMPLETE	5
1.3. DRAWING 3: DISPLAY SUPPORT TUBE	6
1.4. DRAWING 4: STACKING DEVICE BASE PLATE	7
1.5. DRAWING 5: MAGNETIC SOLENOID ASSEMBLY	8
1.6. DRAWING 6: LIGHT BARRIER FOR STACKING DEVICE	9
1.7. DRAWING 7: STOP PIN FOR CHAIN ASSEMBLY	10
1.8. DRAWING 8: BUFFER 1	10
1.9. DRAWING 9: BUFFER 2	11
1.10. DRAWING 10: PIN FOR PIVOT BEARINGS	11
1.11. DRAWING 11: METAL PLATE FOR MICRO SWITCH ASSEMBLY	12
1.12. DRAWING 12: DEFLECTION ROLLER (2 PER MACHINE)	12
1.13. DRAWING 13: STEP MOTOR FOR RECEIVING PLATE	13
1.14. DRAWING 14: GUIDED MECHANISM FOR RECEIVING PLATE	14
1.15. DRAWING 15: STACKING DEVICE ASSEMBLY	15
1.16. DRAWING 16: CARRIAGE SLIDING SUPPORT ASSEMBLY	16
1.17. DRAWING 17: CARRIER FOR CARRIAGE DRIVE	18
1.18. DRAWING 18: CHAIN FRAME DRIVE	19
1.19. DRAWING 19: SYNCHRONIZING PLATE ASSEMBLY (TOP)	20
1.20. DRAWING 20: SYNCHRONIZING PLATE ASSEMBLY (BOTTOM)	21
1.21. DRAWING 21: COVER FOR CHAIN DRIVE BEARING	21
1.22. DRAWING 22: STEP MOTOR FOR CHAIN DRIVE	22
1.23. DRAWING 23: CHAIN DRIVE ASSEMBLY	23
1.24. DRAWING 25: PRESS ROLLER ASSEMBLY	24
1.25. DRAWING 26: DEFLECTING COMB BRACKET	25
1.26. DRAWING 27: INDEX MECHANISM ASSEMBLY	26
1.27. DRAWING 28: ADJUSTING BLOCK ASSEMBLY	28
1.28. DRAWING 29: INDEX GUIDE STRAP ASSEMBLY	29
1.29. DRAWING 30: THICKNESS PLATE SUPPORT ASSEMBLY	30
1.30. DRAWING 31: POTENTIOMETER ASSEMBLY	30
1.31. DRAWING 32: CARRIAGE CHAIN TENSIONER ASSEMBLY	31
1.32. DRAWING 33: CHAIN WHEEL CARRIER ASSEMBLY	32
1.33. DRAWING 34: CHAIN DRIVE COVER PLATE	33
1.34. DRAWING 38: TENSIONER ASSEMBLY	34
1.35. DRAWING 39: DEFLECTION ROLLER FOR BASE PLATE	35
1.36. DRAWING 40: CARRIAGE ASSEMBLY (MEDIUM)	36
1.37. DRAWING 43: PRODUCT SUPPORT ARM (MEDIUM)	37
1.38. DRAWING 45: DRIVING UNIT FOR END PIECE HOLDER (MEDIUM)	38
1.39. DRAWING 46: LOWER FOOD PLATE	40
1.40. DRAWING 47: END PIECE HOLDER ASSEMBLY	41
1.41. DRAWING 50: CARRIAGE SUPPORT ARM ASSEMBLY	42
1.42. DRAWING 51: BLADE GUARD ASSEMBLY	43
1.43. DRAWING 52: DEFLECTOR ASSEMBLY	44
1.44. DRAWING 53: MOTOR ASSEMBLY	45
1.45. DRAWING 54: BLADE HUB ASSEMBLY	46
1.46. DRAWING 55: FOOT ASSEMBLY	47

1. Exploded Drawings and Part Listings

1.1. Drawing 1: Machine Body – Base

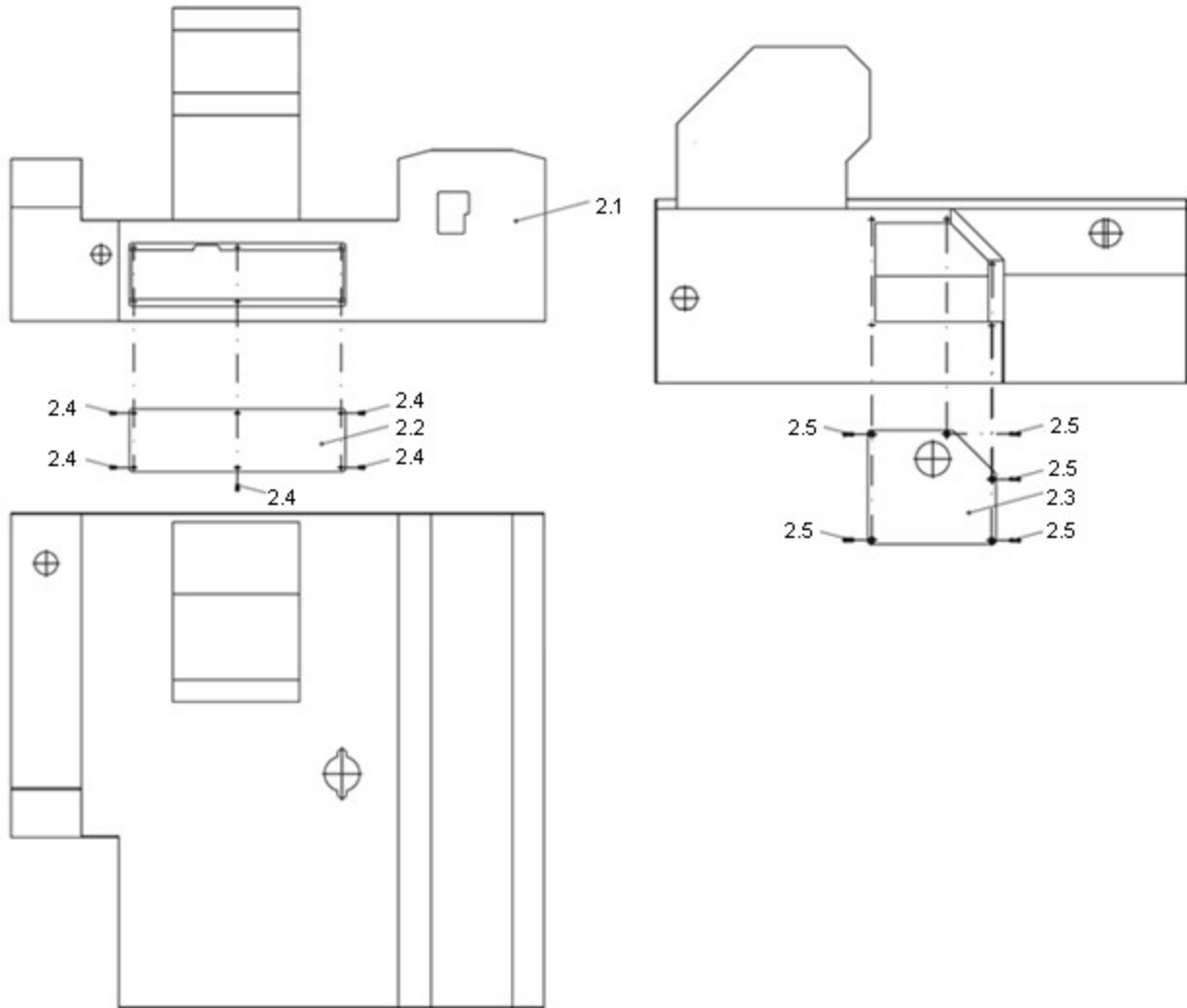


REF. #	DESCRIPTION	PART#
1	Base plate	20Z000J00
2	Machine body complete	20K001J01
3	Cover plate	63.007.90
4	Bottom plate	30.016.00
5	Foot complete	20K002J00
6	Rubber foot for foot	20Z002.00
7	Foot long complete	20K003J00
8	Rubber foot for foot long	20Z003.00
9	Foot short complete	20K004J00
10	Rubber foot for foot short	20Z004.00
11	Foot assembly (Drawing 35)	20Z007J00
12	Toothed washer	556797084
13	Cylinder screw	609120825

14	washer	590125044
15	Toothed washer	556797043
16	Oval head screw with cross recess	607985408
17	Washer for scale knob	14.110.00
18	Sliding disk for scale knob	52.052.20
19	Scale knob	20K376J00
20	Thickness plate assembly	20K300J00
21	Washer	590125085
22	Hex screw	609330830
23	Hexagon socket set screw + taper cap	549130812
24	Blade Guard Assembly	20K750.00
25	Carriage Assembly (medium)	20K650J10
26	Stacking plate	15K500.03
27	Cover guide for stacking plate	20.020J51
28	Knurled screw	20.020J55
29	Shaft screw with slot	604270616
30	Chain Drive Assembly	20K200J10
31	Stacking Device Assembly	20K080.00
32	Display VA-4000	51.200.02
33	Relay board 110 Volt	51.200.31
34	Slide-in electronics complete	51K200.40
35	Power cable	51.901.80
36	Contactator AT	51.007.04
37	Emergency stop	51.007.08
38	Safety sign	63.007J80
39	Fuse holder-complete 5A	20K800J00
40	Fuse 5A	20.800J01
41	Fuse holder-complete 10A	20K800J10
42	Fuse 10A	20.800J11
43	Fuse holder-complete 8A	20K800J20
44	Fuse 8A	20.800J21
45	Fuse holder-complete 5A	20K800J00
46	Fuse holder-complete 2A	20K800J40
47	Fuse 2A	20.800J41
48	Fuse holder-complete 0,8A	20K800J50

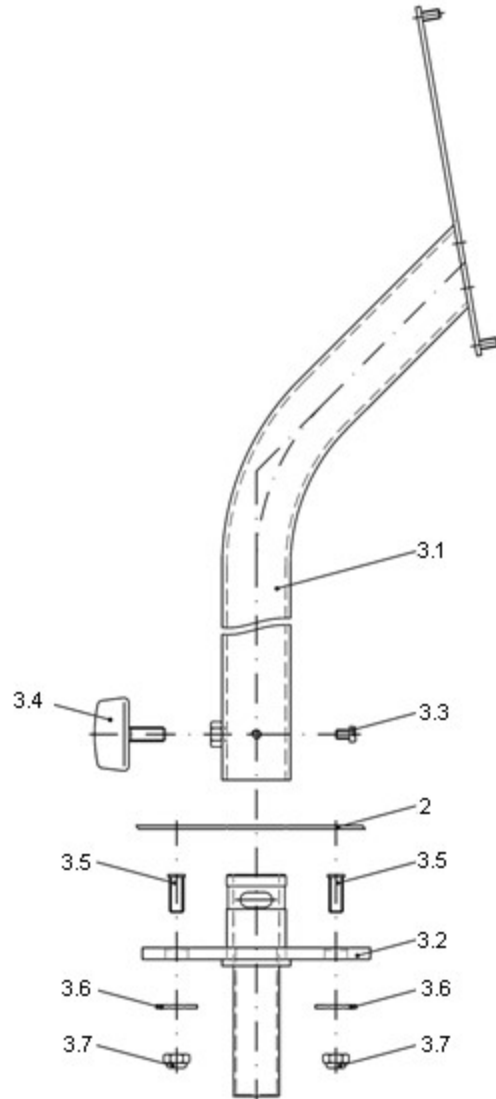
49	Fuse 2A	20.800J51
50	Drain pan front part	20Z020J10
51	Drain pan rear part	20.020J20
52	Jaccard company logo	63.007J60

1.2. **Drawing 2: Machine Body – Complete**



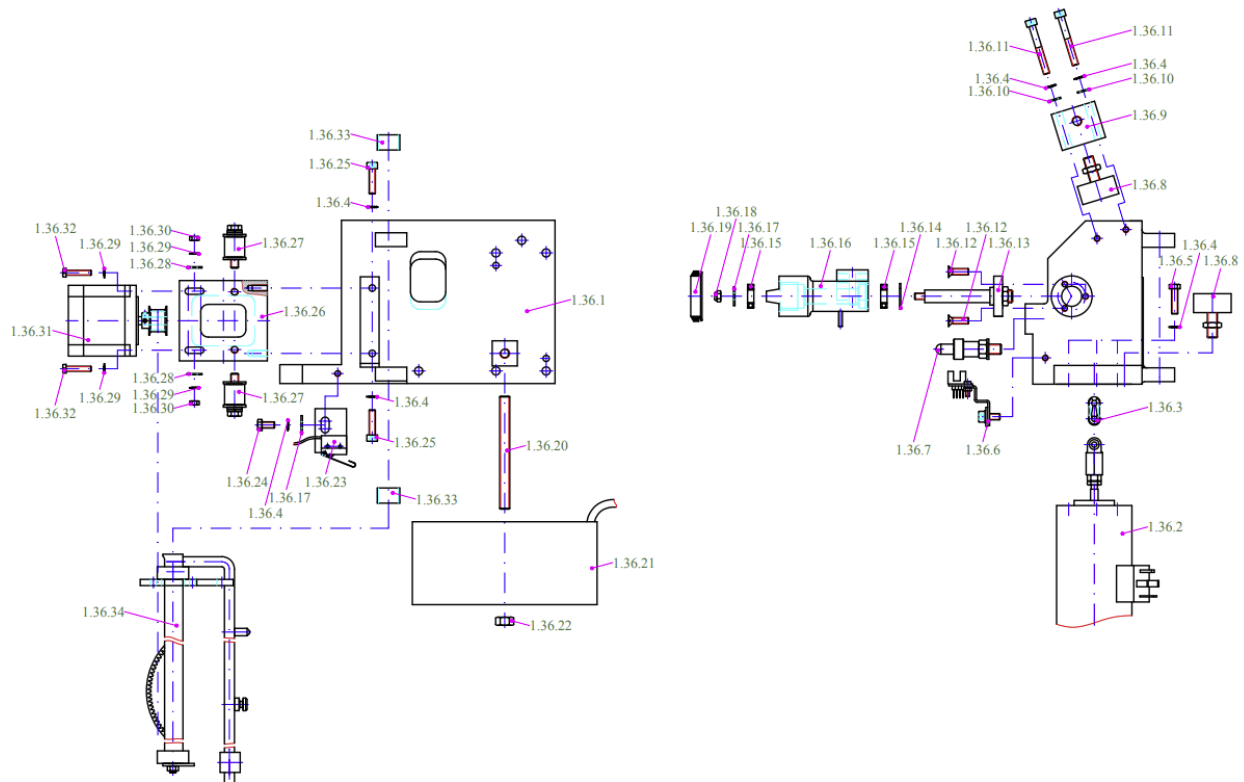
REF. #	DESCRIPTION	PART#
2.1	Machine body assembly	20Z001J01
2.2	Cover plate for side plate (front)	20.001.40
2.3	Cover plate for stacking device	20.001J50
2.4	Countersunk screw	609630306
2.5	Countersunk screw	609630310

1.3. **Drawing 3: Display Support Tube (VA4000 only)**



REF. #	DESCRIPTION	PART#
2	Holding tube body assembly (Drawing 2)	20K001J01
3.1	Holding tube assembly	20Z009.00
3.2	Holding tube mount assembly	15Z800.00
3.3	Cylinder screw	600840406
3.4	Wing screw	57.002.10
3.5	Welded threaded bolt	544000616
3.6	Washer	599021065
3.7	Hex nut	609850006

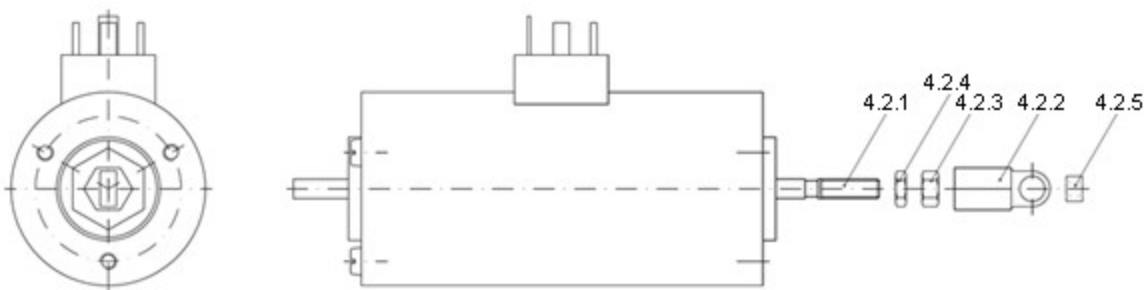
1.4. Drawing 4: Stacking Device Base Plate



REF. #	DESCRIPTION	PART#
1.36.1	Stacking device base plate	20.050.00
1.36.2	Magnetic solenoid assembly (Drawing 5)	20K807.00
1.36.3	Chain lock	75.008.10
1.36.4	Toothed washer	556797055
1.36.5	Hex screw	609330520
1.36.6	Light barrier for stacking device assembly (Drawing 6)	20K806.10
1.36.7	Chain frame mount assembly	20.061.01
1.36.8	Buffer 1 assembly (Drawing 8)	20K058.01
1.36.9	Holder for buffer	20.054.00
1.36.10	Washer	590125051
1.36.11	Cylinder screw	609120540
1.36.12	Countersunk screw	609630515
1.36.13	Pin bearing assembly (Drawing 10)	20K051.00
1.36.14	Retaining ring	590472019
1.36.15	Deep groove ball bearing	50.618002
1.36.16	Pivot bearings assembly	20K052.00

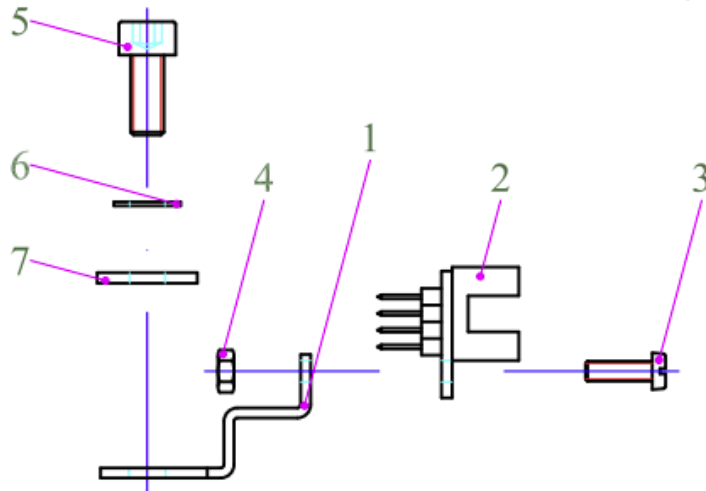
1.36.17	Washer	599021053
1.36.18	Hex nut	609850005
1.36.19	Shaft seal	56.223278
1.36.20	Threaded rod for transformer	20.057.00
1.36.21	Transformer for VA2000 Transformer for VA4000	13.155.62 13.155.90
1.36.22	Hex nut	609340008
1.36.23	Metal plate for micro switch assembly (Drawing 11)	15Z810.00
1.36.24	Hex screw	609330510
1.36.25	Cylinder screw	609120516
1.36.26	Bearing for step motor	15.051.00
1.36.27	Deflection roller for stacking device assembly(Drawing 12)	20K056.00
1.36.28	Washer	599021E43
1.36.29	Toothed washer	556797043
1.36.30	Hex nut	609340004
1.36.31	Step motor for receiving plate assembly (Drawing 13)	15K002.72
1.36.32	Cylinder screw	600840420
1.36.33	Dry plain bearing	61.001612
1.36.34	Guiding mechanism for receiving tray assembly (Drawing 14)	20K151.00

1.5. Drawing 5: Magnetic Solenoid Assembly



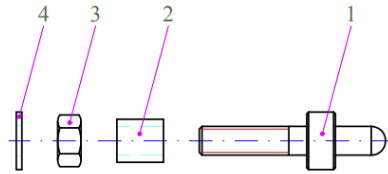
REF. #	DESCRIPTION	PART#
4.2.1	Magnetic solenoid	51.071.00
4.2.2	Adaptor for magnetic solenoid	15.059.00
4.2.4	Hex nut	604390006
4.2.5	Positioning bush	60179428A

1.6. **Drawing 6: Light Barrier for Stacking Device**



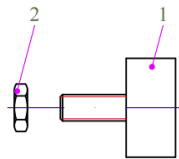
	DESCRIPTION	PART#
1	Plate for light barrier – stacking device	20.806.10
2	Light barrier	51.202.00
3	Cylinder screw	600840310
4	Hex nut	609340003
5	Cylinder screw	609120512
6	Toothed washer	556797055
7	Washer	599021053

1.7. Drawing 7: Stop Pin for Chain Assembly



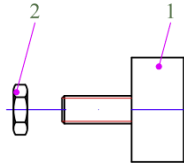
REF. #	DESCRIPTION	PART#
1	Lock for chain frame	20.061.01
2	Sleeve for locking chain frame	20.062J00
3	Hex nut	609340008
4	Washer	590125085

1.8. Drawing 8: Buffer 1



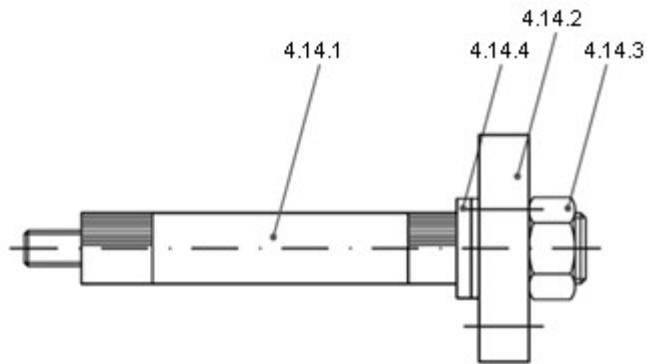
REF. #	DESCRIPTION	PART#
1	Buffer 1	58.352302
2	Hex nut	609340008

1.9. Drawing 9: Buffer 2



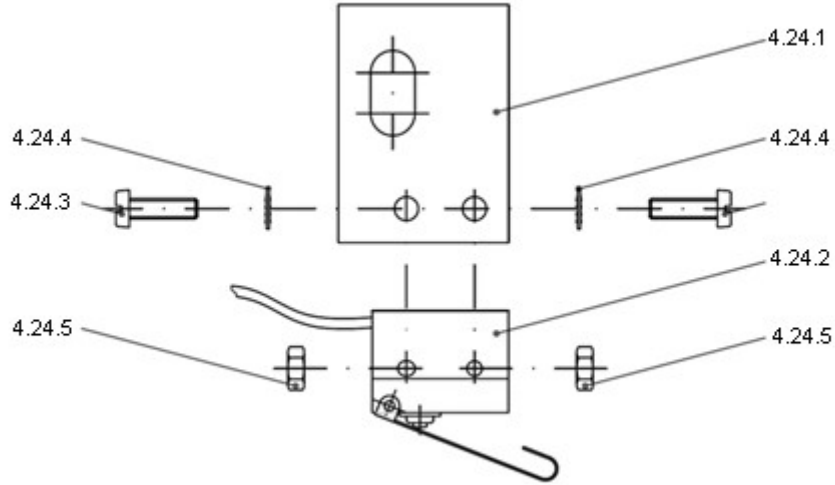
REF. #	DESCRIPTION	PART#
1	Buffer 2	58.352302
2	Hex nut	609340008

1.10. Drawing 10: Pin for Pivot Bearings



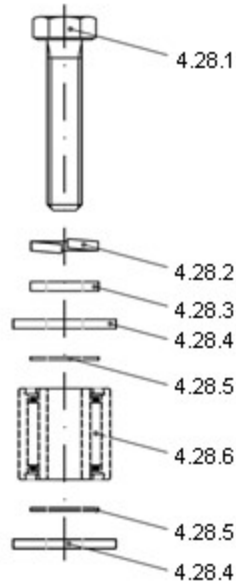
REF. #	DESCRIPTION	PART#
4.14.1	Bolt for pivot bearing	20.051.00
4.14.2	Flange for pivot bearing	20.051.11
4.14.3	Hex nut for pivot bearing	20.051.20
4.14.4	Washer for pivot bearing	20.051.30

1.11. Drawing 11: Metal Plate for Micro Switch Assembly



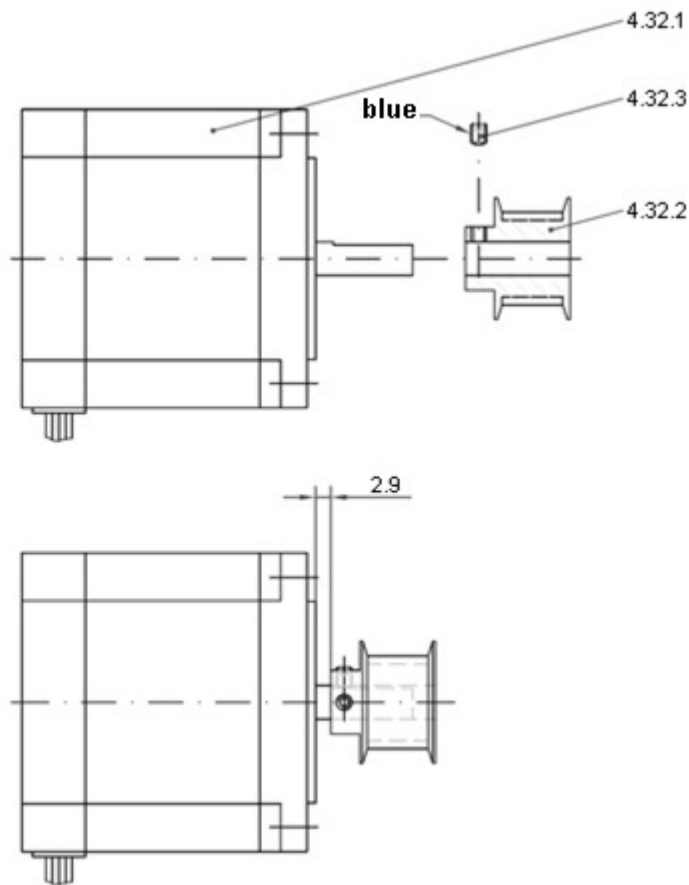
REF. #	DESCRIPTION	PART#
4.24.1	Metal plate for micro switch	15.810.00
4.24.2	Quick break switch	51.000.10
4.24.3	Cylinder head screw	600840310
4.24.4	Toothed washer	556797033
4.24.5	Hex nut	609340003

1.12. Drawing 12: Deflection Roller (2 per machine)



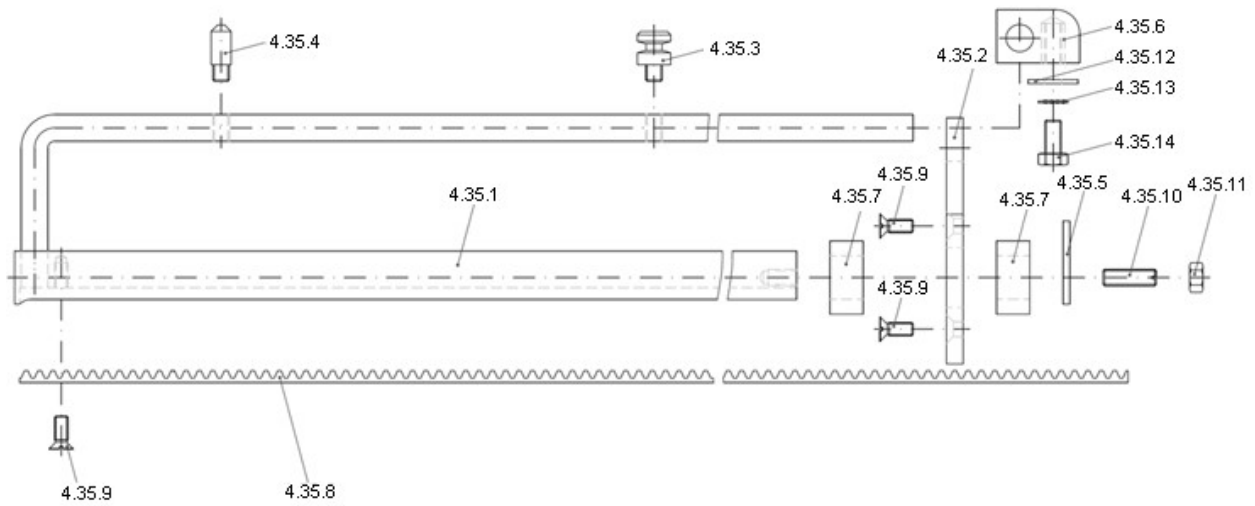
REF. #	DESCRIPTION	PART#
4.28.1	Hex screw	609330630
4.28.2	Spring washer	590127006
4.28.3	Washer	590125065
4.28.4	Washer	599021065
4.28.5	Spring washer	590988061
4.28.6	Needle bearing	50.NK1616

1.13. Drawing 13: Step Motor for Receiving Plate



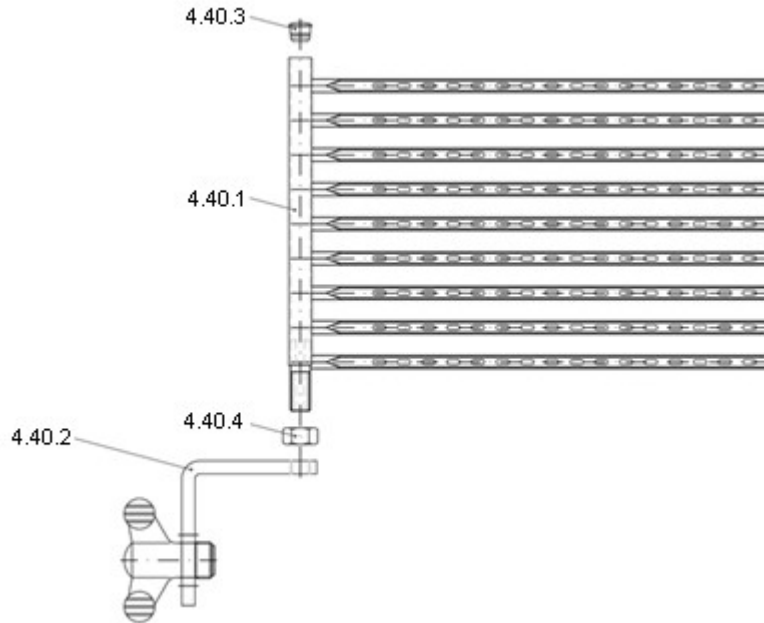
REF. #	DESCRIPTION	PART#
4.32.1	Step motor	15.002.75
4.32.2	Synchronizing disc	15.011635
4.32.3	Threaded pin	549160304

1.14. Drawing 14: Guided Mechanism for Receiving Plate



REF. #	DESCRIPTION	PART#
4.35.1	Guiding mechanism for receiving tray	20Z151.00
4.35.2	Guiding bracket	20.153.00
4.35.3	Locking mechanism 1 for receiving tray	15.506.00
4.35.4	Locking mechanism 2 for receiving tray	15.507.00
4.35.5	Switch plate for micro switch	15.809.00
4.35.6	Synthetic guide for tray	15.811.00
4.35.7	Rubber ring	17.050.10
4.35.8	Brecoflex Toothed belt	15.503.50
4.35.9	Countersunk screw	609630411
4.35.10	Threaded pin	545510516
4.35.11	Hex nut	609340005
4.35.12	Washer	599021053
4.35.13	Toothed washer	556797055
4.35.14	Hex screw	609330510

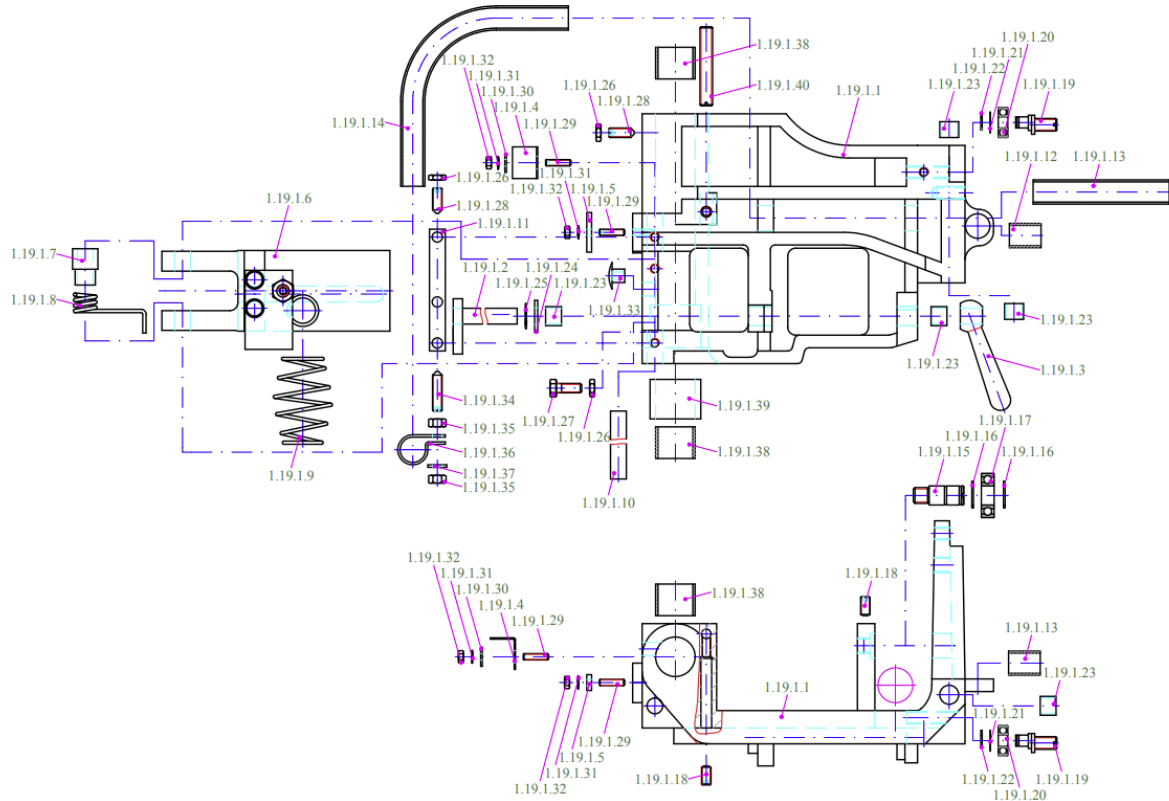
1.15. **Drawing 15: Stacking Device Assembly**



REF. #	DESCRIPTION	PART#
4.40.1	Stacking device assembly	20K081.00
4.40.2	Tilting joint assembly	20K084.00
4.40.3	Nylon plug for stacking device	15.605.00
4.40.4	Hex nut	15.602.00

1.16.

Drawing 16: Carriage Sliding Support Assembly

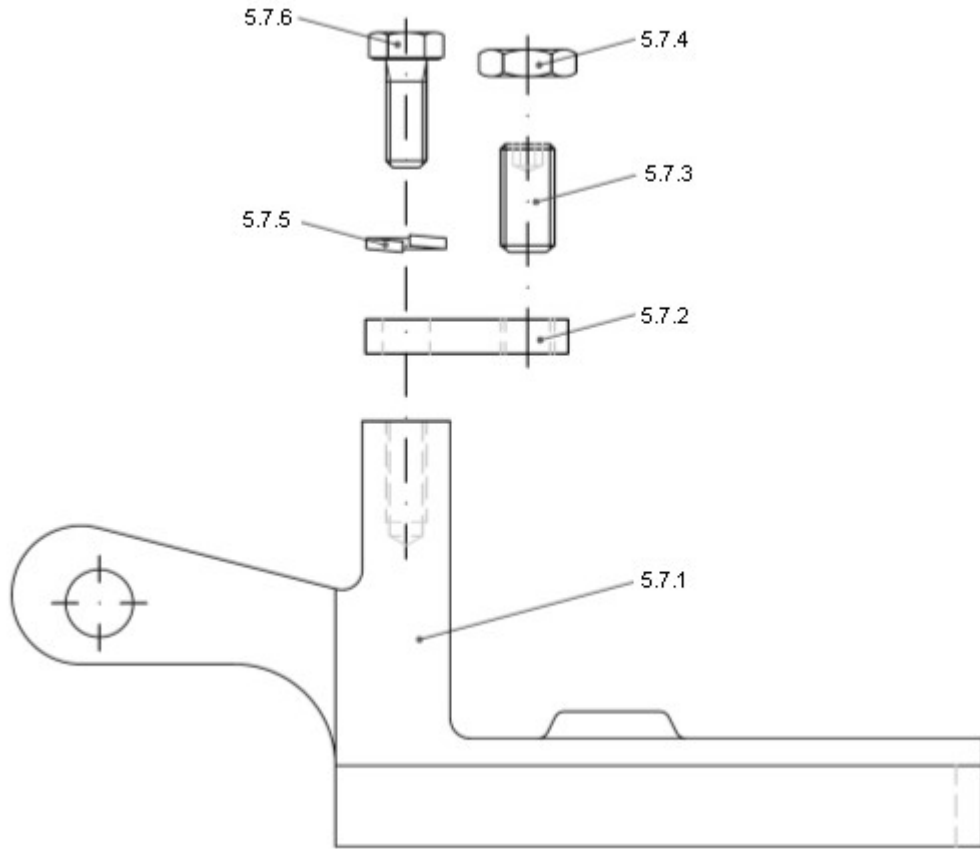


REF. #	DESCRIPTION	PART#
1.19.1.1	Sliding support	20.100.00
1.19.1.2	Carriage locking pin	20Z101.00
1.19.1.3	Tapered handle	57.204.13
1.19.1.4	Contact sheet for light barrier	20.807.00
1.19.1.5	Tensioning strap	15.002.65
1.19.1.6	Carrier for Carriage drive assembly (Drawing 17)	20K110.00
1.19.1.7	Spring holder	20.105.00
1.19.1.8	Torsion spring	20.106.00
1.19.1.10	Connecting bolt	20.104.00
1.19.1.11	Strap	20.107.00
1.19.1.12	Short tube	20.112.00
1.19.1.13	Long tube	20.113.00
1.19.1.14	Curved tube	20.114.00
1.19.1.15	Bolt for carriage drive	20.103.00
1.19.1.16	Retaining ring	590471012

1.19.1.17	Deep groove ball bearing	50.6001RS
1.19.1.18	Threaded pin	549160612
1.19.1.19	Eccentric for roll holder	06.003.06
1.19.1.20	Deep groove ball bearing	50.0607RS
1.19.1.23	DU bushing	61.001010
1.19.1.24	Washer	590125105
1.19.1.25	Leveling washer for ball bearing	590101503
1.19.1.26	Hex nut	604390006
1.19.1.27	Hex screw	609330617
1.19.1.28	Threaded pin	549140616
1.19.1.29	Threaded pin	549130416
1.19.1.30	Washer	599021E43
1.19.1.31	Toothed washer	556797043
1.19.1.32	Hex nut	609340004
1.19.1.33	Cap	58.AK4058
1.19.1.34	Threaded pin	549140625
1.19.1.35	Hex nut	609340006
1.19.1.36	Mounting clip	51.903.08
1.19.1.37	Washer	590125065
1.19.1.38	DU bushing	61.222520
1.19.1.39	Slide bearing	61.253225
1.19.1.40	Threaded pin	545510850
1.19.1.21	Adjusting washer	590988071
1.19.1.22	Retaining ring	590471007
1.19.1.9	Conical Tension spring	52.001.00

1.17.

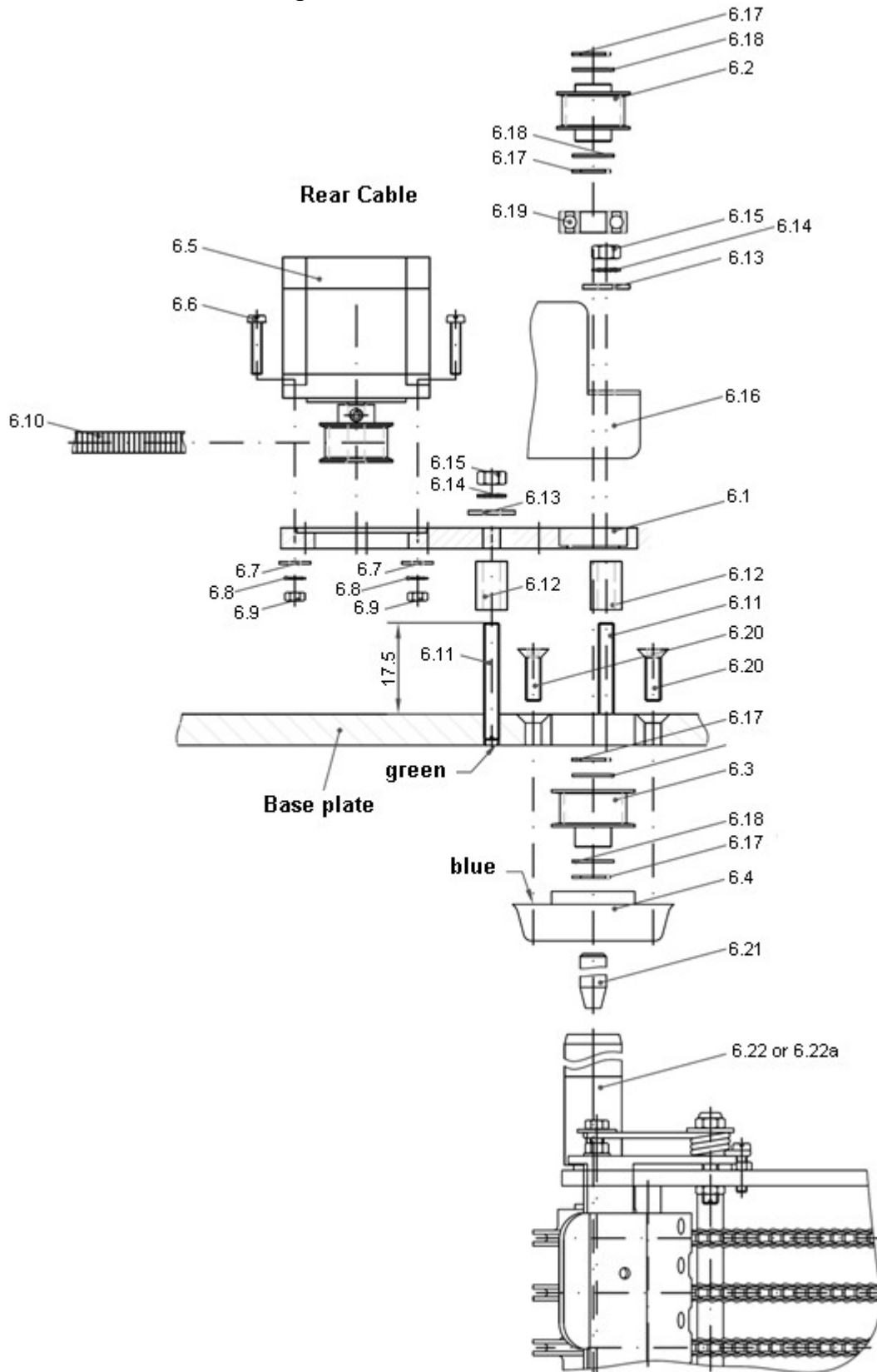
Drawing 17: Carrier for Carriage Drive



REF. #	DESCRIPTION	PART#
5.7.1	Carrier for carriage drive	20.110.00
5.7.2	Stop plate for carrier	20.111.00
5.7.3	Threaded pin	549130816
5.7.4	Hex nut	604390008
5.7.5	Spring washer	590127006
5.7.6	Hex screw	609330616

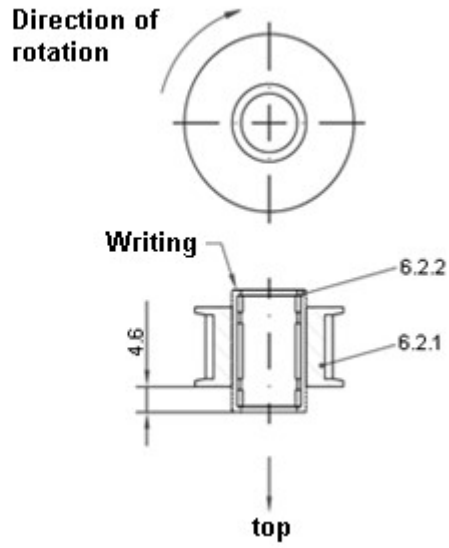
1.18.

Drawing 18: Chain Frame Drive



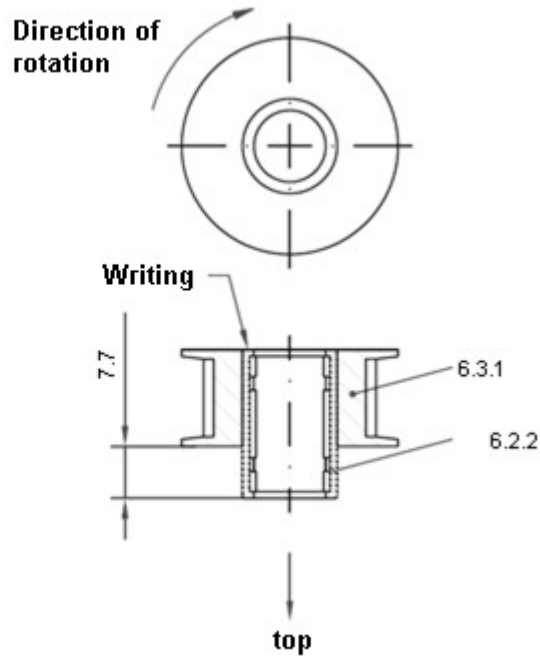
REF. #	DESCRIPTION	PART#
6.1	Plate	20.230.00
6.2	Synchronizing disc assembly (top) (Drawing 19)	15K016.14
6.3	Synchronizing disc assembly (bottom) (Drawing 20)	15K015.14
6.4	Gasket assembly (Drawing 21)	20K231.00
6.5	Stepmotor for chain frame drive (Drawing 22)	20K234.00
6.6	Cylindrical screw	600840420
6.7	Washer	599021E43
6.8	Toothed washer	556797043
6.9	Hex nut	609340004
6.10	Toothed belt	53.003.05
6.11	Threaded pin	545510645
6.12	Distance bushing	01.215.01
6.13	Washer	599021065
6.14	Toothed washer	556797065
6.15	Hex nut	609340006
6.16	Cable protection	20.233.00
6.17	Retaining ring	590471010
6.18	Adjusting washer	590988109
6.19	Deep groove ball bearing	50.6000RS
6.20	Countersunk screw	607991621
6.21	Driving axle for chain frame assembly	20.232.00
6.22	Chain frame assembly (Drawing 23)	20K200.00
6.22a	Chain frame assembly after serial # 2046005 (Drawing 23a)	20K200.05

1.19. **Drawing 19: Synchronizing Plate Assembly (Top)**



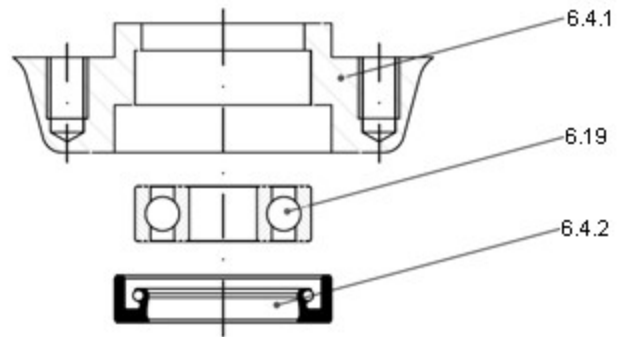
REF. #	DESCRIPTION	PART#
6.2.1	Synchronizing plate	15.016.14
6.2.2	Free wheel	50HFL1022

1.20. **Drawing 20: Synchronizing Plate Assembly (Bottom)**



REF. #	DESCRIPTION	PART#
6.3.1	Synchronizing plate	15.015.14
6.2.2	Free wheel	50HFL1022

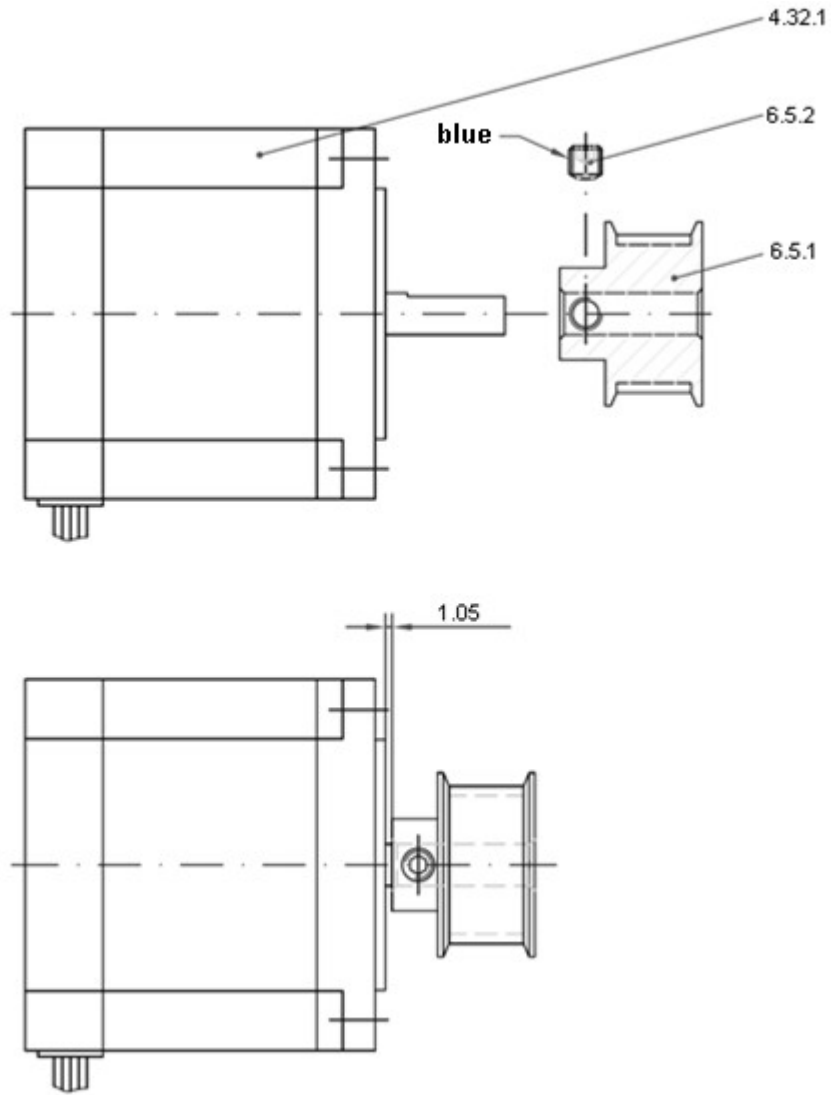
1.21. Drawing 21: Cover for Chain Drive Bearing



REF. #	DESCRIPTION	PART#
6.4.1	Gasket	20.231.00
6.4.2	Rotary shaft	56.223278
6.19	Deep groove ball bearing	50.6000RS

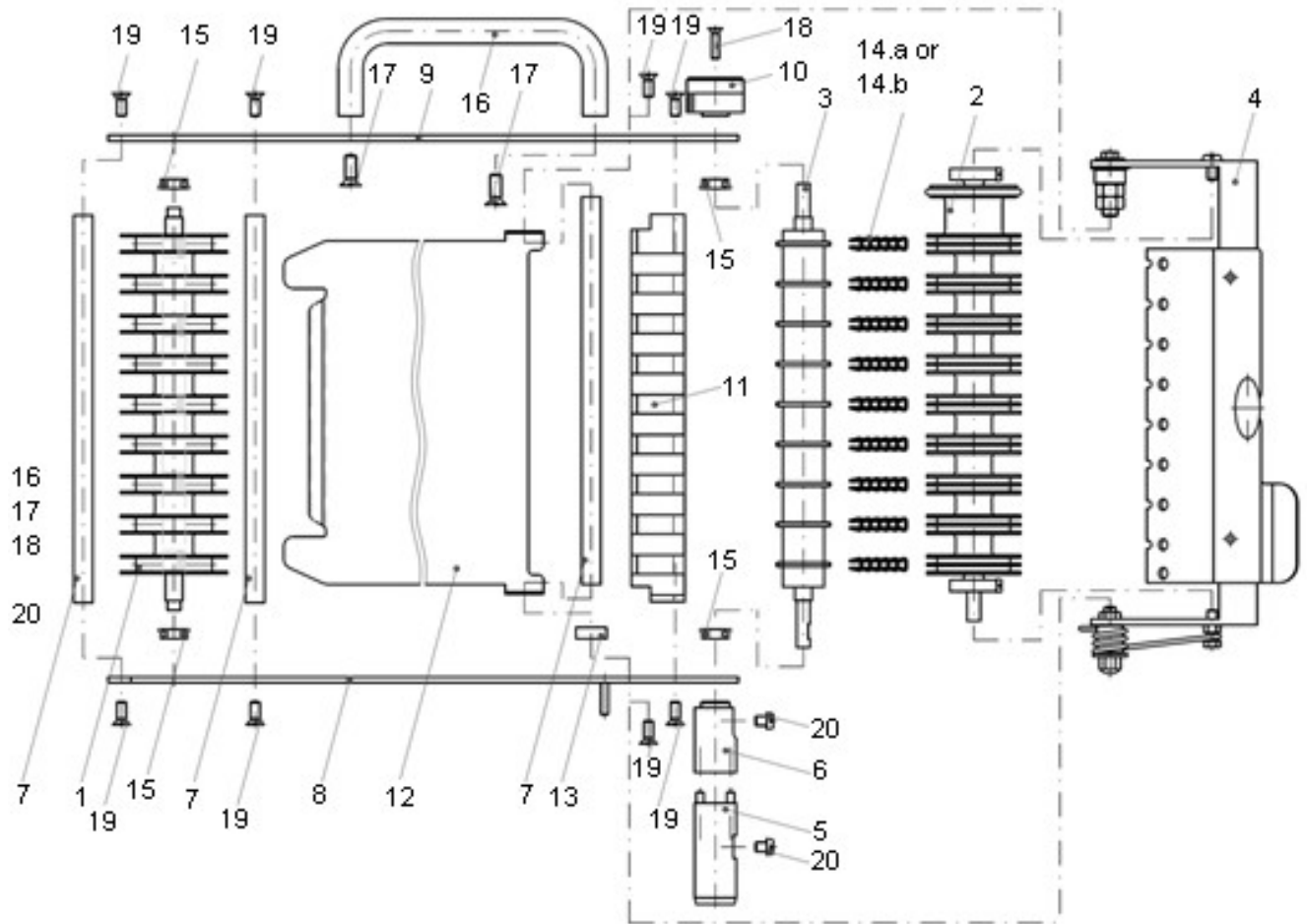
1.22.

Drawing 22: Step Motor for Chain Drive



REF. #	DESCRIPTION	PART#
6.5.1	Synchronizing plate	15.015635
6.5.2	Threaded pin	549160506
4.32.1	Step motor	15.002.75

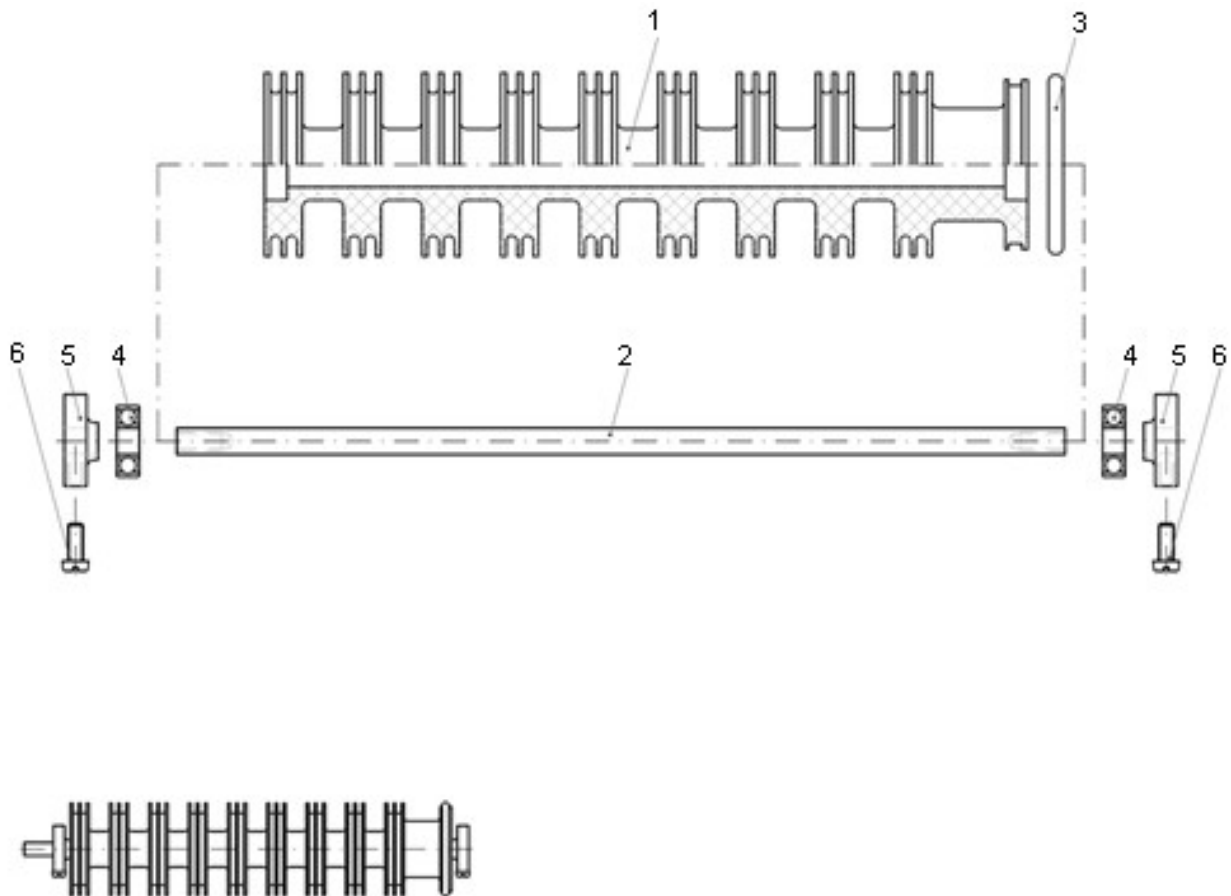
1.23. **Drawing 23: Chain Drive Assembly**



REF. #	DESCRIPTION	PART#
1	Guide roller assembly	20K202.10
2	Press roller assembly (Drawing XX)	20K203.06
3	Drive shaft assembly	20K204.10
4	Bracket for press roller (Drawing XX)	20K277.60
5	Lower coupler assembly	20K208.00
6	Upper coupler	20.209.00
7	Spacer rod for chain frame	20.206.10
8	Chain frame assembly - bottom	20Z210.10
9	Chain frame - upper	20.211.10
10	Friction ring	20.265.00
11	Guide rail	20.215.10
12	Chain guard	20.282.00

13	Spacer for chain guard	20.282.10
14a	Chain with spikes	20.220.00
14b	Chain for cheese	20.220.10
15	Bearing	50.F687RS
16	Handle	57.001.20
17	Countersunk screw	609630616
18	Countersunk screw	609630416
19	Countersunk screw	609630512
20	Cylindrical screw	600840506

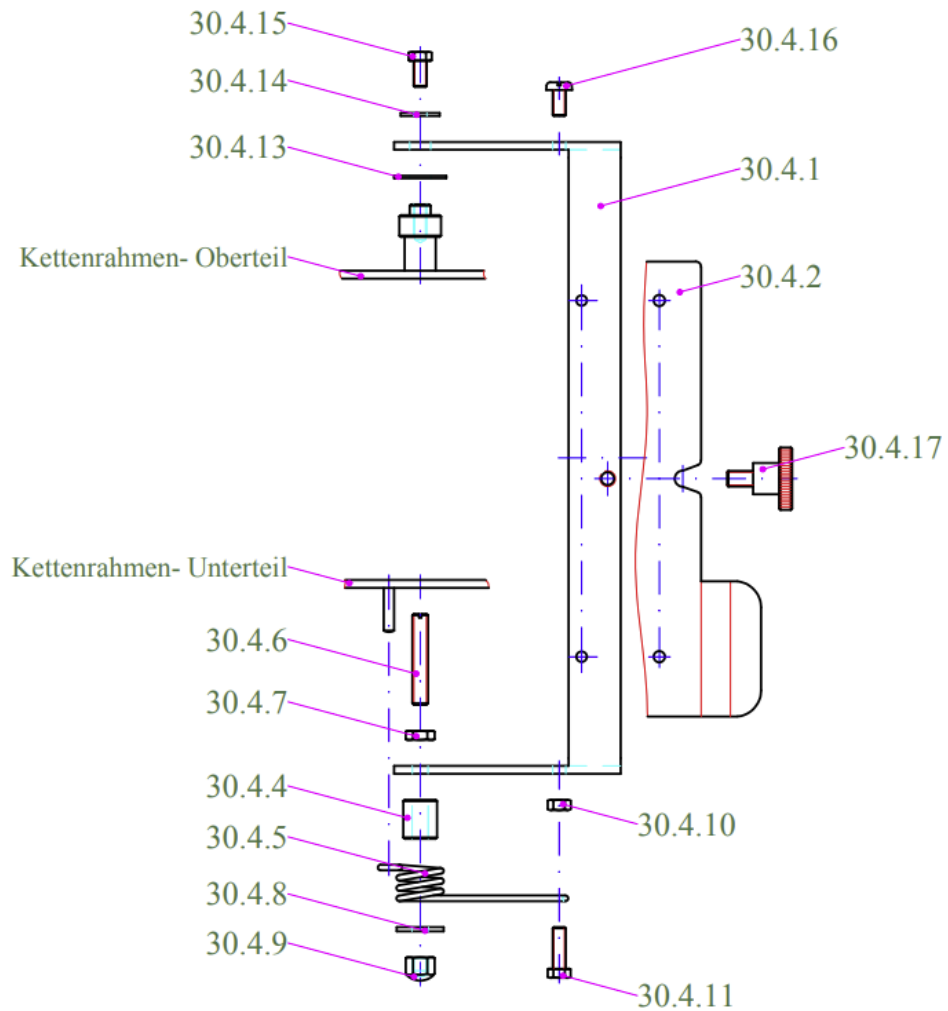
1.24. Drawing 25: Press Roller Assembly



REF. #	DESCRIPTION	PART#
1	Press roller	20.262.06
2	Axle for press roller	20.203.00

3	O-ring	65.040040
4	Deep groove bearing	50.N607RS
5	Spacer bushing for press roller	20.203.10
6	Cylindrical screw	600840411

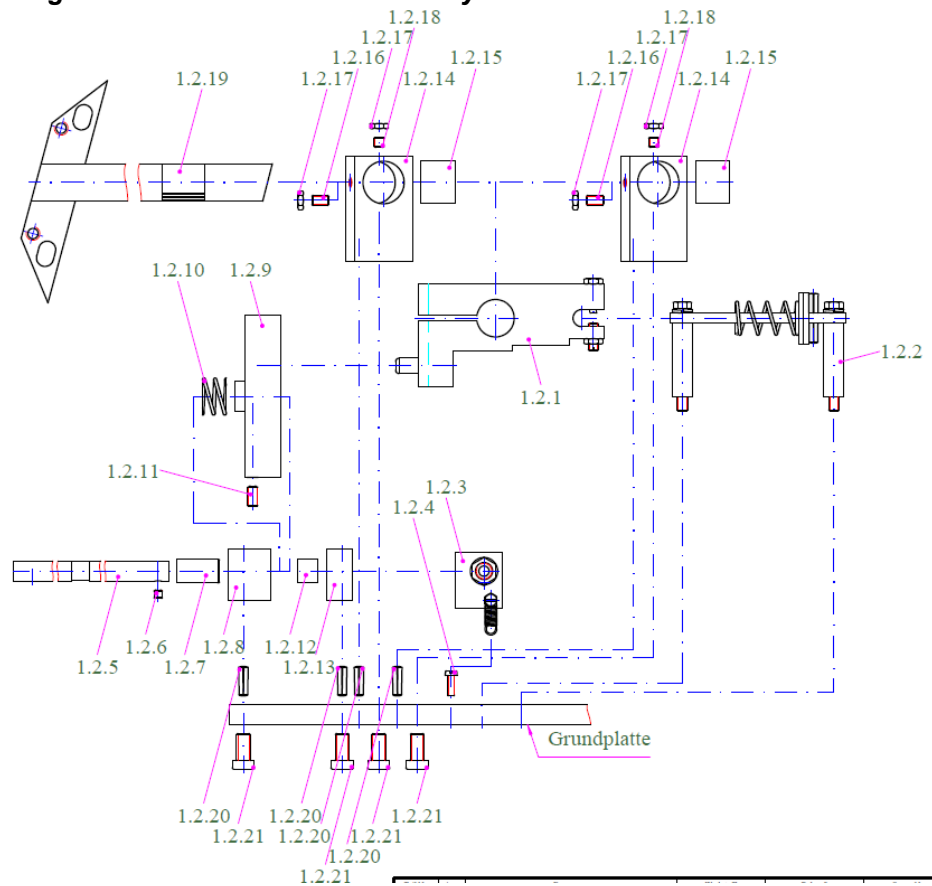
1.25. **Drawing 26: Deflecting Comb Bracket**



REF. #	DESCRIPTION	PART#
30.4.1	Bracket for deflection roller	20.277.50
30.4.2	Comb	20.207.06
30.4.4	Spring adjustment	20.213.10

30.4.5	Torsion spring	20.214.10
30.4.6	Threaded pin	545510635
30.4.7	Hex nut	604390006
30.4.8	Washer	599021065
30.4.9	Hex cap nut	609170007
30.4.10	Hex nut	609340005
30.4.11	Hex screw	609330516
30.4.13	Washer for chain frame	58.200802
30.4.14	Washer	599021053
30.4.15	Hex screw	609330510
30.4.16	Flat head screw	600850510
30.4.17	Wing screw	604640610

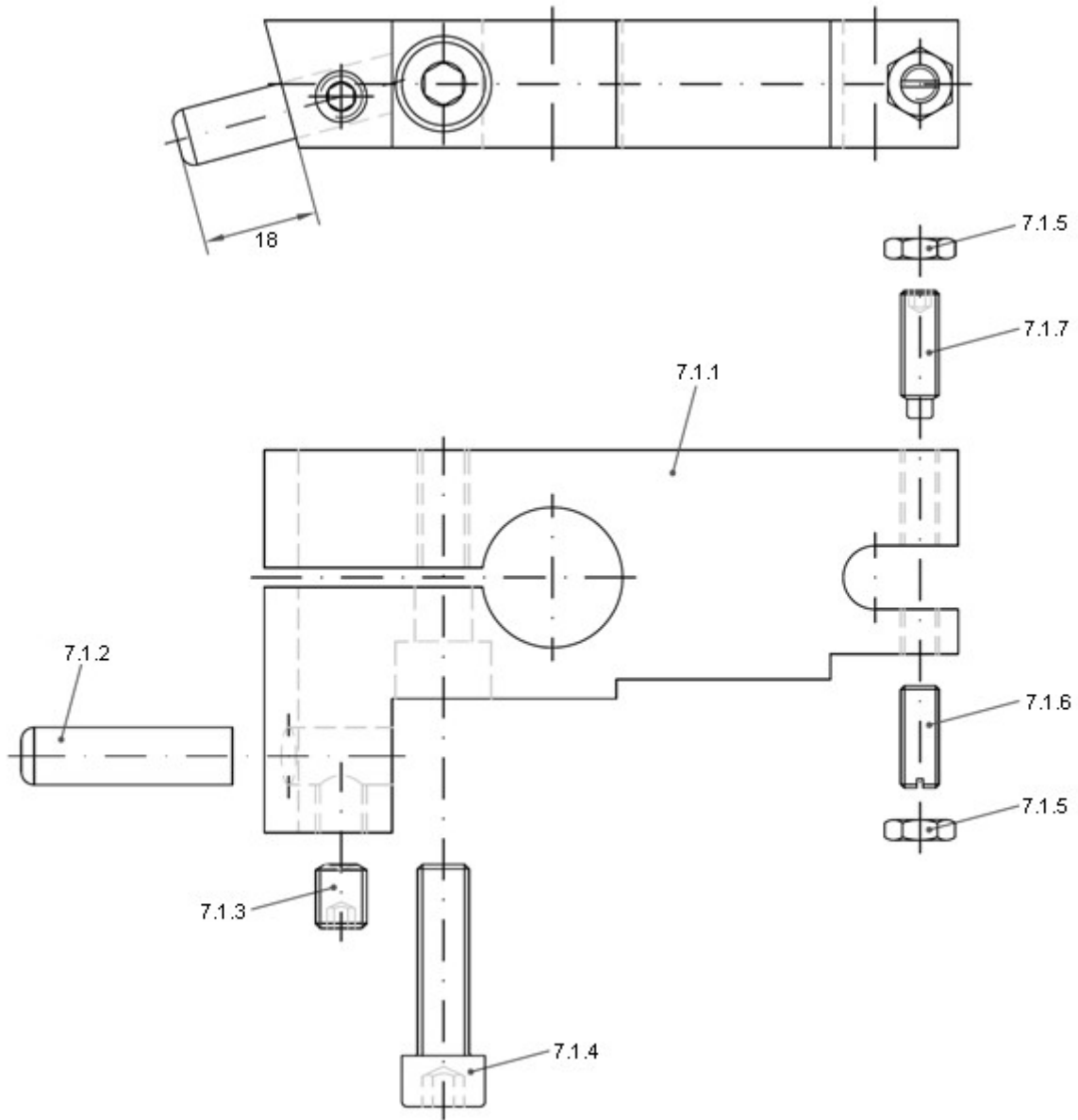
1.26. **Drawing 27: Index Mechanism Assembly**



REF. #	DESCRIPTION	PART#
1.2.1	Adjusting know assembly (Drawing 28)	20K350.00

1.2.2	Guide strap assembly (Drawing 29)	20K373.00
1.2.3	Potentiometer assembly (Drawing 31)	20K375.00
1.2.4	Hex screw	600840413
1.2.5	Bolt for spiral washer	20.371.00
1.2.6	Threaded pin	549160506
1.2.7	DU-bushing	61.001225
1.2.8	Spiral washer bearing	14.100.00
1.2.9	Spiral washer	20.372.00
1.2.10	Spring for spiral washer	52.022.00
1.2.11	Threaded pin	549160612
1.2.12	DU-bushing	61.001212
1.2.13	Adjusting bracket 1	15.102.00
1.2.14	Adjusting bracket 2	15.103.00
1.2.15	DU-bushing	61.222520
1.2.16	Hexagon socket set screw + taper cap M6x10mm	549160610
1.2.17	Hex nut M6	604390006
1.2.18	Hexagon socket set screw + taper cap M6x6mm	549160606
1.2.19	Stop plate support	20Z374.00
1.2.20	Grooved taper pin	541471516
1.2.21	Socket head screw	607984816

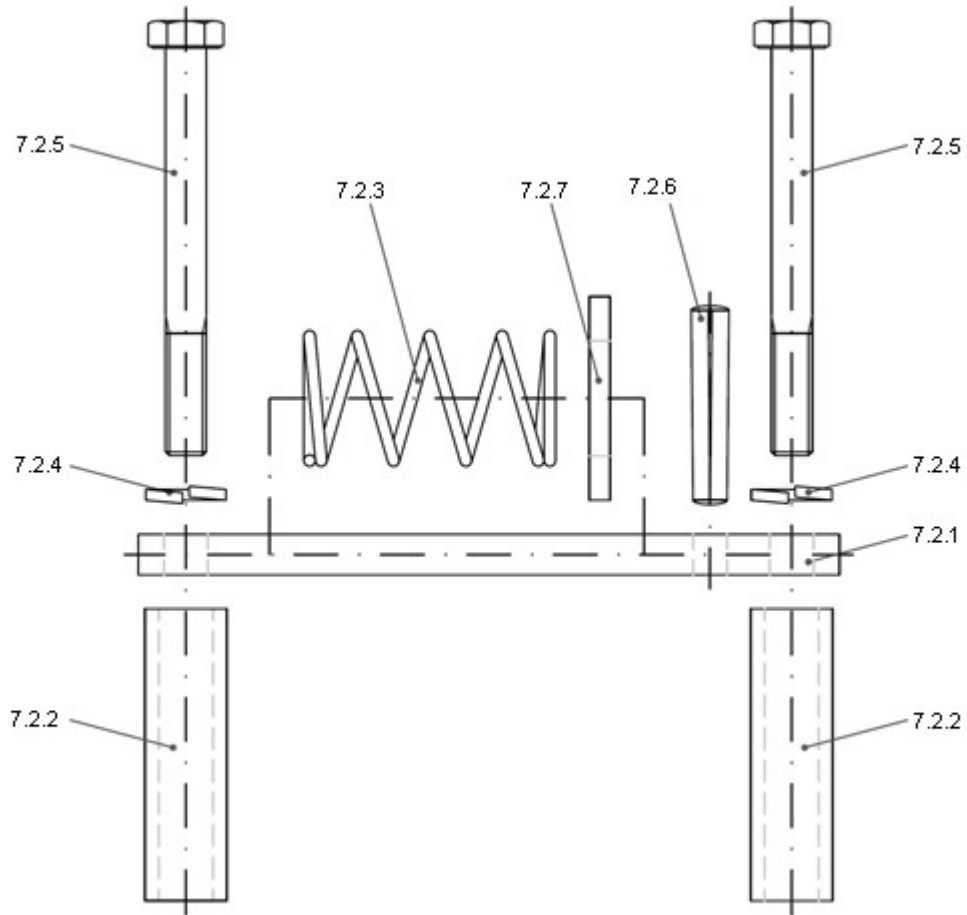
1.27. **Drawing 28: Adjusting Block Assembly**



REF. #	DESCRIPTION	PART#
7.1.1	Adjusting lever	20.350.00
7.1.2	Pin for spiral wheel	04.355.00
7.1.3	Threaded pin	549160810
7.1.4	Socket head screw	609120830
7.1.5	Hex nut	604390006

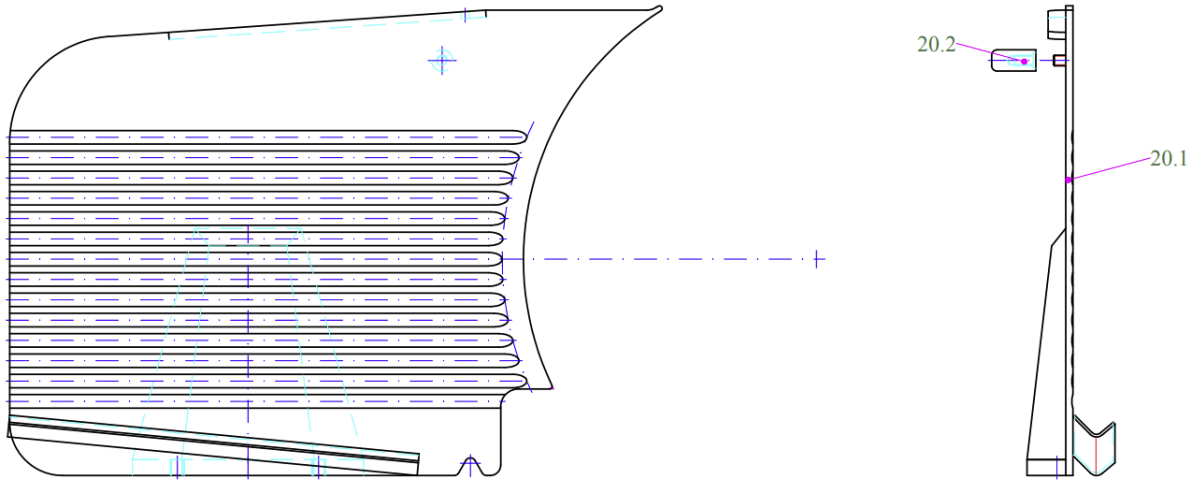
7.1.6	Threaded pin	545510616
7.1.7	Threaded pin	549150620

1.28. Drawing 29: Index Guide Strap Assembly



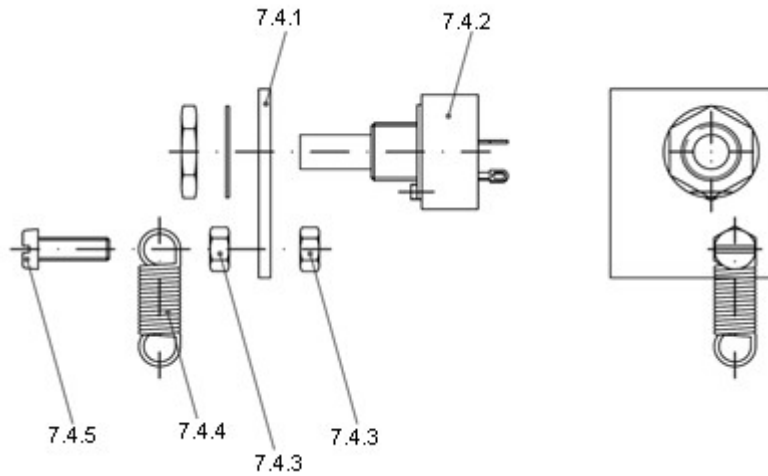
REF. #	DESCRIPTION	PART#
7.2.1	Guide strap	14.155.00
7.2.2	Distance piece for strap	15.104.00
7.2.3	Spring for strap	52.017.00
7.2.4	Spring washer	590127006
7.2.5	Hex screw	609310660
7.2.6	Grooved taper pin	541471528
7.2.7	Washer	590125170

1.29. Drawing 30: Thickness Plate Support Assembly



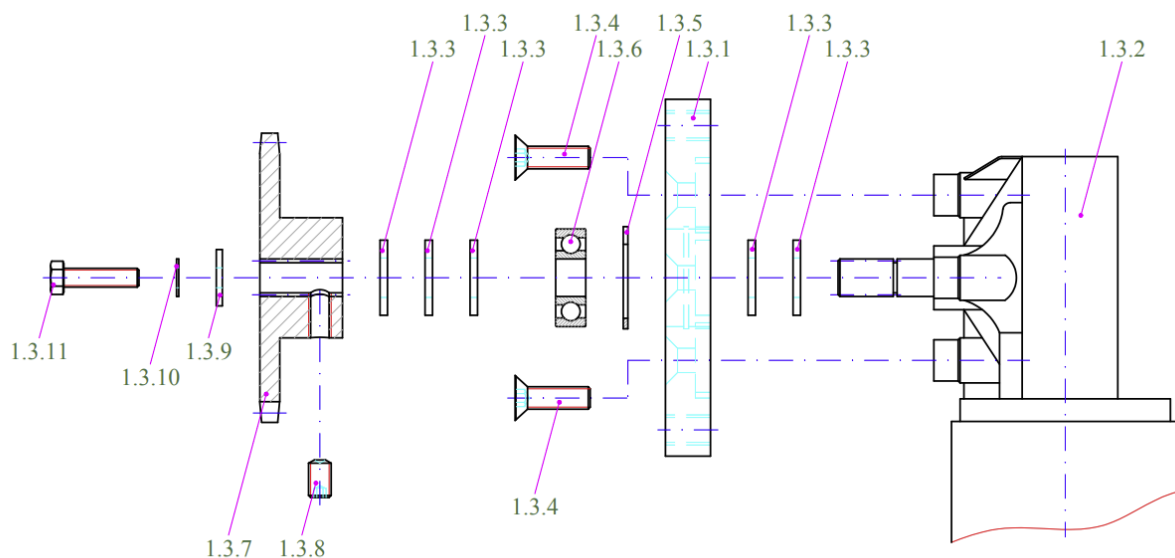
REF. #	DESCRIPTION	PART#
20.1	Thickness plate assembly	20Z300J00
20.2	Pusher bolt	20.302J00

1.30. Drawing 31: Potentiometer Assembly



REF. #	DESCRIPTION	PART#
7.4.1	Metal plate for potentiometer	51.007.19
7.4.2	Potentiometer	51.007.17
7.4.3	Hex nut	609340004
7.4.4	Pull spring	52.106.00
7.4.5	Hex screw	600840413

1.31. Drawing 32: Carriage Chain Tensioner Assembly

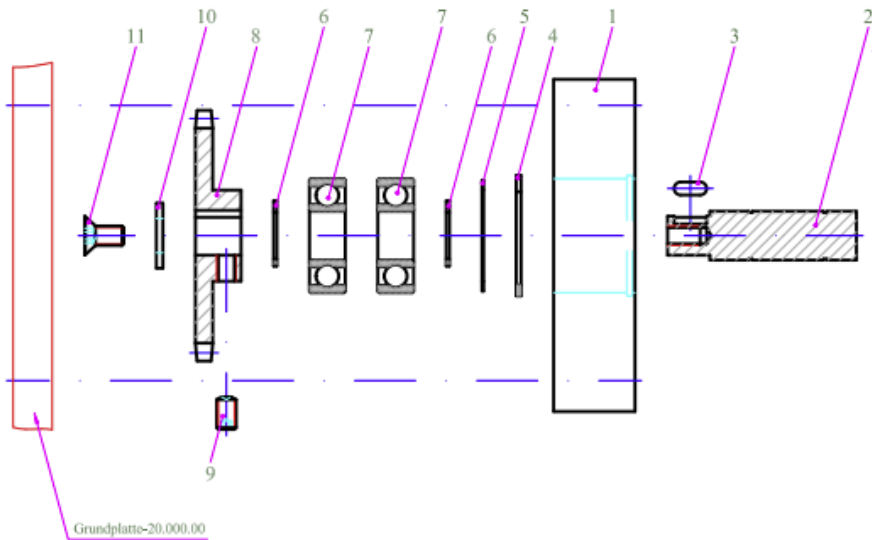


REF. #	DESCRIPTION	PART#
1.3.1	Chain tensioner	20.400.00
1.3.2	Valeo Motor	13.152.50
1.3.4	Countersunk screw	67500M620
1.3.5	Retaining ring	590472026
1.3.11	Hex screw	609330520
1.3.3	Washer	590125105
1.3.7	Chain wheel/ motor	20.401.04
1.3.8	Threaded pin	549160610
1.3.9	Washer	599021053
1.3.10	Toothed washer	556797055

Drawing

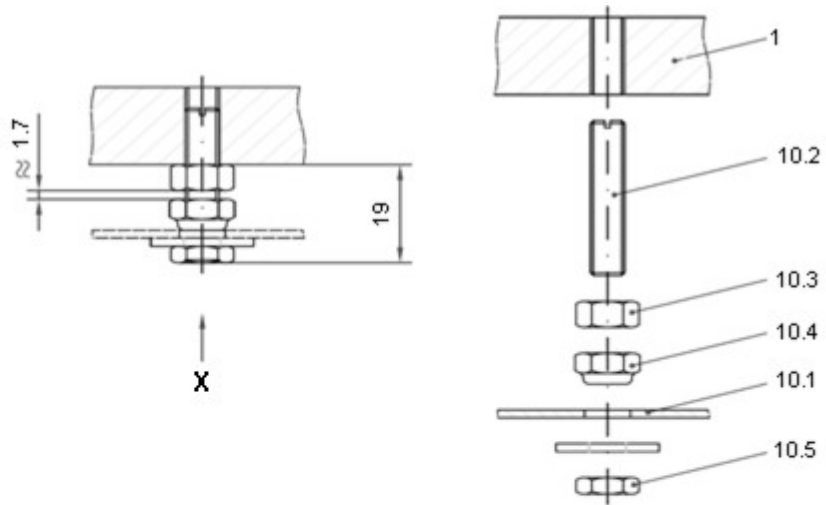
8.12	Cylinder head screw	607991621
8.13	roller chain	15K406.10
6.19	Deep groove ball bearing	50.6000RS

1.32. Drawing 33: Chain Wheel Carrier Assembly



REF. #	DESCRIPTION	PART#
1	Support plate	20.430.01
2	Carrier shaft	20.431.01
3	Parallel key	52.688541
4	Retaining ring	590472035
5	Washer	590283405
6	Retaining ring	590471015
7	Cylindrical ball bearing	50.6202RS
8	Chain wheel	15.405.00
9	Threaded pin	549160610
10	Washer	590125105
11	Countersunk screw	607991612

1.33. 34: Chain Drive Cover Plate

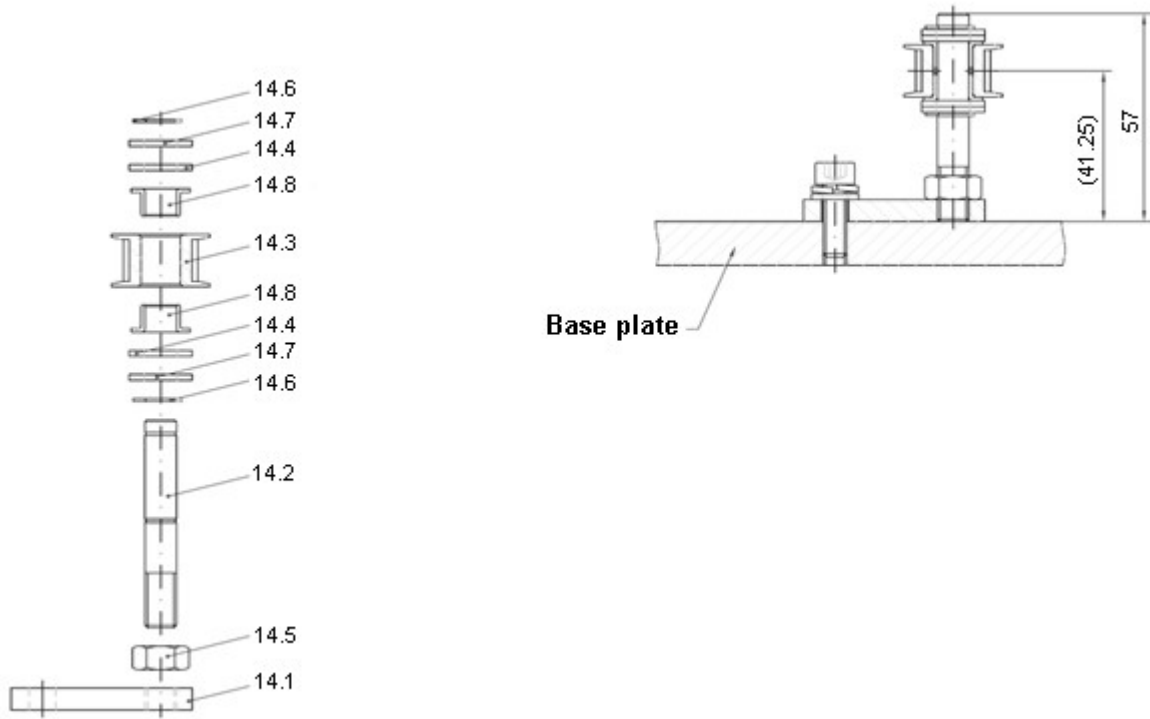


X M1 : 2



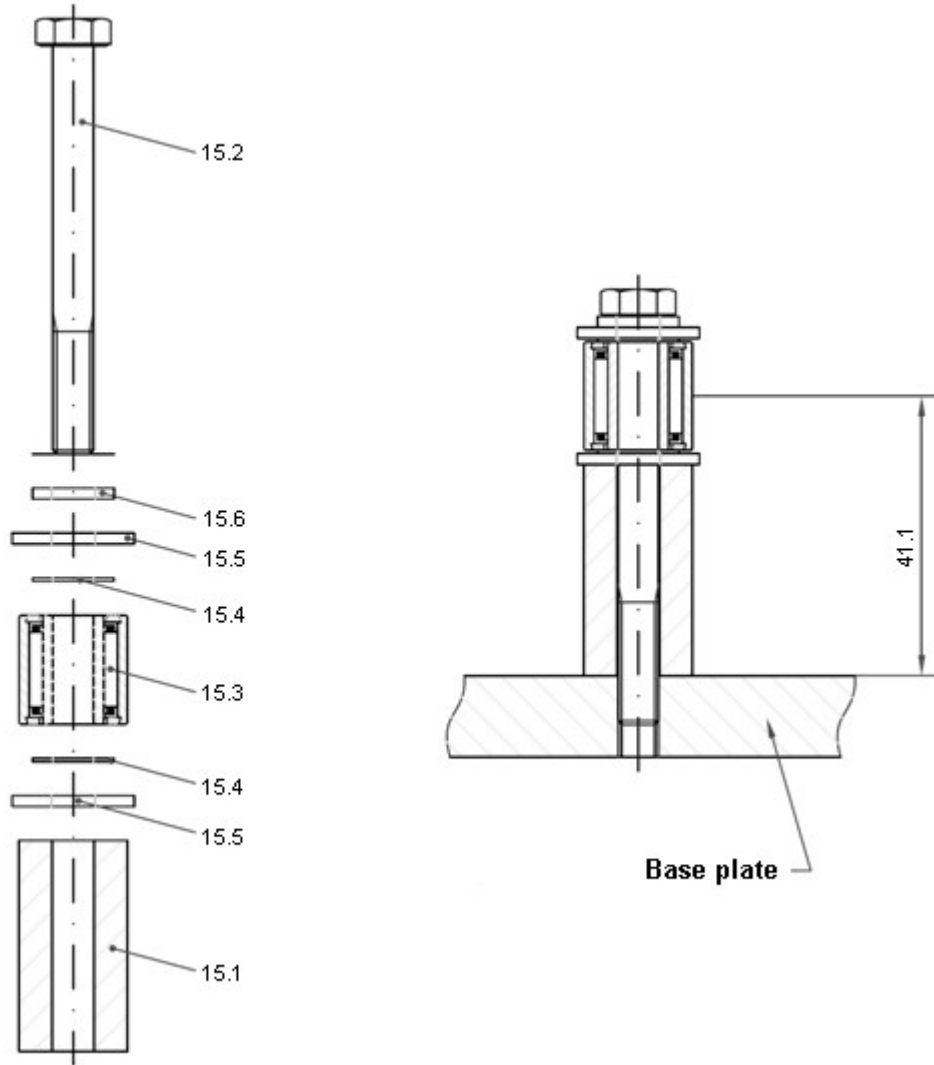
REF. #	DESCRIPTION	PART#
10.1	Chain drive cover plate	20.450.00
10.2	Threaded pin	545510630
10.3	Hex nut	609340006
10.4	Hex nut	609850006
10.5	Hex nut	604390006
1	Base plate	20.000.00

1.34. **Drawing 38: Tensioner Assembly**



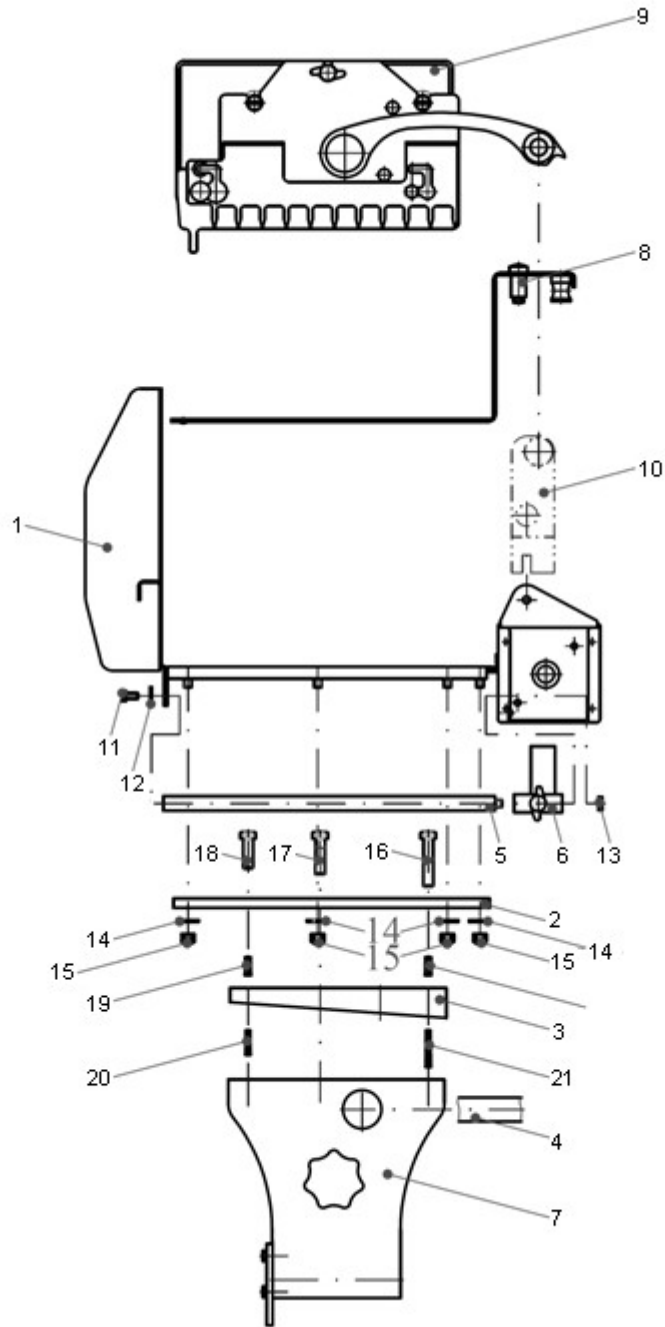
REF. #	DESCRIPTION	PART#
14.1	Tensioner plate	20.011.00
14.2	Tensioner axle	20.012.00
14.3	Synchronizing plate for tensioner	20.013.00
14.4	Washer	590125086
14.5	Hex nut	609340008
14.6	Retaining ring	590471008
14.7	Washer	590125085
14.8	Flange sleeve	61.BB0808

1.35. **Drawing 39: Deflection Roller for Base Plate**



REF. #	DESCRIPTION	PART#
15.1	Support for deflection roller - base plate	20.017.00
15.2	Hex screw	609310660
15.3	Needle bearing	50.NK1616
15.4	Adjusting washer	590988061
15.5	Seal	58.240602
15.6	Washer	590125065

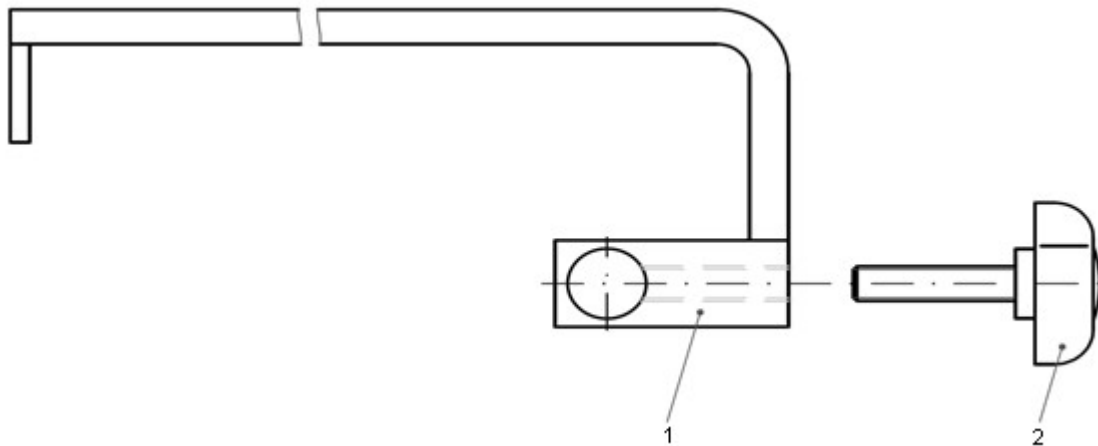
1.36. Drawing 40: Carriage Assembly (medium)



REF. #	DESCRIPTION	PART#
1	Carriage (medium) assembly	20Z650J10
2	Carriage plate (medium)	20.652J10
3	Wedge	20.660.00
4	Cable duct (medium)	20Z661J10
5	Guide rod for adjusting arm	20.654J00

6	Product support arm assembly (medium)	20K655J11
7	Carriage arm	20K470J00
8	Lower food plate assembly	20K670.01
9	End piece holder assembly	20K500J00
10	Driving unit for end piece holder (medium)	20K600J10
11	Hex screw	609330510
12	Washer	599021053
13	Hex nut	604390006
14	Washer	599021065
15	Hex cap nut	609170007
16	Cylinder screw	607984840
17	Cylinder screw	607984830
18	Cylinder screw	607984825
19	Grooved taper pin	541471516
20	Grooved taper pin	541471420
21	Grooved taper pin	541471430

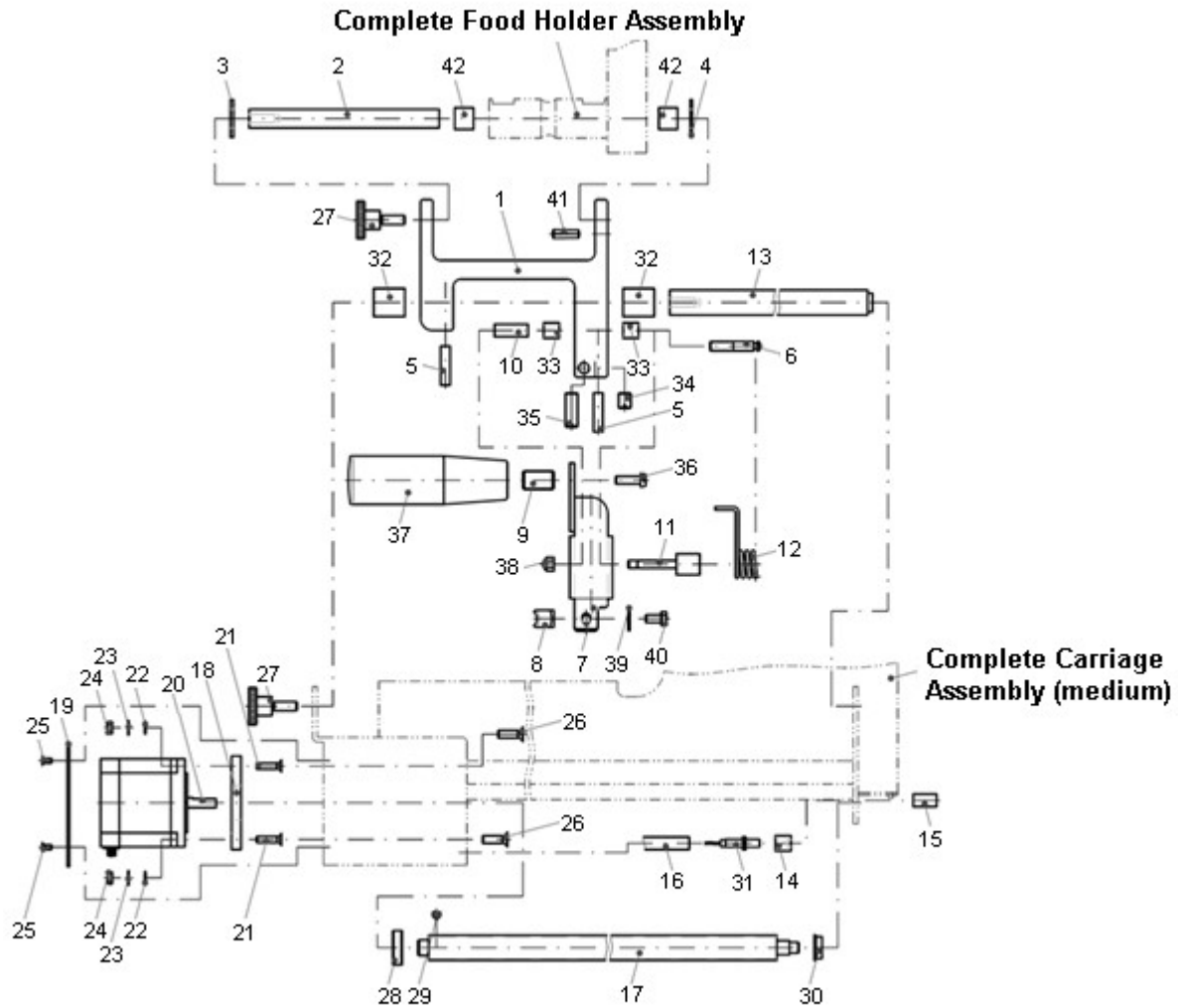
1.37. **Drawing 43: Product Support Arm (medium)**



REF. #	DESCRIPTION	PART#
1	Product support arm assembly	20Z655J11
2	Wing nut	20Z656J50

1.38.

Drawing 45: Driving Unit for End Piece Holder (medium)

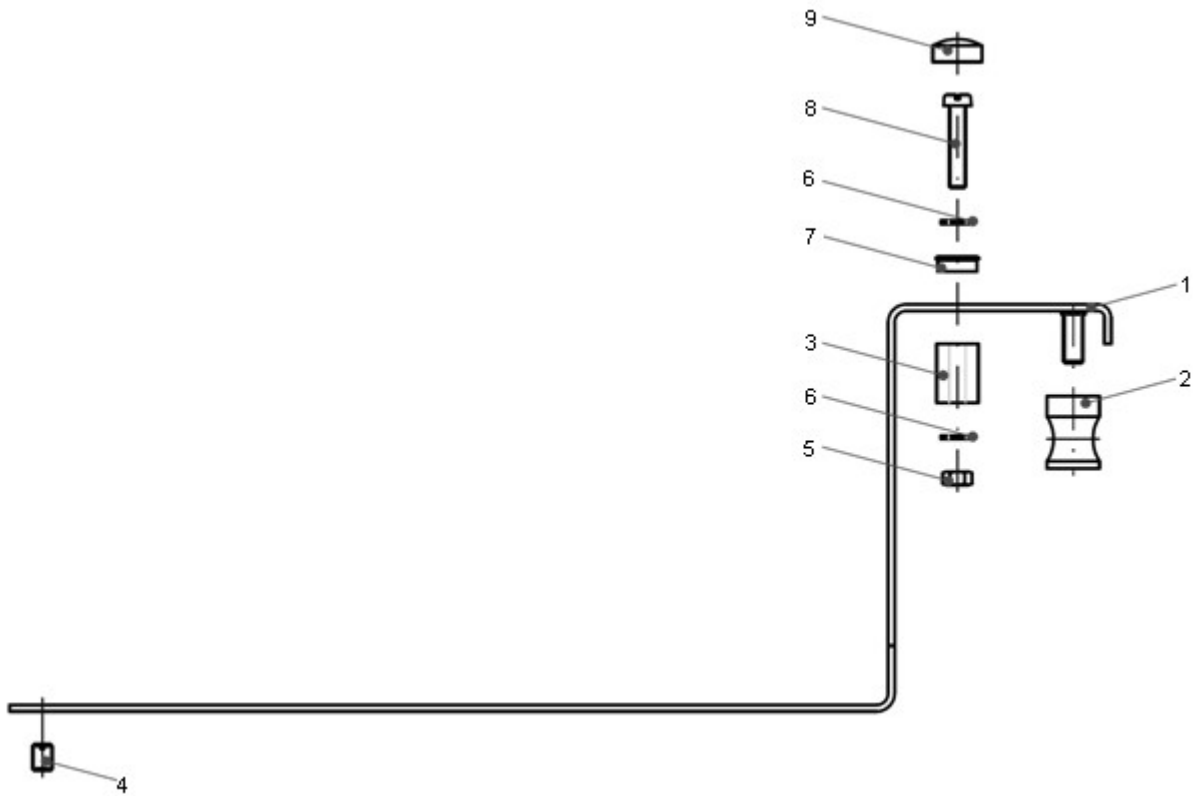


REF. #	DESCRIPTION	PART#
1	End piece holder	20.601J00
2	Guide rod for end piece holder arm	20.604J00
3	Washer for end piece holder arm	20.605.00
4	Washer for end piece holder arm	20.605.10
5	Round magnet	28.117.00
6	Retaining bolt for spring	20.620J10

7	Release	20.614.00
8	Trapezoidal threaded nut	20.618.00
9	Threaded pin	02.516.00
10	Bushing for release	20.619.00
11	Mounting for spring	20.619.00
12	Torsion spring	20.106J00
13	Guide rod for end piece holder (medium)	20.617J10
14	Pipe adapter	20.621J00
15	Nut for pipe adapter	20.621J10
16	Cable duct	20.621J20
17	Trapezoidal spindle	20.613.11
18	Step motor plate	20.609.00
19	Front plate for Motor cover	20.608.00
20	Stepmotor	15.002.75
21	Countersunk screw	609630416
22	Toothed washer	556797043
23	Washer	590125044
24	Hex nut	609340004
25	Hex screw	609630306
26	Hex screw	609630515
27	Knurled knob	604640615
28	Shaft seal	56.102206
29	Threaded pin	545530505
30	Bearing	50.F687RS
31	Reed sensor	05.820.00
32	Bushing	61.001620
33	Bushing	61.000810
34	Threaded pin	545510810
35	Threaded pin	20.620J20
36	Cylinder screw	600840516
37	Handle	57.519311
38	Hex Cap nut	609170025
39	Washer	599021053
40	Hex screw	609330510
41	Grooved taper pin	541471516

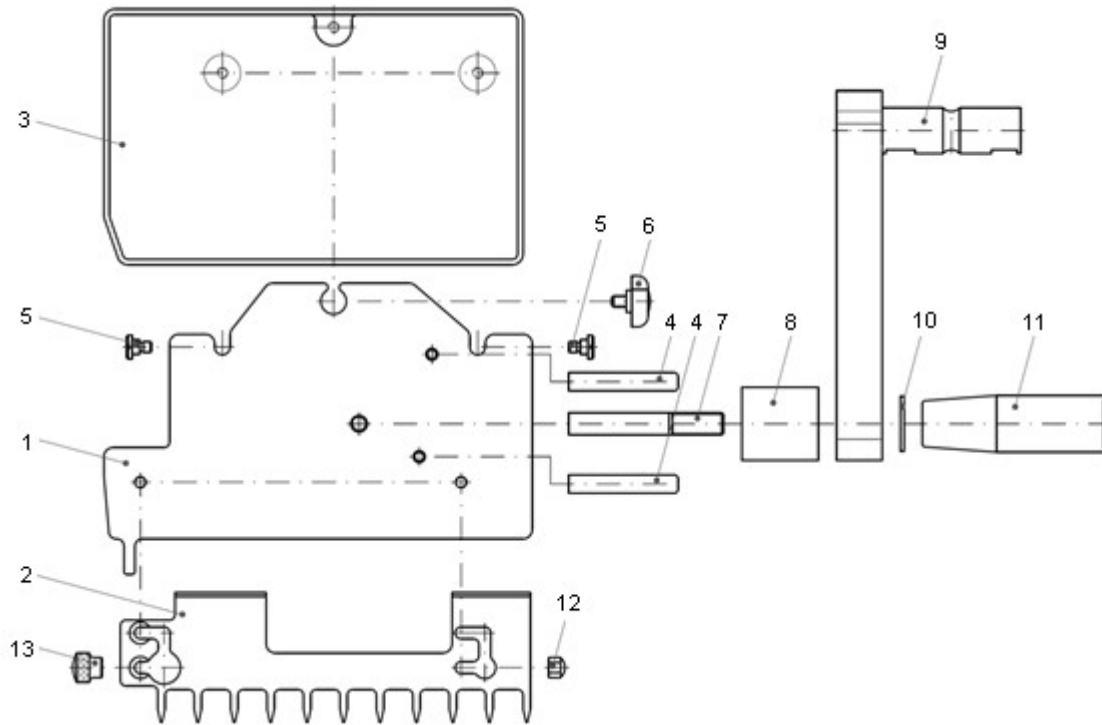
42	Bushing	61.001212
----	---------	-----------

1.39. Drawing 46: Lower Food Plate



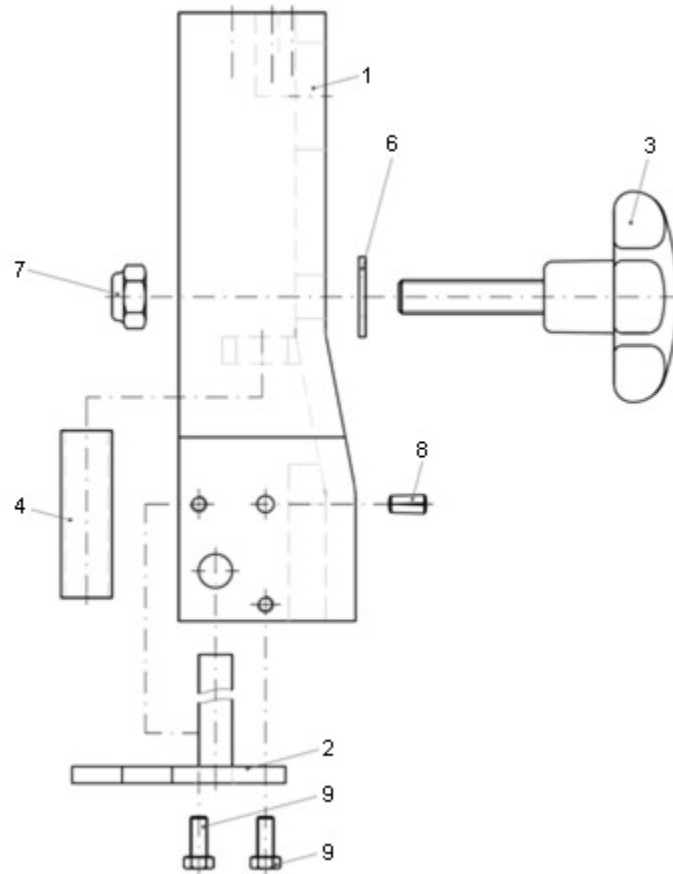
REF. #	DESCRIPTION	PART#
1	Lower food plate assembly	20Z670.01
2	Guide for lower food plate	20.671.01
3	Mounting for lower food plate	20.672.00
4	Threaded pin	545510608
5	Hex nut	609340005
6	Washer	590125051
7	Cap	58.010010
8	Hex screw	600840525
9	Cap	58.010011

1.40. Drawing 47: End Piece Holder Assembly



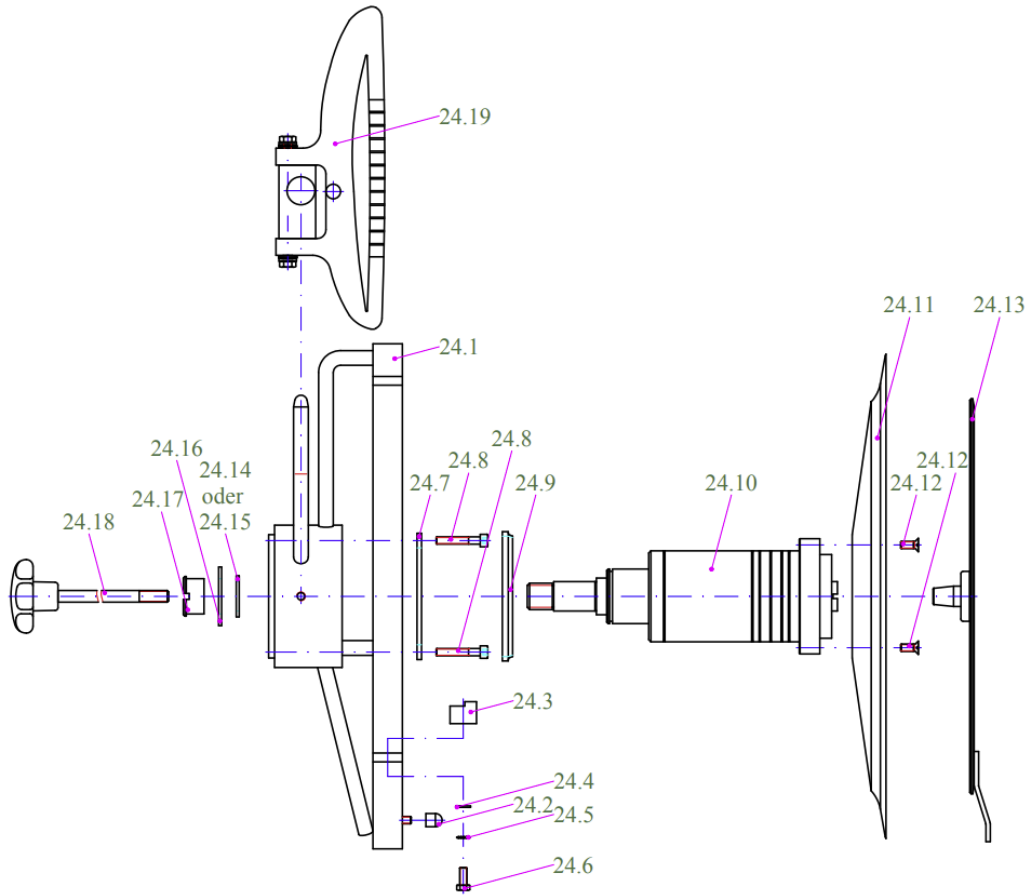
REF. #	DESCRIPTION	PART#
1	End piece holder	20Z502J00
2	Comb for end piece holder	20.503.00
3	End piece holder plate	14K046J10
4	Limiting bolt for end piece holder	20.502J10
5	Flat head screw	20.502J20
6	Wing nut	20Z509J00
7	Bolt for end piece holder	20.504.10
8	Spacer for end piece holder	20.505J00
9	Endpiece holder arm assembly	20Z600J01
10	Washer for handle	58.301202
11	Handle	57.519311
12	Hex cap nut	609170007
13	Knurled knob	65.000011

1.41. Drawing 50: Carriage Support Arm Assembly



REF. #	DESCRIPTION	PART#
1	Carriage arm	20Z470J00
2	Tilt support assembly	20K471.00
3	Star knob assembly	20Z473.00
4	Plastic tube	20.474.00
6	Washer	20.605.00
7	Hex nut	609850010
8	Grooved taper pin	541471510
9	Hex screw	609330512

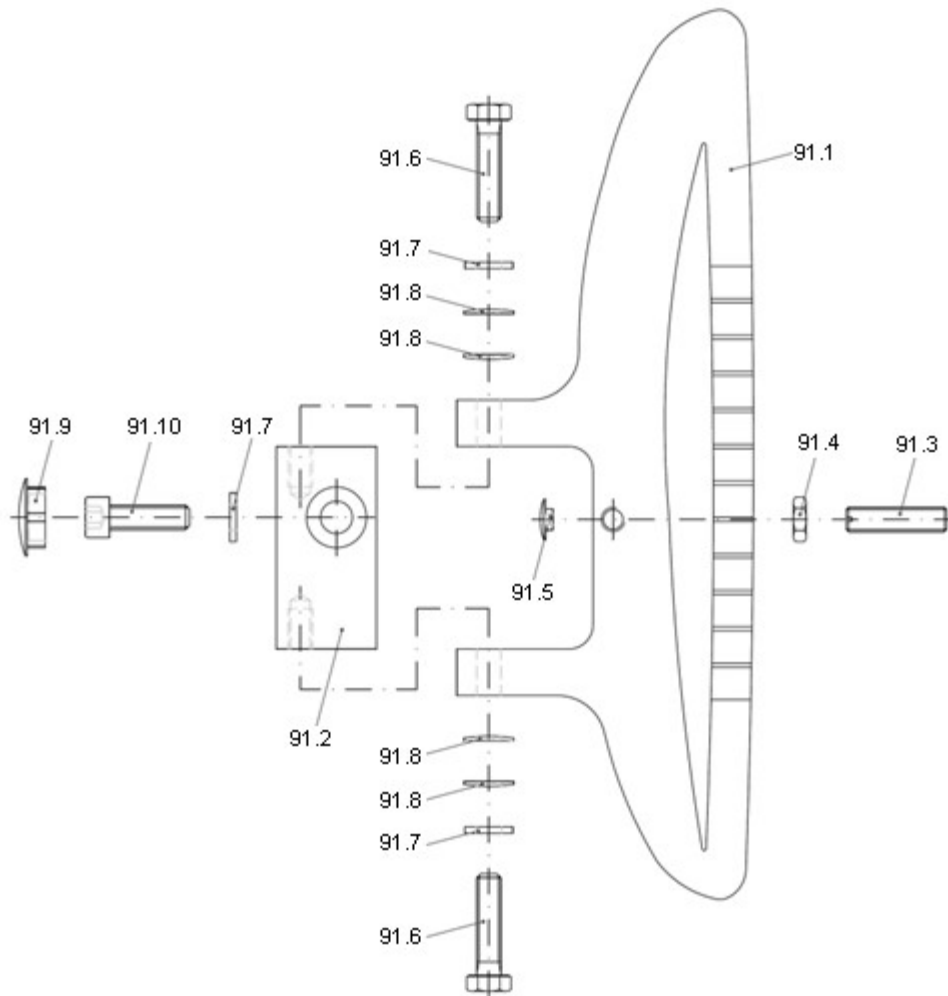
1.42. **Drawing 51: Blade Guard Assembly**



REF. #	DESCRIPTION	PART#
24.1	Fixed protection ring around blade edge	20Z754.00
24.2	Mounting for blade guard	13.008.80
24.3	Nylon block guard	20.751.00
24.4	washer	590125051
24.5	Toothed washer	556797055
24.6	Hex screw	609330512
24.7	Mounting ring for blade guard	14.040.20
24.8	Socket head screw	609120530
24.9	Scraper	56.808847
24.10	Knife hub assembly	13K002.12
24.11	330 mm blade	13.007.55
24.12	Hex screw	609630512
24.13	Blade guard assembly	04K780.00

24.14	Shim for knife hub nut	15.200.00
24.15	Shim for knife hub nut	15.201.00
24.16	Ring	58.402402
24.17	Nut for knife axis	14.002.31
24.18	Fixing shaft for blade guard	14K109.00
24.19	Deflector assembly	20K250.00
105	Hex screw	609330835
106	Threaded pin	545510825
107	Compensation disc for knife hub nut	15.200.00
108	Compensation disc for knife hub nut	15.201.00
109	Nut for knife axle	14.002.31
110	Ring	58.402402
111	Cylindrical screw	609120530
112	Deflector	56.808847
113	Countersunk screw	609630512
114	Washer	590125051
115	Toothed washer	556797055
116	Hex screw	609330512
2	Body assembly	20Z001J01

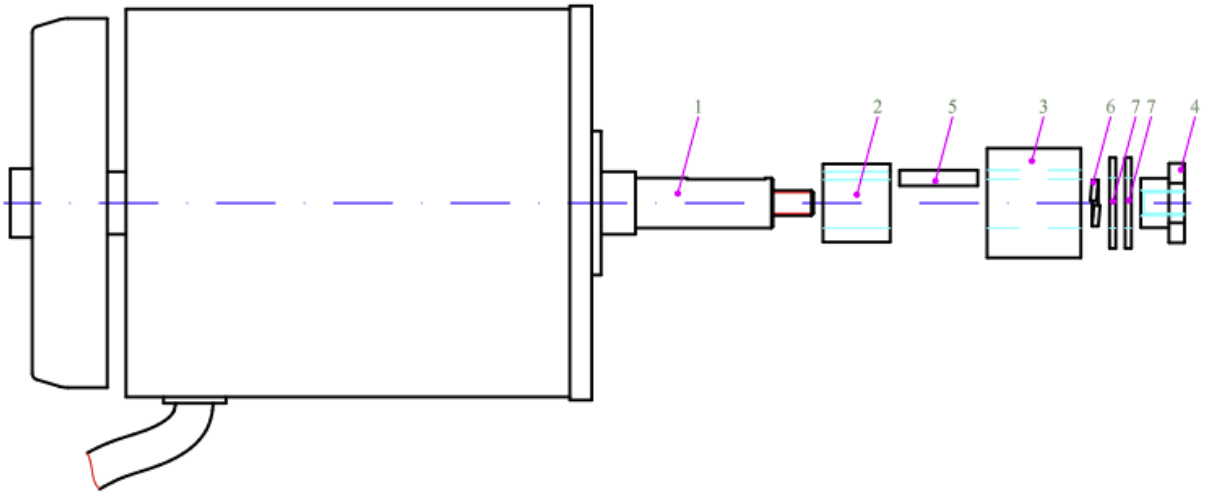
1.43. **Drawing 52: Deflector Assembly**



REF. #	DESCRIPTION	PART#
91.1	Deflector	20F250.00
91.2	Deflector support	20.251.00
91.3	Threaded pin	09.017.00
91.4	Hex nut	604390006
91.5	Cap	58.0M6SW5
91.6	Hex screw	609330625
91.7	Washer	590125065
91.8	Disc spring	52.024.00
91.9	Cap	58.100100

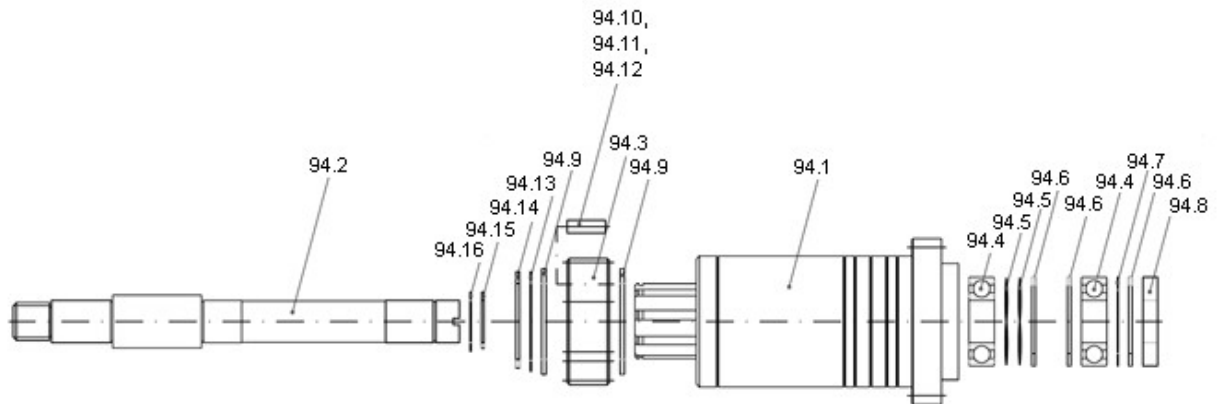
91.10	Cylindrical screw	609120620
-------	-------------------	-----------

1.44. Drawing 53: Motor Assembly



REF. #	DESCRIPTION	PART#
1	Motor 110 Volt	13.151.10
2	Seperator for motor	20.756.00
3	Worm	13.020.01
4	Nut for motor	13.020.20
5	Feather key	52.688552
6	Spring washer	590127008
7	Ring	58.291602

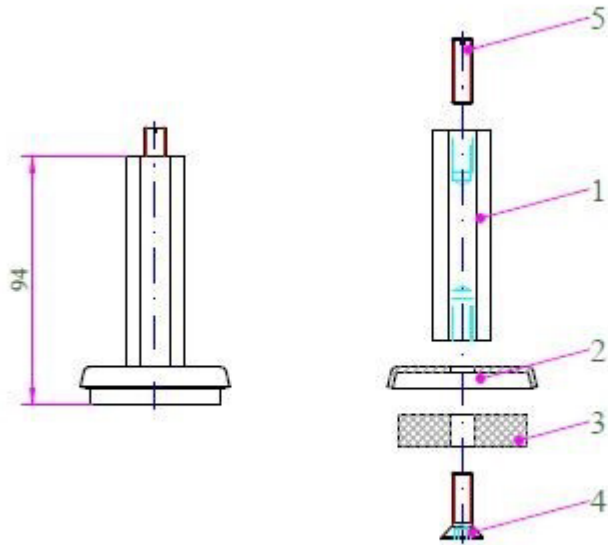
1.45. **Drawing 54: Blade Hub Assembly**



REF. #	DESCRIPTION	PART#
94.1	Knife hub	13.002.12
94.2	Blade axle	13.002.21
94.3	Helical gear for knife hub	13.002.60
94.4	Deep groove ball bearing	50.6004RS
94.5	Leveling washer for ball bearing	590344135
94.6	Retaining ring	590472042
94.7	Adjusting washer	590988305
94.8	Rotary shaft seal	56.204206
94.9	Rubber seal	58.503620
94.11	Yellow buffer	13.002.70
94.12	Black buffer	13.002.71
94.13	Adjusting washer	590988374
94.14	Retaining ring	590471036
94.15	Retaining ring	590471020
94.16	Adjusting washer	590988202

1.46.

DRAWING 55: FOOT ASSEMBLY



REF#	DESCRIPTION	PART#
1	Foot	12.003.00
2	Foot holder	15.060.60
3	Rubber disc	58.050031
4	Countersunk screw	607991825
5	Threaded pin	545510825