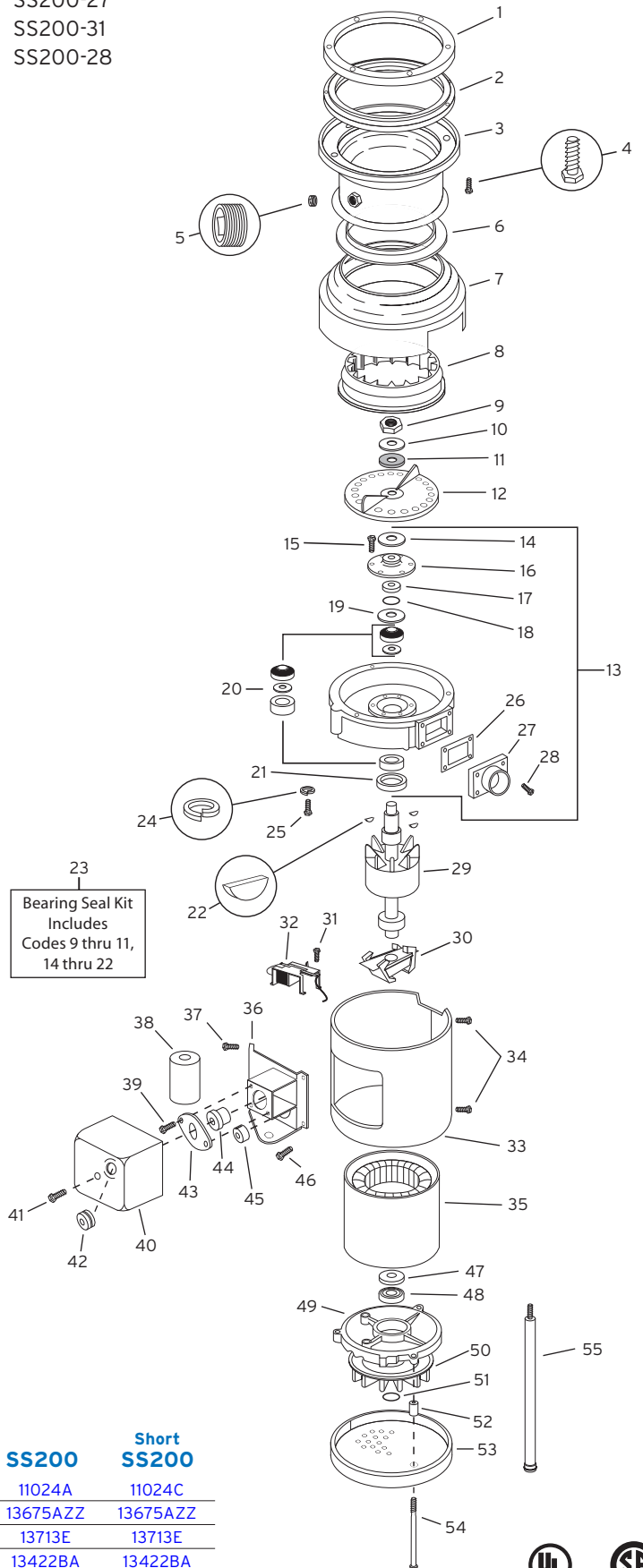


Standard UL SS150-34 SS200-27  
 Short Body UL SS150-38 SS200-31  
 CSA Approved SS150-35 SS200-28

CODE #	DESCRIPTION	QTY	PART NUMBER
1	Mounting Flange	1	11004
2	Mounting Gasket	1	11016
3	Upper Body Assy	1	See Chart "A"
4	Screw (1/4-20 x 3/4)	6	1491
5	Pipe Plug	1	11227
6	Shredder Gasket	1	11007
7	Body & Cover Assy	1	12443ZZ
8	Stationary Shredder	1	14663
9	Nut	1	11260
10	Washer	1	12445
11	Fiber Washer	1	12142
12	Rotating Shredder Assy	1	12946ZZ
13	Upper End Bell Assy (14-22)	1	13723
14	Shield	1	12936
15	Screw (8-18 x 1/2)	6	1269
16	Seal Assy	1	12934A
17	Spacer Sleeve	1	12935
18	O-Ring	1	12860
19	Slinger	1	12319
20	Upper Bearing Assy	1	12610
21	Water & Oil Seal	1	12326
22	Woodruff Key	3	11322
23	Bearing Seal Kit (9-11 & 14-22)	1	13080
24	Lock Washer	6	11444
25	Screw (1/4-20 x 1)	6	11524
26	Tailpipe Gasket	1	11459
27	Tailpipe Flange	1	13997
28	Screw (1/4-20 x 3/4)	4	14729
29	Rotor & Shaft Assy	1	See Chart "A"
30	Centrifugal Actuator	1	13708
31	Screw (8-32 x 1/2)	2	8221
32	Start Switch	1	13707
33	Trim Band	1	12426ZZ
34	Screw (8-32 x 1/2)	2	1836A
35	Stator Assy	1	See Chart "A"
36	Mounting Bracket Assy	1	12433KZZ
37	Screw (8-18 x 1/4)	4	11448
38	Capacitor	1	11868
39	Screw (8-32 x 1/2)	2	8221
40	Terminal Box Assy	1	13396ZZ
41	Screw (8-32 x 1 1/4)	1	12381
42	Grommet	1	12383
43	Overload Clamp	1	12378
44	Overload Protector	1	See Chart "A"
45	Bushing	1	12384
46	Screw	1	2466A
47	Lower Bearing	1	13709
48	Pre-Load Spring	1	13678
49	Lower End Frame	1	See Chart "A"
50	Fan	1	13676ZZ
51	Retaining Ring	1	13677ZZ
52	Spacer Tube	3	12490
53	Bottom Cover	1	12432
54	Thru Bolt	3	12382A
55	Foot Tube Assy (Optional)	2	11757B



(A)

CODE #	DESCRIPTION	QTY	SS150	Short SS150	SS200	Short SS200
3	Upper Body Assy	1	11024A	11024C	11024A	11024C
29	Rotor & Shaft Assy	1	13675ZZ	13675ZZ	13675AZZ	13675AZZ
35	Stator Assy	1	13713D	13713D	13713E	13713E
44	Overload Protector	1	13422S	13422S	13422BA	13422BA
49	Lower End Frame	1	13710	13710	14709	14709

