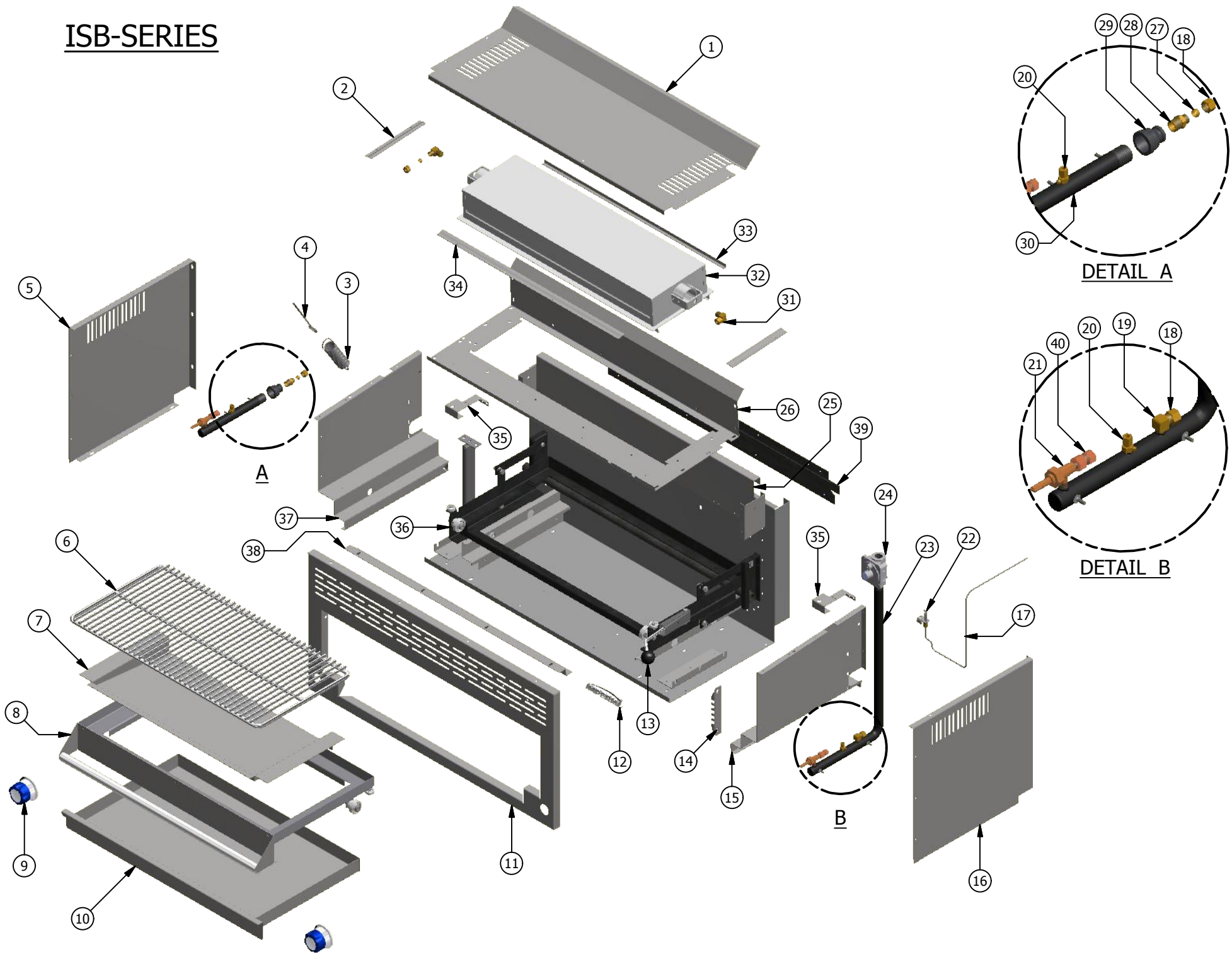


# ISB-SERIES



## ISB Series - Salamander Broiler

ITEM	DESCRIPTION	PART NO.	24"	36"
1	24" ISB TOP COVER/PANEL	14000	1	-
***	36" ISB TOP COVER/PANEL	14001	-	1
2	INFRA-RED BURNER HOLDER (L/H)	14020	2	2
3	ISB SPRING	30821	2	2
4	ISB BOLT	30328	2	2
5	SIDE PANEL (L/H)	14010	1	1
6	24" CHROME RACK	2032	1	-
***	36" CHROME RACK	2033	-	1
7	24" DRIP PAN	17014	1	-
***	36" DRIP PAN	17015	-	1
8	24" RACK ASS'Y W/ PULL OUT HANDLE	17030	1	-
***	36" RACK ASS'Y W/ PULL OUT HANDLE	17031	-	1
9	RESTAURANT SERIES, OPEN BURNER	36330	1	2
10	24" CRUMB TRAY ASSEMBLY	17012	1	-
***	36" CRUMB TRAY ASSEMBLY	17013	-	1
11	24" FRONT PANEL	17011	1	-
***	36" FRONT PANEL	17010	-	1
12	SMALL IMPERIAL LOGO	37766	1	1
***	PUSH NUT	36569	2	2
13	HANDLE KNOB	1014	1	1
14	LATCH BRACKET	17035	1	1
15	SIDE LINER (R/H)	17026	1	1
16	SIDE PANEL (R/H)	14011	1	1
17	3/16" FLEX TUBING	37001-24	1	1-2
18	3/8 COMPRESSION NUT	30266	-	2
19	90 DEGREE ELBOW	30287	-	1
20	STRAIGHT VALVE / IRB SINGLE PILOT	1607	1	1-2
***	3/16" SHORT COMPRESSION NUT	30277	1	1-2
***	3/16" COMPRESSION SLEEVE	30280	1	1-2
21	GAS VALVE BURNER	1610	1	1-2
22	ISB PILOT	1291	1	1-2
***	PILOT BELL ORIFICE #18 (NAT)	1017	1	1-2
***	PILOT BELL ORIFICE #10 (LPG)	1018	1	1-2
23	ISB MANIFOLD R/H	0999-1	-	1
24	GAS PRESSURE REGULATOR (NAT)	38733	1	1
***	GAS PRESSURE REGULATOR (LP)	38734	1	1
25	24" BACK FLUE SUPPORT	14050	1	-
***	36" BACK FLUE SUPPORT	31441	-	1
26	24" TOP LINER	14045	1	-
***	36" TOP LINER	14046	-	1
27	3/8 COMPRESSION SLEEVE BRASS	30272	-	4
28	BRASS STRAIGHT FITTING	2995	-	1
29	BELL REDUCER	30206	-	1
30	ISB MANIFOLD L/H	14042	-	1
31	ORIFICE #45 (NAT)	35126	1	1-2
***	ORIFICE #55 (LP)	1642	1	1-2
32	24" INFRA-RED BURNER	1039	1	-

## ISB Series - Salamander Broiler

ITEM	DESCRIPTION	PART NO.	24"	36"
***	36" INFRA-RED BURNER DUAL INLET	1299	-	1
***	INFRA-RED BURNER	1040	-	1
33	24" BURNER HOLDER (BACK)	31425	1	-
***	36" BURNER HOLDER (BACK)	31426	-	1
34	24" BURNER HOLDER (FRONT)	31423	1	-
***	36" BURNER HOLDER (FRONT)	31424	-	1
35	PILOT BRACKET (L/R)	14030	1	1-2
36	24" CRADDLE FRAME ASSEMBLY	17070	1	-
***	36" CRADDLE FRAME ASSEMBLY	17071	-	1
37	SIDE LINER (L/H)	17027	1	1
38	24" HEAT RAIL	14015	1	-
***	36" HEAT RAIL	14016	-	1
39	24" WALL MOUNT KIT	14055	1	-
***	36" WALL MOUNT KIT	14056	-	1
+++	REINFORCEMENT CHANNEL SET	14060	1	1
40	3/8-27 X 3/8 CC VALVE ADAPTER BRASS.	30286	1	1-2
+++	3/8 X 18" LG CORRIGATED S/S FLEX TUBING	34679-18	1	1-2
+++	3/8 X 43" LG CORRIGATED S/S FLEX TUBING	34679-43	-	1