

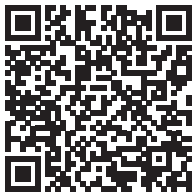
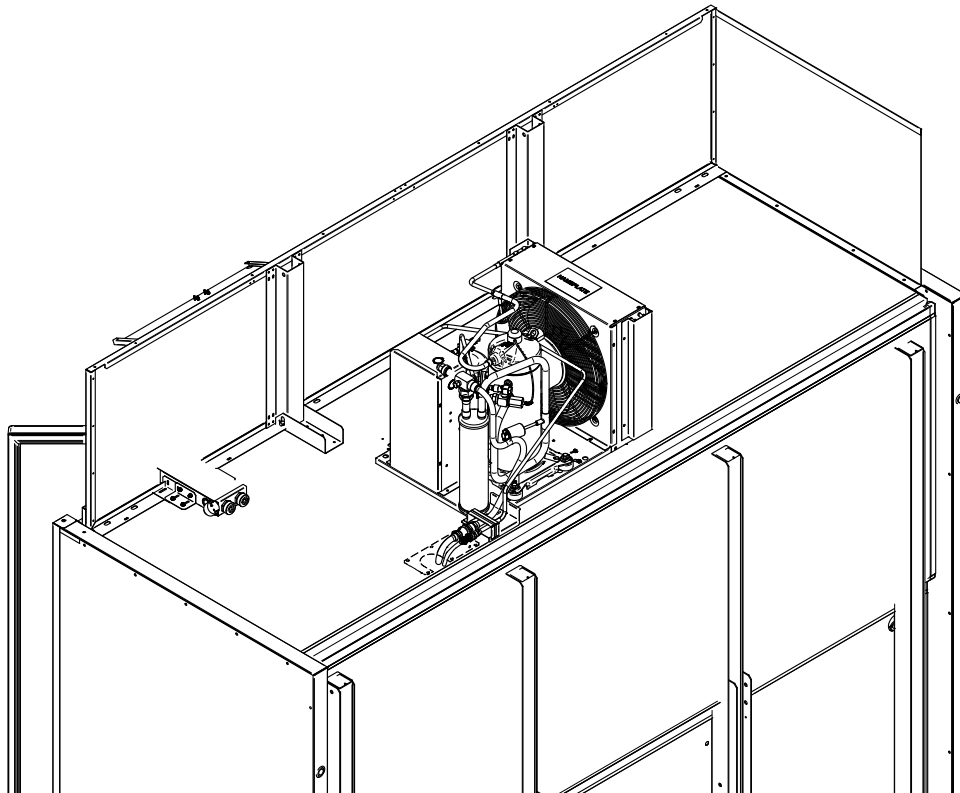
HUSSMANN®

Reach-In Freedom Air-Cooled Condensing Units

Technical Data Sheet

P/N 3049063_L

March 2024



Scan the QR code with your mobile device to access additional product information or order parts.

Parts may also be ordered at:

parts.hussmann.com

Call toll free: 1.855.487.7778

We reserve the right to change or revise specifications and product design in connection with any feature of our products. Such changes do not entitle the buyer to corresponding changes, improvements, additions or replacements for equipment previously sold or shipped.

Datasheet-Freedom Line Condensing Units

R448A

Note: Revision L: Updated condensing unit IDs

| |
|--|
| Freedom Line Air-Cooled Condensing Units for Reach-in Cases |
|--|

| Application | RFL/RFLN/RFLNS | | | | | | |
|---|--------------------------------------|--------------------------------------|--------------------------------------|--------------------------------------|--------------------------------------|--------------------------------------|------|
| | 1 Door | 1 Door | 2 Door | 3 Door | 4 Door | 5 Door | |
| SINGLE POINT CIRCUIT | 120V, 1 Phase, 2 Wire | 208V, 1 Phase, 4 Wire | 208V, 1 Phase, 4 Wire | 208V, 1 Phase, 4 Wire | 208V, 1 Phase, 4 Wire | 208V, 1 Phase, 4 Wire | |
| Maximum Overcurrent Protection Device (MOPD) | | | | | | | |
| | RFL, RFLN | 20 | 20 | 20 | 25 | 40 | 40 |
| | RFLNS | -- | -- | 20 | 20 | 35 | 40 |
| Minimum Circuit Ampacity (MCA) | | | | | | | |
| | RFL, RFLN | 16.3 | 13.3 | 17.3 | 22.5 | 29.0 | 33.8 |
| | RFLNS | -- | -- | 15.5 | 20.5 | 26.4 | 32.2 |
| Condensing Unit | | | | | | | |
| Voltage/ 60Hz / 1 Phase | 120V | 208/230 | 208/230 | 208/230 | 208/230 | 208/230 | |
| Compressor RLA | 6.3 | 4.3 | 6.1 | 7.4 | 13.9 | 13.9 | |
| LRA | 40 | 23 | 42.3 | 40.3 | 75 | 75 | |
| R448A Charge (lbs)(Condensing unit only) | 0.33 | 1.4 | 5.1 | 5.1 | 5.1 | 5.1 | |
| Total Working Charge (case + condensing unit, lbs): | 0.67 | 2.3 | 6.0 | 6.5 | 6.9 | 7.4 | |
| Oil Recharge (oz) | 12 | 19 | 19 | 19 | 19 | 19 | |
| Heat of Rejection (Btu/hr) | 1,942 | 2,451 | 4,804 | 6,509 | 8,438 | 10,548 | |
| Refrigerant Connections (inches) | | | | | | | |
| Liquid Line | 3/8 | 3/8 | 3/8 | 3/8 | 3/8 | 3/8 | |
| Suction Line | 3/8 | 5/8 | 5/8 | 5/8 | 5/8 | 5/8 | |
| Dimensions (inches) | | | | | | | |
| Height | 11.5 | 11.9 | 17.7 | 17.7 | 17.7 | 17.7 | |
| Length | 22.5 | 16.0 | 24.9 | 24.9 | 24.9 | 24.9 | |
| Width | 18 | 15.1 | 18.8 | 18.8 | 18.8 | 18.8 | |
| Shipping Weight (lbs) | 40 | 53 | 119 | 122 | 117 | 117 | |

NOTE: Includes fans, lights, controller, evaporator pan, a/s heaters, pump, condensing unit, and defrost heaters. Subtract 5 amps if heated condensate pan is not applied.

MCA and MOPD values may need to be adjusted for additional optional components.

1 door cases are available for either 120V and 208V single phase power supply. See page 14.

| |
|--|
| Freedom Line Air-Cooled Condensing Units for Reach-in Cases |
|--|

| Application | RFM/RFMN/RFMNS | | | | |
|---|----------------|--------|--------|-----------------------|---------|
| | 1 Door | 2 Door | 3 Door | 4 Door | 5 Door |
| | 120V | | | 208V, 1 Phase, 4 Wire | |
| SINGLE POINT CIRCUIT | | | | | |
| Maximum Overcurrent Protection Device (MOPD) | 10 | 20 | 20 | 20 | 20 |
| Minimum Circuit Ampacity (MCA) | | | | | |
| RFM, RFMN | 12.8 | 14.1 | 15.8 | 14.4 | 16.5 |
| RFMNS | -- | 7.4 | 8.9 | 13.5 | 15.3 |
| Condensing Unit | | | | | |
| Voltage/ 60Hz / 1 Phase | 120 | 120 | 120 | 208/230 | 208/230 |
| Compressor RLA | 4.0 | 4.0 | 4.8 | 3.0 | 4.0 |
| LRA | 26.0 | 26.0 | 34.0 | 17.5 | 22.0 |
| R448A Charge (lbs)(Condensing unit only) | 0.33 | 0.7 | 0.7 | 0.7 | 0.7 |
| Total Working Charge (case + condensing unit, lbs): | 0.74 | 2.5 | 3.0 | 3.3 | 3.5 |
| Oil Recharge (oz) | 12 | 10 | 10 | 10 | 10 |
| Heat of Rejection (Btu/hr) | 835 | 1,656 | 2,548 | 3,331 | 4,164 |
| Refrigerant Connections (inches) | | | | | |
| Liquid Line | 3/8 | 3/8 | 3/8 | 3/8 | 3/8 |
| Suction Line | 3/8 | 5/8 | 5/8 | 5/8 | 5/8 |
| Dimensions (inches) | | | | | |
| Height | 11.5 | 10.5 | 10.5 | 11.7 | 11.7 |
| Length | 21.5 | 16.0 | 16.0 | 16.5 | 16.6 |
| Width | 18 | 14.3 | 14.3 | 13.1 | 13.1 |
| Shipping Weight (lbs) | 40 | 40 | 44 | 45 | 40 |

NOTE: Includes fans, lights, controller, evaporator pan, a/s heaters, pump, condensing unit, and defrost heaters. Subtract 5 amps if heated condensate pan is not applied.

MCA and MOPD values may need to be adjusted for additional optional components.

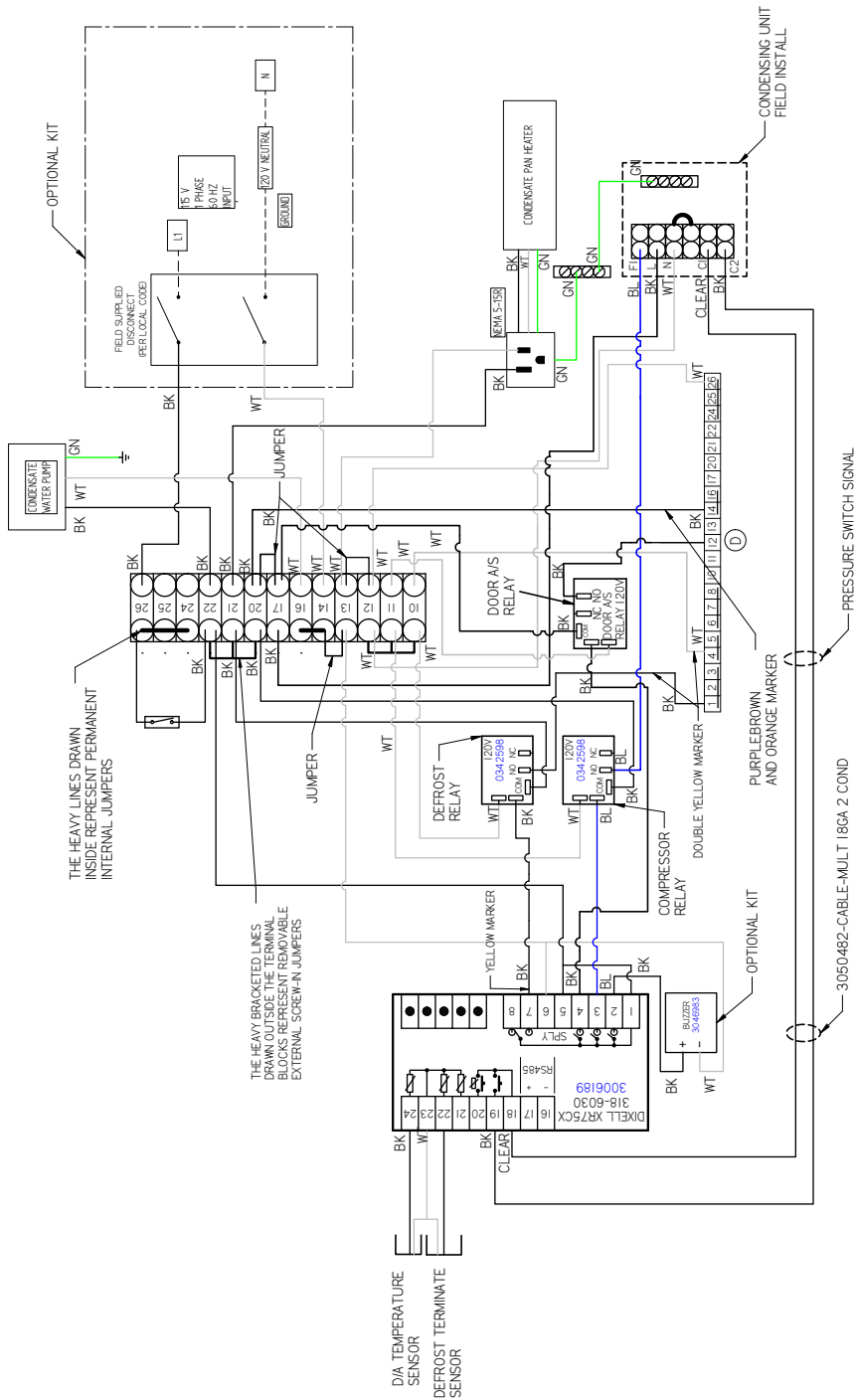
| |
|--|
| Freedom Line Air-Cooled Condensing Units for Reach-in Cases |
|--|

| Application | RFLTM | | | |
|--|-----------------------|---------|---------|---------|
| | 2 Door | 3 Door | 4 Door | 5 Door |
| MULTI-POINT WIRING (Standard for RFL,RFLN,RFLTM) | | | | |
| Circuit 1 (120V, 1 Phase) Fans, Lights, Controller, Evaporator Pan, A/S Heaters Pump | | | | |
| Maximum Overcurrent Protection Device (MOPD) | *See Case Data Sheet* | | | |
| Minimum Circuit Ampacity (MCA): | *See Case Data Sheet* | | | |
| Circuit 2 (208V, 1 Phase) Condensing Unit and Defrost Heaters | | | | |
| Maximum Overcurrent Protection Device (MOPD) | 15 | 15 | 30 | 30 |
| Minimum Circuit Ampacity (MCA) | 9.5 | 12.3 | 18.8 | 18.8 |
| OPTIONAL SINGLE POINT CIRCUIT (208V, 1 Phase, 4 Wire) | | | | |
| Maximum Overcurrent Protection Device (MOPD) | -- | -- | -- | -- |
| Minimum Circuit Ampacity (MCA) | -- | -- | -- | -- |
| Condensing Unit | | | | |
| Voltage/ 60Hz / 1 Phase | 208/230 | 208/230 | 208/230 | 208/230 |
| Compressor RLA | 6.1 | 8.7 | 13.9 | 13.9 |
| LRA | 42.3 | 55.0 | 75 | 75 |
| R448A Charge (lbs)(Condensing unit only) | 5.1 | 5.1 | 5.1 | 5.1 |
| Total Working Charge (case + condensing unit, lbs): | 6.0 | 6.5 | 6.9 | 7.4 |
| Oil Recharge (oz) | 19 | 19 | 19 | 19 |
| Heat of Rejection (Btu/hr) | 1,987 | 3,057 | 3,997 | 4,997 |
| Refrigerant Connections (inches) | | | | |
| Liquid Line | 3/8 | 3/8 | 3/8 | 3/8 |
| Suction Line | 5/8 | 5/8 | 5/8 | 5/8 |
| Dimensions (inches) | | | | |
| Height | 17.7 | 17.7 | 17.7 | 17.7 |
| Length | 24.9 | 24.9 | 24.9 | 24.9 |
| Width | 18.8 | 18.8 | 18.8 | 18.8 |
| Shipping Weight (lbs) | 119 | 118 | 117 | 117 |

RFL, RFLN 120 V 1 Door

3142978 D

Freedom Line Air-Cooled Condensing Units for Reach-in Cases



UL COLOR CODES / ABBREVIATIONS

| | |
|-------------|-------------|
| RED = RD | WHITE = WT |
| BLACK = BK | GREEN = GN |
| BLUE = BL | BROWN = BN |
| YELLOW = YL | ORANGE = OR |
| GRAY = GY | VIOLET = VT |

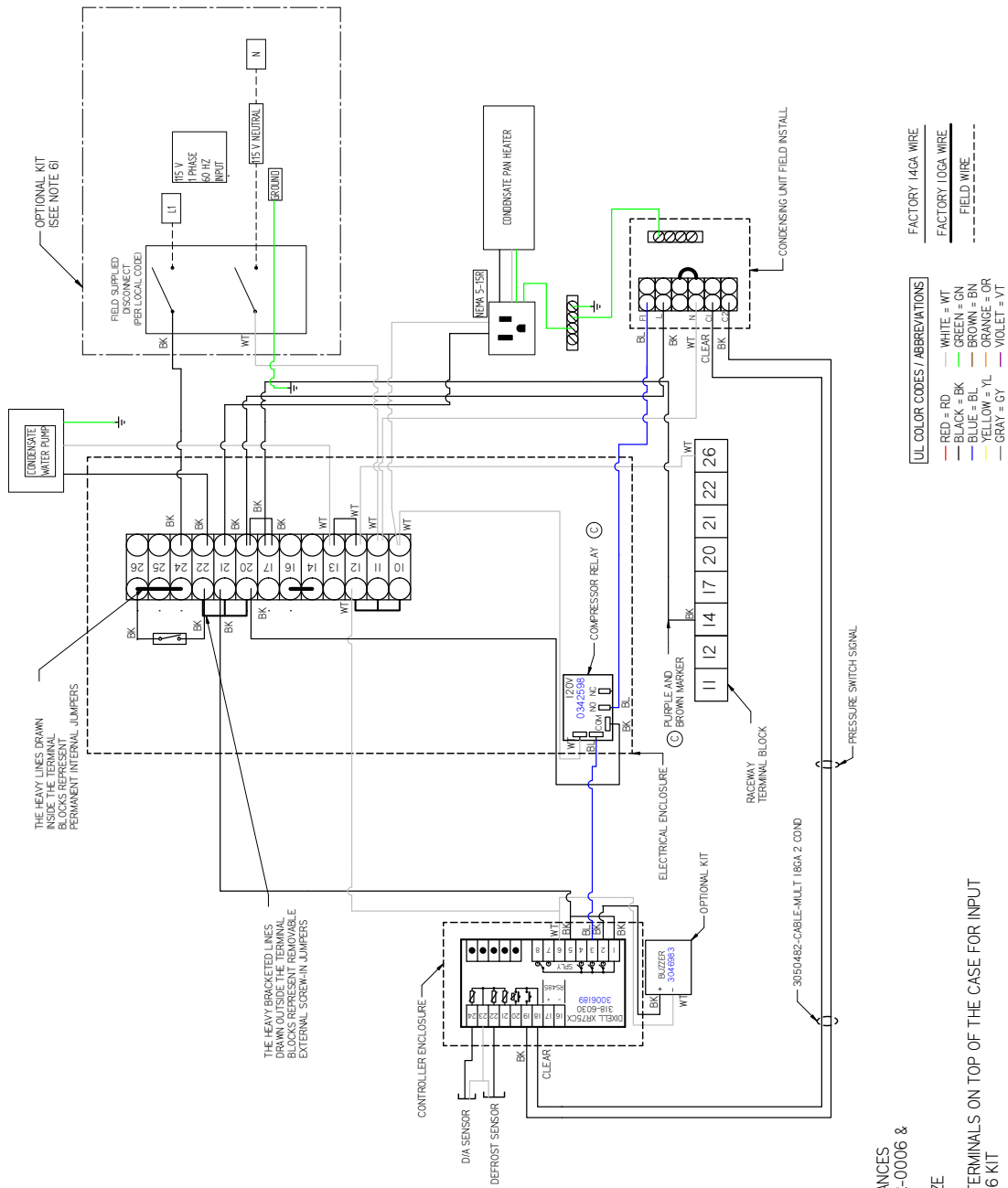
FACTORY 14GA WIRE
FACTORY 10GA WIRE
 FIELD WIRE

- NOTES:**
1. APPLICABLE STANDARDS / SPECIFICATIONS ASME Y14.5M-1994. DIMENSIONS AND TOLERANCES
 2. KEY PRODUCT CHARACTERISTICS PER EPR-0006 & IDENTIFIED WITH SYMBOL
 3. MATERIAL - WHITE BOND PAPER LETTER SIZE
 4. REF -
 5. IF CASE IS EQUIPPED WITH INNOVATOR II OR INNOVATOR III DOORS, IT DOES NOT INCLUDE DOOR A.S. HEATER. THE WIRE JUMPER IS BETWEEN TERMINAL 12-13 FOR DOOR ANTI-SWEAT, INSTEAD OF TERMINAL 10-13
 6. TERMINALS 1, 4, 14 AND 26 ARE CONNECTED TO TERMINALS ON TOP OF THE CASE FOR INPUT
 7. THE PACK-OUT ONLY APPLY FOR THE VF56 KIT
 8. DIXELL ALARM APPLY FOR THE KIT T167

Freedom Line
Air-Cooled Condensing Units
for Reach-in Cases

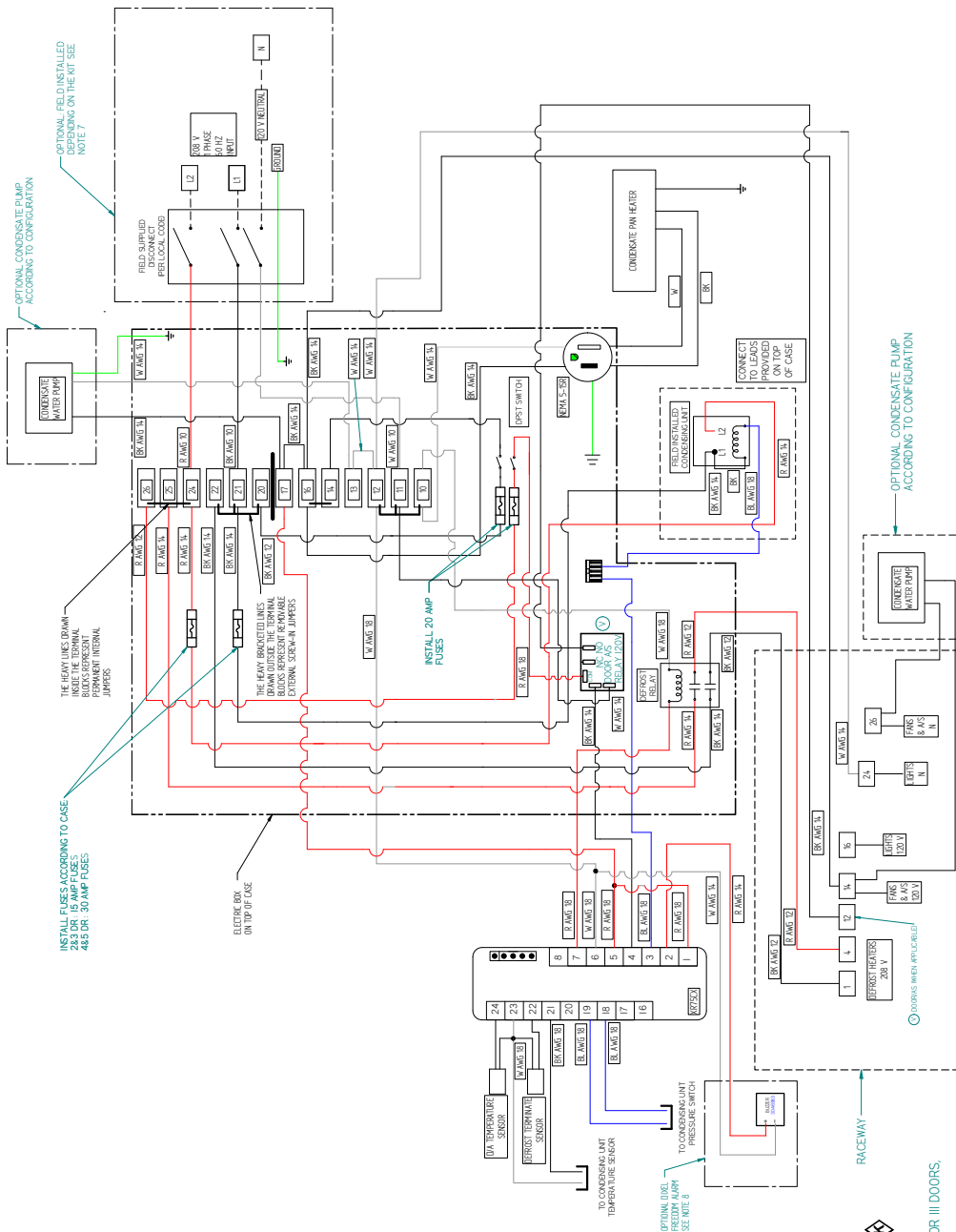
RFM, RFMN 120 V 1 Door

3142979 C



**RFL,RFLN 1 - 5 Door
Single Point 208V
3055656 V**

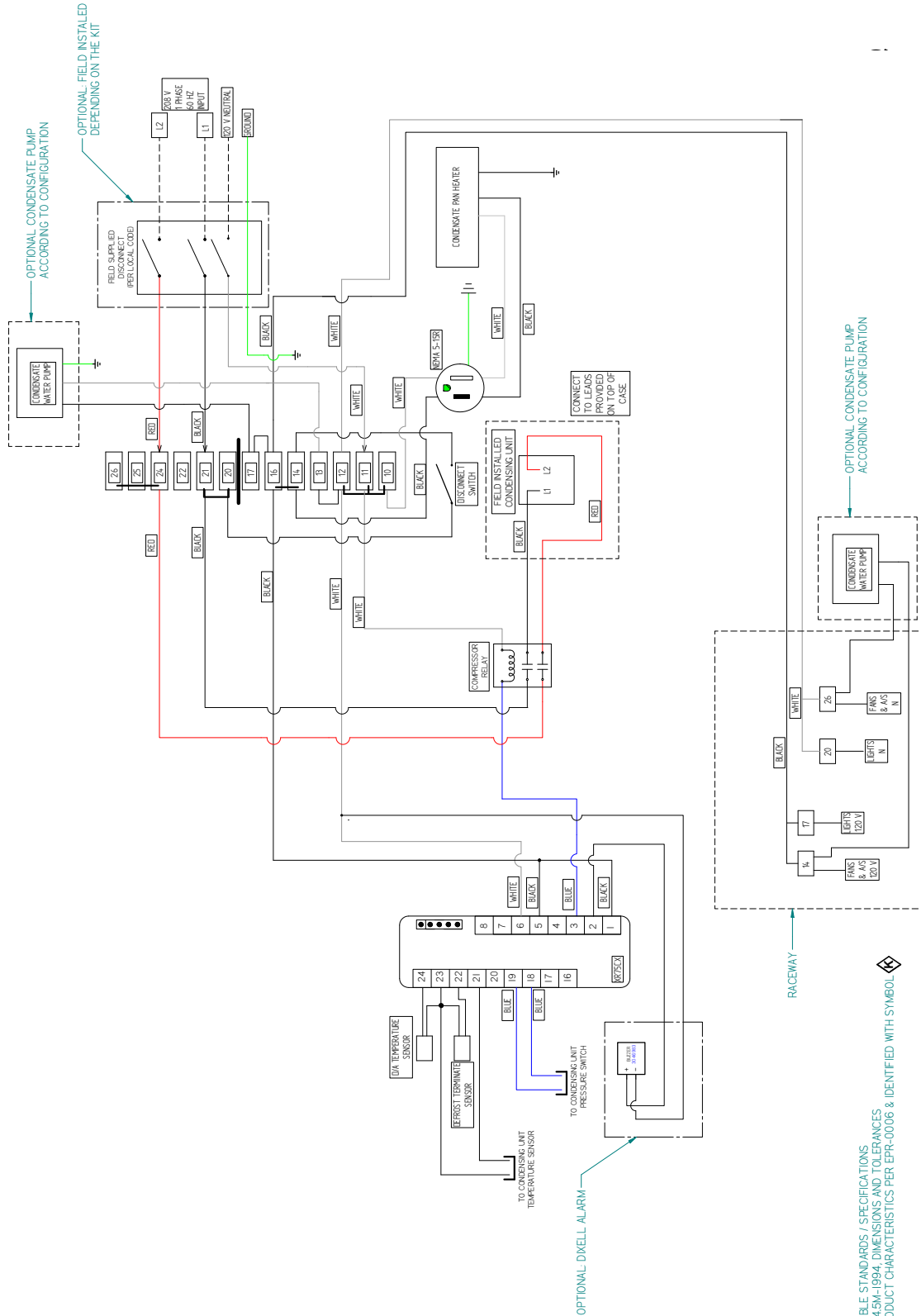
**Freedom Line
Air-Cooled Condensing Units
for Reach-in Cases**



- NOTES**
1. APPLICABLE STANDARDS / SPECIFICATIONS
ASME Y14.5M-1994 DIMENSIONS AND TOLERANCES
 2. KEY PRODUCT CHARACTERISTICS PER EPR-0006 & IDENTIFIED WITH SYMBOL
 3. MATERIAL - N/A
 4. IF CASE IS EQUIPPED WITH INNOVATOR II OR INNOVATOR III DOORS, IT DOES NOT INCLUDE ANTISEAT.
 5. IF CASE IS EQUIPPED WITH INNOVATOR II IT WILL NOT HAVE DOOR AS HEATER THE WIRING TO TERMINAL 12 AND 21 AND THE XRT5 TERMINAL 4 TO TERMINAL 12 IS ELIMINATED
 6. IF CASE IS EQUIPPED WITH INNOVATOR III THE WIRING FROM XRT5 TERMINAL 4 TO TERMINAL 12 IS ELIMINATED AND A JUMPER BE NEEDED TO BOTTOM RACEWAY BETWEEN TERMINAL 12 AND 13
 7. TERMINALS 1, 4, 10, 14, 17, 20, AND 26 ARE CONNECTED TO TERMINALS ON TOP OF THE CASE. FOR INPUT
 8. THE PACK-OUT ONLY APPLY FOR THE WK92 KIT
 9. DIXELL ALARM APPLY FOR THE KIT T167

**RFM,RFMN 4 & 5 Door Single Point
3056281 Q**

**Freedom Line
Air-Cooled Condensing Units
for Reach-in Cases**

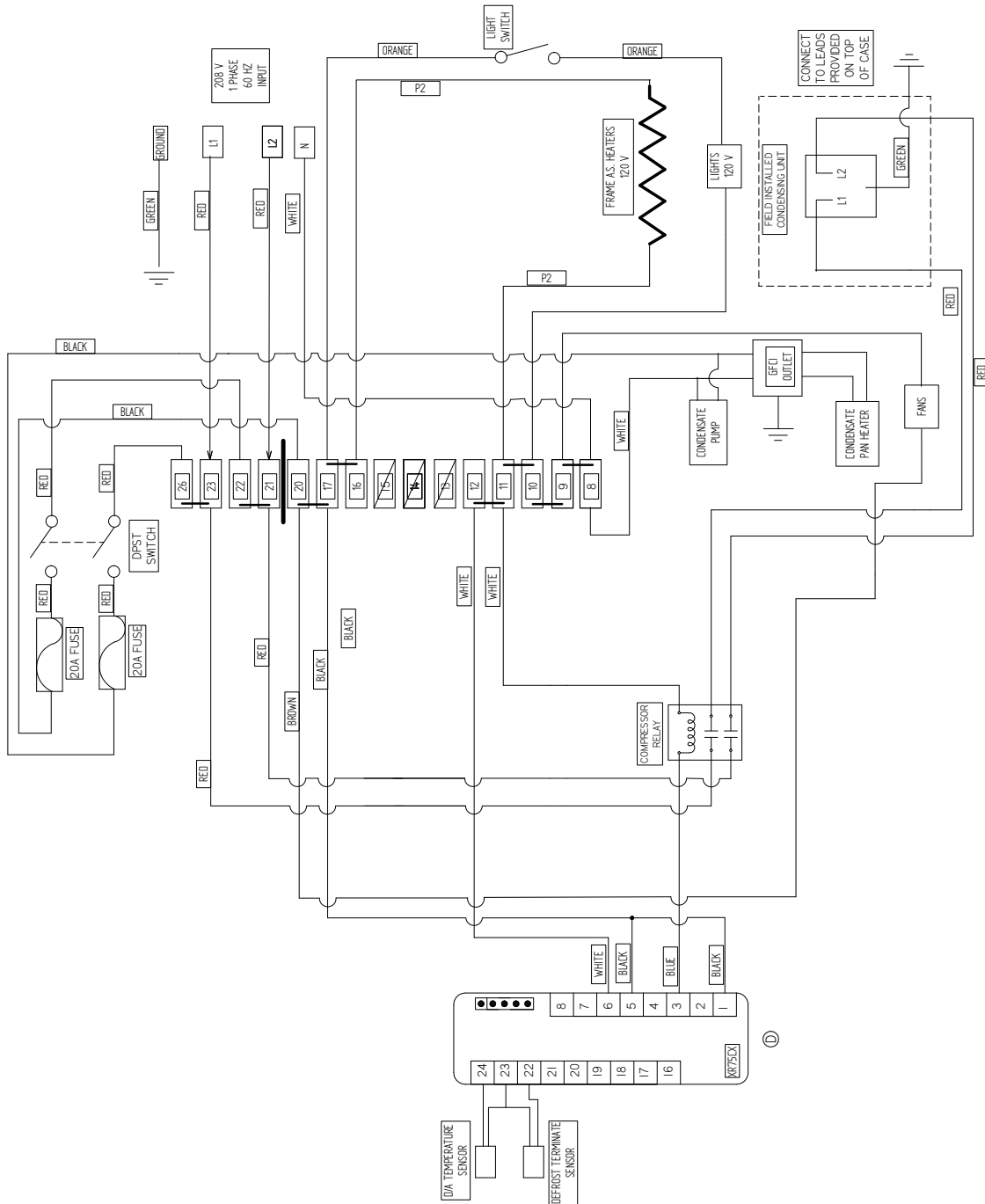


NOTES:
1. APPL CABLE STANDARDS / SPECIFICATIONS
ASME Y14.5M-1994, DIMENSIONS AND TOLERANCES
2. KEY PRODUCT CHARACTERISTICS PER EPR-0006 & IDENTIFIED WITH SYMBOL

Freedom Line
Air-Cooled Condensing Units
for Reach-in Cases

RFMNS 4 & 5 Door Single Point

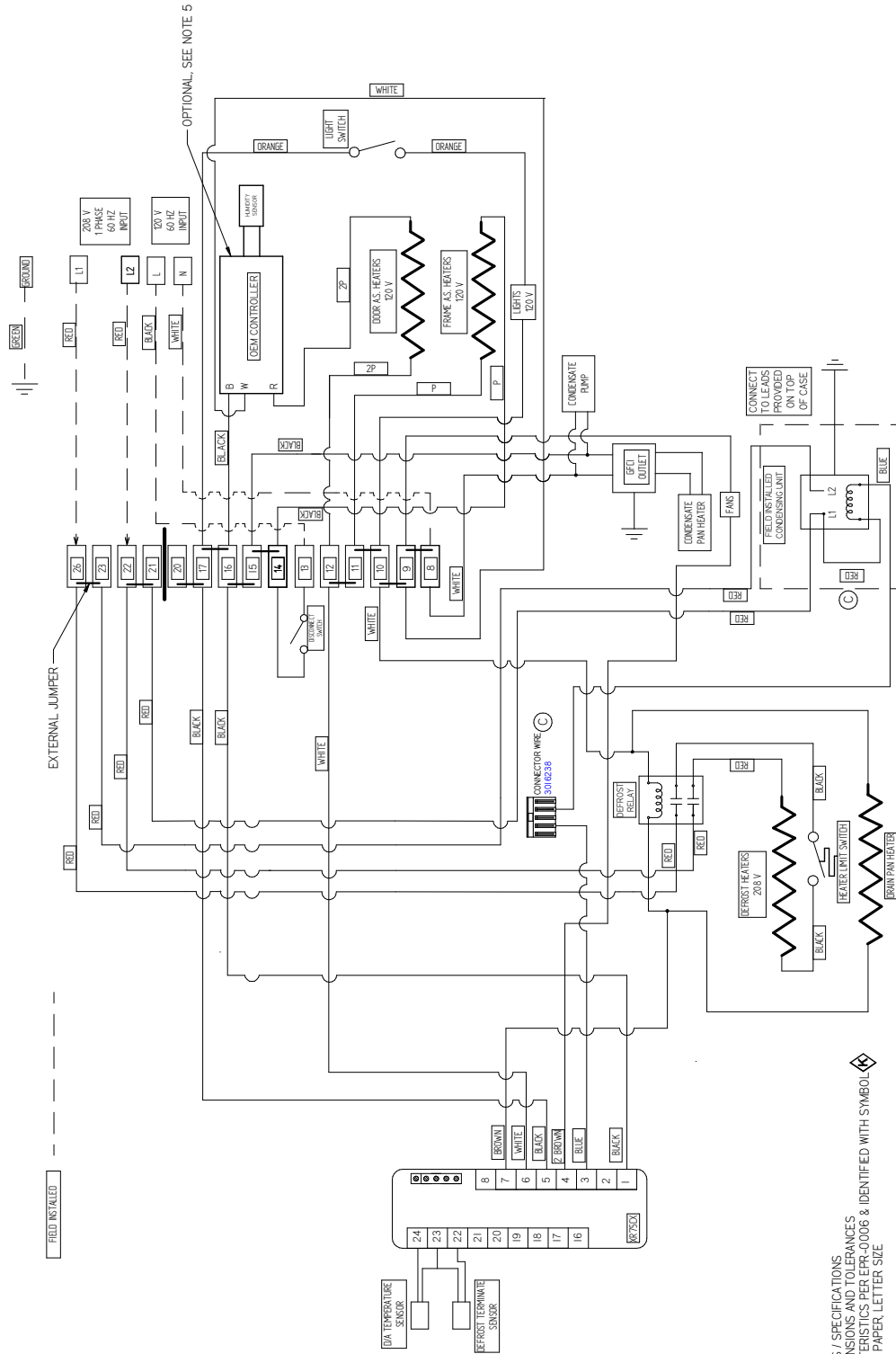
0539477 D



NOTES:
 1. APPLICABLE STANDARDS / SPECIFICATIONS
 ASME Y14.5M-1994; DIMENSIONS AND TOLERANCES

RFLTM 2 - 5 Door Single Point
3023601 D

Freedom Line
Air-Cooled Condensing Units
for Reach-in Cases



- NOTES:
1. APPLICABLE STANDARDS / SPECIFICATIONS: ASME Y14.5M-1994. DIMENSIONS AND TOLERANCES
 2. KEY PRODUCT CHARACTERISTICS PER EPR-0006 & IDENTIFIED WITH SYMBOL
 3. MATERIAL - WHITE BOND PAPER LETTER SIZE
 4. REF 0539476
 5. DASH LINE CONNECT CAN BE OPTIONAL. IF IT IS NOT REQUIRED, CONNECT AS FOLLOWS: DOOR LINE CONNECT TO TERMINAL BLOCK # 16. DOOR NEUTRAL CONNECT TO TERMINAL BLOCK # 9

| |
|---|
| <p>Freedom Line Air-Cooled Condensing Units for Reach-in Cases</p> |
|---|

| Case | Size | Kit | Condensing Unit ID |
|--------------|----------------------|----------------------|--------------------------|
| RFL | 1 Door | YG36 | HN007LTR (120V) |
| | 1 Door | TA52 | M6EL-H056-IAV-028 (208V) |
| | 2 Door | TJ78 | FFAL-010Z-CFV-142 |
| | 3 Door | TJ79 | FFAL-013Z-PFV-143 |
| | 4 Door | TA45 | FFAL-017Z-PFV-143 |
| 5 Door | TA45 | FFAL-017Z-PFV-143 | |
| RFM | 1 Door | YG37 | HN002MTR (120V) |
| | 2 Door | TA47 | M6EM-0020-IAA-121 |
| | 3 Door | TA46 | M6EM-0023-IAA-121 |
| | 4 Door | TA49 | M6ZM-0025-IAV-121 |
| | 5 Door | TJ81 | M6ZM-0038-IAV-121 |
| RFLTM | 2 Door | TA43 | FFAL-010Z-CFV-142 |
| | 3 Door | TA51 | FFAL-014Z-PFV-142 |
| | 4 Door | TJ80 | FFAL-017Z-PFV-143 |
| | 5 Door | TJ80 | FFAL-017Z-PFV-143 |
| RFLNS | 2 Door | TA43 | FFAL-010Z-CFV-142 |
| | 3 Door | TA44 | FFAL-013Z-PFV-143 |
| | 4 Door | TJ80 | FFAL-017Z-PFV-143 |
| | 5 Door | TJ80 | FFAL-017Z-PFV-143 |
| RFMNS | 2 Door | TA50 | M6EM-0020-IAA-028 |
| | 3 Door | TA48 | M6EM-0023-IAA-028 |
| | 4 Door | TJ77 | M6ZM-0025-IAV-078 |
| | 5 Door | TJ82 | M6ZM-0038-IAV-078 |