

We reserve the right to change or revise specifications and product design in connection with any feature of our products. Such changes do not entitle the buyer to corresponding changes, improvements, additions or replacements for equipment previously sold or shipped.

Item	Part #	Description	Wiring Item #	Item	Part #	Description	Wiring Item #
FAN ASSEMBLIES AND THERMOSTATS				LAMPS AND BALLASTS			
A.	12W High Efficiency Standard			C.	Ballast, Electronic		(3)
	End Compartment Fan Assembly		(1)		0135966	1 lamp (BA.4480883)	
	0477655	Fan Motor (MO.4410546)		D.	0039764	Lamp Starter (EP.4481081)	(4)
	0377253	Fan Blade (FB.4780616)					
		embossing away from motor		E.	Fluorescent Lamp		(5)
B.	0398558	Standard Non-Adjustable Defrost Thermostat (CT.4481088)	(2)			<i>Replace with like fixtures</i>	

Data sheet-Excel-CW2EGE

Note: Revision B: Added high glide refrigerant note. Other changes marked by bar, underline or circle.

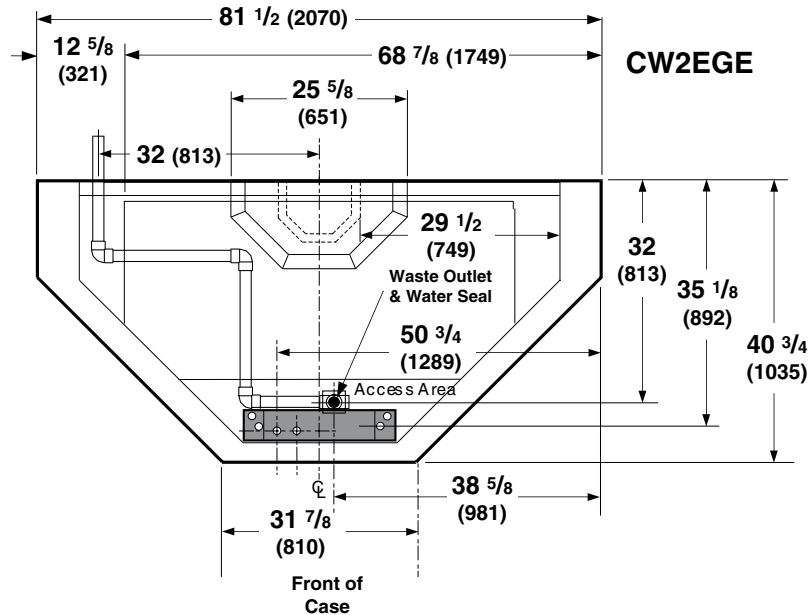
Engineering Plan Views

PHYSICAL DATA	
Merchandiser Drip Pipe (in.)	1 1/4
Merchandiser Liquid Line (in.)	1/2
Merchandiser Suction Line (in.)	1 1/8

Dimensions shown as inches and (mm).

Convertible Island End

11-2010



	CW2EGE
General	
Maximum O/S dimension of case back to front <i>(includes bumper)</i>	40 3/4 (1035)
Total width of case	81 1/2 (2070)
Width at front of case	31 7/8 (810)
Front of case to O/S edge of front base rail	12 5/8 (321)
Back of case to O/S edge of front base rail	28 1/8 (714)
RH edge of case to O/S edge of LH base rail	68 7/8 (1749)
LH edge of case to O/S edge of LH base rail	12 5/8 (321)
Rear to front of canopy	13 (330)
Width of canopy	25 5/8 (651)
Width of base rail	2 1/8 (54)
Access area between front base rail and splashguard	8 1/8 (206)
Electrical Service ████████ <i>(Electrical Field Wiring connection point)</i>	
Center of Electrical service to O/S edge of front base rail	7 (178)
RH edge of case to center of knockout	50 3/4 (1289)
Length of electrical raceway	22 (559)
Waste Outlet ████████	
RH edge of case to the center of waste outlet	38 5/8 (981)
Center of waste outlet to outside of front base rail	3 7/8 (98)
Water Seal ████████	
Center of case to center of pipe connection	32 (813)
Schedule 40 PVC drip pipe	1 1/4 (32)
<i>Water seal outlet must clear front skid rail.</i>	

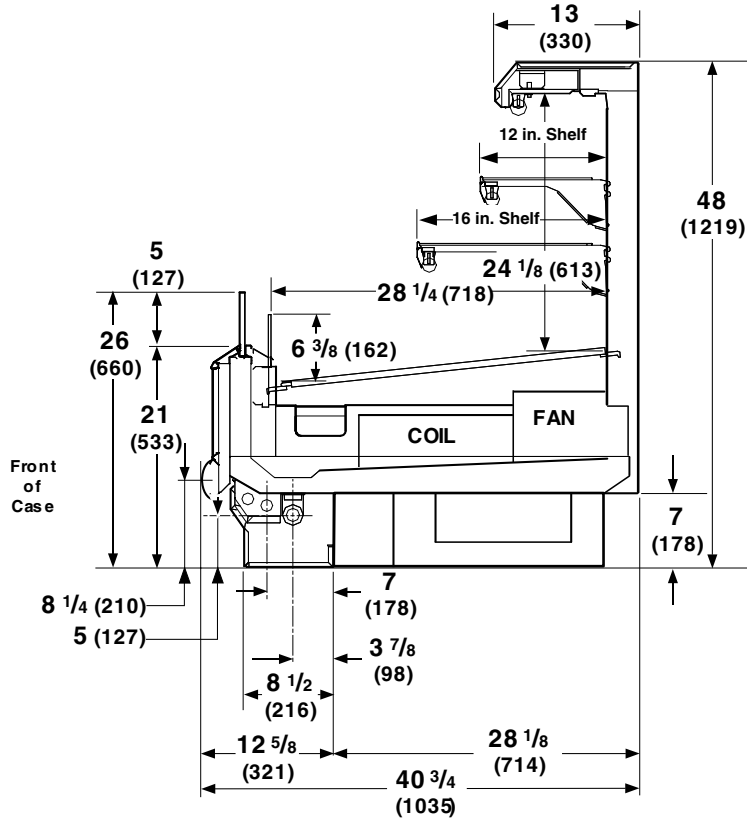
Convertible Island End, 2 Display Levels



Husmann refrigerated merchandisers configured for sale for use in the United States meet or surpass the requirements of the DOE 2017 energy efficiency standards.



Dimensions shown as inches and (mm).



PHYSICAL DATA

Estimated Charge (lb)***

CW2EGE 1.7 lb 18 oz 1.1 kg

***This is an average for all refrigerant types. Actual refrigerant charge may vary by approximately 0.5 lb (8 oz / 0.2 kg).

NSF Certification

This merchandiser model is manufactured to meet ANSI/NSF (National Sanitation Foundation) Standard #7 requirements for construction, materials & cleanability.

REFRIGERATION DATA

Note: This data is based on store temperature and humidity that does not exceed 75°F and 55% R.H.

	CW2EGE§
Discharge Air (°F)	28
Evaporator (°F)	21

Unit Sizing (°F) 19
 § Average evaporator temperature shown. Use dew point for high glide refrigerants for unit sizing. Care should be taken to use the dew point in PT tables for measuring and adjusting superheat. Adjust evaporator pressure as needed to maintain discharge air temperature shown.

Btu/hr/case*	CW2EGE
Parallel	4600
Conventional	5100

*Energy efficient motors are standard on the CW2EGE.

DEFROST DATA

	CW2EGE
Frequency (hr)	6
Defrost Water (lb/case/day)	8

(± 15% based on a case configuration and product loading).

OFFTIME	CW2EGE
Temp Term (°F)	48°
Failsafe (minutes)	45

ELECTRIC OR GAS Not Recommended

Standard Defrost Thermostat

Close on rise: close 48°F — open 33°F

CONVENTIONAL CONTROLS

Low Pressure Backup Control

	CW2EGE
CI/CO (Temp °F)*	17°/7°

Indoor Unit Only, Pressure Defrost

Termination (Temp °F)** 48°

**Use a Temperature Pressure Chart to determine PSIG conversions.

Excel **CW2EGE** Convertible Island End

Electrical Data

			CW2EGE		
Number of Fans—12W			2		
			Amperes	Watts	
Evaporator Fan					
120V	60Hz	Standard	0.60	50	
120V	50Hz	Standard			
230V	60Hz	Export	NA		
230V	50Hz	Export	NA		
120V	60Hz	Energy Efficient	(See Note 1 below)		
230V	60Hz	Energy Efficient			
Cycling Anti-sweat Heaters			None		
Minimum Circuit Ampacity					
120V	60Hz	Standard	0.80		
120V	50Hz	Standard			
230V	60Hz	Export	NA		
230V	50Hz	Export	NA		
120V	60Hz	Energy Efficient	(See Note 1 below)		
230V	60Hz	Energy Efficient			
Maximum Over Current Protection 120V			20		
Maximum Over Current Protection 230V			15		
208V Electric Defrost Heaters			None		
Standard Lighting (T-8 Fluorescent)					
1 Row	Canopy		0.80	40	
<p>ONLY LIGHTING CONFIGURATIONS THAT ARE COMPLIANT WITH THE U.S. DEPT. OF ENERGY (DOE) 2017 REGULATION ARE AVAILABLE FOR SALE FOR USE IN THE U.S.A.</p>					
Optional Lighting (T-8 Fluorescent)					
Additional 1 Row Canopy					
Additional 2 Row Canopy			(See Note 2 below)		
Optional Shelf Lighting (T-8 Fluorescent)					
1 Row	of Shelves		0.80	40	
2 Rows	of Shelves		1.60	80	

Note 1: All CW2 end compartments are equipped with energy efficient fan motors as standard.

Note 2: CW2 end compartments are not available with 2 row canopy lighting due to space constraints.

Please note: some combinations of fluorescent lights on this case model may not be compliant with DOE 2017 and may not be available to order in the US and Canada. More lighting options are available with LED lights. The Hussmann Product Configurator will not allow lighting options that do not comply with the DOE 2017 standards.

Product Data

<i>Recommended Usable Cube</i> ¹ (Cu Ft/Case)	18.47 ft ³ /case (1.72 m ³ /case)
<i>AHRI Total Display Area</i> ² (Sq Ft/Case)	18.3 ft ² /case (5.58 m ² /case)
<i>Shelf Area</i> ³ (Sq Ft/Case)	30.56 ft ² /case (9.31 m ² /case)

- ¹ AHRI Refrigerated Volume less shelving and other unusable space: Refrigerated Volume/Unit of Length, ft³/ft [m³/m]
² Computed using AHRI 1200 standard methodology: Total Display Area, ft² [m²]/Unit of Length, ft [m]
³ Shelf surface area is composed of bottom deck plus standard shelf complement, as shown in the Hussmann *Product Reference Guide*. The standard shelf complement for this model is (1) row of 12-inch shelf and (1) row of 16-inch shelf.

ESTIMATED SHIPPING WEIGHT ⁴

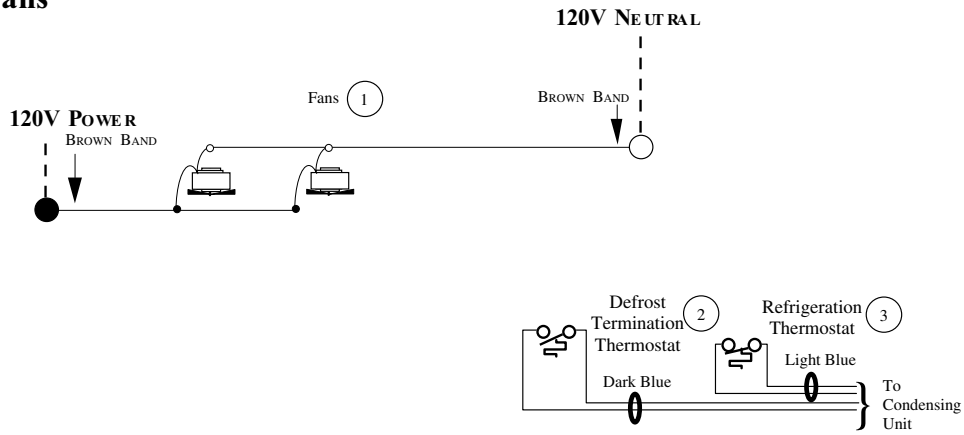
CW2EGE End Case

700 (318)

⁴ Actual weights will vary according to optional kits included.

Fan Wiring Offtime Defrost

2 Fans



WARNING

All components must have mechanical ground, and the merchandiser must be grounded.

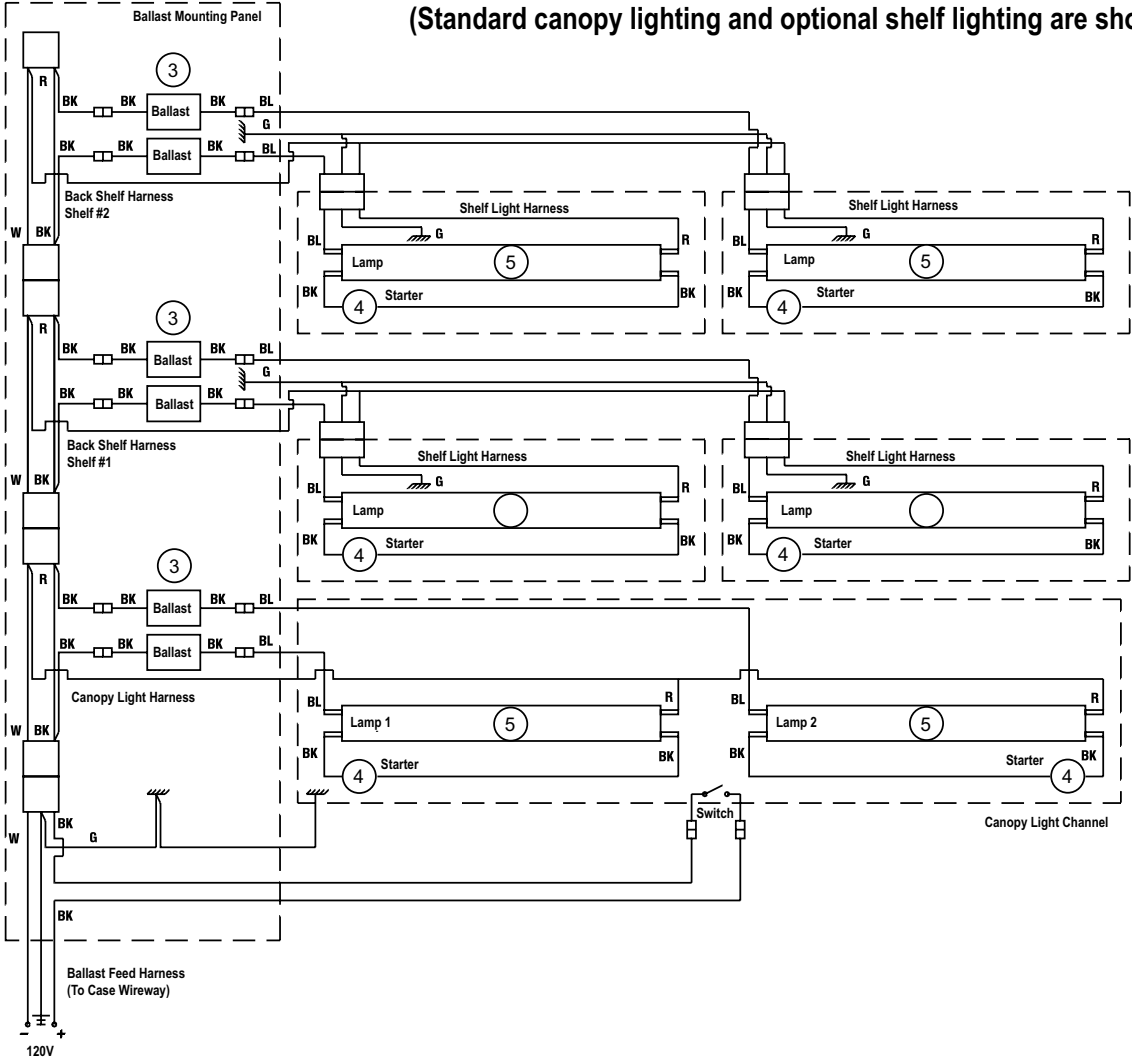
CIRCLED NUMBERS = PARTS LIST ITEM NUMBERS

R = Red Y = Yellow G = Green BL = Blue BK = Black W = White

● = 120V POWER ○ = 120V NEUTRAL ≡ = Field GROUND ≡≡ = Case GROUND

Light Circuits

CW2EGE END COMPARTMENT LIGHTING SCHEMATIC
 (Standard canopy lighting and optional shelf lighting are shown)



WARNING

All components must have mechanical ground, and the merchandiser must be grounded.

Circled numbers = Parts list Item Numbers

R = Red Y = Yellow G = Green BL = Blue BK = Black W = White

● = 120V POWER ○ = 120V NEUTRAL