



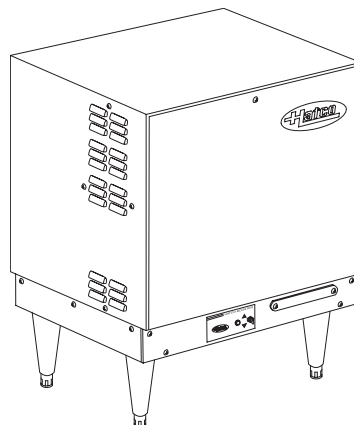
# IMPERIAL BOOSTER Electric Water Heater

## *S Series*

---

S-6	S-17	S-39
S-7	S-18	S-40
S-9	S-24	S-45
S-12	S-27	S-54
S-13	S-30	S-57
S-15	S-36	S-58

---

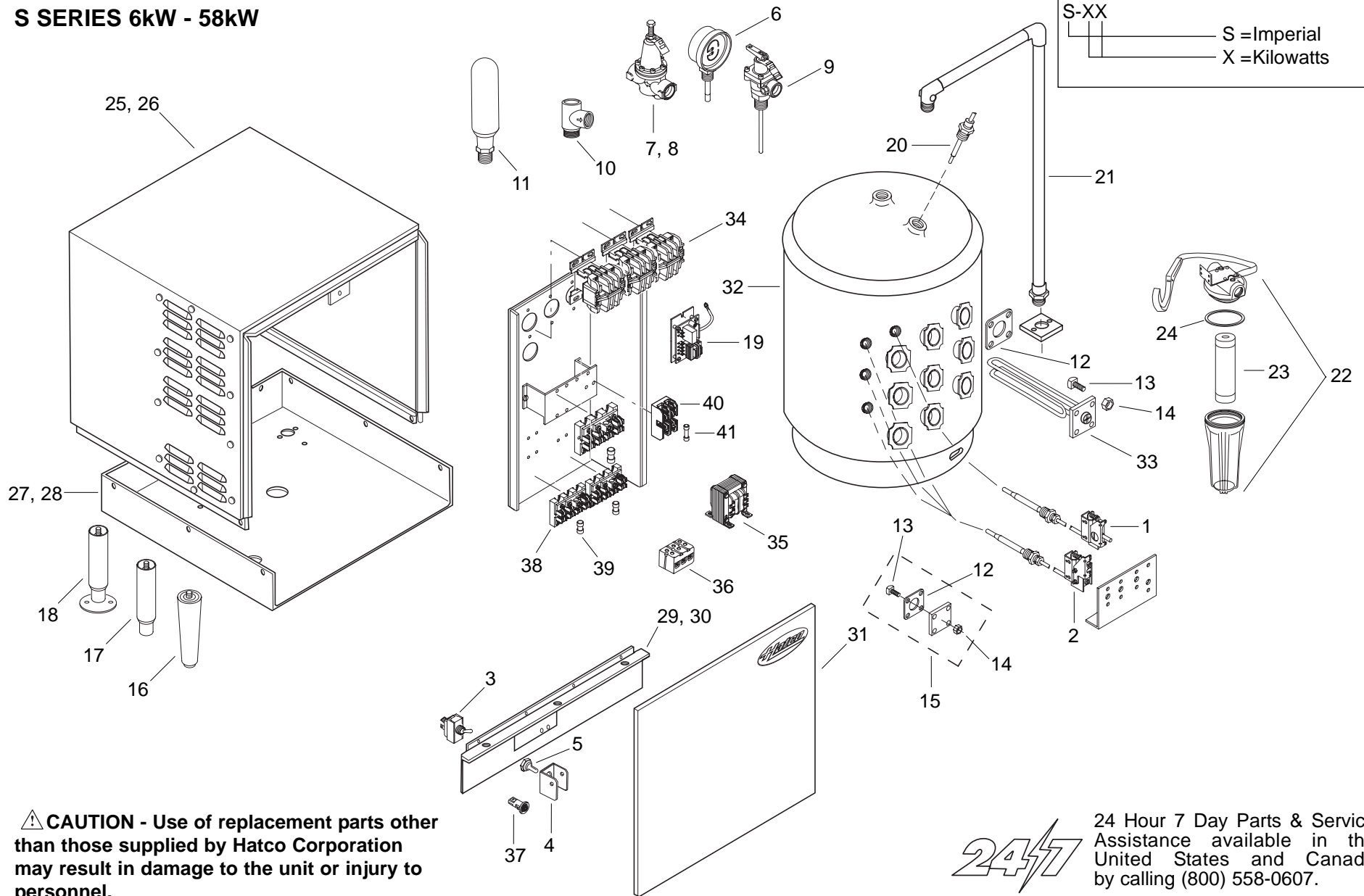


## REPLACEMENT PARTS LIST

---

# HATCO IMPERIAL ELECTRIC BOOSTER HEATER S SERIES 6kW - 58kW

**Model Designation**  
S-XX  
S = Imperial  
X = Kilowatts



**⚠ CAUTION - Use of replacement parts other than those supplied by Hatco Corporation may result in damage to the unit or injury to personnel.**



24 Hour 7 Day Parts & Service Assistance available in the United States and Canada by calling (800) 558-0607.

**PARTS COMMON TO ALL  
IMPERIAL BOOSTER MODELS  
6kW-58kW**

ITEM	DESCRIPTION	PART NO.	QTY.
1	High Limit, Safety Thermostat	02.16.116.00	1
2	Thermostat, Control	02.16.024.00	1-3
3	On/Off Toggle Switch	R02.19.008A.00	1
4	Guard, Toggle Switch	04.01.038.00	1
5	Toggle Switch Boot, Rubber	02.20.040.00	1
6	Temperature/Pressure Gauge	03.01.003.00	2
7	Pressure Reducing Valve, Iron	03.02.004.00	1
8	Pressure Reducing Valve, Brass (Optional)	03.02.015.00	1
9	Temperature/Pressure Relief Valve	03.02.022.00	1
10	Back Pressure Relief Valve (Optional)	03.02.039.00	1
11	Shock Absorber (Optional)	03.40.057.00	1
12	Gasket, Heating Element	02.11.012.00	1-9
13	Bolt, Element Mounting	05.04.022.00	4-36
14	Nut, Element Mounting	05.04.028.00	4-36
15	Blank Element Flange with Gasket and Hardware	R02.11.013.00	1-2
16	Leg, Plastic	05.30.069.00*	4
17	Leg, S.S.	05.30.070.00*	4
18	Leg, Deck Mount S.S. (Optional)	05.30.073.00*	4
19	Low Water Cut Off Board	R02.01.210.00	1
20	Probe, Low Water Cut Off	02.40.001.00	1
21	Heat Trap Assembly	03.50.001.00	1
22	Water Treatment Canister and Cartridge (Optional)	03.05.061.00	1
23	Cartridge Only	03.05.061A.00	1
24	O-Ring	03.05.061B.00	1

\* Units manufactured during or before July 1999 use part number 05.30.008.00 for the plastic leg, 04.01.013.00 for the S.S. leg and 04.01.014.00 for the S.S. deck mount leg.

**IMPERIAL BOOSTER  
SHEET METAL BODY PARTS**

ITEM	DESCRIPTION	PART NO.
25	Jacket, Painted	R04.03.024.00
26	Jacket, S.S. (Optional)	R04.03.031.00
27	Base, Painted	R04.03.002P.00
28	Base, S.S. (Optional)	R04.03.004.00
29	Base, Front, Painted	R04.03.030.00
30	Base, Front, S.S. (Optional)	R04.03.032.00
31	Front Cover, S.S.	R04.03.025.00

NOTE: S.S. is an abbreviation for stainless steel.

NOTE: Part numbers listed for sheet metal body parts apply only to units manufactured during or after October 1996. Consult factory with model and serial number for units manufactured before October 1996.

NOTE: The last four digits in a ten digit numerical serial number is the manufacturing date code.

Example: Serial number 1021059907 has a date code of 9907 which indicates the following: 9907



Please also note, effective January 2001 the serial number date code was changed to reflect the year and week of manufacture.

Example: xxxxxx 0124



**PARTS SPECIFIC TO MODEL S-6**

ITEM	DESCRIPTION	208V	208V	240V	240V	480V	480V	208V	208V
		Single Phase	Three Phase	Single Phase	Three Phase	Single Phase	Three Phase	Single Phase	Three Phase
32	Tank with Gaskets	R01.02.007S.00	R01.02.007S.00	R01.02.007S.00	R01.02.007S.00	---	R01.02.007S.00	R01.02.007S.00	R01.02.007S.00
33	Heating Element	R02.04.302.00	R02.04.302.00	R02.04.303.00	R02.04.303.00	---	R02.04.305.00	R02.04.302.00	R02.04.302.00
	Quantity	2	2	2	2	---	2	2	2
34	Contactors	02.01.015.00	02.01.015.00	02.01.015.00	02.01.015.00	---	02.01.015.00	02.01.016.00	02.01.016.00
	Quantity	1	1	1	1	---	1	1	1
35	Transformer, Step Down	02.17.004.00	02.17.004.00	02.17.004.00	02.17.004.00	---	02.17.005.00	---	---
36	Terminal Block	R02.15.046.00	R02.15.046.00	R02.15.046.00	R02.15.046.00	---	---	R02.15.046.00	R02.15.046.00
37	Indicator Light, Red	02.19.154.00	02.19.154.00	02.19.154.00	02.19.154.00	---	02.19.154.00	02.19.151.00	02.19.151.00
38A	Power Fuse Block	---	---	---	---	---	---	---	---
	Quantity	---	---	---	---	---	---	---	---
38B	Power Fuse Block	---	---	---	---	---	---	---	---
	Quantity	---	---	---	---	---	---	---	---
38C	Power Fuse Block	---	---	---	---	---	---	---	---
	Quantity	---	---	---	---	---	---	---	---
38D	Power Fuse Block	---	---	---	---	---	---	---	---
	Quantity	---	---	---	---	---	---	---	---
38E	Power Fuse Block	---	---	---	---	---	---	---	---
	Quantity	---	---	---	---	---	---	---	---
39A	Power Fuse (2 Pack)	---	---	---	---	---	---	---	---
	Quantity	---	---	---	---	---	---	---	---
39B	Power Fuse (2 Pack)	---	---	---	---	---	---	---	---
	Quantity	---	---	---	---	---	---	---	---
39C	Power Fuse (2 Pack)	---	---	---	---	---	---	---	---
	Quantity	---	---	---	---	---	---	---	---
39D	Power Fuse (2 Pack)	---	---	---	---	---	---	---	---
	Quantity	---	---	---	---	---	---	---	---
40	Control Fuse Block	02.03.022.00	02.03.022.00	02.03.022.00	02.03.022.00	---	02.03.023.00	02.03.004.00	02.03.004.00
41	Control Fuse (2 Pack)	R02.03.014.02	R02.03.014.02	R02.03.014.02	R02.03.014.02	---	R02.03.013.02	R02.03.001.02	R02.03.001.02
	Electrical Diagram	HC1-2455	HC1-2455	HC1-2455	HC1-2455	---	HC1-2455	HC1-391	HC1-391

Shaded area reflects **export models only**.

<b>PARTS SPECIFIC TO MODEL S-6</b>						
<b>ITEM</b>	<b>DESCRIPTION</b>	<b>240V</b>	<b>240V</b>	<b>380V</b>	<b>415V</b>	<b>600V</b>
		<b>Single Phase</b>	<b>Three Phase</b>	<b>Three Phase</b>	<b>Three Phase</b>	<b>Three Phase</b>
32	Tank with Gaskets	R01.02.007S.00	R01.02.007S.00	R01.02.007S.00	R01.02.007S.00	R01.02.007S.00
33	Heating Element	R02.04.303.00	R02.04.303.00	R02.04.510.00	R02.04.452.00	R02.04.404.00
	Quantity	2	2	3	3	3
34	Contactors	02.01.016.00	02.01.016.00	02.01.016.00	02.01.016.00	02.01.016.00
	Quantity	1	1	1	1	1
35	Transformer, Step Down	---	---	R02.17.003.00	R02.17.002.00	02.17.009.00
36	Terminal Block	R02.15.046.00	R02.15.046.00	---	---	---
37	Indicator Light, Red	02.19.151.00	02.19.151.00	02.19.151.00	02.19.151.00	02.19.151.00
38A	Power Fuse Block	---	---	---	---	---
	Quantity	---	---	---	---	---
38B	Power Fuse Block	---	---	---	---	---
	Quantity	---	---	---	---	---
38C	Power Fuse Block	---	---	---	---	---
	Quantity	---	---	---	---	---
38D	Power Fuse Block	---	---	---	---	---
	Quantity	---	---	---	---	---
38E	Power Fuse Block	---	---	---	---	---
	Quantity	---	---	---	---	---
39A	Power Fuse (2 Pack)	---	---	---	---	---
	Quantity	---	---	---	---	---
39B	Power Fuse (2 Pack)	---	---	---	---	---
	Quantity	---	---	---	---	---
39C	Power Fuse (2 Pack)	---	---	---	---	---
	Quantity	---	---	---	---	---
39D	Power Fuse (2 Pack)	---	---	---	---	---
	Quantity	---	---	---	---	---
40	Control Fuse Block	02.03.004.00	02.03.004.00	---	---	02.03.016.00
41	Control Fuse (2 Pack)	R02.03.001.02	R02.03.001.02	R02.03.005.02	R02.03.005A.02	R02.03.021.02
	Electrical Diagram	HC1-391	HC1-391	HC1-396	HC1-396	HC1-396

Shaded area reflects **export models only**.

**PARTS SPECIFIC TO MODEL S-7**

ITEM	DESCRIPTION	208V	208V	240V	240V	480V	480V	208V	208V
		Single Phase	Three Phase	Single Phase	Three Phase	Single Phase	Three Phase	Single Phase	Three Phase
32	Tank with Gaskets	R01.02.007S.00	R01.02.007S.00	R01.02.007S.00	R01.02.007S.00	---	R01.02.007S.00	R01.02.007S.00	R01.02.007S.00
33	Heating Element	R02.04.350.00	R02.04.350.00	R02.04.351.00	R02.04.351.00	---	R02.04.352.00	R02.04.350.00	R02.04.350.00
	Quantity	2	2	2	2	---	2	2	2
34	Contactora	02.01.015.00	02.01.015.00	02.01.015.00	02.01.015.00	---	02.01.015.00	02.01.016.00	02.01.016.00
	Quantity	1	1	1	1	---	1	1	1
35	Transformer, Step Down	02.17.004.00	02.17.004.00	02.17.004.00	02.17.004.00	---	02.17.005.00	---	---
36	Terminal Block	R02.15.046.00	R02.15.046.00	R02.15.046.00	R02.15.046.00	---	---	R02.15.046.00	R02.15.046.00
37	Indicator Light, Red	02.19.154.00	02.19.154.00	02.19.154.00	02.19.154.00	---	02.19.154.00	02.19.151.00	02.19.151.00
38A	Power Fuse Block	---	---	---	---	---	---	---	---
	Quantity	---	---	---	---	---	---	---	---
38B	Power Fuse Block	---	---	---	---	---	---	---	---
	Quantity	---	---	---	---	---	---	---	---
38C	Power Fuse Block	---	---	---	---	---	---	---	---
	Quantity	---	---	---	---	---	---	---	---
38D	Power Fuse Block	---	---	---	---	---	---	---	---
	Quantity	---	---	---	---	---	---	---	---
38E	Power Fuse Block	---	---	---	---	---	---	---	---
	Quantity	---	---	---	---	---	---	---	---
39A	Power Fuse (2 Pack)	---	---	---	---	---	---	---	---
	Quantity	---	---	---	---	---	---	---	---
39B	Power Fuse (2 Pack)	---	---	---	---	---	---	---	---
	Quantity	---	---	---	---	---	---	---	---
39C	Power Fuse (2 Pack)	---	---	---	---	---	---	---	---
	Quantity	---	---	---	---	---	---	---	---
39D	Power Fuse (2 Pack)	---	---	---	---	---	---	---	---
	Quantity	---	---	---	---	---	---	---	---
40	Control Fuse Block	02.03.022.00	02.03.022.00	02.03.022.00	02.03.022.00	---	02.03.023.00	02.03.004.00	02.03.004.00
41	Control Fuse (2 Pack)	R02.03.014.02	R02.03.014.02	R02.03.014.02	R02.03.014.02	---	R02.03.013.02	R02.03.001.02	R02.03.001.02
	Electrical Diagram	HC1-2455	HC1-2455	HC1-2455	HC1-2455	---	HC1-2455	HC1-391	HC1-391

Shaded area reflects **export models only**.

**PARTS SPECIFIC TO MODEL S-7**

ITEM	DESCRIPTION	240V	240V	380V	415V	600V
		Single Phase	Three Phase	Three Phase	Three Phase	Three Phase
32	Tank with Gaskets	R01.02.007S.00	R01.02.007S.00	R01.02.007S.00	R01.02.007S.00	R01.02.007S.00
33	Heating Element	R02.04.351.00	R02.04.351.00	R02.04.303.00	R02.04.510.00	R02.04.502.00
	Quantity	2	2	3	3	3
34	Contactator	02.01.016.00	02.01.016.00	02.01.016.00	02.01.016.00	02.01.016.00
	Quantity	1	1	1	1	1
35	Transformer, Step Down	---	---	R02.17.003.00	R02.17.002.00	02.17.009.00
36	Terminal Block	R02.15.046.00	R02.15.046.00	---	---	---
37	Indicator Light, Red	02.19.151.00	02.19.151.00	02.19.151.00	02.19.151.00	02.19.151.00
38A	Power Fuse Block	---	---	---	---	---
	Quantity	---	---	---	---	---
38B	Power Fuse Block	---	---	---	---	---
	Quantity	---	---	---	---	---
38C	Power Fuse Block	---	---	---	---	---
	Quantity	---	---	---	---	---
38D	Power Fuse Block	---	---	---	---	---
	Quantity	---	---	---	---	---
38E	Power Fuse Block	---	---	---	---	---
	Quantity	---	---	---	---	---
39A	Power Fuse (2 Pack)	---	---	---	---	---
	Quantity	---	---	---	---	---
39B	Power Fuse (2 Pack)	---	---	---	---	---
	Quantity	---	---	---	---	---
39C	Power Fuse (2 Pack)	---	---	---	---	---
	Quantity	---	---	---	---	---
39D	Power Fuse (2 Pack)	---	---	---	---	---
	Quantity	---	---	---	---	---
40	Control Fuse Block	02.03.004.00	02.03.004.00	---	---	02.03.016.00
41	Control Fuse (2 Pack)	R02.03.001.02	R02.03.001.02	R02.03.005.02	R02.03.005A.02	R02.03.021.02
	Electrical Diagram	HC1-391	HC1-391	HC1-396	HC1-396	HC1-396

Shaded area reflects **export models only**.

**PARTS SPECIFIC TO MODEL S-9**

ITEM	DESCRIPTION	208V	208V	240V	240V	480V	480V	208V	208V
		Single Phase	Three Phase	Single Phase	Three Phase	Single Phase	Three Phase	Single Phase	Three Phase
32	Tank with Gaskets	R01.02.007S.00	R01.02.007S.00	R01.02.007S.00	R01.02.007S.00	---	R01.02.007S.00	R01.02.007S.00	R01.02.007S.00
33	Heating Element	R02.04.450.00	R02.04.450.00	R02.04.451.00	R02.04.451.00	---	R02.04.453.00	R02.04.450.00	R02.04.450.00
	Quantity	2	2	2	2	---	2	2	2
34	Contactora	02.01.015.00	02.01.015.00	02.01.015.00	02.01.015.00	---	02.01.015.00	02.01.016.00	02.01.016.00
	Quantity	1	1	1	1	---	1	1	1
35	Transformer, Step Down	02.17.004.00	02.17.004.00	02.17.004.00	02.17.004.00	---	02.17.005.00	---	---
36	Terminal Block	R02.15.046.00	R02.15.046.00	R02.15.046.00	R02.15.046.00	---	---	R02.15.046.00	R02.15.046.00
37	Indicator Light, Red	02.19.154.00	02.19.154.00	02.19.154.00	02.19.154.00	---	02.19.154.00	02.19.151.00	02.19.151.00
38A	Power Fuse Block	---	---	---	---	---	---	---	---
	Quantity	---	---	---	---	---	---	---	---
38B	Power Fuse Block	---	---	---	---	---	---	---	---
	Quantity	---	---	---	---	---	---	---	---
38C	Power Fuse Block	---	---	---	---	---	---	---	---
	Quantity	---	---	---	---	---	---	---	---
38D	Power Fuse Block	---	---	---	---	---	---	---	---
	Quantity	---	---	---	---	---	---	---	---
38E	Power Fuse Block	---	---	---	---	---	---	---	---
	Quantity	---	---	---	---	---	---	---	---
39A	Power Fuse (2 Pack)	---	---	---	---	---	---	---	---
	Quantity	---	---	---	---	---	---	---	---
39B	Power Fuse (2 Pack)	---	---	---	---	---	---	---	---
	Quantity	---	---	---	---	---	---	---	---
39C	Power Fuse (2 Pack)	---	---	---	---	---	---	---	---
	Quantity	---	---	---	---	---	---	---	---
39D	Power Fuse (2 Pack)	---	---	---	---	---	---	---	---
	Quantity	---	---	---	---	---	---	---	---
40	Control Fuse Block	02.03.022.00	02.03.022.00	02.03.022.00	02.03.022.00	---	02.03.022.00	02.03.004.00	02.03.004.00
41	Control Fuse (2 Pack)	R02.03.014.02	R02.03.014.02	R02.03.014.02	R02.03.014.02	---	R02.03.013.02	R02.03.001.02	R02.03.001.02
	Electrical Diagram	HC1-2455	HC1-2455	HC1-2455	HC1-2455	---	HC1-2455	HC1-391	HC1-391

Shaded area reflects **export models only**.

**PARTS SPECIFIC TO MODEL S-9**

ITEM	DESCRIPTION	240V	240V	380V	415V	600V
		Single Phase	Three Phase	Three Phase	Three Phase	Three Phase
32	Tank with Gaskets	R01.02.007S.00	R01.02.007S.00	R01.02.007S.00	R01.02.007S.00	R01.02.007S.00
33	Heating Element	R02.04.451.00	R02.04.451.00	R02.04.351.00	R02.04.303.00	R02.04.304.00
	Quantity	2	2	3	3	3
34	Contactora	02.01.016.00	02.01.016.00	02.01.016.00	02.01.016.00	02.01.016.00
	Quantity	1	1	1	1	1
35	Transformer, Step Down	---	---	R02.17.003.00	R02.17.002.00	02.17.009.00
36	Terminal Block	R02.15.046.00	R02.15.046.00	---	---	---
37	Indicator Light, Red	02.19.151.00	02.19.151.00	02.19.151.00	02.19.151.00	02.19.151.00
38A	Power Fuse Block	---	---	---	---	---
	Quantity	---	---	---	---	---
38B	Power Fuse Block	---	---	---	---	---
	Quantity	---	---	---	---	---
38C	Power Fuse Block	---	---	---	---	---
	Quantity	---	---	---	---	---
38D	Power Fuse Block	---	---	---	---	---
	Quantity	---	---	---	---	---
38E	Power Fuse Block	---	---	---	---	---
	Quantity	---	---	---	---	---
39A	Power Fuse (2 Pack)	---	---	---	---	---
	Quantity	---	---	---	---	---
39B	Power Fuse (2 Pack)	---	---	---	---	---
	Quantity	---	---	---	---	---
39C	Power Fuse (2 Pack)	---	---	---	---	---
	Quantity	---	---	---	---	---
39D	Power Fuse (2 Pack)	---	---	---	---	---
	Quantity	---	---	---	---	---
40	Control Fuse Block	02.03.004.00	02.03.004.00	---	---	02.03.016.00
41	Control Fuse (2 Pack)	R02.03.001.02	R02.03.001.02	R02.03.005.02	R02.03.005A.02	R02.03.021.02
	Electrical Diagram	HC1-391	HC1-391	HC1-396	HC1-396	HC1-396

Shaded area reflects **export models only**.

**PARTS SPECIFIC TO MODEL S-12**

ITEM	DESCRIPTION	208V	208V	240V	240V	480V	480V	208V	208V
		Single Phase	Three Phase	Single Phase	Three Phase	Single Phase	Three Phase	Single Phase	Three Phase
32	Tank with Gaskets	R01.02.007S.00	R01.02.007S.00	R01.02.007S.00	R01.02.007S.00	---	R01.02.007S.00	R01.02.007S.00	R01.02.007S.00
33	Heating Element	R02.04.400.00	R02.04.400.00	R02.04.401.00	R02.04.401.00	---	R02.04.404.00	R02.04.400.00	R02.04.400.00
	Quantity	3	3	3	3	---	3	3	3
34	Contactora	02.01.017.00	02.01.015.00	02.01.017.00	02.01.015.00	---	02.01.015.00	02.01.018.00	02.01.018.00
	Quantity	1	1	1	1	---	1	1	1
35	Transformer, Step Down	02.17.004.00	02.17.004.00	02.17.004.00	02.17.004.00	---	02.17.005.00	---	---
36	Terminal Block	---	R02.15.046.00	---	R02.15.046.00	---	---	R02.15.046.00	R02.15.046.00
37	Indicator Light, Red	02.19.154.00	02.19.154.00	02.19.154.00	02.19.154.00	---	02.19.154.00	02.19.151.00	02.19.151.00
38A	Power Fuse Block	02.41.005.00	---	02.41.005.00	---	---	---	---	---
	Quantity	1	---	1	---	---	---	---	---
38B	Power Fuse Block	---	---	---	---	---	---	---	---
	Quantity	---	---	---	---	---	---	---	---
38C	Power Fuse Block	---	---	---	---	---	---	---	---
	Quantity	---	---	---	---	---	---	---	---
38D	Power Fuse Block	---	---	---	---	---	---	---	---
	Quantity	---	---	---	---	---	---	---	---
38E	Power Fuse Block	---	---	---	---	---	---	---	---
	Quantity	---	---	---	---	---	---	---	---
39A	Power Fuse (2 Pack) (35 Amp)	R02.03.030.02	---	R02.03.030.02	---	---	---	---	---
	Quantity	1	---	1	---	---	---	---	---
39B	Power Fuse (2 Pack) (50 Amp)	R02.03.032.02	---	R02.03.032.02	---	---	---	---	---
	Quantity	1	---	1	---	---	---	---	---
39C	Power Fuse (2 Pack)	---	---	---	---	---	---	---	---
	Quantity	---	---	---	---	---	---	---	---
39D	Power Fuse (2 Pack)	---	---	---	---	---	---	---	---
	Quantity	---	---	---	---	---	---	---	---
40	Control Fuse Block	02.03.022.00	02.03.022.00	02.03.022.00	02.03.022.00	---	02.03.023.00	02.03.004.00	02.03.004.00
41	Control Fuse (2 Pack)	R02.03.014.02	R02.03.014.02	R02.03.014.02	R02.03.014.02	---	R02.03.013.02	R02.03.001.02	R02.03.001.02
	Electrical Diagram	HS1-2073	HC1-2465	HS1-2073	HC1-2465	---	HC1-2465	HC1-390	HC1-390

Shaded area reflects **export models only**.

**PARTS SPECIFIC TO MODEL S-12**

ITEM	DESCRIPTION	240V	240V	380V	415V	600V
		Single Phase	Three Phase	Three Phase	Three Phase	Three Phase
32	Tank with Gaskets	R01.02.007S.00	R01.02.007S.00	R01.02.007S.00	R01.02.007S.00	R01.02.007S.00
33	Heating Element	R02.04.401.00	R02.04.401.00	R02.04.501.00	R02.04.401.00	R02.04.402.00
	Quantity	3	3	3	3	3
34	Contactator	02.01.018.00	02.01.018.00	02.01.016.00	02.01.016.00	02.01.016.00
	Quantity	1	1	1	1	1
35	Transformer, Step Down	---	---	R02.17.003.00	R02.17.002.00	02.17.009.00
36	Terminal Block	R02.15.046.00	R02.15.046.00	---	---	---
37	Indicator Light, Red	02.19.151.00	02.19.151.00	02.19.151.00	02.19.151.00	02.19.151.00
38A	Power Fuse Block	---	---	---	---	---
	Quantity	---	---	---	---	---
38B	Power Fuse Block	---	---	---	---	---
	Quantity	---	---	---	---	---
38C	Power Fuse Block	---	---	---	---	---
	Quantity	---	---	---	---	---
38D	Power Fuse Block	---	---	---	---	---
	Quantity	---	---	---	---	---
38E	Power Fuse Block	---	---	---	---	---
	Quantity	---	---	---	---	---
39A	Power Fuse (2 Pack)	---	---	---	---	---
	Quantity	---	---	---	---	---
39B	Power Fuse (2 Pack)	---	---	---	---	---
	Quantity	---	---	---	---	---
39C	Power Fuse (2 Pack)	---	---	---	---	---
	Quantity	---	---	---	---	---
39D	Power Fuse (2 Pack)	---	---	---	---	---
	Quantity	---	---	---	---	---
40	Control Fuse Block	02.03.004.00	02.03.004.00	---	---	02.03.016.00
41	Control Fuse (2 Pack)	R02.03.001.02	R02.03.001.02	R02.03.005.02	R02.03.005A.02	R02.03.021.02
	Electrical Diagram	HC1-390	HC1-390	HC1-396	HC1-396	HC1-396

Shaded area reflects **export models only**.

**PARTS SPECIFIC TO MODEL S-13**

ITEM	DESCRIPTION	208V	208V	240V	240V	480V	480V	208V	208V
		Single Phase	Three Phase	Single Phase	Three Phase	Single Phase	Three Phase	Single Phase	Three Phase
32	Tank with Gaskets	R01.02.007S.00	R01.02.007S.00	R01.02.007S.00	R01.02.007S.00	---	R01.02.007S.00	R01.02.007S.00	R01.02.007S.00
33	Heating Element	R02.04.450.00	R02.04.450.00	R02.04.451.00	R02.04.451.00	---	R02.04.453.00	R02.04.450.00	R02.04.450.00
	Quantity	3	3	3	3	---	3	3	3
34	Contactora	02.01.017.00	02.01.015.00	02.01.017.00	02.01.015.00	---	02.01.015.00	02.01.018.00	02.01.018.00
	Quantity	1	1	1	1	---	1	1	1
35	Transformer, Step Down	02.17.004.00	02.17.004.00	02.17.004.00	02.17.004.00	---	02.17.005.00	---	---
36	Terminal Block	---	R02.15.046.00	---	R02.15.046.00	---	---	R02.15.046.00	R02.15.046.00
37	Indicator Light, Red	02.19.154.00	02.19.154.00	02.19.154.00	02.19.154.00	---	02.19.154.00	02.19.151.00	02.19.151.00
38A	Power Fuse Block	02.41.005.00	---	02.41.005.00	---	---	---	---	---
	Quantity	1	---	1	---	---	---	---	---
38B	Power Fuse Block	---	---	---	---	---	---	---	---
	Quantity	---	---	---	---	---	---	---	---
38C	Power Fuse Block	---	---	---	---	---	---	---	---
	Quantity	---	---	---	---	---	---	---	---
38D	Power Fuse Block	---	---	---	---	---	---	---	---
	Quantity	---	---	---	---	---	---	---	---
38E	Power Fuse Block	---	---	---	---	---	---	---	---
	Quantity	---	---	---	---	---	---	---	---
39A	Power Fuse (2 Pack) (35 Amp)	R02.03.030.02	---	R02.03.030.02	---	---	---	---	---
	Quantity	1	---	1	---	---	---	---	---
39B	Power Fuse (2 Pack) (50 Amp)	R02.03.032.02	---	R02.03.032.02	---	---	---	---	---
	Quantity	1	---	1	---	---	---	---	---
39C	Power Fuse (2 Pack)	---	---	---	---	---	---	---	---
	Quantity	---	---	---	---	---	---	---	---
39D	Power Fuse (2 Pack)	---	---	---	---	---	---	---	---
	Quantity	---	---	---	---	---	---	---	---
40	Control Fuse Block	02.03.022.00	02.03.022.00	02.03.022.00	02.03.022.00	---	02.03.023.00	02.03.004.00	02.03.004.00
41	Control Fuse (2 Pack)	R02.03.014.02	R02.03.014.02	R02.03.014.02	R02.03.014.02	---	R02.03.013.02	R02.03.001.02	R02.03.001.02
	Electrical Diagram	HS1-2073	HC1-2465	HS1-2073	HC1-2465	---	HC1-2465	HC1-390	HC1-390

Shaded area reflects **export models only**.

**PARTS SPECIFIC TO MODEL S-13**

ITEM	DESCRIPTION	240V	240V	380V	415V	600V
		Single Phase	Three Phase	Three Phase	Three Phase	Three Phase
32	Tank with Gaskets	R01.02.007S.00	R01.02.007S.00	---	R01.02.007S.00	R01.02.007S.00
33	Heating Element	R02.04.451.00	R02.04.451.00	---	R02.04.451.00	R02.04.353.00
	Quantity	3	3	---	3	3
34	Contactors	02.01.018.00	02.01.018.00	---	02.01.016.00	02.01.016.00
	Quantity	1	1	---	1	1
35	Transformer, Step Down	---	---	---	R02.17.002.00	02.17.009.00
36	Terminal Block	R02.15.046.00	R02.15.046.00	---	---	---
37	Indicator Light, Red	02.19.151.00	02.19.151.00	---	02.19.151.00	02.19.151.00
38A	Power Fuse Block	---	---	---	---	---
	Quantity	---	---	---	---	---
38B	Power Fuse Block	---	---	---	---	---
	Quantity	---	---	---	---	---
38C	Power Fuse Block	---	---	---	---	---
	Quantity	---	---	---	---	---
38D	Power Fuse Block	---	---	---	---	---
	Quantity	---	---	---	---	---
38E	Power Fuse Block	---	---	---	---	---
	Quantity	---	---	---	---	---
39A	Power Fuse (2 Pack)	---	---	---	---	---
	Quantity	---	---	---	---	---
39B	Power Fuse (2 Pack)	---	---	---	---	---
	Quantity	---	---	---	---	---
39C	Power Fuse (2 Pack)	---	---	---	---	---
	Quantity	---	---	---	---	---
39D	Power Fuse (2 Pack)	---	---	---	---	---
	Quantity	---	---	---	---	---
40	Control Fuse Block	02.03.004.00	02.03.004.00	---	---	02.03.016.00
41	Control Fuse (2 Pack)	R02.03.001.02	R02.03.001.02	---	R02.03.001.02	R02.03.021.02
	Electrical Diagram	HC1-390	HC1-390	---	HC1-396	HC1-396

Shaded area reflects **export models only**.

**PARTS SPECIFIC TO MODEL S-15**

ITEM	DESCRIPTION	208V	208V	240V	240V	480V	480V	208V	208V
		Single Phase	Three Phase	Single Phase	Three Phase	Single Phase	Three Phase	Single Phase	Three Phase
32	Tank with Gaskets	R01.02.007S.00	R01.02.007S.00	R01.02.007S.00	R01.02.007S.00	---	R01.02.007S.00	R01.02.007S.00	R01.02.007S.00
33	Heating Element	R02.04.500.00	R02.04.500.00	R02.04.501.00	R02.04.501.00	---	R02.04.502.00	R02.04.500.00	R02.04.500.00
	Quantity	3	3	3	3	---	3	3	3
34	Contactora	02.01.017.00	02.01.015.00	02.01.017.00	02.01.015.00	---	02.01.015.00	02.01.018.00	02.01.018.00
	Quantity	1	1	1	1	---	1	1	1
35	Transformer, Step Down	02.17.004.00	02.17.004.00	02.17.004.00	02.17.004.00	---	02.17.005.00	---	---
36	Terminal Block	---	R02.15.046.00	---	R02.15.046.00	---	---	R02.15.046.00	R02.15.046.00
37	Indicator Light, Red	02.19.154.00	02.19.154.00	02.19.154.00	02.19.154.00	---	02.19.154.00	02.19.151.00	02.19.151.00
38A	Power Fuse Block	02.41.005.00	---	02.41.005.00	---	---	---	---	---
	Quantity	1	---	1	---	---	---	---	---
38B	Power Fuse Block	---	---	---	---	---	---	---	---
	Quantity	---	---	---	---	---	---	---	---
38C	Power Fuse Block	---	---	---	---	---	---	---	---
	Quantity	---	---	---	---	---	---	---	---
38D	Power Fuse Block	---	---	---	---	---	---	---	---
	Quantity	---	---	---	---	---	---	---	---
38E	Power Fuse Block	---	---	---	---	---	---	---	---
	Quantity	---	---	---	---	---	---	---	---
39A	Power Fuse (2 Pack) (35 Amp)	R02.03.030.02	---	R02.03.030.02	---	---	---	---	---
	Quantity	1	---	1	---	---	---	---	---
39B	Power Fuse (2 Pack) (60 Amp)	R02.03.033.02	---	R02.03.033.02	---	---	---	---	---
	Quantity	1	---	1	---	---	---	---	---
39C	Power Fuse (2 Pack)	---	---	---	---	---	---	---	---
	Quantity	---	---	---	---	---	---	---	---
39D	Power Fuse (2 Pack)	---	---	---	---	---	---	---	---
	Quantity	---	---	---	---	---	---	---	---
40	Control Fuse Block	02.03.022.00	02.03.022.00	02.03.022.00	02.03.022.00	---	02.03.023.00	02.03.004.00	02.03.004.00
41	Control Fuse (2 Pack)	R02.03.014.02	R02.03.014.02	R02.03.014.02	R02.03.014.02	---	R02.03.013.02	R02.03.001.02	R02.03.001.02
	Electrical Diagram	HS1-2073	HC1-2465	HS1-2073	HC1-2465	---	HC1-2465	HC1-390	HC1-390

Shaded area reflects **export models only**.

**PARTS SPECIFIC TO MODEL S-15**

ITEM	DESCRIPTION	240V	240V	380V	415V	600V
		Single Phase	Three Phase	Three Phase	Three Phase	Three Phase
32	Tank with Gaskets	R01.02.007S.00	R01.02.007S.00	R01.02.007S.00	R01.02.007S.00	R01.02.007S.00
33	Heating Element	R02.04.501.00	R02.04.501.00	R02.04.603.00	R02.04.501.00	R02.04.510.00
	Quantity	3	3	3	3	3
34	Contactors	02.01.018.00	02.01.018.00	02.01.016.00	02.01.016.00	02.01.016.00
	Quantity	1	1	1	1	1
35	Transformer, Step Down	---	---	R02.17.003.00	R02.17.002.00	02.17.009.00
36	Terminal Block	R02.15.046.00	R02.15.046.00	---	---	---
37	Indicator Light, Red	02.19.151.00	02.19.151.00	02.19.151.00	02.19.151.00	02.19.151.00
38A	Power Fuse Block	---	---	---	---	---
	Quantity	---	---	---	---	---
38B	Power Fuse Block	---	---	---	---	---
	Quantity	---	---	---	---	---
38C	Power Fuse Block	---	---	---	---	---
	Quantity	---	---	---	---	---
38D	Power Fuse Block	---	---	---	---	---
	Quantity	---	---	---	---	---
38E	Power Fuse Block	---	---	---	---	---
	Quantity	---	---	---	---	---
39A	Power Fuse (2 Pack)	---	---	---	---	---
	Quantity	---	---	---	---	---
39B	Power Fuse (2 Pack)	---	---	---	---	---
	Quantity	---	---	---	---	---
39C	Power Fuse (2 Pack)	---	---	---	---	---
	Quantity	---	---	---	---	---
39D	Power Fuse (2 Pack)	---	---	---	---	---
	Quantity	---	---	---	---	---
40	Control Fuse Block	02.03.004.00	02.03.004.00	---	---	02.03.016.00
41	Control Fuse (2 Pack)	R02.03.001.02	R02.03.001.02	R02.03.005.02	R02.03.005A.02	R02.03.021.02
	Electrical Diagram	HC1-390	HC1-390	HC1-396	HC1-396	HC1-396

Shaded area reflects export models only.

**PARTS SPECIFIC TO MODEL S-17**

ITEM	DESCRIPTION	208V	208V	240V	240V	480V	480V	208V	208V
		Single Phase	Three Phase	Single Phase	Three Phase	Single Phase	Three Phase	Single Phase	Three Phase
32	Tank with Gaskets	---	R01.02.007S.00	---	---	---	---	---	R01.02.007S.00
33	Heating Element	---	R02.04.600.00	---	---	---	---	---	R02.04.600.00
	Quantity	---	3	---	---	---	---	---	3
34	Contactora	---	02.01.015.00	---	---	---	---	---	02.01.018.00
	Quantity	---	1	---	---	---	---	---	1
35	Transformer, Step Down	---	02.17.004.00	---	---	---	---	---	---
36	Terminal Block	---	R02.15.046.00	---	---	---	---	---	R02.15.046.00
37	Indicator Light, Red	---	02.19.154.00	---	---	---	---	---	02.19.151.00
38A	Power Fuse Block	---	---	---	---	---	---	---	---
	Quantity	---	---	---	---	---	---	---	---
38B	Power Fuse Block	---	---	---	---	---	---	---	---
	Quantity	---	---	---	---	---	---	---	---
38C	Power Fuse Block	---	---	---	---	---	---	---	---
	Quantity	---	---	---	---	---	---	---	---
38D	Power Fuse Block	---	---	---	---	---	---	---	---
	Quantity	---	---	---	---	---	---	---	---
38E	Power Fuse Block	---	---	---	---	---	---	---	---
	Quantity	---	---	---	---	---	---	---	---
39A	Power Fuse (2 Pack)	---	---	---	---	---	---	---	---
	Quantity	---	---	---	---	---	---	---	---
39B	Power Fuse (2 Pack)	---	---	---	---	---	---	---	---
	Quantity	---	---	---	---	---	---	---	---
39C	Power Fuse (2 Pack)	---	---	---	---	---	---	---	---
	Quantity	---	---	---	---	---	---	---	---
39D	Power Fuse (2 Pack)	---	---	---	---	---	---	---	---
	Quantity	---	---	---	---	---	---	---	---
40	Control Fuse Block	---	02.03.022.00	---	---	---	---	---	02.03.004.00
41	Control Fuse (2 Pack)	---	R02.03.014.02	---	---	---	---	---	R02.03.001.02
	Electrical Diagram	---	HC1-2465	---	---	---	---	---	HC1-390

Shaded area reflects **export models only**.

**PARTS SPECIFIC TO MODEL S-17**

ITEM	DESCRIPTION	240V	240V	380V	415V	600V
		Single Phase	Three Phase	Three Phase	Three Phase	Three Phase
32	Tank with Gaskets	---	---	---	---	---
33	Heating Element	---	---	---	---	---
	Quantity	---	---	---	---	---
34	Contactora	---	---	---	---	---
	Quantity	---	---	---	---	---
35	Transformer, Step Down	---	---	---	---	---
36	Terminal Block	---	---	---	---	---
37	Indicator Light, Red	---	---	---	---	---
38A	Power Fuse Block	---	---	---	---	---
	Quantity	---	---	---	---	---
38B	Power Fuse Block	---	---	---	---	---
	Quantity	---	---	---	---	---
38C	Power Fuse Block	---	---	---	---	---
	Quantity	---	---	---	---	---
38D	Power Fuse Block	---	---	---	---	---
	Quantity	---	---	---	---	---
38E	Power Fuse Block	---	---	---	---	---
	Quantity	---	---	---	---	---
39A	Power Fuse (2 Pack)	---	---	---	---	---
	Quantity	---	---	---	---	---
39B	Power Fuse (2 Pack)	---	---	---	---	---
	Quantity	---	---	---	---	---
39C	Power Fuse (2 Pack)	---	---	---	---	---
	Quantity	---	---	---	---	---
39D	Power Fuse (2 Pack)	---	---	---	---	---
	Quantity	---	---	---	---	---
40	Control Fuse Block	---	---	---	---	---
41	Control Fuse (2 Pack)	---	---	---	---	---
	Electrical Diagram	---	---	---	---	---

Shaded area reflects **export models only**.

**PARTS SPECIFIC TO MODEL S-18**

ITEM	DESCRIPTION	208V	208V	240V	240V	480V	480V	208V	208V
		Single Phase	Three Phase	Single Phase	Three Phase	Single Phase	Three Phase	Single Phase	Three Phase
32	Tank with Gaskets	R01.02.007S.00	---	R01.02.007S.00	R01.02.007S.00	---	R01.02.007S.00	R01.02.007S.00	---
33	Heating Element	R02.04.610.00	---	R02.04.611.00	R02.04.611.00	---	R02.04.613.00	R02.04.610.00	---
	Quantity	3	---	3	3	---	3	3	---
34	Contactora	02.01.015.00	---	02.01.015.00	02.01.015.00	---	02.01.015.00	02.01.018.00	---
	Quantity	2	---	2	1	---	1	1	---
35	Transformer, Step Down	02.17.004.00	---	02.17.004.00	02.17.004.00	---	02.17.005.00	---	---
36	Terminal Block	---	---	---	R02.15.046.00	---	---	R02.15.046.00	---
37	Indicator Light, Red	02.19.154.00	---	02.19.154.00	02.19.154.00	---	02.19.154.00	02.19.151.00	---
38A	Power Fuse Block	02.41.010.00	---	02.41.010.00	---	---	---	---	---
	Quantity	2	---	2	---	---	---	---	---
38B	Power Fuse Block	---	---	---	---	---	---	---	---
	Quantity	---	---	---	---	---	---	---	---
38C	Power Fuse Block	---	---	---	---	---	---	---	---
	Quantity	---	---	---	---	---	---	---	---
38D	Power Fuse Block	---	---	---	---	---	---	---	---
	Quantity	---	---	---	---	---	---	---	---
38E	Power Fuse Block	---	---	---	---	---	---	---	---
	Quantity	---	---	---	---	---	---	---	---
39A	Power Fuse (2 Pack) (40 Amp)	R02.03.031.02	---	R02.03.031.02	---	---	---	---	---
	Quantity	3	---	3	---	---	---	---	---
39B	Power Fuse (2 Pack)	---	---	---	---	---	---	---	---
	Quantity	---	---	---	---	---	---	---	---
39C	Power Fuse (2 Pack)	---	---	---	---	---	---	---	---
	Quantity	---	---	---	---	---	---	---	---
39D	Power Fuse (2 Pack)	---	---	---	---	---	---	---	---
	Quantity	---	---	---	---	---	---	---	---
40	Control Fuse Block	02.03.022.00	---	02.03.022.00	02.03.022.00	---	02.03.023.00	02.03.004.00	---
41	Control Fuse (2 Pack)	R02.03.014.02	---	R02.03.014.02	R02.03.014.02	---	R02.03.013.02	R02.03.001.02	---
	Electrical Diagram	HC1-2469	---	HC1-2469	HC1-2465	---	HC1-2465	HC1-390	---

Shaded area reflects **export models only**.

**PARTS SPECIFIC TO MODEL S-18**

ITEM	DESCRIPTION	240V	240V	380V	415V	600V
		Single Phase	Three Phase	Three Phase	Three Phase	Three Phase
32	Tank with Gaskets	R01.02.007S.00	R01.02.007S.00	R01.02.007S.00	R01.02.007S.00	R01.02.007S.00
33	Heating Element	R02.04.611.00	R02.04.611.00	R02.04.601.00	R02.04.603.00	R02.04.604.00
	Quantity	3	3	3	3	3
34	Contactora	02.01.018.00	02.01.018.00	02.01.016.00	02.01.016.00	02.01.016.00
	Quantity	1	1	1	1	1
35	Transformer, Step Down	---	---	R02.17.003.00	R02.17.002.00	02.17.009.00
36	Terminal Block	R02.15.046.00	R02.15.046.00	---	---	---
37	Indicator Light, Red	02.19.151.00	02.19.151.00	02.19.151.00	02.19.151.00	02.19.151.00
38A	Power Fuse Block	---	---	---	---	---
	Quantity	---	---	---	---	---
38B	Power Fuse Block	---	---	---	---	---
	Quantity	---	---	---	---	---
38C	Power Fuse Block	---	---	---	---	---
	Quantity	---	---	---	---	---
38D	Power Fuse Block	---	---	---	---	---
	Quantity	---	---	---	---	---
38E	Power Fuse Block	---	---	---	---	---
	Quantity	---	---	---	---	---
39A	Power Fuse (2 Pack)	---	---	---	---	---
	Quantity	---	---	---	---	---
39B	Power Fuse (2 Pack)	---	---	---	---	---
	Quantity	---	---	---	---	---
39C	Power Fuse (2 Pack)	---	---	---	---	---
	Quantity	---	---	---	---	---
39D	Power Fuse (2 Pack)	---	---	---	---	---
	Quantity	---	---	---	---	---
40	Control Fuse Block	02.03.004.00	02.03.004.00	---	---	02.03.016.00
41	Control Fuse (2 Pack)	R02.03.001.02	R02.03.001.02	R02.03.005.02	R02.03.005A.02	R02.03.021.02
	Electrical Diagram	HC1-390	HC1-390	HC1-396	HC1-396	HC1-396

Shaded area reflects **export models only**.

**PARTS SPECIFIC TO MODEL S-24**

ITEM	DESCRIPTION	208V	208V	240V	240V	480V	480V	208V	208V
		Single Phase	Three Phase	Single Phase	Three Phase	Single Phase	Three Phase	Single Phase	Three Phase
32	Tank with Gaskets	R01.02.008S.00	R01.02.008S.00	R01.02.008S.00	R01.02.008S.00	---	R01.02.008S.00	R01.02.008S.00	R01.02.008S.00
33	Heating Element	R02.04.400.00	R02.04.400.00	R02.04.401.00	R02.04.401.00	---	R02.04.404.00	R02.04.400.00	R02.04.400.00
	Quantity	6	6	6	6	---	6	6	6
34	Contactors	02.01.017.00	02.01.015.00	02.01.017.00	02.01.015.00	---	02.01.015.00	02.01.018.00	02.01.016.00
	Quantity	2	2	2	2	---	2	2	2
35	Transformer, Step Down	02.17.004.00	02.17.004.00	02.17.004.00	02.17.004.00	---	02.17.005.00	---	---
36	Terminal Block	---	---	---	---	---	R02.15.046.00	02.15.007.00	02.15.021.00
37	Indicator Light, Red	02.19.154.00	02.19.154.00	02.19.154.00	02.19.154.00	---	02.19.154.00	02.19.151.00	02.19.151.00
38A	Power Fuse Block	02.41.015.00	---	02.41.015.00	---	---	---	---	---
	Quantity	2	---	2	---	---	---	---	---
38B	Power Fuse Block	---	02.41.001.00	---	02.41.001.00	---	---	---	---
	Quantity	---	1	---	1	---	---	---	---
38C	Power Fuse Block	---	02.41.005.00	---	02.41.005.00	---	---	---	---
	Quantity	---	1	---	1	---	---	---	---
38D	Power Fuse Block	---	---	---	---	---	---	---	---
	Quantity	---	---	---	---	---	---	---	---
38E	Power Fuse Block	---	---	---	---	---	---	---	---
	Quantity	---	---	---	---	---	---	---	---
39A	Power Fuse (2 Pack) (40 Amp)	R02.03.030.02	---	R02.03.030.02	---	---	---	---	---
	Quantity	2	---	2	---	---	---	---	---
39B	Power Fuse (2 Pack)	R02.03.032.02	R02.03.032.02	R02.03.032.02	R02.03.032.02	---	---	---	---
	Quantity	2	3	2	3	---	---	---	---
39C	Power Fuse (2 Pack)	---	---	---	---	---	---	---	---
	Quantity	---	---	---	---	---	---	---	---
39D	Power Fuse (2 Pack)	---	---	---	---	---	---	---	---
	Quantity	---	---	---	---	---	---	---	---
40	Control Fuse Block	02.03.022.00	02.03.022.00	02.03.022.00	02.03.022.00	---	02.03.023.00	02.03.004.00	02.03.004.00
41	Control Fuse (2 Pack)	R02.03.014.02	R02.03.014.02	R02.03.014.02	R02.03.014.02	---	R02.03.013.02	R02.03.001.02	R02.03.001.02
	Electrical Diagram	HC1-2499	HC1-2501	HC1-2499	HC1-2501	---	HC1-2503	HC1-1175	HC1-1174

Shaded area reflects **export models only**.

**PARTS SPECIFIC TO MODEL S-24**

ITEM	DESCRIPTION	240V	240V	380V	415V	600V
		Single Phase	Three Phase	Three Phase	Three Phase	Three Phase
32	Tank with Gaskets	R01.02.008S.00	R01.02.008S.00	R01.02.008S.00	R01.02.008S.00	R01.02.008S.00
33	Heating Element	R02.04.401.00	R02.04.401.00	R02.04.501.00	R02.04.401.00	R02.04.402.00
	Quantity	6	6	6	6	6
34	Contactors	02.01.018.00	02.01.016.00	02.01.016.00	02.01.016.00	02.01.016.00
	Quantity	2	2	2	2	2
35	Transformer, Step Down	---	---	R02.17.003.00	R02.17.002.00	02.17.009.00
36	Terminal Block	02.15.007.00	02.15.021.00	R02.15.046.00	R02.15.046.00	R02.15.046.00
37	Indicator Light, Red	02.19.151.00	02.19.151.00	02.19.151.00	02.19.151.00	02.19.151.00
38A	Power Fuse Block	---	---	---	---	---
	Quantity	---	---	---	---	---
38B	Power Fuse Block	---	---	---	---	---
	Quantity	---	---	---	---	---
38C	Power Fuse Block	---	---	---	---	---
	Quantity	---	---	---	---	---
38D	Power Fuse Block	---	---	---	---	---
	Quantity	---	---	---	---	---
38E	Power Fuse Block	---	---	---	---	---
	Quantity	---	---	---	---	---
39A	Power Fuse (2 Pack)	---	---	---	---	---
	Quantity	---	---	---	---	---
39B	Power Fuse (2 Pack)	---	---	---	---	---
	Quantity	---	---	---	---	---
39C	Power Fuse (2 Pack)	---	---	---	---	---
	Quantity	---	---	---	---	---
39D	Power Fuse (2 Pack)	---	---	---	---	---
	Quantity	---	---	---	---	---
40	Control Fuse Block	02.03.004.00	02.03.004.00	---	---	02.03.016.00
41	Control Fuse (2 Pack)	R02.03.001.02	R02.03.001.02	R02.03.005A.02	R02.03.005A.02	R02.03.021.02
	Electrical Diagram	HC1-1175	HC1-1174	HC1-1179	HC1-1179	HC1-1179

Shaded area reflects **export models only**.

**PARTS SPECIFIC TO MODEL S-27**

ITEM	DESCRIPTION	208V	208V	240V	240V	480V	480V	208V	208V
		Single Phase	Three Phase	Single Phase	Three Phase	Single Phase	Three Phase	Single Phase	Three Phase
32	Tank with Gaskets	R01.02.008S.00	R01.02.008S.00	R01.02.008S.00	R01.02.008S.00	---	R01.02.008S.00	R01.02.008S.00	R01.02.008S.00
33	Heating Element	R02.04.450.00	R02.04.450.00	R02.04.451.00	R02.04.451.00	---	R02.04.453.00	R02.04.450.00	R02.04.450.00
	Quantity	6	6	6	6	---	6	6	6
34	Contactora	02.01.017.00	02.01.015.00	02.01.017.00	02.01.015.00	---	02.01.015.00	02.01.018.00	02.01.016.00
	Quantity	2	2	2	2	---	2	2	2
35	Transformer, Step Down	02.17.004.00	02.17.004.00	02.17.004.00	02.17.004.00	---	02.17.005.00	---	---
36	Terminal Block	---	---	---	---	---	R02.15.046.00	02.15.007.00	02.15.021.00
37	Indicator Light, Red	02.19.154.00	02.19.154.00	02.19.154.00	02.19.154.00	---	02.19.154.00	02.19.151.00	02.19.151.00
38A	Power Fuse Block	02.41.015.00	---	02.41.015.00	---	---	---	---	---
	Quantity	2	---	2	---	---	---	---	---
38B	Power Fuse Block	---	02.41.001.00	---	02.41.001.00	---	---	---	---
	Quantity	---	1	---	1	---	---	---	---
38C	Power Fuse Block	---	02.41.005.00	---	02.41.005.00	---	---	---	---
	Quantity	---	1	---	1	---	---	---	---
38D	Power Fuse Block	---	---	---	---	---	---	---	---
	Quantity	---	---	---	---	---	---	---	---
38E	Power Fuse Block	---	---	---	---	---	---	---	---
	Quantity	---	---	---	---	---	---	---	---
39A	Power Fuse (2 Pack) (35 Amp)	R02.03.030.02	---	R02.03.030.02	---	---	---	---	---
	Quantity	2	---	2	---	---	---	---	---
39B	Power Fuse (2 Pack) (50 Amp)	---	R02.03.032.02	---	R02.03.032.02	---	---	---	---
	Quantity	---	3	---	3	---	---	---	---
39C	Power Fuse (2 Pack) (60 Amp)	R02.03.033.02	---	R02.03.033.02	---	---	---	---	---
	Quantity	2	---	2	---	---	---	---	---
39D	Power Fuse (2 Pack)	---	---	---	---	---	---	---	---
	Quantity	---	---	---	---	---	---	---	---
40	Control Fuse Block	02.03.022.00	02.03.022.00	02.03.022.00	02.03.022.00	---	02.03.023.00	02.03.004.00	02.03.004.00
41	Control Fuse (2 Pack)	R02.03.014.02	R02.03.014.02	R02.03.014.02	R02.03.014.02	---	R02.03.013.02	R02.03.001.02	R02.03.001.02
	Electrical Diagram	HC1-2499	HC1-2501	HC1-2499	HC1-2501	---	HC1-2503	HC1-1175	HC1-1174

Shaded area reflects **export models only**.

**PARTS SPECIFIC TO MODEL S-27**

ITEM	DESCRIPTION	240V	240V	380V	415V	600V
		Single Phase	Three Phase	Three Phase	Three Phase	Three Phase
32	Tank with Gaskets	R01.02.008S.00	R01.02.008S.00	R01.02.008S.00	R01.02.008S.00	R01.02.008S.00
33	Heating Element	R02.04.451.00	R02.04.451.00	R02.04.607.00	R02.04.451.00	R02.04.452.00
	Quantity	6	6	6	6	6
34	Contactors	02.01.018.00	02.01.016.00	02.01.016.00	02.01.016.00	02.01.016.00
	Quantity	2	2	2	2	2
35	Transformer, Step Down	---	---	R02.17.003.00	R02.17.002.00	02.17.009.00
36	Terminal Block	02.15.007.00	02.15.021.00	R02.15.046.00	R02.15.046.00	R02.15.046.00
37	Indicator Light, Red	02.19.151.00	02.19.151.00	02.19.151.00	02.19.151.00	02.19.151.00
38A	Power Fuse Block	---	---	---	---	---
	Quantity	---	---	---	---	---
38B	Power Fuse Block	---	---	---	---	---
	Quantity	---	---	---	---	---
38C	Power Fuse Block	---	---	---	---	---
	Quantity	---	---	---	---	---
38D	Power Fuse Block	---	---	---	---	---
	Quantity	---	---	---	---	---
38E	Power Fuse Block	---	---	---	---	---
	Quantity	---	---	---	---	---
39A	Power Fuse (2 Pack)	---	---	---	---	---
	Quantity	---	---	---	---	---
39B	Power Fuse (2 Pack)	---	---	---	---	---
	Quantity	---	---	---	---	---
39C	Power Fuse (2 Pack)	---	---	---	---	---
	Quantity	---	---	---	---	---
39D	Power Fuse (2 Pack)	---	---	---	---	---
	Quantity	---	---	---	---	---
40	Control Fuse Block	02.03.004.00	02.03.004.00	---	---	02.03.016.00
41	Control Fuse (2 Pack)	R02.03.001.02	R02.03.001.02	R02.03.005A.02	R02.03.005A.02	R02.03.021.02
	Electrical Diagram	HC1-1175	HC1-1174	HC1-1179	HC1-1179	HC1-1179

Shaded area reflects **export models only**.

**PARTS SPECIFIC TO MODEL S-30**

ITEM	DESCRIPTION	208V	208V	240V	240V	480V	480V	208V	208V
		Single Phase	Three Phase	Single Phase	Three Phase	Single Phase	Three Phase	Single Phase	Three Phase
32	Tank with Gaskets	R01.02.008S.00	R01.02.008S.00	R01.02.008S.00	R01.02.008S.00	---	R01.02.008S.00	R01.02.008S.00	R01.02.008S.00
33	Heating Element	R02.04.500.00	R02.04.500.00	R02.04.501.00	R02.04.501.00	---	R02.04.502.00	R02.04.500.00	R02.04.500.00
	Quantity	6	6	6	6	---	6	6	6
34	Contactora	02.01.017.00	02.01.015.00	02.01.017.00	02.01.015.00	---	02.01.015.00	02.01.018.00	02.01.016.00
	Quantity	2	2	2	2	---	2	2	2
35	Transformer, Step Down	02.17.004.00	02.17.004.00	02.17.004.00	02.17.004.00	---	02.17.005.00	---	---
36	Terminal Block	---	---	---	---	---	R02.15.046.00	02.15.007.00	02.15.021.00
37	Indicator Light, Red	02.19.154.00	02.19.154.00	02.19.154.00	02.19.154.00	---	02.19.154.00	02.19.151.00	02.19.151.00
38A	Power Fuse Block	02.41.015.00	---	02.41.015.00	---	---	---	---	---
	Quantity	2	---	2	---	---	---	---	---
38B	Power Fuse Block	---	02.41.001.00	---	02.41.001.00	---	---	---	---
	Quantity	---	1	---	1	---	---	---	---
38C	Power Fuse Block	---	02.41.005.00	---	02.41.005.00	---	---	---	---
	Quantity	---	1	---	1	---	---	---	---
38D	Power Fuse Block	---	---	---	---	---	---	---	---
	Quantity	---	---	---	---	---	---	---	---
38E	Power Fuse Block	---	---	---	---	---	---	---	---
	Quantity	---	---	---	---	---	---	---	---
39A	Power Fuse (2 Pack) (35 Amp)	R02.03.030.02	---	R02.03.030.02	---	---	---	---	---
	Quantity	2	---	2	---	---	---	---	---
39B	Power Fuse (2 Pack) (60 Amp)	R02.03.033.02	R02.03.033.02	R02.03.033.02	R02.03.033.02	---	---	---	---
	Quantity	2	3	2	3	---	---	---	---
39C	Power Fuse (2 Pack)	---	---	---	---	---	---	---	---
	Quantity	---	---	---	---	---	---	---	---
39D	Power Fuse (2 Pack)	---	---	---	---	---	---	---	---
	Quantity	---	---	---	---	---	---	---	---
40	Control Fuse Block	02.03.022.00	02.03.022.00	02.03.022.00	02.03.022.00	---	02.03.023.00	02.03.004.00	02.03.004.00
41	Control Fuse (2 Pack)	R02.03.014.02	R02.03.014.02	R02.03.014.02	R02.03.014.02	---	R02.03.013.02	R02.03.001.02	R02.03.001.02
	Electrical Diagram	HC1-2499	HC1-2501	HC1-2499	HC1-2501	---	HC1-2503	HC1-1175	HC1-1174

Shaded area reflects **export models only**.

**PARTS SPECIFIC TO MODEL S-30**

ITEM	DESCRIPTION	240V	240V	380V	415V	600V
		Single Phase	Three Phase	Three Phase	Three Phase	Three Phase
32	Tank with Gaskets	R01.02.008S.00	R01.02.008S.00	R01.02.008S.00	R01.02.008S.00	R01.02.008S.00
33	Heating Element	R02.04.501.00	R02.04.501.00	R02.04.611.00	R02.04.501.00	R02.04.510.00
	Quantity	6	6	6	6	6
34	Contactors	02.01.018.00	02.01.016.00	02.01.016.00	02.01.016.00	02.01.016.00
	Quantity	2	2	2	2	2
35	Transformer, Step Down	---	---	R02.17.003.00	R02.17.002.00	02.17.009.00
36	Terminal Block	02.15.007.00	02.15.021.00	R02.15.046.00	R02.15.046.00	R02.15.046.00
37	Indicator Light, Red	02.19.151.00	02.19.151.00	02.19.151.00	02.19.151.00	02.19.151.00
38A	Power Fuse Block	---	---	---	---	---
	Quantity	---	---	---	---	---
38B	Power Fuse Block	---	---	---	---	---
	Quantity	---	---	---	---	---
38C	Power Fuse Block	---	---	---	---	---
	Quantity	---	---	---	---	---
38D	Power Fuse Block	---	---	---	---	---
	Quantity	---	---	---	---	---
38E	Power Fuse Block	---	---	---	---	---
	Quantity	---	---	---	---	---
39A	Power Fuse (2 Pack)	---	---	---	---	---
	Quantity	---	---	---	---	---
39B	Power Fuse (2 Pack)	---	---	---	---	---
	Quantity	---	---	---	---	---
39C	Power Fuse (2 Pack)	---	---	---	---	---
	Quantity	---	---	---	---	---
39D	Power Fuse (2 Pack)	---	---	---	---	---
	Quantity	---	---	---	---	---
40	Control Fuse Block	02.03.004.00	02.03.004.00	---	---	02.03.016.00
41	Control Fuse (2 Pack)	R02.03.001.02	R02.03.001.02	R02.03.005A.02	R02.03.005A.02	R02.03.021.02
	Electrical Diagram	HC1-1175	HC1-1174	HC1-1179	HC1-1179	HC1-1179

Shaded area reflects **export models only**.

**PARTS SPECIFIC TO MODEL S-36**

ITEM	DESCRIPTION	208V	208V	240V	240V	480V	480V	208V	208V
		Single Phase	Three Phase	Single Phase	Three Phase	Single Phase	Three Phase	Single Phase	Three Phase
32	Tank with Gaskets	R01.02.008S.00	R01.02.008S.00	R01.02.008S.00	R01.02.008S.00	---	R01.02.008S.00	R01.02.008S.00	R01.02.008S.00
33	Heating Element	R02.04.610.00	R02.04.610.00	R02.04.611.00	R02.04.611.00	---	R02.04.613.00	R02.04.610.00	R02.04.610.00
	Quantity	6	6	6	6	---	6	6	6
34	Contactora	02.01.015.00	02.01.015.00	02.01.015.00	02.01.015.00	---	02.01.015.00	02.01.018.00	02.01.016.00
	Quantity	4	4	4	2	---	2	2	2
35	Transformer, Step Down	02.17.004.00	02.17.004.00	02.17.004.00	02.17.004.00	---	02.17.005.00	---	---
36	Terminal Block	02.15.007.00	---	02.15.007.00	---	---	R02.15.046.00	02.15.007.00	02.15.021.00
37	Indicator Light, Red	02.19.154.00	02.19.154.00	02.19.154.00	02.19.154.00	---	02.19.154.00	02.19.151.00	02.19.151.00
38A	Power Fuse Block	02.41.010.00	---	02.41.010.00	---	---	---	---	---
	Quantity	4	---	4	---	---	---	---	---
38B	Power Fuse Block	---	02.41.015.00	---	---	---	---	---	---
	Quantity	---	3	---	---	---	---	---	---
38C	Power Fuse Block	---	---	---	02.41.001.00	---	---	---	---
	Quantity	---	---	---	1	---	---	---	---
38D	Power Fuse Block	---	---	---	02.41.005.00	---	---	---	---
	Quantity	---	---	---	1	---	---	---	---
38E	Power Fuse Block	---	---	---	---	---	---	---	---
	Quantity	---	---	---	---	---	---	---	---
39A	Power Fuse (2 Pack) (40 Amp)	R02.03.031.02	R02.03.031.02	R02.03.031.02	---	---	---	---	---
	Quantity	6	6	6	---	---	---	---	---
39B	Power Fuse (2 Pack) (60 Amp)	---	---	---	R02.03.033.02	---	---	---	---
	Quantity	---	---	---	3	---	---	---	---
39C	Power Fuse (2 Pack)	---	---	---	---	---	---	---	---
	Quantity	---	---	---	---	---	---	---	---
39D	Power Fuse (2 Pack)	---	---	---	---	---	---	---	---
	Quantity	---	---	---	---	---	---	---	---
40	Control Fuse Block	02.03.022.00	02.03.022.00	02.03.022.00	02.03.022.00	---	02.03.023.00	02.03.004.00	02.03.004.00
41	Control Fuse (2 Pack)	R02.03.014.02	R02.03.014.02	R02.03.014.02	R02.03.014.02	---	R02.03.013.02	R02.03.001.02	R02.03.001.02
	Electrical Diagram	HC1-2507	HC1-2505	HC1-2507	HC1-2501	---	HC1-2503	HC1-1175	HC1-1174

Shaded area reflects **export models only**.

**PARTS SPECIFIC TO MODEL S-36**

ITEM	DESCRIPTION	240V	240V	380V	415V	600V
		Single Phase	Three Phase	Three Phase	Three Phase	Three Phase
32	Tank with Gaskets	R01.02.008S.00	R01.02.008S.00	R01.02.008S.00	R01.02.008S.00	R01.02.008S.00
33	Heating Element	R02.04.611.00	R02.04.611.00	R02.04.601.00	R02.04.603.00	R02.04.612.00
	Quantity	6	6	6	6	6
34	Contactor	02.01.018.00	02.01.016.00	02.01.016.00	02.01.016.00	02.01.016.00
	Quantity	2	2	2	2	2
35	Transformer, Step Down	---	---	R02.17.003.00	R02.17.002.00	02.17.009.00
36	Terminal Block	02.15.007.00	02.15.021.00	R02.15.046.00	R02.15.046.00	R02.15.046.00
37	Indicator Light, Red	02.19.151.00	02.19.151.00	02.19.151.00	02.19.151.00	02.19.151.00
38A	Power Fuse Block	---	---	---	---	---
	Quantity	---	---	---	---	---
38B	Power Fuse Block	---	---	---	---	---
	Quantity	---	---	---	---	---
38C	Power Fuse Block	---	---	---	---	---
	Quantity	---	---	---	---	---
38D	Power Fuse Block	---	---	---	---	---
	Quantity	---	---	---	---	---
38E	Power Fuse Block	---	---	---	---	---
	Quantity	---	---	---	---	---
39A	Power Fuse (2 Pack)	---	---	---	---	---
	Quantity	---	---	---	---	---
39B	Power Fuse (2 Pack)	---	---	---	---	---
	Quantity	---	---	---	---	---
39C	Power Fuse (2 Pack)	---	---	---	---	---
	Quantity	---	---	---	---	---
39D	Power Fuse (2 Pack)	---	---	---	---	---
	Quantity	---	---	---	---	---
40	Control Fuse Block	02.03.004.00	02.03.004.00	---	---	02.03.016.00
41	Control Fuse (2 Pack)	R02.03.001.02	R02.03.001.02	R02.03.005A.02	R02.03.005A.02	R02.03.021.02
	Electrical Diagram	HC1-1175	HC1-1174	HC1-1179	HC1-1179	HC1-1179

Shaded area reflects **export models only**.

**PARTS SPECIFIC TO MODEL S-39**

ITEM	DESCRIPTION	208V	208V	240V	240V	480V	480V	208V	208V
		Single Phase	Three Phase	Single Phase	Three Phase	Single Phase	Three Phase	Single Phase	Three Phase
32	Tank with Gaskets	R01.02.008S.00	R01.02.008S.00	R01.02.008S.00	R01.02.008S.00	---	R01.02.008S.00	R01.02.008S.00	R01.02.008S.00
33	Heating Element	R02.04.650.00	R02.04.650.00	R02.04.653.00	R02.04.653.00	---	R02.04.655.00	R02.04.650.00	R02.04.650.00
	Quantity	6	6	6	6	---	6	6	6
34	Contactors	02.01.015.00	02.01.015.00	02.01.015.00	02.01.015.00	---	02.01.015.00	02.01.018.00	02.01.016.00
	Quantity	4	4	4	2	---	2	2	2
35	Transformer, Step Down	02.17.004.00	02.17.004.00	02.17.004.00	02.17.004.00	---	02.17.005.00	---	---
36	Terminal Block	02.15.007.00	---	02.15.007.00	---	---	R02.15.003.00	02.15.007.00	02.15.021.00
37	Indicator Light, Red	02.19.154.00	02.19.154.00	02.19.154.00	02.19.154.00	---	02.19.151.00	02.19.151.00	02.19.151.00
38A	Power Fuse Block	02.41.010.00	---	02.41.010.00	---	---	---	---	---
	Quantity	4	---	4	---	---	---	---	---
38B	Power Fuse Block	---	02.41.015.00	---	---	---	---	---	---
	Quantity	---	3	---	---	---	---	---	---
38C	Power Fuse Block	---	---	---	02.41.005.00	---	---	---	---
	Quantity	---	---	---	1	---	---	---	---
38D	Power Fuse Block	---	---	---	02.41.001.00	---	---	---	---
	Quantity	---	---	---	1	---	---	---	---
38E	Power Fuse Block	---	---	---	---	---	---	---	---
	Quantity	---	---	---	---	---	---	---	---
39A	Power Fuse (2 Pack) (40 Amp)	R02.03.031.02	R02.03.031.02	R02.03.031.02	---	---	---	---	---
	Quantity	6	6	6	---	---	---	---	---
39B	Power Fuse (2 Pack) (60 Amp)	---	---	---	R02.03.033.02	---	---	---	---
	Quantity	---	---	---	3	---	---	---	---
39C	Power Fuse (2 Pack)	---	---	---	---	---	---	---	---
	Quantity	---	---	---	---	---	---	---	---
39D	Power Fuse (2 Pack)	---	---	---	---	---	---	---	---
	Quantity	---	---	---	---	---	---	---	---
40	Control Fuse Block	02.03.022.00	02.03.022.00	02.03.022.00	02.03.022.00	---	02.03.023.00	02.03.004.00	02.03.004.00
41	Control Fuse (2 Pack)	R02.03.014.02	R02.03.014.02	R02.03.014.02	R02.03.014.02	---	R02.03.013.02	R02.03.001.02	R02.03.001.02
	Electrical Diagram	HC1-2507	HC1-2505	HC1-2507	HC1-2501	---	HC1-2503	HC1-1175	HC1-1174

Shaded area reflects **export models only**.

**PARTS SPECIFIC TO MODEL S-39**

ITEM	DESCRIPTION	240V	240V	380V	415V	600V
		Single Phase	Three Phase	Three Phase	Three Phase	Three Phase
32	Tank with Gaskets	R01.02.008S.00	R01.02.008S.00	R01.02.008S.00	R01.02.008S.00	R01.02.008S.00
33	Heating Element	R02.04.653.00	R02.04.653.00	R02.04.651.00	R02.04.653.00	R02.04.654.00
	Quantity	6	6	6	6	6
34	Contactors	02.01.018.00	02.01.016.00	02.01.016.00	02.01.016.00	02.01.016.00
	Quantity	2	2	2	2	2
35	Transformer, Step Down	---	---	R02.17.003.00	R02.17.002.00	02.17.009.00
36	Terminal Block	02.15.007.00	02.15.021.00	R02.15.046.00	R02.15.046.00	R02.15.046.00
37	Indicator Light, Red	02.19.151.00	02.19.151.00	02.19.151.00	02.19.151.00	02.19.151.00
38A	Power Fuse Block	---	---	---	---	---
	Quantity	---	---	---	---	---
38B	Power Fuse Block	---	---	---	---	---
	Quantity	---	---	---	---	---
38C	Power Fuse Block	---	---	---	---	---
	Quantity	---	---	---	---	---
38D	Power Fuse Block	---	---	---	---	---
	Quantity	---	---	---	---	---
38E	Power Fuse Block	---	---	---	---	---
	Quantity	---	---	---	---	---
39A	Power Fuse (2 Pack)	---	---	---	---	---
	Quantity	---	---	---	---	---
39B	Power Fuse (2 Pack)	---	---	---	---	---
	Quantity	---	---	---	---	---
39C	Power Fuse (2 Pack)	---	---	---	---	---
	Quantity	---	---	---	---	---
39D	Power Fuse (2 Pack)	---	---	---	---	---
	Quantity	---	---	---	---	---
40	Control Fuse Block	02.03.004.00	02.03.004.00	---	---	02.03.016.00
41	Control Fuse (2 Pack)	R02.03.001.02	R02.03.001.02	R02.03.005A.02	R02.03.005A.02	R02.03.021.02
	Electrical Diagram	HC1-1175	HC1-1174	HC1-1179	HC1-1179	HC1-1179

Shaded area reflects export models only.

**PARTS SPECIFIC TO MODEL S-40**

ITEM	DESCRIPTION	208V	208V	240V	240V	480V	480V	208V	208V
		Single Phase	Three Phase	Single Phase	Three Phase	Single Phase	Three Phase	Single Phase	Three Phase
32	Tank with Gaskets	---	R01.02.009S.00	---	R01.02.009S.00	---	R01.02.009S.00	---	R01.02.009S.00
33	Heating Element	---	R02.04.450.00	---	R02.04.451.00	---	R02.04.453.00	---	R02.04.450.00
	Quantity	---	9	---	9	---	9	---	9
34	Contactors	---	02.01.015.00	---	02.01.015.00	---	02.01.015.00	---	02.01.016.00
	Quantity	---	3	---	3	---	3	---	3
35	Transformer, Step Down	---	02.17.004.00	---	02.17.004.00	---	02.17.005.00	---	---
36	Terminal Block	---	---	---	---	R02.15.046.00	---	---	02.15.008.00
37	Indicator Light, Red	---	02.19.154.00	---	02.19.154.00	---	02.19.154.00	---	02.19.151.00
38A	Power Fuse Block	---	02.41.010.00	---	02.41.010.00	---	---	---	---
	Quantity	---	3	---	3	---	---	---	---
38B	Power Fuse Block	---	---	---	---	---	02.41.030.00	---	---
	Quantity	---	---	---	---	---	2	---	---
38C	Power Fuse Block	---	---	---	---	---	---	---	---
	Quantity	---	---	---	---	---	---	---	---
38D	Power Fuse Block	---	---	---	---	---	---	---	---
	Quantity	---	---	---	---	---	---	---	---
38E	Power Fuse Block	---	---	---	---	---	---	---	---
	Quantity	---	---	---	---	---	---	---	---
39A	Power Fuse (2 Pack) (50 Amp)	---	R02.03.032.02	---	R02.03.032.02	---	---	---	---
	Quantity	---	5	---	5	---	---	---	---
39B	Power Fuse (2 Pack) (35 Amp)	---	---	---	---	---	R02.03.010.02	---	---
	Quantity	---	---	---	---	---	2	---	---
39C	Power Fuse (2 Pack) (60 Amp)	---	---	---	---	---	R02.03.015.02	---	---
	Quantity	---	---	---	---	---	2	---	---
39D	Power Fuse (2 Pack)	---	---	---	---	---	---	---	---
	Quantity	---	---	---	---	---	---	---	---
40	Control Fuse Block	---	02.03.022.00	---	02.03.022.00	---	02.03.023.00	---	02.03.004.00
41	Control Fuse (2 Pack)	---	R02.03.014.02	---	R02.03.014.02	---	R02.03.013.02	---	R02.03.001.02
	Electrical Diagram	---	HC1-2509	---	HC1-2509	---	HC1-2513	---	HC1-1177

Shaded area reflects **export models only**.

**PARTS SPECIFIC TO MODEL S-40**

ITEM	DESCRIPTION	240V	240V	380V	415V	600V
		Single Phase	Three Phase	Three Phase	Three Phase	Three Phase
32	Tank with Gaskets	---	R01.02.009S.00	R01.02.009S.00	R01.02.009S.00	R01.02.009S.00
33	Heating Element	---	R02.04.451.00	R02.04.501.00	R02.04.451.00	R02.04.452.00
	Quantity	---	9	9	9	9
34	Contactor	---	02.01.016.00	02.01.016.00	02.01.016.00	02.01.016.00
	Quantity	---	3	3	3	3
35	Transformer, Step Down	---	---	R02.17.003.00	R02.17.002.00	02.17.009.00
36	Terminal Block	---	02.15.008.00	02.15.021.00	02.15.021.00	02.15.021.00
37	Indicator Light, Red	---	02.19.151.00	02.19.151.00	02.19.151.00	02.19.151.00
38A	Power Fuse Block	---	---	---	---	---
	Quantity	---	---	---	---	---
38B	Power Fuse Block	---	---	---	---	---
	Quantity	---	---	---	---	---
38C	Power Fuse Block	---	---	---	---	---
	Quantity	---	---	---	---	---
38D	Power Fuse Block	---	---	---	---	---
	Quantity	---	---	---	---	---
38E	Power Fuse Block	---	---	---	---	---
	Quantity	---	---	---	---	---
39A	Power Fuse (2 Pack)	---	---	---	---	---
	Quantity	---	---	---	---	---
39B	Power Fuse (2 Pack)	---	---	---	---	---
	Quantity	---	---	---	---	---
39C	Power Fuse (2 Pack)	---	---	---	---	---
	Quantity	---	---	---	---	---
39D	Power Fuse (2 Pack)	---	---	---	---	---
	Quantity	---	---	---	---	---
40	Control Fuse Block	---	02.03.004.00	---	---	02.03.016.00
41	Control Fuse (2 Pack)	---	R02.03.001.02	R02.03.005A.02	R02.03.005A.02	R02.03.021.02
	Electrical Diagram	---	HC1-1177	HC1-1180	HC1-1180	HC1-1180

Shaded area reflects **export models only**.

**PARTS SPECIFIC TO MODEL S-45**

ITEM	DESCRIPTION	208V	208V	240V	240V	480V	480V	208V	208V
		Single Phase	Three Phase	Single Phase	Three Phase	Single Phase	Three Phase	Single Phase	Three Phase
32	Tank with Gaskets	---	R01.02.009S.00	R01.02.008S.00	R01.02.009S.00	---	R01.02.009S.00	---	R01.02.009S.00
33	Heating Element	---	R02.04.500.00	R02.04.701.00	R02.04.501.00	---	R02.04.502.00	---	R02.04.500.00
	Quantity	---	9	6	9	---	9	---	9
34	Contactors	---	02.01.015.00	02.01.015.00	02.01.015.00	---	02.01.015.00	---	02.01.016.00
	Quantity	---	3	4	3	---	3	---	3
35	Transformer, Step Down	---	02.17.004.00	02.17.004.00	02.17.004.00	---	02.17.005.00	---	---
36	Terminal Block	---	---	02.15.007.00	---	---	02.15.021.00	---	02.15.008.00
37	Indicator Light, Red	---	02.19.154.00	02.19.154.00	02.19.154.00	---	02.19.154.00	---	02.19.151.00
38A	Power Fuse Block	---	02.41.010.00	02.41.010.00	02.41.010.00	---	---	---	---
	Quantity	---	3	4	3	---	---	---	---
38B	Power Fuse Block	---	---	---	---	---	02.41.030.00	---	---
	Quantity	---	---	---	---	---	2	---	---
38C	Power Fuse Block	---	---	---	---	---	---	---	---
	Quantity	---	---	---	---	---	---	---	---
38D	Power Fuse Block	---	---	---	---	---	---	---	---
	Quantity	---	---	---	---	---	---	---	---
38E	Power Fuse Block	---	---	---	---	---	---	---	---
	Quantity	---	---	---	---	---	---	---	---
39A	Power Fuse (2 Pack) (40 Amp)	---	---	R02.03.031.02	---	---	---	---	---
	Quantity	---	---	6	---	---	---	---	---
39B	Power Fuse (2 Pack) (60 Amp)	---	R02.03.033.02	---	R02.03.033.02	---	---	---	---
	Quantity	---	5	---	5	---	---	---	---
39C	Power Fuse (2 Pack) (35 Amp)	---	---	---	---	---	R02.03.010.02	---	---
	Quantity	---	---	---	---	---	2	---	---
39D	Power Fuse (2 Pack) (60 Amp)	---	---	---	---	---	R02.03.015.02	---	---
	Quantity	---	---	---	---	---	2	---	---
40	Control Fuse Block	---	02.03.022.00	02.03.022.00	02.03.022.00	---	02.03.023.00	---	02.03.004.00
41	Control Fuse (2 Pack)	---	R02.03.014.02	R02.03.014.02	R02.03.014.02	---	R02.03.013.02	---	R02.03.001.02
	Electrical Diagram	---	HC1-2509	HC1-2511	HC1-2509	---	HC1-2513	---	HC1-1177

Shaded area reflects **export models only**.

<b>PARTS SPECIFIC TO MODEL S-45</b>						
<b>ITEM</b>	<b>DESCRIPTION</b>	<b>240V</b>	<b>240V</b>	<b>380V</b>	<b>415V</b>	<b>600V</b>
		<b>Single Phase</b>	<b>Three Phase</b>	<b>Three Phase</b>	<b>Three Phase</b>	<b>Three Phase</b>
32	Tank with Gaskets	---	R01.02.009S.00	R01.02.009S.00	R01.02.009S.00	R01.02.009S.00
33	Heating Element	---	R02.04.501.00	R02.04.603.00	R02.04.501.00	R02.04.510.00
	Quantity	---	9	9	9	9
34	Contactors	---	02.01.016.00	02.01.016.00	02.01.016.00	02.01.016.00
	Quantity	---	3	3	3	3
35	Transformer, Step Down	---	---	R02.17.003.00	R02.17.002.00	02.17.009.00
36	Terminal Block	---	02.15.008.00	02.15.021.00	02.15.021.00	02.15.021.00
37	Indicator Light, Red	---	02.19.151.00	02.19.151.00	02.19.151.00	02.19.151.00
38A	Power Fuse Block	---	---	---	---	---
	Quantity	---	---	---	---	---
38B	Power Fuse Block	---	---	---	---	---
	Quantity	---	---	---	---	---
38C	Power Fuse Block	---	---	---	---	---
	Quantity	---	---	---	---	---
38D	Power Fuse Block	---	---	---	---	---
	Quantity	---	---	---	---	---
38E	Power Fuse Block	---	---	---	---	---
	Quantity	---	---	---	---	---
39A	Power Fuse (2 Pack)	---	---	---	---	---
	Quantity	---	---	---	---	---
39B	Power Fuse (2 Pack)	---	---	---	---	---
	Quantity	---	---	---	---	---
39C	Power Fuse (2 Pack)	---	---	---	---	---
	Quantity	---	---	---	---	---
39D	Power Fuse (2 Pack)	---	---	---	---	---
	Quantity	---	---	---	---	---
40	Control Fuse Block	---	02.03.004.00	---	---	02.03.016.00
41	Control Fuse (2 Pack)	---	R02.03.001.02	R02.03.005A.02	R02.03.005A.02	R02.03.021.02
	Electrical Diagram	---	HC1-1177	HC1-1180	HC1-1180	HC1-1180

Shaded area reflects **export models only**.

**PARTS SPECIFIC TO MODEL S-54**

ITEM	DESCRIPTION	208V	208V	240V	240V	480V	480V	208V	208V
		Single Phase	Three Phase	Single Phase	Three Phase	Single Phase	Three Phase	Single Phase	Three Phase
32	Tank with Gaskets	---	R01.02.008S.00†	---	R01.02.009S.00	---	R01.02.009S.00	---	R01.02.009S.00
33	Heating Element	---	R02.04.710.00†	---	R02.04.611.00	---	R02.04.613.00	---	R02.04.610.00
	Quantity	---	6	---	9	---	9	---	9
34	Contactors	---	02.01.015.00	---	02.01.015.00	---	02.01.015.00	---	02.01.016.00
	Quantity	---	4	---	3	---	3	---	3
35	Transformer, Step Down	---	02.17.004.00	---	02.17.004.00	---	02.17.005.00	---	---
36	Terminal Block	---	---	---	---	---	02.15.021.00	---	02.15.008.00
37	Indicator Light, Red	---	02.19.154.00	---	02.19.154.00	---	02.19.154.00	---	02.19.151.00
38A	Power Fuse Block	---	---	---	02.41.010.00	---	---	---	---
	Quantity	---	---	---	3	---	---	---	---
38B	Power Fuse Block	---	---	---	---	---	02.41.030.00	---	---
	Quantity	---	---	---	---	---	2	---	---
38C	Power Fuse Block	---	02.41.020.00	---	---	---	---	---	---
	Quantity	---	1	---	---	---	---	---	---
38D	Power Fuse Block	---	02.41.021.00	---	---	---	---	---	---
	Quantity	---	1	---	---	---	---	---	---
38E	Power Fuse Block	---	02.41.022.00	---	---	---	---	---	---
	Quantity	---	1	---	---	---	---	---	---
39A	Power Fuse (2 Pack) (60 Amp)	---	R02.03.033.02	---	R02.03.033.02	---	---	---	---
	Quantity	---	6	---	5	---	---	---	---
39B	Power Fuse (2 Pack) (35 Amp)	---	---	---	---	---	R02.03.010.02	---	---
	Quantity	---	---	---	---	---	2	---	---
39C	Power Fuse (2 Pack) (60 Amp)	---	---	---	---	---	R02.03.015.02	---	---
	Quantity	---	---	---	---	---	2	---	---
39D	Power Fuse (2 Pack)	---	---	---	---	---	---	---	---
	Quantity	---	---	---	---	---	---	---	---
40	Control Fuse Block	---	02.03.022.00	---	02.03.022.00	---	02.03.023.00	---	02.03.004.00
41	Control Fuse (2 Pack)	---	R02.03.014.02	---	R02.03.014.02	---	R02.03.013.02	---	R02.03.001.02
	Electrical Diagram	---	HC1-2505	---	HC1-2509	---	HC1-2513	---	HC1-1177

Shaded area reflects **export models only**.

† Units manufactured before January 1980 may use a nine hole tank and nine heating elements. Consult factory with serial number for details.

**PARTS SPECIFIC TO MODEL S-54**

ITEM	DESCRIPTION	240V	240V	380V	415V	600V
		Single Phase	Three Phase	Three Phase	Three Phase	Three Phase
32	Tank with Gaskets	---	R01.02.009S.00	R01.02.009S.00	R01.02.009S.00	R01.02.009S.00
33	Heating Element	---	R02.04.611.00	R02.04.601.00	R02.04.603.00	R02.04.612.00
	Quantity	---	9	9	9	9
34	Contactors	---	02.01.016.00	02.01.016.00	02.01.016.00	02.01.016.00
	Quantity	---	3	3	3	3
35	Transformer, Step Down	---	---	R02.17.003.00	R02.17.002.00	02.17.009.00
36	Terminal Block	---	02.15.008.00	02.15.021.00	02.15.021.00	02.15.021.00
37	Indicator Light, Red	---	02.19.151.00	02.19.151.00	02.19.151.00	02.19.151.00
38A	Power Fuse Block	---	---	---	---	---
	Quantity	---	---	---	---	---
38B	Power Fuse Block	---	---	---	---	---
	Quantity	---	---	---	---	---
38C	Power Fuse Block	---	---	---	---	---
	Quantity	---	---	---	---	---
38D	Power Fuse Block	---	---	---	---	---
	Quantity	---	---	---	---	---
38E	Power Fuse Block	---	---	---	---	---
	Quantity	---	---	---	---	---
39A	Power Fuse (2 Pack)	---	---	---	---	---
	Quantity	---	---	---	---	---
39B	Power Fuse (2 Pack)	---	---	---	---	---
	Quantity	---	---	---	---	---
39C	Power Fuse (2 Pack)	---	---	---	---	---
	Quantity	---	---	---	---	---
39D	Power Fuse (2 Pack)	---	---	---	---	---
	Quantity	---	---	---	---	---
40	Control Fuse Block	---	02.03.004.00	---	---	02.03.016.00
41	Control Fuse (2 Pack)	---	R02.03.001.02	R02.03.005A.02	R02.03.005A.02	R02.03.021.02
	Electrical Diagram	---	HC1-1177	HC1-1180	HC1-1180	HC1-1180

Shaded area reflects **export models only**.

**PARTS SPECIFIC TO MODEL S-57**

ITEM	DESCRIPTION	208V	208V	240V	240V	480V	480V	208V	208V
		Single Phase	Three Phase	Single Phase	Three Phase	Single Phase	Three Phase	Single Phase	Three Phase
32	Tank with Gaskets	---	R01.02.008S.00	---	R01.02.009S.00	---	R01.02.009S.00	---	R01.02.009S.00
33	Heating Element	---	R02.04.731.00	---	R02.04.632.00	---	R02.04.634.00	---	R02.04.630.00
	Quantity	---	6	---	9	---	9	---	9
34	Contactors	---	02.01.015.00	---	02.01.015.00	---	02.01.015.00	---	02.01.016.00
	Quantity	---	4	---	3	---	3	---	3
35	Transformer, Step Down	---	02.17.004.00	---	02.17.004.00	---	02.17.005.00	---	---
36	Terminal Block	---	---	---	---	---	02.15.021.00	---	02.15.008.00
37	Indicator Light, Red	---	02.19.154.00	---	02.19.154.00	---	02.19.154.00	---	02.19.151.00
38A	Power Fuse Block	---	---	---	02.41.010.00	---	---	---	---
	Quantity	---	---	---	3	---	---	---	---
38B	Power Fuse Block	---	---	---	---	---	02.41.030.00	---	---
	Quantity	---	---	---	---	---	2	---	---
38C	Power Fuse Block	---	02.41.020.00	---	---	---	---	---	---
	Quantity	---	1	---	---	---	---	---	---
38D	Power Fuse Block	---	02.41.021.00	---	---	---	---	---	---
	Quantity	---	1	---	---	---	---	---	---
38E	Power Fuse Block	---	02.41.022.00	---	---	---	---	---	---
	Quantity	---	1	---	---	---	---	---	---
39A	Power Fuse (2 Pack) (60 Amp)	---	R02.03.033.02	---	R02.03.033.02	---	---	---	---
	Quantity	---	6	---	5	---	---	---	---
39B	Power Fuse (2 Pack) (35 Amp)	---	---	---	---	---	R02.03.010.02	---	---
	Quantity	---	---	---	---	---	2	---	---
39C	Power Fuse (2 Pack) (60 Amp)	---	---	---	---	---	R02.03.015.02	---	---
	Quantity	---	---	---	---	---	2	---	---
39D	Power Fuse (2 Pack)	---	---	---	---	---	---	---	---
	Quantity	---	---	---	---	---	---	---	---
40	Control Fuse Block	---	02.03.022.00	---	02.03.022.00	---	02.03.023.00	---	02.03.004.00
41	Control Fuse (2 Pack)	---	R02.03.014.02	---	R02.03.014.02	---	R02.03.013.02	---	R02.03.001.02
	Electrical Diagram	---	HC1-2505	---	HC1-2509	---	HC1-2513	---	HC1-1177

Shaded area reflects **export models only**.

**PARTS SPECIFIC TO MODEL S-57**

ITEM	DESCRIPTION	240V	240V	380V	415V	600V
		Single Phase	Three Phase	Three Phase	Three Phase	Three Phase
32	Tank with Gaskets	---	R01.02.009S.00	R01.02.009S.00	R01.02.009S.00	R01.02.009S.00
33	Heating Element	---	R02.04.632.00	R02.04.631.00	R02.04.632.00	R02.04.633.00
	Quantity	---	9	9	9	9
34	Contactors	---	02.01.016.00	02.01.016.00	02.01.016.00	02.01.016.00
	Quantity	---	3	3	3	3
35	Transformer, Step Down	---	---	R02.17.003.00	R02.17.002.00	02.17.009.00
36	Terminal Block	---	02.15.008.00	02.15.021.00	02.15.021.00	02.15.021.00
37	Indicator Light, Red	---	02.19.151.00	02.19.151.00	02.19.151.00	02.19.151.00
38A	Power Fuse Block	---	---	---	---	---
	Quantity	---	---	---	---	---
38B	Power Fuse Block	---	---	---	---	---
	Quantity	---	---	---	---	---
38C	Power Fuse Block	---	---	---	---	---
	Quantity	---	---	---	---	---
38D	Power Fuse Block	---	---	---	---	---
	Quantity	---	---	---	---	---
38E	Power Fuse Block	---	---	---	---	---
	Quantity	---	---	---	---	---
39A	Power Fuse (2 Pack)	---	---	---	---	---
	Quantity	---	---	---	---	---
39B	Power Fuse (2 Pack)	---	---	---	---	---
	Quantity	---	---	---	---	---
39C	Power Fuse (2 Pack)	---	---	---	---	---
	Quantity	---	---	---	---	---
39D	Power Fuse (2 Pack)	---	---	---	---	---
	Quantity	---	---	---	---	---
40	Control Fuse Block	---	02.03.004.00	---	---	02.03.016.00
41	Control Fuse (2 Pack)	---	R02.03.001.02	R02.03.005A.02	R02.03.005A.02	R02.03.021.02
	Electrical Diagram	---	HC1-1177	HC1-1180	HC1-1180	HC1-1180

Shaded area reflects **export models only**.

**PARTS SPECIFIC TO MODEL S-58**

ITEM	DESCRIPTION	208V	208V	240V	240V	480V	480V	208V	208V
		Single Phase	Three Phase	Single Phase	Three Phase	Single Phase	Three Phase	Single Phase	Three Phase
32	Tank with Gaskets	---	R01.02.008S.00†	---	R01.02.009S.00	---	R01.02.009S.00	---	R01.02.009S.00
33	Heating Element	---	R02.04.720.00†	---	R02.04.653.00	---	R02.04.655.00	---	R02.04.650.00
	Quantity	---	6	---	9	---	9	---	9
34	Contactors	---	02.01.015.00	---	02.01.015.00	---	02.01.015.00	---	02.01.016.00
	Quantity	---	4	---	3	---	3	---	3
35	Transformer, Step Down	---	02.17.004.00	---	02.17.004.00	---	02.17.005.00	---	---
36	Terminal Block	---	---	---	---	---	02.15.021.00	---	02.15.008.00
37	Indicator Light, Red	---	02.19.154.00	---	02.19.154.00	---	02.19.154.00	---	02.19.151.00
38A	Power Fuse Block	---	---	---	02.41.010.00	---	---	---	---
	Quantity	---	---	---	3	---	---	---	---
38B	Power Fuse Block	---	---	---	---	---	02.41.030.00	---	---
	Quantity	---	---	---	---	---	2	---	---
38C	Power Fuse Block	---	02.41.020.00	---	---	---	---	---	---
	Quantity	---	1	---	---	---	---	---	---
38D	Power Fuse Block	---	02.41.021.00	---	---	---	---	---	---
	Quantity	---	1	---	---	---	---	---	---
38E	Power Fuse Block	---	02.41.022.00	---	---	---	---	---	---
	Quantity	---	1	---	---	---	---	---	---
39A	Power Fuse (2 Pack) (60 Amp)	---	R02.03.033.02	---	R02.03.033.02	---	---	---	---
	Quantity	---	6	---	5	---	---	---	---
39B	Power Fuse (2 Pack) (35 Amp)	---	---	---	---	---	R02.03.010.02	---	---
	Quantity	---	---	---	---	---	2	---	---
39C	Power Fuse (2 Pack) (60 Amp)	---	---	---	---	---	R02.03.015.02	---	---
	Quantity	---	---	---	---	---	2	---	---
39D	Power Fuse (2 Pack)	---	---	---	---	---	---	---	---
	Quantity	---	---	---	---	---	---	---	---
40	Control Fuse Block	---	02.03.022.00	---	02.03.022.00	---	02.03.023.00	---	02.03.004.00
41	Control Fuse (2 Pack)	---	R02.03.014.02	---	R02.03.014.02	---	R02.03.013.02	---	R02.03.001.02
	Electrical Diagram	---	HC1-2505	---	HC1-2509	---	HC1-2513	---	HC1-1177

Shaded area reflects **export models only**.

† Units manufactured before January 1980 may use a nine hole tank and nine heating elements.  
Consult factory with serial number for details.

**PARTS SPECIFIC TO MODEL S-58**

ITEM	DESCRIPTION	240V	240V	380V	415V	600V
		Single Phase	Three Phase	Three Phase	Three Phase	Three Phase
32	Tank with Gaskets	---	R01.02.009S.00	R01.02.009S.00	R01.02.009S.00	R01.02.009S.00
33	Heating Element	---	R02.04.653.00	R02.04.651.00	R02.04.653.00	R02.04.654.00
	Quantity	---	9	9	9	9
34	Contactors	---	02.01.016.00	02.01.016.00	02.01.016.00	02.01.016.00
	Quantity	---	3	3	3	3
35	Transformer, Step Down	---	---	R02.17.003.00	R02.17.002.00	02.17.009.00
36	Terminal Block	---	02.15.008.00	02.15.021.00	02.15.021.00	02.15.021.00
37	Indicator Light, Red	---	02.19.151.00	02.19.151.00	02.19.151.00	02.19.151.00
38A	Power Fuse Block	---	---	---	---	---
	Quantity	---	---	---	---	---
38B	Power Fuse Block	---	---	---	---	---
	Quantity	---	---	---	---	---
38C	Power Fuse Block	---	---	---	---	---
	Quantity	---	---	---	---	---
38D	Power Fuse Block	---	---	---	---	---
	Quantity	---	---	---	---	---
38E	Power Fuse Block	---	---	---	---	---
	Quantity	---	---	---	---	---
39A	Power Fuse (2 Pack)	---	---	---	---	---
	Quantity	---	---	---	---	---
39B	Power Fuse (2 Pack)	---	---	---	---	---
	Quantity	---	---	---	---	---
39C	Power Fuse (2 Pack)	---	---	---	---	---
	Quantity	---	---	---	---	---
39D	Power Fuse (2 Pack)	---	---	---	---	---
	Quantity	---	---	---	---	---
40	Control Fuse Block	---	02.03.004.00	---	---	02.03.016.00
41	Control Fuse (2 Pack)	---	R02.03.001.02	R02.03.005A.02	R02.03.005A.02	R02.03.021.02
	Electrical Diagram	---	HC1-1177	HC1-1180	HC1-1180	HC1-1180

Shaded area reflects **export models only**.

## HATCO AUTHORIZED PARTS DISTRIBUTORS

### ALABAMA

Jones McLeod Appl. Svc.  
Birmingham 205-251-0159

### ARIZONA

Auth. Comm. Food Equip.  
Phoenix 602-234-2443  
Byassee Equipment Co.  
Phoenix 602-252-0402

### CALIFORNIA

Industrial Electric  
Huntington Beach 714-379-7100  
Chapman Appl. Service  
San Diego 619-298-7106  
P & D Appliance  
S. San Francisco 650-635-1900

### COLORADO

Hawkins Commercial Appliance  
Englewood 303-781-5548

### DELAWARE

Food Equipment Service  
Wilmington 302-996-9363

### FLORIDA

Whaley Foodservice Repair  
Jacksonville 904-725-7800  
Universal Restaurant Services  
Miami 305-593-5488  
Nass Service Co., Inc.  
Orlando 407-425-2681  
B.G.S.I.  
Pompano Beach 954-971-0456  
Comm. Appliance Service  
Tampa 813-663-0313

### GEORGIA

TWC Services  
Smyrna 770-438-9797  
Heritage Service Group  
Norcross 866-388-9837  
Southeastern Rest. Svc.  
Norcross 770-446-6177

### HAWAII

Burney's Comm. Service, Inc.  
Honolulu 808-848-1466  
Food Equip Parts & Service  
Honolulu 808-847-4871

### ILLINOIS

Parts Town  
Lombard 708-865-7278  
Eichenauer Elec. Service  
Decatur 217-429-4229  
Midwest Elec. Appl. Service  
Elmhurst 630-279-8000  
Cone's Repair Service  
Moline 309-797-5323

### INDIANA

GCS Service  
Indianapolis 317-545-9655

### IOWA

Electric Motor Service Co.  
Davenport 319-323-1823  
Goodwin Tucker Group  
Des Moines 515-262-9308

### KENTUCKY

GCS Service  
Louisville 502-367-1788

### LOUISIANA

Chandlers Parts & Service  
Baton Rouge 225-272-6620

### MARYLAND

Electric Motor Service  
Baltimore 410-467-8080

GCS Service  
Silver Spring 301-585-7550

### MASSACHUSETTS

Ace Service Co., Inc.  
Needham 781-449-4220

### MICHIGAN

Commercial Kitchen Service  
Bay City 517-893-4561  
Bildons Appliance Service  
Detroit 248-478-3320  
Midwest Food Equip. Service  
Grandville 616-261-2000

### MINNESOTA

GCS Service  
Minneapolis 612-546-4221

### MISSOURI

General Parts  
Kansas City 816-421-5400  
Commercial Kitchen Services  
St. Louis 314-890-0700  
Kaemmerlen Parts & Service  
St. Louis 314-535-2222

### NEBRASKA

Anderson Electric  
Omaha 402-341-1414

### NEVADA

Burney's Commercial  
Las Vegas 702-736-0006

Hi. Tech Commercial Service  
N. Las Vegas 702-649-4616

### NEW JERSEY

Jay Hill Repair  
Fairfield 973-575-9145  
Service Plus  
Flanders 973-691-6300

### NEW YORK

Acme American Repairs, Inc.  
Brooklyn 718-456-6544  
Alpro Service Co.  
Brooklyn 718-386-2515  
Appliance Installation  
Buffalo 716-884-7425  
Northern Parts Dist.  
Plattsburgh 518-563-3200  
J.B. Brady, Inc.  
Syracuse 315-422-9271

### NORTH CAROLINA

Authorized Appliance  
Charlotte 704-377-4501

### OHIO

Akron/Canton Comm. Svc. Inc.  
Akron 330-753-6635  
Certified Service Center  
Cincinnati 513-772-6600  
Commercial Parts and Service  
Columbus 614-221-0057  
Electrical Appl. Repair Service  
Independence 216-459-8700  
E. A. Wichman Co.  
Toledo 419-385-9121

### OKLAHOMA

Hagar Rest. Service, Inc.  
Oklahoma City 405-235-2184  
Krueger, Inc.  
Oklahoma City 405-528-8883

### OREGON

Bressie Electric Co.  
Portland 503-231-7171  
Ron's Service, Inc.  
Portland 503-624-0890

### PENNSYLVANIA

Elmer Schultz Services  
Philadelphia 215-627-5401  
FAST Comm. Appl. Service  
Philadelphia 215-288-4800  
GCS Service  
Pittsburgh 412-787-1970  
K & D Service Co.  
Harrisburg 717-236-9039  
Electric Repair Co.  
Reading 610-376-5444

### RHODE ISLAND

Marshall Electric Co.  
Providence 401-331-1163

### SOUTH CAROLINA

Whaley Foodservice Repair  
W. Columbia 803-791-4420

### TENNESSEE

Camp Electric  
Memphis 901-527-7543

### TEXAS

Stove Parts Supply  
Fort Worth 817-831-0381  
Armstrong Repair Service  
Houston 713-666-7100  
Commercial Kitchen Repair Co.  
San Antonio 210-735-2811

### UTAH

La Monica's Rest. Equip. Service  
Murray 801-263-3221

### VIRGINIA

Daubers  
Norfolk 757-855-4097  
Daubers  
Springfield 703-866-3600

### WASHINGTON

Restaurant Appl. Service  
Seattle 206-524-8200

### WISCONSIN

A.S.C., Inc.  
Madison 608-246-3160  
A.S.C., Inc.  
Milwaukee 414-543-6460

## CANADA

### BRITISH COLUMBIA

Key Food Equipment Service  
Vancouver 604-433-4484

### MANITOBA

Denko Mechanical Ltd.  
Winnipeg 204-233-8003

### ONTARIO

R.G. Henderson Ltd.  
Toronto 416-422-5580  
Choquette CKS  
Ottawa 613-739-8458

### QUÉBEC

Choquette CKS  
Montreal 514-722-2000  
Choquette CKS  
Québec City 418-681-3944

## HATCO CORPORATION

P.O. Box 340500, Milwaukee, WI 53234-0500 U.S.A.

(800) 558-0607 (414) 671-6350

Parts & Service Fax (800) 690-2966 Int'l. Fax (414) 671-3976

www.hatcocorp.com