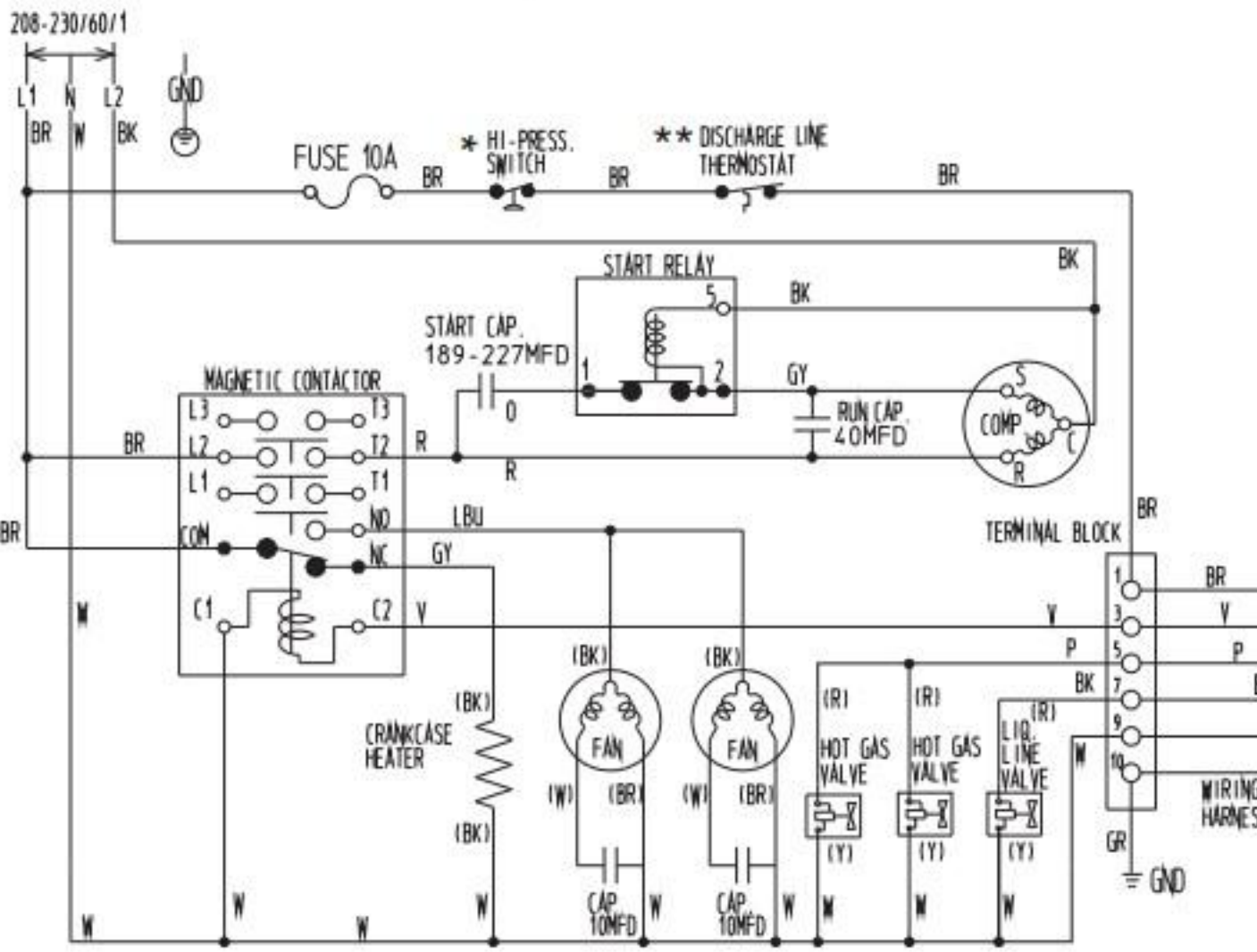
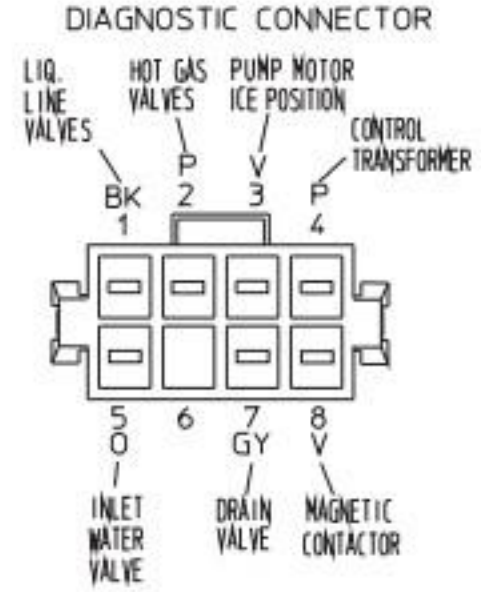


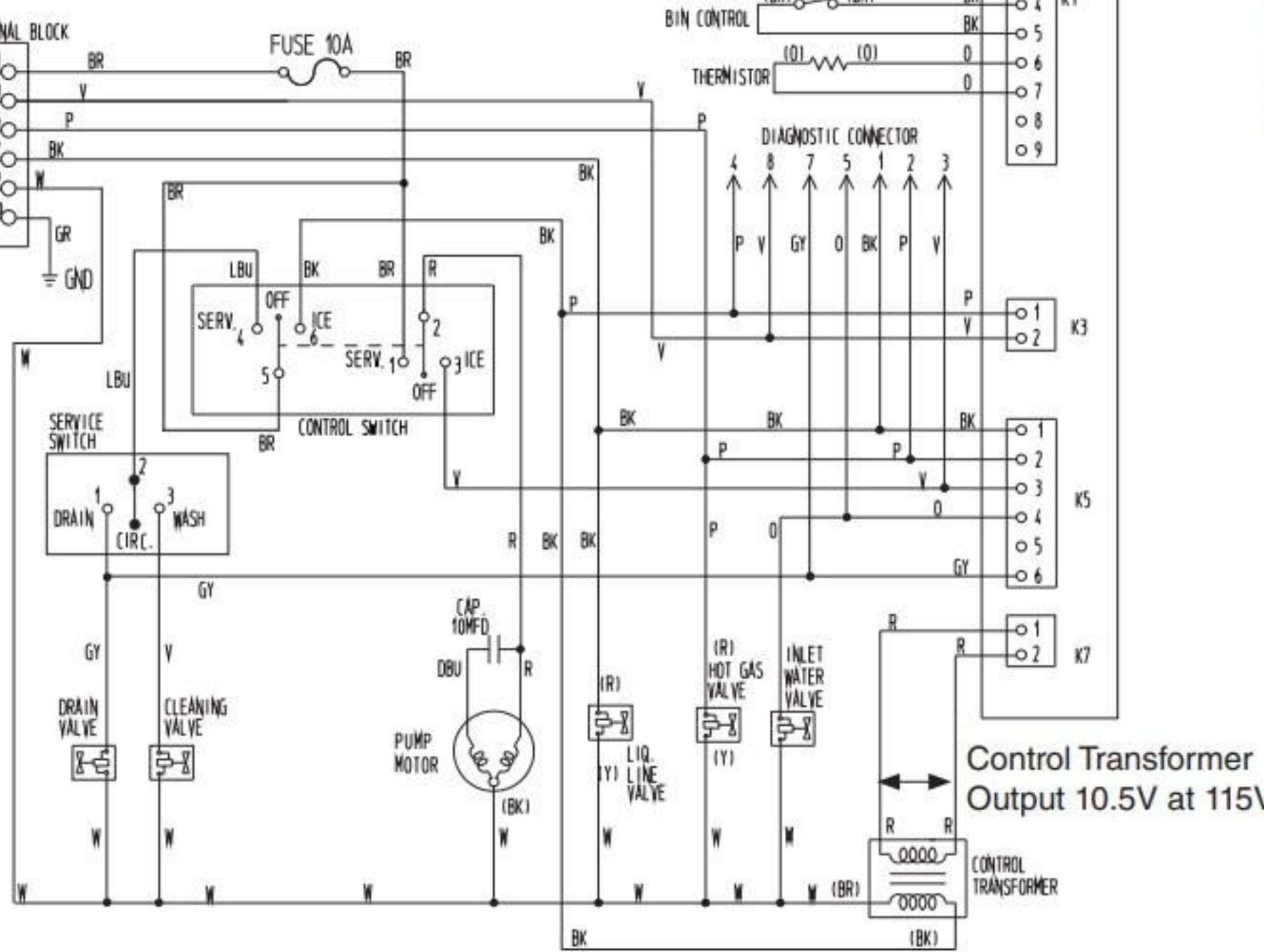
SRK SINGLE PHASE



- WIRE COLOR CODE
- BK - BLACK
 - BR - BROWN
 - DBU - DARK BLUE
 - GR - GREEN
 - GY - GRAY
 - LBU - LIGHT BLUE
 - O - ORANGE
 - P - PINK
 - R - RED
 - V - VIOLET
 - W - WHITE
 - Y - YELLOW



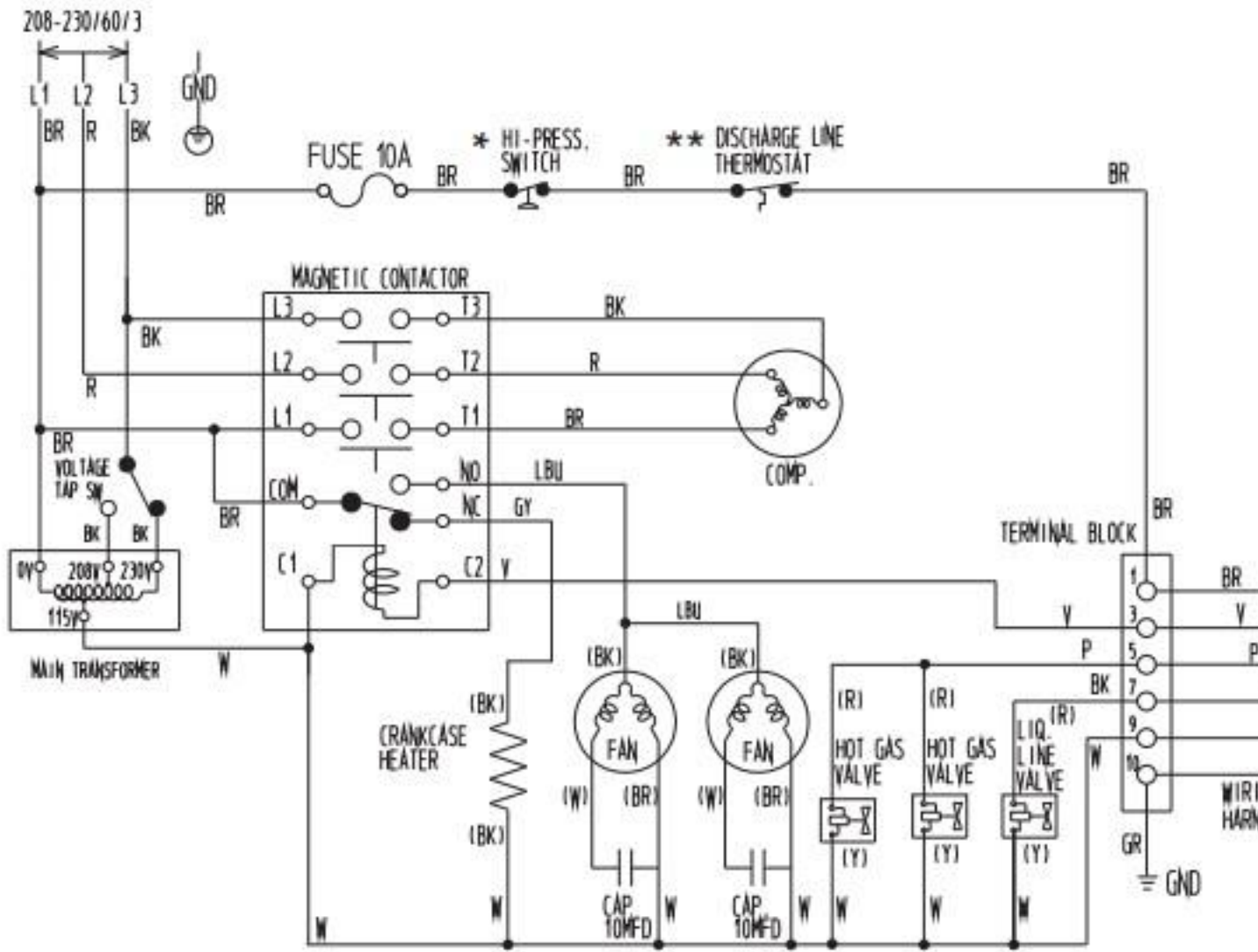
KMS



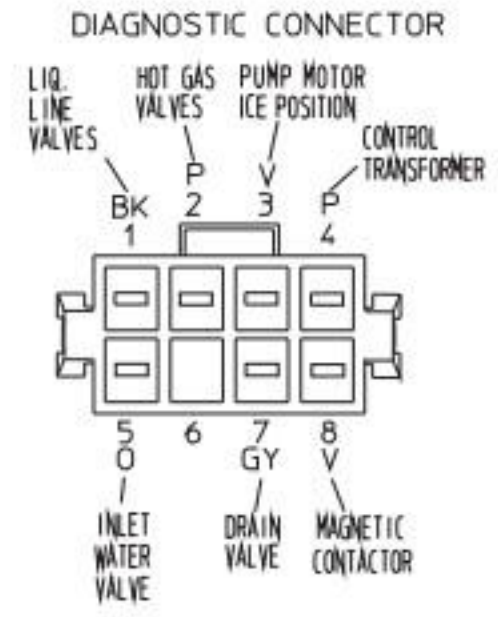
S1 DIP SWITCH										
	S1 DIP SWITCH NO.									
MODEL	NO. 1	NO. 2	NO. 3	NO. 4	NO. 5	NO. 6	NO. 7	NO. 8	NO. 9	NO. 10
KMS-2000MLH	OFF	OFF	OFF	OFF	ON	ON	ON	ON	OFF	OFF

S2 DIP SWITCH						
	S2 DIP SWITCH NO.					
MODEL	NO. 1	NO. 2	NO. 3	NO. 4	NO. 5	NO. 6
KMS-2000MLH	ON	ON	OFF	OFF	OFF	OFF

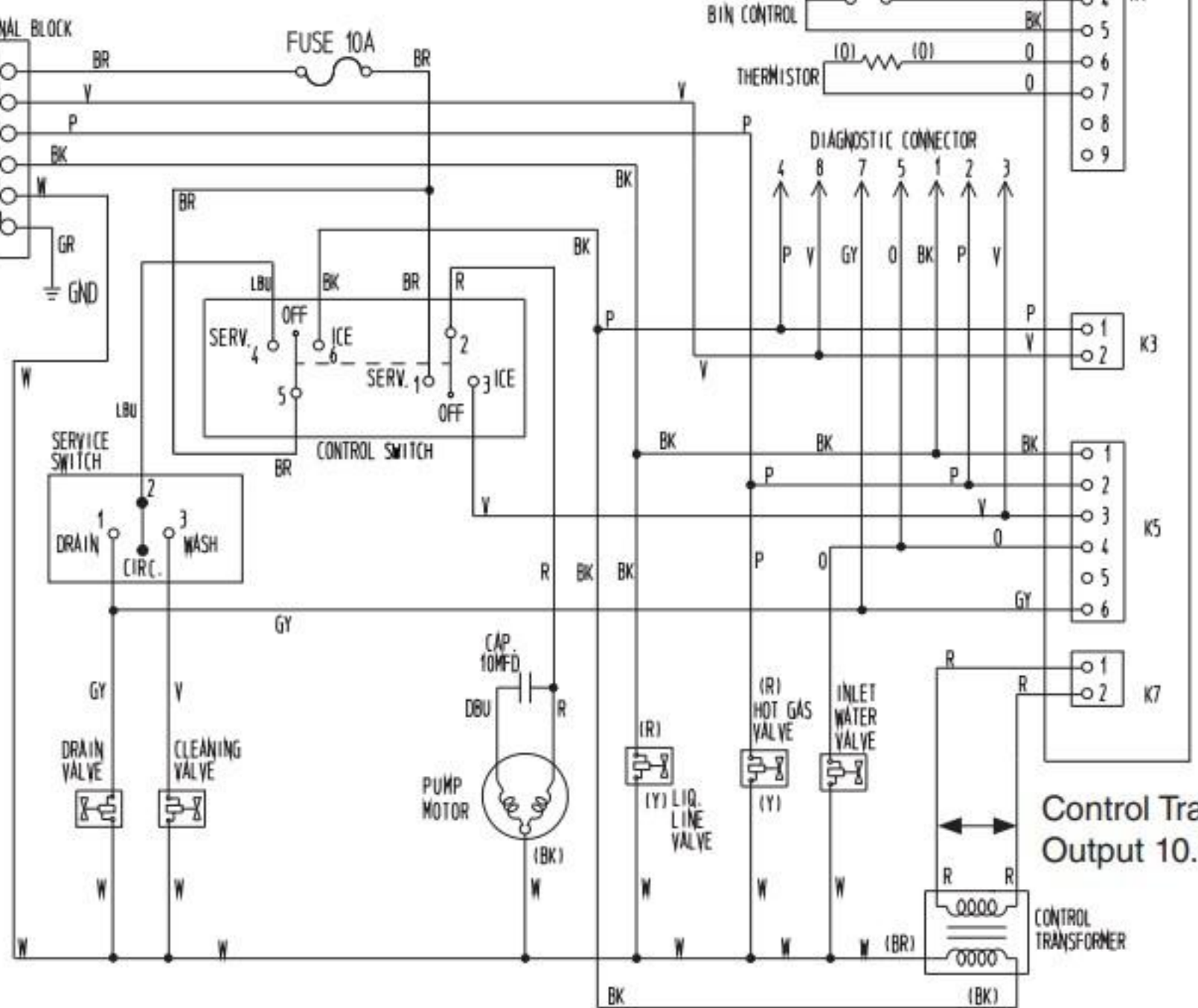
SRK THREE PHASE



- WIRE COLOR CODE**
- BK - BLACK
 - BR - BROWN
 - DBU - DARK BLUE
 - GR - GREEN
 - GY - GRAY
 - LBU - LIGHT BLUE
 - O - ORANGE
 - P - PINK
 - R - RED
 - V - VIOLET
 - W - WHITE
 - Y - YELLOW



KMS



S1 DIP SWITCH

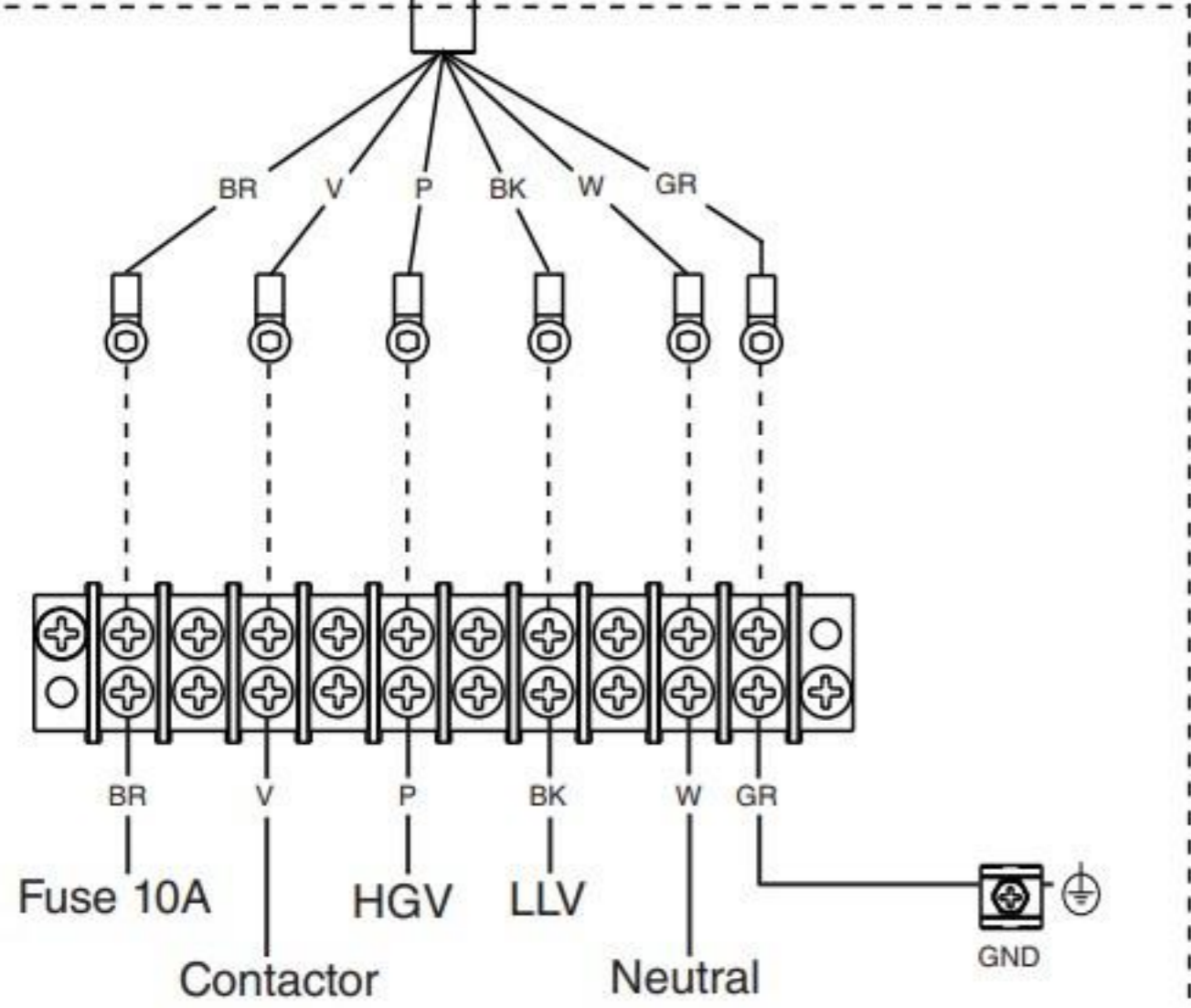
MODEL	S1 DIP SWITCH NO.									
	NO. 1	NO. 2	NO. 3	NO. 4	NO. 5	NO. 6	NO. 7	NO. 8	NO. 9	NO. 10
KMS-2000MLH	OFF	OFF	OFF	OFF	ON	ON	ON	ON	OFF	OFF

S2 DIP SWITCH

MODEL	S2 DIP SWITCH NO.					
	NO. 1	NO. 2	NO. 3	NO. 4	NO. 5	NO. 6
KMS-2000MLH	ON	ON	OFF	OFF	OFF	OFF

Control Transformer Output 10.5V at 115V

SRK Remote Condensing Unit



KMS Icemaker Unit (factory connected)

