



*Hollymatic*®

# Model 28, 55, 88 Stuffers



## OPERATORS MANUAL – PARTS LIST

EVERY PERSON OPERATING THIS MACHINE MUST READ THIS MANUAL INCLUDING ALL SAFETY INSTRUCTIONS BEFORE ATTEMPTING TO OPERATE THIS MACHINE. PROPER GUARDS AND SAFETY DEVICES ARE INSTALLED FOR YOUR SAFETY. DO NOT OPERATE THE MACHINE UNLESS ALL GUARDS ARE IN PLACE.

COPYRIGHT © 2020 BY  
HOLLYMATIC CORPORATION

SEPTEMBER, 2020

HOLLYMATIC CORPORATION  
600 E. PLAINFIELD ROAD  
COUNTRYSIDE, ILLINOIS 60525  
PHONE: 708-579-3700  
FAX: 708-579-1057

**NEW EQUIPMENT COVERED BY THE DIRECTIVE**

- 1. CEM 2004 / 108 / CE**
- 2. BT 2006 / 95 / CE**
- 3. MACHINE 2006 / 42 / CE**

**CERTIFICATE OF COMPLIANCE rules of the European  
Community.**



# Table of contents

1 Introduction and standards .....	1
2 Installation and Electrical connection .....	2
3 Features and specifications .....	3
4 Getting started .....	4
5 Good using.....	4
6 Cleaning.....	6
7 Maintenance .....	7
8 Accessories.....	7
9 Warranty .....	8
10 Electrical schemes Tri phases .....	9
11 Electrical schemes single phase .....	10
12 Exploded scheme .....	11
Detail (A) :.....	12
Detail (B) :.....	13
13 Nomenclature.....	14

# **1 Introduction and standards**

Fillers VILLA 13, 25 and 40L allow the filling of any kind of flesh mix mainly for production of sausages.

## **STANDARDS**

These devices meet the requirements of the decrees and safety standards.

General hygiene and safety laid down in Articles R233-84 R233-106, introduced in the Labour Decree No. 80543 of July 15, 1980.

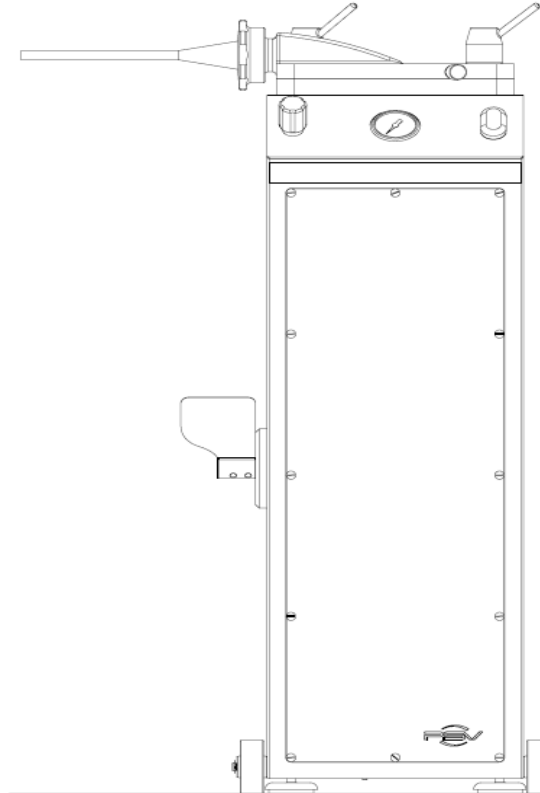
The control devices and signage, exhibit a degree of protection IP54 as defined in standard NF 20-010.

All devices present a degree of protection IP245.

Continuous sound pressure level equivalent to the Workstation measured according to standard NF S31 124 P <70 dB (A) empty and loaded

## 2 Installation and Electrical connection

- ❖ Position the machine on a stable and solid work surface.

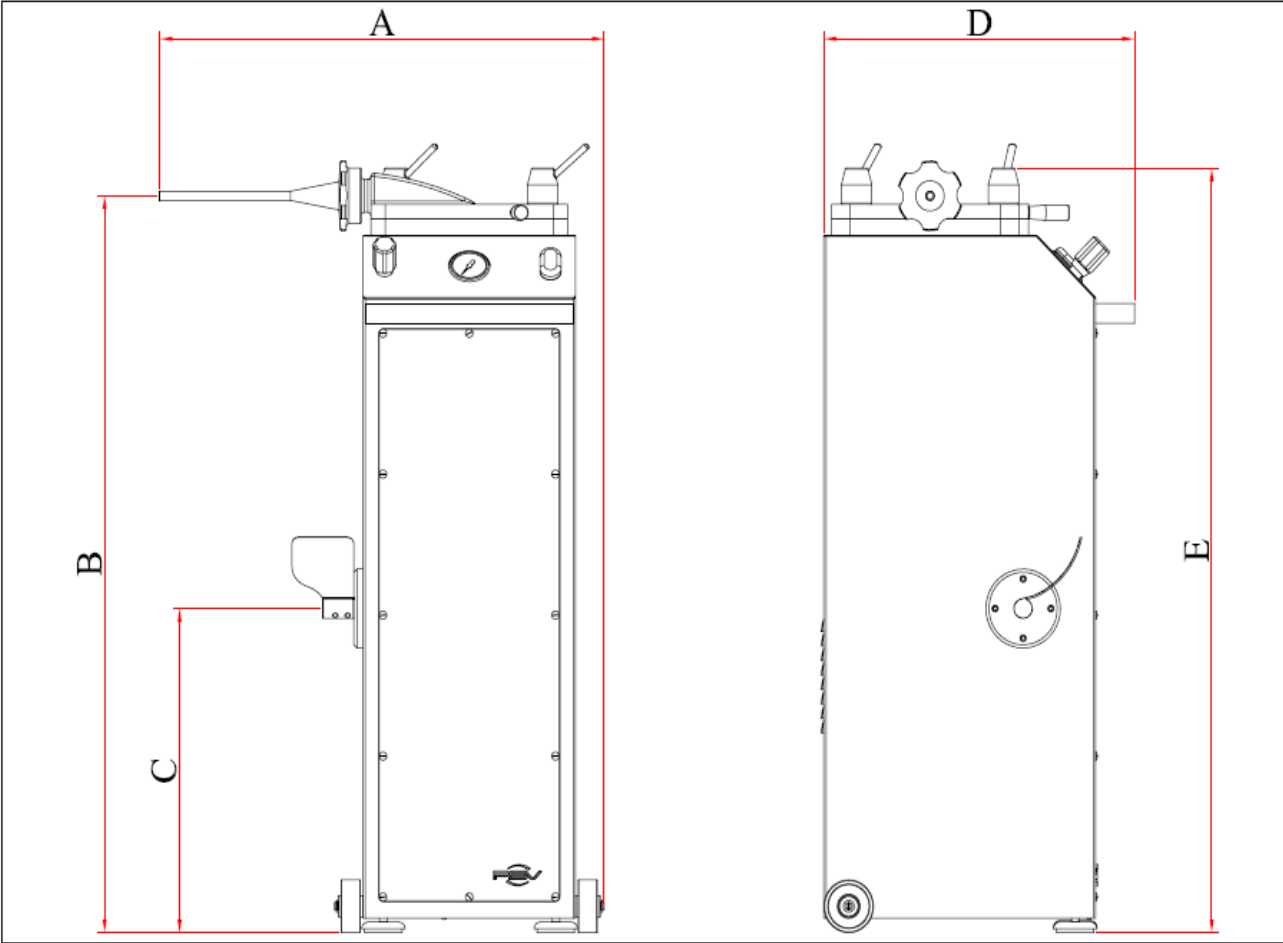


### **ELECTRICAL CONNECTION**

- ❖ The electrical connection must be performed by qualified personnel and be conducted in compliance with safety standards in force.
- ❖ The line of the power supply must be carried out using a cable section adapted to the power of the machine and must include three phase conductors and a grounding conductor (voltage machine 400v, 50 Hz) or two phase conductors and a grounding conductor (voltage machine 230v, 50 Hz) .
- ❖ The power of the machine must be protected by a breaker.

# 3 Features and specifications

## SIZES



mm	VILLA 13	VILLA 25	VILLA 40
A	605	660	730
B	975	1103	1210
C	497	497	497
D	430	500	590
E	1014	1148	1270

## **TECHNICAL DETAILS**

		<b>VILLA 13</b>	<b>VILLA 25</b>	<b>VILLA 40</b>
<b>Cylinder capacity</b>	<b>Litres</b>	13L	25L	40L
<b>Cylinder capacity for meat weight</b>	<b>± Kg</b>	10kg	20kg	35kg
<b>Engin Power</b>	<b>MONO</b>	1HP- 0,75KW	1,5HP - 1,1KW	-
	<b>TRI</b>	0,75HP- 0,55KW	1HP - 0,75 KW	1,5HP - 1,1KW
<b>Oil tank capacity</b>	<b>Litres</b>	6L	9L	15L
<b>Lids / piston</b>	<b>Matière</b>	INOX	INOX	INOX
<b>PWeight</b>	<b>± Kg</b>	87kg	137,5kg	

## **4 Getting started**

### **Electrical :**

Check the main voltage.

The machine comes standard with three-phase 400 V, 230 V on request 230 V single phase or three-phase.

### **On the base:**

Attach the pedal on the axis with the two pointed screws

(Allen wrench).

### **OPERATION:**

If the piston does not move by pushing the foot pedal, reverse 2 wire on the plug (Three Phase).

## 5 Good using

- Do not lay down the machine
- Work the paste to a minimum temperature of 10°C.
- BEFORE each using, remove the piston to lubricate the joint.
- BEFORE each use, the piston in the down position, oil the cylinder for a proper functioning of the joint.
- Oil seal cover
- Tighten the two bolts of closing the lid
- When lowering the piston, the peddle locks in the down position so the operator does not need to keep his knee on it. **However, the operator must manually move the peddle to the neutral (center) position when the piston has reached the bottom of the cylinder.**

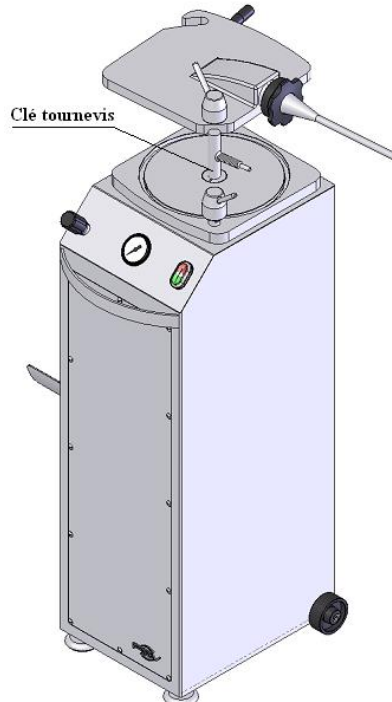
**CAUTION!** Failure to do so will cause the motor to continually run causing the motor to overheat and possibly burn up.

## 6 Cleaning

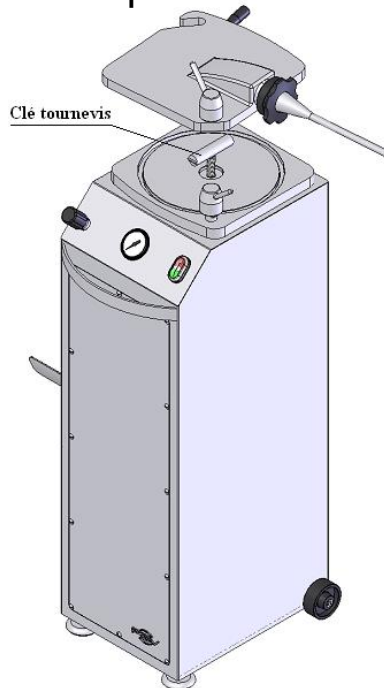
AFTER EACH USE:

1- Put the piston in upper position.

2- Using the key screwdriver, loosen the set screw of the piston



3- Turn the key to extract the piston



4 - Clean the cylinder by hand with warm water.

\* The water is discharged through the hole in the bottom of the cylinder.

\* To reassemble the piston, get the hydraulic cylinder in upper position, and oil the piston seal.

## **7 Maintenance**

Regularly, the piston in the down position, check the oil level in the tank with gauge. Adjust the level if necessary.

## **8 Accessories**

◇ **1 foot pedal and two pointed screws with six key sections**

◇ **1 key screwdriver (piston removal)**

◇ **1 clamping ring**

◇ **Cornet No.1 stainless steel**      **Inner diameter 12 mm**  
**Outer diameter 14 mm**  
**Length 230 mm**

◇ **Cornet No.2 stainless steel**      **Inner diameter 20 mm**  
**Outer diameter 22 mm**  
**Length 236 mm**

◇ **Cornet No.3 stainless steel**      **Inner diameter 28 mm**  
**Outer diameter 30 mm**

**Length 236 mm**

## **9 Warranty**

As a manufacturer, we guarantee our equipment for 6 months against any manufacturing defect.

### **IMPORTANT :**

Electrical parts are excluded from the warranty.

### **WARRANTY LIMITS :**

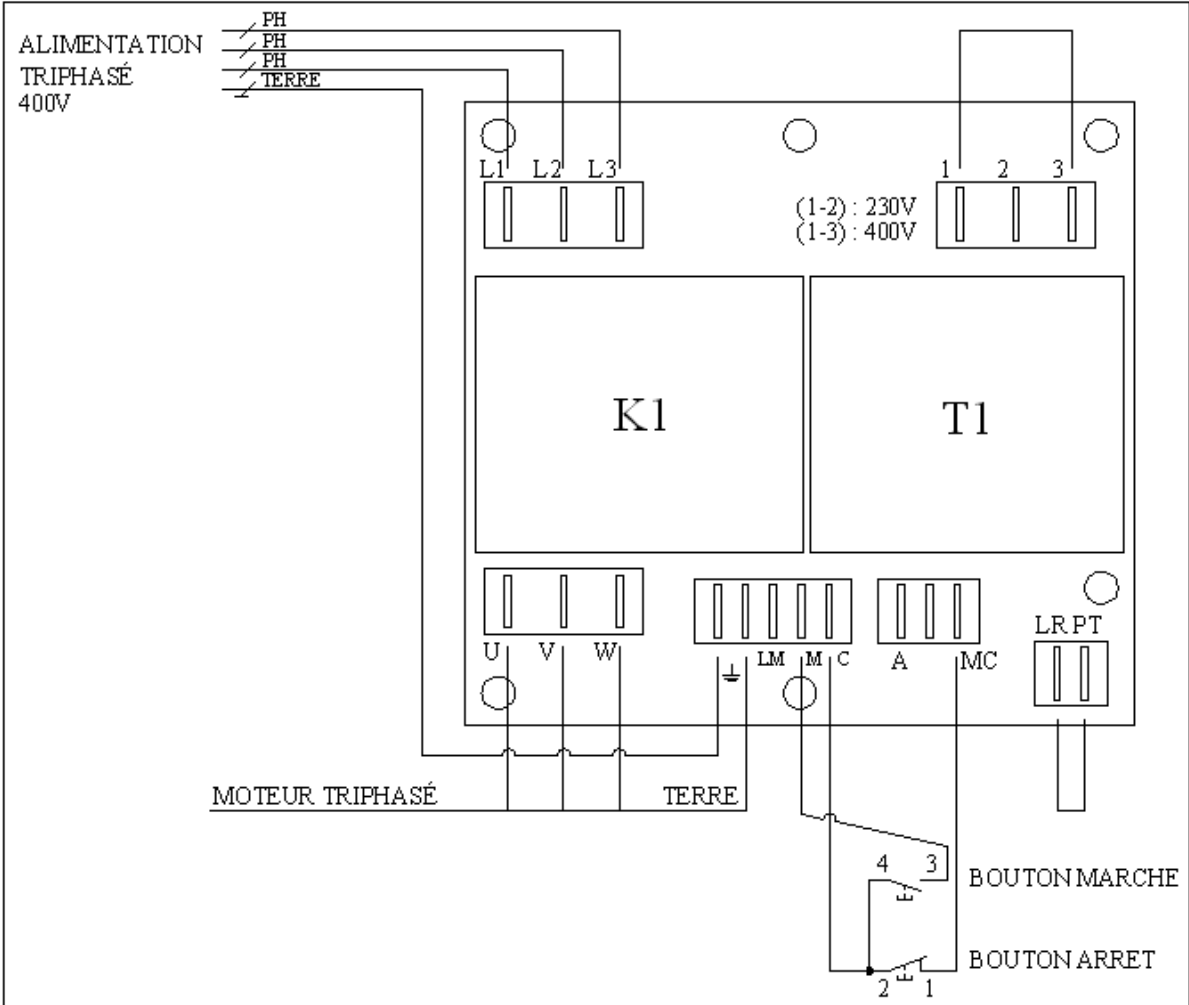
The warranty applies only to the purchaser and not to third parties to which the material could be sold.

Our warranty is limited to replacement or repair at no cost recognized by us defective parts.

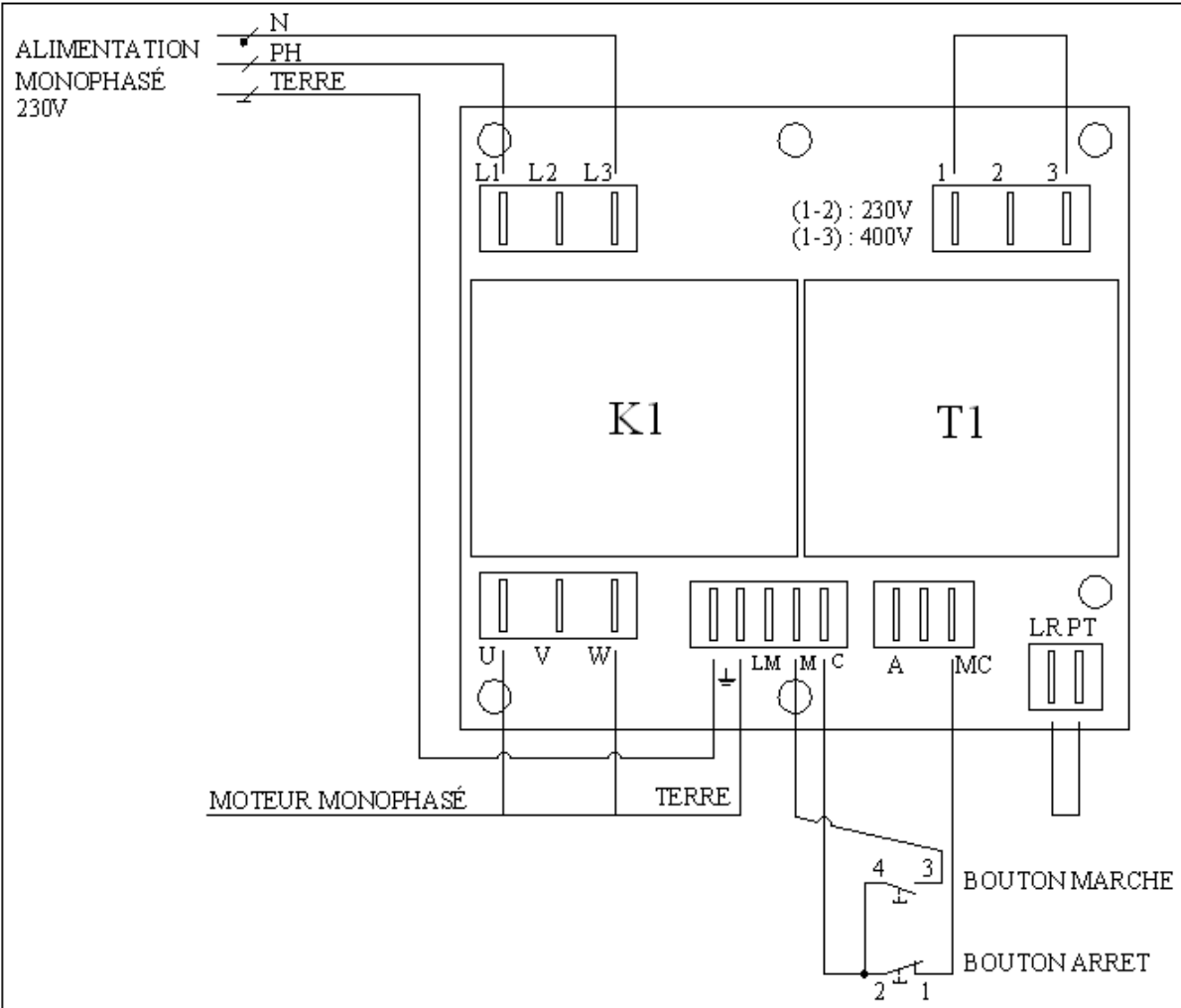
The port and the workforce are in all cases on our distributor's responsibility.

Any misuse and/or non respect of specific instructions, alterations, modifications, or repairs outside the shop of an authorized dealer, as well as the lack of identification plate, result in the cancellation of the guarantee.

# 10 Electrical schemes Tri phases

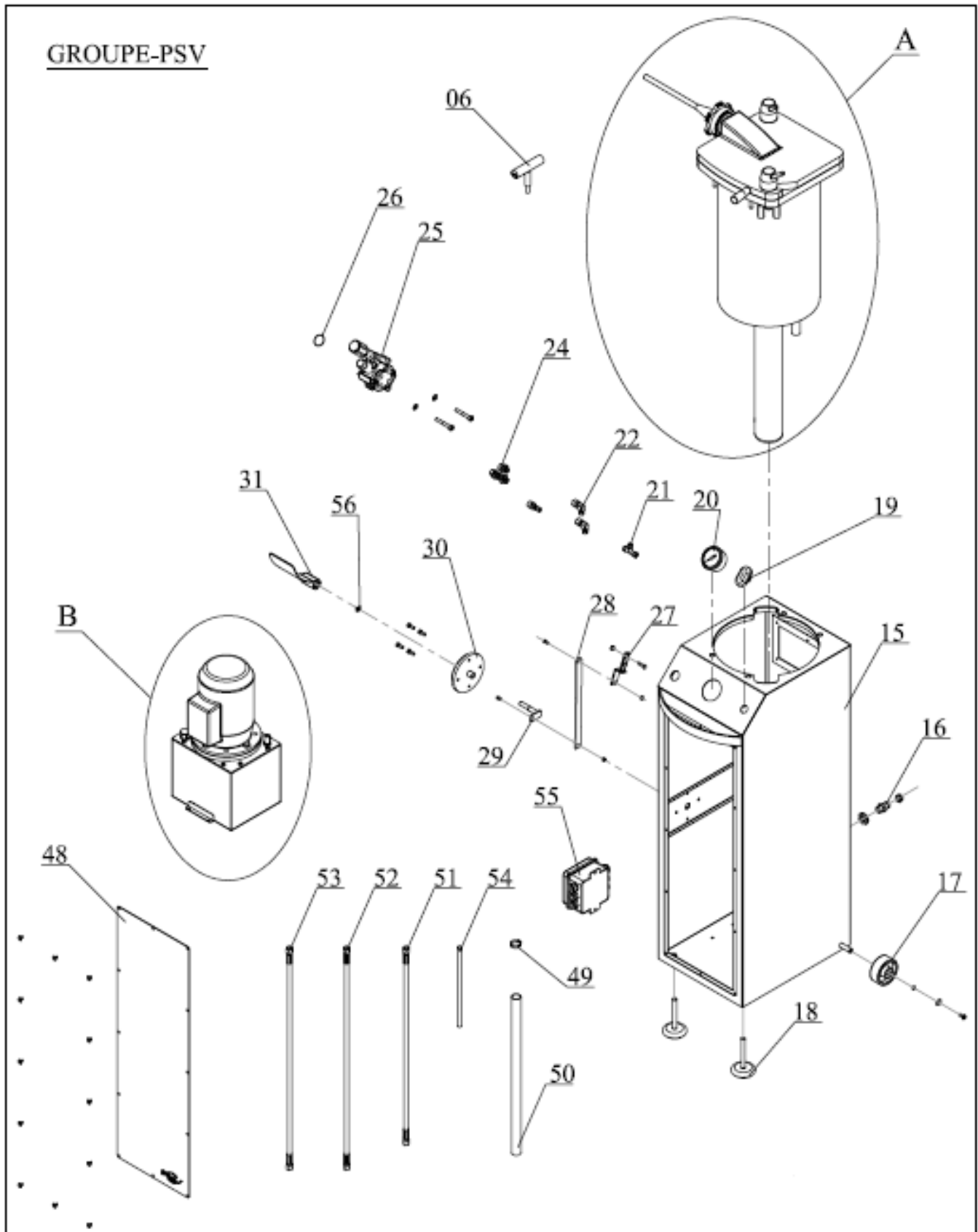


# 11 Electrical schemes single phase



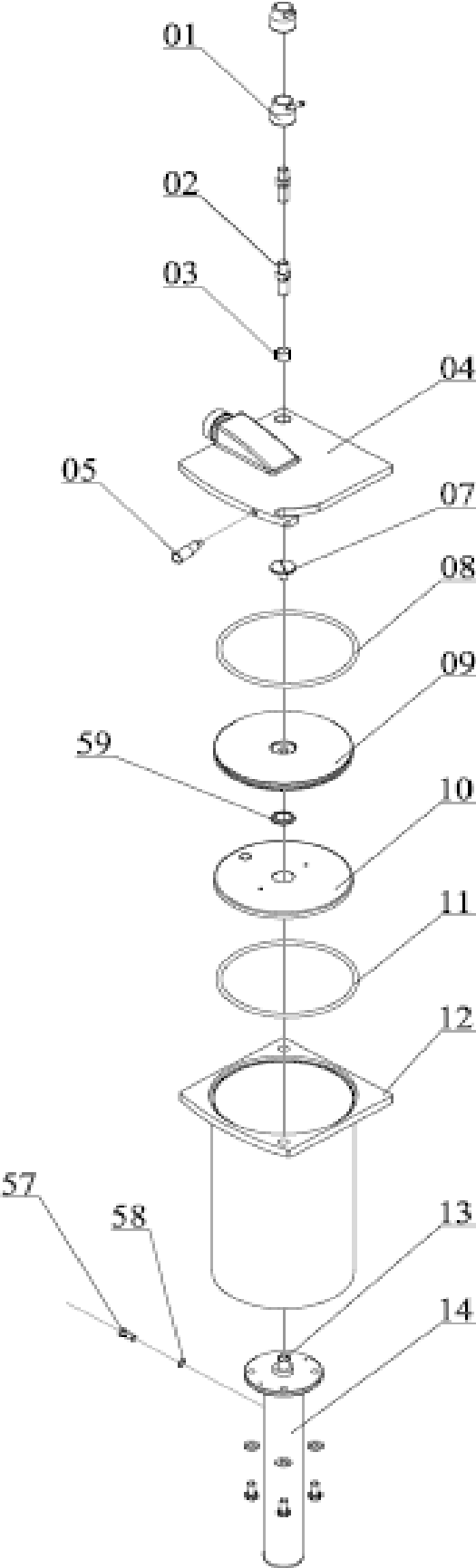
# 12 Exploded scheme

Exploded view :

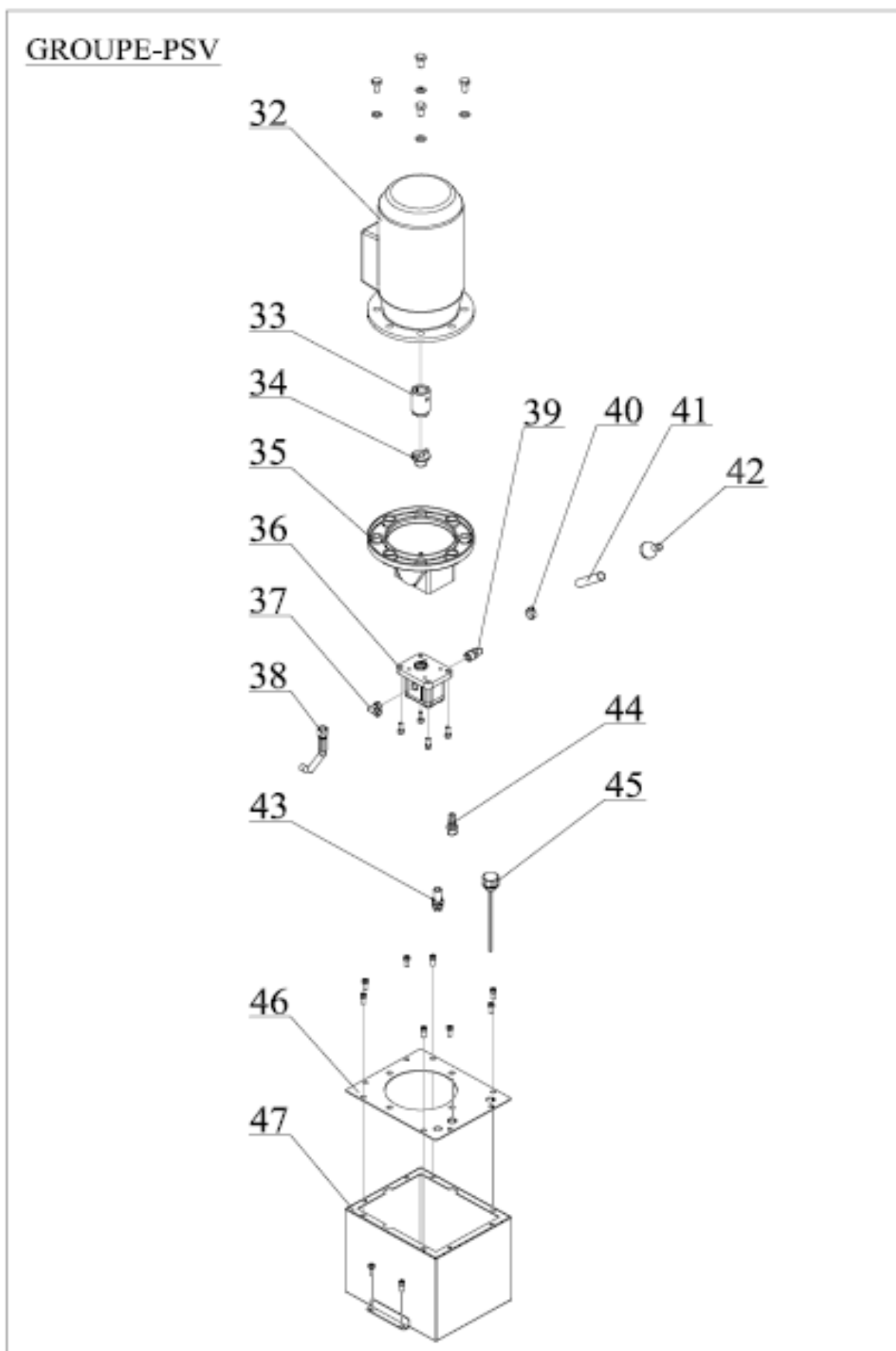


**Detail (A) :**

GROUPE-PSV



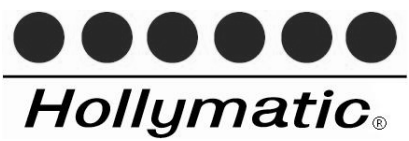
## Detail (B) :



# 13 Nomenclature

NOMENCLATURE FILLERS				
DESIGNATION	MODEL 28 VILLA 13	MODEL 55 VILLA 25	MODEL 88 VILLA 40	REPERE
ACCOUPELEMENT PUMP	1505	1505	1505	34
COUPLING MOTOR	1505	1505	1505	33
PEDAL STEEL SHAFT	1547 (1242-0014)	1547 (1242-0014)	1547 (1242-0014)	29
LID RING DELRIN	1551	1552	1553	03
COLLAR CORNET (Black Plastic Nut for Horn)	776 (1242-0015)	776 (1242-0015)	776 (1242-0015)	60
BIELETTE STEEL DISTRIBUTOR CDE	1520	1521	1522	28
AUXILIARY POWER	451	451	451	19
ELECTRICAL BOX (892 220V) (892US 208V)	892 (1242-0019) 892US(1242-0031)	892 (1242-0019) 892US(1242-0031)	892 (1242-0019) 892US(1242-0031)	55
PLUG GAUGE TANK	267	267	267	45
STOP BUTTON	459-2 (1242-0027)	459-2 (1242-0027)	459-2 (1242-0027)	19
AUXILIARY BLOCK	459-1 (1242-0028)	459-1 (1242-0028)	459-1 (1242-0028)	19
CAP SCREW HCC	260	260	260	
STAINLESS STEEL BODY	1520	1521	1522	15
PISTON KEY	280 (1242-0021)	280 (1242-0021)	280 (1242-0021)	06
BELL	1506	1507	1507	35
COLLIER OETICKER	273a	273a	273a	49
COLLIER OETICKER	273	273	273	40
CONE SERIES 60 Ø14	772	772	772	61
CONE SERIES 60 Ø20	773	773	773	62
CONE SERIES 60 Ø32	774	774	774	63
ELBOW PRESSURE PUMP WES 8 LRK	279	279	279	37
WES 8 ELBOW WITH NUT LSV (ONE SIDE)	278	278	278	22
COVER WITH STEEL CHANNEL	1513	1514	1515	04
SUCTION STRAINER	282	282	282	42
STAINLESS CYLINDER	1500	1501 (1245-0019)	1502-1(1248-0016)	12
DISTRIBUTOR	1503 (1245-0015)	1503 (1245-0015)	1503 (1245-0015)	25
TIP STAINLESS CYLINDER ROD	1538	1539 (1245-0024)	366 (1248-0014)	13
CAPILLARY PRESSURE GAUGE FOR FLEXIBLE		1535	1535	
FLEXIBLE PRESSURE HOSE	292	292	1532	38
FLEXIBLE PRESSURE HOSE	1526	1529 (1245-0025)	1533	53
FLEXIBLE PRESSURE (+ BANJO NUT)	1524	1527	1530	51
FLEXIBLE PRESSURE (+ BANJO NUT)	1525	1528	1531	52
BACKGROUND OF STEEL CYLINDER	1518	341	367 (1248-0017)	10

DESIGNATION	MODEL 28 VILLA 13	MODEL 55 VILLA 25	MODEL 88 VILLA 40	REPERE
RANGE DISTRIBUTOR	328	328	328	27
STUD STAINLESS STEEL COVER	1544	1545	1546	02
LIP SEAL CYLINDER BOTTOM	1517 (1242-0017)	343 (1245-0012)	369 (1248-0013)	59
SEAL PASSAGE OF PARTITION	293	293	293	
SEAL COVER	1523 (1242-0010)	342 (1245-0010)	368 (1248-0010)	08
JOINT COPPER	296	296	296	58
PISTON RING	1519 (1242-0011)	344 (1245-0011)	370 (1248-0011)	11
GAUGE		1534 (1245-0021)	1534 (1245-0021)	20
ENGINE (220/60/1)	1509 (1242-0022)	1511 (1245-0017)	1511 (1245-0017)	32
PASS WIRE DISTRIBUTOR	306	306	306	26
PEDAL STEEL	1555 (1242-0029)	1555 (1242-0029)	1555 (1242-0029)	31
ADJUSTABLE FOOT	308	308	308	18
PISTON STAINLESS	1500	1501	1502-2(1248-0018)	09
HANDLE COVER	310 (1245-0014)	310 (1245-0014)	310 (1245-0014)	05
PUMP	1504 (1248-0015)	1504 (1248-0015)	1504 (1248-0015)	36
DOOR	1520	1521	1522	48
PRESS POWER GLAND	923	923	923	16
ELBOW PVC FITTING	1537	1537	1537	39
PVC FITTING	313	313	313	44
FITTING T		1536	1536	21
Bulkhead RIGHT	304	304	304	43
STAINLESS TANK	1520	1521	1522	47
CLIP WASHER SHAFT PEDAL	Z/064 (1245-0016)	Z/064 (1245-0016)	Z/064 (1245-0016)	56
CASTER BLACK	315 (1245-0020)	315 (1245-0020)	315 (1245-0020)	17
PEDAL SUPPORT BLACK DELRIN	1548	1548	1548	30
TANK TOP PLATE	1520	1521	1522	46
PIPE « TRICOCLAIR AL TRANS »	634a	634a	634a	50
PIPE « TRICOCLAIR AL TRANS retour bache »	634	634	634	41
UNION M GHG LR 8 3/8 DISTRIBUTOR	318	318	318	24
CYLINDER	1516	348 (1245-0018)	375	14
LOCK STAINLESS STEEL COVER	1550	321 (1245-0023)	1554	01
VIS BANGO	322	322	322	57
SCREW STEEL PISTON	1540 (1242-0020)	323 (1245-0013)	323 (1245-0013)	07



HOLLYMATIC CORPORATION 600 E. PLAINFIELD ROAD COUNTRYSIDE, IL 60525 Telephone: (708) 579-3700