



Hollymatic.

MODEL 120 PRECISION BULKER



OPERATORS MANUAL – PARTS LIST

FOR SERIAL NUMBERS BEGINNING WITH 4600

EVERY PERSON OPERATING THIS MACHINE MUST READ THIS MANUAL INCLUDING ALL SAFETY INSTRUCTIONS BEFORE ATTEMPTING TO OPERATE THIS MACHINE. PROPER GUARDS AND SAFETY DEVICES ARE INSTALLED FOR YOUR SAFETY. DO NOT OPERATE THE MACHINE UNLESS ALL GUARDS ARE IN PLACE.

COPYRIGHT © 2010 BY
HOLLYMATIC CORPORATION
MAY, 2016

HOLLYMATIC CORPORATION
600 E. PLAINFIELD ROAD
COUNTRYSIDE, IL 60525
PHONE: (708) 579-3700
FAX: (708) 579-1057

M-1749

I N D E X

SAFETY INSTRUCTIONS _____	1
SAFETY/LABEL LIST _____	1A, 1B
SPECIFICATIONS _____	1C
SET UP AND OPERATION _____	2-8
LUBRICATION _____	8
DISASSEMBLY AND CLEANING _____	8-9
PARTS LOCATION _____	10-18
ELECTRICAL SCHEMATICS _____	19-21
SIGNATURE PAGE _____	23

SAFETY INSTRUCTIONS

WARNING TO ALL PURCHASERS, OPERATORS AND OPERATION SUPERVISORS:

MAKE CERTAIN EVERY PERSON WHO IS TO OPERATE THIS MACHINE HAS READ THIS MANUAL BEFORE BEING PERMITTED TO OPERATE THE MACHINE.

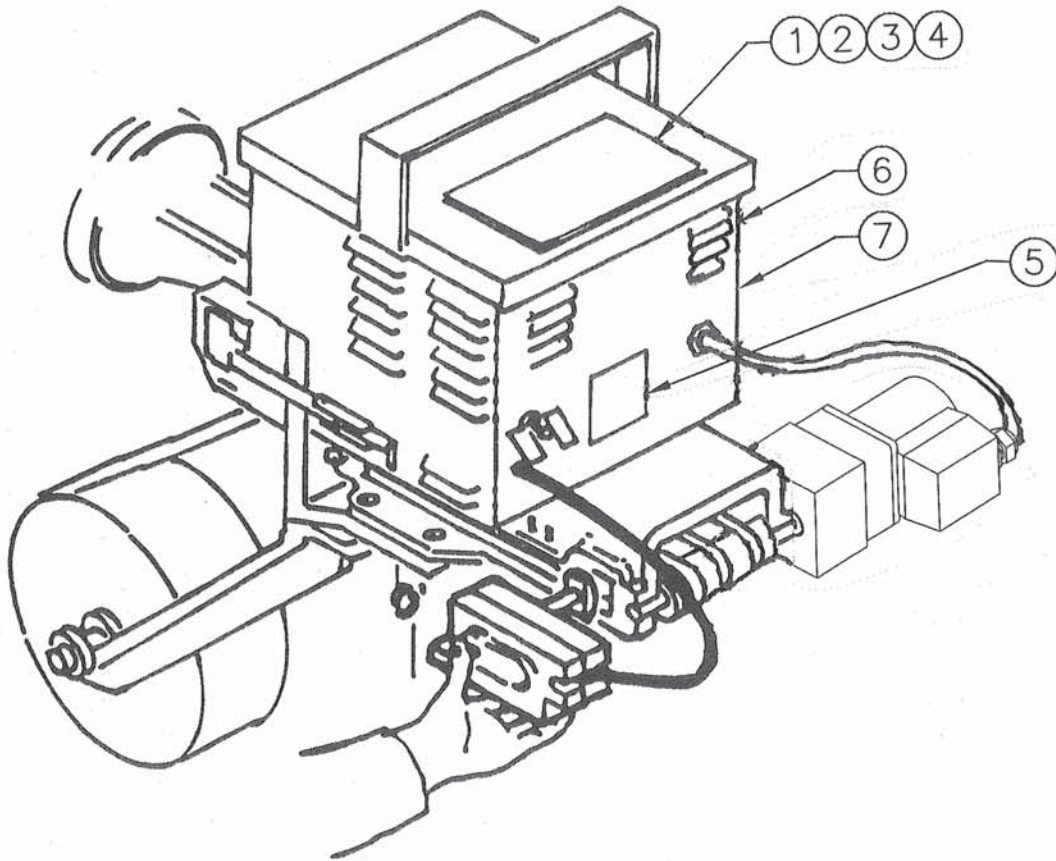
HAVE ALL OPERATORS SIGN THE SIGNATURE PAGE FOUND AT THE END OF THIS MANUAL.

FAILURE TO READ AND ADHERE TO THE FOLLOWING IMPORTANT INSTRUCTIONS COULD RESULT IN BODILY INJURY.

READ THIS MANUAL COMPLETELY BEFORE OPERATING THE HOLLYMATIC MACHINE. ADDITIONAL MANUALS AS WELL AS REPLACEMENT SAFETY LABELS ARE AVAILABLE FROM HOLLYMATIC CORPORATION OR FROM YOUR LOCAL HOLLYMATIC DEALER AT NO COST.

1. DO NOT OPERATE THIS MACHINE UNTIL IT HAS BEEN INSPECTED AND MADE READY FOR OPERATION BY AN AUTHORIZED HOLLYMATIC DEALER.
2. DO NOT OPERATE MACHINE WITHOUT ALL GUARDS IN PLACE.
3. UNPLUG MACHINE WHEN NOT IN USE.
4. ALWAYS DISCONNECT THE MACHINE FROM ITS POWER SOURCE BEFORE CLEANING, SERVICING OR ADJUSTING THE MACHINE.
5. DO NOT OPERATE THE MACHINE IF THE CORD OR PLUG ARE DAMAGED.
6. KEEP HANDS AWAY FROM MOVING PARTS.
7. ALLOW ONLY AN AUTHORIZED HOLLYMATIC DEALER TO REPAIR OR ADJUST YOUR MACHINE.
8. AT ANY TIME AN OPERATOR SUSPECTS THAT AN INTERLOCK OR SAFETY DEVICE IS NOT FUNCTIONING PROPERLY, THE OPERATION SHOULD BE TERMINATED, THE MACHINE UNPLUGGED AND AN AUTHORIZED HOLLYMATIC DEALER CALLED TO INSPECT AND REPAIR THE MACHINE. FAILURE TO FOLLOW THESE DIRECTIONS COULD RESULT IN SERIOUS PERSONAL INJURY.

SAFETY LABEL PLACEMENT MODEL 120 BULKER



ITEM	DESCRIPTION	PART NUMBER
1	BULKER NAMEPLATE	900-0641
2	ELECTRICAL SPECS DECAL (115V)	120-1100
	ELECTRICAL SPECS DECAL (230V)	120-1101
3	cULus LABEL	900-1073
4	NSF LABEL	2281
5	WARNING LABEL	900-0640
6	MADE IN THE USA LABEL	900-2003
7	LABEL 4 AMP FUSE	900-1028
	LABEL 2 AMP FUSE	900-2006

120 BULKER LABEL LIST

° model 120 precision °

○○○○○○○
Hollymatic®

PATENTED IN U.S.A.
4,530,132
serial number

bulker

° hollymatic corporation 9000641 countryside, IL 60525 °

900-0641

115V. 2.3 Amp.
1 Ph 60 HZ

120-1100

230V. 1.2 Amp.
1 Ph 50 HZ

120-1101

FOOD PREPARING MACHINE



LISTED
31L1 T

900-1073



NSF®
D027272

2281

WARNING
KEEP HANDS FROM
UNDER GUARD

**SHARP
KNIFE**



READ OPERATOR'S MANUAL
BEFORE RUNNING MACHINE

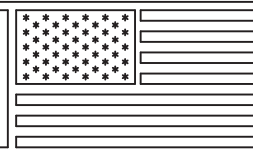
UNPLUG BEFORE CLEANING
OR SERVICING

DO NOT IMMERSE IN WATER

900-0640

900-0640

Proudly
Made in
USA



Hollymatic Corp.
Countryside, IL

900-2003

FUSE
4 AMP
900-1028 T

900-1028

FUSE
2 AMP
900-2006 T

900-2006

SPECIFICATIONS

PORTION WEIGHT: 10 OZ TO 32 OZ

PORTION SIZE: 4 1/8 INCHES WIDE X 1 1/2 INCHES THICK
4 3/8 INCHES TO 9 5/8 INCHES LONG

ADAPTER RINGS: #42 AND #52 HOLLYMATIC, BUTCHER BOY, BIRO, HOBART

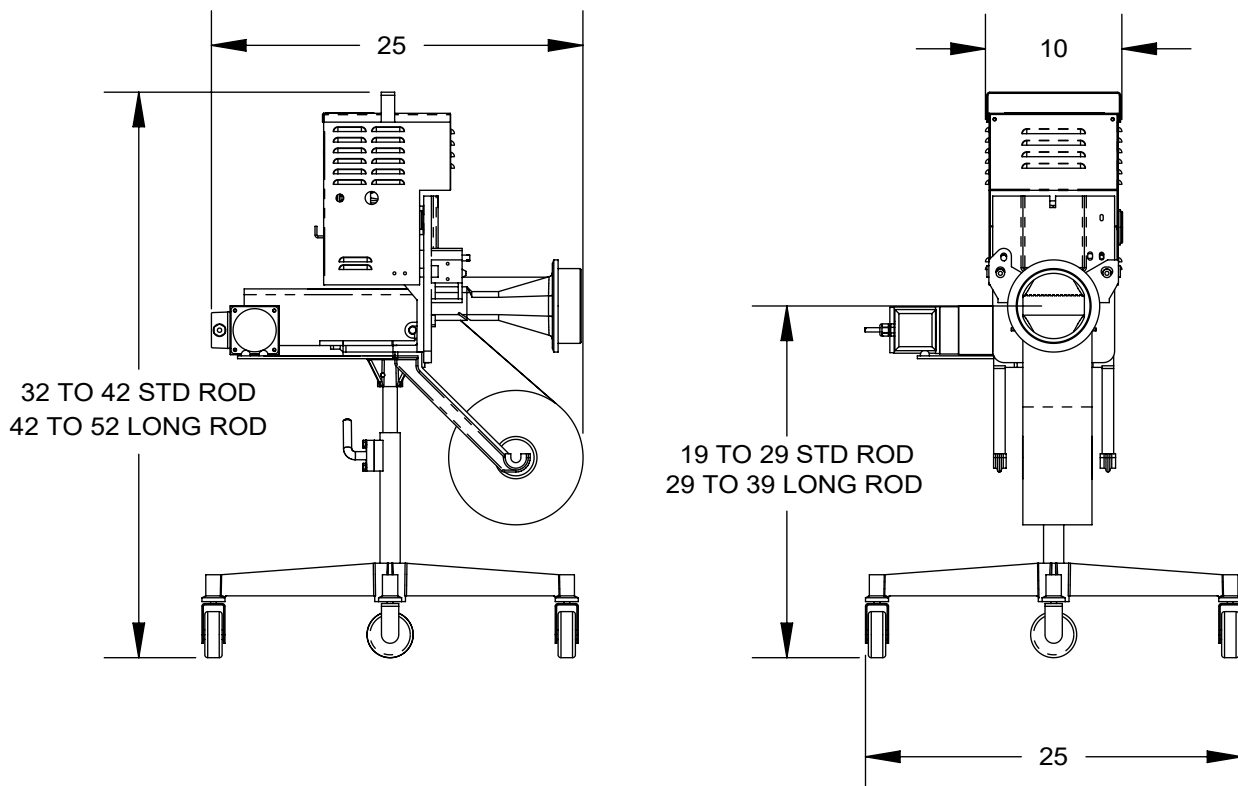
MOTORS: 115 VOLT, 60 CYCLE, 1 PHASE, 2.5 AMP
220 VOLT, 50 CYCLE, 1 PHASE, 1.2 AMP

OVERALL DIMENSIONS: LENGTH: 25 INCHES
WIDTH: 10 INCHES - POWER UNIT
25 INCHES - STAND

HEIGHT (ADJUSTABLE): 32" TO 42" STANDARD ROD STAND
42" TO 52" LONG ROD STAND

HEIGHT CENTER FORMING DIE: 19 TO 29 INCHES STD. ROD, STAND
29 TO 39 INCHES LONG ROD, STAND

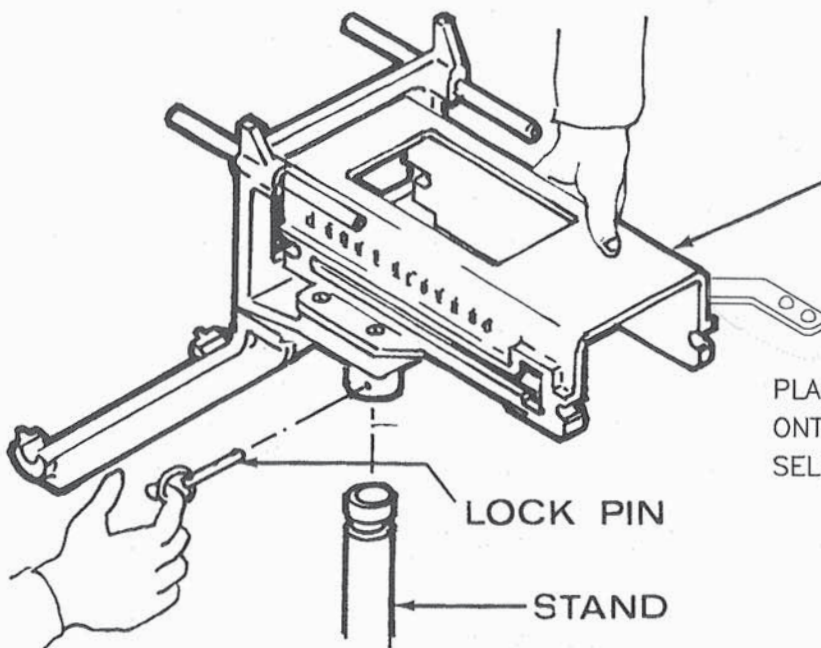
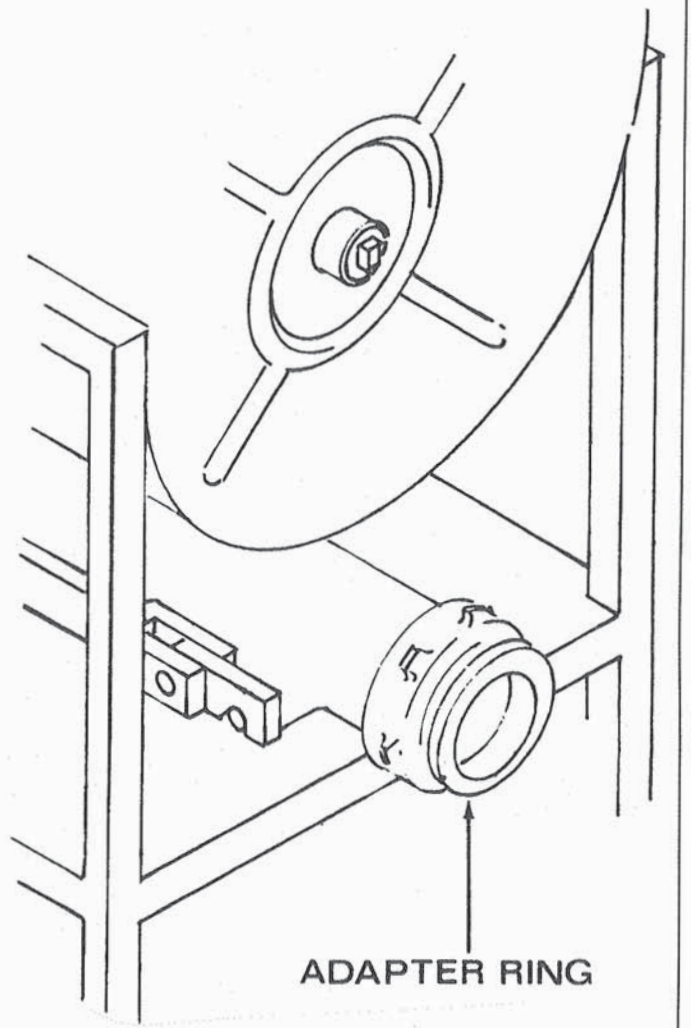
WEIGHT: 40 LBS.
67 LBS. (WITH STAND)



ASSEMBLY

MAKE SURE GRINDER IS NOT
PLUGGED INTO POWER SUPPLY.
ASSEMBLE GRINDER HEAD WITH
WORM, KNIFE AND PLATE.
SECURE WITH ADAPTER RING.

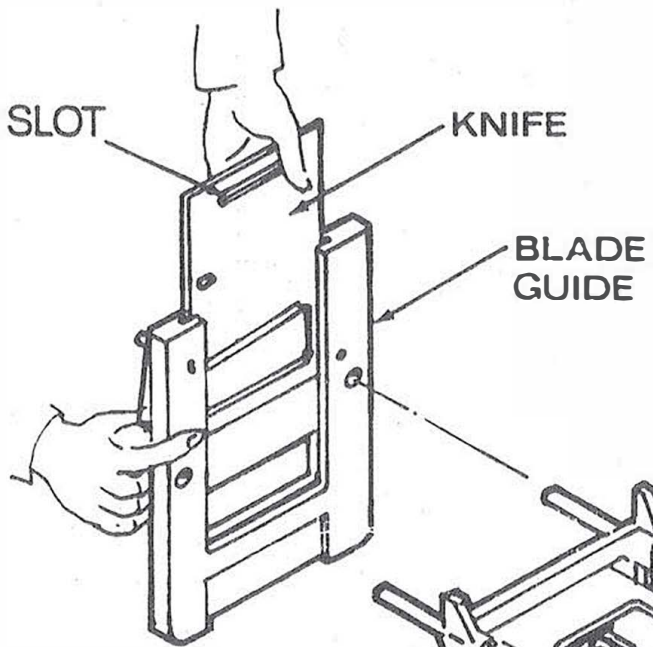
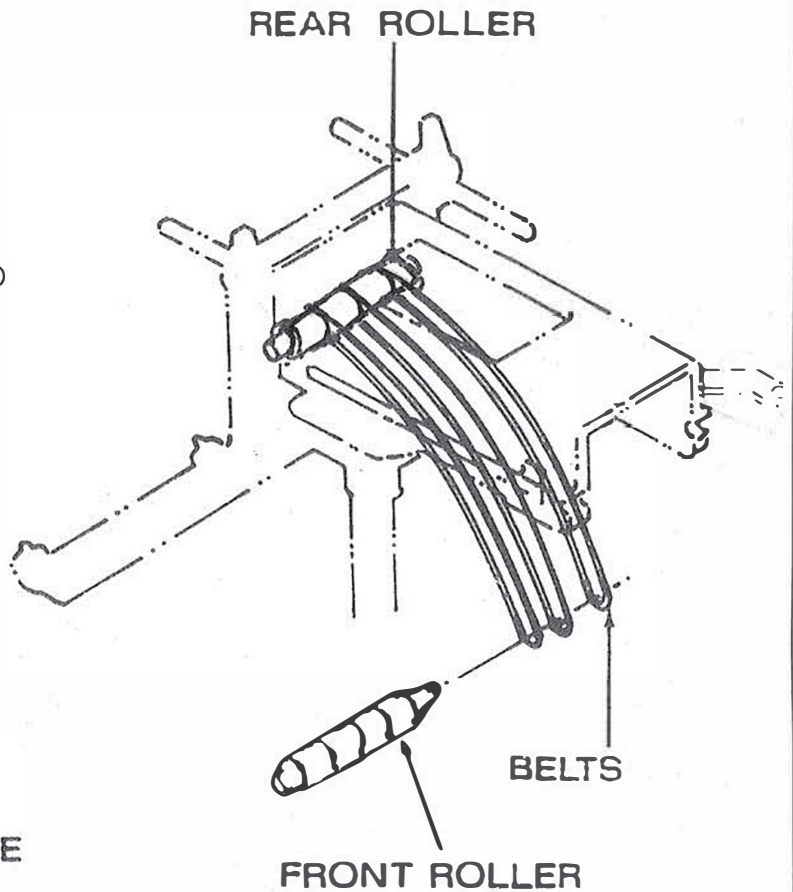
CAUTION: NEVER ASSEMBLE,
DISSEMBLE OR
SERVICE BULKER WITH
POWER CORD PLUGGED
INTO POWER SUPPLY.



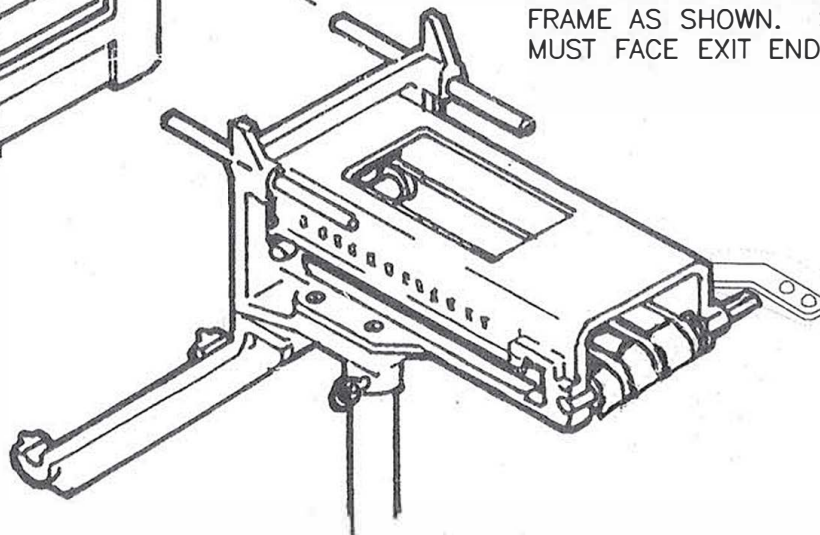
CONVEYOR FRAME
ASSEMBLY

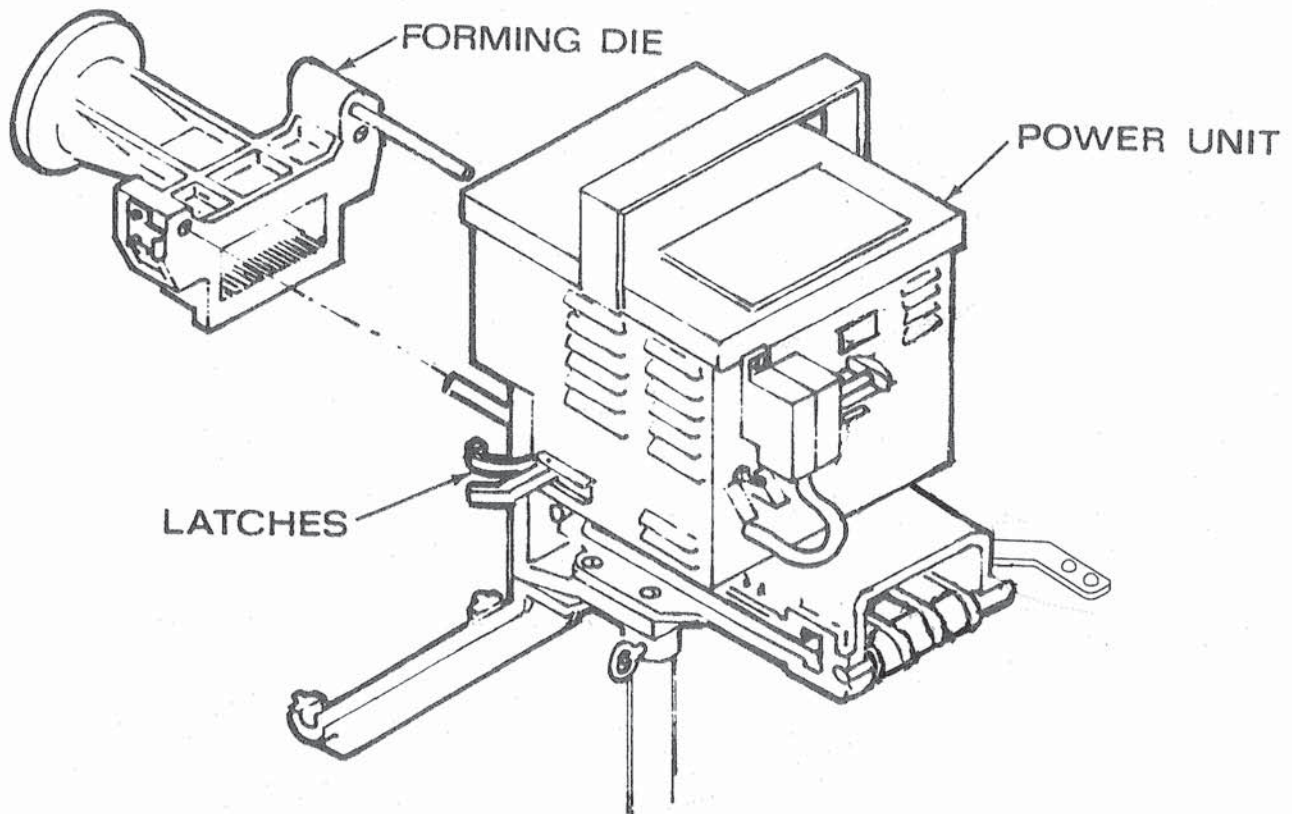
PLACE CONVEYOR FRAME ASSEMBLY
ONTO STAND; SECURE WITH
SELF-LOCKING QUICK RELEASE PIN.

PLACE CONVEYOR BELTS ON SMALL DIAMETER REAR ROLLER AND PLACE ROLLER INTO NOTCHES AT REAR OF CONVEYOR FRAME. NOTE: SPACING OF CONVEYOR BELTS IS UNEQUAL — THE CLEARANCE BETWEEN THE LEFT SIDE OF FRAME AND BELT SHOULD BE GREATER THAN ON THE RIGHT SIDE. WITH THE BELTS EXTENDED TO FRONT OF FRAME, SLIP BELTS ONTO SMALL DIAMETER PORTION OF DRIVE ROLLER. NOTE: SQUARE END DRIVE ROLLER SHAFT MUST BE TO RIGHT. PLACE SHAFT INTO NOTCHES AT FRONT OF CONVEYOR. STRETCHING BELTS, PLACE THEM INTO GROOVES ON FRONT AND REAR ROLLERS.



SLIDE KNIFE INTO BLADE GUIDE. PRESS RELEASE PIN TO ALLOW KNIFE PAST LOCK PIN, THEN RELEASE. WHEN KNIFE IS IN PROPER POSITION, LOCK PIN WILL ENGAGE KNIFE HOLDING IT IN POSITION FOR ENGAGEMENT OF POWER UNIT CRANK ARM. SLIP KNIFE AND GUIDE ONTO PINS EXTENDING FROM CONVEYOR FRAME AS SHOWN. SLOT IN KNIFE MUST FACE EXIT END OF CONVEYOR.

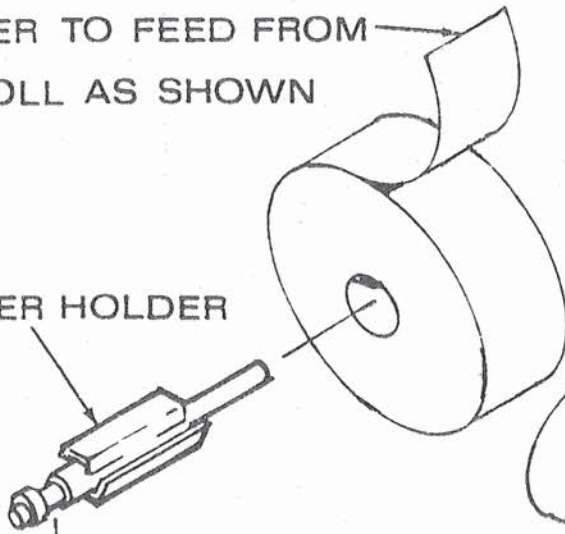




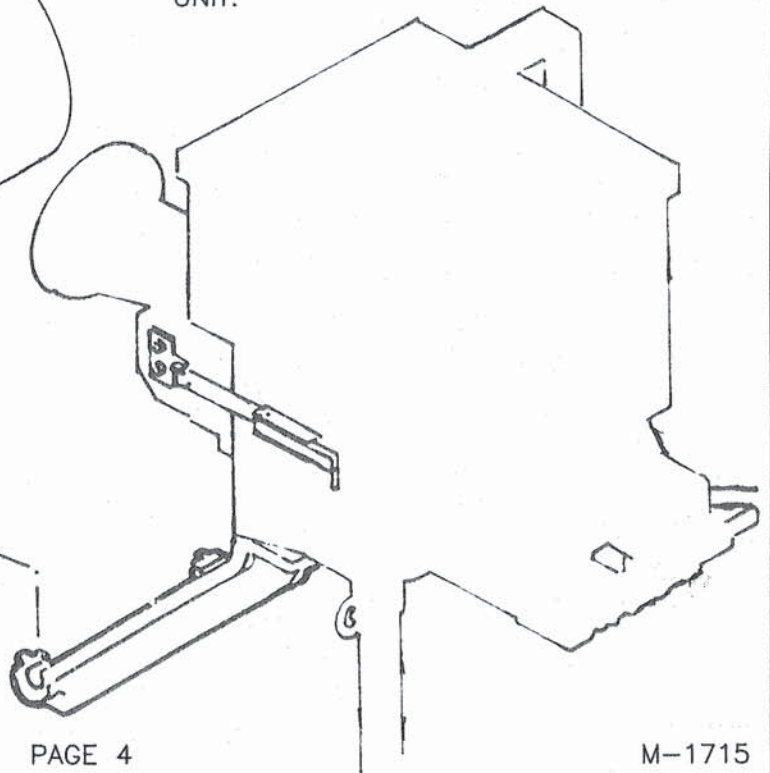
PAPER TO FEED FROM
ROLL AS SHOWN

SLIDE POWER UNIT ONTO PINS FROM
OPPOSITE SIDE OF KNIFE. SLIDE
FORMING DIE ONTO PINS AND CLAMP
DIE, KNIFE GUIDE, CONVEYOR FRAME
AND POWER UNIT TOGETHER WITH
LATCHES ON EACH SIDE OF POWER
UNIT.

PAPER HOLDER



SLIP PAPER ROLL ONTO PAPER
HOLDER AS SHOWN. PLACE PAPER
AND HOLDER INTO PAPER SUPPORT.

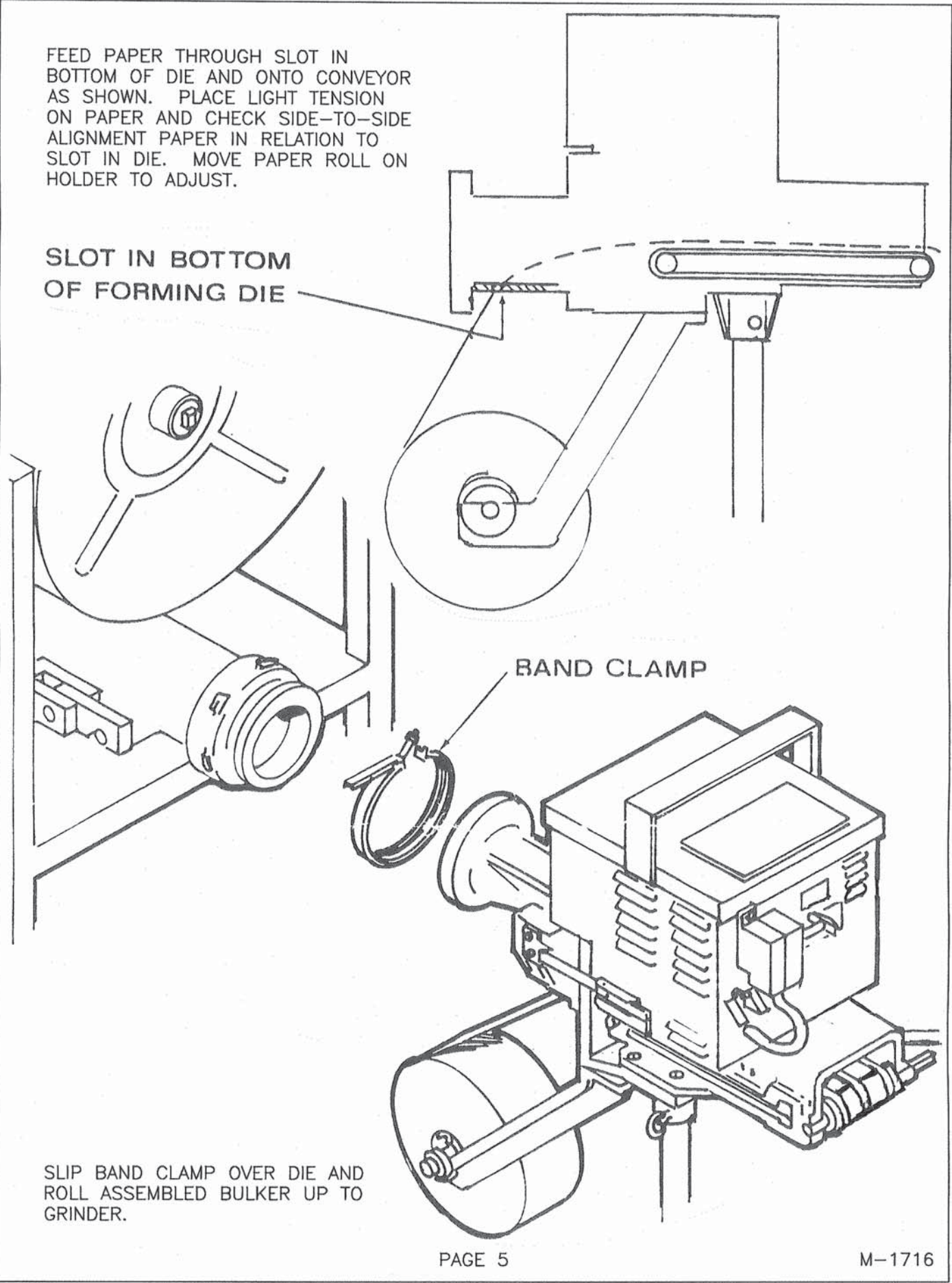


FEED PAPER THROUGH SLOT IN BOTTOM OF DIE AND ONTO CONVEYOR AS SHOWN. PLACE LIGHT TENSION ON PAPER AND CHECK SIDE-TO-SIDE ALIGNMENT PAPER IN RELATION TO SLOT IN DIE. MOVE PAPER ROLL ON HOLDER TO ADJUST.

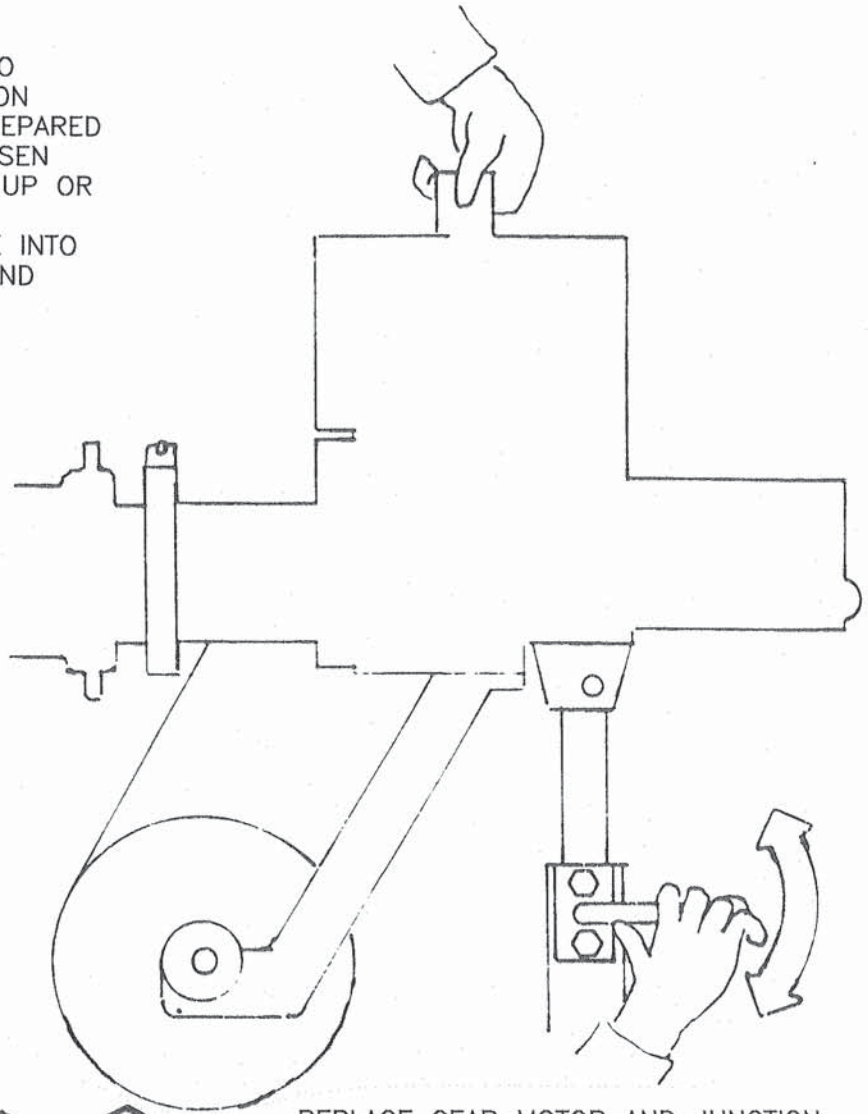
SLOT IN BOTTOM OF FORMING DIE

BAND CLAMP

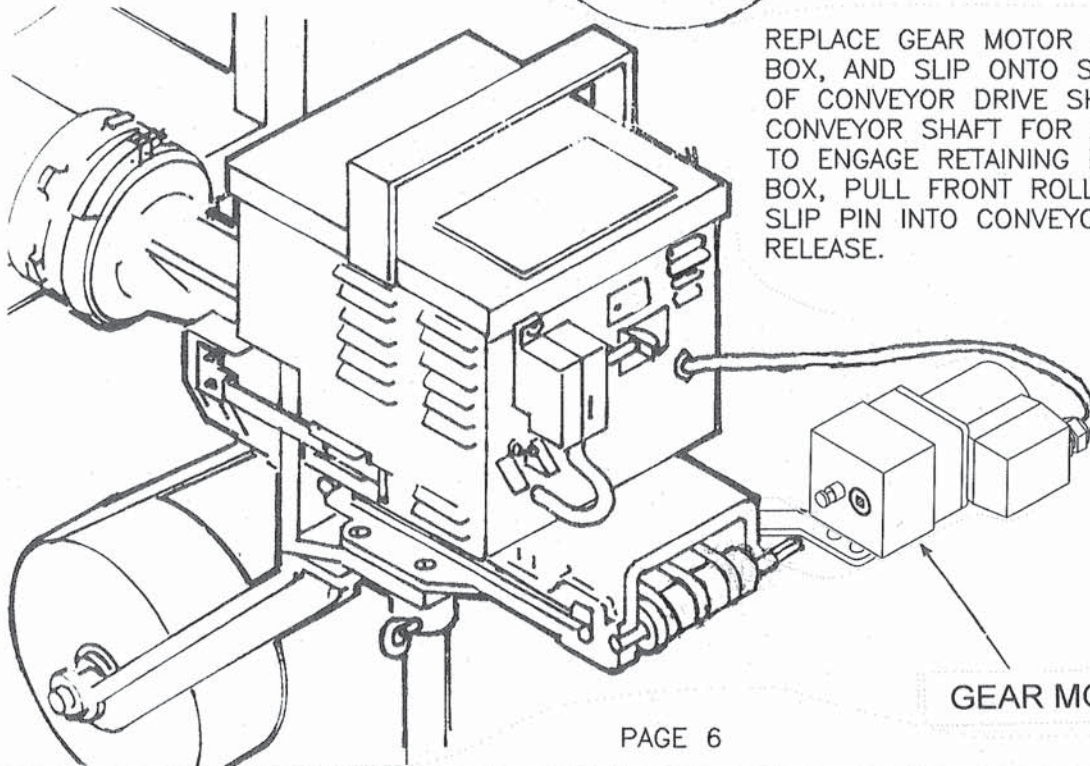
SLIP BAND CLAMP OVER DIE AND ROLL ASSEMBLED BULKER UP TO GRINDER.



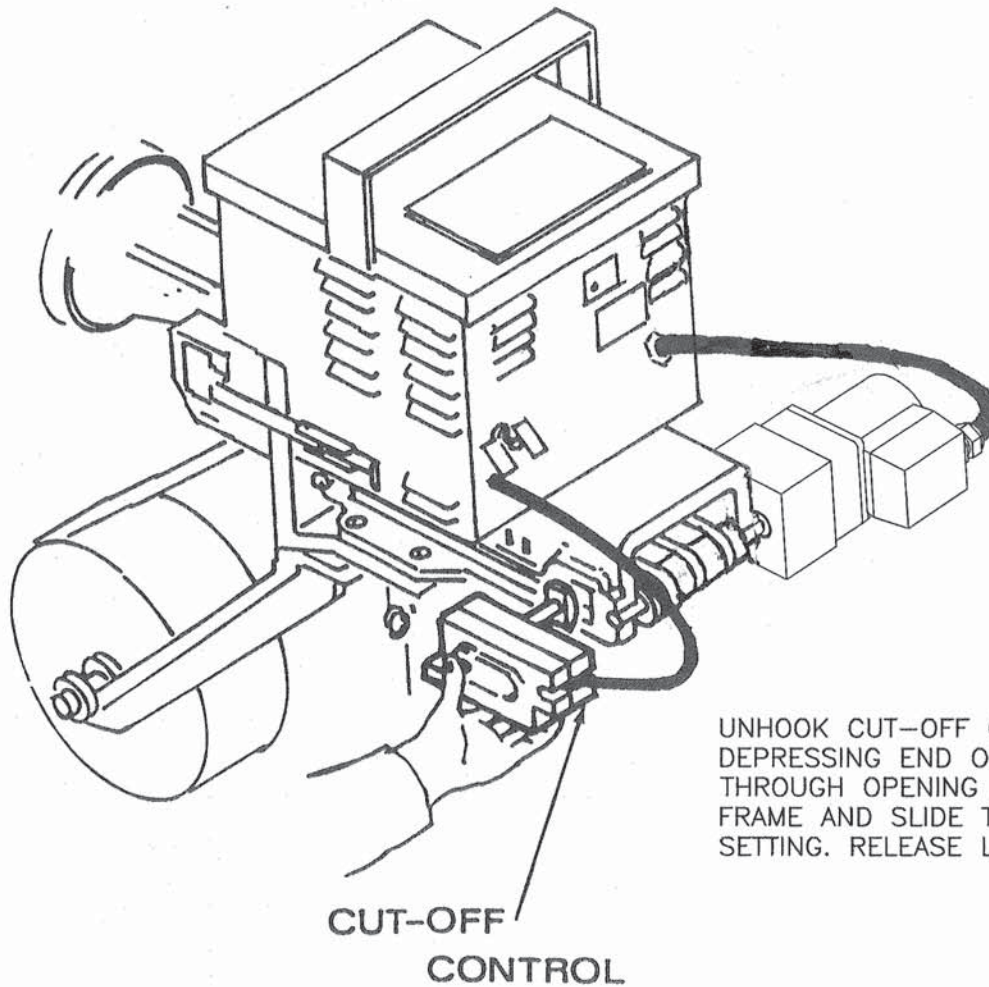
ADJUST HEIGHT OF BULKER TO GRINDER. HOLDING HANDLE ON POWER UNIT, CAUTION: BE PREPARED FOR WEIGHT OF BULKER, LOOSEN CLAMP ON STAND AND MOVE UP OR DOWN TO CORRECT HEIGHT. RETIGHTEN CLAMP. SLIDE DIE INTO ADAPTER RING ON GRINDER AND SECURE WITH BAND CLAMP.



REPLACE GEAR MOTOR AND JUNCTION BOX, AND SLIP ONTO SQUARE END OF CONVEYOR DRIVE SHAFT. ROTATE CONVEYOR SHAFT FOR ALIGNMENT. TO ENGAGE RETAINING PIN ON GEAR BOX, PULL FRONT ROLLER FORWARD, SLIP PIN INTO CONVEYOR FRAME AND RELEASE.

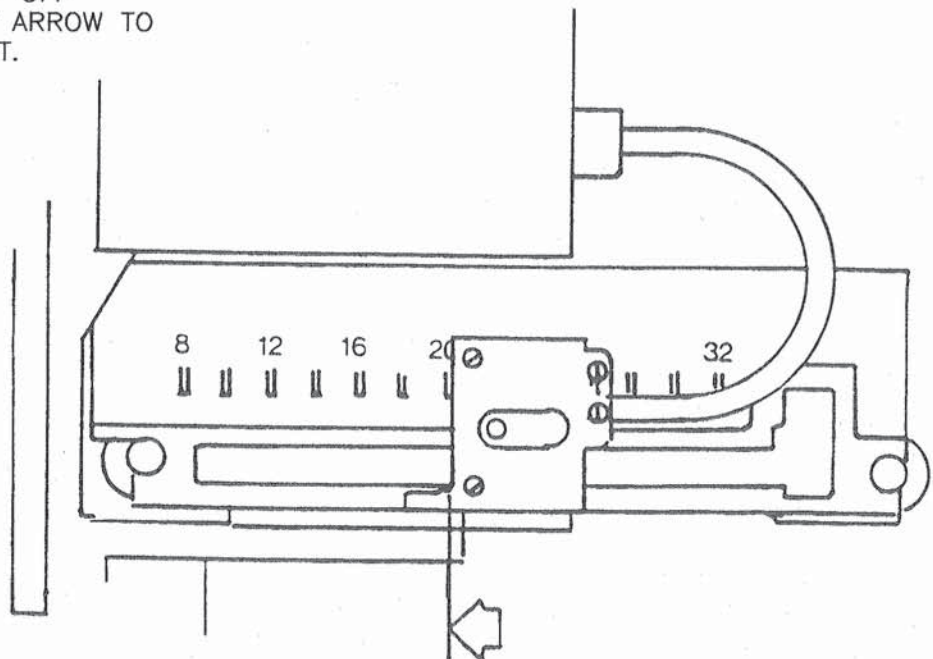


GEAR MOTOR



UNHOOK CUT-OFF CONTROL AND DEPRESSING END OF LOCK PIN, SLIP THROUGH OPENING IN CONVEYOR FRAME AND SLIDE TO DESIRED SETTING. RELEASE LOCK PIN.

USE THE EDGE OF CUT-OFF CONTROL INDICATED BY ARROW TO SELECT PORTION WEIGHT.



*** * * READ PRIOR TO DISASSEMBLY AND CLEANING * * ***
OF ANY HOLLYMATIC EQUIPMENT

HOLLYMATIC EQUIPMENT CLEANING AND SANITIZING PROCEDURE

WARNING: ALWAYS DISCONNECT THE MACHINE FROM ITS POWER SOURCE BEFORE PERFORMING THE CLEANING OPERATION.

CAUTION: TAKE CARE WITH HOT WATER SO AS NOT TO BURN YOURSELF OR OTHERS WHEN CLEANING.

CAUTION: Strictly follow the cleaning and disinfectant chemical manufacturer's directions with regards to dilutions, exposure times and preventive measures to observe when making up, using and disposing these solutions. Failure to do so may result in damage to machine components.

CAUTION: It is strongly recommended that protective gloves be worn when using cleaning detergents, disinfectants and during the whole cleaning process.

- A. CLEAN AND DEGREASE THE PARTS USING ANY APPROVED DETERGENT FOR FOOD EQUIPMENT, FOR EXAMPLE –

Eco-Lab—Oasis 133-All Purpose Cleaner and Degreaser Concentrate:

- B. RINSE THE PARTS THOROUGHLY AFTER DEGREASING, USING POTABLE WARM WATER [120 – 140°F]

- C. SANITIZE AND STERILIZE THE PARTS USING ANY APPROVED DISINFECTANT FOR FOOD EQUIPMENT, FOR EXAMPLE –

Eco-Lab-Ster-Bac or Ster-Bac Blue concentrate:

- D. DRY THE PARTS:

Using an approved sterilized cloth, dry all parts after exposure to the Sanitizing solution for recommended length of time [1 minute for the above sanitizer], so there is no standing water on the part surfaces.

- E. APPLY HOLLY FLUID:

Apply Holly Fluid to all the outside surfaces of the sanitized parts for longer life.

CAUTION: BEFORE CONNECTING TO POWER, MAKE SURE HANDS ARE CLEAR AND SWITCH IS OFF.

USING 3-WIRE GROUNDED EXTENSION CORD
PLUG INTO 115V, 1PH, 60HZ POWER SUPPLY.
(ALSO 220V, 1PH, 50HZ ON 220V UNITS).

CONNECT MEAT GRINDER TO PROPER POWER SUPPLY.
PLACE SELECTOR IN "GRIND" POSITION.

NOTE: IT IS RECOMMENDED TO OPERATE GRINDER
WITH FOOT SWITCH.

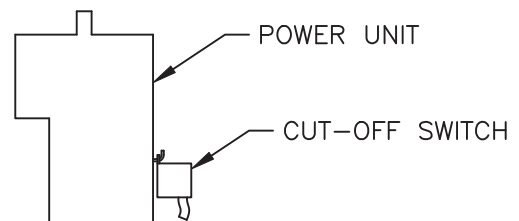
BULKING

TURN ON BULKER. TURN ON GRINDER. THE BULKER AUTOMATICALLY PORTIONS LOAF OF MEAT TO SET WEIGHT. CHECK FIRST FEW PORTIONS FOR WEIGHT. (WEIGHT CAN VARY DUE TO FAT CONTENT, ADDITIVES, ETC.) MOVE ADJUSTOR (WITH GRINDER AND BULKER TURNED OFF) TO OBTAIN DESIRED WEIGHT PER PORTION. BULKER IS NOW READY FOR CONTINUOUS OPERATION.

DISASSEMBLY

CAUTION: UNPLUG GRINDER AND BULKER FROM POWER SUPPLY.
REMOVE PAPER ROLL AND STORE IN A DRY AREA.

BEFORE BULKER IS DISASSEMBLED, REMOVE CONVEYOR DRIVE GEAR MOTOR FROM CONVEYOR. DISENGAGE CUT-OFF SWITCH FROM CONVEYOR FRAME AND HANG ON THE HOOK ON THE POWER UNIT.



DISASSEMBLE IN REVERSE ORDER OF ASSEMBLY.

NOTE: TO REMOVE BLADE, PRESS PIN ON BLADE LOCK TO RELEASE

CAUTION: BLADE IS SHARP. USE CARE WHEN HANDLING.

CLEAN-UP

ALL PARTS EXCEPT POWER UNIT MAY BE WASHED IN A SINK. USE HOT WATER.

CAUTION: DO NOT USE STEAM CLEANER ON BULKER PARTS.
DAMAGE MAY RESULT.
POWER UNIT: WIPE EXTERIOR CLEAN.
DO NOT USE HOSE OR IMMERSE IN WATER.

SERVICE

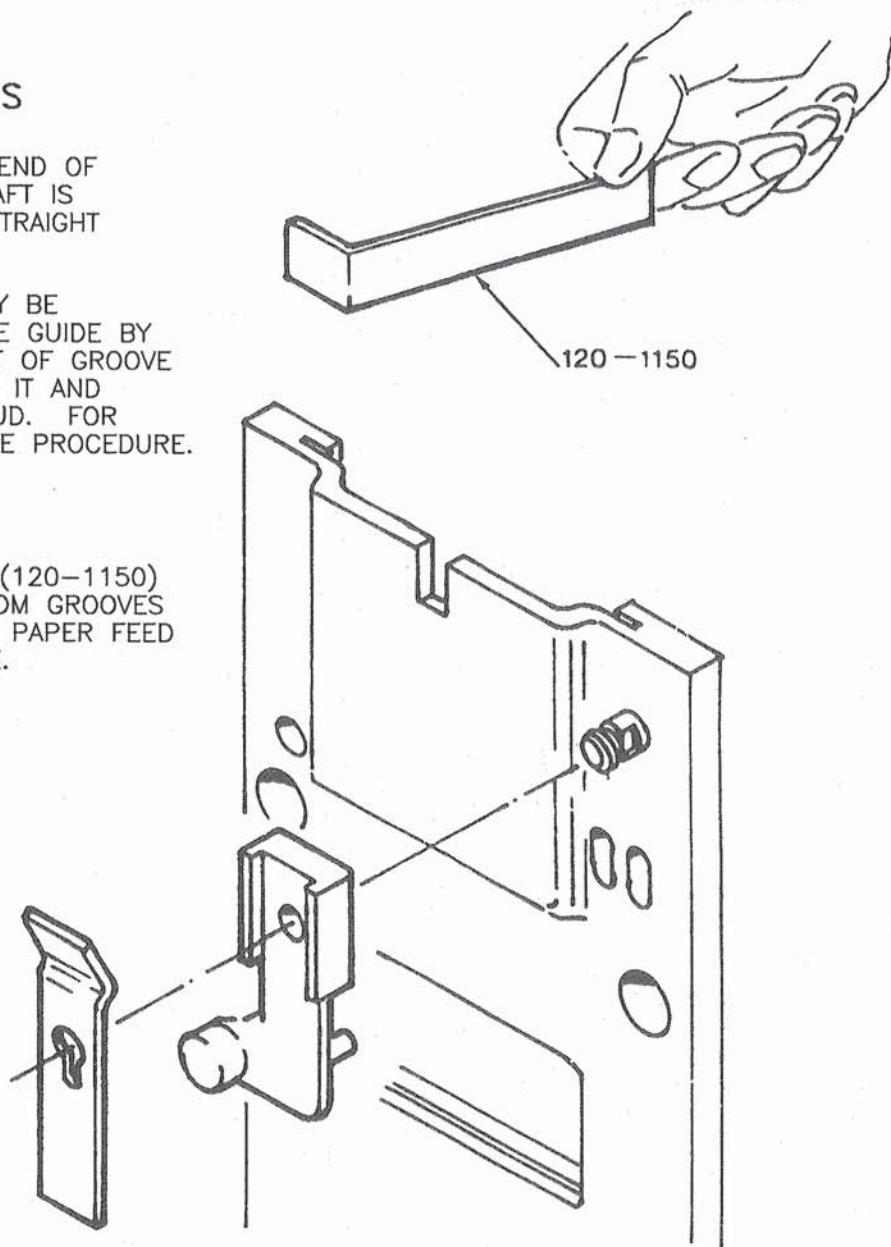
NOTE: THE HOLLYMATIC BULKER REQUIRES NO LUBRICATION, EXCEPT FOR A VERY SMALL AMOUNT OF HOLLY LUBE ON CONVEYOR ROLLER SHAFTS. WHEN THE BLADE BECOMES DULL, SHARPEN AS REQUIRED.

CLEANING NOTES

THE TRIP LEVER ON END OF CUT-OFF SWITCH SHAFT IS REMOVABLE--PULL STRAIGHT OFF SHAFT.

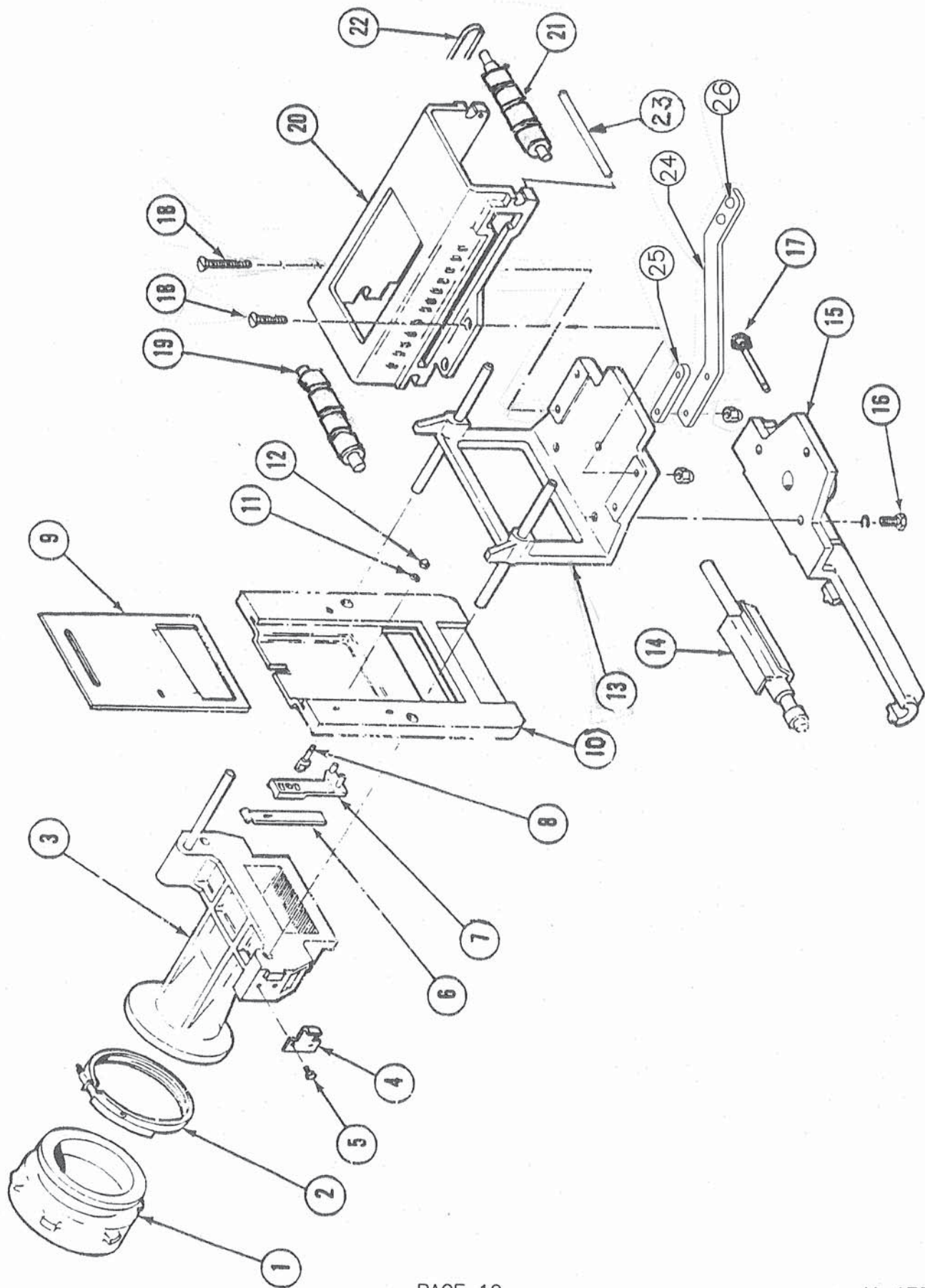
THE BLADE LOCK MAY BE REMOVED FROM KNIFE GUIDE BY PUSHING SPRING OUT OF GROOVE IN STUD AND LIFTING IT AND BLADE LOCK OFF STUD. FOR REASSEMBLY, REVERSE PROCEDURE.

USE CLEANING TOOL (120-1150) TO REMOVE MEAT FROM GROOVES IN KNIFE GUIDE, AND PAPER FEED SLOT IN FORMING DIE.



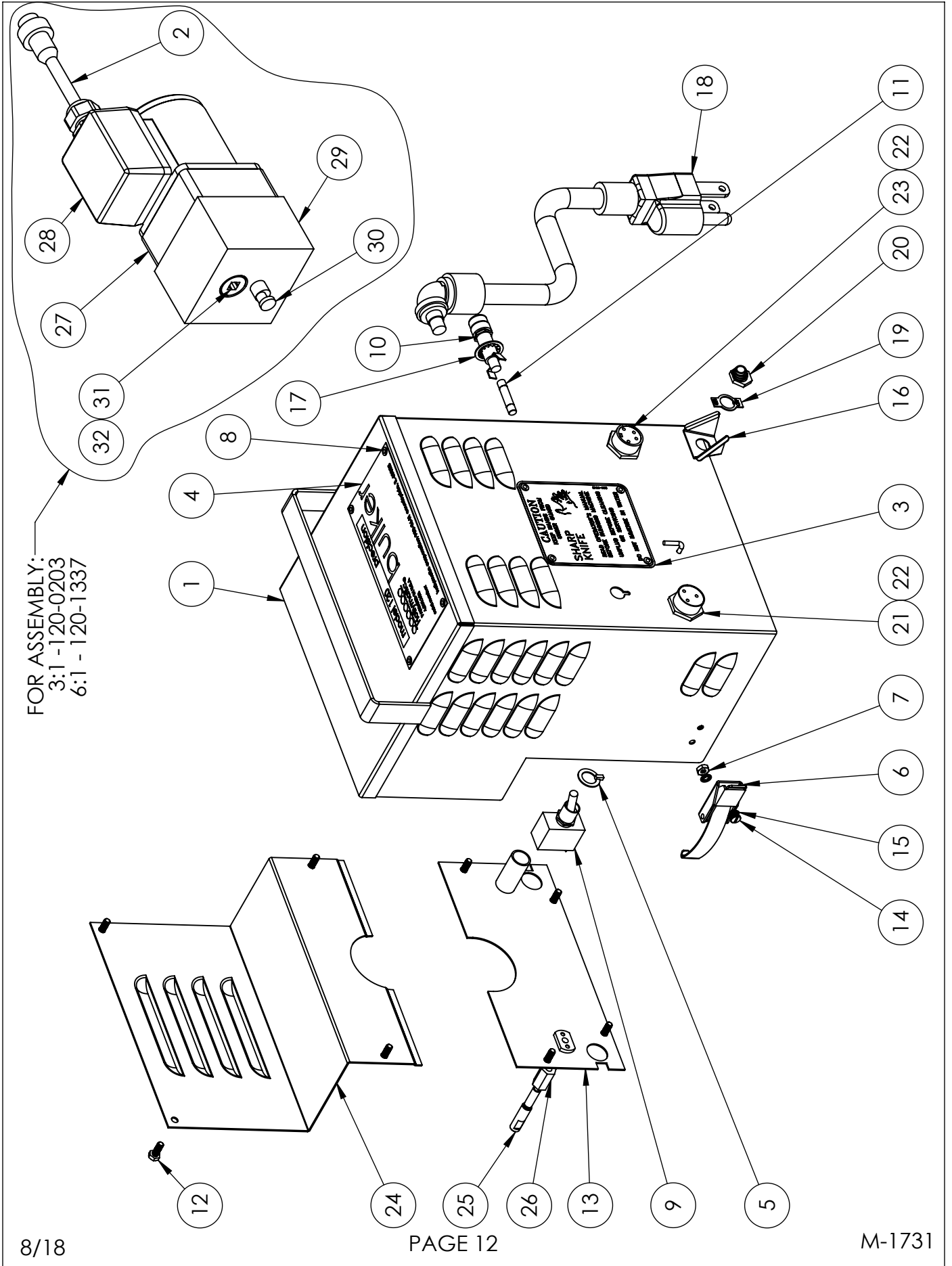
120-1232 CONVEYOR DRIVE GEAR MOTOR

IN ORDER TO INCREASE THE LIFE AND PERFORMANCE OF THE CONVEYOR DRIVE, WE RECOMMEND REMOVING THE GEAR MOTOR FROM THE POWER UNIT BEFORE WASHING DOWN THE CONVEYOR FRAME. STORE THE GEAR MOTOR IN A DRY PLACE.



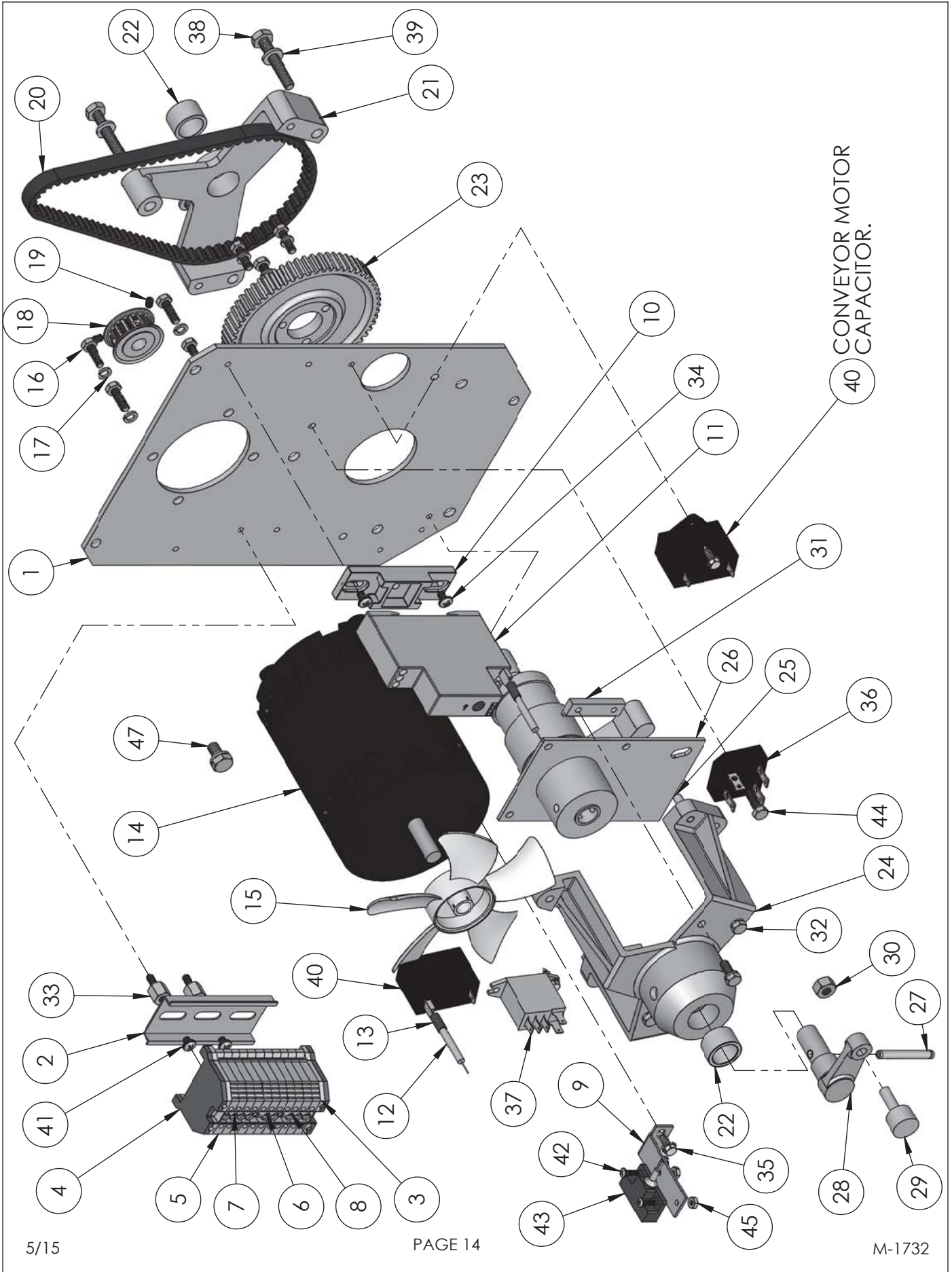
ITEM	QUANTITY	PART NO.
1 ADAPTER-#42 HOLLYMATIC	1	120-0045
ADAPTER-#52 HOLLYMATIC	1	120-0046
ADAPTER #42 BIRO	1	120-1107
ADAPTER #52 BIRO	1	120-1108
ADAPTER-#42 B.B.	1	120-1105
ADAPTER-#52 B.B.	1	120-1106
ADAPTER-#42 HOBART	1	120-1109
ADAPTER-#52 HOBART	1	120-1110
2 CLAMP-RETAINER	1	120-0065
3 DIE-FORMING ASSEMBLY	1	120-0062 - INCLUDES: (2) - 120-0064 (KEEPER)
	1	
4 KEEPER	2	120-0064
5 SCREW	4	120-0119
6 SPRING	1	120-1137
7 LOCK-BLADE	1	120-1136
8 STUD	1	120-1138
9 BLADE	1	120-0068
10 GUIDE-BLADE	1	120-0036
11 WASHER	1	675-0864
12 NUT	1	120-1139
13 SHEAR FRAME	1	120-1171
14 PAPER ROLL-HOLDER	1	120-0069
15 SUPPORT-PAPER ROLL	1	120-0026
16 BOLT ASST.	3	120-0066
17 LOCKPIN	1	120-1198
18 BOLT ASST.	1	120-1356
19 ROLLER-REAR	1	120-0004
20 FRAME-CONVEYOR	1	120-0002
21 ROLLER-FRONT	1	120-0005
22 BELT-CONVEYOR	3	120-0076
23 CROSS PIN	1	120-1208
24 CONVEYOR MOTOR BRACKET ASSEMBLY	1	120-1357
25 CONVEYOR MOTOR BRACKET SPACER	1	120-1353
26 BUMPER	2	120-1355 - INCLUDED WITH 120-1357
27 DISC MAGNET	1	120-1381

FOR ASSEMBLY:
 3:1 - 120-0203
 6:1 - 120-1337

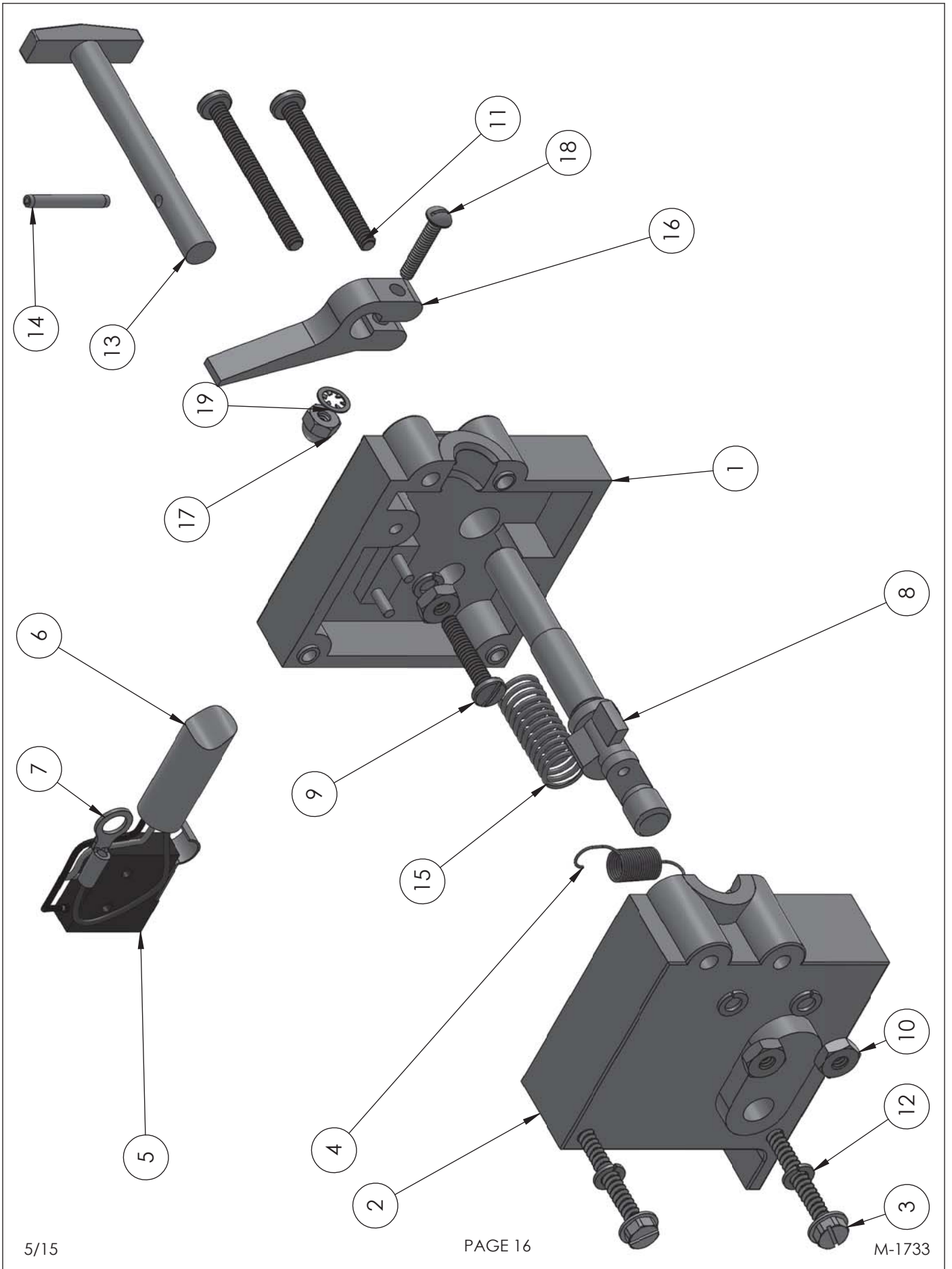


ITEM	QTY.	DESCRIPTION	PART NO.	
1	1	ENCLOSURE WELDMENT	120-1181	
2	1	PLUG & CORD	120-1358	
3	1	CAUTION LABEL	900-0640	
4	1	BULKER LABEL	900-0641	
5	1	RING LOCK	120-1079	
6	2	DRAW LATCH	120-0063	
7	2	BOLT ASS'T. - LATCH	120-0121	
8	8	POP RIVET FOR 1/8" WORK THICKNESS	100-0149	
9	1	"ON-OFF" SWITCH	120-0018	
10	1	FUSE HOLDER	680-2150	
11	1	GLASS TUBE 4 AMPERE FUSE	120-0075	
12	8	#10-32 X 1/2 HHCS	723040223	
13	1	BOTTOM COVER ASS'Y.	120-1182	
14	2	#8-32 x 1/4 PAN HEADED SCREW	712021640	
15	2	#8 INTERNAL LOCKWASHER	752000640	
16	1	GUARD FOR ON-OFF TOGGLE	2586	
17	1	1/2" INT. TEETH L/W	758100640	
18	1	115V POWER CORD ASSY	120-0080	*
19	1	"ON - OFF" Indicator PLT.	120-1080	
20	1	SEAL FOR TOGGLE SWITCH	500-1167	
21	1	TRIGGER RECEPTACLE & LEADS ASSEMBLY	120-1209	*
22	2	DRIVE NUTS - 1/2" NOM.	400-1150	
23	1	RECEPTACLE & LEADS ASSEMBLY	120-1360	
24	1	TOP COVER	120-1185	
25	1	STUD	120-1152	
26	1	LOCKNUT	120-1153	
27	1	GEARHEAD 6:1 GEARHEAD 3:1	120-1333 120-0201	
28	1	MOTOR, INDUCTION 110/115V, 1 PH, 60 HZ	120-1332	
29	1	BRACKET MOTOR MOUNT	120-1331	
30	1	PIN, MOTOR MOUNT	120-1338	
31	1	COUPLER, CONVEYOR DRIVE	120-1334	
32	1	#8-32 X 1/4 SET SCREW	712023640	

* SEE PAGE 20 FOR DETAILS



ITEM NO.	DESCRIPTION	QTY.	PART NO.
1	MOUNTING PLATE	1	120-0169
2	DIN RAIL 3" LG	1	120-1379
3	GROUNDING BLOCK COVER YELLOW	2	120-1373
4	GROUNDING TERMINAL BLOCK	2	120-1372
5	TERMINAL BLOCK GRAY	11	120-1369
6	2 POLE TERMINAL JUMPER	1	120-1366
7	4 POLE TERMINAL JUMPER	1	120-1368
8	3 POLE TERMINAL JUMPER	1	120-1367
9	MOUNTING BRACKET (SAFETY SWITCH)	1	120-0011
10	ADAPTER FOR ONE SHOT TIMER	1	120-1370
11	ONE SHOT TIMER	1	120-1371
12	WIRE, WHITE	2	120-0086
13	STA-KON FEMALE DISCONNECT	2	879-1274
14	MOTOR 115V 60 HZ	1	120-0132
15	MOTOR FAN	1	120-1236
16	#10-32 X 5/8 H.H.C.S	7	723050223
17	#10 SPLIT LOCKWASHER	11	753000591
18	PULLEY-DRIVE	1	120-1345
19	SET SCR. 8-32 X 1/4	2	712024599
20	TIMING BELT	1	120-0008
21	BRACKET - FRONT CLUTCH	1	120-1132
22	CLUTCH BEARING	2	120-0147
23	SPROCKET-DRIVEN	1	120-0007
24	BRACKET -REAR CLUTCH	1	120-1133
25	DOWEL PIN 3/16 X 3/4	2	763062040
26	WARNER CLUTCH FOR 115/220 V.A.C.	1	120-0015
27	ROLLPIN 3/16 X 1-1/2	1	763141691
28	CRANK ARM	1	120-0013
29	CAM FOLLOWER	1	120-0010
30	LOCKNUT	1	99638A200
31	TOE CLAMP	2	120-1143
32	#10-24 X 1/2 HHCS	4	713040223
33	MALE-FEMALE THREADED HEX STANDOFF #8-32 THREAD	2	120-1380
34	8-32 x 1/4 LG PAN HEAD PHILIPS MACHINE SCREW	2	712024630
35	SEMS - THREAD CUTTING	5	120-1248
36	RECTIFIER 400 V	1	120-1375
37	RELAY	1	270-0132
38	1/4-20 X 1-1/2 H.H.C.S	3	714140253
39	1/4 SPLIT LOCKWASHER	3	754000591
40	GEARMOTOR CAPACITOR - 5 μ F	2	120-1364
41	#8-32 X 3/16 LG PAN HEAD PHILIPS MACHINE SCREW	2	712054630
42	#4-40 X 3/8" LG. PAN HEAD PHILIPS SCREW	2	120-1117
43	PROX SENSOR - MAGNETIC	1	480-1541
44	#10-32 X 5/8 LG HHCS SS	1	723050240
45	#4-40 HEX. NUT	2	120-0110
46	#4 INTERNAL LOCKWASHER - SWITCH	2	120-0109
47	SEMS (CHASSIS MTG)	1	120-1247



ITEM NO.	DESCRIPTION	QTY.	PART NO.
1	SWITCH BOX	1	120-1144
2	COVER - SWITCH BOX	1	120-1145
3	SCREW - SWITCH BOX	2	120-1147
4	EXTENSION SPRING	1	120-1157
5	MICRO SWITCH FOR TRIGGER	1	120-1376
6	CORD FOR TRIGGER SWITCH	1	120-1378
7	WIRE TERMINAL	1	120-0115
8	CAM SHAFT	1	120-1141
9	SCREW, PAN HD #6-32 X 3/4	1	711061623
10	NUT #6-32	3	731005140
11	#6-32 X 1-1/2 R.H. MACH. SCR.	2	711141440
12	#6 INTERNAL LOCKWASHER	5	751000640
13	LOCK PIN	1	120-1148
14	ROLL PIN (SWITCH BOX)	1	120-1149
15	COMPRESSION SPRING (SWITCH BOX)	1	120-1158
16	TRIP LEVER	1	120-1140
17	ACORN NUT	1	120-1312
18	SCREW	1	120-1313
19	#4 INTERNAL LOCKWASHER - SWITCH	1	120-0109

120-1376 SWITCH ONLY

120-1390 SWITCH-PLUG & CORD ASSY (USA)

120-1209 RECEPTACLE W/LEADS

120-1399 CUT-OFF SWITCH ASSY W/PLUG (USA)

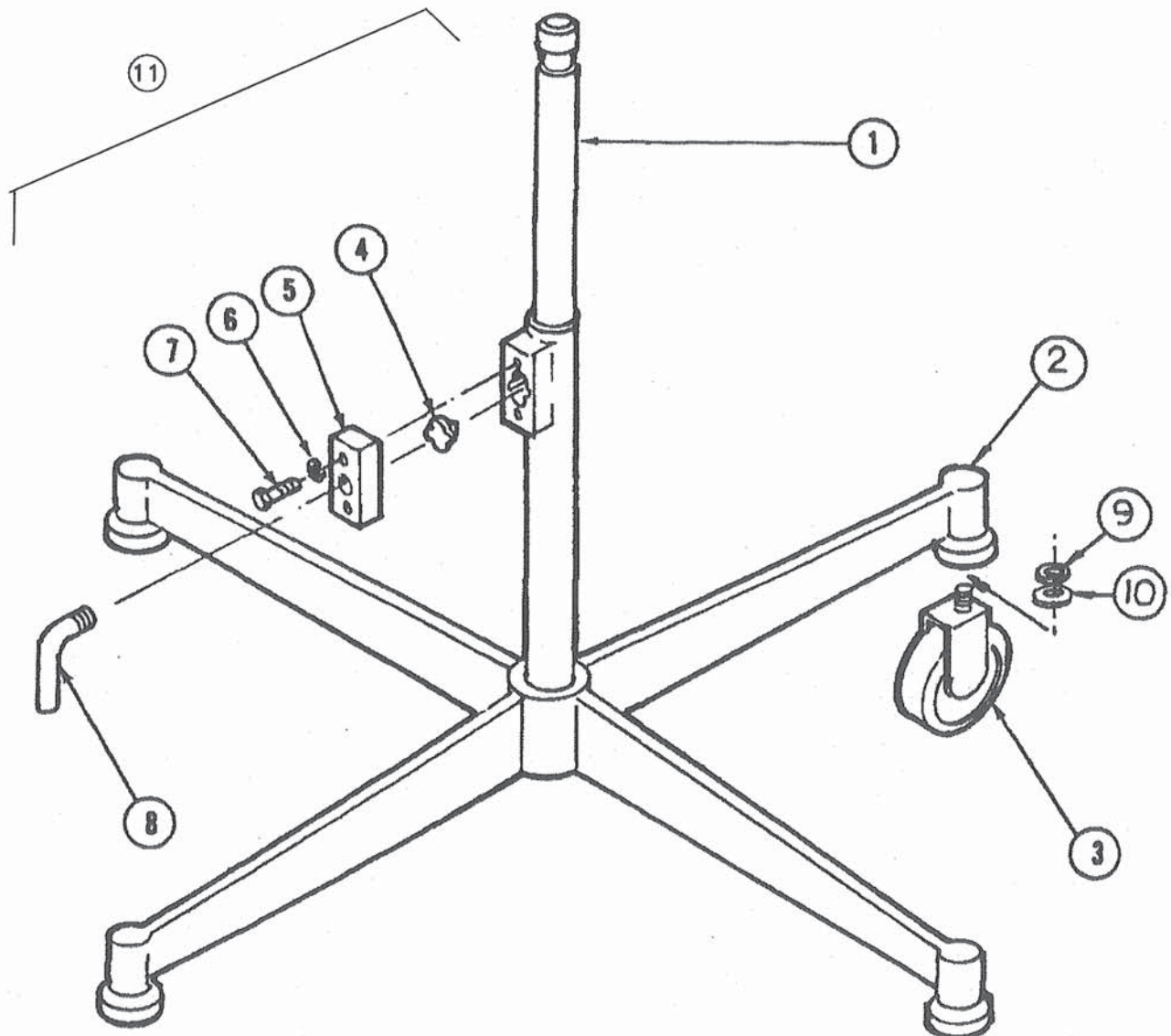
SEE PAGE 20 & 20A FOR ILLUSTRATIONS

ITEM

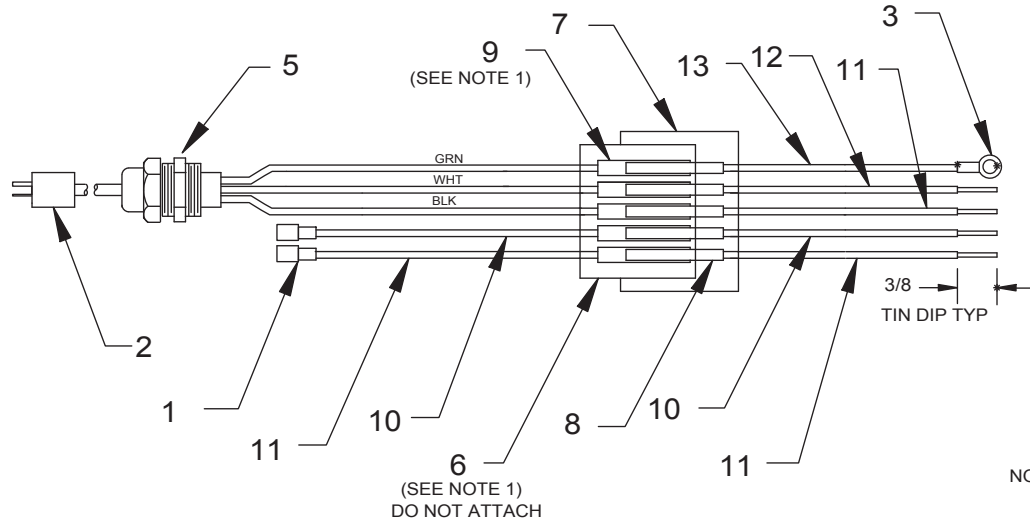
QUANTITY

PART NO.

1	ROD-LONG	1	120-1128
	ROD-SHORT	1	120-1127
2	BASE	1	120-1121
3	CASTER	4	120-1310
4	PAD-LOCK	1	120-1131
5	RETAINER	1	120-1130
6	LOCKWASHER	2	754000540
7	SCREW	2	714100240
8	CLAMP SCREW	1	120-1129
9	LOCK WASHER	4	7560005910
10	FLAT WASHER	4	100-1293
11	BULKER STAND ASSY (INCLUDES ITEMS 1-10)	1	120-1120



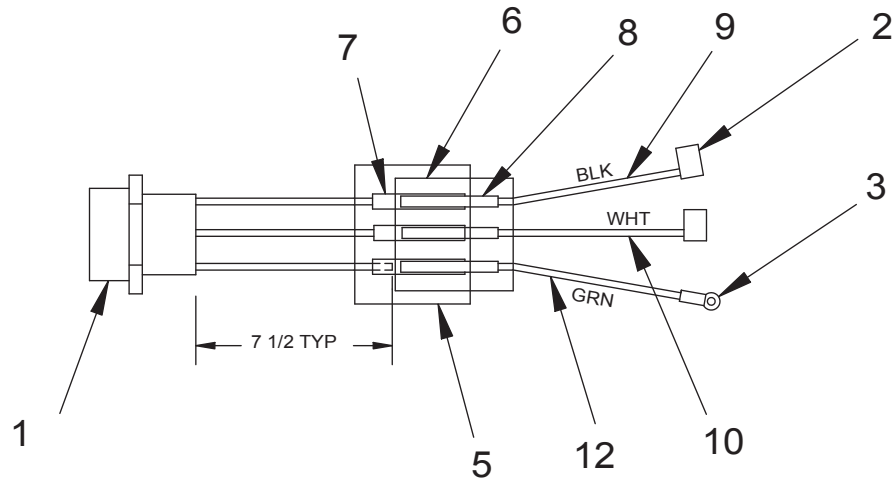
120-0080 POWER CORD ASSEMBLY



13	1	WIRE, GREEN 8 LG	905-1223
12	1	WIRE, WHITE 7 LG	905-1224
11	3	WIRE, BLACK 9 LG	905-1226
10	2	WIRE, RED 9 LG	905-1221
9	5	SOCKET CONNECTOR	120-1297
8	5	PIN CONNECTOR	120-1296
7	1	PLUG, 5 CIRCUIT	120-1295
6	1	RECEPTACLE, 5 CIRCUIT	120-1294
5	1	CORD CONNECTOR W/NUT	260-0042
4			
3	1	WIRE TERMINAL	120-0115
2	1	POWER CORD 115V 230V	120-0175 120-1340
1	2	SPADE CONNECTOR	7746
ITEM	REQD	DESCRIPTION	PART NO.

- NOTE: 1. ASSEMBLE ALL ITEMS EXCEPT ITEM 6. AFTER INSTALLING INTO POWER UNIT #120-0167 FINISH ASSEMBLY WITH ITEM 6.
2. USE A PRO-CRIMPER II MODEL # 90871-1 TO CRIMP PINS & SOCKETS TO WIRE LEADS.

120-1209 RECEPTACLE & LEADS ASSEMBLY

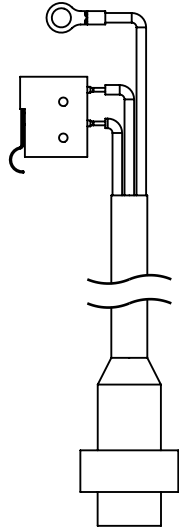


NOTES:

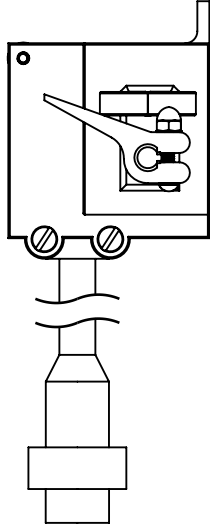
- ITEMS 1, 5 & 7 NOT USED FOR CANADA. SEE #120-1159 SWITCH-CORD ASSY.
- USE A PRO-CRIMPER II MODEL # 90871-1 TO CRIMP PINS & SOCKETS TO WIRE LEADS.

10	1	WIRE, WHITE 7 1/2 LG	905-1224
9	1	WIRE, BLACK 7 1/2 LG	905-1226
8	3	PIN CONNECTOR	120-1296
7	3	SOCKET CONNECTOR	120-1297
6	1	RECEPTACLE, 4 CIRCUIT	120-1292
5	1	PLUG, 4 CIRCUIT	120-1293
4	1	WIRE, GREEN 7 1/2 LG	905-1223
3	1	RING TERMINAL	120-0115
2	2	FLAG TERMINAL	200-0805
1	1	3-PIN RECEPTICAL	120-1377
ITEM	REQD	DESCRIPTION	PART NO.

CUT-OFF SWITCH & CORD ASSEMBLIES



120-1390
SWITCH-PLUG & CORD ASSY



120-1399
CUT-OFF SWITCH ASSY

NOTE: ATTACH THIS PLUG #120-1293 AFTER INSTALLING INTO POWER UNIT



HOLLYMATIC CORPORATION 600 E. PLAINFIELD ROAD COUNTRYSIDE, IL 60525 Telephone: (708) 579-3700