



CATALOG OF REPLACEMENT PARTS

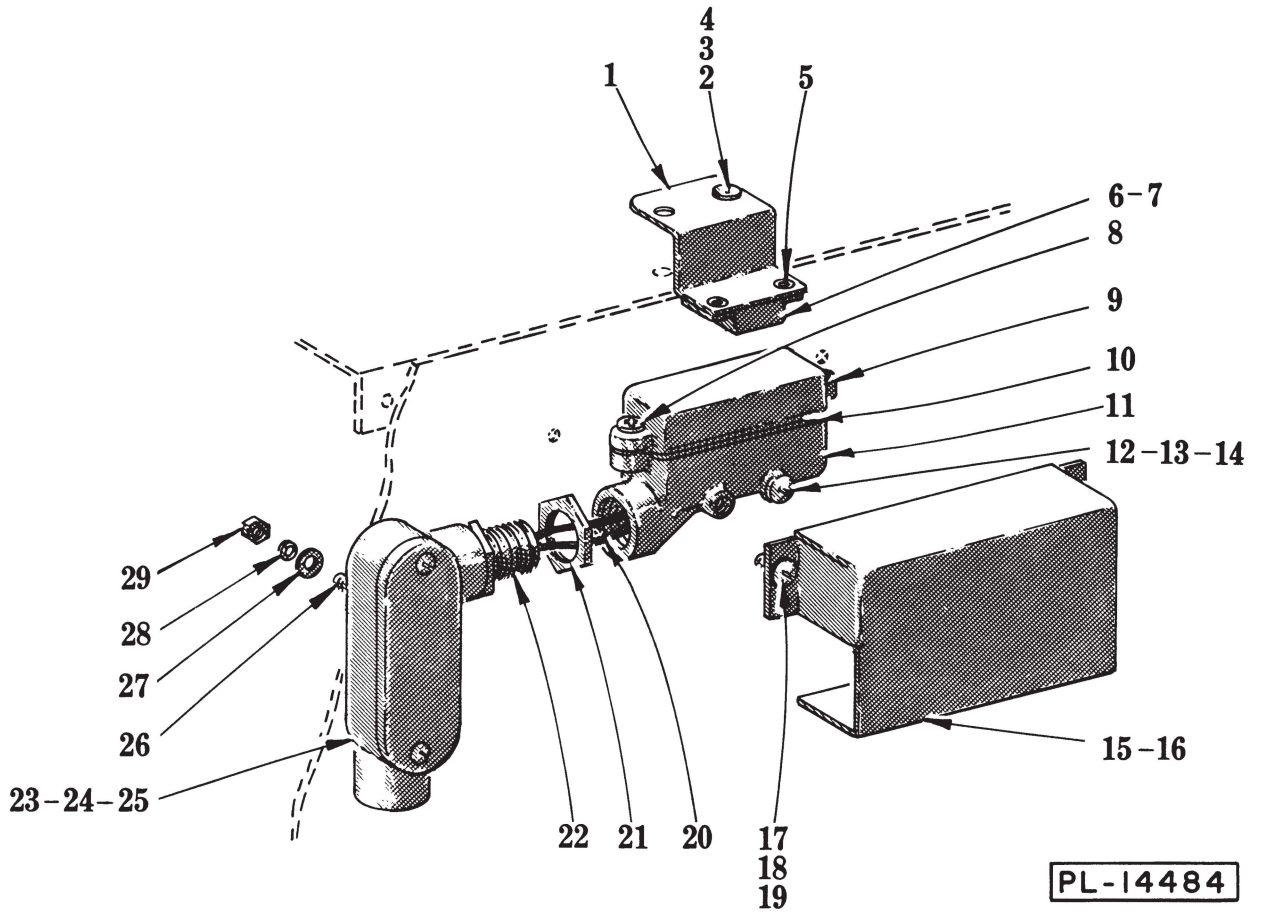


MODELS
W-26, W-38 & W-59
WATERPRESSES

FOOD SERVICE ENGINEERED
WASTE EQUIPMENT SYSTEMS

WATERPRESS

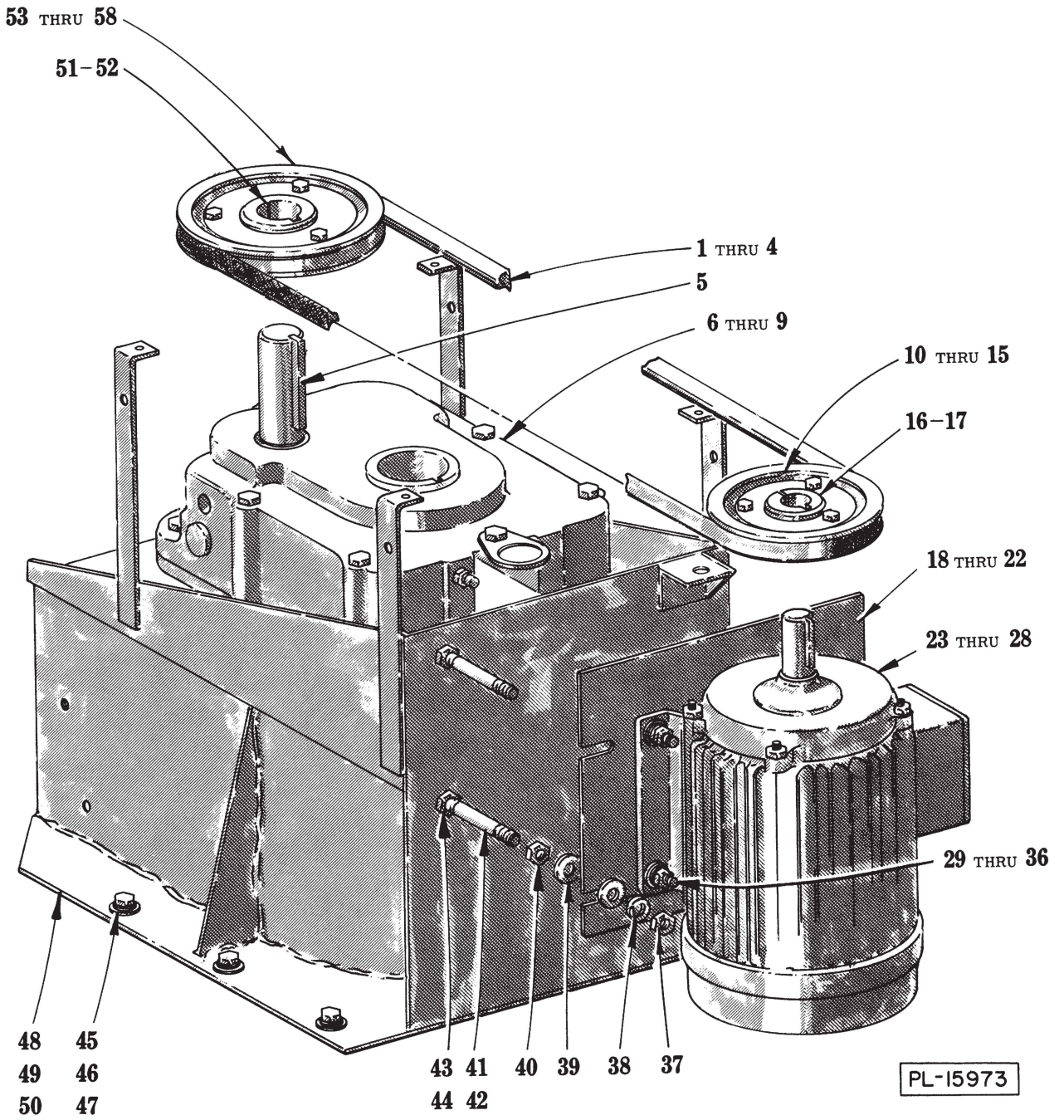
ML		MODEL	OPERATION
ML-35072	W-26	W/2 H.P. Pump Set	L-R
ML-35074	W-26	W/2 H.P. Pump Set	R-L
ML-35076	W-26	W/3 H.P. Pump Set	L-R
ML-35078	W-26	W/3 H.P. Pump Set	R-L
ML-35080	W-26	W/5 H.P. Pump Set	L-R
ML-35082	W-26	W/5 H.P. Pump Set	R-L
ML-35084	W-38	W/2 H.P. Pump Set	L-R
ML-35086	W-38	W/2 H.P. Pump Set	R-L
ML-35088	W-38	W/3 H.P. Pump Set	L-R
ML-35090	W-38	W/3 H.P. Pump Set	R-L
ML-35092	W-38	W/5 H.P. Pump Set	L-R
ML-35094	W-38	W/5 H.P. Pump Set	R-L
ML-35096	W-59	W/5 H.P. Pump Set	L-R
ML-35098	W-59	W/5 H.P. Pump Set	R-L



SAFETY SWITCH UNIT

SAFETY SWITCH UNIT

ILLUS. PL-14484	PART NO.	NAME OF PART	AMT.
1	B-222918-1	Clip - Mounting	1
2	SC-21-22	Mach. Screw - #10-24 x 3/8" Rd. Hd	2
3	WL-6-7	Lock Washer - #10 Medium	2
4	NS-11-18	Mach. Nut - #10-24 Hex	2
5	RS-30-8	Rivet - 1/8" Domed Hd	2
6	A-223304	Retainer - Magnet	1
7	B-111941	Magnet	1
8	SD-25-12	Self-Tapping Screw - #8-18 x 1/2" Phil. Pan Hd. "Shakeproof"	2
9	B-114922	Switch & Cover Assy	1
10	B-106803	Gasket	1
11	D-109366	Housing - Safety Switch	1
12	SC-98-5	Mach. Screw - #10-24 x 1-1/2" Rd. Hd	2
13	WL-6-7	Lock Washer - #10 Medium	2
14	NS-11-18	Mach. Nut - #10-24 Hex	2
15	B-222919-1	Box - Reed Switch (Std. Chute)	1
16	B-223000-1	Box - Reed Switch (Thru Wall Chute)	1
17	SC-21-14	Mach. Screw - #8-32 x 3/8" Rd. Hd	3
18	WL-6-1	Lock Washer - #8 Light	3
19	NS-11-12	Mach. Nut - #8-32 Hex	3
20	B-223039	Wire & Terminal Assy	2
21	FE-6-7	Lock Nut - 1/2" Conduit	2
22	FE-22-12	Nipple - 1/2" x 1-1/8" Lg. (T.B.E.)	1
23	B-222921-1	Unilet (Type "LL")	1
24	FE-4-18	Cover - Unilet	1
25	FE-8-35	Gasket	1
26	SC-21-22	Mach. Screw - #10-24 x 3/8" Rd. Hd	2
27	WS-28-8	Washer	2
28	WL-6-7	Lock Washer - #10 Medium	2
29	NS-11-18	Mach. Nut - #10-24 Hex	2
	C-222916	Reed Switch Sub-Assy. (Incls. items #8, 9, 10, 11 & 20 thru 25)	1
	B-222917	Magent & Mounting Clip Assy. (Incls. items #1, 5, 6 & 7)	1



TRANSMISSION UNIT

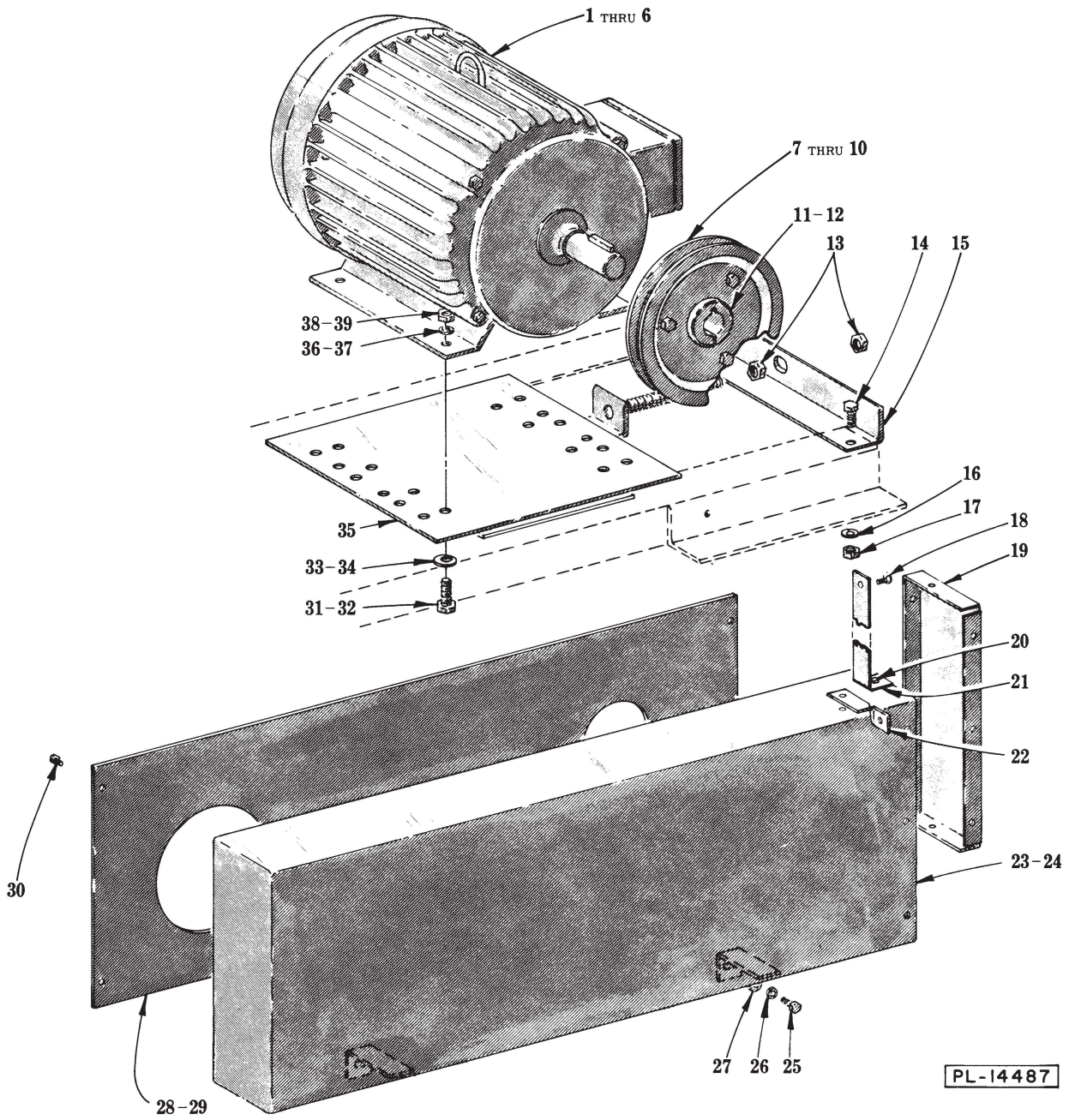
TRANSMISSION UNIT

ILLUS. PL-15973	PART NO.	NAME OF PART	AMT.
*1	BV-13-7	"V" Belt (1-1/2 H.P., 50 Hz.)	1
*2	BV-13-8	"V" Belt (1-1/2 H.P., 60 Hz.)	1
**3	BV-5-4	"V" Belt (3 H.P., 50/60 Hz.)	1
***4	BV-5-4	"V" Belt (5 H.P., 50/60 Hz.)	2
5	B-222271-10	Key	1
* **6	D-223527	Gear Reducer	1
**7	D-223528	Gear Reducer	1
8	SC-37-1	Fin. Bolt - 1/2"-13 x 1-1/2" Hex Hd	4
9	WL-4-13	Lock Washer - 1/2" Medium	4
*10	D-223468-3	Sheave - Motor (1-1/2 H.P., 60 Hz.)	1
*11	D-223468-1	Sheave - Motor (1-1/2 H.P., 50 Hz.)	1
**12	C-223468-2	Sheave - Motor (3 H.P., 60 Hz.)	1
**13	D-223468-4	Sheave - Motor (3 H.P., 50 Hz.)	1
***14	D-223467-3	Sheave - Motor (5 H.P., 60 Hz.)	1
***15	D-223467-1	Sheave - Motor (5 H.P., 50 Hz.)	1
*16	C-223465-2	Hub - Sheave (1-1/2 H.P., 7/8" Dia.) (Incls. key)	1
** ***17	C-223465-1	Hub - Sheave (3 & 5 H.P., 1-1/8" Dia.) (Incls. key)	1
*18	B-216105	Motor Plate Sub-Assy	1
**19	B-216106	Motor Plate Sub-Assy	1
***20	B-216107	Motor Plate Sub-Assy	1
21	WS-28-30	Washer	2
22	PC-3-88	Cotter Pin - 9/64" x 1" Lg	2
*23	D-223462-1	Motor - Drive (1-1/2 H.P.) (200 V., 60 Hz., 3 Ph.)	1
*24	D-223462-2	Motor - Drive (1-1/2 H.P.) (230/460 V., 60 Hz., 3 Ph.; 200 V., 50 Hz., 3 Ph.)	1
**25	D-223463-1	Motor - Drive (3 H.P.) (200 V., 60 Hz., 3 Ph.)	1
**26	D-223463-2	Motor - Drive (3 H.P.) (230/460 V., 60 Hz., 3 Ph.; 200 V., 50 Hz., 3 Ph.)	1
***27	D-223464-1	Motor - Drive (5 H.P.) (200 V., 60 Hz., 3 Ph.)	1
***28	D-223464-2	Motor - Drive (5 H.P.) (230/460 V., 60 Hz., 3 Ph.; 200 V., 50 Hz., 3 Ph.)	1
*29	SC-36-28	Fin. Bolt - 5/16"-18 x 1-1/4" Hex Hd	4
*30	WS-28-29	Washer	4
*31	WL-3-44	Lock Washer - 5/16" Medium	4
*32	NS-13-11	Full Nut - 5/16"-18 Hex Fin	4
** ***33	SC-36-59	Fin. Bolt - 3/8"-16 x 1-1/2" Hex Hd	4
** ***34	NS-13-22	Full Nut - 3/8"-16 Hex Fin	4
** ***35	WS-6-33	Washer	4
** ***36	WL-4-3	Lock Washer - 3/8" Medium	4
37	NS-15-20	Full Nut - 1/2"-13 Hex Fin	2
38	WL-4-13	Lock Washer - 1/2" Medium	2
39	WS-28-30	Washer	4
40	NS-15-20	Full Nut - 1/2"-13 Hex Fin	2
*41	B-222380-24	Stud - 1/2"-13 x 4-1/4" Lg	2
** ***42	B-222380-3	Stud - 1/2"-13 x 5" Lg	2
43	NS-17-27	Jam Nut - 1/2"-13 Hex Fin	4
44	WL-4-13	Lock Washer - 1/2" Medium	2
45	SC-41-13	Fin. Bolt - 5/16"-18 x 1" Hex Hd	6
46	WL-6-23	Lock Washer - 5/16" Medium	6
47	WS-5-39	Washer	6
*48	C-216095	Discharge Housing Sub-Assy. (Incls. items #41, 43 & 44)	1
**49	C-216096	Discharge Housing Sub-Assy. (Incls. items #42, 43 & 44)	1
***50	C-216097	Discharge Housing Sub-Assy. (Incls. items #42, 43 & 44)	1
* **51	C-223465-1	Hub - Sheave (2 & 3 H.P. Motor, 1-1/8" Dia.) (Incls. item #5)	1
***52	C-223465-4	Hub - Sheave (5 H.P. Motor, 1-1/4" Dia.) (Incls. item #5)	1
*53	D-223468-8	Sheave - Gear Reducer (1-1/2 H.P., 60 Hz.)	1
*54	D-223468-4	Sheave - Gear Reducer (1-1/2 H.P., 50 Hz.)	1
*55	D-223468-7	Sheave - Gear Reducer (3 H.P., 60 Hz.)	1
**56	D-223468-6	Sheave - Gear Reducer (3 H.P., 50 Hz.)	1
***57	D-223467-4	Sheave - Gear Reducer (5 H.P., 60 Hz.)	1
***58	D-223467-2	Sheave - Gear Reducer (5 H.P., 50 Hz.)	1

*Use with W-26.

**Use with W-38.

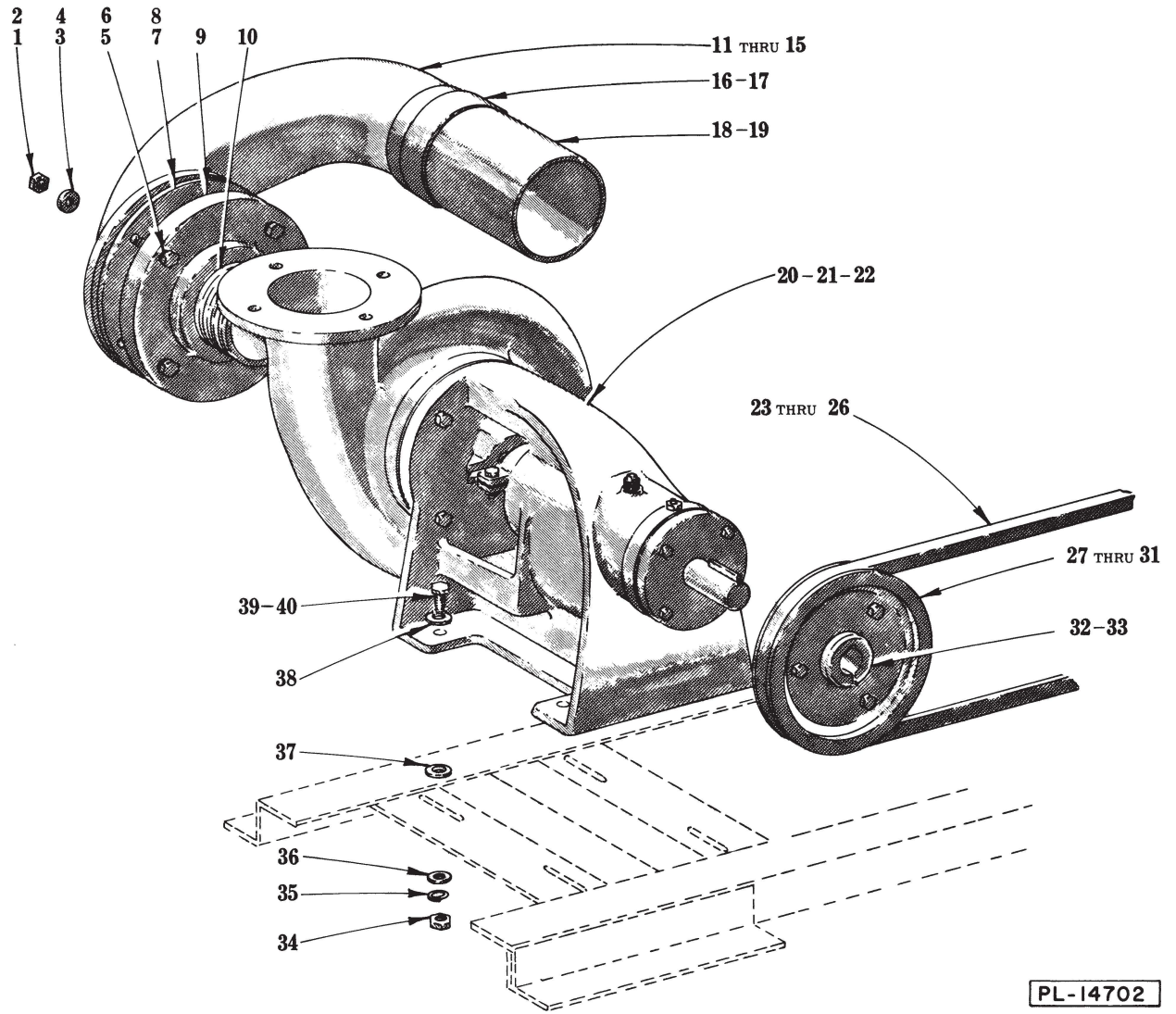
***Use with W-59.



MOTOR UNIT

MOTOR UNIT

ILLUS. PL-14487	PART NO.	NAME OF PART	AMT.
1	D-223462-3	Motor (2 H.P.) (200 V., 60 Hz., 3 Ph.)	1
2	D-223462-4	Motor (2 H.P.) (230/460 V., 60 Hz., 3 Ph.; 200 V., 50 Hz., 3 Ph.)	1
3	D-223463-1	Motor (3 H.P.) (200 V., 60 Hz., 3 Ph.)	1
4	D-223463-2	Motor (3 H.P.) (230/460 V., 60 Hz., 3 Ph.; 200 V., 50 Hz., 3 Ph.)	1
5	D-223464-1	Motor (5 H.P.) (200 V., 60 Hz., 3 Ph.)	1
6	D-223464-2	Motor (5 H.P.) (230/460 V., 60 Hz., 3 Ph.; 200 V., 50 Hz., 3 Ph.)	1
7	D-223468-1	Sheave - Motor (2 H.P., 60 Hz.)	1
8	D-223468-6	Sheave - Motor (3 H.P., 60 Hz.; 2 & 3 H.P., 50 Hz.)	1
9	D-223468-5	Sheave - Motor (5 H.P., 60 Hz.)	1
10	D-223467-4	Sheave - Motor (5 H.P., 50 Hz.)	1
11	C-223465-2	Hub - Sheave (2 H.P.) (7/8" Dia.) (Incls. key)	1
12	C-223465-1	Hub - Sheave (3 & 5 H.P.) (1-1/8" Dia.) (Incls. key)	1
13	NS-13-30	Full Nut - 1/2"-13 Hex Fin	2
14	SC-36-4	Fin. Bolt - 1/4"-20 x 3/4" Hex Hd	2
15	B-222228-1	Angle - Motor Adjustment	1
16	WL-3-37	Lock Washer - 1/4" Medium	2
17	NS-13-1	Full Nut - 1/4"-20 Hex Fin	2
18	SC-21-22	Mach. Screw - #10-24 x 3/8" Rd. Hd	1
19	C-223218-1	End Plate - Belt Guard	1
20	SD-32-1	Self-Tapping Screw - #10-24 x 3/8" Hex Hd., Type F	6
21	B-223200-5	Bracket - Belt Guard (5 H.P.) (W-59)	1
22	B-222431-2	Bracket - Belt Guard (2, 3 & 5 H.P.) (W-26 & W-38)	1
23	C-223216	Guard - Belt (2 H.P.)	1
24	C-223215	Guard - Belt (3 & 5 H.P.)	1
25	SC-36-4	Fin. Bolt - 1/4"-20 x 3/4" Hex Hd	2
26	WL-3-37	Lock Washer - 1/4" Medium	2
27	WS-28-28	Washer	2
28	B-223213-2	Back Plate - Belt Guard (2 H.P.)	1
29	B-223213-1	Back Plate - Belt Guard (3 & 5 H.P.)	1
30	SD-32-1	Self-Tapping Screw - #10-24 x 3/8" Hex Hd., Type F	4
31	SC-36-27	Fin. Bolt - 5/16"-18 x 1" Hex Hd. (2 H.P.)	4
32	SC-36-54	Fin. Bolt - 3/8"16 x 1" Hex Hd. (3 & 5 H.P.)	4
33	WS-28-29	Washer (2 H.P.)	4
34	WS-6-33	Washer (3 & 5 H.P.)	4
35	B-216733	Plate - Motor Adjusting	1
36	WL-3-44	Lock Washer - 5/16" Medium (2 H.P.)	4
37	WL-4-3	Lock Washer - 3/8" Medium (3 & 5 H.P.)	4
38	NS-13-11	Full Nut - 5/16"-18 Hex Fin (2 H.P.)	4
39	NS-13-22	Full Nut - 3/8"-16 Hex Fin. (3 & 5 H.P.)	4

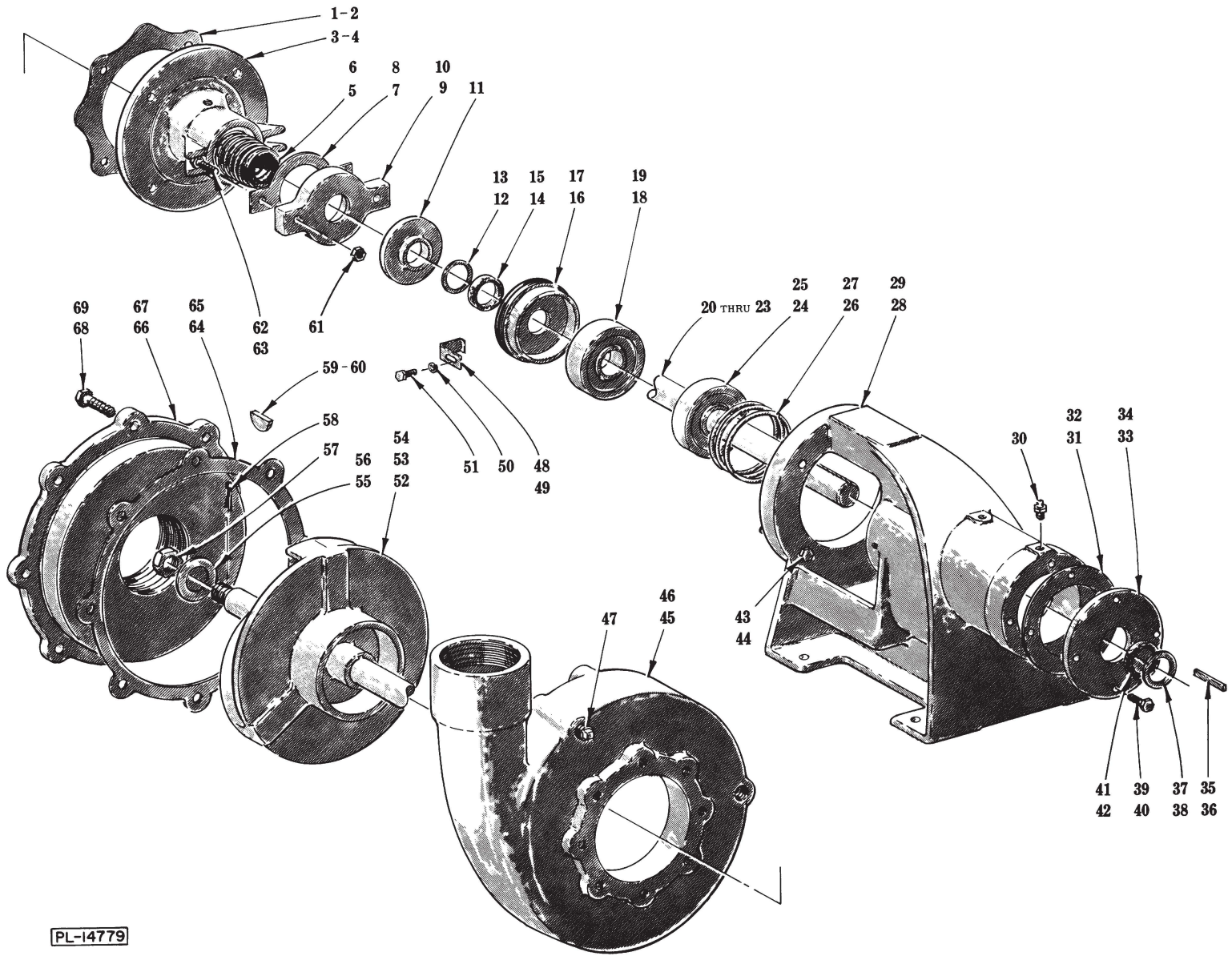


SUCTION LINE AND PUMP UNIT

SUCTION LINE AND PUMP UNIT

ILLUS. PL-14702	PART NO.	NAME OF PART	AMT.
1	NS-15-17	Full Nut - 5/8"-11 Hex Fin. (2 & 3 H.P.)	4
2	NS-15-17	Full Nut - 5/8"-11 Hex Fin. (5 H.P.)	8
3	WS-28-31	Washer (2 & 3 H.P.)	4
4	WS-28-31	Washer (5 H.P.)	8
5	SC-37-30	Fin. Bolt - 5/8"-11 x 1-3/4" Hex Hd. (2 & 3 H.P.)	4
6	SC-37-31	Fin. Bolt - 5/8"-11 x 2" Hex Hd (5 H.P.)	8
7	C-223540	Gasket - 3" Face	1
8	C-223541	Gasket - 4" Face	1
9	C-223537	Flange - Companion (3" N.P.T.) (2 & 3 H.P.)	1
10	FP-70-30	Nipple - 3" x 2-5/8" Lg. (T.B.E.) (2 & 3 H.P.)	1
11	B-216206	Suction Line (2 H.P.)	1
12	B-216210	Suction Line (3 H.P.)	1
*13	B-216208	Suction Line (5 H.P.)	1
**14	B-216212	Suction Line (5 H.P.)	1
***15	B-222758	Suction Line (5 H.P.)	1
*,**16	A-222565-4	Clamp - Hose (2, 3 & 5 H.P.)	1
***17	A-222565-5	Clamp - Hose (5 H.P.)	1
*,**18	B-222392-8	Hose - 3-1/2" x 6" Lg. (2, 3 & 5 H.P.)	1
***19	B-222392-17	Hose - 4-1/2" x 7-1/4" Lg. (5 H.P.)	1
20	E-223489-1	Pump Assy. (2 H.P.)	1
21	E-223489-2	Pump Assy. (3 H.P.)	1
22	E-223490	Pump Assy. (5 H.P.)	1
23	BV-13-3	"V" Belt (2 H.P., 60 Hz.)	1
24	BV-13-4	"V" Belt (3 H.P., 60 Hz.; 2 & 3 H.P., 50 Hz.)	1
25	BV-13-7	"V" Belt (5 H.P., 60 Hz.)	1
26	BV-13-7	"V" Belt (5 H.P., 50 Hz.)	2
27	D-223468-1	Sheave - Pump (2 H.P.) (60 Hz.)	1
28	D-223468-3	Sheave - Pump (2 & 3 H.P.) (50 Hz.)	1
29	D-223468-6	Sheave - Pump (3 H.P.) (60 Hz.)	1
30	D-223468-5	Sheave - Pump (5 H.P.) (60 Hz.)	1
31	D-223467-5	Sheave - Pump (5 H.P.) (50 Hz.)	1
32	C-223465-2	Hub - Sheave (2 & 3 H.P.) (7/8" Dia.) (Incls. key)	1
33	C-223465-3	Hub - Sheave (5 H.P.) (1" Dia.) (Incls. key)	1
34	NS-13-22	Full Nut - 3/8"-16 Hex Fin	4
35	WL-4-3	Lock Washer - 3/8" Medium	4
36	WS-6-33	Washer	4
37	WS-24-1	Washer (Shim) (R. to L. ONLY)	4
38	WS-6-33	Washer	4
39	SC-36-57	Fin. Bolt - 3/8"-16 x 1-1/4" Hex Hd (2 & 3 H.P.)	4
40	SC-36-59	Fin. Bolt - 3/8"-16 x 1-1/2" Hex Hd (5 H.P.)	4

*Use with W-26.
 **Use with W-38.
 ***Use with W-59.



RETURN PUMP UNIT

PL-14779

RETURN PUMP UNIT

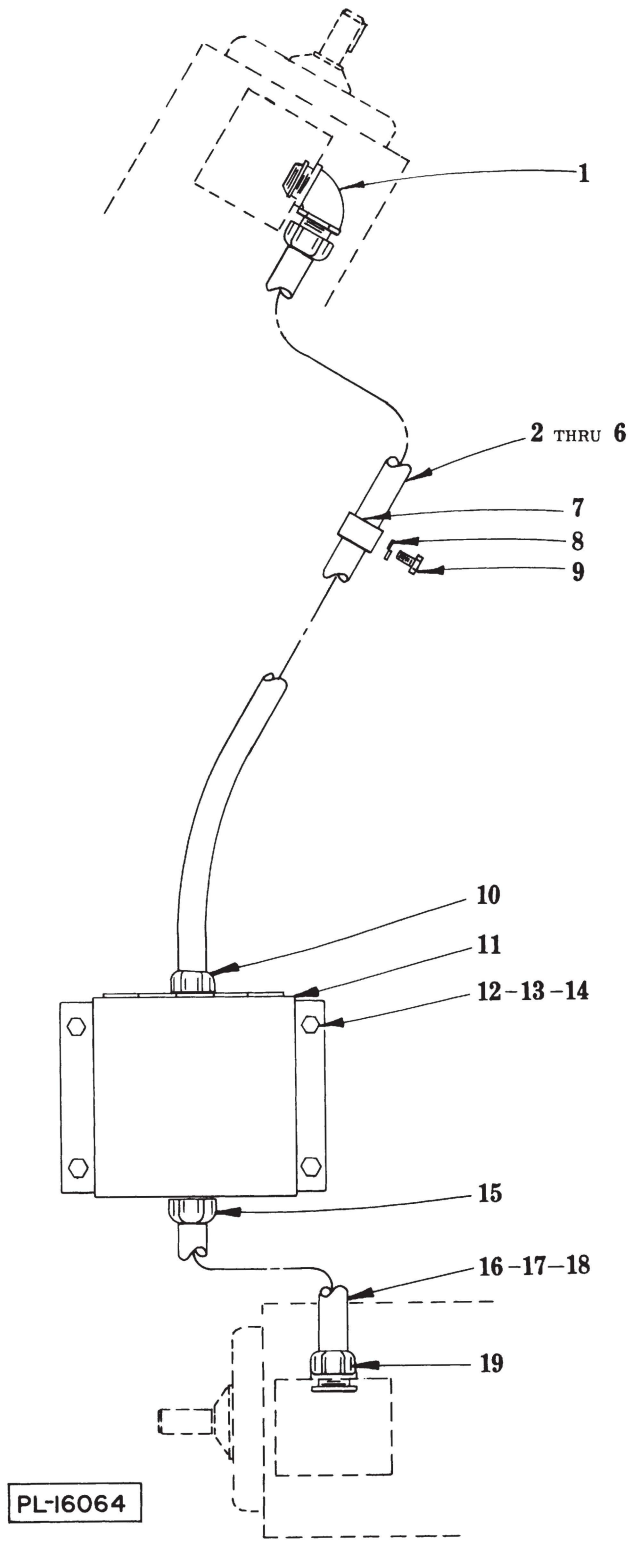
ILLUS. PL-14779	PART NO.	NAME OF PART	AMT.
**1	D-223325-23	Gasket - Seal Head	1
**2	D-223325-58	Gasket - Seal Head	1
**3	D-223325-29	Head - Seal	1
**4	D-223325-70	Head - Seal	1
**5	D-223325-30	Seal - Mechanical (Type 21)	1
**6	D-223325-71	Seal - Mechanical (Type 21)	1
**7	D-223325-33	Gasket - Seal Gland	1
**8	D-223325-73	Gasket - Seal Gland	1
**9	D-223325-31	Gland - Seal	1
**10	D-223325-72	Gland - Seal	1
11	D-223325-11	Slinger	1
**12	D-223325-10	Clamping Ring	1
**13	D-223325-46	Clamping Ring	1
**14	D-223325-7	Felt Ring	1
**15	D-223325-43	Felt Ring	1
**16	D-223325-6	Nut - Bearing Adjusting	1
**17	D-223325-42	Nut - Bearing Adjusting	1
**18	D-223325-18	Ball Bearing - Seal End	1
**19	D-223325-52	Ball Bearing - Seal End	1
**20	D-223325-12	Shaft Assy. (Incls. items #55, 57, 58 & 59)	1
**21	D-223325-47	Shaft Assy. (Incls. items #56, 57, 58 & 59)	1
**22	D-223325-13	Shaft Assy. (Incls. items #18, 24, 55, 57, 58 & 59)	1
**23	D-223325-48	Shaft Assy. (Incls. items #19, 25, 56, 57, 58 & 60)	1
**24	D-223325-18	Ball Bearing - Coupling End	1
**25	D-223325-52	Ball Bearing - Coupling End	1
**26	D-223325-5	Spring - Bearing Adjusting	1
**27	D-223325-41	Spring - Bearing Adjusting	1
**28	D-223325-1	Support Head	1
**29	D-223325-38	Support Head	1
30	D-223325-2	Grease Fitting - 1/8"	2
**31	D-223325-4	Gasket - Bearing Cover	1
**32	D-223325-40	Gasket - Bearing Cover	1
**33	D-223325-3	Cover - Bearing	1
**34	D-223325-39	Cover - Bearing	1
**35	D-223325-15	Key - Shaft	1
**36	D-223325-49	Key - Shaft	1
**37	D-223325-10	Ring - Clamping	1
**38	D-223325-46	Ring - Clamping	1
**39	SC-90-27	Fin. Bolt - 1/4"-20 x 1-1/2" Hex Hd	4
**40	SC-36-24	Fin. Bolt - 5/16"-18 x 5/8" Hex Hd	4
**41	D-223325-7	Felt Ring	1
**42	D-223325-43	Felt Ring	1
**43	SC-36-57	Fin. Bolt - 3/8"-16 x 1-1/4" Hex Hd	4
**44	SC-37-1	Fin. Bolt - 1/2"-13 x 1-1/2" Hex Hd	4
**45	D-223325-24	Casing	1
**46	D-223325-59	Casing	1
47	FP-28-7	Plug - 1/4" Sq. Hd. Pipe	AR
**48	D-223325-8	Clip - Adjusting	1
**49	D-223325-44	Clip - Adjusting	1
50	WL-3-37	Lock Washer - 1/4" Medium	1
51	SC-36-14	Fin. Bolt - 1/4"-20 x 1/2" Hex Hd	1
**52	D-223325-26	Impeller (6-3/8" Dia.)	1
**53	D-223325-27	Impeller (6-7/8" Dia.)	1
**54	D-223325-65	Impeller (8" Dia.)	1
**55	D-223325-17	Washer - Impeller	1
**56	D-223325-51	Washer - Impeller	1
57	D-223325-14	Nut - Impeller	1
58	D-223325-34	Cotter Pin	1
**59	D-223325-16	Key - Impeller	1
**60	D-223325-50	Key - Impeller	1
61	NS-13-11	Full Nut - 5/16"-18 Hex Fin	2
**62	SC-36-30	Fin. Bolt - 5/16"-18 x 1-1/2" Hex Hd	2
**63	SC-36-31	Fin. Bolt - 5/16"-18 x 1-3/4" Hex Hd	2
**64	D-223325-28	Gasket - Suction Head	1
**65	D-223325-68	Gasket - Suction Head	1
**66	D-223325-25	Suction Head	1
**67	D-223325-62	Suction Head	1
**68	SC-37-2	Fin. Bolt - 1/2"-13 x 1-3/4" Hex Hd	6
**69	SC-36-97	Fin. Bolt - 1/2"-13 x 1" Hex Hd	8

*Use with 2 H.P.

**Use with 3 H.P.

***Use with 5 H.P.

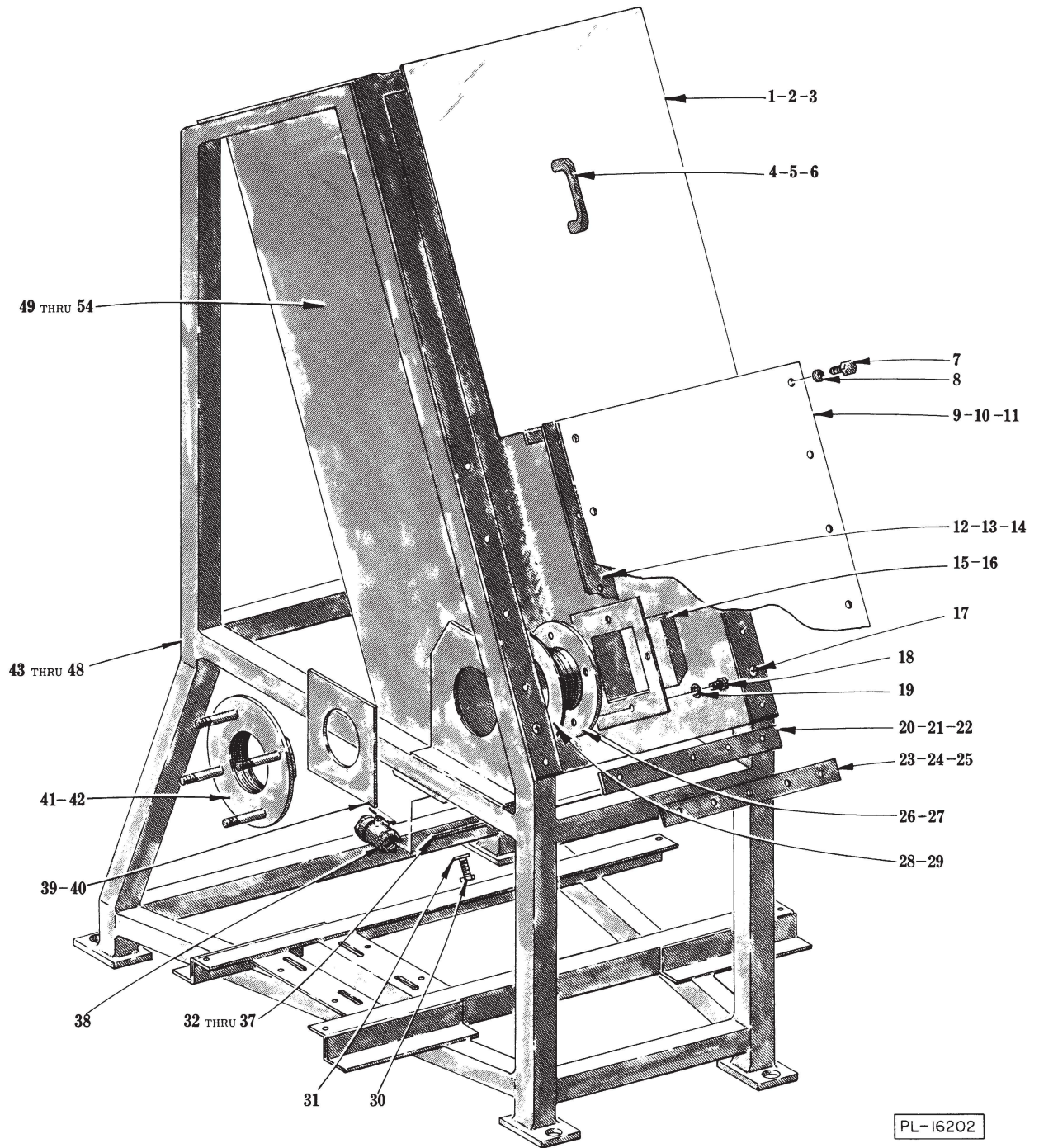
W-26 WATERPRESS REPLACEMENT PARTS



CONDUIT

CONDUIT

ILLUS. PL-16064	PART NO.	NAME OF PART	AMT.
1	FE-22-18	Connector - 90° (1/2" Male Thd. x 1/2" Flex. Cnd.)	1
2	C-222983-14	Conduit - 1/2" x 54" Flex. (W-26) (R. to L.)	1
3	C-222983-21	Conduit - 1/2" x 66" Flex. (W-26, L. to R.; W-38, R. to L.)	1
4	C-222983-3	Conduit - 1/2" x 78" Flex. (W-38) (L. to R.)	1
5	C-222983-4	Conduit - 1/2" x 84" Flex. (W-59) (R. to L.)	1
6	C-222983-6	Conduit - 1/2" x 96" Flex. (W-59) (L. to R.)	1
7	FE-18-35	Clamp - 3/4" Conduit	2
8	WL-6-17	Lock Washer - 1/4" Medium	2
9	SC-67-27	Mach. Screw - 1/4"-20 x 3/8" Ind. Hex Hd	2
10	FE-22-15	Connector - Straight (1/2" Male Thd. x 1/2" Flex. Cnd.)	1
11	C-223115-2	Junction Box	1
12	SC-41-50	Fin. Bolt - 1/4"-20 x 1/2" Hex Hd	4
13	WL-6-17	Lock Washer - 1/4" Medium	4
14	NS-15-1	Full Nut - 1/4"-20 Hex Fin	4
15	FE-22-15	Connector - Straight (1/2" Male Thd. x 1/2" Flex. Cnd.)	1
16	C-222983-1	Conduit - 1/2" x 12" Flex. (W-26)	1
17	C-222983-22	Conduit - 1/2" x 15" Flex. (W-38)	1
18	C-222983-19	Conduit - 1/2" x 24" Flex. (W-59)	1
19	FE-22-15	Connector - Straight (1/2" Male Thd. x 1/2" Flex. Cnd.)	1



PL-16202

BASE AND SHELL UNIT

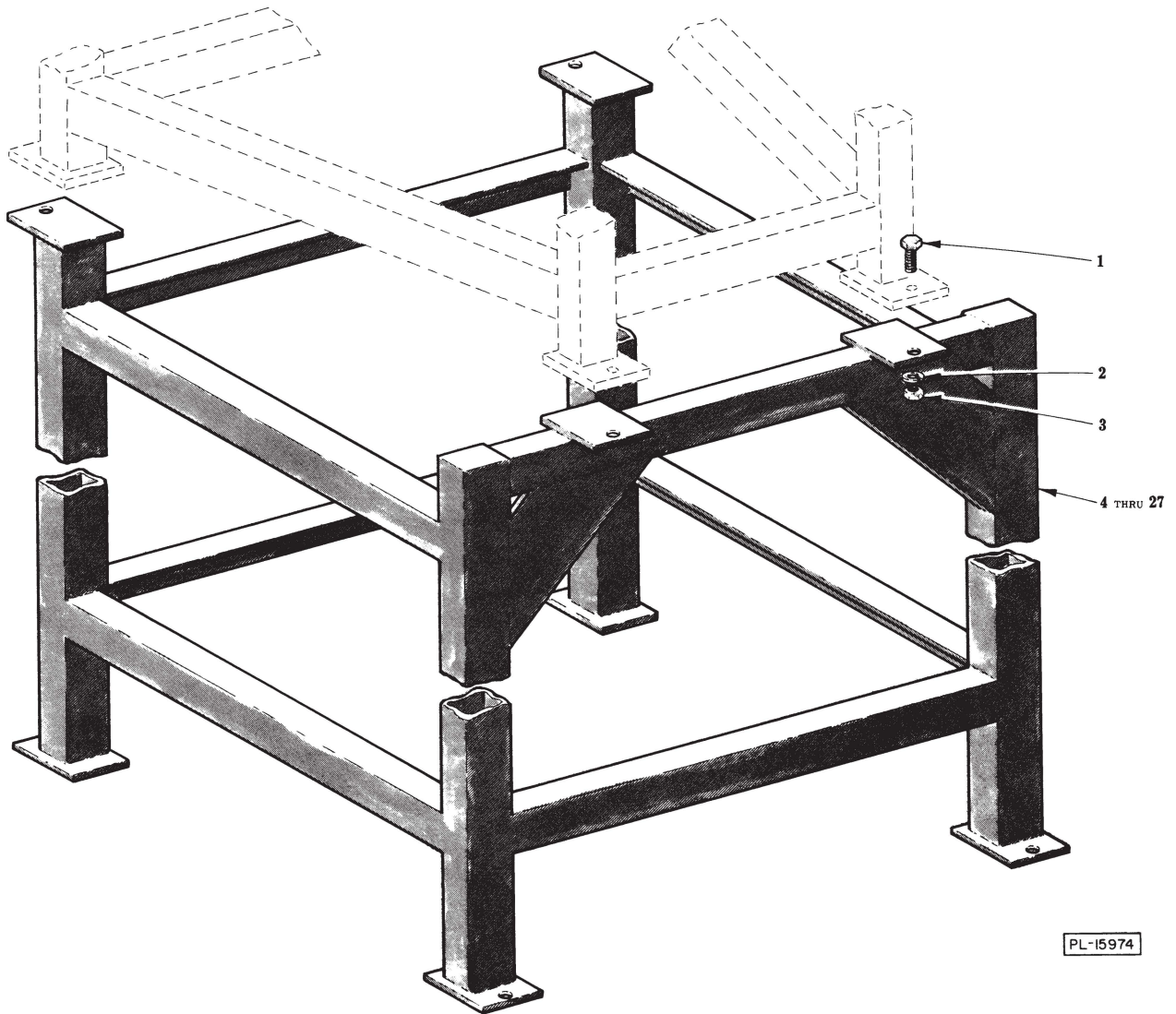
BASE AND SHELL UNIT

ILLUS. PL-16202	PART NO.	NAME OF PART	AMT.
*1	B-216165	Removable Cover Assy. (Incls. items #4, 5 & 6)	1
**2	D-216166	Removable Cover Assy. (Incls. items #4, 5 & 6)	1
***3	B-216167	Removable Cover Assy. (Incls. items #4, 5 & 6)	1
4	B-222559	Handle - Cover	1
5	SC-21-22	Mach. Screw - #10-24 x 3/8" Rd. Hd	2
6	WL-14-7	Lock Washer - #10 Ext. Shakeproof	2
7	SC-41-10	Fin. Bolt - 5/16"-18 x 5/8" Hex Hd	15
8	B-223534	Washer - 5/16" Sealing	15
*9	B-216188	Stationary Cover Assy. (Top) (Incls. items #12 & 23)	1
**10	B-216190	Stationary Cover Assy. (Top) (Incls. items #13 & 24)	1
***11	B-216192	Stationary Cover Assy. (Top) (Incls. items #14 & 25)	1
*12	B-223288-1	Gasket - Top Cover (Long)	2
**13	B-223288-2	Gasket - Top Cover (Long)	2
***14	B-223288-3	Gasket - Top Cover (Long)	2
*,**15	B-216156	Inlet Flange Sub-Assy. (3")	1
**16	B-216158	Inlet Flange Sub-Assy. (4")	1
17	SC-110-35	Cap Screw - 5/16"-18 x 1" Soc. Flat Hd	2
18	SC-67-23	Mach. Screw - 5/16"-18 x 3/8" Ind. Hex Hd	4
19	B-223534	Washer - 5/16" Sealing	4
*20	B-216172	Stationary Cover Assy. (Bottom) (Incls. items #32 & 35)	1
**21	B-216174	Stationary Cover Assy. (Bottom) (Incls. items #33 & 36)	1
***22	B-216176	Stationary Cover Assy. (Bottom) (Incls. items #34 & 37)	1
*23	B-223288-5	Gasket - Top Cover (Short)	1
**24	B-223288-6	Gasket - Top Cover (Short)	1
***25	B-223288-7	Gasket - Top Cover (Short)	1
*,**26	B-216153	Stationary Flange - Inlet (3")	1
**27	B-216154	Stationary Flange - Inlet (4")	1
*,**28	B-222376-2	Gasket (3-1/2" I.D.)	1
***29	B-222376-3	Gasket (4-1/2" I.D.)	1
30	SC-41-10	Fin. Bolt - 5/16"-18 x 5/8" Hex Hd	10
31	B-223534	Washer - 5/16" Sealing	10
*32	B-222408-1	Gasket - Bottom Cover (Long)	2
**33	B-222408-2	Gasket - Bottom Cover (Long)	2
***34	B-222408-3	Gasket - Bottom Cover (Long)	2
*35	B-222409-1	Gasket - Bottom Cover (Short)	1
**36	B-222409-2	Gasket - Bottom Cover (Short)	1
***37	B-222409-3	Gasket - Bottom Cover (Short)	1
38	A-223220-3	Ball Valve - 3/4"	1
*,**39	B-222272-1	Plate - Inlet (3-5/8" I.D.)	1
***40	B-222272-2	Plate - Inlet (4-5/8" I.D.)	1
*,**41	B-216161	Stud Flange - Inlet (3")	1
***42	B-216162	Stud Flange - Inlet (4")	1
*43	C-223286-1	Base Sub-Assy. (L. to R.)	1
**44	C-223286-2	Base Sub-Assy. (L. to R.)	1
***45	C-223286-3	Base Sub-Assy. (L. to R.)	1
*46	C-223287-1	Base Sub-Assy. (R. to L.)	1
**47	C-223287-2	Base Sub-Assy. (R. to L.)	1
***48	C-223287-3	Base Sub-Assy. (R. to L.)	1
*49	E-223439	Shell Sub-Assy. (R. to L.)	1
*50	E-223438	Shell Sub-Assy. (L. to R.)	1
**51	E-223441	Shell Sub-Assy. (R. to L.)	1
**52	E-223440	Shell Sub-Assy. (L. to R.)	1
***53	E-223443	Shell Sub-Assy. (R. to L.)	1
**54	E-223442	Shell Sub-Assy. (L. to R.)	1

*Use with W-26.

**Use with W-38.

***Use with W-59.

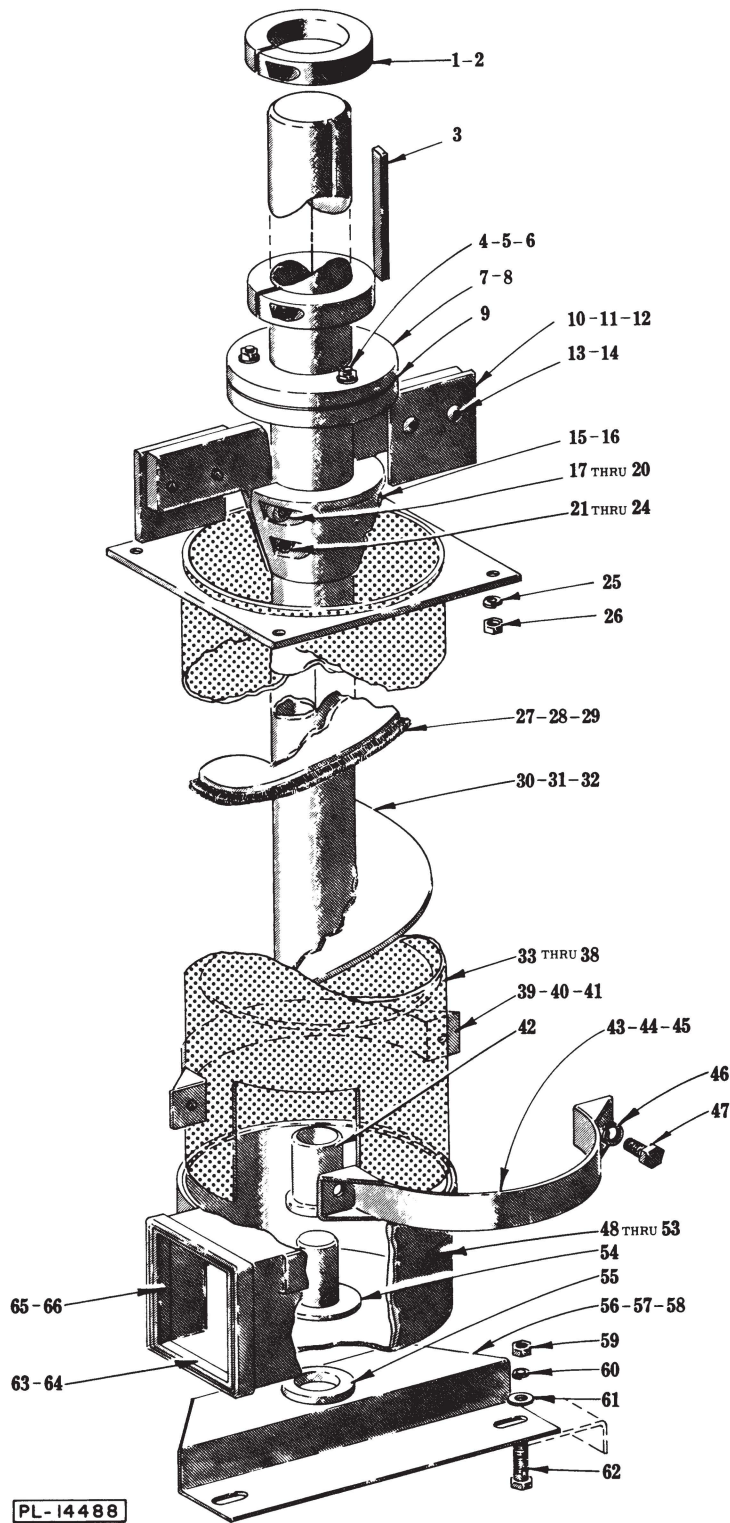


AUXILIARY BASE UNIT

AUXILIARY BASE UNIT

ILLUS. PL-15974	PART NO.	NAME OF PART	AMT.
1	SC-41-45	Fin. Bolt - 1/2"-13 x 1-1/2" Hex Hd	4
2	WL-6-36	Lock Washer - 1/2" Medium	4
3	NS-15-20	Full Nut - 1/2"-13 Hex Fin	4
*4	C-223348-1	Auxiliary Base Assy. (6" Height)	1
*5	C-223348-2	Auxiliary Base Assy. (12" Height)	1
*6	C-223348-3	Auxiliary Base Assy. (18" Height)	1
*7	C-223347-1	Auxiliary Base Assy. (24" Height)	1
*8	C-223347-2	Auxiliary Base Assy. (30" Height)	1
*9	C-223347-3	Auxiliary Base Assy. (36" Height)	1
*10	C-223347-4	Auxiliary Base Assy. (42" Height)	1
*11	C-223347-5	Auxiliary Base Assy. (48" Height)	1
**12	C-223350-1	Auxiliary Base Assy. (6" Height)	1
**13	C-223350-2	Auxiliary Base Assy. (12" Height)	1
**14	C-223350-3	Auxiliary Base Assy. (18" Height)	1
**15	C-223349-1	Auxiliary Base Assy. (24" Height)	1
**16	C-223349-2	Auxiliary Base Assy. (30" Height)	1
**17	C-223349-3	Auxiliary Base Assy. (36" Height)	1
**18	C-223349-4	Auxiliary Base Assy. (42" Height)	1
**19	C-223349-5	Auxiliary Base Assy. (48" Height)	1
***20	C-223352-1	Auxiliary Base Assy. (6" Height)	1
***21	C-223352-2	Auxiliary Base Assy. (12" Height)	1
***22	C-223352-3	Auxiliary Base Assy. (18" Height)	1
***23	C-223341-1	Auxiliary Base Assy. (24" Height)	1
***24	C-223351-2	Auxiliary Base Assy. (30" Height)	1
***25	C-223351-3	Auxiliary Base Assy. (36" Height)	1
***26	C-223351-4	Auxiliary Base Assy. (42" Height)	1
***27	C-223351-5	Auxiliary Base Assy. (48" Height)	1

*Use with W-26.
**Use with W-38.
***Use with W-59.

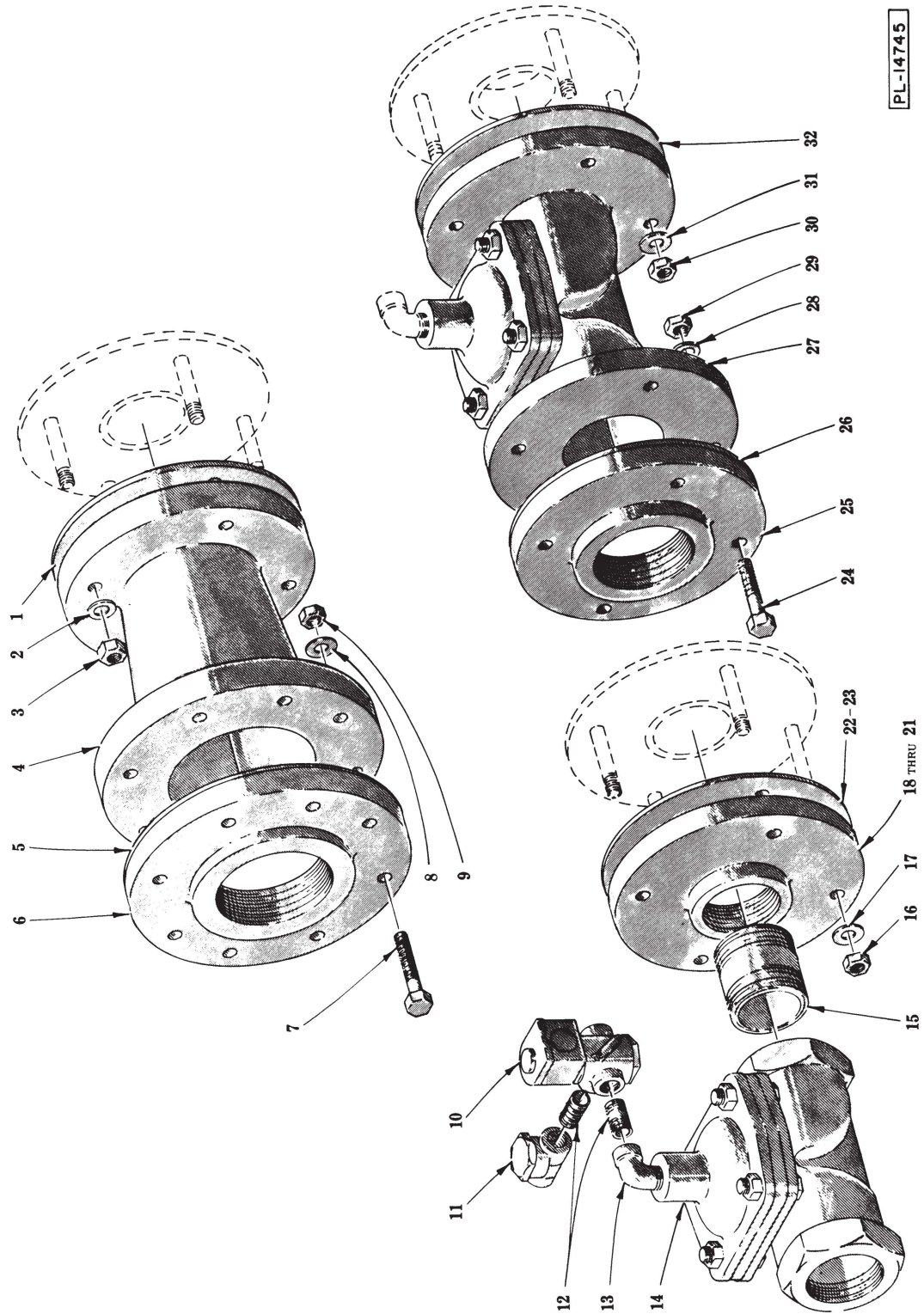


SCREW UNIT

REPLACEMENT PARTS W-26 WATERPRESS

ILLUS.	PART NO.	SCREW UNIT NAME OF PART	AMT.
PL-14488			
* **1	B-223486	Collar - Locking	2
**2	B-223487	Collar - Locking	2
3	A-222227-3	Key	1
4	SC-86-33	Shoulder Screw - 5/8" x 1-1/4" Soc. Hd	3
5	WL-6-36	Lock Washer - 1/2" Medium	3
6	NS-15-20	Full Nut - 1/2"-13 Hex Fin	3
* **7	B-216222	Shaft Stub Sub-Assy	1
**8	B-216223	Shaft Stub Sub-Assy	1
9	B-222414-3	Gasket	1
*10	B-222361-2	Plate - Wiper	2
**11	B-222361-3	Plate - Wiper	2
**12	B-222361-4	Plate - Wiper	2
*13	SC-76-2	Cap Screw - 1/4"-20 x 5/8" Soc. Button Hd	4
** **14	SC-85-19	Cap Screw - 5/16"-18 x 5/8" Soc. Button Hd	4
*15	C-222419	Cone - Compression	1
** **16	C-222420-1	Cone - Compression	1
*17	SC-59-30	Cap Screw - 1/4"-20 x 1" Soc. Fil. Hd	2
*18	WL-6-17	Lock Washer - 1/4" Medium	2
** **19	SC-59-32	Cap Screw - 5/16"-18 x 1" Soc. Fil. Hd	2
** **20	WL-6-23	Lock Washer - 5/16" Medium	2
*21	SC-59-15	Cap Screw - #10-24 x 1" Soc. Fil. Hd	2
*22	WL-6-7	Lock Washer - #10 Medium	2
** **23	SC-59-32	Cap Screw - 5/16"-18 x 1" Soc. Fil. Hd	2
** **24	WL-6-23	Lock Washer - 5/16" Medium	2
25	WL-6-23	Lock Washer - 5/16" Medium	4
26	NS-15-11	Full Nut - 5/16"-18 Hex Fin	4
*27	A-222562-1	Brush - Screw	1
*28	A-222562-2	Brush - Screw	1
**29	A-222562-3	Brush - Screw	1
*30	C-216133	Screw Sub-Assy. (Incls. items #27 & 42)	1
**31	C-216134	Screw Sub-Assy. (Incls. items #28 & 42)	1
**32	C-216135	Screw Sub-Assy. (Incls. items #29 & 42)	1
*33	C-216109	Screen Sub-Assy. (R. to L.)	1
*34	C-216110	Screen Sub-Assy. (L. to R.)	1
**35	C-216111	Screen Sub-Assy. (R. to L.)	1
*36	C-216112	Screen Sub-Assy. (L. to R.)	1
**37	C-216113	Screen Sub-Assy. (R. to L.)	1
**38	C-216114	Screen Sub-Assy. (L. to R.)	1
*39	B-216259	Compression Ring Half (Thd.)	5
*40	B-216261	Compression Ring Half (Thd.)	5
**41	B-216263	Compression Ring Half (Thd.)	5
42	B-222424-1	Bearing - Screw	1
*43	B-216260	Compression Ring Half	5
**44	B-216262	Compression Ring Half	5
**45	B-216264	Compression Ring Half	5
46	WL-6-23	Lock Washer - 5/16" Medium	10
47	SC-41-12	Fin. Bolt - 5/16"-18 x 7/8" Hex Hd	10
*48	C-216138	Screen Retainer & Inlet Assy. (L. to R.) (Incls. items #63 & 65)	1
*49	C-216139	Screen Retainer & Inlet Assy. (R. to L.) (Incls. items #63 & 65)	1
**50	C-216140	Screen Retainer & Inlet Assy. (L. to R.) (Incls. items #63 & 65)	1
**51	C-216141	Screen Retainer & Inlet Assy. (R. to L.) (Incls. items #63 & 65)	1
**52	C-216142	Screen Retainer & Inlet Assy. (L. to R.) (Incls. items #64 & 66)	1
**53	C-216143	Screen Retainer & Inlet Assy. (R. to L.) (Incls. items #64 & 66)	1
54	B-222357-1	Washer	1
55	B-223520	Grommet	1
*56	B-222049-1	Mounting Bracket	1
**57	B-222049-2	Mounting Bracket	1
**58	B-222049-3	Mounting Bracket	1
59	NS-15-11	Full Nut - 5/16"-18 Hex Fin	2
60	WL-6-23	Lock Washer - 5/16 Medium	2
61	WS-5-39	Washer	2
62	SC-41-13	Fin. Bolt - 5/16"-18 x 1" Hex Hd	2
* **63	B-222413-1	Gasket (Short)	2
**64	B-222413-3	Gasket (Short)	2
* **65	B-222413-2	Gasket (Long)	2
**66	B-222413-4	Gasket (Long)	2
	*B-216257-2	Compression Cone Sub-Assy. (Incls. items #10, 13, 15, 17, 18, 21 & 22)	1
	**B-216258-1	Compression Cone Sub-Assy. (Incls. items #11, 14, 16, 19 & 20)	1
	**B-216258-2	Compression Cone Sub-Assy. (Incls. items #12, 14, 16, 19 & 20)	1

*Use with W-26.
 **Use with W-38.
 ***Use with W-59.



PL-14745

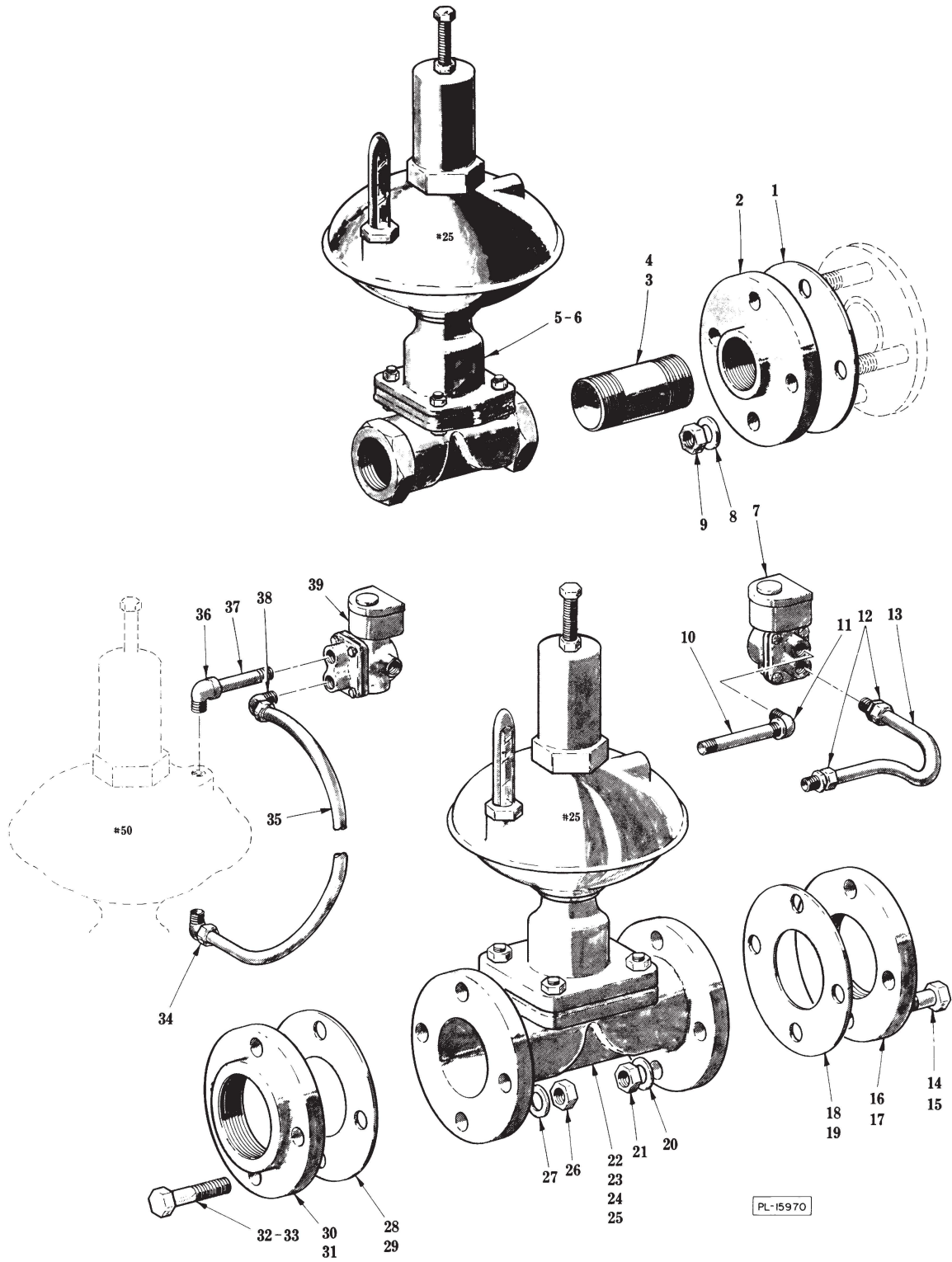
SLURRY INLET UNIT

SLURRY INLET UNIT

ILLUS. PL-14745	PART NO.	NAME OF PART	AMT.
*1	C-223540	Gasket - Full Face (7-1/2" O.D.)	1
*2	WS-28-31	Washer	4
*3	NS-15-17	Full Nut - 5/8"-11 Hex Fin	4
*4	D-223544	Flanged Reducer (9" O.D. to 7-1/2" O.D.)	1
*5	C-223541	Gasket - Full Face (9" O.D.)	1
*6	C-223542	Companion Flange (9" O.D.)	1
*7	SC-37-35	Fin. Bolt - 5/8"11 x 3" Hex Hd	8
*8	WS-28-31	Washer	8
*9	NS-15-17	Full Nut - 5/8"-11 Hex Fin	8
10	C-223470	Solenoid Valve - 1/4"	1
*11	A-223044-1	Check Valve - 1/4"	1
12	FP-40-9	Nipple - 1/4" x 1-1/4" Lg. (T.B.E.)	2
13	FP-15-6	Elbow - 1/4" x 90° Street	1
*14	A-223041-1	Diaphragm Valve	1
15	FP-43-6	Nipple - 2" x 2" Lg. (T.B.E.)	1
16	NS-15-17	Full Nut - 5/8"-11 Hex Fin	AR
17	WS-28-31	Washer	AR
*18	C-223530	Companion Flange (7-1/2" O.D. x 2" N.P.T.)	1
*19	C-223537	Companion Flange (7-1/2" O.D. x 3" N.P.T.)	1
**20	C-223533	Companion Flange (9" O.D. x 3" N.P.T.)	1
**21	C-223542	Companion Flange (9" O.D. x 4" N.P.T.)	1
22	C-223540	Gasket - Full Face (7-1/2" O.D.)	1
**23	C-223541	Gasket - Full Face (9" O.D.)	1
24	SC-37-33	Fin. Bolt - 5/8"-11 x 2-1/2" Hex Hd	AR
25	C-223537	Companion Flange (7-1/2" O.D.)	1
26	C-223540	Gasket - Full Face (7-1/2" O.D.)	1
*27	A-223041-2	Diaphragm Valve	1
28	WS-28-31	Washer	4
29	NS-15-17	Full Nut - 5/8"-11 Hex Fin	4
30	NS-15-17	Full Nut - 5/8"-11 Hex Fin	4
31	WS-28-31	Washer	4
32	C-223540	Gasket - Full Face (7-1/2" O.D.)	1

*Use with W-26 or W-38.

**Use with W-59.

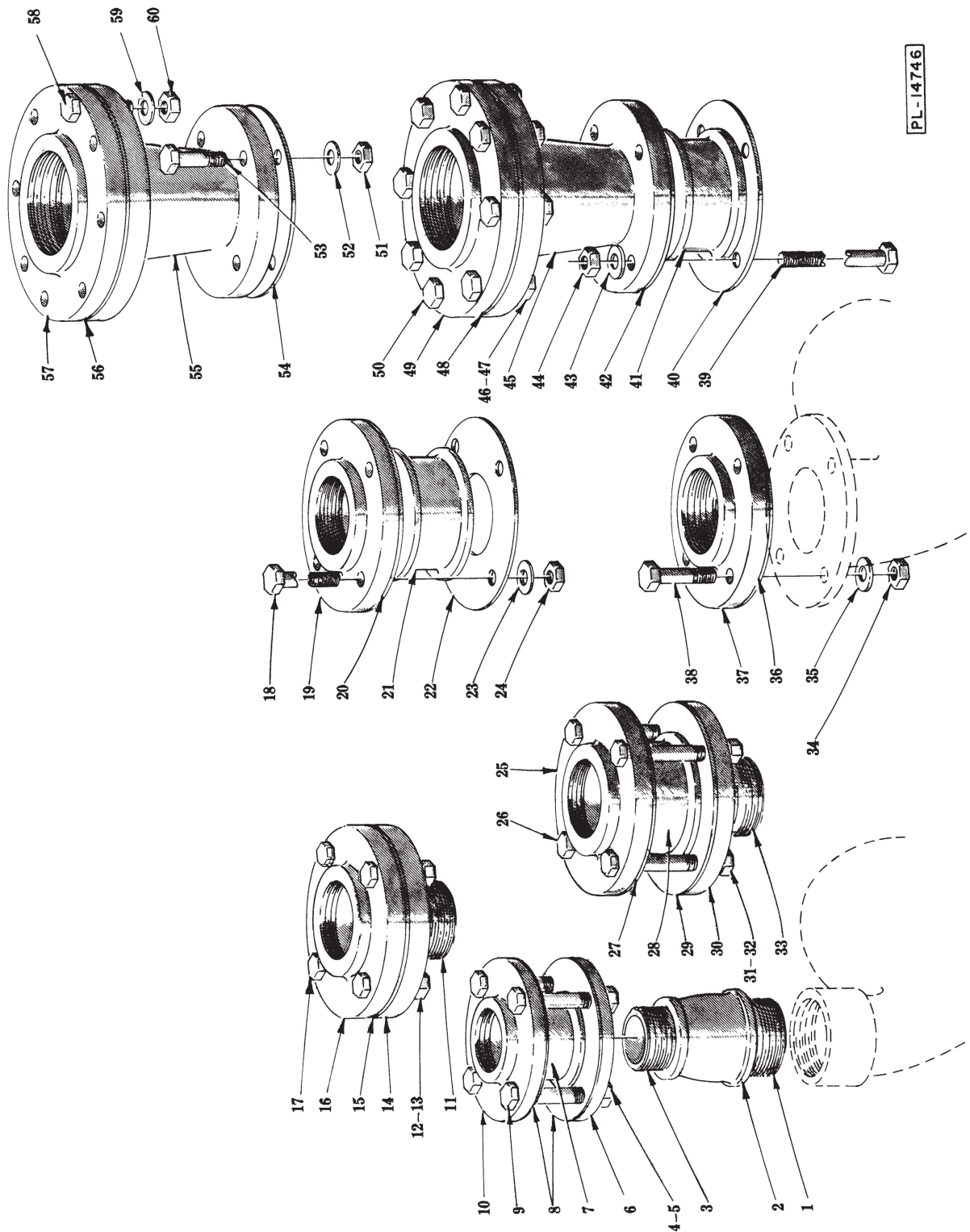


SLURRY INLET UNIT
(DIAPHRAGM VALVE)

**SLURRY INLET UNIT
(DIAPHRAGM VALVE)**

ILLUS. PL-15970	PART NO.	NAME OF PART	AMT.
*1	C-223540	Gasket - Full Face (7-1/2" O.D.)	1
*2	C-223530	Companion Flange (7-1/2" O.D.)	1
*3	FP-70-18	Nipple - 2" x 4" Lg. (T.B.E.)	1
*4	FP-70-25	Nipple - 2" x 7-1/8" Lg. (T.B.E.)	1
*5	C-223308-1	Diaphragm Valve - #25 (2")	1
*6	C-223308-2	Diaphragm Valve - #50 (2")	1
7	C-223469	Solenoid Valve - 1/4"	1
*8	WS-28-31	Washer	4
*9	NS-15-17	Full Nut - 5/8"-11 Hex Fin	4
10	FP-75-62	Nipple - 1/4" x 3-1/2" Lg. (T.B.E.)	1
11	FP-15-6	Elbow - 1/4" x 90° Street	1
12	FP-12-24	Connector - Straight (1/4" Male Thd. x 3/8" Tube)	2
13	522260	Tube - 1/4" (Specify Length)	1
14	SC-37-32	Fin. Bolt - 5/8"-11 x 2-1/4" Hex Hd	4
15	SC-37-34	Fin. Bolt - 5/8"-11 x 2-3/4" Hex Hd	8
16	C-223537	Companion Flange (7-1/2" O.D.)	1
17	C-223542	Companion Flange (9" O.D.)	1
18	C-223540	Gasket - Full Face (7-1/2" O.D.)	1
19	C-223541	Gasket - Full Face (9" O.D.)	1
20	WS-28-31	Washer	AR
21	NS-15-17	Full Nut - 5/8"-11 Hex Fin	AR
22	C-223308-3	Diaphragm Valve - #25 (3")	1
23	C-223308-4	Diaphragm Valve - #50 (3")	1
24	C-223308-5	Diaphragm Valve - #25 (4")	1
25	C-223308-6	Diaphragm Valve - #50 (4")	1
26	NS-15-17	Full Nut - 5/8"-11 Hex Fin	AR
27	WS-28-31	Washer	AR
28	C-223540	Gasket - Full Face (7-1/2" O.D.)	1
29	C-223541	Gasket - Full Face (9" O.D.)	1
30	C-223537	Companion Flange (7-1/2" O.D.)	1
31	C-223542	Companion Flange (9" O.D.)	1
32	SC-37-32	Fin. Bolt - 5/8"-11 x 2-1/4" Hex Hd	4
33	SC-37-34	Fin. Bolt - 5/8"-11 x 2-3/4" Hex Hd	8
34	FP-12-11	Elbow - 90° (1/4" Male Thd. x 3/8" Tube)	1
35	522260	Tube - 1/4" (Specify Length)	1
36	FP-15-6	Elbow - 1/4" x 90° Street	1
37	FP-40-16	Nipple - 1/4" x 2-1/2" Lg. (T.B.E.)	1
38	FP-12-11	Elbow - 90° (1/4" Male Thd. x 3/8" Tube)	1
39	C-223469	Solenoid Valve - 1/4"	1

*Use with W-26.

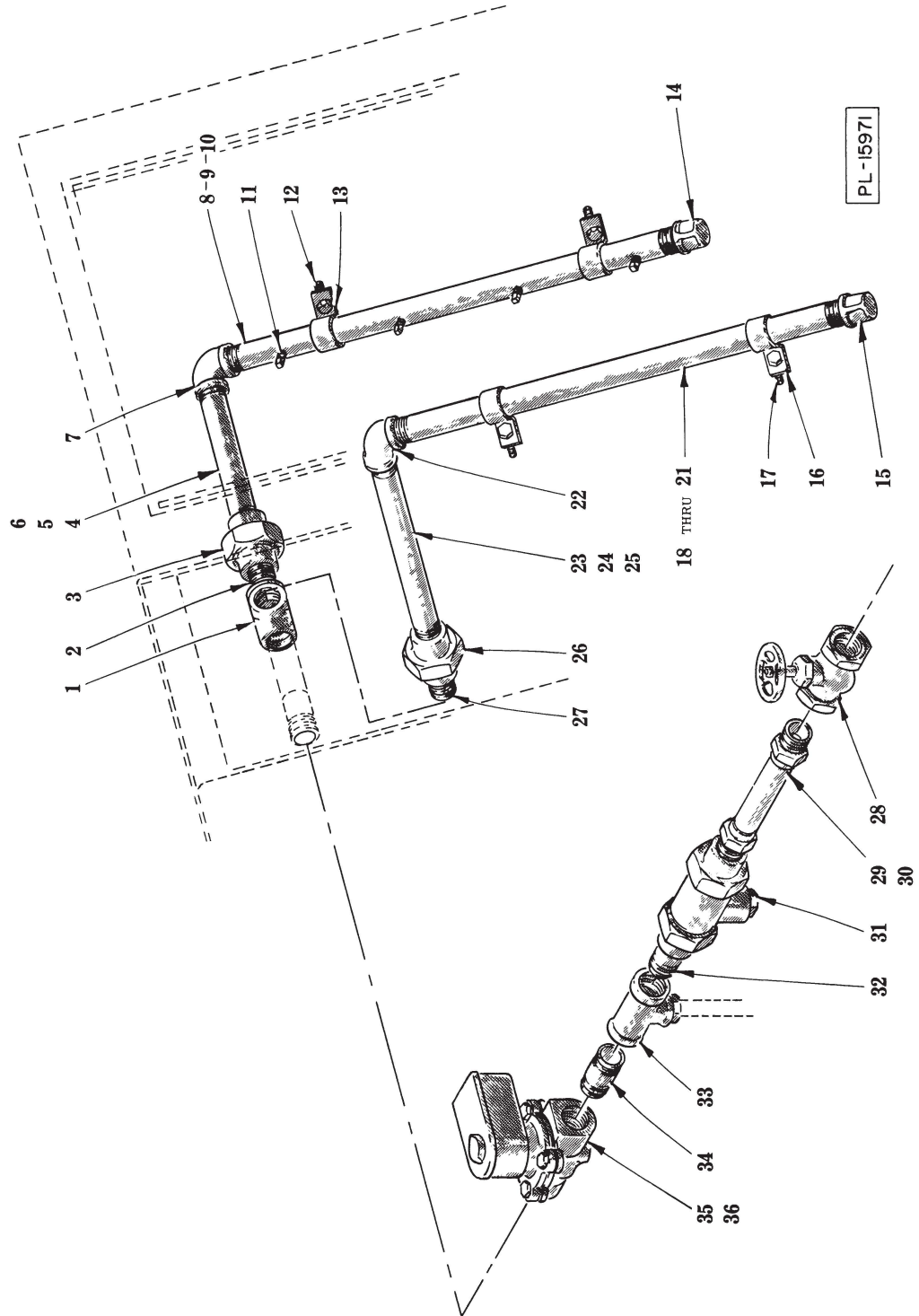


RETURN PUMP DISCHARGE PIPING UNIT

RETURN PUMP DISCHARGE PIPING UNIT

ILLUS. PL-14746	PART NO.	NAME OF PART	AMT.
*1	FP-70-20	Nipple - 2-1/2" x 2-1/2" Lg. (T.B.E.)	1
*2	FP-25-11	Coupling - 2-1/2" to 2" Reducer	1
*3	FP-43-6	Nipple - 2" x 2" Lg. (T.B.E.)	1
*4	NS-15-17	Full Nut - 5/8"-11 Hex Fin	4
*5	WS-28-31	Washer	4
*6	C-223543	Companion Flange (6" O.D.)	1
*7	A-223045-1	Check Valve - 2"	1
*8	C-223545	Gasket - Full Face (6" O.D.)	2
*9	SC-97-60	Fin. Bolt - 5/8"-11 x 4-1/2" Hex Hd	4
*10	C-223543	Companion Flange (6" O.D.)	1
*11	FP-70-20	Nipple - 2-1/2" x 2-1/2" Lg. (T.B.E.)	1
*12	NS-15-17	Full Nut - 5/8"-11 Hex Fin	4
*13	WS-28-31	Washer	4
*14	C-223532	Companion Flange (7-1/2" O.D.)	1
*15	C-223540	Gasket - Full Face (7-1/2" O.D.)	1
*16	C-223537	Companion Flange (7-1/2" O.D.)	1
*17	SC-37-33	Fin. Bolt - 5/8"-11 x 2-1/2" Hex Hd	4
**18	SC-37-38	Fin. Bolt - 5/8"-11 x 5" Hex Hd	4
**19	C-223537	Companion Flange (7-1/2" O.D.)	1
**20	C-223540	Gasket - Full Face (7-1/2" O.D.)	1
**21	A-223045-2	Check Valve - 3"	1
**22	C-223540	Gasket - Full Face (7-1/2" O.D.)	1
**23	WS-28-31	Washer	4
**24	NS-15-17	Full Nut - 5/8"-11 Hex Fin	4
*25	C-223537	Companion Flange (7-1/2" O.D.)	1
*26	SC-37-38	Fin. Bolt - 5/8"-11 x 5" Hex Hd	4
*27	C-223540	Gasket - Full Face (7-1/2" O.D.)	1
*28	A-223045-2	Check Valve - 3"	1
*29	C-223540	Gasket - Full Face (7-1/2" O.D.)	1
*30	C-223532	Companion Flange (7-1/2" O.D.)	1
*31	NS-15-17	Full Nut - 5/8"-11 Hex Fin	4
*32	WS-28-31	Washer	4
*33	FP-70-20	Nipple - 2-1/2" x 2-1/2" Lg. (T.B.E.)	1
**34	NS-15-17	Full Nut - 5/8"-11 Hex Fin	4
**35	WS-28-31	Washer	4
**36	C-223540	Gasket - Full Face (7-1/2" O.D.)	1
**37	C-223537	Companion Flange (7-1/2" O.D.)	1
**38	SC-37-33	Fin. Bolt - 5/8"-11 x 2-1/2" Hex Hd	4
**39	SC-37-38	Fin. Bolt - 5/8"-11 x 5" Hex Hd	4
**40	C-223540	Gasket - Full Face (7-1/2" O.D.)	1
**41	A-223045-2	Check Valve - 3"	1
**42	C-223540	Gasket - Full Face (7-1/2" O.D.)	1
**43	WS-28-31	Washer	4
**44	NS-15-17	Full Nut - 5/8"-11 Hex Fin	4
**45	C-223544	Flanged Reducer (9" O.D. to 7-1/2" O.D.)	1
**46	NS-15-17	Full Nut - 5/8"-11 Hex Fin	8
**47	WS-28-31	Washer	8
**48	C-223541	Gasket - Full Face (9" O.D.)	1
**49	C-223542	Companion Flange (9" O.D.)	1
**50	SC-37-35	Fin. Bolt - 5/8"-11 x 3" Hex Hd	8
**51	NS-15-17	Full Nut - 5/8"-11 Hex Fin	4
**52	WS-28-31	Washer	4
**53	SC-37-33	Fin. Bolt - 5/8"-11 x 2-1/2" Hex Hd	4
**54	C-223540	Gasket - Full Face (7-1/2" O.D.)	1
**55	D-223544	Flanged Reducer (9" O.D. to 7-1/2" O.D.)	1
**56	C-223541	Gasket - Full Face (9" O.D.)	1
**57	C-223542	Companion Flange (9" O.D.)	1
**58	SC-37-35	Fin. Bolt - 5/8"-11 x 3" Hex Hd	8
**59	WS-28-31	Washer	8
**60	NS-15-17	Full Nut - 5/8"-11 Hex Fin	8

*Use with 2 & 3 H.P. Return Pump Discharge.
 **Use with 5 H.P. Return Pump Discharge.



SCREEN FLUSH UNIT

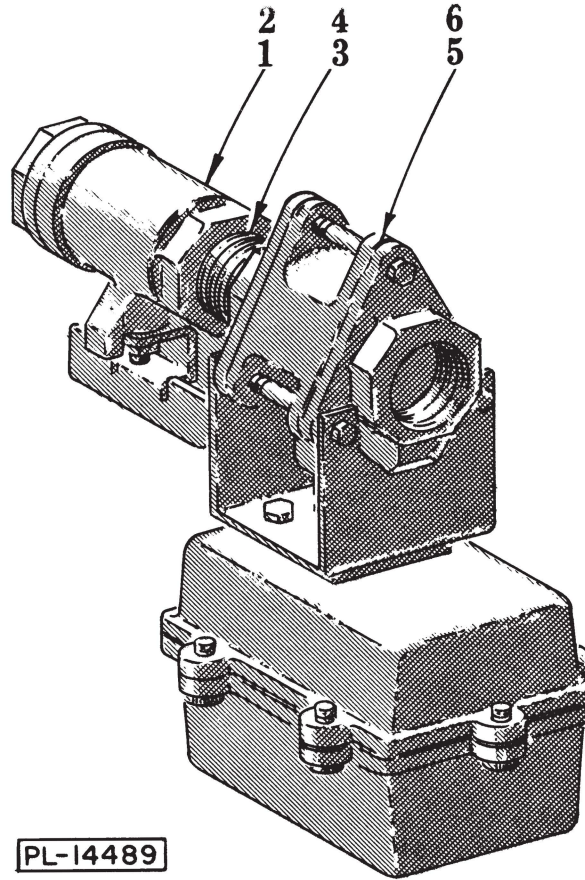
SCREEN FLUSH UNIT

ILLUS. PL-15971	PART NO.	NAME OF PART	AMT.
1	FP-19-30	Tee - 3/4" x 1/2" x 1/2" Reducing	1
2	FP-40-42	Nipple - 1/2" x 1-1/8" Lg. (T.B.E.)	1
3	FP-22-12	Union - 1/2" (Grd. Seat)	1
*4	FP-46-58	Nipple - 1/2" x 6-3/8" Lg. (T.B.E.)	1
**5	FP-40-94	Nipple - 1/2" x 6-5/8" Lg. (T.B.E.)	1
***6	FP-43-56	Nipple - 1/2" x 7-3/8" Lg. (T.B.E.)	1
7	FP-15-16	Elbow - 1/2" x 90°	1
*8	B-223243-1	Pipe - Spary Nozzle (4 Nozzle)	1
**9	B-223243-2	Pipe - Spray Nozzle (5 Nozzle)	1
***10	B-223243-3	Pipe - Spray Nozzle (4 Nozzle)	1
11	B-223516	Nozzle - Spray (1/8" Thd.)	AR
12	SC-41-50	Fin. Bolt - 1/4"-20 x 1/2" Hex Hd	2
13	B-223212-1	Clamp - 1/2" Pipe	2
14	FP-29-7	Cap - 1/2" Pipe	1
15	FP-29-7	Cap - 1/2" Pipe	1
16	C-223212-1	Clamp - 1/2" Pipe	2
17	SC-41-50	Fin. Bolt - 1/4"-20 x 1/2" Hex Hd	2
*18	B-223243-1	Pipe - Spray Nozzle (4 Nozzle)	1
**19	B-223243-2	Pipe - Spray Nozzle (5 Nozzle)	1
***20	B-223243-3	Pipe - Spray Nozzle (4 Nozzle)	1
21	B-223516	Nozzle - Spray (1/8" Thd.)	AR
22	FP-15-16	Elbow - 1/2" x 90°	1
*23	FP-43-37	Nipple - 1/2" x 7-1/8" Lg. (T.B.E.)	1
**24	FP-75-4	Nipple - 1/2" x 10-3/4" Lg. (T.B.E.)	1
***25	FP-75-5	Pipe - 1/2" x 13-5/8" Lg. (T.B.E.)	1
26	FP-22-12	Union - 1/2" (Grd. Seat)	1
27	FP-40-42	Nipple - 1/2" x 1-1/8" Lg. (T.B.E.)	1
28	FP-77-38	Valve - 3/4" Globe	1
29	B-223257-2	Flexible Connector Assy. (3/4")	1
30	FP-41-53	Nipple - 3/4" x 1-3/4" Lg. (T.B.E.) (Not Shown)	1
31	C-223473	Back Flow Preventor Assy. (3/4")	1
32	FP-41-53	Nipple - 3/4" x 1-3/4" Lg. (T.B.E.)	1
33	FP-19-86	Tee - 3/4" x 3/4" x 1/4" Reducing	1
34	FP-41-53	Nipple - 3/4" x 1-3/4" Lg. (T.B.E.)	1
35	C-223466	Valve - 3/4" Solenoid (Incls. item #36)	1
36	A-222949-14	Coil - Solenoid Valve	1

*Use with W-26.

**Use with W-38.

***Use with W-59.

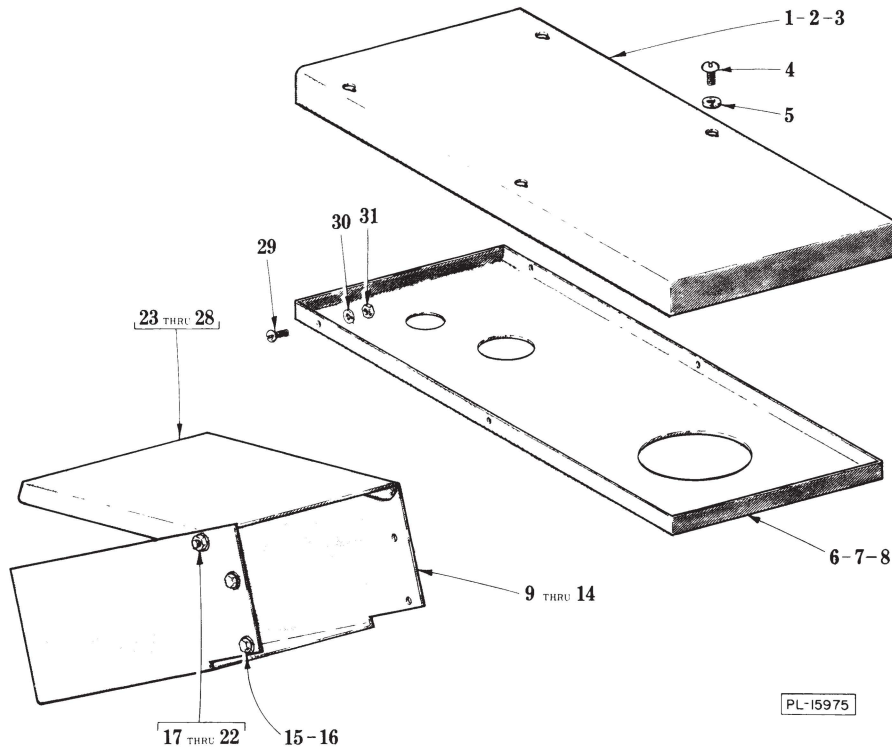


DRAIN VALVE UNIT

ILLUS. PL-14489	PART NO.	NAME OF PART	AMT.
*1	A-223220-1	Ball Valve - 1-1/2"	1
**2	A-223220-2	Ball Valve - 2"	1
*3	FP-46-63	Nipple - 1-1/2" x 1-3/4" Lg. (T.B.E.)	1
**4	FP-43-6	Nipple - 2" x 2" Lg. (T.B.E.)	1
*5	B-223219-1	Motorized Valve - 1-1/2"	1
**6	B-223219-2	Motorized Valve - 2"	1
	*B-223225-1	Drain Valve Assy. (Incls. items #1, 3 & 5)	1
	**B-223225-2	Drain Valve Assy. (Incls. items #2, 4 & 6)	1

*Use with W-26 & W-38.

**Use with W-59.

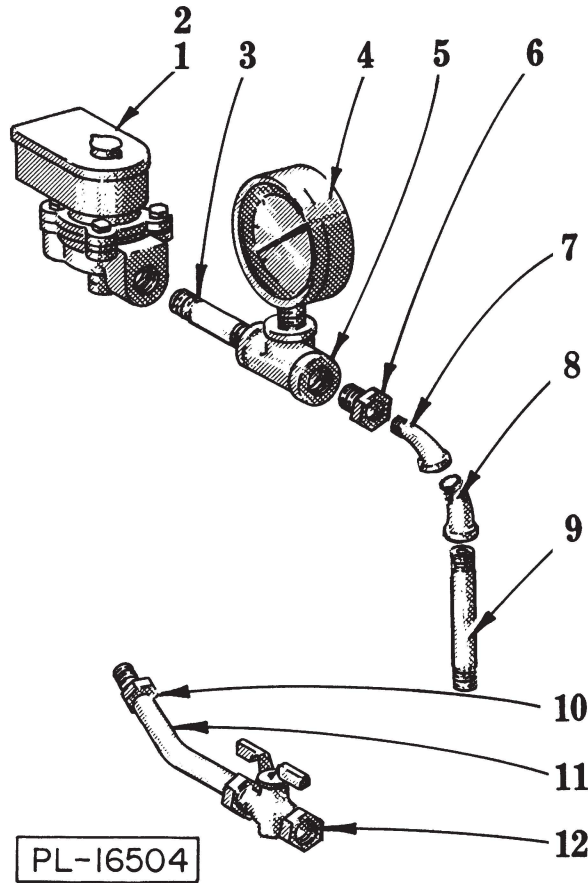


MISCELLANEOUS

ILLUS. PL-15975	PART NO.	NAME OF PART	AMT.
*1	B-222037-8	Guard - Belt	1
**2	B-222037-2	Guard - Belt	1
***3	B-222037-3	Guard - Belt	1
4	SC-21-22	Mach. Screw - #10-24 x 3/8" Rd. Hd	4
5	WL-6-7	Lock Washer - #10 Medium	4
*6	C-223201-1	Bottom Pan - Belt Guard	1
**7	C-223201-2	Bottom Pan - Belt Guard	1
***8	C-223201-3	Bottom Pan - Belt Guard	1
*9	C-216225	Discharge Chute Sub-Assy. (Incls. items #17, 18, 19 & 23)	1
**10	C-216227	Discharge Chute Sub-Assy. (Incls. items #17, 18, 19 & 24)	1
***11	C-216229	Discharge Chute Sub-Assy. (Incls. items #17, 18, 19 & 25)	1
*12	C-223341	Discharge Chute Sub-Assy. (Thru Wall Chute) (Incls. items #20, 21, 22 & 26)	1
**13	C-223342	Discharge Chute Sub-Assy. (Thru Wall Chute) (Incls. items #20, 21, 22 & 27)	1
***14	C-223343	Discharge Chute Sub-Assy. (Thru Wall Chute) (Incls. items #20, 21, 22 & 28)	1
15	SC-67-27	Mach. Screw - 1/4"-20 x 3/8" Ind. Hex Hd	4
16	WL-6-17	Lock Washer - 1/4" Medium	4
17	SC-21-38	Mach. Screw - 1/4"-20 x 1/2" Rd. Hd. (Std. Chute)	2
18	WL-6-17	Lock Washer - 1/4" Medium (Std. Chute)	2
19	NS-15-1	Full Nut - 1/4"-20 Hex Fin. (Std. Chute)	2
20	SC-21-38	Mach. Screw - 1/4"-20 x 1/2" Rd. Hd. (Thru Wall Chute)	2
21	WL-6-17	Lock Washer - 1/4" Medium (Thru Wall Chute)	2
22	NS-15-1	Full Nut - 1/4"-20 Hex Fin. (Thru Wall Chute)	2
*23	B-222060-1	Cover - Discharge Chute	1
**24	B-222060-2	Cover - Discharge Chute	1
***25	C-222060-3	Cover - Discharge Chute	1
*26	B-223346-1	Cover - Discharge Chute (Thru Wall Chute)	1
**27	B-223346-2	Cover - Discharge Chute (Thru Wall Chute)	1
***28	B-223346-3	Cover - Discharge Chute (Thru Wall Chute)	1
29	SC-21-23	Mach. Screw - #10-24 x 1/2" Rd. Hd	4
30	WL-6-7	Lock Washer - #10 Medium	4
31	NS-11-18	Mach. Nut - #10-24 Hex	4

*Use with W-26.
 **Use with W-38.
 ***Use with W-59.

W-26 WATERPRESS REPLACEMENT PARTS



SEAL FLUSH LINE

ILLUS. PL-16504	PART NO.	NAME OF PART	AMT.
	1	Valve - 1/4" Solenoid (Incls. item #2)	1
	2	Solenoid Service Kit	1
	3	Nipple - 1/4" x 2-1/2" Lg. (T.B.E.)	1
	4	Pressure Gauge - 1/4"	1
	5	Tee - 1/4"	1
	6	Bushing - 1/4" to 1/8" Face Reducing	1
	7	Elbow - 1/8" x 90° Street (2 & 3 H.P. Return Pump, L. to R.) (5 H.P. Return Pump, R. to L.)	1
	8	Elbow - 1/8" x 45° Street	1
	9	Nipple - 1/8" x 3" Lg. (T.B.E.)	1
	10	Connector - Straight (1/8" Male Thd. to 1/4" Tube)	1
	11	Tubing - 1/4" x 4" Lg	1
	12	Needle Valve - 1/4" Tube	1