



**CATALOG OF
REPLACEMENT
PARTS**

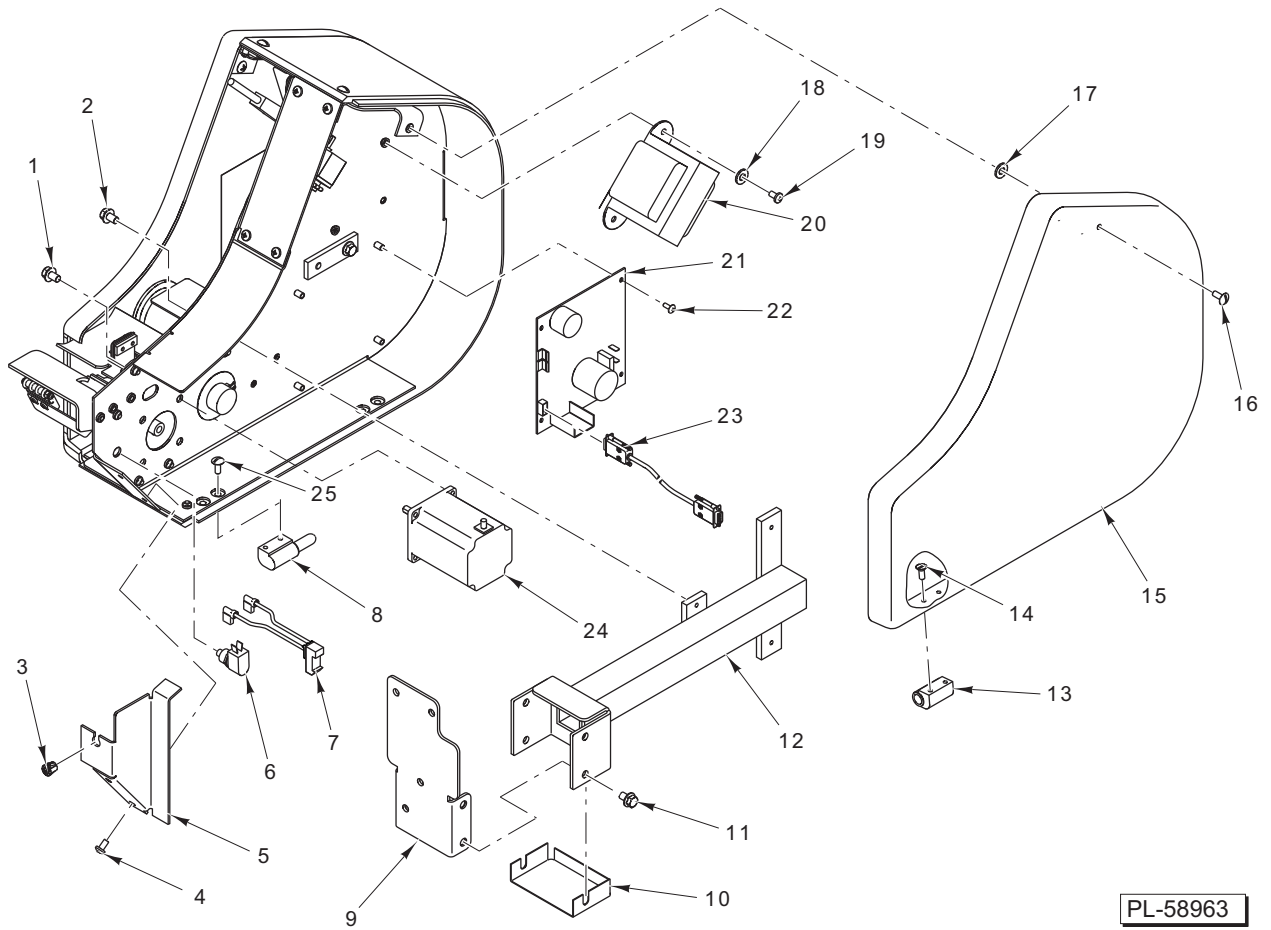
SECURITY LABEL APPLIER

SLA-5A

ML-44206

Table of Contents

5	RIGHT SIDE
6	LEFT SIDE
8	LABEL HOLD DOWN ASSEMBLY

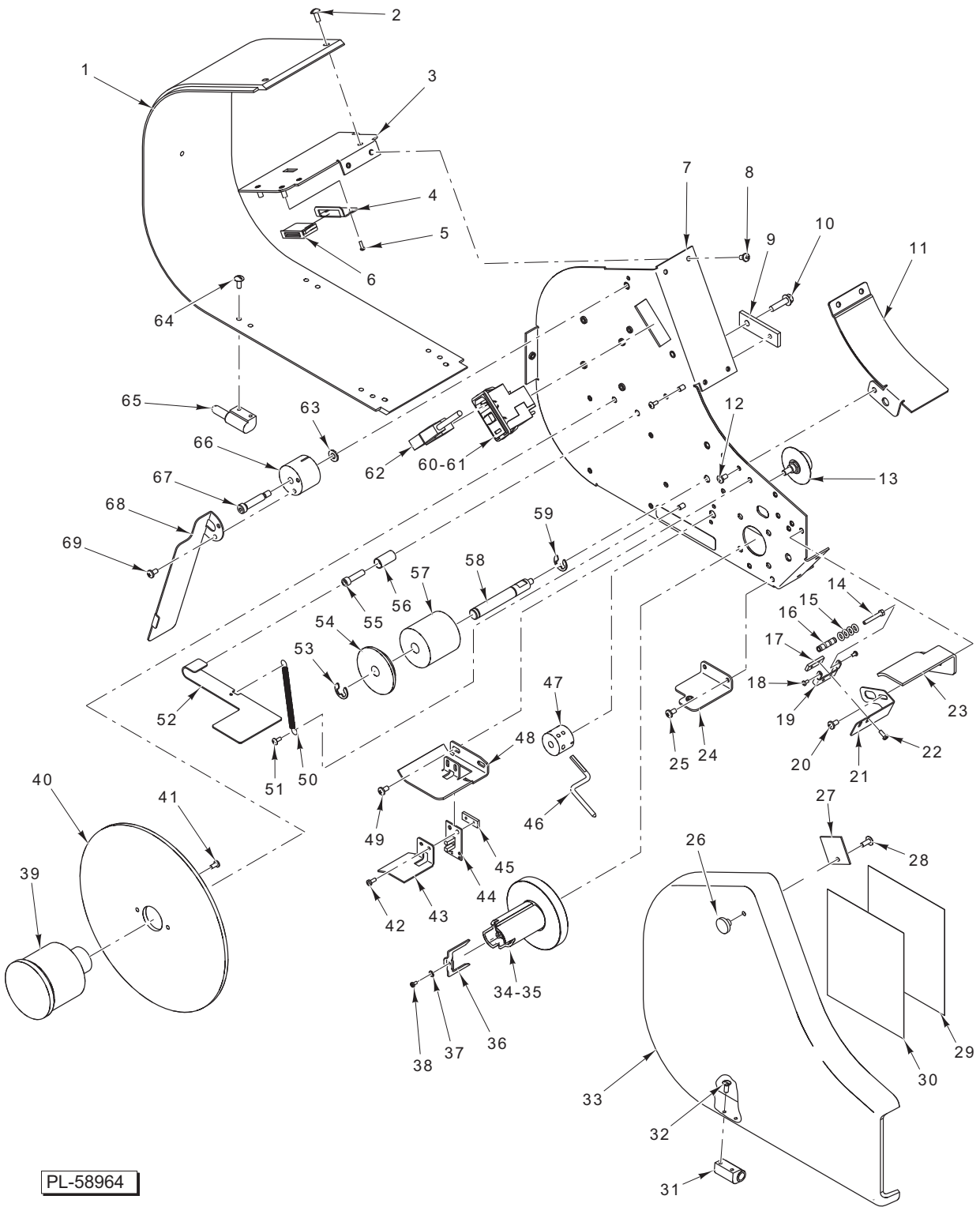


RIGHT SIDE

RIGHT SIDE

ILLUS. PL-58963	PART NO.	NAME OF PART	AMT.
1	SC-100-08	Mach. Screw 1/4-20 x 3/8 Hex Washer Hd.	4
2	SC-093-23	Mach. Screw 10-24 x 3/8 Phil. Pan Hd. (SST)	4
3	FE-026-23	Bushing – Electric	1
4	SC-093-23	Mach. Screw 10-24 x 3/8 Phil. Pan Hd. (SST)	2
5	00-445673	Cover Assy. – Switch	1
6	00-048791	Switch – Push	1
7	00-445861	Cable Assy. – Test Button	1
8	00-048794	Hinge Assy. – Left Hand (Incls. Item 13).....	2
9	00-445698	Bracket – Support Assy.....	1
10	00-445687	Cover – Mount	1
11	SC-100-08	Mach. Screw 1/4-20 x 3/8 Hex Washer Hd.	4
12	00-445664	Post Assy. – Applier	1
13	00-048794	Hinge Assy. – Left Hand (Incls. Item 8).....	2
14	SC-022-19	Mach. Screw 10-24 x 1/2 Slotted Flat Hd. (SST).....	4
15	00-445675	Cover – Motor Side.....	1
16	SC-053-02	Mach. Screw 10-24 x 1/2 Slotted Truss Hd. (SST).....	1
17	00-442732	Washer – Retaining	1
18	WL-006-07	Lockwasher #10 Helical.....	2
19	SC-093-23	Mach. Screw 10-24 x 3/8 Phil. Pan Hd. (SST)	2
20	00-444784	Transformer (115/230 V., 50/60 Hz.).....	1
21	00-440569	Board Assy.	1
22	SC-066-02	Mach. Screw 6-32 x 3/8 Phil. Truss Hd. (SST)	4
23	00-445852	Cable Assy. – Communication	1
24	00-445855	Motor – Stepper	1
25	SC-053-02	Mach. Screw 10-24 x 1/2 Slotted Truss Hd. (SST).....	4

SECURITY LABEL APPLIER REPLACEMENT PARTS

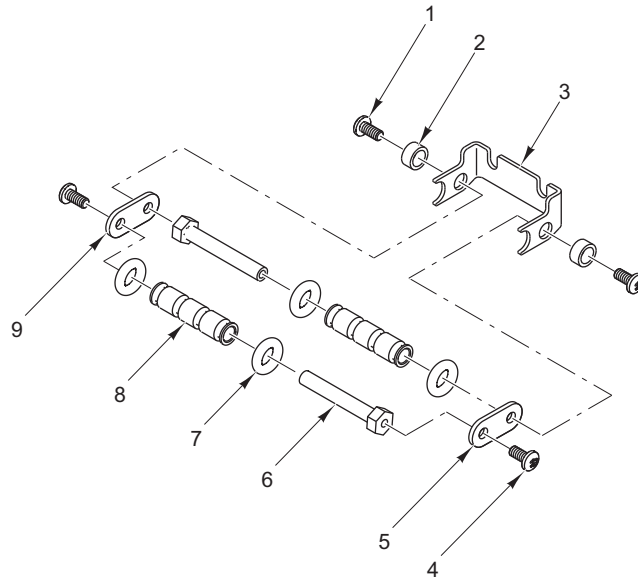


LEFT SIDE

ILLUS.	PART NO.	NAME OF PART	AMT.
1	00-445669	Cover – Middle.....	1
2	SC-053-02	Mach. Screw 10-24 x 1/2 Slotted Truss Hd. (SST).....	5
3	00-445680	Bracket Assy. – Rear.....	1
4	00-445695	Plate – Latch.....	1
5	SC-125-30	Mach. Screw 4-40 x 3/8 Phil. Pan Hd.....	2

LEFT SIDE (CONT.)

ILLUS.	PART NO.	NAME OF PART	AMT.
	PL-58964		
6	00-041725	Catch – Magnetic.....	1
7	00-445668	Frame Assy. – Main	1
8	SC-093-23	Mach. Screw 10-24 x 3/8 Phil. Pan Hd. (SST)	4
9	00-445689	Mount – Supply Hub	1
10	SC-123-93	Mach. Screw 1/4-20 x 1 Hex Washer Hd.	1
11	00-445671	Pan – Belly.....	1
12	SC-093-23	Mach. Screw 10-24 x 3/8 Phil. Pan Hd. (SST)	1
13	00-049470	Potentiometer Assy.	1
14	00-443774	Shaft – Wheel Mounting Label.....	2
15	00-441580-00003	O-Ring	4
16	00-443799	Sleeve – Hold Down Wheel	2
17	00-042521	Plate – Nut	1
18	SC-129-40	Mach. Screw 4-40 x 1/4 Phil. Pan Hd.....	2
19	00-445684	Bracket – Label Release.....	1
20	SC-093-23	Mach. Screw 10-24 x 3/8 Phil. Pan Hd. (SST)	2
21	00-445678	Bracket – Roller	1
22	SC-018-29	Mach. Screw 6-32 x 3/8 Phil. Pan Hd.....	2
23	00-445696	Bar – Peel	1
24	00-445896	Cover – Bracket Assy.....	1
25	SC-093-23	Mach. Screw 10-24 x 3/8 Phil. Pan Hd. (SST)	2
26	00-441639	Knob – Door.....	1
27	00-445697	Plate – Door Latch	1
28	SC-066-20	Mach. Screw 10-32 x 1/2 Phil. Truss Hd. (SST)	1
29	00-445888	Label – Threading Diagram (Checkpoint)	1
30	00-445889	Label – Threading Diagram (Sensormatic)	1
31	00-048793	Hinge Assy. – Right Hand (Incls. Item 65)	2
32	SC-022-19	Mach. Screw 10-24 x 1/2 Slotted Flat Hd. (SST).....	4
33	00-445674	Cover – Label Side	1
34	SC-047-73	Set Screw 8-32 x 3/16 Hex Hdls.	1
35	00-445716	Take Up Assy. (Incls. Items 34, 36, 37, & 38)	1
36	00-444789	Key – Take Up.....	1
37	WL-013-05	Lockwasher #6 Internal.....	1
38	SC-018-28	Mach. Screw 6-32 x 1/4 Phil. Pan Hd.....	1
39	00-048774	Spool – Label Roll.....	1
40	00-445692	Disc – Label Roll Tension.....	1
41	SC-018-31	Mach. Screw 8-32 x 3/8 Phil. Pan Hd.....	2
42	SC-018-29	Mach. Screw 6-32 x 3/8 Phil. Pan Hd.....	2
43	00-445670	Guide	1
44	00-047293	Board – Sensor Circuit.....	1
45	00-042521	Plate – Nut	1
46	00-441637	Rod – Delay Arm.....	1
47	00-048784	Coupling – Delay Arm	1
48	00-445679	Bracket – Sensor	1
49	SC-093-23	Mach. Screw 10-24 x 3/8 Phil. Pan Hd. (SST)	2
50	00-444524	Spring	1
51	SC-066-02	Mach. Screw 6-32 x 3/8 Phil. Truss Hd. (SST)	1
52	00-445699	Paddle – Tension	1
53	RR-010-12	Retaining Ring	1
54	00-445682	Guide – Backing Paper	1
55	SC-059-30	Cap Screw 1/4-20 x 1 Hex Socket Hd. (SST).....	1
56	00-445688	Tensioner – Pivot	1
57	00-445672	Roller Assy.	1
58	00-445681	Stud – Idler	1
59	RR-010-12	Retaining Ring	1
60	00-441068-00001	Module Assy. – Power Input (Incls. Item 61).....	1
61	FE-022-29	Fuse (1 Amp., 250 V.)	1
62	00-445727	Cord – Power	1
63	WS-003-49	Washer (SST)	1
64	SC-053-02	Mach. Screw 10-24 x 1/2 Slotted Truss Hd. (SST).....	4
65	00-048793	Hinge Assy. – Right Hand (Incls. Item 31)	2
66	00-445693	Hub – Label Tension	1
67	SC-124-55	Shoulder Screw 1/4-20 x 1 1/4 Hex Socket Hd.	1
68	00-445694	Guide – Label	1
69	SC-093-23	Mach. Screw 10-24 x 3/8 Phil. Pan Hd. (SST)	2



PL-59029

LABEL HOLD DOWN ASSEMBLY

ILLUS.	PART NO.	NAME OF PART	AMT.
1	SC-129-40	Mach. Screw 4-40 x 1/4 Phil. Pan Hd.....	2
2	00-444605	Spacer – Label Hold Down Pivot.....	2
3	00-444603	Bracket – Label Hold Down	1
4	SC-129-40	Mach. Screw 4-40 x 1/4 Phil. Pan Hd.....	2
5	00-445316	Bracket – Short Roller Hold Down.....	1
6	00-443774	Shaft – Wheel Mounting Label.....	2
7	00-441580-00003	O-Ring	4
8	00-443799	Sleeve – Hold Down Wheel.....	2
9	00-445316	Bracket – Short Roller Hold Down.....	1