



CATALOG OF REPLACEMENT PARTS



Model SLA-1 Shown

SECURITY LABEL APPLIER

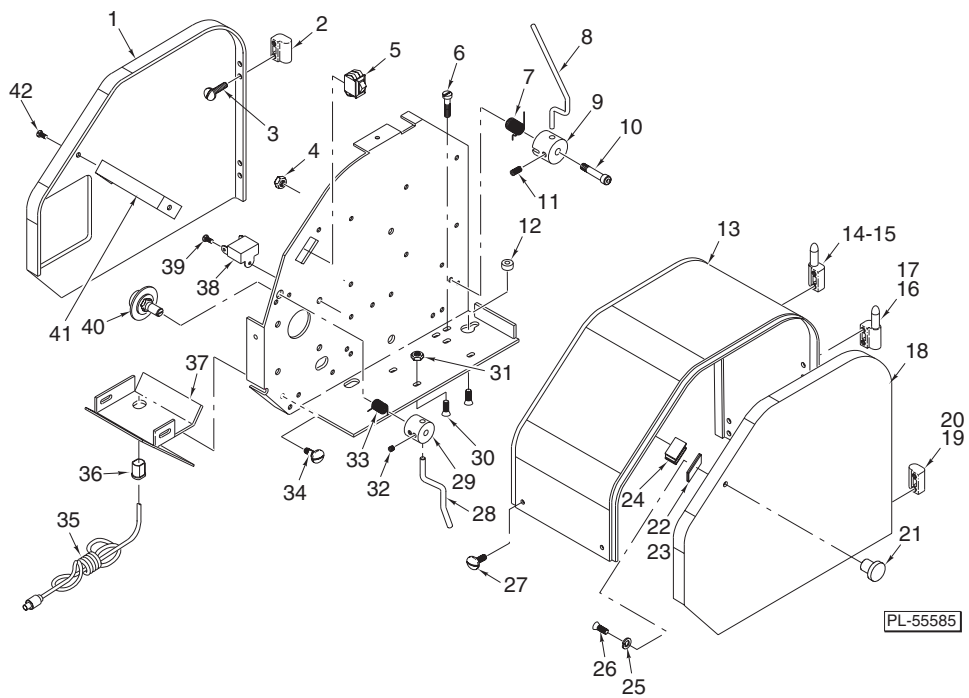
SLA-1, SLA-2	ML-44180
SLA-3	ML-44192

Table of Contents

Page	Description
5	Interior Assembly SLA-1, SLA-2 (ML-44180)
7	Housing Unit SLA-1, SLA-2 (ML-44180)
9	Interior Assembly SLA-3 (ML-44192)
11	Housing Unit SLA-3 (ML-44192)

**INTERIOR ASSEMBLY
SLA-1, SLA-2 (ML-44180)**

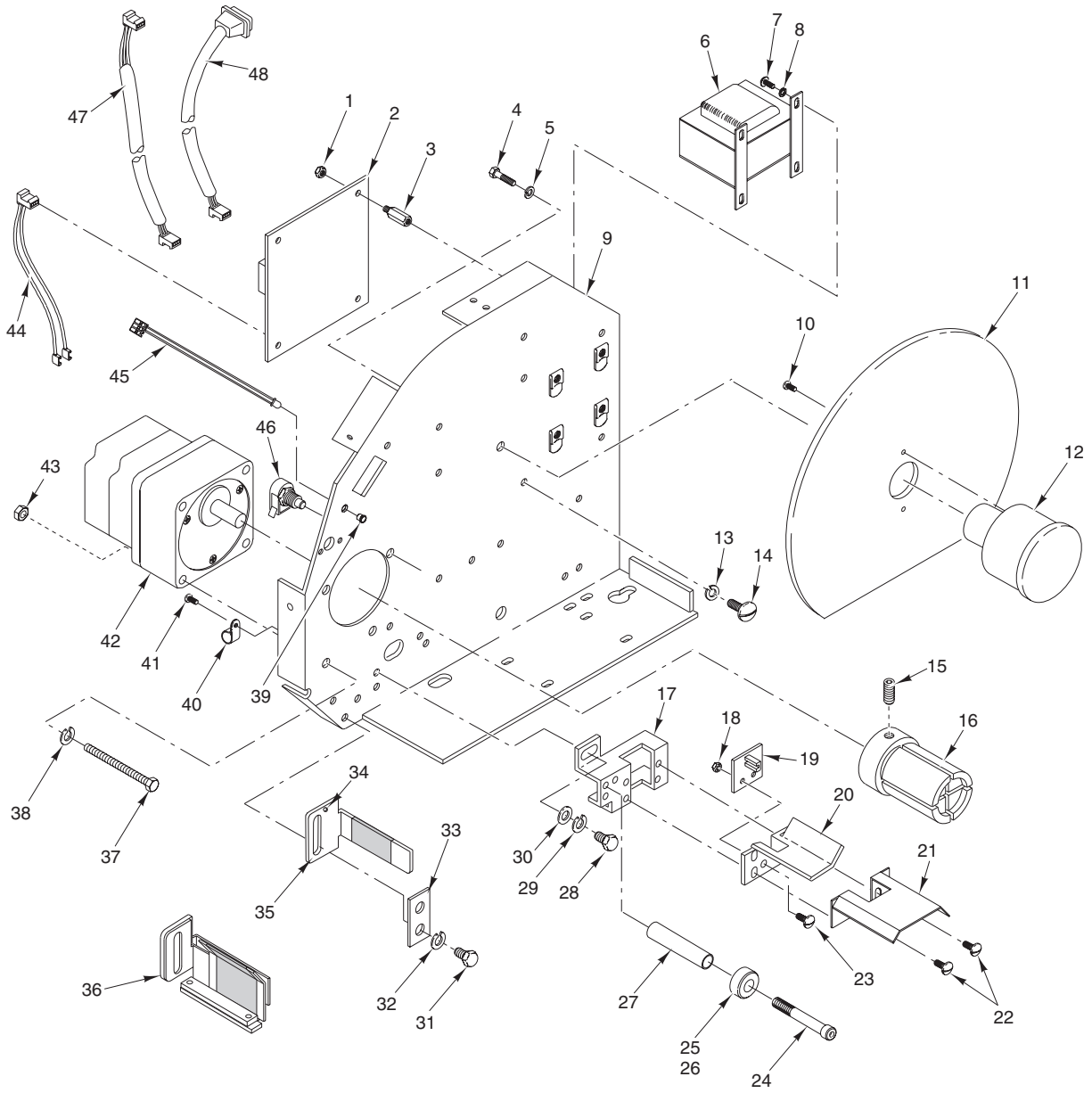
ILLUS. PL-55584	PART NO.	NAME OF PART	AMT.
1	NS-044-05	Nut Assy. 6-32 Hex KEPS	4
2	00-049469	Board Assy	1
3	00-258301-00005	Standoff	4
4	SC-123-88	Mach. Screw 8-32 x 5/16 Slotted Truss Hd. (SST)	3
5	FE-023-15	Clamp – Elect. 1/4	3
6	00-048771	Frame – Label Applicator	1
7	WL-006-42	Lockwasher #6 Medium (SST)	4
8	SC-124-01	Mach. Screw 6-32 x 3/8 Slotted Truss Hd. (SST)	4
9	SC-124-02	Mach. Screw 8-32 x 1/2 Slotted Truss Hd. (SST)	2
10	00-048773	Disc – Label Roll Tension	1
11	00-048774	Spool – Label Roll	1
12	NS-044-07	Nut Assy. 8-32 Hex KEPS	2
13	SC-119-52	Mach. Screw 8-32 x 5/8 Slotted Pan Hd. (SST)	3
14	NS-044-05	Nut Assy. 6-32 Hex KEPS	1
15	SC-124-03	Set Screw 1/4-28 x 3/4 Hex Hdls., Cup Pt.	3
16	00-048783	Spool – Take-Up	1
17	00-048803	Bracket – Sensor	1
18	NS-044-05	Nut Assy. 6-32 Hex KEPS	1
19	00-047293	Board – Circuit Sensor	1
20	00-048768	Bracket – Sensor Mounting	1
21	00-441030	Bracket – Label Guide	1
22	SC-110-97	Mach. Screw 10-32 x 1/2 Slotted Truss Hd. (SST)	4
23	SC-124-01	Mach. Screw 6-32 x 3/8 Slotted Truss Hd. (SST)	4
24	00-049689	Shoulder Bolt	1
25	00-047353	Collar Assy. (Incls. Item 26)	1
26	SC-075-10	Set Screw 1/4-20 x 3/16 Hex Hdls., Cup Pt.	1
27	00-048772	Pin – Sensor Guide	1
28	SC-118-19	Cap Screw 1/4-20 x 3/4 Hex Hd.	2
29	WL-006-17	Lockwasher 1/4 Medium (SST)	2
30	WS-022-21	Washer	2
31	SC-118-19	Cap Screw 1/4-20 x 3/4 Hex Hd.	2
32	WL-006-17	Lockwasher 1/4 Medium (SST)	2
33	WS-022-21	Washer 1/4	2
34	00-049424	Washer Plate	1
35	00-442035	Bracket – Stripper Guide (Check Point) (Incls. Item 36)	1
36	SC-125-19	Set Screw 10-32 x 1/4 Hex Hdls., Cup Pt. (SST)	1
37	00-048779	Bracket Assy. – Stripper Guide (Sensormatic) (Incls. Item 36)	1
38	SC-118-57	Cap Screw 1/4-20 x 2 1/2 Hex Hd.	4
39	00-049867	Gear Motor Assy.	1
40	WL-006-17	Lockwasher 1/4 Medium (SST)	4
41	NS-015-01	Nut 1/4-20 Hex (SST)	4
42	00-048791	Switch – Push	1
43	WL-006-17	Lockwasher 1/4 Medium (SST)	1
44	SC-118-19	Cap Screw 1/4-20 x 3/4 Hex Hd.	1
45	00-049423	Cable Assy. – Test Button	1
46	FE-023-09	Fuse (1 Amp.)	1
47	SC-124-01	Mach. Screw 6-32 x 3/8 Slotted Truss Hd. (SST)	1
48	00-047354	Fuse Block	1
49	WL-006-02	Lockwasher #8 (SST)	1
50	SC-123-88	Mach. Screw 8-32 x 5/16 Slotted Truss Hd. (SST)	1
51	00-046569	Resistor	1
52	00-048806	Bracket – Resistor	1
53	00-049397	Board Assy. – Interface (Ultima)	1
54	00-049694	Cable Assy. – Interconnect (Ultima)	1
55	00-440093	Cable Assy. – Interconnect (Quantum)	1
56	00-049714	Board Assy. – Interface (Quantum)	1
	00-440899	Teflon Tape 2 1/2 In. (10 Yd. Roll)	AR



**HOUSING UNIT
SLA-1, SLA-2 (ML-44180)**

HOUSING UNIT SLA-1, SLA-2 (ML-44180)

ILLUS. PL-55585	PART NO.	NAME OF PART	AMT.
1	00-048776	Cover – Motor Side	1
2	00-048794	Hinge Assy. (LH) (Incls. Item 14)	AR
3	SC-114-99	Mach. Screw 10-32 x 1/2 Phil. Flat Hd. (SST)	2
4	NS-037-10	Lock Nut 1/4-20 Special Nylok	1
5	00-047298	Rocker Switch – On/Off	1
6	SD-009-41	Self-Tapping Screw 8-32 x 3/8 Phil. Pan Hd., Type F (SST)	4
7	00-049486	Spring – Tension Arm	1
8	00-049485	Rod – Tension Arm	1
9	00-049484	Coupling – Tension Arm	1
10	SC-124-55	Shoulder Screw 1/4-20 x 1 1/4 Soc. Hd.	1
11	SC-047-82	Set Screw 10-32 x 3/16 Hex Hdls., Cup Pt.	1
12	00-048786	Adapter – Key Slot	1
13	00-048787	Cover – Middle	1
14	00-048794	Hinge Assy. (LH) (Incls. Item 2)	AR
15	SC-021-23	Mach. Screw 10-24 x 1/2 Slotted Rd. Hd. (SST)	2
16	00-048793	Hinge Assy. (RH) (Incls. Item 20)	AR
17	SC-021-23	Mach. Screw 10-24 x 1/2 Slotted Rd. Hd. (SST)	2
18	00-048775	Cover – Lable Side	1
19	SC-114-99	Mach. Screw 10-32 x 1/2 Phil. Flat Hd. (SST)	2
20	00-048793	Hinge Assy. (RH) (Incls. Item 16)	AR
21	00-441639	Knob (Late SLA-2) (Used With Item 23)	1
22	00-049690	Strike Plate (With Adhesive Tape) (SLA-1 & Early SLA-2)	1
23	00-442037	Plate – Strike Magnet (Late SLA-2) (Use With Item 21)	1
24	00-049691	Catch	1
25	WL-006-07	Lockwasher #10 (SST)	1
26	SC-110-97	Mach. Screw 10-32 x 1/2 Slotted Truss Hd. (SST)	1
27	SC-124-02	Mach. Screw 8-32 x 1/2 Slotted Truss Hd. (SST)	5
28	00-048785	Rod – Arm Delay	1
29	00-048784	Coupling – Arm Delay	1
30	SC-124-68	Mach. Screw 10-32 x 3/8 Phil. Flat Hd. (SST)	4
31	NS-048-19	Nut 10-32 Hex KEPS	4
32	SC-047-82	Set Screw 10-32 x 3/16 Hex Hdls., Cup Pt.	2
33	00-048795	Spring – Torsion	1
34	SC-124-02	Mach. Screw 8-32 x 1/2 Slotted Truss Hd. (SST)	1
35	00-046512	Power Cord Assy.	1
36	FE-025-53	Strain Relief	1
37	00-048782	Plate – Power Cord	1
38	00-048790	Capacitor	1
39	SC-123-88	Mach. Screw 8-32 x 5/16 Slotted Truss Hd. (SST)	1
40	00-049470	Potentiometer Assy. (20k ohms)	1
41	00-048804	Bracket – Door Mount	1
42	SC-124-02	Mach. Screw 8-32 x 1/2 Slotted Truss Hd. (SST)	2
	00-049344	Table Assy. Label (Long)	1
	00-048797	Label – Threading Diagram (Sensormatic)	1
	00-048800	Label – Threading Diagram (Check Point)	1

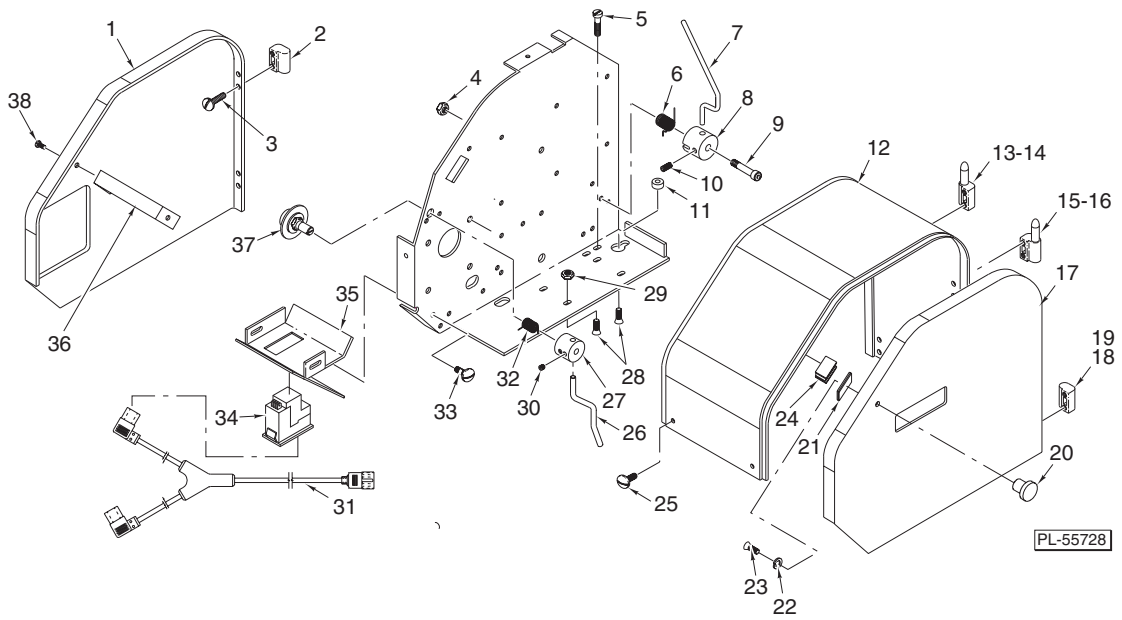


PL-55729

**INTERIOR ASSEMBLY
SLA-3 (ML-44192)**

**INTERIOR ASSEMBLY
SLA-3 (ML-44192)**

ILLUS. PL-55729	PART NO.	NAME OF PART	AMT.
1	NS-044-05	Nut Assy. 6-32 Hex KEPS	4
2	00-440569	Board Assy.	1
3	00-258301-00005	Standoff	4
4	SC-118-19	Cap Screw 1/4-20 x 3/4 Hex Hd.	1
5	WL-006-17	Lockwasher 1/4 Medium (SST)	1
6	00-441147	Transformer Assy.	1
7	SC-113-88	Mach. Screw 10-32 x 5/8 Slotted Hex Washer Hd.	4
8	WL-007-12	Lockwasher #10 External	4
9	00-048771	Frame – Label Applicator	1
10	SC-124-02	Mach. Screw 8-32 x 1/2 Slotted Truss Hd. (SST)	2
11	00-048773	Disc – Label Roll Tension	1
12	00-048774	Spool – Label Roll	1
13	WL-006-42	Lockwasher #6 (SST)	4
14	SC-124-01	Mach. Screw 6-32 x 3/8 Slotted Truss Hd. (SST)	4
15	SC-124-03	Set Screw 1/4-28 x 3/4 Hex Hdls., Cup Pt.	3
16	00-441636	Spool – Take-Up	1
17	00-048803	Bracket – Sensor	1
18	NS-044-05	Nut Assy. 6-32 Hex KEPS	2
19	00-047293	Board – Circuit Sensor	1
20	00-048768	Bracket – Sensor Mounting	1
21	00-441030	Bracket – Guide Label	1
22	SC-110-97	Mach. Screw 10-32 x 1/2 Slotted Truss Hd. (SST)	2
23	SC-124-01	Mach. Screw 6-32 x 3/8 Slotted Truss Hd. (SST)	2
24	00-049689	Bolt – Shoulder	1
25	00-047353	Collar Assy. (Incls. Item 26)	1
26	SC-075-10	Set Screw 1/4 -20 x 3/16 Hex Hdls., Cup Pt.	1
27	00-048772	Pin – Sensor Guide	1
28	SC-118-19	Cap Screw 1/4-20 x 3/4 Hex Hd.	2
29	WL-006-17	Lockwasher 1/4 Medium (SST)	2
30	WS-022-21	Washer 1/4	2
31	SC-118-19	Cap Screw 1/4 -20 x 3/4 Hex Hd.	2
32	WL-006-17	Lockwasher 1/4 Medium (SST)	2
33	00-049424	Plate – Washer	1
34	SC-125-19	Set Screw 10-32 x 1/4 Hex Hdls., Cup Pt. (SST)	1
35	00-442035	Bracket Assy. – Stripper Guide (Check Point) (Incls. Item 34)	1
36	00-048779	Bracket – Stripper Guide (Sensomatic) (Incls. Item 34)	1
37	SC-123-89	Mach. Screw 8-32 x 3/4 Slotted Truss Hd. (SST)	4
38	WL-006-07	Lockwasher #10 (SST)	4
39	00-441461	Clip & Retaining Ring	1
40	FE-023-15	Clamp – Electrical	3
41	SC-123-88	Mach. Screw 8-32 x 5/16 Slotted Truss Hd. (SST)	4
42	00-441799-00001	Stepper Motor Assy.	1
43	NS-044-07	Nut Assy. 8-32 KEPS	4
44	00-049423	Cable Assy. – Test Button	1
45	00-441456	LED Assy.	1
46	00-048791	Switch – Push	1
47	00-049694	Cable Assy. – Interconnect (Ultima)	1
48	00-440093	Cable Assy. – Interconnect (Quantum)	1
	00-440899	Teflon Tape 2 1/2 In. (10 Yd. Roll)	AR



**HOUSING UNIT
SLA-3 (ML-44192)**

HOUSING UNIT SLA-3 (ML-44192)

ILLUS. PL-55728	PART NO.	NAME OF PART	AMT.
1	00-048776	Cover – Motor Side	1
2	00-048794	Hinge Assy. (LH) (Incls. Item 13)	AR
3	SC-114-99	Mach. Screw 10-32 x 1/2 Phil. Flat Hd. (SST)	2
4	NS-037-10	Lock Nut 1/4-20 Special Nylok	1
5	SD-009-41	Self-Tapping Screw 8-32 x 3/8 Pan Hd., Type F (SST)	4
6	00-049486	Spring – Tension Arm	1
7	00-049485	Rod – Tension Arm	1
8	00-049484	Coupling – Tension Arm	1
9	SC-124-55	Shoulder Screw 1/4-20 x 1 1/4 Soc. Hd.	1
10	SC-047-82	Set Screw 10-32 x 3/16 Hex Hdls., Cup Pt.	1
11	00-048786	Adapter – Key Slot	1
12	00-048787	Cover – Middle	1
13	00-048794	Hinge Assy. (LH) (Incls. Item 2)	AR
14	SC-021-23	Mach. Screw 10-24 x 1/2 Slotted Rd. Hd.(SST)	2
15	00-048793	Hinge Assy. (RH) (Incls. Item 19)	AR
16	SC-021-23	Mach. Screw 10-24 x 1/2 Slotted Rd. Hd. (SST)	2
17	00-048775	Cover – Label Side	1
18	SC-114-99	Mach. Screw 10-32 x 1/2 Flat Hd.	2
19	00-048793	Hinge Assy. (RH) (Incls. Item 15)	AR
20	00-441639	Knob	1
21	00-442037	Strike Plate	1
22	WL-006-07	Lockwasher #10 (SST)	1
23	SC-110-97	Mach. Screw 10-32 x 1/2 Slotted Truss Hd. (SST)	1
24	00-049691	Catch	1
25	SC-124-02	Mach. Screw 8-32 x 1/2 Slotted Truss Hd. (SST)	8
26	00-441637	Rod – Arm Delay	1
27	00-048784	Coupling – Arm Delay	1
28	SC-124-68	Mach. Screw 10-32 x 3/8 Phil. Flat Hd. (SST)	4
29	NS-048-19	Nut 10-32 Hex KEPS	4
30	SC-047-82	Set Screw 10-32 x 3/16 Hex Hdls., Cup Pt.	2
31	00-441487	Power Cord Assy.	1
32	00-048795	Spring – Torsion	1
33	SC-124-02	Mach. Screw 8-32 x 1/2 Slotted Truss Hd. (SST)	2
34	00-441068-00001	Module Assy. – Power Input	1
35	00-441638	Plate – Power Cord	1
36	00-048804	Bracket – Door Mount	1
37	00-441589	Potentiometer Assy. (10k ohms)	1
38	SC-124-02	Mach. Screw 8-32 x 1/2 Slotted Truss Hd. (SST)	2
	00-049344	Table Assy. – Label (Long)	1
	00-441033	Table Assy. – Label (Long) (Wide Printer)	1
	00-048797	Label – Threading Diagram (Sensormatic)	1
	00-048800	Label – Threading Diagram (Check Point)	1

