



CATALOG OF REPLACEMENT PARTS

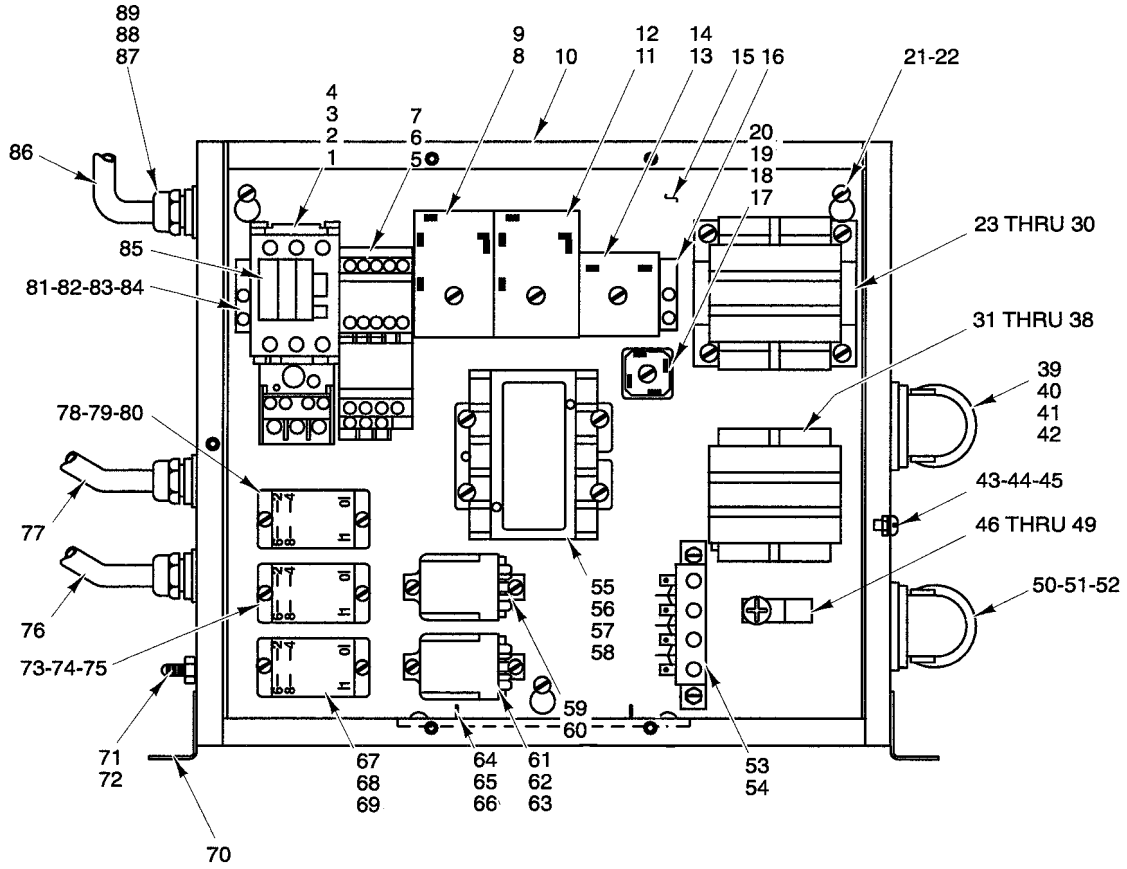
MG1532HD MIXER-GRINDER

ML-104668



Table of Contents

5	CONTROL BOX UNIT
9	OPERATOR CONTROL PANEL
11	TOP COVER UNIT
13	HINGE UNIT
15	CONVEYOR & MIXING ARM UNIT
17	FRAME & HOPPER UNIT
19	MIX MOTOR UNIT
21	GRIND MOTOR UNIT
23	TRANSMISSION UNIT
25	FOOT SWITCH UNIT
27	#32 GRINDER UNIT



PL-52763

CONTROL BOX UNIT

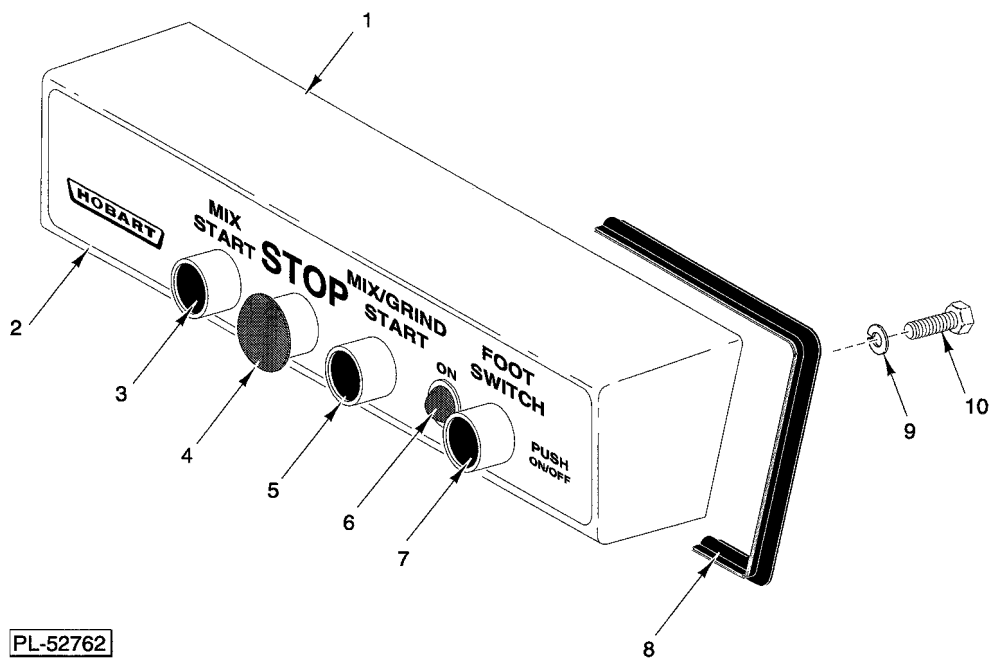
CONTROL BOX UNIT

ILLUS. PL-52763	PART NO.	NAME OF PART	AMT.
1	87713-94-2	Contactora (50 A., 3 Pole)(208 V.).....	1
2	87713-94-3	Contactora (240/480 V.).....	1
3	88196-24-1	Relay - Overload (208/408 V.).....	1
4	88196-24-2	Relay - Overload (480 V.).....	1
5	87713-89-2	Contactora (220/230 V.).....	1
6	88196-17-1	Relay - Overload (208/240 V.).....	1
7	88196-17-2	Relay - Overload (480 V.).....	1
8	87714-48-1	Relay - Time Delay, 3 Sec.....	1
9	478219	Bracket - Din Mounting.....	1
10	477925-1	Box - Lower Control.....	1
11	87714-48-2	Relay - Time Delay.....	1
12	478219	Bracket - Din Mounting.....	1
13	87714-49-1	Timer - Solid State.....	1
14	478219	Bracket - Din Mounting.....	1
15	477932	NLA - Obsolete--Plate - Control Mounting.....	1
16	478218	Rail - Stop.....	2
17	478223	Bridge - Full Wave.....	1
18	SC-60-87	Mach. Screw 10-32 x 3/4 Rd. Hd.....	1
19	WL-7-12	Lockwasher 10 External Shakeproof.....	1
20	NS-9-30	Mach. Nut 10-32 Hex.....	1
21	SC-8-9	Mach. Screw 10-24 x 3/8 Rd. Hd.....	3
22	WL-7-12	Lockwasher 10 External Shakeproof.....	3
23	294500-31-1	Transformer 200 A.....	1
24	FE-25-49	Fuse 600 V., 2 A.....	2
25	FE-25-50	Fuse 600 V., 20 A.....	1
26	477566	Cover - Transformer (IEC Type C).....	2
27	478217	Fuse - Puller.....	3
28	SC-8-17	Mach. Screw 10-32 x 3/8 Rd. Hd.....	4
29	WL-7-12	Lockwasher 10 External Shakeproof.....	4
30	NS-9-30	Mach. Nut 10-32 Hex.....	1
31	294500-32-1	Transformer 50 A. (480 V.).....	1
32	FE-25-49	Fuse 600 V., 2 A.....	1
33	FE-25-50	Fuse 600 V., 20 A.....	1
34	477566	Cover - Transformer (IEC Type C).....	1
35	478217	Fuse - Puller.....	1
36	SC-8-17	Mach. Screw 10-32 x 3/8 Rd. Hd.....	1
37	WL-7-12	Lockwasher 10 External Shakeproof.....	1
38	NS-9-30	Mach. Nut 10-32 Hex.....	1
39	294853-19	Cable - Motor Control.....	1
40	FE-23-41	Strain Relief.....	1
41	FE-6-50	Lock-Nut.....	1
42	FE-8-12	Gasket.....	2
43	SC-8-17	Mach. Screw 10-32 x 3/8 Rd. Hd.....	2
44	WL-7-12	Lockwasher 10 External Shakeproof.....	1
45	NS-9-30	Mach. Nut 10-32 Hex.....	1
46	FE-23-87	NLA - Obsolete--Lug - Grounding.....	1
47	SC-114-29	Mach. Screw 1/4-20 x 3/8 Phil. Pan Hd.....	1
48	WL-7-14	NLA - Obsolete--Lockwasher 1/4 Medium.....	1
49	NS-46-53	Mach. Nut 1/4-20 Hex.....	1
50	FE-23-42	Strain Relief.....	1
51	FE-6-50	Lock-Nut.....	1
52	FE-8-12	Gasket Assy.....	1
53	294325-19	Fuse - Puller.....	1
54	SD-32-1	Self-Tapping Screw #1 0-24 x 3/8 Hex Hd., Type F.....	2
55	87713-99-1	Contactora.....	1

CONTROL BOX UNIT

ILLUS.	PART NO.	NAME OF PART	AMT.
56	SC-8-17	Mach. Screw 10-32 x 3/8 Rd. Hd.....	4
57	WL-7-12	Lockwasher 10 External Shakeproof.....	4
58	NS-9-30	Mach. Nut 10-32 Hex.....	4
59	87714-20-3	Relay - 3PDT.....	1
60	SD-9-9	Self-Tapping Screw 8-32 x 1/2 Binding Hd., Type F.....	2
61	87714-50-1	Relay SPST - NO (208/240 V.).....	1
62	87714-50-2	Relay SPST - NO (480 V.).....	1
63	SD-9-9	Self-Tapping Screw 8-32 x 1/2 Binding Hd., Type F.....	2
64	478220-1	Heater.....	1
65	SC-8-9	Mach. Screw 10-24 x 3/8 Rd. Hd.....	2
66	WL-7-12	Lockwasher 10 External Shakeproof.....	2
67	87714-46-2	Relay - 2 Pole (30 Amp.)(208 V.).....	1
68	87714-46-3	Relay - 2 Pole (30 Amp.)(208/480 V.).....	1
69	SD-9-9	Self-Tapping Screw 8-32 x 1/2 Binding Hd., Type F.....	2
70	186708	Bracket - Mounting.....	2
71	87711-213-1	Switch - Air Actuated.....	1
72	294855-1	Cap.....	1
73	87714-42-2	Relay - 2 Pole (208 V.).....	1
74	87714-42-3	Relay (2 Pole)(240/480 V.).....	1
75	SD-9-9	Self-Tapping Screw 8-32 x 1/2 Binding Hd., Type F.....	2
76	294853-21	Cable - Control Switch.....	1
77	294853-20	Cable - Motor Control.....	1
78	87714-42-2	Relay - 2 Pole (208 V.).....	1
79	87714-42-3	Relay (2 Pole)(240/480 V.).....	1
80	SD-9-9	Self-Tapping Screw 8-32 x 1/2 Binding Hd., Type F.....	2
81	477300-2	Rail - Din.....	1
82	SC-8-17	Mach. Screw 10-32 x 3/8 Rd. Hd.....	2
83	WL-7-12	Lockwasher 10 External Shakeproof.....	2
84	NS-9-30	Mach. Nut 10-32 Hex.....	2
85	87711-268-1	Switch - Auxillary.....	2
86	294853-22	Cable - Interlock.....	1
87	FE-6-49	Strain Relief (T & B 2522).....	3
88	FE-6-5	Lock Nut 1/2.....	3
89	FE-8-10	1/2 Gasket Assy.....	3
	477954	Cover Assy. - Control Box.....	1
	SD-36-39	Self-Tapping Screw 10-24 x 3/8 Truss Hd, Type TT.....	6

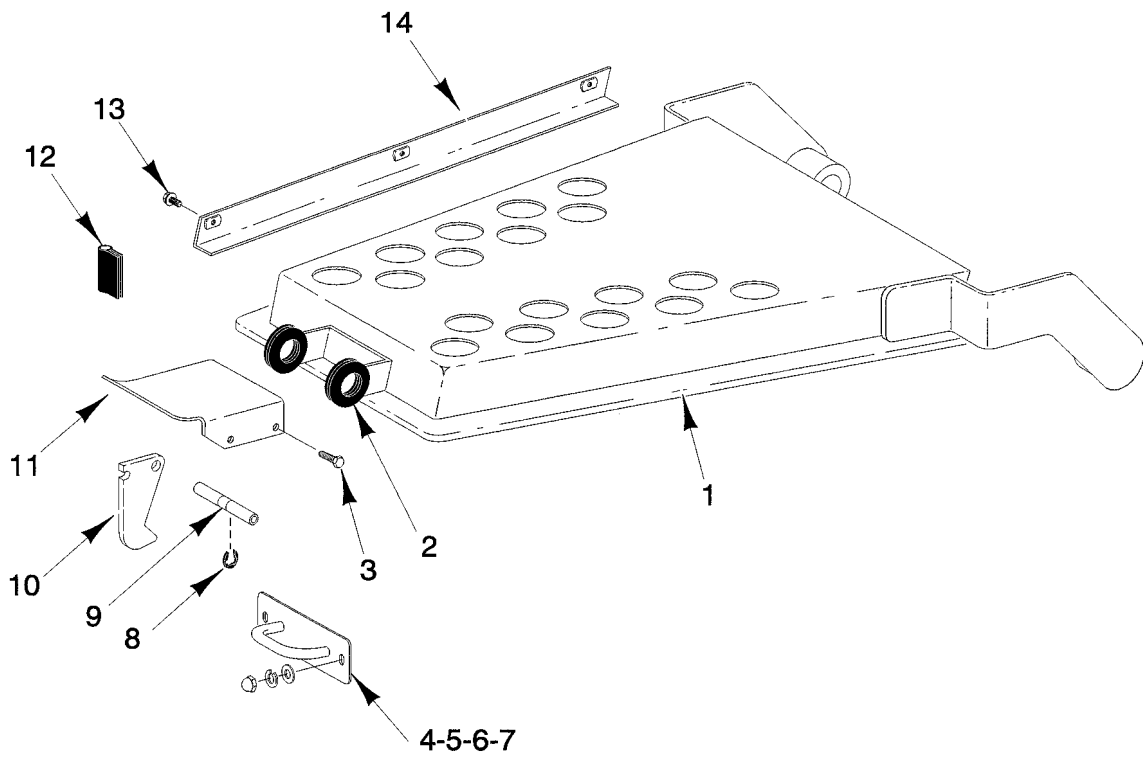
NOTES



OPERATOR CONTROL PANEL

OPERATOR CONTROL PANEL

ILLUS.	PART NO.	NAME OF PART	AMT.
PL-52762			
1	439760	Box - Operator Control.....	1
2	477930	Panel - Trim.....	1
3	87711-255-6	Switch Assy. (Mix/Start).....	1
4	87711-255-7	Switch - Stop.....	1
5	87711-255-6	Switch Assy. (Mix/Grind).....	1
6	477653-2	Light - Pilot.....	1
7	87711-255-6	Switch Assy. (Foot).....	1
8	102825-6	Gasket - Housing.....	1
9	WL-6-17	Lockwasher 1/4 Medium.....	4
10	SC-41-1	Cap Screw 1/4-20 x 3/4 Hex Hd.....	4
	439785	Cable.....	1

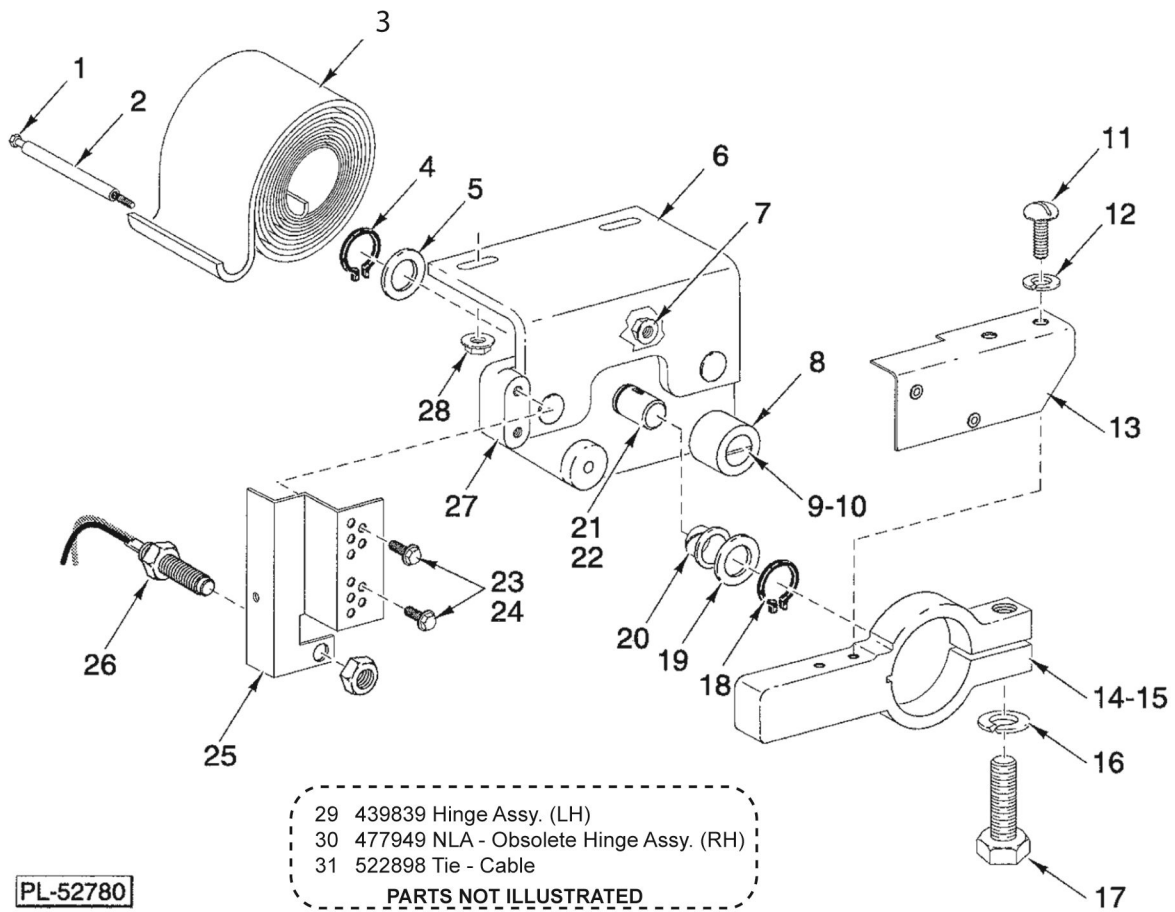


PL-52764

TOP COVER UNIT

TOP COVER UNIT

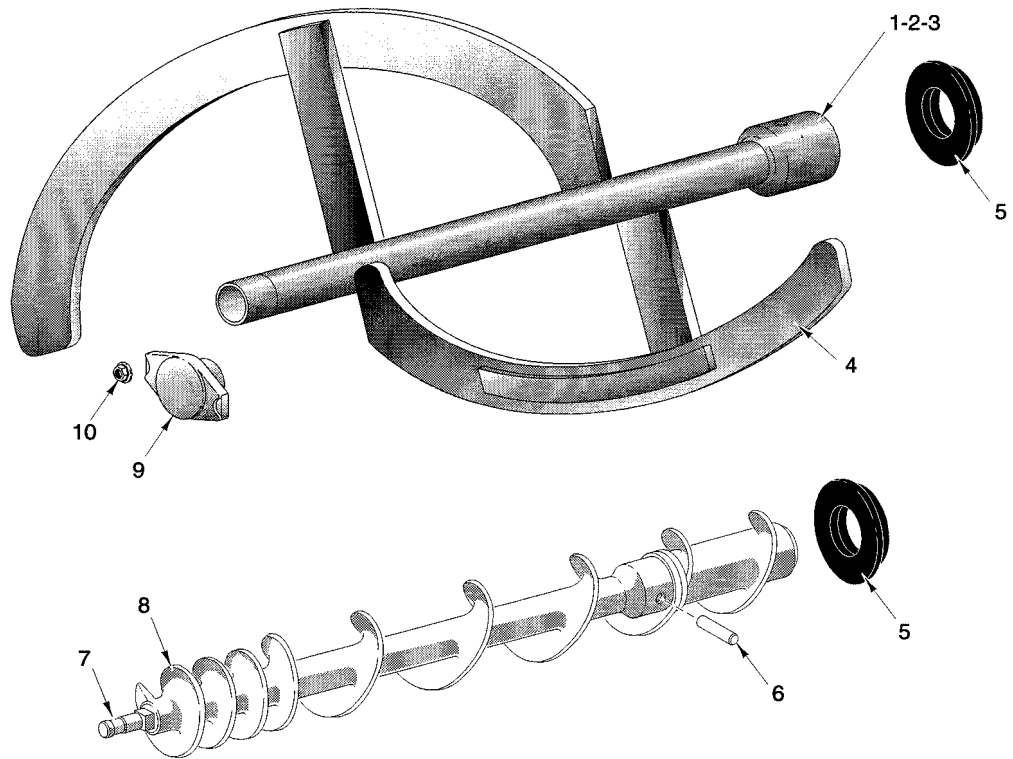
ILLUS.	PART NO.	NAME OF PART	AMT.
PL-52764			
1	477942	Cover.....	1
2	477956	Grommet.....	2
3	SC-41-50	Cap Screw 1/4-20 x 1/2 Hex Hd.....	4
4	439822	Plate - Hasp.....	1
5	WS-17-6	Washer.....	2
6	WL-6-17	Lockwasher 1/4 Medium.....	2
7	NS-25-4	Acorn Nut 1/4-20.....	2
8	RR-9-10	Retaining Ring.....	4
9	477928	Rod - Lid Latch.....	2
10	477927	Latch - Lid.....	1
11	477929	Handle - Lid Latch.....	1
12	102825-5	Gasket - Housing.....	2
13	SD-38-33	Self-Tapping Screw 10-24 x 1/2 Hex Washer Hd., Type TT.....	3
14	439816-2	Wireway - Weldment.....	1



HINGE UNIT

HINGE UNIT

ILLUS. PL-52780	PART NO.	NAME OF PART	AMT.
1	SC-41-36	Cap Screw 3/8 x 2 1/2 Hex Hd.....	2
2	439774	Spacer - Hinge Spring.....	2
3	439838	Spring - Spiral Torsion.....	2
4	RR-4-8	Retaining Ring.....	1
5	WS-30-80	Washer (SST).....	1
6	439830	Bracket - Hinge.....	1
7	NS-38-11	Nut -5/16 18 Hex Special (Use to fasten items 6 & 27 together).....	2
8	439836	Bumper.....	1
9	477935	Stud - Bumper.....	1
10	NS-38-11	Nut 5/16-18 Hex Special.....	1
11	SC-41-50	Cap Screw 1/4-20 x 1/2 Hex Hd.....	2
12	WL-6-17	Lockwasher 1/4 Medium.....	2
13	477977	Holder - Magnet.....	1
14	439834-2	Lever - Stop (Interlock Mtg.).....	1
15	439834	NLA - Obsolete--Lever - Stop (R.H.).....	1
16	WL-6-23	Lockwasher 5/16 Medium SST.....	1
17	SC-41-17	Cap Screw 5/16-18 x 1 1/2 Hex Hd. SST.....	1
18	RR-4-8	Retaining Ring.....	1
19	WS-30-80	Washer (SST).....	1
20	439845	Bearing - Sleeve.....	1
21	439833	Shaft.....	1
22	12430-42	Key 3/16 X 3/16 X 1/2 (Use with item 21).....	1
23	SC-113-96	Mach. Screw 8-32 x 1/2 Hex Washer Hd.....	2
24	WL-14-5	Lockwasher 8 External Shakeproof.....	2
25	477976	Bracket - Interlock Reed.....	1
26	87711-278-1	Switch - Reed.....	1
27	439837-2	Block - Bearing.....	1
28	NS-38-11	Nut 5/16-18 Hex Special (Use to mount item 6).....	2
29	439839	Hinge Assy. (LH)(Incls. items 6 thru 10 & 18 thru 21).....	1
30	477949	NLA - Obsolete--Hinge Assy. (RH)(Incls. items 6 thru 10 & 18 thru 21).....	1
31	522898	Tie - Cable.....	2

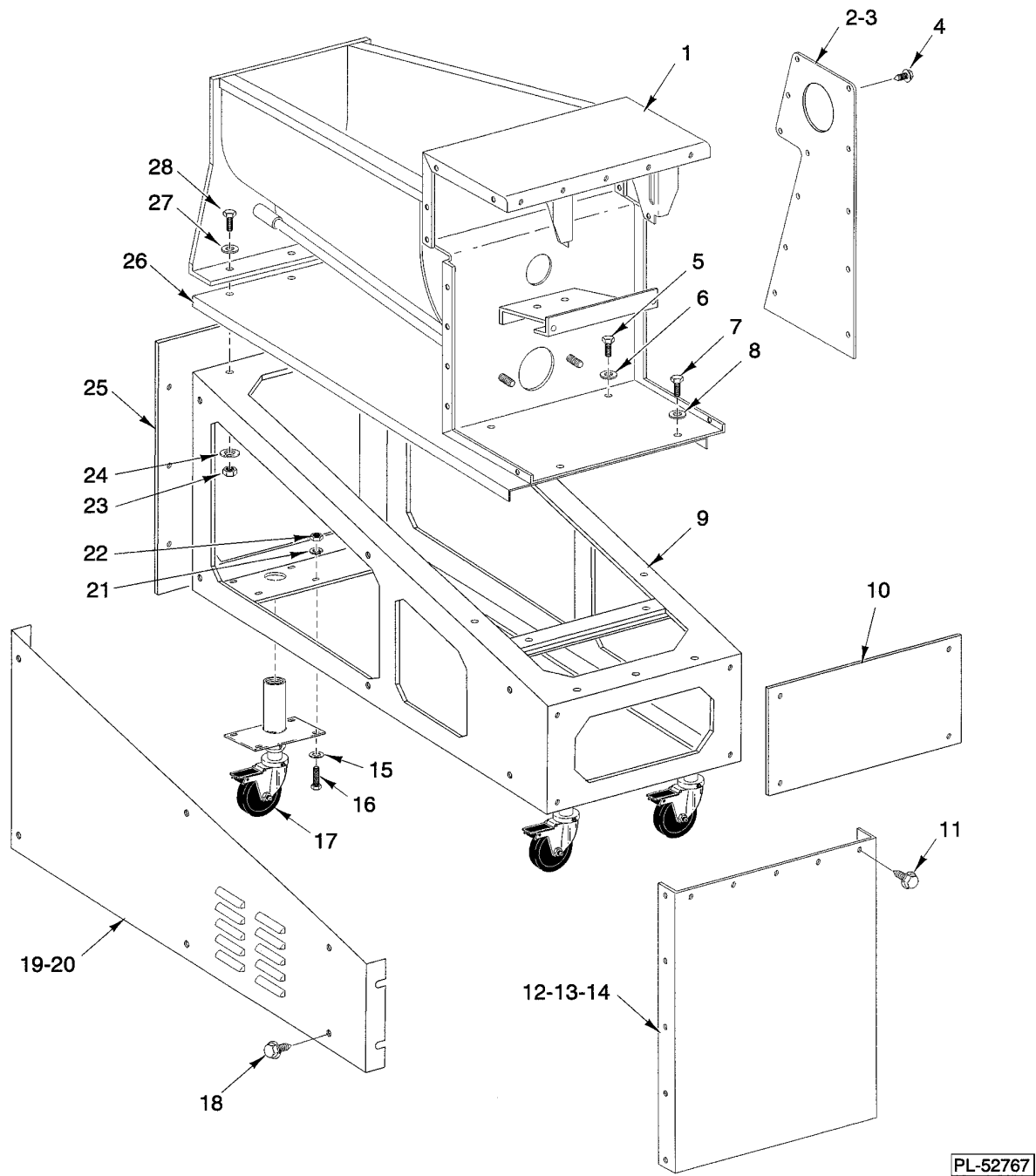


PL-52766

CONVEYOR & MIXING ARM UNIT

CONVEYOR & MIXING ARM UNIT

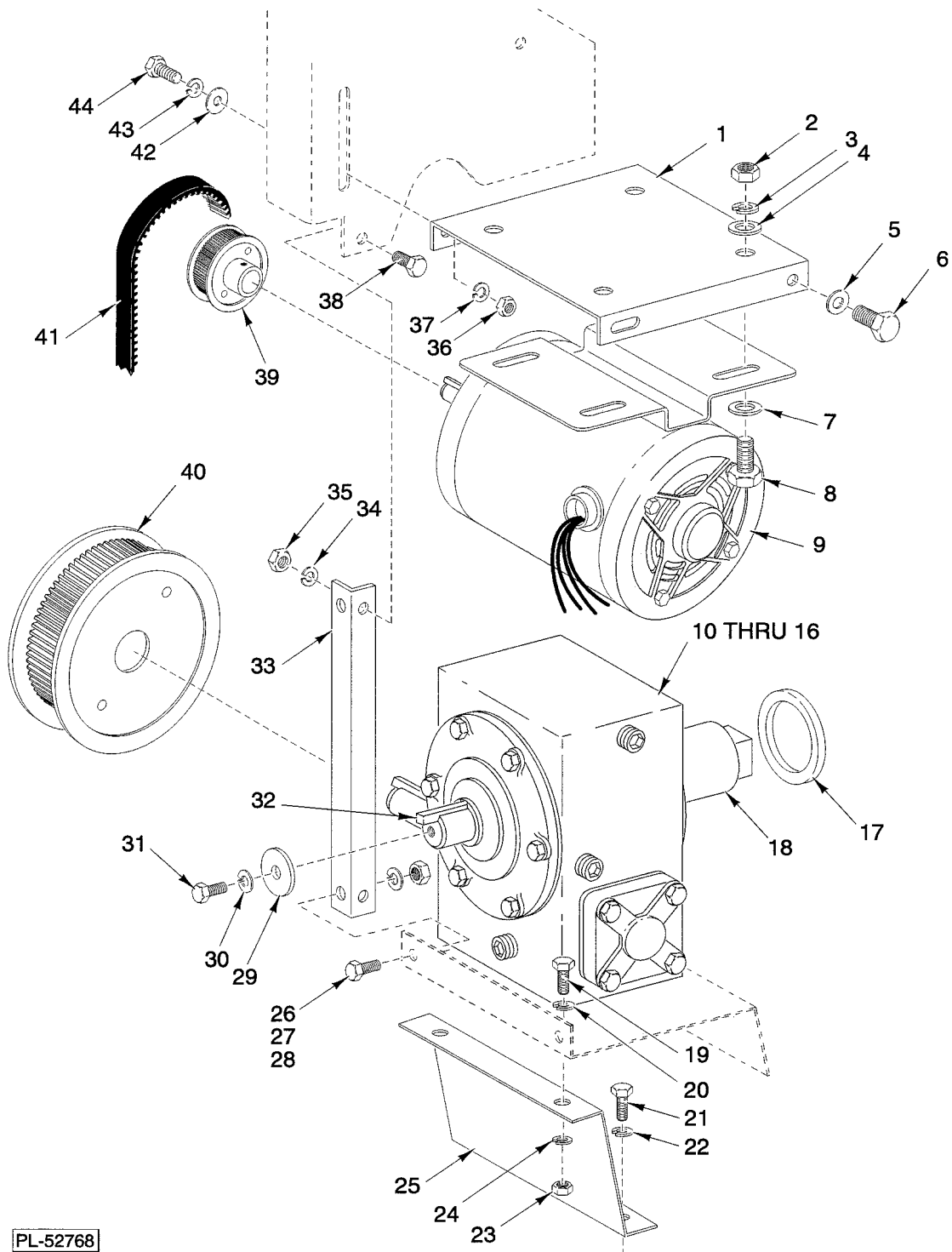
ILLUS.	PART NO.	NAME OF PART	AMT.
PL-52766			
1	477938	Mix Arm & Coupling Assy. (Incls. items 1,2,3,4 & 6).....	1
2	186706	Plug.....	1
3	477960	Pin - Shear.....	1
4	439814	Mix Arm Assy.....	1
5	439773	Seal - Mix Arm.....	2
6	477960	Pin - Shear.....	1
7	110576	Stud - Plate.....	1
8	439809	Conveyor Assy. (Incls. items 6 & 7).....	1
9	439763	Retainer - Assy.....	1
10	69862	Nut - Cylinder.....	2



FRAME & HOPPER UNIT

FRAME & HOPPER UNIT

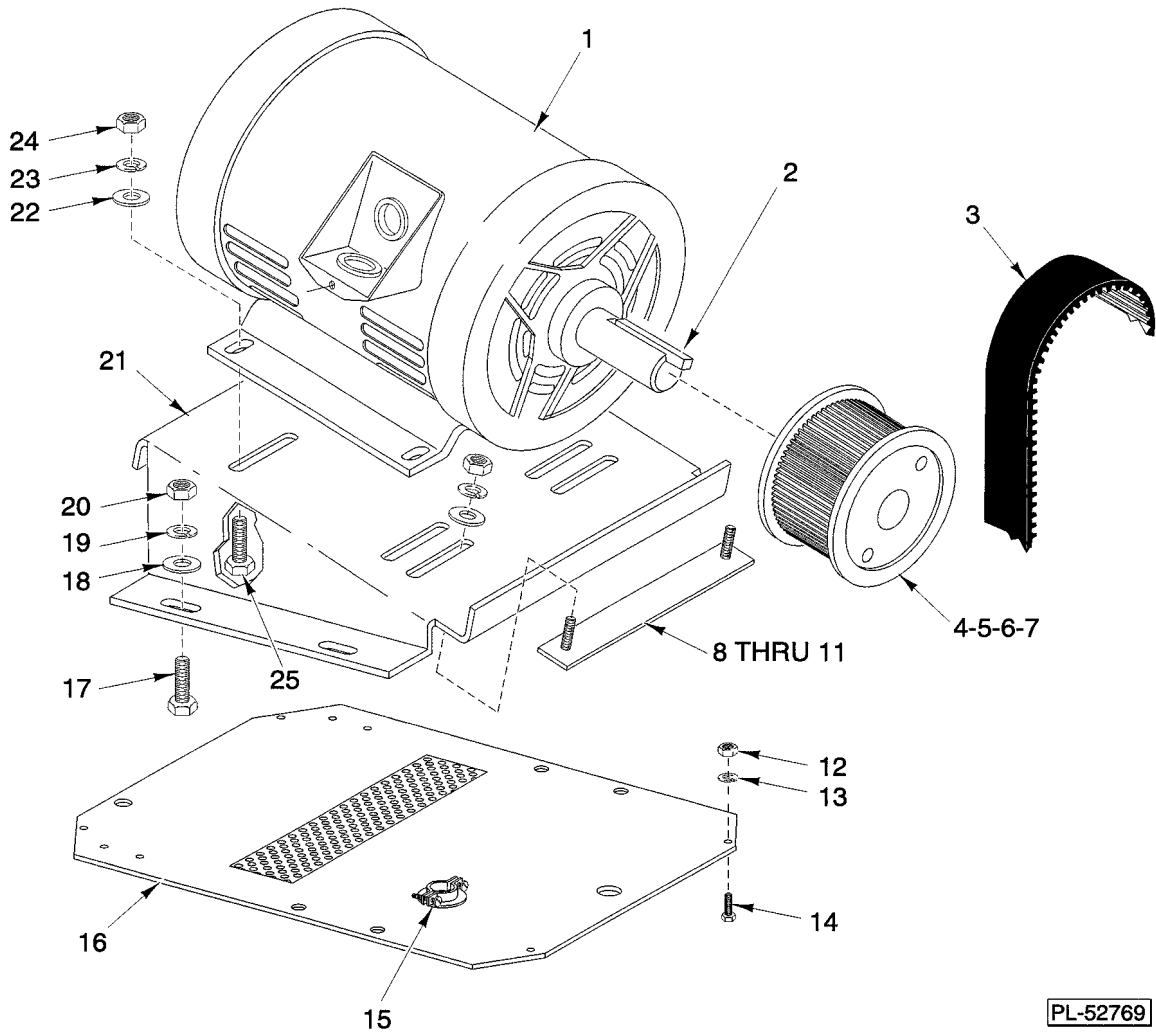
ILLUS. PL-52767	PART NO.	NAME OF PART	AMT.
1	439746-2	Hopper Assy.....	1
2	439826-1	Panel - Upper Side (LH)(Shown).....	1
3	439826-2	Panel - Upper Side (RH).....	1
4	SD-38-33	Self-Tapping Screw 10-24 x 1/2 Hex Washer Hd., Type TT.....	13
5	SC-41-31	Cap Screw 3/8-16 x 1 1/4 Hex Hd.....	2
6	WS-30-5	Washer.....	2
7	SC-41-31	Cap Screw 3/8 -16 x 1 1/4 Hex Hd.....	2
8	WS-30-5	Washer.....	2
9	439753	NLA - Obsolete--Frame Assy.....	1
10	439828-2	Panel - Back.....	1
11	SD-38-33	Self-Tapping Screw 10-24 x 1/2 Hex Washer Hd., Type TT.....	13
12	439824-2	Panel - Upper Back.....	1
13	527014	Gasket - Rear Panel.....	AR
14	SD-38-33	Self-Tapping Screw 10-24 x 1/2 Hex Washer Hd., Type TT.....	13
15	WS-5-42	Washer.....	4
16	SC-37-85	Cap Screw 5/16-18 x 1 Hex Hd.....	4
17	477924	Caster - 4" Wheel.....	4
18	SD-38-33	Self-Tapping Screw 10-24 x 1/2 Hex Washer Hd., Type TT.....	8
19	439829-1	Panel - Lower Side (LH).....	1
20	439829-2	Panel - Lower Side (RH)(Shown).....	1
21	WL-3-47	Lockwasher 5/16 Medium.....	4
22	NS-13-14	Full Nut 5/16-18 Hex.....	4
23	NS-15-13	Full Nut 3/8-16 Hex SST.....	3
24	WL-6-28	Lockwasher 3/8 Medium.....	3
25	439827	Panel - Front.....	1
26	439795-2	Tablecloth.....	1
27	WS-30-5	Washer.....	3
28	SC-41-31	Cap Screw 3/8 -16 x 1 1/4 Hex Hd.....	3



MIX MOTOR UNIT

MIX MOTOR UNIT

ILLUS.	PART NO.	NAME OF PART	AMT.
PL-52768			
1	439781	NLA - Obsolete--Bracket - Nut (Mix Motor).....	1
2	NS-13-14	Full Nut 5/16-18 Hex.....	4
3	WL-6-23	Lockwasher 5/16 Medium SST.....	4
4	WS-5-39	Washer.....	4
5	WL-6-28	Lockwasher 3/8 Medium.....	2
6	SC-62-43	Cap Screw 3/8-16 x 3/4 Hex Hd.....	2
7	WS-5-39	Washer.....	4
8	SC-41-10	Cap Screw 5/16-18 x 5/8 Hex Hd.....	4
9	435805-2	Motor Assy (208-240/480 V, 60 Hz, 3 Ph, 1 H.P.).....	1
10	186696	Gear Reducer.....	1
11	SC-62-43	Cap Screw 3/8-16 x 3/4 Hex Hd. (Used to mount item 10).....	4
12	WL-6-28	Lockwasher 5/16 Medium (Used to mount item 10).....	4
13	186646-1	Shim (.120 THK.).....	AR
14	186646-2	Shim (.060 THK.).....	AR
15	186646-3	Shim (.030 THK.).....	AR
16	186646-4	Shim (.018 THK.).....	AR
17	WS-14-37	Washer.....	AR
18	439743	Shaft - Mix Arm (Square Drive).....	1
19	SC-41-10	Cap Screw 5/16 -18 x 5/8 Hex Hd.....	4
20	WL-6-23	Lockwasher 5/16 Medium SST.....	2
21	SC-62-43	Cap Screw 3/8-16 x 3/4 Hex Hd.....	2
22	WL-6-28	Lockwasher 3/8 Medium.....	2
23	NS-13-14	Full Nut 5/16-18 Hex.....	4
24	WL-6-23	Lockwasher 5/16 Medium SST.....	2
25	439749	Brace - Mix Drive Grind.....	1
26	SC-41-10	Cap Screw 5/16-18 x 5/8 Hex Hd.....	4
27	WL-6-23	Lockwasher 5/16 Medium SST.....	4
28	NS-13-14	Full Nut 5/16-18 Hex.....	4
29	186703	Washer.....	1
30	WL-6-28	Lockwasher 3/8 Medium.....	1
31	SC-62-22	Cap Screw 3/8-16 x 1 1/4 Hex Hd.....	1
32	12430-196	Key 1/4 x 1/4 x 4 3/4.....	2
33	439757-2	Brace - Mix Drive.....	2
34	WL-6-23	Lockwasher 5/16 Medium SST.....	4
35	NS-13-14	Full Nut 5/16-18 Hex.....	2
36	NS-13-14	Full Nut 5/16-18 Hex.....	2
37	WL-6-23	Lockwasher 5/16 Medium SST.....	2
38	SC-41-10	Cap Screw 5/16-18 x 5/8 Hex Hd.....	4
39	186622	Pulley - Driver (16T).....	1
40	186723	Pulley - Driven (102T).....	1
41	186714	Belt - Flexa-Gear.....	1
42	WS-5-39	Washer.....	2
43	WL-6-23	Lockwasher 5/16 Medium SST.....	2
44	SC-37-85	Cap Screw 5/16-18 x 1 Hex Hd.....	2



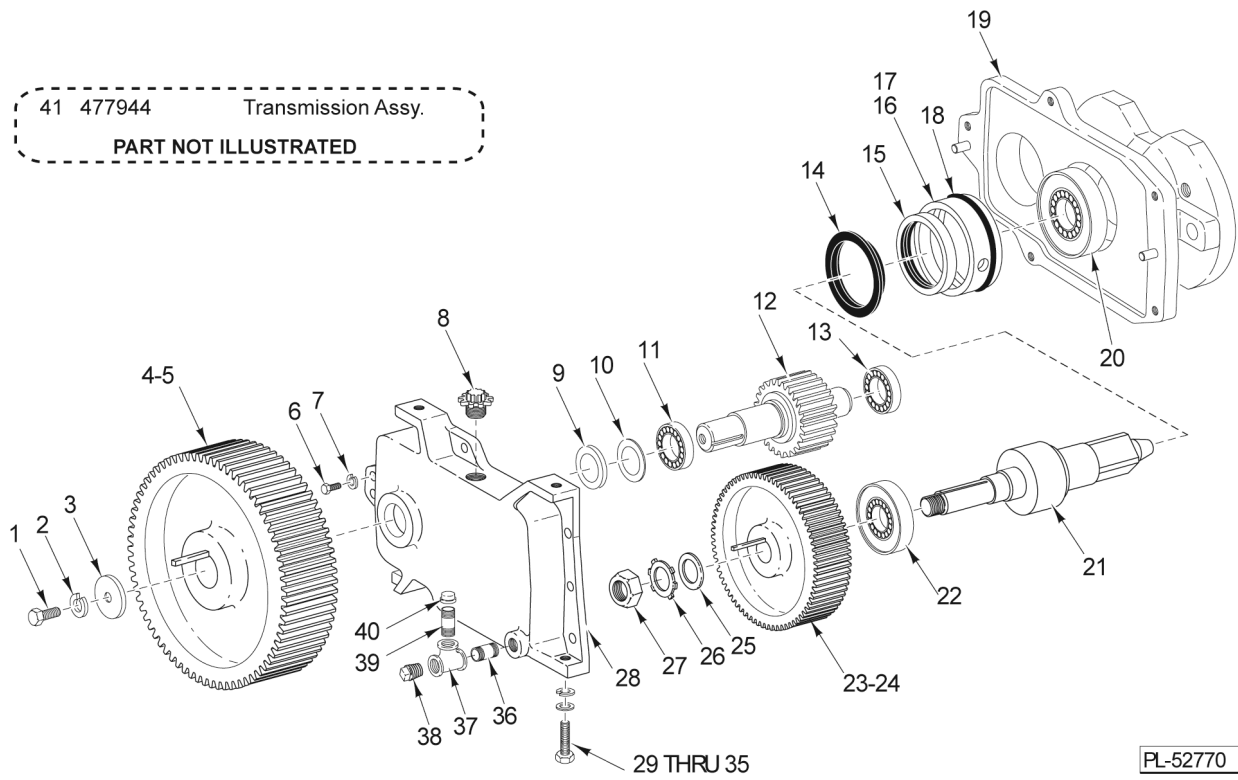
PL-52769

GRIND MOTOR UNIT

GRIND MOTOR UNIT

ILLUS. PL-52769	PART NO.	NAME OF PART	AMT.
1	435697-3	Motor - Drive (208 V, 60 Hz, 3 Ph, 7.5 H.P.).....	1
2	12430-178	Key - 1/4 x 1/4 x 1 1/2.....	1
3	186713	Belt - Flexa-Gear.....	1
4	477947-1	Pulley - Timing (40T).....	1
5	477947-2	Pulley - Hub (Screws supplied).....	1
6	477948-1	Pulley - Timing (40T).....	1
7	477948-2	Pulley - Hub.....	1
8	439782	Stud & Plate.....	1
9	NS-15-13	Full Nut 3/8-16 Hex SST.....	2
10	WL-6-28	Lockwasher 3/8 Medium.....	2
11	WS-30-5	Washer.....	2
12	NS-10-16	Mach. Nut 10-24 Hex.....	4
13	WL-10-6	Lockwasher 10 Ext. Shakeproof.....	4
14	SC-27-41	Mach. Screw 10-24 x 3/8 Rd. Hd.....	4
15	FE-23-47	Connector - Cable.....	1
16	477941	NLA - Obsolete--Panel - Bottom.....	1
17	SC-41-31	Cap Screw 3/8 -16 x 1 1/4 Hex Hd.....	6
18	WS-18-4	Washer.....	4
19	WL-6-28	Lockwasher 3/8 Medium.....	4
20	NS-15-13	Full Nut 3/8-16 Hex SST.....	4
21	439744	NLA - Obsolete--Bracket - Motor Mounting.....	1
22	WS-30-5	Washer.....	4
23	WL-6-28	Lockwasher 3/8 Medium.....	4
24	NS-15-13	Full Nut 3/8-16 Hex SST.....	4
25	SC-41-31	Cap Screw 3/8-16 x 1 1/4 Hex Hd.....	4

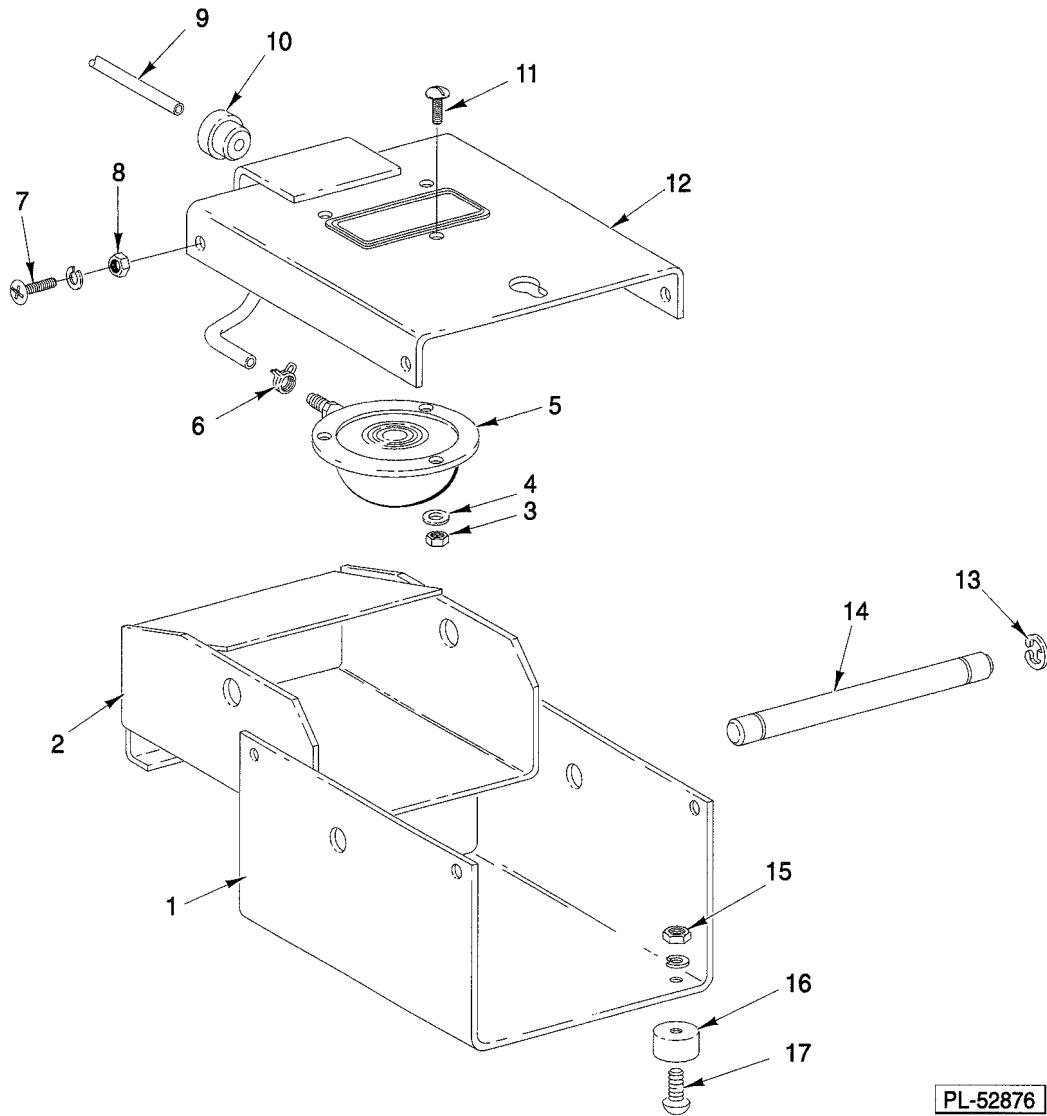
41 477944 Transmission Assy.
PART NOT ILLUSTRATED



TRANSMISSION UNIT

TRANSMISSION UNIT

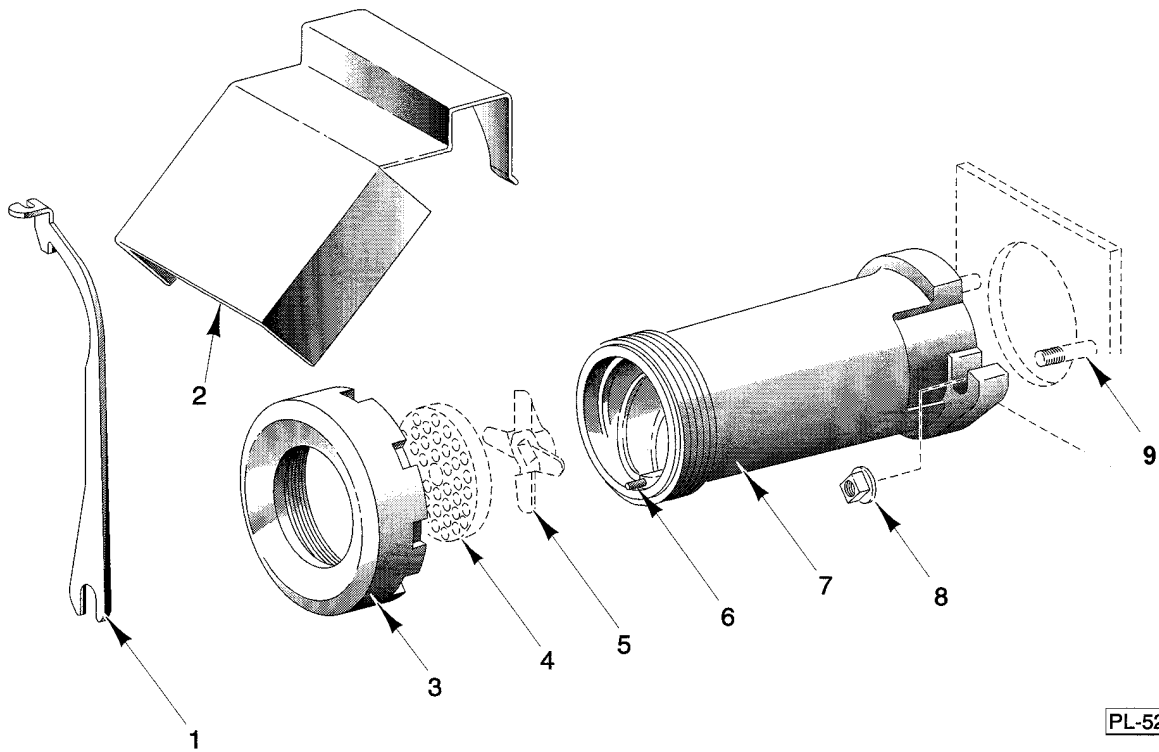
ILLUS.	PART NO.	NAME OF PART	AMT.
PL-52770			
1	SC-062-22	Cap Screw 3/8-16 x 1-1/4 Hex Hd.....	1
2	WL-6-28	Lockwasher 3/8 Medium.....	1
3	186703	Washer.....	1
4	12430-178	Key - 1/4 x 1/4 x 1 1/2.....	1
5	186723	Pulley - Driven (102T).....	1
6	SC-36-71	Cap Screw 3/8-16 x 1 1/4 Hex Hd.....	5
7	WL-6-28	Lockwasher 3/8 Medium.....	5
8	108963-2	Plug - Oil Fill.....	1
9	186657	Seal - Oil.....	1
10	SL-3-11	Spring - Loading ND 72.....	1
11	BB-7-21	Ball Bearing - N.D. 3207.....	1
12	477940	Shaft - Pinion (18T).....	1
13	BB-18-33	Ball Bearing - Fafnir #205KF.....	1
14	105196	Seal - Outer.....	1
15	108591	Seal - Square Drive Shaft.....	1
16	186655	Retainer - Seal.....	1
17	SC-47-35	Set Screw 5/16 -18 x 1/2 Hdls, Cup Pt.....	1
18	67500-52	"O" Ring.....	1
19	477946-2	Hub - Attachment.....	1
20	BR-2-28	Roller Bearing - Cone & Cup Assy.....	1
21	439742	Shaft - Grind Worm Drive.....	1
22	BR-2-20	Roller Bearing - Cone & Cup Assy.....	1
23	477939	Gear (57T).....	1
24	12430-215	Key.....	1
25	186658	Washer - Keyed.....	1
26	WL-17-7	Lockwasher - Bearing Lock Nut.....	1
27	NS-34-7	Nut - N-06.....	1
28	477945-2	Case - Gear.....	1
29	SC-62-22	Cap Screw 3/8-16 x 1 1/4 Hex Hd.....	2
30	WL-6-28	Lockwasher 3/8 Medium.....	2
31	WS-18-4	Washer.....	2
32	186646-1	Shim (.120 THK.).....	AR
33	186646-2	Shim (.060 THK.).....	AR
34	186646-3	Shim (.030 THK.).....	AR
35	186646-4	Shim (.018 THK.).....	AR
36	FP-35-46	Pipe 3/8 x 1 Lg. (T.B.E).....	1
37	FP-19-10	Tee 3/8 x 3/8 x 3/8.....	1
38	FP-28-9	Plug - Pipe 3/8 Square Hd.....	1
39	FP-35-52	Nipple 3/8 x 2 TBE.....	1
40	FP-77-75	NLA - Obsolete--Cap - Pipe 3/8.....	1
41	477944	Transmission Assy. (Incls. items 6 thru 28 & 36 thru 40).....	1



FOOT SWITCH UNIT

FOOT SWITCH UNIT

ILLUS.	PART NO.	NAME OF PART	AMT.
PL-52876			
1	292632	Base - Foot Switch.....	1
2	292635	Switch - Rocker Assy.....	1
3	NS-31-8	Stop Nut 8-32 Special.....	3
4	WS-19-10	Washer.....	3
5	87711-214-1	Actuator - Air Switch.....	1
6	115747-8	Clamp - Hose.....	2
7	SC-21-23	Mach. Screw 10-24 x 1/2 Rd. Hd.....	4
8	NS-31-15	Stop Nut - Special 10-24 Hex (SST).....	4
9	292629	Tubing - Air (72").....	1
10	FE-25-16	Strain Relief.....	1
11	SC-21-15	Mach. Screw 8-32 x 1/2 Rd Hd, Slotted.....	3
12	439861-2	Cover-Foot Switch.....	1
13	RR-10-12	Retaining Ring.....	2
14	292638	Shaft - Pivot.....	1
15	NS-31-15	Stop Nut - Special 10-24 Hex (SST).....	4
16	19105-2	Bumper.....	4
17	SC-21-24	Mach. Screw 10-24 x 5/8 Rd Hd.....	4
	295284	Foot Switch Assy. (Incls. items 1 thru 17).....	1



PL-52771

#32 GRINDER UNIT

#32 GRINDER UNIT

ILLUS.	PART NO.	NAME OF PART	AMT.
PL-52771			
1	439242	Wrench - Cylinder.....	1
2	292953	Deflector - Meat.....	1
3	00-873697	Ring - Adjusting.....	1
6	105806	Pin - Plate.....	1
7	00-873720-00002	Cylinder #32 (Mach. SST).....	1
8	69862	Nut - Cylinder.....	2
9	00-118266	Stud.....	2

