



CATALOG OF REPLACEMENT PARTS

HTi SERIES SCALES



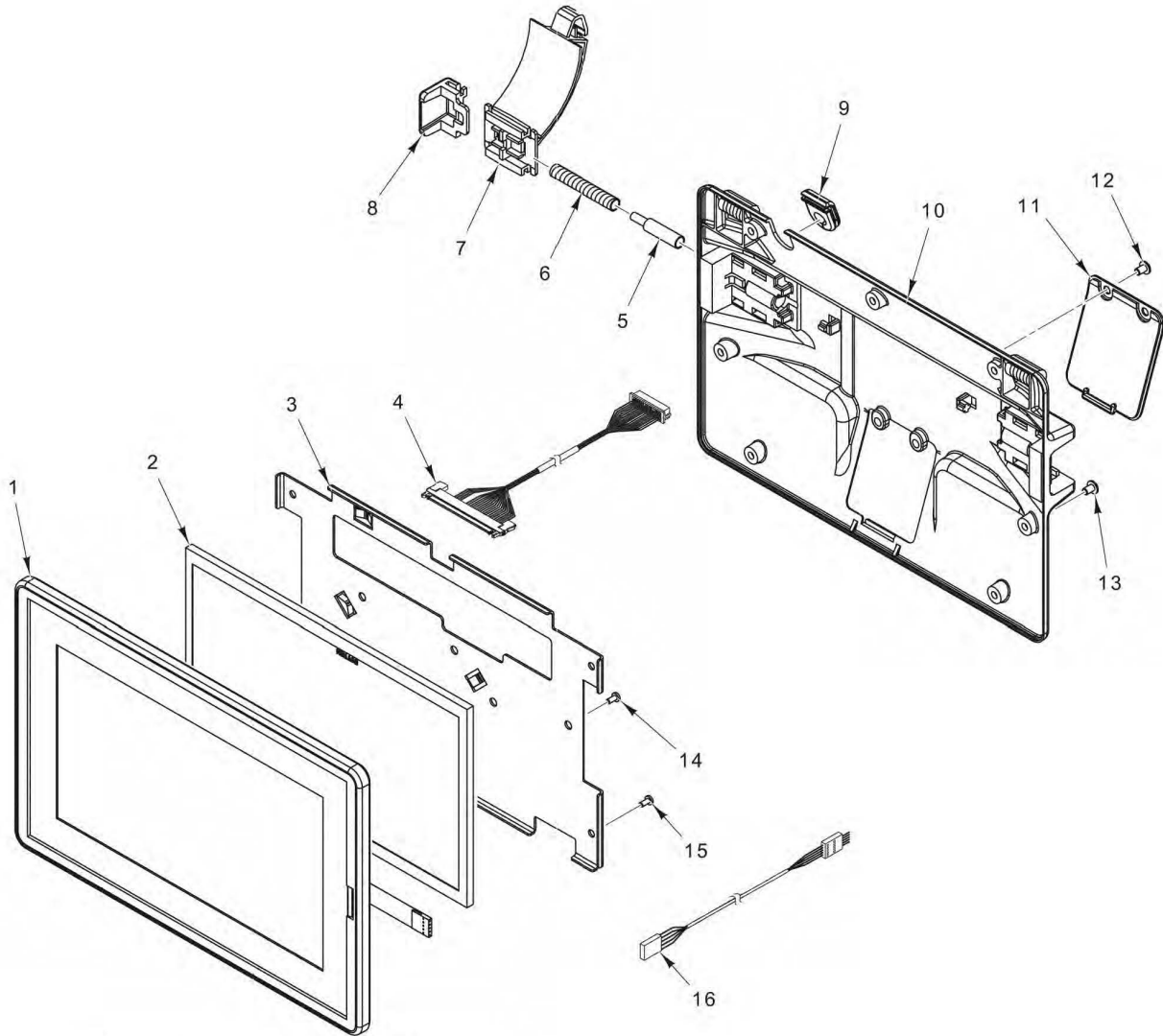
ML-29350	HTi-7LS
ML-29351	HTi-LS
ML-29352	HTiP-LS
ML-29354	HTi-7ELS
ML-29380	HTi-7LS2
ML-29381	HTi-LS2
ML-29382	HTiP-LS2
ML-29384	HTi-7ELS2
ML-29377	HTi-10ELS2
ML-29369	HTi-7LH
ML-29370	HTi-LH
ML-29371	HTiP-LH
ML-29372	HTi-7ELH
ML-29368	HTi-10ELH

PREVIOUS MLS COVERED IN THIS CATALOG

ML-29367	HTi-10ELS
----------	-----------

Table of Contents

5	OPERATOR CONSOLE
7	CUSTOMER DISPLAY (ML-29350, ML-29369, & ML-29380)
9	WITHOUT CUSTOMER DISPLAY (ML-29351, ML-29354, ML-29367, ML-29368, ML-29370, ML-29372, ML-29377, ML-29381 & ML-29354)
11	WEIGHER COMPONENTS
13	MAIN CIRCUIT COMPONENTS (SYSTEM CONTROL / PERIPHERAL PCB)
15	MAIN CIRCUIT COMPONENTS (ARA PCB)
17	ELEVATED DISPLAY (10 IN.)
19	POWER SUPPLY
21	PRINTER
23	CASSETTE (WIDE LABEL)
25	CASSETTE (NARROW LABEL)
27	PRINTER ONLY (ML-29352, ML-29371, & ML-29382)
29	ELEVATED DISPLAY (7 IN.)
31	SCALE UNIT (USED WITH TWO-PIECE SCALE/PRINTER)
33	CABLES - CONNECTOR BOARD (SYSTEM CONTROL / PERIPHERAL BOARD) (GREEN PCB)
35	CABLES - CONNECTOR BOARD (SYSTEM CONTROL / PERIPHERAL BOARD) (BLUE / BLACK PCB)
37	CABLES - CONNECTOR BOARD (ARA SYSTEM CONTROL BOARD) (GREEN PCB)
39	CABLES - CONNECTOR BOARD (ARA SYSTEM CONTROL BOARD) (BLUE / BLACK PCB)
41	CABLES - PANEL MOUNT (SYSTEM CONTROL / PERIPHERAL BOARD) (BLUE / BLACK PCB)
43	CABLES - PANEL MOUNT (ARA SYSTEM CONTROL BOARD)



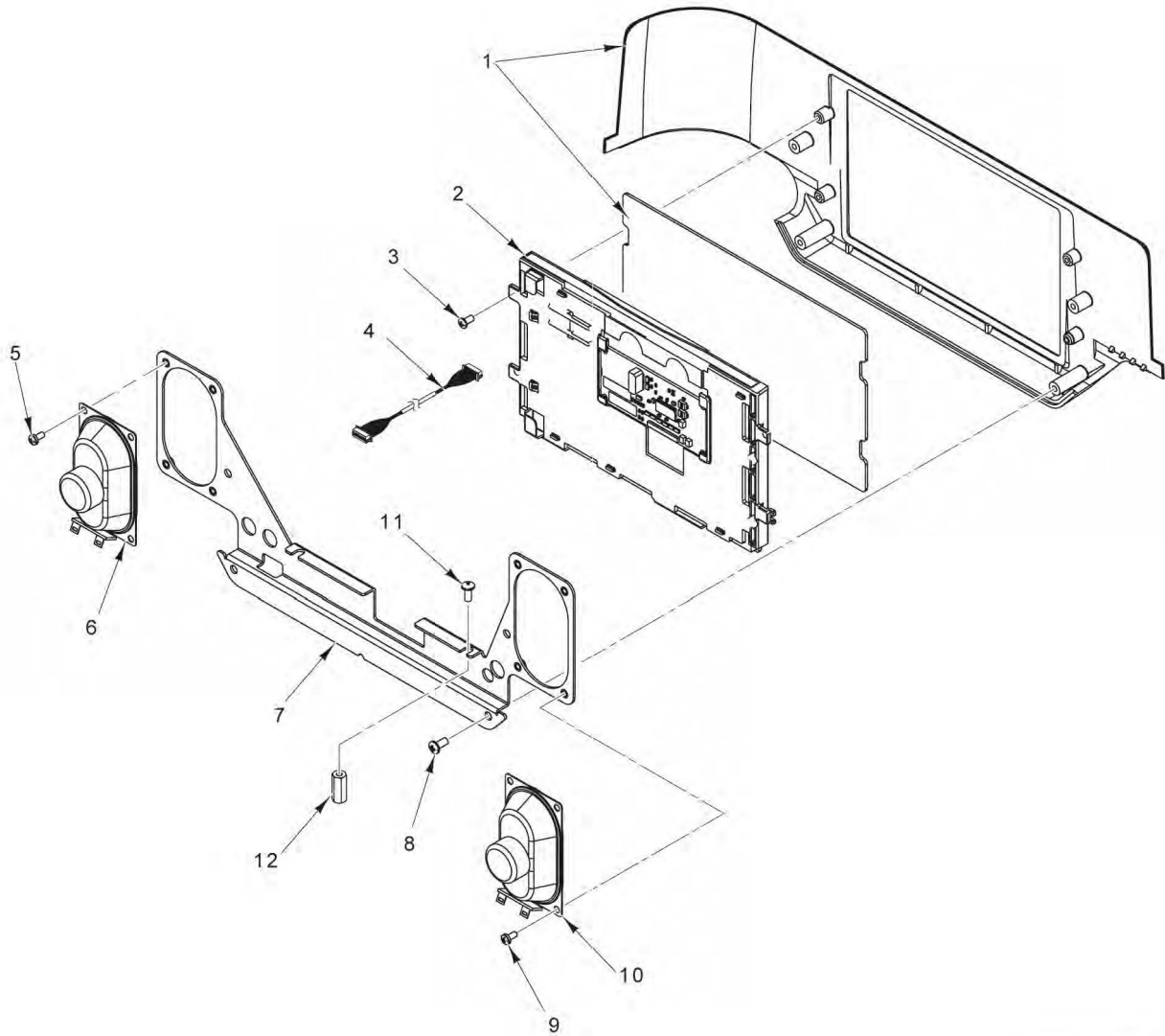
- | | | |
|----|-----------|-------------|
| 17 | 00-255502 | Tie - Cable |
| 18 | 00-913108 | Stylus |
- PARTS NOT ILLUSTRATED**

PL-60270

OPERATOR CONSOLE

OPERATOR CONSOLE

ILLUS.	PART NO.	NAME OF PART	AMT.
PL-60270			
1	00-447080	Touchscreen Housing Assembly.....	1
2	00-447157	Display (10.1 In.) (TFT) (WVGA LED).....	1
3	00-447813	Bracket Assy. - Display Mounting.....	1
4	00-447095	Cable Assy. (Operator Display LVDS).....	1
5	00-447084	Guide - Spring.....	1
6	00-043316	Spring - Latch Return.....	2
7	00-447039	Arm - Console Latch.....	2
8	00-447040	Button - Console Latch.....	2
9	00-447038	Grommet.....	1
10	00-447018	Housing - Console Rear (Black).....	1
11	00-447076	Plate - Scanner Cover (Black).....	1
12	SC-018-30	Mach. Screw 8-32 x 1/4 Phil. Pan Hd.....	2
13	SC-018-30	Mach. Screw 8-32 x 1/4 Phil. Pan Hd.....	7
14	SC-018-28	Mach. Screw 6-32 x 1/4 Phil. Pan Hd.....	2
15	SC-018-28	Mach. Screw 6-32 x 1/4 Phil. Pan Hd.....	4
16	00-447167	Cable Assy. (Touchscreen).....	1
17	00-255502	Tie - Cable Locking.....	AR
18	00-913108	Stylus (With Hobart Service Logo).....	1

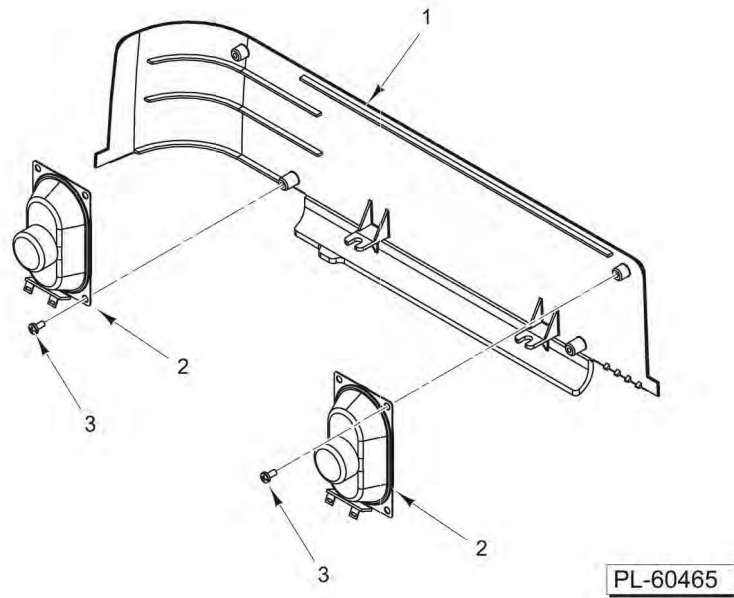


PL-60271

**CUSTOMER DISPLAY
(ML-29350, ML-29369, & ML-29380)**

**CUSTOMER DISPLAY
(ML-29350, ML-29369, & ML-29380)**

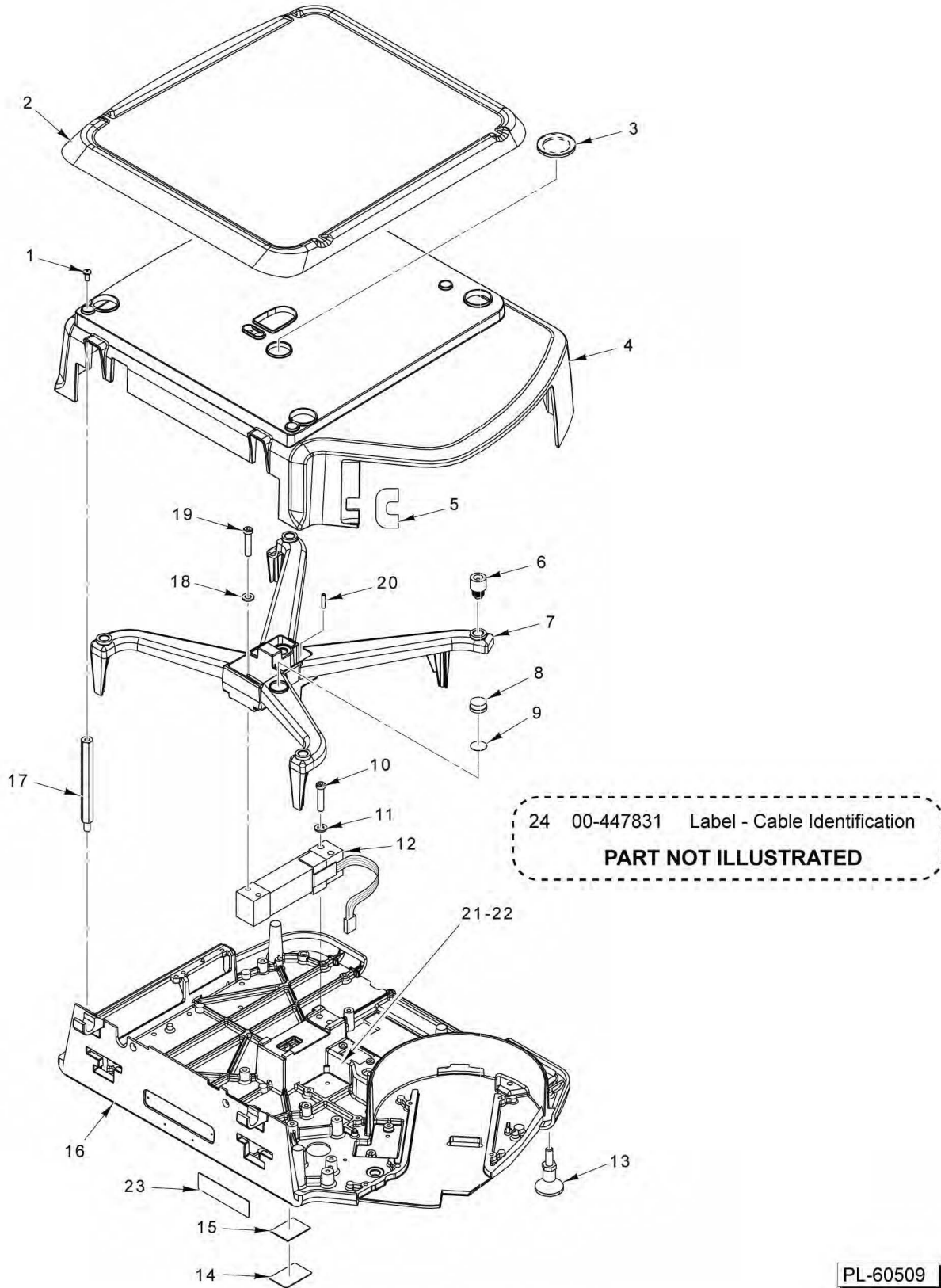
ILLUS. PL-60271	PART NO.	NAME OF PART	AMT.
1	00-449178	Housing Assy, Customer Display.....	1
2	00-447081	Display Assy. (7 In.).....	1
3	SD-033-14	Self-Tapping Screw 4-40 x 1/4 Phil. Pan Hd.....	4
4	00-447032	Cable Assy. (Customer Display) (LVDS).....	1
5	SC-018-28	Mach. Screw 6-32 x 1/4 Phil. Pan Hd.....	4
6	00-447030	Speaker Assy.....	1
7	00-447063	Bracket - Speaker Mounting.....	1
8	SD-037-71	Self-Tapping Screw 6-19 x 5/16 Phil. Pan Hd.....	4
9	SC-018-28	Mach. Screw 6-32 x 1/4 Phil. Pan Hd.....	4
10	00-447030	Speaker Assy.....	1
11	SA-021-52	Mach. Screw Assy. 8-32 x 7/8 Phil. Pan Hd.....	2
12	00-446929	Spacer - Mounting (GCD).....	2



WITHOUT CUSTOMER DISPLAY
(ML-29351, ML-29354, ML-29367, ML-29368, ML-29370, ML-29372, ML-29377, ML-29381 & ML-29354)

WITHOUT CUSTOMER DISPLAY
(ML-29351, ML-29354, ML-29367, ML-29368, ML-29370, ML-29372, ML-29377,
ML-29381 & ML-29354)

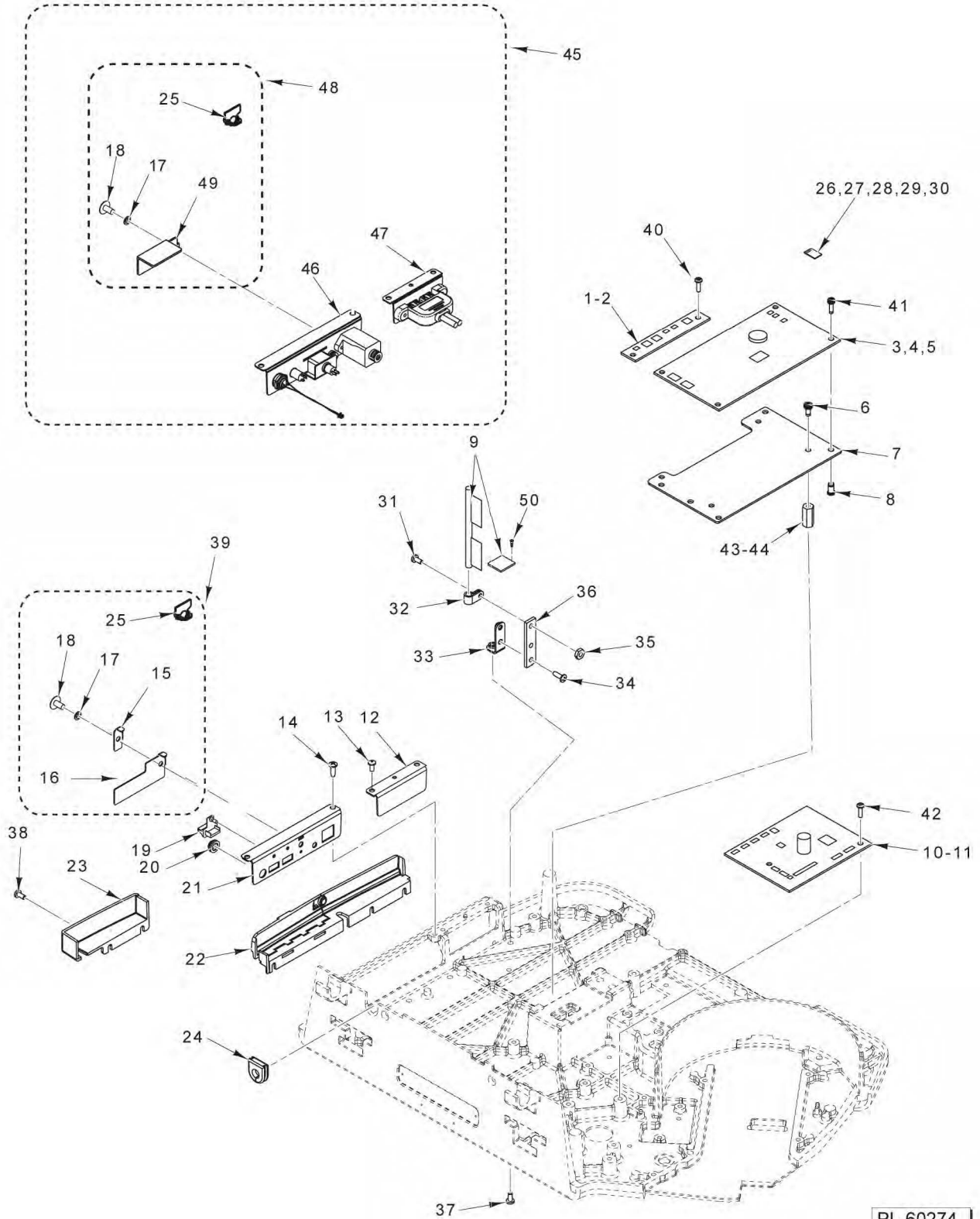
ILLUS.	PART NO.	NAME OF PART	AMT.
PL-60465			
1	00-447052	Panel - Housing Filler.....	1
2	00-447030	Speaker Assy.....	2
3	SD-015-41	Self-Tapping Screw 8-32 x 1/2 Phil. Pan Hd., Type TT.....	4



WEIGHER COMPONENTS

WEIGHER COMPONENTS

ILLUS. PL-60509	PART NO.	NAME OF PART	AMT.
1	SC-129-33	Mach. Screw 8-32 x 3/8 Phil. Pan Hd.....	4
2	00-447083	Platter Assy.....	1
3	00-441243	Cover - Level Bubble (Incls. Foam Gasket).....	1
4	00-447050	Housing - Main (Black).....	1
5	00-447058	Shield - Infrared.....	1
6	00-043319	Mount - Platter.....	5
7	00-043302	Platter - Sub.....	1
8	00-043112	Level - Spirit.....	1
9	00-043257	Tape - Level.....	1
10	SC-120-70	Cap Screw 1/4-20 x 1-5/8 Hex Socket Hd.....	2
11	WL-008-17	Lockwasher 1/4 Internal.....	2
12	00-443075	Load Cell - Multiple Range (15 kg).....	1
13	00-447055	Foot Assy.....	4
14	00-043389	Plate - Remote Weigher.....	1
15	00-043256	Tape.....	1
16	00-444750-00005	Base - Main.....	1
17	00-043318	Standoff (Housing Mount).....	4
18	WL-008-17	Lockwasher 1/4 Internal.....	2
19	SC-120-70	Cap Screw 1/4-20 x 1-5/8 Hex Socket Hd.....	2
20	00-043286	Screw - Overload (Stop).....	2
21	00-043256	Tape.....	1
22	00-043390	Plate - SM Port.....	1
23	00-184336	Label - Interference Warning.....	1
24	00-447831	Label - Cable Identification.....	1



PL-60274

**MAIN CIRCUIT COMPONENTS
(SYSTEM CONTROL / PERIPHERAL PCB)**

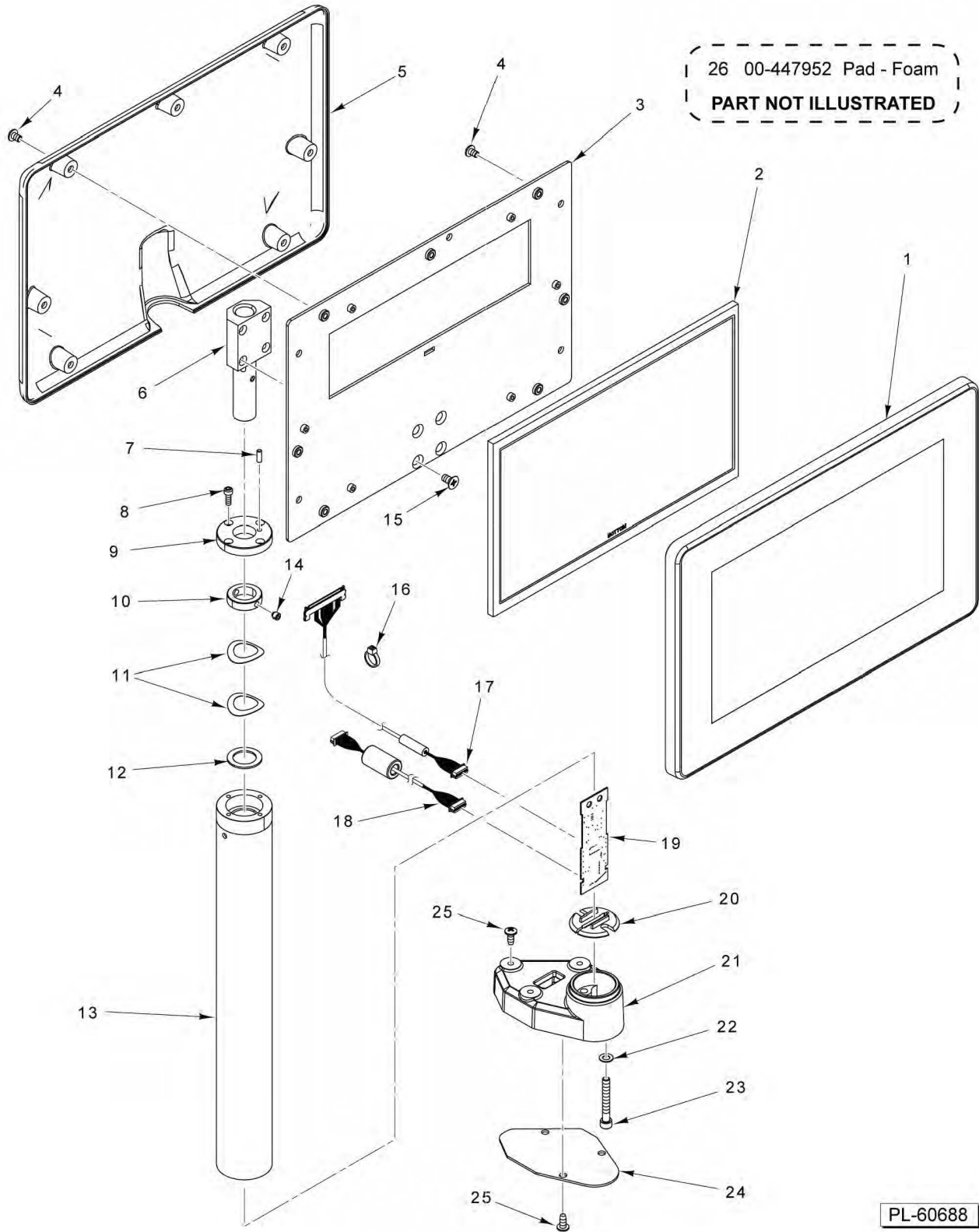
**MAIN CIRCUIT COMPONENTS
(SYSTEM CONTROL / PERIPHERAL PCB)**

ILLUS. PL-60274	PART NO.	NAME OF PART	AMT.
1	00-447155	Board - Connector (Green) (Before Serial No. 451108134).....	1
2	00-447720	Board - Connector (Black) (Starting Serial No. 451108134).....	1
3	00-447158	Board - System Control (Green) (Before Serial No. 451113631).....	1
4	00-448248	Board - System Control (Blue) (Starting Serial No. 451113631).....	1
5	00-449460	Board - System Control (Blue) (Use only in scales where application V3.0 or higher is currently installed).....	1
6	SC-129-33	Mach. Screw 8-32 x 3/8 Phil. Pan Hd.....	4
7	00-447012	Bracket Assy. - Main Board.....	1
8	00-047080-00019	Insert.....	5
9	00-449162	Kit - WiFi Module and Antenna (Must replace as set).....	1
10	00-447152	Board - Peripheral Control (Green) (Before Serial No. 451108110).....	1
11	00-447780	Board - Peripheral Control (Black) (Starting Serial No. 451108110).....	1
12	00-447069	Bracket - GCB Blank.....	1
13	SD-015-40	Self-Tapping Screw 8-32 x 3/8 Phil. Pan Hd., Type TT.....	2
14	SD-015-40	Self-Tapping Screw 8-32 x 3/8 Phil. Pan Hd., Type TT.....	2
15	00-447088	Plate - Security.....	1
16	00-447067	Plate - USB Cover.....	1
17	WL-003-12	Lockwasher #8 Helical.....	1
18	00-183906	Screw (Special Fil. Hd.).....	1
19	00-443581	Plug - USB Type A.....	2
20	00-443606	Seal - Power / Reset Button.....	1
21	00-447068	Cover - Connector.....	1
22	00-447070	Cover - Connector Assy. (Optional).....	1
23	00-447059	Cover - Network.....	1
24	00-447046	Grommet.....	1
25	00-444424	Seal - Wire Roto (8 In.).....	1
26	00-447164-00014	Micro SD (Programmed) (8GB) (Version 1.12.0) (Programmed, HTi) (8GB) (Version 1.12.0).....	1
27	00-447907-00008	Micro SD (Programmed) (16GB) (Version 2.3.0).....	1
28	00-448959-00002	Micro SD (Programmed) (16GB) (Version 2.5.0).....	1
29	00-448959-00004	Micro SD (Programmed) (16GB) (Version 2.6.0) (Only use where 2.6 is currently installed).....	1
30	00-449454-00008	Micro SD (Programmed) (16GB) (Version 3.2.100) (Use only in scales where application V3.0 or higher is currently installed).....	1
31	SD-015-40	Self-Tapping Screw 8-32 x 3/8 Phil. Pan Hd., Type TT.....	1
32	00-447108	Clamp P.....	1
33	00-447087	Bracket - Antenna.....	1
34	SC-129-33	Mach. Screw 8-32 x 3/8 Phil. Pan Hd.....	2
35	NS-031-07	Stop Nut 8-32 Hex.....	1
36	00-447086	Isolator - Antenna.....	1
37	SD-015-40	Self-Tapping Screw 8-32 x 3/8 Phil. Pan Hd., Type TT.....	1
38	SD-039-75	Self-Tapping Screw 8-32 x 3/8, Type TT (Black).....	3
39	00-448181	Kit - Security (Incls. Items 15, 16, 17, 18 & 25).....	1
40	SC-129-33	Mach. Screw 8-32 x 3/8 Phil. Pan Hd.....	2
41	SC-112-42	Mach. Screw 6-32 x 1/2 Phil. Pan Hd.....	5
42	SC-129-33	Mach. Screw 8-32 x 3/8 Phil. Pan Hd.....	2
43	00-442649	Standoff (3/8 x 7/8).....	4
44	00-448189	Standoff (3/8 x 1-1/2) (Used in Panel Mount Bracket Applications).....	4
45	00-448274	Kit - Service (Panel Mount) (Incls. Items 46, 47, & 48).....	1
46	00-448030	Bracket Assy. (Panel Mount).....	1
47	00-448056	Bracket Assy. (USB Panel Mount).....	1
48	00-448245	Kit - Security Seal (With Security Plate) (Incls. Items 17, 18, 24, & 49).....	1
49		Plate - Security (Part Of Item 48).....	1
50	SC-132-06	Screw - Mach M2 X 0.4 X 4MM.....	2
51	00-447803	Bracket - Connector Board (Single USB).....	1
52	00-448039	Bracket, Panel Mount (Single USB).....	1

MAIN CIRCUIT COMPONENTS (ARA PCB)

ILLUS. PL-65162	PART NO.	NAME OF PART	AMT.
1	00-449711	Kit - Wifi Module & Antenna (Must be replaced as set) (Use with ARA board only)	1
2	00-447086	Isolator - Antenna.....	1
3	NS-031-07	Stop Nut 8-32 Hex.....	1
4	SC-129-33	Mach. Screw 8-32 x 3/8 Phil. Pan Hd.....	2
5	00-447087	Bracket - Antenna.....	1
6	00-447108	Clamp P.....	1
7	SD-015-40	Self-Tapping Screw 8-32 x 3/8 Phil. Pan Hd., Type TT.....	1
8	00-448274	Kit - Service (Panel Mount) (Incls. Items 9 & 14 thru 17).....	1
9	00-448245	Kit - Security Seal (With Security Plate) (Incls. Items 10 thru 13).....	1
10	00-444424	Seal - Wire Roto (8 In.).....	1
11	00-183906	Screw (Special Fil. Hd.).....	1
12	WL-003-12	Lockwasher #8 Helical.....	1
13		Plate - Security (Part Of Item 9).....	1
14	SD-015-40	Self-Tapping Screw 8-32 x 3/8 Phil. Pan Hd., Type TT.....	2
15	00-448056	Bracket Assy. (USB Panel Mount).....	1
16	00-448030	Bracket Assy. (Panel Mount).....	1
17	SD-015-40	Self-Tapping Screw 8-32 x 3/8 Phil. Pan Hd., Type TT.....	2
18	SD-039-75	Self-Tapping Screw 8-32 x 3/8, Type TT (Black).....	3
19	00-447059	Cover - Network.....	1
20	00-447046	Grommet.....	1
21	SD-015-40	Self-Tapping Screw 8-32 x 3/8 Phil. Pan Hd., Type TT.....	1
22	00-447070	Cover - Connector Assy. (Optional).....	1
*23	00-448321	Bracket - ARA Board.....	1
24	00-449512	Board - Touchscreen Control.....	1
25	SC-112-42	Mach. Screw 6-32 x 1/2 Phil. Pan Hd.....	5
26	00-449454-00014	MICRO SD, PROGRAMMED, HT SERIES, 16G (V3.3.200).....	1
27	00-448420	Board - System Control (ARA - Dual).....	1
28	00-448039	Bracket, Panel Mount (Single USB).....	1
29	00-450134-00001	Micro SD, Programed, HT SERIES/ PREPACK 4.0.0.....	1

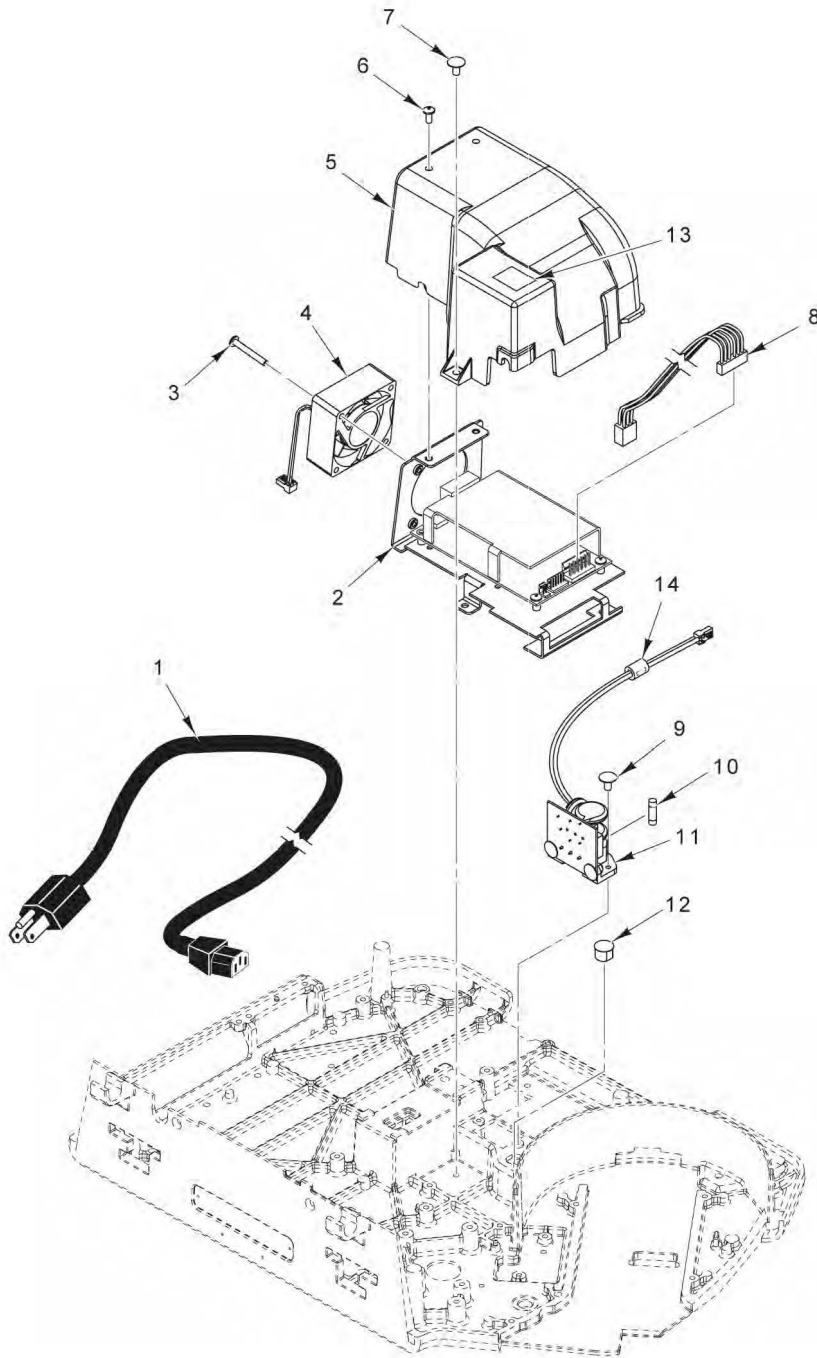
* ARA System Control PCB Retrofit Only



**ELEVATED DISPLAY
(10 IN.)**

**ELEVATED DISPLAY
(10 IN.)**

ILLUS. PL-60688	PART NO.	NAME OF PART	AMT.
1	00-448077	Housing Assy. (10 In.) (Front).....	1
2	00-447157	Display (10.1 In.).....	1
3	00-447943	Panel - Display Mounting.....	1
4	SC-018-30	Mach. Screw 8-32 x 1/4 Phil. Pan Hd.....	12
5	00-447929	Housing Assy. (Rear).....	1
6	00-447148	Block Assy. - Pivot.....	1
7	00-447143	Pin - Dowel.....	1
8	SC-120-37	Cap Screw 6-32 x 3/8 Hex Socket Hd. (SST).....	4
9	00-447710	Cap - Display Mount.....	1
10	00-447712	Collar.....	1
11	00-447714	Washer - Spring.....	2
12	00-447713	Washer - Thrust.....	1
13	00-447140	Tube - Display Mounting.....	1
14	SC-088-55	Set Screw 10-32 x 3/16 Hex Hdls., Half Dog Pt.....	2
15	SC-020-23	Mach. Screw 10-24 x 3/8 Phil. Flat Hd.....	4
16	00-251199	Tie - Cable (4 In. Long).....	1
17	00-448047	Cable Assy. (19 In.) (Located Inside Post).....	1
18	00-447192	Cable Assy. (30 In.) (Located Inside Scale).....	1
19	00-447937	Board Assy. (Interconnect).....	1
20	00-447686	Retainer (PCB).....	1
21	00-447132	Base - Elevated Display.....	1
22	WL-008-13	Lockwasher #10 Internal Shakeproof.....	2
23	SC-124-37	Cap Screw 10-24 x 1-3/8 Hex Socket Hd.....	2
24	00-447131	Plate - Cover.....	1
25	SD-015-40	Self-Tapping Screw 8-32 x 3/8 Phil. Pan Hd., Type TT.....	6
26	00-447952	Pad - Foam (Cut in Half).....	1

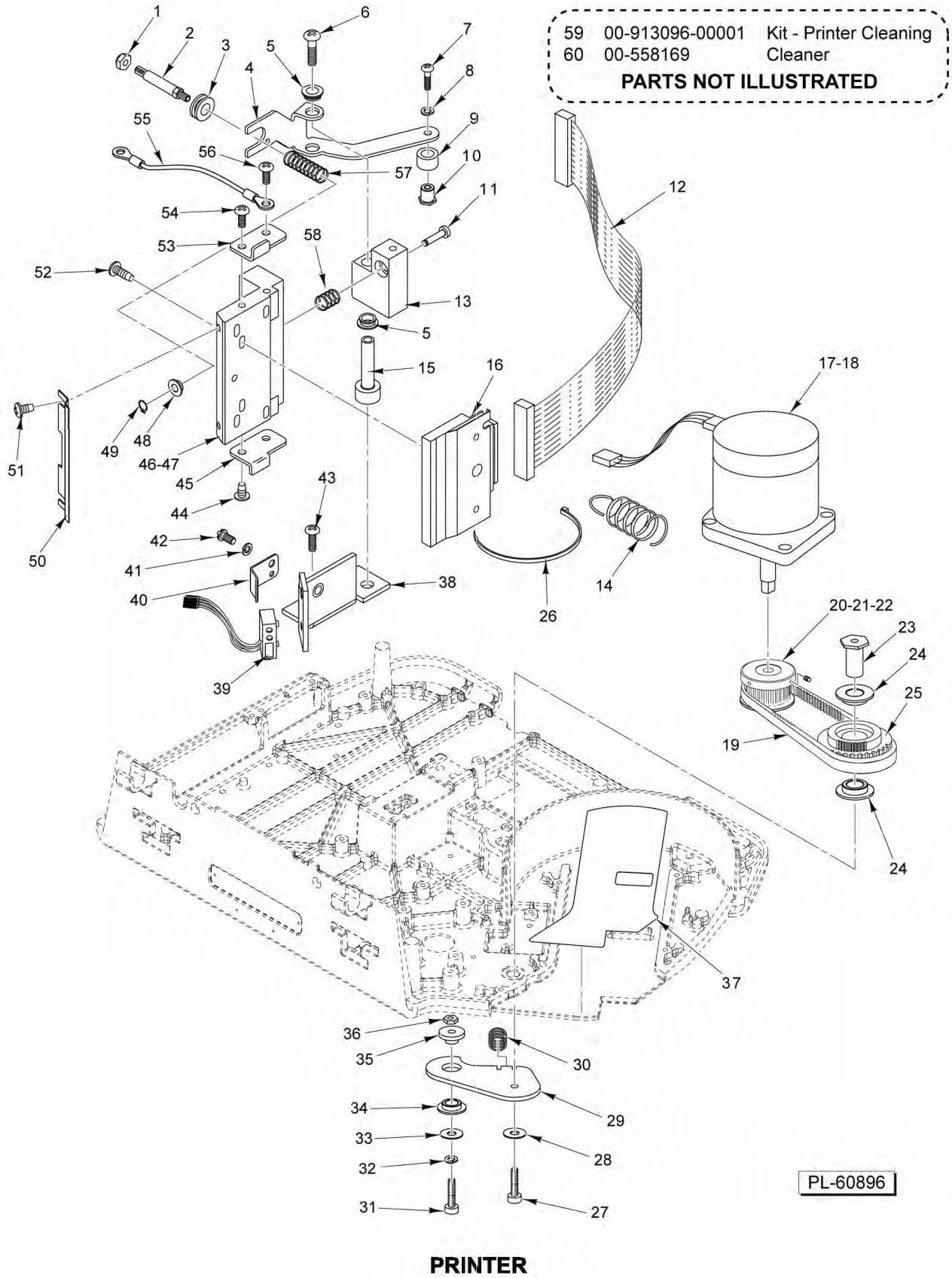


PL-60272

POWER SUPPLY

POWER SUPPLY

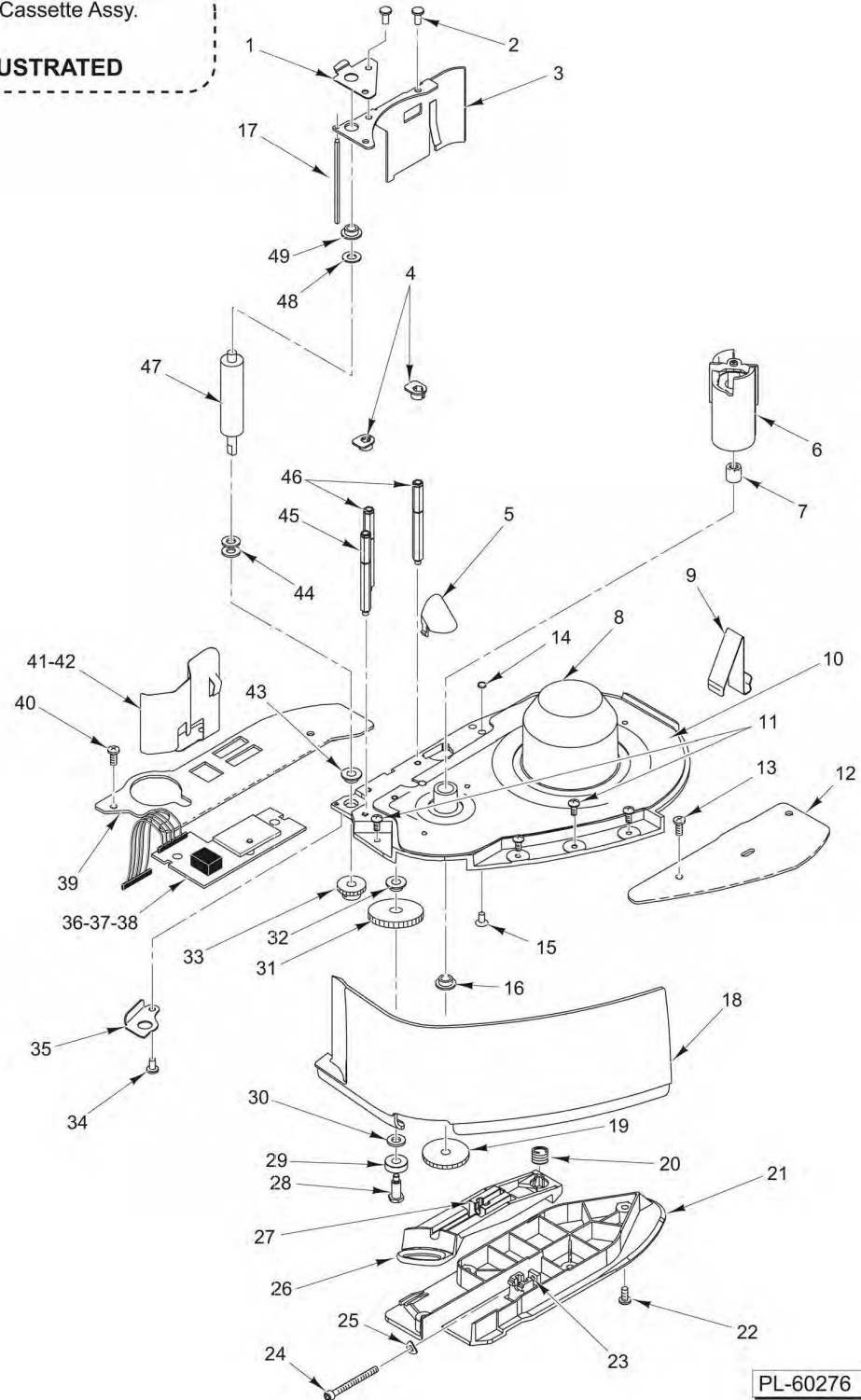
ILLUS.	PART NO.	NAME OF PART	AMT.
PL-60272			
1	00-044479	Cord - Power (120 V.).....	1
2	00-444870-00002	Power Supply & Baffle Assy.....	1
3	SA-021-55	Mach Screw Assy 8-32 v 3/8 Cap Hd.....	2
4	00-444906	Fan Assy.....	1
5	00-444799	Shroud - Power Supply.....	1
6	SC-129-33	Mach. Screw 8-32 x 3/8 Phil. Pan Hd.....	2
7	SD-015-40	Self-Tapping Screw 8-32 x 3/8 Phil. Pan Hd., Type TT.....	1
8	00-444769	Cable Assy. - DC Power.....	1
9	SD-015-38	Self-Tapping Screw 6-32 x 3/8 Phil. Pan Hd., Type TT.....	2
10	FE-025-32	Fuse (250 V., 3.0 Amp.) (SLO) (Power Input Board).....	1
11	00-448290	Board - Power Input (Incls. Item 10).....	1
12	PB-005-28	Plug - Button (1/2 In.).....	1
13	00-047052	Label - Fuse.....	1
14	00-447094	Ferrite (Clamp-On).....	1



PRINTER

ILLUS. PL-60896	PART NO.	NAME OF PART	AMT.
1	NS-031-49	Stop Nut 10-32 Hex (SST).....	1
2	00-043267	Stud - Adjusting.....	1
3	00-043382	Bushing - Stud.....	1
4	00-043299	Bracket - Spring Pivot.....	1
5	00-043253	Bushing - Nyliner.....	2
6	SD-038-05	Self-Tapping Screw 8-32 x 1-3/4 Phil. Pan Hd., Type TT.....	1
7	SC-018-31	Mach. Screw 8-32 x 3/8 Phil. Pan Hd.....	1
8	WL-008-07	Lockwasher #8 Internal Shakeproof.....	1
9	00-043385	Roller - Pivot Arm.....	1
10	00-043386	Retainer - Roller.....	1
11	00-047424	Shaft - Printhead Pivot.....	1
12	00-444846	Cable Assy. - Printhead.....	1
13	00-047423	Pivot Block - Printhead.....	1
14	00-043387	Spring - Extension.....	1
15	00-047441	Sleeve - Pivot.....	1
16	00-448003	Printhead - Thermal (Kyocera).....	1
17	00-440142-00002	Motor Assy. - Stepper.....	1
18	SD-015-40	Self-Tapping Screw 8-32 x 3/8 Phil. Pan Hd., Type TT.....	3
19	00-442823	Belt - Timing.....	1
20	00-442822	Pulley - Take-Up Motor.....	1
21	SC-047-74	Set Screw 8-32 x 1/4 Hdls. Cup Pt.....	2
22	00-512987	Adhesive (Loctite #222, Purple).....	AR
23	00-441758	Shaft - Pulley & Gear.....	1
24	00-043365	Bushing.....	2
25	00-043250	Pulley & Gear Assy. (Incls. Item 24).....	1
26	00-255502	Tie - Cable Locking.....	1
27	SC-092-36	Cap Screw 6-32 x 1/2 Hex Socket Hd.....	1
28	WL-008-02	Lockwasher #6 Internal Shakeproof.....	1
29	00-447373	Plate - Pivot (Incls. Item 34).....	1
30	00-048374	Spring - Printhead Adjusting.....	1
31	SC-111-83	Cap Screw 6-32 x 3/4 Hex Socket Hd.....	1
32	WL-008-02	Lockwasher #6 Internal Shakeproof.....	1
33	WS-019-41	Washer (SST).....	1
34	00-043365	Bushing.....	1
35	00-441760	Bushing - Gear Adjusting.....	1
36	NS-031-03	Stop Nut 6-32 Hex.....	1
37	00-441701	Label - Anti-Friction.....	1
38	00-047442	Bracket - Label Taken Mtg.....	1
39	00-043610	Sensor Assy. - Label Taken.....	1
40	00-043394	Bracket - Label Taken.....	1
41	WL-008-07	Lockwasher #8 Internal Shakeproof.....	1
42	SC-018-31	Mach. Screw 8-32 x 3/8 Phil. Pan Hd.....	1
43	SD-015-40	Self-Tapping Screw 8-32 x 3/8 Phil. Pan Hd., Type TT.....	2
44	SD-015-37	Self-Tapping Screw 6-32 x 1/4 Phil. Pan Hd., Type TT.....	2
45	00-047438	Stop - Printhead Lower.....	1
46	00-442996	Heat Sink and Bushing Assy. (Incls. Item 48).....	1
47	00-519504	Thermo Joint Compound (2 Oz.).....	AR
48	00-043365	Bushing.....	2
49	RR-006-22	Retaining Ring 1/4 In. (SST).....	1
50	00-032887	Tearbar.....	1
51	SD-015-37	Self-Tapping Screw 6-32 x 1/4 Phil. Pan Hd., Type TT.....	2
52	SA-021-46	Screw Assy. M3 x 0.5 x 12 mm Phil. Pan Hd.....	2
53	00-047437	Stop - Printhead Upper.....	1
54	SD-015-37	Self-Tapping Screw 6-32 x 1/4 Phil. Pan Hd., Type TT.....	1
55	00-049396	Wire - Drain (Ground).....	1
56	SD-015-37	Self-Tapping Screw 6-32 x 1/4 Phil. Pan Hd., Type TT.....	1
57	00-043333	Spring - Printhead.....	1
58	00-048374	Spring - Printhead Adjusting.....	1
59	00-913096-00001	Kit - Thermal Printer Cleaning.....	1
60	00-558169	Cleaner (Electronics) (12 Oz. Can).....	AR

50 00-444875-00005 Cassette Assy.
PART NOT ILLUSTRATED



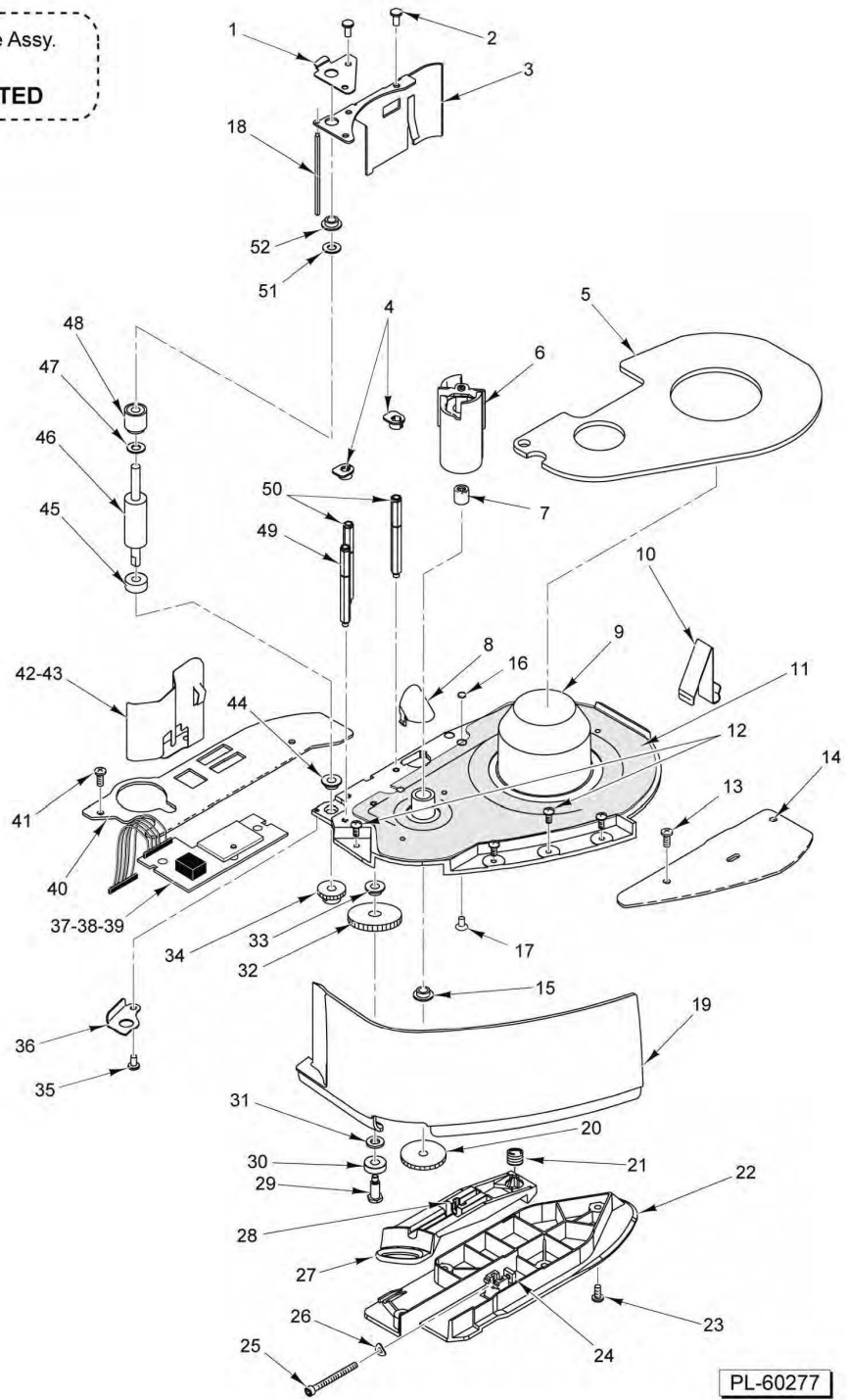
PL-60276

**CASSETTE
(WIDE LABEL)**

CASSETTE (WIDE LABEL)

ILLUS. PL-60276	PART NO.	NAME OF PART	AMT.
1	00-047456	Plate - Cassette Locating (Upper).....	1
2	00-048489	Mach. Screw 8-32 x 3/8 Phil. Pan Hd.....	3
3	00-047392	Retaining Plate - Roller.....	1
4	00-043369	Guide - Label.....	2
5	00-043367	Reflector.....	1
6	00-444660	Take-Up Assy.....	1
7	00-043396	Needle Bearing.....	1
8	00-043351	Base - Cassette.....	1
9	00-443735	Spring - Cassette Eject.....	1
10	00-440635	Label - Threading Instructions.....	1
11	SA-021-39	Screw Assy. 8-32 x 3/8 Phil. Pan Hd.....	4
12	00-043343	Rail - Guide (RH).....	1
13	SD-015-40	Self-Tapping Screw 8-32 x 3/8 Phil. Pan Hd., Type TT.....	2
14	00-446589	Magnet - Disc.....	1
15	00-446917	Mach. Screw 8-32 x 1/8 Phil. Pan Hd.....	1
16	00-043365	Bushing.....	1
17	00-043357	Peel Bar.....	1
18	00-447051	Cover - Cassette Front.....	1
19	00-043362	Gear - Take-Up (Incls. Set Screw).....	1
20	00-043356	Spring - Cassette Latch.....	1
21	00-043355	Guide - Cassette.....	1
22	SD-015-40	Self-Tapping Screw 8-32 x 3/8 Phil. Pan Hd., Type TT.....	4
23	NS-008-25	Nut 8-32 Sq. Hd.....	1
24	00-441172	Cap Screw 8-32 x 1-3/4 Hex Socket Hd.....	1
25	00-043271	Washer - Wavy.....	1
26	00-043353	Latch - Cassette.....	1
27	00-043354	Pivot Block - Adjust.....	1
28	00-043363	Shaft - Idler.....	1
29	00-131761	Ball Bearing - Double-Shielded Radial.....	1
30	00-043269	Washer.....	1
31	00-032974	Gear - Idler (Incls. Item 32).....	1
32	00-043365	Bushing.....	1
33	00-043360	Gear - Roller (Incls. Set Screw).....	1
34	SC-018-34	Mach. Screw 8-32 x 1/2 Phil. Pan Hd.....	1
35	00-047457	Plate - Cassette Locating (Lower).....	1
36	00-446820	Kit - Media Hall Sensor.....	1
37	00-044631	Insulator - Media Sensor Board.....	1
38	SD-015-40	Self-Tapping Screw 8-32 x 3/8 Phil. Pan Hd., Type TT.....	2
39	00-043270	Rail - Guide (LH).....	1
40	SD-015-40	Self-Tapping Screw 8-32 x 3/8 Phil. Pan Hd., Type TT.....	2
41	00-046479	Spring - Label Guide.....	1
42	SD-015-40	Self-Tapping Screw 8-32 x 3/8 Phil. Pan Hd., Type TT.....	1
43	00-047458	Bearing - Flange.....	1
44	00-043269	Washer.....	2
45	00-047455	Standoff.....	1
46	00-032914	Standoff.....	2
47	00-047506	Roller - Print.....	1
48	00-043269	Washer.....	1
49	00-043365	Bushing.....	1
50	00-444875-00005	Cassette Assy.....	1

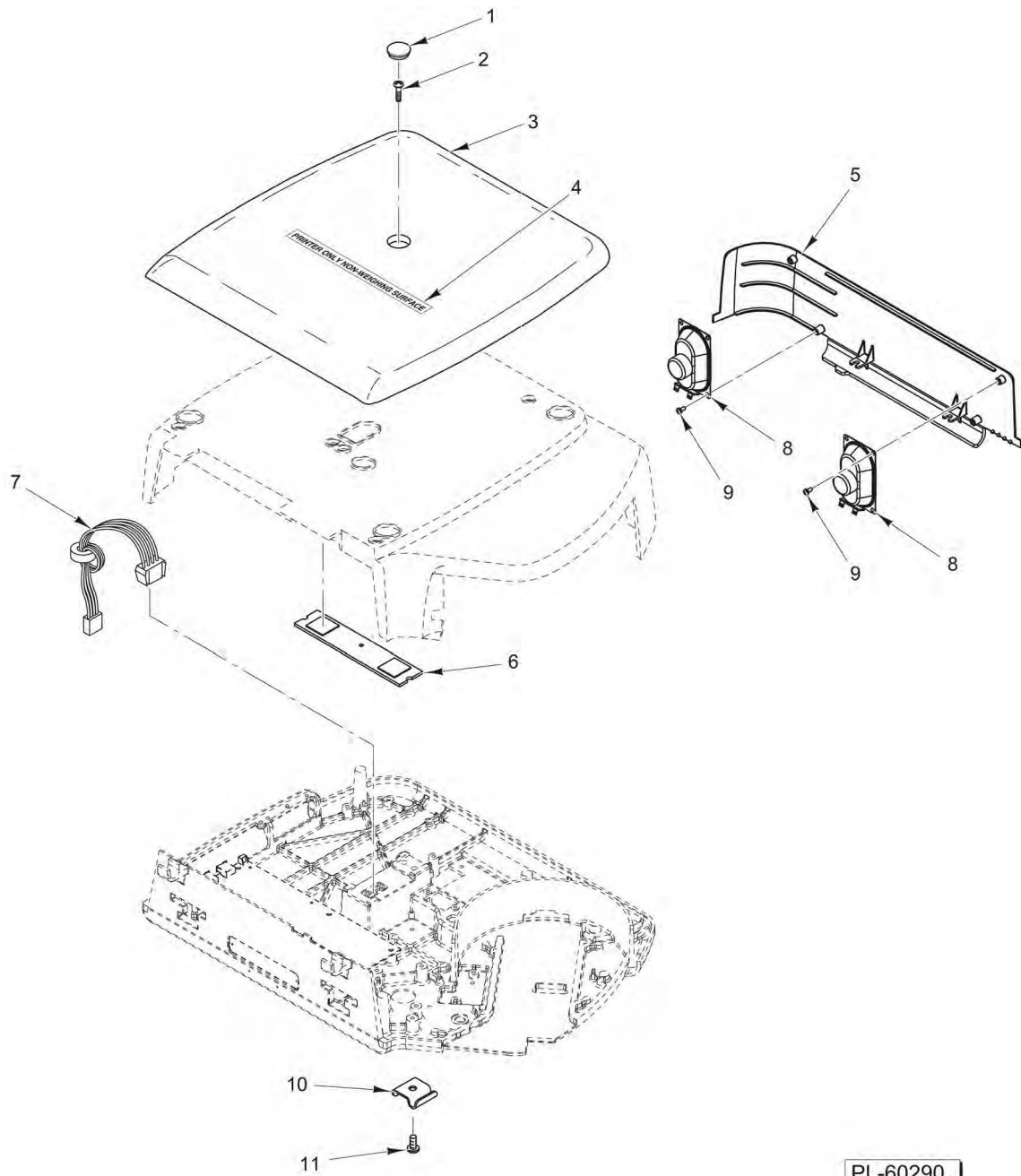
53 00-447770 Cassette Assy.
PART NOT ILLUSTRATED



**CASSETTE
(NARROW LABEL)**

**CASSETTE
(NARROW LABEL)**

ILLUS. PL-60277	PART NO.	NAME OF PART	AMT.
1	00-047456	Plate - Cassette Locating (Upper).....	1
2	00-048489	Mach. Screw 8-32 x 3/8 Phil. Pan Hd.....	3
3	00-047392	Retaining Plate - Roller.....	1
4	00-043369	Guide - Label.....	2
5	00-032905	Spacer - Narrow Label.....	1
6	00-444660	Take-Up Assy.....	1
7	00-043396	Needle Bearing.....	1
8	00-043367	Reflector.....	1
9	00-043351	Base - Cassette.....	1
10	00-443735	Spring - Cassette Eject.....	1
11	00-440635	Label - Threading Instructions.....	1
12	SA-021-39	Screw Assy. 8-32 x 3/8 Phil. Pan Hd.....	4
13	SD-015-40	Self-Tapping Screw 8-32 x 3/8 Phil. Pan Hd., Type TT.....	2
14	00-043343	Rail - Guide (RH).....	1
15	00-043365	Bushing.....	1
16	00-446589	Magnet - Disc.....	1
17	00-446917	Mach. Screw 8-32 x 1/8 Phil. Pan Hd.....	1
18	00-043357	Peel Bar.....	1
19	00-447051	Cover - Cassette Front.....	1
20	00-043362	Gear - Take-Up (Incls. Set Screw).....	1
21	00-043356	Spring - Cassette Latch.....	1
22	00-043355	Guide - Cassette.....	1
23	SD-015-40	Self-Tapping Screw 8-32 x 3/8 Phil. Pan Hd., Type TT.....	4
24	NS-008-25	Nut 8-32 Sq. Hd.....	1
25	00-441172	Cap Screw 8-32 x 1-3/4 Hex Socket Hd.....	1
26	00-043271	Washer - Wavy.....	1
27	00-043353	Latch - Cassette.....	1
28	00-043354	Pivot Block - Adjust.....	1
29	00-043363	Shaft - Idler.....	1
30	00-131761	Ball Bearing - Double-Shielded Radial.....	1
31	00-043269	Washer.....	1
32	00-032974	Gear - Idler (Incls. Item 33).....	1
33	00-043365	Bushing.....	1
34	00-043360	Gear - Roller (Incls. Set Screw).....	1
35	SC-018-34	Mach. Screw 8-32 x 1/2 Phil. Pan Hd.....	1
36	00-047457	Plate - Cassette Locating (Lower).....	1
37	00-446820	Kit - Media Hall Sensor.....	1
38	00-044631	Insulator - Media Sensor Board.....	1
39	SD-015-40	Self-Tapping Screw 8-32 x 3/8 Phil. Pan Hd., Type TT.....	2
40	00-043270	Rail - Guide (LH).....	1
41	SD-015-40	Self-Tapping Screw 8-32 x 3/8 Phil. Pan Hd., Type TT.....	2
42	00-046479	Spring - Label Guide.....	1
43	SD-015-40	Self-Tapping Screw 8-32 x 3/8 Phil. Pan Hd., Type TT.....	1
44	00-047458	Bearing - Flange.....	1
45	00-032930	Spacer - Narrow Roller Bottom.....	1
46	00-047505	Roller - Print.....	1
47	00-032915	Spacer - Narrow Roller.....	1
48	00-047504	Support - Roller.....	1
49	00-047455	Standoff.....	1
50	00-032914	Standoff.....	2
51	00-043269	Washer.....	1
52	00-043365	Bushing.....	1
53	00-447770	Cassette Assy. - Narrow Label.....	1

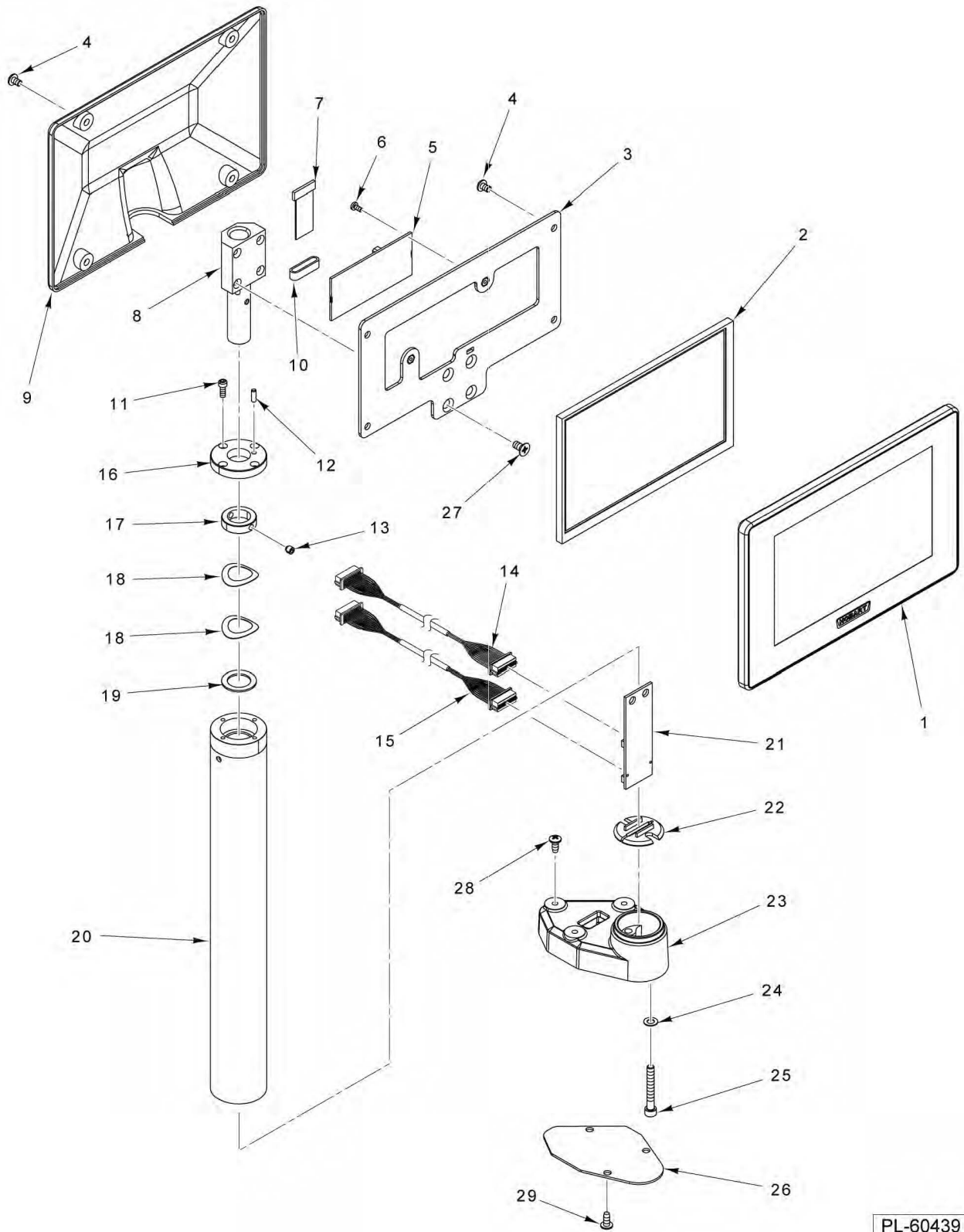


PL-60290

**PRINTER ONLY
(ML-29352, ML-29371, & ML-29382)**

PRINTER ONLY
(ML-29352, ML-29371, & ML-29382)

ILLUS.	PART NO.	NAME OF PART	AMT.
PL-60290			
1	00-447137	Plug - Cover.....	1
2	SC-018-31	Mach. Screw 8-32 x 3/8 Phil. Pan Hd.....	1
3	00-445262-00005	Cover - Printer Top (Black).....	1
4	00-445215	Label - Printer.....	1
5	00-447052	Panel - Housing Filler.....	1
6	00-447111	Bracket Assy. - Cover.....	1
7	00-445270-00001	Cable Assy.....	1
8	00-447030	Speaker Assy.....	2
9	SC-018-28	Mach. Screw 6-32 x 1/4 Phil. Pan Hd.....	4
10	00-443053	Clamp.....	1
11	SD-015-41	Self-Tapping Screw 8-32 x 1/2 Phil. Pan Hd., Type TT.....	1

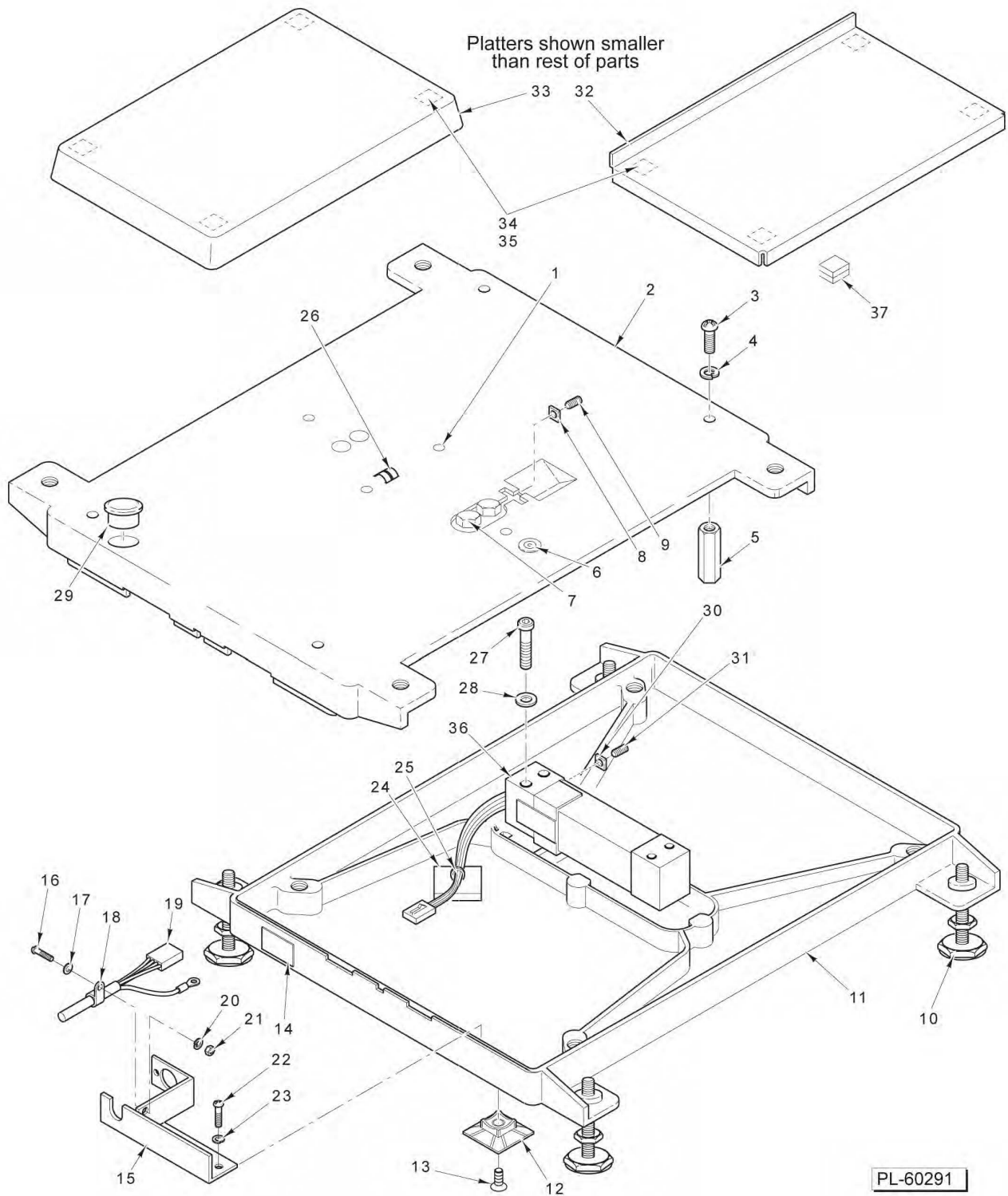


PL-60439

**ELEVATED DISPLAY
(7 IN.)**

**ELEVATED DISPLAY
(7 IN.)**

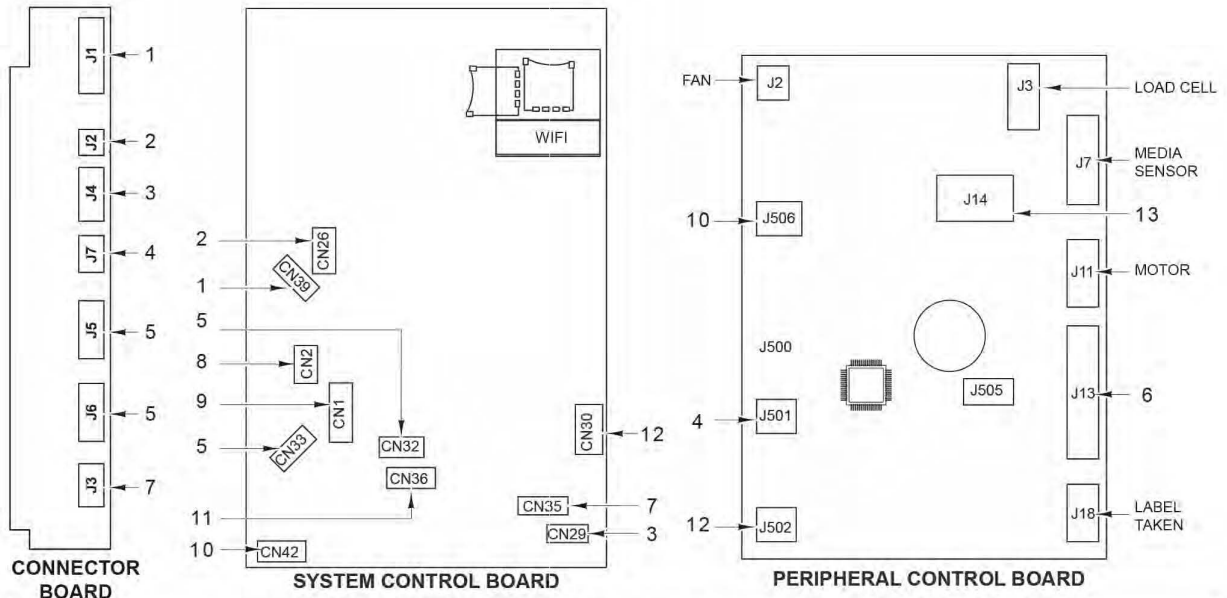
ILLUS. PL-60439	PART NO.	NAME OF PART	AMT.
1	00-447763	Housing Assy. (Front).....	1
2	00-447762	Display (Color).....	1
3	00-447122	Plate - Display Retainer.....	1
4	SC-018-30	Mach. Screw 8-32 x 1/4 Phil. Pan Hd.....	8
5	00-447162	Board Assy.....	1
6	SC-018-68	Mach. Screw 4-40 x 1/4 Phil. Pan Hd.....	2
7	00-447199	Cable Assy.....	1
8	00-447148	Block Assy. - Pivot.....	1
9	00-447126	Housing Assy. (Rear).....	1
10	00-447066	Cable - Flex Ribbon (Ferrite).....	1
11	SC-120-37	Cap Screw 6-32 x 3/8 Hex Socket Hd. (SST).....	4
12	00-447143	Pin - Dowel.....	1
13	SC-088-55	Set Screw 10-32 x 3/16 Hex Hdls., Half Dog Pt.....	2
14	00-447032	Cable Assy. (19 In.) (Located Inside Post).....	1
15	00-447192	Cable Assy. (30 In.) (Located Inside Scale).....	1
16	00-447710	Cap - Display Mount.....	1
17	00-447712	Collar.....	1
18	00-447714	Washer - Spring.....	2
19	00-447713	Washer - Thrust.....	1
20	00-447140	Tube - Display Mounting.....	1
21	00-447190	Board Assy. (Repeater).....	1
22	00-447686	Retainer (PCB).....	1
23	00-447132	Base - Elevated Display.....	1
24	WL-008-13	Lockwasher #10 Internal Shakeproof.....	2
25	SC-124-37	Cap Screw 10-24 x 1-3/8 Hex Socket Hd.....	2
26	00-447131	Plate - Cover.....	1
27	SC-020-23	Mach. Screw 10-24 x 3/8 Phil. Flat Hd.....	4
28	SD-015-40	Self-Tapping Screw 8-32 x 3/8 Phil. Pan Hd., Type TT.....	3
29	SD-015-40	Self-Tapping Screw 8-32 x 3/8 Phil. Pan Hd., Type TT.....	3



**SCALE UNIT
(USED WITH TWO-PIECE SCALE/PRINTER)**

**SCALE UNIT
(USED WITH TWO-PIECE SCALE/PRINTER)**

ILLUS. PL-60291	PART NO.	NAME OF PART	AMT.
1	SC-123-20	Set Screw 10-32 x 3/8 Hex Hdls., Socket Hd.....	2
2	00-041559	Support - Platter.....	1
3	SC-113-08	Mach. Screw 10-32 x 1/2 Phil. Pan Hd.....	4
4	WL-004-40	Lockwasher 10 Helical.....	4
5	00-441780	Stop - Loadcell.....	4
6	00-013931	Level - Spirit.....	1
7	SC-110-12	Cap Screw 1/4-20 x 5/8 Hex Hd.....	2
8	NS-046-58	Nut 10-32 Square.....	1
9	SC-123-20	Set Screw 10-32 x 3/8 Hex Hdls., Socket Hd.....	1
10	00-093160	Foot - Leveling Screw.....	4
11	00-042604	Base Assy.....	1
12	00-446051	Holder - Tie-Down.....	1
13	SC-022-07	Mach. Screw 8-32 x 1/2 Slotted Flat Hd. (SST).....	1
14	00-184534	Label - Capacity.....	1
15	00-441657	Clamp - Cable.....	1
16	SC-018-31	Mach. Screw 8-32 x 3/8 Phil. Pan Hd.....	1
17	WS-019-41	Washer (SST).....	1
18	00-253363	Clamp.....	1
19	00-183634	Cable - Scale.....	1
20	WL-003-12	Lockwasher #8 Helical.....	1
21	NS-009-12	Nut 8-32 Hex.....	1
22	SC-018-31	Mach. Screw 8-32 x 3/8 Phil. Pan Hd.....	2
23	WL-003-12	Lockwasher #8 Helical.....	2
24	00-255503	Mount - Cable Tie.....	1
25	00-251199	Tie - Cable (4 In. Long).....	1
26	00-184929	Contact - Compression Spring (Qty. of 8).....	AR
27	SC-120-70	Cap Screw 1/4-20 x 1-5/8 Hex Socket Hd.....	2
28	WL-003-39	Lockwasher 1/4 Light.....	2
29	00-041562	Plug - Transparent (1/2).....	1
30	NS-046-58	Nut 10-32 Square.....	1
31	SC-123-20	Set Screw 10-32 x 3/8 Hex Hdls., Socket Hd.....	1
32	00-043813	Platter (Incls. Items 34 & 35).....	1
33	00-043812	Platter (Incls. Items 34 & 35).....	1
34	00-258959	Fastener - Dual Lock.....	4
35	00-258958	Fastener - Dual Lock.....	4
36	00-443075	Load Cell - Multiple Range (15 kg) (ML-29256).....	1
37	00-259185	Pad - Platter.....	4



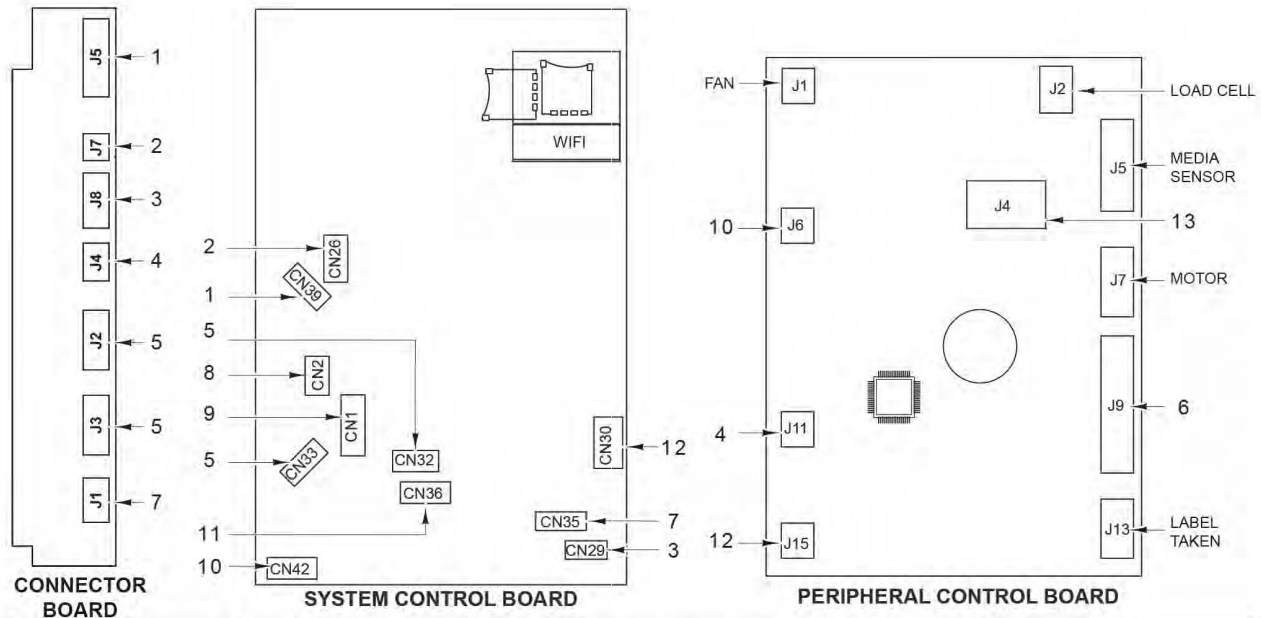
ITEM	CABLE PN	CONNECTOR BOARD CONNECTOR	SYS CNTR BOARD CONNECTOR	PERIPHERAL BOARD CONNECTOR	FUNCTION (COMPONENT)
1	00-447027	J1	CN39	NA	ETHERNET - DATA (CABLE)
2	00-447028	J2	CN26	NA	ETHERNET - LED (CABLE)
3	00-447029	J4	CN29	NA	AUDIO (CABLE)
4	00-447025	J7	NA	J501	SERVICE SWITCH (CABLE)
5	00-447024	J5	CN32	NA	USB - HUB (CABLE)
		J6	CN33	NA	USB - HUB (CABLE)
6	00-444846	NA	NA	J13	PRINthead DATA (CABLE)
7	00-447026	J3	CN35	NA	REBOOT / SHUTDOWN SWITCH (CABLE)
8	00-447032	NA	CN2	NA	CUSTOMER DISPLAY (CABLE)
9	00-447095	NA	CN1	NA	OPERATOR DISPLAY (CABLE)
10	00-447023	NA	CN42	J506	24 VDC POWER (CABLE)
11	00-447167	NA	CN36	NA	TOUCHSCREEN (CABLE)
12	00-447544	NA	CN30	J502	USB - HOST (CABLE)
13	00-444769	NA	NA	J14	DC POWER (CABLE)

PL-65182

**CABLES - CONNECTOR BOARD
(SYSTEM CONTROL / PERIPHERAL BOARD)
(GREEN PCB)**

**CABLES - CONNECTOR BOARD
(SYSTEM CONTROL / PERIPHERAL BOARD)
(GREEN PCB)**

ILLUS. PL-65182	PART NO.	NAME OF PART	AMT.
1	00-447027	Cable Assy. - Ethernet Data.....	1
2	00-447028	Cable Assy. - Ethernet LED.....	1
3	00-447029	Cable Assy. - Audio.....	1
4	00-447025	Cable Assy. - Service Switch.....	1
5	00-447024	Cable Assy. - USB Hub.....	2
6	00-444846	Cable Assy. - Printhead Data.....	1
7	00-447026	Cable Assy. - Reboot Switch.....	1
8	00-447032	Cable Assy. - Customer Display.....	1
9	00-447095	Cable Assy. - Operator Display.....	1
10	00-447023	Cable Assy. - 24 VDC Power.....	1
11	00-447167	Cable Assy. - Touchscreen.....	1
12	00-447544	Cable Assy. - USB (Host).....	1
13	00-444769	Cable Assy. - DC Power.....	1



ITEM	CABLE PN	CONNECTOR BOARD CONNECTOR	SYS CNTR BOARD CONNECTOR	PERIPHERAL BOARD CONNECTOR	FUNCTION (COMPONENT)
1	00-447524	J5	CN39	NA	ETHERNET - DATA (CABLE)
2	00-447028	J7	CN26	NA	ETHERNET - LED (CABLE)
3	00-447029	J8	CN29	NA	AUDIO (CABLE)
4	00-447025	J4	NA	J11	SERVICE SWITCH (CABLE)
5	00-447024	J2	CN32	NA	USB - HUB (CABLE)
		J3	CN33	NA	USB - HUB (CABLE)
6	00-444846	NA	NA	J9	PRINTHEAD DATA (CABLE)
7	00-447026	J1	CN35	NA	REBOOT / SHUTDOWN SWITCH (CABLE)
8	00-447032	NA	CN2	NA	CUSTOMER DISPLAY (CABLE)
9	00-447095	NA	CN1	NA	OPERATOR DISPLAY (CABLE)
10	00-447023	NA	CN42	J6	24 VDC POWER (CABLE)
11	00-447167	NA	CN36	NA	TOUCHSCREEN (CABLE)
12	00-447544	NA	CN30	J15	USB - HOST (CABLE)
13	00-444769	NA	NA	J4	DC POWER (CABLE)

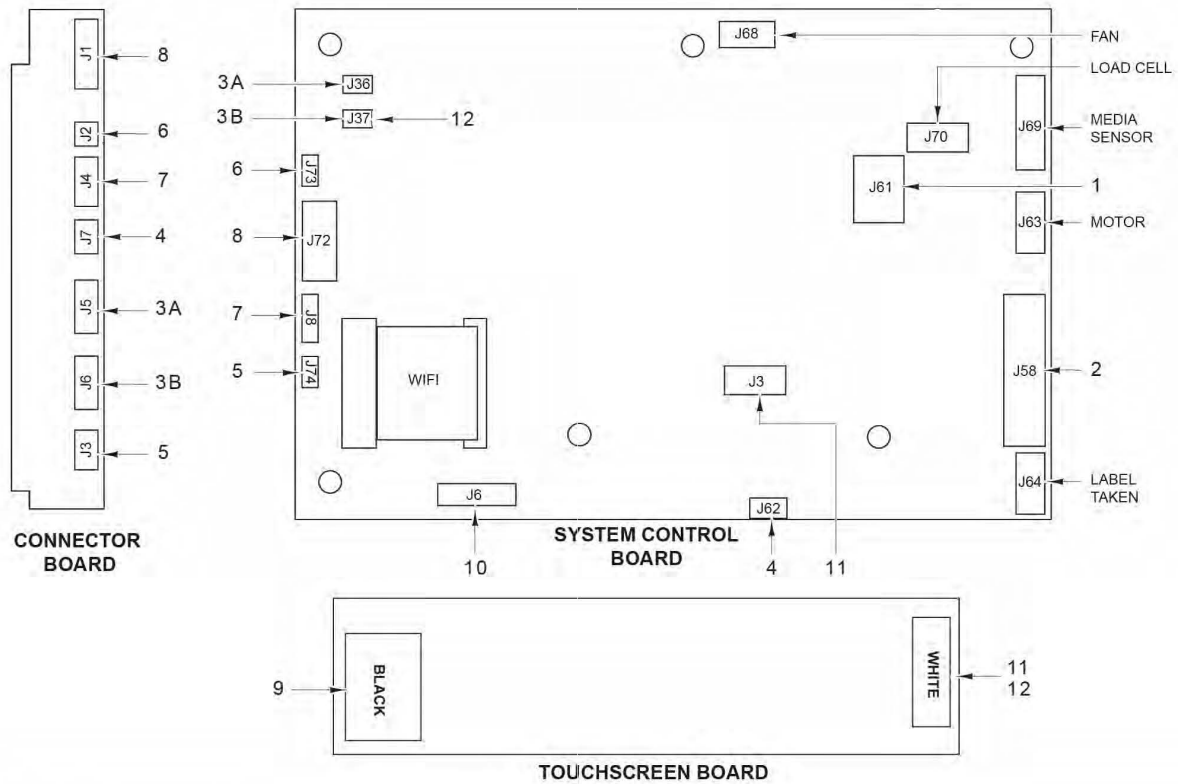
PL-65183

**CABLES - CONNECTOR BOARD
(SYSTEM CONTROL / PERIPHERAL BOARD)
(BLUE / BLACK PCB)**

**CABLES - CONNECTOR BOARD
(SYSTEM CONTROL / PERIPHERAL BOARD)
(BLUE / BLACK PCB)**

ILLUS. PL-65183	PART NO.	NAME OF PART	AMT.
1	00-447524	Cable Assy. - Ethernet Data.....	1
2	00-447028	Cable Assy. - Ethernet LED.....	1
3	00-447029	Cable Assy. - Audio.....	1
4	00-447025	Cable Assy. - Service Switch.....	1
5	00-447024	Cable Assy. - USB Hub.....	2
6	00-444846	Cable Assy. - Printhead Data.....	1
7	00-447026	Cable Assy. - Reboot Switch.....	1
8	00-447032	Cable Assy. - Customer Display.....	1
9	00-447095	Cable Assy. - Operator Display.....	1
10	00-447023	Cable Assy. - 24 VDC Power.....	1
11	00-447167	Cable Assy. - Touchscreen.....	1
12	00-447544	Cable Assy. - USB (Host).....	1
13	00-444769	Cable Assy. - DC Power.....	1

HTi SERIES SCALES REPLACEMENT PARTS



ITEM	CABLE PN	CONNECTOR BOARD CONNECTOR	SYS CNTR BOARD CONNECTOR	TOUCH SCREEN BOARD CONNECTOR	FUNCTION (COMPONENT)
1	00-444769	NA	J61	NA	DC POWER (CABLE)
2	00-444846	NA	J58	NA	PRINthead DATA (CABLE)
3A	00-447024	J5	J36	NA	USB (CABLE)
3B		J6	J37	NA	USB (CABLE)
4	00-447025	J7	J62	NA	SERVICE SWITCH (CABLE)
5	00-447026	J3	J74	NA	REBOOT / SHUTDOWN SWITCH (CABLE)
6	00-447028	J2	J73	NA	ETHERNET - LED (CABLE)
7	00-447029	J4	J8	NA	AUDIO (CABLE)
8	00-447027	J1	J72	NA	ETHERNET - DATA (CABLE)
9	00-448198	NA	NA	BLACK	TOUCHSCREEN (CABLE)
10	00-448199	NA	J6	NA	OPERATOR DISPLAY (CABLE)
11	00-449483	NA	J3	WHITE	TOUCHSCREEN (CABLE)(Prior to 451198632)
12	00-449864	NA	J37	WHITE	TOUCHSCREEN (CABLE)(After 451198632)

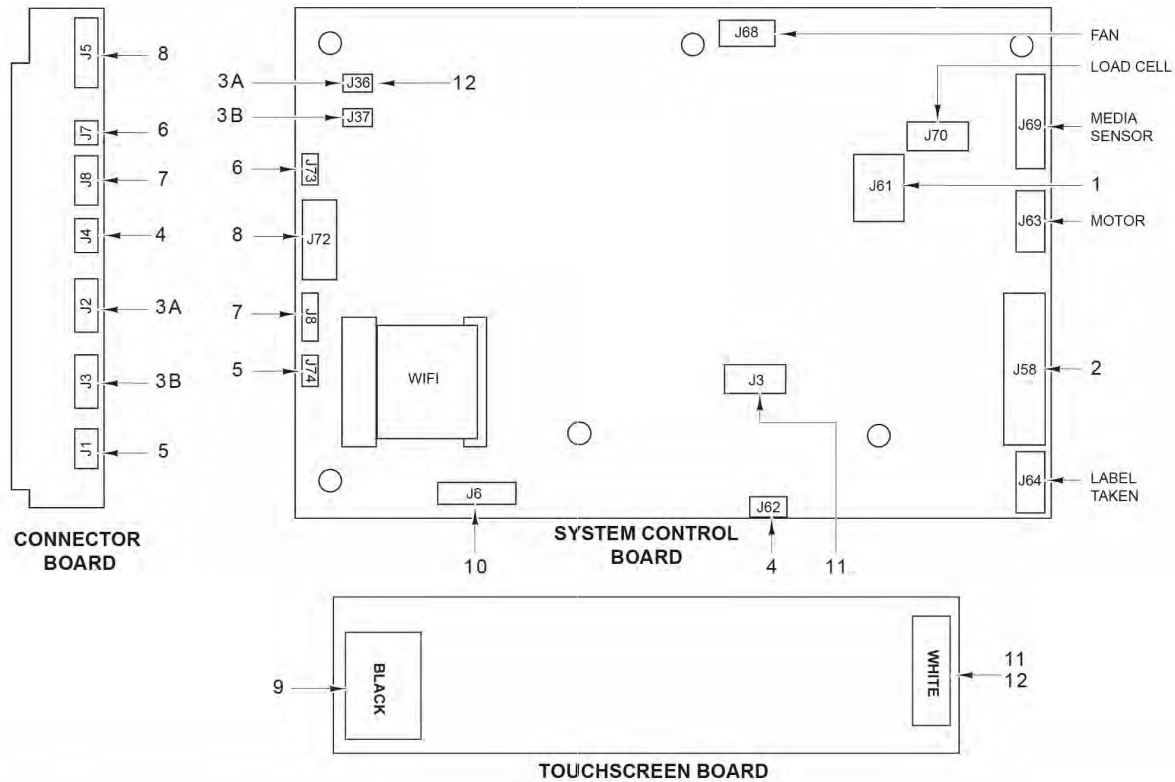
PL-65186

**CABLES - CONNECTOR BOARD
(ARA SYSTEM CONTROL BOARD)
(GREEN PCB)**

**CABLES - CONNECTOR BOARD
(ARA SYSTEM CONTROL BOARD)
(GREEN PCB)**

ILLUS. PL-65186	PART NO.	NAME OF PART	AMT.
1	00-444769	Cable Assy. - DC Power.....	1
2	00-444846	Cable Assy. - Printhead Data.....	1
3	00-447024	Cable Assy. - USB.....	2
4	00-447025	Cable Assy. - Service.....	1
5	00-447026	Cable Assy. - Reboot / Shutdown.....	1
6	00-447028	Cable Assy. - Ethernet LED.....	1
7	00-447029	Cable Assy. - Audio.....	1
8	00-447027	Cable Assy. - Ethernet Data.....	1
9	00-448198	Cable Assy. - Touchscreen.....	1
10	00-448199	Cable Assy. - Operator Display.....	1
11	00-449483	Cable Assy. - USB Touchscreen (Prior to 451198632).....	1
12	00-449864	Cable Assy. USB to Touchscreen Brd. (After 451198632 or has been updated).....	1

HTi SERIES SCALES REPLACEMENT PARTS



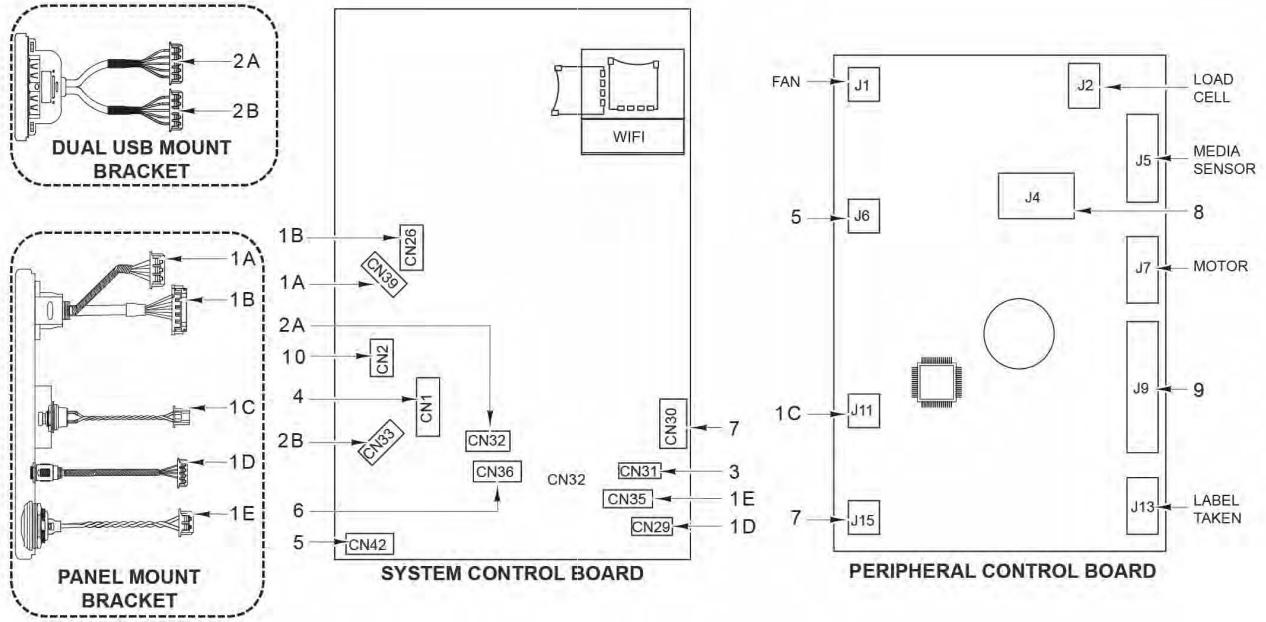
ITEM	CABLE PN	CONNECTOR BOARD CONNECTOR	SYS CNTR BOARD CONNECTOR	TOUCH SCREEN BOARD CONNECTOR	FUNCTION (COMPONENT)
1	00-444769	NA	J61	NA	DC POWER (CABLE)
2	00-444846	NA	J58	NA	PRINthead DATA (CABLE)
3A	00-447024	J2	J36	NA	USB (CABLE)
3B		J3	J37	NA	USB (CABLE)
4	00-447025	J4	J62	NA	SERVICE SWITCH (CABLE)
5	00-447026	J1	J74	NA	REBOOT / SHUTDOWN SWITCH (CABLE)
6	00-447028	J7	J73	NA	ETHERNET - LED (CABLE)
7	00-447029	J8	J8	NA	AUDIO (CABLE)
8	00-447524	J5	J72	NA	ETHERNET - DATA (CABLE)
9	00-448198	NA	NA	BLACK	TOUCHSCREEN (CABLE)
10	00-448199	NA	J6	NA	OPERATOR DISPLAY (CABLE)
11	00-449483	NA	J3	WHITE	TOUCHSCREEN (CABLE)(Prior to 451198632)
12	00-449864	NA	J37	WHITE	TOUCHSCREEN (CABLE)(After 451198632)

PL-65185

**CABLES - CONNECTOR BOARD
(ARA SYSTEM CONTROL BOARD)
(BLUE / BLACK PCB)**

**CABLES - CONNECTOR BOARD
(ARA SYSTEM CONTROL BOARD)
(BLUE / BLACK PCB)**

ILLUS. PL-65185	PART NO.	NAME OF PART	AMT.
1	00-444769	Cable Assy. - DC Power.....	1
2	00-444846	Cable Assy. - Printhead Data.....	1
3	00-447024	Cable Assy. - USB.....	2
4	00-447025	Cable Assy. - Service.....	1
5	00-447026	Cable Assy. - Reboot / Shutdown.....	1
6	00-447028	Cable Assy. - Ethernet LED.....	1
7	00-447029	Cable Assy. - Audio.....	1
8	00-447524	Cable Assy. - Ethernet Data.....	1
9	00-448198	Cable Assy. - Touchscreen.....	1
10	00-448199	Cable Assy. - Operator Display.....	1
11	00-449483	Cable Assy. - USB Touchscreen.....	1



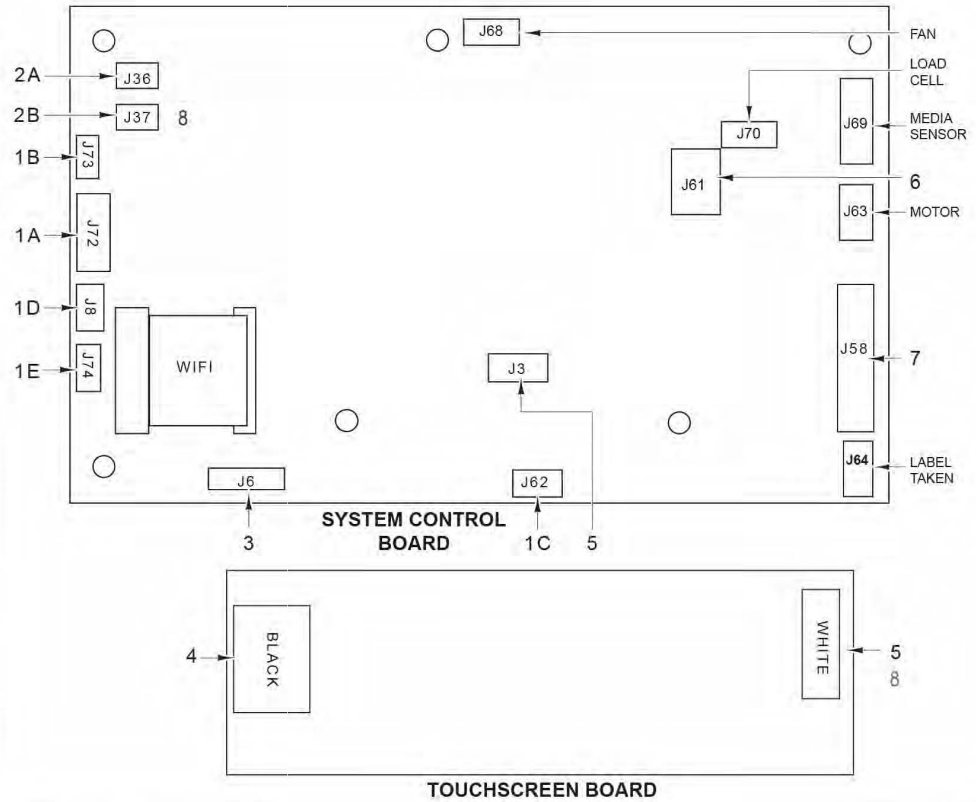
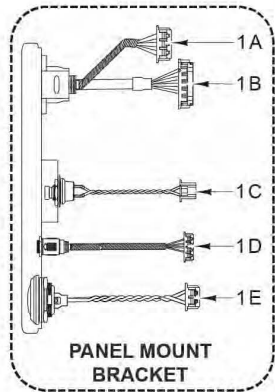
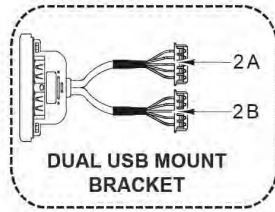
ITEM	CABLE PN	SYS CNTRL BOARD CONNECTOR	PERIPHERAL BOARD CONNECTOR	FUNCTION (COMPONENT)
1A	00-448030	CN39	NA	ETHERNET - DATA (PANEL MOUNT BRACKET CABLE)
1B		CN26	NA	ETHERNET - LED (PANEL MOUNT BRACKET CABLE)
1C		NA	J11	SERVICE SWITCH (PANEL MOUNT BRACKET CABLE)
1D		CN29	NA	AUDIO (PANEL MOUNT BRACKET)
1E		CN35	NA	REBOOT / SHUTDOWN SWITCH (PANEL MOUNT BRACKET CABLE)
2A	00-448056	CN33	NA	USB (DUAL USB MOUNTING BRACKET CABLE)
2B		CN32	NA	USB (DUAL USB MOUNTING BRACKET CABLE)
3	00-448195	CN31	NA	USB - SCANNER (CABLE)
4	00-448199	CN1	NA	OPERATOR DISPLAY (CABLE)
5	00-447023	CN42	J6	24 VDC POWER (CABLE)
6	00-448198	CN36	NA	TOUCHSCREEN (CABLE)
7	00-447544	CN30	J15	USB - HOST (CABLE)
8	00-444769	NA	J4	DC POWER (CABLE)
9	00-444846	NA	J9	PRINTEHAD DATA (CABLE)
10	00-447032	CN2	NA	CUSTOMER DISPLAY (CABLE)

PL-65184

**CABLES - PANEL MOUNT
(SYSTEM CONTROL / PERIPHERAL BOARD)
(BLUE / BLACK PCB)**

**CABLES - PANEL MOUNT
(SYSTEM CONTROL / PERIPHERAL BOARD)
(BLUE / BLACK PCB)**

ILLUS.	PART NO.	NAME OF PART	AMT.
PL-65184			
1	00-448030	Bracket Assy. (Panel Mount).....	1
2	00-448056	Bracket Assy. (USB Panel Mount).....	1
3	00-448195	Cable Assy. - USB (Scanner).....	1
4	00-448199	Cable Assy. - Operator Display.....	1
5	00-447023	Cable Assy. - 24 VDC Power.....	1
6	00-448198	Cable Assy. - Touchscreen.....	1
7	00-447544	Cable Assy. - USB (Host).....	1
8	00-444769	Cable Assy. - DC Power.....	1
9	00-444846	Cable Assy. - Printhead Data.....	1
10	00-447032	Cable Assy. (Customer Display).....	1



ITEM	CABLE PN	SYS CNTR BOARD CONNECTOR	TOUCH SCREEN BOARD CONNECTOR	FUNCTION (COMPONENT)
1A	00-448030	J72	NA	ETHERNET - DATA (PANEL BRACKET MOUNT CABLE)
1B		J73		ETHERNET - LED (PANEL BRACKET MOUNT CABLE)
1C		J62		SERVICE SWITCH (PANEL MOUNT BRACKET CABLE)
1D		J8		AUDIO (PANEL MOUNT BRACKET)
1E		J74		REBOOT / SHUTDOWN SWITCH (PANEL MOUNT BRACKET CABLE)
2A	00-448056	J36	NA	USB (DUAL USB MOUNTING BRACKET)
2B		J37		USB (DUAL USB MOUNTING BRACKET)
3	00-448199	J6	NA	OPERATOR DISPLAY (CABLE)
4	00-448198	NA	BLACK	TOUCHSCREEN (CABLE)(OUT TO CONSOLE)
5	00-449483	J3	WHITE	TOUCHSCREEN (CABLE) (PRIOR TO 451198632)
6	00-444769	J61	NA	DC POWER (CABLE)
7	00-444846	J58	NA	PRINTHEAD DATA (CABLE)
8	00-449864	J36	WHITE	TOUCHSCREEN (CABLE)(AFTER 451198632)

PL-65165

**CABLES - PANEL MOUNT
(ARA SYSTEM CONTROL BOARD)**

**CABLES - PANEL MOUNT
(ARA SYSTEM CONTROL BOARD)**

ILLUS.	PART NO.	NAME OF PART	AMT.
PL-85165			
1	00-448030	Bracket Assy. (Panel Mount).....	1
2	00-448056	Bracket Assy. (USB Panel Mount).....	1
3	00-448199	Cable Assy. - Operator Display.....	1
4	00-448198	Cable Assy. - Touchscreen.....	1
5	00-449483	Cable Assy. - USB Touchscreen (Prior to 451198632).....	1
6	00-444769	Cable Assy. - DC Power.....	1
7	00-444846	Cable Assy. - Printhead Data.....	1
8	00-449864	Cable Assy. USB to Touchscreen Brd. (After 451198632 or has been Updated).....	AR

