



CATALOG OF

REPLACEMENT PARTS



HQC90 CHILLER

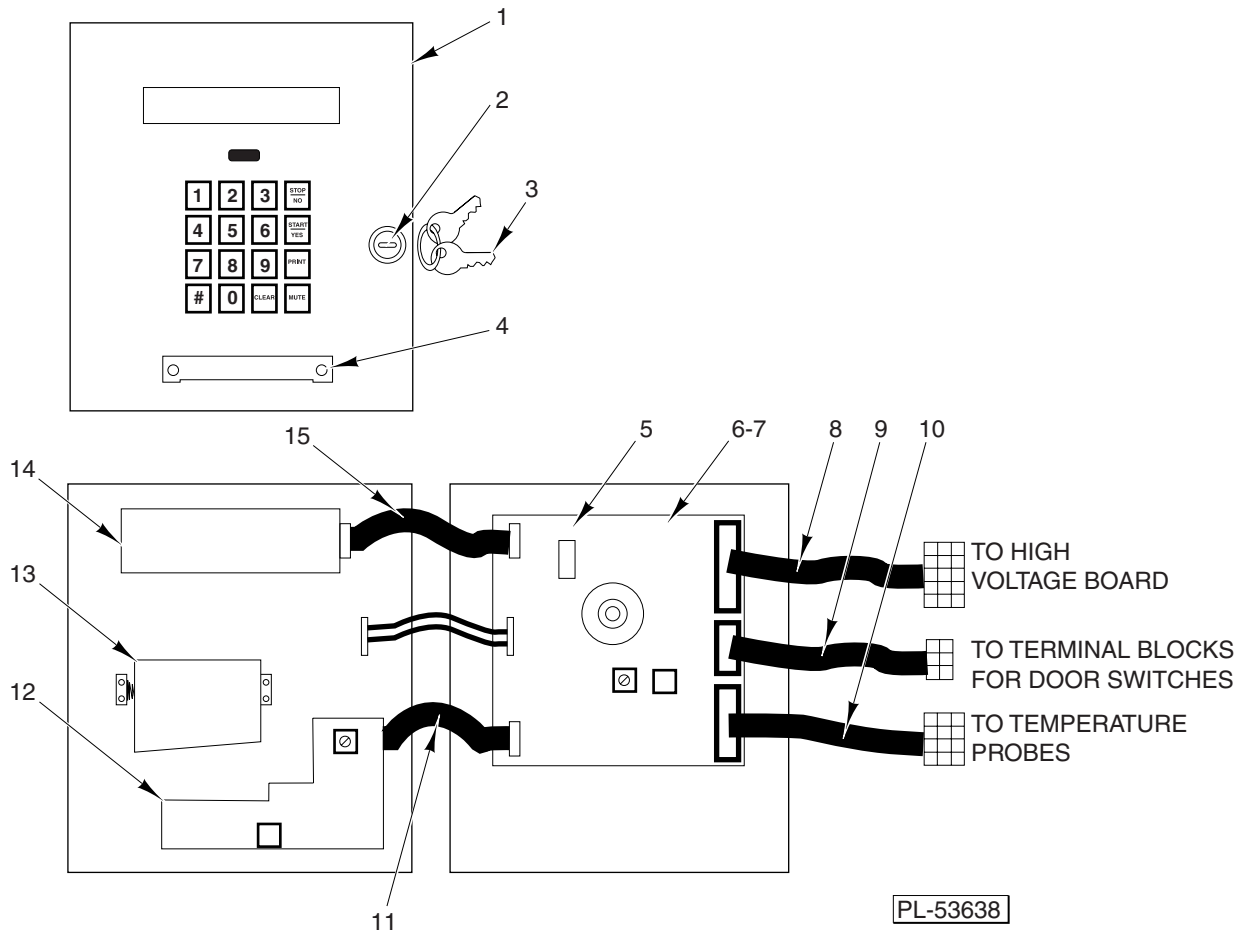
HQC90

ML-124044

ML-124068

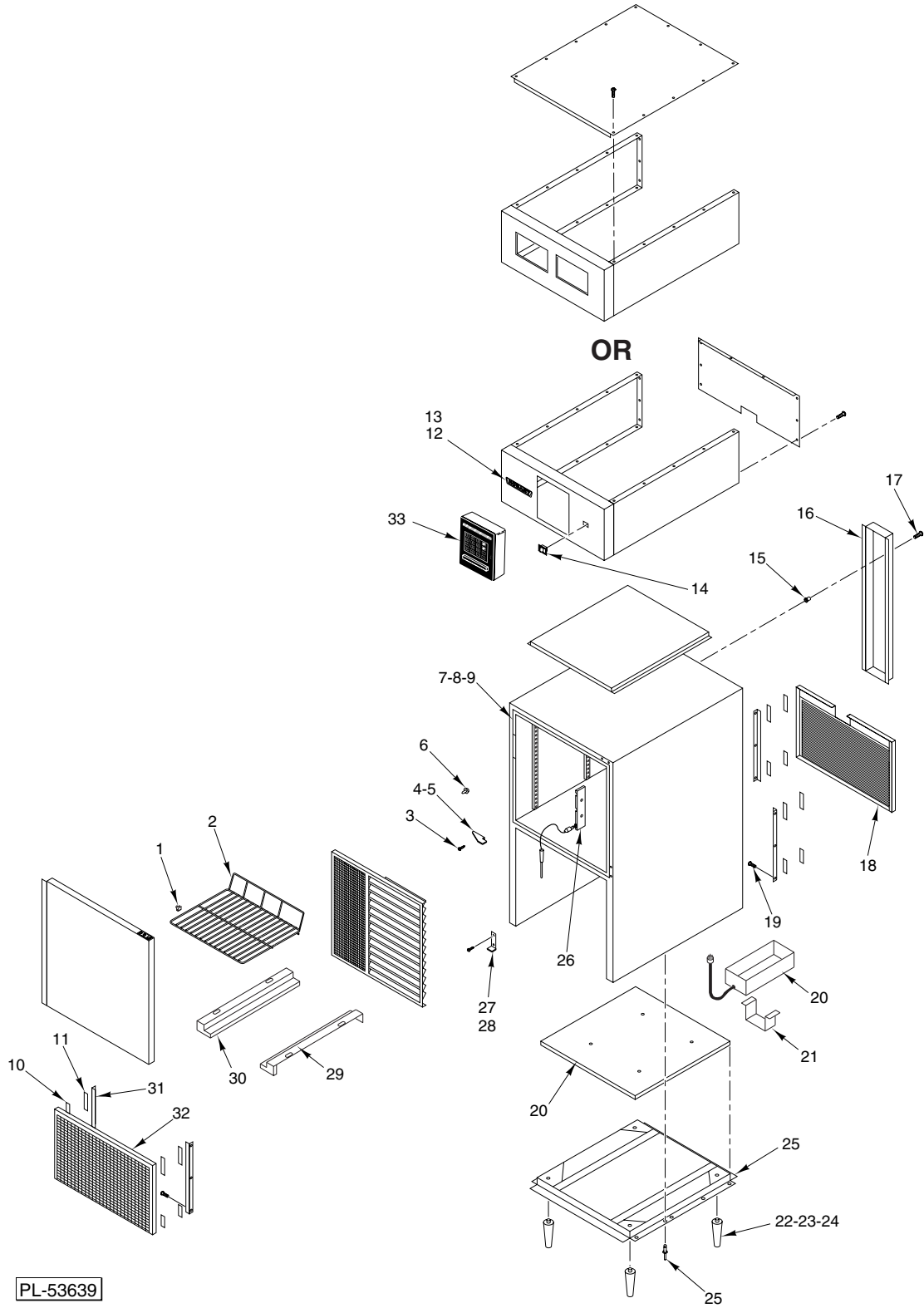
Table of Contents

Page	Description
3	Control Box Assembly
5	Main Cabinet Assembly
6	Door Assembly
7	Pilasters/Food Probes Assembly
9	Internal Section Mechanical Parts Assembly
10	Upper Section Trim Unit (ML-124044)
11	Upper Section Trim Unit (ML-124068)
13	Printer Panel Unit
14	Control Panel Unit
15	Electrical Unit (ML-124068)
17	Electrical Unit (ML-124044)
19	Condensing Unit



**CONTROL BOX ASSEMBLY
(ML-124044)**

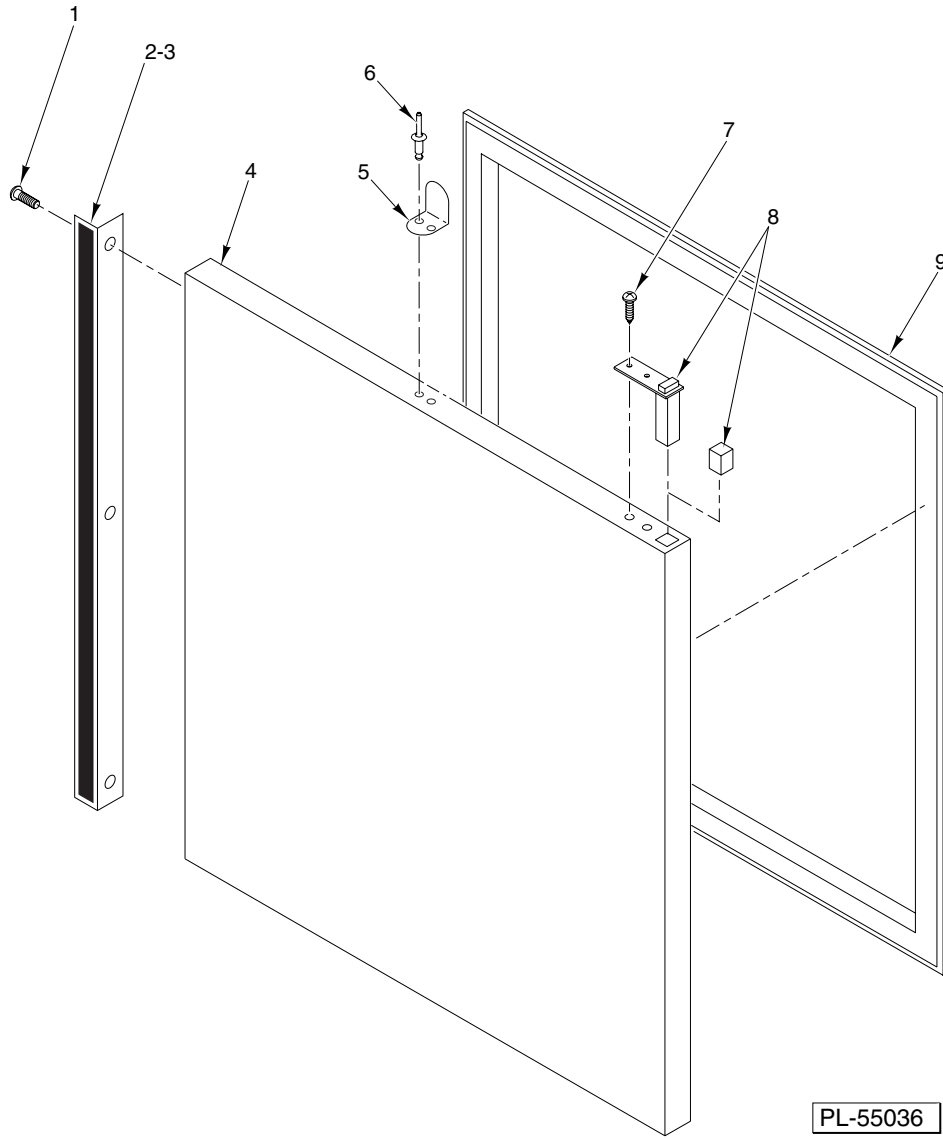
ILLUS.	PART NO.	NAME OF PART	AMT.
PL-53638			
1	00-282053	Keypad – Membrane	1
2	00-630184-00015	Door Lock	1
3	00-630154-00059	Keys – Door (CH 751)	1
4	00-282127	Bar – Paper Tear	1
5	01-010453	Chip – Eprom (Version 2L)	1
6	01-039271	Controller Board Assy. (Version 2L)	1
7	00-282049	Controller Board Assy. (Version 2D)	1
8	00-282066	Cable – Sensor Input	1
9	00-630184-00016	Cable – Door Switches	1
10	00-282057	Cable – Food Probe Coil & Air	1
11	00-282069	Cable – Printer Interface	1
12	00-282050	Printer Assy. (Use With Interface Board)	1
13	00-282051	Paper – Printer	1
14	00-282052	Display	1
15	00-282070	Cable – Display	1
	00-630143-00056	Control Box Assy. (Incls. Items 1 thru 14)	1



MAIN CABINET ASSEMBLY

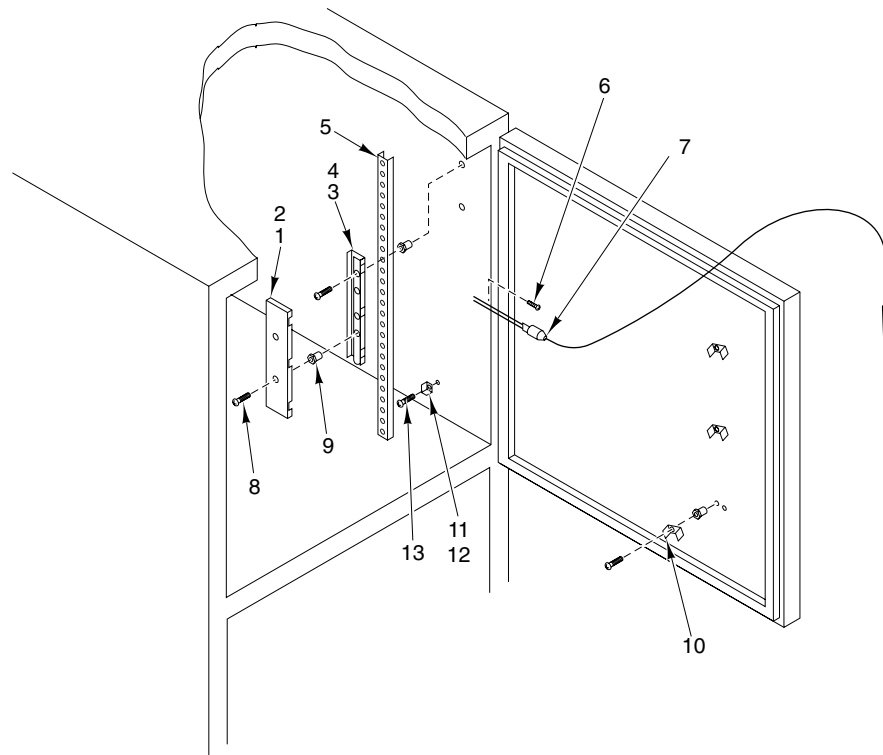
MAIN CABINET ASSEMBLY

ILLUS. PL-53639	PART NO.	NAME OF PART	AMT.
1	00-630152-00084	Shelf Clips	20
2	00-630182-00082	Shelf 3/4 x 26 x 26	5
3	01-012536	Bolt – Door Hinge	4
4	01-030423	Bracket – Right Hinge Upper	1
5	01-030424	Bracket – Left Hinge Upper	1
6	00-630181-00029	Light – Door Switch	1
7	00-630181-00008	Cable – Door Frame Heater (23 OHM x 120")	1
8	00-630183-00054	Thermostat – Door Frame Heater (Type B)	1
9	00-630173-00070	Molding – Snap On (29 ⁵ / ₈ Lg.) (SST)	4
10	01-033626	Velcro Strip (5/8 x 2) (Hooks)	8
11	01-033627	Velcro Strip (5/8 x 2) (Eyes)	8
12	00-206177	Clip – Nameplate (Use with Item 13)	2
13	00-280244	Hobart Logo	1
14	00-630183	Main Switch	1
15	01-008043	Nut – Trick 8-32	6
16	00-889012-00004	Line Cover	10
17	01-012525	Screw – Thread Cutting 8-32 x 1/2 (SST)	6
18	00-889012	Cover – Compressor Back	1
19	00-630161-00058	Screw 8-18 x 1/2 Sq. Hd.	12
20	01-030366	Pan – Condensate (With 3 Ft. Cord) (115 V.)	1
21	00-889025-00001	Support – Condensate Pan	1
22	01-030254	Caster W/O Brakes (Not Shown)	2
23	01-030255	Caster W/Brakes (Not Shown)	2
24	00-630153-00079	Legs – 6" (SST)	2
25	00-630161-00041	Rivets – Pop (3/16" SST)	1
26	00-889008	Food Probes Connection Assy.	1
27	00-630180-00066	Bracket – Right Hinge (Lower)	1
28	00-630180-00067	Bracket – Left Hinge (Lower)	1
29	00-889011-00004	Track – Right	1
30	00-889011-00005	Track – Left	1
31	00-889012-00003	Angle – Bracket	4
32	00-889021-00001	Grill – Front	1
33	00-630143-00056	Control Box Assy. (ML-124044)	1



DOOR ASSEMBLY

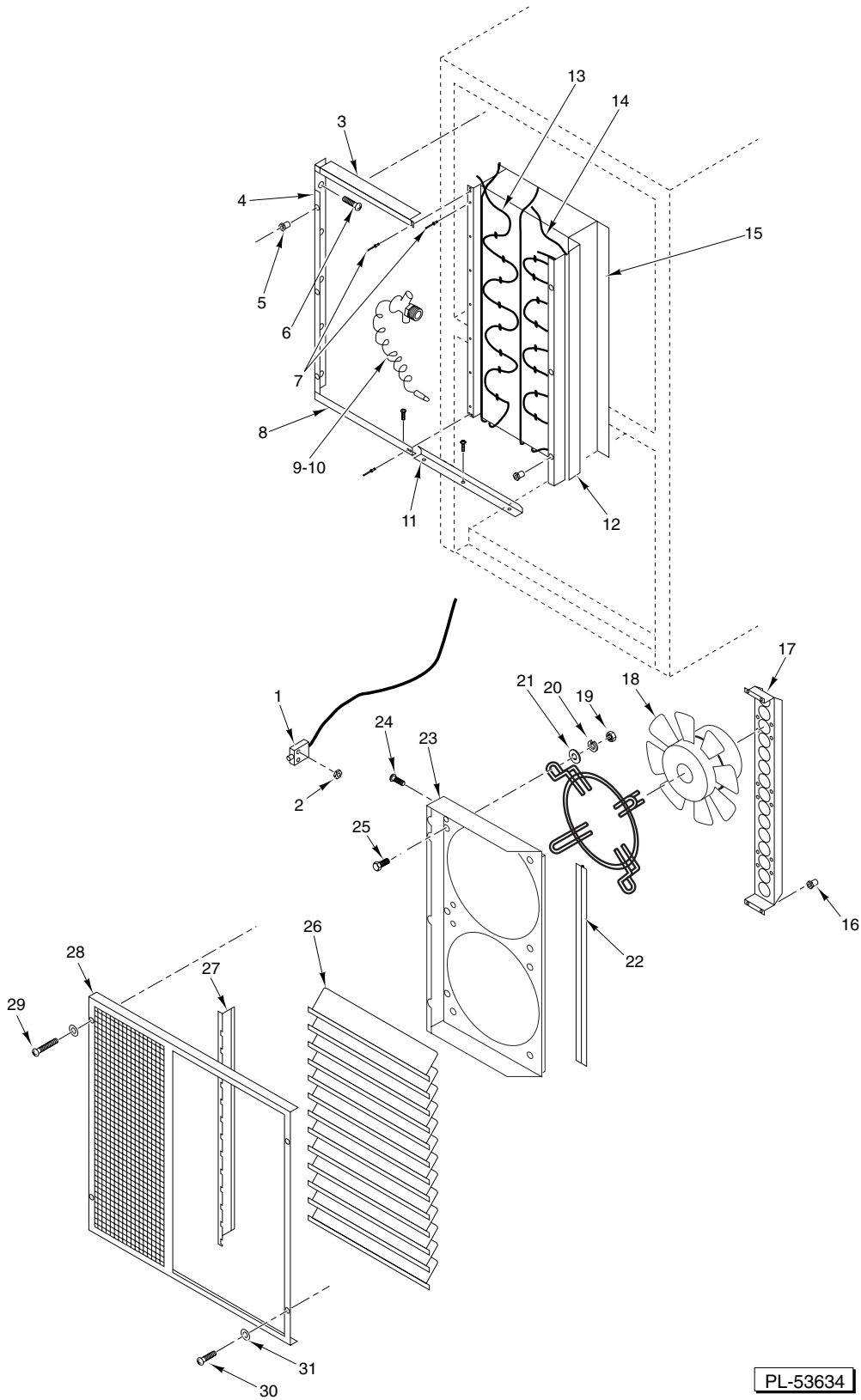
ILLUS.	PART NO.	NAME OF PART	AMT.
PL-55036			
1	01-012525	Screw – Thread Cutting 8-32 x 1/2 (SST)	3
2	00-630152-00085	Handle – Aluminum Extrusion 30 1/2"	1
3	01-023054	Black Laminated Steel 30 1/2"	1
4	00-889004	Door Panel Assy.	1
5	00-630174-00068	Door Switch Activator	1
6	00-630161-00040	Rivet Pop 1/4" (SST)	2
7	00-630162-00029	Screw 10-32 x 1	2
8	00-630180-00065	Hinging Spring System	1
9	00-630153-00043	Door Gasket	1



PL-53640

PILASTERS/FOOD PROBES ASSEMBLY

ILLUS.	PART NO.	NAME OF PART	AMT.
PL-53640			
1	00-889008-00002	Probe Support Cover (ML-124044)	1
2	00-889008-00004	Probe Support Cover (ML-124068)	1
3	00-889008-00001	Probe Support Base (ML-124044)	1
4	00-889008-00005	Probe Support Base (ML-124068)	1
5	00-889013-00001	Pilasters 26" Lg.	4
6	01-012562	Self-Tapping Screw 4 x 1/2 Slotted Pan Hd.	6
7	00-434330	Food Probe (39") (ML-124068)	3
8	01-008043	Nut – Trick 8-32	10
9	01-012585	Mach. Screw 8-32 x 1/2 Phil. Rd. Hd. (SST)	10
10	00-889008-00003	Probe Holder	3
11	00-630153-00071	Left Side Hook	4
12	00-630153-00072	Right Side Hook	4
13	01-012585	Mach. Screw 8-32 x 1/2 Phil. Rd. Hd. (SST)	8
	00-889008-00097	Kit – Food Probe Replacement	AR

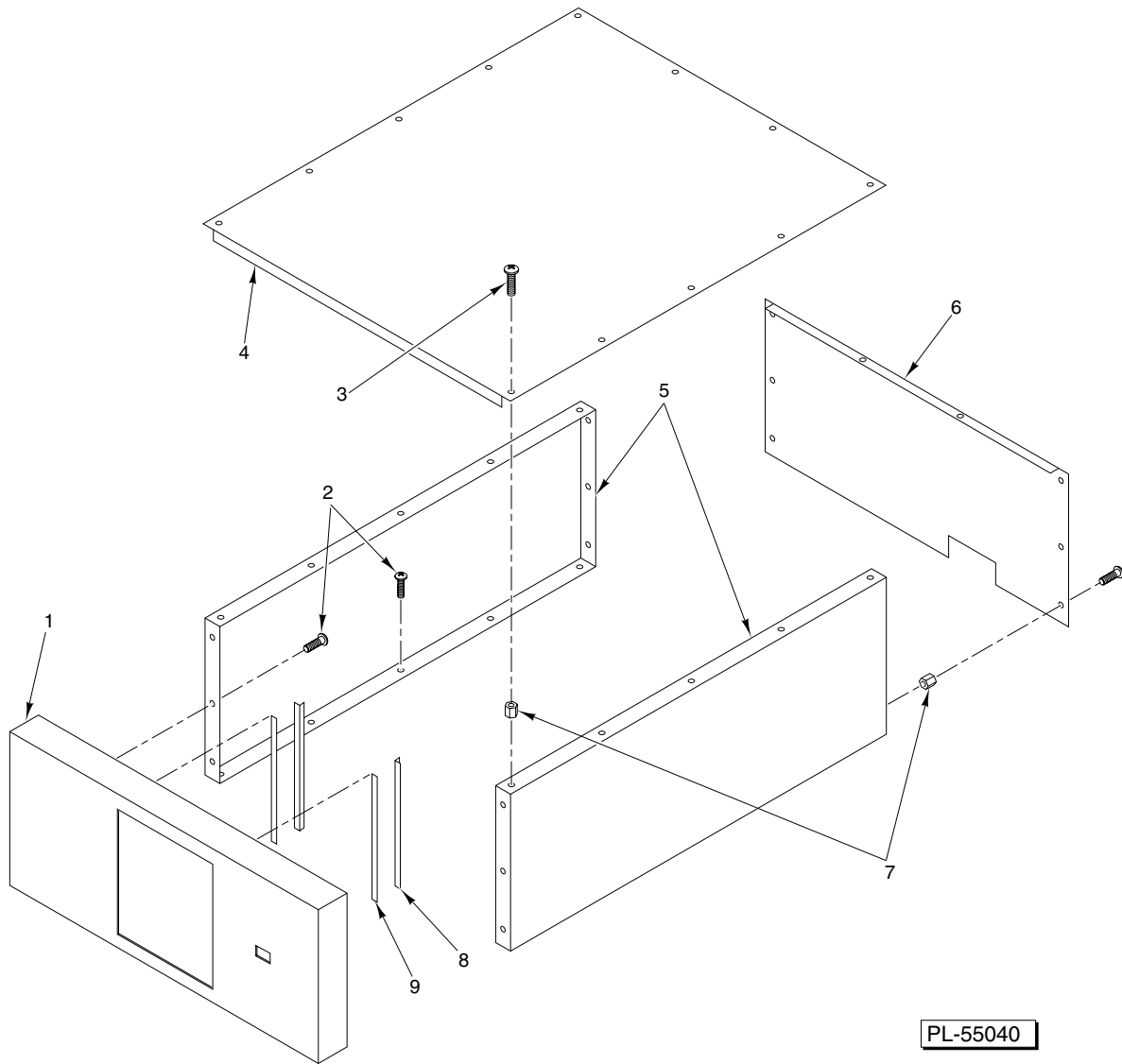


PL-53634

INTERNAL SECTION MECHANICAL PARTS ASSEMBLY

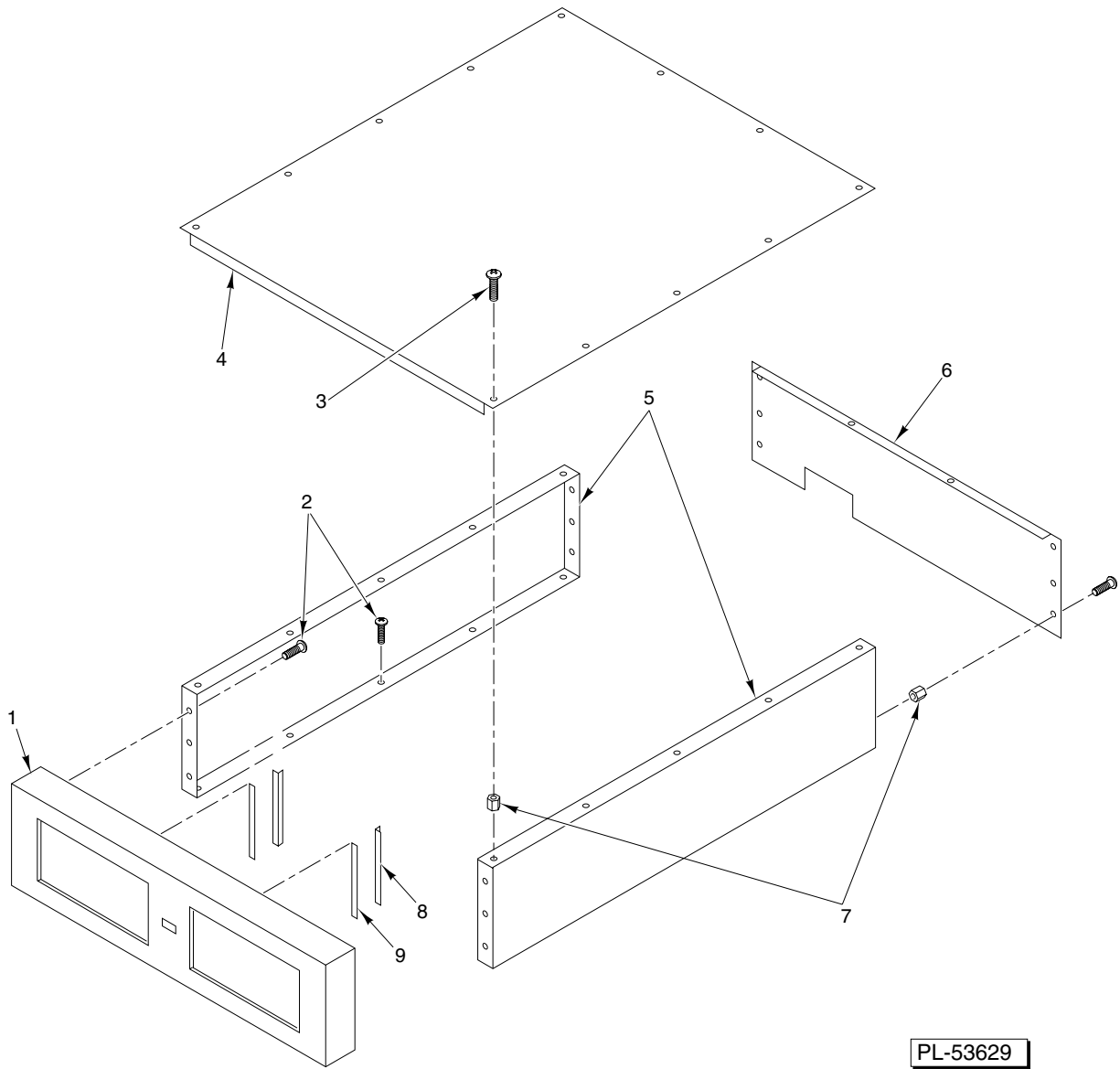
INTERNAL SECTION MECHANICAL PARTS ASSEMBLY

ILLUS. PL-53634	PART NO.	NAME OF PART	AMT.
1	00-630183-00010	Fan Door Switch	1
2	00-630161-00039	Nut 8-32 (SST)	2
3	00-889009-00003	Upper Horizontal Stopper Angle	1
4	00-889009-00002	Left Vertical Stopper Angle	1
5	01-008043	Nut – Trick 8-32	6
6	01-012525	Screw – Thread Cutting 8-32 x 1/2 (SST)	25
7	00-630161-00041	Rivets – Pop (3/16" SST)	11
8	00-889009-00005	Lower Left Horizontal Stopper Angle	12
9	00-630181-00096	Expansion Valve Orifice	1
10	01-011408	Expansion Valve Body	1
11	00-889009-00006	Lower Right Horizontal Stopper Angle	1
12	00-889009-00007	Right Vertical Stopper Angle	1
13	01-016876	Defrost Heater Clip	10
14	01-016888	Defrost Heater	1
15	00-630182-00091	Evaporator Coil	1
16	01-008043	Nut – Trick 8-32	4
17	00-889009-00004	Evaporators Motor Support	3
18	00-630182-00093	Motor – Fan	3
19	00-630161-00033	Nut 3/8-16 Hex (SST)	8
20	01-012583	Lockwasher 3/8 (SST)	8
21	00-630161-00034	Flat Washer 3/8 (SST)	16
22	00-889022-00002	Piano Hinge (24" Lg.) (SST)	1
23	00-889009-00001	Fan Motor Rack	1
24	00-630161-00044	Screw 8-32 x 1	2
25	01-012582	Bolt 3/8-16 x 1 (SST)	8
26	00-889010-00002	Louver	13
27	00-889010-00003	Re-Enforcement Angle	1
28	00-889010-00001	Fan & Coil Protector	1
29	00-889024	Bolt – Wing 8-32 x 3/4	3
30	00-889023	Bolt – Wing 8-32 x 1	3
31	01-012620	Washer 25/64" ID 1" OD (SST)	3
	00-889022	Evaporator Fans Rack Assy. (Incls. Items 22 & 23)	1
	00-889010	Evaporator Protector Assy. (Incls. Items 26, 27, & 28)	1



**UPPER SECTION TRIM UNIT
(ML-124044)**

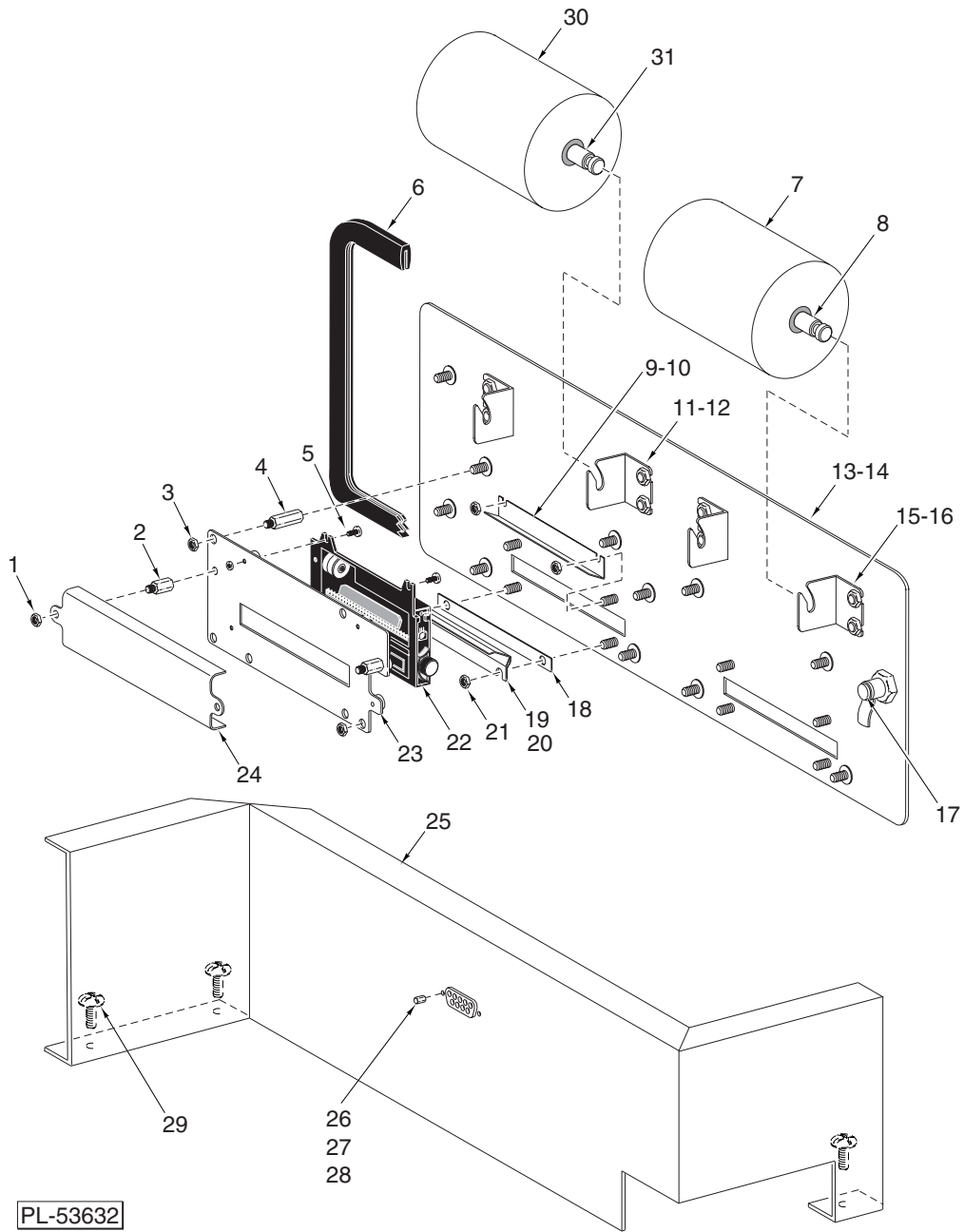
ILLUS.	PART NO.	NAME OF PART	AMT.
PL-55040			
1	00-889007-00001	Front Trim	1
2	00-630161-00058	Screw 8-18 x 1/2 Sq. Hd.	16
3	01-012585	Mach. Screw 8-32 x 1/2 Phil. Rd. Hd. (SST)	18
4	00-889007-00005	Top Trim	1
5	00-889007-00002	Side Trim	2
6	00-889007-00003	Back Trim	1
7	01-008043	Nut - Trick 8-32	18
8	00-889007-00004	Angle - Front Trim	2
9	00-630151-00054	Tape - Double Adhesive 1/2 x 0.050" Thick	2



PL-53629

**UPPER SECTION TRIM UNIT
(ML-124068)**

ILLUS.	PART NO.	NAME OF PART	AMT.
PL-53629			
1	00-889007-00010	Front Trim (Double Printer Trim) (Shown)	1
2	00-630161-00058	Screw 8-18 x 1/2 Sq. Hd.	16
3	01-012585	Mach. Screw 8-32 x 1/2 Phil. Rd. Hd. (SST)	18
4	00-889007-00005	Top Trim	1
5	00-889007-00002	Side Trim	2
6	00-889007-00003	Back Trim	1
7	01-008043	Nut - Trick 8-32	18
8	00-889007-00004	Angle - Front Trim	2
9	00-630151-00054	Tape - Double Adhesive 1/2 x 0.050" Thick	2

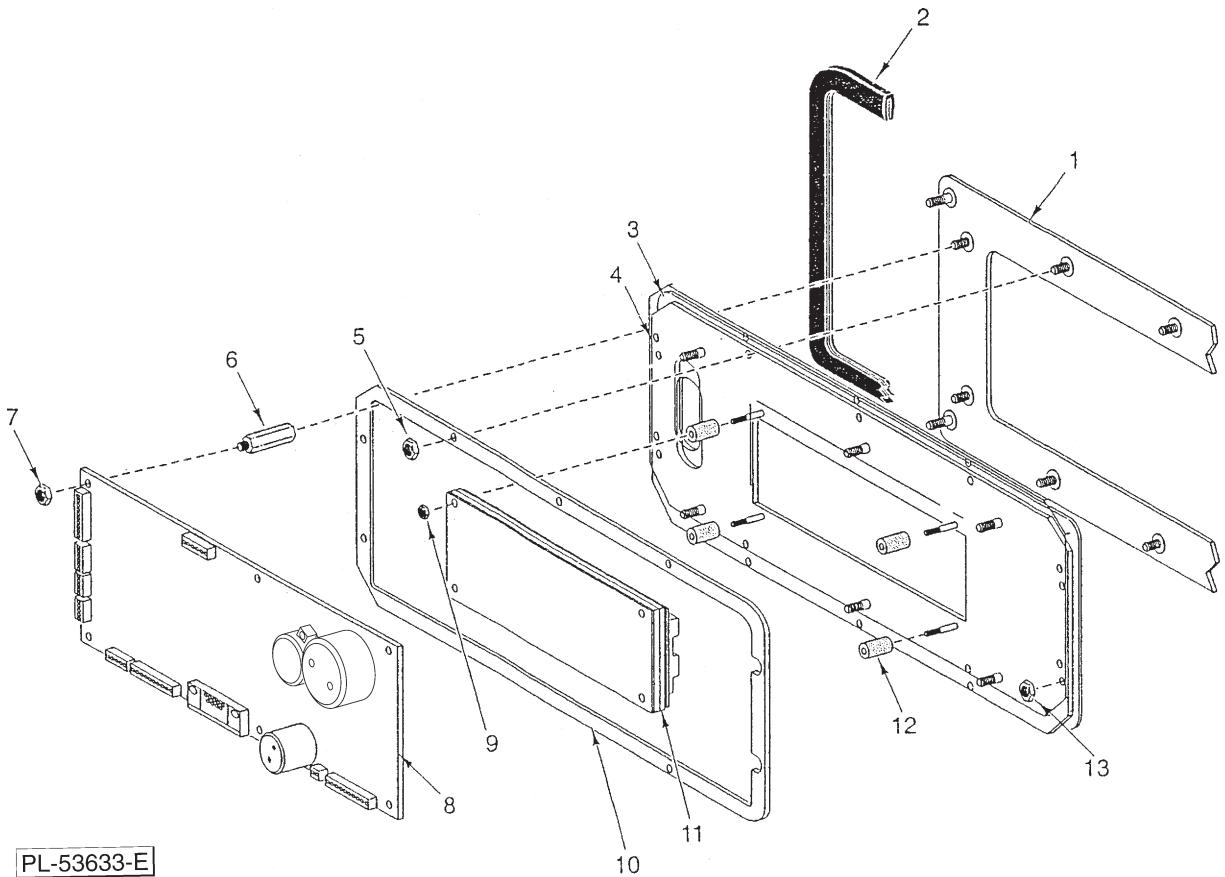


**PRINTER PANEL UNIT
(DOUBLE PRINTER SHOWN) (ML-124068)**

**PRINTER PANEL UNIT
(DOUBLE PRINTER SHOWN) (ML-124068)**

ILLUS. PL-53632	PART NO.	NAME OF PART	AMT.
1	NS-031-50	Stop Nut 6-32 Hex (SST)	2
2	00-434422-00001	Standoff 1/4 Hex (6-32 x 5/8) (Male/Female)	4
3	NS-031-50	Stop Nut 6-32 Hex (SST)	12
4	00-434422-00003	Standoff 1/4 Hex (6-32 x 1 1/2) (Male/Female)	8
5	SC-128-19	Mach. Screw 2-56 x 1/4 Phil. Pan Hd.	2
6	00-434485	Moulding – Panel Edge	1
7	00-434409	Roll – Listing Paper	2
8	00-434401-00002	Spool – Printer Paper	1
9	00-434396	Guide – Paper Feed (Upper)	2
10	NS-031-50	Stop Nut 6-32 Hex (SST)	2
11	00-434400-00001	Retainer – Paper Roll (LH)	2
12	NS-031-50	Stop Nut 6-32 Hex (SST)	4
13	00-434391	Stud Panel – Dual Printer	1
14	00-434399	Stud Panel – Single Printer (Not Shown)	1
15	00-434400-00002	Retainer – Paper Roll (RH)	2
16	NS-031-50	Stop Nut 6-32 Hex (SST)	4
17	00-434492	Fastener – Captive Snap-In Knob	1
18	00-434393	Spacer – Tearbar (Use on Paper Printer Side Only)	2
19	00-434420	Guide & Tearbar Assy. (Use on Paper Printer Side Only)	1
20	00-434392	Guide – Paper Feed (Lower) (Use on Label Printer Side Only)	1
21	NS-031-50	Stop Nut 6-32 Hex (SST)	2
22	00-434361	Printer – Thermal (Serial)	2
23	00-434395	Stud Bracket – Printer	2
24	00-434402	Guide – Printer (Paper)	1
25	00-889040-00005	Cover – Dust	1
26	00-630161-00058	Screw 8-18 x 1/2 Sq. Hd.	AR
27	01-012639	Spacer 4-40 x 3/16 Lg.	2
28	01-012640	Nut 4-40	2
29	01-012641	Lockwasher #4	2
30	00-434408	Roll – Labels	2
31	00-434401-00002	Spool – Printer Paper	1

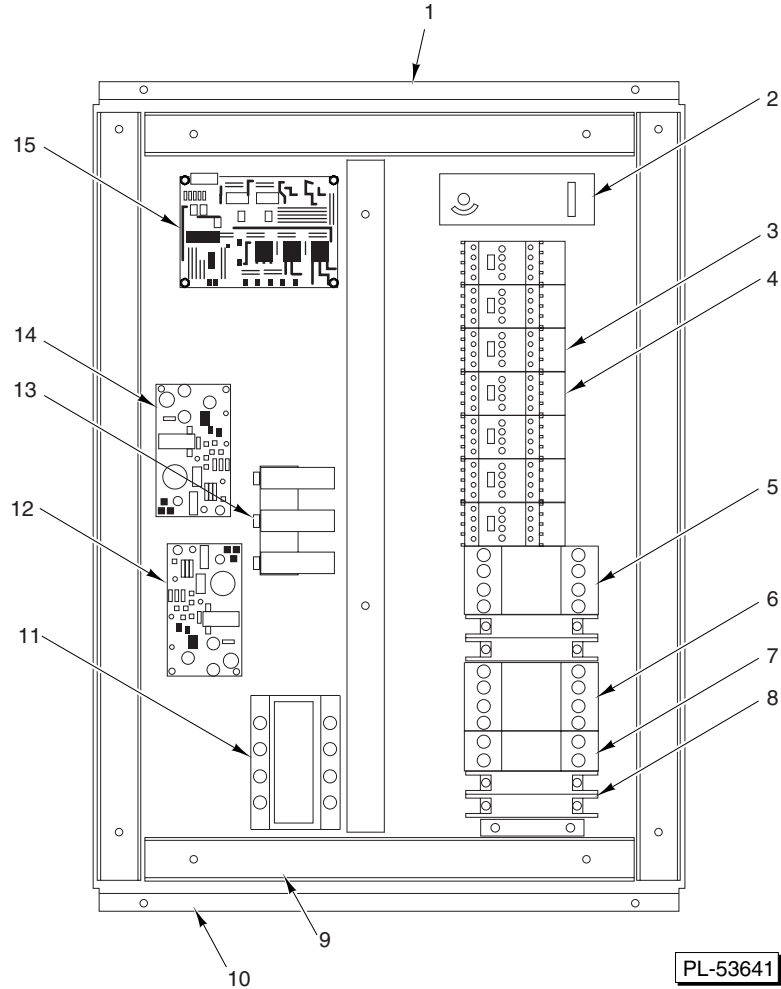
*All Quantities Listed Are For Double Printer Machines Unless
Otherwise Specified.



PL-53633-E

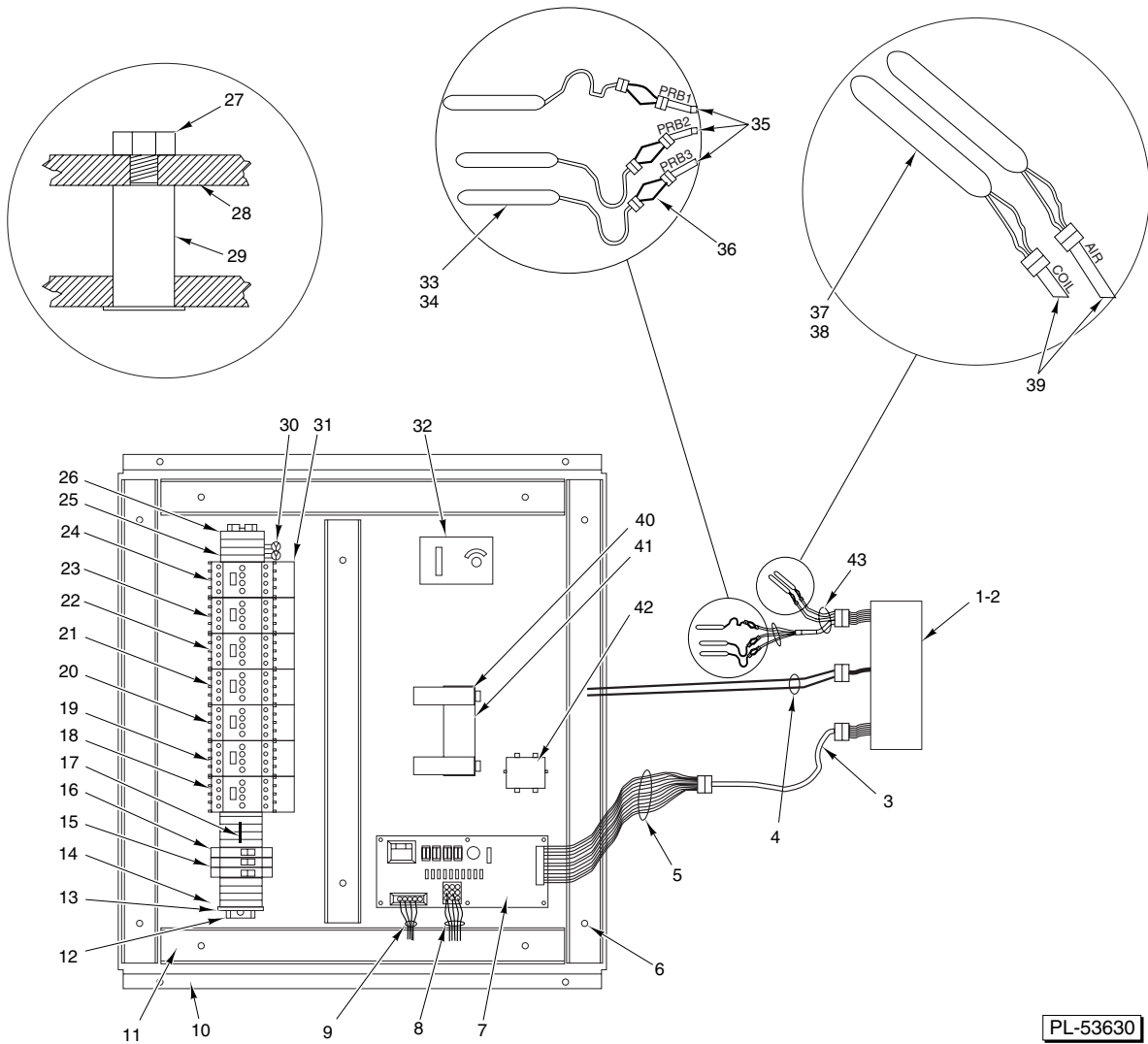
**CONTROL PANEL UNIT
(ML-124068)**

ILLUS.	PART NO.	NAME OF PART	AMT.
	PL-53633-E		
1	00-434487	Trim – Control Panel	2
2	00-434485	Moulding – Panel Edge	1
3	00-434333	Switch – Membrane Keypad	1
4	00-434386	Retainer – Membrane Weldment	1
5	NS-031-50	Stop Nut 6-32 Hex (SST)	6
6	00-434422-00002	Moulding – Panel Edge	6
7	NS-031-50	Stop Nut 6-32 Hex (SST)	6
8	00-434313	Board – Control Assy.	1
9	00-434460	Nut – Nylon 2-56 Hex	4
10	00-434384	Spacer – Membrane Switch	1
11	00-434317	Display – VFD (Serial)	1
12	00-434316	Spacer – Nylon	4
13	NS-047-81	Stop Nut 8-32 Hex	2



**ELECTRICAL UNIT
(ML-124068)**

ILLUS. PL-53641	PART NO.	NAME OF PART	AMT.
1	00-630142-00040	Duct – Wiring 1½ x 3	1
2	01-014622	Control – Safety Control	1
3	00-630141-00069	Connector – Electric M4/6	1
4	00-630142-00001	Terminal Block (#M6/8P)	1
5	01-010500	Contactor (3 Pole) (25 Amp.)	1
6	00-630142-00012	Relay – Hi Limit (OMRON #MK2P-SAC-24-0)	1
7	01-010461	Breaker – Transformer	1
8	01-010431	Breaker – Main (2 Pole) (15 Amp.)	1
9	00-630142-00040	Duct – Wiring	1
10	00-889028-00003	Plate – Electric Mounting	1
11	00-294500-046-1	Transformer Pilot Control (150 VA)	1
12	00-434359-00002	Power Supply (PD-25-7.5)	1
13	00-811201	Capacitor – Run (2UF)	1
14	00-434359-00001	Power Supply (PD-25A)	1
15	00-434319	Board – I/O	1

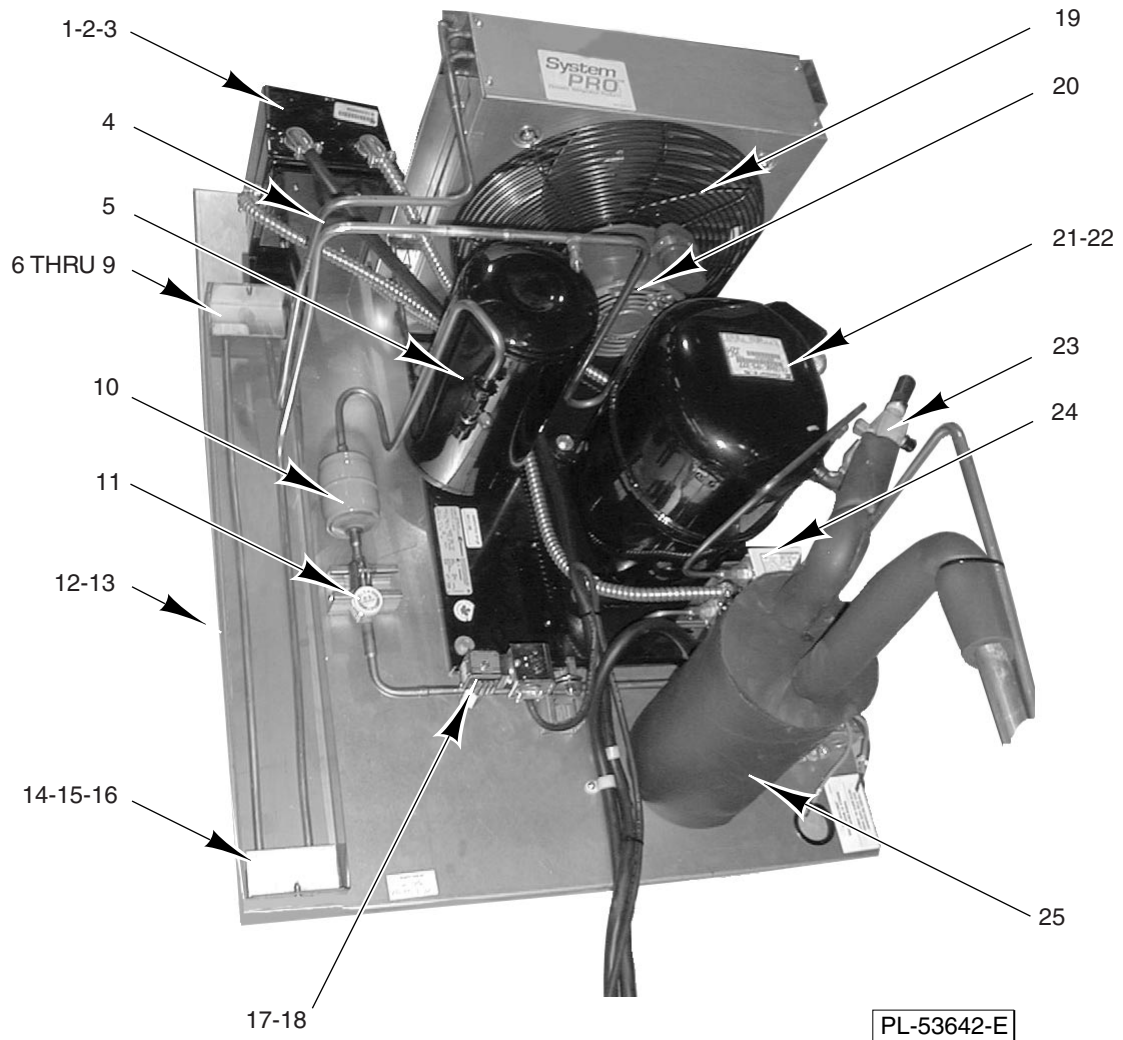


PL-53630

**ELECTRICAL UNIT
(ML-124044)**

**ELECTRICAL UNIT
(ML-124044)**

ILLUS. PL-53630	PART NO.	NAME OF PART	AMT.
1	00-630143-00056	Control Box Assy.	1
2	00-434313	Board – Control Assy.	1
3	01-010415	Cable – Control	1
4	00-630143-00057	Cable – Door Switch	1
5	01-010447	Cable – Internal Control Signal	1
6	00-630161-00058	Screw 8-18 x 1/2 Sq. Hd.	22
7	01-010445	Board – High Voltage	1
8	01-010449	Cable – Output (High Voltage Board)	1
9	01-010448	Cable – Input (High Voltage Board)	1
10	00-889028-00003	Plate – Electric Mounting	1
11	00-630142-00040	Duct – Wiring 1 1/2 x 3	1
12	01-010250	Block – Terminal (8 Pins)	1
13	00-630141-00072	End – Stop (Entrelec Bam)	1
14	00-630141-00070	End – Section (Entrelec Fem-6)	2
15	01-010436	Breaker – Secondary	2
16	00-630183-00008	Breaker – Control Telemecanic	1
17	00-630141-00076	Bar – Jumper (10 Pole)	9
18	00-630141-00013	Contactactor (9 Amp.)	1
19	00-630183-00004	Breaker (Fans)	1
20	00-630141-00010	Starter – Manual	1
21	00-630183-00005	Contactactor (Main) (1 Phase)	1
22	00-630183-00006	Breaker (Compressor) (1 Phase)	AR
23	00-630141-00012	Contactactor (12 Amp.) (1 Phase)	AR
24	00-630183-00003	Breaker (Compressor) (3 Phase)	AR
25	00-630141-00069	Connector (M4/6)	20
26	00-630142-00001	Terminal Block (#M6/8P)	4
27	01-012585	Mach. Screw 8-32 x 1/2 Phil. Rd. Hd. (SST)	6
28	00-889028-00003	Plate – Electric Mounting	1
29	01-008043	Nut – Trick 8-32	6
30	00-630183-00002	Varistor (275 V.)	2
31	00-630141-00073	Block – Telemec. (#LA4-DAIU)	3
32	01-014622	Control – Safety Control	1
33	00-630182-00098	Probe – Product (36")	3
34	00-434330	Probe – Product (39")	3
35	01-010411	Probe – Short Cable	1
36	00-630182-00097	Plug – Product Probe (#431-802)	3
37	00-630182-00099	Probe – Air (#431-095)	2
38	00-434331	Probe – Coil Assy.	1
39	01-010411	Probe – Short Cable	1
40	00-811201	Capacitor	3
41	00-889028-00002	Bracket – Capacitor	1
42	00-630143-00059	Line Filter	1
43	01-010411	Probe – Short Cable	1



CONDENSING UNIT

CONDENSING UNIT

ILLUS.	PART NO.	NAME OF PART	AMT.
	PL-53642-E		
1	00-630184-00014	Capacitor – Start (For Compressor) (440 V.)	1
2	00-630184-00026	Capacitor – Run (30 MFD) (440 V.) (1 Phase)	1
3	00-630184-00027	Relay Copeland (#040-0001-38) (1 Phase)	1
4	01-032455	Tube – Copper (Tin Coated)	1
5	00-630184-00013	Capacitor – Run (40 MFD) (440 V.)	1
6	00-889087-00001	Hot Gas Evaporating Pan	1
7	01-012525	Screw – Thread Cutting 8-32 x 1/2 (SST)	2
8	01-033626	Velcro Strip (5/8 x 2) (Hooks)	2
9	01-033627	Velcro Strip (5/8 x 2) (Eyes)	2
10	00-630181-00063	Drier – Filter (UK-083)	1
11	00-630180-00047	Glass – Moisture Indicator	1
12	00-889087-00002	Angle – Hot Gas Evaporating Tube Holder	1
13	01-008290	Nut – Tricnut 8-32	1
14	00-889087-00002	Angle – Hot Gas Evaporating Tube Holder	2
15	01-008290	Nut – Tricnut 8-32	2
16	01-033629	Tape – Foam (Tube Holder)	4
17	00-630181-00064	Solenoid – Coil (MKC-1-Dual)	1
18	00-630181-00065	Solenoid – Valve (E6S130-3/8)	1
19	00-630184-00030	Blade – Fan (#083-0033-00)	1
20	00-630184-00031	Motor – Fan (#050-0265-00)	1
21	01-039504	Compressor (1 Phase) (CS12K6E-PFV)	1
22	01-039505	Compressor (3 Phase) (CS12K6E-TF5)	1
23	00-630182-00096	Valve – OPR	1
24	00-630184-00029	Switch – Pressure (#085-7014-01)	1
25	00-630182-00095	Accumulator – Suction (RR-3738)	1
	00-630184-00032	Contactactor (#512-2000-05) (3 Phase)	1
	00-630183-00003	Breaker (Compressor) (3 Phase)	1
	00-630183-00006	Breaker (Compressor) (1 Phase)	1
	00-630141-00012	Contactactor (12 Amps.) (1 Phase)	1

