



# CATALOG OF

# REPLACEMENT PARTS

## HQC45 QUICKCHILL AND HQCF45 QUICKCHILL FREEZER



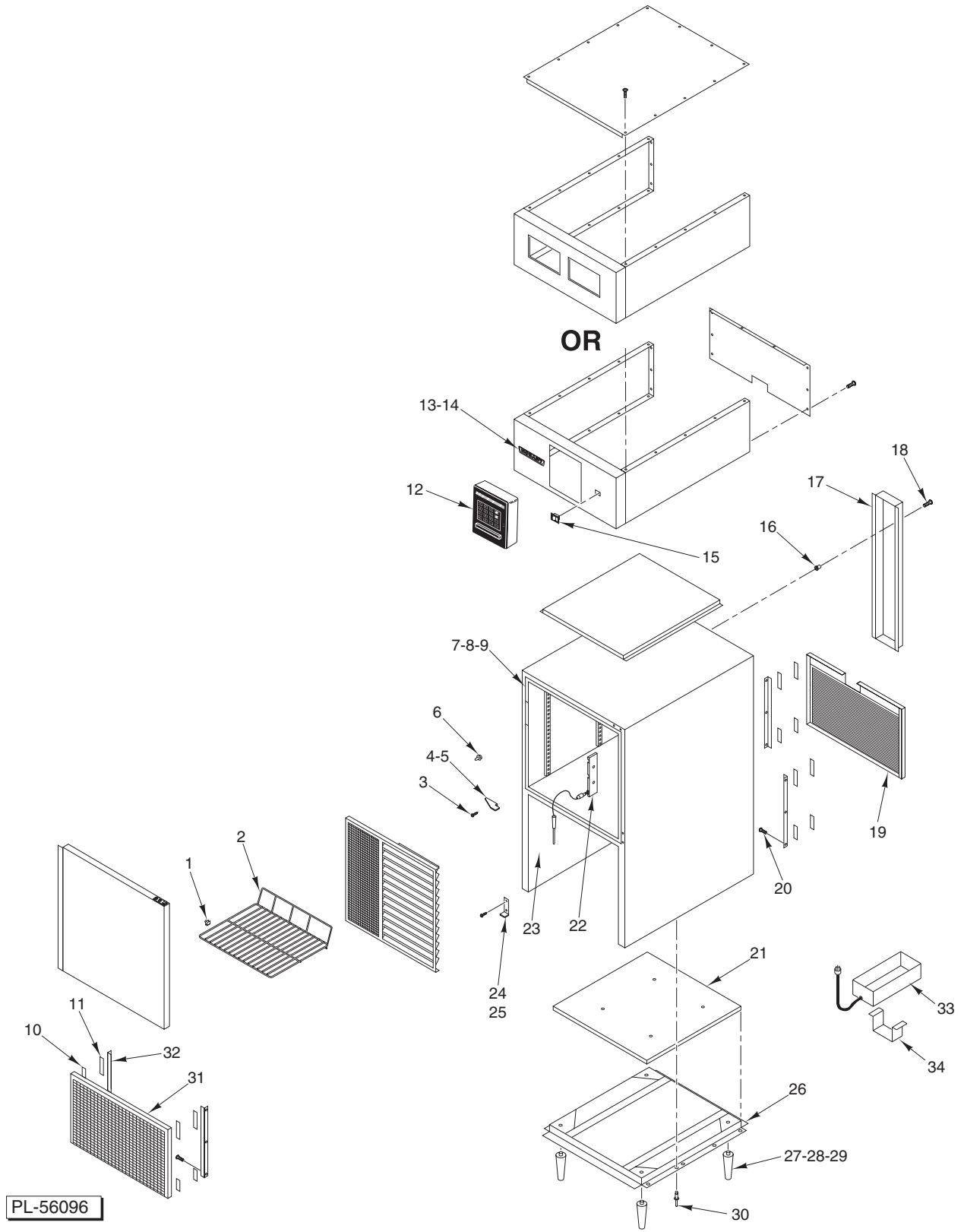
MODEL

HQC45

HQCF45

ML-124059

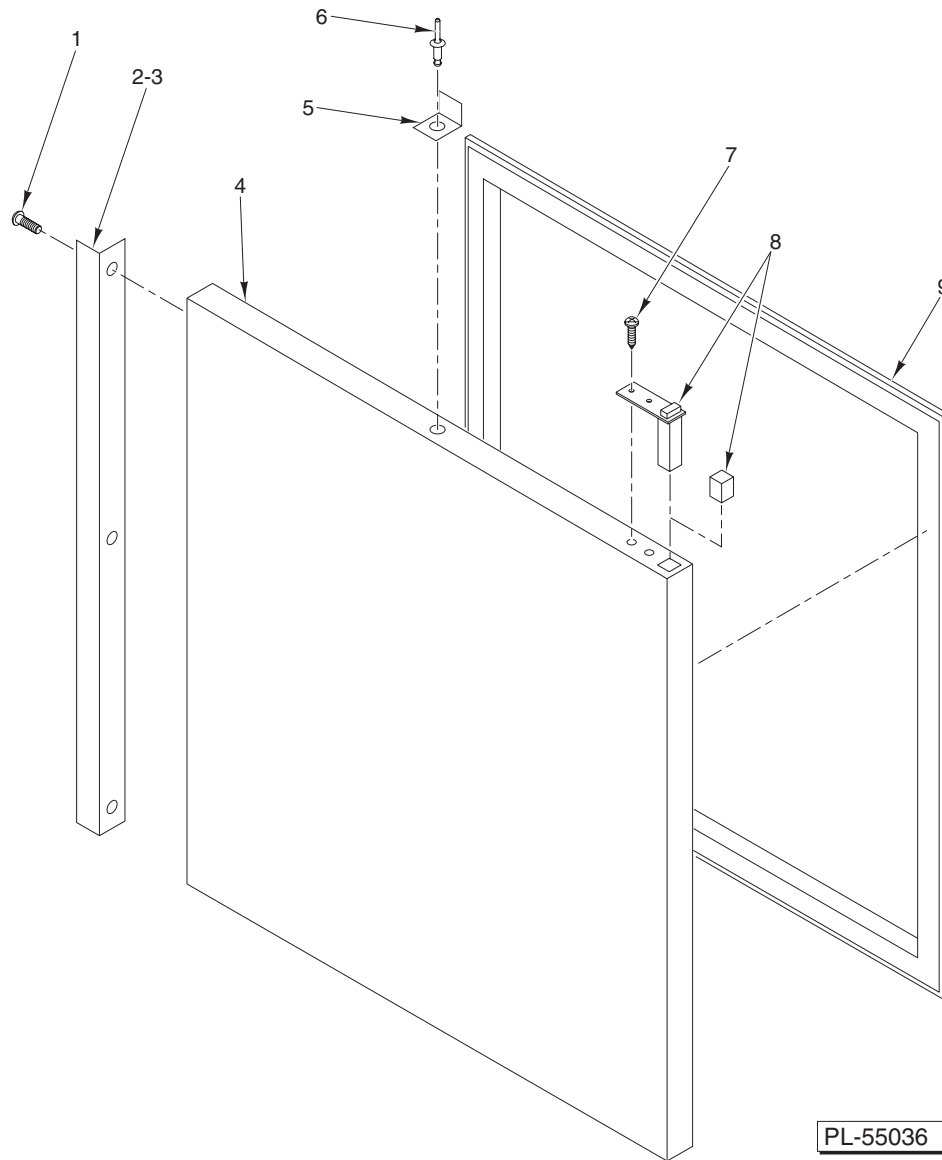
ML-124060



**MAIN CABINET ASSEMBLY**

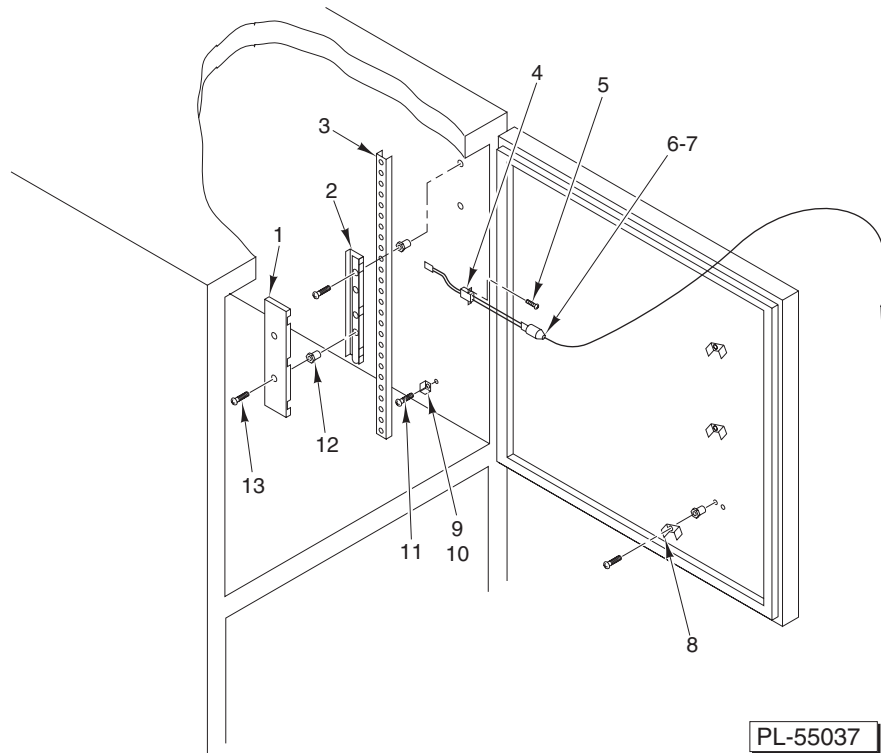
**MAIN CABINET ASSEMBLY**

ILLUS. PL-56096	PART NO.	NAME OF PART	AMT.
1	00-630152-00084	Shelf Clips .....	20
2	01-019997	Shelves .....	5
3	01-012536	Bolt – Door Hinge .....	4
4	01-030423	Bracket – Right Hinge Upper .....	1
5	01-030424	Bracket – Left Hinge Upper .....	1
6	00-630181-00029	Door Switch .....	1
7	00-630181-00008	Cable – 23 OHM x 120 (Door Frame Heater) .....	1
8	00-630183-00054	Thermostat – Door Frame Heater (Type B) .....	1
9	00-630173-00070	Molding – Snap On (29 <sup>5</sup> / <sub>8</sub> Lg.) (SST) .....	4
10	01-033626	Velcro Strip (5/8 x 2) (Hooks) .....	8
11	01-033627	Velcro Strip (5/8 x 2) (Eyes) .....	8
12	00-630143-00056	Control Box Assy. ....	1
13	00-630154-00056	Hobart Logo .....	1
14	00-206177	Clip .....	2
15	00-630183	Main Switch .....	1
16	01-008043	Trick Nut 8-32 .....	6
17	00-889012-00004	Line Cover .....	10
18	01-012525	Cap Screw 8-32 x 1/2 Phil. Rd. Hd. (SST) .....	6
19	00-889062	Grille – Back .....	1
20	00-630161-00058	Screw 8-18 x 1/2 Sq. Hd. ....	12
21	00-889073	Lower Section Mechanical Parts .....	1
22	00-889008	Food Probes Connection Assy. ....	1
23	00-889053	Cabinet Liner Assy. ....	1
24	00-630180-00066	Bracket – Right Hinge Lower .....	1
25	00-630180-00067	Bracket – Left Hinge Lower .....	1
26	00-889056	Base – Metal Assy. ....	1
27	01-030254	Caster W/O Brakes (Not Shown) .....	2
28	01-030255	Caster W/Brakes (Not Shown) .....	2
29	00-630153-00079	Legs (6 In.) (SST) .....	2
30	00-630161-00041	Rivets – Pop (3/16) (SST) .....	1
31	00-889071-00001	Grille – Front .....	1
32	00-889062-00003	Angle Bracket .....	4
33	01-030366	Pan – Condensate (With 3 Ft. Cord) (115 V.) .....	1
34	00-889025-00001	Support – Condensate .....	1



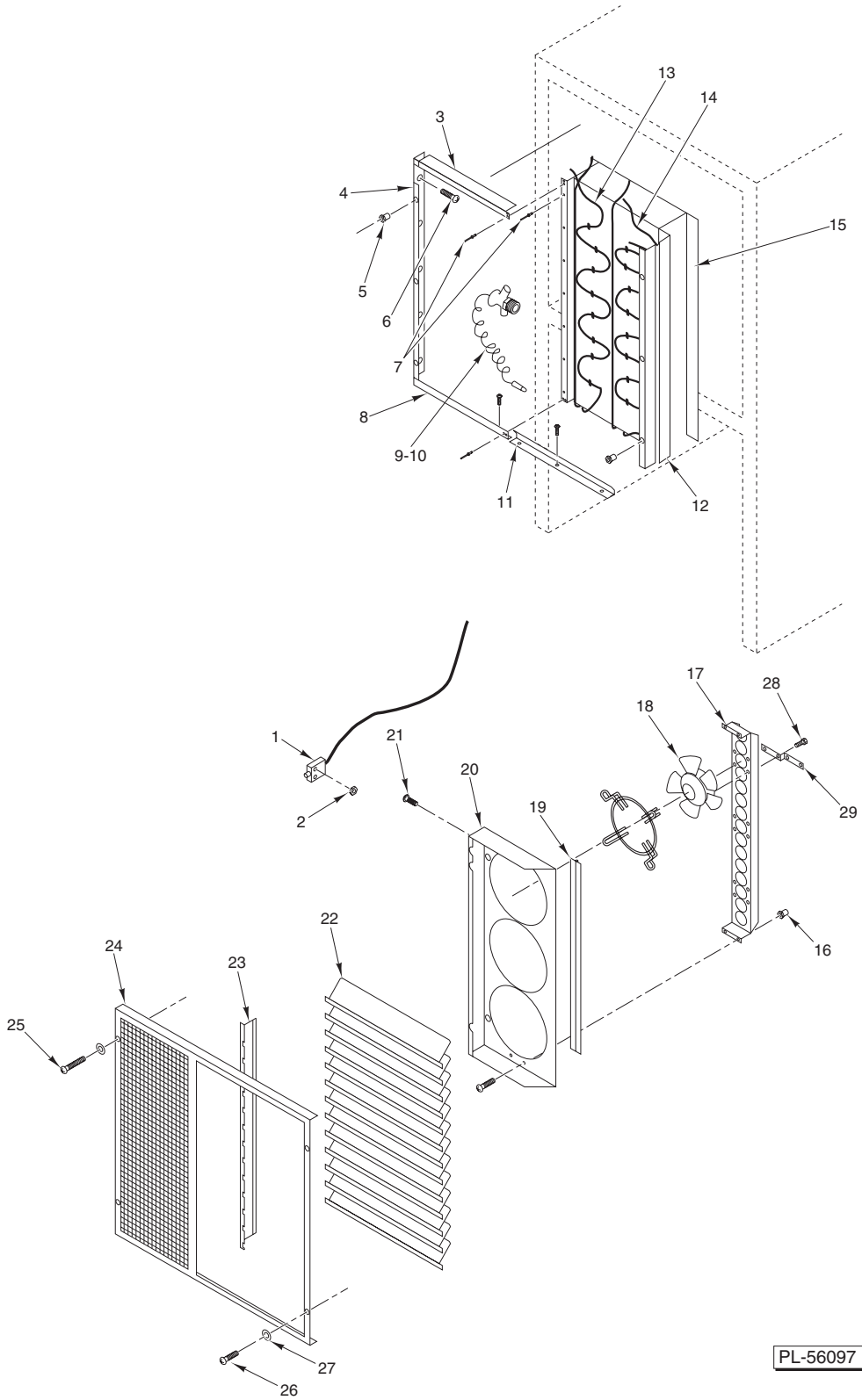
**DOOR ASSEMBLY**

ILLUS.	PART NO.	NAME OF PART	AMT.
PL-55036			
1	01-012525	Cap Screw 8-32 x 1/2 Phil. Rd. Hd. (SST)	3
2	00-630152-00085	Handle – Aluminum Extrusion 30 1/2	1
3	01-023054	Black Laminated Steel 30 1/2	1
4	00-889004	Door Panel Assy.	1
5	00-630174-00068	Door Switch Activator	1
6	00-630161-00040	Rivet – Pop (1/4) (SST)	2
7	00-630162-00029	Screw 10-32 x 1	2
8	00-630180-00065	Hinging Spring System	1
9	00-630153-00043	Door Gasket	1



**PILASTERS/FOOD PROBES ASSEMBLY**

ILLUS.	PART NO.	NAME OF PART	AMT.
PL-55037			
1	00-889008-00002	Probe Support Cover .....	1
2	00-889008-00001	Probe Support Base .....	1
3	00-889013-00001	Pilasters 26 Lg. (Previous Construction) .....	4
4	00-630182-00097	Probe Female Connector (Previous Construction) .....	3
5	01-012562	Self-Tapping Screw 4 x 1/4 Slotted Pan Hd. ....	6
6	00-630182-00098	Food Probe 36 Lg. (Previous Construction) .....	3
7	00-434330	Food Probe 39 Lg. ....	1
8	00-889008-00003	Probe Holder .....	3
9	00-630153-00071	Left Side Hook .....	4
10	00-630153-00072	Right Side Hook .....	4
11	01-012585	Cap Screw 8-32 x 1/2 Phil. Rd. Hd. (SST) .....	8
12	01-008043	Nut – Trick 8-32 .....	10
13	01-012585	Cap Screw 8-32 x 1/2 Phil. Rd. Hd. (SST) .....	10
	00-889008-00097	Probe Retrofit Kit .....	1

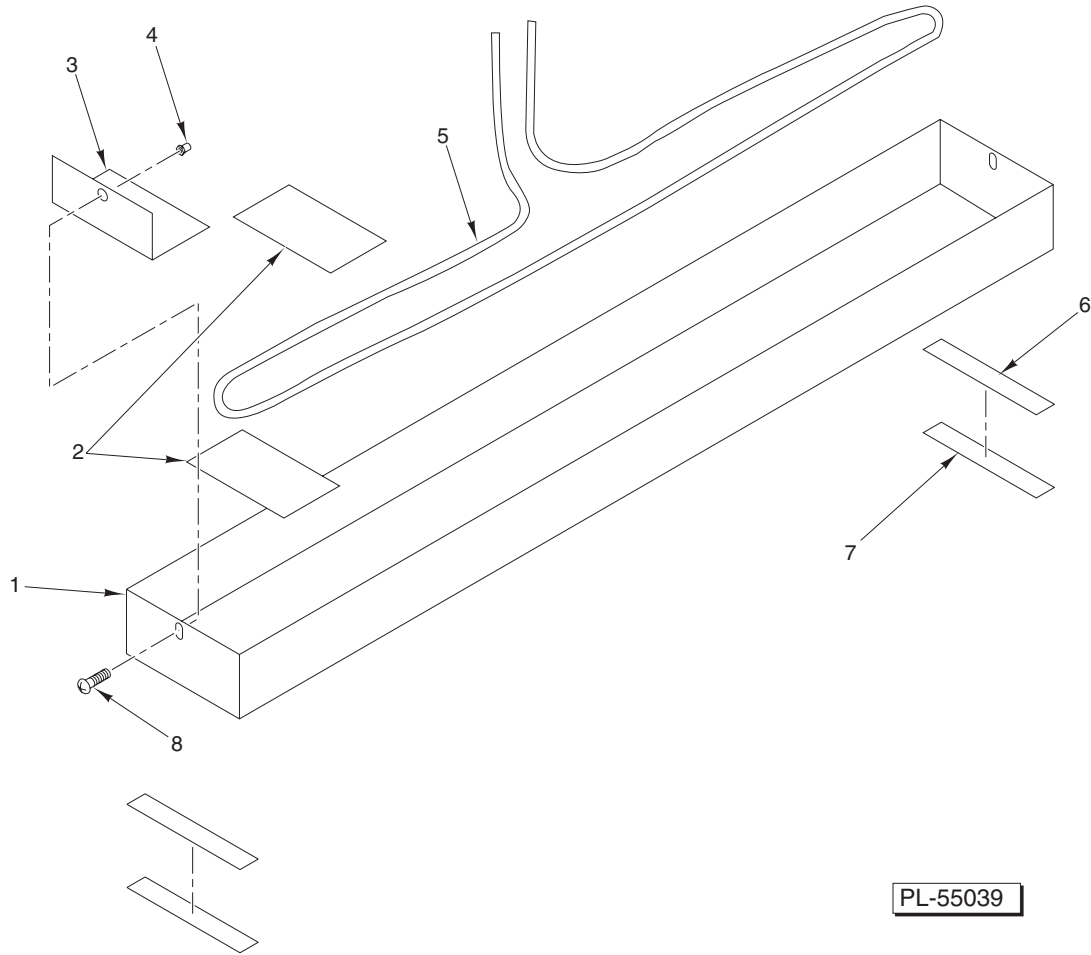


PL-56097

**INTERNAL SECTION MECHANICAL PARTS ASSEMBLY**

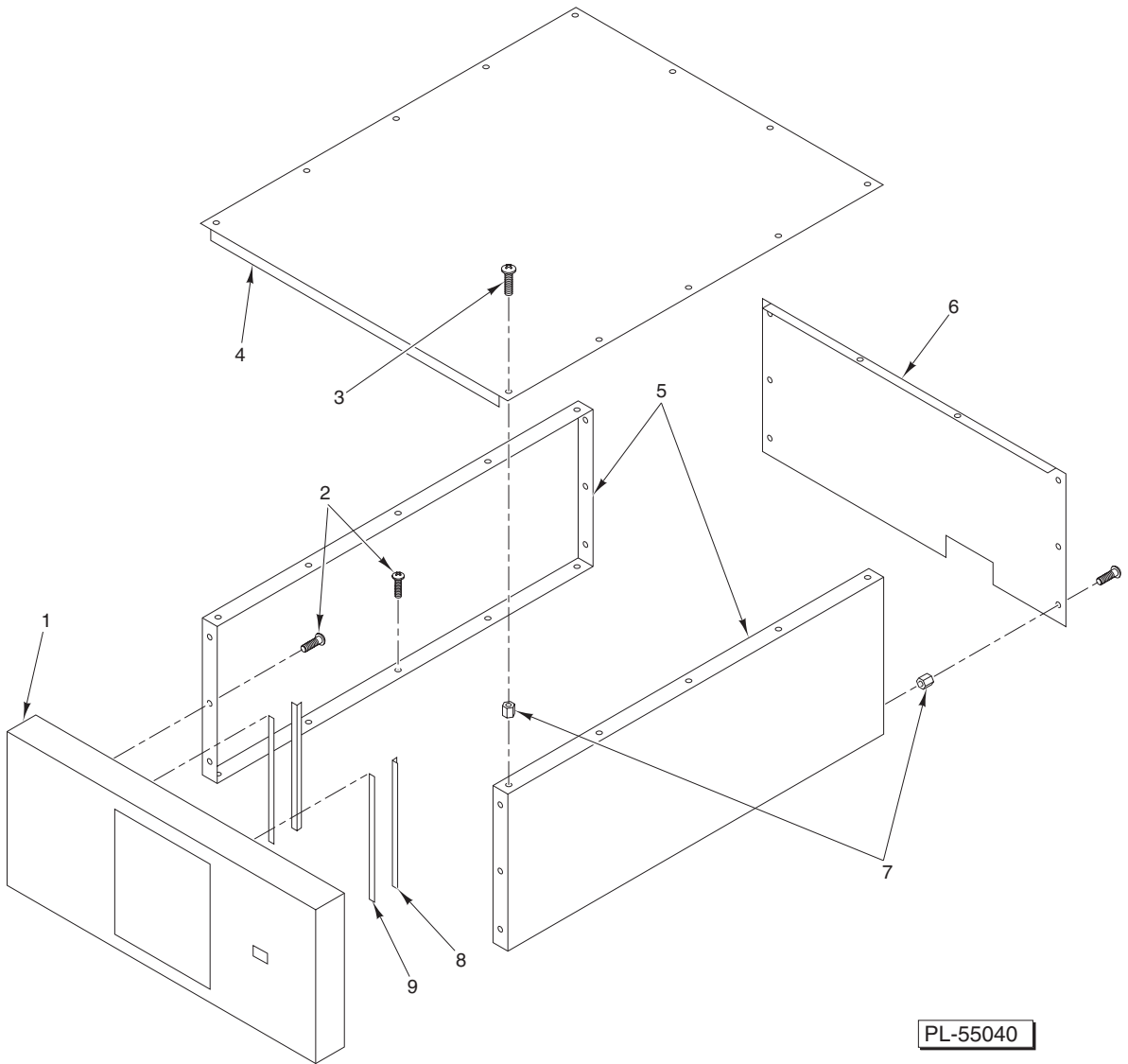
**INTERNAL SECTION MECHANICAL PARTS ASSEMBLY**

ILLUS. PL-56097	PART NO.	NAME OF PART	AMT.
1	00-630183-00010	Fan Door Switch .....	1
2	00-630161-00039	Nut 8-32 Hex (SST) .....	2
3	00-889079-00003	Upper Horizontal Stopper Angle .....	1
4	00-889079-00002	Left Vertical Stopper Angle .....	1
5	01-008293	Trick Nut <sup>5</sup> / <sub>16</sub> -18 .....	4
6	01-012525	Cap Screw 8-32 x 1/2 Phil. Rd. Hd. (SST) .....	25
7	00-630161-00041	Rivets – Pop ( <sup>3</sup> / <sub>16</sub> ) (SST) .....	11
8	00-889079-00005	Lower Left Horizontal Stopper Angle .....	12
9	00-630182-00002	Expansion Valve Orifice .....	1
10	00-630181-00058	Expansion Valve Body .....	1
11	00-889079-00006	Lower Right Horizontal Stopper Angle .....	1
12	00-889079-00007	Right Vertical Stopper Angle .....	1
13	01-016876	Defrost Heater Clip .....	20
14	01-016836	Defrost Heater .....	2
15	01-034684	Evaporator Coil .....	1
16	01-008043	Trick Nut 8-32 .....	4
17	00-889079-00004	Evaporators Motor Support .....	1
18	00-811200	Motor – Fan .....	3
19	00-889022-00002	Piano Hinge (24 Lg.) (SST) .....	1
20	00-889079-00001	Fan Motor Rack .....	1
21	00-630161-00044	Screw 8-32 x 1 .....	2
22	00-889086-00002	Louver .....	13
23	00-889010-00003	Re-Reinforcement Angle .....	1
24	00-889086-00001	Fan And Coil Protector .....	1
25	01-012619	Screw <sup>5</sup> / <sub>16</sub> -18 x 3 Hex Hd. (SST) .....	2
26	00-630161-00030	Bolt <sup>5</sup> / <sub>16</sub> -18 x <sup>3</sup> / <sub>4</sub> Hex Hd. .....	2
27	01-012620	Washer .....	4
28	01-012636	Screw 4 mm x 8 mm .....	12
29	00-889079-00008	Wire Holder .....	1
	00-889088	Evaporator Fans Rack Assy. (Incls. Items 19 & 20) .....	1
	00-889086	Evaporator Protector Assy. (Incls. Items 22, 23, & 24) .....	1



**HOT GAS EVAPORATING PAN ASSEMBLY**

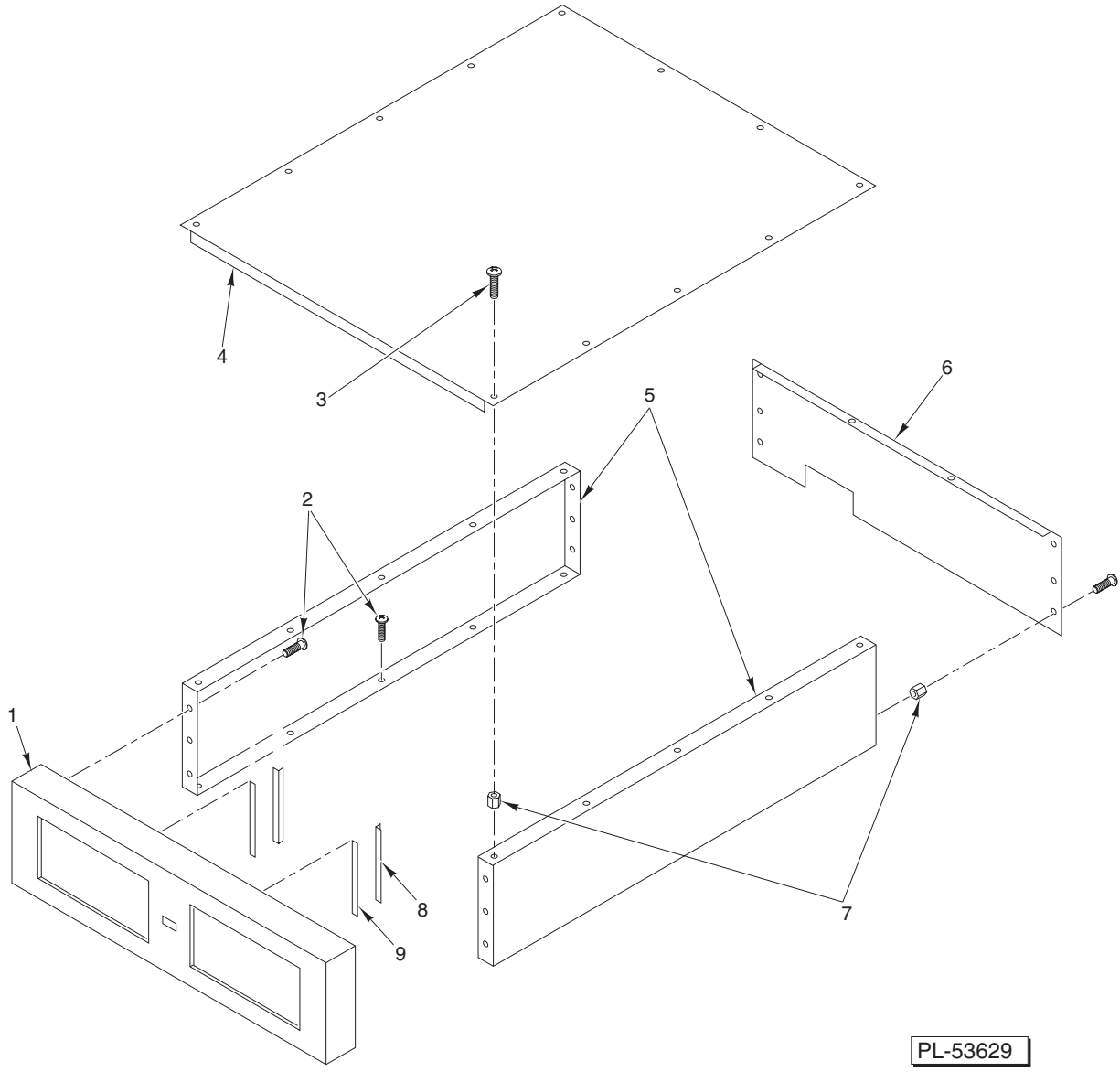
ILLUS.	PART NO.	NAME OF PART	AMT.
PL-55039			
1	00-889087-00001	Hot Gas Evaporating Pan .....	1
2	01-033629	Tape – Foam .....	4
3	00-889087-00002	Hot Gas Evaporating Tube Holder .....	2
4	01-008043	Trick Nut 8-32 .....	2
5	01-032455	Tube – Copper (Tin-Coated) .....	1
6	01-033627	Velcro Strip (5/8 x 2) (Eyes) .....	2
7	01-033626	Velcro Strip (5/8 x 2) (Hooks) .....	2
8	01-012525	Cap Screw 8-32 x 1/2 Phil. Rd. Hd. (SST) .....	2



PL-55040

**UPPER SECTION ASSEMBLY**

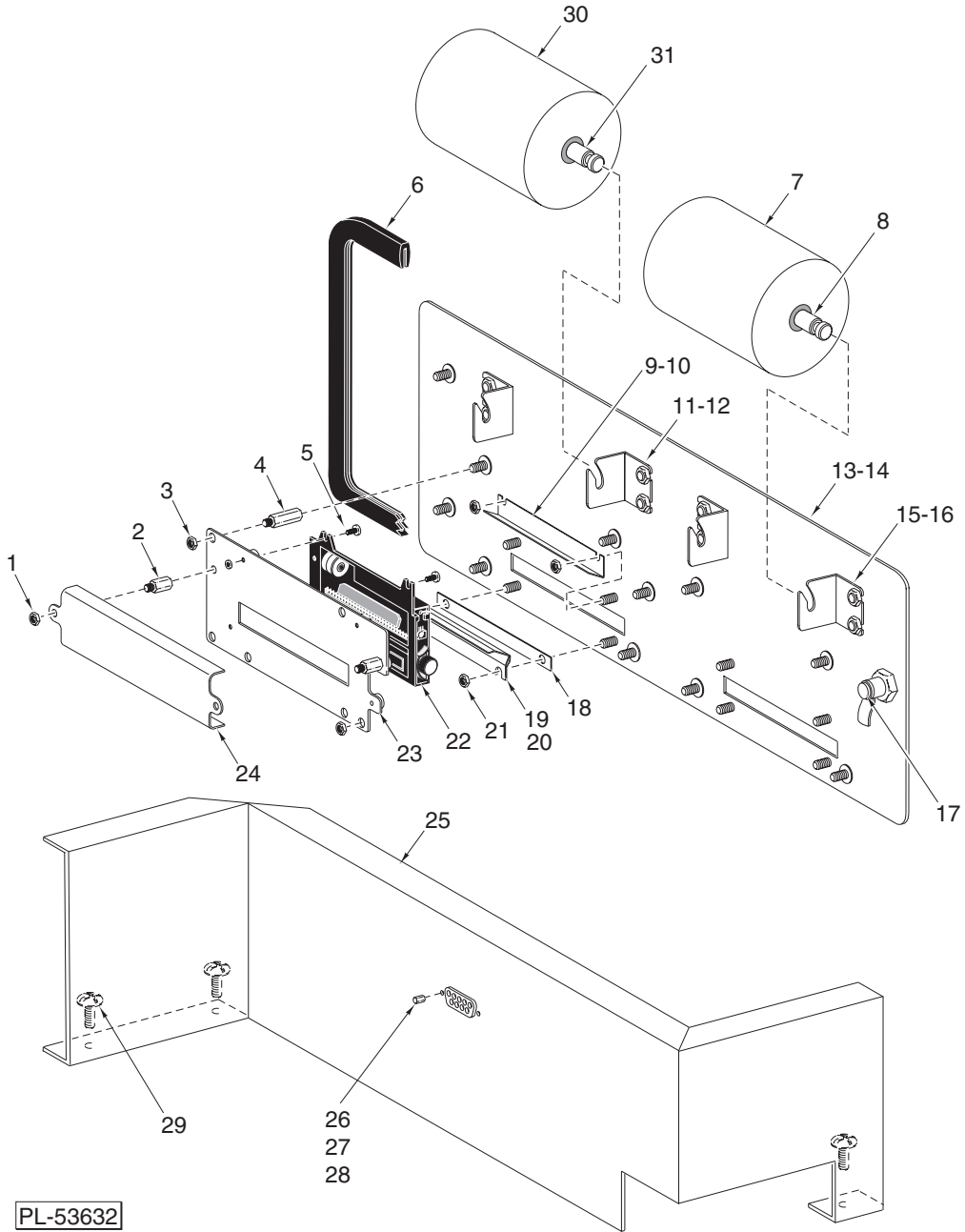
ILLUS.	PART NO.	NAME OF PART	AMT.
PL-55040			
1	00-889007-00001	Front Trim .....	1
2	00-630161-00058	Screw 8-18 x 1/2 Sq. Hd. ....	16
3	01-012585	Cap Screw 8-32 x 1/2 Phil. Rd. Hd. (SST) .....	18
4	00-889057-00005	Top Trim .....	1
5	00-889057-00002	Side Trim .....	2
6	00-889057-00003	Back Trim .....	1
7	01-008043	Trick Nut 8-32 .....	18
8	00-889007-00004	Angle – Front Trim .....	2
9	00-630151-00054	Tape – Double Adhesive (1/2 x 0.050 Thk.) .....	2



**UPPER SECTION TRIM UNIT**

**UPPER SECTION TRIM UNIT**

ILLUS.	PART NO.	NAME OF PART	AMT.
PL-53629			
1	00-889007-00010	Front Trim (Double Printer Trim) (Shown) .....	1
2	00-630161-00058	Screw 8-18 x 1/2 Sq. Hd. ....	16
3	01-012585	Mach. Screw 8-32 x 1/2 Phil. Rd. Hd. (SST) .....	18
4	00-889007-00005	Top Trim .....	1
5	00-889007-00011	Side Trim .....	2
6	00-889007-00003	Back Trim .....	1
7	01-008043	Nut – Trick 8-32 .....	18
8	00-889007-00004	Angle – Front Trim .....	2
9	00-630151-00054	Tape – Double Adhesive 1/2 x 0.050 Thick .....	2

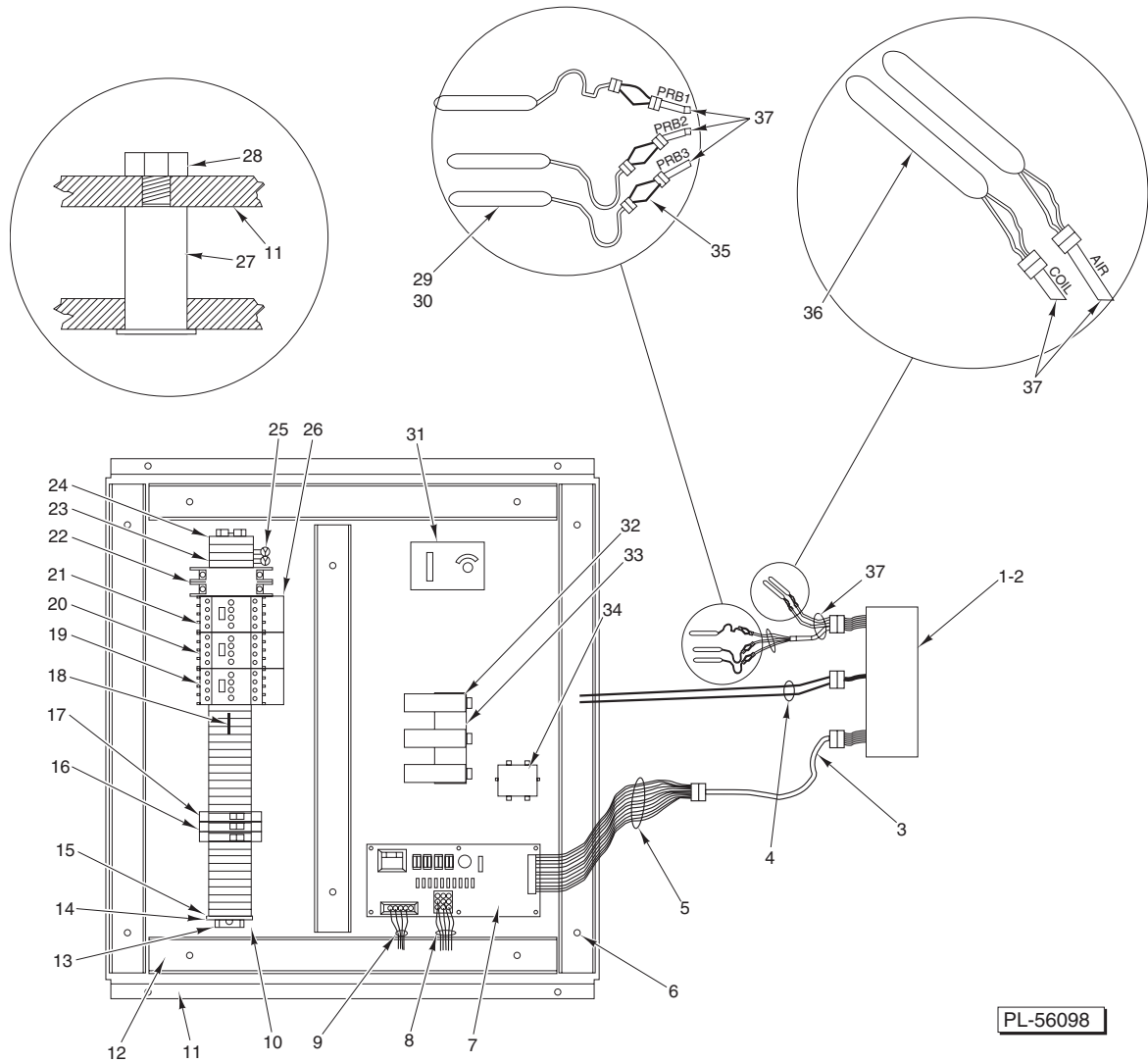


**PRINTER PANEL UNIT  
(DOUBLE PRINTER SHOWN)**

**PRINTER PANEL UNIT  
(DOUBLE PRINTER SHOWN)**

ILLUS.	PART NO.	NAME OF PART	AMT.
PL-53632			
1	NS-031-50	Stop Nut 6-32 Hex (SST) .....	2
2	00-434422-00001	Standoff 1/4 Hex (6-32 x 5/8) (Male/Female) .....	4
3	NS-031-50	Stop Nut 6-32 Hex (SST) .....	12
4	00-434422-00003	Standoff 1/4 Hex (6-32 x 1 1/2) (Male/Female) .....	8
5	SC-128-19	Mach. Screw 2-56 x 1/4 Phil. Pan Hd. ....	2
6	00-434485	Moulding – Panel Edge .....	1
7	00-434409	Roll – Listing Paper .....	2
8	00-434401-00002	Spool – Printer Paper .....	1
9	00-434396	Guide – Paper Feed (Upper) .....	2
10	NS-031-50	Stop Nut 6-32 Hex (SST) .....	2
11	00-434400-00001	Retainer – Paper Roll (LH) .....	2
12	NS-031-50	Stop Nut 6-32 Hex (SST) .....	4
13	00-434391	Stud Panel – Dual Printer .....	1
14	00-434399	Stud Panel – Single Printer (Not Shown) .....	1
15	00-434400-00002	Retainer – Paper Roll (RH) .....	2
16	NS-031-50	Stop Nut 6-32 Hex (SST) .....	4
17	00-434492	Fastener – Captive Snap-In Knob .....	1
18	00-434393	Spacer – Tearbar (Use on Paper Printer Side Only) .....	2
19	00-434420	Guide & Tearbar Assy. (Use on Paper Printer Side Only) .....	1
20	00434392	Guide – Paper Feed (Lower) (Use on Label Printer Side Only) .....	1
21	NS-031-50	Stop Nut 6-32 Hex (SST) .....	2
22	00-434361	Printer – Thermal (Serial) .....	2
23	00-434395	Stud Bracket – Printer .....	2
24	00-434402	Guide – Printer (Paper) .....	1
25	00-889040-00005	Cover – Dust .....	1
26	00-630161-00058	Screw 8-18 x 1/2 Sq. Hd. ....	AR
27	01-012639	Spacer 4-40 x 3/16 Lg. ....	2
28	01-012640	Nut 4-40 .....	2
29	01-012641	Lockwasher #4 .....	2
30	00-434408	Roll – Labels .....	2
31	00-434401-00002	Spool – Printer Paper .....	1

\*All Quantities Listed Are For Double Printer Machines Unless  
Otherwise Specified.

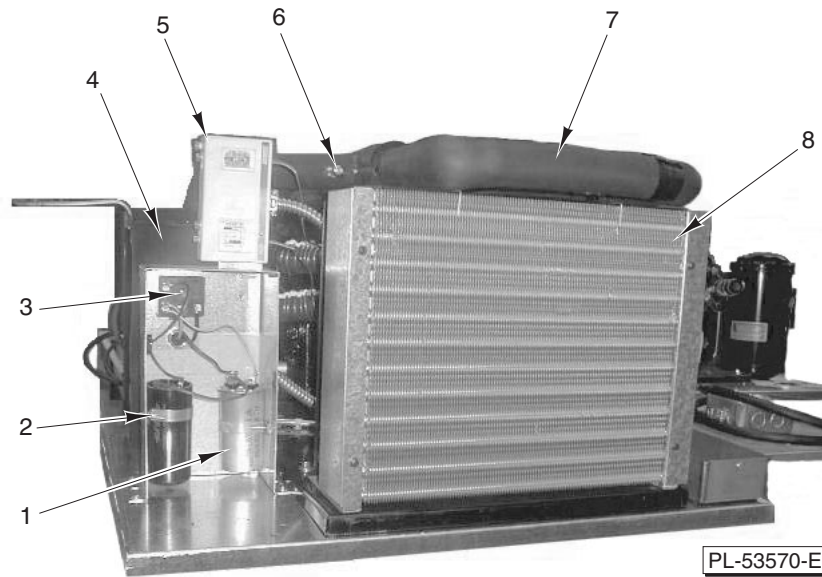


PL-56098

**ELECTRICAL SECTION ASSEMBLY**

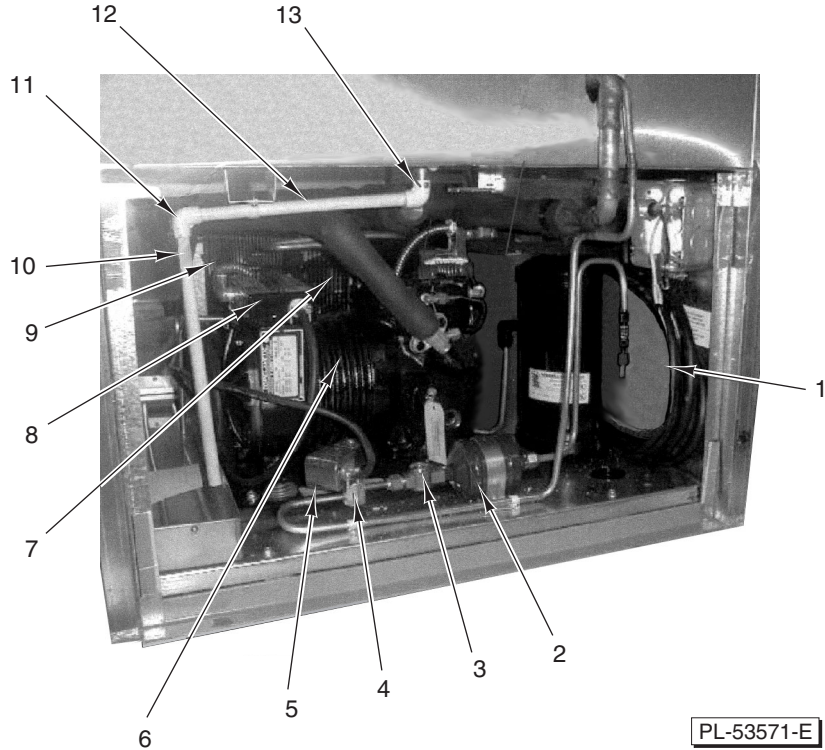
**ELECTRICAL SECTION ASSEMBLY**

ILLUS.	PART NO.	NAME OF PART	AMT.
PL-56098			
1	00-630143-00056	Control Box Assy. ....	1
2	00-434313	Control Board Assy. ....	1
3	01-010415	Short Control Cable ....	1
4	00-630143-00057	Door Switch Cable (Connects Into TB) ....	1
5	01-010447	Control Cable – High Voltage Board ....	1
6	00-630161-00058	Screw 8-18 x 1/2 Sq. Hd. ....	22
7	01-010445	High Voltage Board ....	1
8	01-010449	Output Cable – High Voltage Board ....	1
9	01-010448	Input Cable – High Voltage Board ....	1
10	00-889075	Wiring Diagram ....	1
11	00-889028-00003	Electric Section Mounting Plate ....	1
12	00-630142-00040	Plastic Track and Cover ....	1
13	01-010250	Mounting Rail ....	1
14	00-630141-00072	End – Stop ....	1
15	00-630141-00070	End – Section ....	2
16	01-010436	Secondary Breaker for Electronic Board ....	2
17	00-630183-00008	Secondary Breaker ....	1
18	00-630141-00076	Bar – Jumper (10 Pole) ....	9
19	00-630141-00013	Contactors 9 Amps. ....	1
20	01-010500	Defrost Contactor ....	1
21	00-630141-00012	Contactors 12 Amps. ....	1
22	01-010431	Main breaker ....	1
23	00-630141-00069	Connector ....	20
24	00-630142-00001	Connector ....	4
25	00-630183-00002	Varistor ....	2
26	00-630141-00073	Block – Terminal ....	3
27	01-008043	Trick Nut 8-32 ....	6
28	01-012585	Cap Screw 8-32 x 1/2 Phil. Rd. Hd. (SST) ....	6
29	00-630182-00098	Food Probe 36 Lg. (Previous Construction) ....	3
30	00-434330	Food Probe 39 Lg. ....	3
31	01-014622	Safety Thermostat ....	1
32	00-811201	Capacitor ....	3
33	00-889028-00002	Capacitors Bracket ....	1
34	00-630143-00059	Line Filter ....	1
35	---	Probe Female Connector ....	3
36	00-630182-00099	Coil and Air Probe ....	2
37	01-010411	Short Probe Cable ....	1



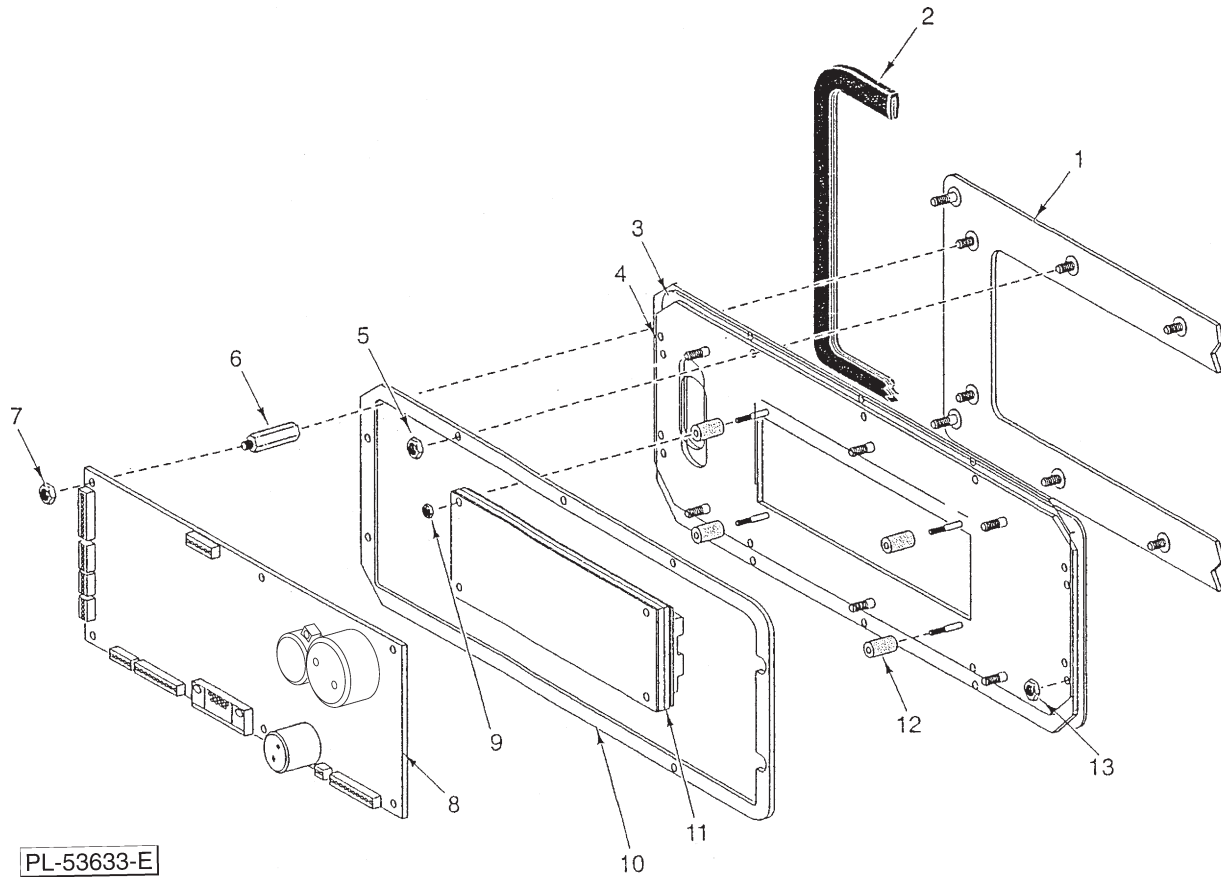
**CONDENSING UNIT  
(FRONT)**

ILLUS.	PART NO.	NAME OF PART	AMT.
PL-53570-E			
1	00-630184-00013	Capacitor – Run (40 MFD) (440 V.) .....	1
2	00-630184-00014	Capacitor – Start (For Compressor) (440 V.) .....	1
3	00-630184-00012	Relay (For Compressor) .....	1
4	00-630182-00095	Accumulator – Suction (RR-3738) .....	1
5	00-630184-00008	Switch – Pressure (TBD) .....	1
6	01-011304	Valve – OPR .....	1
7	00-630182-00028	Absorber – Vibration (3434FX) .....	1
8	00-630184-00009	Fan – Blades .....	1



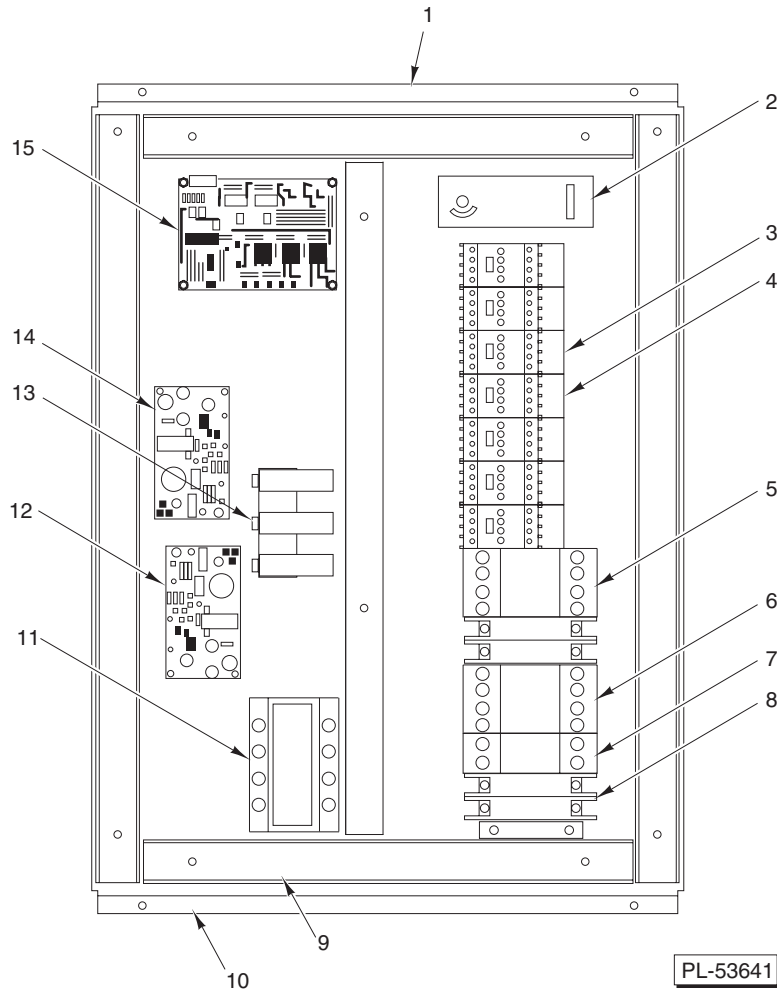
**CONDENSING UNIT  
(REAR VIEW)**

ILLUS.	PART NO.	NAME OF PART	AMT.
PL-53571-E			
1	00-630182-00095	Accumulator – Suction (RR-3738).....	1
2	00-630181-00063	Drier – Filter (UK-083) .....	1
3	00-630180-00047	Glass – Moisture Indicator .....	1
4	00-630181-00065	Solenoid – Valve (E6S130-3/8) .....	1
5	00-630181-00064	Solenoid – Valve (MKC-1-Dual) .....	1
6	01-039513	Compressor (KAKB-011E-CAV-800).....	1
7	00-630184-00010	Motor – Fan (For Compressor) .....	1
8	00-630184-00011	Motor – Protector (CRA4763-18) .....	1
9	00-630184-00009	Fan – Blades .....	1
10	01-015810	Tube – PVC .....	1
11	01-015707	Elbow – PC 900 .....	1
12	01-015810	Tube – PVC .....	1
13	01-015707	Elbow – PC 900 .....	1



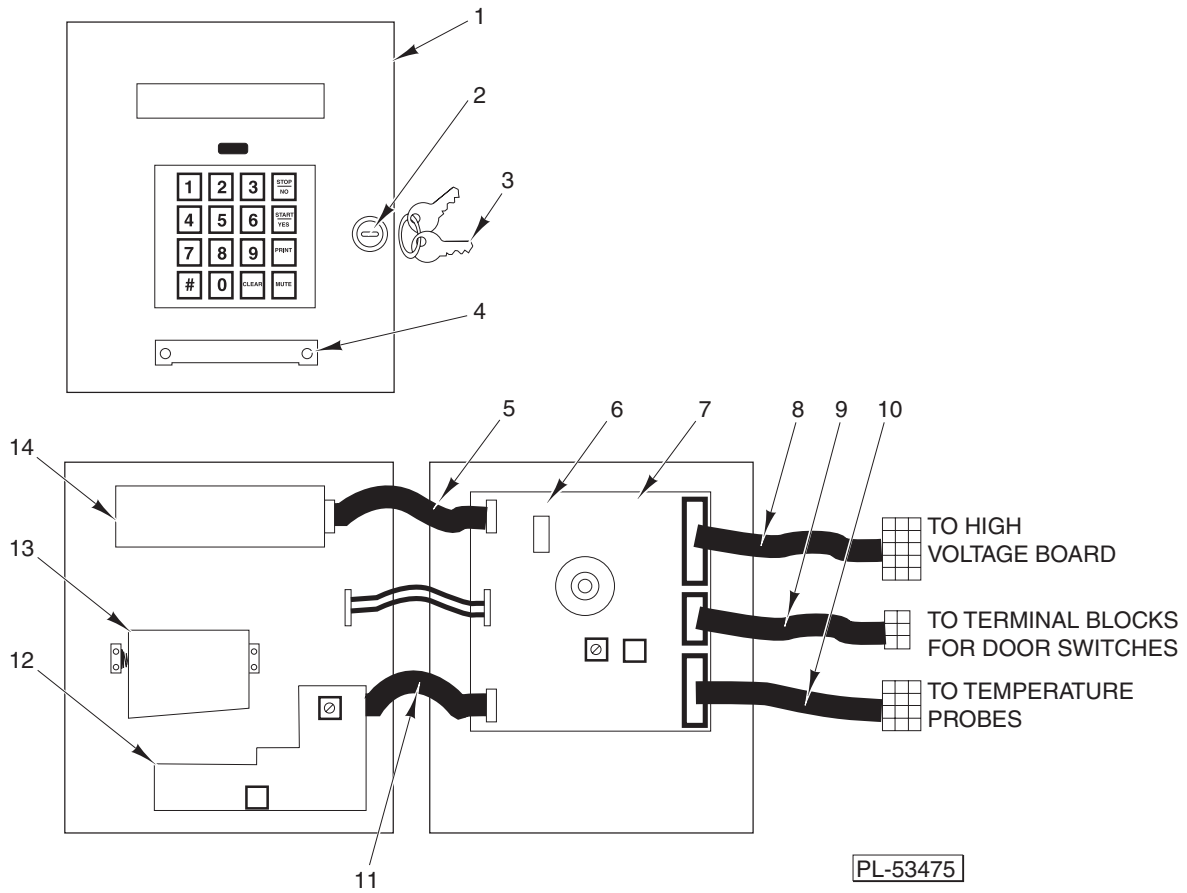
**CONTROL PANEL UNIT**

ILLUS.	PART NO.	NAME OF PART	AMT.
PL-53633-E			
1	00-434487	Trim – Control Panel .....	2
2	00-434485	Moulding – Panel Edge .....	1
3	00-434333	Switch – Membrane Keypad .....	1
4	00-434386	Retainer – Membrane Weldment .....	1
5	NS-031-50	Stop Nut 6-32 Hex (SST) .....	6
6	00-434422-00002	Moulding – Panel Edge .....	6
7	NS-031-50	Stop Nut 6-32 Hex (SST) .....	6
8	00-434313	Board – Control Assy. ....	1
9	00-434460	Nut – Nylon 2-56 Hex .....	4
10	00-434384	Spacer – Membrane Switch .....	1
11	00-434317	Display – VFD (Serial) .....	1
12	00-434316	Spacer – Nylon .....	4
13	NS-047-81	Stop Nut 8-32 Hex .....	2



**ELECTRICAL UNIT**

ILLUS.	PART NO.	NAME OF PART	AMT.
PL-53641			
1	00-630142-00040	Duct – Wiring 1½ x 3 .....	1
2	01-014622	Control – Safety Control .....	1
3	00-630141-00069	Connector – Electric M4/6 .....	1
4	00-630142-00001	Terminal Block (#M6/8P) .....	1
5	01-010500	Contactor (3 Pole) (25 Amp.) .....	1
6	00-630142-00012	Relay – Hi Limit (OMRON #MK2P-SAC-24-0) .....	1
7	01-010461	Breaker – Transformer .....	1
8	01-010431	Breaker – Main (2 Pole) (15 Amp.) .....	1
9	00-630142-00040	Duct – Wiring .....	1
10	00-889028-00003	Plate – Electric Mounting .....	1
11	00-294500-046-1	Transformer Pilot Control (150 VA) .....	1
12	00-434359-00002	Power Supply (PD-25-7.5) .....	1
13	00-811201	Capacitor – Run (2UF) .....	1
14	00-434359-00001	Power Supply (PD-25 Amp.) .....	1
15	00-434319	Board – I/O .....	1



**CONTROL BOX ASSEMBLY**

ILLUS.	PART NO.	NAME OF PART	AMT.
PL-53475			
1	00-282053	Keypad – Membrane .....	1
2	00-630184-00015	Door Lock .....	1
3	00-630154-00059	Keys – Door CH 751 .....	1
4	00-282127	Bar – Paper Tear .....	1
5	00-282070	Cable – Display .....	1
6	01-010453	Eprom (Version 2L) .....	1
7	00-282049	Controller Board Assy. ....	1
8	00-282066	Cable – Sensor Input .....	1
9	00-630184-00016	Cable – Door Switches .....	1
10	00-282057	Cable – Food Probe Coil & Air .....	1
11	00-282069	Cable – Printer Interface .....	1
12	00-282050	Printer Assy. (With Interface Board) .....	1
13	00-282051	Paper – Printer .....	1
14	00-282052	Display .....	1
	00-630143-00056	Control Box Assy. (Incls. Items 1 thru 14) .....	1
	01-010453	Chip (2L) .....	1