



CATALOG OF REPLACEMENT PARTS

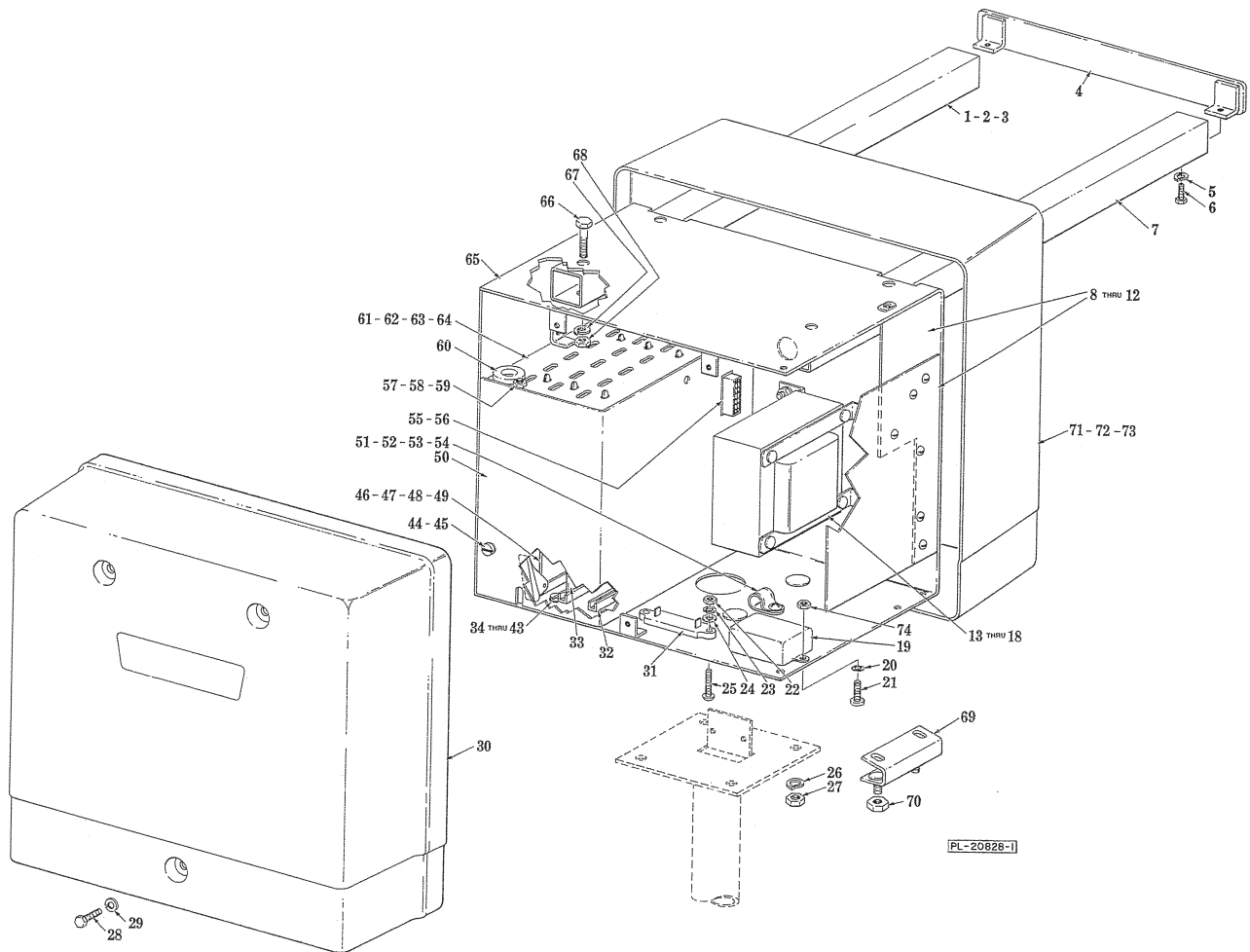


HILITE™ PRINTER APPLIER SYSTEM

HPA — ML-44040
HPD — ML-44045

TABLE OF CONTENTS

| Description | Page |
|---------------------------------------------------|------|
| Control Box Unit | 4 |
| Pivot Plate Unit (Lower Half) | 6 |
| Pivot Plate Unit (Upper Half) | 8 |
| Printer Arm Unit | 10 |
| Pedestal & Column | 12 |
| Conveyor Unit (Belt Type Non-Motorized) | 14 |
| Conveyor Unit (Belt Type Motorized) | 16 |
| Keyboard Unit | 18 |

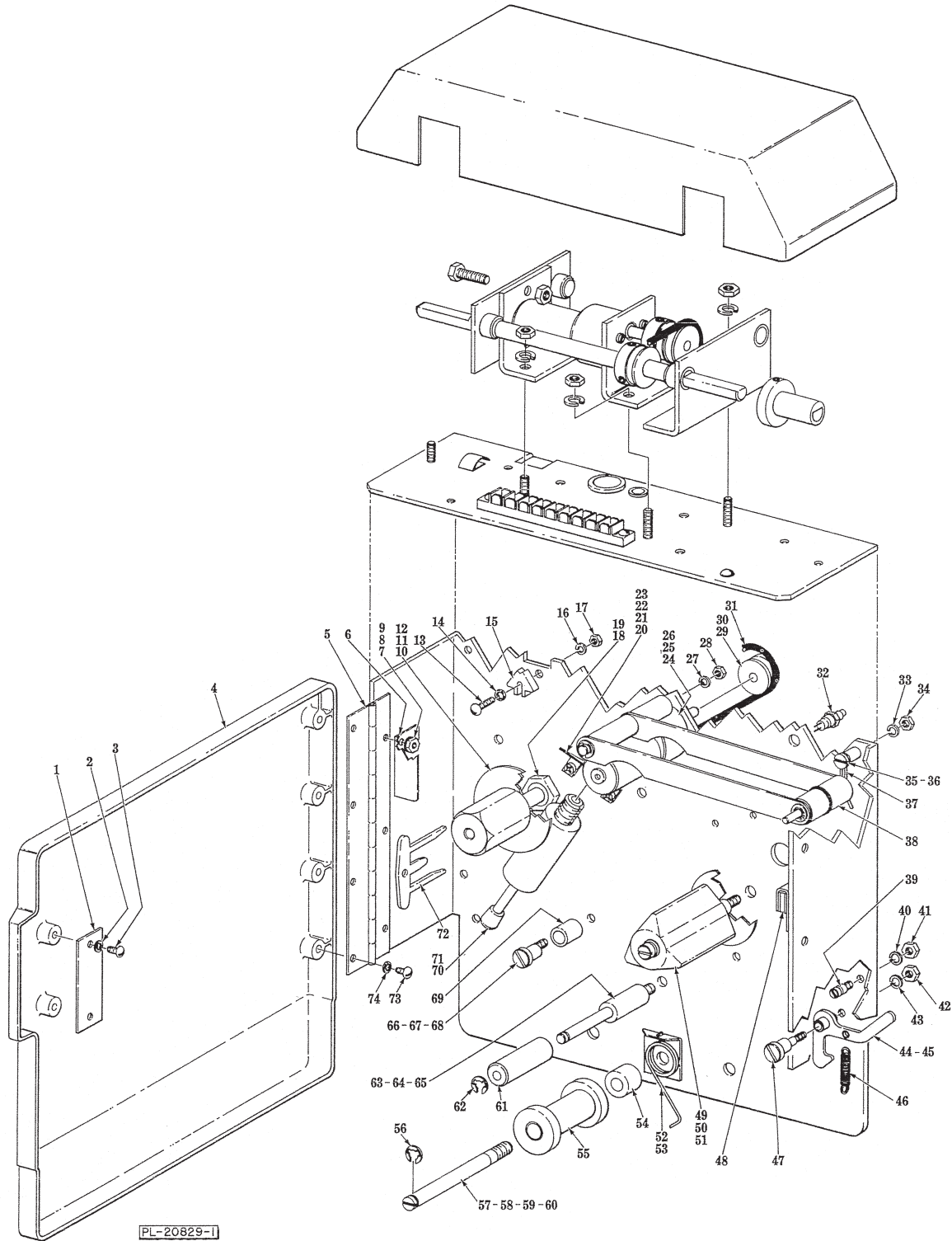


CONTROL BOX UNIT

| ILLUS. PL-20828-1 | PART NO. | NAME OF PART ₃₀ | AMT. |
|----------------------|-------------|--------------------------------------|------|
| 1 | 175384 | Block - Stop Switch | 1 |
| 2 | 175249 | Rail - Carriage (L.H.) | 1 |
| 3 | SC-117-60 | Mach. Screw 10-32 x 1¼ Oval Hd | 1 |
| 4 | 175252 | Plate Assy. - End | 1 |
| 5 | WL-13-11 | Lock Washer 10 Int. Shakeproof | 2 |

CONTROL BOX UNIT (Cont.)

| ILLUS. PL-20828-1 | PART NO. | NAME OF PART ³⁰ | AMT. |
|----------------------|-------------|-------------------------------------------------------------|------|
| 6 | SC-112-3 | Mach. Screw 10-24 x 1/2 Pan Hd | 2 |
| 7 | 175250 | Rail - Carriage (R.H.) | 1 |
| 8 | 259075 | Board - Assy. - Power Supply | 1 |
| 9 | SC-18-62 | Mach. Screw 10-24 x 3/8 Phil. Pan Hd | 2 |
| 10 | WL-4-40 | Lock Washer 10 Medium | 2 |
| 11 | FE-17-4 | Fuse - 5A Slo-Blo | 2 |
| 12 | FE-22-73 | Fuse Holder | 2 |
| 13 | 259463 | Transformer Assy | 1 |
| 14 | WS-23-20 | Washer | 4 |
| 15 | WL-4-40 | Lock Washer 10 Medium | 4 |
| 16 | SC-18-62 | Mach. Screw 10-24 x 3/8 Phil. Pan Hd | 4 |
| 17 | FE-22-22 | Fuse 3/4A Slo-Blo | 1 |
| 18 | FE-22-73 | Fuse Holder | 1 |
| 19 | 259443 | Filter Assy | 1 |
| 20 | WL-13-8 | Lock Washer 8 Int. Shakeproof | 2 |
| 21 | SC-18-31 | Mach. Screw 8-32 x 3/8 Phil. Pan Hd | 2 |
| 22 | NS-9-7 | Mach. Nut 6-32 Hex | 2 |
| 23 | WL-8-2 | Lock Washer 6 Int. Shakeproof | 2 |
| 24 | WS-23-15 | Washer | 2 |
| 25 | SC-9-97 | Mach. Screw 6-32 x 3/4 Rd. Hd | 2 |
| 26 | WL-6-23 | Lock Washer 5/16 Medium | 4 |
| 27 | NS-15-11 | Mach. Nut 5/16-18 Hex | 4 |
| 28 | SC-112-3 | Mach. Screw 10-24 x 1/2 Pan Hd | 3 |
| 29 | WL-13-11 | Lock Washer 10 Int. Shakeproof | 3 |
| 30 | 175200 | Cover - Rear | 1 |
| 31 | 259303 | Switch - Rocker 2A | 1 |
| 32 | 175240 | Guide - Card | 6 |
| 33 | 258858 | Board Assy. - Memory | 1 |
| 34 | 175241 | Spacer | 2 |
| 35 | 259001 | RAMS | AR |
| 36 | 259487 | Prom (U10) (ID #259002-6) (Memory Board) | AR |
| 37 | 259488 | Prom (U11) (ID #259002-7) (Memory Board) | AR |
| 38 | 259506 | Prom (U7) (ID #259002-8) (Memory Board) | AR |
| 39 | 259507 | Prom (U8) (ID #259002-9) (Memory Board) | AR |
| 40 | 175241 | Spacer | 2 |
| 41 | WL-4-40 | Lock Washer 10 Medium | 2 |
| 42 | SC-18-47 | Mach. Screw 10-32 x 3/4 Pan Hd | 2 |
| 43 | NS-9-30 | Mach. Nut 10-32 Hex | 2 |
| 44 | SC-18-62 | Mach. Screw 10-24 x 3/8 Phil. Pan Hd | 2 |
| 45 | WL-4-40 | Lock Washer 10 Medium | 2 |
| 46 | 258859 | Control Board Assy | 1 |
| 47 | 259001 | RAMS | AR |
| 48 | 259489 | Prom (U15) (ID #259002-4) (Control Board) | AR |
| 49 | 259490 | Prom (U21) (ID #259002-5) (Control Board) | AR |
| 50 | 175242 | Cover - Card Box | 1 |
| 51 | 30695 | Clamp | 1 |
| 52 | SC-66-20 | Mach. Screw 10-32 x 1/2 Phil. Truss Hd | 1 |
| 53 | WL-4-40 | Lock Washer 10 Medium | 1 |
| 54 | NS-9-30 | Mach. Nut 10-32 Hex | 1 |
| 55 | 258864 | Mother Board Assy | 1 |
| 56 | 259040 | Harness - Power Supply (Power Supply Board to Mother Board) | 1 |
| 57 | SC-18-33 | Mach. Screw 8-32 x 5/16 Phil. Pan Hd | 1 |
| 58 | WL-7-7 | Lock Washer 8 Ext. Shakeproof | 1 |
| 59 | NS-9-12 | Mach. Nut 8-32 Hex | 1 |
| 60 | 252620 | Strain - Relief | 1 |
| 61 | 175238 | Box - Card | 1 |
| 62 | 255527 | Support - PC Board | 6 |
| 63 | 258805 | Cable - Ribbon Assy | 1 |
| 64 | 257128 | Screwlock - Female | 8 |
| 65 | 175234 | Box - Control | 1 |
| 66 | SC-37-68 | Cap Screw 5/16-18 x 1 1/2 Hex | 4 |
| 67 | WL-3-47 | Lock Washer 5/16 Medium | 4 |
| 68 | NS-13-14 | Mach. Nut 5/16-18 Hex | 4 |
| 69 | 175343 | Bracket - Control Box | 2 |
| 70 | 175338 | Nut - Special 5/16-18 SST. (Use with item 69) | 2 |
| 71 | 175199 | Cover - Front | 1 |
| 72 | WL-13-11 | Lock Washer 10 Int. Shakeproof | 3 |
| 73 | SC-112-3 | Mach. Screw 10-24 x 1/2 Pan Hd | 3 |
| 74 | NS-9-12 | Mach. Nut 8-32 Hex | 2 |
| | 259413 | Cord - Power | 1 |

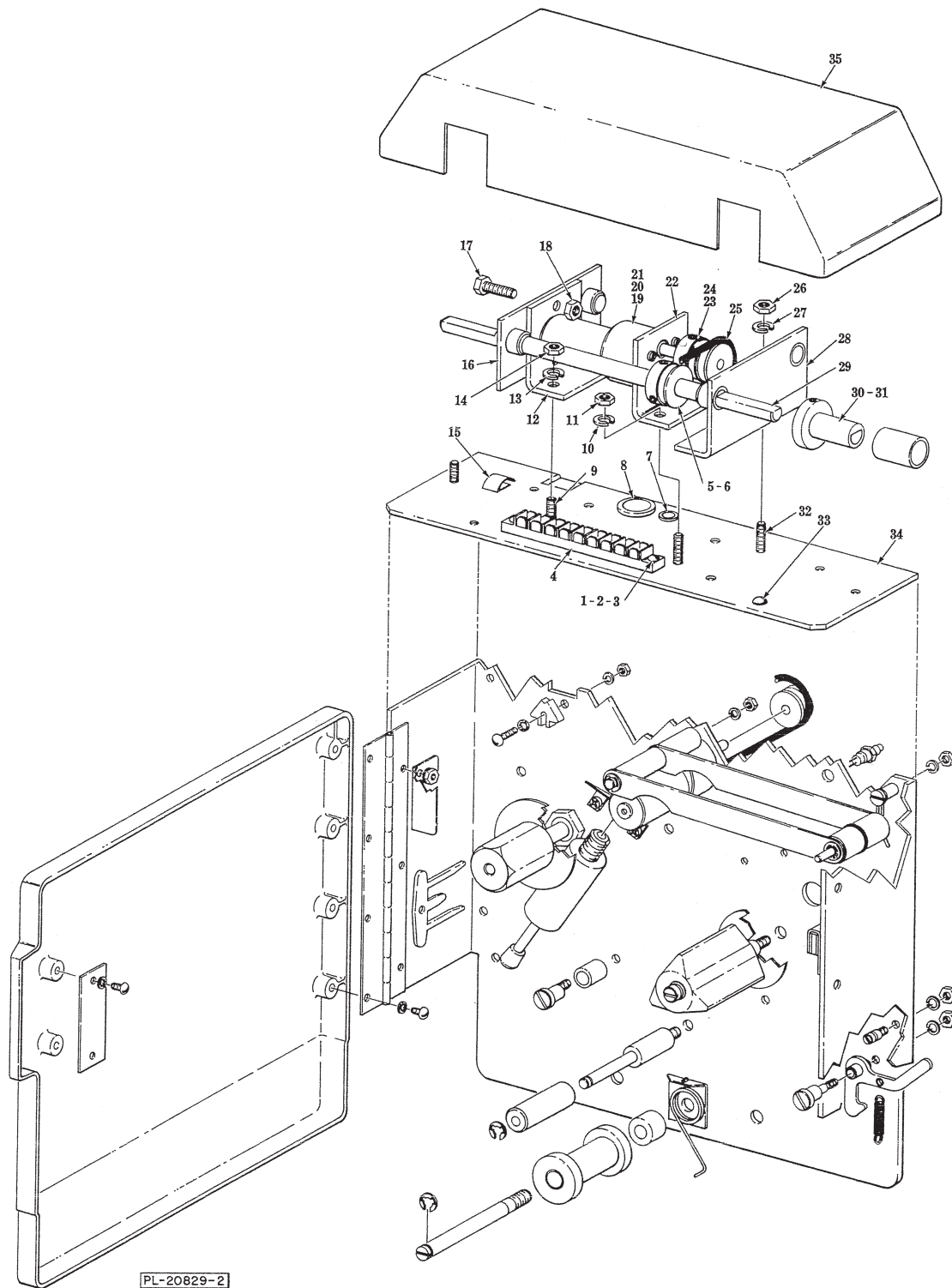


**PIVOT PLATE UNIT
(LOWER HALF)**

| ILLUS. PL-20829-1 | PART NO. | NAME OF PART ³⁰ | AMT. |
|----------------------|-------------|--------------------------------------|------|
| 1 | 258765 | Plate - Magnet | 1 |
| 2 | WL-13-11 | Lock Washer 10 Int. Shakeproof | 2 |
| 3 | SC-93-21 | Mach. Screw 10-32 x 3/8 Pan Hd | 2 |
| 4 | 175201 | Cover - Pivot Plate | 1 |
| 5 | 258766 | Hinge | 1 |

**PIVOT PLATE UNIT (Cont.)
(LOWER HALF)**

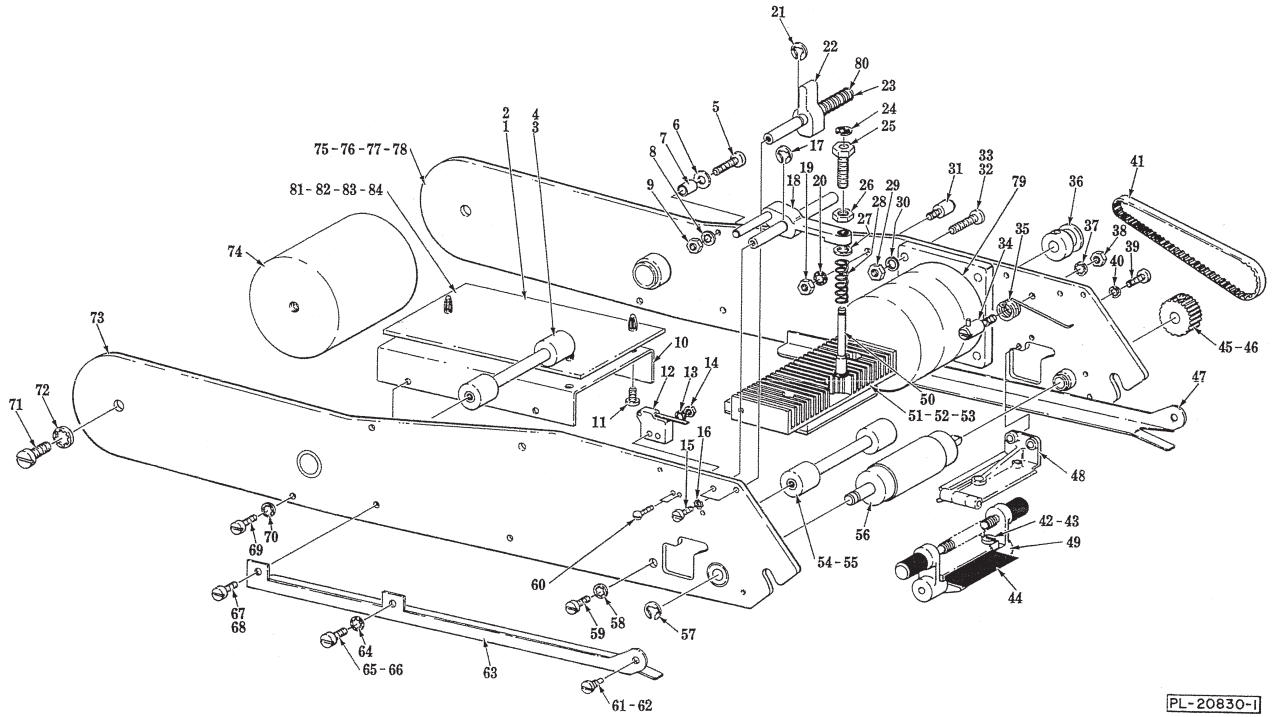
| ILLUS. PL-20829-1 | PART NO. | NAME OF PART ³⁰ | AMT. |
|----------------------|-------------|--------------------------------------------------|------|
| 6 | 175408 | Latch - Door | 1 |
| 7 | SC-66-20 | Mach. Screw 10-32 x 1/2 Phil. Truss Hd | 1 |
| 8 | 333619 | Washer - Belleville | 1 |
| 9 | NS-31-49 | Stop Nut 10-32 Hex | 1 |
| 10 | 175336 | Hub - Take-Up Assy | 1 |
| 11 | 175398 | Pulley - Take-Up | 1 |
| 12 | SC-55-32 | Set Screw 6-32 x 3/16 Hdl. Cup Pt | 2 |
| 13 | SC-21-2 | Mach. Screw 4-40 x 1/2 Rd. Hd | 1 |
| 14 | WS-30-3 | Washer | 1 |
| 15 | 258429 | Switch - Retro Photo | 1 |
| 16 | WL-13-2 | Lock Washer 4 Int. Shakeproof | 1 |
| 17 | NS-11-1 | Mach. Nut 4-40 Hex | 1 |
| 18 | 41038 | Hub Assy | 1 |
| 19 | 41032 | Nut | 1 |
| 20 | 175269 | Bracket - Dampener | 1 |
| 21 | SC-93-4 | Mach. Screw 8-32 x 1/2 Phil. Pan Hd | 2 |
| 22 | WL-13-8 | Lock Washer 8 Int. Shakeproof | 2 |
| 23 | NS-11-12 | Mach. Nut 8-32 Hex | 2 |
| 24 | 175262 | Motor - Gear (D.C.) | 1 |
| 25 | SC-109-66 | Mach. Screw 4-40 x 3/8 Pan Hd | 3 |
| 26 | WL-13-2 | Lock Washer 4 Int. Shakeproof | 3 |
| 27 | WL-6-7 | Lock Washer 10 Medium | 1 |
| 28 | NS-11-23 | Mach. Nut 10-32 Hex | 1 |
| 29 | 175398 | Pulley - Take-Up | 2 |
| 30 | SC-55-32 | Set Screw 6-32 x 3/16 Hdl., Cup Pt | 2 |
| 31 | 175390 | Belt - O-Ring Drive | 1 |
| 32 | 259035 | Switch - Limit | 1 |
| 33 | WL-6-7 | Lock Washer 10 Medium | 1 |
| 34 | NS-11-23 | Mach. Nut 10-32 Hex | 1 |
| 35 | 175283 | Spacer - Spring | 1 |
| 36 | SC-21-78 | Mach. Screw 10-32 x 1 Rd. Hd | 1 |
| 37 | 257399 | Clip - Retaining Arm | 1 |
| 38 | 175294 | Retainer - Label Assy | 1 |
| 39 | 175184 | Stud - Pivot Plate | 1 |
| 40 | WL-14-5 | Lock Washer 8 Ext. Shakeproof | 1 |
| 41 | NS-11-12 | Mach. Nut 8-32 Hex | 1 |
| 42 | NS-11-12 | Mach. Nut 8-32 Hex | 1 |
| 43 | WL-14-5 | Lock Washer 8 Ext. Shakeproof | 1 |
| 44 | 175180 | Latch Assy | 1 |
| 45 | 175182 | Bumper - Printer Stop | 2 |
| 46 | 175271 | Spring - Printer Latch | 1 |
| 47 | 175181 | Stud - Latch Pivot | 1 |
| 48 | 175392 | Magnet - Door | 1 |
| 49 | 175263 | Arbor & Shaft Assy | 1 |
| 50 | WL-6-17 | Lock Washer 1/4 Medium | 1 |
| 51 | NS-15-1 | Mach. Nut 1/4-20 Hex | 1 |
| 52 | 175417 | Plate - Spring | 1 |
| 53 | 175415 | Spring | 1 |
| 54 | 175344 | Spacer - Printer | 1 |
| 55 | 175148 | Roller | 1 |
| 56 | RR-9-10 | Retaining Ring | 1 |
| 57 | 175147 | Shaft - Roller | 1 |
| 58 | WS-28-37 | Washer | 1 |
| 59 | WL-6-23 | Lock Washer 5/16 Medium | 1 |
| 60 | NS-15-1 | Mach. Nut 1/4-20 Hex | 1 |
| 61 | 175289 | Roll - Label Supply | 1 |
| 62 | RR-8-20 | Retaining Ring | 1 |
| 63 | 175281 | Shaft - Label Retaining | 1 |
| 64 | WL-6-7 | Lock Washer 10 Medium | 1 |
| 65 | NS-11-23 | Mach. Nut 10-32 Hex | 1 |
| 66 | 175272 | Stud - Eccentric Stop | 1 |
| 67 | WL-14-5 | Lock Washer 8 Ext. Shakeproof | 1 |
| 68 | NS-11-12 | Mach. Nut 8-32 Hex | 1 |
| 69 | 175182 | Bumper | 1 |
| 70 | 175393 | Damper | 1 |
| 71 | 175396 | Bumper - Dampener | 1 |
| 72 | 175319 | Key - Take-Up | 1 |
| 73 | SC-93-21 | Mach. Screw 10-32 x 3/8 Pan Hd | 4 |
| 74 | WL-13-11 | Lock Washer 10 Int. Shakeproof | 4 |
| | 175391 | Clamp - Cable | 3 |
| | 175423 | Spring - Torsion (R.H.) (Use with items 87 & 88) | 1 |



**PIVOT PLATE UNIT
(TOP HALF)**

**PIVOT PLATE UNIT
(TOP HALF)**

| ILLUS. PL-20829-2 | PART NO. | NAME OF PART ³⁰ | AMT. |
|----------------------|-------------|------------------------------------------|------|
| 1 | SC-98-4 | Mach. Screw 6-32 x 5/8 Rd. Hd | 2 |
| 2 | WL-14-3 | Lock Washer 6 Ext. Shakeproof | 2 |
| 3 | NS-11-7 | Mach. Nut 6-32 Hex | 2 |
| 4 | 259375 | Terminal Block (10 Position) | 1 |
| 5 | 175334 | Pulley - Driven | 2 |
| 6 | SC-55-1 | Set Screw 10-24 x 1/4 Hdls. Cup Pt | 4 |
| 7 | FE-19-1 | Bushing - Electrical Heyco 2073 | 1 |
| 8 | FE-21-13 | Bushing - Electrical Heyco 2873 | 1 |
| 9 | SC-41-5 | Cap Screw 1/4-20 x 5/8 Hex Hd | 1 |
| 10 | WL-6-17 | Lock Washer 1/4 Medium | 2 |
| 11 | NS-15-1 | Mach. Nut 1/4-20 Hex | 2 |
| 12 | 175373 | Bracket - Carriage Level | 1 |
| 13 | WL-6-17 | Lock Washer 1/4 Medium | 2 |
| 14 | NS-15-1 | Mach. Nut 1/4-20 Hex | 2 |
| 15 | 257114 | Contact - Finger | 2 |
| 16 | 175379 | Plate - Carriage Bearing Assy | 1 |
| 17 | SC-41-5 | Cap Screw 1/4-20 x 5/8 Hex Hd | 2 |
| 18 | NS-41-4 | Lock Nut 1/4-20 Eslok | 2 |
| 19 | 175262 | Motor - Gear (D.C.) | 1 |
| 20 | SC-109-66 | Mach. Screw 4-40 x 3/8 Pan Hd | 3 |
| 21 | WL-13-2 | Lock Washer 4 Int. Shakeproof | 3 |
| 22 | 175360 | Bracket - Motor | 1 |
| 23 | 175337 | Pulley - Drive | 1 |
| 24 | SC-55-1 | Set Screw 10-24 x 1/4 Hdls. Cup Pt | 3 |
| 25 | 175333 | Belt - Drive | 2 |
| 26 | NS-15-1 | Mach. Nut 1/4-20 Hex | 1 |
| 27 | WL-6-17 | Lock Washer 1/4 Medium | 1 |
| 28 | 175357 | Bracket - Carriage Assy | 1 |
| 29 | 175359 | Shaft - Carriage | 2 |
| 30 | 175431 | Carriage & Roller Assy. (Incls. item 31) | 4 |
| 31 | SC-55-1 | Set Screw 10-24 x 1/4 Hdls. Cup Pt | 4 |
| 32 | SC-41-5 | Cap Screw 1/4-20 x 5/8 Hex Hd | 2 |
| 33 | 175365 | Plug - Guide | 4 |
| 34 | 175255 | Plate - Pivot | 1 |
| 35 | 175290 | Cover - Carriage | 1 |

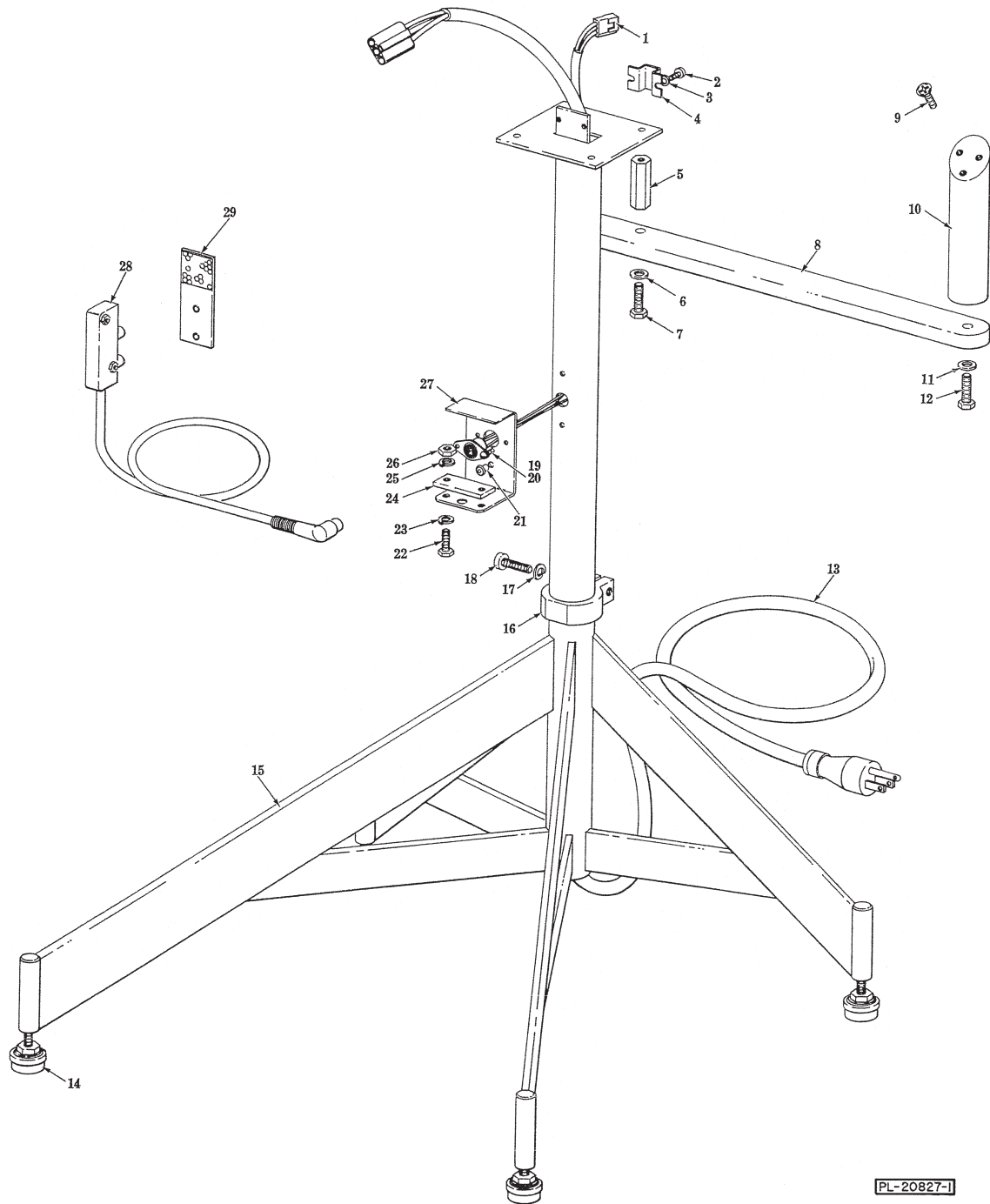


PRINT ARM UNIT

| ILLUS. PL-20830-1 | PART NO. | NAME OF PART ³⁰ | AMT. |
|----------------------|-------------|------------------------------------------------------|------|
| 1 | 258863 | Board Assy. - Printer | 1 |
| 2 | 255527 | Support - PC Board | 3 |
| 3 | 175150 | Roller | 2 |
| 4 | 175168 | Shaft - Cam | 1 |
| 5 | SC-119-24 | Mach. Screw 6-32 x 3/4 Phil. Pan Hd | 1 |
| 6 | WS-23-21 | Washer | 1 |
| 7 | 175416 | Spacer - Spring | 1 |
| 8 | WL-13-5 | Lock Washer 6 Int. Shakeproof | 1 |
| 9 | NS-11-7 | Mach. Nut 6-32 | 1 |
| 10 | 175161 | Bracket - Circuit Board | 1 |
| 11 | SD-15-37 | Self-Tapping Screw 6-32 x 1/4 Phil. Pan Hd., Type TT | 3 |
| 12 | 259034 | Switch Assy. Printhead Position | 1 |
| 13 | WL-19-29 | Lock Washer 2 Int. Shakeproof | 2 |
| 14 | NS-46-97 | Mach. Nut 2-56 Hex | 2 |
| 15 | SC-66-2 | Mach. Screw 6-32 x 3/8 Phil. Truss Hd | 2 |
| 16 | WL-13-5 | Lock Washer 6 Int. Shakeproof | 2 |
| 17 | RR-8-20 | Retaining Ring | 2 |
| 18 | 175389 | Follower - Cam Assy | 1 |
| 19 | NS-11-12 | Mach. Nut 8-32 Hex | 1 |
| 20 | WL-13-8 | Lock Washer 8 Int. Shakeproof | 1 |

PRINT ARM UNIT (Cont.)

| ILLUS. PL-20830-1 | PART NO. | NAME OF PART ³⁰ | AMT. |
|----------------------|-------------|----------------------------------------------------------------|------|
| 21 | RR-8-20 | Retaining Ring | 1 |
| 22 | 175159 | Cam - Print Head | 1 |
| 23 | 175168 | Shaft - Cam | 1 |
| 24 | RR-11-69 | Retaining Ring | 1 |
| 25 | 175158 | Screw - Adjustment | 1 |
| 26 | NS-18-39 | Jam Nut 1/4-28 Hex | 1 |
| 27 | WS-23-22 | Washer | 1 |
| 28 | 175167 | Spring - Compression | 1 |
| 29 | NS-11-23 | Mach. Nut 10-32 Hex | 4 |
| 30 | WL-6-7 | Lock Washer 10 Medium | 4 |
| 31 | 175186 | Stud - Printer Latch | 1 |
| 32 | SC-117-73 | Mach. Screw 10-32 x 5/8 Phil. Truss Hd | 4 |
| 33 | 175424 | Spacer - Motor Mount | 2 |
| 34 | 175349 | Stud - Spring Assy | 1 |
| 35 | 175154 | Spring - Torsion | 1 |
| 36 | 175141 | Pulley 18T | 1 |
| 37 | WL-13-8 | Lock Washer #8 Int. Shakeproof | 1 |
| 38 | NS-11-12 | Mach. Nut 8-32 Hex | 1 |
| 39 | SC-66-2 | Mach. Screw 6-32 x 3/8 Phil. Truss Hd | 2 |
| 40 | WL-13-5 | Lock Washer 6 Int. Shakeproof | 2 |
| 41 | 175146 | Belt-Timing 105T | 1 |
| 42 | SC-66-2 | Mach. Screw 6-32 x 3/8 Phil. Truss Hd | 2 |
| 43 | WL-13-5 | Lock Washer 6 Int. Shakeproof | 2 |
| 44 | 175151 | Brush | 1 |
| 45 | 175143 | Pulley 36T | 1 |
| 46 | SC-116-81 | Set Screw 8-32 x 3/16 Hdls., Cup Pt | 1 |
| 47 | 175153 | Skid - Left Side | 1 |
| 48 | 175304 | Sensor Assy. - Label | 1 |
| 49 | 175348 | Block Assy. - Peel | 1 |
| 50 | 175157 | Plunger | 1 |
| 51 | 175301 | Print Head Assy | 1 |
| 52 | WL-13-8 | Lock Washer 8 Int. Shakeproof | 2 |
| 53 | 259265 | Screw - Dowel | 2 |
| 54 | 175149 | Shaft - Spacer | 1 |
| 55 | 175150 | Roller | 2 |
| 56 | 175138 | Roller - Drive | 1 |
| 57 | RR-6-22 | Retaining Ring | 2 |
| 58 | WL-13-5 | Lock Washer 6 Int. Shakeproof | 2 |
| 59 | SC-66-2 | Mach. Screw 6-32 x 3/8 Phil. Truss Hd | 2 |
| 60 | SC-81-4 | Mach. Screw 2-56 x 7/16 Rd. Hd | 2 |
| 61 | WL-13-8 | Lock Washer 8 Int. Shakeproof | 2 |
| 62 | 259265 | Screw - Dowel | 2 |
| 63 | 175152 | Skid - Right Side | 1 |
| 64 | SC-66-2 | Mach. Screw 6-32 x 3/8 Phil. Truss Hd | 2 |
| 65 | WL-13-5 | Lock Washer 6 Int. Shakeproof | 2 |
| 66 | NS-11-7 | Mach. Nut 6-32 Hex | 2 |
| 67 | SC-66-2 | Mach. Screw 6-32 x 3/8 Phil. Truss Hd | 2 |
| 68 | NS-11-7 | Mach. Nut 6-32 Hex | 2 |
| 69 | SC-66-2 | Mach. Screw 6-32 x 3/8 Phil. Truss Hd | 2 |
| 70 | WL-13-5 | Lock Washer 6 Int. Shakeproof | 2 |
| 71 | SC-93-12 | Mach. Screw 1/4-20 x 7/16 Phil. Pan Hd | 2 |
| 72 | WL-13-14 | Lock Washer 1/4 Int. Shakeproof | 2 |
| 73 | 175192 | Arm Assy. (R.H.) | 1 |
| 74 | 175163 | Weight - Counter Balance | 1 |
| 75 | 175193 | Arm Assy. (L.H.) | 1 |
| 76 | 175185 | Cover - Printer (Not Shown) | 1 |
| 77 | SD-24-33 | Self-Tapping Screw 6-32 x 1/4 Phil. Pan Hd., Type TT | 4 |
| 78 | WL-13-5 | Lock Washer 6 Int. Shakeproof | 4 |
| 79 | 259000-2 | Motor Assy. - Stepper | 1 |
| 80 | 175418 | Spring - Compression | 1 |
| 81 | 259401 | Harness Assy. CPU/PWR | 1 |
| 82 | 259391 | Cable Assy. - Pivot | 1 |
| 83 | 258848 | Cable Assy. - SPI | 1 |
| 84 | 258839 | Cable Assy. - Ribbon (Printer Board to Print Head) | 1 |
| | 258839 | Cable Assy. (Ribbon) (Connects Printer Board to Print Head) | 1 |
| | 258848 | Cable Assy. (SPI) (Connects Printer Board to Control Board) | 1 |
| | 259391 | Cable Assy. - Pivot (Connects Printer Board to Terminal Block) | 1 |

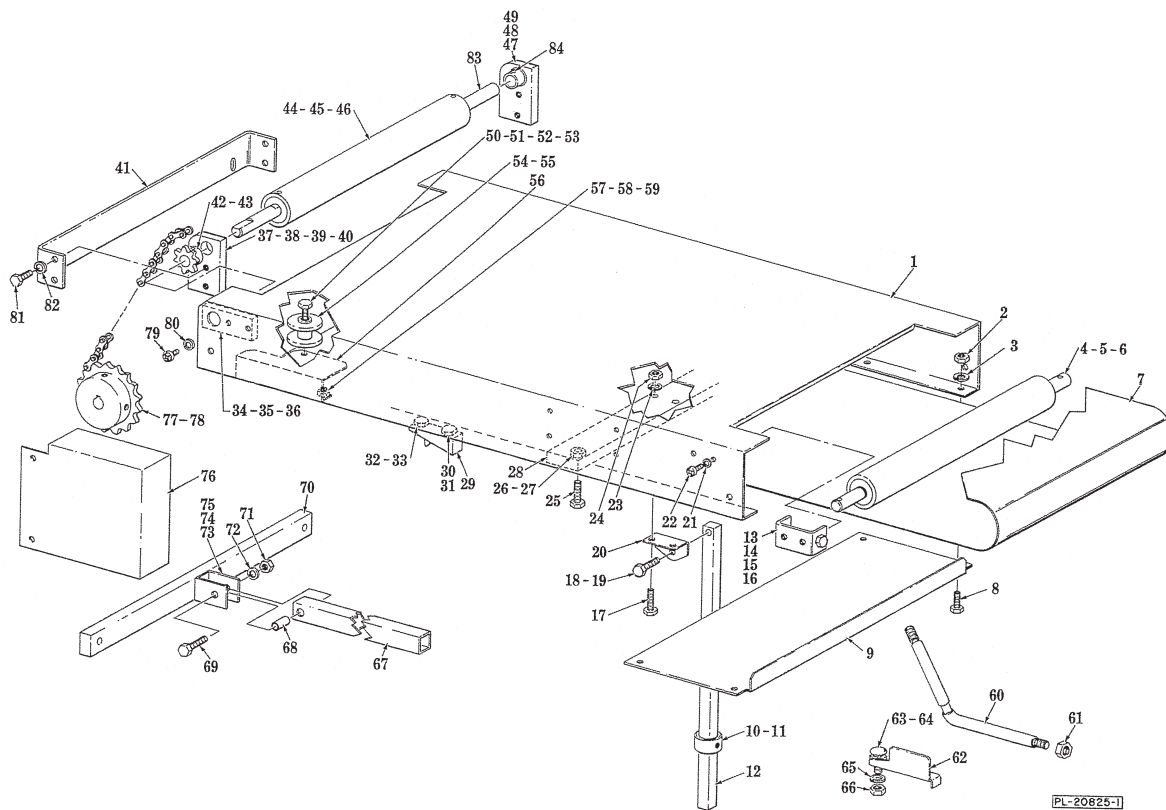


PL-20827-1

PEDESTAL AND COLUMN UNIT

PEDESTAL AND COLUMN UNIT

| ILLUS. PL-20827-1 | PART NO. | NAME OF PART ³⁰ | AMT. |
|----------------------|-------------|-----------------------------------------------|------|
| 1 | 258855 | Cable Assy. (Control Board to Package Sensor) | 1 |
| 2 | SC-93-23 | Mach. Screw 10-24 x 3/8 Phil. Pan Hd | 2 |
| 3 | WL-6-7 | Lock Washer 10 Medium | 2 |
| 4 | 175369 | Clamp - Power Cord | 1 |
| 5 | 175236 | Spacer - Arm Support | 2 |
| 6 | WL-6-23 | Lock Washer 5/16 Medium | 2 |
| 7 | SC-41-13 | Cap Screw 5/16-18 x 1 Hex Hd | 2 |
| 8 | 175230 | Arm - Keyboard Support | 1 |
| 9 | SC-66-20 | Mach. Screw 10-32 x 1/2 Phil. Truss Hd | 3 |
| 10 | 175221 | Post - Keyboard | 1 |
| 11 | WL-6-23 | Lock Washer 5/16 Medium | 1 |
| 12 | SC-41-13 | Cap Screw 5/16-18 x 1 Hex Hd | 1 |
| 13 | 259413 | Cord - Power | 1 |
| 14 | 175194 | Foot - Leveler | 4 |
| 15 | 175218 | Pedestal Assy | 1 |
| 16 | 175174 | Clamp - Column | 1 |
| 17 | WL-6-17 | Lock Washer 1/4 Medium | 1 |
| 18 | SC-59-30 | Cap Screw 1/4-20 x 1 Hex Hd | 1 |
| 19 | SC-21-1 | Mach. Screw 4-40 x 1/4 Rd. Hd | 2 |
| 20 | WL-6-43 | Lock Washer 4 Medium | 2 |
| 21 | 175380 | Rivet - Drive | 2 |
| 22 | SC-41-1 | Cap Screw 1/4-20 x 3/4 Hex Hd | 2 |
| 23 | WL-6-17 | Lock Washer 1/4 Medium | 2 |
| 24 | 175377 | Spacer - Conveyor Mtg | 1 |
| 25 | WL-6-17 | Lock Washer 1/4 Medium | 2 |
| 26 | NS-15-1 | Mach. Nut 1/4-20 Hex | 2 |
| 27 | 175340 | Bracket - Conveyor Mtg | 1 |
| 28 | 175302 | Sensor & Bracket Assy | 1 |
| 29 | 175386 | Bracket & Reflector Assy | 1 |

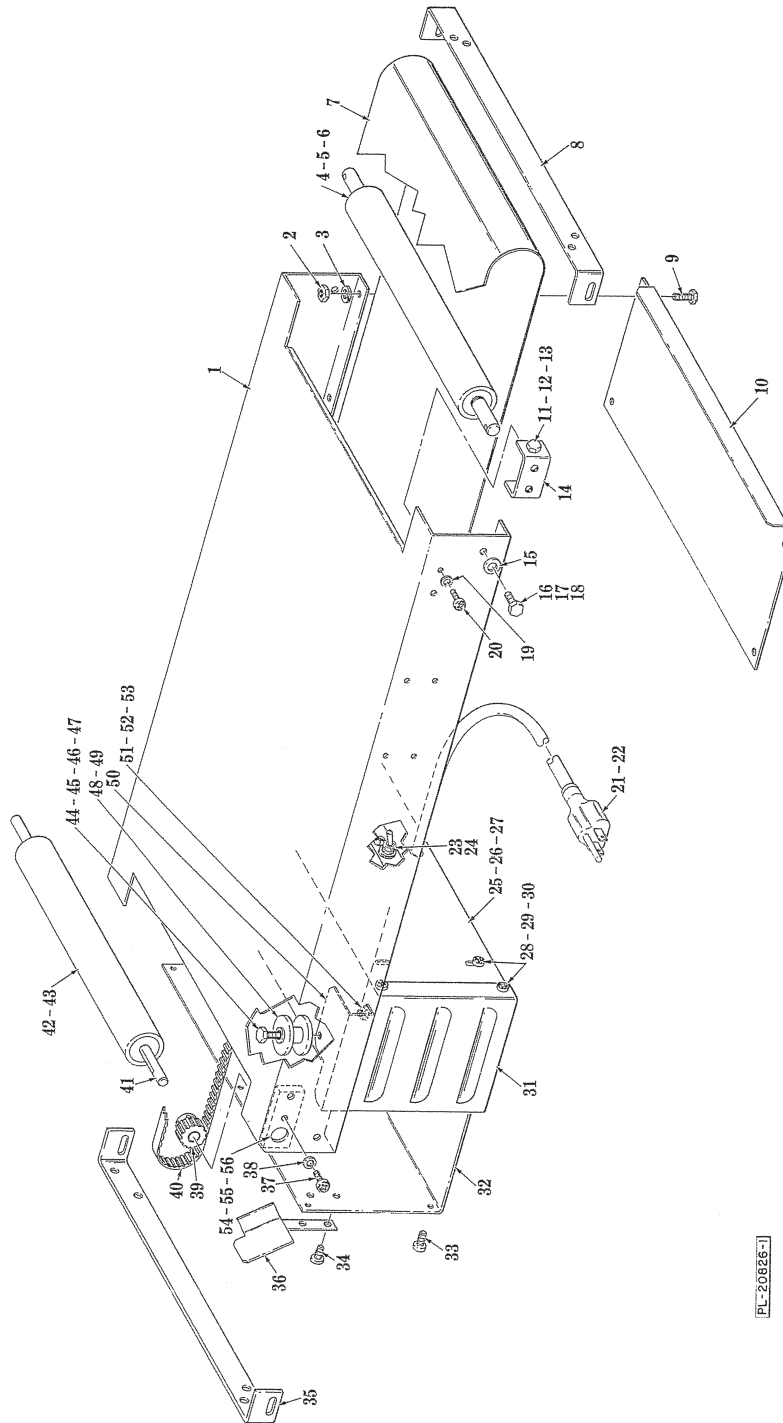


**CONVEYOR UNIT
(BELT TYPE NON-MOTORIZED)**

| ILLUS. PL-20825-1 | PART NO. | NAME OF PART ³⁰ | AMT. |
|----------------------|-------------|----------------------------------------|------|
| 1 | 175229 | Frame - Conveyor | 1 |
| 2 | NS-13-2 | Mach. Nut 1/4-20 Hex | 10 |
| 3 | WL-3-38 | Lock Washer 1/4 Medium | 10 |
| 4 | 175207 | Roller - Idler Assy | 1 |
| 5 | RR-4-5 | Retaining Ring | 2 |
| 6 | 175210 | Shaft - Idler | 1 |
| 7 | 175202 | Belt - Conveyor | 1 |
| 8 | SC-41-5 | Cap Screw 1/4-20 x 5/8 Hex | 4 |
| 9 | 175328 | Brace - Conveyor | 1 |
| 10 | 131691 | Collar | 1 |
| 11 | SC-119-81 | Set Screw 5/16-18 x 5/16 Hdls., Cup Pt | 1 |
| 12 | 333934 | Rod | 1 |
| 13 | SC-118-98 | Cap Screw 1/4-20 x 2 Hex | 2 |
| 14 | WL-13-14 | Lock Washer 1/4 Int. Shakeproof | 2 |
| 15 | NS-41-4 | Lock Nut 1/4-20 Hex Eslok | 2 |

CONVEYOR UNIT (Cont.)
(BELT TYPE NON-MOTORIZED)

| ILLUS. PL-20825-1 | PART NO. | NAME OF PART ³⁰ | AMT. |
|----------------------|-------------|-----------------------------------------------------|------|
| 16 | 175209 | Bracket - Take-Up | 2 |
| 17 | SC-118-18 | Cap Screw 1/4-20 x 7/8 Hex | 4 |
| 18 | SC-117-91 | Cap Screw 1/4-20 x 1 Hex | 1 |
| 19 | NS-41-4 | Lock Nut -20 Hex Eslok | 1 |
| 20 | 333111 | Angle - Support | 2 |
| 21 | WL-6-7 | Lock Washer 10 Medium | 4 |
| 22 | SC-118-62 | Mach. Screw 10-32 x 5/16 Phil. Pan Hd | 4 |
| 23 | WL-3-38 | Lock Washer 1/4 Medium | 4 |
| 24 | NS-13-2 | Mach. Nut 1/4-20 Hex | 4 |
| 25 | SC-118-18 | Cap Screw 1/4-20 x 7/8 Hex | 4 |
| 26 | WL-3-38 | Lock Washer 1/4 Medium | 4 |
| 27 | NS-13-2 | Mach. Nut 1/4-20 Hex | 4 |
| 28 | 175330 | Bar - Support | 1 |
| 29 | 175378 | Block - Conveyor Lock Assy | 1 |
| 30 | SC-118-20 | Cap Screw 1/4-20 x 1/2 Hex | 1 |
| 31 | WL-3-38 | Lock Washer 1/4 Medium | 1 |
| 32 | SC-41-86 | Cap Screw 1/4-20 x 3/8 Hex | 1 |
| 33 | WL-3-38 | Lock Washer 1/4 Medium | 1 |
| 34 | 175204 | Block - Bearing Assy. (Incls. items 35 & 36) | 2 |
| 35 | 131144 | Bearing | 2 |
| 36 | 175203 | Block - Bearing | 2 |
| 37 | 175411 | Block - Assy. Pivot (L.H.) (Incls. items 39 & 40) | 1 |
| 38 | SC-116-78 | Set Screw 10-32 x 3/16 Hdls. Cup Pt | 2 |
| 39 | 131144 | Bearing | 1 |
| 40 | 175320 | Block - Bearing | 1 |
| 41 | 175331 | Bracket - Pivot Conveyor | 1 |
| 42 | 175362 | Sprocket - Conveyor | 1 |
| 43 | SC-116-79 | Set Screw 10-32 x 1/4 Hdls. Cup Pt | 2 |
| 44 | 175208 | Roller - Assy. Drive | 1 |
| 45 | SC-47-75 | Set Screw 1/4-20 x 1/4 Hdls. Cup Pt | 2 |
| 46 | RP-4-12 | Roll Pin 1/8 x 1 3/8 | 2 |
| 47 | 175321 | Block - Assy. Pivot (Incls. items 48 & 49) | 1 |
| 48 | 175320 | Block - Bearing | 1 |
| 49 | 131144 | Bearing | 1 |
| 50 | SC-118-16 | Cap Screw 1/4-20 x 1 3/8 Hex Hd | 2 |
| 51 | WS-17-26 | Washer | 2 |
| 52 | WL-3-38 | Lock Washer 1/4 Medium | 2 |
| 53 | NS-13-2 | Mach. Nut 1/4-20 Hex | 2 |
| 54 | 175413 | Roller - Belt Guide | 2 |
| 55 | 175412 | Sleeve - Roller | 2 |
| 56 | 175414 | Bracket - Belt Guide | 2 |
| 57 | SC-66-20 | Mach. Screw 10-32 x 1/2 Phil. Truss Hd | 4 |
| 58 | WL-6-7 | Lock Washer 10 Medium | 4 |
| 59 | NS-11-23 | Mach. Nut 10-32 Hex | 4 |
| 60 | 175347 | Arm - Belt Sealer | 1 |
| 61 | NS-13-25 | Mach. Nut 3/8-16 Hex | 1 |
| 62 | 175404 | Support - Cover Assy | 2 |
| 63 | SC-117-87 | Bolt - Square Neck 1/4-20 x 1 Rd Hd | 1 |
| 64 | NS-13-2 | Mach. Nut 1/4-20 Hex | 1 |
| 65 | WL-3-38 | Lock Washer 1/4 Medium | 1 |
| 66 | NS-13-2 | Mach. Nut 1/4-20 Hex | 1 |
| 67 | 333933 | Tube | 1 |
| 68 | 330757 | Conveyor - Discharge | 1 |
| 69 | SC-118-17 | Cap Screw 1/4-20 x 1 1/4 Hex Hd | 1 |
| 70 | 175327 | Bar - Support | 1 |
| 71 | NS-13-2 | Mach. Nut 1/4-20 Hex | 1 |
| 72 | WL-3-38 | Lock Washer 1/4 Medium | 1 |
| 73 | 334197 | Bracket - Mounting | 1 |
| 74 | WL-3-38 | Lock Washer 1/4 Medium | 1 |
| 75 | SC-118-20 | Cap Screw 1/4-20 x 1/2 Hex Hd | 1 |
| 76 | 175399 | Guard - Chain | 1 |
| 77 | 175361 | Sprocket - Drive (26 Teeth) | 1 |
| 78 | 175364 | Chain - Conveyor Drive | 1 |
| 79 | SC-66-6 | Mach. Screw 10-24 x 1/2 Phil. Truss Hd | 4 |
| 80 | WL-6-7 | Lock Washer 10 Medium | 4 |
| 81 | SC-41-5 | Cap Screw 1/4-20 x 5/8 Hex Hd | 4 |
| 82 | WL-3-38 | Lock Washer 1/4 Medium | 4 |
| 83 | 175326 | Shaft - Drive (Pivot) | 1 |
| 84 | SC-116-78 | Set Screw 10-32 x 3/16 Hdls. Cup Pt | 2 |
| | 175426 | Shaft & Roller Assy. (Incls. items 44, 45, 46 & 47) | 1 |

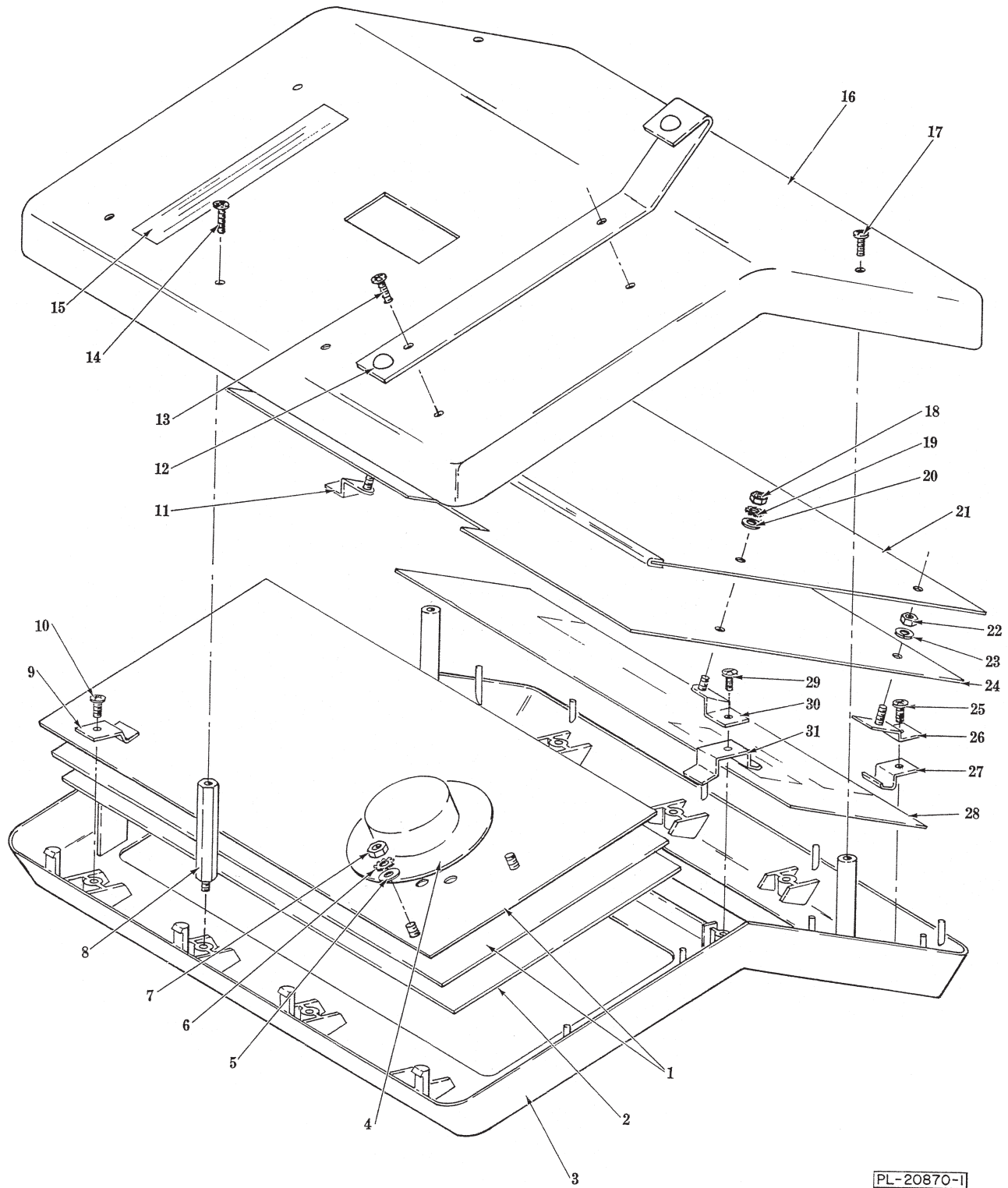


PL-20826-1

CONVEYOR UNIT
(BELT TYPE-MOTORIZED)

**CONVEYOR UNIT
(BELT TYPE-MOTORIZED)**

| ILLUS. PL-20826-1 | PART NO. | NAME OF PART ³⁰ | AMT. |
|----------------------|-------------|---------------------------------------------------------|------|
| 1 | 175229 | Frame - Conveyor | 1 |
| 2 | NS-13-2 | Mach. Nut ¼-20 Hex | 8 |
| 3 | WL-3-38 | Lock Washer ¼ Medium | 8 |
| 4 | 175207 | Roller - Idler Assy | 1 |
| 5 | RR-4-5 | Retaining Ring | 2 |
| 6 | 175210 | Shaft - Idler | 1 |
| 7 | 175202 | Belt - Conveyor | 1 |
| 8 | 175222 | Bracket - Connecting | 1 |
| 9 | SC-41-5 | Cap Screw ¼-20 x 5/8 Hex | 2 |
| 10 | 175328 | Brace - Conveyor | 1 |
| 11 | SC-118-98 | Cap Screw ¼-20 x 2 Hex | 2 |
| 12 | WL-13-14 | Lock Washer ¼ Int. Shakeproof | 2 |
| 13 | NS-41-4 | Lock Nut ¼-20 Hex "Esllok" | 2 |
| 14 | 175209 | Bracket - Take-Up | 2 |
| 15 | WS-17-25 | Washer | 2 |
| 16 | SC-41-5 | Cap Screw ¼-20 x 5/8 Hex | 2 |
| 17 | WL-3-38 | Lock Washer ¼ Medium | 2 |
| 18 | NS-13-2 | Mach. Nut ¼-20 Hex | 2 |
| 19 | WL-6-7 | Lock Washer 10 Medium | 2 |
| 20 | SC-118-62 | Mach. Screw 10-32 x 5/16 Phil. Pan Hd | 2 |
| 21 | 331049 | Cord - Power | 1 |
| 22 | 252620 | Bushing-Strain Relief | 1 |
| 23 | 86736 | Plate - On/Off | 1 |
| 24 | 132639 | Switch - On/Off | 1 |
| 25 | 175231 | Plate - Motor Mtg | 1 |
| 26 | 175367 | Motor | 1 |
| 27 | 175197 | Pulley - Motor (22 Teeth) | 1 |
| 28 | SC-66-6 | Mach. Screw 10-24 x ½ Phil. Truss Hd | 6 |
| 29 | WL-6-7 | Lock Washer 10 Medium | 6 |
| 30 | NS-8-2 | Mach. Nut 10-24 Square | 6 |
| 31 | 130593 | Cover - Motor End | 1 |
| 32 | 334487 | Cover - Motor Side | 1 |
| 33 | SD-8-18 | Self-Tapping Screw 8-18 x 3/8 Phil. Binding Hd., Type B | 5 |
| 34 | SD-8-18 | Self-Tapping Screw 8-18 x 3/8 Phil. Binding Hd., Type B | 2 |
| 35 | 175222 | Bracket - Connecting | 1 |
| 36 | 175402 | Guard - Belt | 1 |
| 37 | SC-66-6 | Mach. Screw 10-24 x ½ Phil. Truss Hd | 2 |
| 38 | WL-6-7 | Lock Washer 10 Medium | 2 |
| 39 | 175196 | Pulley - Drive (15 Teeth) | 1 |
| 40 | 175198 | Belt - Timing | 1 |
| 41 | 175211 | Shaft - Drive | 1 |
| 42 | 175208 | Roller Assy. - Drive | 1 |
| 43 | SC-47-75 | Set Screw ¼-20 x ¼ Soc. Hdls., Cup Pt | 4 |
| 44 | SC-118-16 | Cap Screw ¼-20 x 13/8 Hex Hd | 2 |
| 45 | WS-17-25 | Washer | 2 |
| 46 | WL-3-38 | Lock Washer ¼ Medium | 2 |
| 47 | NS-13-2 | Mach. Nut ¼-20 Hex | 2 |
| 48 | 175413 | Roller - Belt Guide | 2 |
| 49 | 175412 | Sleeve - Roller | 2 |
| 50 | 175414 | Bracket - Belt Guide | 2 |
| 51 | SC-66-20 | Mach. Screw 10-32 x ½ Phil. Truss Hd | 4 |
| 52 | WL-6-7 | Lock Washer 10 Medium | 4 |
| 53 | NS-11-23 | Mach. Nut 10-32 Hex | 4 |
| 54 | 175204 | Block - Bearing Assy. (Incls. items 55 & 56) | 2 |
| 55 | 131144 | Bearing | 2 |
| 56 | 175203 | Block - Bearing | 2 |



PL-20870-I

KEYBOARD UNIT

KEYBOARD UNIT

| ILLUS. PL-20870-1 | PART NO. | NAME OF PART ³⁰ | AMT. |
|----------------------|-------------|------------------------------------------------|------|
| 1 | 256780 | Keyboard Switch | 1 |
| 2 | 175370 | Keyboard - Silkscreened | 1 |
| 3 | 257244 | Cover - Control Panel | 1 |
| 4 | 182823 | Speaker Assy | 1 |
| 5 | WS-23-47 | Washer | 3 |
| 6 | WL-14-3 | Lock Washer 6 Ext. Shakeproof | 3 |
| 7 | NS-9-7 | Mach. Nut 6-32 Hex | 3 |
| 8 | 257473 | Stud - Mounting | 2 |
| 9 | 254644 | Clip - Keyboard | 4 |
| 10 | SC-18-68 | Mach. Screw 4-40 x 1/4 Phil. Pan Hd | 2 |
| 11 | 183209 | Bracket Assy. (R.H.) | 1 |
| 12 | 256602 | Counter Top Leg Assy | 2 |
| 13 | SD-24-38 | Drive Screw 10-24 x 3/8 Phil. Pan Hd., Type TT | 4 |
| 14 | SC-112-90 | Mach. Screw 4-40 x 1 Pan Hd | 2 |
| 15 | 255111 | Label - Interference Warning | 1 |
| 16 | 256739 | Base - Control Panel | 1 |
| 17 | SC-113-10 | Mach. Screw 4-40 x 3/8 Phil. Pan Hd | 2 |
| 18 | NS-9-2 | Mach. Nut 4-40 Hex | 2 |
| 19 | WL-7-39 | Lock Washer 4 Ext. Shakeproof | 2 |
| 20 | Ws-23-40 | Washer | 2 |
| 21 | 183229 | Shield Assy | 1 |
| 22 | NS-9-2 | Mach. Nut 4-40 Hex | 4 |
| 23 | WL-3-3 | Lock Washer 4 Medium | 4 |
| 24 | 259396-2 | Display Board Assy | 1 |
| 25 | SC-18-68 | Mach. Screw 4-40 x 1/4 Phil. Pan Hd | 2 |
| 26 | 183208 | Bracket Assy | 2 |
| 27 | 254646 | Clip - Display Screen | 2 |
| 28 | 175374 | Filter - Display | 1 |
| 29 | SC-18-68 | Mach. Screw 4-40 x 1/4 Phil. Pan Hd | 3 |
| 30 | 183210 | Bracket Assy. (L.H.) | 1 |
| 31 | 254645 | Clip - Center Anchor | 3 |
| | 257117 | Keylock Switch Assy | 1 |
| | 257540-1 | Key - Service | 1 |
| | 257540-15 | Key - Supervisor | 1 |
| | 259486 | Microprocessor (ID #257725-9) | 1 |

CONNECTING CABLES

| | | |
|-----------|----------------------------------------------------------|---|
| 257229-2 | Interconnect Cable Assy. (2 Ft. Long) (Keyboard to HPA) | 1 |
| 257229-6 | Interconnect Cable Assy. (6 Ft. Long) (Keyboard to HPA) | 1 |
| 257229-8 | Interconnect Cable Assy. (8 Ft. Long) (Keyboard to HPA) | 1 |
| 257229-17 | Interconnect Cable Assy. (17 Ft. Long) (Keyboard to HPA) | 1 |
| 257229-25 | Interconnect Cable Assy. (25 Ft. Long) (Keyboard to HPA) | 1 |

