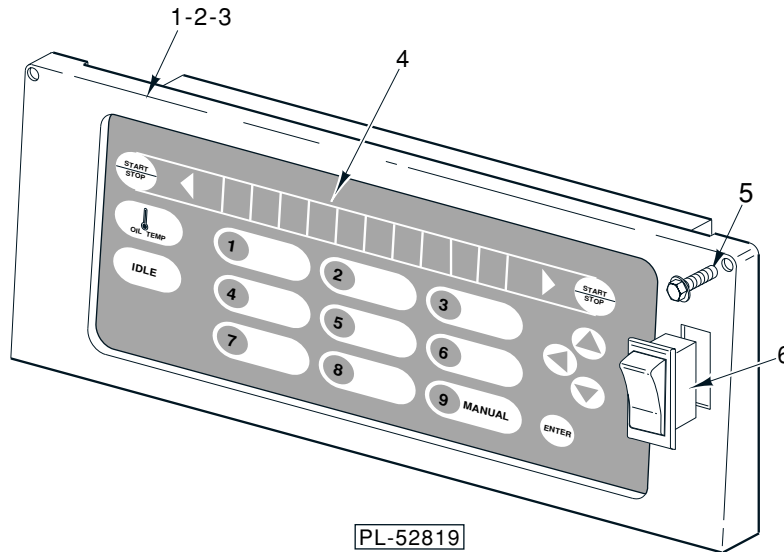




CATALOG OF REPLACEMENT PARTS

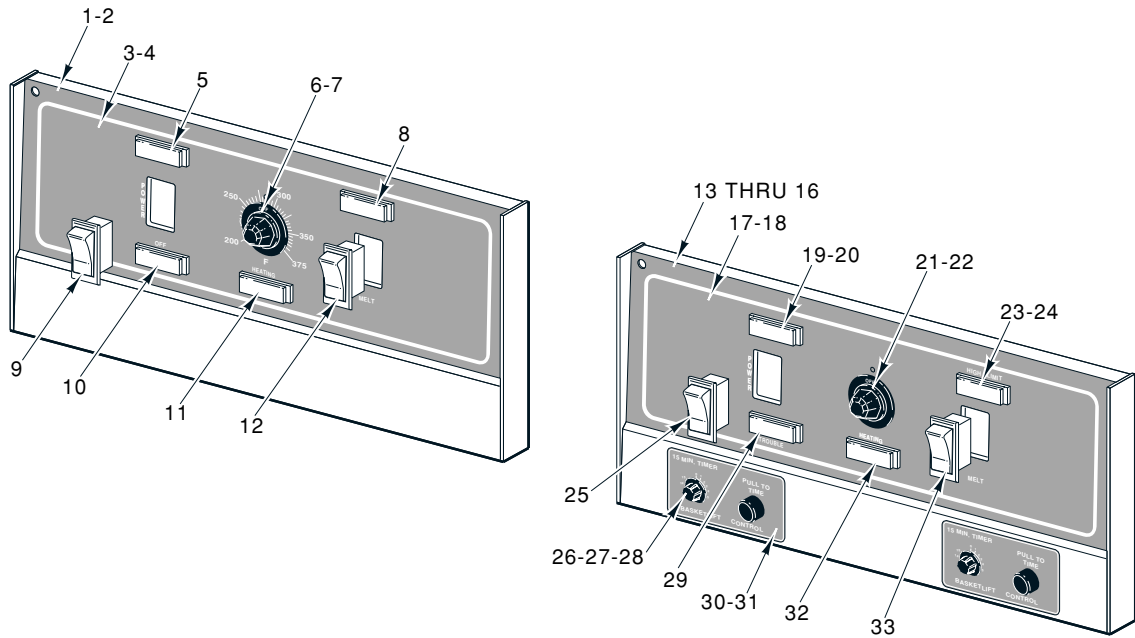
HFD/HFC SERIES FRYERS

HFD40	ML-114624
HFD50	ML-114625
HFD225	ML-114626
HFD85	ML-114627
HFC40	ML-114628
HFC50	ML-114629
HFC225	ML-114630
HFC85	ML-114631
HFO15	ML-114632
HFO21	ML-114633



CONTROL PANEL HFC SERIES

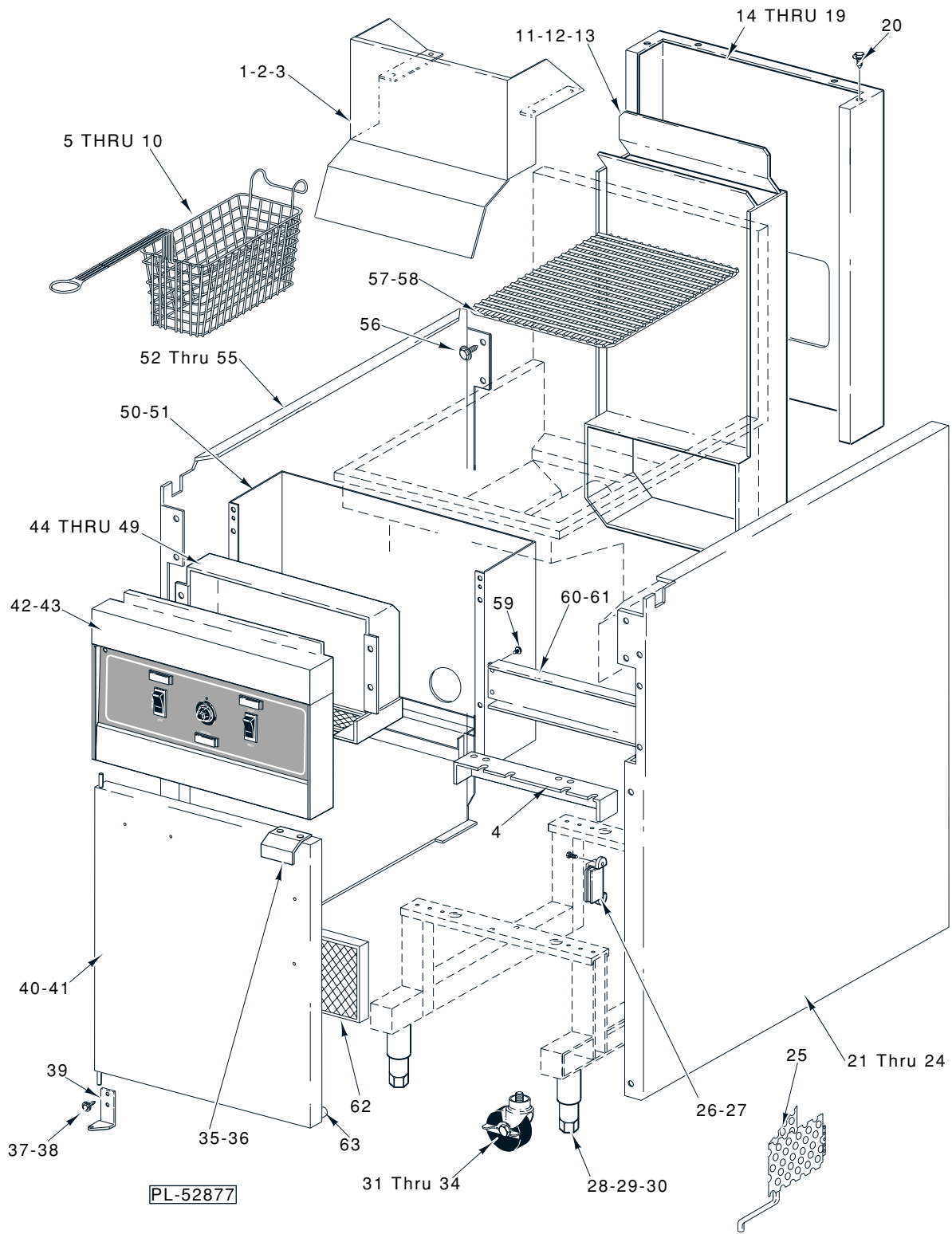
ILLUS. PL-52819	PART NO.	NAME OF PART	AMT.
1	00-419385-000G1	Control Panel Frame (HFC40/50)	1
2	00-419386-000G1	Control Panel Frame (HFC85)	1
3	00-419385-000G2	Control Panel Frame (HFC225)	1
4	00-419557-00002	Board & Panel Assy.	1
5	NS-046-89	Nut Assy. 6-32 Hex "KEPS"	6
6	00-411496-000B1	Switch - Rocker	1



PL-52820

**CONTROL PANEL
HFD SERIES**

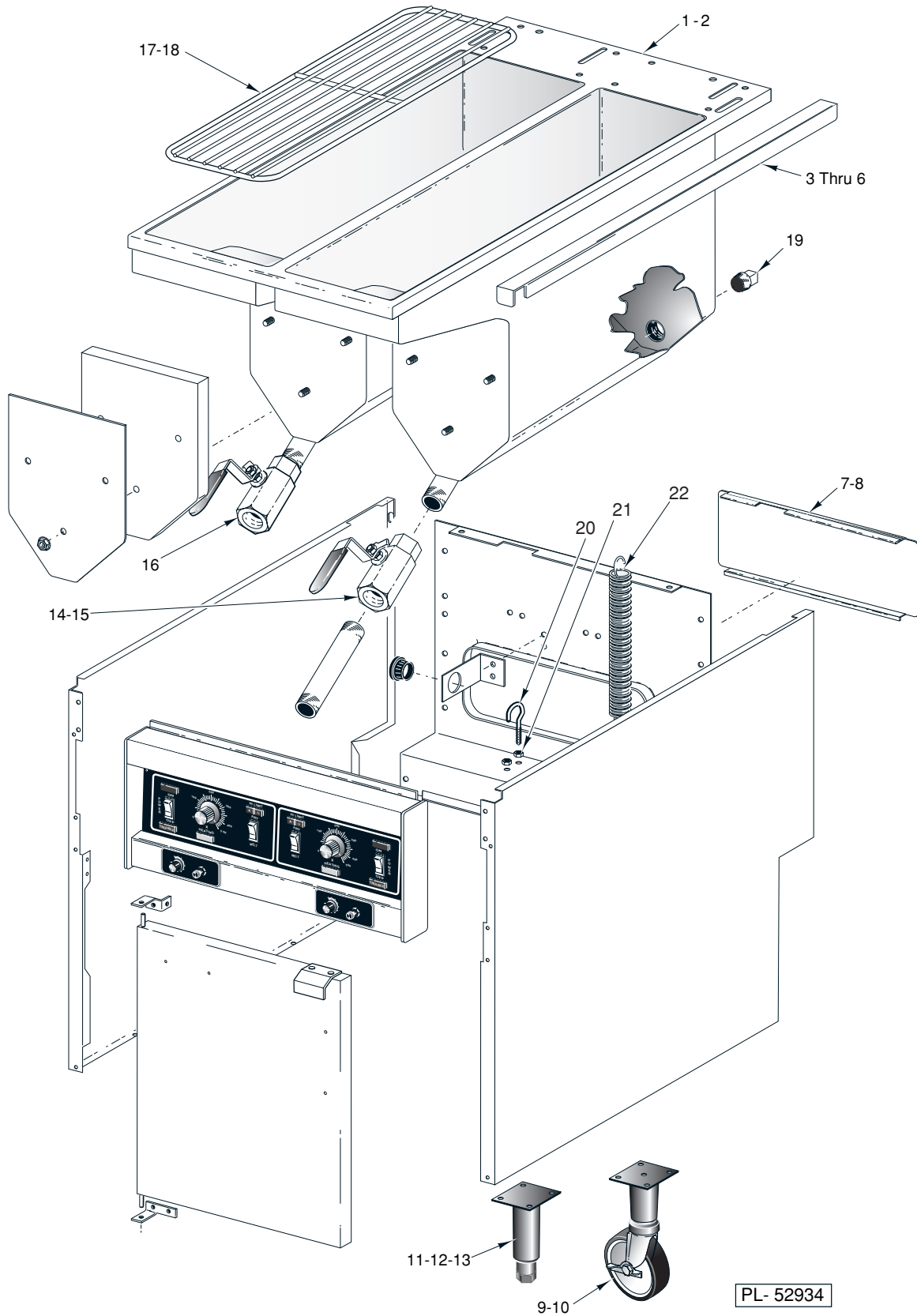
ILLUS. PL-52820	PART NO.	NAME OF PART	AMT.
	1	Control Panel (Complete)(HFD40/50)	1
	2	Control Panel (Complete)(HFD85)	1
	3	00-418387-00002 Overlay - Control Panel (HFD40/50)	1
	4	00-418388-00002 Overlay - Control Panel (HFD85)	1
	5	00-411496-000E4 Light - Hot Top	1
	6	00-414254-00001 Knob - Thermostat	1
	7	00-415638-000G1 Potentiometer	1
	8	00-411496-000E7 Light - Indicator (Red)	1
	9	00-411496-000B7 Switch - Rocker	1
	10	00-411496-000E6 Light - Indicator (Trouble)	1
	11	00-411496-000E3 Indicator Light (Amber)	1
	12	00-411496-000B7 Switch - Rocker	1
	13	00-418407-000G5 Control Panel Assy. (Complete)(1 Basketlift)(HFD40/50)	1
	14	00-418407-000G6 Control Panel Assy. (Complete)(2 Basketlift)(HFD40/50)	1
	15	00-418408-000G5 Control Panel Assy. (Complete)(1 Basketlift)(HFD85)	1
	16	00-418408-000G6 Control Panel Assy. (Complete)(2 Basketlift)(HFD85)	1
	17	00-418387-00002 Overlay - Control Panel (HFD40/50)	1
	18	00-418388-00002 Overlay - Control Panel (HFD85)	1
	19	00-411496-000E3 Indicator Light (Amber)	1
	20	00-411496-000E7 Light - Indicator (Red)	1
	21	00-414254-00001 Knob - Thermostat	1
	22	00-415638-000G1 Potentiometer	1
	23	00-411496-000E7 Light - Indicator (Red)	1
	24	00-411496-000E4 Light - Hot Top	1
	25	00-411496-000B1 Switch - Rocker	1
	26	00-415254-00002 Timer - Basketlift (Solid State)	AR
	27	00-415254-00003 Timer (7 Min.)	1
	28	00-415269-00001 Knob - Basketlift Timer	1
	29	00-411496-000E6 Light - Indicator (Trouble)	1
	30	00-415255-00005 Overlay - Basketlift (7.5 Min.)	AR
	31	00-415255-00004 Label - Basket Lift (15 Minutes)	AR
	32	00-411496-000E3 Indicator Light (Amber)	1
	33	00-411496-000B1 Switch - Rocker	1
		00-415144-00012 Board - Temperature	1



BODY UNIT

BODY UNIT

ILLUS. PL-52877	PART NO.	NAME OF PART	AMT.
1	00-421831-00001	Hanger - Basket (HFC85/HFD85)	1
2	00-421912-000G1	Hanger - Basket (HFC85/HFD85)	1
3	00-421911-000G1	Hanger - Basket (HFC40/50/HFD40/50)	1
4	00-421897-00001	Bracket - Power Supply Mounting	1
5	00-410737-00009	Basket - Twin (Black Handle)(HFC40/50/225/HFD40/50/225)	AR
6	00-422868-00002	Basket - Twin (HFC85/HFD85)	AR
7	00-422870-00002	Basket - Triple (HFC85/HFD85)	AR
8	00-422914-00002	Basket - Triple (Black Handle)(HFC40/50/HFD40/50)	AR
9	00-422869-00001	Basket - Single (HFC85/HFD85)	AR
10	00-411378-00002	Basket - Single (HFC40/50/HFD40/50)	AR
11	00-416994-000G2	Flue Assy. (3 Tube)	1
12	00-418201-000G1	Flue Box Assy. (4 Tube)	1
13	00-418205-000G1	Flue Assy. (5 Tube)	1
14	00-422020-000G1	Flue Wrap (Steel)(HFC40/50/225/HFD40/50/225)	1
15	00-422020-000G2	Flue Wrap (SST)(HFC40/50/225/HFD40/50/225)	1
16	00-422020-000G3	Flue Wrap (Steel)(HFC85/HFD85)	1
17	00-422020-000G4	Flue Wrap (SST)(HFC85/HFD85)	1
18	00-422021-00001	Wrap - Flue (PTD)(Use on units without Basketlifts)	1
19	00-422021-00002	Wrap - Flue (SST)(HFO15/HFC40/50/225/HFD40/50/225)	1
20	SD-036-96	Self-Tapping Screw 8-18 x ¾ Hex Hd., Type AB	2
21	00-420596-00002	Body - Side (PTD)(R.H.)	1
22	00-420596-00004	Body - Side (SST)(R.H.)	1
23	00-419777-00002	Body - Side (PTD)(R.H.)	1
24	00-419777-00004	Body - Side (SST)(R.H.)	1
25	00-419871-00001	Baffle	1
26	00-408834-00001	Magnet - Door	1
27	SD-036-80	Self-Tapping Screw 8-32 x ¾ Hex Washer Hd., Type TT	2
28	00-413112-00007	Leg (6¼) (SST)	4
29	00-413112-00009	Legs (6")(Stainless Steel)	4
30	00-413112-00010	Base Plate - Leg	4
31	00-418906-00001	Caster - Adjustable "Rigid"	2
32	00-418907-00001	Caster - Adjustable "Swivel"	2
33	00-421893-00002	Caster W/O Brake (4")	2
34	00-421893-00001	Caster - Swivel W/Brake (4" Dia.)	2
35	00-419653	Handle	1
36	RS-033-02	Pop Rivet (.187)	4
37	SD-032-07	Self-Tapping Screw 10-24 x ½ Hex Washer Hd., Type TT	2
38	NS-044-09	Nut Assy. 10-24 Hex Keps	2
39	00-425219-00001	Hinge - Lower Door	1
40	00-418327-000G2	Door Assy.	1
41	00-418327-000G4	Door - Assy. (SST) (Give Model No. & Serial No.) (RC5, RD5 & RS5)	1
42	NS-047-79	Palnut ¾	2
43	00-417700-00003	Nameplate 4"	1
44	00-416535-00004	Relay S.P.D.T. 24 V. Coil (Elect. Ignition)(Located on rear of panel)	1
45	00-415144-00012	Board - Temperature (HFD Series)	1
46	00-422737-00001	Probe - Thermistor (HFC85)	1
47	00-422737-00002	Probe - Thermistor (HFC40/50/225)	1
48	00-414142-00002	Probe - Thermistor (HFD Series)	1
49	00-414142-00001	Probe - Thermistor (HFD Series)	AR
50	00-422838-000G1	Heat Shield (HFC40/50/225/HFD40/50/225)	1
51	00-422838-000G2	Heat Shield (HFC85/HFD85)	1
52	00-420596-00001	Body - Side (PTD)(L.H.)	1
53	00-420596-00003	Body - Side (SST)(L.H.)	1
54	00-419777-00001	Body - Side (PTD)(L.H.)	1
55	00-419777-00003	Body - Side (SST)(L.H.)	1
56	SD-036-03	Self-Tapping Screw 8-18 x ¾ Hex Washer Hd., Type AB	8
57	00-420613-00002	Screen - Drain (13½")	1
58	00-420613-00001	Screen - Drain (19")	1
59	SD-032-07	Self-Tapping Screw 10-24 x ½ Hex Washer Hd., Type TT	10
60	00-417014-00001	Bracket - Rear Support (HFO15/HFC40/50/225/HFD40/50/225)	1
61	00-418320-00001	Bracket - Rear Support (HFO21/HFC85/HFD85)	1
62	00-416969-00001	Panel - Honeycomb (6 x 6)	1
63	00-420769-00001	Bumper - Rubber	1

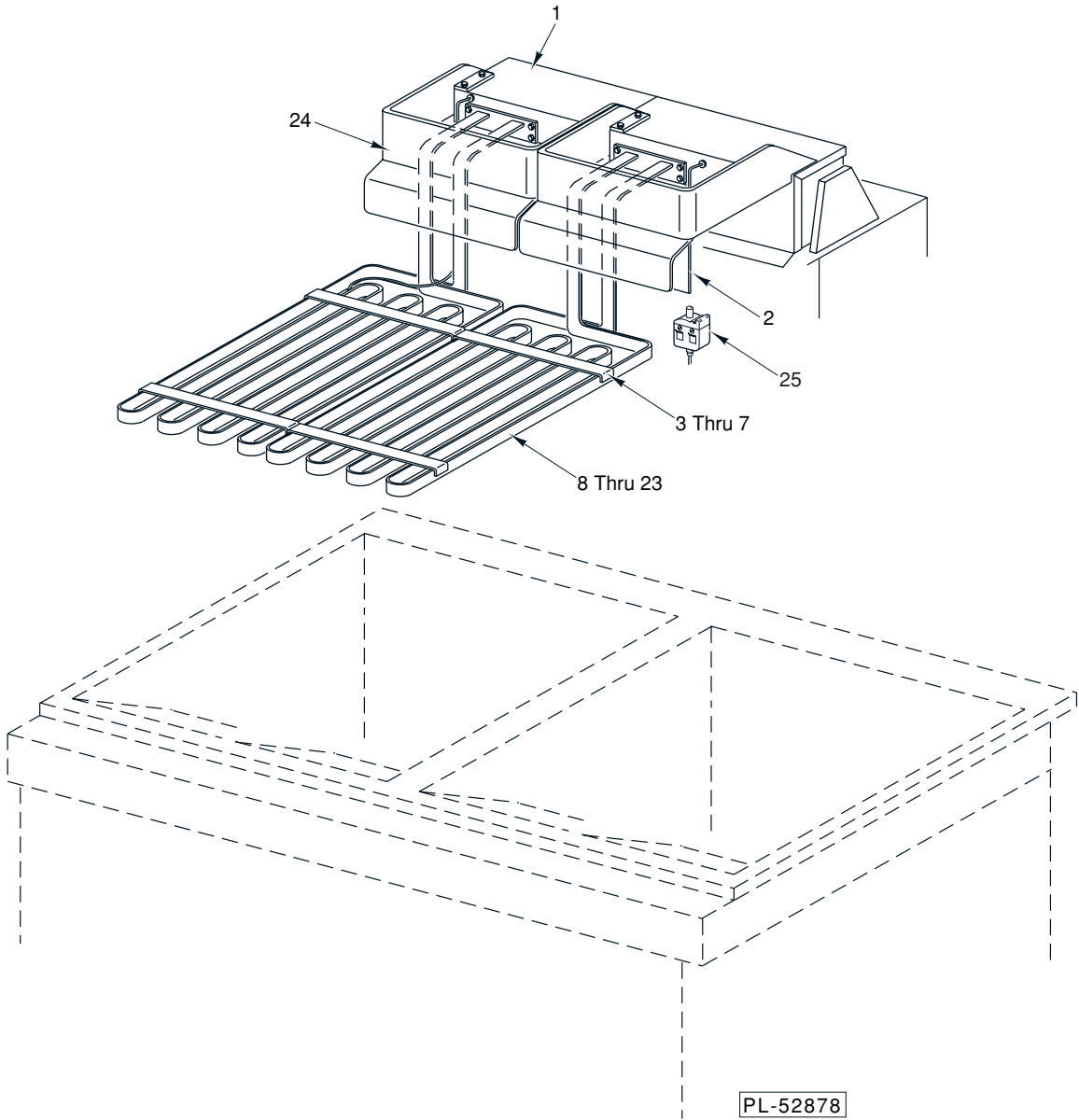


PL- 52934

PANELS & DOORS

PANELS & DOORS

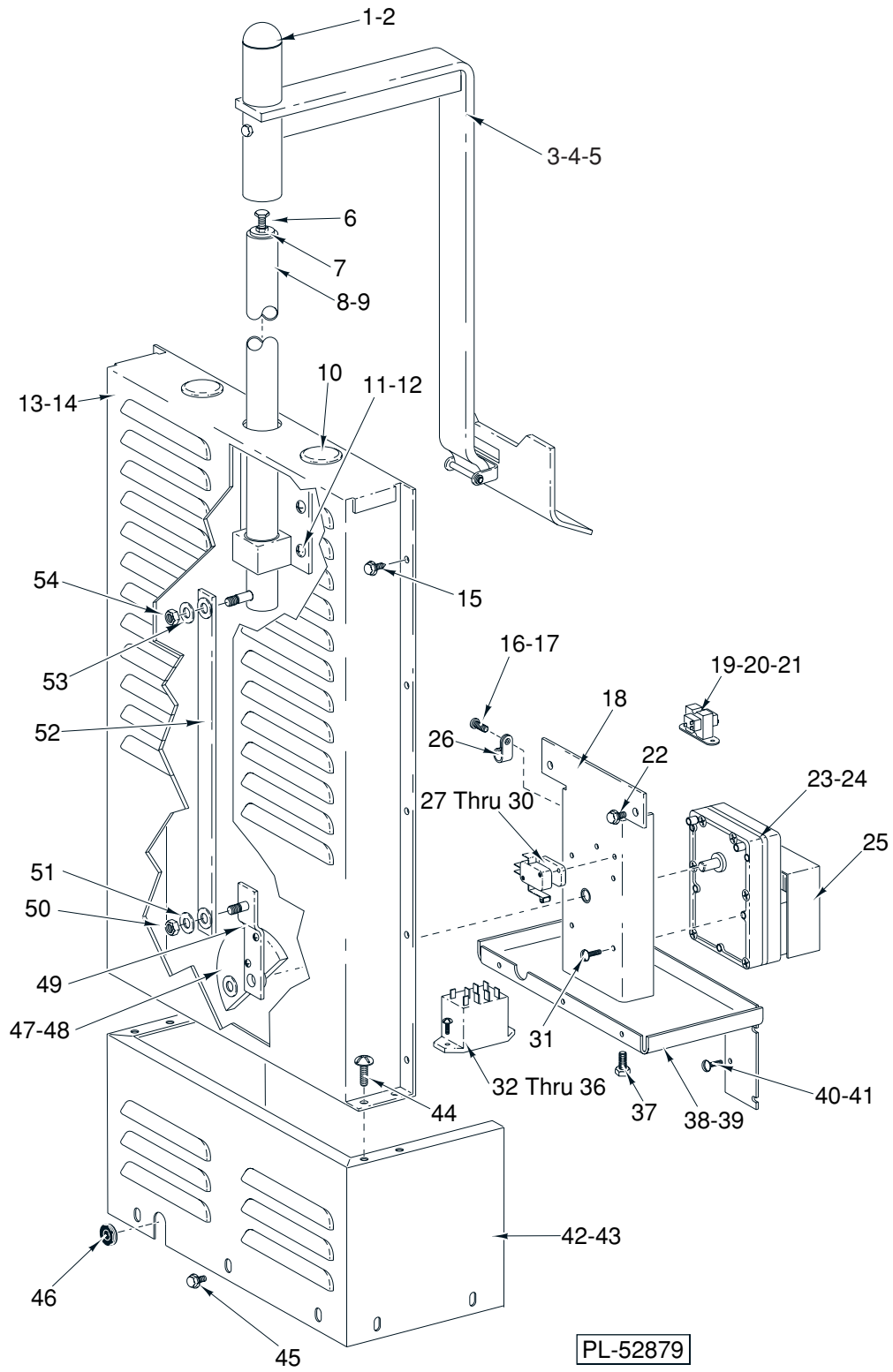
ILLUS. PL-52934	PART NO.	NAME OF PART	AMT.
1	00-421844-000G1	Tank Assy. (HFC50/HFD50)	1
2	00-421842-000G1	Tank Assy. (HFC85/HFD85)	1
3	00-414460-00001	Strip - Grease Protector (HFC40/50/225/HFD40/50/225)	1
4	00-414460-00002	Strip - Grease Protector (Spec)(HFC85/HFD85)	1
5	00-414460-00003	Strip - Grease Protector (Spec)(HFO15)	1
6	00-414460-00004	Strip - Grease Protector (Spec)(HFO15)	1
7	00-414345-00001	Door - Rear	1
8	00-414345-00003	Door - Rear (PTD)	1
9	00-421893-00002	Caster W/O Brake (4")	2
10	00-421893-00001	Caster - Swivel W/Brake (4" Dia.)	2
11	00-413112-00007	Leg (6¼) (SST)	4
12	00-413112-00009	Legs (6")(Stainless Steel)	4
13	00-413112-00010	Base Plate - Leg	4
14	00-414212-00003	Valve - Ball (R.H.)(HFC225/HFD225)	1
15	00-414212-00004	Valve - Ball (L.H.)(HFC40/50/225/HFD40/50/225)	1
16	00-414212-00006	Valve - Ball 1¼ Bal(HFC85/HFD85)	1
17	00-414214-00001	Wire Rack (HFC225/HFD225)	2
18	00-414214-00002	Wire Rack (HFC40/50/HFD40/50)	1
19	FP-028-14	Plug - Pipe ½ Sq. Hd.	AR
20	00-402570-00003	Eye Bolt	AR
21	NS-046-50	Mach. Nut 6-32 Hex Stl.	AR
22	00-406363-00001	Spring - Door (Long)	AR



HEATING ELEMENT ASSEMBLY

HEATING ELEMENT ASSEMBLY

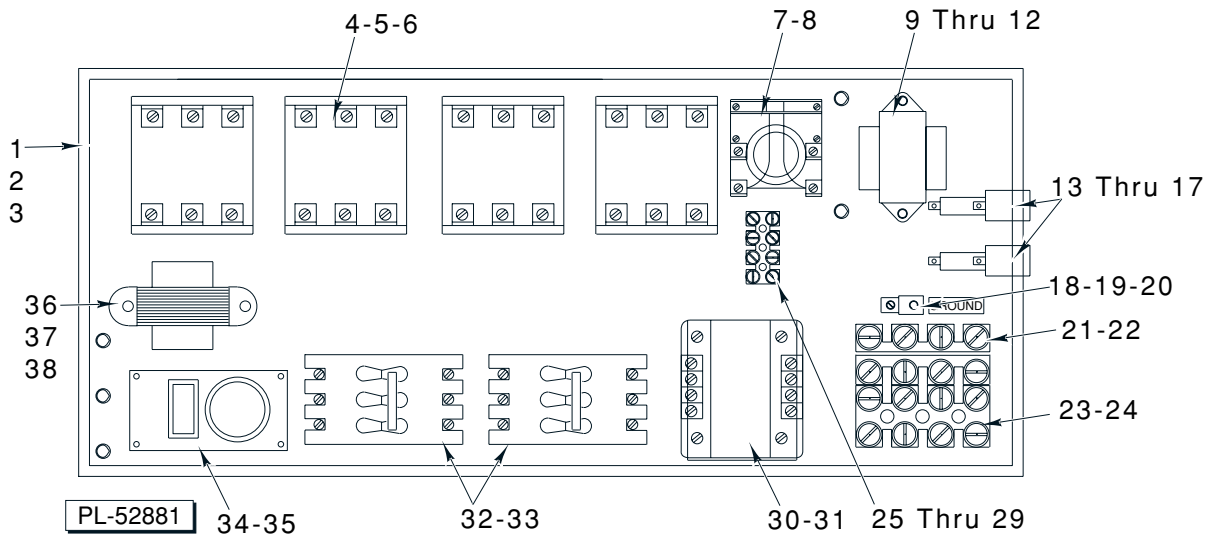
ILLUS. PL-52878	PART NO.	NAME OF PART	AMT.
1	00-422321-000G1	Element Head Assy. (HFC225/HFD225)	1
2	00-416782-00001	Bracket - Hi - Limit	AR
3	00-422727-00001	Clamp - Element Top (HFC50/225/HFD50/225)	1
4	00-422727-00002	Clamp - Element Bottom (HFC50/225/HFD50/225)	2
5	00-422727-00002	Clamp - Lower (HFC85/HFD85)	1
6	00-422381-000G1	Clamp - Top Element Assy. (HFC85/HFD85)	4
7	00-421916-000G1	Top Clamp Assy. (HFC50/225/HFD50/225)	4
8	00-416741-000G5	Element Assy. (208/7000KW)(HFC40/50/225/HFD40/50/225)	2
9	00-416741-000G6	Element Assy. (220/7000KW)(HFC40/50/225/HFD40/50/225)	2
10	00-416741-000G7	Element Assy. (240/7000KW)(HFC40/50/225/HFD40/50/225)	2
11	00-416741-000G8	Element Assy. (480/7000KW)(HFC40/50/225)	2
12	00-416741-000G9	Element Assy. (208/8500KW)(HFC40/50/225/HFD40/50/225)	2
13	00-416741-000G10	Element Assy. (220/8500KW)(HFC40/50/225/HFD40/50/225)	2
14	00-416741-000G11	Element Assy. (240/8500KW)(HFC40/50/225/HFD40/50/225)	2
15	00-416741-000G12	Element Assy. (480/8500KW)(HFC40/50/225/HFD40/50/225)	2
16	00-416741-000G13	Element Assy. (208/10500KW)(HFC50/225/HFD/50/225)	2
17	00-416741-000G14	Element Assy. (220/10500KW)(HFC50/225)	2
18	00-416741-000G15	Element Assy. (240/10500KW)(HFC50/225/HFD50/225)	2
19	00-416741-000G16	Element Assy. (480/10500KW)(HFC50/225/HFD50/225)	2
20	00-421892-000G1	Element Assy. (208/12000KW)(HFC85/HFD85)	2
21	00-421892-000G2	Element Assy. (220/12000KW)(HFC85/HFD85)	2
22	00-421892-000G3	Element Assy. (240/12000KW)(HFC85/HFD85)	2
23	00-421892-000G4	Element Assy. (480/12000KW)(HFC85/HFD85)	2
24	00-422416-00001	Hanger - Basket (HFC40/50/225/HFD40/50/225)	2
25	00-414146-00002	Thermostat Hi-Limit	1



BASKETLIFT COMPONENTS

BASKETLIFT COMPONENTS

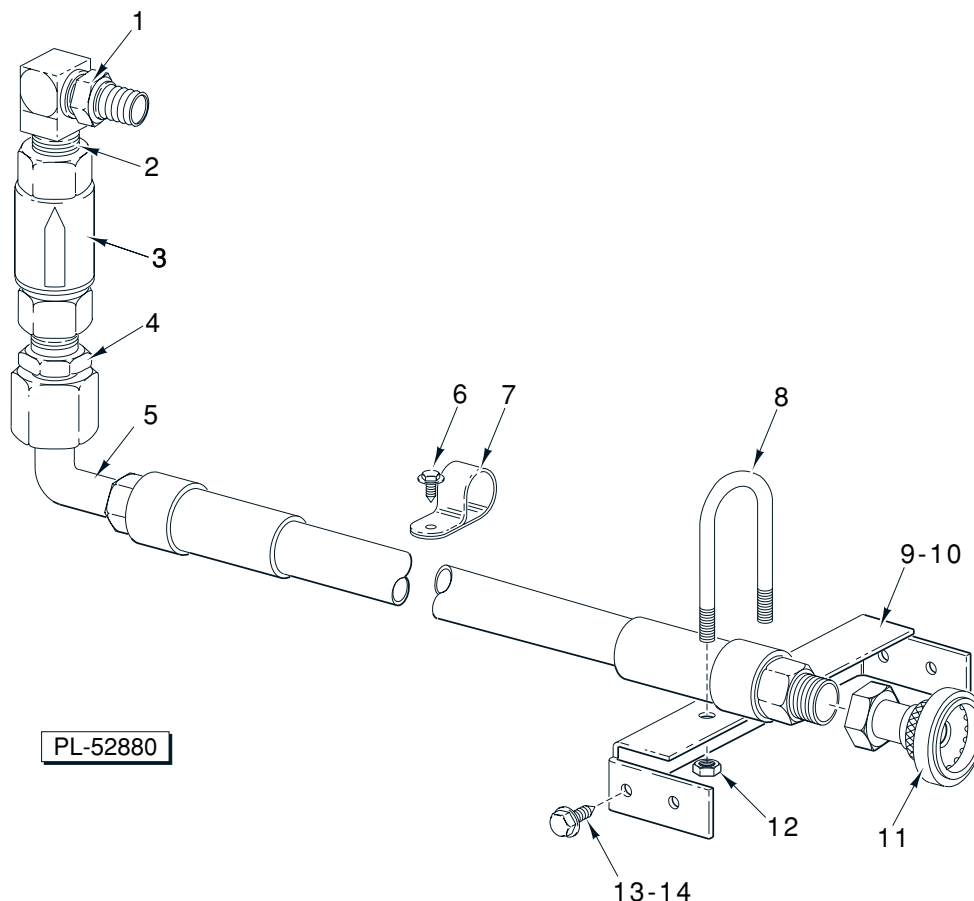
ILLUS. PL-52879	PART NO.	NAME OF PART	AMT.
1	00-423374-00001	Cap - Rod End	1
2	SC-047-35	Set Screw 5/16-18 x 1/2 Hdls, Cup Pt	1
3	00-422495-000G1	Lift Assy. (HFC40/50/225/HFD40/50/225)	1
4	00-422495-000G2	Lift Assy. (HFC85/HFD85)	1
5	00-422495-000G3	Lift Assy. (HFC40/50/HFD40/50)	1
6	00-418118-00001	Bolt - Adjusting	1
7	NS-018-01	Jam Nut 1/4-20 Hex	1
8	00-418479-000G2	Tube - Basketlift (HFC40/50/225/HFD40/50/85/225)	1
9	00-423262-000G1	Tube - Basketlift (HFC40/50/85/225/HFD40/50/85/225)	1
10	PB-004-04	Plug Button (1 1/4)	2
11	SD-032-07	Self-Tapping Screw 10-24 x 1/2 Hex Washer Hd., Type TT	6
12	00-422247-000G1	Bearing Support Assy.	1
13	00-422017-00001	Wrap - Top (HFC40/50/HFD40/50)	1
14	00-422018-00001	Wrap - Top (HFC85/HFD85)	1
15	SD-036-03	Self-Tapping Screw 8-18 x 3/8 Hex Washer Hd., Type AB	10
16	SC-109-10	Mach. Screw 6-32 x 3/8 Pan Hd.	1
17	NS-009-07	Mach. Nut 6-32 Hex	1
18	00-418123-000G1	Plate - Motor	1
19	00-411500-00012	Transformer (120 V., A.C., 28 V., 20 VA)	AR
20	00-411500-00013	Transformer (200-240 V.A.C., 28 V., 20 VA)	AR
21	SD-032-07	Self-Tapping Screw 10-24 x 1/2 Hex Washer Hd., Type TT	2
22	SD-037-80	Self-Tapping Screw 10-24 x 1/2 Hex Washer Hd., Type TT	6
23	00-418156-00001	Gear Motor (115V.,60 Hz.)	1
24	00-418156-00002	Gear Motor (208V)	1
25	00-418517-00001	Shroud - Motor	1
26	00-078752-00012	Clamp - Cable	1
27	00-418159-00001	Block - Cam Switch	1
28	00-411496-000F3	Switch - Micro	1
29	SC-112-90	Mach. Screw 4-40 x 1 Pan Hd.	2
30	NS-009-12	Mach. Nut 8-32 Hex	2
31	SC-018-47	Mach. Screw 10-32 x 3/4 Pan Hd.	4
32	00-416535-00004	Relay S.P.D.T. 24 V. Coil (Elect. Ignition)(Located on rear of panel)	1
33	00-416535-00006	Switch - Relay (HFC Series)	AR
34	00-416535-00007	Switch - Relay (240V)(HFC Series)	AR
35	SC-109-10	Mach. Screw 6-32 x 3/8 Pan Hd.	2
36	NS-009-07	Mach. Nut 6-32 Hex	2
37	SD-037-80	Self-Tapping Screw 10-24 x 1/2 Hex Washer Hd., Type TT	2
38	00-422730-00001	Base - Motor Mounting (HFC85/HFD85)	1
39	00-422729-00001	Base - Motor Mounting (HFC40/50/225/HFD40/50/225)	1
40	SC-037-80	Cap Screw 10-24 x 1/2 Hex Hd.	2
41	SD-032-07	Self-Tapping Screw 10-24 x 1/2 Hex Washer Hd., Type TT	2
42	00-418480-00001	Wrap - Bottom	1
43	00-418510-00001	Wrap - Bottom (RC5, RD5 & RS5)	1
44	SD-036-03	Self-Tapping Screw 8-18 x 3/8 Hex Washer Hd., Type AB	14
45	SC-037-80	Cap Screw 10-24 x 1/2 Hex Hd.	2
46	00-418482-00001	Grommet	1
47	00-418475-000G1	Crank-Arm Assy.	1
48	SC-055-02	Set Screw 1/4-20 x 1/4 Hdls., Cup Pt.	2
49	SD-015-41	Self-Tapping Screw 8-32 x 1/2 Phil. Pan Hd., "Taptite"	2
50	NS-047-73	Lock Nut 5/16-18 Hex	1
51	WS-004-33	Washer	1
52	00-418477-000G2	Coupler Assy.	1
53	WS-004-33	Washer	1
54	NS-047-73	Lock Nut 5/16-18 Hex	1



POWER SUPPLY BOX

POWER SUPPLY BOX

ILLUS. PL-52881	PART NO.	NAME OF PART	AMT.
1	00-421896-00001	Box - Power Supply	1
2	00-421895-00001	Cover - Box	1
3	SD-036-96	Self-Tapping Screw 8-18 x 3/4 Hex Hd., Type AB	2
4	00-411497-000C5	Contactactor 3 pole	4
5	00-411497-000C3	Contactactor 3 Pole, 40A, 120V	4
6	SD-036-96	Self-Tapping Screw 8-18 x 3/4 Hex Hd., Type AB	8
7	00-411497-000A3	Relay S.P.D.T., 24V.	1
8	SD-036-96	Self-Tapping Screw 8-18 x 3/4 Hex Hd., Type AB	4
9	00-411500-00012	Transformer (120 V., A.C., 28 V., 20 VA)	1
10	00-411500-00013	Transformer (200-240 V.A.C., 28 V., 20 VA)	1
11	00-419572-000G2	Transformer 12V	1
12	SD-036-96	Self-Tapping Screw 8-18 x 3/4 Hex Hd., Type AB	2
13	FE-023-55	Holder - Fuse (300 V., 15A)	AR
14	FE-019-40	Fuse 300V, 15A	AR
15	SC-021-10	Mach. Screw 6-32 x 1/2 Rd. Hd.	AR
16	WL-004-40	Lockwasher 10 Medium	AR
17	NS-009-07	Mach. Nut 6-32 Hex	AR
18	00-417856-00001	Lug - Grounding (With Set Screw)	1
19	SD-032-07	Self-Tapping Screw 10-24 x 1/2 Hex Washer Hd., Type TT	1
20	WL-004-40	Lockwasher 10 Medium	1
21	00-410472-00009	Block - Terminal (208/240 V.)	1
22	SD-036-96	Self-Tapping Screw 8-18 x 3/4 Hex Hd., Type AB	2
23	00-410472-00008	Terminal Block	1
24	SD-036-96	Self-Tapping Screw 8-18 x 3/4 Hex Hd., Type AB	AR
25	00-414208-00001	Terminal Barrier	1
26	00-414208-00002	Barrier - Terminal	1
27	SC-119-90	Mach. Screw 6-32 x 1 Pan Hd.	2
28	NS-009-07	Mach. Nut 6-32 Hex	2
29	WL-004-40	Lockwasher 10 Medium	2
30	00-411500-00006	Transformer (480V.)	1
31	SD-036-03	Self-Tapping Screw 8-18 x 3/8 Hex Washer Hd., Type AB	4
32	00-411501-00014	Circuit Breaker	2
33	SD-036-96	Self-Tapping Screw 8-18 x 3/4 Hex Hd., Type AB	4
34	00-419574-000G1	Power Supply Board Assy.	1
35	NS-046-89	Nut Assy. 6-32 Hex "KEPS"	4
36	00-411500-00013	Transformer (200-240 V.A.C., 28 V., 20 VA)	1
37	SD-036-03	Self-Tapping Screw 8-18 x 3/8 Hex Washer Hd., Type AB	1
38	00-419572-000G1	Transformer 12 V. (RC3, 4 & 5)	2
	FE-002-45	Connector - Conduit 1/2 TS (2 Screws Included)	1
	00-422356-00001	Stand - Contactactor	2
	00-421363-00003	Cord - Power	1
	00-419319	Power Cord (Filter)	2
	00-419315	Power Cord	1
	00-419967-00005	Power Supply Cord	1
	00-419557-00002	Board & Panel Assy.	1
	00-415144-00011	Board - Temperature	1



**OIL RETURN
STAND ALONE**

ILLUS. PL-52880	PART NO.	NAME OF PART	AMT.
1	00-419251-00001	Elbow - ½ NPTF Male Swivel	1
2	FP-035-91	Pipe ½ x 1⅝ T.B.E.	1
3	00-418786-00001	Valve - Check (Ball Cone)	1
4	00-419211-00001	Adapter (Pipe to Flare)	1
5	00-418966-00001	Oil Return Line	1
6	SD-032-07	Self-Tapping Screw 10-24 x ½ Hex Washer Hd., Type TT	2
7	00-078752-00003	Clamp - Cable	2
8	00-521820	"U" Bolt ¼-20	1
9	00-420588-000G1	Bracket - Oil Return (HFC40/50/85/225/HFD40/50/85/225)	1
10	00-418359-00001	Bracket - Oil Return (HFC40/50/85/225/HFD40/50/85/225)	1
11	00-418791-000G1	Quick Disconnect Assy.	1
12	NS-044-14	Nut - ¼-20 Hex "Keps"	2
13	SD-032-07	Self-Tapping Screw 10-24 x ½ Hex Washer Hd., Type TT	4
14	NS-044-09	Nut Assy. 10-24 Hex Keps	4

ACCESSORIES

ILLUS. PL-52882	PART NO.	NAME OF PART	AMT.
	00-418783-00010	Fitting - Swivel Straight	1
	00-418783-00005	Hose - Flex 1/2" I.D. x 5/8" O.D. x 28" Lg.....	1
	00-418783-00009	Hose - Flex	1
	00-414848-000G2	Vat Cover Assy. (HFD40/50/HFC40/50)	3
	00-418358-000G1	Vat Cover Assy. (HFD85/HFC85)	3
	00-414848-000G1	Vat Cover Assy. (HFD225/HFC225)	3
	00-418346-00002	Cord - Electrical 120V.	1
	00-078752-00003	Clamp - Cable	1
	00-419319	Power Cord (Filter)	1

