



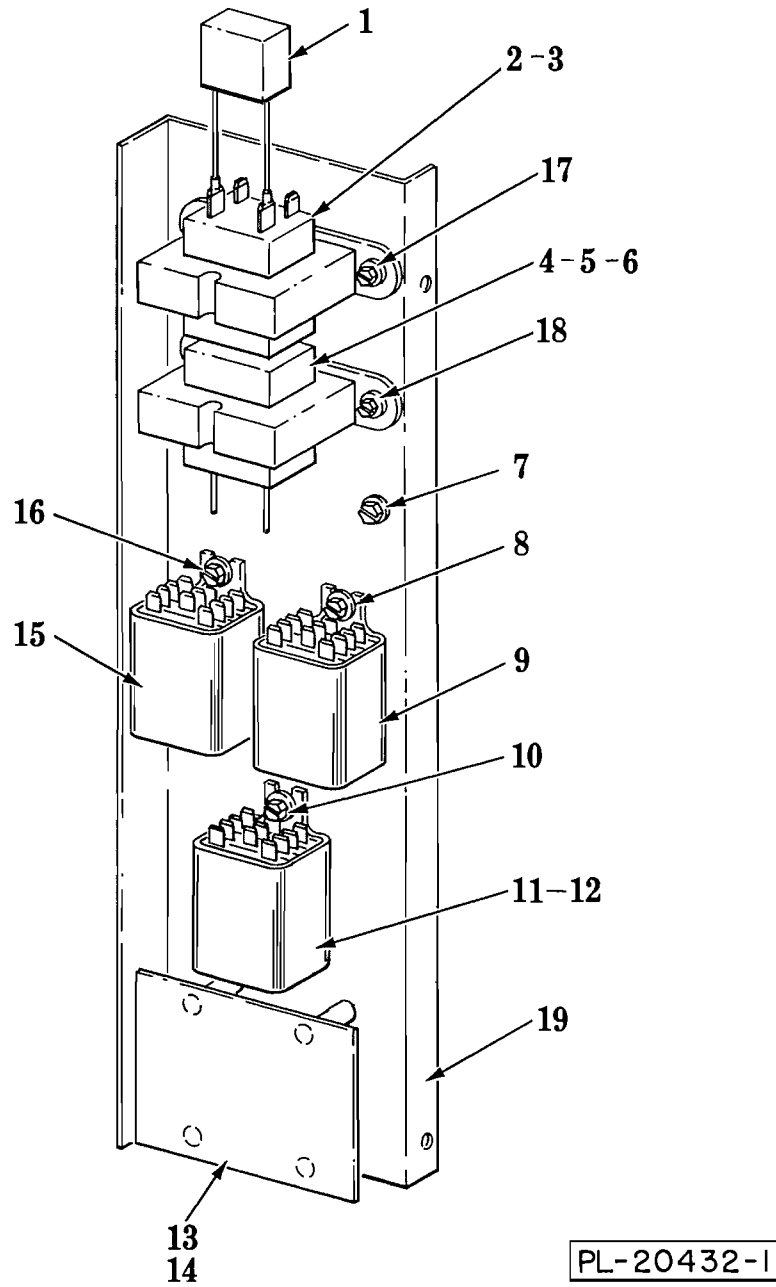
CATALOG OF REPLACEMENT PARTS

GAS CONVECTION OVENS

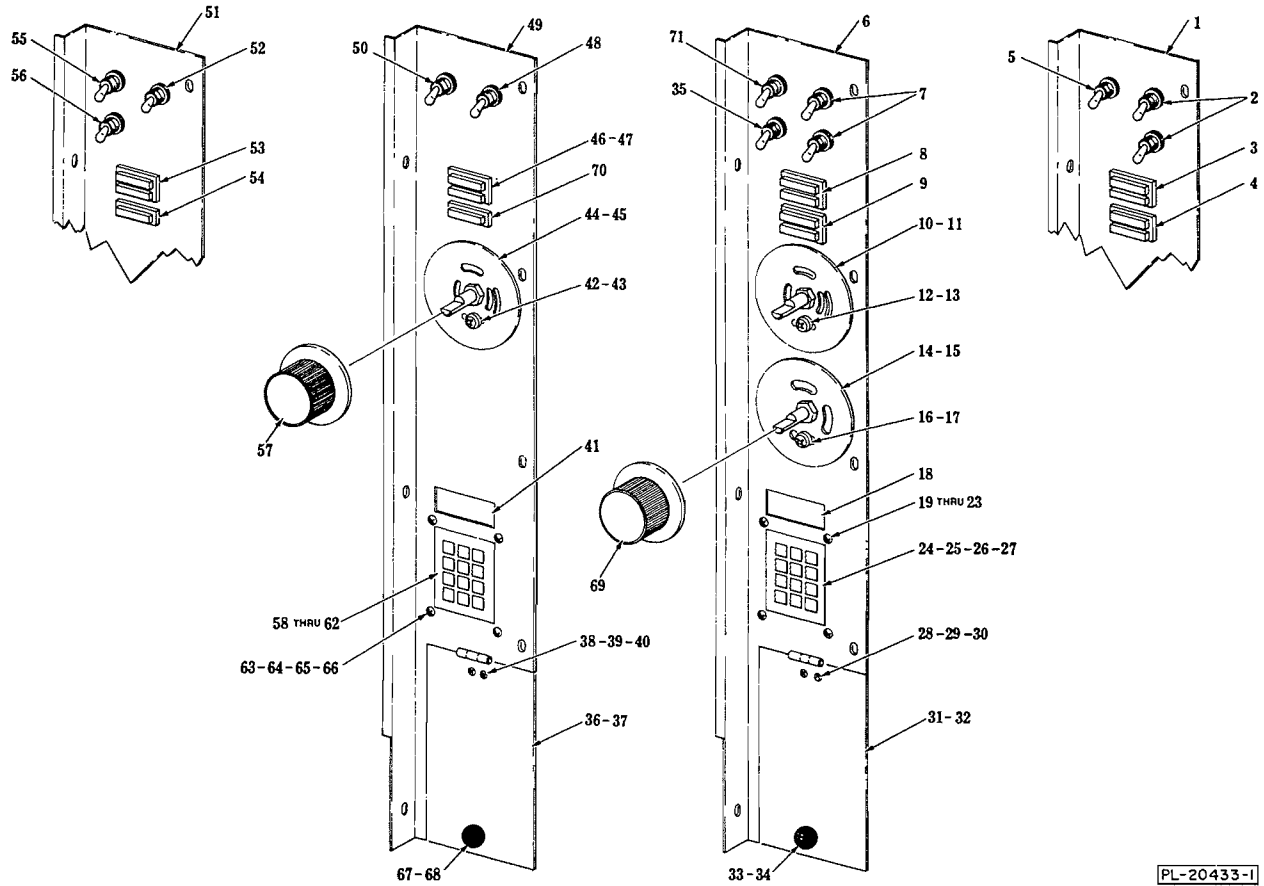
GN90A	ML-43662
GN92A	ML-43663

ELECTRICAL COMPONENT PANEL

ILLUS. PL-20432-1	PART NO.	NAME OF PART ²³	AMT.
1	355040-1	Filter Assy	AR
2	335652-1	Transformer (120 V.A.C.; 24 V., 10 VA.)	1
3	335653-1	Transformer (200-240 V.A.C.; 24 V., 20 VA.)	1
4	335652-1	Transformer (120 V.A.C.; 24 V., 10 VA.)	1
5	335653-1	Transformer (200-240 V.A.C.; 24 V., 20 VA.)	1
6	355040-1	Filter Assy	1
7	345186-1	Screw - Ground	1
8	SD-34-46	Self-Tapping Screw 6-32 x 1/2 Hex Washer Hd., Type T (GN92A)	2
9	87714-20-2	Relay (3 P.D.T.; 10 A., 120 V.A.C.) (GN92A)	1
10	SD-34-46	Self-Tapping Screw 6-32 x 1/2 Hex Washer Hd., Type T (GN92A)	2
11	87714-26-1	Relay - Time Delay (12 A., 120 V.A.C.) (2 Seconds Fixed Delay) (GN92A)	1
12	355040-3	Filter (GN92A)	1
13	354409-1	Control - Electronic (GN92A)	1
14	354411-1	Stand-Off (Self-Locking) (GN92A)	4
15	354391-3	Relay (3 P.D.T.; 11 A., 24 V.D.C. Coil) (GN92A)	1
16	SD-34-46	Self-Tapping Screw 6-32 x 1/2 Hex Washer Hd., Type T (GN92A)	2
17	SD-34-49	Self-Tapping Screw 8-32 x 1/2 Slot Hex Washer Hd., Type T	2
18	SD-34-49	Self-Tapping Screw 8-32 x 1/2 Slot Hex Washer Hd., Type T	2
19	354972-1	Panel - Component	1
	345750-1	Plug - Black (6 Circuits)	1
	345520-1	Cap - Plug (Natural) (4 Circuits)	1
	345520-3	Cap - Plug (Natural) (12 Circuits)	1
	340195-1	Terminal - Block (200-240 V.)	1
	SD-34-54	Screw (200-240 V.)	2
	350700-1	Lug - Terminal (200-240 V.)	1



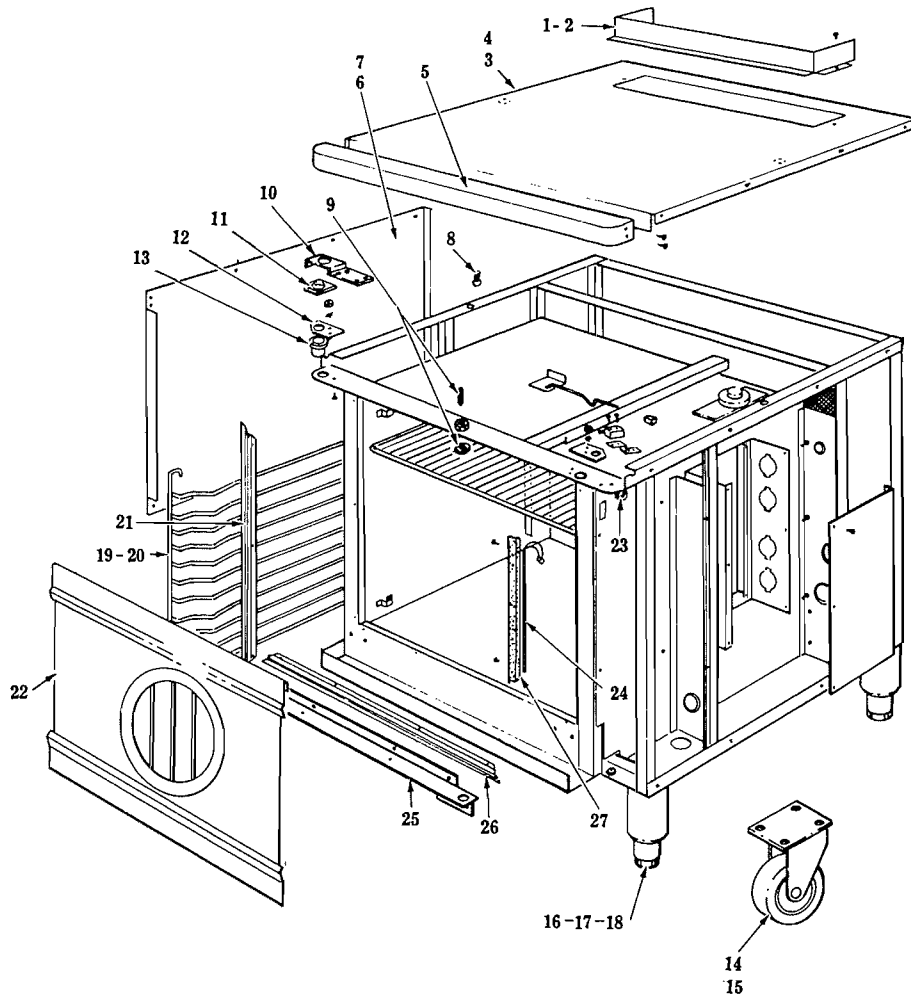
ELECTRICAL COMPONENT PANEL



PL-20433-1

CONTROL PANEL UNIT

ILLUS. PL-20433-1	PART NO.	CONTROL PANEL UNIT NAME OF PART ²³	AMT.
1	354993-1	Panel - Control (1 Speed Motor) (GN92A)	1
2	340324-12	Switch (SPST)	2
3	354575-2	Light - Indicator (On/Heat)	1
4	354575-3	Light - Indicator (No Ignition/Ready)	1
5	340324-11	Switch (4 P.D.T.)	1
6	354993-2	Panel - Control (2 Speed Motor) (GN92A)	1
7	340324-12	Switch (SPST)	2
8	354575-2	Light - Indicator (On/Heat)	1
9	354575-3	Light - Indicator (No Ignition/Ready)	1
10	354410-1	Thermostat	1
11	353560-1	Plate - Dial (150°/450°F.)	1
12	SD-34-19	Self-Tapping Screw 10 x 3/8 Phil. Truss Hd., Type AB	2
13	WS-29-45	Washer	2
14	354410-1	Thermostat	1
15	354422-1	Plate - Dial (110°/180°F.)	1
16	SD-34-19	Self-Tapping Screw 10 x 3/8 Phil. Truss Hd., Type AB	2
17	WS-29-45	Washer	2
18	353619-1	Filter	1
19	347618-1	Keyboard	1
20	347619-1	Gasket	1
21	335691-1	P.C. Board Assy	1
22	354995-1	Spacer - Shield	4
23	354996-1	Shield - Timer Board	1
24	SC-116-86	Mach. Screw 2-56 x 3/4 Phil. Pan Hd	4
25	345967-6	Spacer	4
26	WL-19-29	Lock Washer 2 Int. Shakeproof	4
27	NS-46-7	Mach. Nut 2-56 Hex	8
28	SC-118-62	Mach. Screw 10-32 x 5/16 Phil. Pan Hd	2
29	WS-19-6	Washer	2
30	NS-11-23	Mach. Nut 10-32 Hex	2
31	355032-1	Overlay - Oven Lighting Instruction	1
32	354967-1	Cover - Gas Access	1
33	354971-1	Knob - Lower Control Panel	1
34	348398-1	Strike & Catch Assy	1
35	340324-9	Switch (D.P.D.T.) (2 Speed Motor)	1
36	355032-1	Overlay - Oven Lighting Instruction	1
37	354967-1	Cover - Gas Access	1
38	SC-118-62	Mach. Screw 10-32 x 5/16 Phil. Pan Hd	2
39	WS-19-6	Washer	2
40	NS-11-23	Mach. Nut 10-32 Hex	2
41	353619-1	Filter	1
42	SC-114-83	Mach. Screw 6-32 x 1/4 Pan Hd	2
43	WS-28-20	Washer	2
44	353613-1	Thermostat	1
45	353560-1	Plate - Dial (150°/450°F.)	1
46	354575-2	Light - Indicator (On/Heat) (120 V., 60 Hz., 1 Ph.) (110-120 V., 50/60 Hz., 1 Ph.)	1
47	354575-1	Light - Indicator (On/Heat) (200-240 V., 50/60 Hz., 1 Ph.)	1
48	340324-12	Switch (SPST)	1
49	354993-3	Panel - Control (1 Speed Motor) (GN90A)	1
50	340324-11	Switch (4 P.D.T.)	1
51	354993-4	Panel - Control (2 Speed Motor) (GN90A)	1
52	340324-12	Switch (SPST)	1
53	354575-2	Light - Indicator (On/Heat)	1
54	354575-4	Light - Indicator (No Ignition)	1
55	340324-11	Switch (4 P.D.T.)	1
56	340324-9	Switch (D.P.D.T.)	1
57	354208-1	Knob - Control	1
58	347618-1	Keyboard	1
59	347619-1	Gasket	1
60	335691-1	P.C. Board Assy	1
61	354995-1	Spacer - Shield	4
62	354996-1	Shield - Timer Board	1
63	SC-116-86	Mach. Screw 2-56 x 3/4 Phil. Pan Hd	4
64	345967-6	Spacer	4
65	WL-19-29	Lock Washer 2 Int. Shakeproof	4
66	NS-46-7	Mach. Nut 2-56 Hex	8
67	354971-1	Knob - Lower Control Panel	1
68	348398-1	Strike & Catch Assy	1
69	354208-1	Knob - Control	2
70	354575-4	Light - Indicator (No Ignition)	1
71	340324-11	Switch (4 P.D.T.)	1
	355030-1	Lead Set (1 Speed Motor)	1
	355030-2	Lead Set (2 Speed Motor)	1
	345519-3	Plug (Natural) (6 Circuits) (GN90)	1

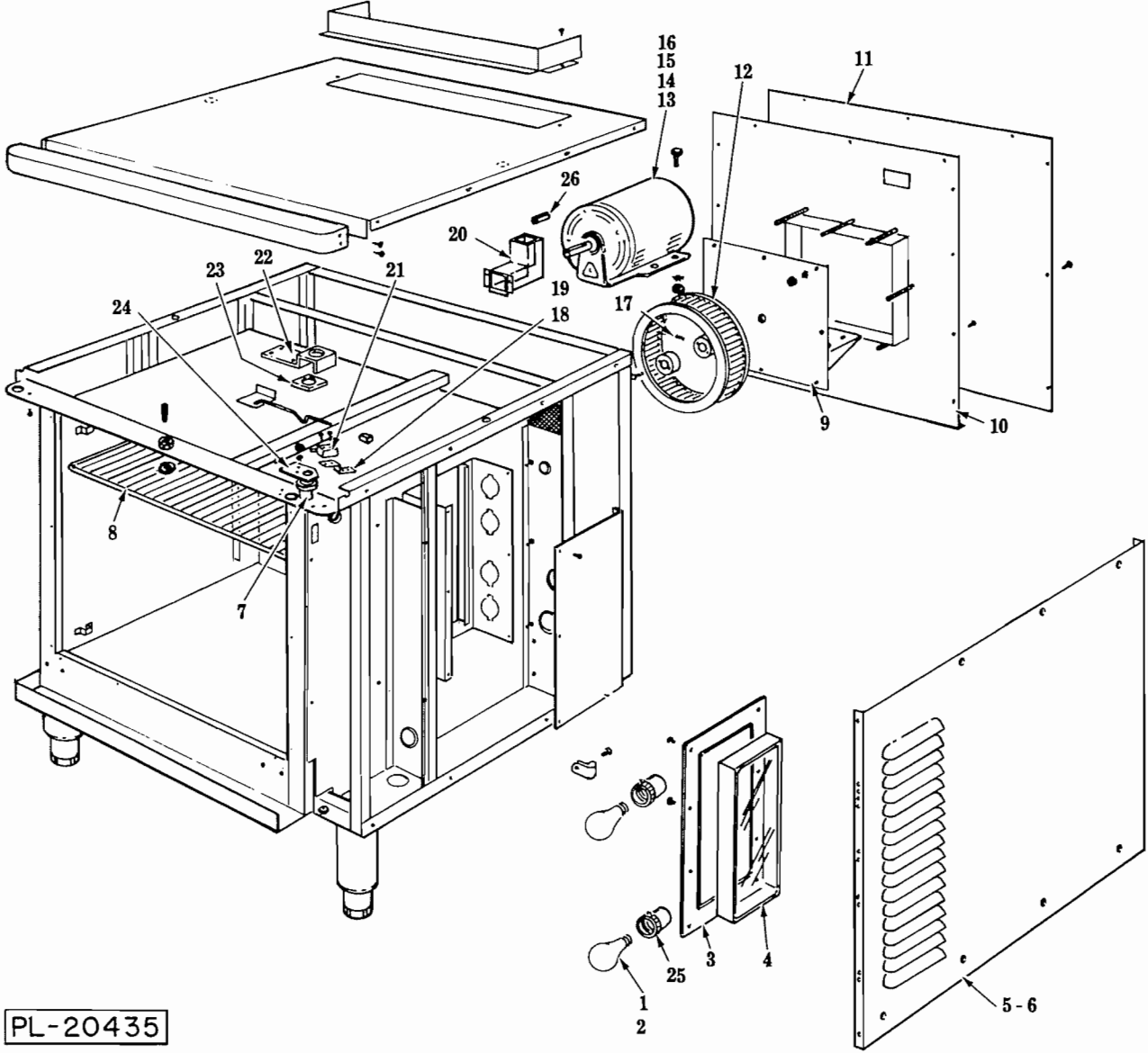


PL-20434

OVEN UNITS

OVEN UNIT

ILLUS. PL-20434	PART NO.	NAME OF PART ²³	AMT.
1	343516-1	Shell - Chimney (PTD.)	1
2	343516-2	Shell - Chimney (SST)	1
3	343508-1	Top - Rear (PTD.)	1
4	343508-2	Top - Rear (SST)	1
5	343501-1	Top - Front	1
6	342201-1	Panel - Outer (L.H.) (PTD.)	1
7	342201-2	Panel - Outer (L.H.) (SST)	1
8	339337-1	Stud - Locating	2
9	347545-1	Door Catch Assy	1
10	353484-1	Retainer	1
11	353482-1	Spacer	1
12	353483-1	Plate - Upper Door Bearing	1
13	347080-2	Bushing	1
14	341655-6	Caster - 6" "Swivel"	AR
15	341655-7	Caster - 6" "Rigid"	AR
16	340445-2	Leg - Adjustable (6")	AR
17	342150-5	Leg - Adjustable (8")	AR
18	342150-4	Leg - Adjustable (25 ³ / ₄ ")	AR
19	342141-1	Rack - Support (L.H.)	1
20	342141-2	Rack - Support (R.H.)	1
21	342155-1	Gasket - Door (L/R) (20")	2
22	354954-1	Blower Baffle (SST)	1
23	342154-2	Plug - Thermostat	1
24	354319-1	Probe Assy	1
25	342137-1	Door Sill Assy	1
26	342155-2	Gasket - Door 29"	2
27	342132-4	Guard - Thermostat Bulb	1



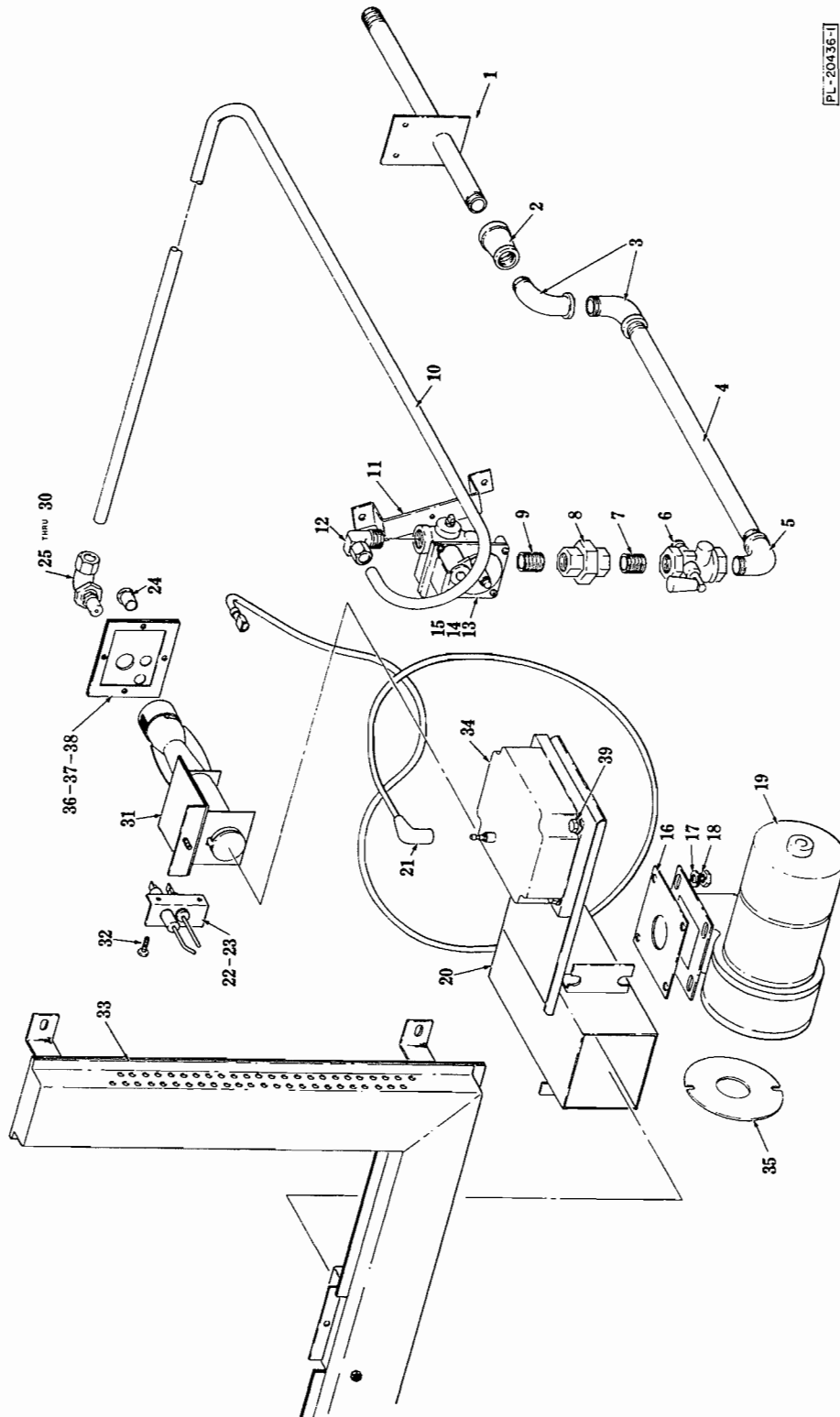
PL-20435

OVEN UNIT

OVEN UNIT

ILLUS. PL-20435	PART NO.	NAME OF PART ²³	AMT.
1	342766-1	Light Bulb - Oven (40 Watts) (120 V.)	4
2	342766-2	Light Bulb - Oven (60 Watts) (200-240 V.)	2
3	343611-2	Trim - Window	1
4	342129-2	Window - Oven Light	1
5	354968-1	Panel - Outer (R.H.) (PTD.)	1
6	354968-2	Panel - Outer (R.H.) (SST)	1
7	347080-2	Bushing	1
8	342142-1	Rack Assy	1
9	354957-1	Motor Mount	1
10	354960-1	Back - Inner Panel	1
11	355022-1	Panel - Back (PTD.)	1
12	342205-1	Blower	1
13	355000-2	Motor $\frac{3}{4}$ H.P. (1 Speed) (120 V., 60 Hz.; 110 V., 50 Hz.)	1
14	355000-1	Motor $\frac{1}{2}$ H.P. (2 Speed) (120 V., 60 Hz.)	1
15	345201-4	Motor $\frac{1}{3}$ H.P. (1 Speed) (200-240/50/1)	1
16	346217-1	Washer - Motor Mounting	8
17	SC-113-53	Set Screw $\frac{5}{16}$ -24 x $\frac{3}{8}$ Soc. Hdls	2
18	343509-1	Bracket - Door Switch	1
19	SD-34-62	Self-Tapping Screw 10 x $\frac{1}{2}$ Hex Washer Hd., Type T	2
20	354975-1	Flue Deflector Assy	1
21	342147-1	Switch - Door	1
22	353484-1	Plate - Retainer	1
23	353482-1	Spacer	1
24	353483-1	Plate - Upper Door Bearing	1
25	340263-1	Socket - Oven Light	2
26	343529-2	Key - Blower ($1\frac{3}{8}$ " Lg.)	1
	343226-1	Cord & Plug (120 V., 60 Hz; 110 V., 50 Hz.)	1
	355317-1	Filter (Use with Cord & Plug)	1
	355318-1	Drip Pan Accessory	1

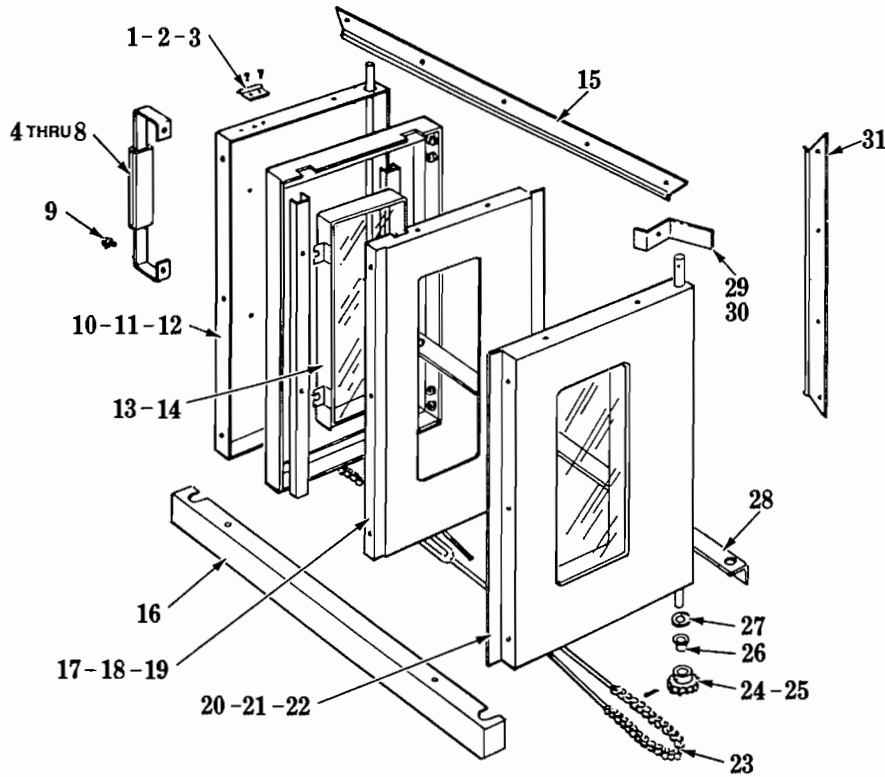
PL-20436-1



GAS BURNER AND HEAT EXCHANGER UNIT

GAS BURNER AND HEAT EXCHANGER UNIT

ILLUS. PL-20436-1	PART NO.	NAME OF PART ²³	AMT.
1	355045-1	Pipe & Support Assy	1
2	FP-24-6	Coupling 1/2 to 3/8 Reducing	1
3	FP-78-75	Elbow 3/8 x 90°	2
4	FP-81-55	Pipe 3/8 x 12 3/4	1
5	FP-78-75	Elbow 3/8 x 90°	1
6	354442-1	Valve - Manual Shutoff	1
7	FP-35-46	Pipe 3/8 x 1 Lg. (T.B.E.)	1
8	348049-1	Union 3/8	1
9	FP-35-46	Pipe 3/8 x 1 Lg. (T.B.E.)	1
10	355002-1	Tube - Gas Inlet	1
11	355001-1	Support - Gas Control	1
12	348037-2	Elbow	1
13	354344-4	Valve - Gas Control (Nat.)	1
14	354344-5	Valve - Gas Control (Pro. & Bute.)	1
15	355040-3	Filter (GN92A)	1
16	355017-1	Gasket - Blower	1
17	WL-6-17	Lock Washer 1/4 Medium	4
18	NS-15-1	Nut - Hex 1/4-20	4
19	354984-1	Blower & Motor Assy	1
20	355192-1	Burner Box	1
21	355087-1	Cable - High Voltage	1
22	354444-1	Electrode - Ignition	1
23	355105-1	Support - Lighter	1
24	FE-16-23	Bushing - Electrical	2
25	348031-13	Orifice 90° Compression (31 Drill)	1
26	348031-15	Orifice 90° Compression (49 Drill)	1
27	348031-16	Orifice 90° Compression (50 Drill)	1
28	348031-1	Orifice 90° Compression (34 Drill)	1
29	348031-14	Orifice 90° Compression (32 Drill)	1
30	348031-17	Orifice 90° Compression (51 Drill)	1
31	355312-1	Burner Bracket & Tube Assy	1
32	SD-34-5	Self-Tapping Screw 6 x 3/8 Phil. Pan Hd., Type AB	2
33	355193-1	Heat Exchanger	1
34	354447-1	Controller - Spark Ignitor	1
35	355047-1	Restrictor - Blower Motor	1
36	355151-1	Gasket - Cover Plate	1
37	355185-1	Plate - Burner Box Cover	1
38	SD-34-15	Self-Tapping Screw 8-18 x 3/8 Rd. Hd., Type AB	4
	354994-1	Spark Module Harness Assy	1
	355319-1	Common Flue Accessory	1



PL-20442-1

DOOR UNIT

ILLUS. PL-20442-1	PART NO.	NAME OF PART ²³	AMT.
1	347546-1	Strike - Door	1
2	347577-1	Shim	1
3	SC-114-17	Mach. Screw 10-32 x 3/4 Phil. Pan Hd	2
4	347608-1	Door Handle (W/Window)	1
5	347063-1	Door Handle (Solid)	2
6	347711-1	Grip - Door Handle	1
7	WS-29-45	Washer	2
8	SC-114-10	Mach. Screw 8-32 x 1/4 Phil. Pan Hd	2
9	SC-114-29	Cap Screw 1/4-20 x 3/8 Phil. Pan Hd	2
10	342125-1	Door - Front (L.H.) (SST) (W/Window)	1
11	342125-2	Door - Front (R.H.) (SST) (W/Window)	1
12	345904-1	Door - Front (L.H./R.H.) (SST) (Solid)	2
13	SD-34-62	Self-Tapping Screw 10 x 1/2 Slot Hex Washer Hd., Type T	8
14	342129-1	Window Assy	2
15	342155-2	Seal - Door	2
16	343515-1	Front Cover - Door Sill	1
17	342124-1	Door - Inner (L.H.) (SST) (W/Window)	1
18	342124-2	Door - Inner (R.H.) (SST) (W/Window)	1
19	345906-1	Door - Inner (L.H./R.H.) (SST) (Solid)	2
20	342235-1	Door Assy. (L.H.) (SST) (W/Window) (Incls. items 4, 6, 7, 8, 9, 10, 13, 14 & 17)	1
21	342235-2	Door Assy. (R.H.) (SST) (W/Window) (Incls. items 13, 14, 15 & 18)	1
22	346822-1	Door Assy. (L.H./R.H.) (SST) (Solid) (Incls. items 12, 13 & 19)	1
23	343608-2	Door Chain Assy. (SST)	2
24	342166-1	Sprocket - Door Shaft	2
25	PS-4-11	Spirol Pin 3/16 x 1 1/4 (Sprocket)	2
26	347080-2	Bushing - Door Shaft	2
27	343143-1	Washer	4
28	342137-1	Door Sill Assy	1
29	343530-1	Lever - Door Switch	1
30	SD-34-52	Self-Tapping Screw 8-32 x 1 Hex Hd	1
31	342155-1	Seal - Door (L/R) (20")	2
	352667-1	Door Stop Cable Assy. (Use with item 23)	AR