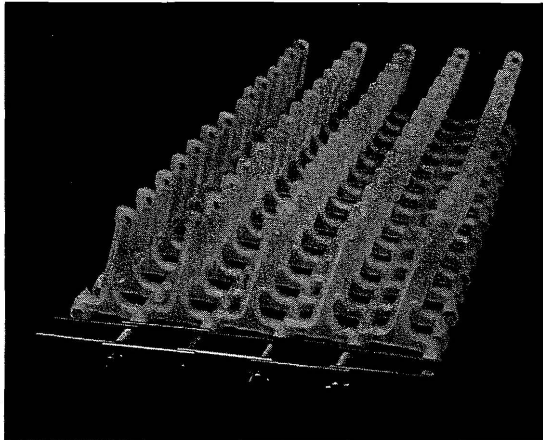




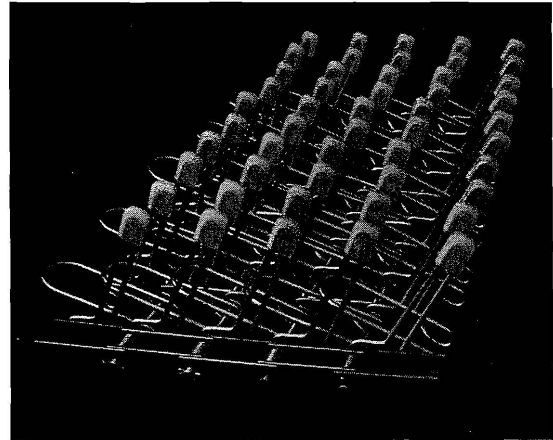
# CATALOG OF REPLACEMENT PARTS

## FT-300 SERIES DISHWASHERS

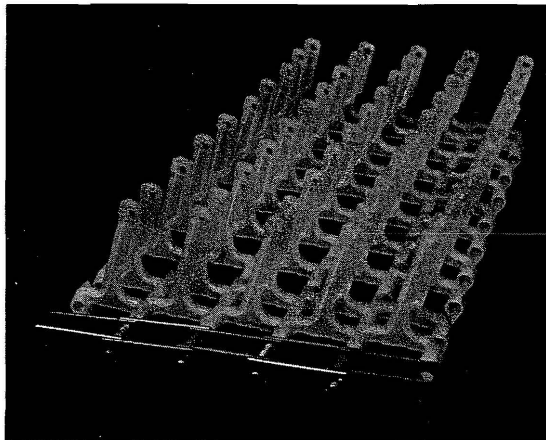
### CONVEYOR



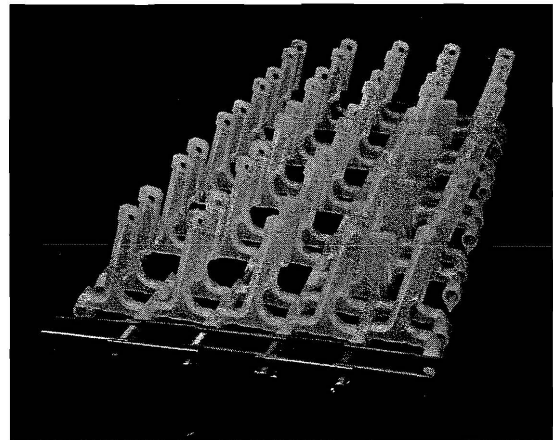
TYPE A



TYPE C

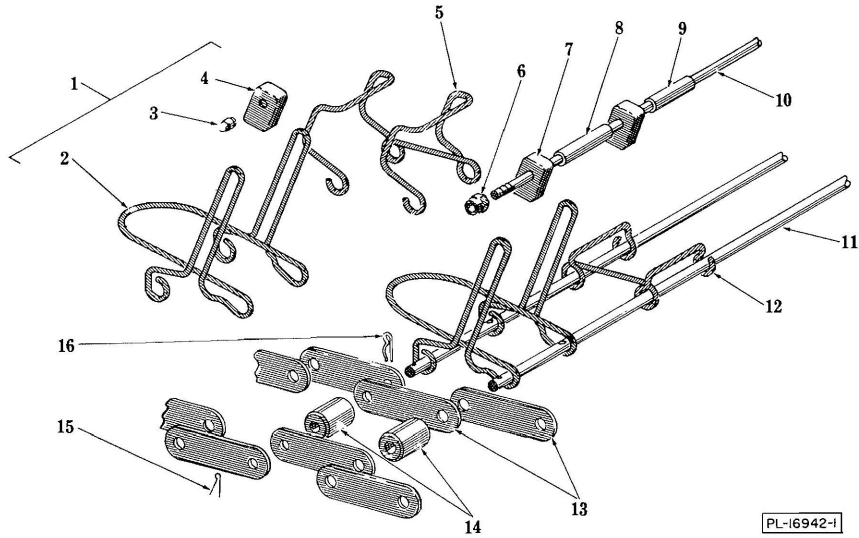


TYPE B



TYPE E

FT MISC REPLACEMENT PARTS



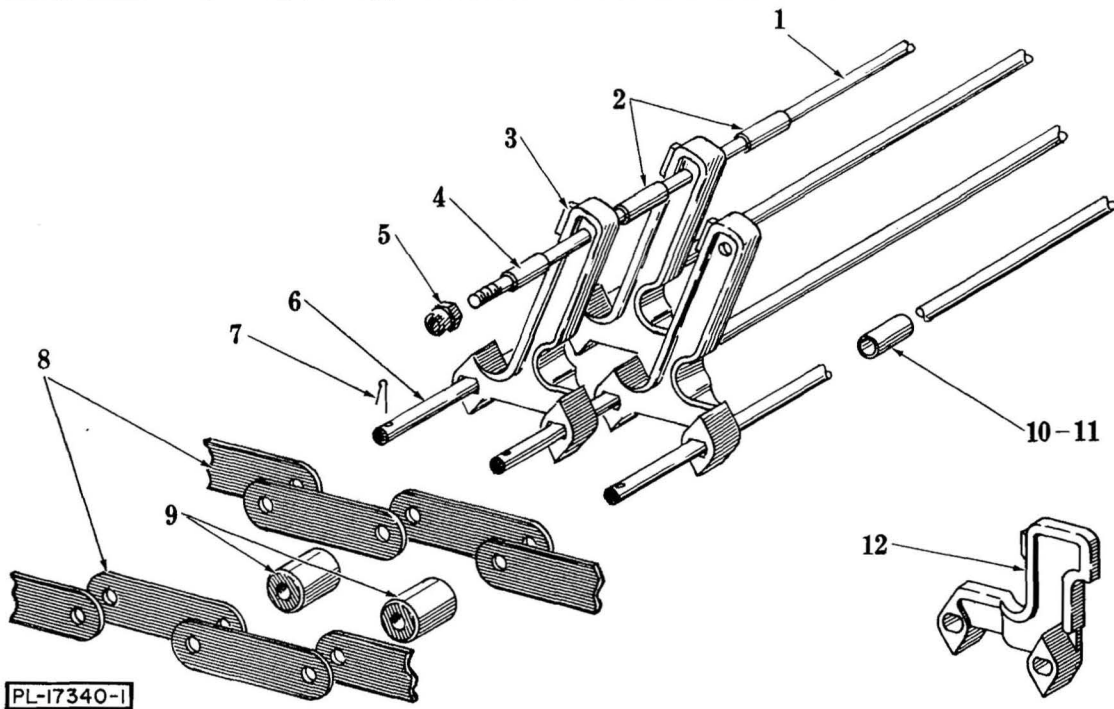
SST CONVEYOR  
(TYPE C)

ILLUS. NO.	PART NO.	NAME OF PART	AMT.
1	P-62768	Flight Wire & Guard Assy. (Incls. items #2, 3 & 4)	See Chart Below
2	P-62531	Wire - Flight	See Chart Below
3	M-83173	Retainer - Flight Wire Guard	See Chart Below
4	P-62527	Guard - Flight Wire	See Chart Below
5	P-70726	Spacer - Wire (Tray Hook)	See Chart Below
6	NS-36-5	Stop Nut - #12-24 "Elastic"	See Chart Below
7	M-83363	Guard - Flight Wire	See Chart Below
8	M-83366	Spacer - Conveyor (2" Lg.)	See Chart Below
9	M-83355	Spacer - Conveyor (1-7/8" Lg.)	See Chart Below
10	P-83361	Rod - Conveyor Cross	See Chart Below
11	M-81060	Rod - Conveyor	See Chart Below
12	P-62529	Spacer - Wire	See Chart Below
13	M-81100	Bar - Side	See Chart Below
14	M-62525	Roller	See Chart Below
15	PC-5-7	Cotter Pin - 3/32" x 1/2"	See Chart Below
16	M-66233	Retainer - Conveyor Side Bar	See Chart Below

Illus. Numbers, giving number reqd. per Model  
(see listing above for Part No. and Name)

Model Machine	1/2	3/4	5/6	*7	*8	*9	*10	11	12	13	14/15/16
FT-16	780	1560	78	390	195	156	39	156	234	624	312
FT-17	840	1680	84	420	210	168	42	168	252	672	336
FT-18	890	1780	90	450	225	180	45	178	267	712	356
FT-19	940	1880	94	470	235	188	47	188	282	752	376
FT-20	990	1980	100	500	250	200	50	198	297	792	396
FT-21	1040	2080	104	520	260	208	52	208	312	832	416
FT-22	1100	2200	110	550	275	220	55	220	330	880	440
FT-23	1150	2300	116	580	290	232	58	230	345	920	462
FT-24	1200	2400	120	600	300	240	60	240	360	960	480
FT-25	1250	2500	126	630	315	252	63	250	375	1000	500
FT-26	1300	2600	130	650	325	260	65	260	390	1040	520

\*Quantities listed are when cross rods are used every fourth link. For each cross rod (item #8) omit one row (10 each) of standard guards (item #4) and retainer (item #3).



DURA-FLEX CONVEYOR

ILLUS. NO.	PART NO.	NAME OF PART	AMT.
1	P-83364	Rod - Conveyor Cross	See Chart Below
2	M-83367	Spacer - Conveyor (1-3/16" Lg.)	See Chart Below
3	R-81808	Link - Flight	See Chart Below
4	M-83932	Spacer - Conveyor End (3/4" Lg.)	See Chart Below
5	NS-31-21	Stop Nut - 1/4"-20 "Elastic"	See Chart Below
6	M-81060	Rod - Conveyor	See Chart Below
7	PC-5-7	Cotter Pin - 3/32" x 1/2"	See Chart Below
8	M-81100	Bar - Side	See Chart Below
9	M-62525	Roller	See Chart Below
10	M-83649	Type B or E Conveyor Link Spacer (13/16" Lg.)	
11	A-108697	Type E Conveyor Link Spacer (1-7/16" Lg.)	
12	C-106458	Type E Flight Link	

Illus. Numbers, giving number reqd. per Model  
(see listing above for Part No. and Name)

Model Machine	*1	*2	*3	*4/*5	6	7	8	9
FT-16	39	507	2184	78	156	312	624	312
FT-17	42	546	2353	84	168	336	672	336
FT-18	45	585	2492	90	178	356	712	356
FT-19	47	611	2632	94	188	376	752	376
FT-20	50	650	2772	100	198	396	792	396
FT-21	52	676	2912	104	208	416	832	416
FT-22	55	715	3080	110	220	440	880	440
FT-23	58	754	3220	116	230	462	920	462
FT-24	60	780	3360	120	240	480	960	480
FT-25	63	819	3500	126	250	500	1000	500
FT-26	65	845	3640	130	260	520	1040	520

\*Quantites listed are when cross rods are used every fourth link.

COMPLETE CONVEYOR ASSEMBLY

TYPE A-14 FLIGHT LINKS PER ROD

MACH. MODEL	WITHOUT CROSS RODS	CROSS RODS EVERY SECOND	CROSS RODS EVERY THIRD	CROSS RODS EVERY FORTH	CROSS RODS EVERY FIFTH
FT-316	S-87038-1	S-86939-1	S-86939-11	S-86939-21	S-86939-31
FT-317	S-87038-2	S-86939-2	S-86939-12	S-86939-22	S-86939-32
FT-318	S-87038-3	S-86939-3	S-86939-13	S-86939-23	S-86939-33
FT-319	S-87038-4	S-86939-4	S-86939-14	S-86939-24	S-86939-34
FT-320	S-87038-5	S-86939-5	S-86939-15	S-86939-25	S-86939-35
FT-321	S-87038-6	S-86939-6	S-86939-16	S-86939-26	S-86939-36
FT-322	S-87038-7	S-86939-7	S-86939-17	S-86939-27	S-86939-37
FT-323	S-87038-8	S-86939-8	S-86939-18	S-86939-28	S-86939-38
FT-324	S-87038-9	S-86939-9	S-86939-19	S-86939-29	S-86939-39
FT-325	S-87038-10	S-86939-10	S-86939-20	S-86939-30	S-86939-40
FT-326	S-87038-11	S-86939-41	S-86939-42	S-86939-43	S-86939-44

TYPE C- SST WITH TIPS

MACH. MODEL	WITHOUT CROSS RODS	CROSS RODS EVERY SECOND	CROSS RODS EVERY THIRD	CROSS RODS EVERY FORTH	CROSS RODS EVERY FIFTH
FT-316	S-81099-1	S-83362-1	S-83362-11	S-83362-21	S-83362-31
FT-317	S-81099-2	S-83362-2	S-83362-12	S-83362-22	S-83362-32
FT-318	S-81099-3	S-83362-3	S-83362-13	S-83362-23	S-83362-33
FT-319	S-81099-4	S-83362-4	S-83362-14	S-83362-24	S-83362-34
FT-320	S-81099-5	S-83362-5	S-83362-15	S-83362-25	S-83362-35
FT-321	S-81099-6	S-83362-6	S-83362-16	S-83362-26	S-83362-36
FT-322	S-81099-7	S-83362-7	S-83362-17	S-83362-27	S-83362-37
FT-323	S-81099-8	S-83362-8	S-83362-18	S-83362-28	S-83362-38
FT-324	S-81099-9	S-83362-9	S-83362-19	S-83362-29	S-83362-39
FT-325	S-81099-10	S-83362-10	S-83362-20	S-83362-30	S-83362-40
FT-326	S-81099-11	S-83362-41	S-83362-42	S-83362-43	S-83362-44