



CATALOG OF REPLACEMENT PARTS

FD4 SERIES FOOD WASTE DISPOSERS

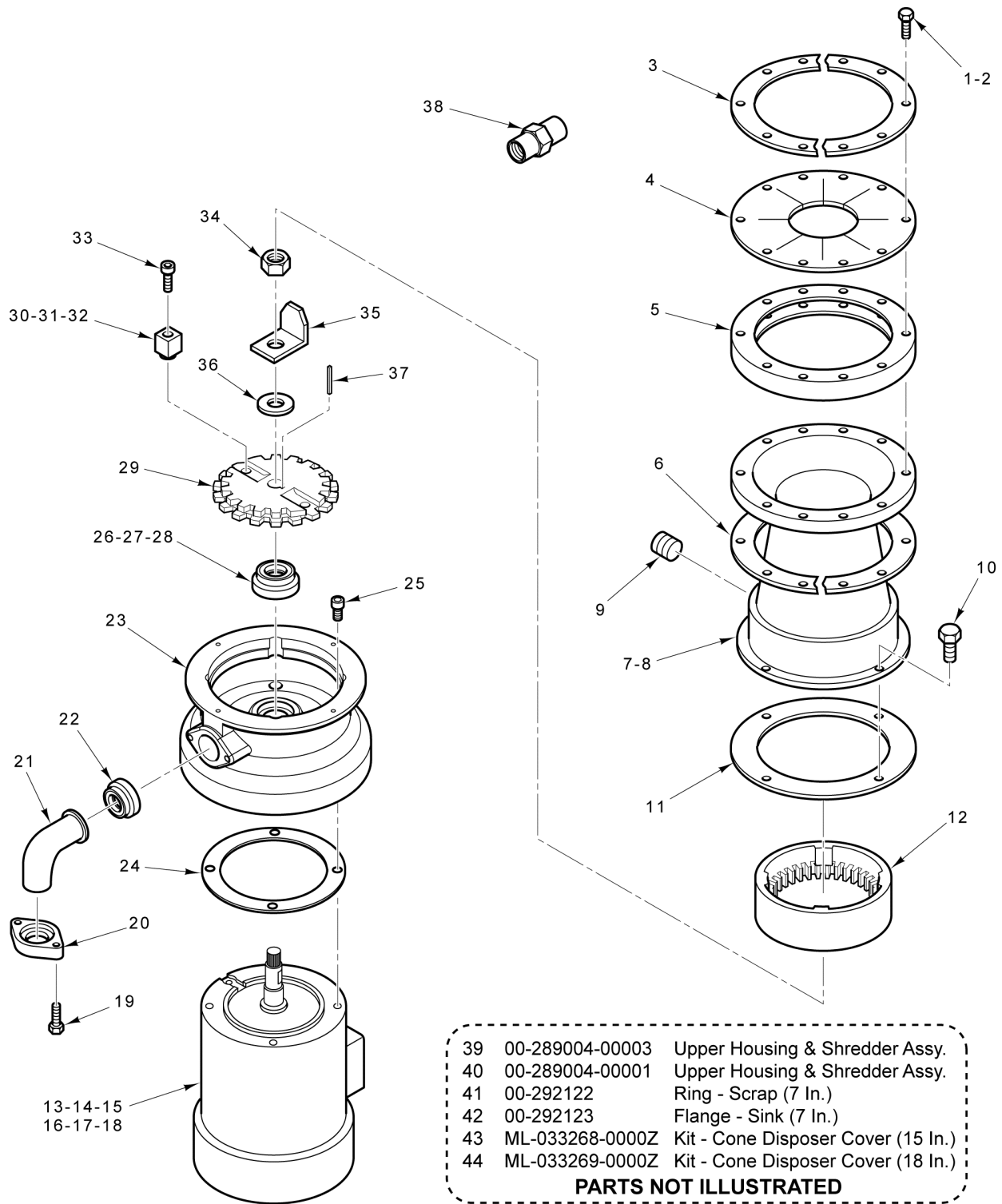


ML-130278
ML-130279
ML-130280

FD4-50
FD4-75
FD4-125

Table of Contents

5 DISPOSER UNIT (FD4-50, FD4-75, & FD4-125)



PL-60660

**DISPOSER UNIT
 (FD4-50, FD4-75, & FD4-125)**

**DISPOSER UNIT
(FD4-50, FD4-75, & FD4-125)**

ILLUS. PL-60660	PART NO.	NAME OF PART	AMT.
1	SC-118-16	Cap Screw 1/4-20 x 1-3/8 Hex Hd. (Use With Item 7).....	10
2	SC-041-12	Cap Screw 5/16-18 x 7/8 Hex Hd. (SST) (Use With Item 8).....	3
3	00-203185	Ring - Top Cone Clamp (Half).....	2
4	00-202105	Guard - Splash (8-1/16 In. Bolt Circle) (Use With Item 7).....	1
5	00-201492	Ring - Isolating.....	1
6	00-203191	Ring - Bottom Cone Clamp (Half).....	2
7	00-289015	Housing - Upper (8-1/8 In. High, 8-1/16 In. Bolt Circle, 8-11/16 In. O.D. Flange).....	1
8	00-289006	Housing - Upper (5-1/2 In. High, 4-1/2 In. Bolt Circle, 6-7/8 O.D. Flange).....	1
9	FP-066-02	Plug 1/2 Sq. Hd. Pipe.....	1
10	SC-036-13	Cap Screw 1/4-20 x 3/4 Hex Hd.....	4
11	00-316397	Gasket - Waste.....	1
12	00-201227	Ring - Shredder.....	1
13	00-316400	Motor (110-120/200-240 V., 50/60 Hz., 1 Ph.) (FD4-50, ML-130278).....	1
14	00-316402	Motor (110-120/200-240 V., 50/60 Hz., 1 Ph.) (FD4-75, ML-130279).....	1
15	00-316404	Motor (110-120/200-240 V., 50/60 Hz., 1 Ph.) (FD4-125, ML-130280).....	1
16	00-316399	Motor (200-240/380-415/460 V., 50/60 Hz., 3 Ph.) (FD4-50, ML-130278).....	1
17	00-316401	Motor (200-240/380-415/460 V., 50/60 Hz., 3 Ph.) (FD4-75, ML-130279).....	1
18	00-316403	Motor (200-240/380-415/460 V., 50/60 Hz., 3 Ph.) (FD4-125, ML-130280).....	1
19	SC-041-12	Cap Screw 5/16-18 x 7/8 Hex Hd. (SST).....	2
20	00-200731	Flange - Spout.....	1
21	00-203401	Spout - Waste.....	1
22	00-201404	Gasket - Spout.....	1
23	00-316398	Housing - Lower.....	1
24	00-316339	Gasket.....	1
25	00-316329	Screw 3/8-16 x 3/4 Hex Socket Hd. (SST).....	4
26	00-316356	Kit - Cartridge Seal Kit - Cartridge Seal (Incls. Items 24 & 27).....	1
27	00-316336	Seal - Cartridge.....	1
28	00-316337	Tool - Install Seal.....	1
29	00-201250-00001	Flywheel.....	1
30	00-201223-00003	Cutter - Flywheel (FD4-50, ML-130278).....	2
31	00-201223-00001	Cutter - Flywheel (FD4-75, ML-130279).....	2
32	00-201223-00004	Cutter - Flywheel (FD4-125, ML-130280).....	2
33	00-202556-00001	Screw.....	2
34	NS-031-39	Stop Nut 1/2-20 "Elastic".....	1
35	00-201235	Cutter - Hi-Bulk.....	1
36	00-272003	Seal - Shaft.....	1
37	00-203619-00001	Key - Shaft.....	1
38	00-201721-00001	Flow control (5 G.P.M.).....	1
39	00-289004-00003	Upper Housing & Shredder Ring Assy. (Incls. Items 1, 3 thru 7, 9, & 12).....	1
40	00-289004-00001	Upper Housing & Shredder Ring Assy. (Incls. Items 2, 8, 9, & 12).....	1
41	00-292122	Ring - Scrap (7 In.).....	1
42	00-292123	Flange - Sink (7 In. I.D.).....	1
43	ML-033268-0000Z	Kit - Cone Disposer Cover (15 In.).....	1
44	ML-033269-0000Z	Kit - Cone Disposer Cover (18 In.).....	1

