

HOBART

**CATALOG OF
REPLACEMENT PARTS**



**MODEL
EL5-1224**

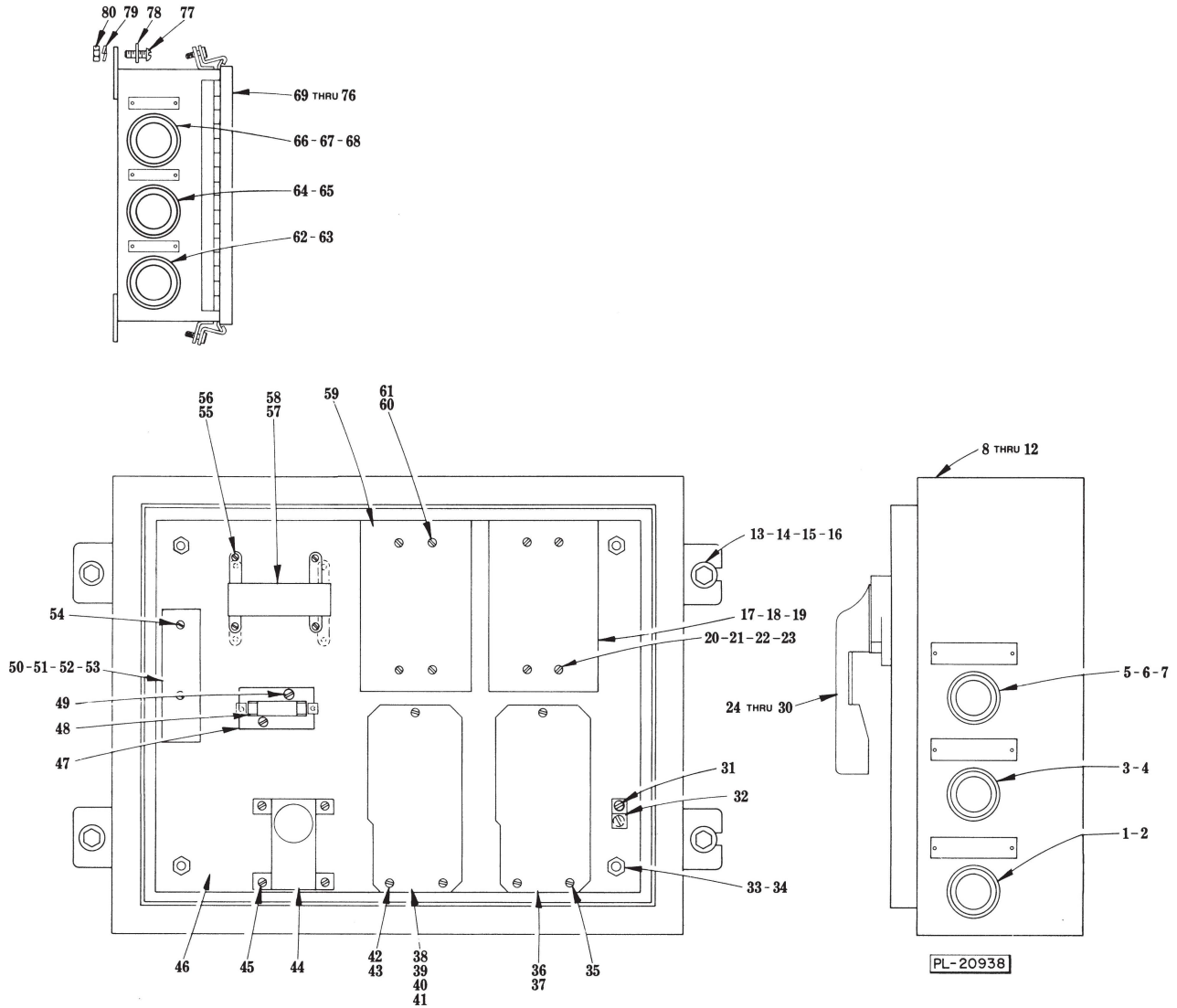
**WASTE EQUIPMENT
SYSTEM**

A product of HOBART CORPORATION

TROY, OHIO 45374

FORM 11551 (Rev. D, 8-88)

ML		MODEL		OPERATION
ML-31074	EL5-1224	FS	LP	
ML-31075	EL5-1224	FS	LP	
ML-31076	EL5-1224	FS	HP	
ML-31077	EL5-1224	FS	HP	
ML-31082	EL5-1224	UC	LP	W/O Feed Trough L-R
ML-31084	EL5-1224	UC	LP	W/O Feed Trough R-L
ML-31091	EL5-1224	UC	HP	W/O Feed Trough L-R
ML-31093	EL5-1224	UC	HP	W/O Feed Trough R-L
ML-31095	EL5-1224	UC	LP	W/Feed Trough L-R
ML-31097	EL5-1224	UC	LP	W/Feed Trough R-L
ML-31099	EL5-1224	UC	HP	W/Feed Trough L-R
ML-31080	EL5-1224	UC	HP	W/Feed Trough R-L
ML-37092	EL5-1224	UC	LP	W/FT & Hinged Cover L-R
ML-37093	EL5-1224	UC	LP	W/FT & Hinged Cover R-L
ML-37094	EL5-1224	UC	HP	W/FT & Hinged Cover L-R
ML-37095	EL5-1224	UC	HP	W/FT & Hinged Cover R-L
ML-37028	EL5-1224	W/RP	FS	LP L-R
ML-37029	EL5-1224	W/RP	FS	LP R-L
ML-37030	EL5-1224	W/RP	FS	HP L-R
ML-37031	EL5-1224	W/RP	FS	HP R-L
ML-37032	EL5-1224	W/RP	UC	LP W/Feed Trough L-R
ML-37033	EL5-1224	W/RP	UC	LP W/Feed Trough R-L
ML-37034	EL5-1224	W/RP	UC	HP W/Feed Trough L-R
ML-37035	EL5-1224	W/RP	UC	HP W/Feed Trough R-L
ML-37044	EL5-1224	W/RP	UC	LP W/FT & Hinged Cover L-R
ML-37045	EL5-1224	W/RP	UC	LP W/FT & Hinged Cover R-L
ML-37046	EL5-1224	W/RP	UC	HP W/FT & Hinged Cover L-R
ML-37047	EL5-1224	W/RP	UC	HP W/FT & Hinged Cover R-L
ML-37048	EL5-1224	W/RP	UC	LP W/FT & F.H. & Tray L-R
ML-37049	EL5-1224	W/RP	UC	LP W/FT & F.H. & Tray R-L
ML-37050	EL5-1224	W/RP	UC	HP W/FT & F.H. & Tray L-R
ML-37051	EL5-1224	W/RP	UC	HP W/FT & F.H. & Tray R-L



**ELECTRICAL UNIT
(W/O RECIRCULATING PUMP)**

ILLUS. PL-20938	PART NO.	NAME OF PART ³¹	AMT.
1	87711-161-2	Operator - Pushbutton (Stop)	1
2	87711-162-2	Boot - Pushbutton (Stop)	1
3	87711-161-1	Operator - Pushbutton (Start)	1
4	87711-162-1	Boot - Pushbutton (Start)	1
5	87711-163-1	Operator - Selector Switch	1
6	87711-163-4	Block - Contact	1
7	87711-165-1	Boot - Selector	1
8	223770-1	Enclosure - Panel (L. to R., Non-Timed Mach.)	1
9	223770-2	Enclosure - Panel (L. to R., Timed Mach.)	1
10	223770-3	Enclosure - Panel (R. to L., Non-Timed Mach.)	1

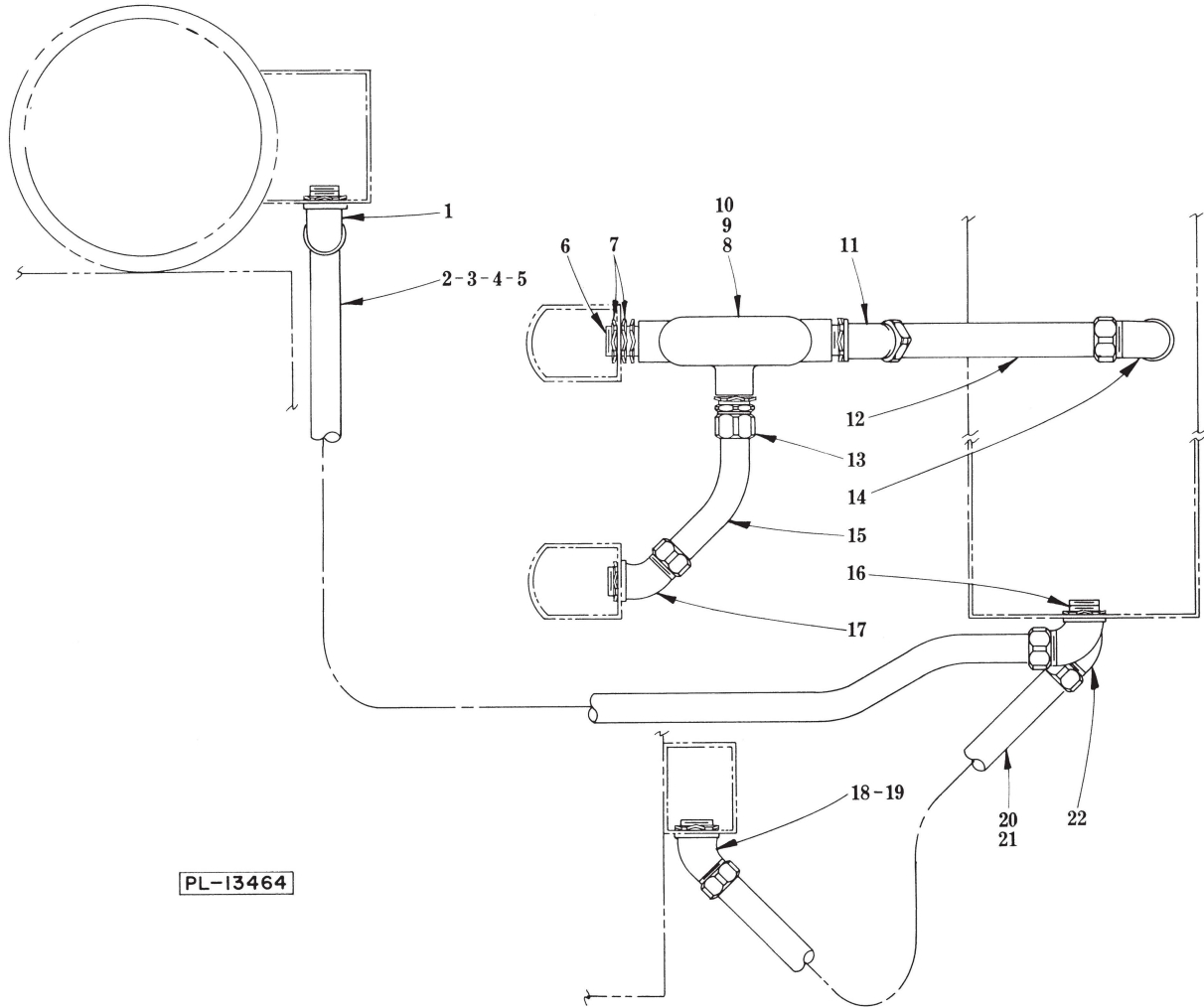
**ELECTRICAL UNIT (Cont.)
(W/O RECIRCULATION PUMP)**

ILLUS. PL-20938	PART NO.	NAME OF PART ³¹	AMT.
11	223770-4	Enclosure - Panel (R. to L., Timed Mach.)	1
*12	223761-5	Enclosure - Panel (Wall Mounted)	1
13	SC-41-30	Cap Screw 3/8-16 x 1 Hex Hd	4
14	WS-26-6	Washer	4
15	WL-6-28	Lock Washer 3/8 Medium	4
16	NS-15-13	Full Nut 3/8-16 Hex	4
17	223488-3	Breaker - Circuit (200 V., 35 Amps.)	1
18	223488-2	Breaker - Circuit (230 V., 60 Hz.; 200 V., 50 Hz., 30 Amps.)	1
19	223488-7	Breaker - Circuit (460 V., 15 Amp)	1
20	SC-33-22	Mach. Screw 8-32 x 3 7/8 Pan Hd	4
21	270599	Spacer Kit (Contains 4 Spacers)	1
22	WL-5-12	Lock Washer 8 Light	4
23	WS-2-47	Washer	4
24	222450	Handle - Vari-Depth (Incls. items 25, 26 & 27)	1
25	SC-33-17	Mach. Screw 1/4-20 x 7/16 Pan Hd	3
26	WL-5-27	Lock Washer 1/4 Light	3
27	222962	Gasket - Handle	1
28	223521	Shaft - Handle (Long)	1
29	270598	Mechanism - Handle (Incls. items 20, 21, 22, 23 & 30)	1
30	SC-89-69	Cap Screw 10-32 x 1/2 Soc. Hd	1
31	SC-9-41	Mach. Screw 3/4-20 x 3/8 Rd. Hd	1
32	118544-3	Lug - Solderless	1
33	NS-13-25	Full Nut 3/8-16 Hex	4
34	Ws-18-7	Washer	4
35	SC-8-17	Mach. Screw 10-32 x 3/8 Rd. Hd	3
36	222451-2	Starter - Magnetic (Less Elements)	1
37	— — —	Heater Elements (Give Elec. Spec., Mach. Model & Motor Type)	AR
38	222451-1	Starter - Magnetic (Less Elements) (200 V., 50/60 Hz./230 V., 60 Hz.)	1
39	— — —	Heater Elements (Give Elec. Spec., Mach. Model & Motor Type)	AR
40	222452-1	Relay - Thermal Overload (460 V., 60 Hz.) (Less Elements)	1
41	— — —	Heater Elements (Give Elec. Spec., Mach. Model & Motor Type)	AR
42	SC-8-17	Mach. Screw 10-32 x 3/8 Rd. Hd., 50/60 Hd./230 V., 60 Hz	3
43	SC-9-56	Mach. Screw 8-32 x 3/8 Rd. Hd. (460 V., 60 Hz.)	3
44	223459-1	Timer	1
45	SC-9-49	Mach. Screw 6-32 x 3/8 Rd. Hd	4
46	223363	Panel	1
47	223454	Holder - Fuse	1
48	FE-22-8	Fuse - Dual Element (2.5 Amp., 250 V.)	1
49	SC-8-41	Mach. Screw 10-32 x 1/2 Rd. Hd	2
50	104294-7	Terminal Block Assy. (8 Terminals)	1
51	104294-9	Terminal Block Assy. (11 Terminals)	1
52	104294-10	Terminal Block Assy. (16 Terminals)	1
53	104294-12	Terminal Block Assy. (19 Terminals)	1
54	SC-8-17	Mach. Screw 10-32 x 3/8 Rd. Hd	2
55	SC-9-56	Mach. Screw 8-32 x 3/8 Rd. Hd	3
56	SC-27-29	Mach. Screw 8-32 x 3/8 Rd. Hd (Ground)	1
57	223452-1	Transformer (200 V., 150 V.A.)	1
58	223450-1	Transformer (Above 200 V., 150 V.A.)	1
59	223488-1	Breaker - Circuit (200 V., 50/60 Hz.; 230 V., 60 Hz., 15 Amp.)	1
60	SC-33-21	Mach. Screw 8-32 x 3 1/8 Pan Hd	4
61	WL-5-12	Lock Washer 8 Light	4
*62	87711-161-2	Operator - Pushbutton (Stop)	1
*63	87711-162-2	Boot - Pushbutton (Stop)	1
*64	87711-161-1	Operator - Pushbutton (Start)	1
*65	87711-162-1	Boot - Pushbutton (Start)	1
*66	87711-163-1	Operator - Selector Switch	1
*67	87711-165-1	Boot - Selector	1
*68	87711-164-1	Block - Contact	1
69	223765-1	Junction Box (L. to R., W/O Timer) (4 Holes)	1
70	223765-4	Junction Box (R. to L., W/O Timer) (4 Holes)	1
71	223765-7	Junction Box (L. to R., W/O Timer) (3 Holes)	1
72	223765-8	Junction Box (R. to L., W/O Timer) (3 Holes)	1
73	223764-1	Junction Box (L. to R., W/Timer) (4 Holes)	1
74	223764-4	Junction Box (R. to L., W/Timer) (4 Holes)	1
75	223764-7	Junction Box (L. to R., W/Timer) (3 Holes)	1
76	223032-8	Junction Box (R. to L., W/Timer) (3 Holes)	1
77	SC-21-39	Mach. Screw 1/4-20 x 5/8 Rd. Hd	4
78	WS-17-6	Washer	4
79	WL-6-17	Lock Washer 1/4 Medium	4
80	NS-15-1	Full Nut 1/4-20 Hex	4

*Under Counter.

ELECTRICAL UNIT (W/RECIRCULATING PUMP)

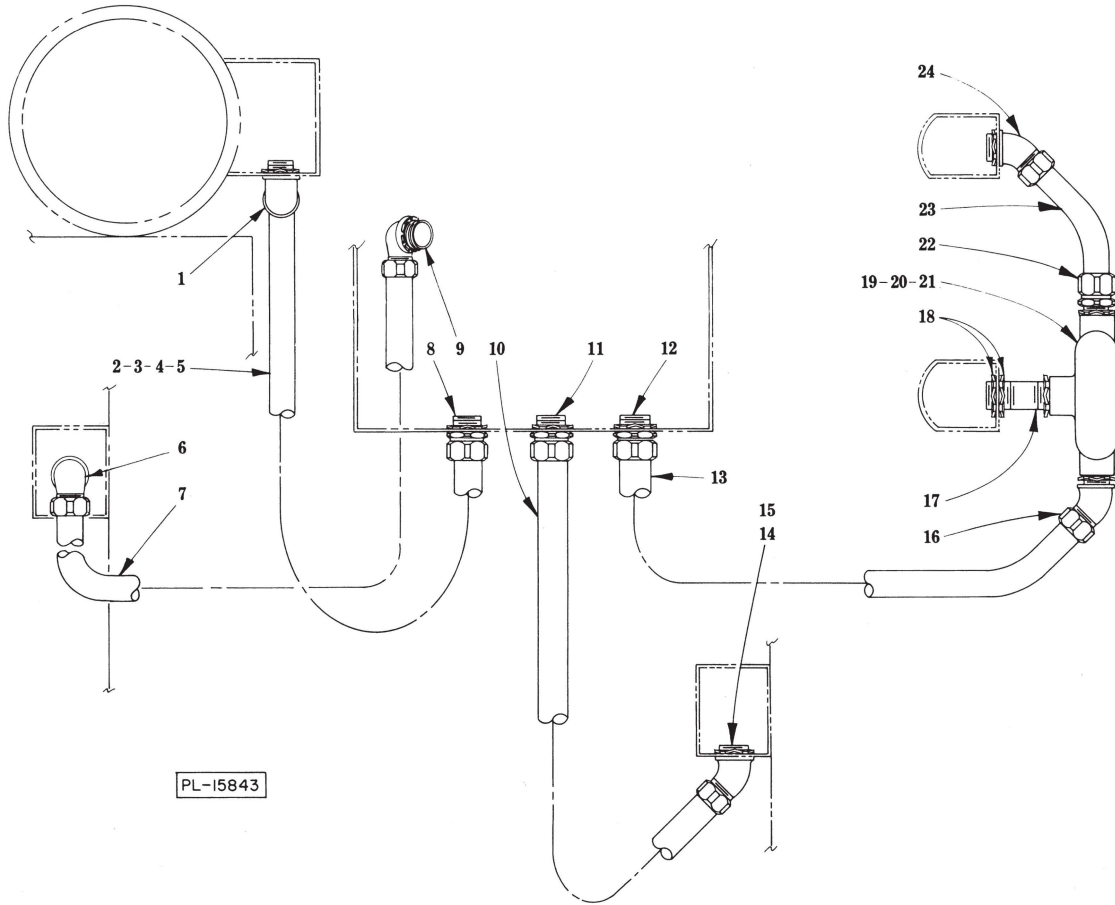
ILLUS. PL-20939	PART NO.	NAME OF PART ³¹	AMT.
1	222907-5	Enclosure - Panel (Wall Mounted)	1
2	223488-4	Breaker - Circuit (200 V., 40 Amp.)	1
3	223488-3	Breaker - Circuit (230 V., 35 Amp.)	1
4	223488-7	Breaker - Circuit (460 V., 15 Amp.)	1
5	SC-33-22	Mach. Screw 8-32 x 3/8 Pan Hd	4
6	270599	Spacer Kit (Contains 4 Spacers)	1
7	WS-2-47	Washer	4
8	WL-5-12	Lock Washer 8 Light	4
9	222450	Handle - Vari-Depth (Incls. items 10, 11 & 12)	1
10	SC-33-17	Mach. Screw 1/4-20 x 7/16 Pan Hd	3
11	WL-5-27	Lock Washer 1/4 Light	3
12	222962	Gasket - Handle	1
13	223521	Shaft - Handle	1
14	270598	Mechanism - Handle (Incls. items 5, 6, 7, 8 & 15)	1
15	SC-89-69	Cap Screw 10-32 x 1/2 Soc. Hd	1
16	222451-2	Starter - Magnetic (Less Elements)	1
17	— — —	Heater Element (Give Elec. Spec., Mach. Model & Motor Type)	AR
18	SC-9-41	Mach. Screw 1/4-20 x 3/8 Rd. Hd	1
19	118544-3	Lug - Solderless	1
20	SC-8-17	Mach. Screw 10-32 x 3/8 Rd. Hd	3
21	NS-13-25	Full Nut 3/8-16 Hex	4
22	WS-18-7	Washer	4
23	223364	Panel	1
24	SC-8-17	Mach. Screw 10-23 x 3/8 Rd. Hd	AR
25	104294-12	Terminal Block Assy. (19 Terminals)	1
26	104294-14	Terminal Block Assy. (22 Terminals)	1
27	222451-1	Starter Magnetic (Less Elements)	1
28	— — —	Heater Element (Give Elec. Spec., Mach. Model & Motor Type)	AR
29	222452-1	Relay - Thermal Overload (Less Elements) (460 V., 60 Hz.)	1
30	— — —	Heater Element - Overload Relay (Give Elec. Spec., Mach. Model & Motor Type)	AR
31	SC-8-17	Mach. Screw 10-32 x 3/8 Rd. Hd	3
32	SC-9-56	Mach. Screw 8-32 x 3/8 Rd. Hd. (Above 250 V.)	3
33	SC-9-56	Mach. Screw 8-32 x 3/8 Rd. Hd	3
34	222452-1	Relay - Thermal Overload (Less Elements)	1
35	— — —	Heater Element - Overload Relay (Give Elec. Spec. Mach. Model & Motor Type)	AR
36	223454	Holder - Fuse	1
37	SC-9-49	Mach. Screw 6-32 x 3/8 Rd. Hd	4
38	FE-22-8	Fuse - Dual Element (250 V., 2.5 Amp.)	1
39	223459-1	Timer	1
40	SC-8-41	Mach. Screw 10-32 x 1/2 Rd. Hd	2
41	SC-9-56	Mach. Screw 8-32 x 3/8 Rd. Hd	3
42	SC-27-29	Mach. Screw 8-32 x 3/8 Rd. Hd. (Ground)	1
43	223452-1	Transformer (200 V., 150 V.A.)	1
44	223450-1	Transformer (230/460 V., 150 V.A.)	1
45	223488-1	Breaker - Circuit (200/230 V., 15 Amp.)	1
46	SC-33-21	Mach. Screw 8-32 x 3/8 Pan Hd	4
47	WL-5-12	Lock Washer 8 Light	4
48	87711-161-2	Operator - Pushbutton (Stop)	1
49	87711-162-2	Boot - Pushbutton (Stop)	1
50	87711-161-1	Operator - Pushbutton (Start)	1
51	87711-162-1	Boot - Pushbutton (Start)	1
52	87711-163-1	Operator - Selector Switch	1
53	87711-164-1	Block - Contact	1
54	87711-165-1	Boot - Selector	1
55	223765-1	Junction Box (L. to R., W/O Timer) (4 Holes)	1
56	223765-2	Junction Box (L. to R., W/O Timer) (5 Holes)	1
57	223765-3	Junction Box (L. to R., W/O Timer) (6 Holes)	1
58	223765-4	Junction Box (R. to L., W/O Timer) (4 Holes)	1
59	223765-5	Junction Box (R. to L., W/O Timer) (5 Holes)	1
60	223765-6	Junction Box (R. to L., W/O Timer) (6 Holes)	1
61	223764-1	Junction Box (L. to R., W/Timer) (4 Holes)	1
62	223764-2	Junction Box (L. to R., W/Timer) (5 Holes)	1
63	223764-3	Junction Box (L. to R., W/Timer) (6 Holes)	1
64	223764-4	Junction Box (R. to L., W/Timer) (4 Holes)	1
65	223764-5	Junction Box (R. to L., W/Timer) (5 Holes)	1
66	223764-6	Junction Box (R. to L., W/Timer) (6 Holes)	1
67	SC-21-39	Mach. Screw 1/4-20 x 5/8 Rd. Hd	4
68	WS-17-6	Washer	4
69	WL-6-17	Lock Washer 1/4 Medium	4
70	NS-15-1	Full Nut 1/4-20 Hex	4



PL-13464

**CONDUIT
(FREE STANDING MODELS ONLY)**

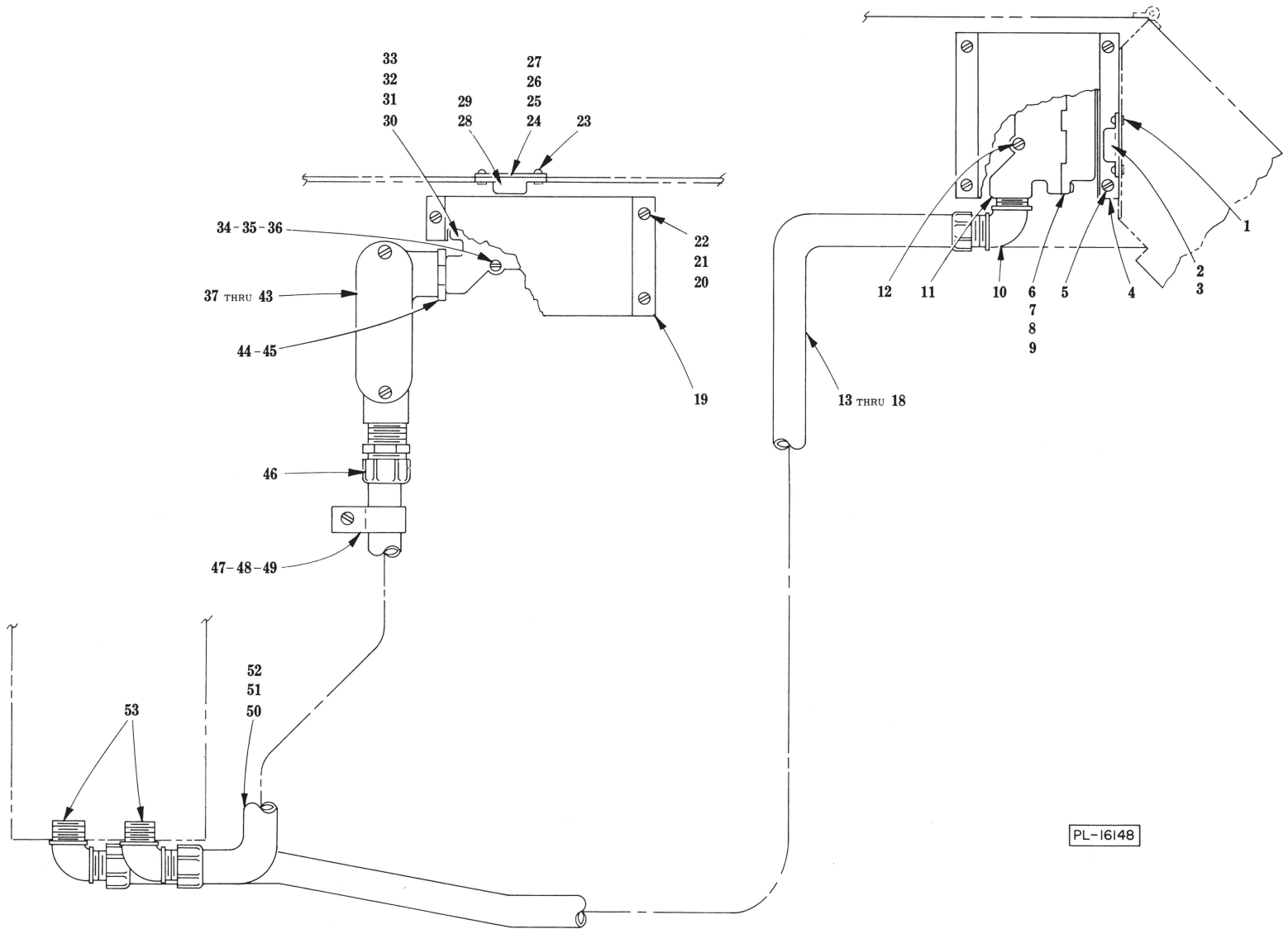
ILLUS. PL-13464	PART NO.	NAME OF PART ³¹	AMT.
1	FE-22-18	Connector 90° (1/2" Male Thd. x 1/2" Flex. Cnd.)	1
2	222983-3	Conduit 1/2" x 78" Flex	1
3	222983-4	Conduit 1/2" x 84" Flex	1
4	222983-6	Conduit 1/2" x 96" Flex	1
5	222983-7	Conduit 1/2" x 102" Flex	1
6	FE-22-12	Nipple 1/2 x 1 1/8 Lg. (T.B.E.)	1
7	FE-6-7	Lock Nut 1/2 Conduit	AR
8	FE-23-43	Unilet Tee 1/2	1
9	FE-4-18	Cover - Unilet Tee	1
10	FE-8-35	Gasket - Unilet Tee Cover	1
11	FE-7-2	Connector 45° (1/2 Male Thd. x 1/2 Flex. Cnd.)	1
12	222984-2	Conduit 1/2" Flex	1
13	FE-22-14	Connector - Straight (1/2 Male Thd. x 3/8 Flex. Cnd.)	1
14	FE-22-17	Connector - 90° (1/2" Male Thd. x 3/8 Flex. Cnd.)	1
15	222984-1	Conduit 3/8 x 9 Flex	1
16	FE-22-18	Connector 90° (1/2" Male Thd. x 1/2 Flex. Cnd.)	1
17	FE-7-2	Connector 45° (1/2 Male Thd. x 3/8 Flex. Cnd.)	1
18	FE-7-5	Connector 45° (1/2 Male Thd. x 1/2 Flex. Cnd.)	1
19	FE-7-23	Washer - Reducing	2
20	222983-1	Conduit 1/2" Flex. (460 V.)	1
21	222983-2	Conduit 1/2" Flex. (200 V.)	1
22	FE-7-5	Connector 45° (1/2" Male Thd. x 1/2 Flex. Cnd.)	1



**CONDUIT
(UNDER COUNTER MODELS ONLY)**

ILLUS. PL-15843	PART NO.	NAME OF PART ³¹	AMT.
1	FE-22-18	Connector 90° (1/2 Male Thd. x 1/2" Flex. Cnd.)	1
2	222983-4	Conduit 1/2" x 84" Flex	1
3	222983-5	Conduit 1/2" x 90° Flex	1
4	222983-7	Conduit 1/2" x 102" Flex	1
5	222983-12	Conduit 1/2" x 72" Flex	1
*6	FE-22-18	Connector 90° (1/2 Male Thd. x 1/2 Flex. Cnd.)	1
*7	222983-20	Conduit 1/2" x 30" Flex	1
8	FE-22-15	Connector - Straight (1/2 Male Thd. x 1/2 Flex. Cnd.)	1
*9	FE-22-18	Connector 90° (1/2 Male Thd. x 1/2 Flex. Cnd.)	1
10	222983-11	Conduit 1/2" Flex	1
11	FE-22-15	Connector - Straight (1/2 Male Thd. x 1/2 Flex. Cnd.)	1
12	FE-22-14	Connector - Straight (1/2 Male Thd. x 3/8 Flex. Cnd.)	1
13	222984-5	Conduit 3/8 x 48" Flex	1
14	FE-7-5	Connector 45° (1/2 Male Thd. x 1/2 Flex. Cnd.)	1
15	FE-7-23	Washer - Reducing	2
16	FE-7-2	Connector - 45° (1/2 Male Thd. x 3/8 Flex. Cnd.)	1
17	FE-22-13	Nipple 1/2 x 2 Lg. (T.B.E.)	1
18	FE-6-7	Lock Nut 1/2 Conduit	AR
19	FE-23-43	Unilet Tee 1/2	1
20	FE-4-18	Cover - Unilet Tee	1
21	FE-8-35	Gasket - Unilet Tee Cover	1
22	FE-22-14	Connector - Straight (1/2 Male Thd. x 3/8 Flex. Cnd.)	1
23	222984-1	Conduit 3/8" x 9" Flex	1
24	FE-7-2	Connector 45° (1/2 Male Thd. x 3/8 Flex. Cnd.)	1

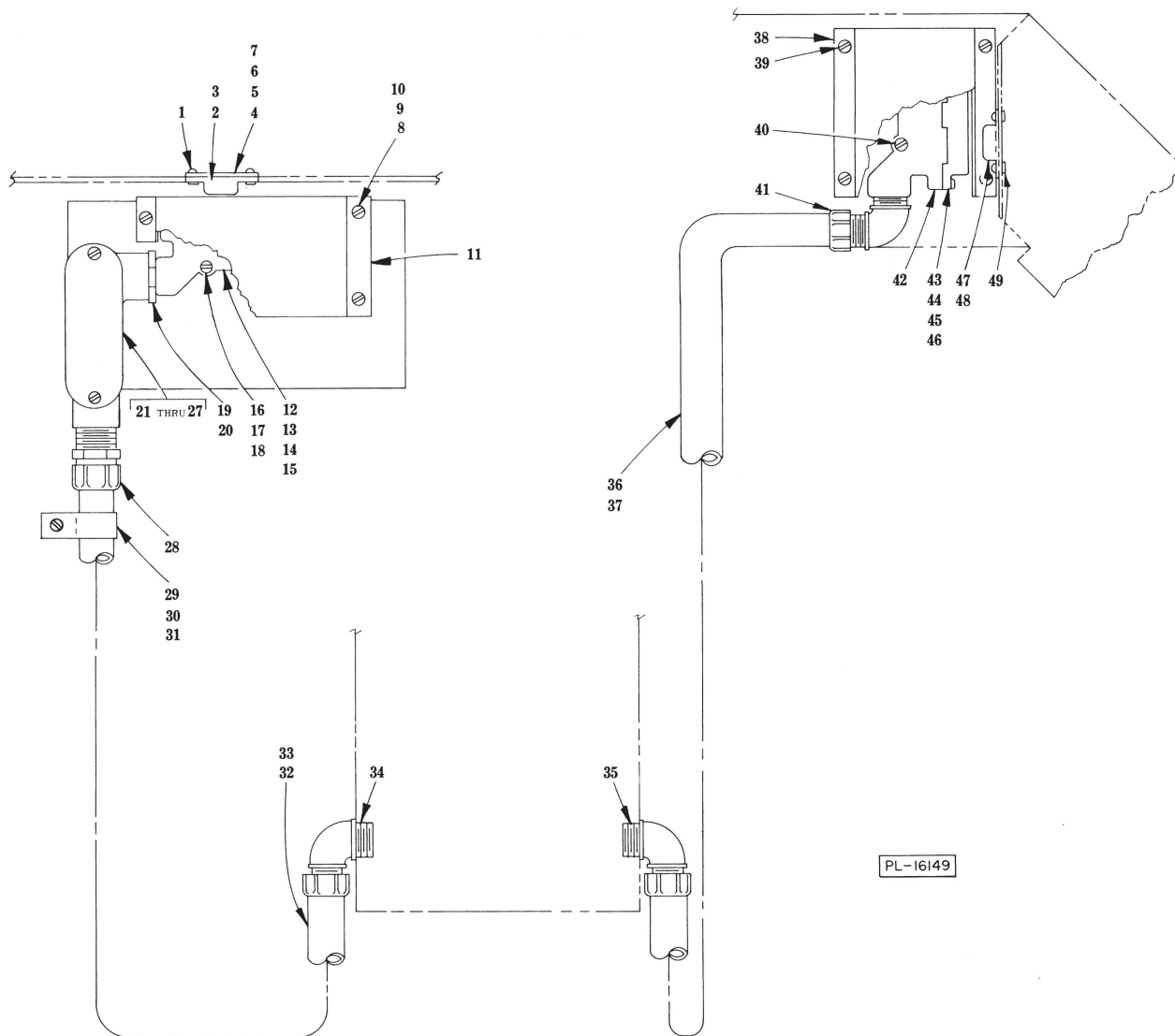
*Use with Recirculating Pump.



SAFETY SWITCHES
(FREE STANDING MODELS)

**SAFETY SWITCHES
(FREE STANDING MODELS)**

ILLUS. PL-16148	PART NO.	NAME OF PART ³¹	AMT.
1	RS-30-8	Rivet 1/8 Domed Hd	2
2	223304	Retainer - Magnet	1
3	111941	Magnet	1
4	223812	Box - Reed Switch	1
5	SC-21-13	Mach. Screw 8-32 x 1/4 Rd. Hd	4
6	288457-2	Switch & Cover Assy	1
7	SC-21-15	Mach. Screw 8-32 x 1/2 Rd. Hd	2
8	288963	Gasket	1
9	222326-3	Spacer	1
10	FE-22-18	Connector 90° (1/2 Male Thd. x 1/2 Flex. Cnd.)	1
11	288961	Housing - Safety Switch	1
12	SC-98-6	Mach. Screw 10-24 x 1 3/4 Rd. Hd	2
13	222983-4	Conduit 1/2" x 84" Flex	1
14	222983-5	Conduit 1/2" x 90" Flex	1
15	222983-6	Conduit 1/2" x 96" Flex	1
16	222983-7	Conduit 1/2" x 102" Flex	1
17	222983-9	Conduit 1/2" x 114" Flex	1
18	222983-12	Conduit 1/2" x 72" Flex	1
19	222919-1	Box - Reed Switch	1
20	SC-21-13	Mach. Screw 8-32 x 1/4 Rd. Hd	3
21	WL-6-1	Lock Washer 8 Medium	3
22	NS-11-12	Mach. Nut 8-32 Hex	3
23	RS-30-8	Rivet 1/8 Domed Hd	2
24	222915-2	Clip - Mounting	1
25	SC-21-22	Mach. Screw 10-24 x 3/8 Rd. Hd	2
26	WL-6-7	Lock Washer 10 Medium	2
27	NS-11-18	Mach. Nut 10-24 Hex	2
28	223304	Retainer - Magnet	1
29	111941	Magnet	1
30	288457-2	Switch & Cover Assy	1
31	106803	Gasket	1
32	288963	Housing - Safety Switch	1
33	SD-25-12	Self-Tapping Screw 8-18 x 1/2 Phil. Pan Hd. "Shakeproof"	2
34	SC-98-5	Mach. Screw 10-24 x 1 1/2 Rd. Hd	2
35	WL-6-7	Lock Washer 10 Medium	2
36	NS-11-18	Mach. Nut 10-24 Hex	2
37	222921-2	Unilet (Type "LL")	1
38	FE-4-48	Cover - Unilet Tee	1
39	FE-8-47	Gasket	1
40	WL-6-7	Lock Washer 10 Medium	2
41	NS-11-18	Mach. Nut 10-24 Hex	2
42	SC-21-22	Mach. Screw 10-24 x 3/8 Rd. Hd	2
43	WS-28-8	Washer	2
44	FE-6-7	Lock Nut 1/2 Conduit	AR
45	FE-22-12	Nipple 1/2 x 1 1/8 Lg. (T.B.E.)	1
46	FE-22-15	Connector - Straight (1/2 Male Thd. x 1/2 Flex. Cnd.)	1
47	FE-18-35	Clamp 3/4 Conduit	1
48	SC-21-37	Mach. Screw 1/4-20 x 3/8 Rd. Hd	1
49	WL-6-17	Lock Washer 1/4 Medium	1
50	222983-3	Conduit 1/2" x 78" Flex	1
51	222983-4	Conduit 1/2" x 84" Flex	1
52	222983-13	Conduit 1/2" x 42" Flex	1
53	FE-22-18	Connector 90° (1/2 Male Thd. x 1 Flex. Cnd.)	2
	222940	Magnet & Mtg. Clip Assy. (Incls. items 23, 24, 28 & 29)	1



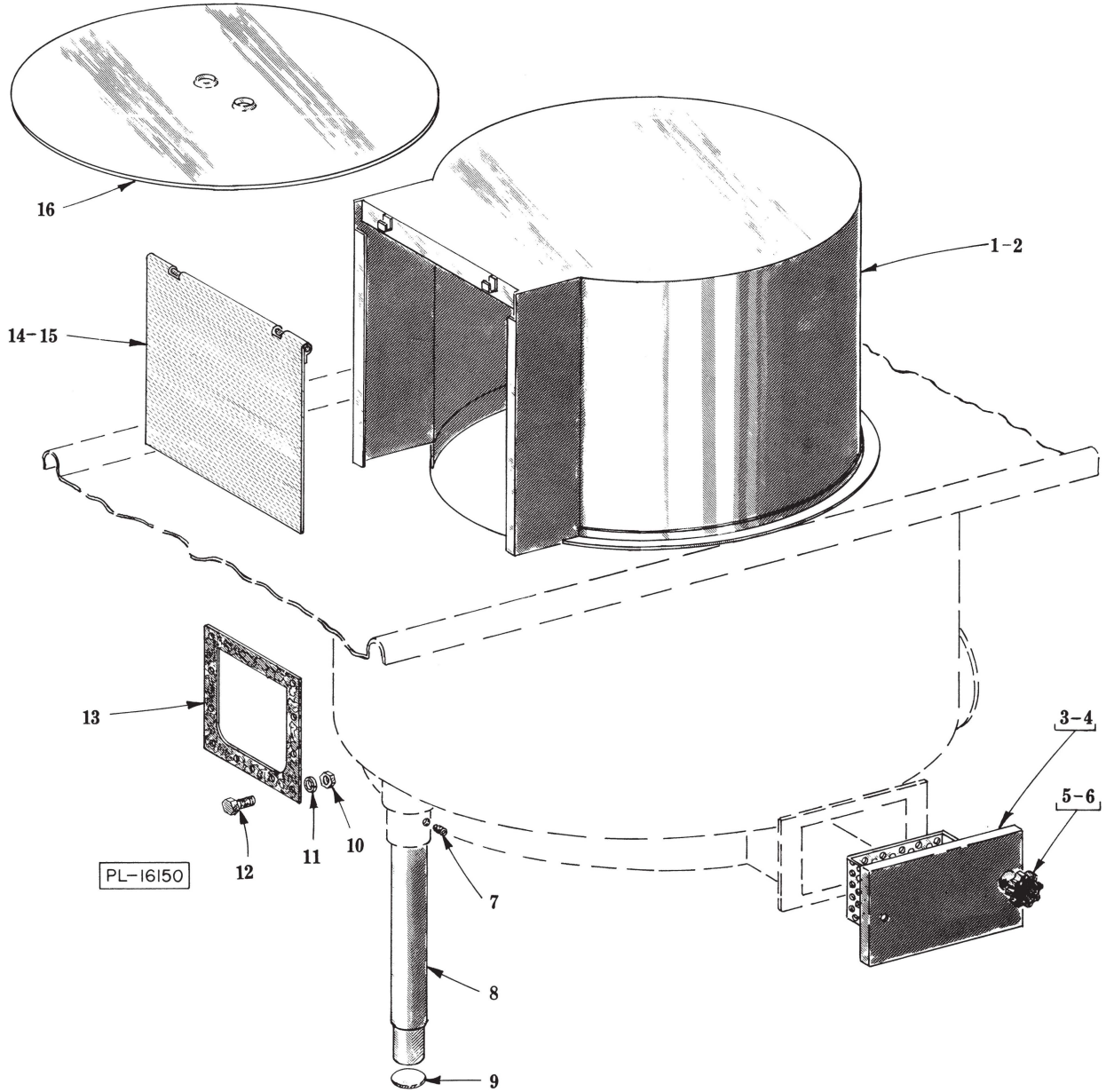
**SAFETY SWITCHES
(UNDER COUNTER MODELS)**

SAFETY SWITCHES (UNDER COUNTER MODELS)

ILLUS. PL-16149	PART NO.	NAME OF PART ³¹	AMT.
1	RS-30-8	Rivet - 1/8" Domed Hd	2
2	223304	Retainer - Magnet	1
3	111941	Magnet	1
4	222915-2	Clip - Mounting	1
5	SC-21-22	Mach. Screw 10-24 x 3/8 Rd. Hd	2
6	WL-6-7	Lock Washer 10 Medium	2
7	NS-11-18	Mach. Nut 10-24 Hex	2
8	SC-21-13	Mach. Screw 8-32 x 1/4 Rd. Hd	3
9	WL-6-1	Lock Washer 8	3
10	NS-11-12	Mach. Nut 8-32 Hex	3
11	222919-1	Box - Reed Switch	1
12	288457-2	Switch & Cover Assy	1
13	288963	Gasket	1
14	288961	Housing - Safety Switch	1
15	SC-21-15	Mach. Screw 8-32 x 1/2 Rd. Hd	2
16	SC-98-5	Mach. Screw 10-24 x 1 1/2 Rd. Hd	2
17	WL-6-7	Lock Washer 10 Medium	2
18	NS-11-18	Mach. Nut 10-24 Hex	2
19	FE-6-7	Lock Nut 1/2 Conduit	AR
20	FE-22-12	Nipple 1/2 x 1 1/8 Lg. (T.B.E.)	1
21	222921-2	Unilet (Type "LL")	1
22	FE-4-48	Cover - Unilet Tee	1
23	FE-8-47	Gasket	1
24	SC-21-22	Mach. Screw 10-24 x 3/8 Rd. Hd	2
25	WS-28-8	Washer	2
26	WL-6-7	Lock Washer 10 Medium	2
27	NS-11-18	Mach. Nut 10-24 Hex	2
28	FE-22-15	Connector - Straight (1/2 Male Thd. x 1/2 Flex. Cnd.)	1
29	FE-18-35	Clamp 3/4 Conduit	1
30	SC-21-39	Mach. Screw 1/4-20 x 5/8 Rd. Hd	1
31	WL-6-17	Lock Washer 1/4 Medium	1
32	222983-4	Conduit 1/2" x 84" Flex	1
33	222983-12	Conduit 1/2" x 72" Flex	1
34	FE-22-18	Connector 90° (1/2 Male Thd. x 1/2 Flex. Cnd.)	1
35	FE-22-18	Connector 90° (1/2" Male Thd. x 1/2 Flex. Cnd.)	1
36	222983-5	Conduit 1/2" x 72" Flex	1
37	222983-12	Conduit 1/2" x 90° Flex	1
38	223812	Box - Reed Switch	1
39	SC-21-13	Mach. Screw 8-32 x 1/4 Rd. Hd	4
40	SC-98-6	Mach. Screw 10-24 x 1 3/4 Rd. Hd	2
41	FE-22-18	Connector 90° (1/2 Male Thd. x 1/2 Flex. Cnd.)	1
42	288961	Housing - Safety Switch	1
43	288963	Gasket	1
44	288457-2	Switch & Cover Assy	1
45	SC-21-15	Mach. Screw 8-32 x 1/2 Rd. Hd	2
46	222326-3	Spacer	1
47	223304	Retainer - Magnet	1
48	111941	Magnet	1
49	RS-30-8	Rivet 1/8 Domed Hd	2
	222940	Magnet & Mtg. Clip Assy. (Incls. items 1, 2, 3 & 4)	1

**PULPER HOUSING UNIT
(FREE STANDING MODELS ONLY)**

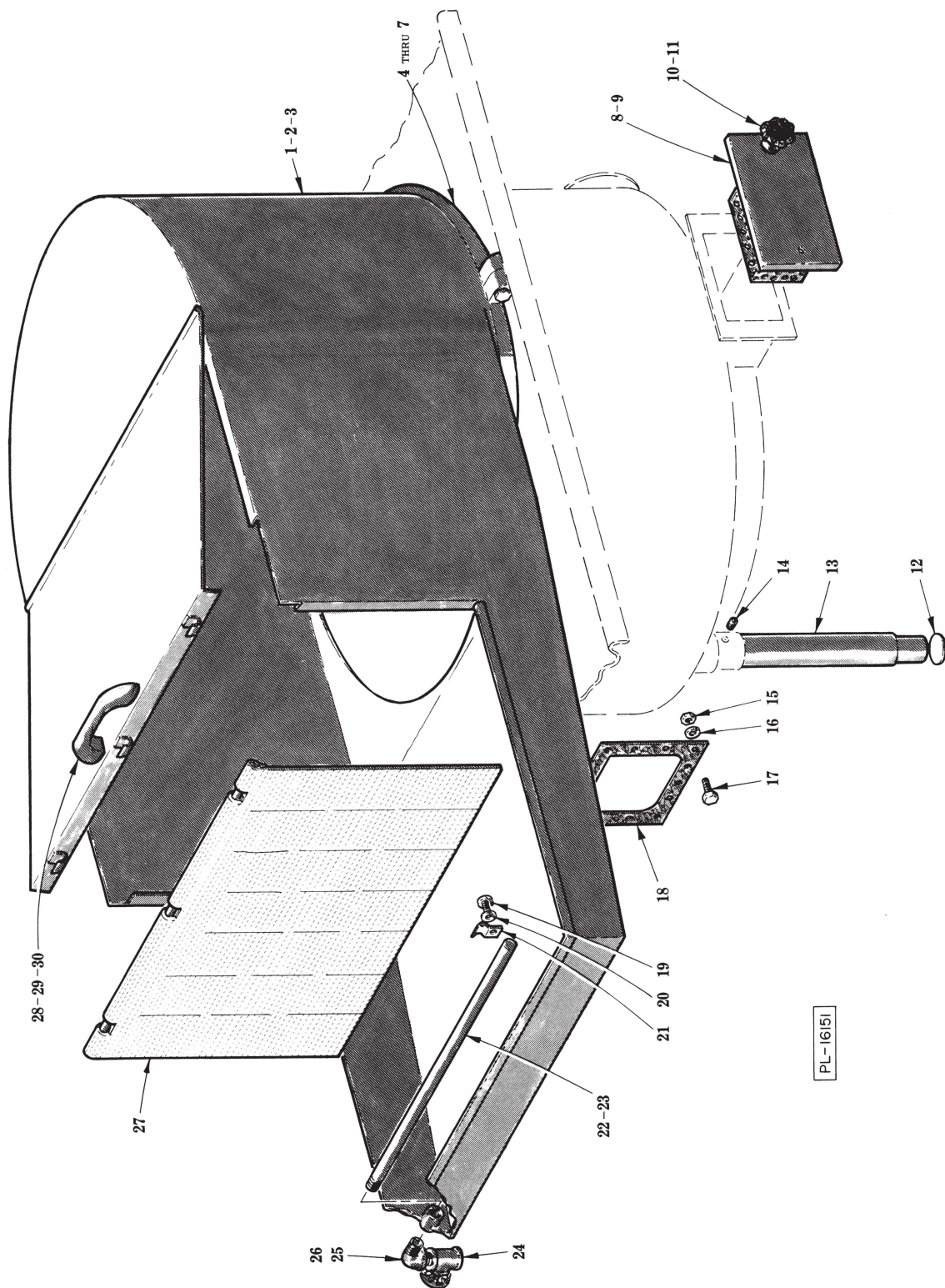
ILLUS. PL-16360	PART NO.	NAME OF PART ³¹	AMT.
1	216746	Feed Hood & Tray	1
2	222933-1	Feed Hood & Tray (With Fresh Water Rinse) (R. to L.) (Incls. items 1 & 15 thru 22)	1
3	222933-2	Feed Hood & Tray (With Fresh Water Rinse) (L. to R.) (Incls. items 1 & 15 thru 22)	1
4	222569-2	Retainer - Feed Hood	1
5	SC-112-76	Cap Screw $\frac{5}{16}$ -18 x 2 $\frac{3}{4}$ Hex Hd	1
6	WS-26-2	Washer	1
7	223549-1	Gasket $\frac{1}{8}$ x $\frac{3}{4}$	1
8	223660	Trash Box Cover Assy. (Incls. items 9, 10 & 11)	1
9	223659	Gasket	1
10	216601	Knob Assy	2
11	RR-6-23	Retaining Ring	2
12	223063-3	Pad - Vibration	4
13	223203-2	Leg & Floor Flange Assy	4
14	SC-46-63	Set Screw $\frac{3}{8}$ -16 x $\frac{1}{4}$ Hdls., Cup Pt	4
15	SC-21-23	Mach. Screw 10-24 x $\frac{1}{2}$ Rd. Hd	1
16	WL-6-7	Lock Washer 10 Medium	1
17	223212-1	Clamp $\frac{1}{2}$ " Pipe	1
18	222934-1	$\frac{1}{2}$ " Rinse Pipe (T.O.E.)	1
19	223515	Nozzle	4
20	FP-77-37	Valve $\frac{1}{2}$ Globe	1
21	FP-15-17	Elbow $\frac{1}{2}$ x 90° Street	1
22	FP-40-42	Nipple $\frac{1}{2}$ x 1 $\frac{1}{8}$ Lg. (T.B.E.)	1
23	222244-1	Curtain & Rod Assy	2
24	222559	Handle	1
25	SC-21-22	Mach. Screw 10-24 x $\frac{3}{8}$ Rd. Hd	2
26	WL-14-7	Lock Washer 10 Ext. Shakeproof	2



**PULPER HOUSING UNIT
(UNDER COUNTER MODELS ONLY)**

**PULPER HOUSING UNIT
(UNDER COUNTER MODELS ONLY)**

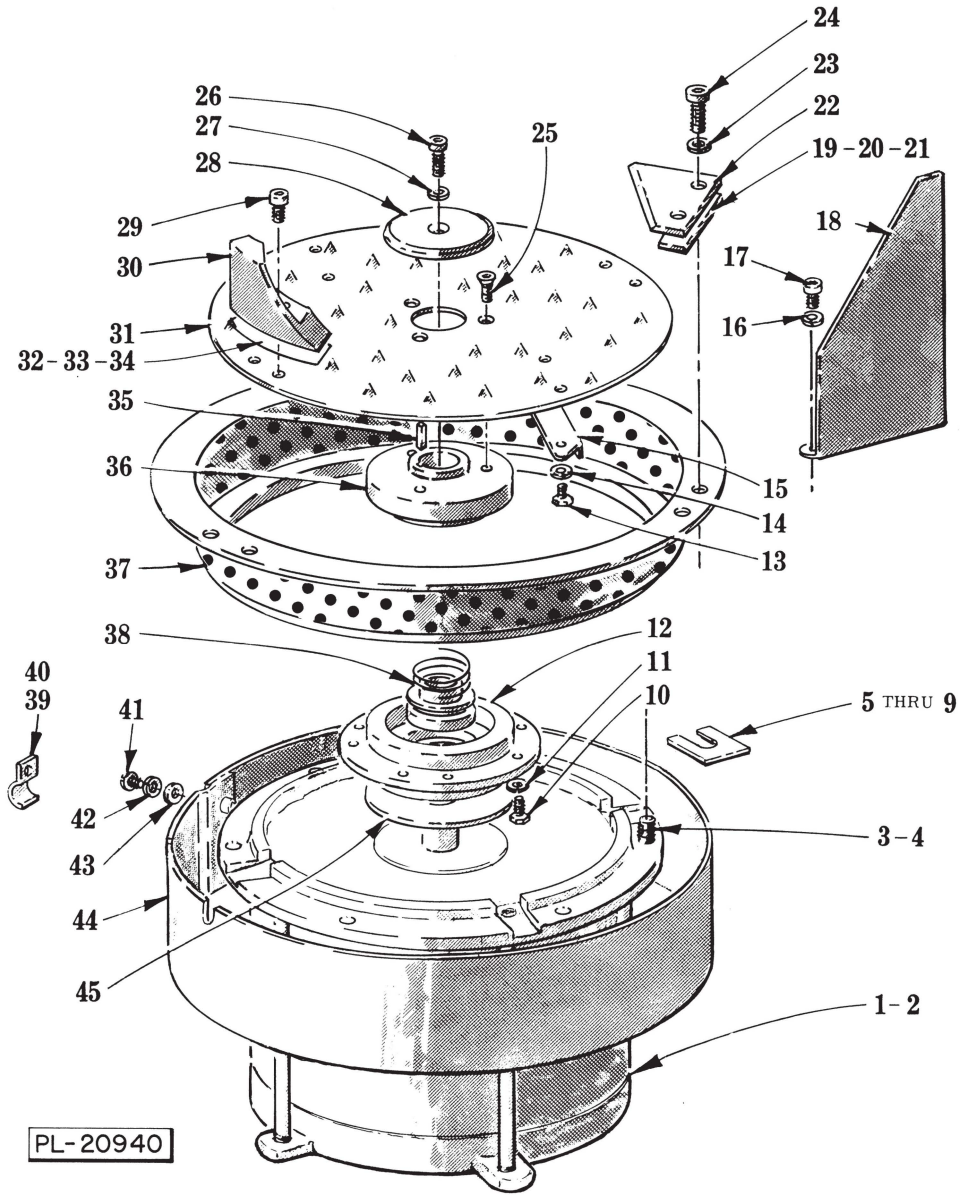
ILLUS. PL-16150	PART NO.	NAME OF PART ₃₁	AMT.
1	287879-1	Feed Hood Assy. (Single Opening)	1
2	287879-2	Feed Hood Assy. (Double Opening)	1
3	223660	Trash Box Cover Assy. (Incls. items 4, 5 & 6)	1
4	223659	Gasket	1
5	216601	Knob & Gasket	2
6	RR-6-23	Retaining Ring	2
7	SC-46-63	Set Screw $\frac{3}{8}$ -16 x $\frac{1}{4}$ Hdls., Cup Pt	4
8	223203-1	Leg & Foot Assy	4
9	223063-2	Pad - Vibration	4
10	NS-15-1	Full Nut $\frac{1}{4}$ -20 Hex	11
11	WL-6-17	Lock Washer $\frac{1}{4}$ Medium	11
12	SC-41-1	Cap Screw $\frac{1}{4}$ -20 x $\frac{3}{4}$ Hex Hd	11
13	222974-1	Gasket - Trough (Under Counter Models With Trough)	1
14	222243-4	Curtain & Rod Assy. (Single Opening Feed Hood)	1
15	222243-4	Curtain & Rod Assy. (Double Opening Feed Hood)	2
16	287855	Cover Plate (Under Counter Models With Trough)	1



**PULPER HOUSING UNIT
(UNDER COUNTER MODELS WITH RECIRCULATING PUMP)**

**PULPER HOUSING UNIT
(UNDER COUNTER MODELS WITH RECIRCULATING PUMP)**

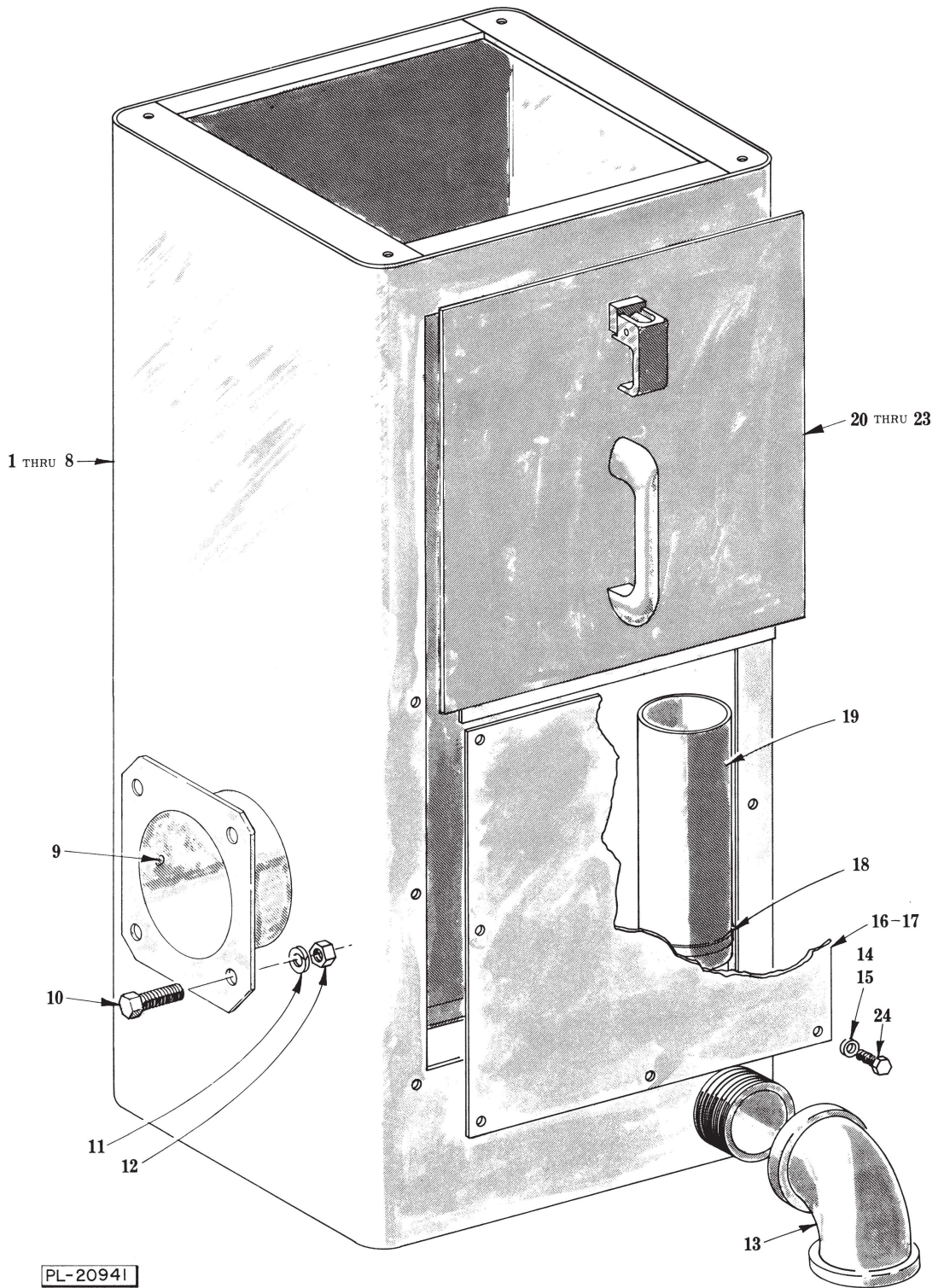
ILLUS. PL-16151	PART NO.	NAME OF PART ³¹	AMT.
1	216746	Feed Hood & Tray	1
2	222933-1	Feed Hood & Tray (R. to L.) (With Fresh Water Rinse) (Incls. items 1 & 19 thru 26)	1
3	222933-2	Feed Hood & Tray (L. to R.) (With Fresh Water Rinse) (Incls. items 1 & 19 thru 26)	1
4	222569-2	Retainer - Feed Hood	1
5	SC-112-76	Cap Screw $\frac{5}{16}$ -18 x $2\frac{3}{4}$ Hex Hd	1
6	WS-26-2	Washer	1
7	223549-1	Gasket $\frac{1}{8}$ x $\frac{3}{4}$	1
8	223660	Trash Box Cover Assy. (Incls. items 9, 10 & 11)	1
9	223659	Gasket	1
10	216601	Knob & Stud	2
11	RR-6-23	Retaining Ring	2
12	223063-2	Pad - Vibration	4
13	223203-1	Leg & Foot Assy	4
14	SC-46-63	Set Screw $\frac{3}{8}$ -16 x $\frac{1}{4}$ Hdls., Cup Pt	4
15	NS-15-1	Full Nut $\frac{1}{4}$ -20 Hex	11
16	WL-6-17	Lock Washer $\frac{1}{4}$ Medium	11
17	SC-41-1	Cap Screw $\frac{1}{4}$ -20 x $\frac{3}{4}$ Hex Hd	11
18	222974-1	Gasket - Trough	1
19	SC-21-23	Mach. Screw 10-24 x $\frac{1}{2}$ Rd. Hd	1
20	WL-6-7	Lock Washer 10 Medium	1
21	223212-1	Clamp - $\frac{1}{2}$ Pipe	1
22	222934-1	$\frac{1}{2}$ Rinse Pipe (T.O.E.)	1
23	223515	Nozzle	4
24	FP-77-37	Valve - $\frac{1}{2}$ Globe	1
25	FP-15-17	Elbow - $\frac{1}{2}$ x 90° Street	1
26	FP-40-42	Nipple - $\frac{1}{2}$ x $1\frac{1}{8}$ Lg. (T.B.E.)	1
27	222244-1	Curtain & Rod Assy	2
28	222559	Handle	1
29	SC-21-22	Mach. Screw 10-24 x $\frac{3}{8}$ Rd. Hd	2
30	WL-14-7	Lock Washer 10 Ext. Shakeproof	2



PULPER MOTOR UNIT

PULPER MOTOR UNIT

ILLUS. PL-20940	PART NO.	NAME OF PART ³¹	AMT.
1	223380-1	Motor (200 V., 60 Hz.)	1
2	223380-2	Motor (230/460 V., 60 Hz.; 200 V., 50 Hz.)	1
3	SC-41-44	Cap Screw 1/2-13 x 1 1/4 Hex Hd	6
4	WL-6-35	Lock Washer 1/2 Medium	6
5	222353-4	Shim - Motor (.037" Thk.)	AR
6	222353-5	Shim - Motor (.062" Thk.)	AR
7	222353-6	Shim - Motor (.013" Thk.)	AR
8	222353-7	Shim - Motor (.0095" Thk.)	AR
9	222353-8	Shim - Motor (.009" Thk.)	AR
10	SC-41-1	Cap Screw 1/4-20 x 3/4 Hex Hd	4
11	WL-6-17	Lock Washer 1/4 Medium	4
12	216895-3	Retainer - Seal	1
13	SC-41-26	Cap Screw 3/8-16 x 1/2 Hex Hd	4
14	WL-6-28	Lock Washer 3/8 Medium	4
15	216933-2	Vane - Pumping	2
16	WL-6-17	Lock Washer Medium	6
17	SC-59-28	Cap Screw 1/4-20 x 3/8 Soc. Fil. Hd	6
18	216897-1	Baffle	3
19	222343-1	Shim - Retarder (.037" Thk.)	AR
20	222343-2	Shim - Retarder (.062" Thk.)	AR
21	222343-5	Shim - Retarder (.005" Thk.)	AR
22	270479	Retarder	3
23	WL-6-28	Lock Washer 3/8 Medium	6
24	SC-59-38	Cap Screw 3/8-16 x 1 1/4 Soc. Fil. Hd	6
25	SC-110-36	Cap Screw 3/8-16 x 1 Soc. Flat Hd	3
26	SC-59-36	Cap Screw 3/8-16 x 1 Soc. Fil. Hd	1
27	WL-6-28	Lock Washer 3/8 Medium	1
28	216929-3	Cap	1
29	SC-59-61	Cap Screw 3/8-16 x 5/8 Soc. Fil. Hd	4
30	270346	Pulsing Vane Assy	2
31	216491	Pulping Disc Assy. (Rotating)	1
32	223385-4	Shim - Pulsing Vane (.010" Thk.)	AR
33	223385-5	Shim - Pulsing Vane (.030" Thk.)	AR
34	223385-6	Shim - Pulsing Vane (.060" Thk.)	AR
35	222271-8	Key	1
36	289344-2	Hub	1
37	291947-1	Sizing Ring	1
38	223422	Seal - Mechanical	1
39	FE-18-35	Clamp 3/4 Conduit	1
40	FE-18-24	Clamp 1/2 Conduit	1
41	SC-21-22	Mach. Screw 10-24 x 3/8 Rd. Hd	7
42	WL-6-7	Lock Washer 10 Medium	7
43	WS-28-8	Washer	7
44	223199-1	Motor Splash Guard Assy	1
45	222376-7	Gasket - 6" O.D	1



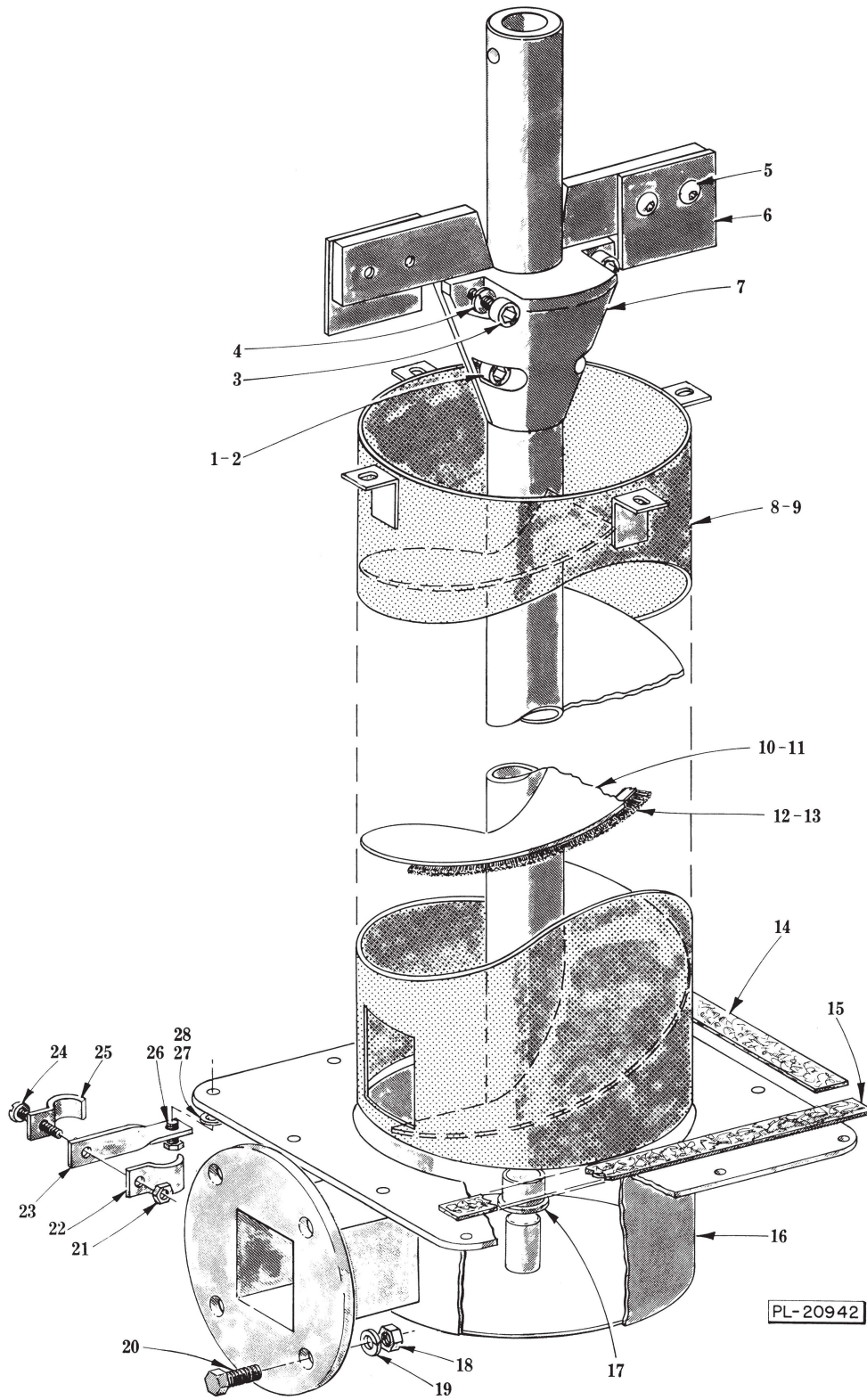
PL-20941

WATER PRESS HOUSING UNIT

WATER PRESS HOUSING UNIT

ILLUS. PL-20941	PART NO.	NAME OF PART ³¹	AMT.
1	216025-1	R.H. Shell	1
*2	222923-1	R.H. Shell Assy	1
3	216351-1	L.H. Shell (Not Shown)	1
*4	222922-1	L.H. Shell Assy. (Not Shown)	1
5	216027	R.H. Shell (Hi-Profile)	1
*6	222923-3	R.H. Shell Assy. (Hi-Profile)	1
7	216352	L.H. Shell (Hi-Profile)	1
*8	222922-2	L.H. Shell Assy. (Hi-Profile)	1
9	FP-28-7	Plug 1/4 Sq. Hd. Pipe	1
10	SC-41-30	Cap Screw 3/8-16 x 1 Hex Hd	4
11	WL-6-28	Lock Washer 3/8 Medium	4
12	NS-15-13	Full Nut 3/8-16 Hex	4
13	FP-14-37	Elbow 2 x 90°	1
14	WL-6-17	Lock Washer 1/4 Medium	AR
15	WS-17-6	Washer - Sealing	AR
16	222194-3	Cover (Stationary) (Standard)	1
17	222006-1	Cover (Stationary) (Hi-Profile)	1
18	222565-3	Clamp - Tube	1
19	222434-3	Tube (Overflow)	1
20	216069	Removable Cover Assy. (Standard) (Incls. item 22)	1
21	216071	Removable Cover Assy. (Hi-Profile) (Incls. item 23)	1
22	222953-1	Access Cover & Gasket (Standard)	1
23	222953-2	Access Cover & Gasket (Hi-Profile)	1

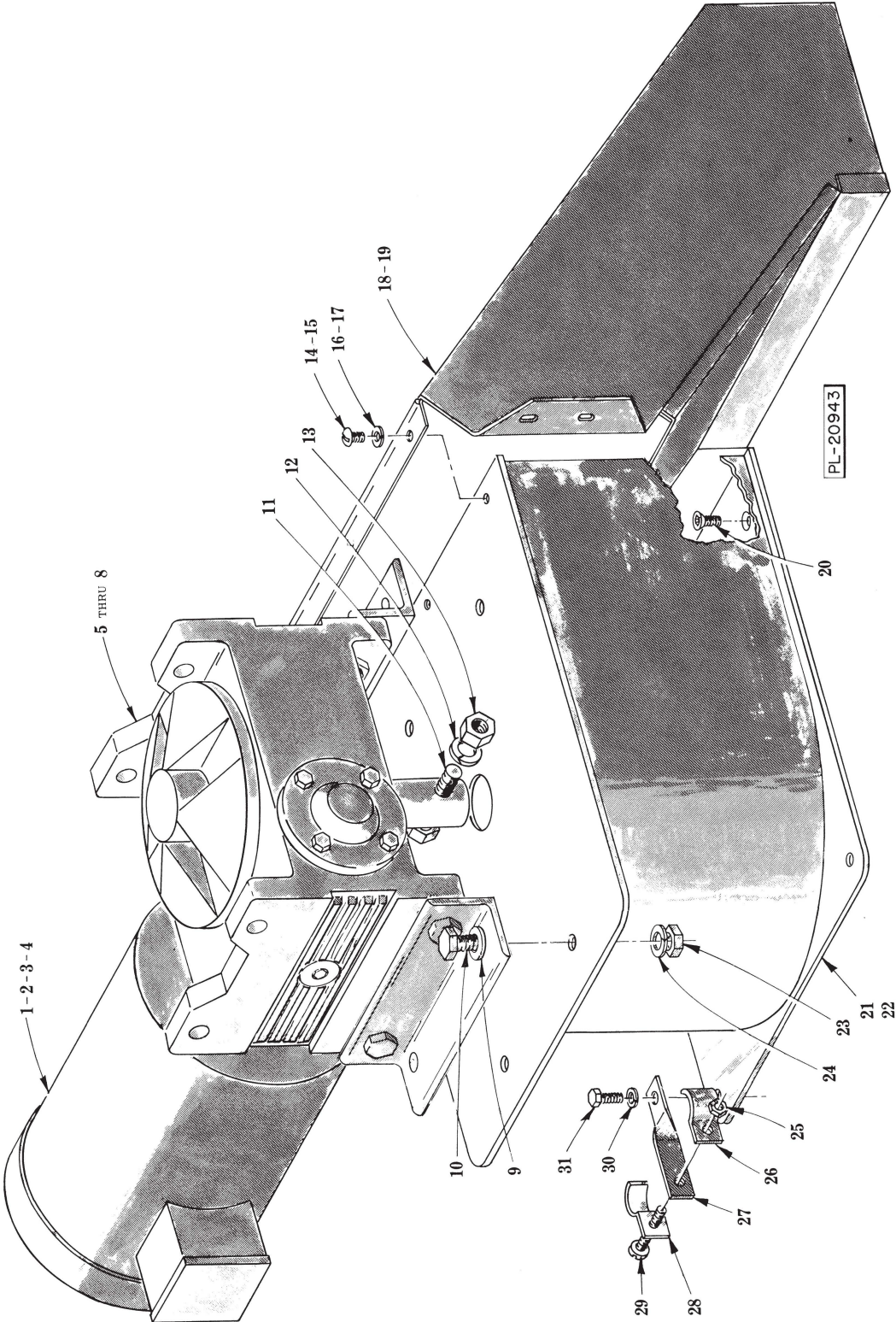
*Use with Recirculating Pump.



WATER PRESS SCREW UNIT

WATER PRESS SCREW UNIT

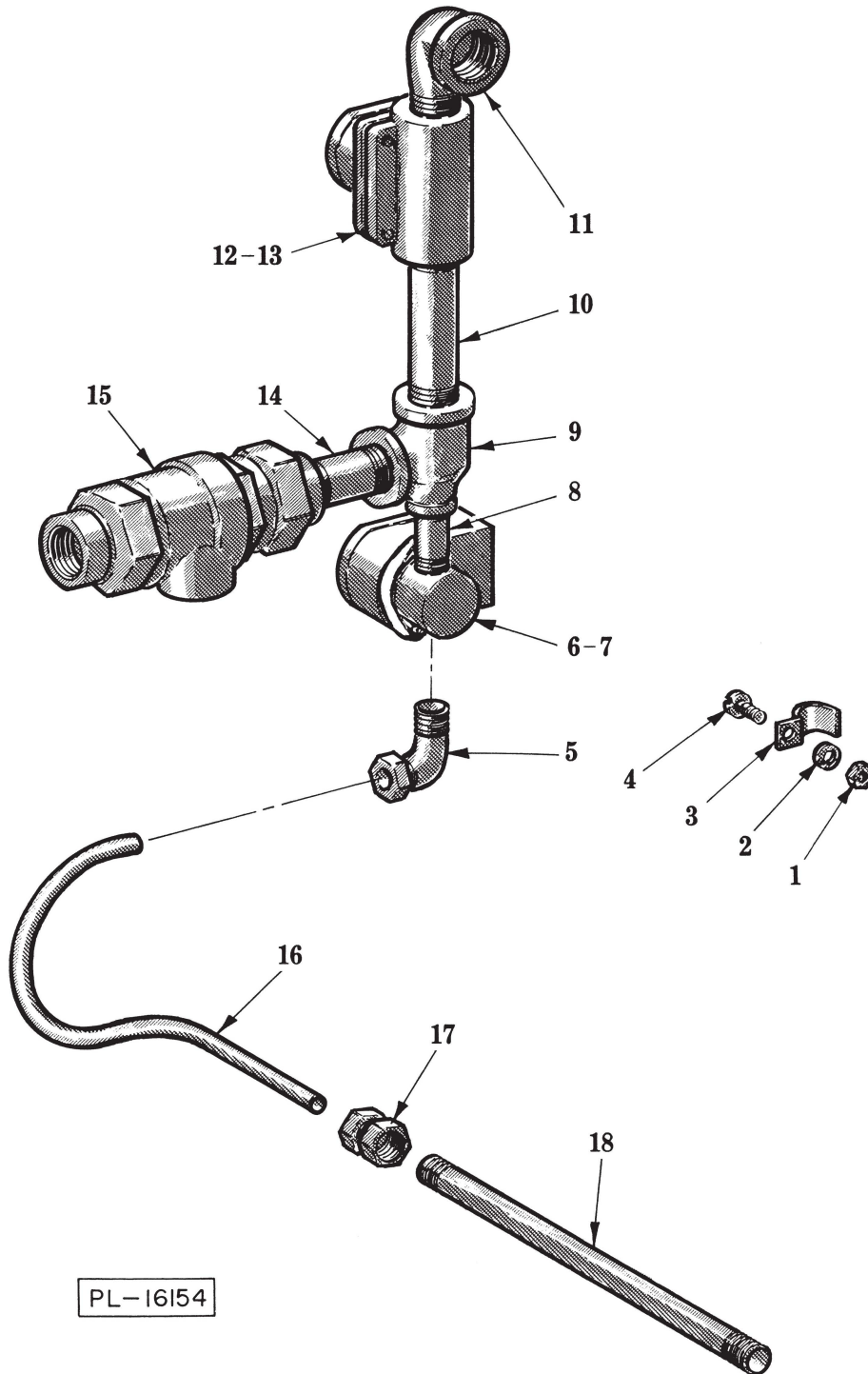
ILLUS. PL-20942	PART NO.	NAME OF PART ³¹	AMT.
1	SC-59-15	Cap Screw 10-24 × 1 Soc. Fil. Hd	2
2	WL-6-7	Lock Washer 10 Medium	2
3	SC-59-30	Cap Screw ¼-20 × 1 Soc. Fil. Hd	2
4	WL-6-17	Lock Washer ¼ Medium	2
5	SC-76-2	Cap Screw ¼-20 × ⅝ Soc. Button Hd	4
6	222361-1	Plate - Wiper	2
7	222419-1	Cone - Compression	1
8	216016	Screen (Std.)	1
9	216018	Screen (Hi-Profile)	1
10	216045	Screw (Std.) (Incls. items 12 & 17)	1
11	216047	Screw (Hi-Profile) (Incls. items 13 & 17)	1
12	222562-6	Brush - Screw (Std.)	1
13	222562-8	Brush - Screw (Hi-Profile)	1
14	222968-3	Gasket ⅛ × 1 × 8½	2
15	222968-4	Gasket ⅛ × 1 × 10½	2
16	216031	Slurry Inlet	1
17	222424-1	Bearing - Screw (Oilless)	1
18	NS-15-13	Full Nut ⅜-16 Hex	4
19	WL-6-28	Lock Washer ⅜ Medium	4
20	SC-41-30	Cap Screw ⅜-16 × 1 Hex Hd	4
21	NS-15-1	Full Nut ¼-20 Hex	1
22	FE-18-35	Clamp ¾ Conduit	1
23	222431-1	Bracket - Conduit Clamp	1
24	SC-21-39	Mach. Screw ¼-20 × ⅝ Rd. Hd	1
25	FE-18-35	Clamp ¾ Conduit	1
26	SC-41-5	Cap Screw ¼-20 × ⅝ Hex Hd	12
27	WS-17-6	Washer - Sealing	12
28	WL-6-17	Lock Washer ¼ Medium (Use with item 27)	12
	216257-1	Compression Cone (Incls. items 1, 2, 3, 4, 5, 6 & 7)	1



DISCHARGE UNIT

DISCHARGE UNIT

ILLUS. PL-20943	PART NO.	NAME OF PART ³¹	AMT.
1	223471-1	Motor - Water Press (200 V., 60 Hz.)	1
2	223471-2	Motor - Water Press (230/460 V., 60 Hz.; 200 V., 50 Hz.)	1
3	SC-36-54	Cap Screw $\frac{3}{8}$ -16 x 1 Hex Hd	4
4	WL-4-3	Lock Washer $\frac{3}{8}$ Medium	4
5	292018-1	Gear - Reducer (L-R) (Incls. items 7 & 8)	1
6	292018-2	Gear - Reducer (R-L) (Incls. items 7 & 8)	1
7	223728	Seal - Oil (Input Shaft)	1
8	223729	Seal - Oil (Output Shaft)	1
9	WS-18-37	Washer	4
10	SC-41-30	Cap Screw $\frac{3}{8}$ -16 x 1 Hex Hd	4
11	SC-37-43	Cap Screw $\frac{1}{2}$ -13 x $2\frac{1}{2}$ Hex Hd	1
12	WL-6-35	Lock Washer $\frac{1}{2}$ Medium	1
13	NS-15-20	Full Nut $\frac{1}{2}$ -13 Hex	1
14	SC-67-27	Mach. Screw $\frac{1}{4}$ -20 x $\frac{3}{8}$ Rd. Hd. (Stud. Chute)	2
15	SC-67-27	Mach. Screw $\frac{1}{4}$ -20 x $\frac{3}{8}$ Rd. Hd. (Thru Wall Chute)	4
16	WL-6-17	Lock Washer $\frac{1}{4}$ Medium (Std. Chute)	2
17	WL-6-17	Lock Washer $\frac{1}{4}$ Medium (Thru Wall Chute)	4
18	291904-1	Discharge Chute (Std.)	1
19	222726	Discharge Chute (Thru Wall Chute)	1
20	SC-110-34	Cap Screw $\frac{1}{4}$ -20 x $\frac{1}{2}$ Soc. Flat Hd	2
21	216041-1	Discharge Housing (Std. Chute)	1
22	216041-2	Discharge Housing (Thru Wall Chute)	1
23	NS-15-13	Full Nut $\frac{3}{8}$ -16 Hex	4
24	WL-6-28	Lock Washer $\frac{3}{8}$ Medium	4
25	NS-15-1	Full Nut $\frac{1}{4}$ -20 Hex	1
26	FE-18-35	Clamp $\frac{3}{4}$ Conduit	1
27	222431-1	Bracket - Conduit Clamp	1
28	FE-18-35	Clamp $\frac{3}{4}$ Conduit	1
29	SC-21-39	Mach. Screw $\frac{1}{4}$ -20 x $\frac{5}{8}$ Rd. Hd	1
30	WL-6-17	Lock Washer $\frac{1}{4}$ Medium	2
31	SC-41-5	Cap Screw $\frac{1}{4}$ -20 x $\frac{5}{8}$ Hex Hd	2

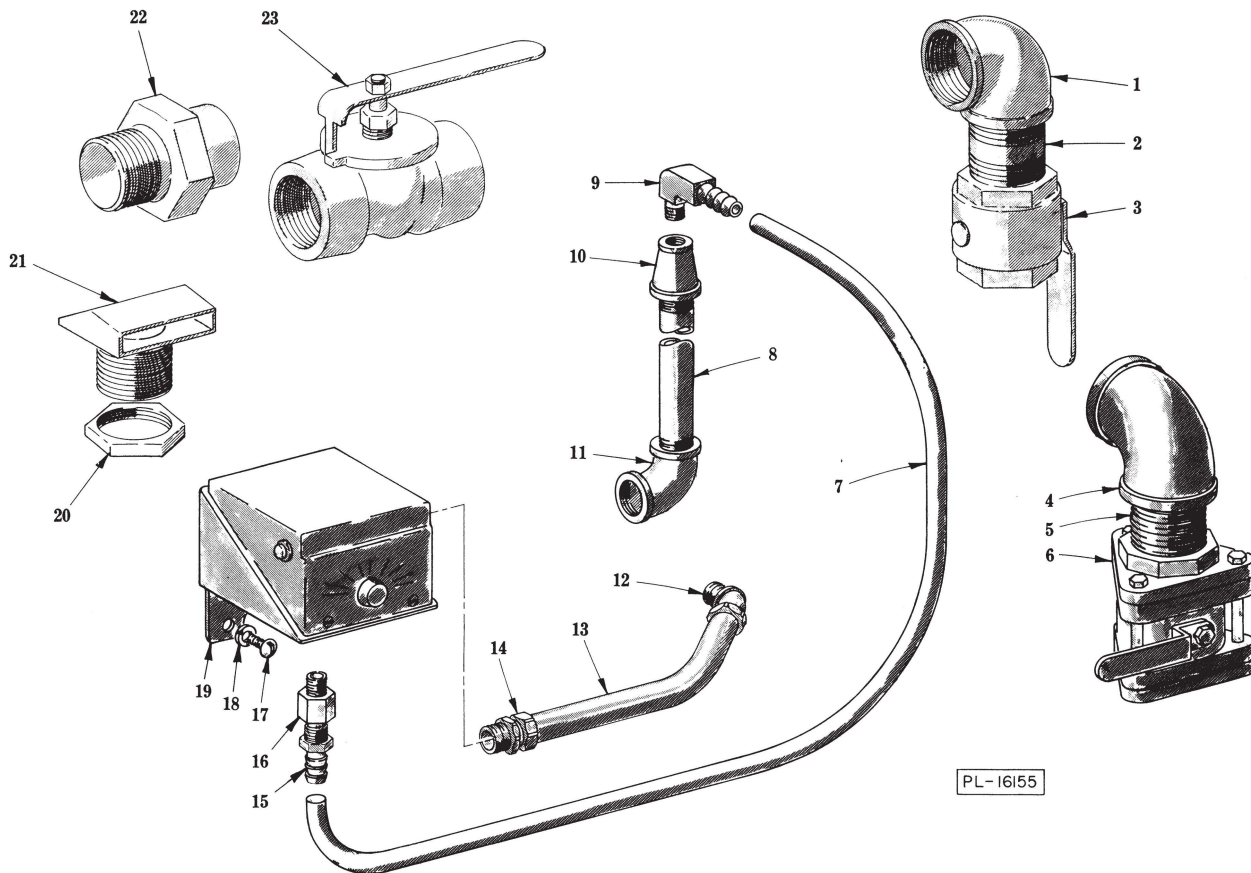


FRESH WATER AND SEAL FLUSH SUPPLY LINES

FRESH WATER AND SEAL FLUSH SUPPLY LINES

ILLUS. PL-16154	PART NO.	NAME OF PART ³¹	AMT.
*1	NS-15-1	Full Nut-20 Hex	1
*2	WL-6-17	Lock Washer 1/4 Medium	1
*3	FE-18-35	Clamp 3/4 Conduit	1
*4	SC-21-38	Mach. Screw 1/4-20 x 1/2 Rd. Hd	1
5	FP-47-24	Elbow 90° (1/4 Male Pipe x 1/4 Tube)	1
6	223650	Solenoid Valve 1/4 (Incls. item 7)	1
7	223651	Coil - Solenoid Valve	1
8	FP-40-9	Nipple 1/4 x 1 1/4 Lg. (T.B.E.)	1
9	FP-69-14	Tee 1/2 x 1/4 x 1/2 Reducing	1
10	FP-40-62	Nipple 1/2 x 3 Lg. (T.B.E.)	1
11	FP-15-17	Ell 1/2 x 90° Street	1
12	223461	Solenoid Valve 1/2" (Incls. item 13)	1
13	223651	Coil - Solenoid Valve	1
14	FP-40-45	Nipple 1/2 x 1 1/2 Lg. (T.B.E.)	1
15	223472	Preventor - Back Flow	1
16	223356-1	Tube 1/4	1
17	FP-12-10	Connector - Straight (1/8 Female Thd. x 1/4 Tube)	1
18	FP-40-6	Nipple 1/8 x 7 1/2 Lg. (T.B.E.)	1
	222949-3	Kit - Repair for 1/2" Solenoid Valve	1
	223652	Kit - Repair for 1/4" Solenoid Valve	1

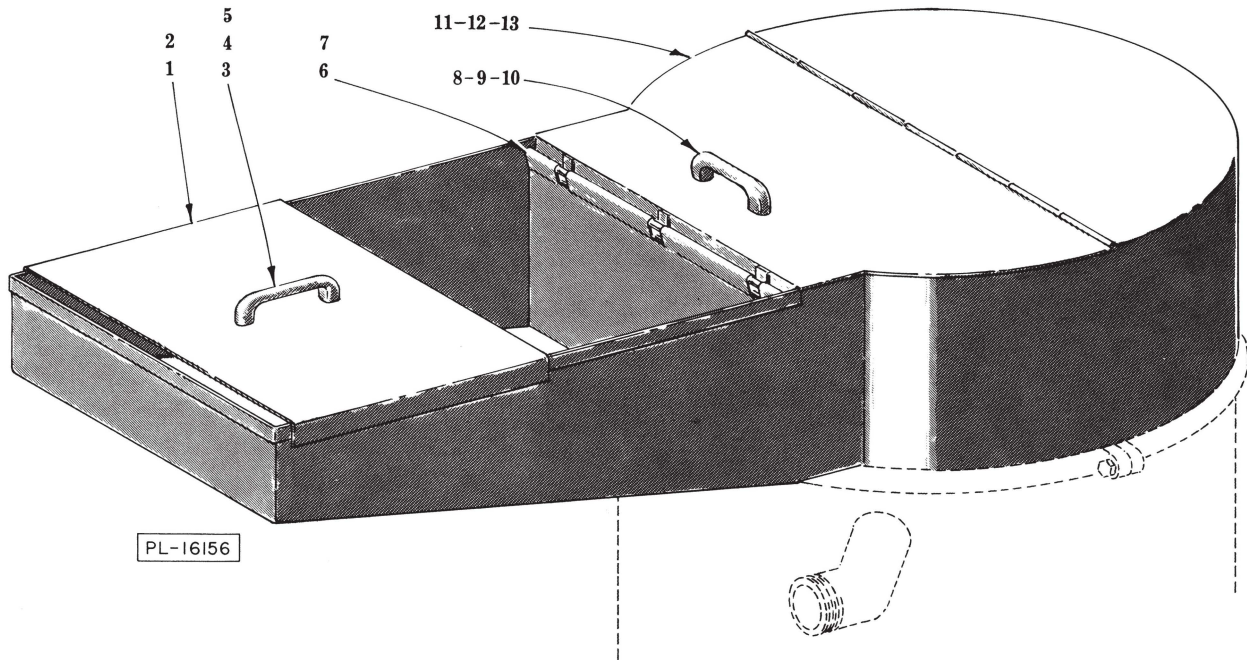
*Under Counter W/Feed Trough & W/O Recirculating Pump.



MICELLANEOUS

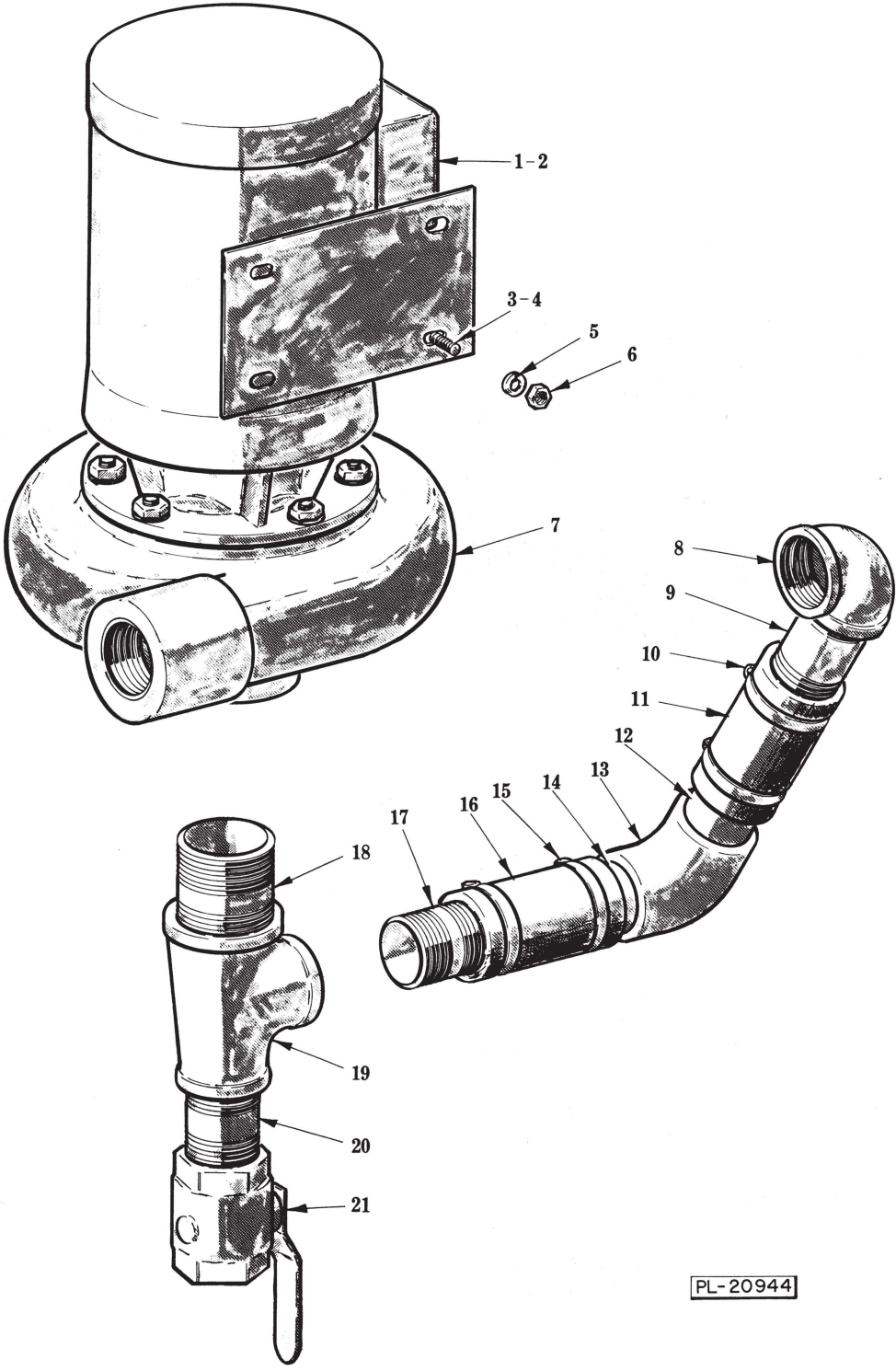
ILLUS.	PART NO.	NAME OF PART ³¹	AMT.
PL-16155	1	Elbow 1½ × 90°	1
	2	Nipple 1½ × 1¾ Lg. (T.B.E.)	1
	3	Ball Valve 1½	1
	4	Elbow 1½ × 90°	1
	5	Nipple 1½ × 1¾ Lg. (T.B.E.)	1
	6	Ball Valve 1½	1
	7	Tube (¼" I.D. × ⅜ O.D.) (Give Length)	AR
	8	Nipple ¾ × 8½ Lg. (T.B.E.)	1
	9	Hose Barb 90° (¼ Pipe × ¼ Hose)	1
	10	Coupling (¾ to ¼ Reducing)	1
	11	Elbow ¾ × 90°	1
	*12	Connector 45° (½ Male Thd. × ⅜ Flex. Cnd.)	1
	*13	Conduit ⅜ × 9 Flex	1
	*14	Connector - Straight (½ Male Thd. × ⅜ Flex. Cnd.)	1
	15	Hose Barb - Straight (¼ Pipe × ¼ Hose)	1
	16	Snubber	1
	*17	Mach. Screw ¼-20 × ½ Rd. Hd	2
	*18	Lock Washer ¼ Medium	2
	19	Pressure Switch	1
	20	Lock Nut 1½ Pipe	1
	21	Trough Nozzle Assy	1
	22	Adpater 1½" Union	1
	23	Ball Valve 1½"	1

*Pressure Switch to Electric Supply Panel, Free Standing Units Only.



**PULPER HOUSING UNIT
(FEED HOOD & FLUSHING TRAY)**

ILLUS. PL-16156	PART NO.	NAME OF PART ³¹	AMT.
1	223428	Cover - Removable	1
2	523009	Gasket 1/8" x 3/4" (Give Length)	AR
3	222559	Handle - Removable Cover	1
4	SC-21-22	Mach. Screw 10-24 x 3/8 Rd. Hd	2
5	WL-14-7	Lock Washer 10 Ext. Shakeproof	2
6	222245-1	Curtain - Slatted (7 1/2" Height)	1
7	222244-1	Curtain - Slatted (14 1/8" Height) (Not Shown)	2
8	222559	Handle - Feed Hood	1
9	SC-21-22	Mach. Screw 10-24 x 3/8 Rd. Hd	2
10	WL-14-7	Lock Washer 10 Ext. Shakeproof	2
11	216684	Feed Hood/Flushing Tray Assy. (9" Height) (Incls. items 1, 2, 3, 4, 5, 6, 8, 9, 10 & 13)	1
12	223377-1	Feed Hood/Flushing Tray Assy. (16" Height) (Not Shown)	1
13	523009	Gasket 1/8" x 3/4" (Give Length)	AR

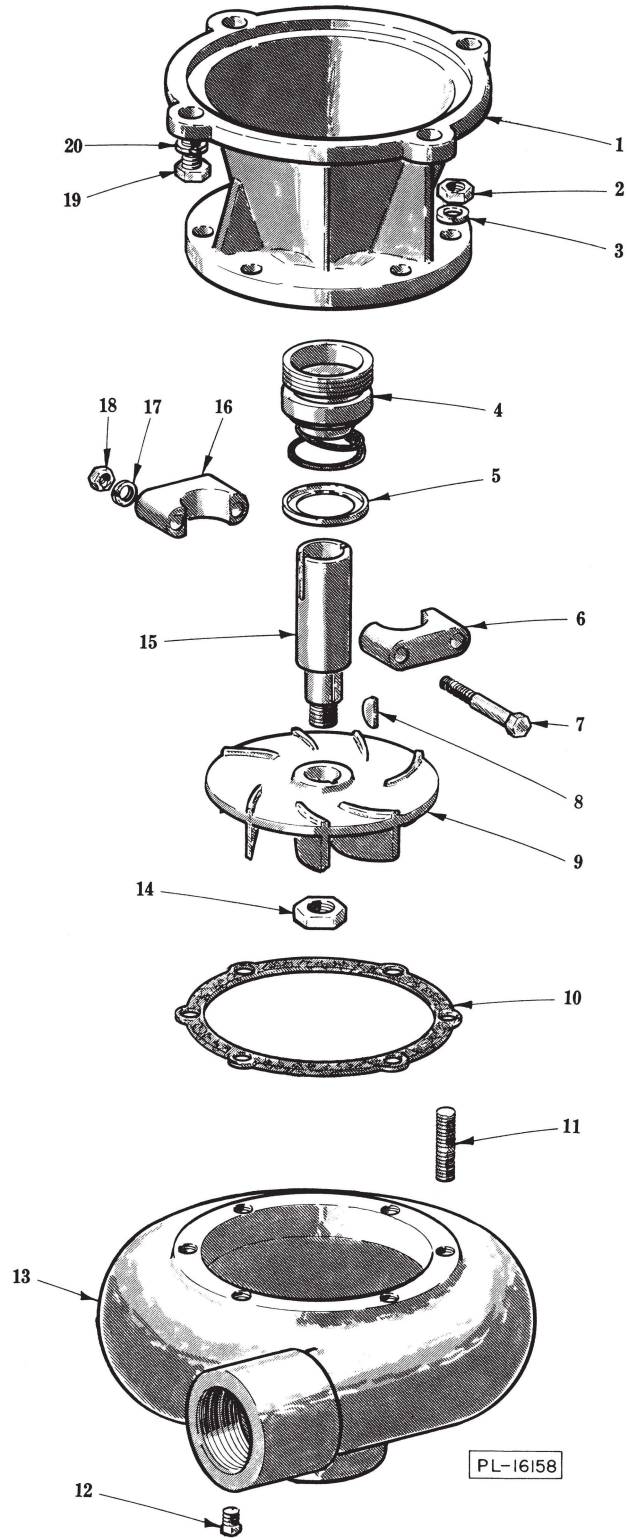


PL-20944

RECIRCULATING PUMP AND PIPING UNIT

RECIRCULATING PUMP AND PIPING UNIT

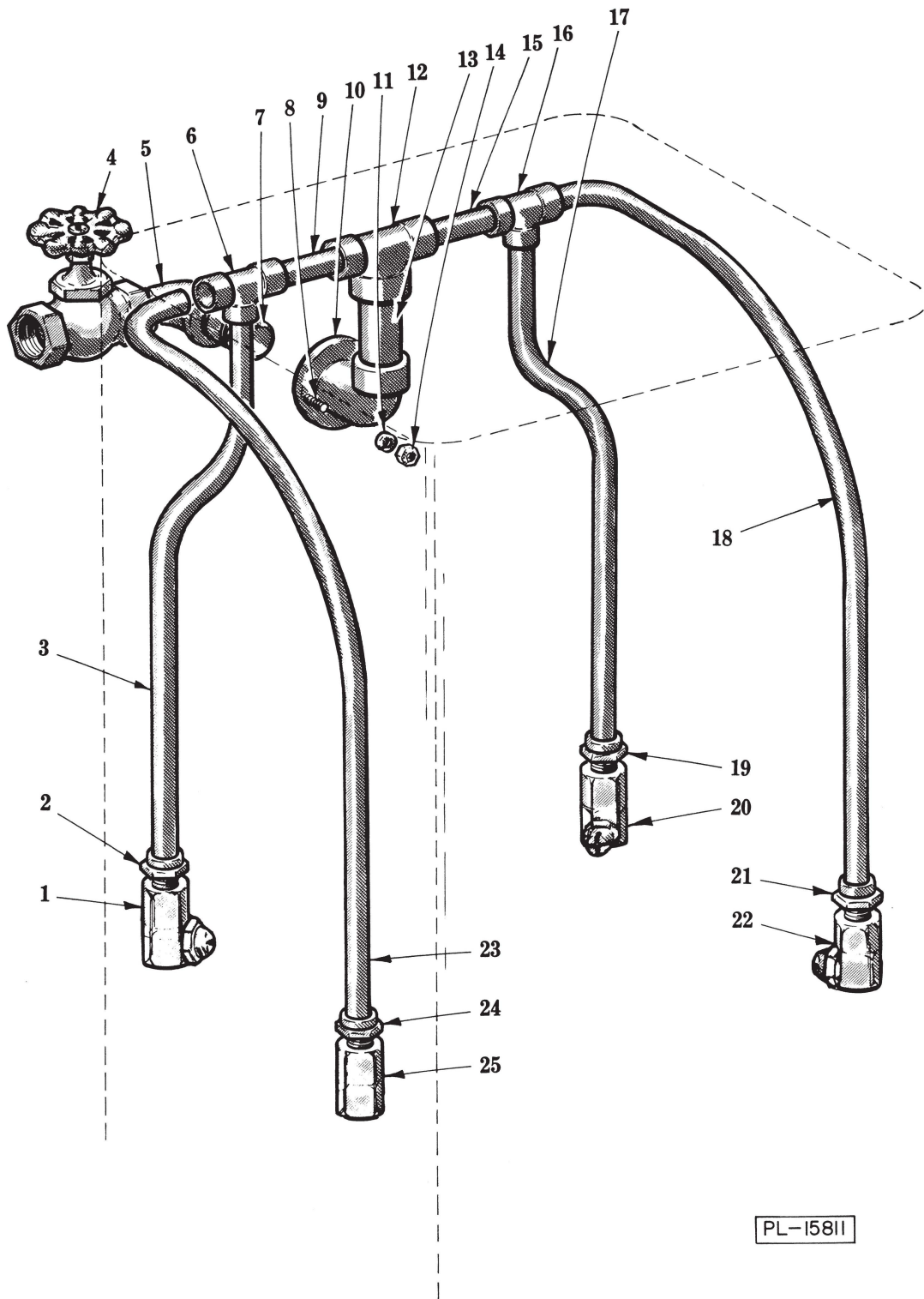
ILLUS. PL-20944	PART NO.	NAME OF PART ³¹	AMT.
1	223231-1	Motor (200 V., 60 Hz.)	1
2	223231-2	Motor (230/460 V., 60 Hz.)	1
3	SC-41-11	Cap Screw $\frac{5}{16}$ -18 x $\frac{3}{4}$ Hex Hd	4
4	WS-5-39	Washer	4
5	WL-6-23	Lock Washer $\frac{5}{16}$ Medium	4
6	NS-15-11	Full Nut $\frac{5}{16}$ -18 Hex	4
7	223474	Pump Assy	1
8	FP-14-31	Elbow $1\frac{1}{2}$ x 90°	1
9	222371-24	Nipple $1\frac{1}{2}$ x $4\frac{3}{4}$ Lg. (T.B.E.)	1
10	222565-3	Clamp - Tube	2
11	222434-5	Hose 2 x $4\frac{7}{8}$ Lg	1
12	223397-2	Tube $1\frac{1}{2}$ x $2\frac{5}{8}$ Lg	1
13	FP-72-2	Elbow $1\frac{1}{2}$ x 90°	1
14	223397-1	Tube $1\frac{1}{2}$ x $1\frac{7}{8}$ Lg	1
15	222565-3	Clamp - Tube	2
16	222434-4	Hose 2" x $3\frac{3}{8}$ Lg	1
17	222371-23	Nipple $1\frac{1}{2}$ " x $2\frac{3}{4}$ Lg. (T.B.E.)	1
18	FP-39-67	Nipple 2" x 2" Lg. (T.B.E.)	1
19	FP-77-60	Tee 2" x $1\frac{1}{2}$ " x $1\frac{1}{2}$ " Reducing	1
20	FP-39-58	Nipple $1\frac{1}{2}$ " x $1\frac{3}{4}$ " Lg. (T.B.E.)	1
21	287825-1	Valve $1\frac{1}{2}$ Ball	1



RECIRCULATING PUMP UNIT

RECIRCULATING PUMP UNIT

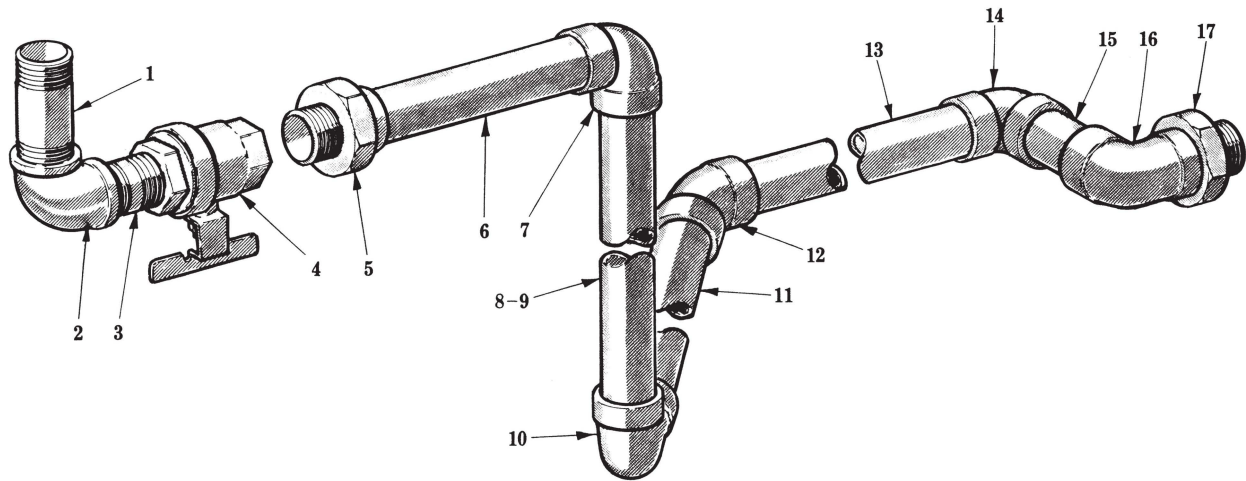
ILLUS. PL-16158	PART NO.	NAME OF PART ³¹	AMT.
1	223605-10	Adapter	1
2	NS-14-11	Full Nut $\frac{5}{16}$ -18 Hex	6
3	WL-5-32	Lock Washer $\frac{5}{16}$ Medium	6
4	223605-5	Seal Assy. (Incls. item 5)	1
5	223605-9	Retainer - Seal	1
6	223605-6	Clamp	1
7	SC-41-18	Cap Screw $\frac{5}{16}$ -18 x 1 $\frac{3}{4}$ Hex Hd	2
8	223605-2	Key - Impeller	1
9	222635-1	Impeller (For $\frac{1}{2}$ H.P. Motor)	1
10	223605-1	Gasket	1
11	223605-4	Stud $\frac{5}{16}$ -18	6
12	FP-28-3	Plug $\frac{1}{8}$ Sq. Hd. Pipe	1
13	223605-3	Housing - Pump	1
14	223605-7	Lock Nut - Impeller	1
15	223605-11	Sleeve - Drive	1
16	223605-6	Clamp	1
17	WL-6-23	Lock Washer $\frac{5}{16}$ Medium	2
18	NS-15-11	Full Nut $\frac{5}{16}$ -18 Hex	2
19	SC-41-29	Cap Screw $\frac{3}{8}$ -16 x $\frac{7}{8}$ Hex Hd	4
20	WL-6-28	Lock Washer $\frac{3}{8}$ Medium	4



SCREEN FLUSH UNIT

SCREEN FLUSH UNIT

ILLUS. PL-15811	PART NO.	NAME OF PART ₃₁	AMT.
1	223517	Nozzle - Spray (1/8" Thd.)	1
2	223505	Adapter - Male (1/4" Tube x 1/8" Male Pipe)	1
3	223367-4	Tube 1/4 x 6 1/2 Lg	1
4	FP-77-37	Valve 1/2 Globe	1
5	FP-15-17	Elbow 1/2 x 90° Street	1
6	223366-1	Tee 1/4" Tube	1
7	FP-40-45	Nipple 1/2 x 1 1/2 Lg. (T.B.E.)	1
8	SC-21-23	Mach. Screw 10-24 x 1/2 Rd. Hd	2
9	223367-2	Tube 1/4 x 1 1/2 Lg	1
10	223365-1	Elbow 90° (1/2" Tube x 1/2" Female Pipe)	1
11	WL-6-7	Lock Washer 10	2
12	223366-2	Tee 1/2" Tube x 1/4" Tube x 1/4" Tube Reducing	1
13	223367-1	Tube - 1/2" x 1 1/16" Lg	1
14	NS-11-18	Mach. Nut 10-24 Hex	2
15	223367-2	Tube 1/4 x 1 1/2" Lg	1
16	223366-1	Tee - 1/4" Tube	1
17	223367-4	Tube 1/4 x 6 1/2" Lg	1
18	223367-5	Tube - 1/4" x 14" Lg	1
19	2235-05	Adapter - Male (1/4" Tube x 1/8" Male Pipe)	1
20	223517	Nozzle - Spray (1/8" Tube)	1
21	223505	Adapter - Male (1/4" Tube x 1/8" Male Pipe)	1
22	223517	Nozzle - Spray (1/8" Thd.)	1
23	223367-5	Tube 1/4" x 14" Lg	1
24	223505	Adapter - Male (1/4" Tube x 1/8" Male Pipe)	1
25	223517	Nozzle - Spray (1/8" Thd.)	1

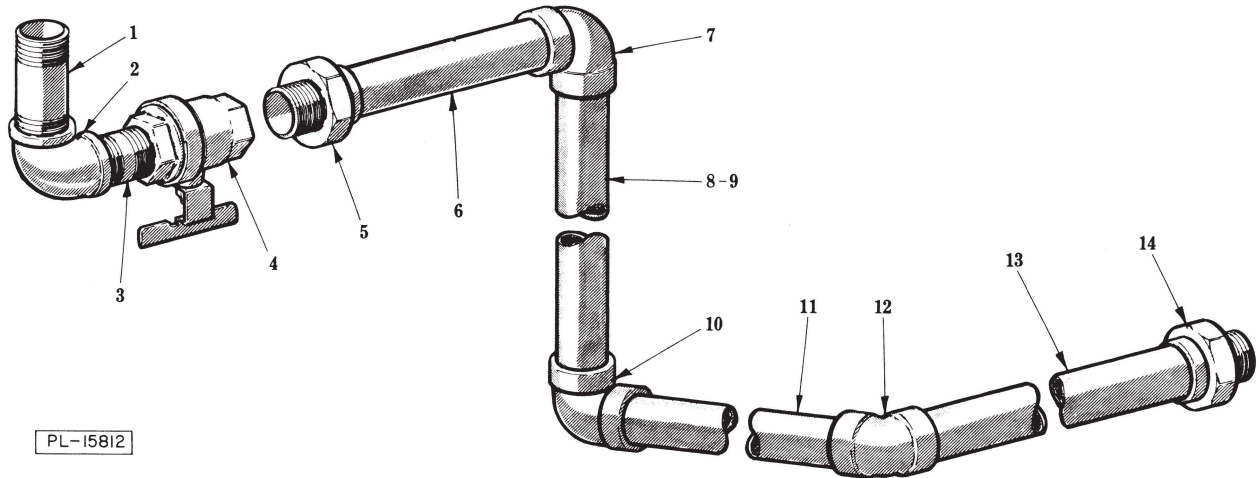


PL-15813

FLUSH TRAY PIPING UNIT (L-R)

FLUSH TRAY PIPING UNIT (L-R)

ILLUS. PL-15813	PART NO.	NAME OF PART ³¹	AMT.
1	FP-39-66	Nipple 1½ x 3½ Lg. (T.B.E.)	1
2	FP-14-31	Elbow 1½ x 90°	1
3	FP-39-58	Nipple 1½ x 1¾ Lg. (T.B.E.)	1
4	223220-1	Valve 1½" Ball	1
5	223506	Union (1½" Tube x 1½" Male Pipe)	1
6	223420-3	Tube 1½" x 7½" Lg	1
7	223504	Elbow 90° (1½" Tube x 1½" Tube)	1
8	223420-4	Tube 1½" x 9½" Lg	1
9	223420-5	Tube 1½" x 12¾" Lg	1
10	223504	Elbow 90° (1½" Tube x 1½" Tube)	1
11	2233420-6	Tube 1½" x 15¾" Lg	1
12	223502	Elbow 45° (1½" Tube x 1½" Tube)	1
13	223420-7	Tube 1½" x 17" Lg	1
14	223504	Elbow 90° (1½" Tube x 1½" Tube)	1
15	223420-1	Tube 1½" x 3½" Lg	1
16	223503	Elbow 90° (1½" Tube x 1½" Tube)	1
17	223506	Union (1½" Tube x 1½" Male Pipe)	1



FLUSH TRAY PIPING UNIT (R-L)

ILLUS.	PART NO.	NAME OF PART ³¹	AMT.
1	FP-39-66	Nipple 1/2 x 3 1/2 Lg. (T.B.E.)	1
2	FP-14-31	Elbow 1 1/2 x 90°	1
3	FP-39-58	Nipple 1 1/2 x 1 3/4 Lg. (T.B.E.)	1
4	223220-1	Valve 1 1/2" Ball	1
5	223506	Union (1 1/2" Tube x 1 1/2" Male Pipe)	1
6	223420-3	Tube 1 1/2" x 7 1/2" Lg	1
7	223504	Elbow 90° (1 1/2" Tube x 1 1/2" Tube)	1
8	223420-4	Tube 1 1/2" x 9 1/2" Lg	1
9	223420-5	Tube 1 1/2" x 12 3/4" Lg	1
10	223504	Elbow 90° (1 1/2" Tube x 1 1/2" Tube)	1
11	223420-6	Tube 1 1/2" x 15 3/4" Lg	1
12	223502	Elbow 45° (1 1/2" Tube x 1 1/2" Tube)	1
13	223420-9	Tube 1 1/2" x 20 1/4" Lg	1
14	223506	Union (1 1/2" Tube x 1 1/2" Male Pipe)	1