



CATALOG OF REPLACEMENT PARTS

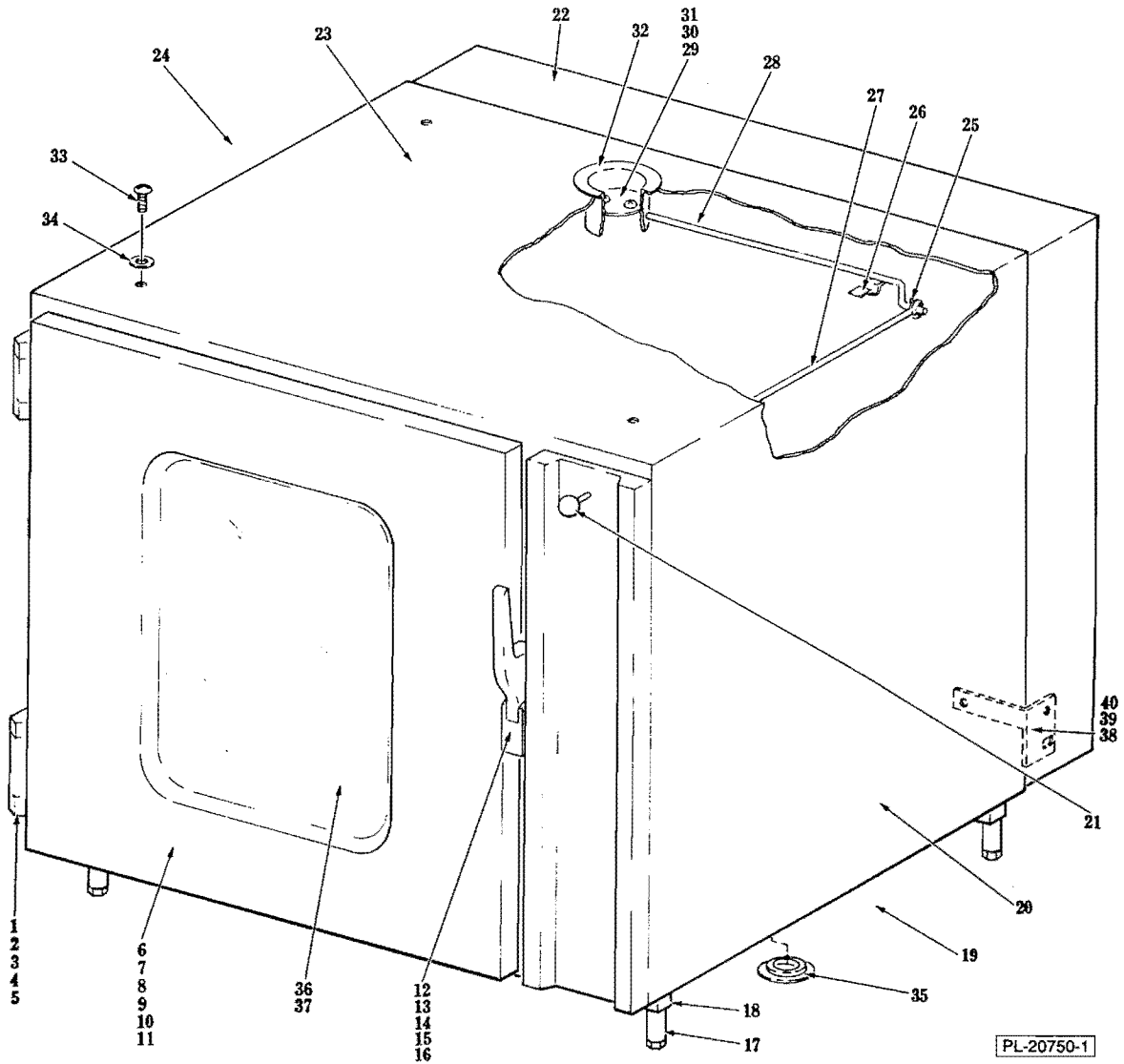
ELECTRIC CONVECTION OVEN WITH TIMED STEAM INJECTION

CVX21E ML-46171

THIS MANUAL REPLACES AND SHOULD BE USED
INSTEAD OF FORM 16293.

PRIOR ML'S COVERED IN THIS MANUAL

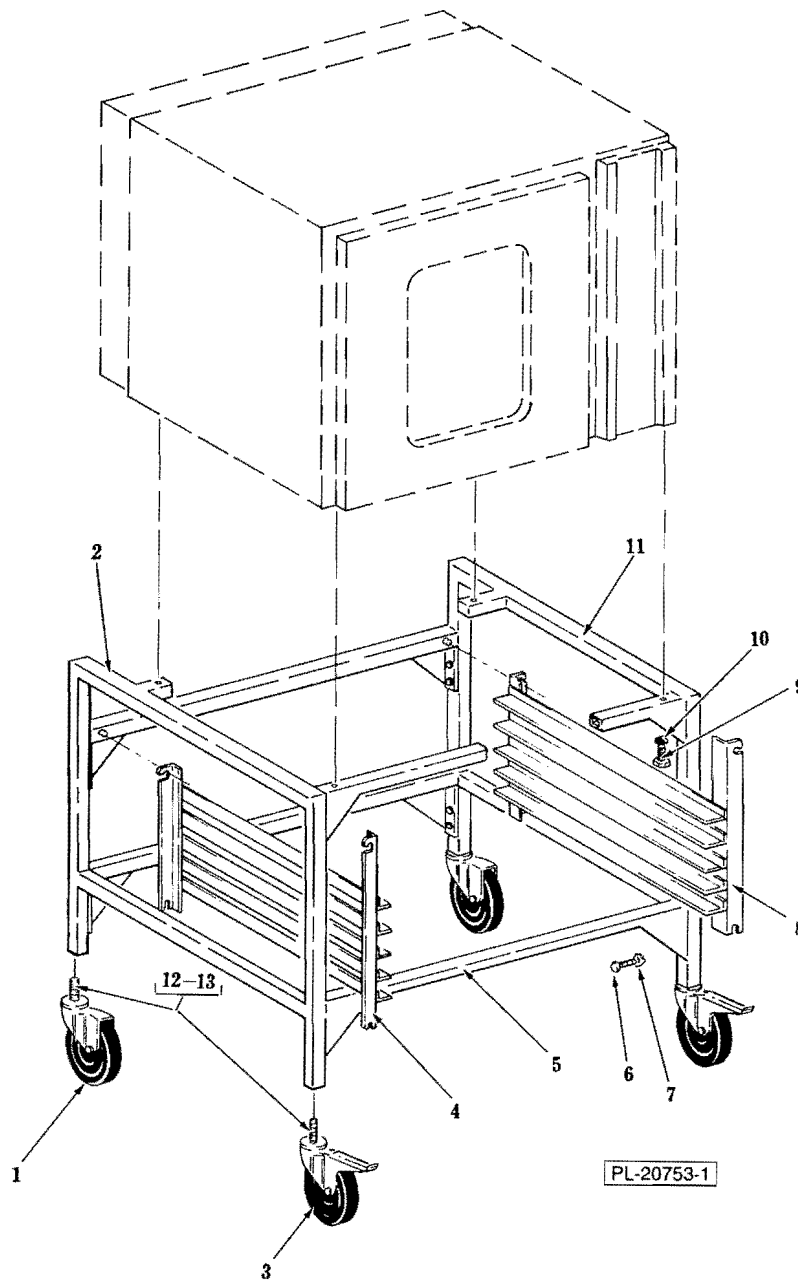
ML-46141



DOOR AND EXTERNAL PANELS

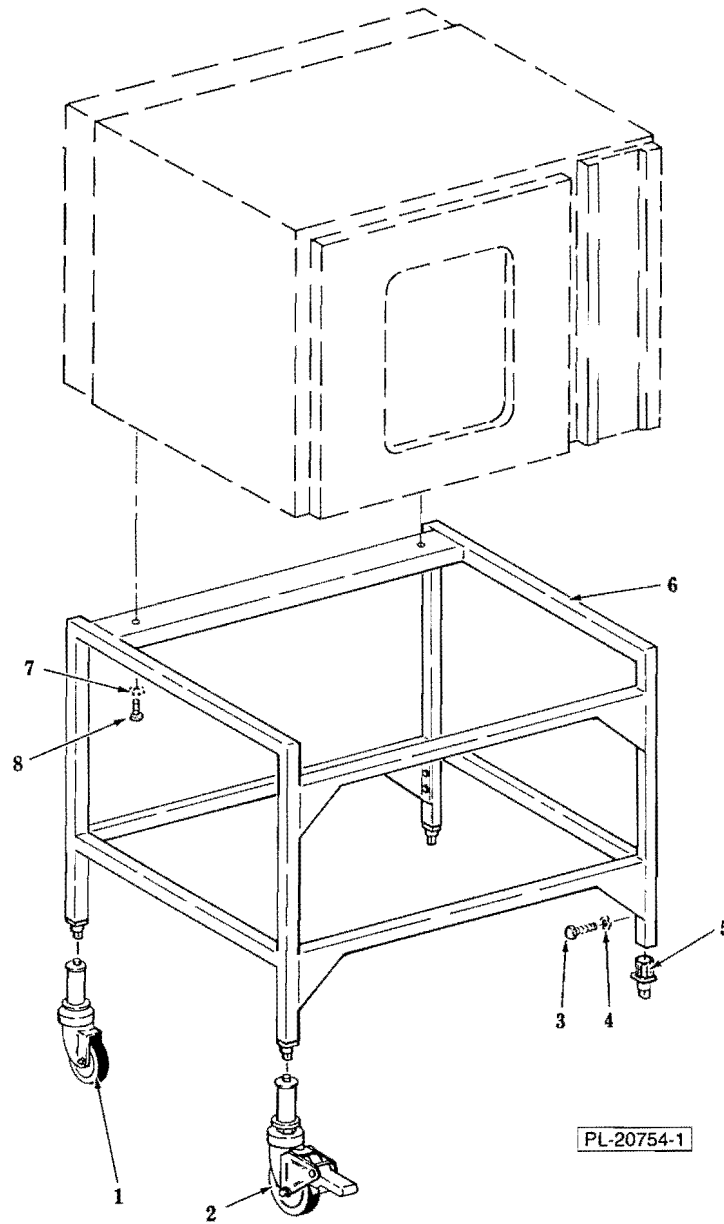
DOOR AND EXTERNAL PANELS

ILLUS. PL-20750-1	PART NO.	NAME OF PART ¹⁶	AMT.
1	149921	Hinge - Door	2
2	149940-31	Shim (4 Hole)	AR
3	SC-118-36	Mach. Screw - M5 × 0.8 × 16MM Flat Hd	6
4	SC-118-35	Mach. Screw M5 × 0.8 × 25MM Flat Hd	8
5	149926-2	Fastener Assy. (M5 Square Nut)	8
6	149950-28	Oven Door Assy. (Incls. items 7 thru 11, 36 & 37)	1
7	149944-3	Seal - Silicone (Door)	1
8	SC-118-39	Mach. Screw M4 × 0.7 × 30MM Flat Hd	2
9	149996-1	Washer (Retainer Seal to Door)	2
10	149950-30	Panel - Interior Door	1
11	149950-29	Panel - Exterior Door	1
12	149920	Handle & Latch Assy. (Incls. item 13 & Latch)	1
13	149920-1	Handle - Door	1
14	SC-118-34	Mach. Screw M5 × 0.8 × 40MM Flat Hd	2
15	149940-64	Spacer - Thread	1
16	149926-2	Fastener Assy. (M5 Square Nut)	2
17	149919-2	Foot - Adjustable	4
18	149940-7	Leg Assy	4
19	149950-1	Panel - Bottom	1
20	149950-6	Panel - R.H. Side	1
21	149951	Knob - Vent	1
22	149950-12	Panel - Rear	1
23	149950-34	Panel - Top	1
24	149950-5	Panel - L.H. Side	1
25	PC-3-23	Cotter Pin 1/16 × 1/2	2
26	149950-17	Support - Chimney Linkage	2
27	149950-18	Linkage - Chimney (Pull)	1
28	149950-16	Linkage - Chimney (Pivot)	1
29	149950-15	Damper	1
30	SC-200-2	Mach. Screw M4 × 0.7 × 10MM Pan Hd	2
31	WL-14-5	Lock Washer 8 External Shakeproof	2
32	149950-14	Chimney Assy	1
33	SC-119-3	Mach Screw M8 × 1.25 × 16MM Mushroom Hd	4
34	WS-26-6	Washer	4
35	149990-35	Plug - Hole	6
36	149913-1	Glass - Oven Window	1
37	149915-3	Seal - Silicone (Door Glass)	2
38	149950-10	Bracket - R.H	1
39	149950-11	Bracket - L.H	1
40	149926-1	Fastener Assy. (M4)	2



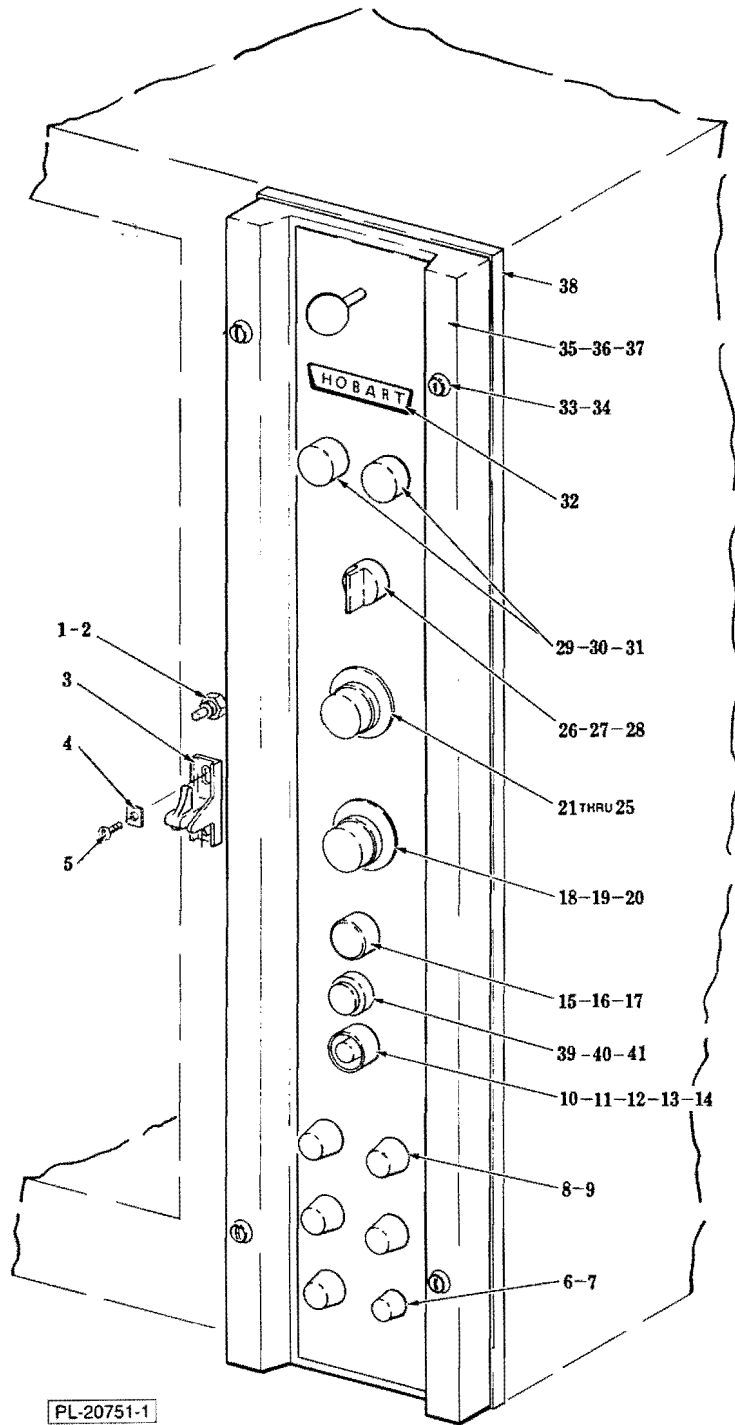
STAND WITH TENTE CASTERS AND PAN RACKS

ILLUS. PL-20753-1	PART NO.	NAME OF PART ²⁶	AMT.
1	149982	Caster - Swivel	2
2	150217-2	Leg (L.H.)	1
3	149981	Caster - Swivel with Double Brake	2
4	150217-5	Rack - Pan (L.H.)	1
5	150217-3	Support - Bar Frame	4
6	SC-118-45	Cap Screw M8 x 1.25 x 20MM Hex Hd	16
7	WL-19-56	Lock Washer DE8 Ext. Shakeproof	16
8	150217-6	Rack - Pan (R.H.)	1
9	SC-118-48	Cap Screw M8 x 1.25 x 50MM Hex Hd	4
10	WL-19-56	Lock Washer DE8 Ext. Shakeproof	4
11	150217-1	Leg (R.H.)	1
12	SC-118-56	Cap Screw M12 x 1.75 x 30MM Hex Hd	4
13	WL-7-30	Lock Washer 1/2" Ext. Shakeproof	4



STAND WITH ADJUSTABLE FEET AND OPTIONAL COLSON CASTERS

ILLUS. PL-20754-1	PART NO.	NAME OF PART ²⁸	AMT.
1	270793-2	Caster - Swivel	2
2	270793-1	Caster - Swivel with Double Brake	2
3	SC-118-45	Machine Screw M8 x 1.25 x 20mm	16
4	WL-19-56	Lock Washer DE8 Ext. Shakeproof	16
5	149919-2	Foot - Adjustable	4
6	149950-37	Frame - Oven Support Assy	1
7	WL-19-56	Lock Washer DE8 Ext. Shakeproof	2
8	SC-118-45	Cap Screw M8 x 1.25 x 20MM Hex Hd	2



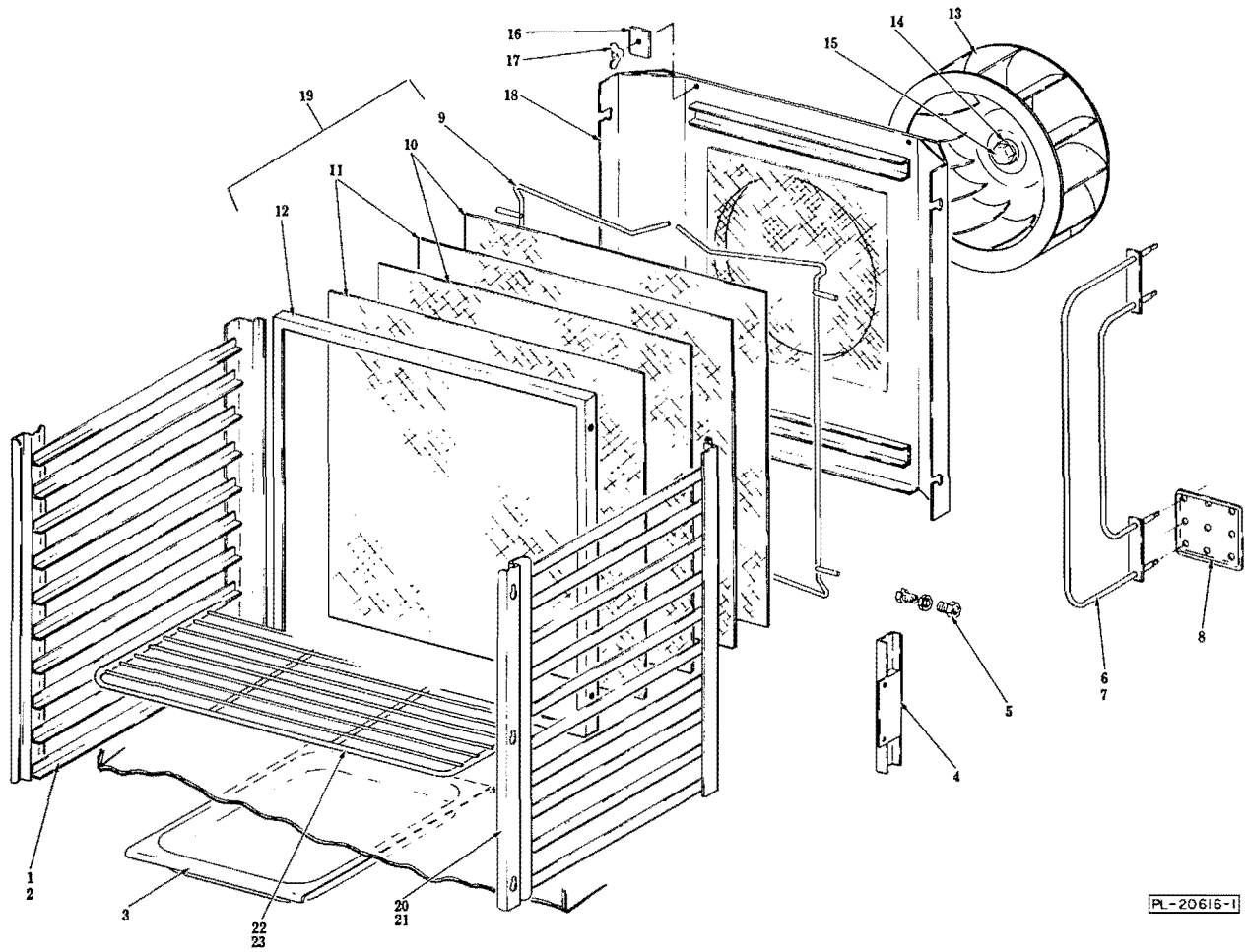
CONTROL PANEL

CONTROL PANEL

ILLUS. PL-20751-1	PART NO.	NAME OF PART ¹⁶	AMT.
1	149997	Switch - Door Interlock	1
2	149940-50	Bushing	1
3	149920-2	Latch - Door Handle	1
4	149940-47	Cover - Door Latch	1
5	SC-118-32	Mach. Screw M5 x 0.8 x 10MM Pan Hd	2
6	FE-21-19	Fuse 3.2A	1
7	FE-22-73	Holder - Fuse	1
8	FE-22-45	Fuse - 5A	5
9	FE-23-55	Holder - Fuse	5
10	149948	Button - Motor Reset	1
11	40651-7	Contactor	1
12	SC-118-28	Mach. Screw M4 x 0.7 x 12MM Pan Hd	2
13	40652-17	Relay - Motor Overload	1
14	87714-27-1	Buzzer	1
15	149952	Button - Push	1
16	147525-1	Block & Base - Switch Contact (Incls. item 17)	1
17	146916-1	Block - Switch Contact	1
18	149946	Knob - Timer	1
19	149998-1	Timer	1
20	SC-118-24	Mach. Screw M3 x 0.5 x 10MM Flat Hd	2
21	149946	Knob - Thermostat	1
*22	— — —	Thermostat (EGO)	1
**23	347961-1	Thermostat (Robert Shaw)	1
24	149999-5	Sleeving (3/8 x 69 1/16) (Protects Capillary Tube)	1
25	SC-114-83	Mach. Screw 6-32 x 1/4 Pan Hd	2
26	228500-2	Operator - Switch	1
27	147525-1	Block & Base - Switch Contact (Incls. 1 of item 28)	2
28	146916-1	Block - Switch Contact	3
29	228501-4	Bulb - 24 V. Pilot Light	2
30	149922-1	Lens Cover Assy	2
31	149914	Base - Pilot Light (W/O Bulb)	2
32	149990-58	Control Panel Overlay	1
33	SC-118-38	Mach. Screw M4 x 0.7 x 50 MM Flat Hd	4
34	WC-6-9	Washer - Countersunk	4
35	149990-59	Control Panel Assy	1
36	149940-52	Cable - Control Panel Restraint	1
37	150200-1	Sleeving (1/2 x 12) (Used on Panel Restraint)	1
38	149915-1	Seal - Control Panel	1
39	293126-1	Potentiometer	1
40	293127	Knob - Control Panel	1
41	149950-57	Bracket - Relay Support	1
	293123	Kit - Thermostat (Converts EGO to Robert Shaw)	1

*Not Available, Order Service Kit 293123.

**First Serial No. 81-001-227 and beyond use "Robert Shaw" thermostat.

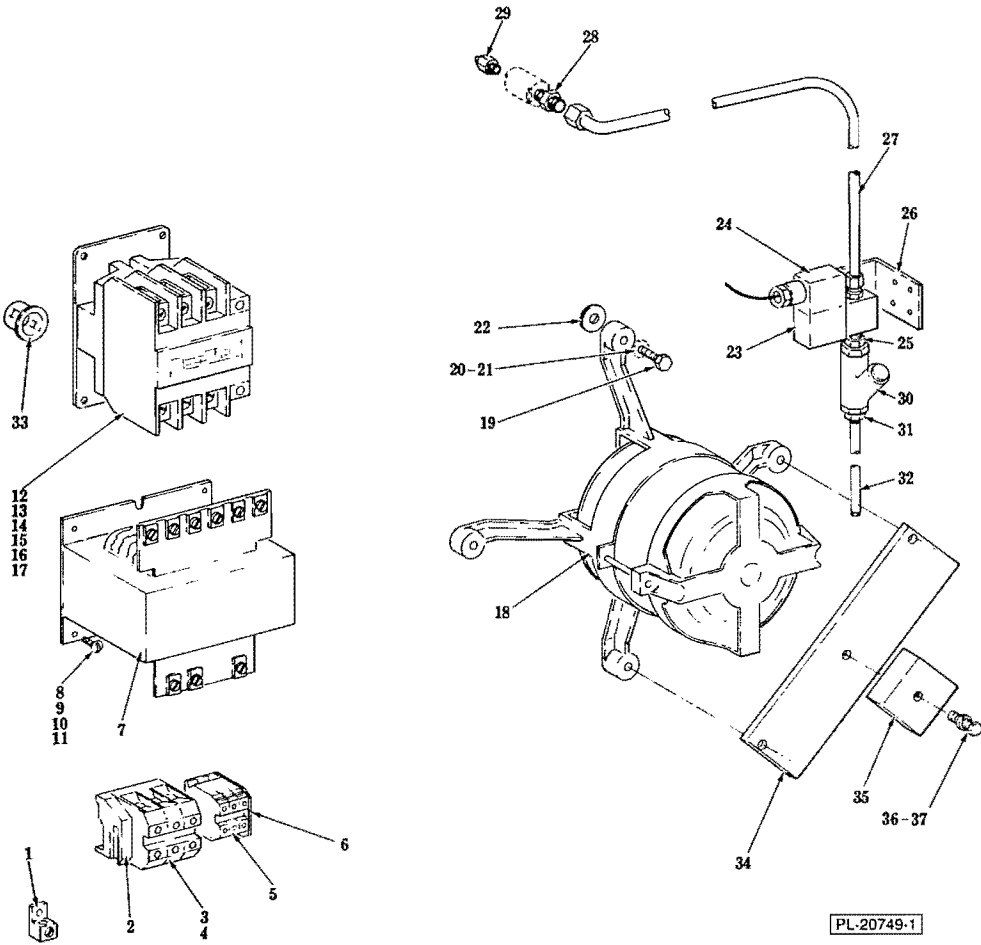


PL-20616-1

HEATERS AND BLOWER

HEATERS AND BLOWER

ILLUS. PL-20616-1	PART NO.	NAME OF PART ¹⁶	AMT.
1	149950-38	Rack - Oven (L.H.) (10 Shelves)	1
2	149950-55	Rack - Oven (L.H.) (7 Shelves)	1
3	149950-35	Pan - Drip	1
4	149940-88	Support - Capillary Bulb	1
5	149933	Fitting - Bulkhead (Capillary Tube)	2
6	150202-1	Heater - Electric (2.6 KW, 208 V.)	6
7	150202-2	Heater - Electric (2.6 KW, 240 V.)	6
8	149940-29	Hood - Heating Element	4
9	149950-25	Clip - Filter	2
10	149950-27	Filter - Metal (10MM x 10MM x 06MM Thk.)	2
11	149950-26	Filter - Metal (16MM x 10MM x 10MM Thk.)	2
12	149950-24	Filter Frame Assy	1
13	149940-35	Blower Wheel	1
14	149940-24	Washer - Special (Fan)	1
15	SC-118-43	Cap Screw M6 x 1.0 x 20MM Hex Hd	1
16	149940-34	Plate - Washer	2
17	NS-47-46	Wing Nut - M5	2
18	149950-22	Exhaust Assy	1
19	149950-23	Filter Assy. (Incls. items 9 thru 12)	1
20	149950-36	Rack - Oven (R.H.) (10 Shelves)	1
21	149950-54	Rack - Oven (R.H.) (7 Shelves)	1
22	293114	Grill (Chromed) (Carton of 5)	1
23	270731	Grill (SST) (Carton of 5)	1



MISCELLANEOUS

MISCELLANEOUS

ILLUS. PL-20749-1	PART NO.	NAME OF PART ¹⁶	AMT.
1	118544-3	Lug - Grounding	1
2	149912	End - Terminal Block	2
3	149905	Block - Terminal	3
4	149911-1	End - Terminal Block	1
5	150221	Block - Terminal	3
6	149911-3	End - Terminal Block	1
7	294500-12	Transformer	1
8	SC-200-2	Mach. Screw M4 x 0.7 x 10MM Pan Hd	4
9	WS-23-44	Washer	4
10	WL-14-5	Lock Washer 8 Ext. Shakeproof	4
11	NS-200-3	Mach. Nut M4 x 0.7 Hex	4
12	147621-12	Contact (80 Amp.) (Heaters)	1
13	227014-5	Contact (32 Amp.) (Motor)	1
14	SC-118-32	Mach. Screw M5 x 0.8 x 10MM Pan Hd	3
15	WS-23-34	Washer	3
16	WL-19-52	Lock Washer DE5 Ext. Shakeproof	3
17	NS-47-33	Mach. Nut M5 x 0.8 Hex Thin	3
18	149931-1	Motor - Fan (208/240)	1
19	SC-118-44	Cap Screw M6 x 1.0 x 40MM Hex Hd	4
20	WS-30-19	Washer	4
21	WL-19-57	Lock Washer DE6 Ext. Shakeproof	4
22	149940-24	Washer - Motor Support	4
23	293052-1	Valve - Solenoid (24 V.) (Incls. item 24)	1
24	293105-1	Coil - Solenoid Valve (24 V.)	1
25	149973-1	Reducer - 3/8 to 1/8 N.P.T	1
26	149940-17	Support - Water Solenoid	1
27	149950-21	Tube - Injector	1
28	149963-1	Union - Injector Tube	2
29	149950-66	Injector	1
30	149968	Line Strainer	1
31	FP-27-42	Bushing - 3/8 to 1/4 Hex Reducing	1
32	FP-81-48	Nipple 1/4 x 6 (T.B.E.)	1
33	FE-23-56	Bushing - Heyco #2123	2
34	149950-60	Bracket - Relay Timer	1
35	87714-25-1	Relay - Time Delay	1
36	WL-19-57	Lock Washer DE6 Ext. Shakeproof	1
37	SC-119-10	Cap Screw M6 x 1.0 x 30MM Hex Hd	1
	539847	Tie - Cable (Hi-Temperature)	AR
	149940-63	Label - Motor Rotation	1
	149926-1	Fastener Assy. (M4 Square Nut & Retainer)	AR
	149926-2	Fastener Assy. (M5 Square Nut & Retainer)	AR
	149926-3	Fastener Assy. (M6 Square Nut & Retainer)	AR