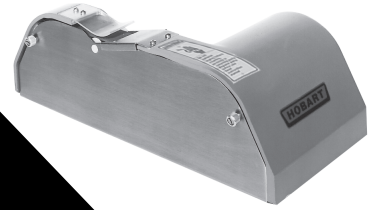


INSTRUCTIONS



MODEL BE1

KNIFE SHARPENER

MODEL BE1

ML - 104443



EXECUTIVE OFFICES
701 RIDGE AVENUE
TROY, OHIO 45374-0001

Installation, Operation, and Care of MODEL BE1 KNIFE SHARPENER

SAVE THESE INSTRUCTIONS

GENERAL

The BE1 Knife Sharpener allows you to put a *BETTER EDGE* on flat-bladed knives by applying the blade edge against a grit-bearing belt moving at the optimum speed. Excessive pressure during sharpening could overheat the blade resulting in loss of temper and reduction of cutlery life. The unloader wheels prevent over-pressure (and over-heating) by lifting the blade off the belt if too much pressure is applied.

INSTALLATION

UNPACKING

Immediately after unpacking the Knife Sharpener, check for possible shipping damage. If the BE1 is found to be damaged after unpacking, save the packaging material and contact the carrier within 15 days of delivery.

Prior to installation, test the electrical service to assure that it agrees with the specifications on the data plate located on the right side of the housing.

LOCATION

The Model BE1 Knife Sharpener should be placed on a suitable counter, table, or workbench where the *suction-cup* feet will hold the sharpener in place.

ELECTRICAL CONNECTION

WARNING: THE ELECTRICAL CORD IS PROVIDED WITH A THREE-PRONG GROUNDING PLUG. THE OUTLET TO WHICH THIS PLUG IS CONNECTED MUST BE PROPERLY GROUNDED. IF THE RECEPTACLE IS NOT THE PROPER GROUNDING TYPE, CONTACT AN ELECTRICIAN .

ELECTRICAL DATA

Model	Volts / Hz / Phase	Amps
BE1	120 / 60 / 1	0.4

OPERATION

WARNING: DO NOT IMMERSE. UNPLUG BEFORE CLEANING, SERVICING OR REMOVING PARTS. REPLACE PARTS BEFORE USE.

CONTROLS (Fig. 1)

On – Off Switch — Turns the sharpener On and Off.

Circuit Breaker — Breaks the circuit if the current exceeds 1 Ampere. Turn off sharpener. Then press Circuit Breaker button to restore circuit.

Adjustment Knob — Centers belt track when sharpener is on.

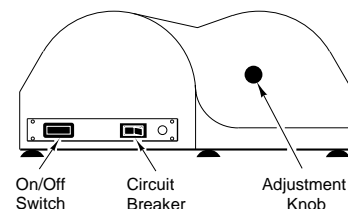


Fig. 1

SHARPENING KNIVES

Clean and dry knife before sharpening. Turn sharpener on.

Insert the knife in the sharpening area with the handle next to the housing. The knife should be flat against the guide plate (Fig. 2). Slide the knife down the guide plate until it contacts the unloader wheels. Move the knife smoothly and continuously to the right or left at a rate of one inch per second. Turn the knife over and repeat the procedure on the other side, moving the knife in the opposite direction.

The first time a knife is sharpened on the BE1, you may need to repeat this procedure four or five times for each side of the knife. Once sharpened, only one pass-per-side should be required.

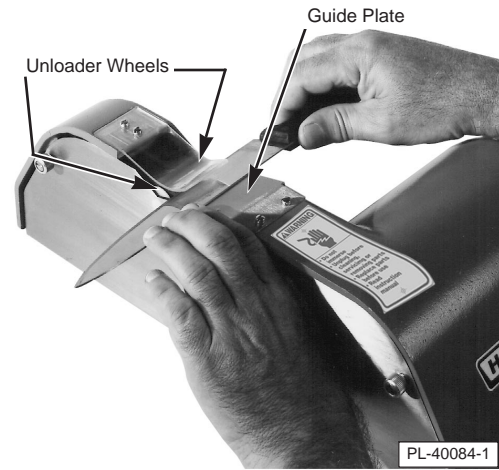


Fig. 2

MAINTENANCE

WARNING: TURN THE MACHINE OFF AND UNPLUG THE ELECTRICAL CORD BEFORE DOING ANY MAINTENANCE.

HOW TO REPLACE THE SHARPENING BELT (Fig. 3)

Refer to Replacement Parts, page 4.

Loosen the two knurled screws and remove the side panel.

Press down on bottom spring tensioner to loosen the Belt; remove Belt from drive wheels.

With the Sharpening Belt removed, the unloader wheels can be replaced if worn or cut. To remove either unloader wheel, squeeze the shaft on the nylon pin and remove both the wheel and pin. Assemble new parts as follows:

1) Insert a new nylon pin through the hole in the housing or side panel. 2) Assemble a new unloader wheel onto the shaft of the nylon pin so the wheel is snug to the side panel or housing.

Install new Belt around two drive wheels. Press down on the bottom spring tensioner to position the Belt on the drive wheels. Replace the side panel with its two knurled screws.

NOTE: When installing a new belt, turn the adjustment knob on the right side until the belt is centered. Assure that the belt is tracking in the center, not rubbing the housing.

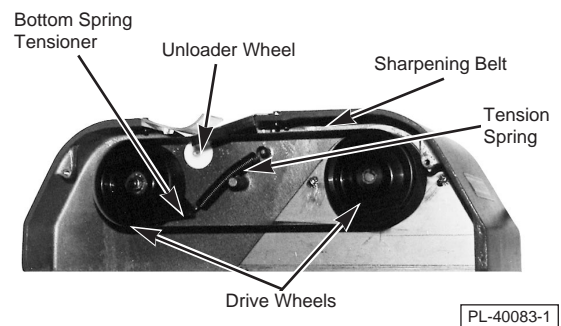


Fig. 3

TROUBLESHOOTING

PROBLEM

Won't run.

SUGGESTED ACTION

Check electric power supply.

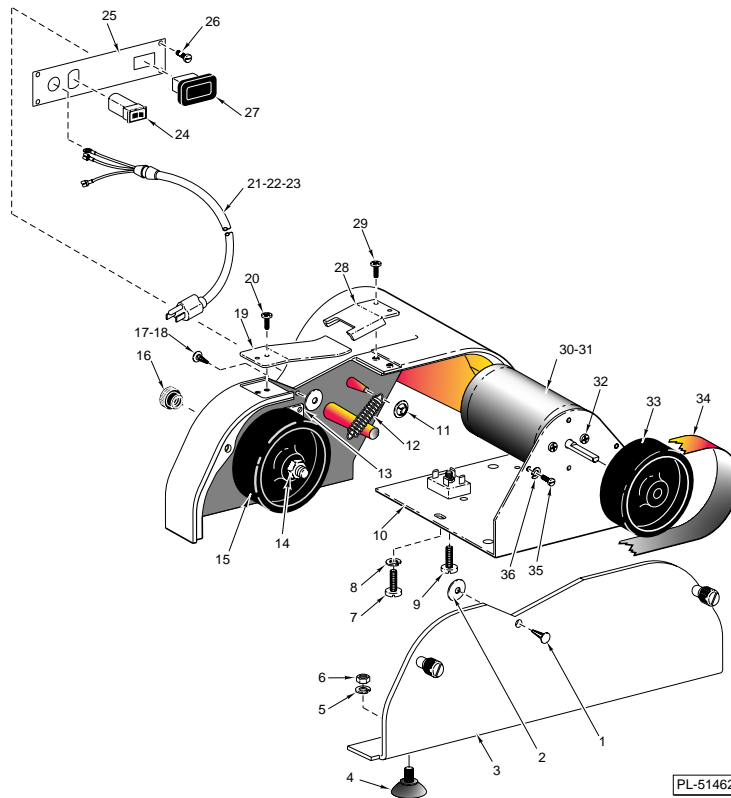
Check On - Off switch.

If tripped, press Circuit Breaker button.

SERVICE

For service problems related to this equipment, contact your local Hobart-authorized service office.

KNIFE SHARPENER UNIT



ILLUS. PL-51462	PART NO.	NAME OF PART	AMT.
1	438336	Fastener - Drive	1
2	438328	Unloader Wheel	1
3	438475	Plate - Cover Assy.	1
4	438339	Foot - Suction	5
5	WL-14-5	Lockwasher 8 External Shakeproof	5
6	NS-11-12	Mach. Nut 8-32 Hex	5
7	SC-120-35	Mach. Screw 8-32 x 3/8 Phil. Pan Hd.	2
8	WL-14-5	Lockwasher 8 External Shakeproof	2
9	SC-7-38	Mach. Screw 8-32 x 1/4 Rd. Hd.	1
10	438476	Plate - Motor Mounting	1
11	438808	Pushnut (Flat Round Type)	1
12	438332	Spring - Tension	1
13	438329	Tension Plate	1
14	438345	Nut - Nylon Hex Lock	1
15	438326	Wheel & Bearing Assy.	1
16	438334	Knob - Tension Assy.	1
17	438336-2	Fastener - Drive	1
18	438328	Unloader Wheel	1
19	438333	Cover - Belt	1
20	SC-120-35	Mach. Screw 8-32 x 3/8 Phil. Pan Hd.	2
21	123856-1	Cord & Plug Assy.(Under 150 V.)	1
22	123856-2	Cord & Plug Assy. (200 - 250 V.)	1
23	RR-8-13	Retaining Ring (Use with Items 21 & 23)	1
24	88196-13-1	Overload - Switch	1
25	438706	Plate - Switch	1
26	121676-4	Screw - Drive	4
27	87711-246-1	Switch - On/Off	1
28	438483	Insert - Knife Sharp	1
29	SC-120-35	Mach. Screw 8-32 x 3/8 Phil. Pan Hd.	2
30	438348-1	Motor - D.C. (115 V., 60 Hz., 1 Ph.)	1
31	438348-2	Motor - D.C. (230 V., 50 Hz., 1 Ph.)	1
32	SC-122-69	Mach. Screw 10-32 x 3/8 Phil. Truss Hd.	2
33	438325	Wheel - Drive	1
34	438504	Belts (Box of 6)(Incls. 1 each of Items 1 & 17 and 6 each of Items 2 & 18)	1
35	SC-120-35	Mach. Screw 8-32 x 3/8 Phil. Pan Hd.	2
36	WL-14-5	Lockwasher 8 External Shakeproof	2
	438349	Rectifier - Bridge (Full Wave)	1