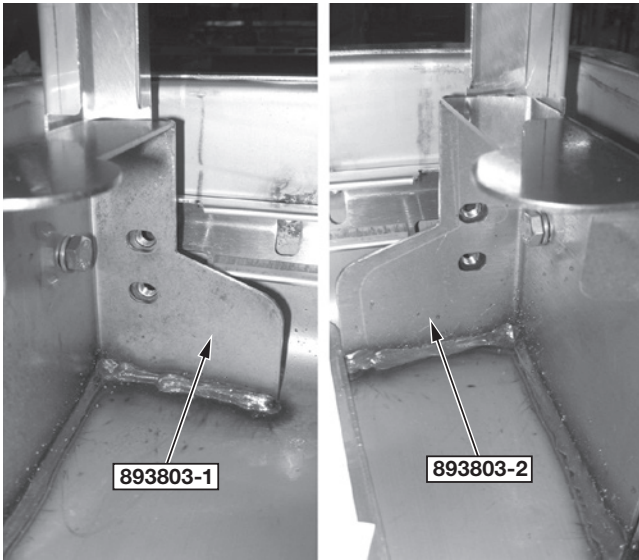
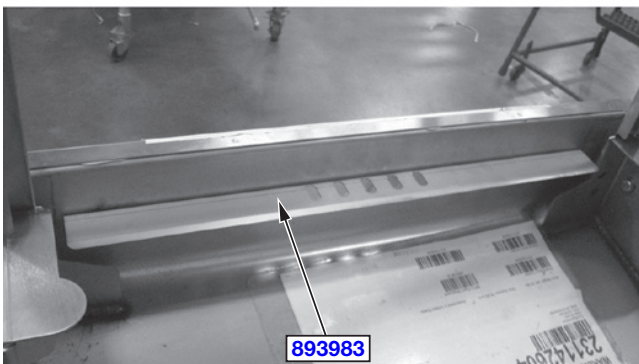
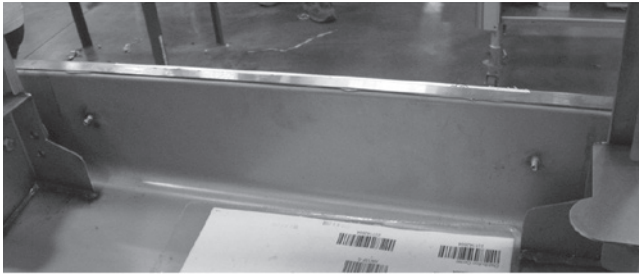


# INSTALLATION INSTRUCTIONS

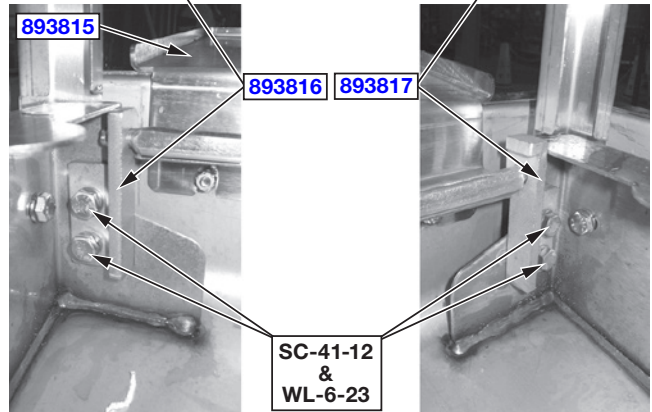
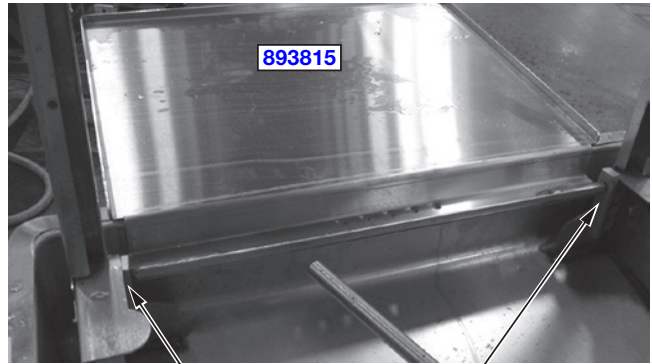
AM15F KIT **893118**  
AM15F STD KIT **950413**



1. Remove 2 screws (SC-41-09) from each chamber mounting bracket (893803-1) RH and (893803-2) LH.



2. Remove baffle (893069).
3. Install baffle (893983).



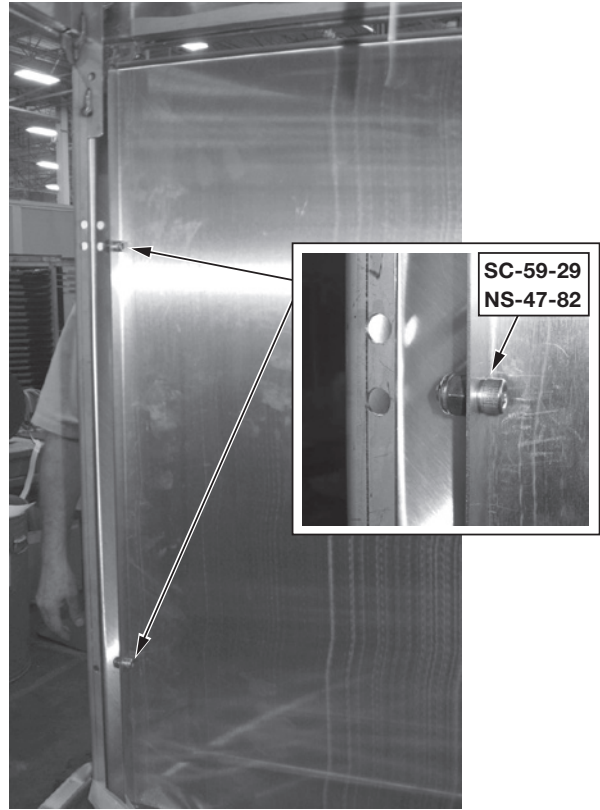
4. Attach 2 hinges: (893816) LH and (893817) RH to tray (893815) and assemble to chamber with 2 screws (SC-41-12), 2 washers (WL-6-23) on each side.



5. Loosen 3 nuts (NS-47-82) on lift side of door guide cover.



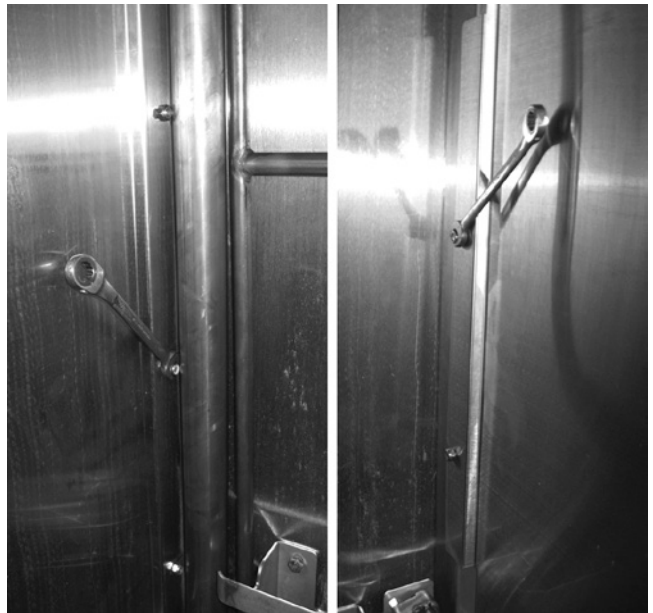
6. Loosen 2 nuts (NS-47-82) on right side of door guide cover.



8. Secure panels to the front posts with 2 screws (SC-59-29) and 2 nuts (NS-47-82) for each panel.



7. Attach 3 slots panel (936235) (950415) to the left side and 2 slots panel (936234) (950414) to the right side of machine.



9. Tighten 5 nuts (NS-47-82).