

AM15 LP FIELD CONVERSION INSTRUCTIONS

⚠ WARNING This conversion kit shall be installed by a qualified servicer in accordance with the manufacturer's instructions and all applicable codes and requirements of the authority having jurisdiction. If the information in these instructions is not followed exactly, a fire, explosion or production of carbon monoxide may result causing property damage, personal injury or loss of life. The qualified servicer is responsible for the proper installation of this kit. The installation is not proper and complete until the operation of the converted appliance is checked as specified in the manufacturer's instructions supplied with the kit.

00-948534 KIT TO BE USED ON AM15, AM15T and AM15F MODELS

All machines receiving this kit will be set up from the factory to use Natural Gas (NG)

This kit allows the machine to be converted in the field to Liquefied Petroleum (LP, GPL, LPG)

00-948534 KIT:

00-948534 KIT CONTENTS:

- 1 0F-038429 Instructions
- 1 00-893149 Brass 7/16 x 20 orifice marked LP
- 1 00-473532 Data Plate & 2-rivets
- 1 Plastic wire tie
- 1 00-328738 KIT, CONVERSION-LP.
- 1 BASO Y71 KIT, Regulator conversion:
 - 1 Regulator spring
 - 1 Seal screw
 - 1 Caution Label



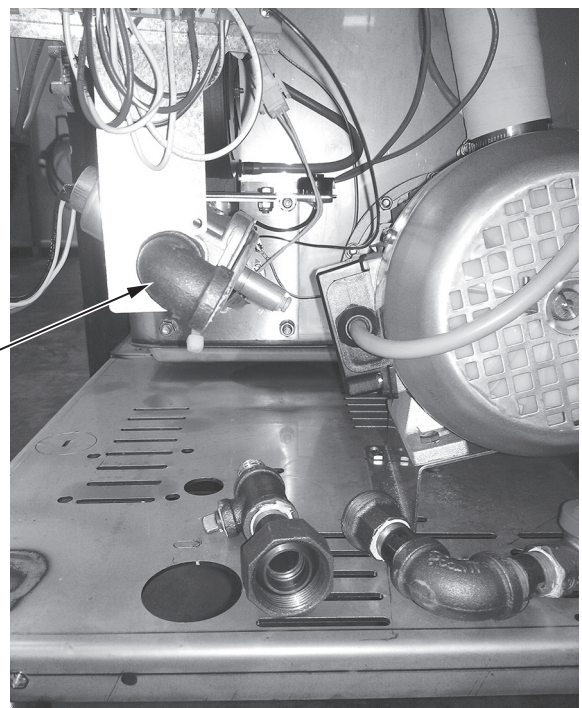
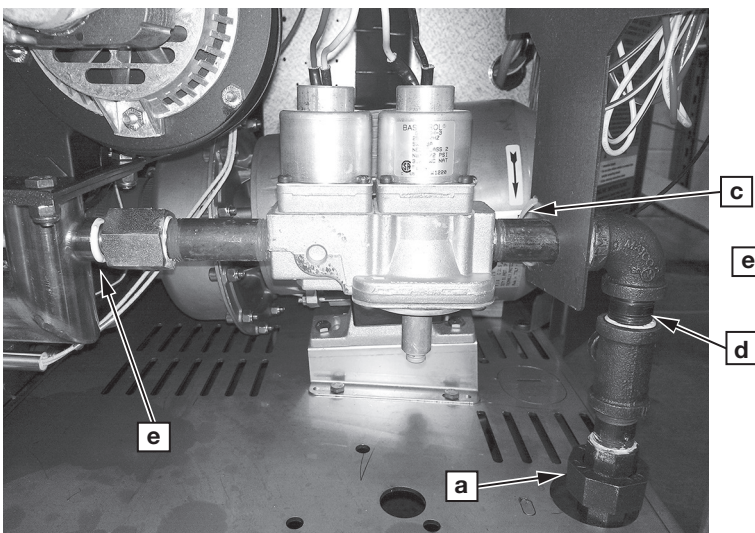
INSTRUCTIONS:

⚠ WARNING Disconnect the electrical power to the machine and follow lockout/tagout procedures.

1. Disconnect all power and gas lines from machine. Remove front & left side panels to expose gas components.

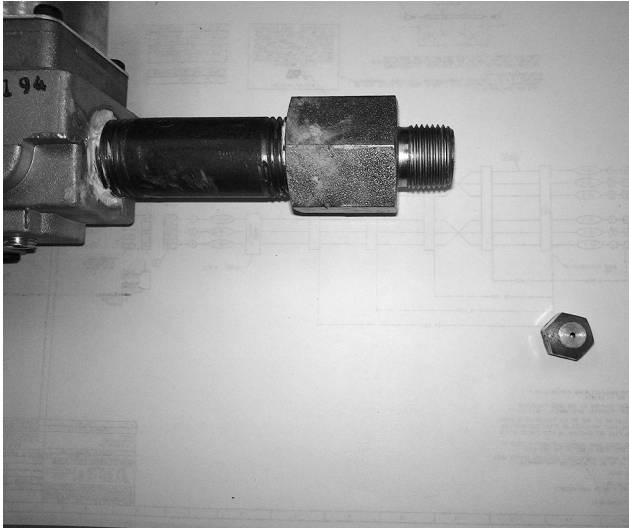


2. Remove 893896-1 pipe assembly from machine.
 - a) Loosen union and remove gas cock & associated plumbing
 - b) Disconnect electrical plugs on regulator and fan motor.
 - c) Cut cable tie securing plumbing to bracket
 - d) Remove pipe assembly below elbow
 - e) Unscrew remaining assembly at the burner by turning the elbow CCW.

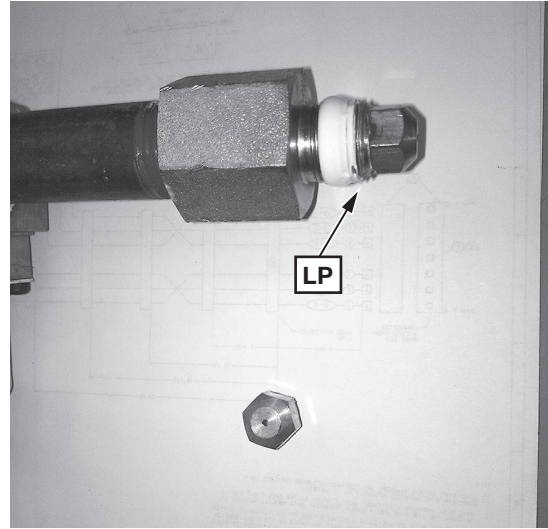


3. Unscrew and remove the 893149-1 NG orifice from the regulator assembly. Locate and install the 893149-2, LP orifice supplied in this kit. Be sure it has the LP stamped on the part. Add sufficient LP rated thread sealer to prevent leakage.

NOTICE Apply sealant sparingly to threads of adapter making certain that all sealant is clear of orifice opening.

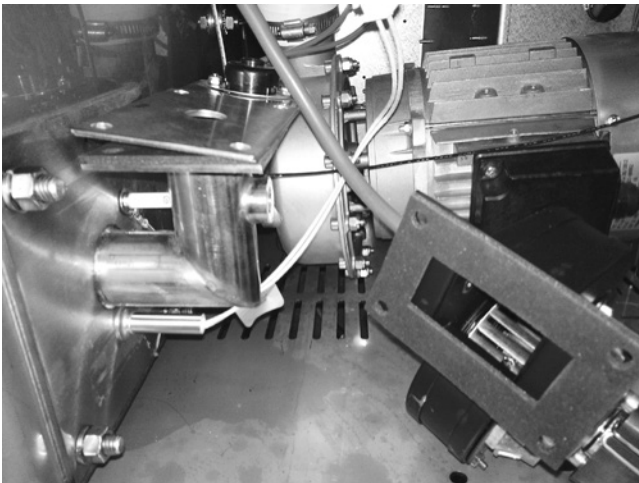


Remove NG nozzle

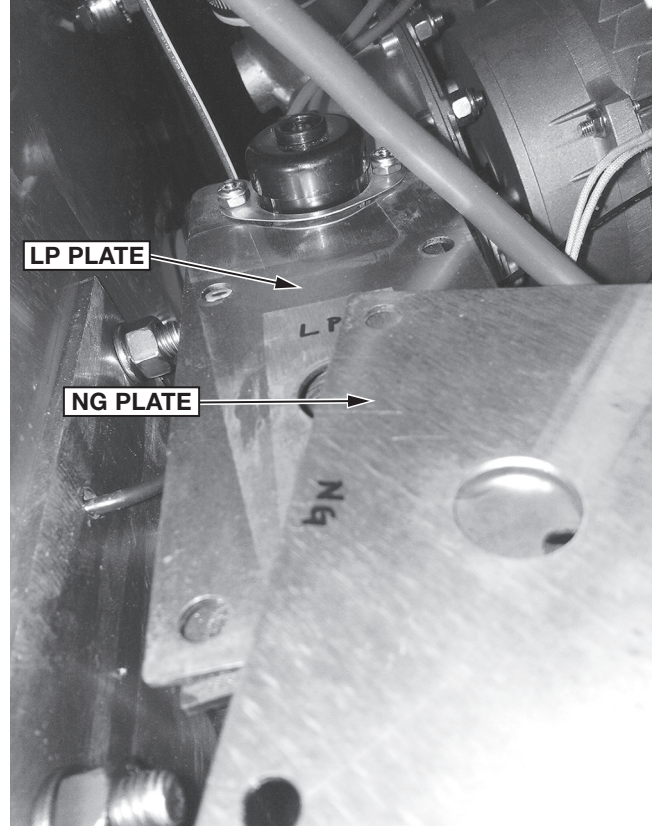


Install LP nozzle. Check nozzle for LP stamp

4. Remove the four bolts holding the fan. Do not remove the vacuum line. Lay the fan to the side. This will expose 2 Orifice plates, the smaller plate/opening for NG, the larger plate/opening for LP. Remove the NG orifice plate and discard.



Re-assemble fan onto burner assembly



5. Reassemble the Gas Pipe & Regulator assembly. It may be necessary to reapply thread sealer. Do not reconnect gas lines or electrical supply at this time.
6. Follow Y71 LP conversion kit 328738 instructions for the regulator conversion process. This kit, found separately packaged within [948534](#) kit, contains instructions, a regulator spring, a seal screw marked with LP and a caution label. This instruction details how to make regulator changes and test completed assembly. If this instruction / kit is missing or lost contact your HOBART service center before proceeding.
7. Replace wire tie supporting inlet piping.
8. Turn the power and gas on to the machine and start the machine. Burner should light after air is purged from the gas lines.
9. NOTE: After three failed attempts to light the burner, power must be cycled to reset the ignition module. Disconnect, then reconnect power.
10. With burner lit, perform CO measurement at exhaust flue. Measurement must be less than 200 PPM. ANY reading above 200 PPM is not acceptable and adjustments are necessary. Refer to HOBART Service Manual F25170.
11. With burner operating properly, reinstall panels and recheck CO at flue. NOTE: Make any additional blower adjustments if needed.
12. With the burner operating properly, remove gas data plate and replace with LP data plate from kit.
13. Please contact your Hobart Service office if you have any questions.