



# CATALOG OF REPLACEMENT PARTS



## DISHWASHER

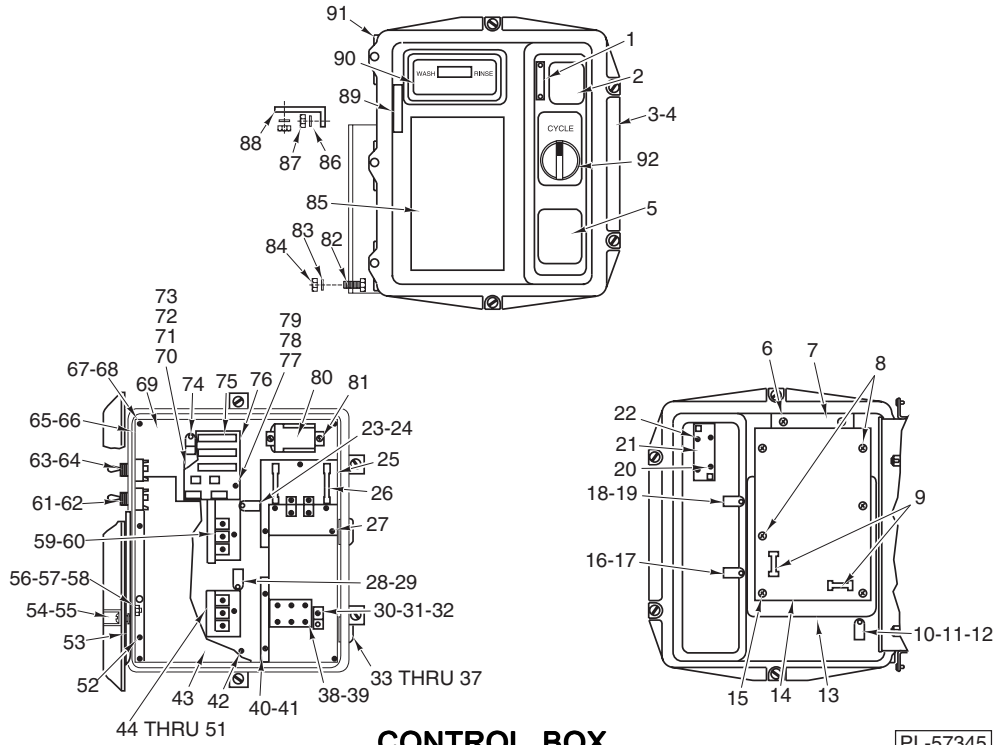
AM14T	ML-110412
AM14TC	ML-110414
AM14T	ML-110973
AM14TC	ML-110974

### Table of Contents

4	CONTROL BOX (PREVIOUS CONSTRUCTION)
7	CONTROL BOX (CURRENT CONSTRUCTION)
9	CONTROL BOX ELECTRICAL COMPONENTS (CURRENT CONSTRUCTION)
11	MOTOR AND PUMP
13	MOTOR (HOBART)
15	MOTOR (GE)
17	LOWER WASH ARM
19	UPPER WASH ARM
21	OUTSIDE RINSE PIPING* (ML-110412 & ML-110414)
23	BOOSTER AND PIPING (ML-110412 & ML-110414)
25	BOOSTER TANK (ML-110973 & ML-110974)
26	OUTSIDE RINSE PIPING W/BOOSTER (ML-110973 & ML-110974)
27	OUTSIDE RINSE PIPING W/O BOOSTER (ML-110973 & ML-110974)
29	DOOR (STRAIGHT-THRU)
31	DOOR (CORNER)
33	DOOR INTERLOCK
34	DOOR LIFT (STRAIGHT-THRU)
35	DOOR LIFT (CORNER)
36	INSIDE RINSE PIPING
37	STRAINER AND DRAIN
38	LOW WATER PROTECTION & HEAT BOX (STEAM & ELECTRIC HEAT)
39	LOW WATER PROTECTION & TRANSFORMER BOX (GAS HEAT)

- 40 GAS HEAT CONTROL BOX
- 41 ELECTRIC HEAT
- 42 GAS HEAT COMPONENTS  
(CURRENT CONSTRUCTION)
- 45 GAS HEAT IMMERSION TUBE  
SHROUD AND FLUE
- 46 GAS BURNER  
(PREVIOUS CONSTRUCTION)
- 49 FLUE AND IGNITER CONTROL (GAS HEAT)  
(PREVIOUS CONSTRUCTION)
- 51 STEAM INJECTOR  
(PREVIOUS CONSTRUCTION)
- 53 STEAM COIL PIPING  
(PREVIOUS CONSTRUCTION)
- 54 STEAM COILS  
(PREVIOUS CONSTRUCTION)
- 55 TRACK UNIT
- 57 VENT ASSEMBLY
- 59 MISCELLANEOUS
- 60 DISH RACKS

AM14T/AM14TC DISHWASHER REPLACEMENT PARTS



**CONTROL BOX  
(PREVIOUS CONSTRUCTION)**

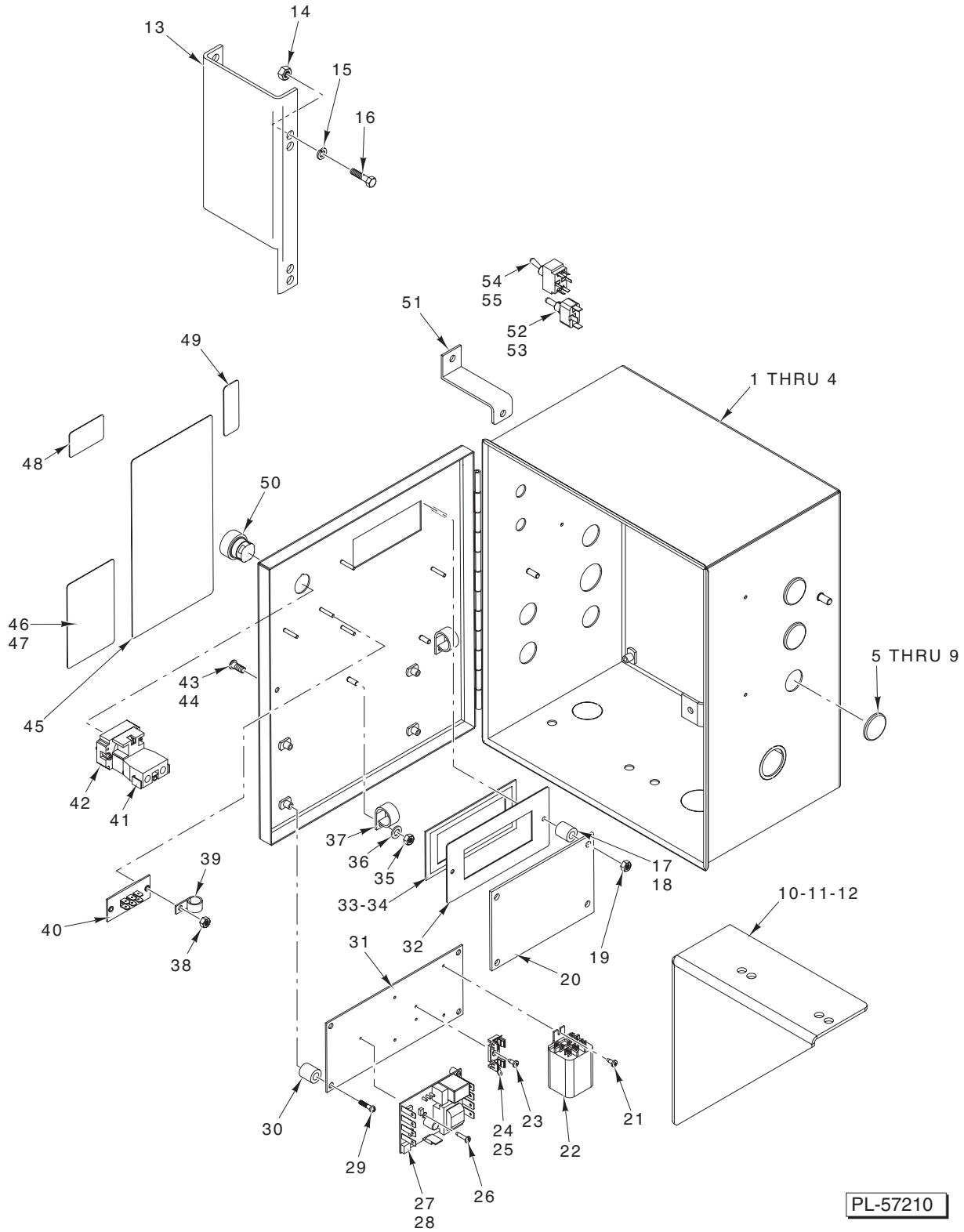
PL-57345

ILLUS.	PART NO.	NAME OF PART	AMT.
PL-57345			
1	00-289089	Label – Switch .....	1
2	00-120872-00003	Switch – Operator’s Select .....	1
3	00-112068	Gasket – Control Box Lid .....	1
4	00-475233	Lid & Gasket Assy. (Incls. Items 1, 3, 85, & 90) .....	1
5	00-438131-00042	Label – Caution/Warning .....	1
6	SD-012-30	Self-Tapping Screw 6-32 x 5/16 Phil. Pan Hd., Type T .....	4
7	00-289087	Retainer – Display .....	1
8	SD-012-04	Self-Tapping Screw 8-32 x 3/8 Phil. Truss Hd., Type T .....	4
9	FE-009-26	Fuse – Glass (250 V., 1.5 Amp.) (Type AGC) .....	2
10	00-078752-00010	Clamp – Retaining .....	1
11	WL-006-07	Lockwasher #10 Medium .....	1
12	SC-021-80	Mach. Screw 10-32 x 3/8 Rd. Hd. ....	1
13	00-289129	Shield – Static .....	1
*14	00-749825	Control Board & Computer Assy. ....	1
15	SC-021-80	Mach. Screw 10-32 x 3/8 Rd. Hd. ....	2
16	00-078752-00010	Clamp – Retaining .....	1
17	SD-012-04	Self-Tapping Screw 8-32 x 3/8 Phil. Truss Hd., Type T .....	1
18	00-078752-00004	Retainer (7/16 In.) .....	1
19	SD-012-04	Self-Tapping Screw 8-32 x 3/8 Phil. Truss Hd., Type T .....	1
20	SD-009-04	Self-Tapping Screw 6-32 x 3/4 Phil. Pan Hd., Type F .....	2
21	00-294854	Reed Mounting Board Assy. ....	1
22	SD-012-04	Self-Tapping Screw 8-32 x 3/8 Phil. Truss Hd., Type T .....	2
23	00-078752-00009	Clamp – Cable .....	1
24	SD-008-25	Self-Tapping Screw 10-16 x 1/2 Phil. Pan Hd., Type B .....	1
25	00-294488	Board – Detergent/Rinse Feeder .....	1
26	FE-021-11	Fuse (5 Amp.) .....	2
27	SD-008-18	Self-Tapping Screw 8-18 x 3/8 Phil. Bndg. Hd., Type B .....	3
28	00-078752-00010	Clamp – Retaining .....	1
29	SD-008-25	Self-Tapping Screw 10-16 x 1/2 Phil. Pan Hd., Type B .....	1
30	00-118544-00001	Lug – Solderless .....	1
31	SD-008-25	Self-Tapping Screw 10-16 x 1/2 Phil. Pan Hd., Type B .....	1
32	WL-007-12	Lockwasher #10 External Shakeproof .....	1
33	00-119244	Cap & Stud Assy. ....	2
34	00-119254	Retainer – Cap & Stud .....	2
35	00-067500-00031	O-Ring .....	2

## CONTROL BOX (PREVIOUS CONSTRUCTION)

ILLUS. PL-57345	PART NO.	NAME OF PART	AMT.
36	WL-006-17	Lockwasher 1/4 Medium .....	2
37	NS-015-01	Nut 1/4-20 Hex (SST) .....	2
38	00-294325-003-1	Block – Terminal .....	1
39	SD-029-11	Self-Tapping Screw 6-32 x 1 Phil. Pan Hd., Type F .....	2
40	00-294503	Barrier – Field Wiring .....	1
41	SD-008-25	Self-Tapping Screw 10-16 x 1/2 Phil. Pan Hd., Type B .....	2
42	SD-008-18	Self-Tapping Screw 8-18 x 3/8 Phil. Bndg. Hd., Type B (Cable Harness Grd.) .....	1
43	00-294502	Barrier – Contactor .....	1
44	00-087713-065-1	Contactor – Magnetic (3 Pole) (Gas or Electric Heat) .....	1
45	SD-008-25	Self-Tapping Screw 10-16 x 1/2 Phil. Pan Hd., Type B .....	2
46	00-294436-00002	Fuse Block (Gas Heat) .....	1
47	FE-015-01	Fuse (1.5 Amp., 100-120 V. & 200-240 V.) (Gas Heat) .....	1
48	FE-022-74	Fuse (0.6 Amp., 380-460 V.) (Gas Heat) .....	1
49	SD-019-31	Self-Tapping Screw 8-18 x 1/2 Phil. Pan Hd., Type B .....	2
50	00-087714-007-1	Relay – D.P.D.T. 24 VAC (Gas Heat) .....	2
51	SD-008-18	Self-Tapping Screw 8-18 x 3/8 Phil. Bndg. Hd., Type B .....	4
52	SD-008-25	Self-Tapping Screw 10-16 x 1/2 Phil. Pan Hd., Type B .....	2
53	00-112016	Retainer – Captive Screw .....	4
54	00-112129	Screw – Captive .....	4
55	00-112169	Spacer – Lid .....	4
56	00-078752-00001	Clamp – Retaining .....	1
57	WL-006-07	Lockwasher #10 Medium .....	1
58	NS-011-18	Mach. Nut 10-24 Hex (SST) .....	1
59	00-087713-065-1	Contactor – Magnetic (3-Pole) (Electric Heat) .....	1
60	SD-008-25	Self-Tapping Screw 10-16 x 1/2 Phil. Pan Hd., Type B .....	2
61	00-087711-147-1	Switch – Toggle .....	1
62	WL-008-32	Lockwasher 1/2 Internal Shakeproof .....	1
63	00-087711-180-1	Switch – Toggle (D.P.D.T.) (Keyway Must be Located on Top of Switch) .....	1
64	WL-008-32	Lockwasher 1/2 Internal Shakeproof .....	1
65	00-473438	Control Box (RH Controls) .....	1
66	00-473439	Control Box (LH Controls) (Electric & Steam Heat) .....	1
67	SC-071-11	Mach. Screw 10-24 x 3/8 Phil. Truss Hd. .....	4
68	WL-007-12	Lockwasher #10 External Shakeproof .....	4
69	00-288765	Plate – Base .....	1
70	00-294548-00001	Transformer (100-120/200-230 V., 60 Hz., 1 Ph.) .....	1
71	00-294548-00002	Transformer (200-230/400-460 V., 60 Hz., 3 Ph.) .....	1
72	00-294548-00003	Transformer (115 & 220 V., 50 Hz., 1 Ph.) .....	1
73	00-294548-00004	Transformer (200-240/380 V., 50 Hz., 3 Ph.) .....	1
74	SD-008-25	Self-Tapping Screw 10-16 x 1/2 Phil. Pan Hd., Type B .....	2
75	FE-021-19	Fuse (250 V., 3.2 Amp.) .....	2
76	00-294489	Fuse Board Assy. .....	1
77	SC-019-33	Mach. Screw 8-32 x 1/2 Bndg. Hd. .....	2
78	WL-007-07	Lockwasher #8 External Shakeproof .....	2
79	NS-009-12	Mach. Nut 8-32 Hex .....	2
80	00-087714-007-1	Relay (24 VAC) (D.P.D.T.) (Steam/Electric Heat) .....	1
81	SD-008-18	Self-Tapping Screw 8-18 x 3/8 Phil. Bndg. Hd., Type B .....	2
82	SC-041-11	Cap Screw 5/16-18 x 3/4 Hex Hd. (SST) .....	2
83	WL-006-23	Lockwasher 5/16 Medium (SST) .....	2
84	NS-015-11	Nut 5/16-18 Hex (SST) .....	2
85	00-473451	Label – Data .....	1
86	WL-006-16	Lockwasher 1/4 Light (RH Controls) .....	2
87	NS-015-01	Nut 1/4-20 Hex (RH Controls) .....	2
88	00-119114	Bracket – Control Box (RH Controls) .....	1
89	00-289090	Label – Switch .....	1
90	00-289060	Water Temperature Display Assy. .....	1
91	00-289360	Pin – Control Box .....	1
92	00-087711-00290	Switch – Rotary (4-Position) .....	1
	00-294325-00006	Jumper – Terminal Block (110-120/200-230 V., 60 Hz.) (115/220 V. 50 Hz., 1 Ph.) (Use with Item 38) .....	1
	00-293587-00001	Wire Harness (Use with Item 14) .....	1
	00-065890-00119	Terminal – Insulated (Use with Item 80) .....	2
	00-294334	Shunt Connector (Pkg. of 10) .....	1

\* For Old Style Board 00-473147, Use Kit 00-749670.

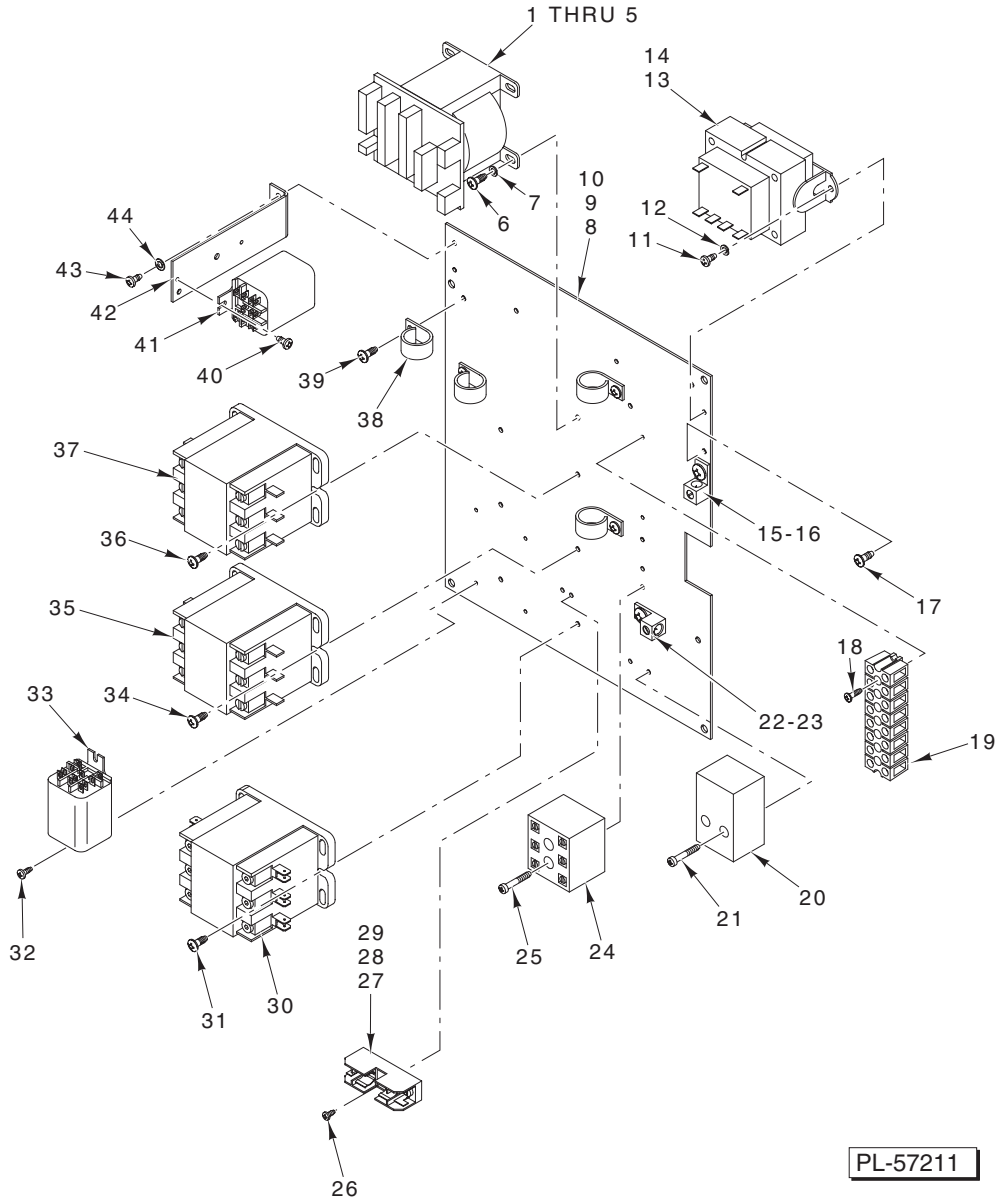


PL-57210

**CONTROL BOX  
(CURRENT CONSTRUCTION)**

## CONTROL BOX (CURRENT CONSTRUCTION)

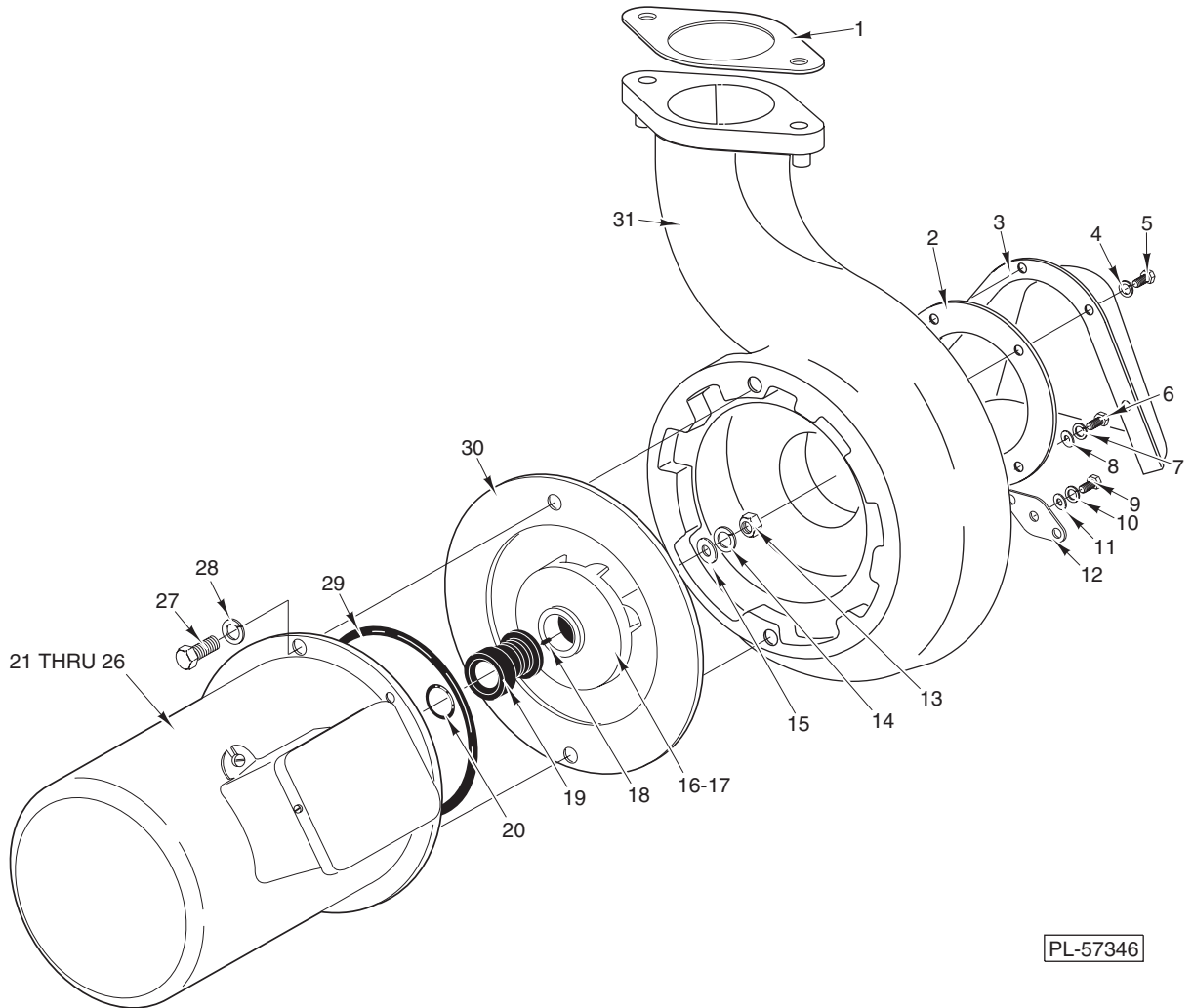
ILLUS. PL-57210	PART NO.	NAME OF PART	AMT.
1	00-749634-00001	Weldment – Box & Lid .....	1
2	SC-041-11	Cap Screw <sup>5</sup> / <sub>16</sub> -18 x <sup>3</sup> / <sub>4</sub> Hex Hd. (SST) .....	4
3	WS-017-08	Washer .....	4
4	NS-036-19	Stop Nut <sup>5</sup> / <sub>16</sub> -18 Hex .....	4
5	00-119244	Cap & Stud Assy. ....	3
6	00-119254	Retainer – Cap & Stud .....	3
7	00-767500-00031	O-Ring .....	3
8	WL-006-17	Lockwasher <sup>1</sup> / <sub>4</sub> Medium .....	3
9	NS-015-01	Nut <sup>1</sup> / <sub>4</sub> – 20 Hex (SST) .....	3
10	00-749873	Bracket – Control Box .....	1
11	SC-041-11	Cap Screw <sup>5</sup> / <sub>16</sub> -18 x <sup>3</sup> / <sub>4</sub> Hex Hd. (SST) .....	2
12	NS-036-19	Stop Nut <sup>5</sup> / <sub>16</sub> -18 Hex .....	2
13	00-748054	Bracket – Gas Heat (LH) .....	1
14	NS-015-11	Nut <sup>5</sup> / <sub>16</sub> -18 Hex .....	2
15	WL-006-23	Lockwasher <sup>5</sup> / <sub>16</sub> Medium (SST) .....	2
16	SC-041-11	Cap Screw <sup>5</sup> / <sub>16</sub> -18 x <sup>3</sup> / <sub>4</sub> Hex Hd. (SST) .....	2
17	00-118349-00006	Standoff – Reed Board ( <sup>9</sup> / <sub>16</sub> ) .....	2
18	00-118349-00007	Standoff – Reed Board ( <sup>3</sup> / <sub>8</sub> ) .....	2
19	NS-031-50	Stop Nut 6-32 Hex (SST) .....	4
20	00-749825	Board – Control Assy. ....	1
21	SD-008-17	Self-Tapping Screw 6-20 x <sup>3</sup> / <sub>8</sub> Phil. Bndg. Hd., Type B (Gas Heat/Vent Fan Control)....	2
22	00-087714-020-1	Relay (3 Pole) (Vent Fan Control) .....	1
23	SD-008-17	Self-Tapping Screw 6-20 x <sup>3</sup> / <sub>8</sub> Phil. Bndg. Hd., Type B (Electric Booster) .....	1
24	00-294436-00003	Block – Fuse (Electric Booster) .....	1
25	FE-022-28	Fuse (0.5 Amp., 250 V.) (Electric Booster) .....	1
26	SD-038-02	Self-Tapping Screw 6-20 x <sup>5</sup> / <sub>8</sub> Phil. Pan Hd., Type B (Electric Booster) .....	3
27	00-475458-00001	Board Assy. – Temperature Control (120-200 Deg. F) (Electric Booster) .....	1
28	00-476653	Spacer – Circuit Board #6 x <sup>5</sup> / <sub>16</sub> (Electric Booster) .....	4
29	SC-071-11	Mach. Screw 10-24 x <sup>3</sup> / <sub>8</sub> Phil. Truss Hd. ....	4
30	00-118349-00006	Standoff – Reed Board ( <sup>9</sup> / <sub>16</sub> ) .....	4
31	00-749636	Plate – Base Lid (Electric Booster or Vent Fan Control) .....	1
32	00-474669	Frame – Display .....	1
33	00-289060	Water Temperature Display Assy. ....	1
34	00-474670	Retainer – Display .....	1
35	NS-031-50	Stop Nut – Special 6-32 Hex (SST) .....	3
36	WS-023-01	Washer .....	2
37	00-294677-00003	Clamp – Wire ( <sup>3</sup> / <sub>4</sub> I.D.) .....	3
38	NS-031-50	Stop Nut 6-32 Hex (SST) .....	2
39	00-294677-00002	Clamp – Wire ( <sup>1</sup> / <sub>2</sub> I.D.) .....	1
40	00-294325-00009	Terminal Board Assy. ....	1
41	00-087711-286-1	Block – Switch (Electric Booster) .....	1
42	00-475934	Block – Contact (Push-On-Maintain) .....	1
43	00-112016	Retainer – Screw .....	1
44	00-112129	Screw – Captive .....	1
45	00-473451	Label – Data .....	1
46	00-438131-00060	Label – Warning (Electric Heat W/Booster) .....	1
47	00-438131-00042	Label – Warning (W/O Booster or Gas Heat) .....	1
48	00-748965	Label – Switch .....	1
49	00-289090	Label – Switch .....	1
50	00-475638-00001	Button – Push (Flush) .....	1
51	00-749909	Bracket – Control Box .....	1
52	00-087711-147-1	Switch – Wash/Rinse (Keyway Must be Located on Bottom of Switch) .....	1
53	WL-008-32	Lockwasher <sup>1</sup> / <sub>2</sub> Internal Shakeproof .....	1
54	00-087711-180-1	Switch – Toggle (D.P.D.T.) (Keyway Must be Located on Top of Switch) .....	1
55	WL-008-32	Lockwasher <sup>1</sup> / <sub>2</sub> Internal Shakeproof .....	1
	00-749887-00001	Cable Assy. – Rinse Thermister .....	1
	00-749853-00001	Harness – Wiring, HT Therm. (RH) .....	1



**CONTROL BOX ELECTRICAL COMPONENTS  
(CURRENT CONSTRUCTION)**

## CONTROL BOX ELECTRICAL COMPONENTS (CURRENT CONSTRUCTION)

ILLUS. PL-57211	PART NO.	NAME OF PART	AMT.
1	00-422905-00047	Angle – Hinge Pin (Use with Service Side Door).....	1
2	00-294548-00002	Transformer (200-230 V. & 400-460 V., 60 Hz., 3 Ph.).....	1
3	00-294548-00004	Transformer (200-415 V., 50 Hz., 3 Ph.).....	1
4	FE-021-19	Fuse (3.2 Amp., 250 V.).....	1
5	FE-009-26	Fuse (1.5 Amp., 250 V.).....	1
6	SD-008-25	Self-Tapping Screw 10-16 x 1/2 Phil. Pan Hd., Type B.....	2
7	WL-007-12	Lockwasher #10 External.....	2
8	00-749630	Plate – Base.....	1
9	SC-071-11	Mach. Screw 10-24 x 3/8 Phil. Truss Hd.....	4
10	WL-007-12	Lockwasher #10 External Shakeproof.....	4
11	SD-008-18	Self-Tapping Screw 8-18 x 3/8 Phil. Bndg. Hd., Type B (Electric Booster).....	2
12	WL-014-05	Lockwasher #8 External.....	2
13	00-294500-00033	Transformer (60 VA) (208/240/60/1) (208/240/60/3) (480/60/3) (200/50/3) (Electric Booster).....	1
14	00-294500-033-2	Transformer (60 VA) (380-415/50/3) (Electric Booster).....	1
15	00-116544-00002	Lug – Grounding.....	2
16	SD-035-77	Self-Tapping Screw Phil. Pan Hd., Type TT.....	2
17	SD-008-25	Self-Tapping Screw 10-16 x 1/2 Phil. Pan Hd., Type B (Electric Booster).....	1
18	SD-008-17	Self-Tapping Screw 6-20 x 3/8 Phil. Bndg. Hd., Type B.....	2
19	00-294325-013-6	Block – Terminal.....	1
20	00-294325-015-1	Block – Terminal (1 Ph.) (Electric Booster).....	1
21	SD-037-21	Self-Tapping Screw 8-32 x 1 Phil. Pan Hd., Type F (1 Ph.) (Electric Booster).....	2
22	00-118544-00002	Lug – Grounding (Electric Booster).....	1
23	SD-035-77	Self-Tapping Screw 1/4-20 x 3/8 Phil. Pan Hd., Type TT (Electric Booster).....	1
24	00-294325-015-1	Block – Terminal.....	1
25	SD-037-21	Self-Tapping Screw 8-32 x 1 Phil. Hd., Type F.....	2
26	SD-008-18	Self-Tapping Screw 8-18 x 3/8 Phil. Bndg. Hd., Type B (Gas Heat).....	2
27	00-294436-00002	Block – Fuse (Gas Heat).....	1
28	FE-015-01	Fuse (1.5 Amp., 200-240 V.) (Gas Heat).....	1
29	FE-022-86	Fuse (0.8 Amp., 380-480 V.) (Gas Heat).....	1
30	00-087713-041-2	Contactactor (40 Amp., 120 V.) (3-Pole) (Electric Booster).....	1
31	SD-008-25	Self-Tapping Screw 10-16 x 1/2 Phil. Pan Hd., Type B (Electric Booster).....	2
32	SD-008-17	Self-Tapping Screw 6-20 x 3/8 Phil. Bndg. Hd., Type B (Gas Heat).....	2
33	00-087714-020-1	Relay (3 Pole) (Gas Heat).....	1
34	SD-008-25	Self-Tapping Screw 10-16 x 1/2 Phil. Pan Hd., Type B (Electric Heat).....	2
35	00-087713-065-1	Contactactor – Magnetic (3-Pole) (Electric Heat).....	1
36	SD-008-25	Self-Tapping Screw 10-16 x 1/2 Phil. Pan Hd., Type B.....	2
37	00-087713-065-1	Contactactor – Magnetic (3-Pole).....	1
38	00-294677-00003	Clamp – Wire (3/4 I.D.).....	4
39	SD-008-25	Self-Tapping Screw 10-16 x 1/2 Phil. Pan Hd., Type B.....	4
40	SD-008-17	Self-Tapping Screw 6-20 x 3/8 Phil. Bndg. Hd., Type B.....	2
41	00-087714-020-1	Relay (3-Pole).....	1
42	00-437102	Bracket – Relay Mounting.....	1
43	SD-008-18	Self-Tapping Screw 8-18 x 3/8 Phil. Bndg. Hd., Type B.....	2
44	WL-014-05	Lockwasher #8 External Shakeproof.....	2
	00-476772	Board Assy. – Thermistor Simulator.....	1



**MOTOR AND PUMP**

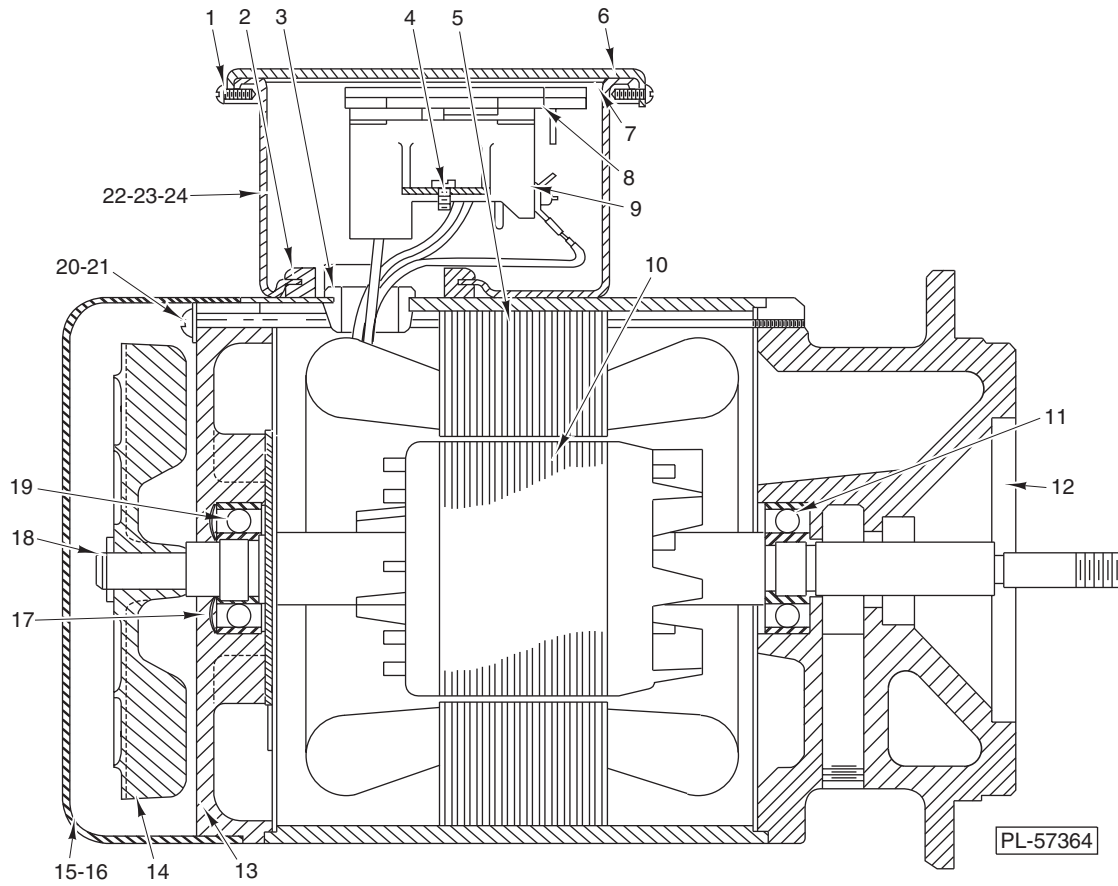
MOTOR AND PUMP

ILLUS.	PART NO.	NAME OF PART	AMT.
	PL-57346		
1	00-119054	Gasket – Pump Discharge .....	1
2	00-119050	Gasket – Pump Intake .....	1
3	00-118960	Shroud – Pump Intake .....	1
4	WL-006-23	Lockwasher <sup>5</sup> / <sub>16</sub> Medium (SST) .....	4
5	SC-041-11	Cap Screw <sup>5</sup> / <sub>16</sub> -18 x <sup>3</sup> / <sub>4</sub> Hex Hd. (SST) .....	4
6	SC-041-11	Cap Screw <sup>5</sup> / <sub>16</sub> -18 x <sup>3</sup> / <sub>4</sub> Hex Hd. (SST) .....	2
7	WL-006-23	Lockwasher <sup>5</sup> / <sub>16</sub> Medium (SST) .....	2
8	WS-017-08	Washer .....	2
9	SC-041-05	Cap Screw <sup>1</sup> / <sub>4</sub> -20 x <sup>5</sup> / <sub>8</sub> Hex Hd. ....	2
10	WL-006-17	Lockwasher <sup>1</sup> / <sub>4</sub> Medium .....	2
11	WS-003-48	Washer .....	2
12	00-119051	Gasket – Pump Drain Hole .....	1
13	NS-024-06	Acorn Nut <sup>7</sup> / <sub>16</sub> -20 .....	1
14	WL-006-32	Lockwasher <sup>7</sup> / <sub>16</sub> Light .....	1
15	WS-021-01	Washer .....	1
16	00-121567-00002	Impeller (50 Hz.) .....	1
17	00-118968	Impeller (60 Hz.) .....	1
18	KW-003-03	Key – Woodruff <sup>1</sup> / <sub>8</sub> x <sup>1</sup> / <sub>2</sub> Lg. ....	1
19	00-114696	Shaft Seal Assy. ( <sup>5</sup> / <sub>8</sub> ) .....	1
20	00-067500-00007	O-Ring .....	1
*21	ML-040523-000DG	Motor – Service (200-230/400-460 V., 60 Hz., 3 Ph.) .....	1
*22	ML-040523-000AS	Motor – Service (600 V., 60 Hz., 3 Ph.) .....	1
*23	00-474580-00002	Motor – Service (50 Hz., 3 Ph.) .....	1
**24	00-474834-00001	Motor (100-120/200-240 V., 50 Hz., 1 Ph.) .....	1
**25	00-474834-00002	Motor (100-120/200-240 V., 60 Hz., 1 Ph.) .....	1
**26	00-474834-00003	Motor (200-240/380-480 V., 50/60 Hz., 3 Ph.) .....	1
27	SC-041-29	Cap Screw <sup>3</sup> / <sub>8</sub> -16 x <sup>7</sup> / <sub>8</sub> Hex Hd., Wax Coated Threads .....	2
28	WL-006-28	Lockwasher <sup>3</sup> / <sub>8</sub> Medium .....	2
29	00-067500-00097	O-Ring .....	1
30	00-277836	Shim Kit (Motor to Pump) 1 Blue (0.005), 1 Brown (0.010), & 1 Yellow (0.020 Thk.) ..	1
31	00-276281	Shell – Pump .....	1
	00-892560	Shield – Drip (208-240 V., 60 Hz., 1 Ph.) .....	1
	00-473249	Screen Weldment – Pump Intake .....	1
*	00-288513	Motor & Impeller Assy. (200-230/400-460 V., 60 Hz., 3 Ph.) .....	1
**	00-748518-00002	Motor & Impeller Assy. (100-120/200-240 V., 50 Hz., 1 Ph.) .....	1
**	00-748518-00005	Motor & Impeller Assy. (100-120/200-240 V., 60 Hz., 1 Ph.) .....	1
**	00-748518-00006	Motor & Impeller Assy. (200-240/380-480 V., 50/60 Hz., 3 Ph.) .....	1
*	00-294505-00001	Wire Harness – Motor Therm. (RH Controls) .....	1
*	00-294523-00001	Wire Harness – Motor Therm. (LH Controls) .....	1

NOTE: Select shims to obtain 0.005 to 0.012 inch clearance between pump and impeller.

\* Hobart Motors Only.

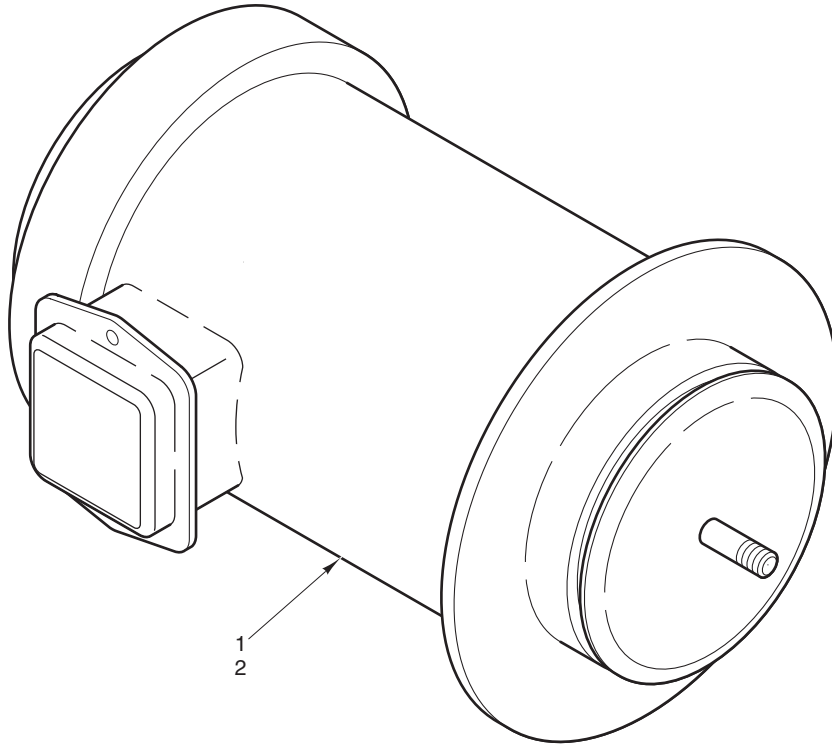
\*\* GE Motor.



**MOTOR (HOBART)**

MOTOR (HOBART)

ILLUS. PL-57364	PART NO.	NAME OF PART	AMT.
1	SD-012-45	Self-Tapping Screw 8-32 x <sup>5</sup> / <sub>16</sub> Pan Hd., Type T.....	2
2	00-060395	Grommet.....	1
3	00-079118	Bushing – Snap (Field Ring).....	1
4	SD-012-45	Self-Tapping Screw 8-32 x <sup>5</sup> / <sub>16</sub> Pan Hd., Type T.....	2
5	00-065478-101-1	Stator Assy. (200-230/400-460 V., 60 Hz.).....	1
6	00-113405	Cover – Terminal Box.....	1
7	00-114811	Gasket – Terminal Box.....	1
8	00-113417	Connector – Block Assy.....	1
9	00-113552	Terminal Block Base Assy.....	1
10	00-015747-00280	Rotor Assy.....	1
11	BB-020-18	Ball Bearing – N.D. #77503.....	1
12	00-121191-00002	Bracket – Bearing (Pump End) (50 Hz.).....	1
13	00-294321	Bracket – Bearing (Fan End).....	1
14	00-292466-00001	Fan – Ventilating.....	1
15	00-294322	Cover – Motor End.....	1
16	SC-009-65	Mach. Screw 8-32 x <sup>1</sup> / <sub>4</sub> Rd. Hd.....	2
17	SL-002-04	Spring – Loading.....	1
18	RR-004-17	Retaining Ring.....	1
19	BB-020-18	Ball Bearing – N.D. #77503.....	1
20	SC-060-68	Mach. Screw 10-24 x <sup>7</sup> / <sub>2</sub> Rd. Hd.....	4
21	WL-008-13	Lockwasher #10 Internal Shakeproof.....	4
22	00-113403	Box – Terminal.....	1
23	SD-015-27	Self-Tapping Screw 10-24 x <sup>5</sup> / <sub>16</sub> Pan Hd., Type TT.....	2
24	WL-007-12	Lockwasher #10 External Shakeproof.....	2

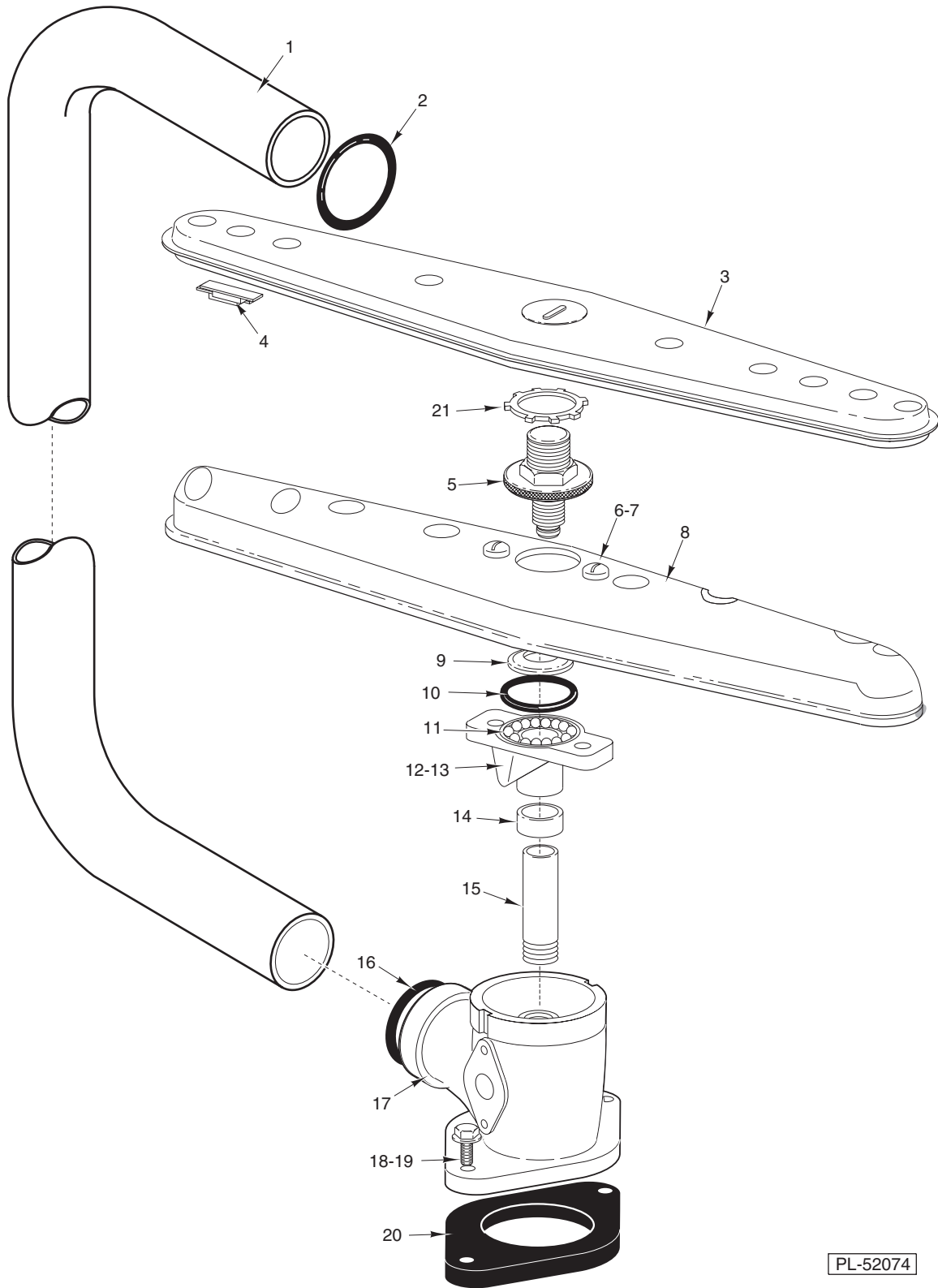


PL-57306

**MOTOR (GE)**

**MOTOR (GE)**

ILLUS. PL-57306	PART NO.	NAME OF PART	AMT.
1	00-892459-00003	Overload – Reset (2 Hp., 1 Ph.) .....	1
2	00-892459-00006	Overload – Reset (2 Hp., 3 Ph.) .....	1
3	00-892459-00004	Switch – Start (2 Hp., 1 Ph.) (Not Shown) .....	1
4	00-892459-00007	Cover – Fan (2 Hp., 3 Ph.) (Not Shown) .....	1
5	00-892459-00008	Fan Blade & Clip (2 Hp., 3 Ph.) (Not Shown) .....	1
6	00-892459-00009	Fan Blade (2 Hp., 1 Ph.) (Not Shown) .....	1



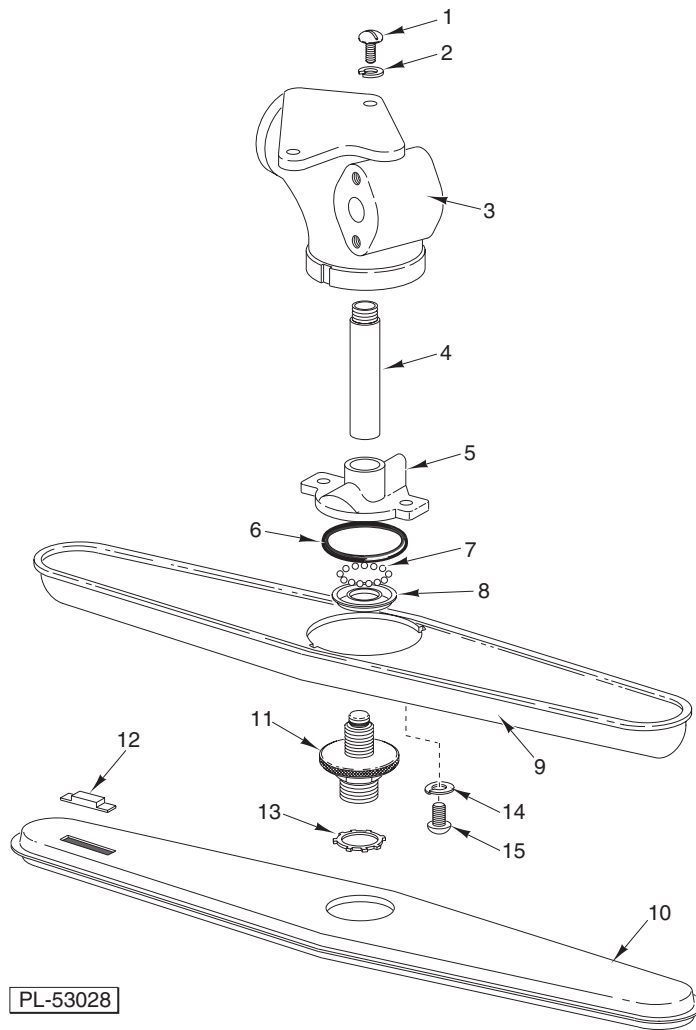
PL-52074

**LOWER WASH ARM**

**LOWER WASH ARM**

ILLUS. PL-52074	PART NO.	NAME OF PART	AMT.
1	00-473380	Tube – Wash .....	1
2	00-067500-00057	O-Ring .....	1
3	00-474679	Arm – Rinse .....	1
4	00-474674	Plug – Clean-Out (Sliding) (2 Per Arm) .....	1
5	00-473637	Bearing Assy. – Rinse Arm (Incls. Balls, Inner & Outer) .....	1
6	SC-066-06	Mach. Screw 10-24 x 1/2 Phil. Truss Hd. ....	2
7	WL-006-07	Lockwasher #10 Medium .....	2
8	00-287987	Wash Arm & Hub (Incls. Items 6, 7, & 9 thru 12) .....	1
9	00-286947	Retainer – Ball .....	1
10	00-067500-00019	O-Ring .....	1
11	BA-002-40	Ball 1/4 Dia. ....	13
12	00-286948	Hub .....	1
13	00-287140	Hub (Service Only) .....	1
14	00-286944	Spacer .....	1
15	00-474651	Shaft – Lower Wash Arm .....	1
16	00-067500-00057	O-Ring .....	1
17	00-119306	Tee – Lower Wash .....	1
18	SC-041-98	Cap Screw 3/8-16 x 2 1/4 Hex Hd. ....	2
19	WL-006-28	Lockwasher 3/8 Medium .....	2
20	00-474040	Spacer .....	1
21	00-474225	Ring – Locking .....	2
*	00-287152	Lower Wash Arm Kit (Incls. Items 9 thru 13) .....	1

\* For Servicing Wash Arms With Fabricated Hub.

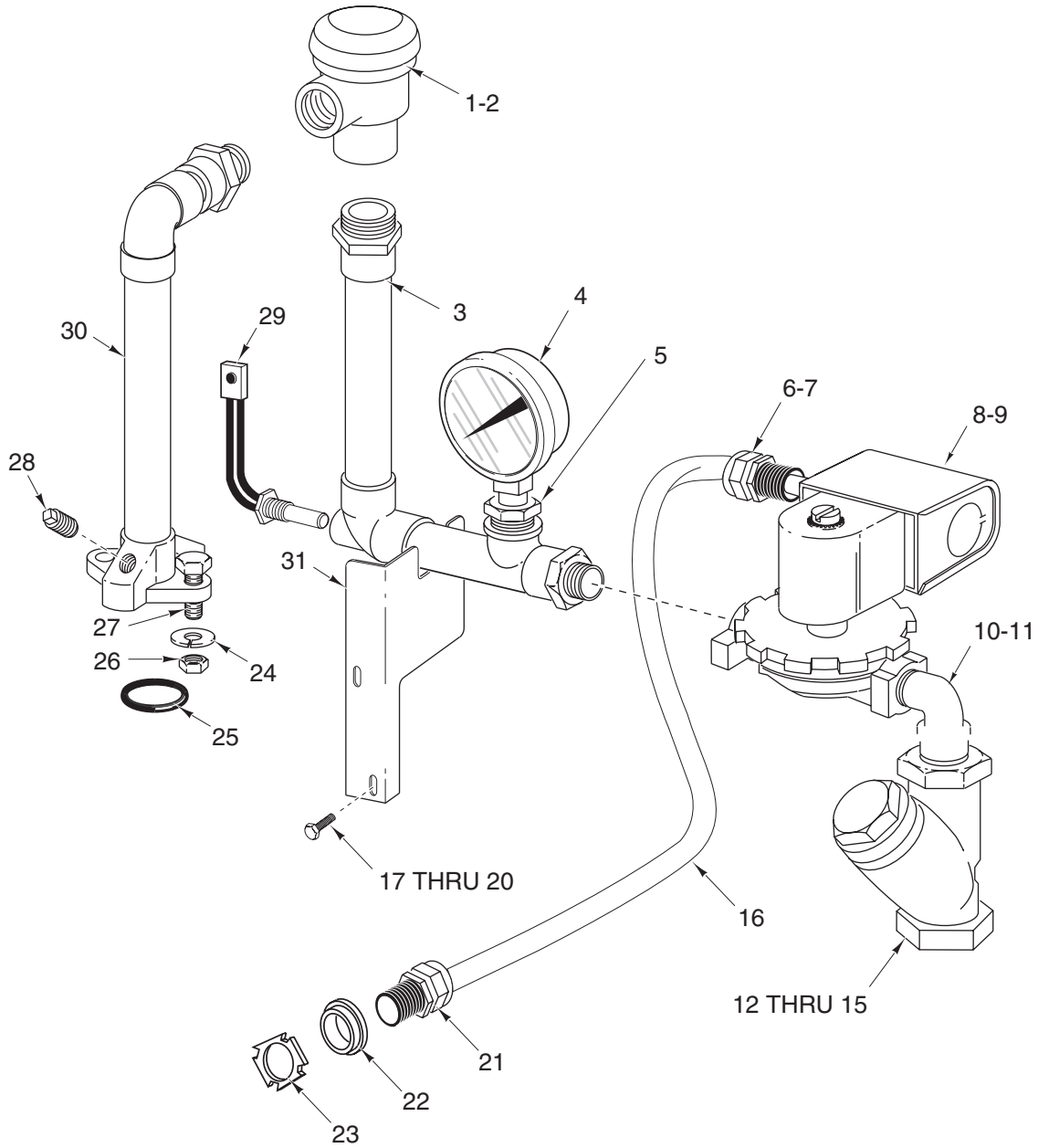


### UPPER WASH ARM

**UPPER WASH ARM**

ILLUS. PL-53028	PART NO.	NAME OF PART	AMT.
1	SC-053-15	Mach. Screw <sup>5</sup> / <sub>16</sub> -18 x <sup>1</sup> / <sub>2</sub> Truss Hd. (SST) .....	2
2	WL-006-23	Lockwasher <sup>5</sup> / <sub>16</sub> Medium (SST) .....	2
3	00-289084	Ell – Upper Wash .....	1
4	00-474652	Shaft – Upper Wash Arm .....	1
5	00-286948	Hub .....	1
6	00-067500-00019	O-Ring .....	1
7	BA-002-40	Ball <sup>1</sup> / <sub>4</sub> Dia. ....	13
8	00-286947	Retainer – Ball .....	1
9	00-287987	Wash Arm & Hub Assy. (Incls. Items 5 thru 8) .....	1
10	00-474679	Arm – Rinse .....	1
11	00-473637	Bearing Assy. – Rinse Arm (Incls. Balls, Inner & Outer) .....	1
12	00-474674	Plug – Clean-Out (Sliding) (2 Per Arm) .....	1
13	00-474225	Ring – Locking .....	1
14	WL-006-07	Lockwasher #10 Medium .....	2
15	SC-066-06	Mach. Screw 10-24 x <sup>1</sup> / <sub>2</sub> Phil. Truss Hd. ....	2
*	00-287151	Upper Wash Arm Kit (Incls. Items 6, 7, & 8) .....	1

\* For Servicing Wash Arms With Fabricated Hub.



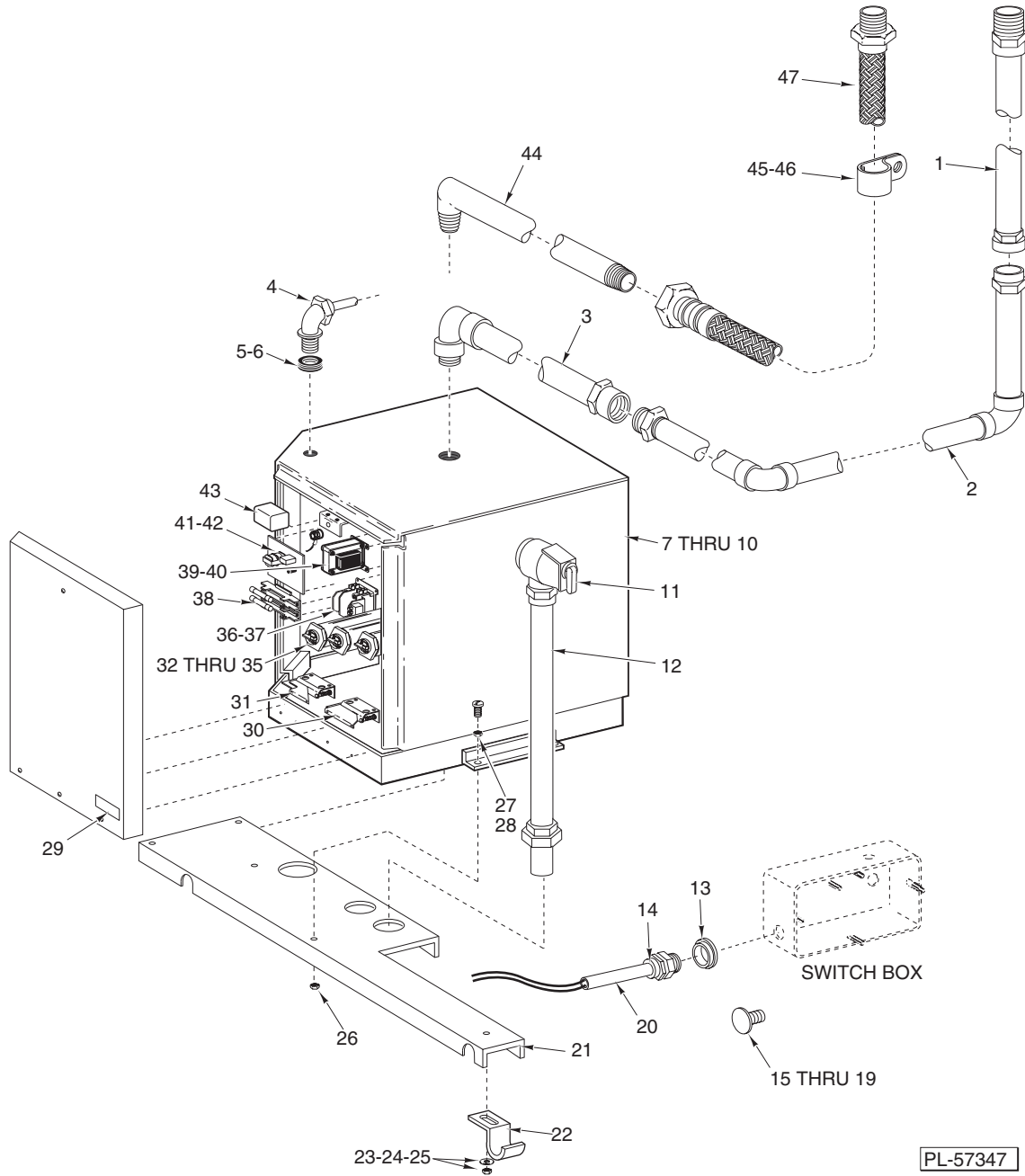
PL-57305

**OUTSIDE RINSE PIPING  
(ML-110412 & ML-110414)**

**OUTSIDE RINSE PIPING\*  
(ML-110412 & ML-110414)**

ILLUS. PL-57305	PART NO.	NAME OF PART	AMT.
1	00-277112	Vacuum Breaker (3/4 In.) .....	1
2	00-118270	Service Kit – Vacuum Breaker (Float & Seal Assy.) .....	1
3	00-473358	Connector Assy. (Vacuum Breaker to Solenoid Valve).....	1
4	00-328247	Gauge – Water Pressure .....	1
5	FP-027-07	Bushing – Pipe 1/2 to 1/4 .....	1
6	FE-022-84	Connector – Strain Relief .....	1
7	FE-006-05	Lock Nut 1/2 .....	1
8	00-271002-00003	Valve – Solenoid (24 VAC) (50-60 Hz.).....	1
9	00-271839-00003	Coil – Solenoid Valve (20-30 V.) .....	1
10	FP-015-24	Street L – Pipe 3/4 x 90 Deg. (Brass) .....	1
11	FP-041-50	Pipe 3/4 x 1 3/8 TBE (Brass).....	1
12	00-186922	Strainer – Line (3/4 In.) (Incls. Items 13, 14, & 15).....	1
13	00-186925	Screen – 3/4 In. Line Strainer .....	1
14	00-186924	Gasket – Heater .....	1
15	00-186923	Plug – Branch .....	1
16	00-294853-046-3	Fill Valve Cable (RH Controls).....	1
17	SC-041-05	Cap Screw 1/4-20 x 5/8 Hex Hd. ....	2
18	WS-003-48	Washer .....	2
19	WL-006-17	Lockwasher 1/4 Medium .....	2
20	NS-015-01	Nut 1/4-20 Hex (SST) .....	2
21	FE-022-84	Connector – Strain Relief .....	1
22	FE-008-10	1/2 Gasket Assy. ....	1
23	FE-006-05	Lock Nut 1/2 .....	1
24	WL-006-23	Lockwasher 5/16 Medium (SST) .....	2
25	00-067500-00012	O-Ring .....	1
26	NS-015-11	Nut 5/16-18 Hex (SST).....	2
27	SC-041-14	Cap Screw 5/16-18 x 1 1/8 Hex Hd. (SST) .....	2
28	00-119127	Pipe Plug .....	2
29	00-294692	Rinse Probe Assy. ....	1
30	00-288941-00002	Connector Assy. (Vacuum Breaker to Inside Rinse).....	1
31	00-473361	Bracket – Outside Rinse Piping.....	1
	00-271838	Service Kit – 3/4 In. Solenoid Valve .....	1
	00-083376	Wire Tie .....	2
	00-476143	Kit – Piping (W/O Booster) (Incls. Item 3).....	1

\* Includes ML-110211 & ML-110212.



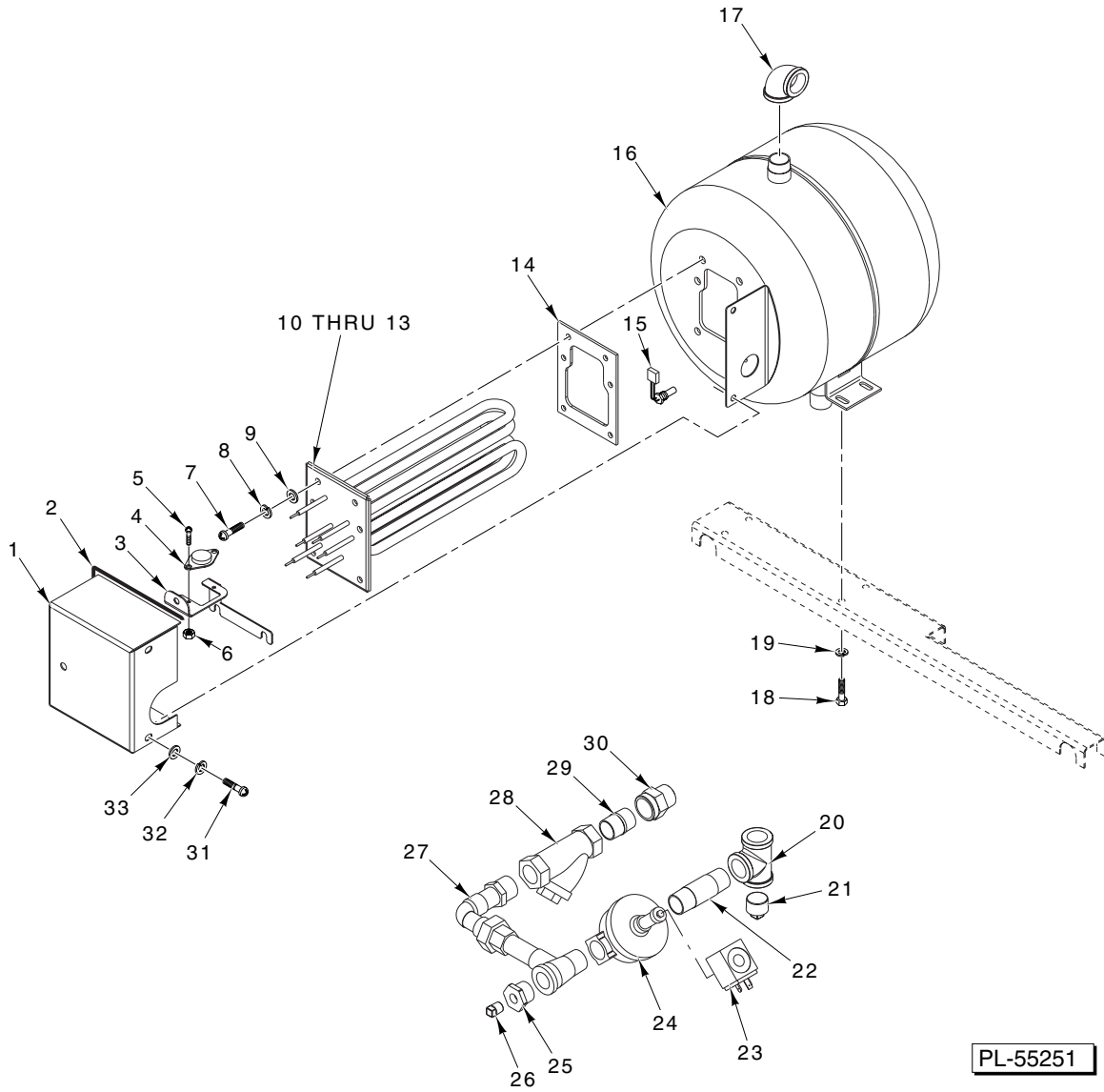
**BOOSTER AND PIPING  
(ML-110412 & ML-110414)**

PL-57347

**BOOSTER AND PIPING  
(ML-110412 & ML-110414)**

ILLUS. PL-57347	PART NO.	NAME OF PART	AMT.
1	00-274207-00002	Booster Piping .....	1
2	00-274206	Booster Piping .....	1
3	00-274205	Booster Piping (Or Use 00-474563) .....	1
4	FE-024-04	Strain Relief 1/2 x 90 Deg. ....	1
5	FE-008-10	1/2 Gasket Assy. ....	1
6	FE-024-88	Lock Nut – Electric 1/2 (Nylon) .....	1
7	00-274023-00002	Booster – Electric Water (208 V., 50/60 Hz., 3 Ph.) .....	1
8	00-274023-00004	Booster – Electric Water (230/240 V., 50/60 Hz., 3 Ph.) .....	1
9	00-274023-00005	Booster – Electric Water (460/480 V., 50/60 Hz., 3 Ph.) .....	1
10	00-274023-00006	Booster – Electric Water (600 V., 50/60 Hz., 3 Ph.) .....	1
11	00-274162	Valve – Pressure Temp. Relief 3/4 .....	1
12	00-271968	Temp. Relief Valve Piping Assy. ....	1
13	FE-008-10	1/2 Gasket Assy. ....	1
14	FE-022-84	Connector – Strain Relief .....	1
15	00-119244	Cap & Stud Assy. ....	1
16	00-119254	Retainer – Cap & Stud .....	1
17	00-067500-00031	O-Ring .....	1
18	WL-006-17	Lockwasher 1/4 Medium .....	2
19	NS-015-01	Nut 1/4-20 Hex (SST) .....	1
20	00-476761-00003	Booster Cable Assy. ....	1
21	00-271509-00001	Support – Booster Weldment .....	1
22	00-274163	Clamp – Booster .....	2
23	WS-022-34	Washer .....	2
24	WL-006-17	Lockwasher 1/4 Medium .....	2
25	NS-015-01	Nut 1/4-20 Hex (SST) .....	2
26	NS-015-01	Nut 1/4-20 Hex (SST) .....	4
27	WL-006-17	Lockwasher 1/4 Medium .....	4
28	SC-041-05	Cap Screw 1/4-20 x 5/8 Hex Hd. ....	4
29	0F-019204	Label – UL Warning .....	1
30	00-274161	Thermostat – Control .....	1
31	00-274160	Thermostat – High Limit .....	1
32	00-274157-00001	Element – Heater (200 V., 3200 W.) (208 V., 3460 W.) .....	1
33	00-274157-00002	Element – Heater (240 V., 3800 W.) .....	1
34	00-274157-00003	Element – Heater (277 V., 3800 W.) (Use on 480 V. Machine) .....	1
35	00-274158	Gasket – Heater Element .....	3
36	00-274198	Contacto (120 V., Coil; 1 Ph., 2 Pole) .....	1
37	00-087713-066-4	Contacto – Magnetic (110-120 V., Coil; 3 Ph., 3 Pole) .....	1
38	FE-016-40	Fuse (1.0 Amp., 250 V.) .....	1
39	00-274024	Transformer (40 VA, 208-240 V.) .....	1
40	00-274025	Transformer (40 VA, 480 V.) .....	1
41	00-274159	Board – Low Water Cut-Off (120 VAC) .....	1
42	00-274159-00002	Board – Low Water Cut-Off (24 VAC) .....	1
43	00-087714-007-1	Relay (24 VAC) (D.P.D.T.) .....	1
44	00-475237	Pipe – Booster Output .....	1
45	NS-031-15	Stop Nut – Special 10-24 Hex (SST) .....	1
46	00-078752-00005	Clamp (Flex Hose) .....	1
47	00-475254-00004	Hose – Flex (Booster Piping) .....	1
	00-083376	Wire Tie .....	1

Note: Booster Voltage Specified.

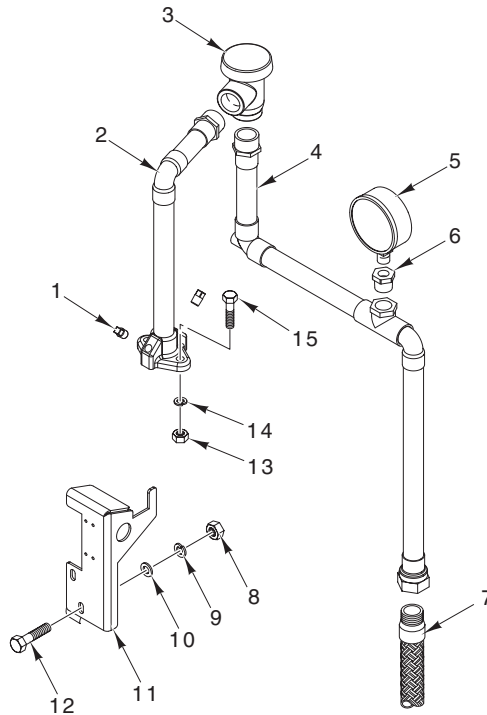


PL-55251

**BOOSTER TANK  
(ML-110973 & ML-110974)**

**BOOSTER TANK  
(ML-110973 & ML-110974)**

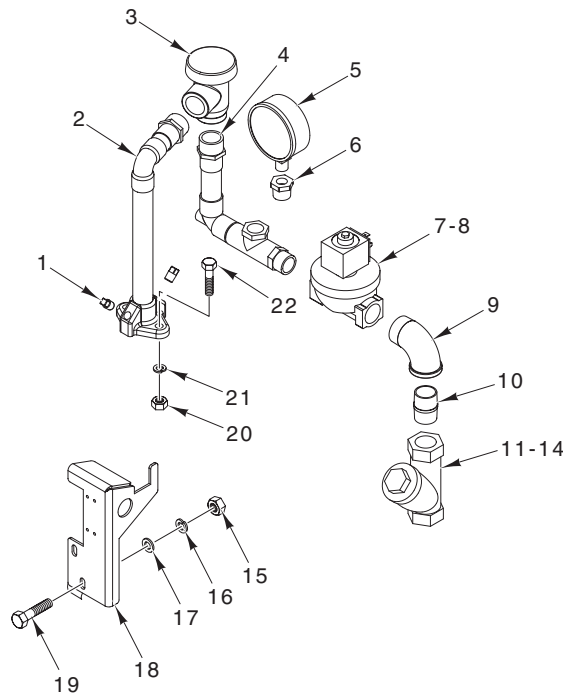
ILLUS.	PART NO.	NAME OF PART	AMT.
PL-55251			
1	00-749604	Lid – Heat Box (Electric Booster) .....	1
2	00-749991	Gasket – Lid (Heat Box) .....	1
3	00-749837	Bracket – High Limit Protector .....	1
4	00-271123	Protector – High Limit .....	1
5	SC-021-08	Mach. Screw 6-32 x 3/8 Rd. Hd. (SST) .....	2
6	NS-031-50	Stop Nut 6-32 Hex (SST) .....	2
7	SC-041-01	Cap Screw 1/4-20 x 3/4 Hex Hd. (SST) .....	6
8	WL-006-17	Lockwasher 1/4 Medium .....	6
9	WS-017-06	Washer .....	6
10	00-749554-00001	Heater (13 kW) (208 V.) .....	1
11	00-749554-00002	Heater (13 kW) (240 V.) .....	1
12	00-749554-00003	Heater (13 kW) (480 V.) .....	1
13	00-749554-00004	Heater (13 kW) (380 V.) .....	1
14	00-749555	Gasket (13 kW) (Electric Heater) .....	1
15	00-294692	Probe – Thermistor .....	1
16	00-749581	Tank – Weldment (Electric Booster) .....	1
17	FP-015-23	Elbow – Pipe 3/4 x 90 Deg. (Brass) .....	1
18	SC-041-50	Cap Screw 1/4-20 x 1/2 Hex Hd. ....	4
19	WL-006-17	Lockwasher 1/4 Medium .....	4
20	FP-019-28	Tee – Pipe 3/4 x 3/4 x 3/4 (Brass) .....	1
21	FP-028-19	Pipe Plug 3/4 Sq. Hd. (Brass) .....	1
22	FP-041-59	Pipe 3/4 x 2 1/2 TBE (Brass) .....	1
23	00-749936-00001	Coil – Solenoid Valve (24 V.) .....	1
24	00-749890-00001	Valve – Solenoid (3/4 In.) (Incls. Item 23) .....	1
25	FP-027-15	Bushing – Pipe 3/4 to 1/4 .....	1
26	FP-028-07	Pipe Plug 1/4 Sq. Hd. ....	1
27	00-749579	Piping – Inlet, Solder .....	1
28	00-186922	Strainer – Line 3/4 (Brass) .....	1
29	FP-041-50	Pipe 3/4 x 1 3/8 TBE (Brass) .....	1
30	00-328818-00002	Regulator – Flow .....	1
31	SC-041-50	Cap Screw 1/4-20 x 1/2 Hex Hd. ....	3
32	WL-006-17	Lockwasher 1/4 Medium .....	3
33	WS-017-06	Washer .....	3
	00-749939	Kit – Service 3/4 In. Valve (Use with Item 24) .....	1
	00-546292	Sealer .....	AR



PL-57368

**OUTSIDE RINSE PIPING W/BOOSTER  
(ML-110973 & ML-110974)**

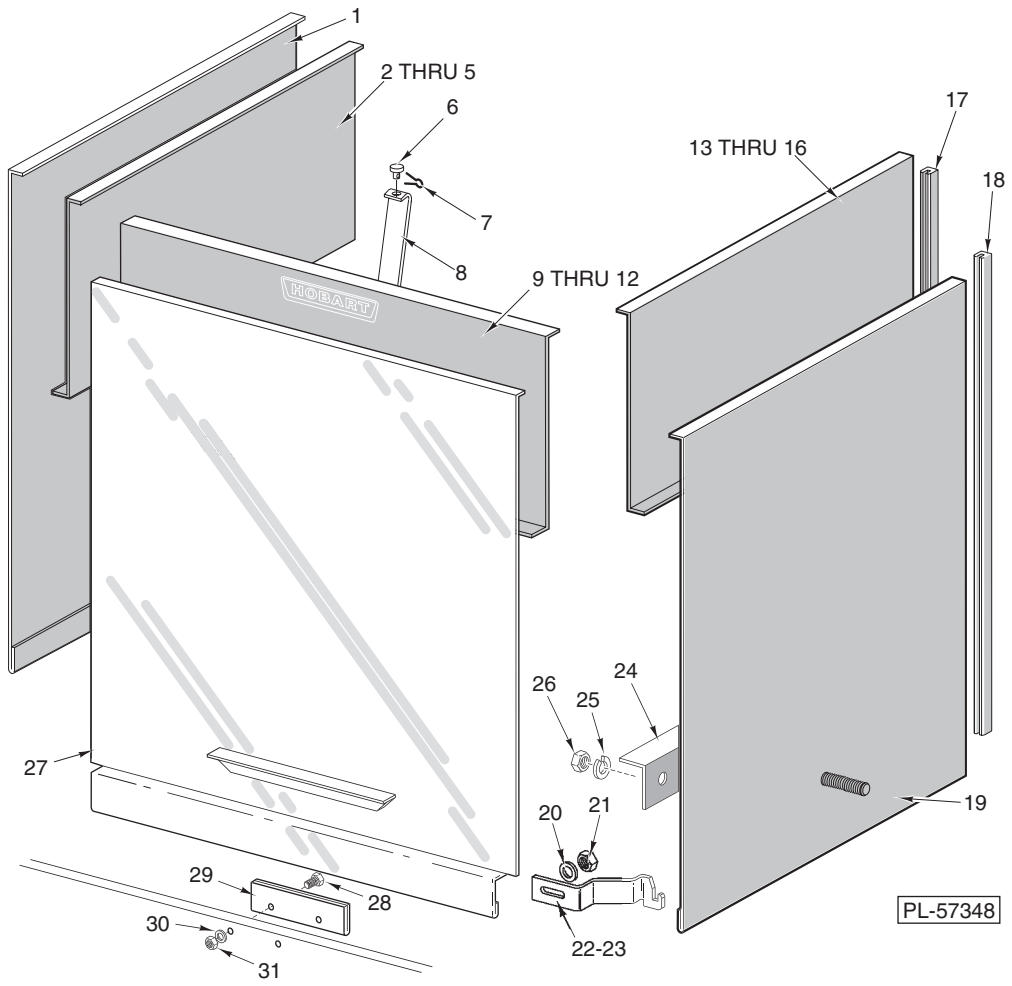
ILLUS.	PART NO.	NAME OF PART	AMT.
PL-57368			
1	00-119127	Pipe Plug 1/8 Sq. Hd. ....	2
2	00-475170	Piping Assy. (Chamber to Vacuum Breaker) .....	1
3	00-277112	Vacuum Breaker (3/4) .....	1
4	00-749629	Piping Assy. (Vacuum Breaker to Hose) .....	1
5	00-328247	Gauge – Water Pressure .....	1
6	FP-027-07	Bushing – Pipe 1/2 to 1/4 (Brass) .....	1
7	00-749153-00008	Hose – Water 3/4 x 70 In. Braided (SST) .....	1
8	NS-015-01	Nut 1/4-20 Hex (SST) .....	2
9	WL-006-17	Lockwasher 1/4 Medium .....	2
10	WS-017-06	Washer .....	2
11	00-749984	Bracket – Outside Fill Piping .....	1
12	SC-041-05	Cap Screw 1/4-20 x 5/8 Hex Hd. ....	2
13	NS-015-11	Nut 5/16-18 Hex (SST) .....	2
14	WL-006-23	Lockwasher 5/16 Medium (SST) .....	2
15	SC-041-14	Cap Screw 5/16-18 x 1 1/8 Hex Hd. (SST) .....	2
	00-546292	Sealer .....	AR



PL-57369

**OUTSIDE RINSE PIPING W/O BOOSTER  
(ML-110973 & ML-110974)**

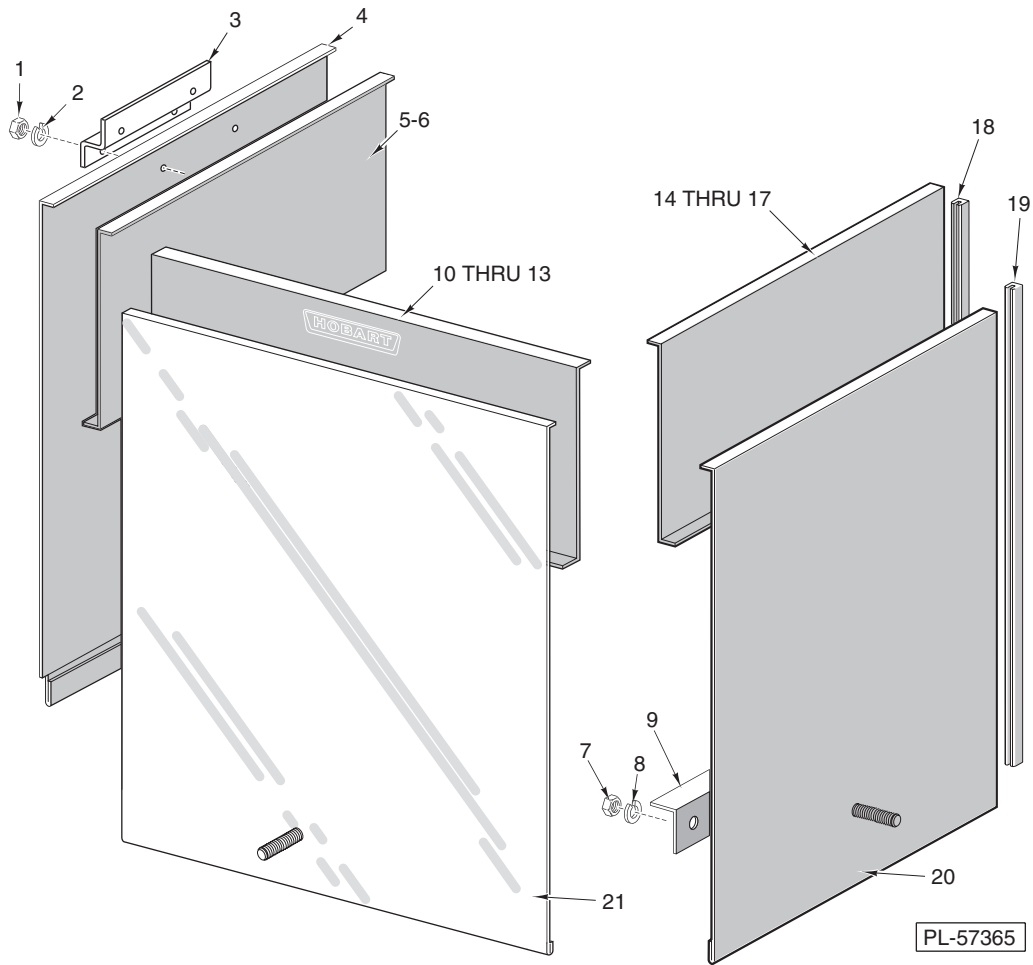
ILLUS.	PART NO.	NAME OF PART	AMT.
	PL-57369		
1	00-119127	Pipe Plug 1/8 Sq. Hd. ....	2
2	00-475170	Piping Assy. (Chamber to Vacuum Breaker) ....	1
3	00-277112	Vacuum Breaker (3/4) ....	1
4	00-749940	Piping Assy. (Vacuum Breaker to Valve) ....	1
5	00-328247	Gauge – Water Pressure ....	1
6	FP-027-07	Bushing – Pipe 1/2 to 1/4 (Brass) ....	1
7	00-749890-00001	Valve – Solenoid (3/4 In.) (Incls. Item 8) ....	1
8	00-749936-00001	Coil – Solenoid Valve (24 VAC) ....	1
9	FP-015-24	Elbow – Pipe 3/4 x 90 Deg. (Brass) ....	1
10	FP-041-50	Pipe 3/4 x 1 3/8 TBE (Brass) ....	1
11	00-186922	Strainer – Line 3/4 (Brass) ....	1
12	00-749802-00003	Screen (80 Mesh) ....	1
13	00-749802-00002	Gasket ....	1
14	00-749802-00001	Cap ....	1
15	NS-015-01	Nut 1/4-20 Hex (SST) ....	2
16	WL-006-17	Lockwasher 1/4 Medium ....	2
17	WS-017-06	Washer ....	2
18	00-749984	Bracket – Outside Fill Piping ....	1
19	SC-041-05	Cap Screw 1/4-20 x 5/8 Hex Hd. ....	2
20	NS-015-11	Nut 5/16-18 Hex (SST) ....	2
21	WL-006-23	Lockwasher 5/16 Medium (SST) ....	2
22	SC-041-14	Cap Screw 5/16-18 x 1 1/8 Hex Hd. (SST) ....	2
	00-749939	Kit – Service 3/4 Valve (Use with Item 7) ....	1
	00-546292	Sealer ....	AR
	00-749887-00008	Cable – Fill Valve ....	1



**DOOR  
(STRAIGHT-THRU)**

**DOOR  
(STRAIGHT-THRU)**

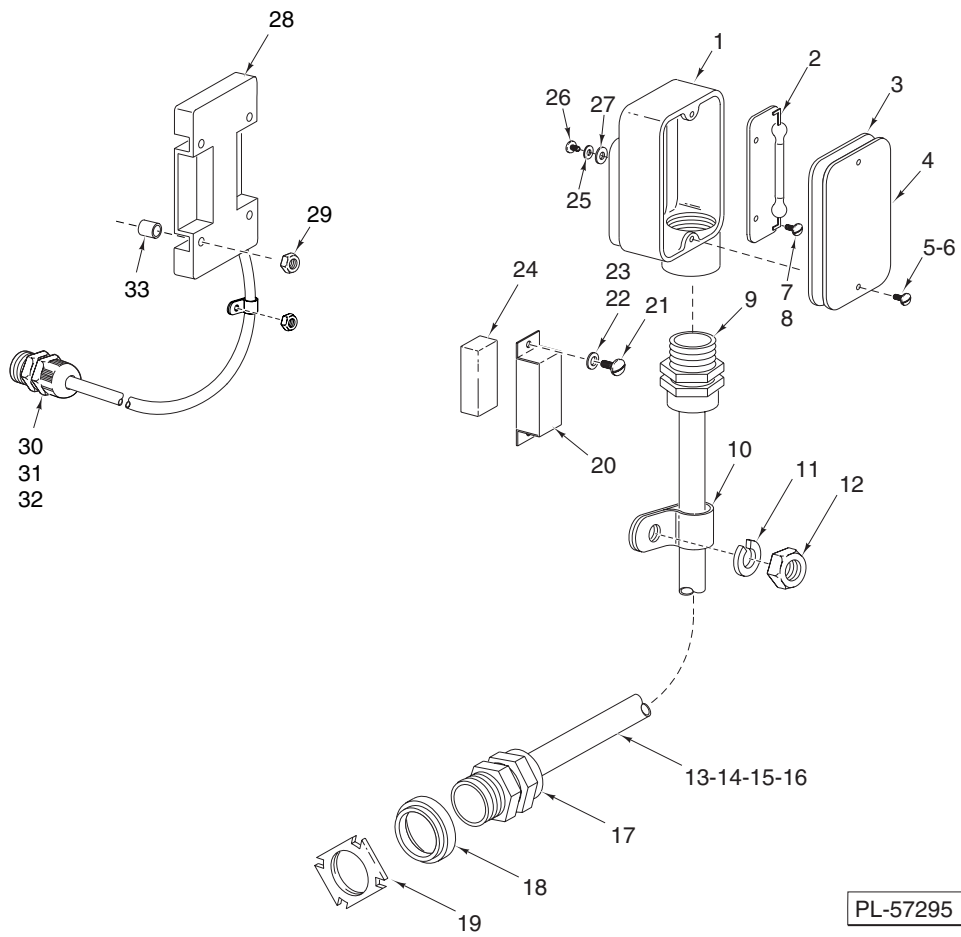
ILLUS. PL-57348	PART NO.	NAME OF PART	AMT.
1	00-749609-00002	Door – Counterbalanced (LH) .....	1
2	00-749759-00001	Door Weldment – Top (LH) .....	1
3	00-473366	Stop – Door .....	1
4	WL-006-06	Lockwasher #10 Light.....	2
5	SC-021-22	Mach. Screw 10-24 x 3/8 Rd. Hd. (SST) .....	2
6	00-119103	Rivet – Flat Hd. ....	1
7	PC-005-02	Cotter Pin 1/16 x 1/2 (SST) .....	1
8	00-473365	Latch – Inspection Door.....	1
9	00-474623	Door – Top Assy. ....	1
10	00-473366	Stop – Door .....	1
11	WL-006-06	Lockwasher #10 Light.....	2
12	SC-021-22	Mach. Screw 10-24 x 3/8 Rd. Hd. (SST) .....	2
13	00-749759-00001	Door Weldment – Top (RH).....	1
14	00-473366	Stop – Door .....	1
15	WL-006-06	Lockwasher #10 Light.....	2
16	SC-021-22	Mach. Screw 10-24 x 3/8 Rd. Hd. (SST) .....	2
17	00-112378-00051	Slide – Door .....	6
18	00-112378-00023	Guide – Door .....	6
19	00-749609-00001	Door – Counterbalanced (RH).....	1
20	WS-017-08	Washer .....	2
21	NS-018-06	Jam Nut 5/16-18 Hex .....	2
22	00-475150-00001	Bracket – Door Lock (RH).....	1
23	00-475150-00002	Bracket – Door Lock (LH) (Not Shown) .....	1
24	00-473367	Bracket – Door Stop (Use with Items 1, 19, & 27) .....	3
25	WL-006-17	Lockwasher 1/4 Medium .....	6
26	NS-015-01	Nut 1/4-20 Hex (SST) .....	6
27	00-474735-00001	Door – Inspection Weldment .....	1
28	SC-053-16	Mach. Screw 5/16-18 x 5/8 Truss Hd. ....	2
29	NS-047-82	Stop Nut – Special 1/4-20 Hex .....	1
30	WL-006-17	Lockwasher 5/16 Medium .....	2
31	NS-015-11	Nut 5/16-18 Hex (SST) .....	2



**DOOR  
(CORNER)**

**DOOR  
(CORNER)**

ILLUS. PL-57365	PART NO.	NAME OF PART	AMT.
1	NS-015-01	Nut 1/4-20 Hex (SST) .....	4
2	WL-006-17	Lockwasher 1/4 Medium .....	4
3	00-474358	Retainer – Door .....	1
4	00-749171	Door – Pivot .....	1
5	00-749759-00002	Door Weldment – Top (LH) (Previous Construction) .....	1
6	00-474779-00002	Door Weldment – Top (LH) (Current Construction) .....	1
7	NS-015-01	Nut 1/4-20 Hex (SST) .....	4
8	WL-006-17	Lockwasher 1/4 Medium .....	4
9	00-473367	Bracket – Door Stop .....	2
10	00-474623	Door – Top Assy. ....	1
11	00-473366	Stop – Door .....	1
12	WL-006-06	Lockwasher #10 Light .....	2
13	SC-021-22	Mach. Screw 10-24 x 3/8 Rd. Hd. (SST) .....	2
14	00-749759-00001	Door Weldment – Top (RH) .....	1
15	00-473366	Stop – Door .....	1
16	WL-006-06	Lockwasher #10 Light .....	2
17	SC-021-22	Mach. Screw 10-24 x 3/8 Rd. Hd. (SST) .....	2
18	00-112378-00051	Slide – Door .....	4
19	00-112378-00023	Guide – Door .....	4
20	00-749609-00001	Door – Counterbalanced (RH) .....	1
21	00-749609-00002	Door – Counterbalanced (LH) .....	1

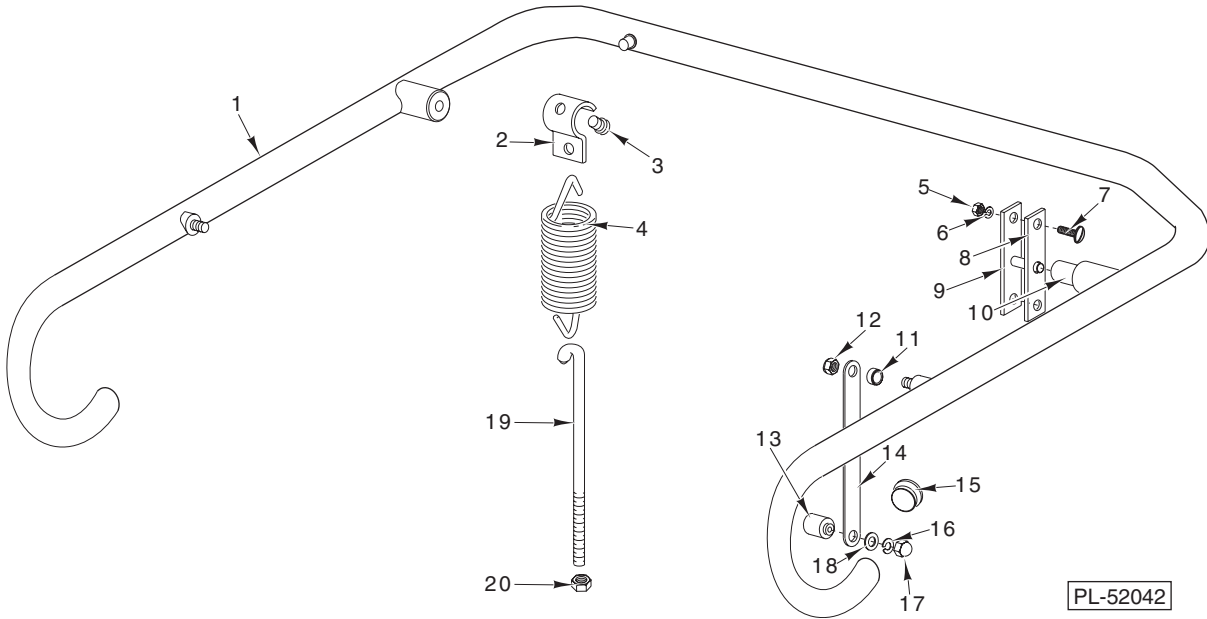


PL-57295

### DOOR INTERLOCK

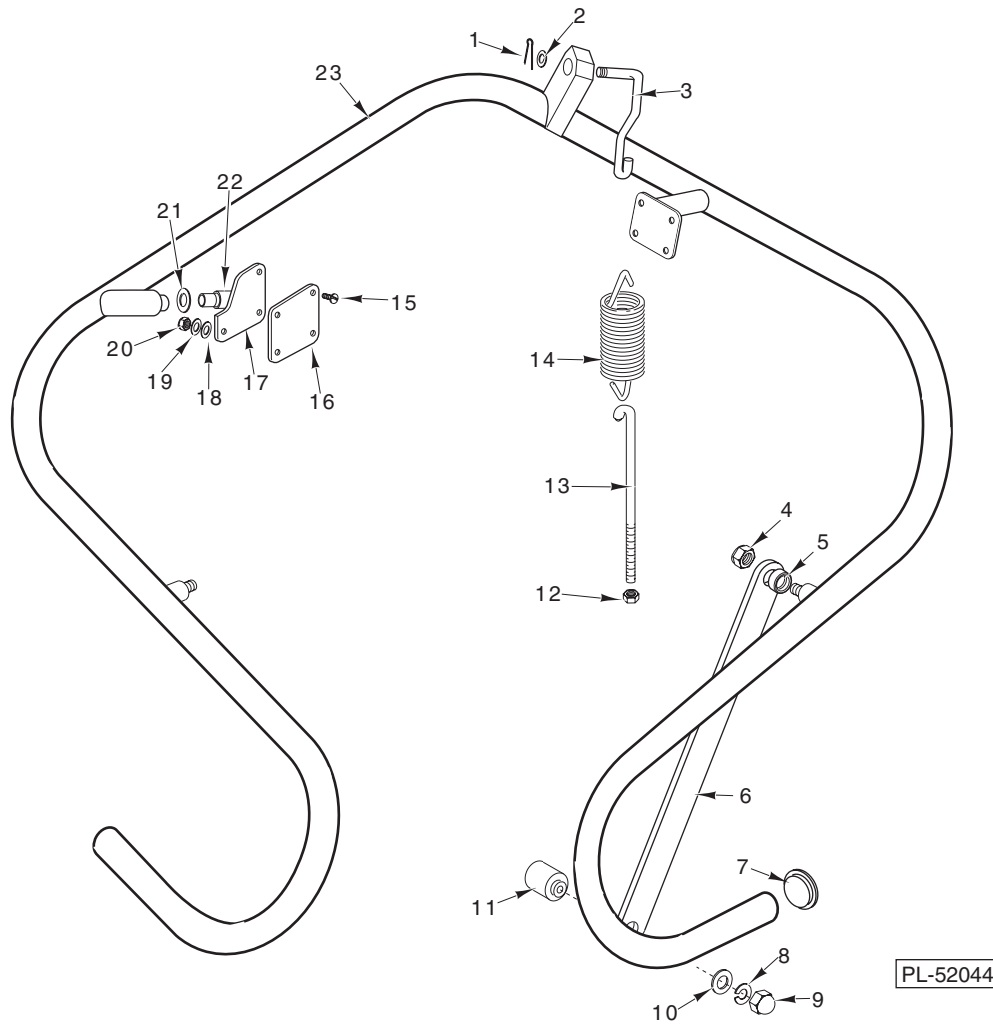
**DOOR INTERLOCK**

ILLUS. PL-57295	PART NO.	NAME OF PART	AMT.
1	00-436069	Housing – Cycle Switch .....	1
2	00-436071	Retainer – Switch Weldment (Switch Included) .....	1
3	00-436073	Gasket – Housing .....	1
4	00-436072	Cover – Housing .....	1
5	SC-093-03	Mach. Screw 8-32 x 3/8 Phil. Pan Hd. (SST) .....	2
6	WL-006-02	Lockwasher #8 Medium .....	2
7	SC-115-26	Mach. Screw 6-32 x 5/16 Pan Hd. ....	2
8	WL-006-42	Lockwasher #6 Medium .....	2
9	FE-022-84	Connector – Strain Relief .....	1
10	00-078752-00002	Retainer (3/4 In.) .....	4
11	WL-006-07	Lockwasher #10 Medium .....	2
12	NS-011-18	Mach. Nut 10-24 Hex (SST) .....	2
13	00-294514	Door Interlock Cable Assy. (RH Controls) (Previous Construction) .....	1
14	00-294514-00012	Door Interlock Assy. (RH Controls) (Current Construction) .....	1
15	00-294514-00002	Door Interlock Cable Assy. (LH Controls) (Previous Construction) .....	1
16	00-294514-00013	Door Interlock Assy. (LH Controls) (Current Construction) .....	1
17	FE-022-84	Connector – Strain Relief .....	1
18	FE-008-10	1/2 Gasket Assy. (Previous Construction) .....	1
19	FE-006-05	Lock Nut 1/2 (Previous Construction) .....	1
20	00-435950	Retainer – Magnet .....	1
21	SC-115-26	Mach. Screw 6-32 x 5/16 Pan Hd. ....	2
22	WS-023-01	Washer .....	2
23	NS-031-50	Stop Nut 6-32 Hex (SST) .....	2
24	00-436091	Magnet – Door Cycle Switch .....	1
25	WL-006-07	Lockwasher #10 Medium .....	2
26	SC-066-06	Mach. Screw 10-24 x 1/2 Phil. Truss Hd. ....	2
27	WS-029-79	Washer .....	2
28	00-749348-00002	Switch – Door .....	1
29	NS-031-50	Stop Nut 6-32 Hex (SST) .....	4
30	FE-008-10	1/2 Gasket Assy. (Previous Construction) .....	1
31	FE-024-88	Lock Nut – Electric 1/2 (Nylon) .....	1
32	FE-022-84	Connector – Strain Relief .....	1
33	00-118349-00004	Stand Off – Reed Board (1/4 Lg.) .....	2
	00-436910	Kit – Door Interlock (Incls. Items 1 thru 8 & 20 thru 27) .....	1



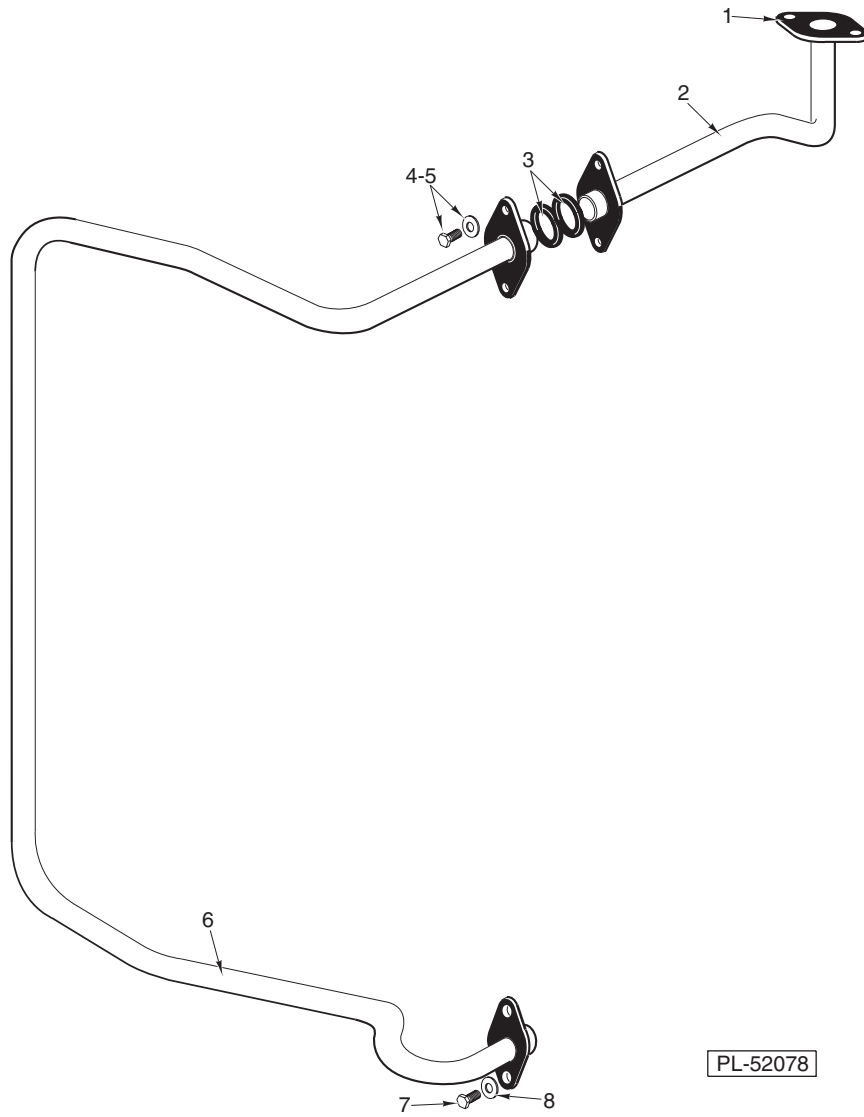
**DOOR LIFT  
(STRAIGHT-THRU)**

ILLUS.	PART NO.	NAME OF PART	AMT.
PL-52042			
1	00-475201-00001	Door Lift Weldment (SST) .....	1
2	00-079008	Hanger – Spring .....	1
3	00-119055	Button – Bearing .....	2
4	00-119079-00001	Spring – Counterbalanced .....	1
5	NS-015-11	Nut <sup>5</sup> / <sub>16</sub> -18 Hex .....	4
6	WL-006-23	Lockwasher <sup>5</sup> / <sub>16</sub> Medium (SST) .....	4
7	SC-053-16	Mach. Screw <sup>5</sup> / <sub>16</sub> -18 x <sup>5</sup> / <sub>8</sub> Truss Hd. ....	4
8	00-473432	Gasket – Door Lift .....	2
9	00-473372	Bracket – Bearing & Pin Assy. ....	2
10	00-473373	Bushing – Door Lift Pin .....	2
11	00-074068	Spacer – Door Link .....	2
12	NS-032-35	Stop Nut <sup>5</sup> / <sub>16</sub> -18 Flexloc .....	2
13	00-119046	Pin – Door Lift .....	2
14	00-473363	Link – Door .....	2
15	00-474831	Plug – Handle .....	2
16	WL-006-22	Lockwasher <sup>5</sup> / <sub>16</sub> Light (SST) .....	2
17	NS-025-09	Nut <sup>5</sup> / <sub>16</sub> -18 Crown .....	2
18	WS-005-32	Washer .....	2
19	00-186334-00002	Hook – Spring .....	1
20	NS-015-11	Nut <sup>5</sup> / <sub>16</sub> -18 Hex .....	2
	00-329997	Kit – Door Lift (Incls. Items 2 thru 5 & 19) .....	1



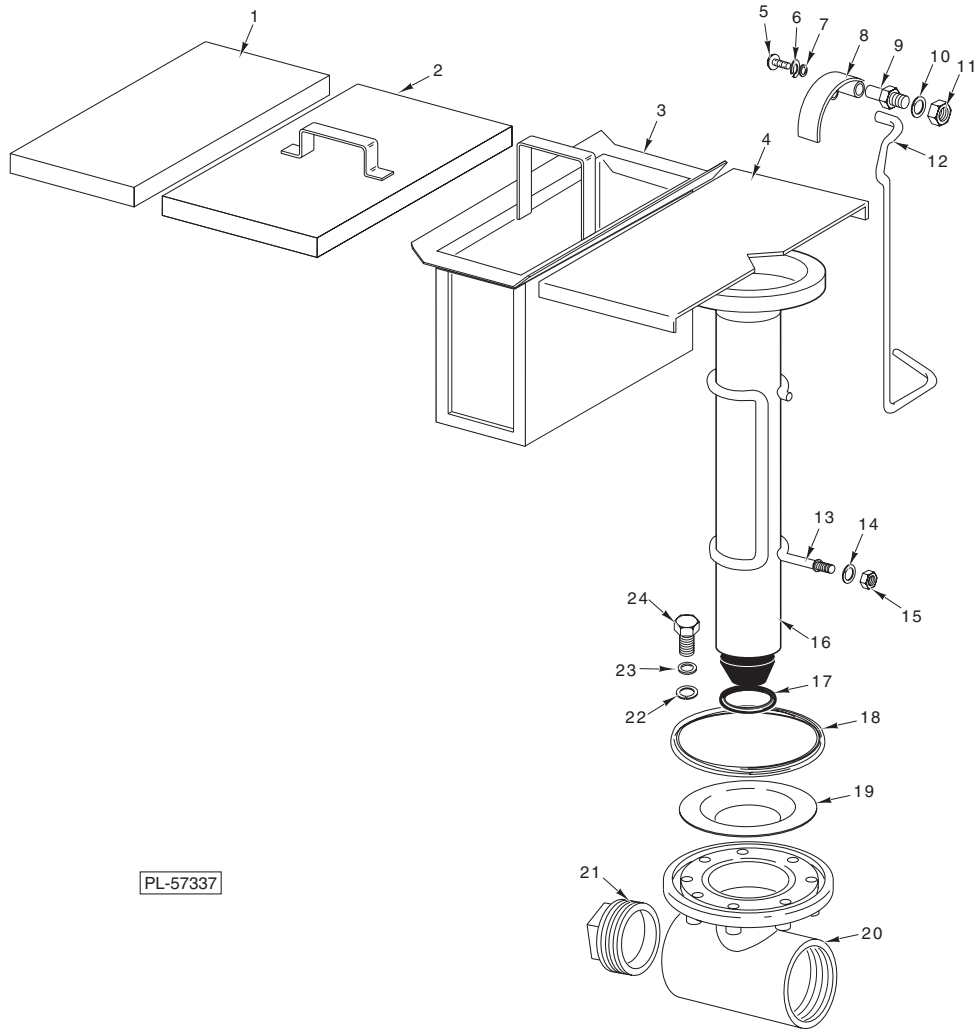
**DOOR LIFT  
(CORNER)**

ILLUS.	PART NO.	NAME OF PART	AMT.
PL-52044			
1	PC-005-11	Cotter Pin <sup>3</sup> / <sub>32</sub> .....	AR
2	WS-017-08	Washer .....	1
3	00-473356	Hook – Spring (Upper) .....	1
4	NS-032-35	Stop Nut <sup>5</sup> / <sub>16</sub> -18 Flexloc .....	2
5	00-473431	Spacer – Door Link .....	2
6	00-473357	Link – Door Lift .....	2
7	00-119076	Plug – Handle .....	2
8	WL-006-23	Lockwasher <sup>5</sup> / <sub>16</sub> Medium .....	2
9	NS-025-09	Nut <sup>5</sup> / <sub>16</sub> -18 Crown .....	2
10	WS-005-32	Washer .....	2
11	00-119046	Pin – Door Lift .....	2
12	NS-015-11	Nut <sup>5</sup> / <sub>16</sub> -18 Hex .....	2
13	00-473359-00002	Hook – Spring (Lower) .....	1
14	00-119079-00002	Spring – Counterbalance .....	1
15	SC-053-16	Mach. Screw <sup>5</sup> / <sub>16</sub> -18 x <sup>5</sup> / <sub>8</sub> Truss Hd. ....	8
16	00-474384	Spacer .....	2
17	00-119272	Pivot Assy. ....	2
18	WS-017-08	Washer .....	8
19	WL-006-23	Lockwasher <sup>5</sup> / <sub>16</sub> Medium (SST) .....	8
20	NS-015-11	Nut <sup>5</sup> / <sub>16</sub> -18 Hex .....	8
21	WS-010-42	Washer .....	6
22	00-074532	Bushing .....	2
23	00-475202	Door Lift Weldment .....	1



**INSIDE RINSE PIPING**

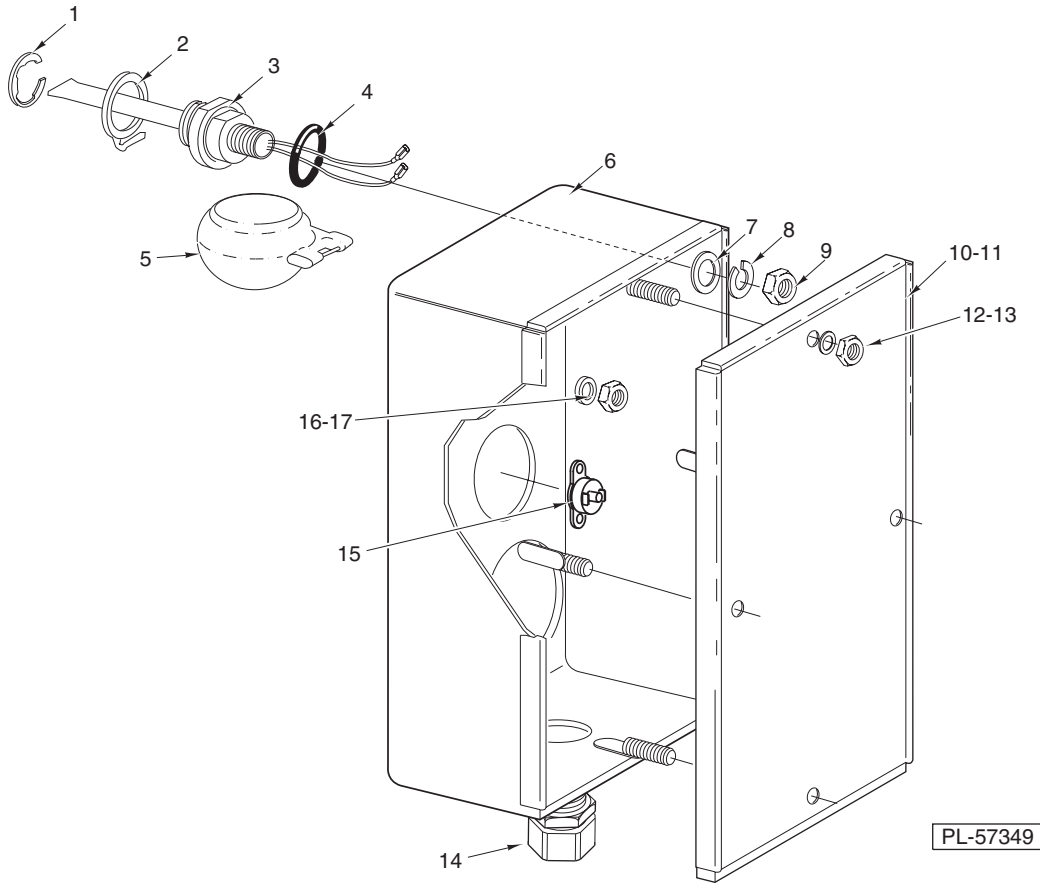
ILLUS.	PART NO.	NAME OF PART	AMT.
1	00-276407	Gasket – Rinse Pipe .....	1
2	00-289086	Fill Tube Assy. ....	1
3	00-067500-00009	O-Ring .....	3
4	SC-041-10	Cap Screw <sup>5</sup> / <sub>16</sub> -18 x <sup>5</sup> / <sub>8</sub> Hex Hd. ....	4
5	WL-006-23	Lockwasher <sup>5</sup> / <sub>16</sub> Medium (SST) .....	4
6	00-473381	Rinse Connector & Flange Assy. ....	1
7	SC-041-09	Cap Screw <sup>5</sup> / <sub>16</sub> -18 x 1/2 Hex Hd. ....	2
8	WL-006-23	Lockwasher <sup>5</sup> / <sub>16</sub> Medium (SST) .....	2



PL-57337

**STRAINER AND DRAIN**

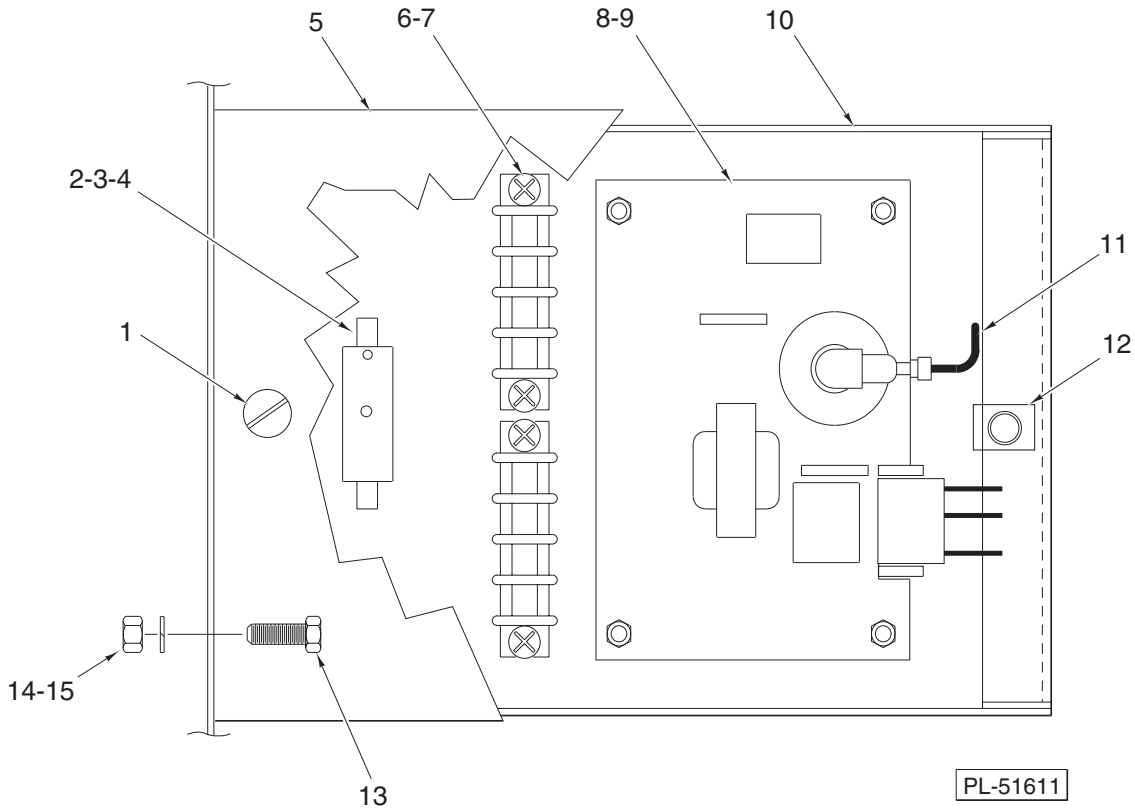
ILLUS.	PART NO.	NAME OF PART	AMT.
1	00-289112	Cover – Sump .....	1
2	00-118967	Strainer – Slanted .....	1
3	00-118999	Strainer Basket Assy. ....	1
4	00-289111	Cover – Overflow .....	1
5	SC-021-22	Mach. Screw 10-24 x 3/8 Rd. Hd. (SST) .....	1
6	WL-006-07	Lockwasher #10 Medium .....	1
7	WS-023-34	Washer .....	1
8	00-119121	Drain Lever Assy. ....	1
9	00-119116	Axle – Drain Lever .....	1
10	WL-006-17	Lockwasher 1/4 Medium .....	1
11	NS-015-01	Nut 1/4-20 Hex (SST) .....	1
12	00-119119	Rod – Overflow Lift .....	1
13	00-277025	Guide .....	1
14	WL-006-17	Lockwasher 1/4 Medium .....	2
15	NS-047-82	Stop Nut – Special 1/4-20 Hex (SST) .....	2
16	00-119099-00002	Tube – Overflow .....	1
17	00-067500-00120	O-Ring (Overflow Tube) .....	1
18	00-067500-00082	O-Ring .....	1
19	00-119239	Sleeve .....	1
20	00-118976	Body – Drain Valve .....	1
21	FP-028-32	Pipe Plug 2 In. Sq. Hd. ....	1
22	WS-017-08	Washer .....	8
23	WL-006-23	Lockwasher 5/16 Medium (SST) .....	8
24	SC-041-11	Cap Screw 5/16-18 x 3/4 Hex Hd. (SST) .....	8



**LOW WATER PROTECTION & HEAT BOX  
(STEAM & ELECTRIC HEAT)**

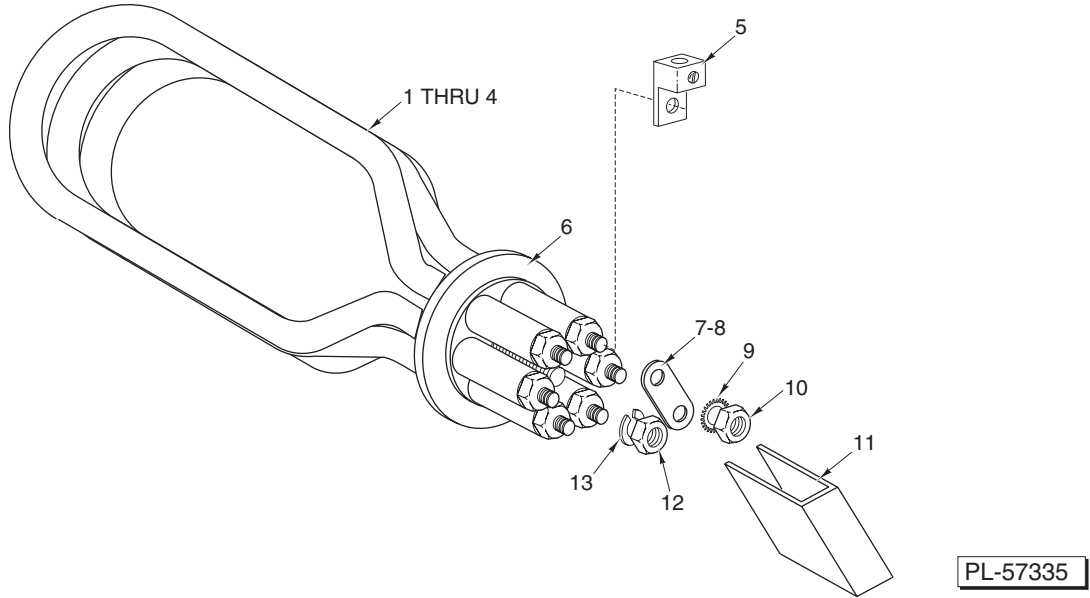
ILLUS.	PART NO.	NAME OF PART	AMT.
	PL-57349		
1	RR-010-13	Retaining Ring .....	1
2	00-112467	Retainer - Float .....	1
3	00-271621	Probe & Switch Assy. (4 Wire) (Temperatures & Water Level) .....	1
4	00-067500-00072	O-Ring .....	1
5	00-122674	Float Assy. ....	1
6	00-474567-00001	Heat Box .....	1
7	WS-010-40	Washer - Thrust .....	1
8	WL-014-31	Lockwasher 1/2 External Shakeproof (SST) .....	1
9	NS-018-28	Jam Nut 1/2-20 Hex .....	1
10	00-474574-00002	Lid Assy. - Heat Box (Steam/Electric) .....	1
11	00-474569	Gasket - Heat Box .....	1
12	NS-011-18	Mach. Nut 10-24 Hex (SST) .....	4
13	WL-014-07	Lockwasher #10 External Shakeproof (SST) .....	4
14	FE-022-84	Connector - Strain Relief .....	1
15	00-294618	Temperature Control Kit (Incls. Spacers & Nuts) (Use with Electric Heat) .....	1
16	NS-015-01	Nut 1/4-20 Hex (SST) .....	4
17	WL-006-17	Lockwasher 1/4 Medium .....	4
	00-289121	Kit - Low Water Protection (Incls. Items 1 thru 5) .....	1
	00-119244	Cap & Stud Assy. ....	1
	00-119254	Retainer - Cap & Stud .....	1
	00-067500-00031	O-Ring .....	1
	FE-024-88	Lock Nut 1/2 .....	1





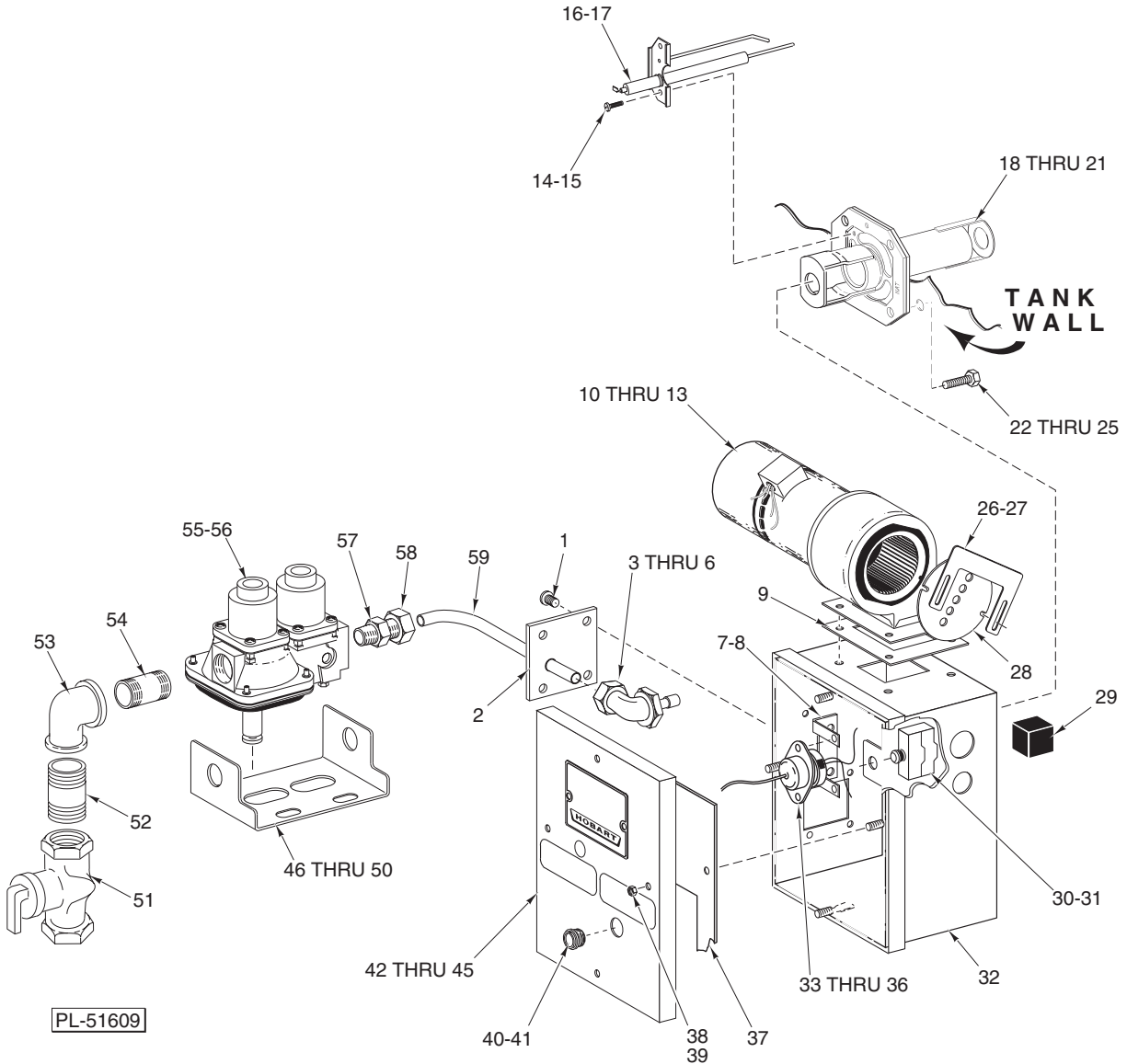
**GAS HEAT CONTROL BOX**

ILLUS. PL-51611	PART NO.	NAME OF PART	AMT.
1	SC-053-02	Mach. Screw 10-24 x 1/2 Truss Hd. (SST)	2
2	00-294436-00003	Block - Fuse	1
3	FE-021-19	Fuse (250 V., 3.2 Amp.)	1
4	SD-008-17	Self-Tapping Screw 6-20 x 3/8 Phil. Bndg. Hd., Type B	1
5	00-473501	Cover - Gas Heat Box	1
6	00-294325-014-1	Terminal Block	2
7	SC-021-15	Mach. Screw 8-32 x 1/2 Rd. Hd., Slotted	4
8	00-436853	Ignitor Board (24 VAC)	1
9	NS-031-50	Stop Nut 6-32 Hex (SST)	4
10	00-892110	Gas Heat Box	1
11	00-271146-00002	Cable - High Voltage	1
12	00-074348	Speed Nut 10-24	2
13	SC-041-10	Cap Screw 5/16-18 x 3/8 Hex Hd.	2
14	WL-006-23	Lockwasher 5/16 Medium (SST)	2
15	NS-015-11	Nut 5/16-18 Hex	2
	00-435538	Wire Harness - Ignitor Board	1



**ELECTRIC HEAT**

ILLUS.	PART NO.	NAME OF PART	AMT.
PL-57335			
1	00-119078-00007	Heater – Electric (208-240 V., 60 Hz., 3 Ph.) (200-240V., 50 Hz., 3 Ph.)	1
2	00-119078-00008	Heater – Electric (380-415 V., 50 Hz., 3 Ph.)	1
3	00-119078-00009	Heater – Electric (480 V., 60 Hz., 3 Ph.)	1
4	00-119078-00006	Heater – Electric (100-120 V., 50 Hz., 1 Ph.) (120 V., 60 Hz., 1 Ph.)	1
5	00-118544-00001	Lug – Solderless	1
6	00-119276	Gasket (Heater)	1
7	00-288543-00002	Jumper – Short	1
8	00-288543-00001	Jumper – Long	1
9	WL-006-17	Lockwasher 1/4 Medium	AR
10	NS-015-01	Nut 1/4-20 Hex (SST)	AR
11	00-086444	Insulator – Terminal (Above 250 V.)	1
12	NS-015-13	Nut 3/8-16 Hex (SST)	1
13	WL-006-27	Lockwasher 3/8 Light	1

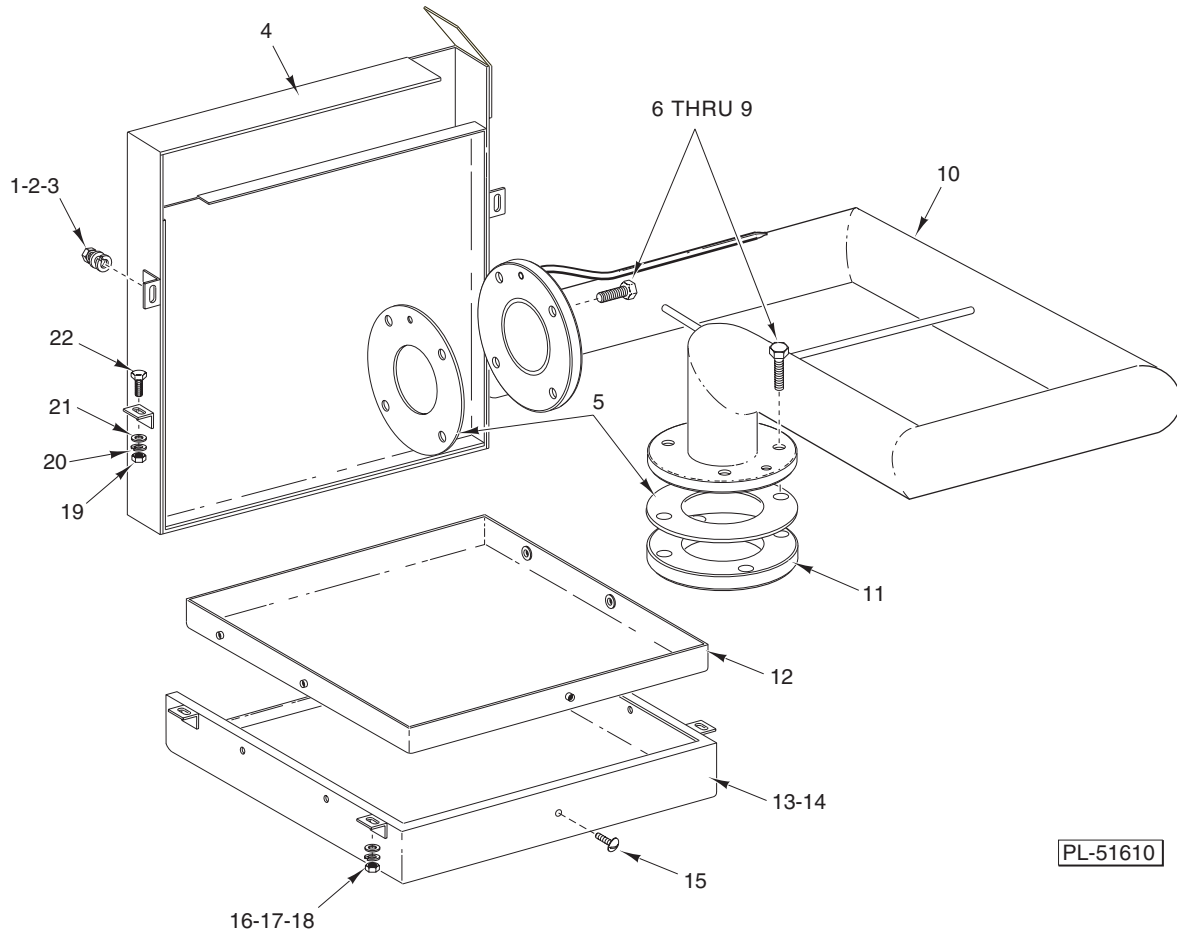


**GAS HEAT COMPONENTS  
(CURRENT CONSTRUCTION)**

ILLUS.	PART NO.	NAME OF PART	AMT.
PL-51609			
1	SC-053-05	Mach. Screw 10-24 x 3/8 Truss Hd., Slotted	4
2	00-328440	Plate - Gas Line	1
3	00-435701-00002	Angle Fitting - LP Gas #43 Drill (0.089), 7/16 (NAT 60 Hz.)	1
4	00-435701-00002	Angle Fitting - LP Gas #43 Drill (0.089), 7/16 (NAT 50 Hz.) (ML-110412 & ML-110414)	1
5	00-435701-00006	Angle Fitting 7/16 (PRO, 60 Hz.)	1
6	00-435701-00005	Angle Fitting 7/16 (PRO, 50 Hz.) (ML-110412 & ML-110414)	1
7	00-271122-00002	Bracket - Thermostat	1
8	SC-053-05	Mach. Screw 10-24 x 3/8 Truss Hd., Slotted	2
9	00-328473	Gasket - Blower	1
10	00-328476-00001	Blower - Motor & Switch	1

## GAS HEAT COMPONENTS (CURRENT CONSTRUCTION)

ILLUS. PL-51609	PART NO.	NAME OF PART	AMT.
11	SC-041-05	Cap Screw 1/4-20 x 5/8 Hex Hd. ....	4
12	WL-014-10	Lockwasher 1/4 External Shakeproof .....	1
13	NS-031-21	Stop Nut – Special 1/4-20 Hex .....	4
14	SC-093-03	Mach. Screw 8-32 x 3/8 Phil. Pan Hd. (SST) .....	2
15	WL-014-05	Lockwasher #8 External Shakeproof .....	2
16	00-436792	Electrode – Spark/Sense (NAT) .....	1
17	00-436067	Electrode – Spark/Sense (PRO) .....	1
18	00-328649	Burner – Weldment (NAT, 60 Hz.) .....	1
19	00-473518	Burner – Weldment (NAT, 50 Hz.) (ML-110412 & ML-110414) .....	1
20	00-436761	Burner – Weldment (PRO, 60 Hz.) .....	1
21	00-473516	Burner – Weldment (PRO, 50 Hz.) (ML-110412 & ML-110414) .....	1
22	SC-121-43	Cap Screw 7/16-14 x 1 3/4 Hex Hd. ....	4
23	WS-021-07	Washer .....	8
24	WL-019-77	Lockwasher 7/16 Medium .....	4
25	NS-047-97	Nut 7/16-14 Hex .....	4
26	00-328428	Plate – Adjusting .....	1
27	SD-012-20	Self-Tapping Screw 8-32 x 1/2 Phil. Truss Hd., Type T .....	2
28	00-473505	Plate – Restrictor .....	1
29	00-328450	Plug – Rubber (Conduit) .....	4
30	00-087711-153-1	Switch – Limit .....	1
31	00-328508	Insulator – Switch .....	1
32	00-328465-00002	Box – Heat (LH) .....	1
33	00-271123	Protector – High Limit .....	1
34	SC-021-08	Mach. Screw 6-32 x 3/8 Rd. Hd. (SST) .....	2
35	NS-031-50	Stop Nut 6-32 Hex (SST) .....	2
36	00-293946	Sleeve – Lead .....	1
37	00-328429	Gasket – Heat Box Lid .....	1
38	WS-019-06	Washer .....	4
39	NS-031-16	Stop Nut 10-24 Hex Elastic (SST) .....	4
40	00-435024	Eye – Box (Gas Heat) .....	1
41	NS-035-25	Lock Nut 3/4-16 Palnut .....	1
42	00-473531-00001	Lid Assy. – Heat Box (NAT, 60 Hz.) .....	1
43	00-473531-00002	Lid Assy. – Heat Box (NAT, 50 Hz.) (ML-110412 & ML-110414) .....	1
44	00-473531-00003	Lid Assy. – Heat Box (PRO, 60 Hz.) .....	1
45	00-473531-00004	Lid Assy. – Heat Box (PRO, 50 Hz.) (ML-110412 & ML-110414) .....	1
46	00-473482	Bracket – Gas Valve Mounting .....	1
47	SC-041-10	Cap Screw 5/16-18 x 5/8 Hex Hd. ....	2
48	WS-017-08	Washer .....	2
49	WL-006-23	Lockwasher 5/16 Medium (SST) .....	2
50	NS-015-11	Nut 5/16-18 Hex .....	2
51	00-291988-00003	Valve – Gas Cock .....	1
52	FP-059-61	Pipe 1/2 x 1 1/4 Lg. TBE .....	1
53	FP-013-15	Elbow – Pipe 1/2 x 90 Deg. ....	1
54	FP-035-94	Pipe 1/2 x 1 1/2 Lg. TBE .....	1
55	00-473481-00001	Valve – Regulator (NAT Gas) .....	1
56	00-473481-00002	Valve – Regulator (PRO Gas) .....	1
57	FP-026-14	Bushing – 1/2 to 3/8 .....	1
58	00-435702	Connector – Male 7/16 .....	1
59	00-328425-00003	Tube – Gas .....	1
	00-294357-00001	Housing – Connector (NAT) .....	1
	00-294357-00002	Housing – Connector (Black) .....	1
	00-293940	Gas Electrode Kit .....	1
	00-328598	Kit – Hi-Limit Protector (Incls. Item 33) .....	1
	00-526454-00002	Tape – Foam .....	AR

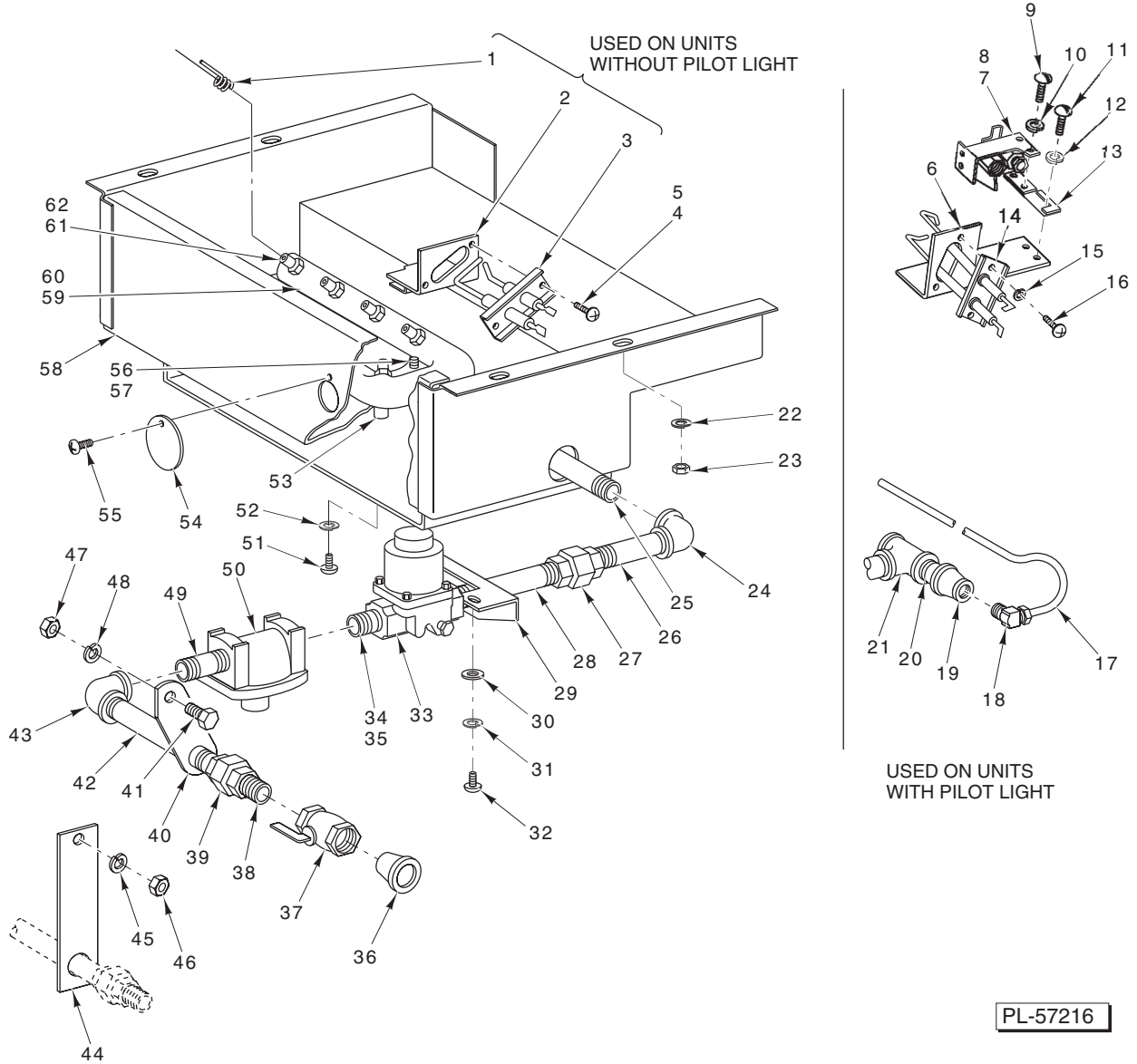


PL-51610

**GAS HEAT IMMERSION TUBE  
SHROUD AND FLUE**

**GAS HEAT IMMERSION TUBE  
SHROUD AND FLUE**

ILLUS.	PART NO.	NAME OF PART	AMT.
PL-51610			
1	WS-017-06	Washer .....	2
2	WL-006-17	Lockwasher 1/4 Medium .....	2
3	NS-015-01	Nut 1/4-20 Hex (SST) .....	2
4	00-473494	Flue – Weldment .....	1
5	00-436100	Gasket – Immersion Tube .....	2
6	SC-121-43	Cap Screw 7/16-14 x 1 3/4 Hex Hd. ....	8
7	WS-021-07	Washer .....	16
8	WL-019-77	Lockwasher 7/16 Medium .....	8
9	NS-047-97	Nut 7/16-14 Hex .....	8
10	00-473123	Tube – Immersion .....	1
11	00-435952	Flange – Immersion Tube .....	1
12	00-473487-00001	Liner – Shroud .....	1
13	00-473485-00001	Shroud – Weldment .....	1
14	00-473488	Insulation – Shroud .....	1
15	SC-053-02	Mach. Screw 10-24 x 1/2 Truss Hd. (SST) .....	5
16	WS-017-06	Washer .....	4
17	WL-006-17	Lockwasher 1/4 Medium .....	4
18	NS-015-01	Nut 1/4-20 Hex (SST) .....	4
19	NS-015-11	Nut 5/16-18 Hex .....	2
20	WL-006-23	Lockwasher 5/16 Medium (SST) .....	2
21	WS-017-08	Washer .....	2
22	SC-041-10	Cap Screw 5/16-18 x 5/8 Hex Hd. ....	2
	00-474152	Shroud Assy. (Incls. Items 12 thru 15) .....	1



**GAS BURNER  
(PREVIOUS CONSTRUCTION)**

ILLUS.	PART NO.	NAME OF PART	AMT.
PL-57216			
1	00-293037	Electrode – Grounding.....	8
2	00-293038	Support – Electrode.....	1
3	00-293039	Electrode Assy. ....	1
4	SC-021-91	Mach. Screw 8-32 x 5/16 Rd. Hd. ....	2
5	WL-006-01	Lockwasher #8 Light.....	2
6	*	Support – Pilot.....	1
7	00-105045-00001	Pilot (NAT or Mixed Gas).....	1
8	00-105045-00002	Pilot (LP Gas).....	1

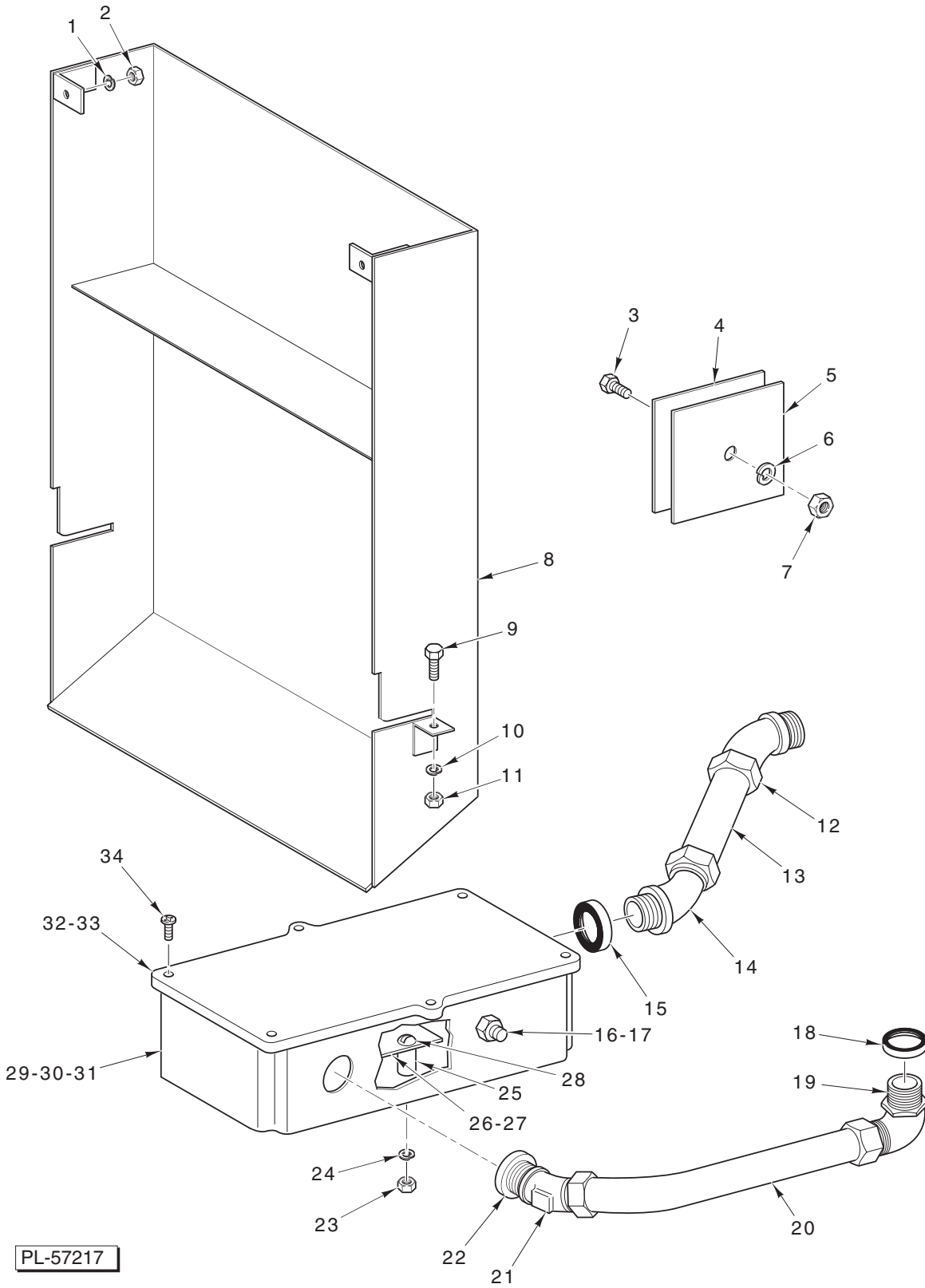
**GAS BURNER  
(PREVIOUS CONSTRUCTION)**

ILLUS. PL-57216	PART NO.	NAME OF PART	AMT.
9	SC-021-80	Mach. Screw 10-32 x 3/8 Rd. Hd.....	2
10	WL-006-07	Lockwasher #10 Medium .....	2
11	SC-021-80	Mach. Screw 10-32 x 3/8 Rd. Hd.....	2
12	WL-006-07	Lockwasher #10 Medium .....	2
13	*	Bracket – Pilot Support .....	1
14	*	Electrode Assy. ....	1
15	WL-006-01	Lockwasher #8 Light.....	2
16	SC-021-91	Mach. Screw 8-32 x 5/16 Rd. Hd. ....	2
17	00-023963-00011	Tube 1/4 In. O.D. (Gas) .....	1
18	FP-012-21	Elbow 90 Deg. (1/8 Male Pipe x 1/4 Tube) .....	1
19	FP-024-45	Coupling – 3/8 to 1/8 Reducing .....	1
20	FP-035-46	Pipe 3/8 x 1 Lg. TBE .....	1
21	FP-019-10	Tee 3/8 .....	1
22	WL-006-17	Lockwasher 1/4 Medium .....	4
23	NS-015-01	Nut 1/4-20 Hex Fin. ....	4
24	FP-013-11	Elbow 3/8 x 90 Deg. ....	1
25	FP-035-63	Pipe 3/8 x 4 1/2 Lg. TBE .....	1
26	FP-035-60	Pipe 3/8 x 3 1/4 Lg. TBE .....	1
27	FP-022-06	Union 3/8 .....	1
28	FP-035-61	Pipe 3/8 x 3 1/2 Lg. TBE .....	1
29	00-277809	Bracket – Control Box Mounting .....	2
30	WS-019-06	Washer .....	4
31	WL-006-06	Lockwasher #10 Light.....	4
32	SC-021-22	Mach. Screw 10-24 x 3/8 Rd. Hd.....	4
33	00-288967	Gauge – Gas Valve Assy. (115 V., 60 Hz.).....	1
34	FP-035-46	Pipe 3/8 x 1 Lg. TBE (NAT or Mixed Gas) .....	1
35	FP-035-62	Pipe 3/8 x 4 1/8 Lg. TBE (LP Gas) .....	1
36	00-119298	Plug – Pipe .....	1
37	00-291988-00002	Valve, Gas Cock 3/8 (Lever Handle) .....	1
38	FP-035-46	Pipe 3/8 x 1 Lg. TBE .....	1
39	FP-022-06	Union 3/8 .....	1
**40	00-119278	Support – Pipe .....	1
**41	SC-041-10	Cap Screw 5/16-18 x 5/8 Hex Hd. ....	1
42	FP-035-65	Pipe 3/8 x 5 1/8 Lg. TBE .....	1
43	FP-013-11	Elbow 3/8 x 90 Deg. ....	1
***44	00-119301	Bracket – Pipe Support .....	1
***45	WL-006-17	Lockwasher 1/4 Medium .....	1
***46	NS-015-01	Nut 1/4-20 Hex Fin. ....	1
**47	NS-015-11	Nut 5/16-18 Hex Fin. ....	1
**48	WL-006-23	Lockwasher 5/16 Medium .....	1
49	FP-035-49	Pipe 3/8 x 1 1/2 Lg. TBE (NAT or Mixed Gas).....	1
50	00-435400	Regulator – Pressure (NAT or Mixed Gas) (Service Kit) .....	1
51	SC-021-44	Mach. Screw 1/4-20 x 1 1/2 Rd. Hd. ....	1
52	WL-006-17	Lockwasher 1/4 Medium .....	1
53	00-119151	Spacer – Burner .....	1
54	00-119171	Cover – Pilot Hole .....	1
55	SD-008-18	Self-Tapping Screw 8 x 3/8 Phil. Bndg. Hd., Type B.....	1
56	SC-021-23	Mach. Screw 10-24 x 1/2 Rd. Hd.....	2
57	WL-006-07	Lockwasher #10 Medium .....	2
58	00-119146	Burner Housing Assy. ....	1
59	00-105172-00001	Gas Burner Assy. (NAT or Mixed Gas) (Incls. Item 61) .....	1
60	00-105172-00002	Gas Burner Assy. (LP Gas) (Incls. Item 62).....	1
61	00-105763-00001	Jet – Gas Burner (NAT or Mixed Gas) .....	8
62	00-105763-00004	Jet – Gas Burner (LP Gas) .....	8
	00-120419-00001	Coil – Solenoid Valve (Pen Control Valve).....	1
	00-288967	Gauge – Gas Valve Assy. ....	1

\* Not available, Order Gas Electrode Kit 293940

\*\* RH Controls

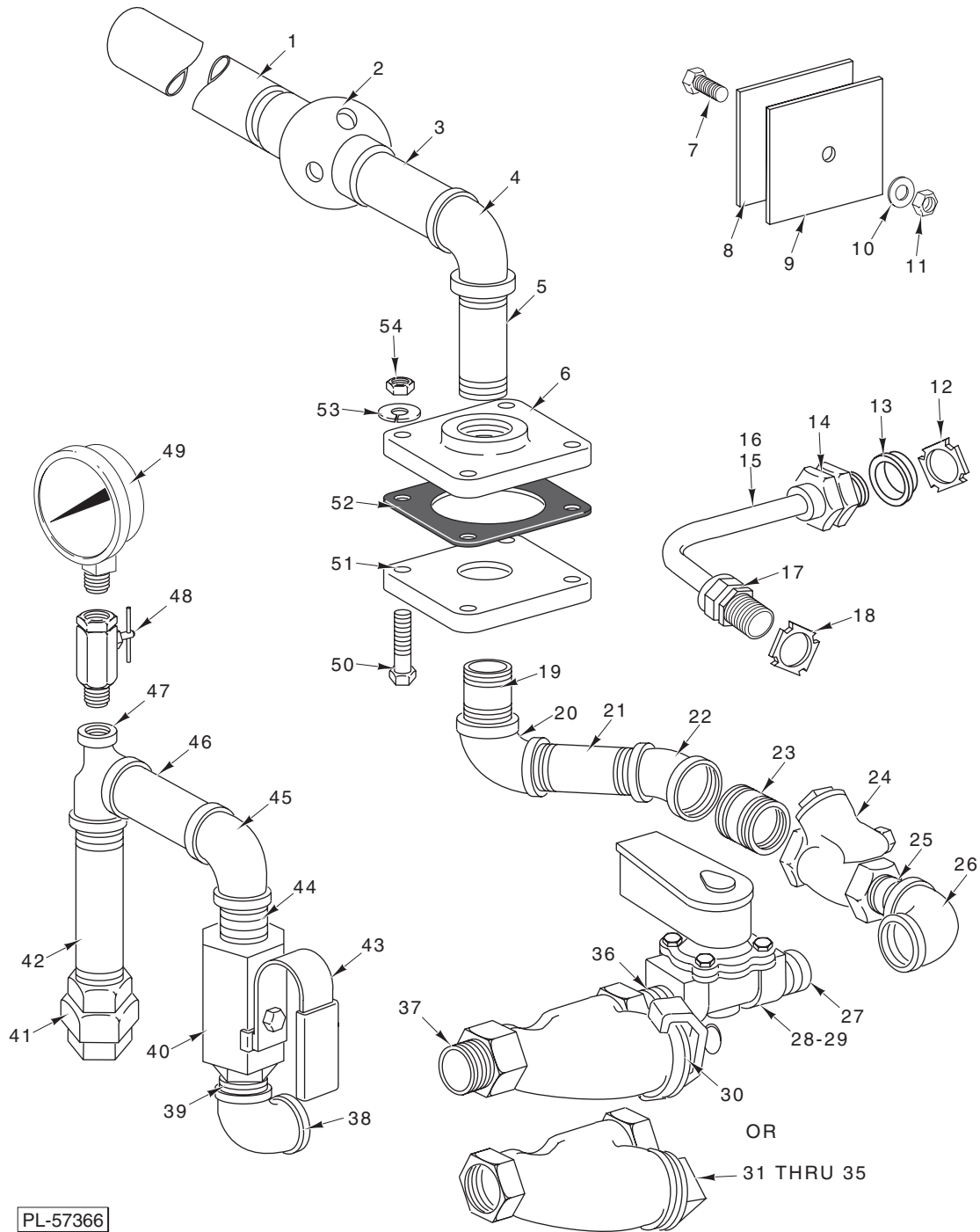
\*\*\*LH Controls



**FLUE AND IGNITER CONTROL (GAS HEAT)  
(PREVIOUS CONSTRUCTION)**

**FLUE AND IGNITER CONTROL (GAS HEAT)  
(PREVIOUS CONSTRUCTION)**

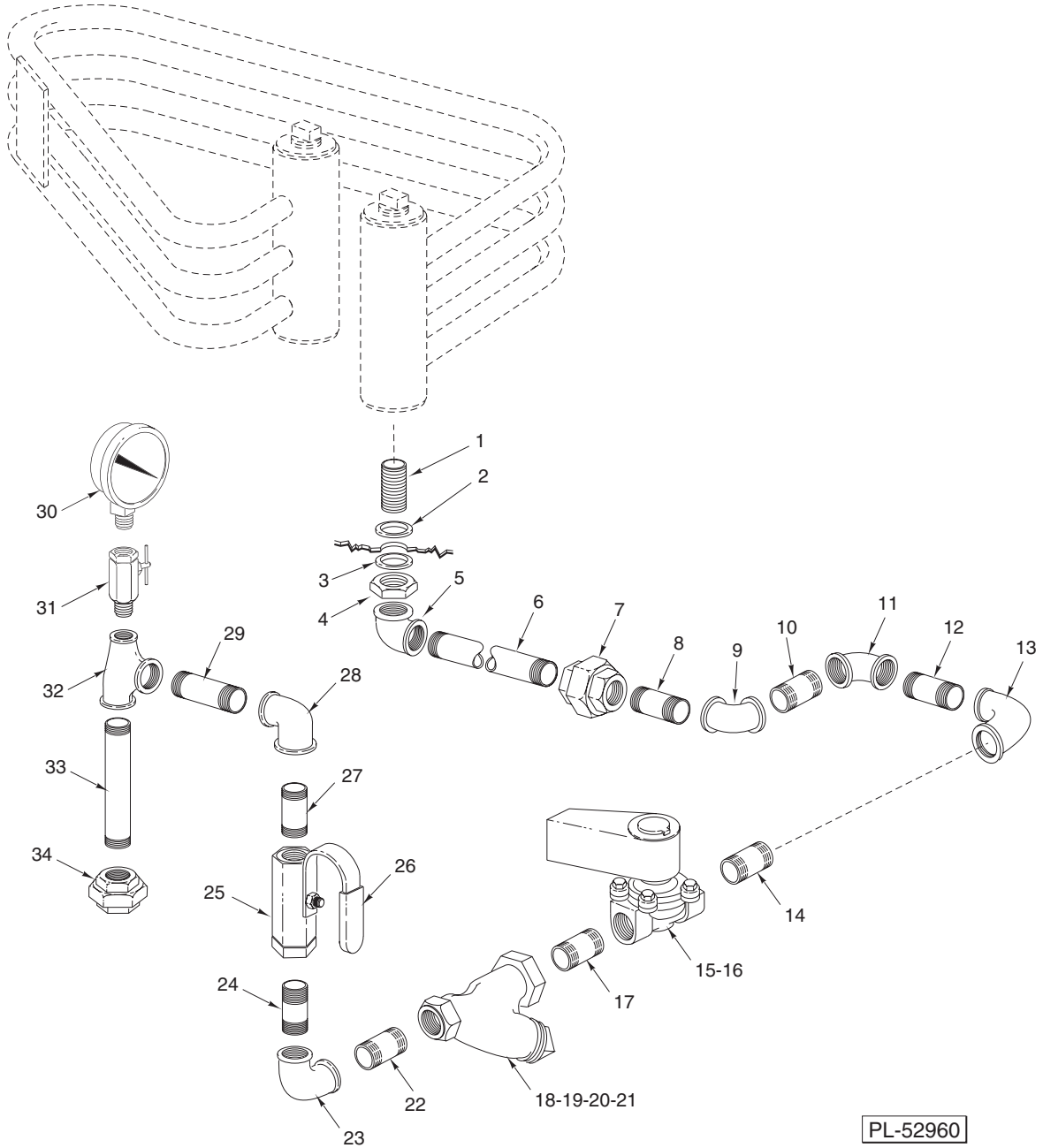
ILLUS. PL-57217	PART NO.	NAME OF PART	AMT.
1	WL-006-22	Lockwasher <sup>5</sup> / <sub>16</sub> Light .....	2
2	NS-015-11	Nut <sup>5</sup> / <sub>16</sub> -18 Hex Fin. ....	2
3	SC-041-28	Cap Screw <sup>3</sup> / <sub>8</sub> -16 x <sup>3</sup> / <sub>4</sub> Hex Hd. ....	1
4	00-119152	Gasket – Cover Plate .....	1
5	00-119153	Plate – Electric Heater Cover .....	1
6	WL-006-27	Lockwasher <sup>3</sup> / <sub>8</sub> Light .....	1
7	NS-015-13	Nut <sup>3</sup> / <sub>8</sub> -16 Hex Fin. ....	1
8	00-119090	Flue Assy. ....	1
9	SC-041-11	Cap Screw <sup>5</sup> / <sub>16</sub> -18 x <sup>3</sup> / <sub>4</sub> Hex Hd. ....	2
10	WL-006-23	Lockwasher <sup>5</sup> / <sub>16</sub> Medium .....	2
11	NS-015-11	Nut <sup>5</sup> / <sub>16</sub> -18 Hex Fin. ....	2
12	FE-024-62	Connector 45 Deg. ( <sup>3</sup> / <sub>4</sub> Male Thd. x <sup>3</sup> / <sub>4</sub> Thinwall) .....	1
13	00-072654-00013	Conduit <sup>3</sup> / <sub>4</sub> x 2 (Thinwall) .....	1
14	FE-008-44	Connector 45 Deg. ( <sup>3</sup> / <sub>4</sub> Male Thd. x <sup>3</sup> / <sub>4</sub> Thinwall) .....	1
15	FE-008-11	<sup>3</sup> / <sub>4</sub> Gasket Assy. ....	1
16	00-121040	Switch – Thermal .....	1
17	WL-008-27	Lockwasher <sup>3</sup> / <sub>8</sub> Internal Shakeproof .....	1
18	FE-008-10	<sup>1</sup> / <sub>2</sub> Gasket Assy. ....	1
19	FE-007-07	Connector 90 Deg. Sealtite ( <sup>1</sup> / <sub>2</sub> Male Thd. x <sup>1</sup> / <sub>2</sub> Flex. Cnd.) .....	1
20	00-077658-00045	Conduit <sup>1</sup> / <sub>2</sub> x 12 Lg. (Waterproof) .....	1
21	FE-007-05	Connector 45 Deg. Sealtite ( <sup>1</sup> / <sub>2</sub> Male Thd. x <sup>1</sup> / <sub>2</sub> Flex. Cnd.) .....	1
22	FE-008-10	<sup>1</sup> / <sub>2</sub> Gasket Assy. ....	1
23	NS-009-12	Mach. Nut 8-32 Hex .....	3
24	WL-003-12	Lockwasher #8 Medium .....	3
25	00-121027	Spacer – Control Board .....	3
26	00-892611	Gas Heat Igniter Circuit Assy. (Service Kit) .....	1
27	00-119282	Insulator (Igniter Circuit) .....	1
28	SC-007-49	Mach. Screw 8-32 x <sup>1</sup> / <sub>8</sub> Rd. Hd. ....	3
29	00-288469	Box – Control .....	1
30	FE-006-05	Lock Nut <sup>1</sup> / <sub>2</sub> Conduit .....	2
31	FE-006-51	Lock Nut <sup>3</sup> / <sub>4</sub> Conduit .....	2
32	00-289146-00002	Lid & Gasket Assy. (Incls. Item 33) .....	1
33	00-112005	Gasket (Lid) .....	1
34	SD-012-20	Self-Tapping Screw 8-32 x <sup>1</sup> / <sub>2</sub> Phil. Truss Hd., Type T .....	6



**STEAM INJECTOR  
(PREVIOUS CONSTRUCTION)**

**STEAM INJECTOR  
(PREVIOUS CONSTRUCTION)**

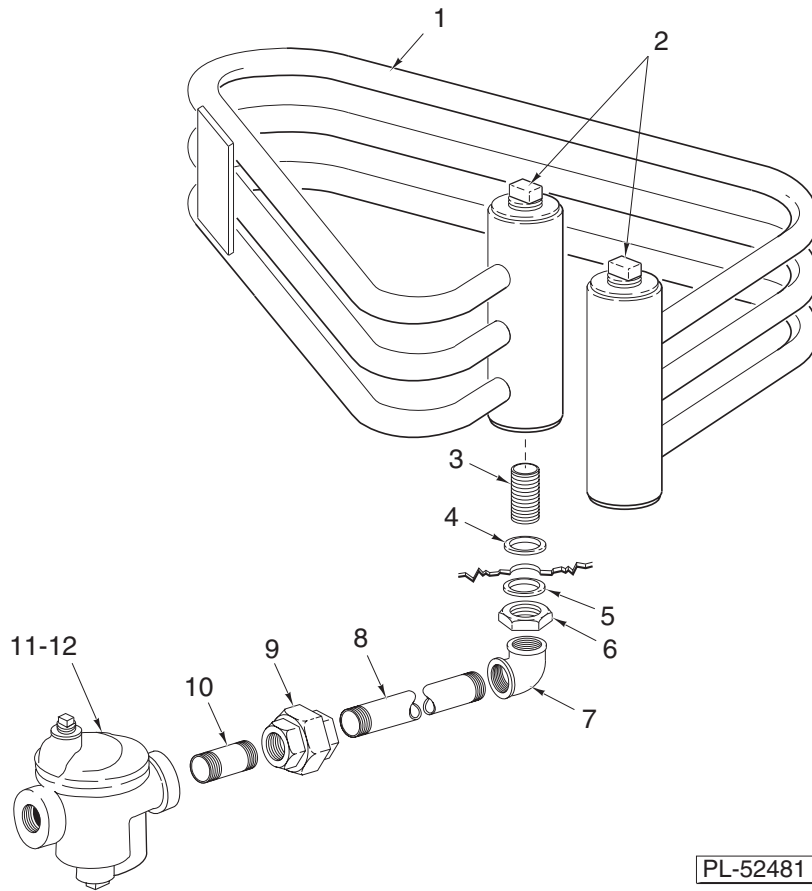
ILLUS. PL-57366	PART NO.	NAME OF PART	AMT.
1	FP-054-35	Pipe 1 x 10 Lg. (STOE).....	1
2	00-288671	Heater – Water .....	1
3	FP-054-44	Pipe 3/4 x 2 1/2 TBE (SST) .....	1
4	FP-049-15	Elbow 3/4 x 90 Deg. (SST) .....	1
5	FP-054-30	Pipe 3/4 x 3 Lg. TBE .....	1
6	00-067039-00002	Plate – Adapter .....	1
7	SC-041-28	Cap Screw 3/8-16 x 3/4 Hex Hd. ....	1
8	00-119152	Gasket – Cover Plate .....	1
9	00-119153	Plate – Cover .....	1
10	WL-006-27	Lockwasher 3/8 Light .....	1
11	NS-015-13	Nut 3/8-16 Hex (SST) .....	1
12	FE-006-05	Lock Nut 1/2 .....	1
13	FE-008-10	1/2 Gasket Assy. ....	1
14	FE-022-84	Connector – Strain Relief .....	1
15	00-294527	Cable Assy. (RH Controls) .....	1
16	00-294528	Cable Assy. (LH Controls) .....	1
17	FE-022-84	Connector – Strain Relief .....	1
18	FE-006-05	Lock Nut 1/2 .....	1
19	FP-036-92	Pipe 3/4 x 1 3/8 TBE .....	1
20	FP-013-22	Elbow 3/4 x 90 Deg. ....	1
21	FP-036-05	Pipe 3/4 x 3 TBE .....	1
22	FP-013-20	Elbow 3/4 x 45 Deg. ....	1
23	FP-036-92	Pipe 3/4 x 1 3/8 TBE .....	1
24	00-074696	Check Valve 3/4 .....	1
25	FP-036-92	Pipe 3/4 x 1 3/8 TBE .....	1
26	FP-013-22	Elbow 3/4 x 90 Deg. ....	1
27	FP-036-92	Pipe 3/4 x 1 3/8 TBE .....	1
28	00-270329-00003	Solenoid Valve 3/4 (Piston Valve; Gray Cover) (Incls. Item 29) .....	1
29	00-270318-00003	Coil – Solenoid Valve .....	1
30	00-082231	Screen – 3/4 In. Line Strainer .....	1
31	00-067500-00009	O-Ring .....	1
32	00-186922	Strainer – Line 3/4 In. (Brass) (Incls. Items 33, 34, & 35) .....	1
33	00-186925	Screen – (3/4 In. Line Strainer) .....	1
34	00-186924	Gasket (3/4 In. Line Strainer) .....	1
35	00-186923	Plug – Branch (3/4 In. Line Strainer) .....	1
36	FP-036-92	Pipe 3/4 x 1 3/8 TBE .....	1
37	FP-036-92	Pipe 3/4 x 1 3/8 TBE .....	1
38	FP-013-22	Elbow 3/4 x 90 Deg. ....	1
39	FP-036-92	Pipe 3/4 x 1 3/8 TBE .....	1
40	00-292385	Valve 3/4 Ball .....	1
41	FP-022-17	Union 3/4 (Grd. Seat) .....	1
42	FP-036-10	Pipe 3/4 x 4 3/4 Lg. TBE .....	1
43	00-289782-00003	Sleeve – Ball Valve Handle .....	1
44	FP-036-92	Pipe 3/4 x 1 3/8 TBE .....	1
45	FP-013-22	Elbow 3/4 x 90 Deg. ....	1
46	FP-036-06	Pipe 3/4 x 3 1/2 Lg. TBE .....	1
47	FP-019-79	Tee 3/4 x 1/4 x 3/4 Reducing .....	1
48	00-436319	Petcock 1/4 .....	1
49	00-328247	Gauge – Water Pressure .....	1
50	SC-041-17	Cap Screw 5/16-18 x 1 1/2 Hex Hd. (SST) .....	4
51	00-067039-00002	Plate – Adapter .....	1
52	00-067036	Gasket – Adapter Plate .....	1
53	WL-006-22	Lockwasher 5/16 Light .....	4
54	NS-018-06	Jam Nut 3/16-18 Hex .....	4
	00-270336	Service Kit – Solenoid Valve (Piston Valve; Gray Cover) .....	1
	00-082234	Plate – Seal (3/4 In. Line Strainer) (Zinc Plated) .....	1
	00-083376	Wire Tie .....	2



**STEAM COIL PIPING  
(PREVIOUS CONSTRUCTION)**

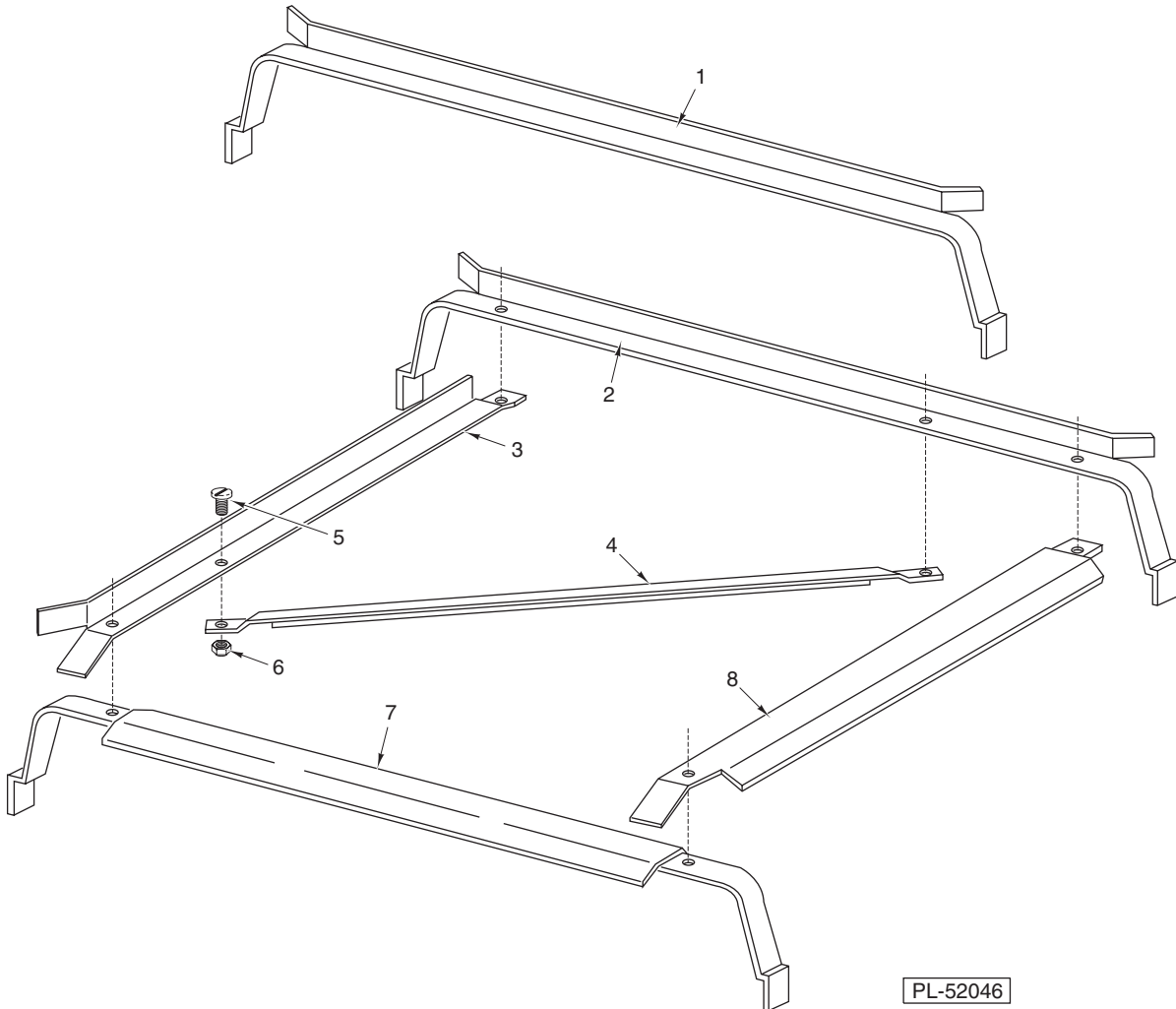
**STEAM COIL PIPING  
(PREVIOUS CONSTRUCTION)**

ILLUS. PL-52960	PART NO.	NAME OF PART	AMT.
1	FP-080-17	Pipe $\frac{3}{4}$ x 2 TBE ( $1\frac{1}{2}$ RTOE) (SST) .....	1
2	WS-013-45	Washer .....	1
3	WS-013-45	Washer .....	1
4	FP-053-09	Lock Nut $\frac{3}{4}$ NPSL (SST) .....	1
5	FP-013-22	Elbow $\frac{3}{4}$ x 90 Deg. ....	1
6	FP-036-92	Pipe $\frac{3}{4}$ x $1\frac{3}{8}$ TBE .....	1
7	FP-022-17	Union $\frac{3}{4}$ (Grd. Seat) .....	1
8	FP-059-14	Pipe $\frac{3}{4}$ x $4\frac{1}{2}$ TBE .....	1
9	FP-013-20	Elbow $\frac{3}{4}$ x 45 Deg. ....	1
10	FP-036-92	Pipe $\frac{3}{4}$ x $1\frac{3}{8}$ TBE .....	1
11	FP-013-20	Elbow $\frac{3}{4}$ x 45 Deg. ....	1
12	FP-036-87	Pipe $\frac{3}{4}$ x $4\frac{1}{4}$ TBE .....	1
13	FP-013-22	Elbow $\frac{3}{4}$ x 90 Deg. ....	1
14	FP-036-92	Pipe $\frac{3}{4}$ x $1\frac{3}{8}$ TBE .....	1
15	00-270329-00003	Solenoid Valve (Incls. Item 16) .....	1
16	00-270318-00003	Coil – Solenoid Valve .....	1
17	FP-036-92	Pipe $\frac{3}{4}$ x $1\frac{3}{8}$ TBE .....	1
18	00-186922	Strainer – Line $\frac{3}{4}$ In. Brass (Incls. Items 19, 20, & 21) .....	1
19	00-186923	Plug – Branch $\frac{3}{4}$ In. Line Strainer) .....	1
20	00-186924	Gasket ( $\frac{3}{4}$ In. Line Strainer) .....	1
21	00-186925	Screen ( $\frac{3}{4}$ In. Line Strainer) .....	1
22	FP-036-92	Pipe $\frac{3}{4}$ x $1\frac{3}{8}$ TBE .....	1
23	FP-013-22	Elbow $\frac{3}{4}$ x 90 Deg. ....	1
24	FP-036-92	Pipe $\frac{3}{4}$ x $1\frac{3}{8}$ TBE .....	1
25	00-292385	Valve $\frac{3}{4}$ Ball .....	1
26	00-289782-00003	Sleeve – Ball Valve Handle .....	1
27	FP-036-92	Pipe $\frac{3}{4}$ x $1\frac{3}{8}$ TBE .....	1
28	FP-013-22	Elbow $\frac{3}{4}$ x 90 Deg. ....	1
29	FP-036-06	Pipe $\frac{3}{4}$ x $3\frac{1}{2}$ Lg. TBE .....	1
30	00-328247	Gauge – Water Pressure .....	1
31	00-436319	Petcock $\frac{1}{4}$ .....	1
32	FP-019-79	Tee $\frac{3}{4}$ x $\frac{1}{4}$ x $\frac{3}{4}$ Reducing .....	1
33	FP-036-10	Pipe $\frac{3}{4}$ x $4\frac{3}{4}$ Lg. TBE .....	1
34	FP-022-17	Union $\frac{3}{4}$ (Grd. Seat) .....	1
	00-370336	Service Kit – Solenoid Valve (Piston Valve; Gray Cover) .....	1



**STEAM COILS  
(PREVIOUS CONSTRUCTION)**

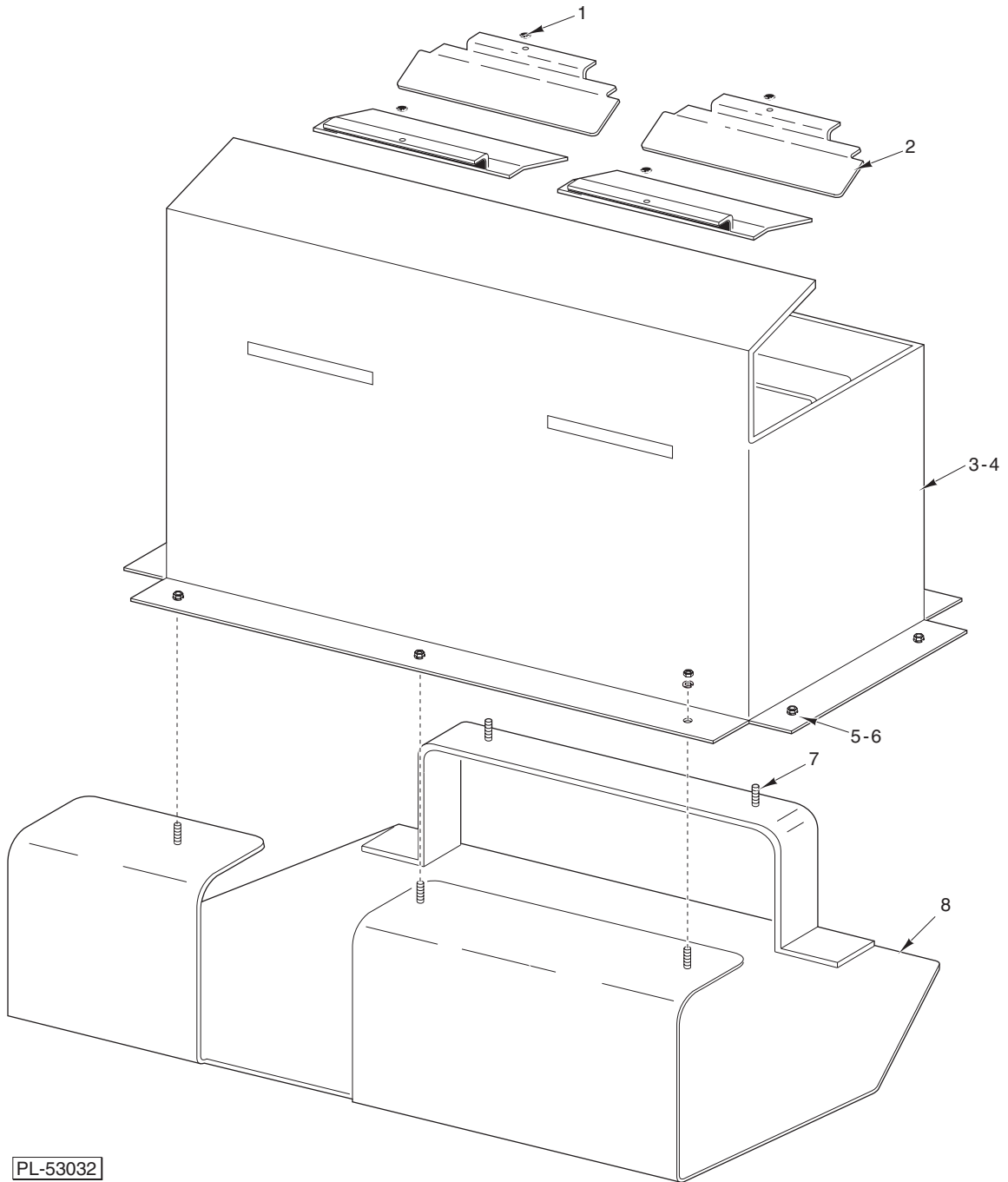
ILLUS.	PART NO.	NAME OF PART	AMT.
	<b>PL-52481</b>		
1	00-475013	Coil – Steam .....	1
2	FP-052-09	Pipe Plug $\frac{3}{4}$ Sq. Hd. (SST) .....	2
3	FP-080-17	Pipe $\frac{3}{4}$ x 2 TBE ( $1\frac{1}{2}$ RTOE) (SST) .....	1
4	WS-013-45	Washer .....	1
5	WS-013-45	Washer .....	1
6	FP-053-09	Lock Nut $\frac{3}{4}$ NPSL (SST) .....	1
7	FP-013-22	Elbow $\frac{3}{4}$ x 90 Deg. ....	1
8	FP-059-64	Pipe $\frac{3}{4}$ x $5\frac{1}{2}$ TBE .....	1
9	FP-022-17	Union $\frac{3}{4}$ (Grd. Seat) .....	1
10	FP-036-92	Pipe $\frac{3}{4}$ x $1\frac{3}{8}$ TBE .....	1
11	00-118316	Steam Trap (0-20 PSI) .....	1
12	00-118317	Steam Trap (21-50 PSI) .....	1



**TRACK UNIT**

ILLUS.	PART NO.	NAME OF PART	AMT.
PL-52046			
*1	00-119084	Track - Rack .....	2
**2	00-119080	Track - Rear Rack .....	1
**3	00-074527	Track - LH Rack .....	1
**4	00-119129	Support - Track .....	1
**5	SC-022-27	Mach. Screw 12-24 x <sup>5</sup> / <sub>8</sub> Flat Hd. ....	6
**6	NS-036-05	Stop Nut 12-24 Elastic .....	6
**7	00-119093-00001	Track - Front Rack .....	1
**8	00-074528	Track - RH Rack .....	1

\* Straight Thru Installation  
 \*\*Corner Installation

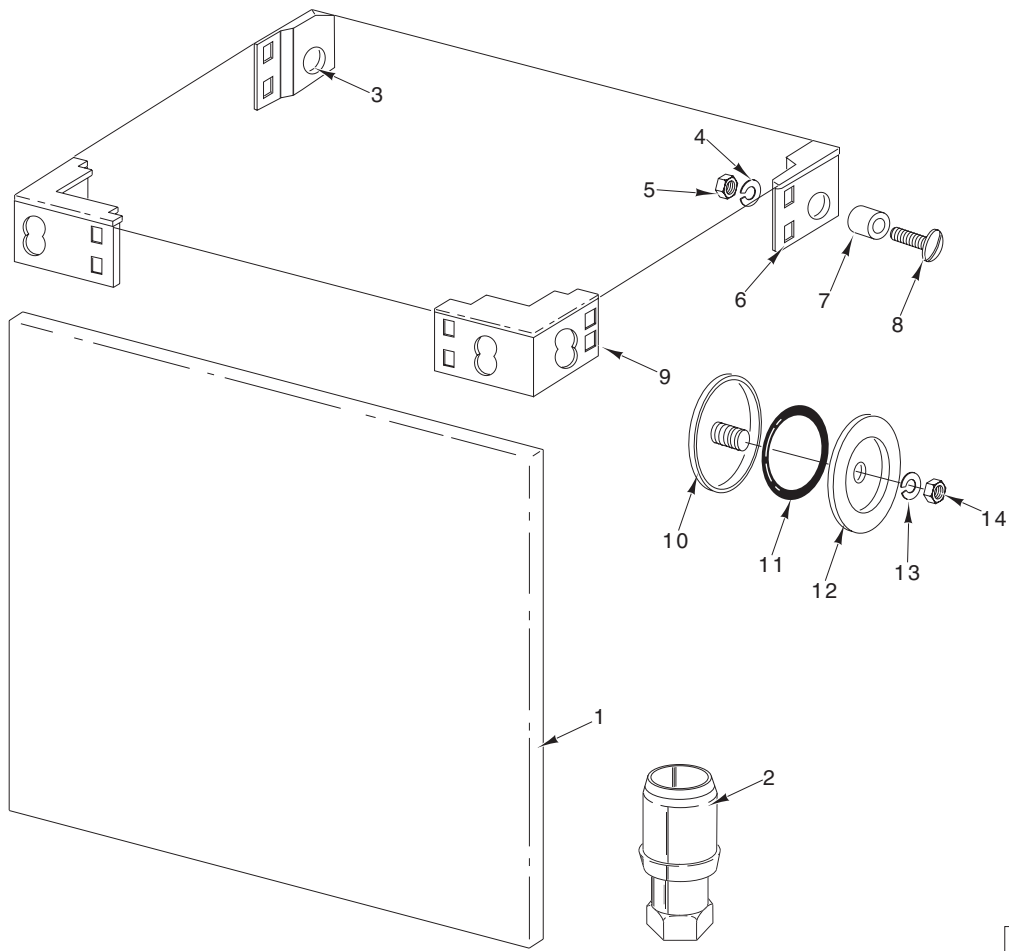


PL-53032

**VENT ASSEMBLY**

**VENT ASSEMBLY**

ILLUS. PL-53032	PART NO.	NAME OF PART	AMT.
1	00-288174	Bumper – Button .....	4
2	00-288059	Baffle – Vent .....	4
3	00-474521	Vent Stack Weldment (On Roof) .....	1
4	00-474816	Gasket – Vent .....	1
5	NS-015-01	Nut 1/4-20 Hex (SST) .....	4
6	WL-006-17	Lockwasher 1/4 Medium .....	9
7	SC-041-05	Cap Screw 1/4-20 x 5/8 Hex Hd. ....	5
8	00-474516	Vent Baffle Weldment (On Ceiling) .....	1

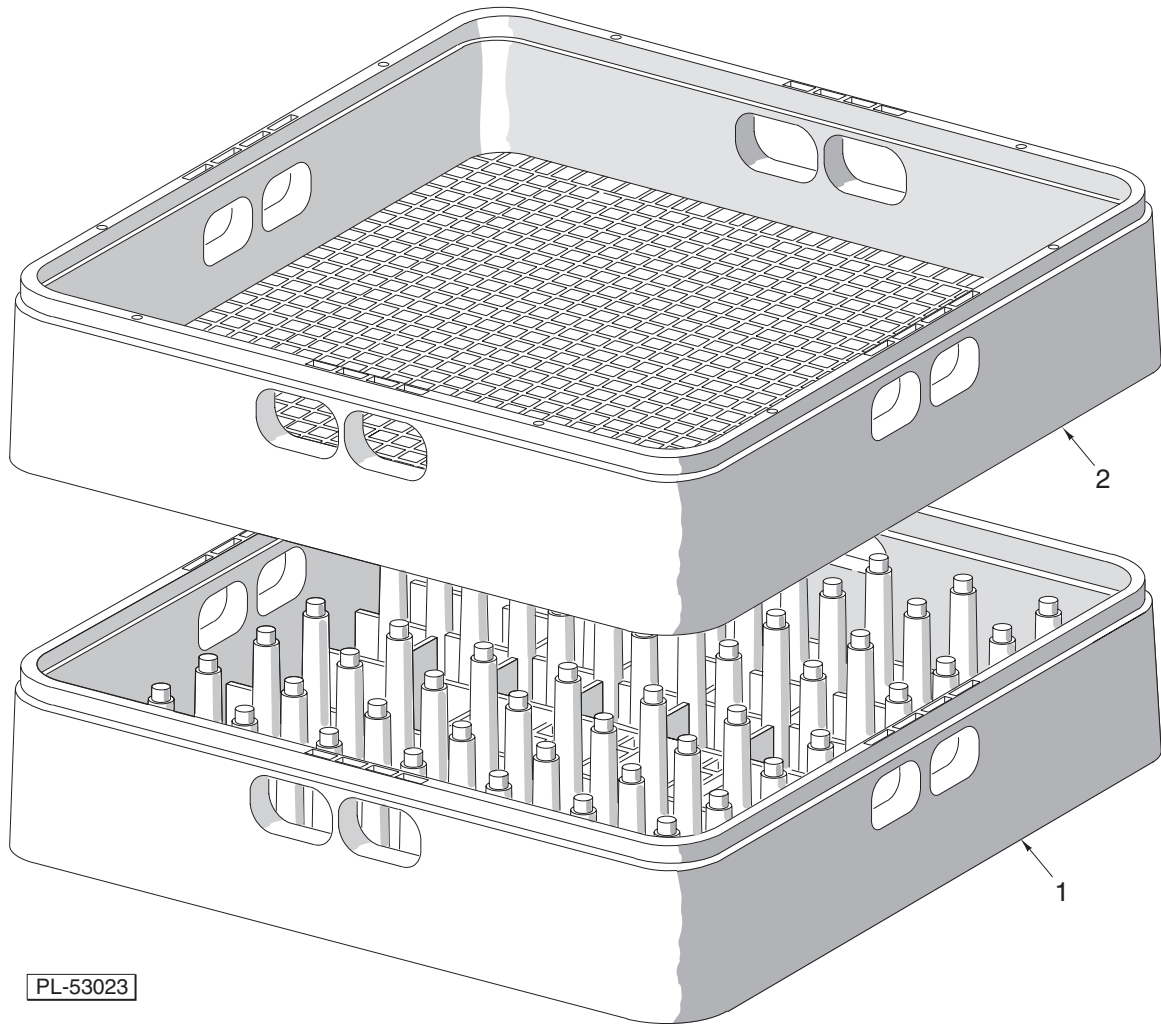


PL-52106

**MISCELLANEOUS**

MISCELLANEOUS

ILLUS.	PART NO.	NAME OF PART	AMT.
PL-52106			
1	00-329208	Panel – Front .....	1
2	00-288946-00002	Foot – Adjustable (1 <sup>5</sup> / <sub>8</sub> ) (SST) .....	4
3	00-119082	Insert – Tank Corner (Left Rear) .....	1
4	NS-015-11	Nut <sup>5</sup> / <sub>16</sub> -18 Hex .....	11
5	WL-006-22	Lockwasher <sup>5</sup> / <sub>16</sub> Light .....	11
6	00-119083	Insert – Tank Corner (Right Rear) .....	1
7	00-119047	Spacer – Tank & Chamber .....	6
8	SC-053-20	Mach. Screw <sup>5</sup> / <sub>16</sub> -18 x 1 Truss Hd. (SST) .....	6
9	00-119081	Insert – Tank Corner (Front) .....	2
10	00-119244	Cap & Stud Assy .....	3
11	00-067500-00031	O-Ring .....	3
12	00-119254	Retainer – Cap & Stud .....	3
13	WL-006-17	Lockwasher <sup>1</sup> / <sub>4</sub> Medium .....	3
14	NS-015-01	Nut <sup>1</sup> / <sub>4</sub> -20 Hex (SST) .....	3
	00-294513-00001	Wire Harness – Heat Therm. (RH Controls) (Not Shown) .....	1
	00-294526-00001	Wire Harness – Heat Therm. (LH Controls) (Not Shown) .....	1
	SC-053-16	Mach. Screw <sup>5</sup> / <sub>16</sub> -18 x <sup>5</sup> / <sub>8</sub> Truss Hd. (SST) (Not Shown) .....	5



### DISH RACKS

ILLUS.	PART NO.	NAME OF PART	AMT.
1	00-315191	Rack – Peg (Packaged).....	1
2	00-315193	Rack – Combination (Packaged).....	1
	00-295288	Peg Type Tray Rack (Packaged).....	1
	00-474800	Rack (6 Pan).....	1