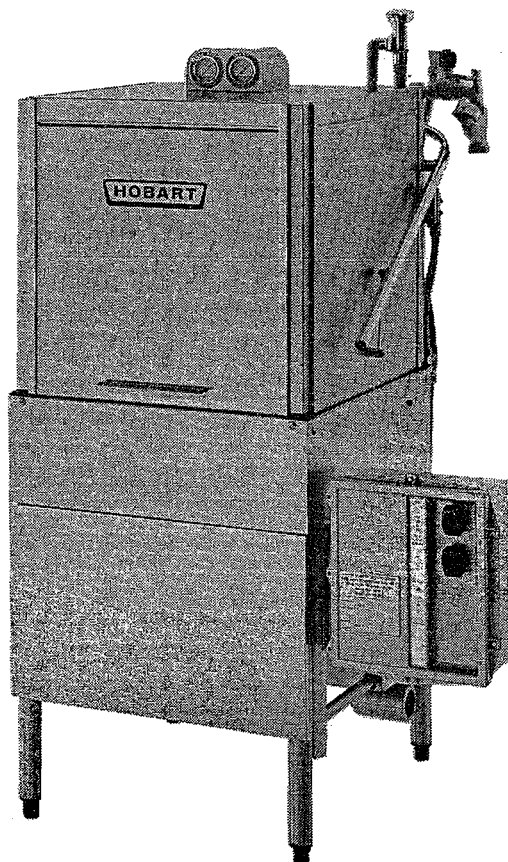


HOBART

INSTRUCTION MANUAL

... with Replacement Parts



AM-12 & AM-12C DISHWASHER

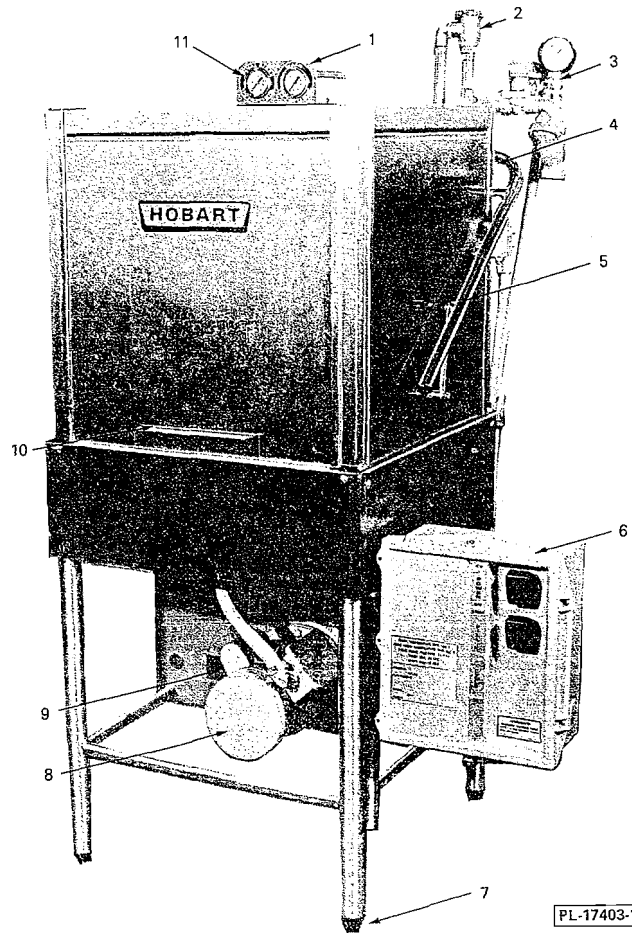
(INCLUDES MOTOR PARTS)

ML-31819 – AM-12
ML-31820 – AM-12C

THIS MANUAL REPLACES AND SHOULD BE USED
INSTEAD OF FORM 12364C (9-80)

PRIOR ML'S COVERED IN THIS MANUAL:

ML-18500 – AM-12
ML-18501 – AM-12C



Installation, Operation and Care of MODELS AM-12 AND AM-12C DISHWASHERS

Save These Instructions

GENERAL

The models AM-12 and AM-12C are semi-automatic, fresh water rinse dishwashers.

They incorporate a solid state electronic control system which regulates the timed cycle, water temperature, motor protection and timed fill.

MODELS

The AM-12 model is a straight-thru dishwasher with two counterbalanced side doors (5, Fig. 1) and a non-counterbalanced front inspection door (10, Fig. 1). The standard front trim panel requires no fasteners.

The AM-12C model is for corner installation and has two adjacent counterbalanced doors.

MOTORS

The dishwashers are equipped with Hobart-built, 1 H.P., two pole, 3450 R.P.M. motors with thermal overload protection.

VACUUM BREAKER

An atmospheric vacuum breaker (2, Fig. 1), in the rinse and fill line, prevents any reverse flow of water from the dishwasher into the potable (fresh) water supply.

HEATER PROTECTION

A float is located in the wash tank to automatically turn off the heat supply if the water level is too low. Once the water level returns to a safe level, the heating circuit is operational if heat is demanded.

Tank water is heated by steam, gas, or electricity.

REDUCED VOLTAGE CONTROL (STANDARD)

A control transformer is used to provide low voltage for the solid state control circuits. This control transformer also supplies 115 V.A.C. to the control components.

INSTALLATION

LOCATION

Adequate space must be available to open and service the control box (6, Fig. 1). The control box is mounted 4-5/8" below the dish table height when shipped from the factory. It can be changed to 12-5/8" below the dish table by removing two bolts and reinstalling in the two lower holes provided.

Set the dishwasher in its desired location. Adjust the height and level by turning the threaded feet (7, Fig. 1). Make sure the dishwasher is level before making plumbing connections.

Dish tables (1, Fig. 2) should be turned down and fit into the dishwasher. Use a sealer between table and tank lip to prevent leakage. Fasten the dish tables to the tank lip with truss head screws.

PLUMBING

Plumbing connections must comply with applicable sanitary, safety and plumbing codes.

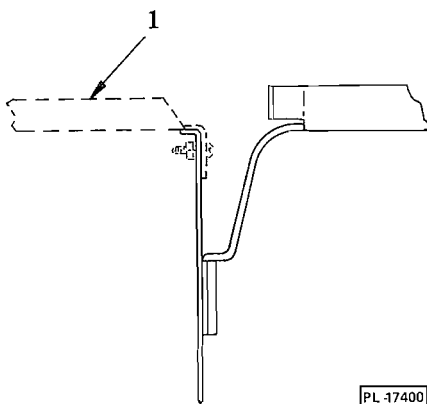


Fig. 2

Drain

Connect the drain to the sewer using 2" pipe. Left-hand drain is standard. Interchange plug for a right-hand drain. If a grease trap is required by code, it should have a minimum flow capacity of 42 gallons per minute.

Water Supply

The supply water should have a temperature of 180°-195° F. minimum and have a flow pressure of 15 to 25 P.S.I. at the pressure gauge tee beside the fill (solenoid) valve.

Use 3/4" pipe for connecting the water supply line to line strainer which is assembled directly ahead of the fill (solenoid) valve. The line strainer prevents foreign matter from reaching the solenoid valve. If flow pressure exceeds 25 P.S.I., a pressure reducing valve (not furnished) must be installed in the water supply line.

Gas Heat

Check gas data plate (9, Fig. 1) attached to dishwasher or tag attached to gas burner tubing for type of gas to be used.

Connect gas burner to gas supply. Check gas burner compression fittings to assure they have not loosened during shipment.

A capped "tee" (not supplied) is recommended to catch loose particles in front of the valve.

The burner is not adjustable. If line pressure is above 7" W.C. (natural gas) or 11" W.C. (L.P. gas), an additional regulator valve (not supplied) must be installed.

The burner is ignited automatically by solid state circuitry. There is no pilot light. Gas flow is regulated by the temperature control circuit through a solenoid valve.

If a failure occurs in the gas heat control board or gas pressure, the reset button, located on the side of the gas burner control box, will pop out. This completely shuts off the gas heat system. To reset, push the button in. If system does not reset, contact an authorized Hobart service office.

Steam Heat

The steam supply must be between 15 and 50 P.S.I. flowing pressure. Steam flow is controlled by a solenoid valve as well as a mechanical globe valve.

AM-12 INSTRUCTIONS

A 3/4" union connection, for steam supply line, is located behind the control box.

A solid state circuit board controls the steam valve to provide shut-off. When the dishwasher is not in use, close the globe valve in the line ahead of the solenoid valve.

ELECTRICAL CONNECTIONS

Before making electrical connections, check the specifications on machine data plate (4, Fig. 1) to assure they agree with those of your electrical service.

Electrical and grounding connections must comply with the applicable portions of the National Electrical Code and/or other local electrical codes.

WARNING: DISCONNECT ELECTRICAL POWER SUPPLY AND PLACE A TAG AT DISCONNECT SWITCH INDICATING CIRCUIT IS BEING WORKED ON.

See wiring diagram attached inside of control box cover. Refer to chart for correct wire and fuse sizes when connecting dishwasher.

BRANCH CIRCUIT SIZE AND PROTECTION

MACHINES WITH ELECTRIC HEAT

Volts	Ph.		Min. Ampacity	Max. Ckt. Time Delay Fuse	60°C Copper Wire Size
100-120	1	Motor Only	25	25	10
100-120	1	Electric Heat Only	60	60	4
200-240	1	Motor	50	50	6
200-240	3	& Electric	30	30	10
400-480	3	Heat	15	15	14

MACHINES WITH STEAM OR GAS HEAT

Volts	Ph.		Min. Ampacity	Max. Protective Device	60°C Copper Wire Size
100-120	1		30	30	10
200-240	1	Motor &	15	15	14
200-240	3	Valves	15	15	14
400-480	3		15	6	14

A fused disconnect switch or circuit breaker (not furnished) MUST be installed in the electrical service line supplying this dishwasher and should meet the requirements of your local electrical code. All connections are made at the terminal block in the control box.

Connect a permanent electrical power supply to the incoming power supply block (1, Fig. 3) and a

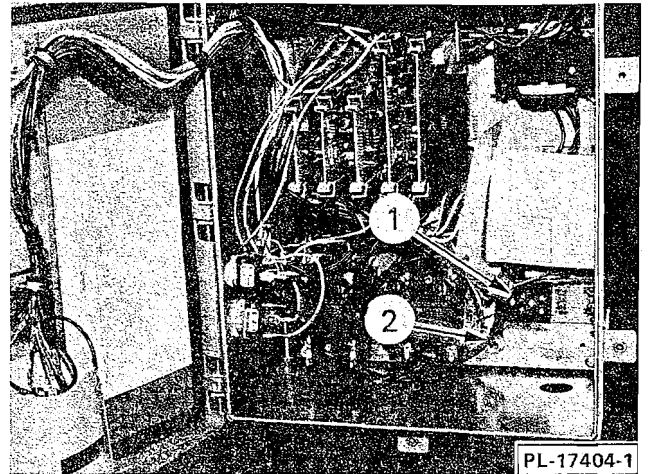


Fig. 3

ground lead to the grounding lug (2, Fig. 3) in the control box.

Three-phase motors must rotate the impeller in the direction of the arrow located on the pump housing (counterclockwise). To check rotation, remove motor fan cover (8, Fig. 1). Close machine doors. Connect power to machine and push the power switch ON then OFF. Motor fan must rotate counterclockwise when facing fan.

If rotation is incorrect, **DISCONNECT ELECTRICAL POWER SUPPLY** and interchange any two of the incoming power supply leads. Re-energize and verify correct rotation. Replace fan cover.

OPERATION

The dishwasher can be operated in AUTOMATIC or MANUAL by positioning the Cycle switch (5, Fig. 4) in desired position. When Cycle switch is set

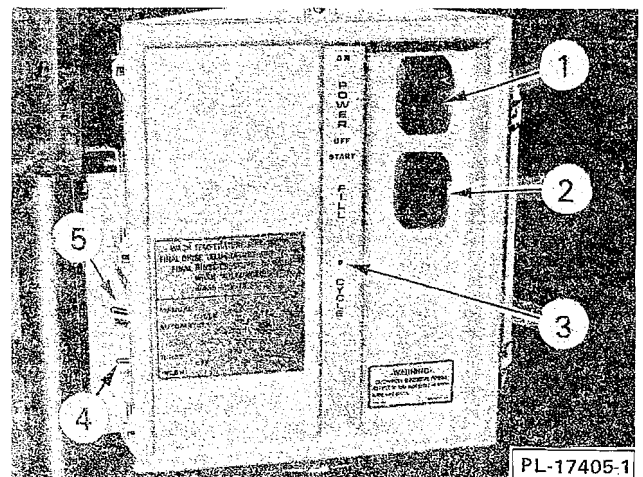


Fig. 4

for AUTOMATIC, the WASH/RINSE switch (4, Fig. 4) must be in the OFF position. When Cycle switch is set for MANUAL, wash operation is accomplished when WASH/RINSE switch is in WASH position. To rinse in MANUAL operation, hold WASH/RINSE switch in RINSE position for desired rinse time.

When operating the dishwasher in AUTOMATIC setting, close door (5, Fig. 1) to start cycle. When pilot light (3, Fig. 4) goes off, cycle is completed. If cycle is interrupted, such as opening and closing the door to add a dish, the timer resets and starts a new cycle. This feature provides a complete cycle to insure proper cleaning of an added article. Before opening the door during a cycle, first turn off POWER switch; then wait 10 seconds to avoid water splashing from the wash arms.

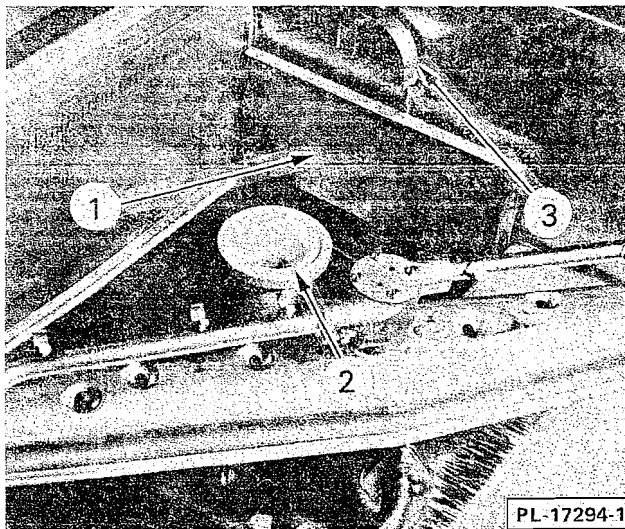


Fig. 5

PREPARATION

Place overflow tube (2, Fig. 5), overflow cover (1, Fig. 5), end cover (1, Fig. 6), slanted strainer (2, Fig. 6) and strainer bucket (3, Fig. 6) in position.

Scatter the initial charge of detergent on the slanted strainer. Replenish as needed unless automatic detergent dispenser has been added by others.

Close the counterbalanced doors (5, Fig. 1) which automatically closes the drain. On straight-thru

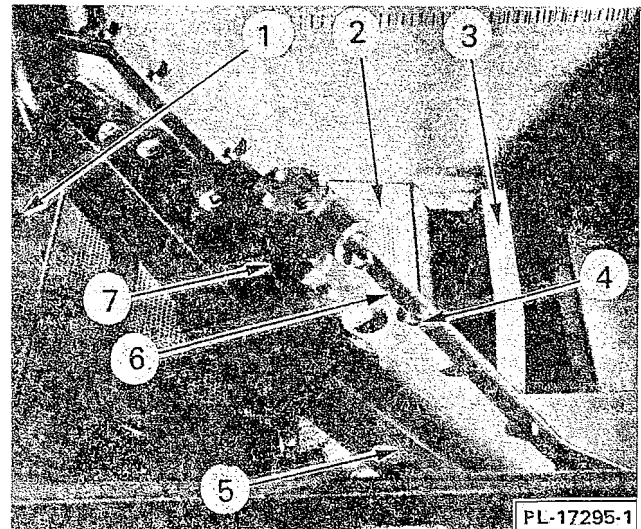
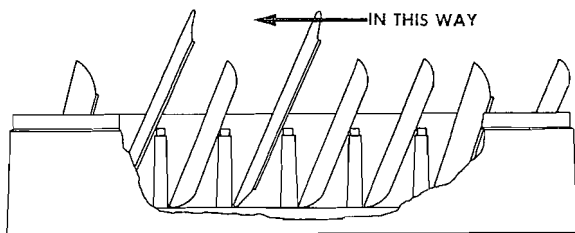


Fig. 6

model, the front inspection door (10, Fig. 1) must be closed before counterbalanced doors can be lowered.

Push POWER switch (1, Fig. 4) to ON. Push and release timed FILL switch (2, Fig. 4) to start automatic fill operation. Wait a full 2 minutes 18 seconds for the timed fill cycle to complete and shut off.

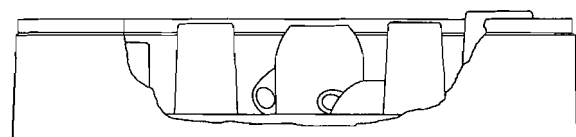
The wash thermometer (1, Fig. 1) should register 150°-160° F. during wash cycle. The rinse thermometer (11, Fig. 1), during rinsing operation, should register 180°-195° F. minimum. These temperatures are necessary for dishwashing and sanitization.

DISHWASHING

Scrape the dishes to remove large particles of food and debris. Water-scrape the dishes by means of a spray of water from the water system or by a stream of recirculating water before or after racking the dishes.

When racking dishes DO NOT stack one on top of another. Water must have free access to both sides of every dish.

Stand plates and flat dishes up edgewise in mixed dish rack (Fig. 7).



PL-15638

Fig. 7

Cups, glasses, and bowls should be placed open-side down (bottoms up) in cup, glass, and silver rack (Fig. 7).

Knives, forks, spoons and small pieces should be scattered loosely over screen bottom of cup, glass, and silver rack.

After filling rack, raise the doors (5, Fig. 1) and slide rack into dishwasher. Close the doors. Wash and rinse cycle starts automatically and stops after completion.

CLEANING

Push POWER switch (1, Fig. 4) to OFF.

Open doors. Clean off "soiled" and "clean" dish tables into dishwasher. Drain machine by pulling drain lever (3, Fig. 5).

Remove and empty slanted strainer (2, Fig. 6) and strainer basket (3, Fig. 6). Wash and rinse thoroughly.

Raise overflow cover (1, Fig. 5) and remove overflow tube (2, Fig. 5). Thoroughly cleanse and flush dishwasher interior. Wash and rinse overflow tube inside and out.

Leave doors open to allow interior to air dry.

Make sure that wash (5, Fig. 6 & 3, Fig. 8) and rinse arms (6, Fig. 6 & 2, Fig. 8) rotate freely and are free of any obstructions. Refer to MAINTENANCE if any obstructions are present.

Check rinse nozzles (4, Fig. 6 & 1, Fig. 8) to make sure they are free of any lime and solids.

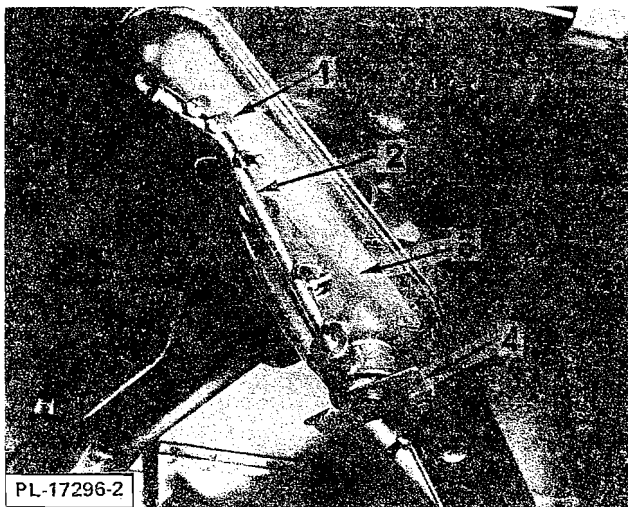


Fig. 8

MAINTENANCE

WARNING: DISCONNECT ELECTRICAL POWER SUPPLY AND PLACE A TAG AT THE DISCONNECT SWITCH INDICATING CIRCUIT IS BEING WORKED ON BEFORE BEGINNING ANY MAINTENANCE PROCEDURE.

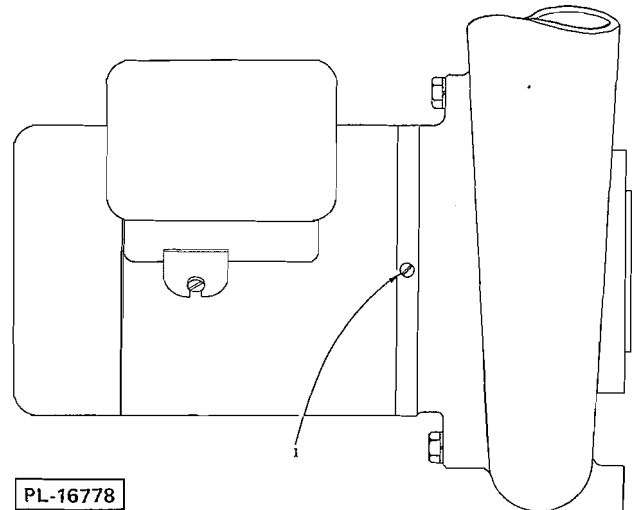


Fig. 9

LUBRICATION

NOTE: Contact your Hobart Sales and Service Office for proper lubricants.

Motor

DISCONNECT ELECTRICAL POWER SUPPLY and lubricate the motor once or twice a year with the approved lubricant. Remove the grease plug (1, Fig. 9) and add one pump from a standard grease gun.

CAUTION: DO NOT over-lubricate; excessive lubrication can do more damage than under-lubrication.

WASH ARMS

Both wash arms (5, Fig. 6 & 3, Fig. 8) and both rinse arms (6, Fig. 6 & 2, Fig. 8) should turn freely and continue turning for a few seconds after being whirled by hand. To check, **DISCONNECT ELECTRICAL POWER SUPPLY**, rotate arms, and remove any obstructions causing improper operation.

If the slanted strainer (2, Fig. 6) or strainer bucket (3, Fig. 6) is not properly in place, obstructions (such as food particles or bones) may clog the wash arm nozzles. The wash arms are easily removed for cleaning.

To remove the lower wash arm (5, Fig. 6), first lift off the rinse arm (6, Fig. 6), then using a dowel (or end of punch) unscrew the rinse arm bearing pin (7, Fig. 6) and lift off lower wash arm. It is not necessary to remove the spacer located on lower wash arm shaft.

The upper wash arm (3, Fig. 8) is removed by unscrewing the hand knob (4, Fig. 8) and removing upper rinse arm and wash arm together. Be careful not to drop these arms.

TROUBLESHOOTING

NOTE: If symptom persists after possible causes have been checked-out, contact an authorized Hobart Service Office.

SYMPTOM – Dishes not clean

POSSIBLE CAUSE:

1. Insufficient wash water due to drain obstruction preventing proper drain closing.
2. Worn or torn drain "O" ring allowing wash water to drain.
3. Loss of water pressure due to pump obstructions.

DISCONNECT ELECTRICAL POWER SUPPLY and drain tanks. Check for any obstruction at the pump intake.

4. Incorrect water temperature. Check circuit breaker to electric heat supply, or main steam valve. Make certain valve is completely open.
5. Incorrect detergent dispensing. Contact your detergent representative

SYMPTOM – Spotting of silverware, glasses and dishes

POSSIBLE CAUSE:

1. Improperly loaded racks.
2. Incorrect rinse water temp. (min. 180° F.)
3. Loss of water pressure due to pump obstruction.

DISCONNECT ELECTRICAL POWER SUPPLY and drain tanks. Check for any obstruction at the pump intake.

4. Excessively hard water.
5. Incorrect detergent for water conditions.

SYMPTOM – Inadequate Rinse

POSSIBLE CAUSE:

1. Dirty line strainer causing reduced water flow. Turn off water supply, remove strainer cap, withdraw and clean screen. Reassemble.
2. Low supply line pressure.

A pressure gauge (3, Fig. 1) is provided in the final rinse piping. Pressure should be 15-25 P.S.I. (20 P.S.I. is nominal). To check the rinse pressure, turn the petcock 90° (parallel to the line) during final rinse. It is important that the petcock be closed (perpendicular to the line) by the end of the rinse cycle or damage to the gauge may result.

SYMPTOM – Leaking valve (except solenoid type)

POSSIBLE CAUSE:

1. Foreign material preventing proper valve operation.
NOTE: A critical period is soon after installation when pipe compound or metal shavings may lodge at the valve seat. Shut off supply line. Unscrew and lift bonnet from valve body. Clean valve and reassemble.
2. If a solenoid valve is malfunctioning it is recommended that authorized Hobart Service personnel be contacted.

SYMPTOM – No wash tank heat

POSSIBLE CAUSE:

1. The machine is equipped with a low water safety device which shuts off the heat if water level drops. Check for proper water level.
2. Circuit breaker to heat system tripped.
3. Gas line closed.
4. Steam valve not open completely.

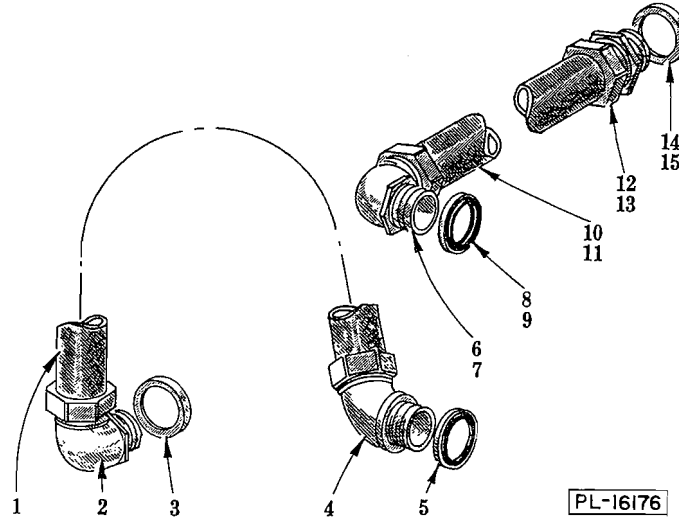
SYMPTOM – No machine operation

POSSIBLE CAUSE:

1. Blown fuse or tripped circuit breaker at power supply.

INDEX

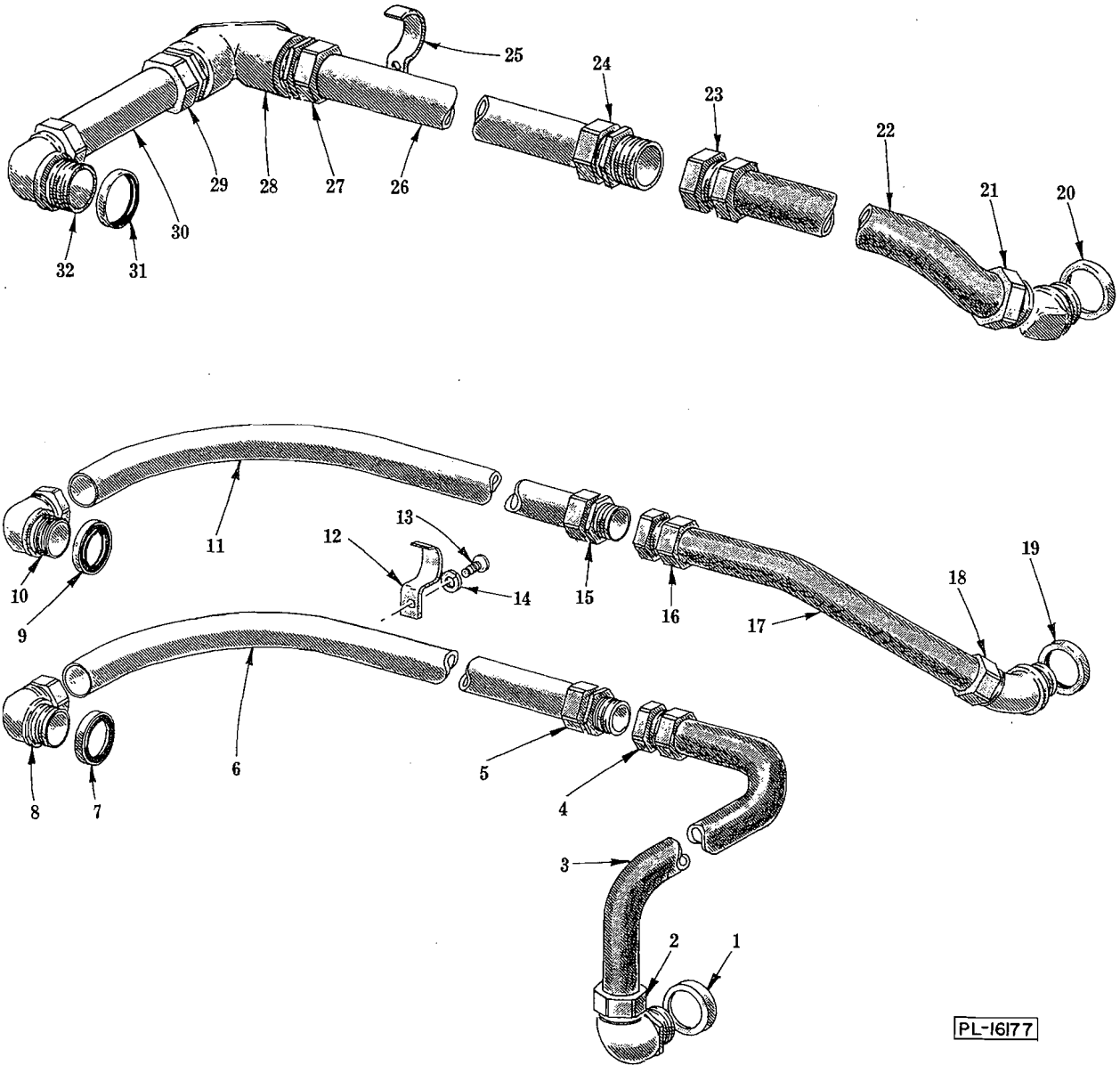
Page	Description
9	Conduit (R.H. Controls)
11	Conduit (L.H. Controls)
13	Control Box
15	AM-12 Motor & Pump
17	AM-12A Motor & Pump
19	Motor Parts
21	Lower Wash Arm (Thrust Washer Type)
23	Lower Wash Arm (Ball Bearing Type)
25	Upper Wash Arm (Thrust Washer Type)
26	Upper Wash Arm (Ball Bearing Type W/Stationary Rinse)
27	Upper Wash Arm (Ball Bearing Type W/Rotating Rinse)
29	Outside Rinse Piping
31	Inside Rinse Piping
33	Inside Rinse Piping (Low Water Consumption)
35	Door Interlock
36	Door (Straight - Thru)
37	Door (Corner)
38	Door Lift Unit (Straight - Thru)
39	Door Lift Unit (Corner)
41	Strainers & Drain
43	Track Unit
45	Miscellaneous
47	Low Water Protection
49	Electric Heat
51	Gas Burner Unit
53	Flue & Igniter Control (Gas)
55	Steam Injector
56	Dish Racks



**CONDUIT
(R.H. CONTROLS)**

ILLUS. PL-16176	PART NO.	NAME OF PART	AMT.
1	P-77657-38	Conduit - 3/4" x 32" (Waterproof)	1
2	FE-8-25	Connector - 90° "Sealtite" (3/4" Male Thd. x 3/4" Flex. Cnd.)	1
3	FE-8-11	3/4" Gasket Assy	1
4	FE-8-24	Connector - 45° "Sealtite" (3/4" Male Thd. x 3/4" Flex. Cnd.)	1
5	FE-8-11	3/4" Gasket Assy	1
**6	FE-8-25	Connector - 90° "Sealtite" (3/4" Male Thd. x 3/4" Flex. Cnd.)	1
*7	FE-8-33	Connector - 90° "Sealtite" (1" Male Thd. x 1" Flex. Cnd.)	1
**8	FE-8-11	3/4" Gasket Assy	1
*9	FE-8-12	1" Gasket Assy	1
**10	P-77657-39	Conduit - 3/4" x 10" (Waterproof)	1
*11	C-104192-9	Conduit - 1" x 9-1/4" (Waterproof)	1
**12	FE-8-23	Connector - Straight "Sealtite" (3/4" Male Thd. x 3/4" Flex. Cnd.)	1
*13	FE-8-31	Connector - Straight "Sealtite" (1" Male Thd. x 1" Flex. Cnd.)	1
**14	FE-8-11	3/4" Gasket Assy	1
*15	FE-8-12	1" Gasket Assy	1

*110-120 V.
**200 V. & Above.



CONDUIT
(L.H. CONTROLS)

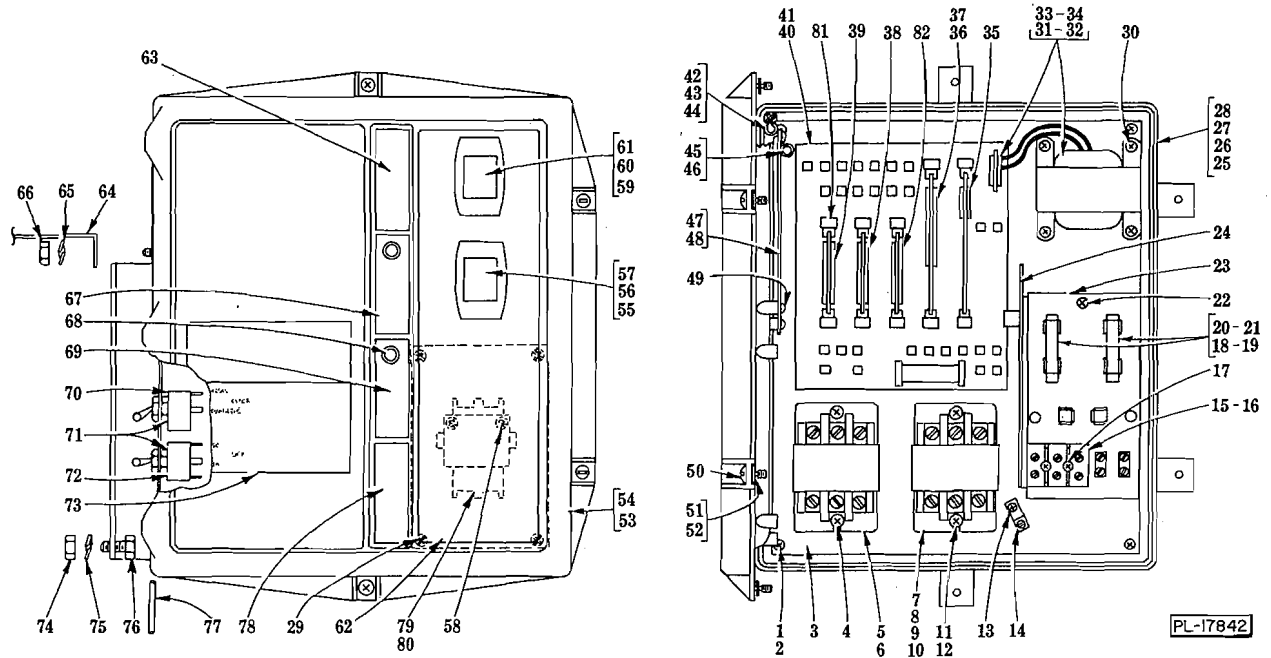
**CONDUIT
(L.H. CONTROLS)**

ILLUS. PL-16177	PART NO.	NAME OF PART	AMT.
1	FE-8-11	3/4" Gasket Assy	1
2	FE-8-25	Connector - 90° "Sealtite" (3/4" Male Thd. x 3/4" Flex. Cnd.)	1
3	P-77657-1	Conduit - 3/4" x 18" (Waterproof)	1
4	FE-7-44	Connector - Straight "Sealtite" (3/4" Female Thd. x 3/4" Flex. Cnd.)	1
5	FE-7-32	Connector - Straight (3/4" Male Thd. x 3/4" Thinwall)	1
6	C-119190-1	Conduit - 3/4" Thinwall (Control Box to Coupling)	1
7	FE-8-11	3/4" Gasket Assy	1
8	FE-7-35	Ell - 90° Short (3/4" Male Thd. x 3/4" Thinwall)	1
**9	FE-8-11	3/4" Gasket Assy	1
**10	FE-7-35	Ell - 90° Short (3/4" Male Thd. x 3/4" Thinwall)	1
**11	C-119190-2	Conduit - 3/4" Thinwall (Control Box to Coupling)	1
**12	FE-6-46	Clamp - 3/4" Conduit	2
**13	SC-21-23	Mach. Screw - #10-24 x 1/2" Rd. Hd	1
**14	WL-6-7	Lock Washer - #10 Medium	1
**15	FE-7-32	Connector - Straight (3/4" Male Thd. x 3/4" Thinwall)	1
**16	FE-7-44	Connector - Straight "Sealtite" (3/4" Female Thd. x 3/4" Flex. Cnd.)	1
**17	P-77657-5	Conduit - 3/4" x 22" (Waterproof)	1
**18	FE-8-24	Connector - 45° "Sealtite" (3/4" Male Thd. x 3/4" Flex. Cnd.)	1
**19	FE-8-11	3/4" Gasket Assy	1
*20	FE-8-12	1" Gasket Assy	1
*21	FE-8-32	Connector - 45° "Sealtite" (1" Male Thd. x 1" Flex. Cnd.)	1
*22	C-104192-10	Conduit - 1" x 24-1/2" (Waterproof)	1
*23	FE-14-37	Connector - Straight (1" Female Thd. x 1" Flex. Cnd.)	1
*24	FE-7-33	Connector - Straight (1" Male Thd. x 1" Thinwall)	1
*25	B-122915	Clamp - 1" Conduit	1
*26	B-119311-1	Conduit - 1" x 16" (Thinwall)	1
*27	FE-7-33	Connector - Straight (1" Male Thd. x 1" Thinwall)	1
*28	FE-7-30	Ell - 90° x 1" Pulling	1
*29	FE-7-33	Connector - Straight (1" Male Thd. x 1" Thinwall)	1
*30	B-119311-2	Conduit - 1" x 4" (Thinwall) (Pulling Ell to Control Box)	1
*31	FE-8-12	1" Gasket Assy	1
*32	FE-7-36	Ell - 90° Short (1" Male Thd. x 1" Thinwall)	1

*110-120 V.

**200 V. & Above.

AM-12 REPLACEMENT PARTS



CONTROL BOX UNIT

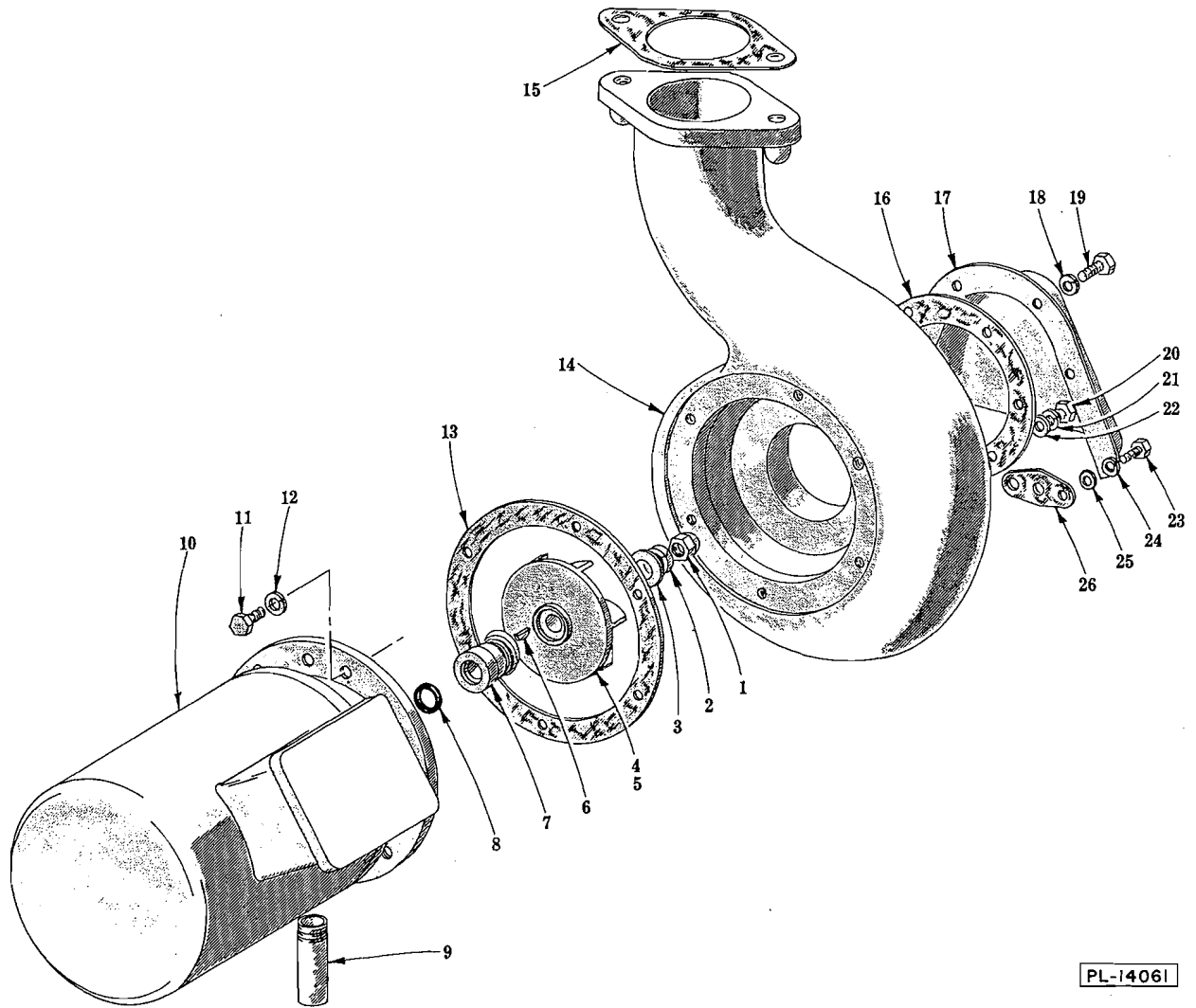
ILLUS. PL-17842	PART NO.	NAME OF PART	AMT.
1	SC-71-11	Mach. Screw - #10-24 x 3/8" Phil. Truss Hd	4
2	WL-7-12	Lock Washer - #10 Ext. Shakeproof	4
3	E-112012	Plate - Base	1
4	SD-8-25	Self-Tapping Screw - #10 x 3/8" Phil. Bind. Hd., Type B	2
5	B-112124	Contact - Magnetic (2 Pole)	AR
6	B-111886	Contact - Magnetic (3 Pole)	AR
7	B-112124	Contact - Magnetic (2 Pole) (Elec. Heat)	AR
8	B-111886	Contact - Magnetic (3 Pole) (Elec. Heat)	AR
9	B-205113-1	Relay (Gas Heat)	1
10	B-112173	Insulator (Gas Heat)	1
11	SD-8-25	Self-Tapping Screw - #10 x 3/8" Phil. Bind. Hd., Type B (Elec. Heat)	2
12	SD-8-25	Self-Tapping Screw - #20 x 3/8" Phil. Bind. Hd., Type B (Gas Heat)	1
13	SD-8-25	Self-Tapping Screw - #10 x 3/8" Phil. Bind. Hd., Type B	1
14	C-118544-1	Lug - Solderless	1
15	C-111995	Block - Terminal	1
16	C-112312	Board - Insulating	1
17	SD-19-28	Self-Tapping Screw - #8 x 1-3/8" Phil. Rd. Hd., Type B	2
18	FE-16-29	Fuse - Fiber Tube (1 Amp. BBS-1) (50 Hz., 3 Ph.)	2

CONTROL BOX UNIT (Cont.)

ILLUS. PL-17842	PART NO.	NAME OF PART	AMT.
19	FE-16-30	Fuse - Fiber Tube (2 Amp. BBS-2) (50 Hz., 1 Ph.)	2
20	FE-19-48	Fuse - Fiber Tube (.8 Amp. BBS-.8) (60 Hz., 3 Ph.)	2
21	FE-19-50	Fuse - Fiber Tube (1.6 Amp. BBS-1.6) (60 Hz., 1 Ph.)	2
22	SD-8-18	Self-Tapping Screw - #8 x 3/8" Phil. Bind. Hd., Type B	1
23	C-118300	Terminals & Mounting Board Assy	1
24	D-112059	Insulator - Terminal Board	1
**25	E-119092-1	Control Box (R.H. Controls)	1
**26	E-119138-1	Control Box (L.H. Controls)	1
*27	E-119309	Control Box (R.H. Controls)	1
*28	D-119182	Control Box (L.H. Controls)	1
29	SD-12-4	Self-Tapping Screw - #8-32 x 3/8" Phil. Truss Hd., Type 23	4
30	SD-8-25	Self-Tapping Screw - #10 x 3/8" Phil. Bind. Hd., Type B	4
31	C-111983-1	Power Input Board Assy. (110-120 V., 60 Hz., 1 Ph.) (200-230 V., 60 Hz., 1 Ph.; W/Pilot Circuit)	1
32	C-111983-2	Power Input Board Assy. (200-230 V., 60 Hz., 3 Ph.; W/Pilot Circuit) (400-460 V., 60 Hz., 3 Ph.)	1
33	C-111983-3	Power Input Board Assy. (115 V., 50 Hz., 1 Ph.) (220 V., 50 Hz., 1 Ph.; W/Pilot Circuit)	1
34	C-111983-4	Power Input Board Assy. (220 V., 50 Hz., 3 Ph.; W/Pilot Circuit) (380 V., 50 Hz., 3Ph.)	1
35	E-120952	Power Supply Board Assy	1
36	E-118419	Timer Board Assy. (ML-18500 & ML-18501)	1
37	E-294120	Timer Board Assy. (ML-31819 & ML-31820)	1
38	D-278190	Motor Protector Board Assy	1
39	E-122853	Temperature Control Board Assy	1
40	D-120354-1	Master Board Assy. (ML-18500 & ML-18501)	1
41	D-120354-3	Master Board Assy. (ML-31819 & ML-31820)	1
42	C-112159	Retainer - Clamp	1
43	C-78752-4	Clamp - Wire	1
44	SD-8-18	Self-Tapping Screw - #8 x 3/8" Phil. Bind. Hd., Type B	1
45	C-78752-4	Clamp - Wire	2
46	SD-12-20	Self-Tapping Screw - #8-32 x 1/2" Phil. Truss Hd., Type 23	2
47	D-111940-1	Reed Mounting Board Assy. (Incls. item #48)	1
48	C-111964	Switch - Reed	2
49	SD-12-4	Self-Tapping Screw - #8-32 x 3/8" Phil. Truss Hd., Type 23	2
50	B-112129	Screw - Captive	4
51	B-112016	Retainer - Captive Screw	4
52	B-112169	Spacer - Lid	4
53	C-288462-1	Lid & Gasket Assy. (Incls. item #54)	1
54	C-112068	Gasket - Control Box	1
55	D-120872-2	Start Switch Assy. (Momentary) (Timed Fill)	1
56	SD-32-3	Self-Tapping Screw - #6-19 x 3/8" Phil. Pan Hd. "Plastite"	2
57	WL-7-2	Lock Washer - #6 Ext. Shakeproof	2
58	SD-8-25	Self-Tapping Screw - #10 x 3/8" Phil. Bind. Hd., Type B	2
59	D-120872-3	On/Off Switch Assy. (Maintained)	1
60	SD-32-3	Self-Tapping Screw - #6-19 x 3/8" Phil. Pan Hd. "Plastite"	2
61	WL-7-2	Lock Washer - #6 Ext. Shakeproof	2
62	C-112521	Plate - Base (Dispenser Contactor)	1
63	B-276878	Plate - Identification (Power)	1
64	B-119114	Bracket - Control Box	1
65	WL-6-16	Lock Washer - 1/4" Light	2
66	NS-15-1	Full Nut - 1/4"-20 Hex Fin	2
67	B-276879	Plate - Identification (Fill) (Timed Fill)	1
68	B-11936	Solid State Pilot Light Assy. (Timed Fill)	1
69	B-276877	Plate - Identification (Cycle) (Timed Fill)	1
70	B-119260	Toggle Switch & Label Assy. (Cycle)	1
71	WL-8-32	Lock Washer - 1/2" Int. Shakeproof	2
72	B-119261	Toggle Switch & Label Assy. (On/Off)	1
73	C-288119	Plate - Data	1
74	NS-15-11	Full Nut - 5/16"-18 Hex Fin	2
75	WL-6-22	Lock Washer - 5/16" Light	2
76	SC-41-11	Cap Screw - 5/16"-18 x 3/4" Hex Hd. (Control Box to Support)	2
77	B-112022	Pin - Control Box & Lid	3
78	B-276875	Plate - Identification (Blank)	1
79	B-112527	Contactor (Soap Dispenser)	1
80	C-122852	Insulator	1
81	D-111849	Edge Guide - P.C. Board	10
82	E-120776	Timed Fill Board Assy	1
	E-119135	Wiring Harness (Not Shown)	1
	FE-22-63	Fuse (3 Amp., 32 V.) (Use in Power Input Board)	1

*110-120 V.

**200 V. & Above.



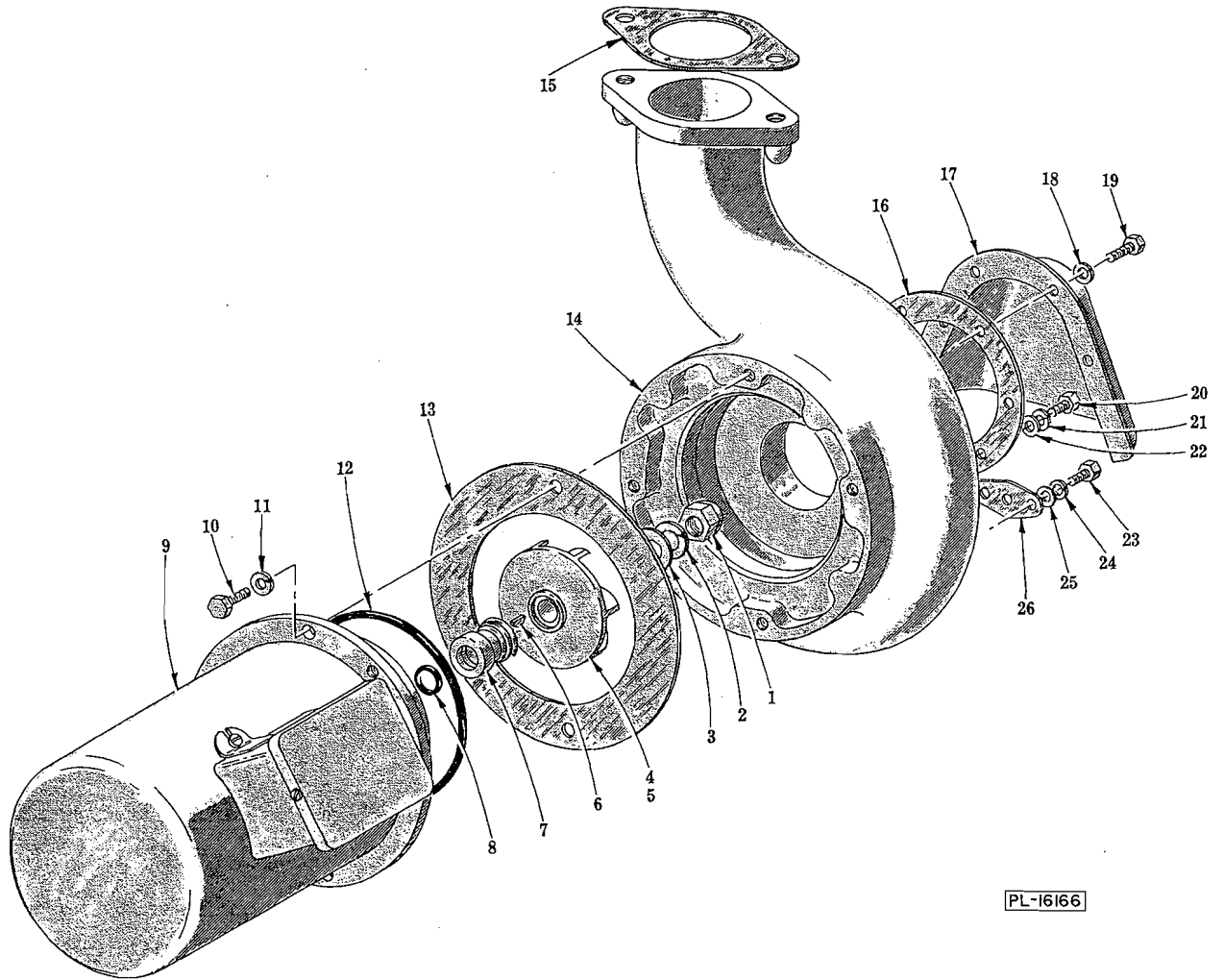
PL-14061

AM-12 MOTOR AND PUMP UNIT

AM-12 MOTOR AND PUMP UNIT
PRIOR TO SERIAL NO. 23-028-320 (AM-12)
12-052-786 (AM-12)
12-052-922 (AM-12C)

ILLUS. PL-14061	PART NO.	NAME OF PART	AMT.
1	NS-24-6	Acorn Nut - 7/16"-20	1
2	WL-6-32	Lock Washer - 7/16" Light	1
3	WS-21-1	Washer	1
4	D-118968	Impeller (60 Hz.)	1
5	D-121567-2	Impeller (50 Hz.)	1
6	KW-3-3	Key - #404 Woodruff	1
7	A-104329	Shaft Seal Assy. - 5/8"	1
8	D-67500-7	"O" Ring	1
9	FP-64-15	Nipple - 3/8" x 2-1/4" Lg. (S.T.O.E.)	1
10	ML-18491	Motor (Give Electrical Spec.)	1
11	SC-41-11	Cap Screw - 5/16"-18 x 3/4" Hex Hd	6
12	WL-6-22	Lock Washer - 5/16" Light	6
*13	B-119265	Gasket Kit (Motor to Pump) (One Set consists of: 1 Blue (.005" Thk.); 1 Brown (.010" Thk.); and 1 Yellow (.020" Thk.))	1 Set
14	E-118961	Shell - Pump	1
15	C-119054	Gasket - Pump Discharge	1
16	C-119050	Gasket - Pump Intake	1
17	C-118960	Shroud - Pump Intake	1
18	WL-6-22	Lock Washer - 5/16" Light	4
19	SC-41-11	Cap Screw - 5/16"-18 x 3/4" Hex Hd	4
20	SC-41-11	Cap Screw - 5/16"-18 x 3/4" Hex Hd	2
21	WL-6-22	Lock Washer - 5/16" Light	2
22	WS-17-8	Washer	2
23	SC-41-5	Cap Screw - 1/4"-20 x 5/8" Hex Hd	2
24	WL-6-17	Lock Washer - 1/4" Medium	2
25	WS-3-48	Washer	2
26	B-119051	Gasket - Pump Drain Hole	1
	B-119299-1	AM-12 Motor & Impeller Assy. (60 Hz., 1 Ph.) (Incls. items #1, 2, 3, 4, 6, 7, 8 & 10)	1
	B-119299-2	AM-12 Motor & Impeller Assy. (60 Hz., 3 Ph.) (Incls. items #1, 2, 3, 4, 6, 7, 8 & 10)	1
	B-119299-3	AM-12 Motor & Impeller Assy. (50 Hz., 1 Ph.) (Incls. items #1, 2, 3, 5, 6, 7, 8 & 10)	1
	B-119299-4	AM-12 Motor & Impeller Assy. (50 Hz., 3 Ph.) (Incls. items #1, 2, 3, 5, 6, 7, 8 & 10)	1

*Select gasket to obtain .005" to .015" clearance between pump and impeller.



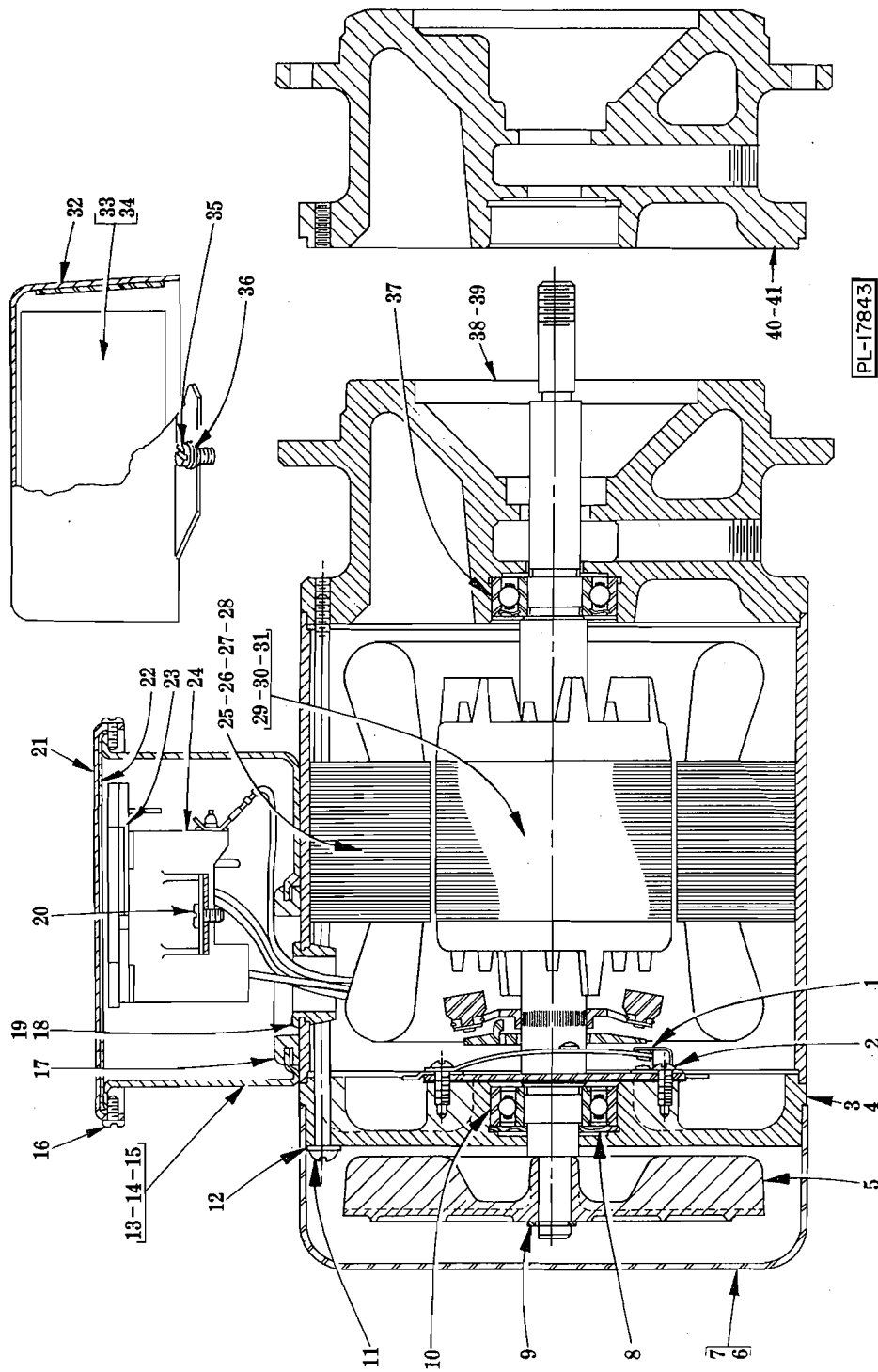
PL-16166

AM-12A MOTOR AND PUMP UNIT

AM-12A MOTOR AND PUMP UNIT
FIRST SERIAL NO. 23-028-320 (AM-12)
12-052-786 (AM-12)
12-052-922 (AM-12C)

ILLUS. PL-16166	PART NO.	NAME OF PART	AMT.
1	NS-24-6	Acorn Nut - 7/16"-20	1
2	WL-6-32	Lock Washer - 7/16" Light	1
3	WS-21-1	Washer	1
4	D-118968	Impeller (60 Hz.)	1
5	D-121567-2	Impeller (50 Hz.)	1
6	KW-3-3	Key - #404 Woodruff	1
7	A-104329	Shaft Seal Assy. - 5/8"	1
8	D-67500-7	"O" Ring	1
9	ML-34217	Motor (Give Elec. Spec.)	1
10	SC-41-29	Cap Screw - 3/8"-16 x 7/8" Hex Hd	2
11	WL-6-27	Lock Washer - 3/8" Light	2
12	D-67500-97	"O" Ring	1
*13	B-277836	Shim Kit (Motor to Pump) (One Set consists of: 1 Blue (.005" Thk.); 1 Brown (.010" Thk.); and 1 Yellow (.020" Thk.))	1 Set
14	E-276281	Shell - Pump	1
15	C-119054	Gasket - Pump Discharge	1
16	C-119050	Gasket - Pump Intake	1
17	C-118960	Shroud - Pump Intake	1
18	WL-6-22	Lock Washer - 5/16" Light	4
19	SC-41-11	Cap Screw - 5/16"-18 x 3/4" Hex Hd	4
20	SC-41-11	Cap Screw - 5/16"-18 x 3/4" Hex Hd	2
21	WL-6-22	Lock Washer - 5/16" Light	2
22	WS-17-8	Washer	2
23	SC-41-5	Cap Screw - 1/4"-20 x 5/8" Hex Hd	2
24	WL-6-17	Lock Washer - 1/4" Medium	2
25	WS-3-48	Washer	2
26	B-119051	Gasket - Pump Drain Hole	1
	B-277786-1	AM-12A Motor & Impeller Assy. (60 Hz., 1 Ph.) (Incls. items #1, 2, 3, 4, 6, 7, 8, 9 & 12)	1
	B-277786-2	AM-12A Motor & Impeller Assy. (60 Hz., 3 Ph.) (Incls. items #1, 2, 3, 4, 6, 7, 8, 9 & 12)	1
	B-277786-3	AM-12A Motor & Impeller Assy. (50 Hz., 1 Ph.) (Incls. items #1, 2, 3, 5, 6, 7, 8, 9 & 12)	1
	B-277786-4	AM-12A Motor & Impeller Assy. (50 Hz., 3 Ph.) (Incls. items #1, 2, 3, 5, 6, 7, 8, 9 & 12)	1

*Select shims to obtain .005" to .012" clearance between pump and impeller.

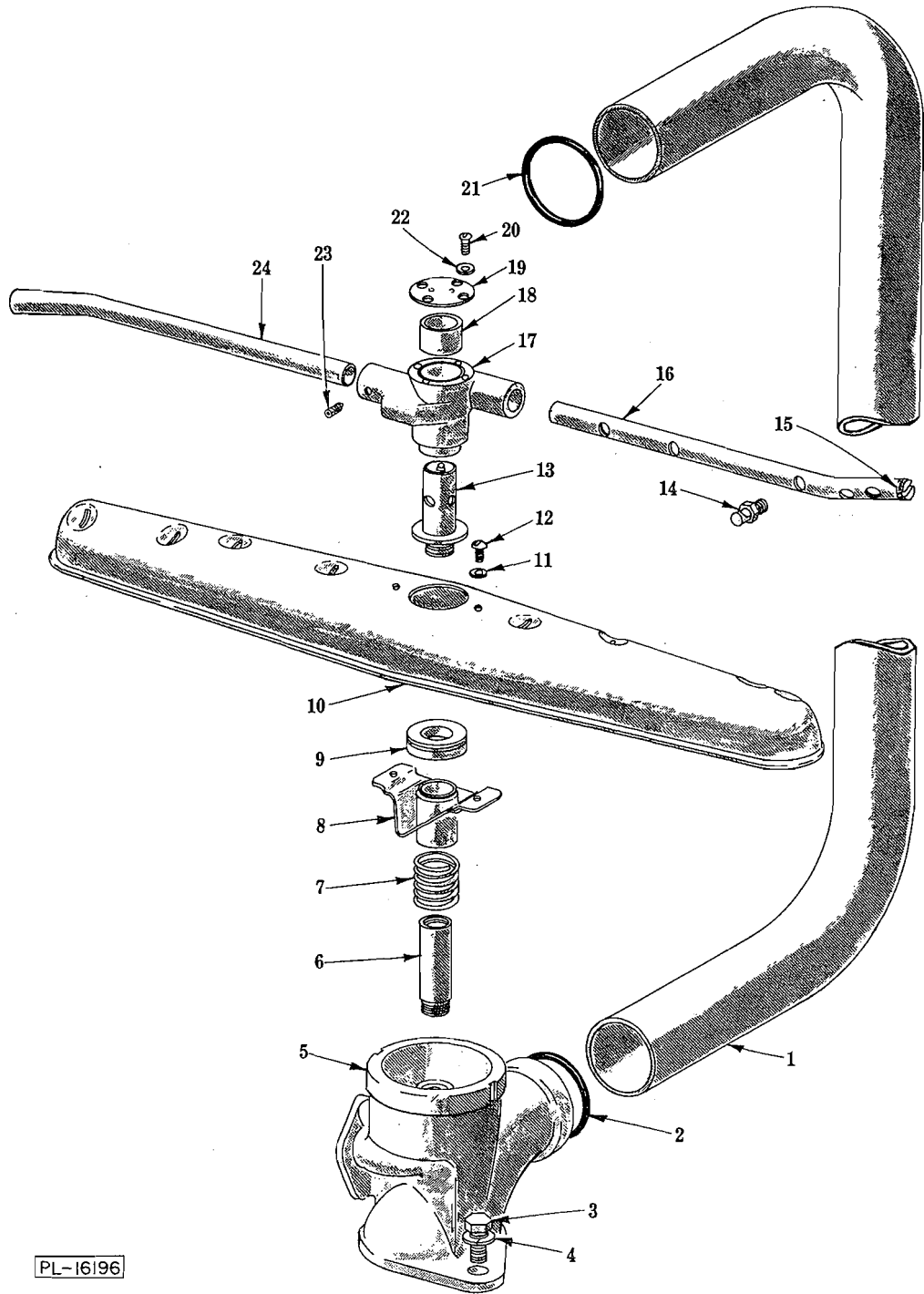


MOTOR UNIT
(AM-12A = ML-34217)
(AM-12 = ML-18491)

ILLUS. PL-17843	PART NO.	NAME OF PART	AMT.
*1	C-119858-2	Switch - Starting (Stationary Part)	1
*2	SC-9-49	Mach. Screw - #6-32 x 3/8" Rd. Hd	2
*3	D-114379-3	Bracket - Bearing (Fan End)	1
**4	D-114379-2	Bracket - Bearing (Fan End)	1
5	D-111493-1	Fan - Ventilating	1
6	R-77067	Cover - Motor End	1
7	SC-9-65	Mach. Screw - #8-32 x 1/4" Rd. Hd	2
8	SL-2-4	Loading Spring - N.D. #S-17	1
9	RR-4-17	Retaining Ring	1
10	BB-20-18	Ball Bearing - N.D. #77503	1
11	SC-81-76	Mach. Screw - #10-24 x 7" Rd. Hd	4
12	WL-8-13	Lock Washer - #10 Int. Shakeproof	4
13	D-113403	Box - Terminal	1
14	SD-15-27	Self-Tapping Screw - #10-24 x 5/16" Pan Hd. "Taptite"	2
15	WL-7-12	Lock Washer - #10 Ext. Shakeproof	2
16	SD-12-45	Self-Tapping Screw - #8-32 x 5/16" Pan Hd., Type 23	2
17	M-60395	Grommet	1
18	M-79118	Bushing - Snap (Field Ring)	1
*19	M-80369	Bushing - Snap (Field Ring)	1
20	SD-12-45	Self-Tapping Screw - #8-32 x 5/16" Pan Hd., Type 23	2
21	C-113405	Cover - Terminal Box	1
22	B-114811	Gasket - Terminal Box Cover	1
23	C-113417	Connector Block Assy	1
24	C-113552	Terminal Block Base Assy	1
*25	D-65477-147-1	Stator Assy. (100-115 V./200-230 V.; 60 Hz.)	1
*26	D-65477-147-2	Stator Assy. (110-120 V./220-240 V.; 50 Hz.)	1
**27	D-65478-110-1	Stator Assy. (200-230 V./400-460 V.; 60 Hz.)	1
**28	D-65478-112-1	Stator Assy. (200-240 V./346-415 V.; 50 Hz.)	1
*29	C-22275-208	Rotor Assy. (100-120 V./200-230 V.; 60 Hz.)	1
*30	C-22275-207	Rotor Assy. (100-120 V./200-240 V.; 50 Hz.)	1
**31	C-15747-288	Rotor Assy. (200-230 V./400-460 V.; 60 Hz.) (200-240 V./346-415 V.; 50 Hz.)	1
32	B-104725	Capacitor Cover & Insulator Assy	1
*33	D-70487-6	Capacitor	1
*34	M-89258	Retainer - Capacitor	1
*35	SD-15-3	Self-Tapping Screw - #10-24 x 1/4" Pan Hd. "Taptite"	2
*36	WS-2-15	Washer (Shims screw to prevent bottoming)	2
37	BB-20-18	Ball Bearing - N.D. #77503	1
38	E-121191-1	Bracket - Bearing (Pump End) (60 Hz.) (AM-12A Only)	1
39	E-121191-2	Bracket - Bearing (Pump End) (50 Hz.) (AM-12A Only)	1
40	E-118969-1	Bracket - Bearing (Pump End) (60 Hz.) (AM-12 Only)	1
41	E-118969-2	Bracket - Bearing (Pump End) (50 Hz.) (AM-12 Only)	1
	B-118070-1	Plug (Not Shown) (Use with items #38, 39, 40 & 41)	1

*1 Phase.

**3 Phase.

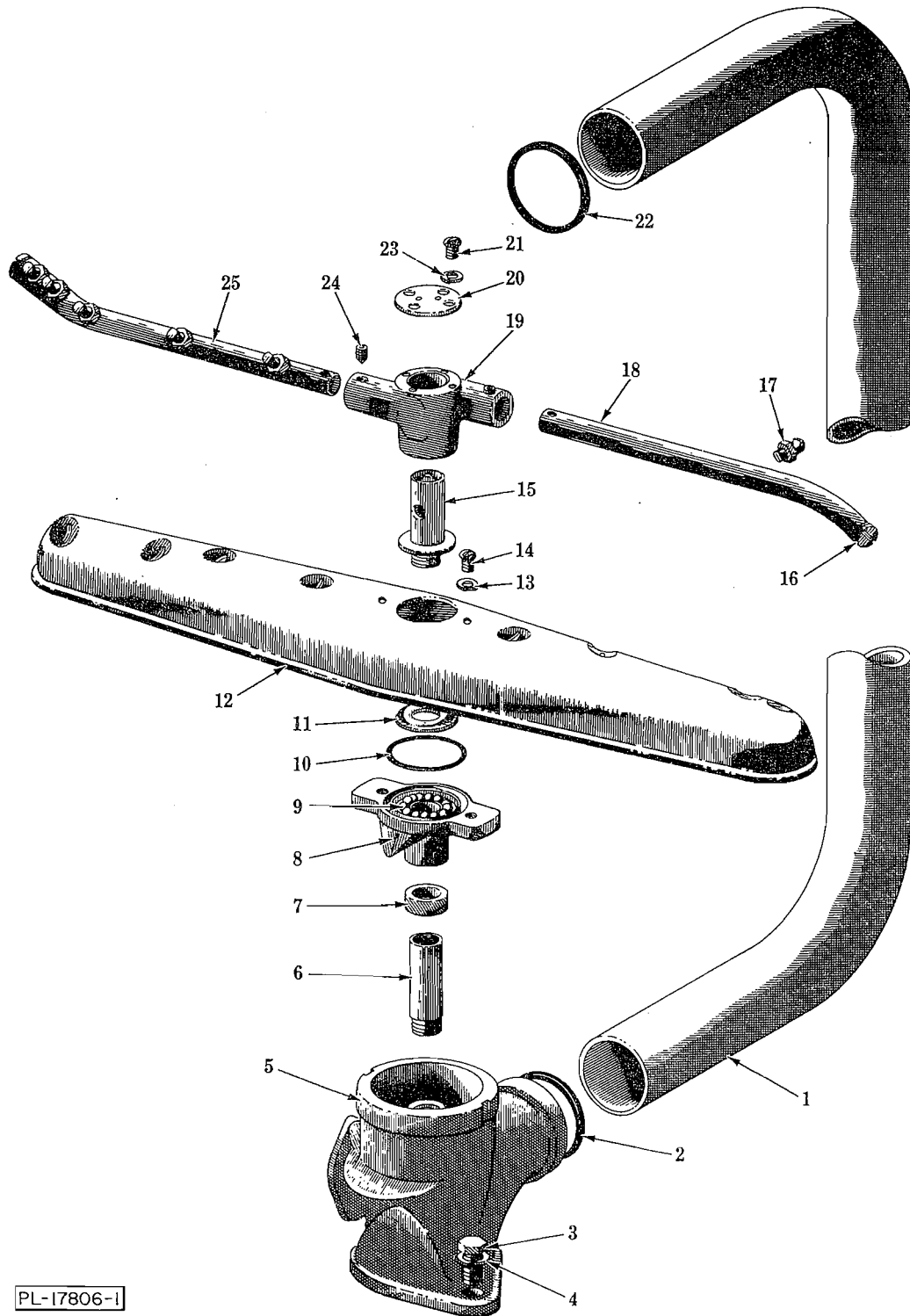


PL-16196

LOWER WASH ARM UNIT

**LOWER WASH ARM UNIT
(THRUST WASHER TYPE)**

ILLUS. PL-16196	PART NO.	NAME OF PART	AMT.
1	D-119032	Tube - Wash	1
2	D-67500-57	"O" Ring	1
3	SC-41-30	Cap Screw - 3/8"-16 x 1" Hex Hd	2
4	WL-6-28	Lock Washer - 3/8" Medium	2
5	E-118973-2	Tee - Lower Wash	1
6	B-119034	Shaft - Lower Wash Arm	1
7	B-119229	Spring - Compression	1
8	C-119222	Hub Assy	1
9	B-119227	Washer - Thrust	1
10	D-119198	Wash Arm & Hub Assy. (Incls. items #8, 9, 11 & 12)	1
11	WL-6-7	Lock Washer - #10 Medium	2
12	SC-21-21	Mach. Screw - #10-24 x 1/4" Rd. Hd	2
13	M-24160	Rinse Arm Bearing Pin & Thrust Washer Assy	1
14	M-22731-3	Nozzle - Rinse	9
15	M-74046	Plug - Rinse Arm	2
16	R-89159	Arm - Inside Rinse	1
17	C-119087	Rinse Arm Body Assy. (Incls. item #18)	1
18	M-21110	Bearing - Rinse Arm	2
19	V-21137	Plate - Pivot Bearing	1
20	SC-21-14	Mach. Screw - #8-32 x 3/8" Rd. Hd	4
21	D-67500-57	"O" Ring	1
22	WL-6-1	Lock Washer - #8 Light	4
23	SC-50-26	Set Screw - #10-24 x 3/8" Sq. Hd., Cup Pt	2
24	R-89158	Arm - Outside Rinse	1
	C-119113	Lower Rinse Arm Assy. (Incls. items #14 thru 20, 22, 23 & 24)	1

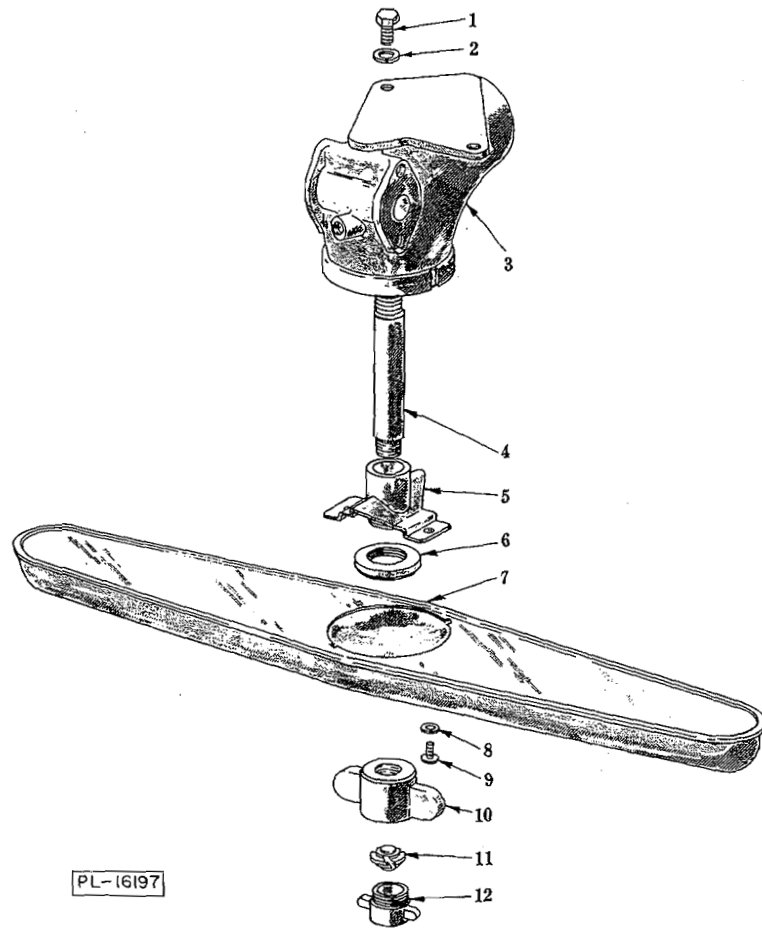


PL-17806-1

LOWER WASH ARM UNIT

**LOWER WASH ARM UNIT
(BALL BEARING TYPE)**

ILLUS. PL-17806-1	PART NO.	NAME OF PART	AMT.
1	D-119032	Tube - Wash	1
2	D-67500-57	"O" Ring	1
3	SC-41-30	Cap Screw - 3/8"-16 x 1" Hex Hd	2
4	WL-6-28	Lock Washer - 3/8" Medium	2
5	E-118973-2	Tee - Lower Wash	1
6	B-119034	Shaft - Lower Wash Arm	1
7	B-286944	Spacer	1
8	D-286948	Hub	1
9	BA-2-40	Ball - 1/4" Dia	13
10	D-67500-19	"O" Ring	1
11	C-286947	Retainer - Ball	1
12	D-287987	Wash Arm & Hub Assy. (Incls. items #8, 9, 10, 11, 13 & 14)	1
13	WL-6-7	Lock Washer - #10 Medium	2
14	SC-21-23	Mach. Screw - #10-24 x 1/2" Rd. Hd	2
15	B-286946	Bearing Pin & Washer Assy	1
16	B-122440	Pug - Rinse Arm	2
17	M-22731-3	Nozzle - Rinse	9
18	C-122443-2	Arm - Rinse (4 Nozzle Holes)	1
19	D-122633	Body - Lower Rinse Arm	1
20	V-21137	Plate - Pivot Bearing	1
21	SC-21-14	Mach. Screw - #8-32 x 3/8" Rd. Hd	4
22	D-67500-57	"O" Ring	1
23	WL-6-1	Lock Washer - #8 Light	4
24	SC-110-44	Set Screw - 5/16"-18 x 3/8" Soc. Hdls., Cone Pt	2
25	C-122442-2	Arm - Rinse (5 Nozzle Holes)	1
	D-122635-2	Lower Rinse Arm Assy. (Incls. items #16 thru 21, 23, 24 & 25)	1

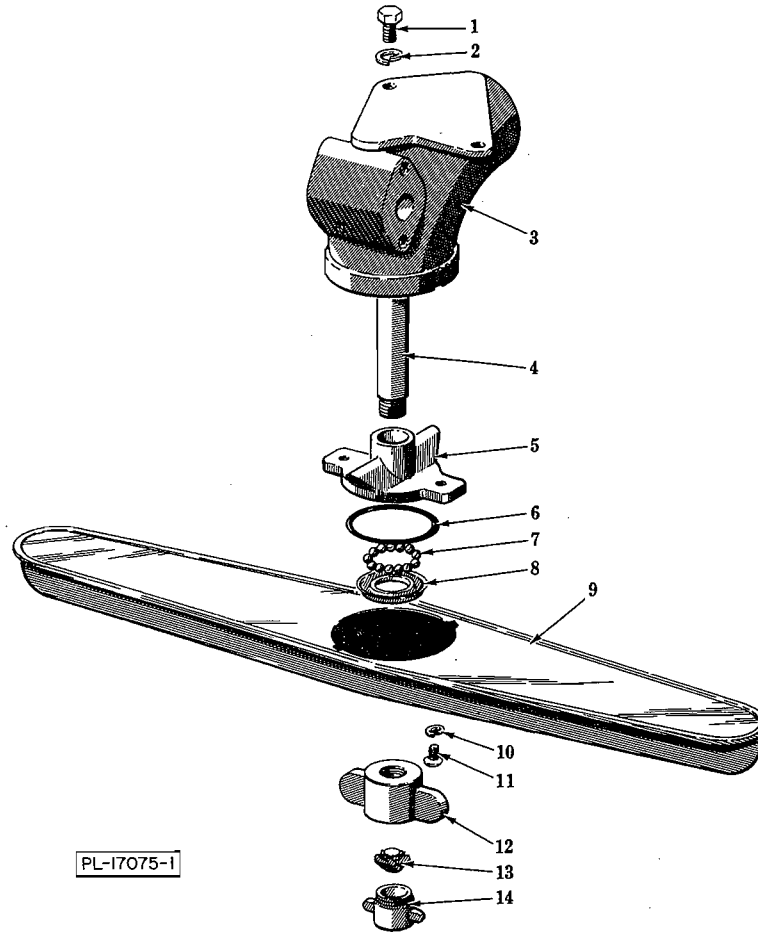


PL-16197

UPPER WASH ARM UNIT
(THRUST WASHER TYPE)

UPPER WASH ARM UNIT
(THRUST WASHER TYPE)

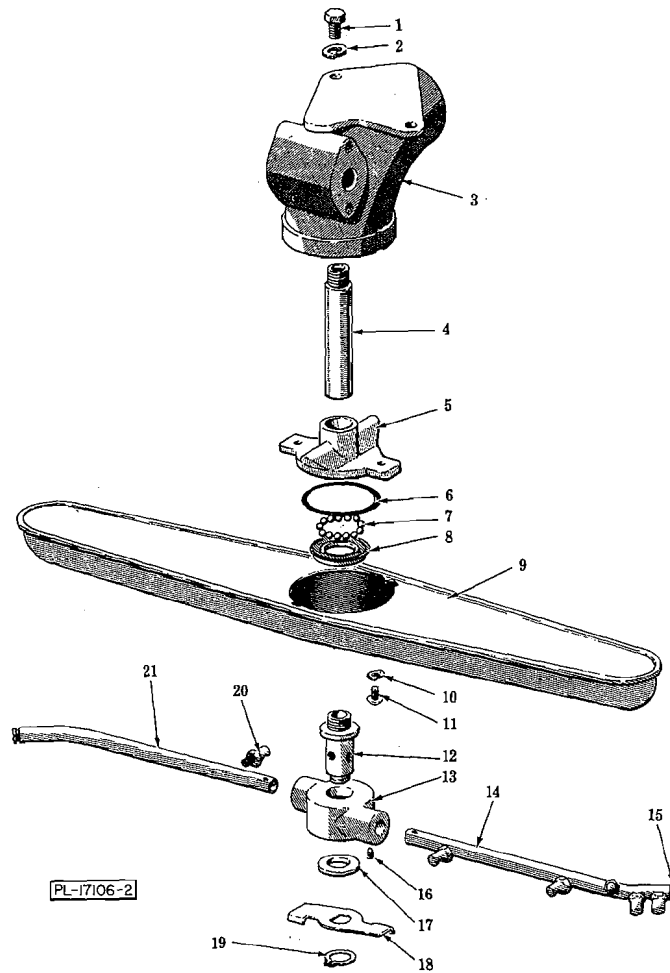
ILLUS. PL-16197	PART NO.	NAME OF PART	AMT.
1	SC-41-9	Cap Screw - 5/16"-18 x 1/2" Hex Hd	2
2	WL-6-22	Lock Washer - 5/16" Light	2
3	E-118972-2	Ell - Upper Wash	1
4	C-119033	Shaft - Upper Wash Arm	1
5	C-119222	Hub Assy	1
6	B-119227	Washer - Thrust	1
7	D-119198	Wash Arm & Hub Assy. (Incls. items #5, 6, 8 & 9)	1
8	WL-6-7	Lock Washer - #10 Medium	2
9	SC-21-21	Mach. Screw - #10-24 x 1/4" Rd. Hd	2
10	C-118978	Nut - Wash Arm	1
11	R-14524	Core - Rinse Nozzle	1
12	P-103952	Top - Rinse Nozzle	1



PL-17075-1

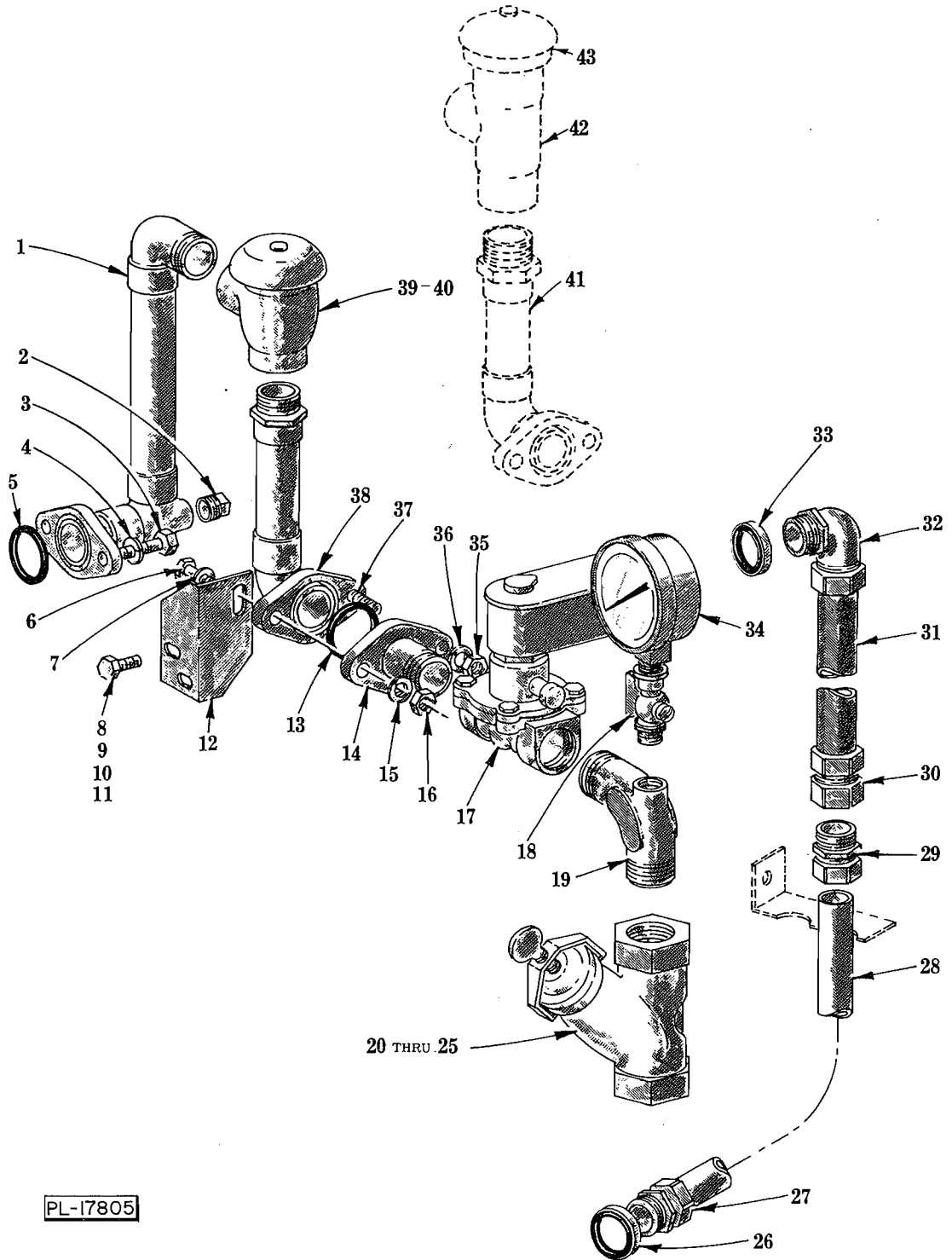
**UPPER WASH ARM UNIT
(BALL BEARING TYPE)
(WITH STATIONARY RINSE)**

ILLUS. PL-17075-1	PART NO.	NAME OF PART	AMT.
1	SC-41-9	Cap Screw - 5/16"-18 x 1/2" Hex Hd	2
2	WL-6-22	Lock Washer - 5/16" Light	2
3	E-118972-2	Ell - Upper Wash	1
4	C-119033	Shaft - Upper Wash Arm	1
5	D-286948	Hub	1
6	D-67500-19	"O" Ring	1
7	BA-2-40	Ball - 1/4" Dia	13
8	C-286947	Retainer - Ball	1
9	D-286943	Washer Arm & Hub Assy. (Incls. itmes #5, 6, 7, 8, 10 & 11)	1
10	WL-6-7	Lock Washer - #10 Medium	2
11	SC-21-23	Mach. Screw - #10-24 x 1/2" Rd. Hd	2
12	C-118978	Nut - Wash Arm	1
13	R-14524	Core - Rinse Nozzle	1
14	P-103952	Top - Rinse Nozzle	1



**UPPER WASH ARM UNIT
(BALL BEARING TYPE)
(WITH ROTATING RINSE)**

ILLUS.	PART	NAME OF PART	AMT.
PL-17106-2			
1	SC-41-9	Cap Screw - 5/16"-18 x 1/2" Hex Hd	2
2	WL-6-22	Lock Washer - 5/16" Light	2
3	E-118972-2	Ell - Upper Wash	1
4	B-122437	Shaft - Upper Wash Arm	1
5	D-286948	Hub	1
6	D-67500-19	"O" Ring	1
7	BA-2-40	Ball - 1/4" Dia	13
8	C-286947	Retainer - Ball	1
9	D-287987	Washer Arm & Hub Assy. (Incls. items #5, 6, 7, 8, 10 & 11)	1
10	WL-6-7	Lock Washer - #10 Medium	2
11	SC-21-23	Mach. Screw - #10-24 x 1/2" Rd. Hd	2
12	B-122438	Upper Rinse Shaft Assy	1
13	D-122401	Hub - Rinse Arm	1
14	C-287908	Arm - Outside Rinse (5 Nozzle Holes)	1
15	B-122440	Plug - Rinse Arm	2
16	SC-110-44	Set Screw - 5/16"-18 x 3/8" Soc. Hdls., Cone Pt. "Nylok"	2
17	B-122632	Washer - Thrust	1
18	C-122445	Handle	1
19	RR-11-3	Retaining Ring	1
20	M-22731-3	Nozzle - Rinse	11
21	C-287913	Arm - Inside Rinse (6 Nozzle Holes)	1
	C-287932-2	Rinse Arm Assy. (Incls. items #12 thru 21)	1



PL-17805

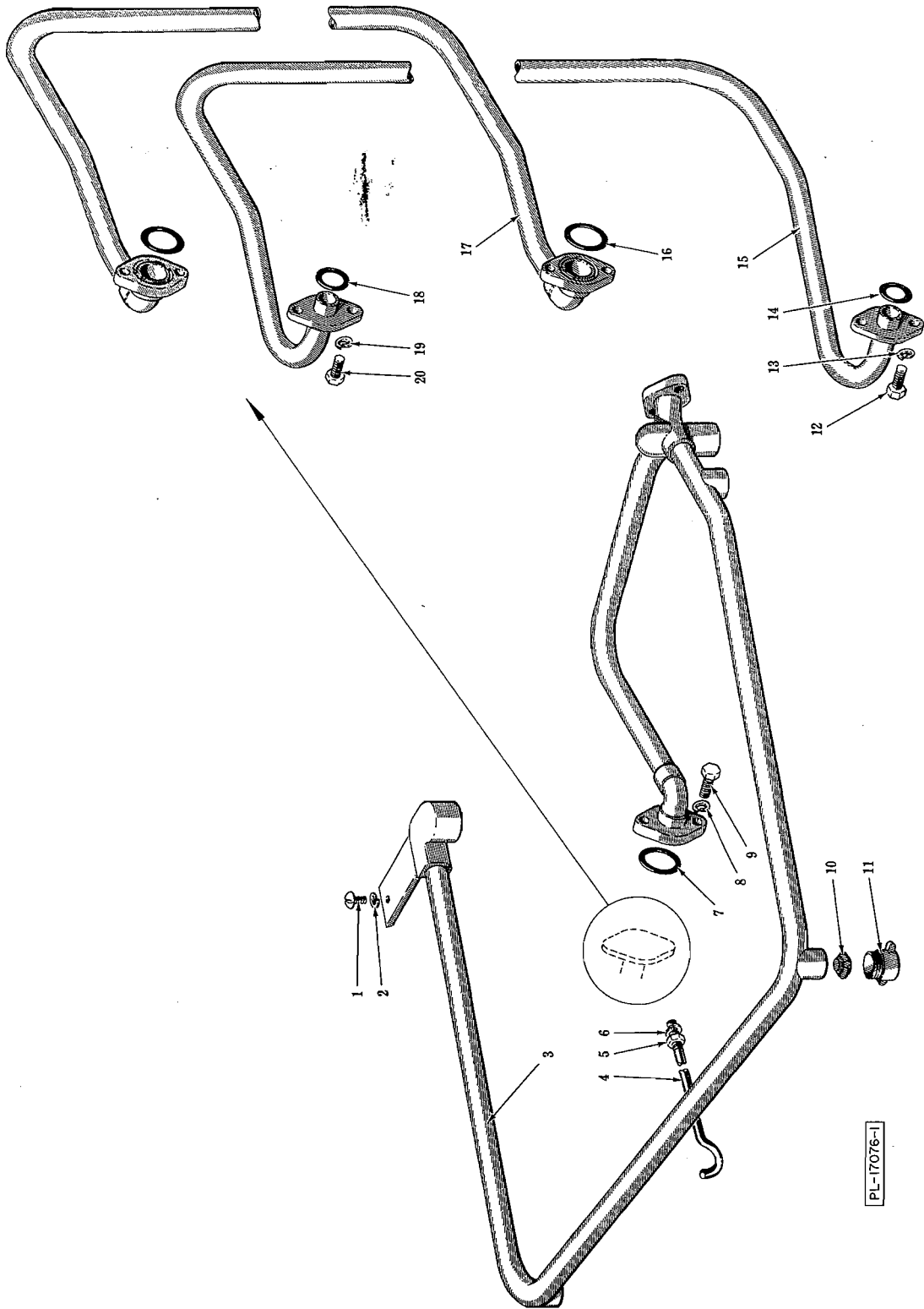
OUTSIDE RINSE PIPING UNIT

OUTSIDE RINSE PIPING UNIT

ILLUS. PL-17805	PART NO.	NAME OF PART	AMT.
1	C-119290	Connector Assy. (Rinse to Vacuum Breaker)	1
2	A-119127	Plug - 1/8" Sq. Hd. Pipe	1
3	SC-41-13	Cap Screw - 5/16"-18 x 1" Hex Hd	2
4	WL-6-22	Lock Washer - 5/16" Light	2
5	D-67500-12	"O" Ring	1
6	SC-41-16	Cap Screw - 5/16"-18 x 1-3/8" Hex Hd	1
7	WS-17-8	Washer	1
8	SC-41-5	Cap Screw - 1/4"-20 x 5/8" Hex Hd	2
9	WS-3-48	Washer	2
10	WL-6-17	Lock Washer - 1/4" Medium	2
11	NS-15-1	Full Nut - 1/4"-20 Hex Fin	2
12	D-119292	Bracket - Outside Rinse Piping	1
13	D-67500-12	"O" Ring	1
14	P-63262-26	Flange & Nipple Assy	1
15	WL-6-22	Lock Washer - 5/16" Light	1
16	NS-15-11	Full Nut - 5/16"-18 Hex Fin	1
17	A-106468-5	Solenoid Valve - 3/4" (115 V., 50/60 Hz.)	1
18	P-86218	Pet Cock - 1/4"	1
19	C-119066	Tee	1
20	A-102516	Line Strainer (3/4") (Incls. items #21, 22, 23, 24 & 25)	1
21	M-82231	Screen (3/4" Line Strainer)	1
22	A-102517	Plate - Seal (3/4" Line Strainer)	1
23	M-82236	Clamp (3/4" Line Strainer)	1
24	M-82238	Thumb Screw	1
25	D-67500-59	"O" Ring (3/4" Line Strainer)	1
26	FE-8-10	1/2" Gasket Assy	1
27	FE-6-45	Connector - Straight (1/2" Male Thd. x 1/2" Thinwall)	1
28	D-119004-2	Conduit - 1/2" (Low Water Protection Box to Coupling)	1
29	FE-6-45	Connector - Straight (1/2" Male Thd. x 1/2" Thinwall)	1
30	FE-7-6	Connector - Straight "Sealtite" (1/2" Female Thd. x 3/8" Flex. Cnd.)	1
31	P-68190-68	Conduit - 3/8" x 25" (Waterproof)	1
32	FE-7-3	Connector - 90° "Sealtite" (1/2" Male Thd. x 3/8" Flex. Cnd.)	1
33	FE-8-10	1/2" Gasket Assy	1
34	C-277915	Gauge - Water Pressure	1
35	NS-15-11	Full Nut - 5/16"-18 Hex Fin	1
36	WL-6-22	Lock Washer - 5/16" Light	1
37	SC-41-15	Cap Screw - 5/16"-18 x 1-1/4" Hex Hd	1
**38	C-276678	Connector Assy. (Vacuum Breaker to Solenoid)	1
**39	B-277112	Vacuum Breaker - 3/4" (Incls. item #40)	1
**40	B-118270	Float Assy. & Bonnet Gasket Service Kit (Vacuum Breaker)	1
*41	C-119291	Connector Assy. (Vacuum Breaker to Solenoid)	1
*42	M-74338	Vacuum Breaker - 3/4" (Incls. item #43)	1
*43	A-104729	Cap - Vacuum Breaker	1
	*M-74343	Vacuum Breaker Float & Seal Assy	1
	B-112062-1	Coil - Solenoid (115 V.)	1

*Use with SLOAN Vacuum Breaker.

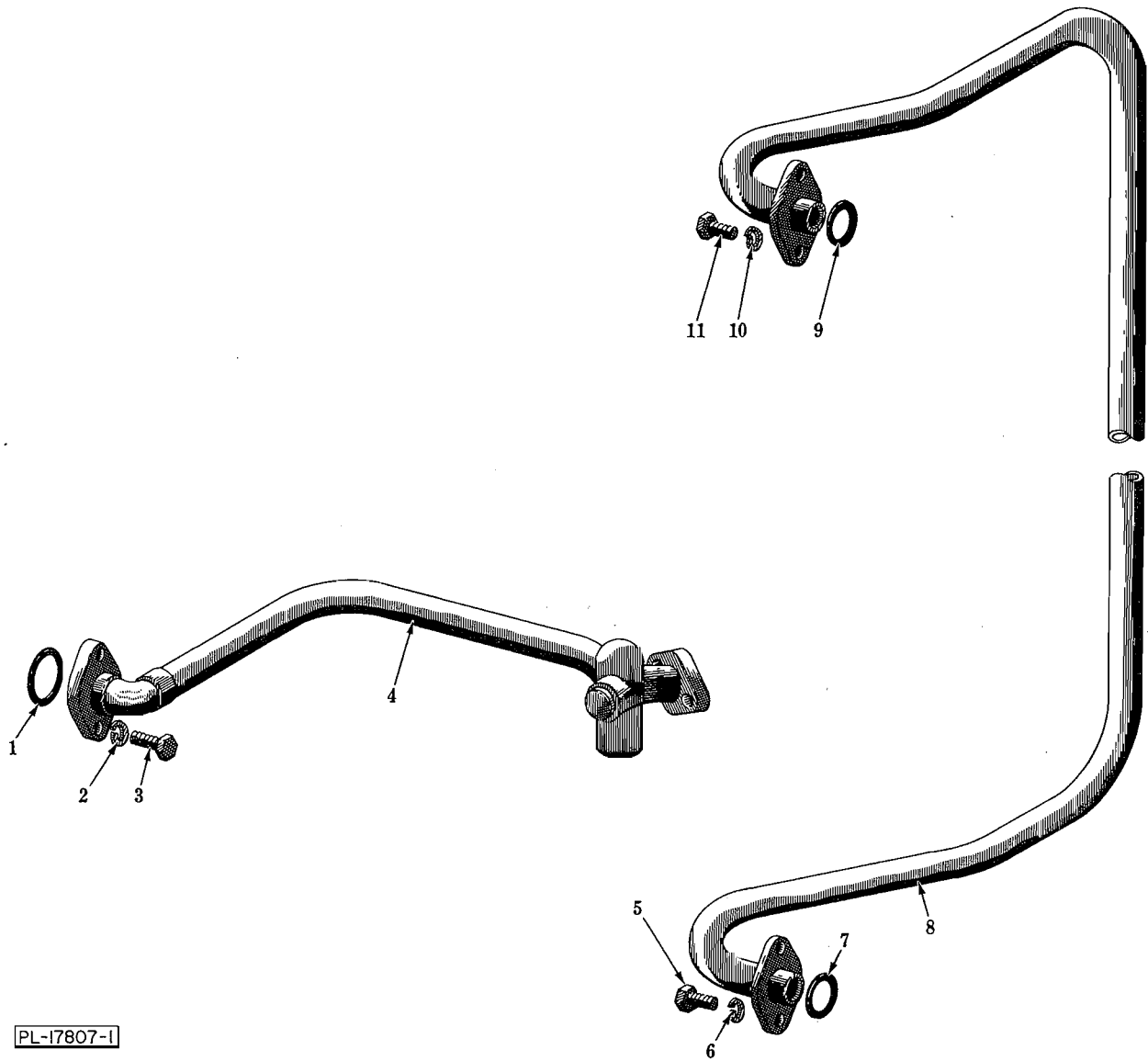
**Use with WATTS Vacuum Breaker.



INSIDE RINSE PIPING UNIT

INSIDE RINSE PIPING UNIT

ILLUS. PL-17076-1	PART NO.	NAME OF PART	AMT.
1	SC-21-22	Mach. Screw - #10-24 x 3/8" Rd. Hd	1
2	WL-6-7	Lock Washer - #10 Medium	1
3	E-118994	Upper Rinse Pipe Assy	1
4	C-119070	Support - Upper Rinse Pipe	1
5	NS-15-11	Full Nut - 5/16"-18 Hex Fin	1
6	WL-6-22	Lock Washer - 5/16" Light	1
7	D-67500-12	"O" Ring	1
8	WL-6-22	Lock Washer - 5/16" Light	2
9	SC-41-10	Cap Screw - 5/16"-18 x 5/8" Hex Hd	2
10	R-14524	Core - Rinse Nozzle	4
11	P-103952	Top - Rinse Nozzle	4
12	SC-41-10	Cap - Screw - 5/16"-18 x 5/8" Hex Hd	2
13	WL-6-22	Lock Washer - 5/16" Light	2
14	D-67500-9	"O" Ring	1
15	D-276834	Rinse Connector & Flange Assy	1
16	D-67500-12	"O" Ring	2
17	C-118995-1	Rinse Connector Assy	1
18	D-67500-9	"O" Ring	1
19	WL-6-22	Lock Washer - 5/16" Light	2
20	SC-41-10	Cap Screw - 5/16"-18 x 5/8" Hex Hd	2

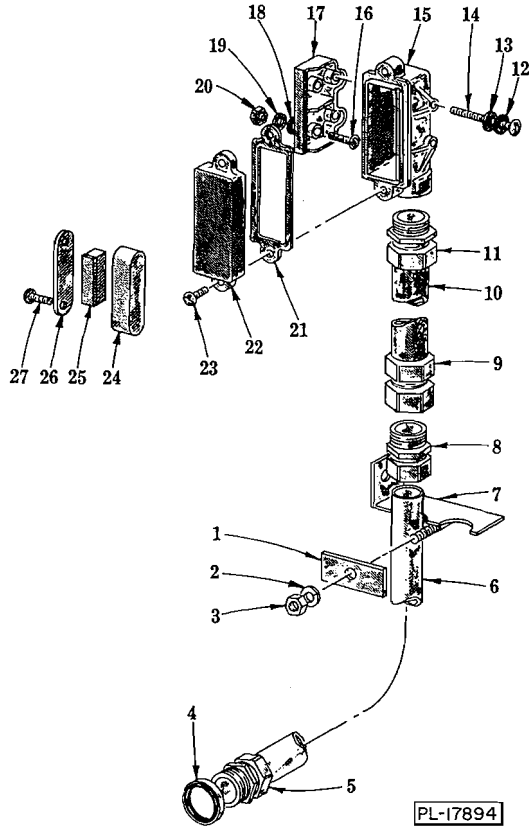


PL-I7807-1

INSIDE RINSE PIPING UNIT

**INSIDE RINSE PIPING UNIT
(LOW WATER CONSUMPTION)**

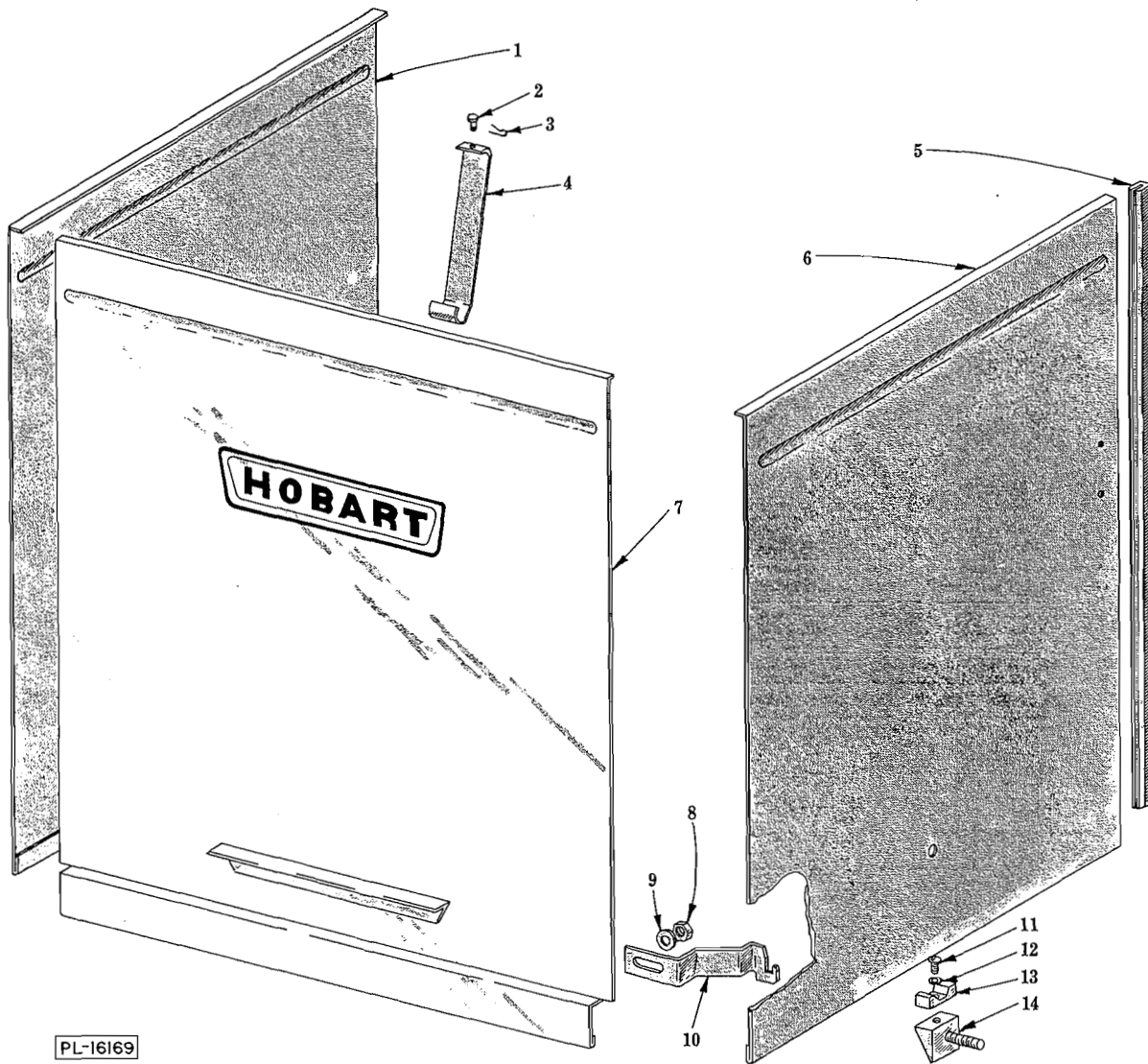
ILLUS. PL-17807-1 NO.	PART NO.	NAME OF PART	AMT.
1	D-67500-12	"O" Ring	1
2	WL-6-22	Lock Washer - 5/16" Light	2
3	SC-41-10	Cap Screw - 5/16"-18 x 5/8" Hex Hd	2
4	D-287947	Upper Rinse Pipe Assy	1
5	SC-41-9	Cap Screw - 5/16"-18 x 1/2" Hex Hd	2
6	WL-6-22	Lock Washer - 5/16" Light	2
7	D-67500-9	"O" Ring	1
8	D-276834	Rinse Connector & Flange Assy	1
9	D-67500-9	"O" Ring	1
10	WL-6-22	Lock Washer - 5/16" Light	2
11	SC-41-9	Cap Screw - 5/16"-18 x 1/2" Hex Hd	2



DOOR INTERLOCK UNIT

DOOR INTERLOCK UNIT

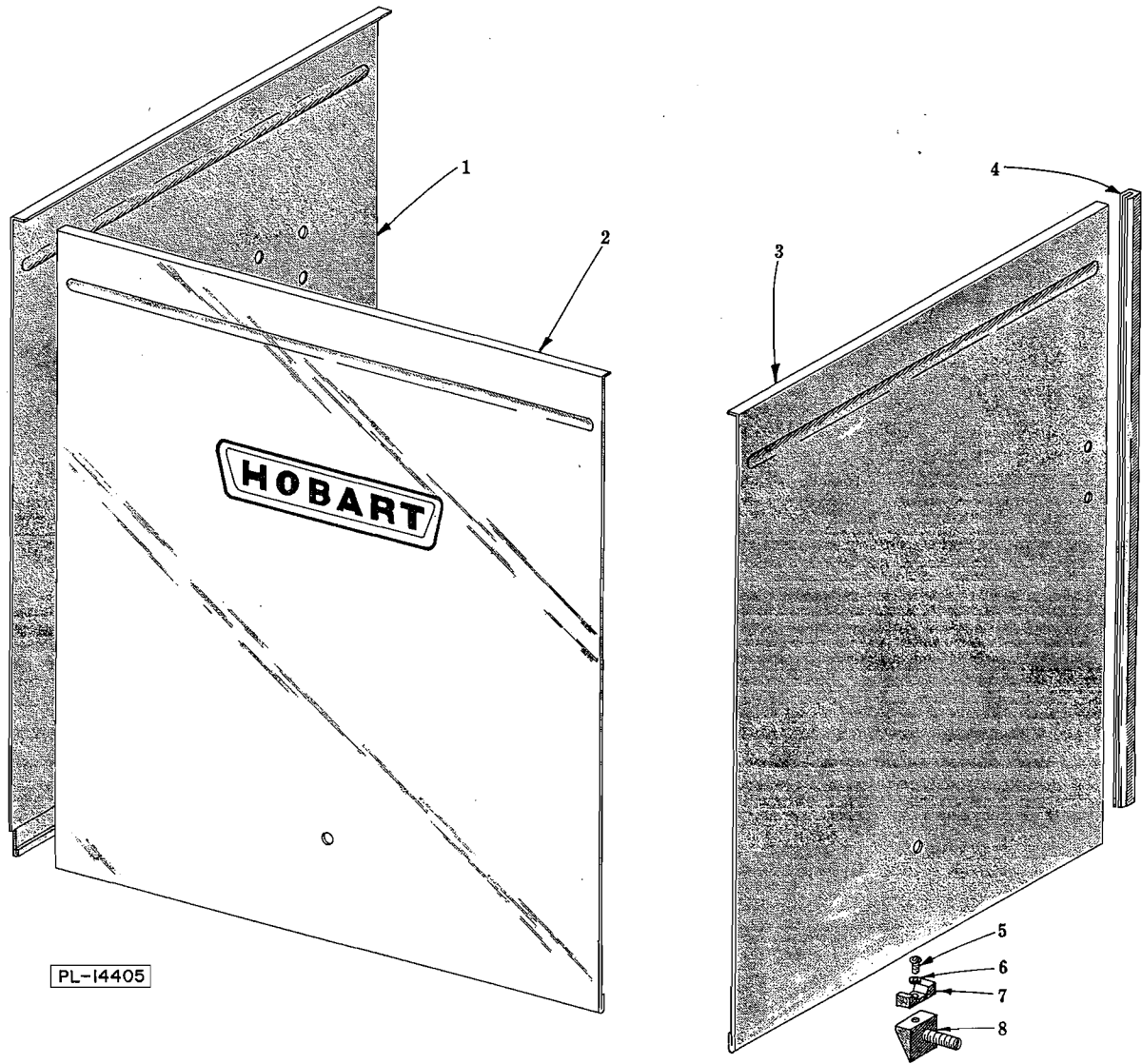
ILLUS. PL-17894	PART NO.	NAME OF PART	AMT.
1	B-119062	Retainer - Conduit	1
2	WL-6-17	Lock Washer - 1/4" Medium	1
3	NS-15-1	Full Nut - 1/4"-20 Hex Fin	1
4	FE-8-10	1/2" Gasket Assy	1
5	FE-6-45	Connector - Straight (1/2" Male Thd. x 1/2" Thinwall)	1
6	D-119004-1	Conduit - 1/2" Thinwall (Heat Box to Coupling)	1
7	B-119065-1	Bracket - Conduit	1
8	FE-6-45	Connector - Straight (1/2" Male Thd. x 1/2" Thinwall)	1
9	FE-7-6	Connector - Straight "Sealtite" (1/2" Male Thd. x 3/8" Flex. Cnd.)	1
10	P-68190-5	Conduit - 3/8" x 11" (Waterproof)	1
11	FE-7-1	Connector - Straight "Sealtite" (1/2" Male Thd. x 3/8" Flex. Cnd.)	1
12	WL-6-7	Lock Washer - #10 Medium	2
13	WS-19-6	Washer	2
14	SC-21-34	Mach. Screw - #10-32 x 1-3/4" Rd. Hd	2
15	D-288490	Housing - Interlock Switch	1
16	SC-21-25	Mach. Screw - #10-24 x 3/4" Rd. Hd	2
17	B-288455	Spacer & Insert Assy	1
18	WS-29-10	Washer	2
19	WL-6-7	Lock Washer - #10 Medium	2
20	NS-11-18	Mach. Nut - #10-24 Hex	2
21	B-106803	Gasket - Interlock Switch	1
22	B-288456	Interlock Switch & Cover Assy	1
23	SD-25-12	Self-Tapping Screw - #8-18 x 1/2" Phil. Pan Hd. "Shakeproof"	2
24	B-119075	Retainer - Magnet	1
25	C-119057	Magnet - Door Interlock Switch	1
26	B-119300	Gasket - Magnet Retainer	1
27	SD-12-35	Self-Tapping Screw - #8-32 x 1/2" Phil. Pan Hd., Type 23	2



PL-16169

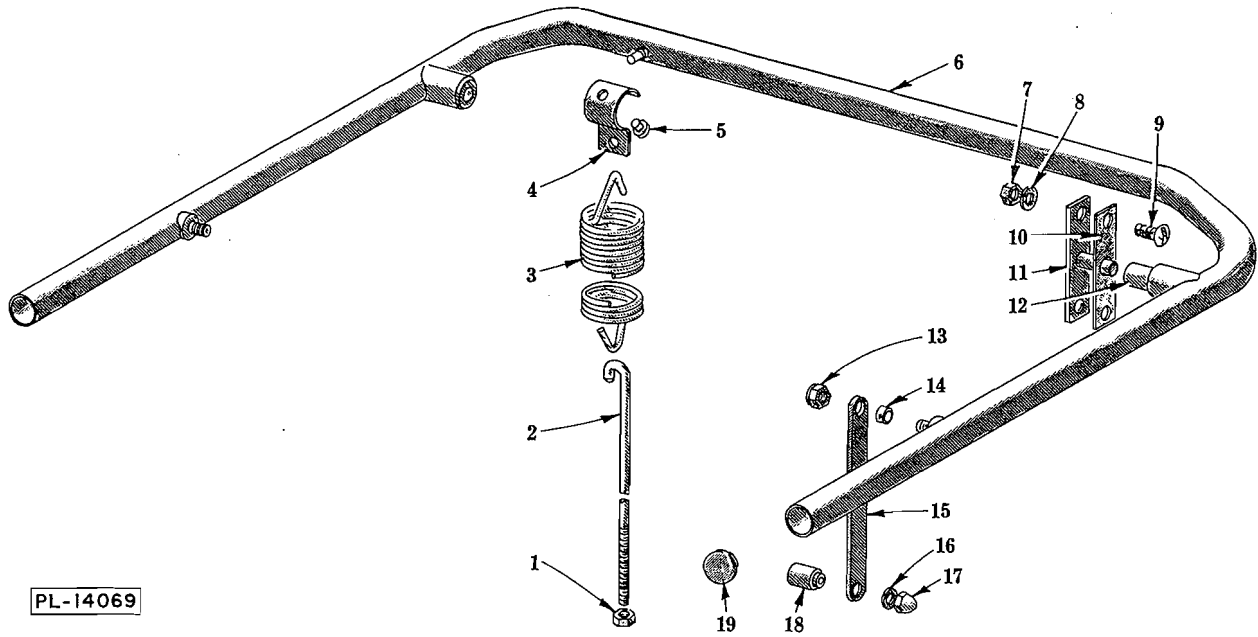
**DOOR UNIT
(STRAIGHT THRU INSTALLATION)**

ILLUS. PL-16169	PART NO.	NAME OF PART	AMT.
1	E-119006-2	Door - Counterbalanced (L.H.)	1
2	B-119103	Rivet - Flat Hd	1
3	PC-5-2	Cotter Pin - 1/16" x 1/2"	1
4	C-119236	Latch - Inspection Door	1
5	D-112378-23	Guide - Door	6
6	E-119006-1	Door - Counterbalanced (R.H.)	1
7	D-119133	Door & Lift Assy. (Non-Counterbalanced)	1
8	NS-18-6	Jam Nut - 5/16"-18 Hex Fin	2
9	WS-17-8	Washer	2
10	C-119168	Bracket - Door Lock	1
11	SC-21-23	Mach. Screw - #10-24 x 1/2" Rd. Hd	2
12	WL-6-7	Lock Washer - #10 Medium	2
13	C-119086	Bumper - Door Stop	2
14	B-119007	Door Stop Assy	2



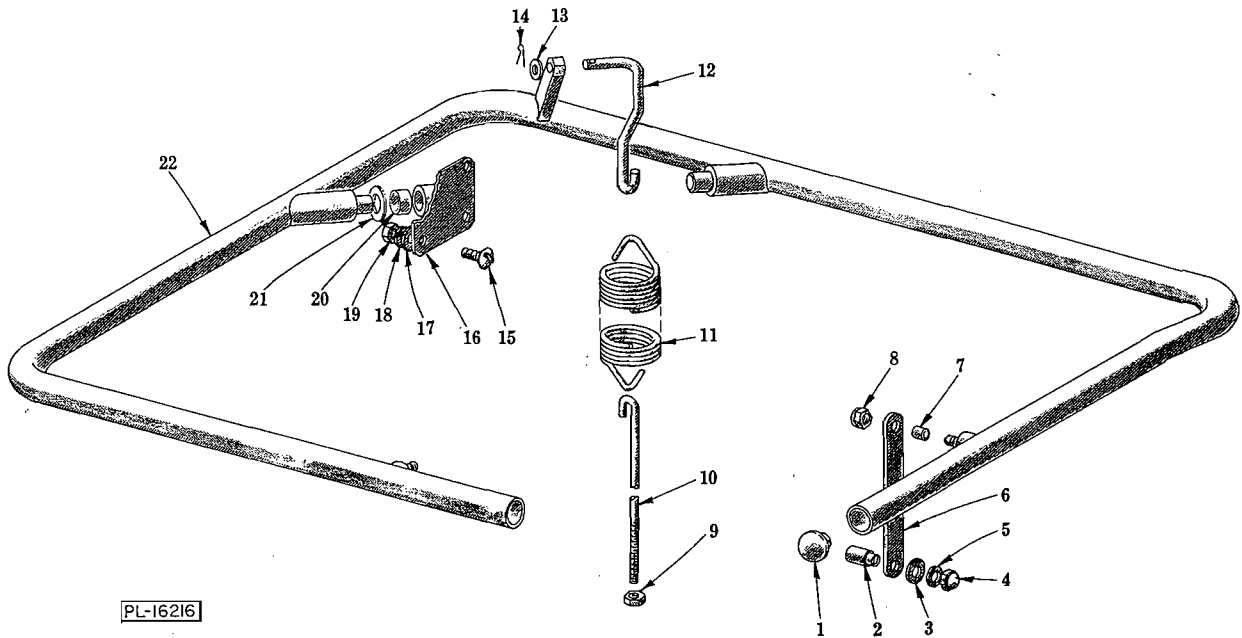
**DOOR UNIT
(CORNER INSTALLATION)**

ILLUS. PL-14405	PART NO.	NAME OF PART	AMT.
1	E-119005	Door - Inspection	1
2	E-119098	Door - Counterbalanced (Front)	1
3	E-119006-1	Door - Counterbalanced (R.H.)	1
4	D-112378-23	Guide - Door	6
5	SC-21-23	Mach. Screw - #10-24 x 1/2" Rd. Hd	2
6	WL-6-7	Lock Washer - #10 Medium	2
7	C-119086	Bumper - Door Stop	2
8	B-119007	Door Stop Assy	2



**DOOR LIFT UNIT
(STRAIGHT THRU INSTALLATION)**

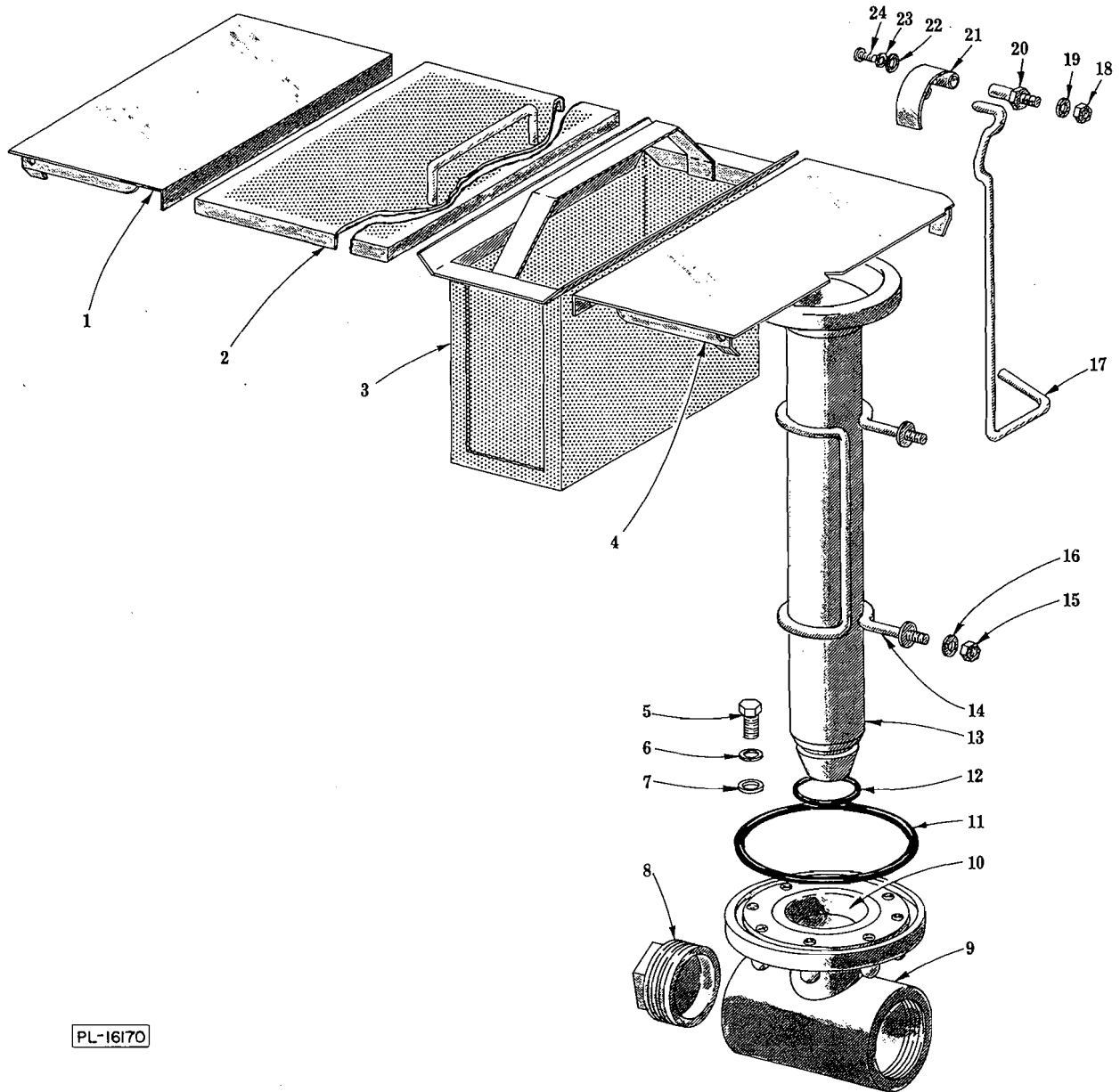
ILLUS. PL-14069	PART NO.	NAME OF PART	AMT.
1	NS-15-11	Full Nut - 5/16"-18 Hex Fin	2
2	C-119071	Hook - Spring	1
3	D-119079-1	Spring - Counterbalance	1
4	P-79008	Hanger - Spring	1
5	B-119055	Button - Bearing	2
6	E-119016	Door Lift Assy	1
7	NS-15-11	Full Nut - 5/16"-18 Hex Fin	4
8	WL-6-22	Lock Washer - 5/16" Light	4
9	SC-53-16	Mach. Screw - 5/16"-18 x 5/8" Truss Hd	4
10	B-119053	Gasket - Door Lift	2
11	B-119017	Bearing Bracket & Pin Assy	2
12	B-119104	Bushing - Door Lift Pin	2
13	NS-32-35	Stop Nut - 5/16"-18 "Flexloc"	2
14	M-74068	Spacer - Door Link	2
15	B-119011	Link - Door	2
16	WL-6-22	Lock Washer - 5/16" Light	2
17	NS-25-9	Acorn Nut - 5/16"-18	2
18	B-119012	Spacer - Door	2
19	B-119076	Plug - Handle	2



PL-16216

**DOOR LIFT UNIT
(CORNER INSTALLATION)**

ILLUS. PL-16216	PART NO.	NAME OF PART	AMT.
	1	B-119076 Plug - Handle	2
	2	B-119046 Pin - Door Lift	2
	3	WS-5-32 Washer	2
	4	NS-25-9 Acorn Nut - 5/16"-18	2
	5	WL-6-22 Lock Washer - 5/16" Light	2
	6	B-119042 Link - Door Lift	2
	7	B-119048 Spacer - Door Link	2
	8	NS-32-35 Stop Nut - 5/16"-18 "Flexloc"	2
	9	NS-15-11 Full Nut - 5/16"-18 Hex Fin	2
	10	C-119071 Hook - Spring (Lower)	1
	11	D-119079-2 Spring - Counterbalance	1
	12	B-119072 Hook - Spring (Upper)	1
	13	WS-17-8 Washer	1
	14	PC-5-11 Cotter Pin - 3/32" x 3/4"	1
	15	SC-53-16 Mach. Screw - 5/16"-18 x 5/8" Truss Hd	8
	16	B-119272 Pivot Assy	2
	17	WS-17-8 Washer	8
	18	WL-6-22 Lock Washer - 5/16" Light	8
	19	NS-15-11 Full Nut - 5/16"-18 Hex Fin	8
	20	M-74532 Bushing	2
	21	WS-10-42 Washer	AR
	22	E-119095 Door Lift Assy	1

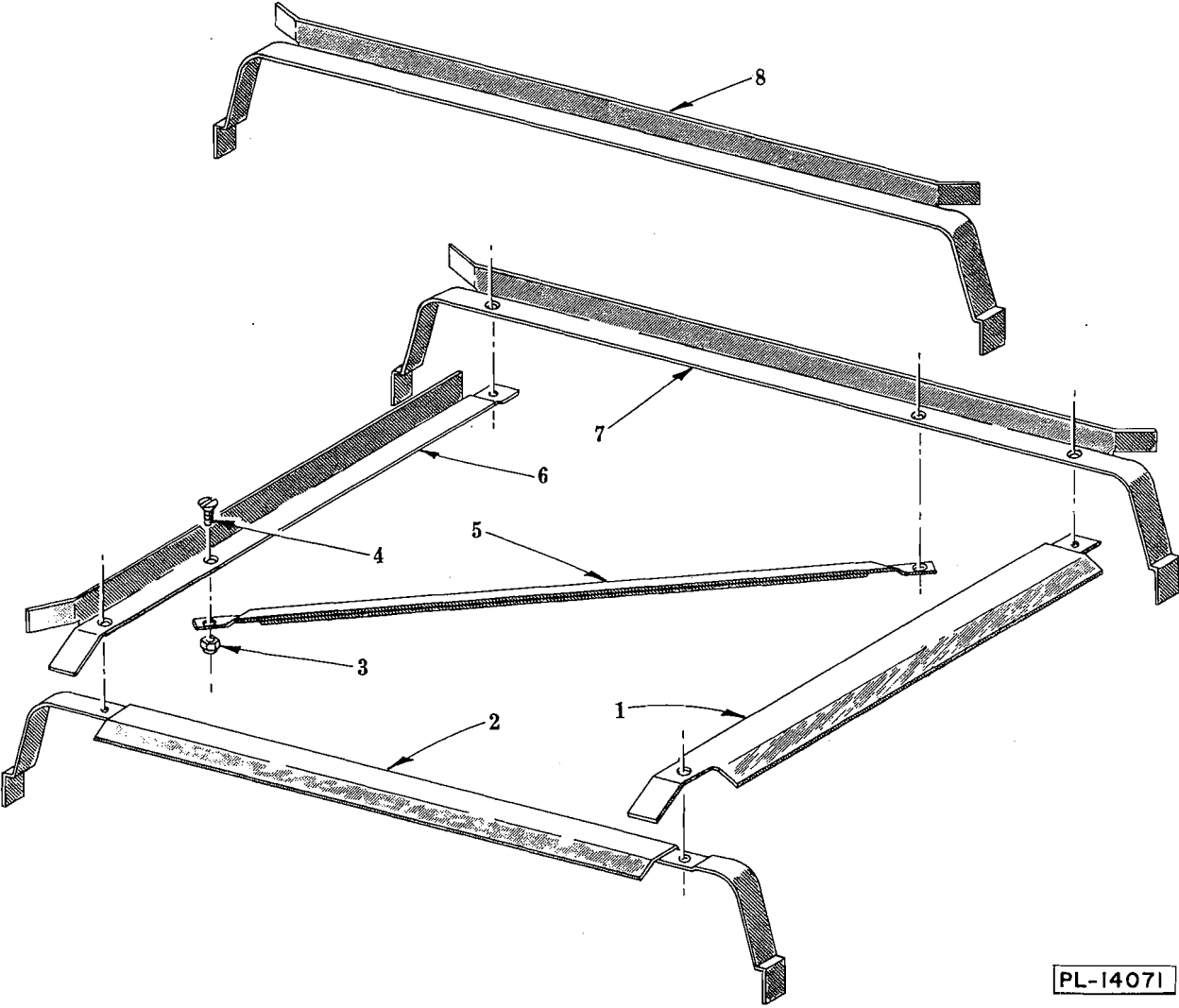


PL-16170

STRAINERS AND DRAIN UNIT

STRAINERS AND DRAIN UNIT

ILLUS. PL-16170	PART NO.	NAME OF PART	AMT.
1	D-118964	Sump Cover & Retainer	1
2	C-118967	Strainer - Slanted	1
3	D-118999	Strainer Basket Assy	1
4	D-119035	Overflow Cover Assy	1
5	SC-41-11	Cap Screw - 5/16"-18 x 3/4" Hex Hd	8
6	WL-6-22	Lock Washer - 5/16" Light	8
7	WS-17-8	Washer	8
8	FP-28-32	Plug - 2" Sq. Hd. Pipe	1
9	D-118976	Body - Drain Valve	1
10	C-119239	Sleeve - Drain Valve Body	1
11	D-67500-82	"O" Ring	1
12	D-67500-89	"O" Ring (Overflow Tube)	1
13	E-119099-1	Tube - Overflow	1
14	C-277025	Overflow Guide Assy	1
15	NS-18-1	Jam Nut - 1/4"-20 Hex Fin	2
16	WL-6-17	Lock Washer - 1/4" Medium	2
17	C-119119	Rod - Overflow Lift	1
18	NS-15-1	Full Nut - 1/4"-20 Hex Fin	1
19	WL-6-17	Lock Washer - 1/4" Medium	1
20	B-119116-1	Axle - Drain Lever	1
21	C-119121	Drain Lever Assy	1
22	WS-23-34	Washer	1
23	WL-6-7	Lock Washer - #10 Medium	1
24	SC-21-22	Mach. Screw - #10-24 x 3/8" Rd. Hd	1



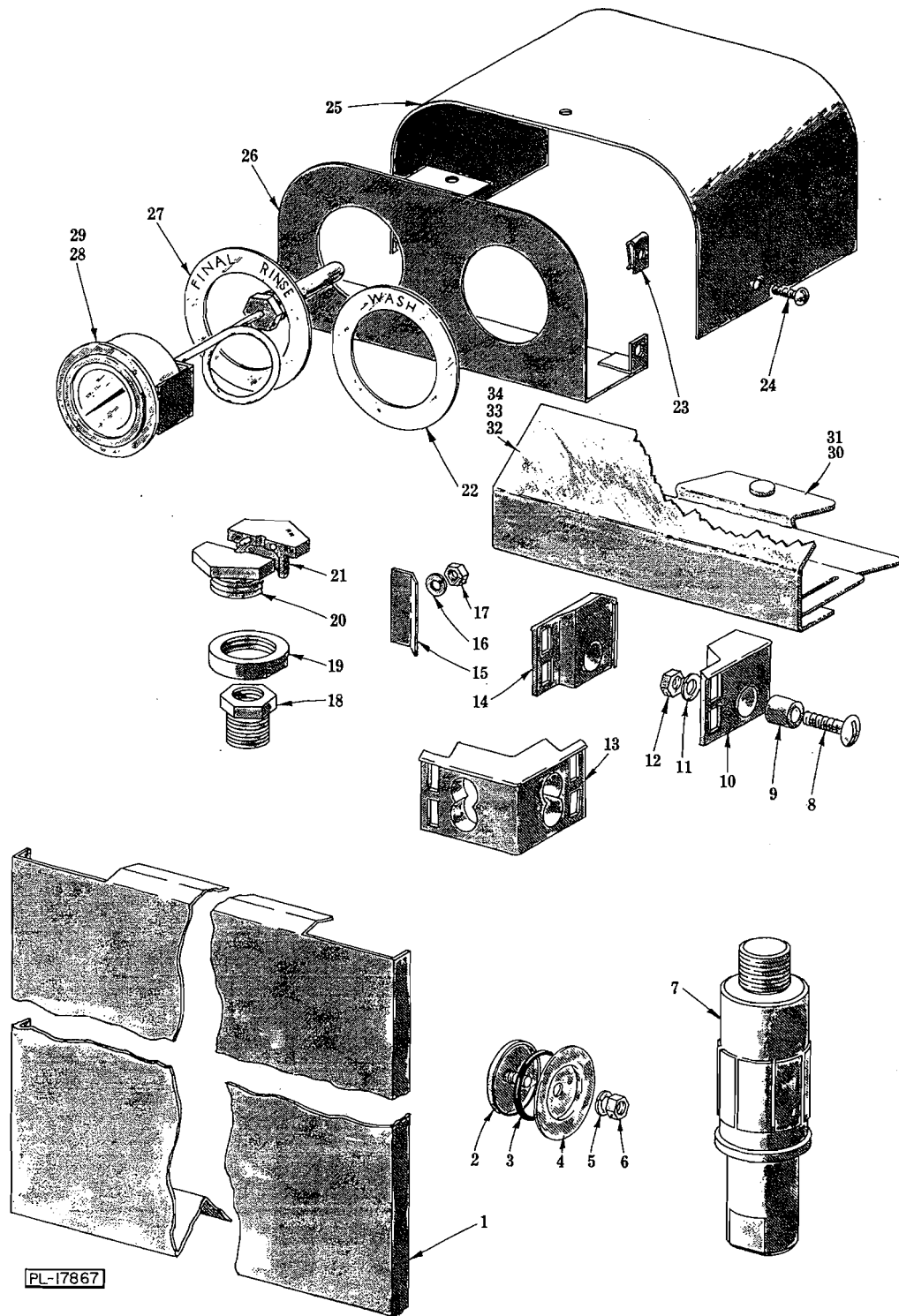
PL-14071

TRACK UNIT

TRACK UNIT

ILLUS. PL-14071	PART NO.	NAME OF PART	AMT.
*1	S-74528	Track - R.H. Rack	1
*2	E-119093	Track - Front Rack	1
*3	NS-36-5	Stop Nut - #12-24 "Elastic"	6
*4	SC-22-27	Mach. Screw - #12-24 x 5/8" Flat Hd	6
*5	D-119129	Support - Track	1
*6	S-74527	Track - L.H. Rack	1
*7	E-119080	Track - Rear Rack	1
**8	E-119084	Track - Rack	2

*Corner Installation.
 **Straight Thru Installation.



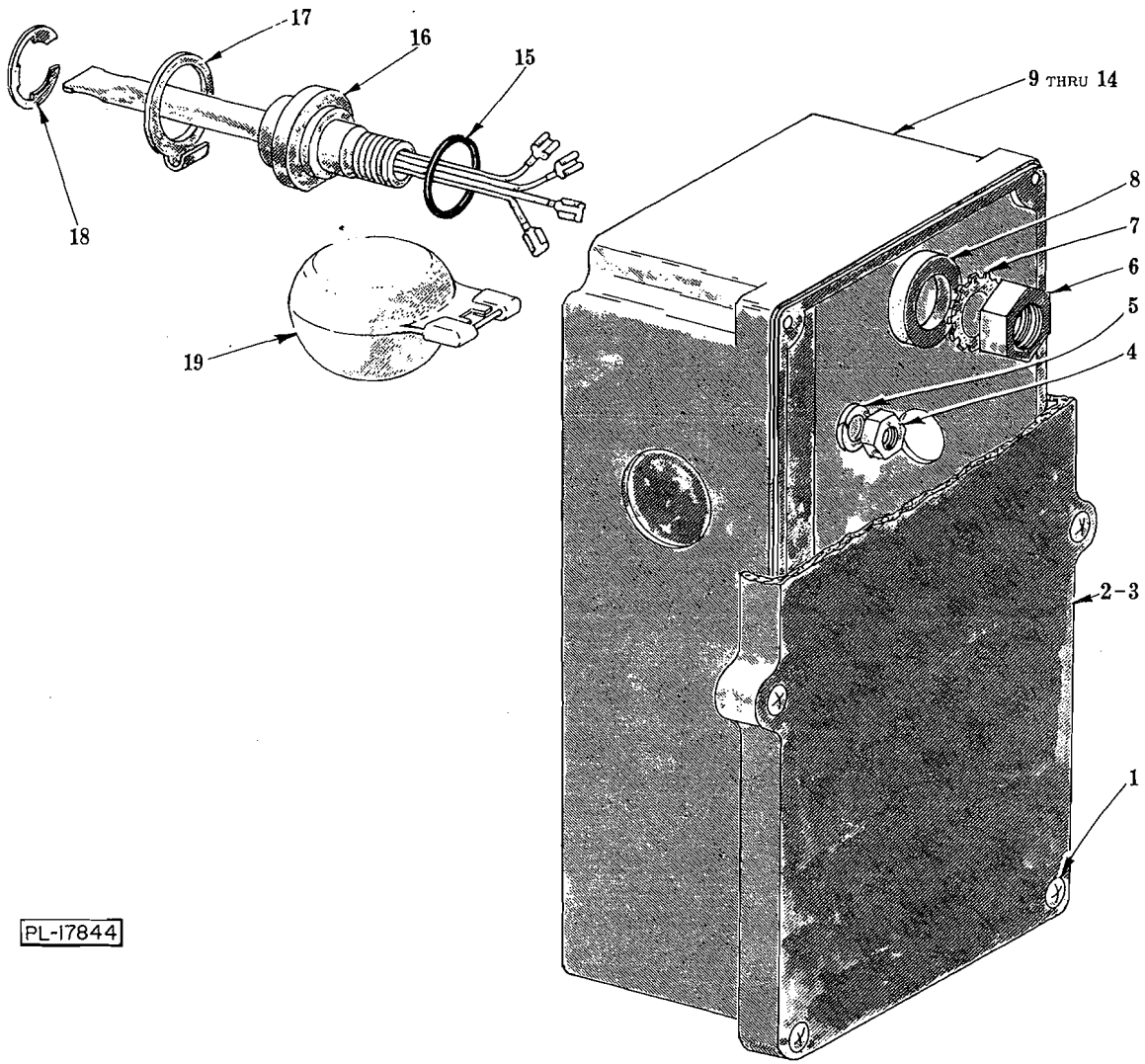
PL-17867

MISCELLANEOUS

MISCELLANEOUS

ILLUS. PL-17867	PART NO.	NAME OF PART	AMT.
*1	E-119183	Panel - Front	1
2	B-119244	Cap & Stud Assy	3
3	D-67500-31	"O" Ring	3
4	B-119254	Retainer - Cap	3
5	WL-6-17	Lock Washer - 1/4" Medium	3
6	NS-15-1	Full Nut - 1/4"-20 Hex Fin	3
7	A-119237	Adjusting Foot Assy	4
8	SC-53-20	Mach. Screw - 5/16"-18 x 1" Truss Hd	6
9	B-119047	Spacer - Tank & Chamber	6
10	C-119083	Insert - Tank Corner (R.H. Rear)	1
11	WL-6-22	Lock Washer - 5/16" Light	6
12	NS-15-11	Full Nut - 5/16"-18 Hex Fin	6
13	C-119081	Insert - Tank Corner (Front)	2
14	C-119082	Insert - Tank Corner (L.H. Rear)	1
15	A-119043	Guard - Capillary Tube	4
16	WL-6-7	Lock Washer - #10 Medium	4
17	NS-11-18	Mach. Nut - #10-24 Hex	4
18	A-107218	Coupling - Thermometer	1
19	A-103746	Nut (Capillary Retainer)	2
20	C-119139	Retainer - Cap. Tube (L.H.)	2
21	C-119137	Retainer - Cap. Tube (R.H.)	2
22	C-286684	Ring - Wash Identification	1
23	M-74348	Speed Nut - #10-24 Type "U"	3
24	SC-53-2	Mach. Screw - #10-24 x 1/2" Truss Hd	3
25	D-119041	Housing - Thermometer	1
26	C-119039	Thermometer Panel Assy	1
27	C-286687	Ring - Rinse Identification	1
28	D-276923-5	Thermometer - 3 Ft.	1
29	D-276923-6	Thermometer - 8 Ft.	1
30	B-288059	Baffle - Vent	1
31	B-288174	Bumper - Button	1
32	D-288192	Deflector - Vent	1
33	WL-6-17	Lock Washer - 1/4" Medium	2
34	NS-15-1	Full Nut - 1/4"-20 Hex Fin	2

*AM-12.

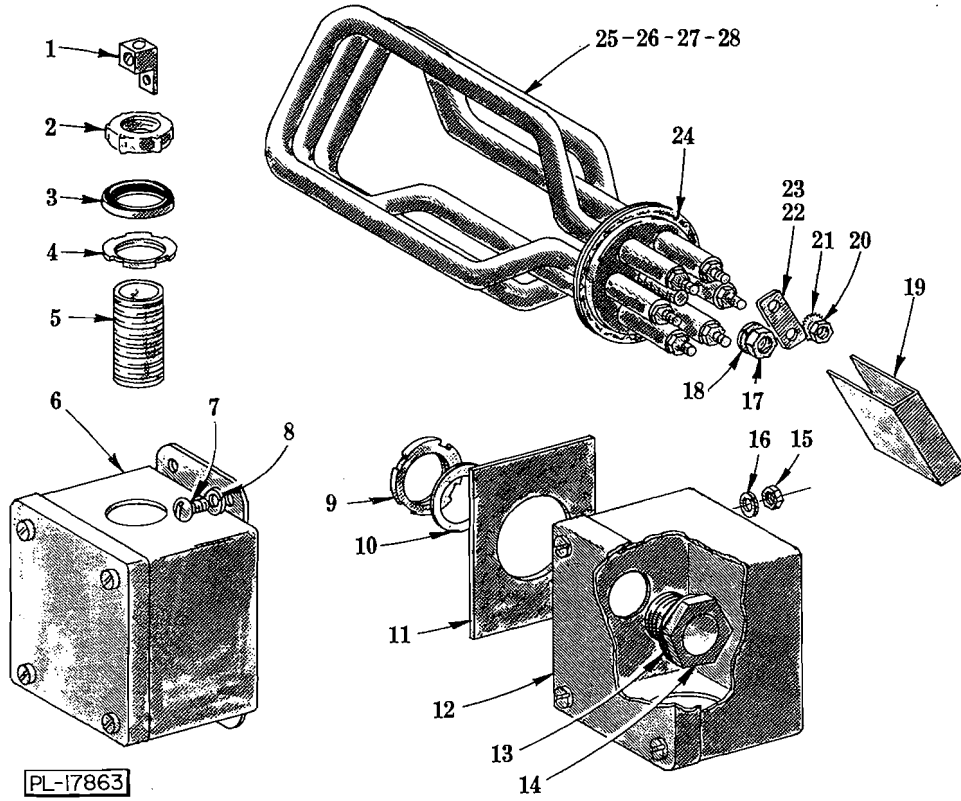


PL-17844

LOW WATER PROTECTION UNIT

LOW WATER PROTECTION UNIT

ILLUS. PL-17844	PART NO.	NAME OF PART	AMT.
1	SD-12-20	Self-Tapping Screw - #8-32 x 1/2" Phil. Truss Hd., Type 23	6
2	C-288466-2	Lid & Gasket Assy. (Incls. item #3)	1
3	C-112005	Gasket (Lid)	1
4	NS-15-1	Full Nut - 1/4"-20 Hex Fin	4
5	WL-6-17	Lock Washer - 1/4" Medium	4
6	NS-18-28	Jam Nut - 1/2"-20 Hex Fin	1
7	WL-14-31	Lock Washer - 1/2" Ext. Shakeproof	1
8	B-111944	Washer - Thrust	1
9	D-288468-2	Heat Box (Use with Steam & Gas Heat)	1
10	D-288485-1	Heat Box (Use with Elec. Heat) (110-120 V.)	1
11	D-288468-1	Heat Box (Use with Elec. Heat) (200 V. & Above)	1
12	B-119294	Clamp - Cable (Tie)	2
13	B-113420	Terminal - Male (Double) (200 V. & Above)	4
14	A-112146	Retainer - Terminal (200 V. & Above)	4
15	D-67500-72	"O" Ring	1
16	B-119270	Probe & Switch Assy.	1
17	C-112467	Retainer - Float	1
18	RR-10-13	Retaining Ring	1
19	C-122674	Float Assy.	1
	B-119271	Kit - Low Water Protection (Incls. items #6, 7, 8, 15, 16, 17, 18 & 19)	AR



ELECTRIC HEAT

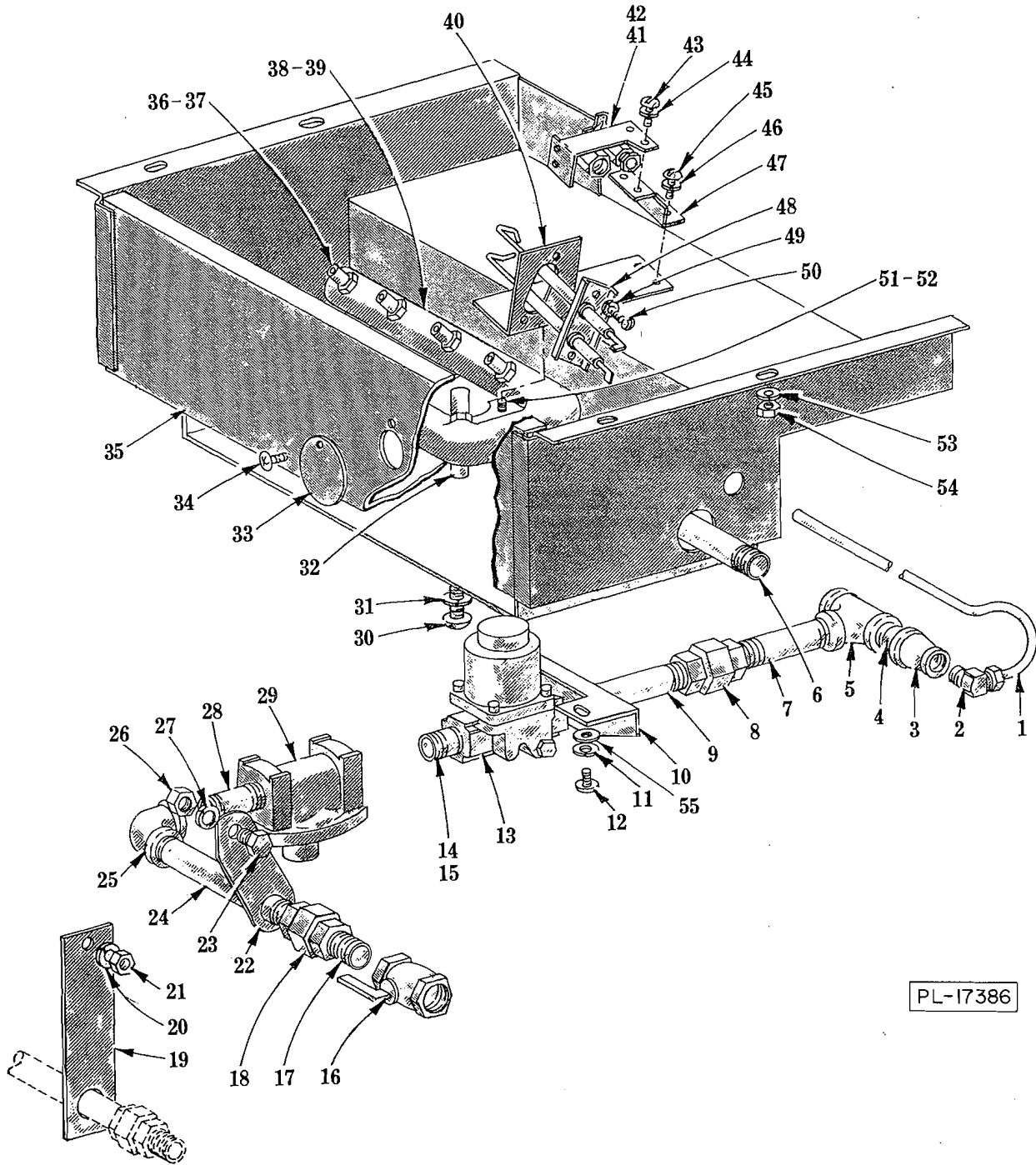
ELECTRIC HEAT

ILLUS. PL-17863	PART NO.	NAME OF PART	AMT.
1	M-77612	Lug - Solderless	2
*2	FE-6-9	Bushing - 3/4" Conduit	2
*3	FE-8-11	3/4" Gasket Assy	2
*4	FE-6-6	Lock Nut - 3/4" Conduit	2
*5	FE-5-84	Conduit - 3/4" x 2-13/16" Lg. (R.T.F.L.)	1
*6	C-119240	Junction Box	1
*7	SC-21-37	Mach. Screw - 1/4"-20 x 3/8" Rd. Hd	4
*8	WL-6-16	Lock Washer - 1/4" Light	4
**9	FE-6-6	Lock Nut - 3/4" Conduit	1
**10	WS-13-45	Washer	1
**11	B-122909	Gasket	1
**12	C-119308	Box - Junction	1
**13	WS-13-45	Washer	1
**14	FE-6-27	Nipple - 3/4" Conduit	1
**15	NS-15-1	Full Nut - 1/4"-20 Hex Fin	2
**16	WL-6-16	Lock Washer - 1/4" Light	2
17	NS-15-13	Full Nut - 3/8"-16 Hex Fin	1
18	WL-6-27	Lock Washer - 3/8" Light	1
19	P-86444	Insulator - Terminal (Above 250 V.)	1
20	NS-9-30	Mach. Nut - #10-32 Hex	AR
21	WL-14-7	Lock Washer - #10 Ext. Shakeproof	AR
22	B-119274	Strap - Jumper (Short)	AR
23	B-119275	Strap - Jumper (Long)	AR
24	B-119276	Gasket - Heater	1
25	B-277983-1	Heater - Electric (100-120 V., 60 Hz., 1 Ph.; 115 V., 50 Hz., 1 Ph.) (Incls. items #20, 22, 23 & 24)	1
26	B-277983-2	Heater - Electric (200-230 V., 60 Hz., 1 & 3 Ph., W/Pilot Circuit; 220 V., 50 Hz., 1 & 3 Ph., W/Pilot Circuit) (Incls. items #20, 22, 23 & 24)	1
27	B-277983-3	Heater - Electric (380 V., 50 Hz., 3 Ph.) (Incls. items #20, 22, 23 & 24)	1
28	B-277983-4	Heater - Electric (400-460 V., 60 Hz., 3 Ph.) (Incls. items #20, 22, 23 & 24)	1

*L.H. Controls.

**R.H.Controls.

(Items #1 thru 16, 115 V.)



PL-17386

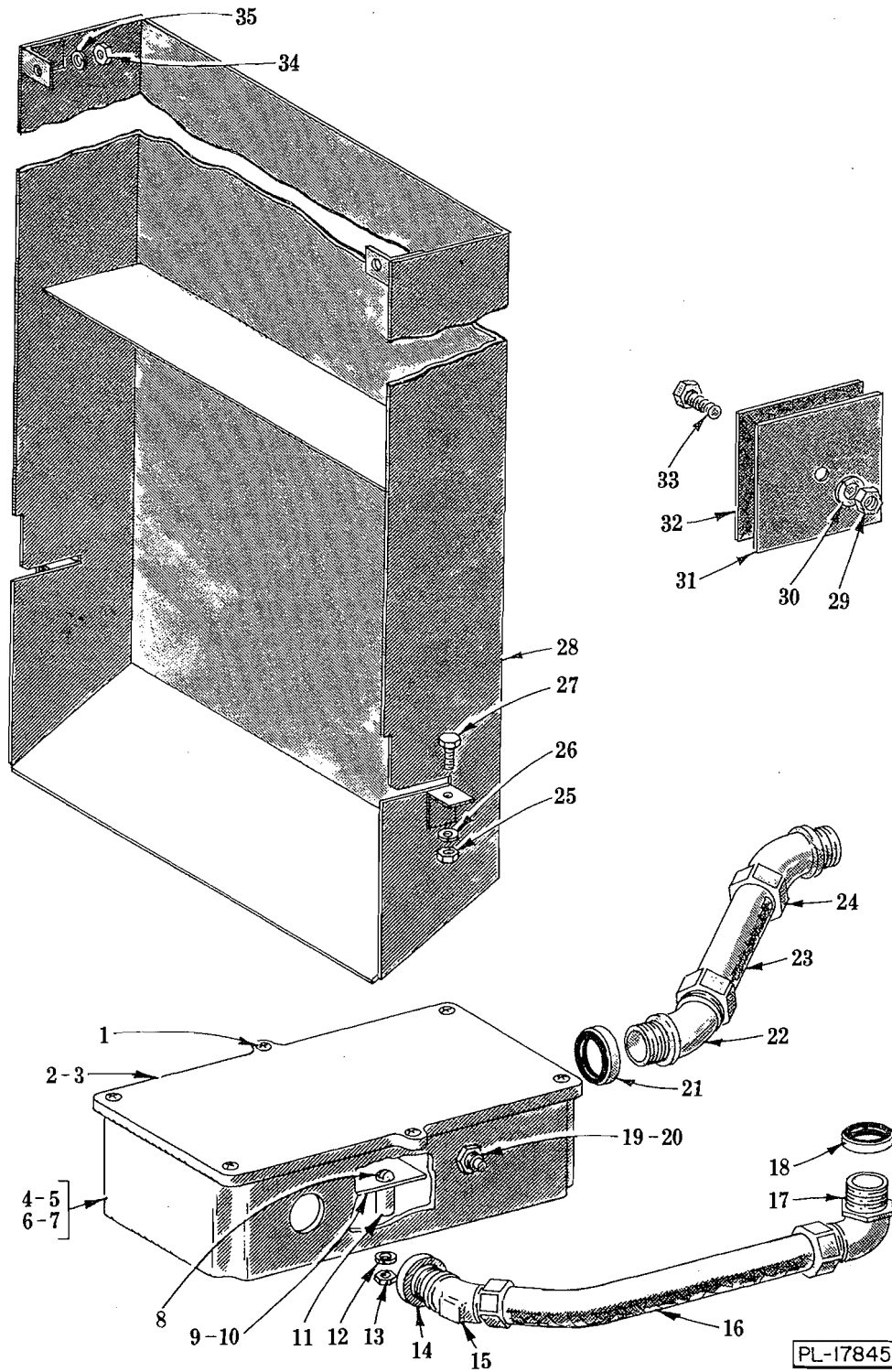
GAS BURNER UNIT

GAS BURNER UNIT

ILLUS. PL-17386	PART NO.	NAME OF PART	AMT.
1	P-23963-11	Tube - 1/4" O.D. Gas	1
2	FP-47-36	Elbow - 90° (1/8" Male Pipe x 1/4" Tube)	1
3	FP-24-45	Coupling - 3/8" to 1/8" Reducing	1
4	FP-35-46	Nipple - 3/8" x 1" Lg. (T.B.E.)	1
5	FP-19-10	Tee - 3/8"	1
6	FP-35-63	Nipple - 3/8" x 4-1/2" Lg. (T.B.E.)	1
7	FP-35-60	Nipple - 3/8" x 3-1/4" Lg. (T.B.E.)	1
8	FP-22-6	Union - 3/8" (Grd. Seat)	1
9	FP-35-61	Nipple - 3/8" x 3-1/2" Lg. (T.B.E.)	1
10	C-277809	Bracket - Control Box Mounting	2
11	WL-6-6	Lock Washer - #10 Light	4
12	SC-21-22	Mach. Screw - #10-24 x 3/8" Rd. Hd	4
13	B-277872	Valve - Gas (120 V., 60 Hz.)	1
14	FP-35-46	Nipple - 3/8" x 1" Lg. (T.B.E.) (Nat. or Mixed Gas)	1
15	FP-35-62	Nipple - 3/8" x 4-1/8" Lg. (T.B.E.) (L.P. Gas)	1
16	FP-11-15	Gas Cock - 3/8" (Lever Handle)	1
17	FP-35-46	Nipple - 3/8" x 1" Lg. (T.B.E.)	1
18	FP-22-6	Union - 3/8" (Grd. Seat)	1
**19	C-119301	Bracket - Pipe Support	1
**20	WL-6-17	Lock Washer - 1/4" Medium	1
**21	NS-15-1	Full Nut - 1/4"-20 Hex Fin	1
*22	C-119278	Support - Pipe	1
*23	SC-41-10	Cap Screw - 5/16"-18 x 5/8" Hex Hd	1
24	FP-35-65	Nipple - 3/8" x 5-1/8" Lg. (T.B.E.)	1
25	FP-13-11	Elbow - 3/8" x 90°	1
*26	NS-15-11	Full Nut - 5/16"-18 Hex Fin	1
*27	WL-6-23	Lock Washer - 5/16" Medium	1
28	FP-35-49	Nipple - 3/8" x 1-1/2" Lg. (T.B.E.) (Nat. or Mixed Gas)	1
29	C-121025	Regulator - Pressure (Nat. or Mixed Gas)	1
30	SC-21-44	Mach. Screw - 1/4"-20 x 1-1/2" Rd. Hd	1
31	WL-6-17	Lock Washer - 1/4" Medium	1
32	A-119151	Spacer - Burner	1
33	B-119171	Cover - Pilot Hole	1
34	SD-8-18	Self-Tapping Screw - #8 x 3/8" Phil. Bind. Hd., Type B	1
35	E-119146	Burner Housing Assy	1
36	A-105763-1	Jet - Gas Burner (Nat. or Mixed Gas)	8
37	A-105763-4	Jet - Gas Burner (L.P. Gas)	8
38	D-105172-1	Gas Burner Assy. (Nat. or Mixed Gas) (Incls. item #36)	1
39	D-105172-2	Gas Burner Assy. (L.P. Gas) (Incls. item #37)	1
40	D-119296	Support - Pilot	1
41	B-105045-1	Pilot (Nat. or Mixed Gas)	1
42	B-105045-2	Pilot (L.P. Gas)	1
43	SC-21-80	Mach. Screw - #10-32 x 3/8" Rd. Hd	2
44	WL-6-7	Lock Washer - #10 Medium	2
45	SC-21-80	Mach. Screw - #10-32 x 3/8" Rd. Hd	2
46	WL-6-7	Lock Washer - #10 Medium	2
47	C-119295	Bracket - Pilot Support	1
48	C-119284	Electrode Assy	1
49	WL-6-1	Lock Washer - #8 Light	2
50	SC-21-91	Mach. Screw - #8-32 x 5/16" Rd. Hd	2
51	SC-21-23	Mach. Screw - #10-24 x 1/2" Rd. Hd	2
52	WL-6-7	Lock Washer - #10 Medium	2
53	WL-6-17	Lock Washer - 1/4" Medium	4
54	NS-15-1	Full Nut - 1/4"-20 Hex Fin	4
55	WS-19-6	Washer	4

*R.H. Controls.

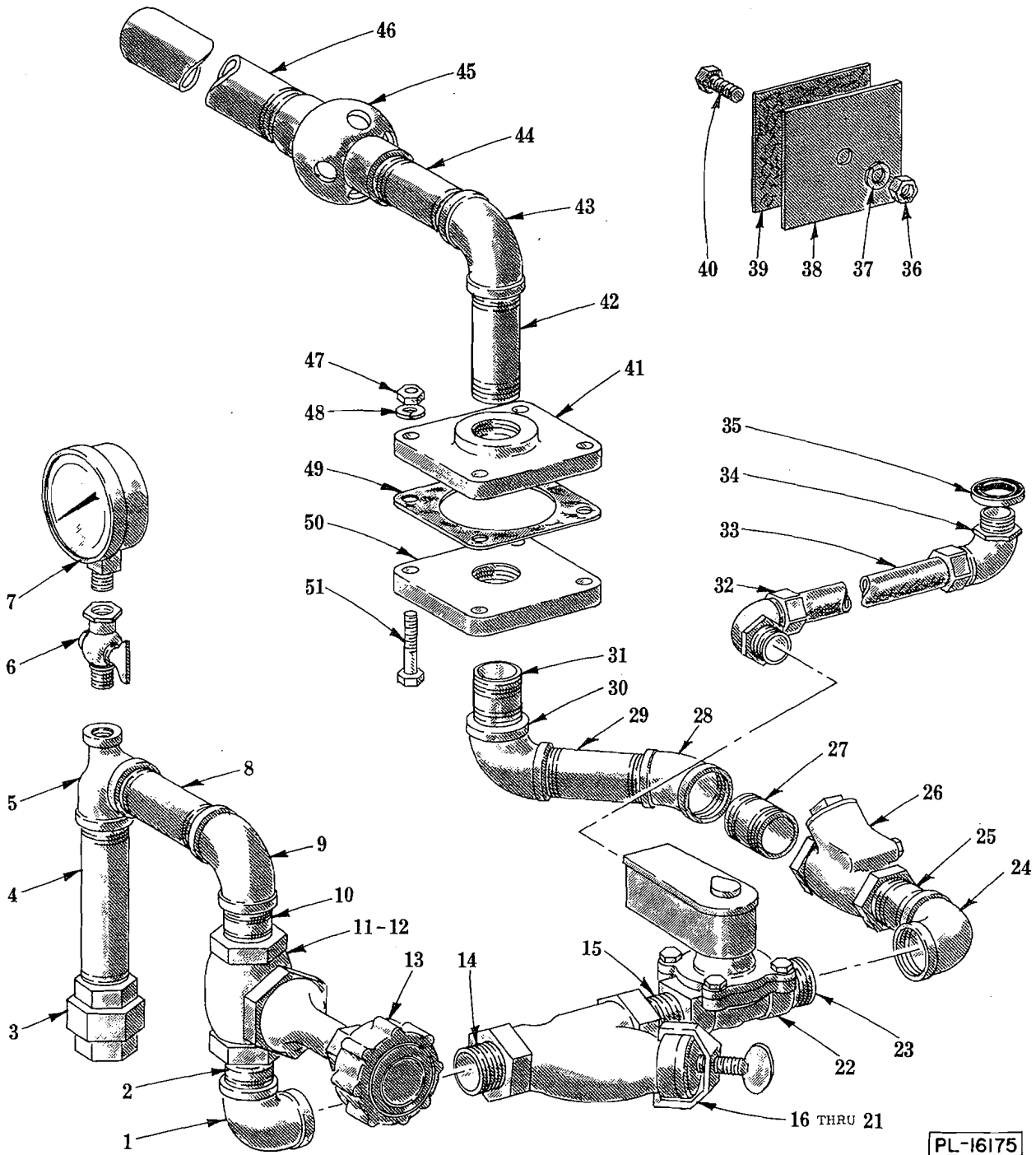
**L.H. Controls.



FLUE AND IGNITER CONTROL UNIT
(GAS HEAT)

**FLUE AND IGNITER CONTROL UNIT
(GAS HEAT)**

ILLUS. PL-17845	PART NO.	NAME OF PART	AMT.
1	SD-12-20	Self-Tapping Screw - #8-32 x 1/2" Phil. Truss Hd., Type 23	6
2	C-288466-3	Lid & Gasket Assy. (Incls. item #3) (Use With Gas Heat)	1
3	C-112005	Gasket (Lid)	1
4	D-288469	Box - Control	1
5	B-276636	Lead Wire Assy. (Grounding)	1
6	FE-6-5	Lock Nut - 1/2" Conduit	1
7	FE-6-51	Lock Nut - 3/4" Conduit	1
8	SC-7-49	Mach. Screw - #8-32 x 1-1/8" Rd. Hd.	3
9	D-121028	Gas Heat Igniter Circuit Assy. (Incls. item #19)	1
10	C-119282	Insulator (Igniter Circuit)	1
11	B-121027	Spacer - Control Board	3
12	WL-3-12	Lock Washer - #8 Medium	3
13	NS-9-12	Mach. Nut - #8-32 Hex	3
14	FE-8-10	1/2" Gasket Assy.	1
15	FE-7-5	Connector - 45° "Sealtite" (1/2" Male Thd. x 1/2" Flex. Cnd.)	1
16	P-77658-45	Conduit - 1/2" x 12" Lg. (Waterproof)	1
17	FE-7-7	Connector - 90° "Sealtite" (1/2" Male Thd. x 1/2" Flex. Cnd.)	1
18	FE-8-10	1/2" Gasket Assy.	1
19	B-121040	Switch - Thermal	1
20	WL-8-27	Lock Washer - 3/8" Int. Shakeproof	1
21	FE-8-11	3/4" Gasket Assy.	1
22	FE-8-44	Connector - 45° (3/4" Male Thd. x 3/4" Thinwall)	1
23	P-72654-13	Conduit - 3/4" x 2" (Thinwall)	1
24	FE-8-44	Connector - 45° (3/4" Male Thd. x 3/4" Thinwall)	1
25	NS-15-1	Full Nut - 1/4"-20 Hex Fin	2
26	WL-6-17	Lock Washer - 1/4" Medium	2
27	SC-41-50	Cap Screw - 1/4"-20 x 1/2" Hex Hd.	2
28	D-119090	Flue Assy.	1
29	NS-15-13	Full Nut - 3/8"-16 Hex Fin	1
30	WL-6-27	Lock Washer - 3/8" Light	1
31	B-119153	Plate - Electric Heater Cover	1
32	B-119152	Gasket - Cover Plate	1
33	SC-41-29	Cap Screw - 3/8"-16 x 7/8" Hex Hd.	1
34	NS-15-1	Full Nut - 1/4"-20 Hex Fin	2
35	WL-6-17	Lock Washer - 1/4" Medium	2

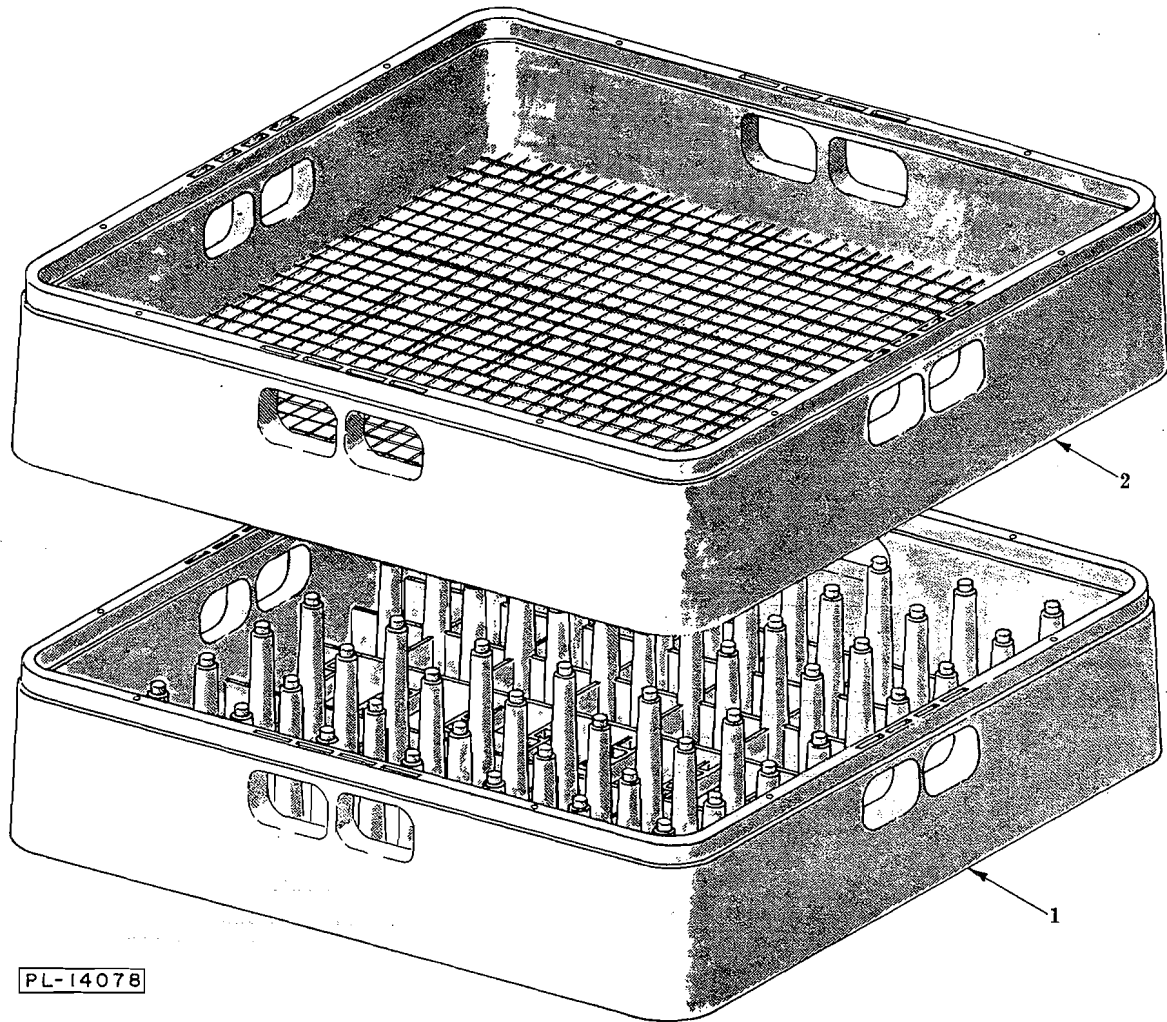


PL-16175

STEAM INJECTOR

STEAM INJECTOR

ILLUS. PL-16175	PART NO.	NAME OF PART	AMT.
1	FP-13-22	Elbow - 3/4" x 90°	1
2	FP-36-92	Nipple - 3/4" x 1-3/8" Lg. (T.B.E.)	1
3	FP-22-17	Union - 3/4" (Grd. Seat)	1
4	FP-36-10	Nipple - 3/4" x 4-3/4" Lg. (T.B.E.)	1
5	FP-19-79	Tee - 3/4" x 1/4" x 3/4" Reducing	1
6	P-86218	Pet Cock - 1/4" (T Handle)	1
7	C-277915	Gauge - Water Pressure	1
8	FP-36-6	Nipple - 3/4" x 3-1/2" Lg. (T.B.E.)	1
9	FP-13-22	Elbow - 3/4" x 90°	1
10	FP-36-92	Nipple - 3/4" x 1-3/8" Lg. (T.B.E.)	1
11	A-114683	Valve - 3/4" Globe (Incls. item #12)	1
12	FP-9-8	Disc - 3/4" Valve	1
13	P-70149-2	Handle - 3/4" Valve	1
14	FP-36-92	Nipple - 3/4" x 1-3/8" Lg. (T.B.E.)	1
15	FP-36-92	Nipple - 3/4" x 1-3/8" Lg. (T.B.E.)	1
16	M-82228	Line Strainer - 3/4" (Incls. items #17 thru 21)	1
17	M-82231	Screen (3/4" Line Strainer)	1
18	M-82234	Plate - Seal (3/4" Line Strainer)	1
19	M-82236	Clamp (3/4" Line Strainer)	1
20	M-82238	Thumb Screw	1
21	D-67500-59	"O" Ring (3/4" Line Strainer)	1
22	A-108156-3	Solenoid Valve - 3/4" (115 V., 50/60 Hz.) (Pilot Circuit)	1
23	FP-36-92	Nipple - 3/4" x 1-3/8" Lg. (T.B.E.)	1
24	FP-13-22	Elbow - 3/4" x 90°	1
25	FP-36-92	Nipple - 3/4" x 1-3/8" Lg. (T.B.E.)	1
26	P-74696	Valve - 3/4" Check	1
27	FP-36-92	Nipple - 3/4" x 1-3/8" Lg. (T.B.E.)	1
28	FP-13-20	Elbow - 3/4" x 45°	1
29	FP-36-5	Nipple - 3/4" x 3" Lg. (T.B.E.)	1
30	FP-13-22	Elbow - 3/4" x 90°	1
31	FP-36-92	Nipple - 3/4" x 1-3/8" Lg. (T.B.E.)	1
32	FE-7-3	Connector - 90° "Sealtite" (1/2" Male Thd. x 3/8" Flex. Cnd.)	1
33	P-68190-38	Conduit - 3/8" x 8-3/8" (Waterproof)	1
34	FE-7-3	Connector - 90° "Sealtite" (1/2" Male Thd. x 3/8" Flex. Cnd.)	1
35	FE-8-10	1/2" Gasket Assy	1
36	NS-15-13	Full Nut - 3/8"-16 Hex Fin	1
37	WL-6-27	Lock Washer - 3/8" Light	1
38	B-119153	Plate - Cover	1
39	B-119152	Gasket - Cover Plate	1
40	SC-41-29	Cap Screw - 3/8"-16 x 7/8" Hex Hd	1
41	P-67039-2	Plate - Adapter	1
42	FP-54-30	Nipple - 3/4" x 3" Lg. (T.B.E.)	1
43	FP-49-15	Elbow - 3/4" x 90°	1
44	FP-54-44	Nipple - 3/4" x 2-1/2" Lg. (T.B.E.)	1
45	R-83063	Heater - Water	1
46	FP-54-35	Nipple - 1" x 10" Lg. (S.T.O.E.)	1
47	NS-18-6	Jam Nut - 5/16"-18 Hex Fin	4
48	WL-6-22	Lock Washer - 5/16" Light	4
49	P-67036	Gasket - Adapter Plate	1
50	P-67039-2	Plate - Adapter	1
51	SC-41-17	Cap Screw - 5/16"-18 x 1-1/2" Hex Hd	4
	B-112066-1	Coil - Solenoid Valve (115 V.)	1



DISH RACKS

ILLUS. PL-14078	PART NO.	NAME OF PART	AMT.
1	A-105113	Rack - Peg	1
2	A-105114	Rack - Combination	1