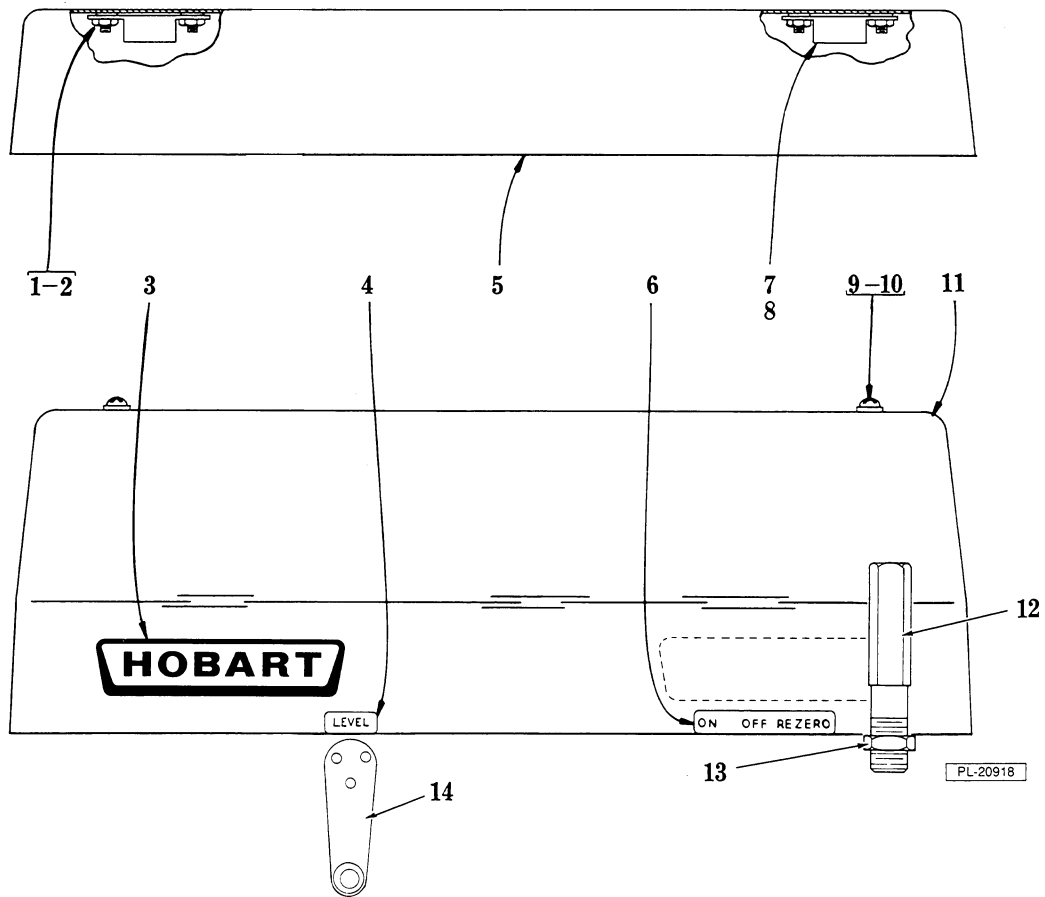




CATALOG OF REPLACEMENT PARTS

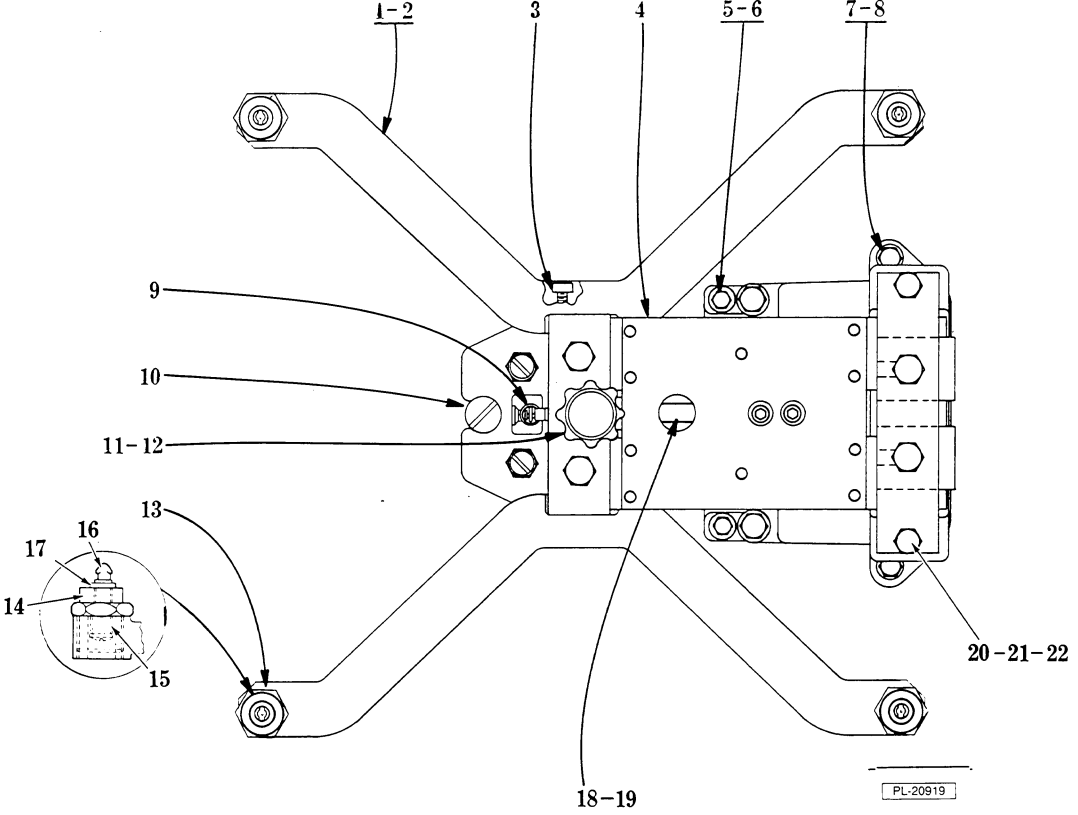
MODEL 5000SE SCALE

ML-28746



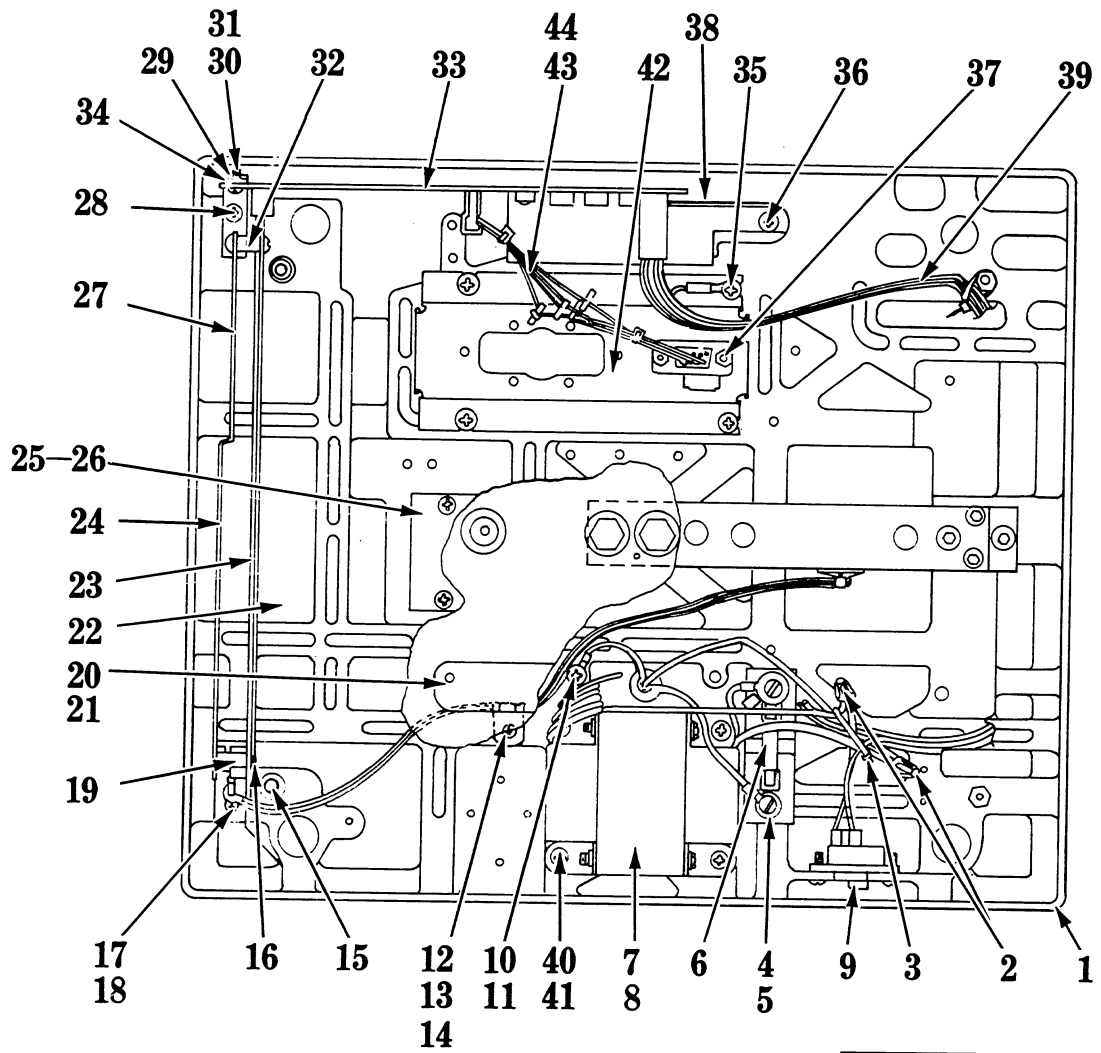
**HOUSING & PLATTER
(SCALES WITH SPIDER FLEXURE)**

ILLUS. PL-20918	PART NO.	NAME OF PART ₃₁	AMT.
1	NS-44-5	Mach. Nut 6-32 Hx	8
2	252954	Strap - Ground	2
3	252217-1	Logo - Machine	2
4	252647	Label - Level	1
5	182489	Platter Assy. (Incls. items 1, 2 & 7)	1
6	252229	Label - Switch	1
7	256234	Bracket - Receptacle Housing	4
8	256235	Receptacle - Clip-On	4
9	SC-18-34	Mach. Screw 8-32 x 1/2 Phil. Pan Hd	4
10	12851	Washer Flat	4
11	182240	Housing Assy. (Incls. items 3, 4 & 6)	1
12	252237	Down Stop	4
13	252490	Nut 5/8-18 Hex	4
14	182948	Spirit Level	1



SPIDER FLEXURE

ILLUS. PL-20919	PART NO.	NAME OF PART ³¹	AMT.
1	182205	Spider Assy. (Incls. items 2, 13 thru 17)	2
2	251918-2	Spider - Platter	1
3	SC-110-43	Cap Screw 10-24 x 1 Soc., Hd	4
4	182868	Flexure & Post Assy. (30 lb.)	1
5	SD-33-72	Self-Tapping Screw 10-24 x 7/8 Phil. Pan Hd	2
6	WL-8-13	Lock Washer 10 Int. Shakeproof	2
7	SD-33-73	Self-Tapping Screw 1/4-20 x 1 Phil. Pan Hd	2
8	WL-8-17	Lock Washer 1/4 Int. Shakeproof	2
9	254342	Spring - Overload (30 lb.)	1
10	251890	Screw - Stop	1
11	93159	Leveling Foot Assy	1
12	NS-13-27	Mach. Nut 3/8-24 Hex	1
13	252490	Hex Nut	4
14	256232	Screw - Adjusting	4
15	256233	Spring - Adjusting	4
16	252197	Fastener - Turn	4
17	252196	Retainer - Washer	4
18	252304-1	Kit - Load Cell (30 Lb.)	1
19	527015	Vibratite	AR
20	NS-9-30	Lock Nut 10-32 Hex	2
21	WL-7-12	Lock Washer 10 Ext. Shakeproof	2
22	251877	Screw - Adjusting	2



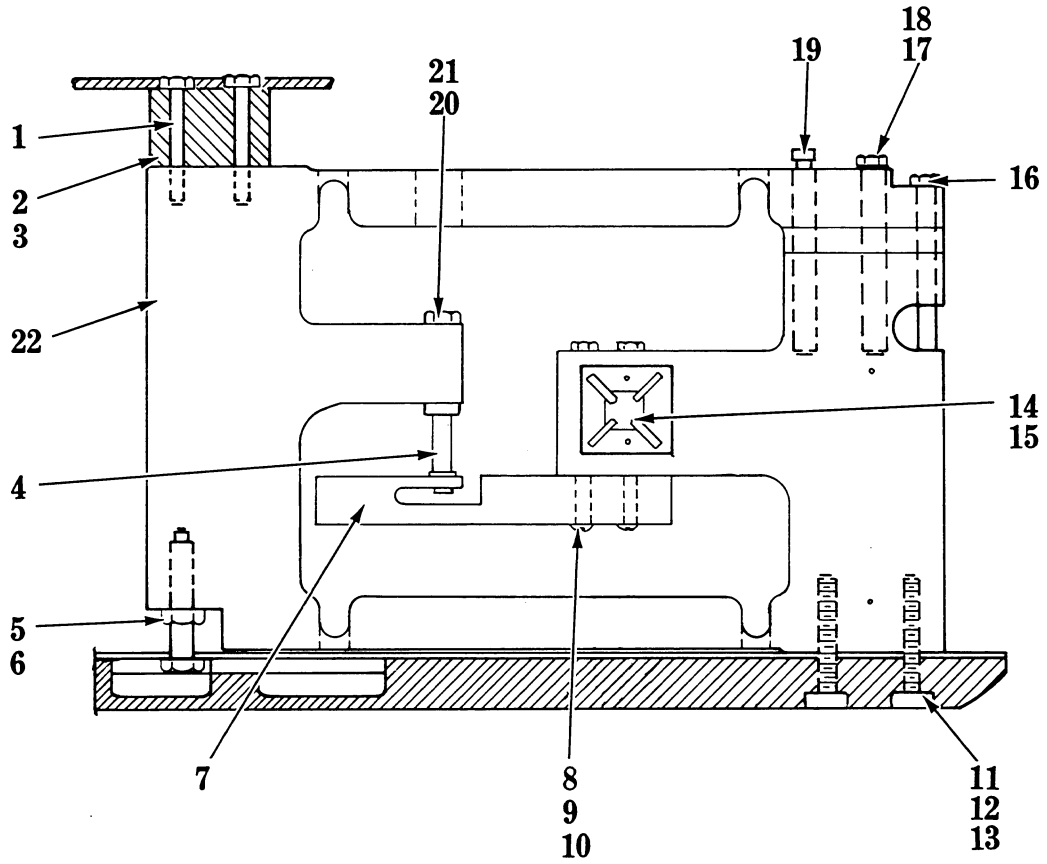
PL-20911-1

BASE

BASE

ILLUS. PL-20911-1	PART NO.	NAME OF PART ³¹	AMT.
1	258487-2	Base - Scale	1
2	FE-6-17	Nut - Wire	3
3	31355	Tie - Wire	3
4	22376-1	Block - Fuse	1
5	SD-33-20	Self-Tapping Screw 6-32 x 1/2 Flat Hd., Type TT	1
6	FE-22-28	Fuse 1/2 Amp. "Slo-Blow"	1
7	182980	Transformer & Harness Assy. (Incls items 2, 8 & 9)	1
8	252325	Transformer - Power	1
9	252232	Switch - Power	1
10	SD-15-40	Self-Tapping Screw 8-32 x 3/8 Pan Hd., Type TT	1
11	WL-7-7	Lock Washer 8 External Shakeproof	1
12	SD-15-40	Self-Tapping Screw 8-32 x 3/8 Pan Hd., Type TT	1
13	86967	Clip - Cable	1
14	6895	Washer - Flat	1
15	256247	Tubing	2
16	SC-7-3	Mach. Screw 4-40 x 3/16 Rd. Hd	4
17	SD-15-38	Mach. Screw 10-24 x 3/4 Oval Hd	1
18	WS-28-1	Washer	1
19	252245	Spacer	1
20	41173	Plate - Data	1
21	SD-33-15	Self-Tapping Screw 0 x 3/16 Rd. Hd., Type U	2
22	255111	Label - Interface Warning	1
23	182871-10	Logic & Board Assy	1
24	253771	Label - Power Disconnect	1
25	257617	Plate - Cover	1
26	SD-15-40	Self-Tapping Screw 8-32 x 3/8 Pan Hd., Type TT	2
27	251976	Shield - P.C. Board	1
28	SD-24-36	Self-Tapping Screw 6-32 x 3/8 Flat Hd., Type TT	2
29	251970-2	Bracket - P.C. Board	1
30	SC-18-27	Mach. Screw 6-32 x 3/16 Pan Hd	3
31	WL-8-2	Lock Washer 6 Internal Shakeproof	3
32	252292	Spacer	1
33	182870	Power Board	1
34	179494	Washer - Mica	2
35	SD-15-40	Self-Tapping Screw 8-32 x 3/8 Pan Hd., Type TT	4
36	SD-15-42	Self-Tapping Screw 8-32 x 5/8 Pan Hd., Type TT	2
37	256249	Screw - Screwlock (Female)	2
38	519504	Thermal Compound	AR
*39	182865	Cable - Board to Transformer	AR
40	SD-15-40	Self-Tapping Screw 8-32 x 3/8 Pan Hd., Type TT	4
41	WL-7-7	Lock Washer 8 External Shakeproof	4
42	257170	Mount - Connectors	1
43	183212-1	Harness - Communications (5000SE)	AR
44	182866	Cable - Communications (5000S)	AR

*Cable not required when using 182980 Transformer, item 7.

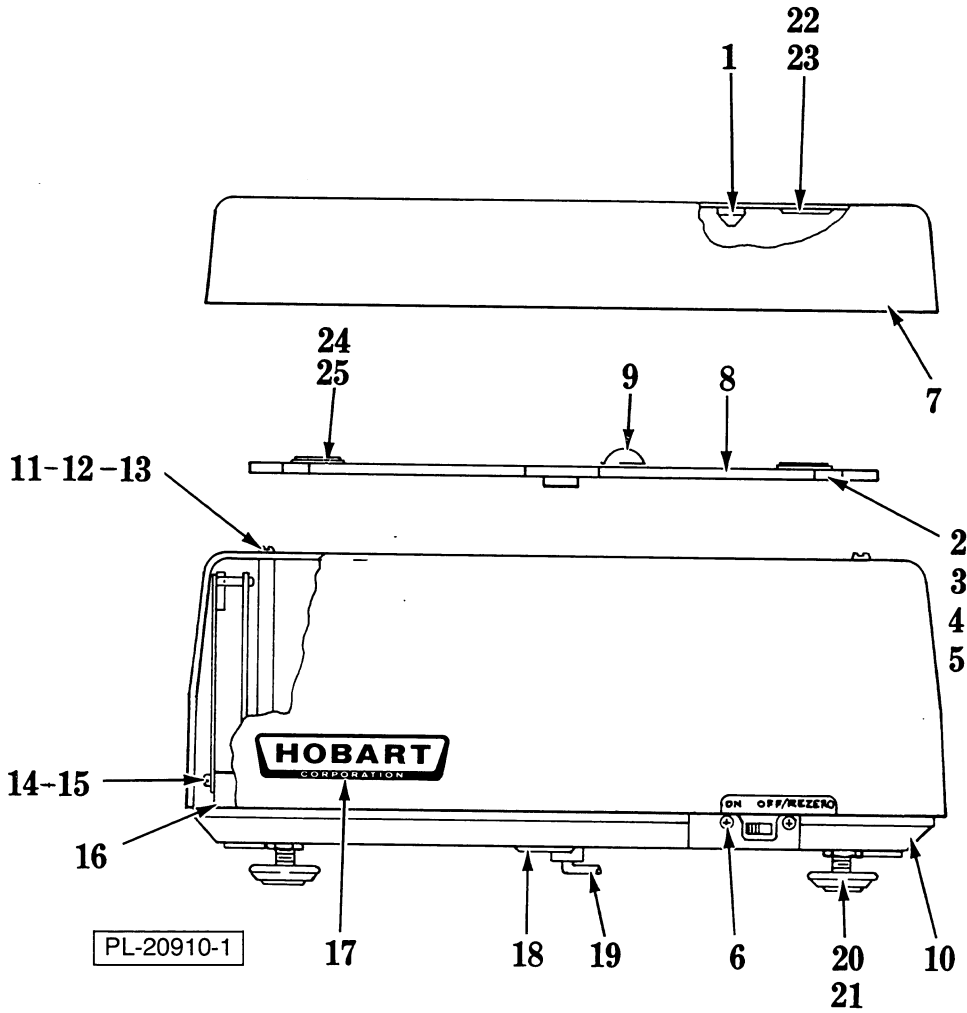


PL-20912-1

LOAD CELL

LOAD CELL

ILLUS. PL-20912-1	PART NO.	NAME OF PART ³¹	AMT.
1	257449	Cap Screw Hex Hd	2
2	257442	Block Assy. (Incls. item 3)	1
3	RP-3-47	Rollpin	2
4	257634	Link - Load Cell (H.B.M.)	1
5	NS-13-2	Nut 1/4-20 Hex	1
6	SC-37-87	Cap Screw 1/4-20 Hex	1
7	257479	Kit - Load Cell (H.B.M.) (Incls. items 4 & 9)	1
8	NS-9-12	Mach. Nut 8-32 Hex	2
9	SC-18-61	Mach. Screw 8-32 x 2 1/4 Pan Hd	2
10	WL-3-12	Lock Washer 8 Medium	2
11	SC-89-2	Screw 1/4-20 x 3/4 Socket Hd	2
12	WL-3-39	Lock Washer 1/4 Medium	2
13	WS-3-19	Washer	2
14	265503	Mount - Cable Tie	1
15	251199	Tie - Cable	1
16	SC-92-8	Cap Screw 10-32 x 1 1/8 Hex Socket Hd	1
17	SC-112-98	Cap Screw 10-32 x 1 1/4 Hex Socket Hd	2
18	WS-28-18	Washer	2
19	258628	Screw - Socket Hd. 1/4-28 x 1 1/2	1
20	WS-3-19	Washer	1
21	NS-13-2	Nut 1/4-20 Hex	1
22	259441	Flexure - Integral (Does not include Load Cell)	1



COVER AND PLATTER

ILLUS.	PART NO.	NAME OF PART ³¹	AMT.
	1	Locator - Platter	2
	2	Set Screw 1/4-20	4
	*3	Set Screw 1/4-20 x 3/4	2
	*4	WL-8-17 Lock Washer 1/4 Internal Shakeproof	2
	*5	NS-13-2 Nut 1/4-20 Hex	2
	6	SC-71-6 Mach. Screw 6-32 x 7/16 Truss Hd	2
	7	Platter - Above Well (Incls. items 1 & 22)	1
	8	257591 Platter Support Assy. (Incls. items 9 & 24)	1
	9	257114 Finger - Contact	AR
	10	258487-2 Base - Scale	1
	11	252244 Post - Cover Support	4
	12	SC-18-34 Mach. Screw 8-32 x 1/2 Pan Hd	4
	13	12851 Washer - Fiber	4
	14	SC-81-5 Mach. Screw 4-40 x 3/4 Rd. Hd	1
	15	NS-9-2 Mach. Nut 4-40 Hex	1
	16	251993 Block - P.C. Board	1
	17	257424 Cover Assy	1
	18	251403 Bushing - Strain Relief	1
	19	183118 Line Cord & Terminal Assy	1
	20	93160 Leveling Screw Foot Assy. (Incls. item 6)	4
	21	NS-35-13 Lock Nut 3/8-24 "Palnut"	4
	22	258959 Fastener - Dual Lock 1" Square	4
	23	257482 Fastener - Platter (9")	2
	24	258958 Fastener - Dual Lock 1" Square	4
	25	257483 Fastener - Platter (9")	2

*These items used when installed with an ILA.