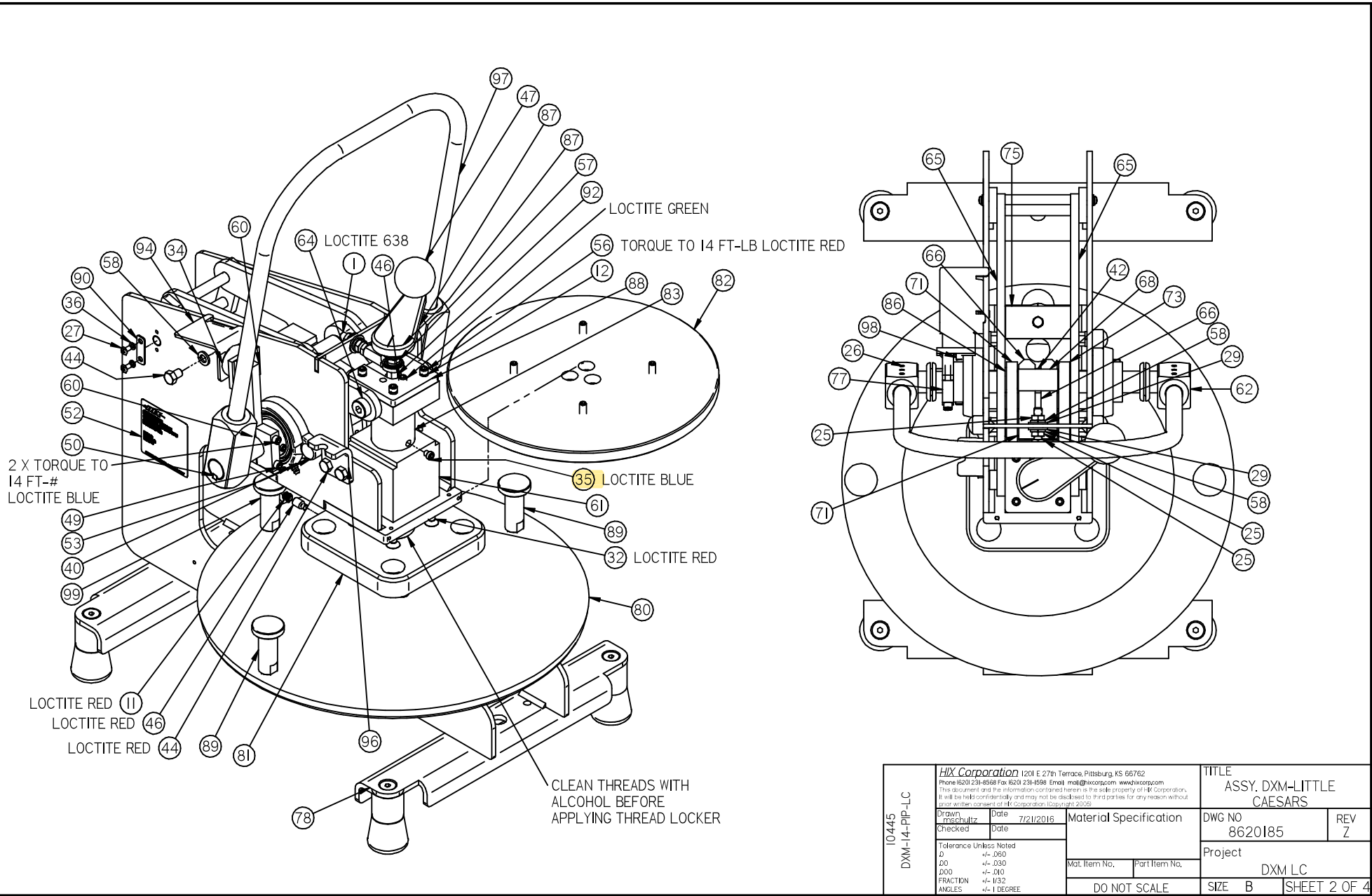


REV	DATE	BY	DESCRIPTION	ECO #									
Z	4-8-2022	MAS	REMOVE (II) 8621110, ADD (II) 8621276		68	I	8603116	M- PIN ROD LARGE	34	I	31453	FOOT RUBBER 0.75x1.50x0.25	
					67	2	8603105	DXE LINK FOLLOWER	33	5	30910	WASHER LOCK HEL SPR 5/16 ZP	
					66	2	8603103	M- LINK CRANK LARGE	32	4	28142	SCREW FHSKT 5/16-18x1.000	
99	I	9862011	M-LC PAN HOLD DOWN		65	2	8603101	DXE LINK STABILIZER	31	AR	25690	ADHESIVE RHINO RBA #300 4 OZ.	
98	I	90134	SCREW CPSKT 1/4-20x0.750		64	2	8601220	M-DXE DRIVE PIN	30	2	24732	WASHER FLT .344X0.688X.063 ZPS	
97	I	8621276	HANDLE DXM LC STEEL HANDLE		63	I	8601217	M-DXE ADJSMNT SCREW RETAINER	29	2	16683	WASHER FLT .375x0.875x.078 ZPS	
96	I	8621243	BRACKET, ROTATION STOP DOWN		62	2	8601081	M-DP DXM HANDLE ADAPTOR	28	3	16659	WASHER FLT .313x0.750x.063 ZPS	
95	I	8621135	ASSEMBLY, HOUSING LC SW		61	I	8600920	DP JACK SHAFT HOUSING ASSY.	27	4	15321	SCREW MCH 10-32x0.375 PHPH	
94	I	8621133	HANDLE STOP		60	I	8600450	DXM STOP BAR WELDMENT	26	12	15131	SCREW SET 1/4-20x0.250	
93	2	8621132	GROMMET I.OOIDX.095 GRV		59	I	79426	WASHER LOCK HEL SPR 1/4 ZP	25	3	14647	NUT HEX JAM 3/8-16 NC ZP	
92	I	8621131	M-DXE JACK HEX SHAFT LC		58	10	79418	WASHER LOCK HEL SPR 3/8 ZP	24	5	14571	NUT 3/8-16 ZPS	
91	I	8621123	HOUSING COVER I LC		57	I	73247	NUT 3/8-16 JAM NYLON INSERT ZPS	23	I	11434	DECAL, FOR SERVICE 2 X .5	
90	2	8621119	M-DXM PIN RETAINER LC		56	4	72413	SCREW CPSKT 1/4-20x1.000 GD A574	22	4	11404	SCREW MCH 10-32X0.375 SS	
89	2	8621115	M-LC PAN HOLD DOWN		55	AR	71050	SPLY-THREAD LOCK LOCKTITE 277 RED	21	I	11327	DECAL, DOUGHXPRESS DOMED 6.75 X 1.5	
88	I	8621113	DXE ADJUSTMENT SCREW CAP LC		54	2	70597	SCREW SET 5/16-24x0.625 CP	20	I	10963	DECAL, QR CODE DXP	
87	I	8621111	M-HANDLE LC		53	4	70563	BOLT CAR 3/8-16x1.250	19	2	10785	BOLT 5/16-18x1.500	
86	I	8621109	M-DXM PINION SHAFT LC		52	2	70268	DECAL HIX ID. 3" X 3" SILVER	18	3	10777	BOLT 5/16-18x1-1/4	
85	I	8621108	M-DXE JACK ADJ STOP LC		51	I	70077	SCREW FHSKT 1/4-20x1.000	17	10	10733	CAP, SCREW SNAP-ON #8-10 WHITE	
84	I	8621106	O-HOUSING FRONT COVER		50	2	67490	KEY STL .250x.250x1.50 UNDSZ	16	I	10678	BOLT 1/4-20x0.750	
83	I	8621105	M-DP JACK SHAFT DXM LC		49	2	65242	SCREW CPSKT 1/4-20x1.750	15	I	10664	DECAL MADE IN USA	
82	I	8621103	M-ASSY PLATEN DXM LC UPPER		48	I	63916	KEY STL .250x.250x.750	14	AR	10600	SPLY-LOCTITE 7471 PRIMER	
81	I	8621100	P-ASSY UPPER PLATEN MOUNT PLATE		47	I	62561	KNOB PHENOLIC CL 852-PB	13	I	10550	DECAL THICK THIN	
80	I	8621097	M-DXM LC LOWER PLATEN		46	2	62251	SCREW SET 3/8-16x0.625 DP	12	4	10518	WASHER LOCK HEL SPR 1/4 SH BO	
79	I	8620174	P-DXM LC PACKAGING		45	I	61220	ROD END 3/8-24 RH FEM	11	I	10457	SCREW SET 3/8-16x0.375 NT CP	
78	I	8620173	M-ASSY FRAME WITH SUPPORTS		44	3	50342	BOLT 3/8-16x0.500	10	I	10455	PLUG HOLE 2" STL NI PLATED	
77	I	8609117	DXM SHAFT CLAMP		43	12	50180	SCREW MCH 10-32x0.375 PHPH SS	9	I	10380	MANUAL OWNERS DXM-I4-PIP-LC	
76	2	8603502	DXE MAIN SHAFT BUSHING		42	I	39748	KEY STL .250x.250x1.75 UNDSZ	8	I	10357	DETENT BALL 3/8-16x0.188 PLUNGER /	
75	I	8603134	SPRING PLATE UPPER		41	I	39705	SPRING DIE M150-500	7	3	10341	SCREW CPSKT 3/8-16x1.500 GD 8	
74	2	8603133	DXM SPRING HOLDER		40	2	39586	BEARING I-1/4" 2 BOLT FLANGE	6	AR	10238	SPLY-THREAD LOCK LOCKTITE 638	
73	I	8603128	LINK MAIN LARGE 1/32 CHAMFER RIGHT		39	AR	38032	SPLY-THREAD LOCK LOCKTITE BLUE	5	2	10199	BEARING WSHR.75X1.250X.032	
72	I	8603127	PIN CRANK LARGE LC		38	I	35691	GROMMET .375IDx.625 GRV	4	I	10171	GREASE FD GRD 40Z TUBE	
71	I	8603124	LINK MAIN LARGE 1/32 CHAMFER LEFT		37	2	34118	RETAINING RING EXT 0.750 E	3	AR	10126	SPLY-SEALANT WHITE EMI5005	
70	I	8603118	DXE PIN FOLLOWER		36	4	32228	WASHER LOCK HEL SPR #10 ZP	2	I	10027	SCREW FHSKT 3/8-16x1.000 SS	
69	I	8603117	DXE PIN STABILIZER		35	I	32224	SCREW SET 3/8-16x0.375 DP	1	I	10024	SCREW SET 3/8-24 X 2.000	
ITEM	QTY.	PART #	Title		ITEM	QTY.	PART #	Title		ITEM	QTY.	PART #	Title

NOTES:

I. ITEM # I0445. MODEL # 8620185.

10445 DXM-I4-PIP-LC	Hix Corporation 1201 E 27th Terrace, Pittsburg, KS 66762 Phone 620 231-8588 Fax 620 231-8588 Email mail@hixcorp.com www.hixcorp.com <small>This document and the information contained herein is the sole property of Hix Corporation. It will be held confidentially and may not be distributed to third parties for any reason without prior written consent of Hix Corporation. (Copyright 2005)</small>		TITLE ASSY, DXM-LITTLE CAESARS			
	Drawn mchultz	Date 7/21/2016	Material Specification	DWG NO 8620185	REV Z	
	Checked	Date		Project DXM LC		
	Tolerance Unless Noted .2 +/- .050 .50 +/- .030 .000 +/- .010 FRACTION +/- 1/32 ANGLES +/- 1 DEGREE		Mat. Item No.	Part Item No.	DO NOT SCALE	SIZE B



2 X TORQUE TO
14 FT-#
LOCTITE BLUE

LOCTITE GREEN

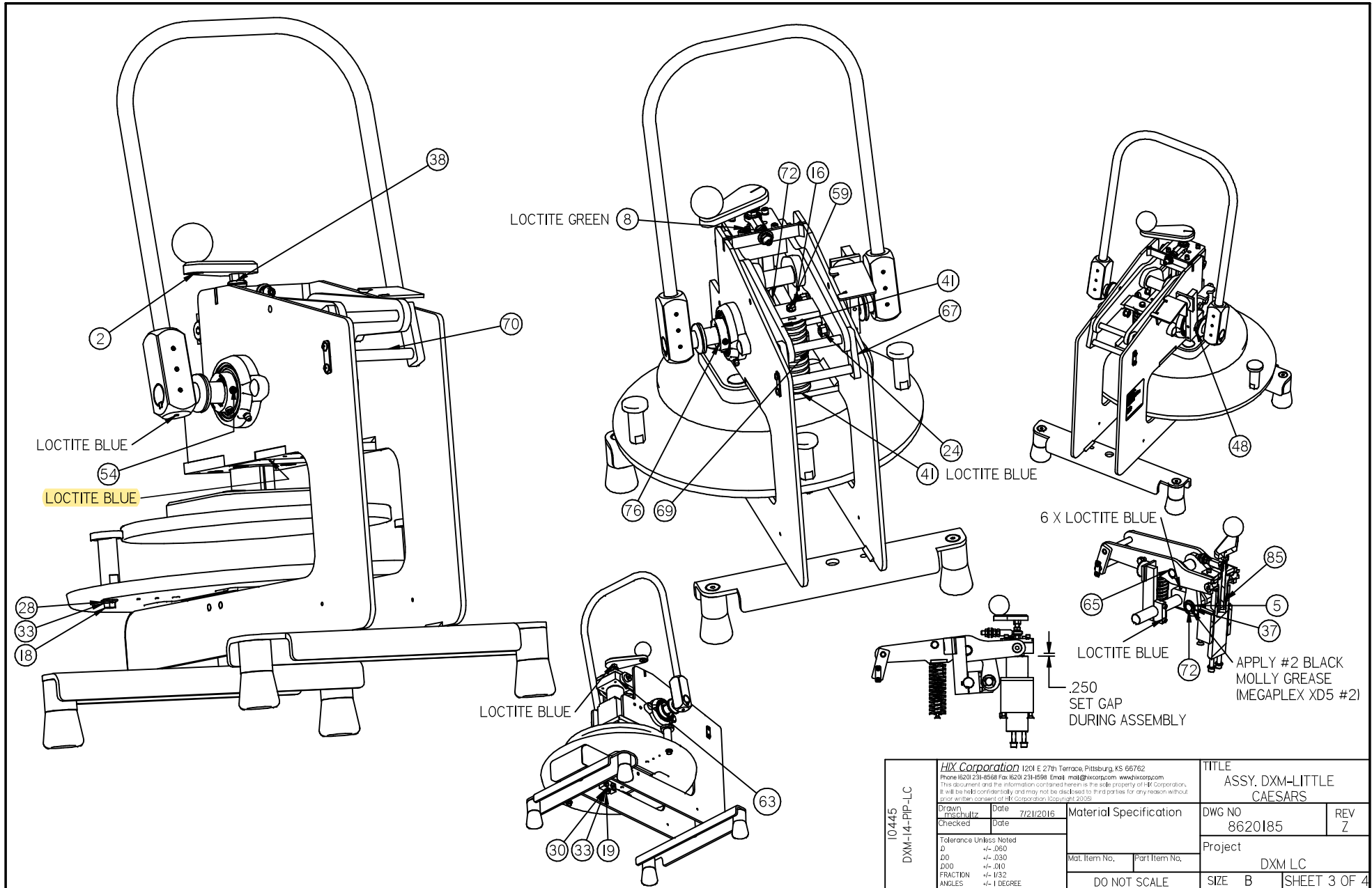
TORQUE TO 14 FT-LB LOCTITE RED

LOCTITE BLUE

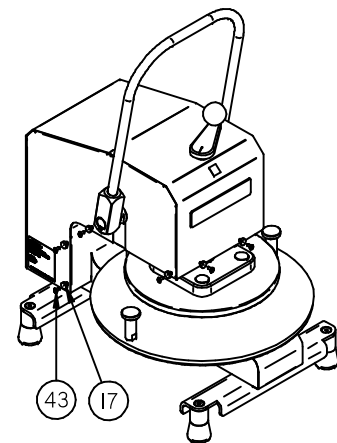
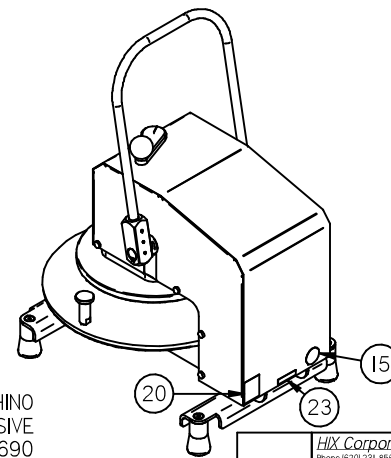
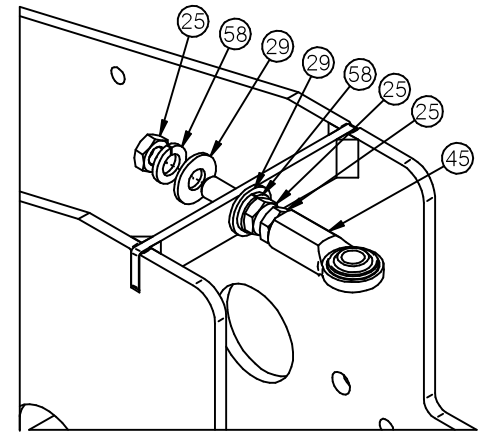
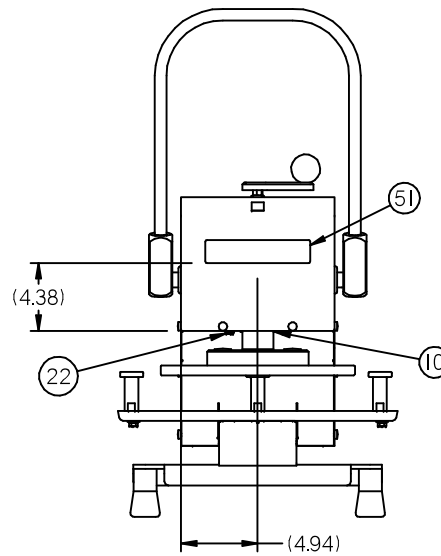
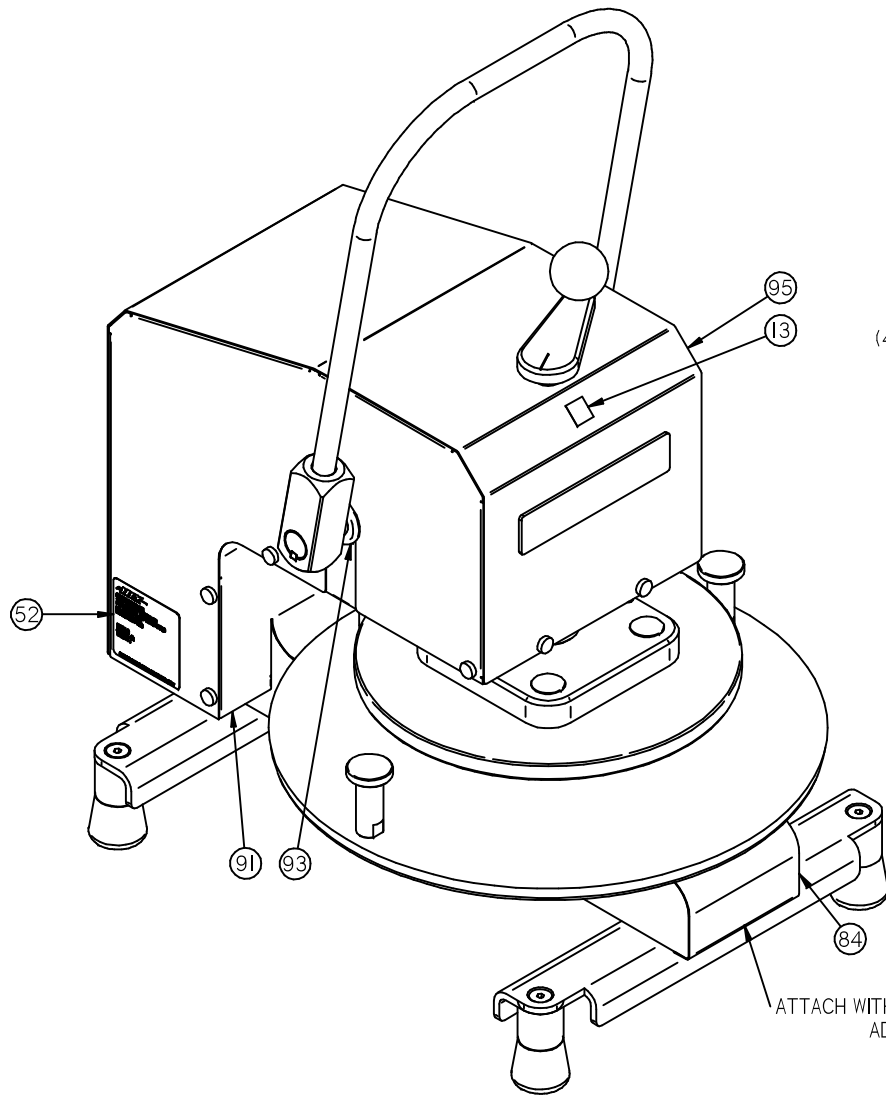
LOCTITE RED

CLEAN THREADS WITH
ALCOHOL BEFORE
APPLYING THREAD LOCKER

10445 DXM-14-PIP-LC	<i>Hix Corporation</i> 1201 E 27th Terrace, Pittsburg, KS 66762 Phone 620 231-8588 Fax 620 231-4598 Email mail@hixcorp.com www.hixcorp.com <small>This document and the information contained herein is the sole property of Hix Corporation. It will be held confidentially and may not be disclosed to third parties for any reason without prior written consent of Hix Corporation. Copyright 2005.</small>		TITLE ASSY, DXM-LITTLE CAESARS		
	Drawn JTSchultz	Date 7/21/2016	Material Specification	DWG NO 8620185	REV Z
	Checked Date		Mat. Item No.	Project DXM LC	
	Tolerance Unless Noted .01 +/- .050 .00 +/- .030 .000 +/- .010 FRACTION +/- 1/32 ANGLES +/- 1 DEGREE		Part Item No.	DO NOT SCALE SIZE B SHEET 2 OF 4	



10445 DXM-14-PIP-LC	<i>Hix Corporation</i> 1201 E 27th Terrace, Pittsburg, KS 66762 Phone 620 231-8568 Fax 620 231-8568 Email mail@hixcorp.com www.hixcorp.com <small>This document and the information contained herein is the sole property of Hix Corporation. It will be held confidentially and may not be disclosed to third parties for any reason without prior written consent of Hix Corporation (Copyright 2008).</small>		TITLE ASSY, DXM-LITTLE CAESARS		
	Drawn JTSchultz	Date 7/21/2016	Material Specification	DWG NO 8620185	REV Z
	Checked Date	Tolerance Unless Noted .2 +/- .050 .00 +/- .030 .000 +/- .010 FRACTION +/- 1/32 ANGLES +/- 1 DEGREE	Mat. Item No. Part Item No.	Project DXM LC	
			DO NOT SCALE	SIZE B	SHEET 3 OF 4



ATTACH WITH RHINO
ADHESIVE
25690

10445 DXM-14-PIP-LC	<i>Hix Corporation</i> 1201 E 27th Terrace, Pittsburg, KS 66762 Phone 620 231-8568 Fax 620 231-8568 Email mail@hixcorp.com www.hixcorp.com <small>This document and the information contained herein is the sole property of Hix Corporation. It will be held confidentially and may not be disclosed to third parties for any reason without prior written consent of Hix Corporation. Copyright 2008.</small>		TITLE ASSY, DXM-LITTLE CAESARS		
	Drawn JTSchultz Date 7/21/2016	Checked Date 	Material Specification	DWG NO 8620185	REV Z
	Tolerance Unless Noted .2 +/- .050 .50 +/- .030 .000 +/- .010 FRACTION +/- 1/32 ANGLES +/- 1 DEGREE		Mat. Item No. Part Item No.	Project DXM LC	
			DO NOT SCALE	SIZE B	SHEET 4 OF 4