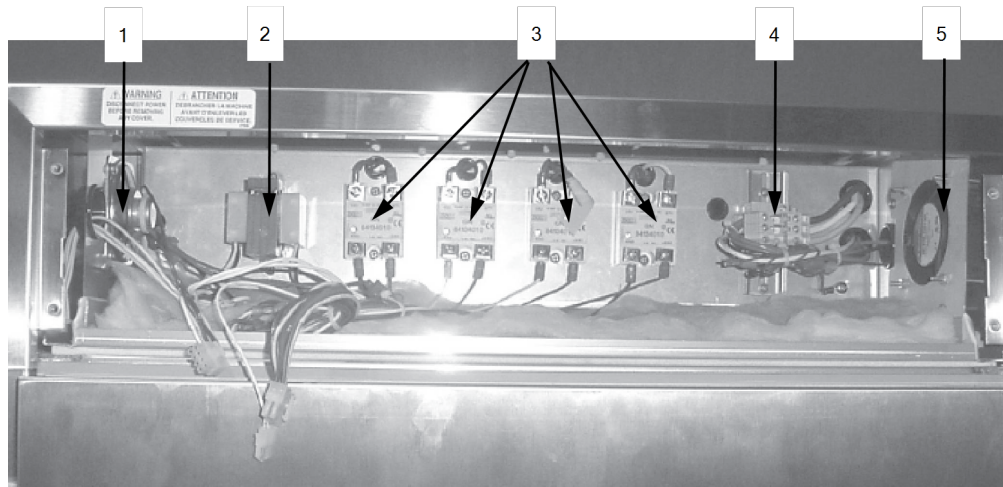




For the most up-to-date parts information, visit
<https://parts.hennypennyhelp.com>.

Behind Controls



Item No.	Part No.	Description	Qty. 990/996	Qty. 993/998	Stocking Level
1	63419	Speaker assembly	1	1	B
2	63460	Transformer assembly, 120 VAC Pri.-24 Sec.	-	1	A
2	63459	Transformer assembly, 208/240 VAC Pri.-24 Sec.	1	1	A
3	40645	Solid State Relay, 25A	4	4	A
4	93847	Terminal block assembly	1	1	
5	16684	Cooling fan assembly, 120 VAC	-	1	A
5	16688	Cooling fan assembly, 220 VAC	1	1	A
6*	66879	Resistor capacitor assembly	1	1	B
7*	ME90-009	Relay, 240 VAC, 30 A, CE	1	1	A
8*	180005	Surge protector, CE, After DC2101025	1	1	B



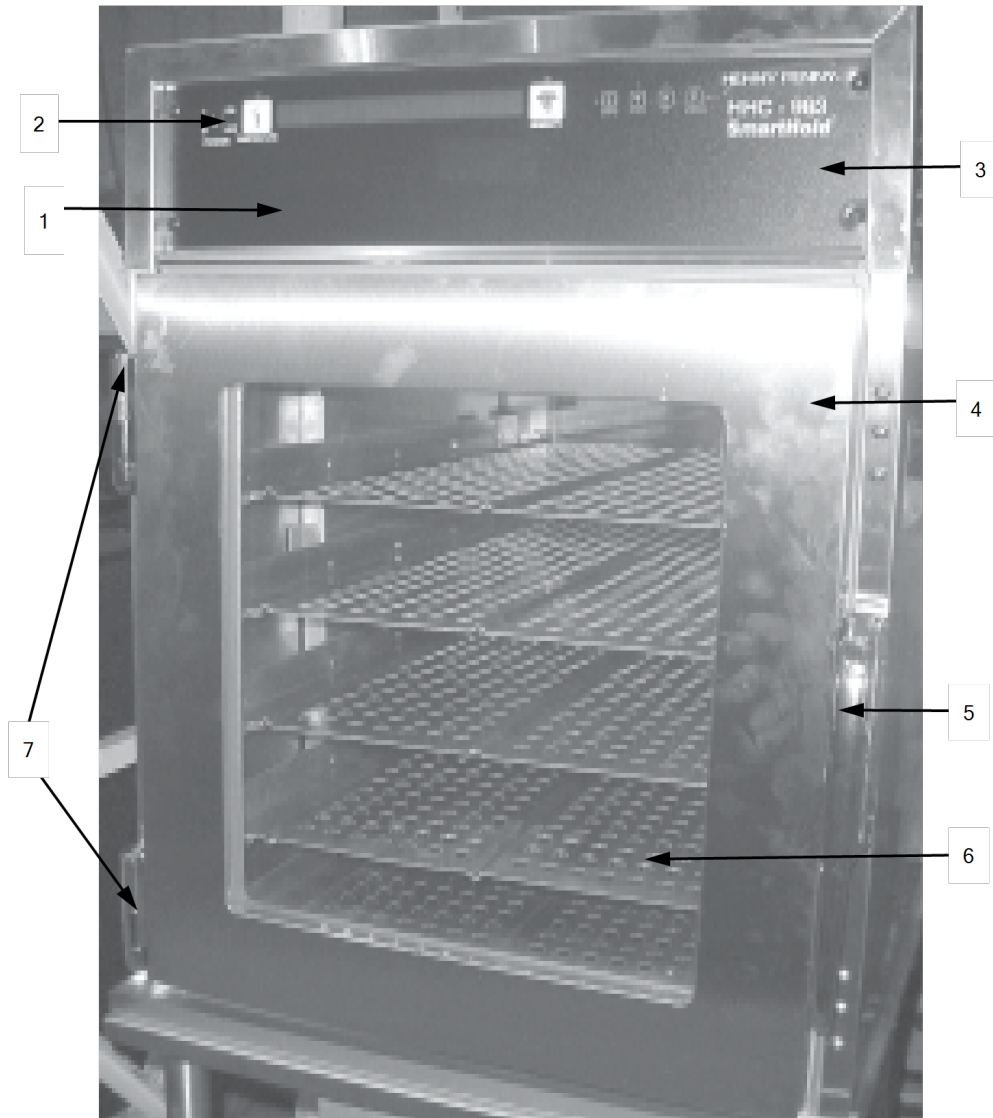
For the most up-to-date parts information, visit
<https://parts.hennypennyhelp.com>.

Item No.	Part No.	Description	Qty. 990/996	Qty. 993/998	Stocking Level
9*	79525	Lever nut, 3 conductor, CE, After DC2101025	A/R	A/R	
Recommended Parts: A = Truck Stock; B = Dist. Stock * = Not Shown					



For the most up-to-date parts information, visit <https://parts.hennypennyhelp.com>.

Control and Door Assembly



Item No.	Part No.	Description	Qty. 980	Qty. 983	Stocking Level
1	14863	Control board kit, 980	1	-	B



For the most up-to-date parts information, visit
<https://parts.hennypennyhelp.com>.

Item No.	Part No.	Description	Qty. 980	Qty. 983	Stocking Level
1	N/A	Control board kit, 983	-	1	B
1	14385	Control board kit, 980, Pizza Hut	1	-	B
2	63464	Power switch	1	1	A
3	65113	Decal, 980	1	-	
3	65114	Decal, 983	-	1	
4	32768	Glass door assembly, 980, right top	1 or 2	-	
4	32769	Glass door assembly, 980, right bottom	1 or 2	-	
4	32770	Glass door assembly, 980, left top	1 or 2	-	
4	32771	Glass door assembly, 980, left bottom	1 or 2	-	
4	32774	Glass door assembly, 983, right	-	1 or 2	
4	32775	Glass door assembly, 983, left	-	1 or 2	
4	70730	Door assembly, 980, Stainless steel	1 or 2	-	
4	70732	Door assembly, 983, Stainless steel	-	1 or 2	
5	14272	Door handle kit	2 or 4	2	
6	24844	Pizza trays, optional	10	5	
7	14271	Door hinge kit	4 or 8	4	



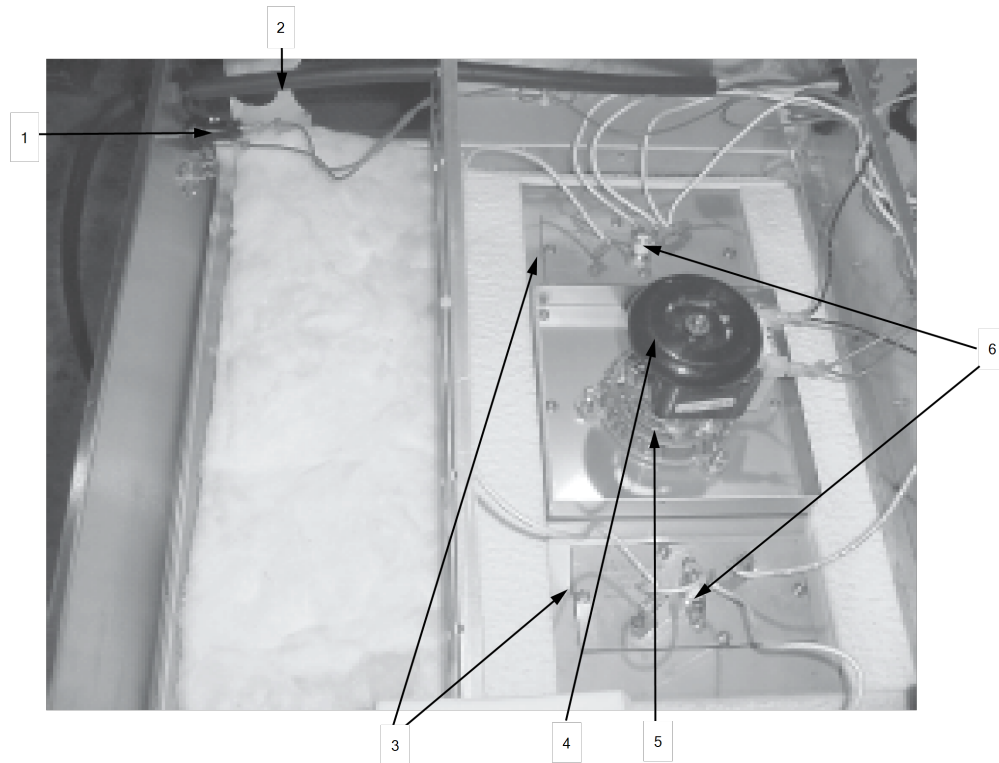
For the most up-to-date parts information, visit
<https://parts.hennypennyhelp.com>.

Item No.	Part No.	Description	Qty. 980	Qty. 983	Stocking Level
8*	27149	Door stops, right-right & left-left pass thru units	4	-	
Recommended Parts: A = Truck Stock; B = Dist. Stock * = Not Shown					



For the most up-to-date parts information, visit
<https://parts.hennypennyhelp.com>.

Heat Assembly



Item No.	Part No.	Description	Qty. 980	Qty. 983	Stocking Level
1	18364	Fuse holder assembly	2	1	B
1	EF02-007	Fuse, 15 Amp	2	1	A
1	EF02-006	Fuse holder	2	1	A
2	26906	Power cord assembly, 120 VAC, 20A	-	1	
2	27312	Power cord assembly, 250 VAC, 20A	1	-	



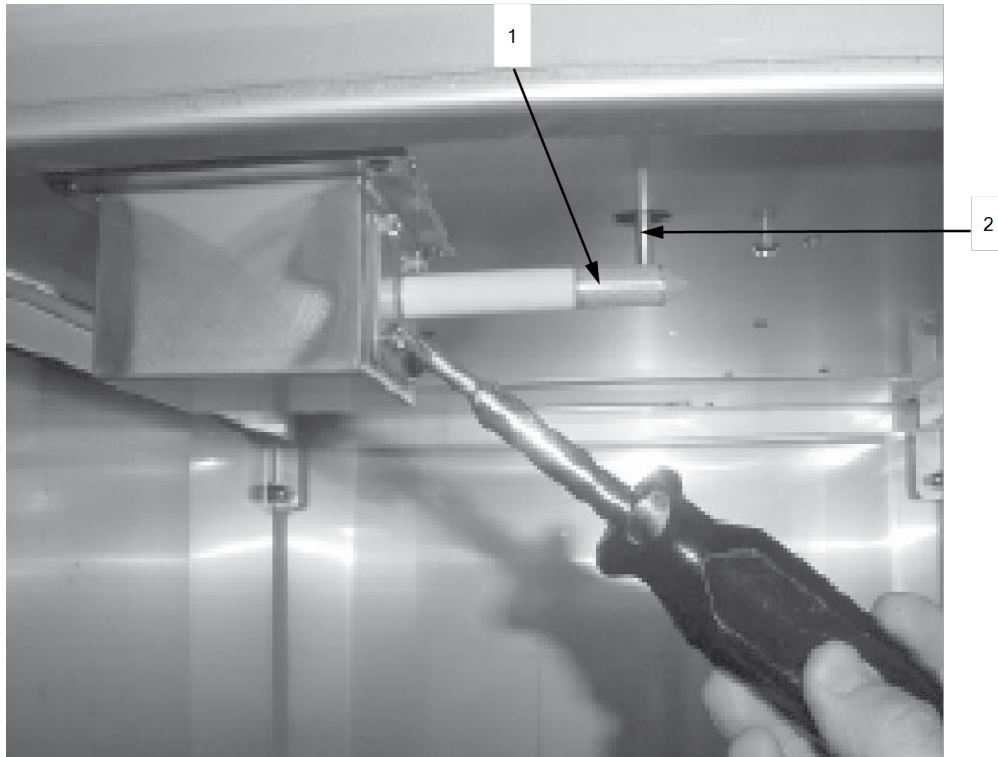
For the most up-to-date parts information, visit
<https://parts.hennypennyhelp.com>.

Item No.	Part No.	Description	Qty. 980	Qty. 983	Stocking Level
2	63870	Power cord assembly, 120 VAC, 30A	1	1	
2	63927	Power cord assembly, 120 VAC, 50A	1	-	
2	63930	Power cord assembly, 208/240 VAC, 20A	1	1	
3	64285	Air heater assembly, 1000W, 104 VAC (208 VAC units) (includes 63815 gasket)	2	-	A
3	64128	Air heater assembly, 120 VAC, 1000W, (includes 63815 gasket)	2	-	A
3	64126	Air heater assembly, 120 VAC, 600W, (includes 63815 gasket)	-	2	A
4	63363	Blower motor, 120 VAC	-	1	A
4	63362	Blower motor, 208 VAC	1	1	A
4	63361	Blower motor, 240 VAC	1	1	A
5	63360	Cabinet fan blade, 5-3/8 in	1	1	
6	63814	Motor mounting plate gasket	1	1	
7	18201	High limit sensor, 335 degree	2	2	A
8*	51068	EMC filter board assembly	1	1	A
Recommended Parts: A = Truck Stock; B = Dist. Stock * = Not Shown					



For the most up-to-date parts information, visit
<https://parts.hennypennyhelp.com>.

Humidity Assembly

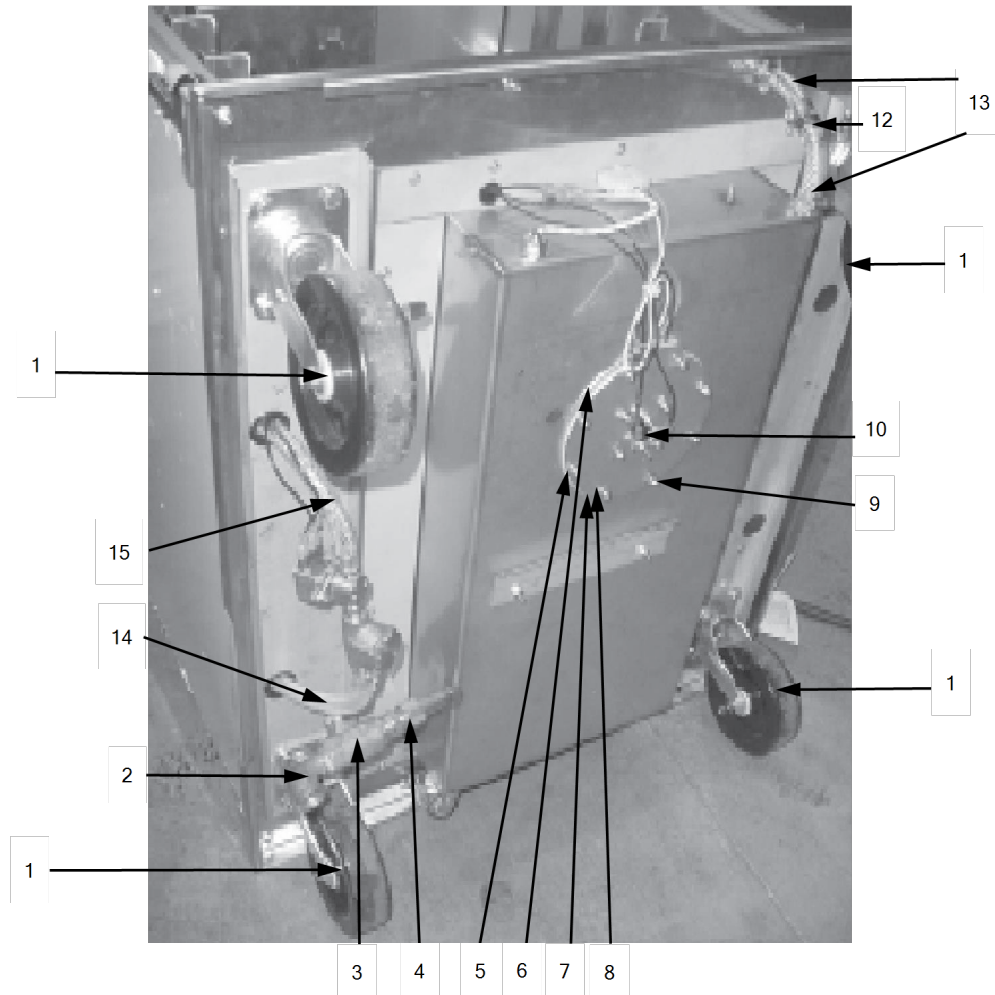


Item No.	Part No.	Description	Qty. 990/996	Qty. 993//998	Stocking Level
1	14390	Humidity sensor kit (before April 1, 2005)	1	1	C
1	140135	Humidity sensor kit (April 1, 2005 and after)	1	1	C
2	81673	Air temperature probe	1	1	A
3*	14391	Calibration board kit	1	1	A
Recommended Parts: A = Truck Stock; B = Dist. Stock * = Not Shown					



For the most up-to-date parts information, visit
<https://parts.hennypennyhelp.com>.

Water Assembly



Item No.	Part No.	Description	Qty. 980	Qty. 983	Stocking Level
*	140723	Water pan kit	1	1	
*	63810	- Water pan gasket	1	1	
1	27155	Caster	2	2	
2	FP01-127	Street elbow, 90 degree, 1/2 x 1/2	1	1	



For the most up-to-date parts information, visit
<https://parts.hennypennyhelp.com>.

Item No.	Part No.	Description	Qty. 980	Qty. 983	Stocking Level
2	FP01-167	Street elbow, 90 degree, 1/2 x 3/3 BR, countertop models	-	1	
3	63389	Drain valve with handle	1	1	
3	39169	Drain handle, 983's with casters	-	1	
4	FP01-131	Male connector tube, 5/8	1	1	
4	FP01-159	Male connector tube, 5/8 x 3/8, countertop models	-	1	
5	140170	Water pan heater kit, 120 VAC	-	1	A
5	140171	Water pan heater kit, 208 VAC	1	1	A
5	140172	Water pan heater kit, 240 VAC	1	1	A
6	71130	Water heater spacer	1	1	
7	68130	Water heater insulator	1	1	
8	67524	Water heater backing plate	1	1	
9	NS02-007	Hex keps nut, #8-32, coated	12	12	
10	63831	Water pan high limit	1	1	A
10	64297	Water pan high limit, CE, manual reset	1	1	A
11	27154	Locking caster -	2	2	
12	64154	Check valve	1	1	
13	63463	Water pan hose	2	2	
14	26968-001	Water hose, 13 in	1	1	



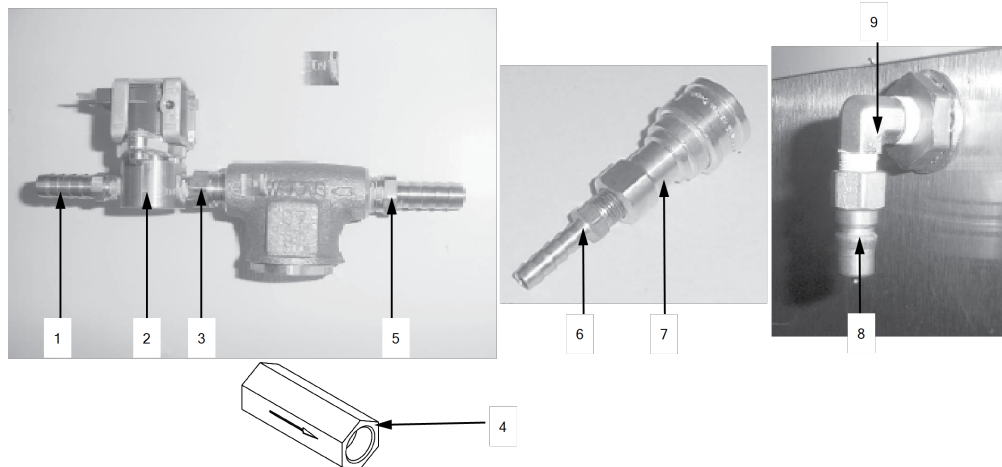
For the most up-to-date parts information, visit
<https://parts.hennypennyhelp.com>.

Item No.	Part No.	Description	Qty. 980	Qty. 983	Stocking Level
14	67186	Water inlet tube, copper, WRAS	1	1	
15	26968-003	Water hose, 980, 69 in	1	-	
15	67229	Water supply tube, 980, copper, UK & Ireland	1	-	
16*	140702	Water pan heater cover kit, use for both non-CE and CE applications	1	1	
17*	FP01-013	Bulkhead adaptor	1	1	
18*	FP01-153	Elbow-3/8 hose barb-1/4 NPT	1	1	
19*	MS01-297	Hose clamp-SS .562-1.062	2	2	
Recommended Parts: A = Truck Stock; B = Dist. Stock * = Not Shown					



For the most up-to-date parts information, visit
<https://parts.hennypennyhelp.com>.

Auto-Water Fill Assembly



Item No.	Part No.	Description	Qty. 980	Qty. 983	Stocking Level
1	FP01-152	Hose barb fitting, 3/8 in, 1/8 National Pipe Tapered	1	1	
2	14965	Water valve kit, 120 VAC	-	1	A
2	14966	Water valve kit, 240 VAC, Non-CE, CE	1	1	A
2	14967	Water valve kit, 208 VAC	1	1	A
2	32646	Water valve kit, 220/240 VAC, UK, WRAS	1	1	A
3	FP01-012	Reducing nipple, 1/4 to 1/8 Z	1	1	
4	83514	Water strainer	1	1	B
5	FP01-053	Tube fitting, 3/8 in, 1/4 National Pipe Tapered	1	1	



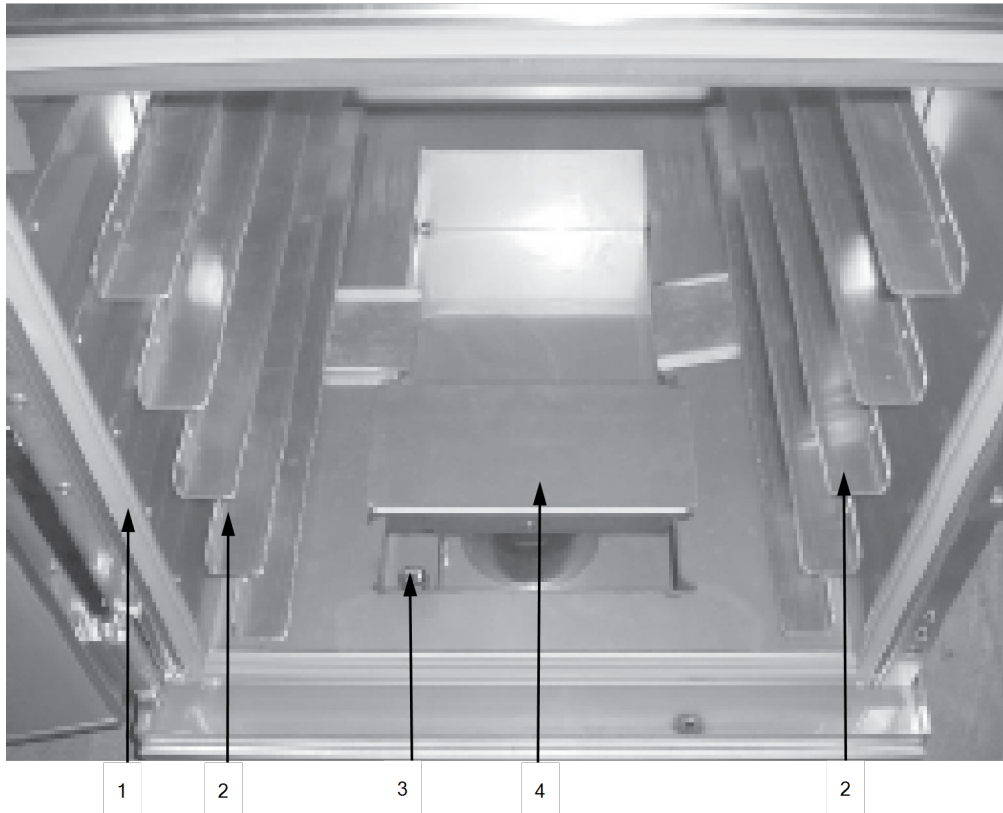
For the most up-to-date parts information, visit
<https://parts.hennypennyhelp.com>.

Item No.	Part No.	Description	Qty. 980	Qty. 983	Stocking Level
6	FP01-156	Hose barb fitting, 1/4 in, 1/8 National Pipe Tapered	1	1	
7	FP01-154	Quick connect socket, 1/8 in	1	1	
8	FP01-155	Quick connect plug, 1/8 in	1	1	
Recommended Parts: A = Truck Stock; B = Dist. Stock * = Not Shown					



For the most up-to-date parts information, visit
<https://parts.hennypennyhelp.com>.

Inside Cabinet



Item No.	Part No.	Description	Qty. 980	Qty. 983	Stocking Level
1	25643	Door gasket, 980	2 or 4	-	B
1	25793	Door gasket, 983	-	2	B
2	27384	Air duct assembly, 980, upper, use w/pizza trays	2	-	
2	27894	Air duct assembly, 980, 23 in, upper, 5.0	2	-	



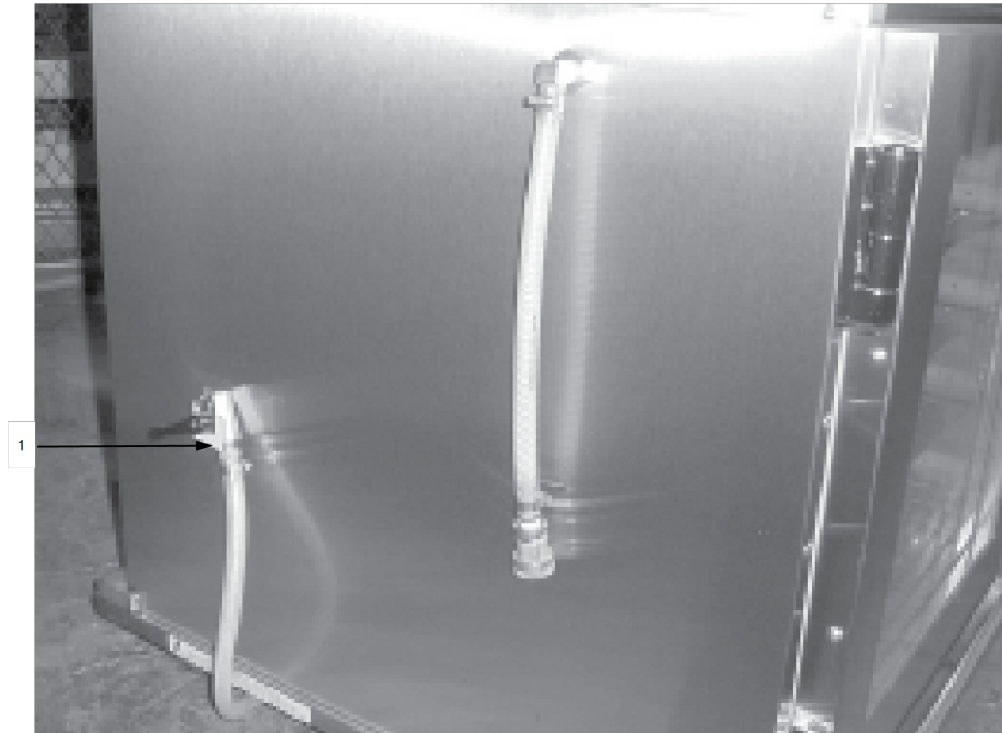
For the most up-to-date parts information, visit
<https://parts.hennypennyhelp.com>.

Item No.	Part No.	Description	Qty. 980	Qty. 983	Stocking Level
2	32511	Air duct assembly, 980, lower, use w/pizza trays	2	-	
2	68016	Air duct assembly, 980, lower, 5.0, auto-water fill	2	-	
2	68562	Air duct assembly, 980, lower, 5.0, manual-water fill	2	-	
3	140245	Float switch assembly	1	1	A
4	63525	Water pan cover & concentration ring assembly	1	1	
4	SC01-076	Screw, #8-32 x 1/4, Crosstip screwdriver required, THD, Stainless steel	8	8	
4	ME50-048	Standoff, .25 diameter x .63 length #8-32, Stainless steel	4	4	
Recommended Parts: A = Truck Stock; B = Dist. Stock * = Not Shown					



For the most up-to-date parts information, visit
<https://parts.hennypennyhelp.com>.

HHC 983 Drain Valve Assembly



Item No.	Part No.	Description	Qty. 980	Qty. 983
1	26968-001	Water hose, 13 in	-	1
Recommended Parts: A = Truck Stock; B = Dist. Stock * = Not Shown				